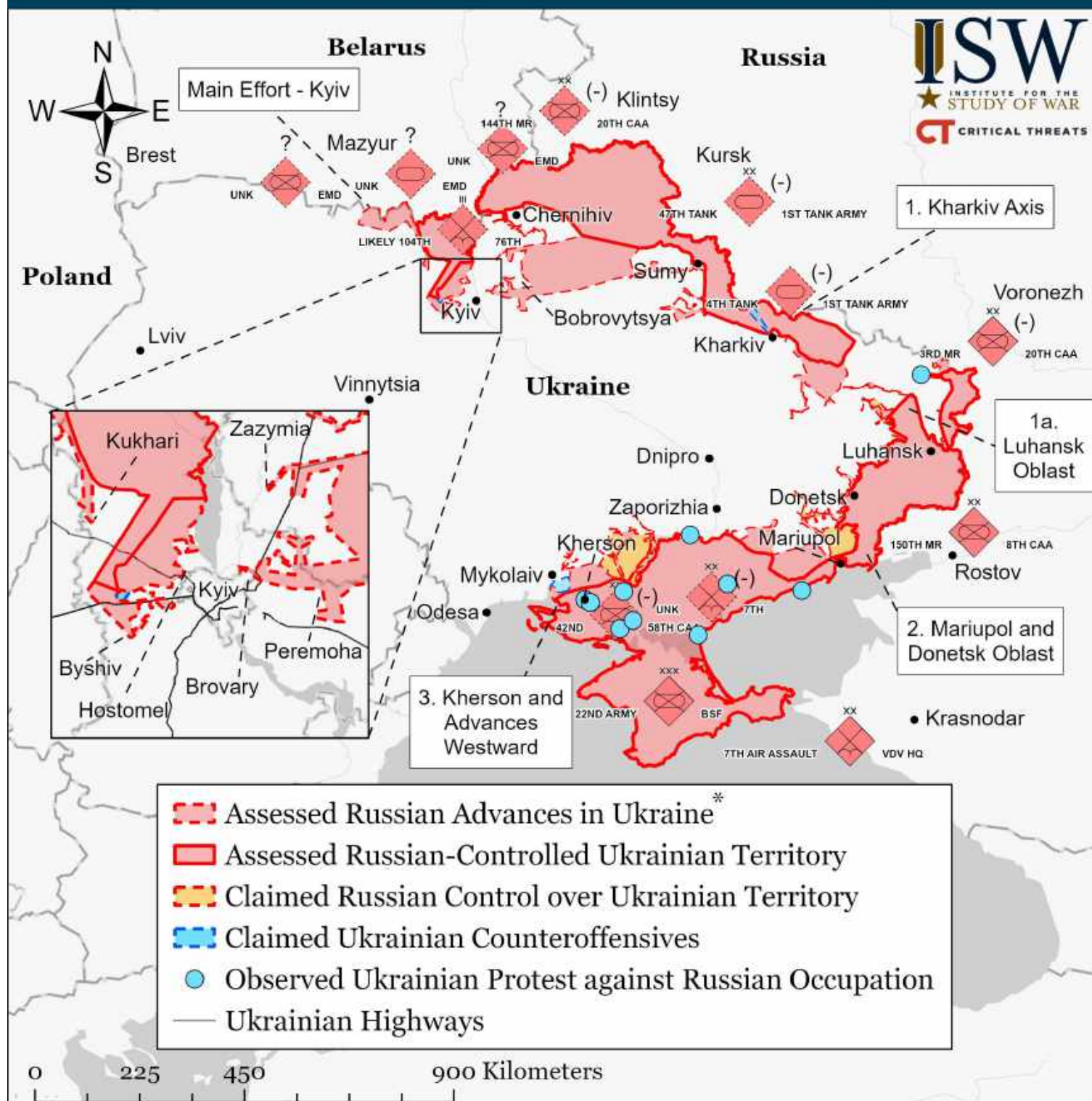


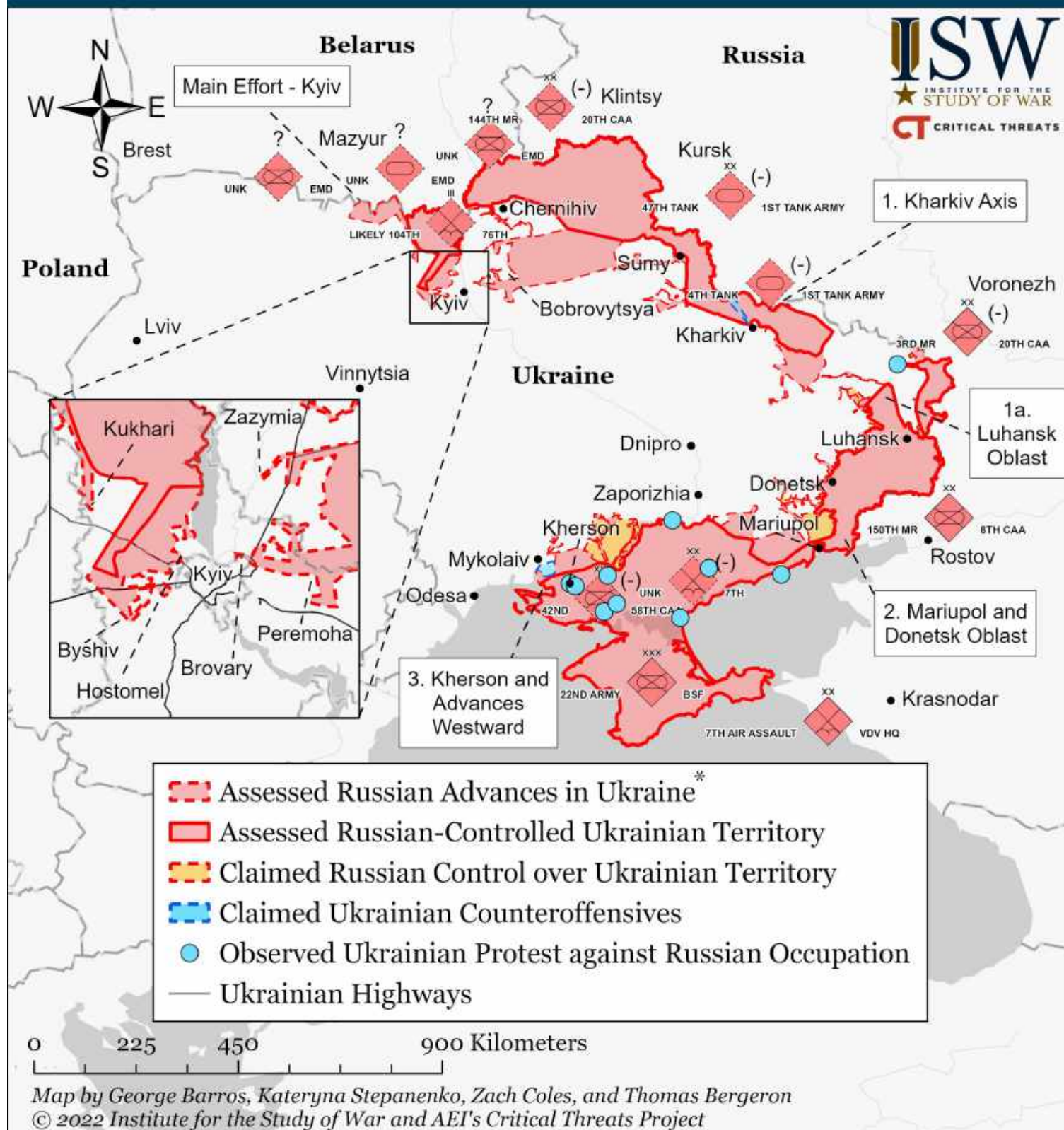
Assessed Control of Terrain in Ukraine and Main Russian Maneuver Axes as of March 22, 2022, 3:00 PM ET



Map by George Barros, Kateryna Stepanenko, Peter Mills, and Thomas Bergeron
© 2022 Institute for the Study of War and AEI's Critical Threats Project

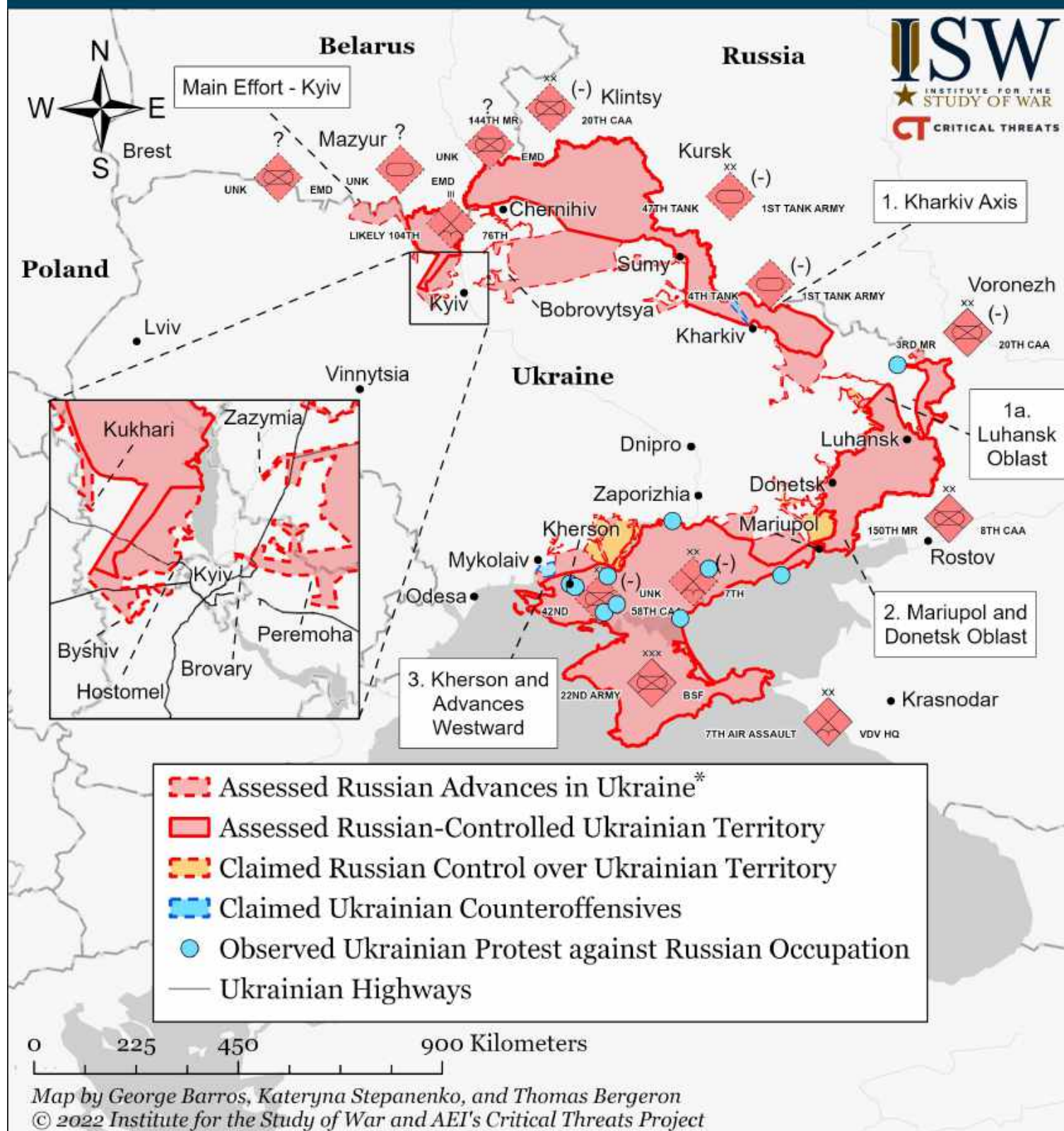
* Assessed Russian advances are areas where ISW assesses Russian forces have operated in or launched attacks against but do not control.

Assessed Control of Terrain in Ukraine and Main Russian Maneuver Axes as of March 21, 2022, 3:00 PM ET



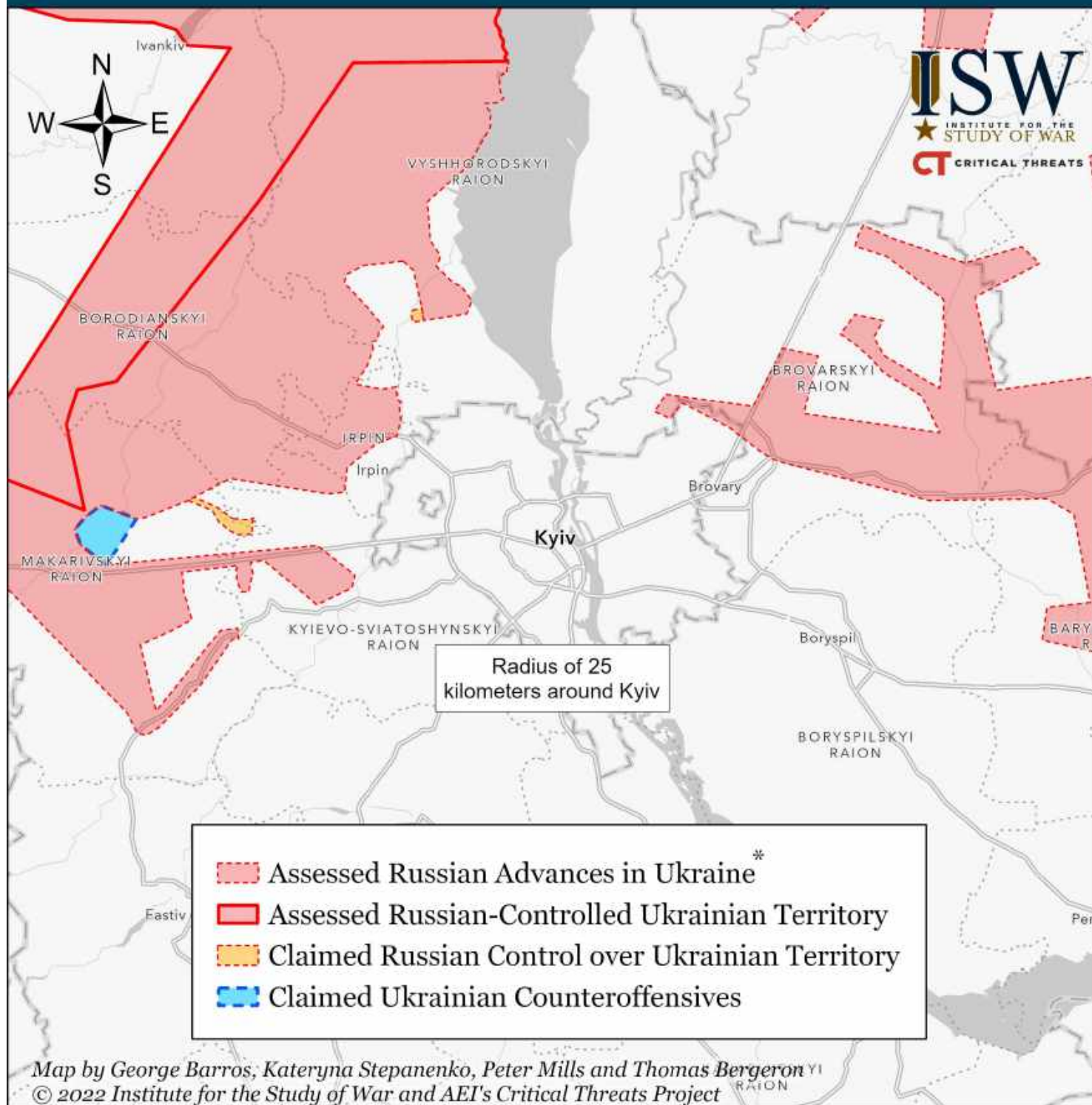
* Assessed Russian advances are areas where ISW assesses Russian forces have operated in or launched attacks against but do not control.

Assessed Control of Terrain in Ukraine and Main Russian Maneuver Axes as of March 20, 2022, 3:00 PM ET



* Assessed Russian advances are areas where ISW assesses Russian forces have operated in or launched attacks against but do not control.

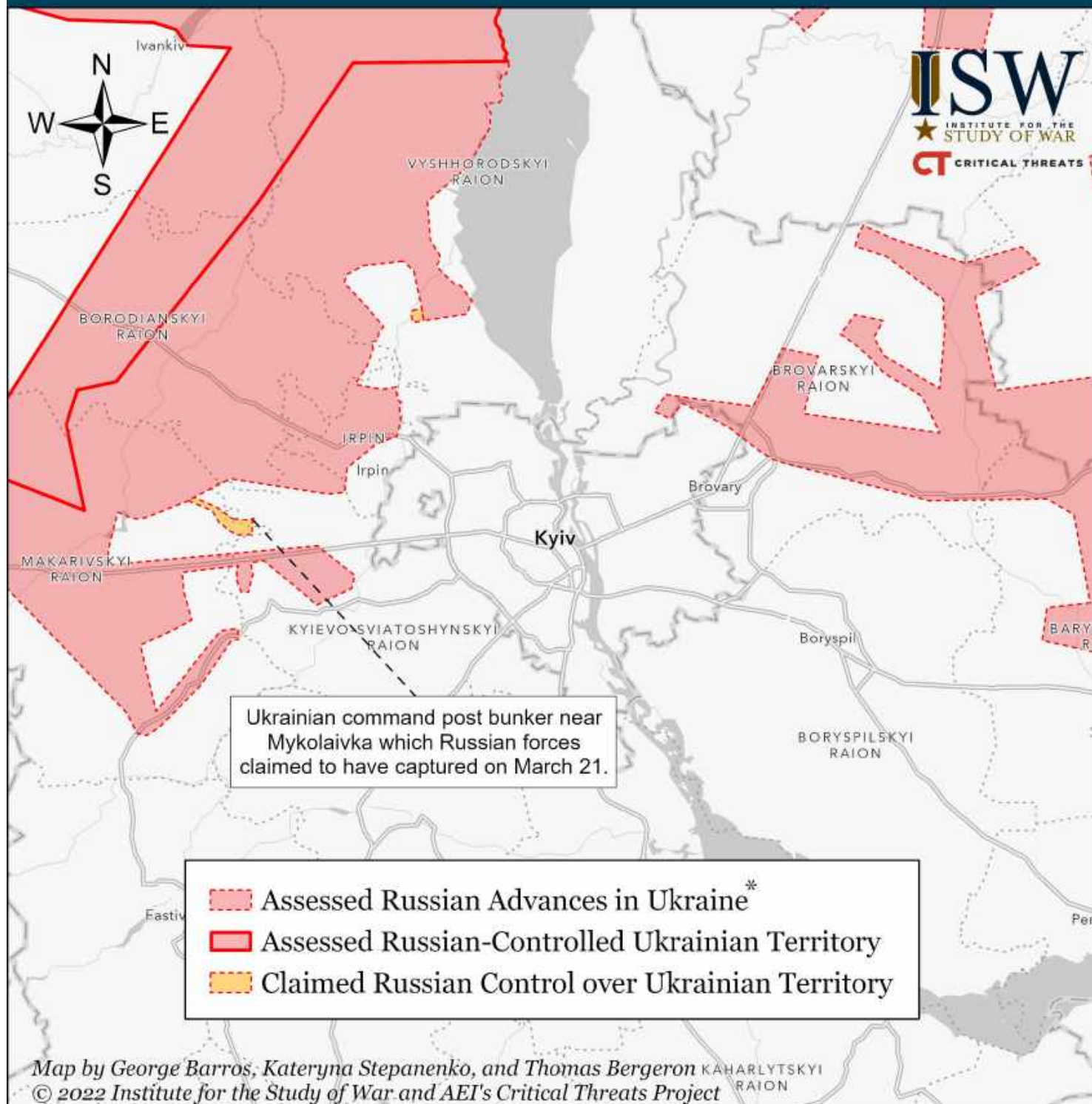
Assessed Control of Terrain Around Kyiv as of March 22, 2022, 3:00 PM ET



Russian efforts to encircle or seize Kyiv remain stalemated as of March 22. Ukrainian defenses and counterattacks have badly disrupted the Russian advances on the east bank of the Dnipro. The Russians will not likely be able to restart major attacks on that axis for some time. The Russians have brought up reinforcements and supplies on the west bank, where they are establishing defensible lines. They have frittered away some of the renewed combat power in small-scale attacks that Ukrainian forces have beaten back. Ukrainian forces conducted a counteroffensive on Makariv on March 21. The Russians are concentrating artillery and rocket-launchers to increase their bombardment of the city, possibly as an alternative to renewed major offensive operations.

* Assessed Russian advances are areas where ISW assesses Russian forces have operated in or launched attacks against but do not control.

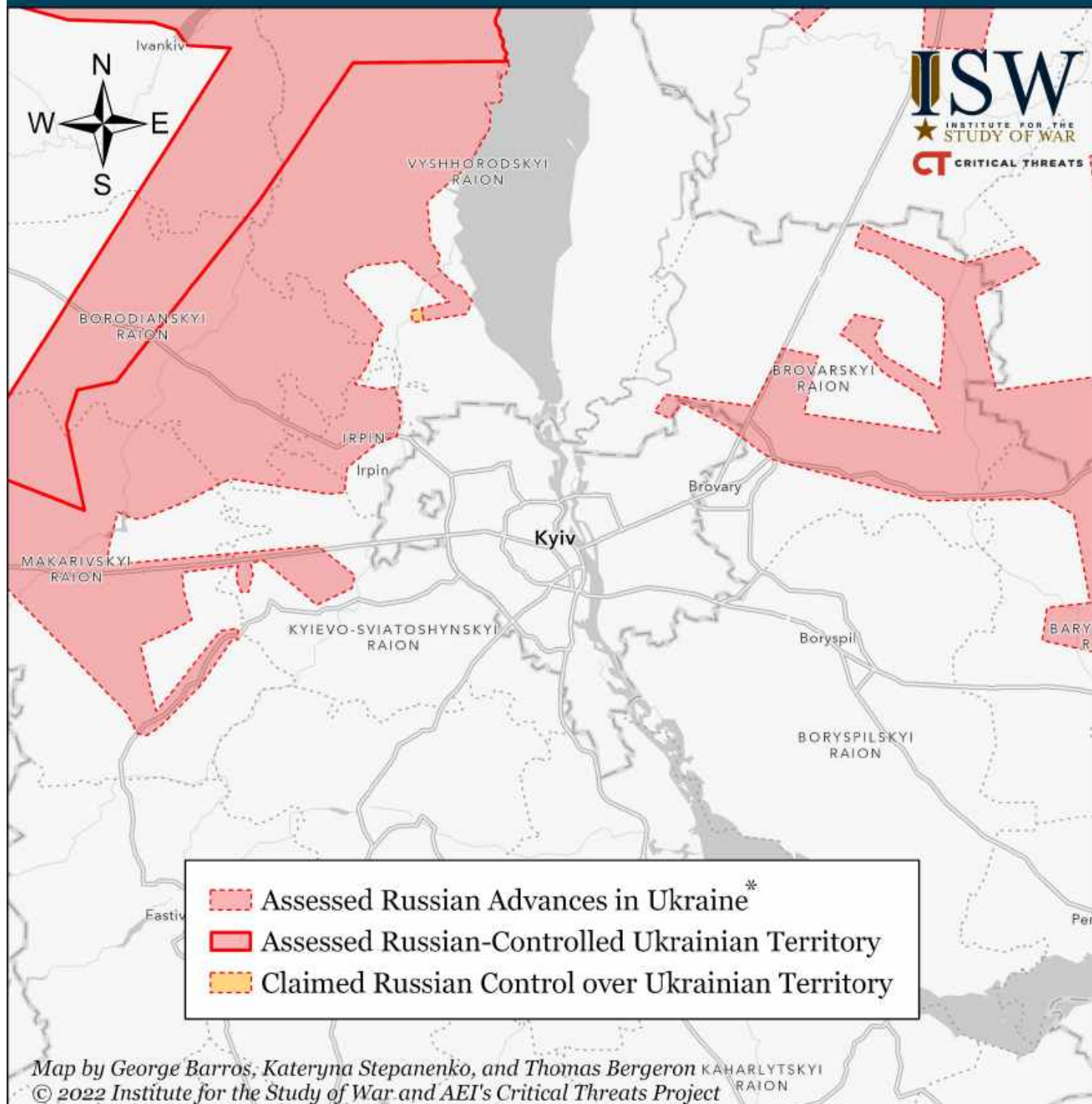
Assessed Control of Terrain Around Kyiv as of March 21, 2022, 3:00 PM ET



Russian efforts to encircle or seize Kyiv remain stalemated as of March 21. Ukrainian defenses and counter-attacks have badly disrupted the Russian advances on the east bank of the Dniro. The Russians will not likely be able to restart major attacks on that axis for some time. The Russians have brought up reinforcements and supplies on the west bank, where they are establishing defensible lines. The Russian Ministry of Defense claimed it captured the Ukrainian command post bunker in Mykolaivka, approximately 35 kilometers from Kyiv City, on March 21. ISW cannot verify this claim at this time. The Russians are concentrating artillery and rocket-launchers to increase their bombardment of the city, possibly as an alternative to renewed major offensive operations.

* Assessed Russian advances are areas where ISW assesses Russian forces have operated in or launched attacks against but do not control.

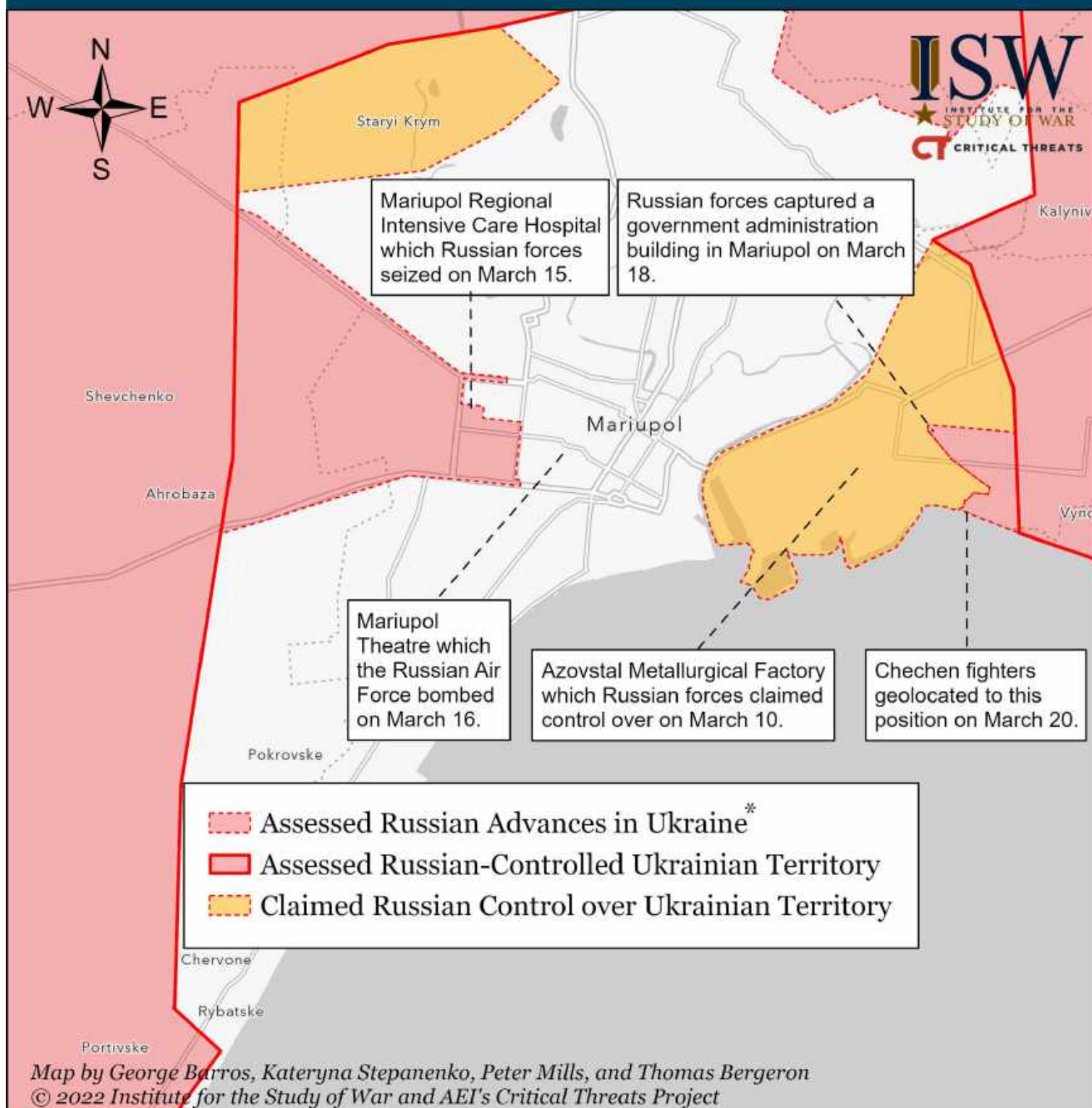
Assessed Control of Terrain Around Kyiv as of March 20, 2022, 3:00 PM ET



Russian efforts to encircle or seize Kyiv remain stalemated as of March 20. Ukrainian defenses and counter-attacks have badly disrupted the Russian advances on the east bank of the Dnipro. The Russians will not likely be able to restart major attacks on that axis for some time. The Russians have brought up reinforcements and supplies on the west bank, where they are establishing defensible lines. They have frittered away some of the renewed combat power in small-scale attacks that Ukrainian forces have beaten back. The Russians are concentrating artillery and rocket-launchers to increase their bombardment of the city, possibly as an alternative to renewed major offensive operations.

* Assessed Russian advances are areas where ISW assesses Russian forces have operated in or launched attacks against but do not control.

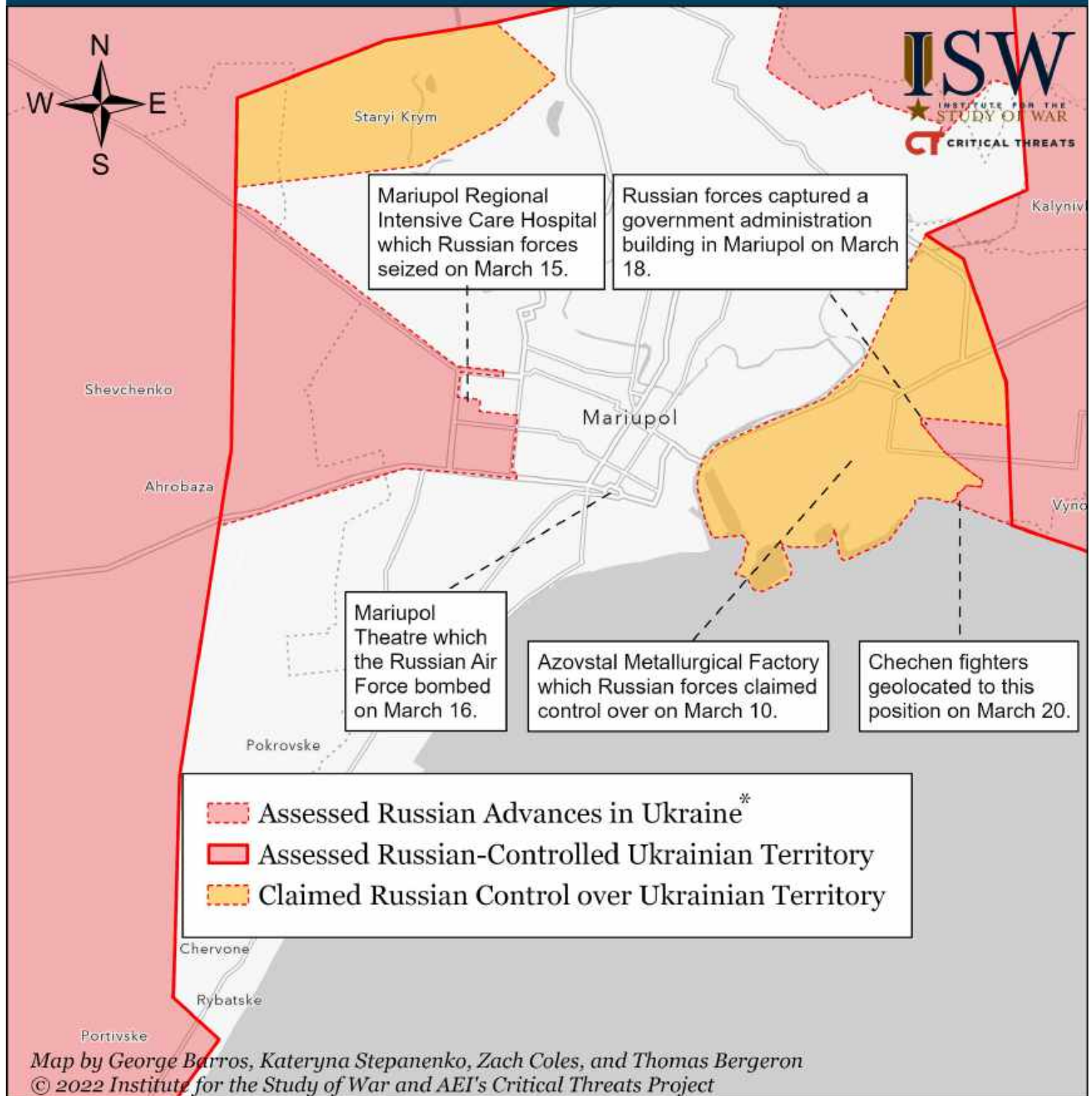
Assessed Control of Terrain Around Mariupol as of March 22, 2022, 3:00 ET



Russian forces continue their grinding advance into Mariupol, which they have encircled and are bombarding. Fighting is proceeding block-by-block and slowly. Much of the heart of the city remains free of Russian control as of March 22. The Ukrainian defenders may hold out for some time and make the Russians pay a high price for taking the city as long as their supplies of food, water, and ammunition hold out.

* Assessed Russian advances are areas where ISW assesses Russian forces have operated in or launched attacks against but do not control.

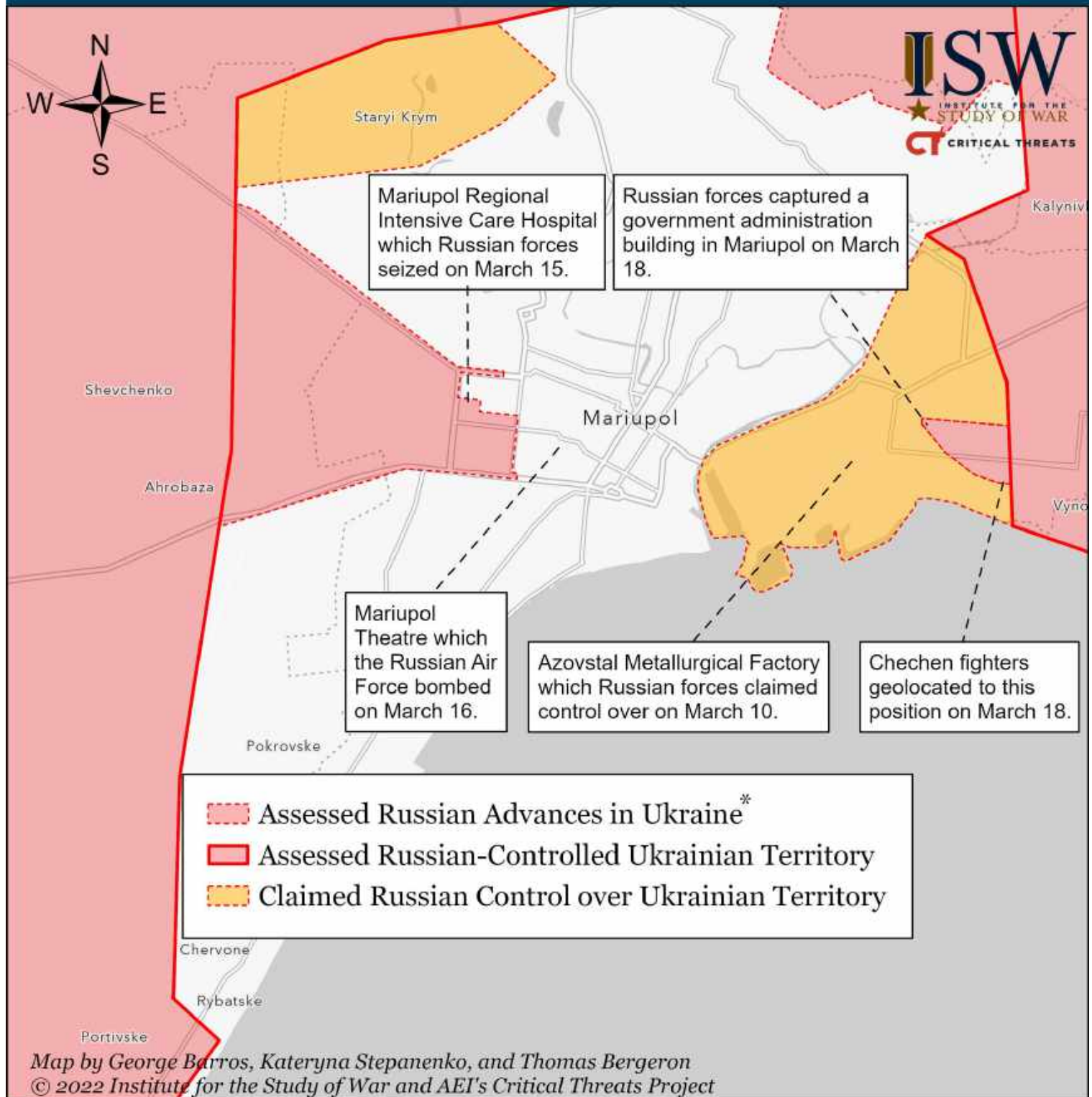
Assessed Control of Terrain Around Mariupol as of March 21, 2022, 3:00 ET



Russian forces continue their grinding advance into Mariupol, which they have encircled and are bombarding. Fighting is proceeding block-by-block and slowly. Much of the heart of the city remains free of Russian control as of March 21. The Ukrainian defenders may hold out for some time and make the Russians pay a high price for taking the city as long as their supplies of food, water, and ammunition hold out.

* Assessed Russian advances are areas where ISW assesses Russian forces have operated in or launched attacks against but do not control.

Assessed Control of Terrain Around Mariupol as of March 20, 2022, 3:00 ET



Russian forces continue their grinding advance into Mariupol, which they have encircled and are bombarding. Fighting is proceeding block-by-block and slowly. Much of the heart of the city remains free of Russian control as of March 20. The Ukrainian defenders may hold out for some time and make the Russians pay a high price for taking the city as long as their supplies of food, water, and ammunition hold out.

* Assessed Russian advances are areas where ISW assesses Russian forces have operated in or launched attacks against but do not control.