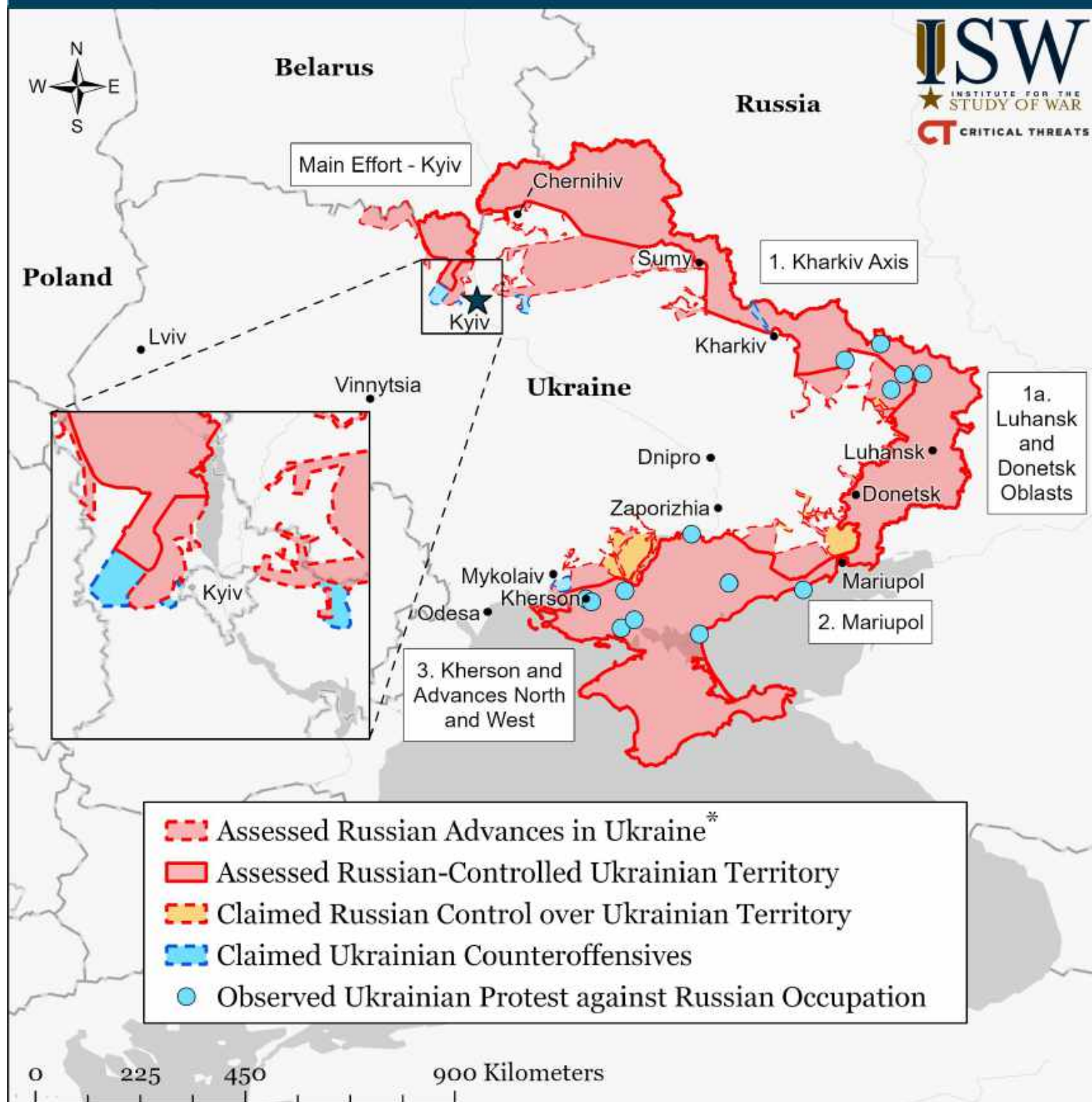


# Assessed Control of Terrain in Ukraine and Main Russian Maneuver Axes as of March 25, 2022, 3:00 PM ET

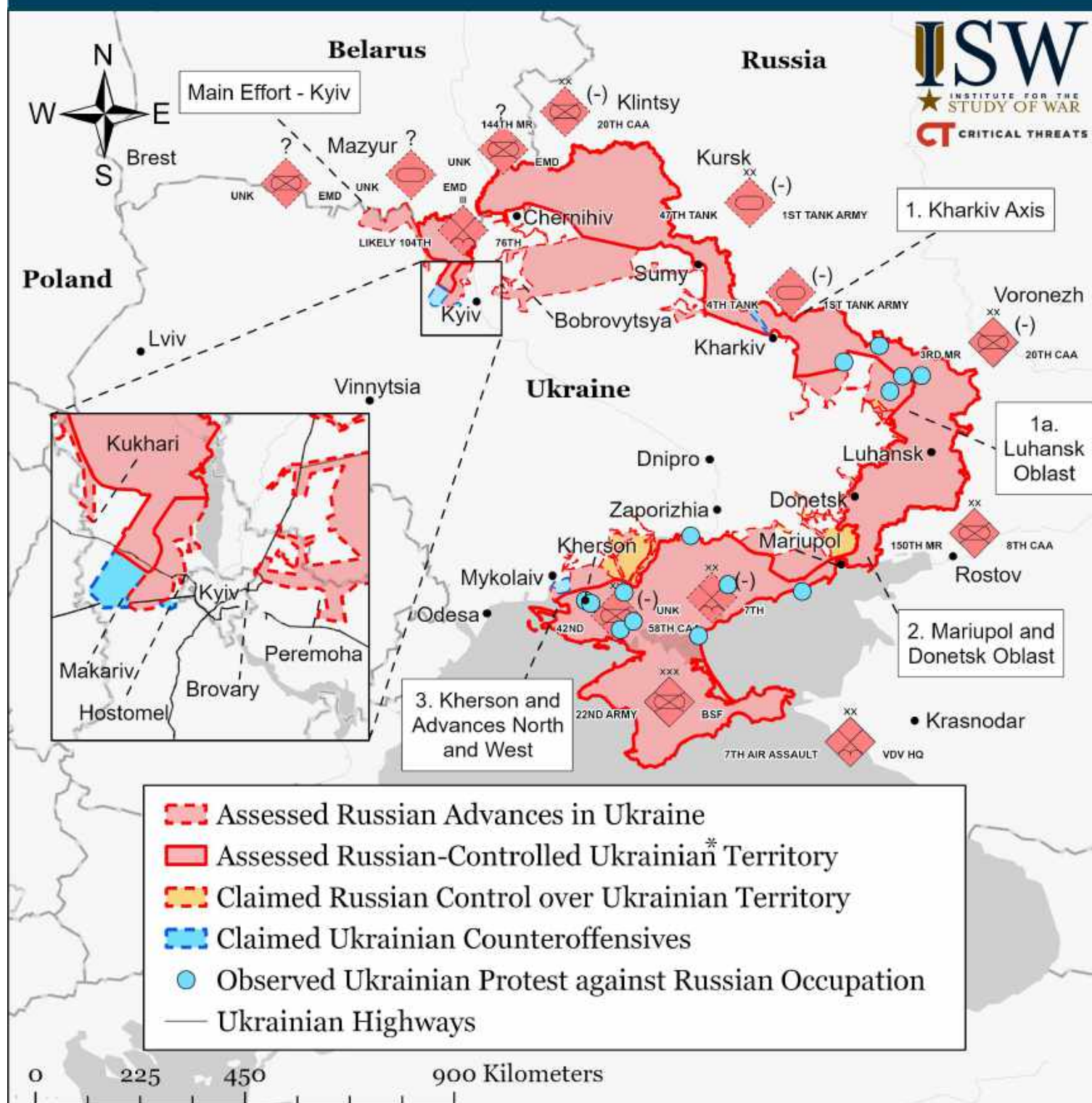


Map by George Barros, Kateryna Stepanenko, Peter Mills, and Thomas Bergeron  
© 2022 Institute for the Study of War and AEI's Critical Threats Project

\* Assessed Russian advances are areas where ISW assesses Russian forces have operated in or launched attacks against but do not control.



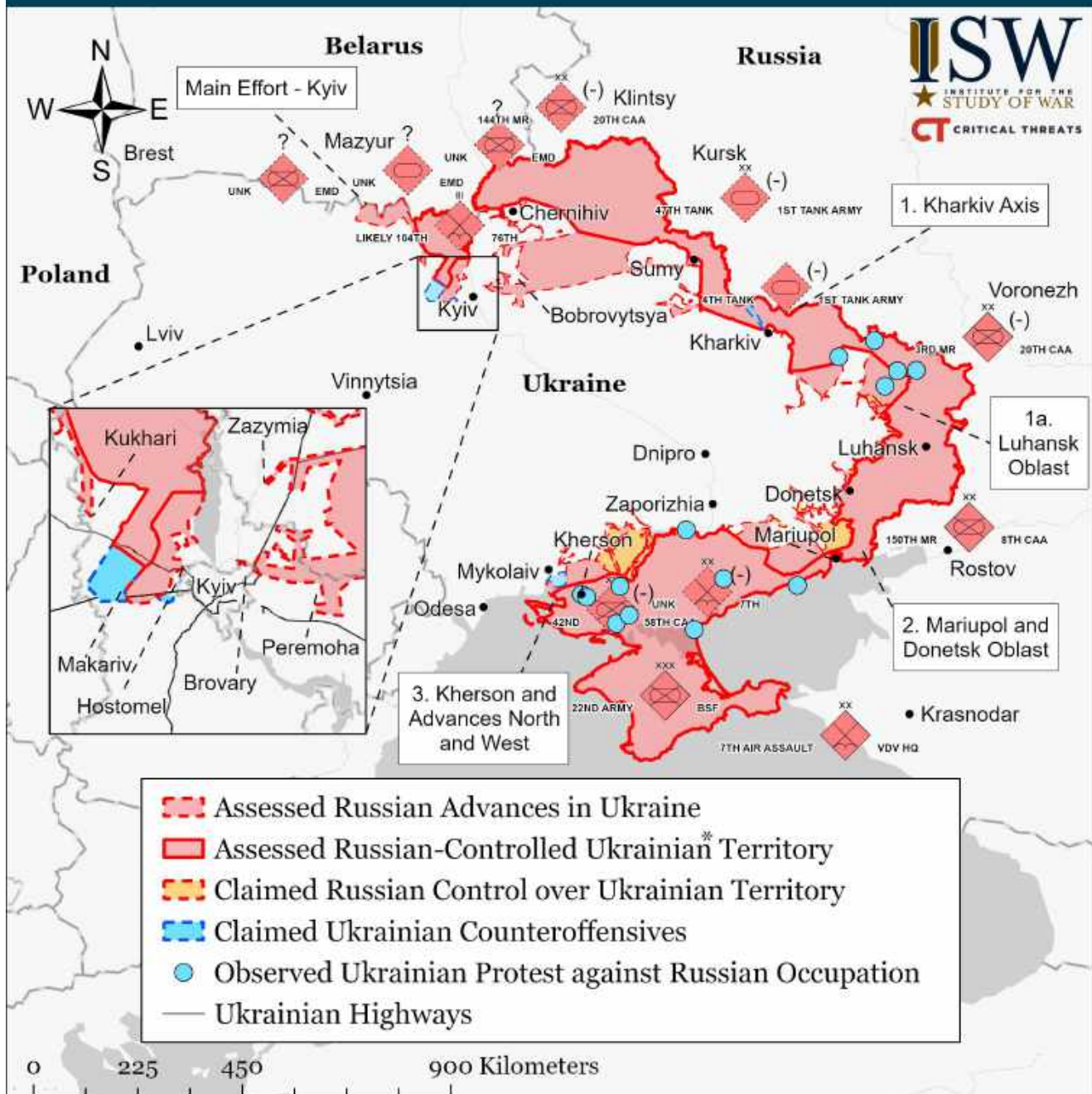
# Assessed Control of Terrain in Ukraine and Main Russian Maneuver Axes as of March 24, 2022, 3:00 PM ET



\* Assessed Russian advances are areas where ISW assesses Russian forces have operated in or launched attacks against but do not control.



# Assessed Control of Terrain in Ukraine and Main Russian Maneuver Axes as of March 23, 2022, 3:00 PM ET



Map by George Barros, Kateryna Stepanenko, and Thomas Bergeron  
© 2022 Institute for the Study of War and AEI's Critical Threats Project

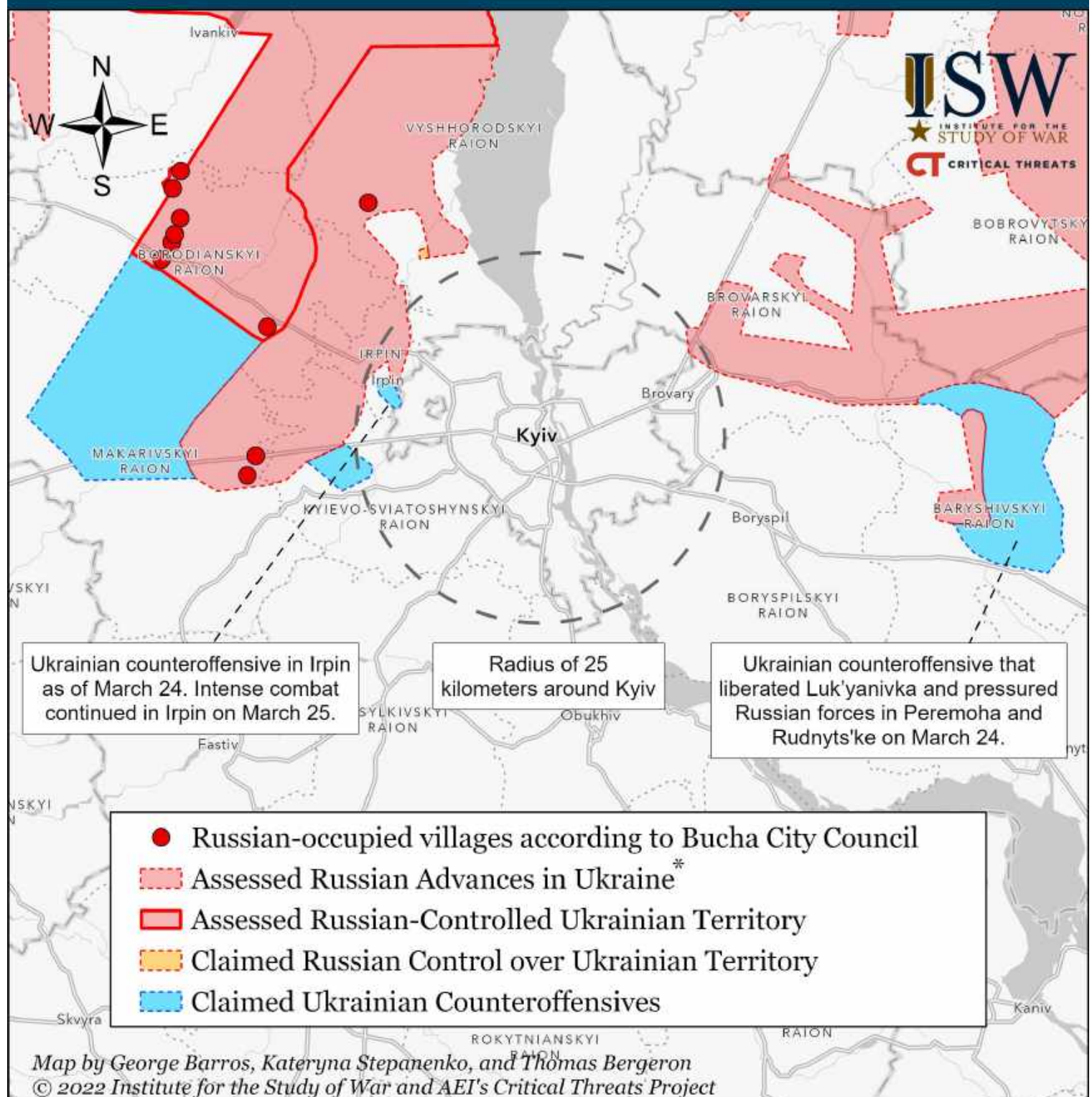
\* Assessed Russian advances are areas where ISW assesses Russian forces have operated in or launched attacks against but do not control.

Note: We have updated our map to show expanded Russian areas of controlled terrain and advances around Luhansk based on observing new data. The expanded areas of assessed Russian control in our map of March 23 do not indicate that the Russians have made further gains, only that we have received sufficiently detailed and reliable reporting of previous gains to adjust our map.

We have updated our map considerably since yesterday to show our current assessment of the probable front line west of Kyiv. Some of the Ukrainian gains shown likely occurred on March 21, but we have only just acquired sufficient evidence and clarity on the Ukrainian operations to reflect them accurately in the map of March 23.



# Assessed Control of Terrain Around Kyiv as of March 25, 2022, 3:00 PM ET

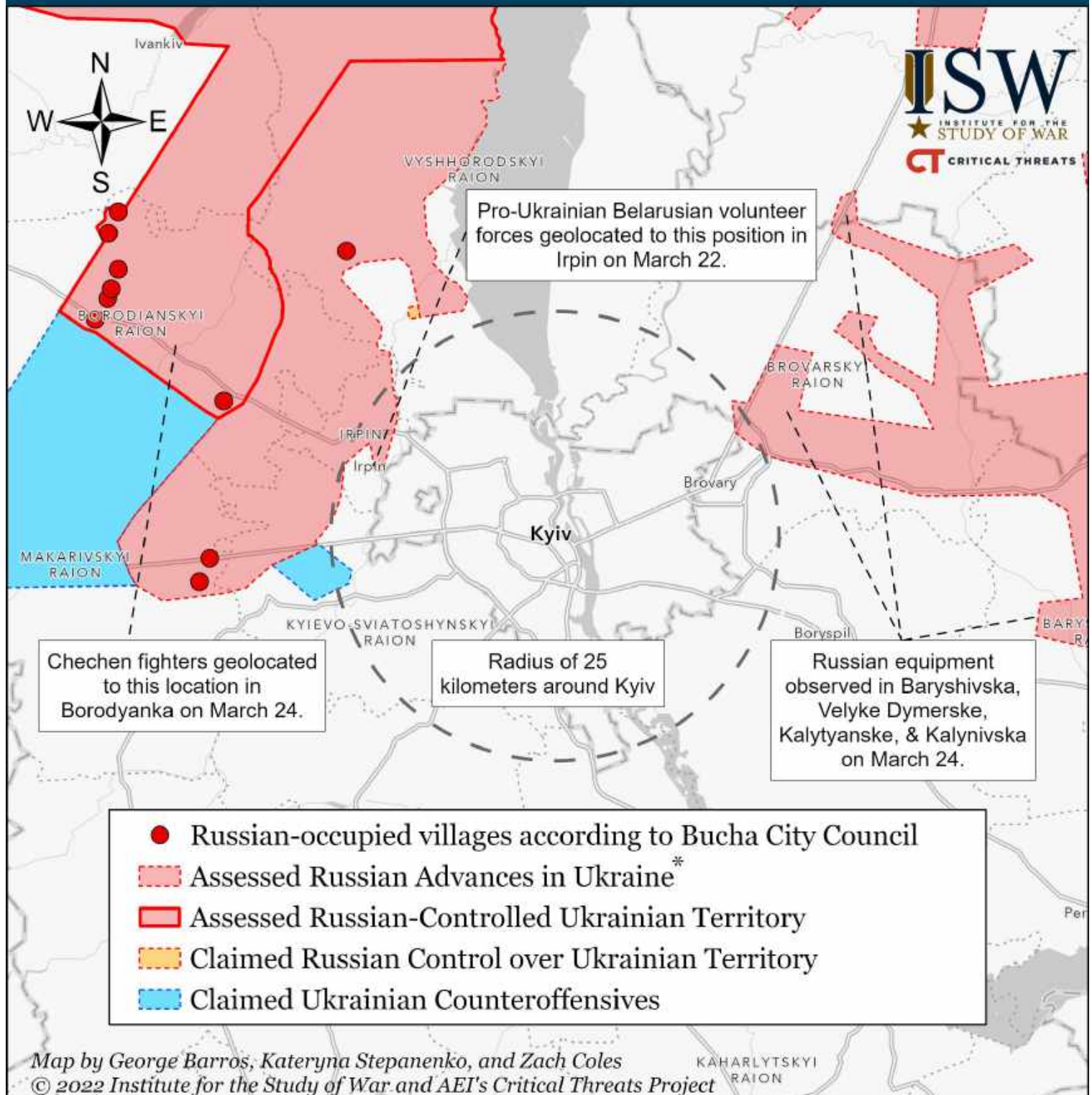


We increased Ukrainian counteroffensives in Irpin and Luk'yanivka based off new geolocation data observed since yesterday. These changes occurred before March 25, but we have only just acquired sufficient evidence and clarity on Russian and Ukrainian operations to reflect them accurately in the map of March 25.

\* Assessed Russian advances are areas where ISW assesses Russian forces have operated in or launched attacks against but do not control.



# Assessed Control of Terrain Around Kyiv as of March 24, 2022, 3:00 PM ET

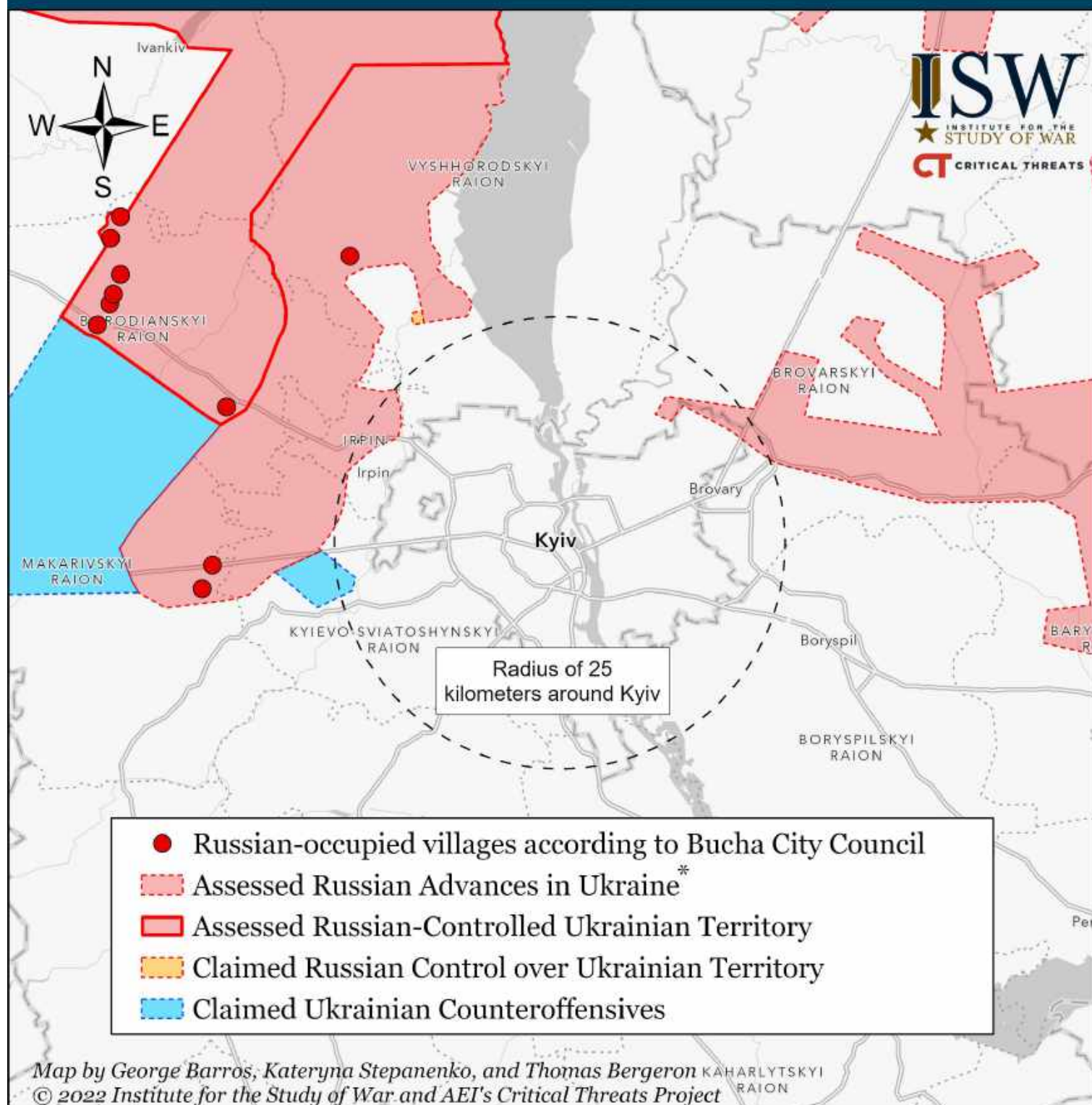


We slightly increases assessed Russian advances in Irpin based off new geolocation data observed since yesterday. These changes likely occurred before March 22, but we have only just acquired sufficient evidence and clarity on Russian and Ukrainian operations to reflect them accurately in the map of March 24.

\* Assessed Russian advances are areas where ISW assesses Russian forces have operated in or launched attacks against but do not control.



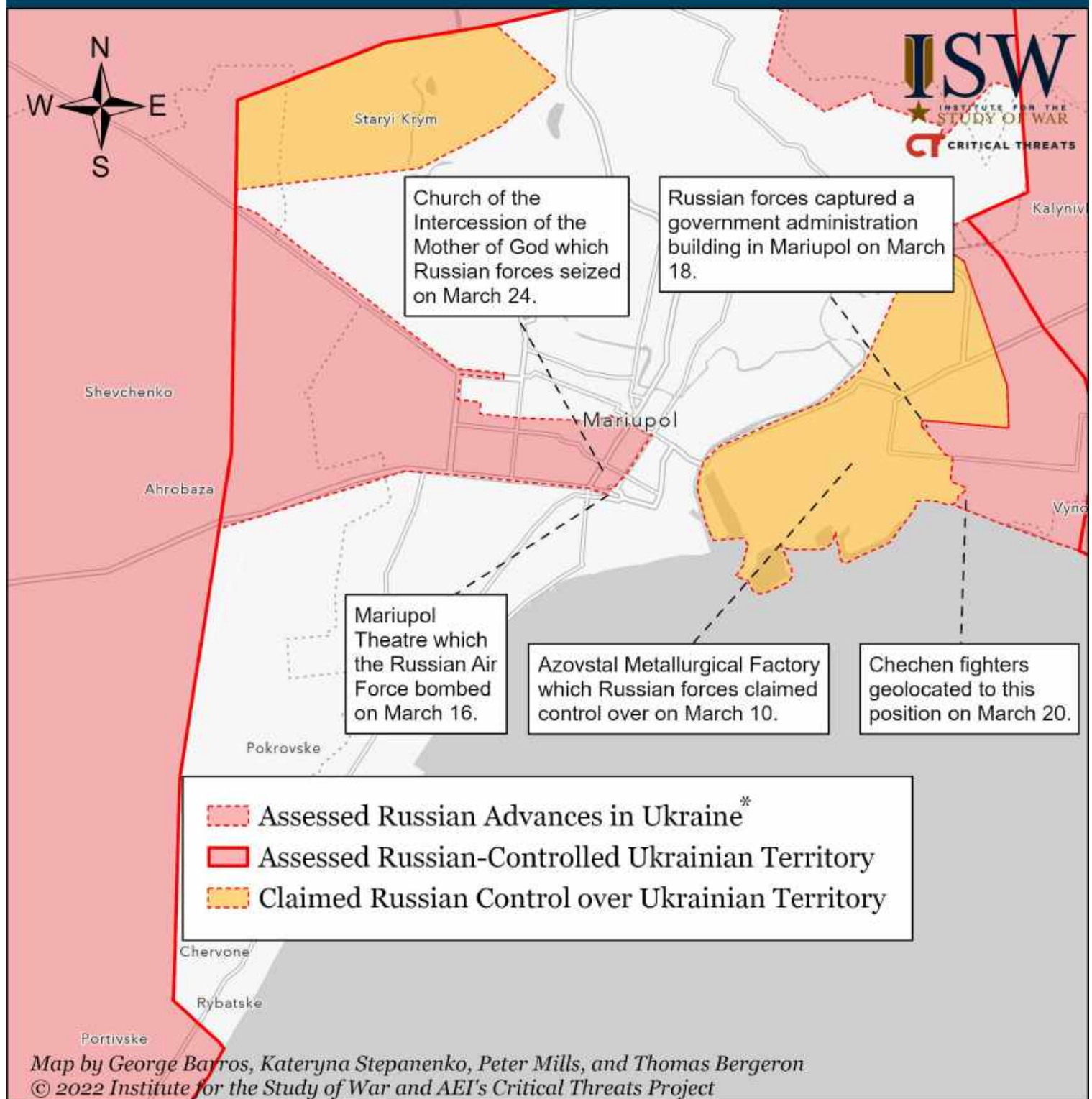
# Assessed Control of Terrain Around Kyiv as of March 23, 2022, 3:00 PM ET



We have updated our map considerably since yesterday to show our current assessment of the probable front line west of Kyiv. Some of the Ukrainian gains shown likely occurred on March 21, but we have only just acquired sufficient evidence and clarity on the Ukrainian operations to reflect them accurately in the map of March 23.

\* Assessed Russian advances are areas where ISW assesses Russian forces have operated in or launched attacks against but do not control.

# Assessed Control of Terrain Around Mariupol as of March 25, 2022, 3:00 ET

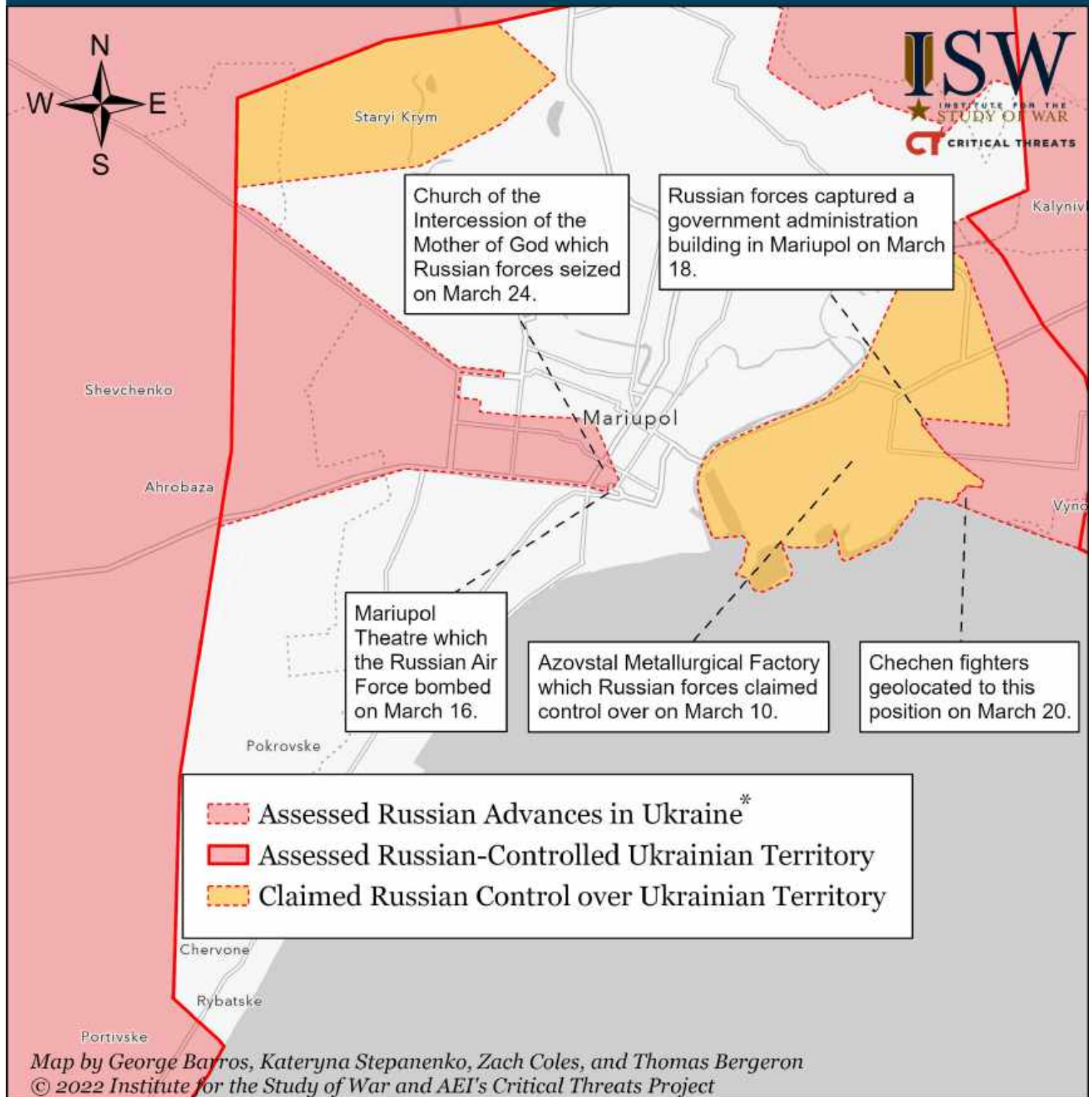


Russian forces continue their grinding advance into Mariupol, which they have encircled and are bombarding. Fighting is proceeding block-by-block and slowly. Russian forces began penetrating Mariupol's city center on March 24. The Ukrainian defenders may hold out for some time and make the Russians pay a high price for taking the city as long as their supplies of food, water, and ammunition hold out.

\* Assessed Russian advances are areas where ISW assesses Russian forces have operated in or launched attacks against but do not control.



# Assessed Control of Terrain Around Mariupol as of March 24, 2022, 3:00 ET

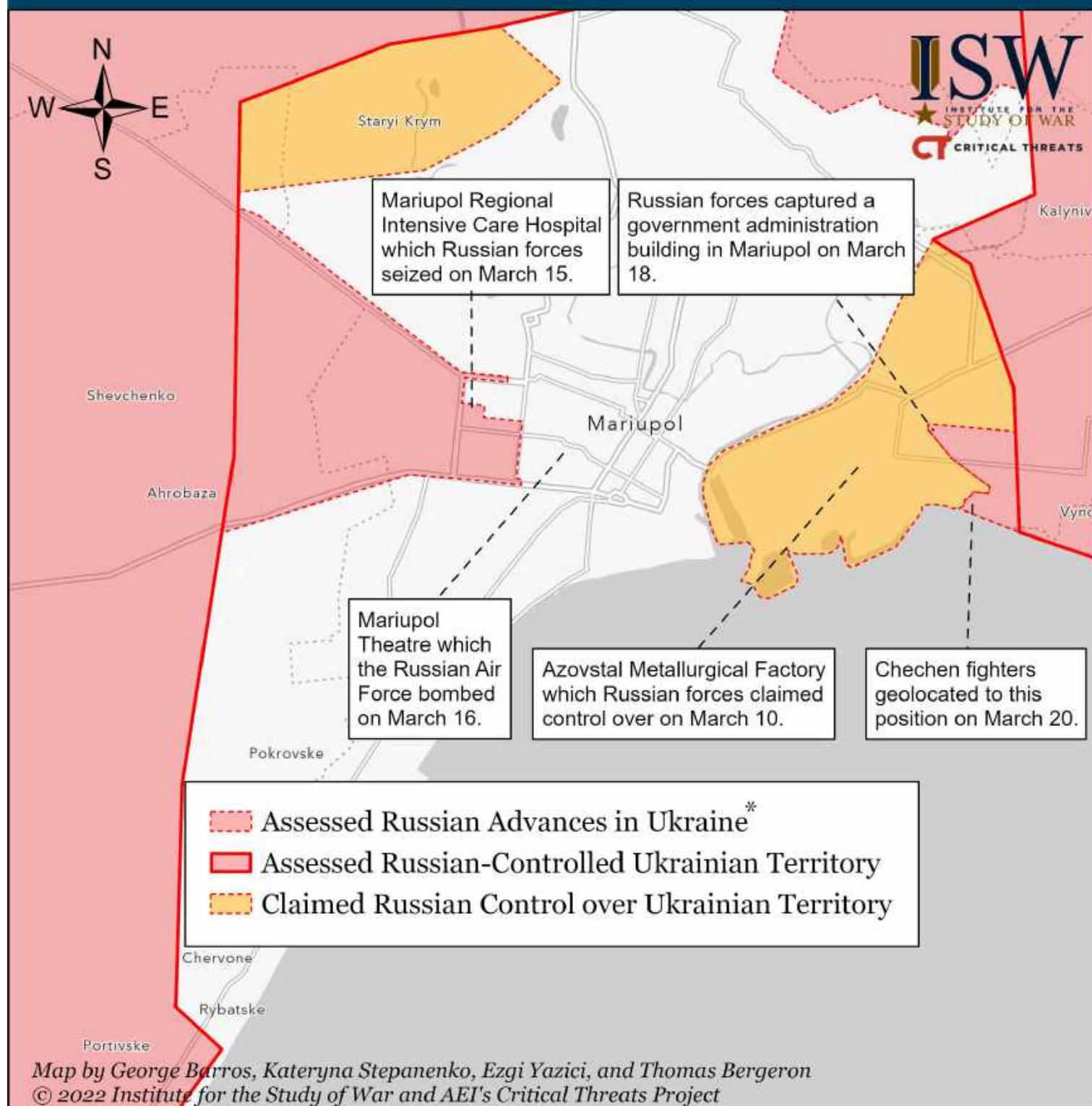


Russian forces continue their grinding advance into Mariupol, which they have encircled and are bombarding. Fighting is proceeding block-by-block and slowly. Russian forces began penetrating Mariupol's city center on March 24. The Ukrainian defenders may hold out for some time and make the Russians pay a high price for taking the city as long as their supplies of food, water, and ammunition hold out.

\* Assessed Russian advances are areas where ISW assesses Russian forces have operated in or launched attacks against but do not control.



# Assessed Control of Terrain Around Mariupol as of March 23, 2022, 3:00 ET



Russian forces continue their grinding advance into Mariupol, which they have encircled and are bombarding. Fighting is proceeding block-by-block and slowly. Much of the heart of the city remains free of Russian control as of March 21. The Ukrainian defenders may hold out for some time and make the Russians pay a high price for taking the city as long as their supplies of food, water, and ammunition hold out.

\* Assessed Russian advances are areas where ISW assesses Russian forces have operated in or launched attacks against but do not control.