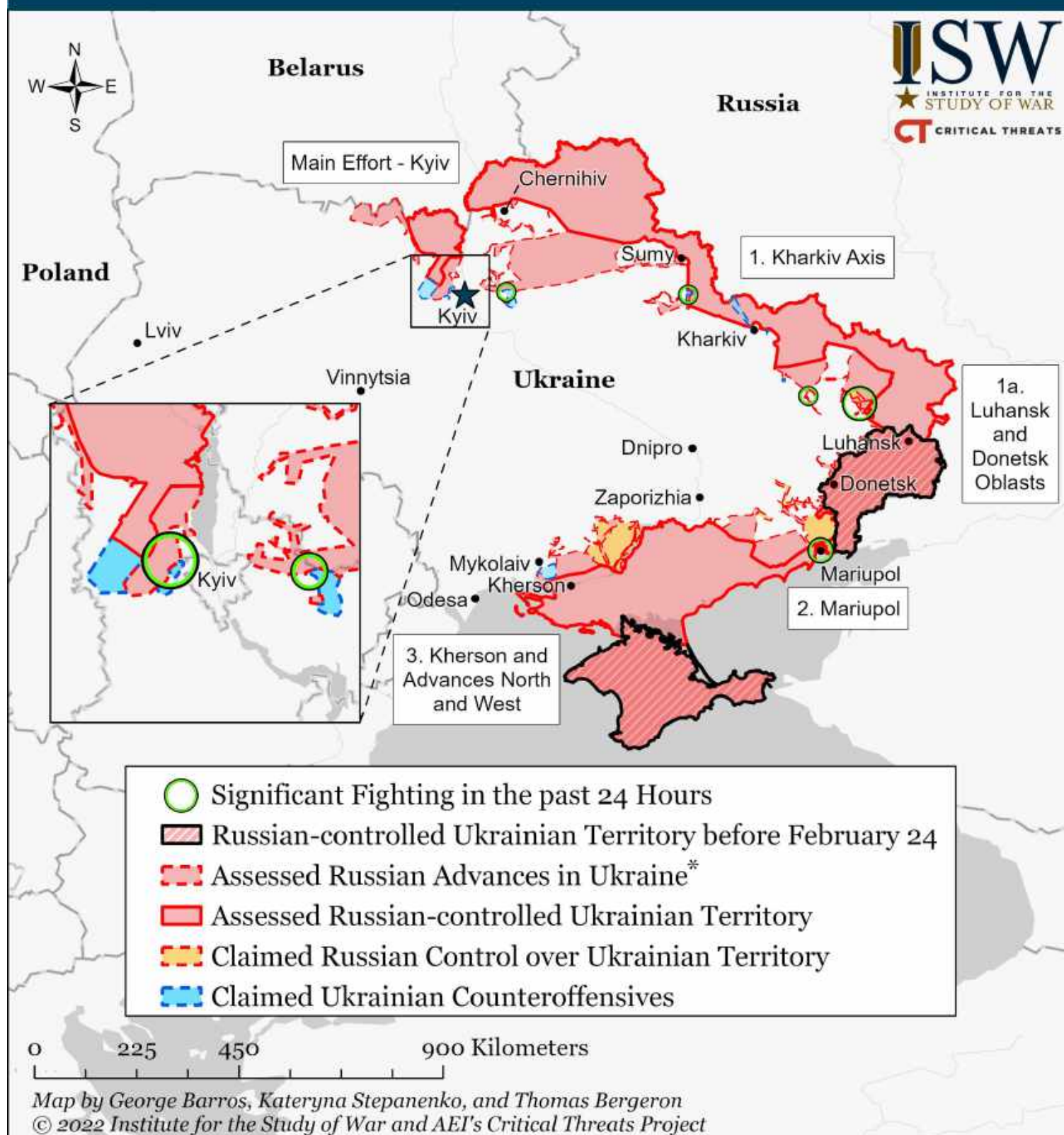
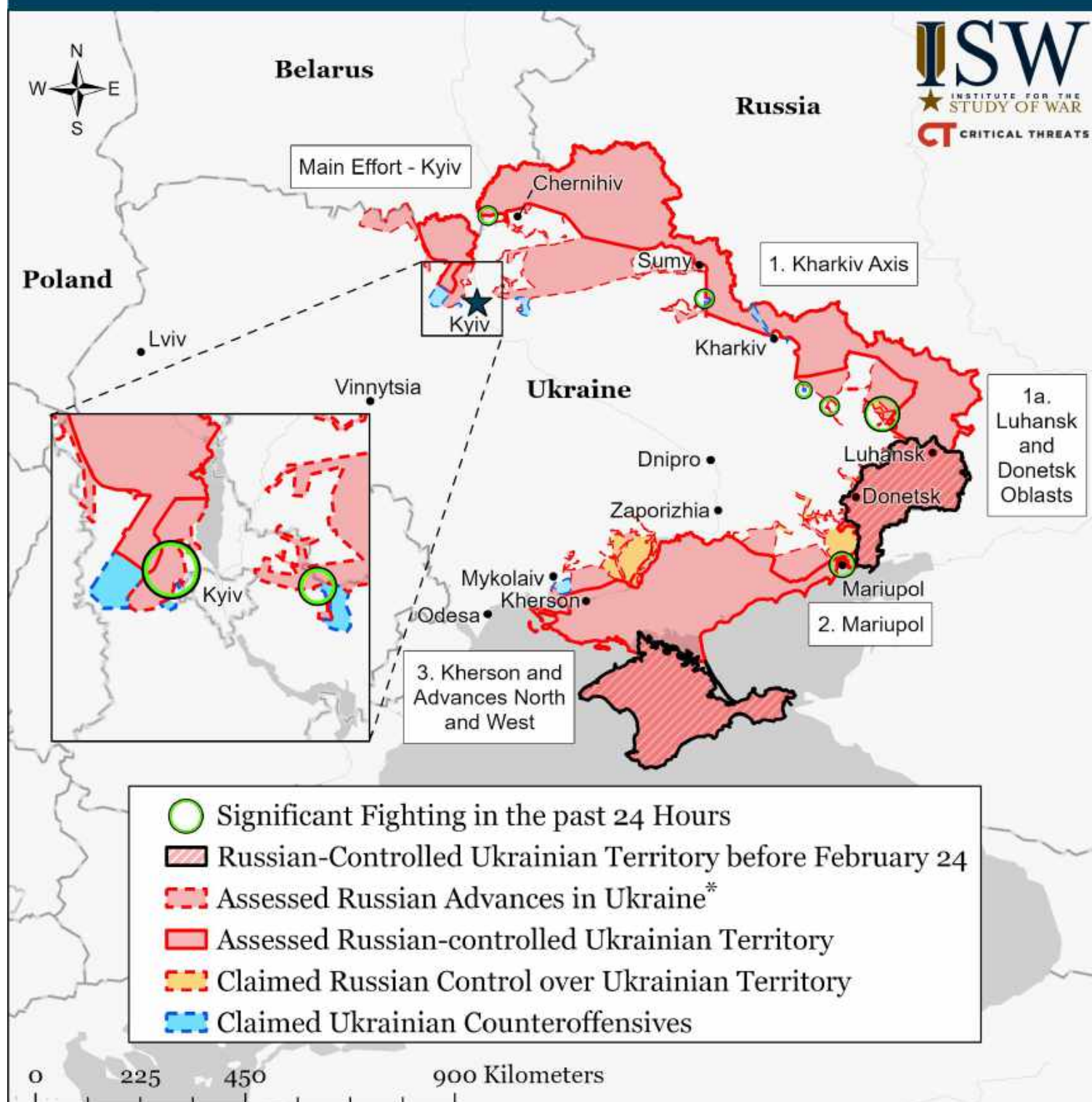


Assessed Control of Terrain in Ukraine and Main Russian Maneuver Axes as of March 28, 2022, 3:00 PM ET



* Assessed Russian advances are areas where ISW assesses Russian forces have operated in or launched attacks against but do not control.

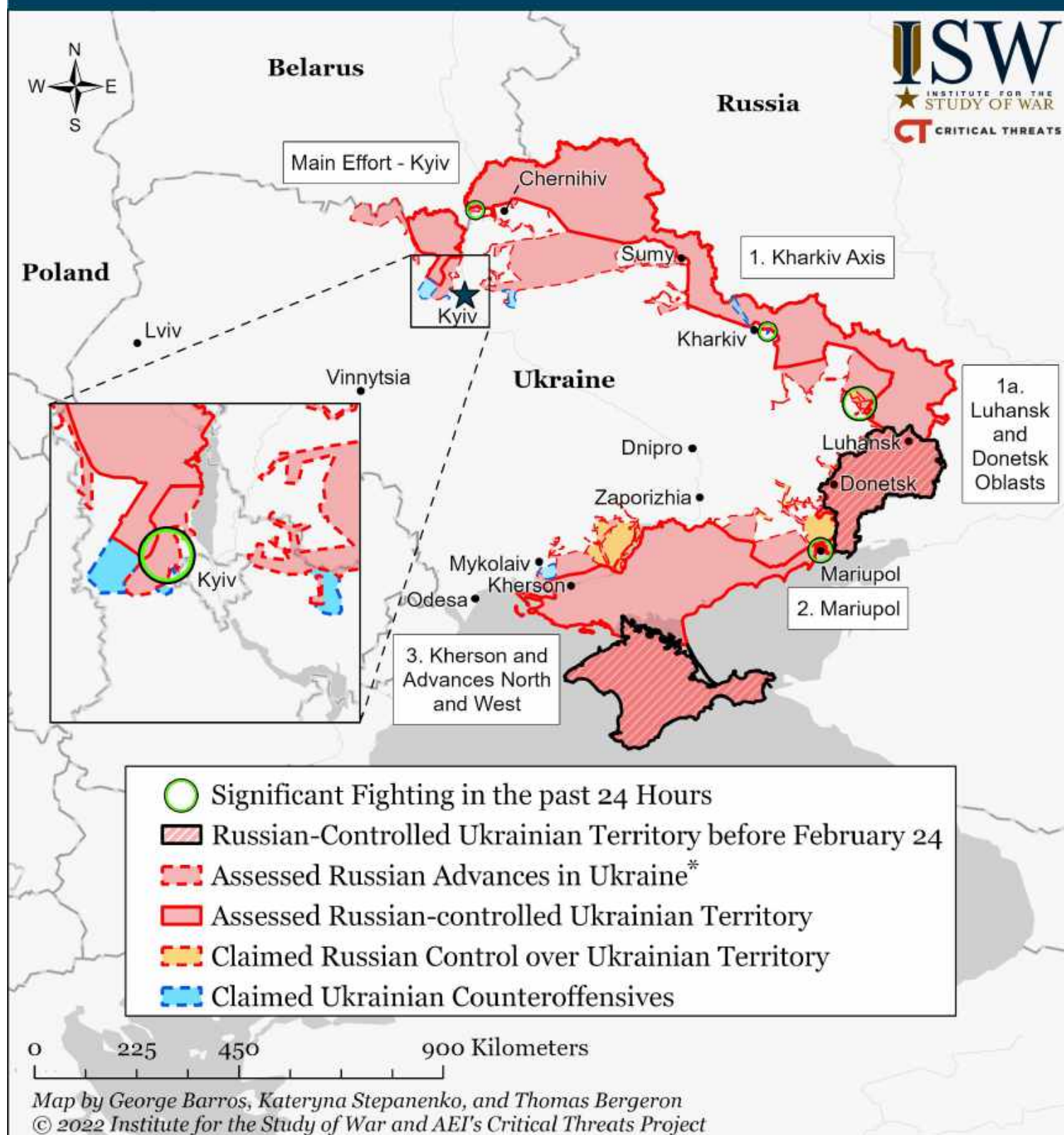
Assessed Control of Terrain in Ukraine and Main Russian Maneuver Axes as of March 27, 2022, 3:00 PM ET



Map by George Barros, Kateryna Stepanenko, Peter Mills and Thomas Bergeron
© 2022 Institute for the Study of War and AEI's Critical Threats Project

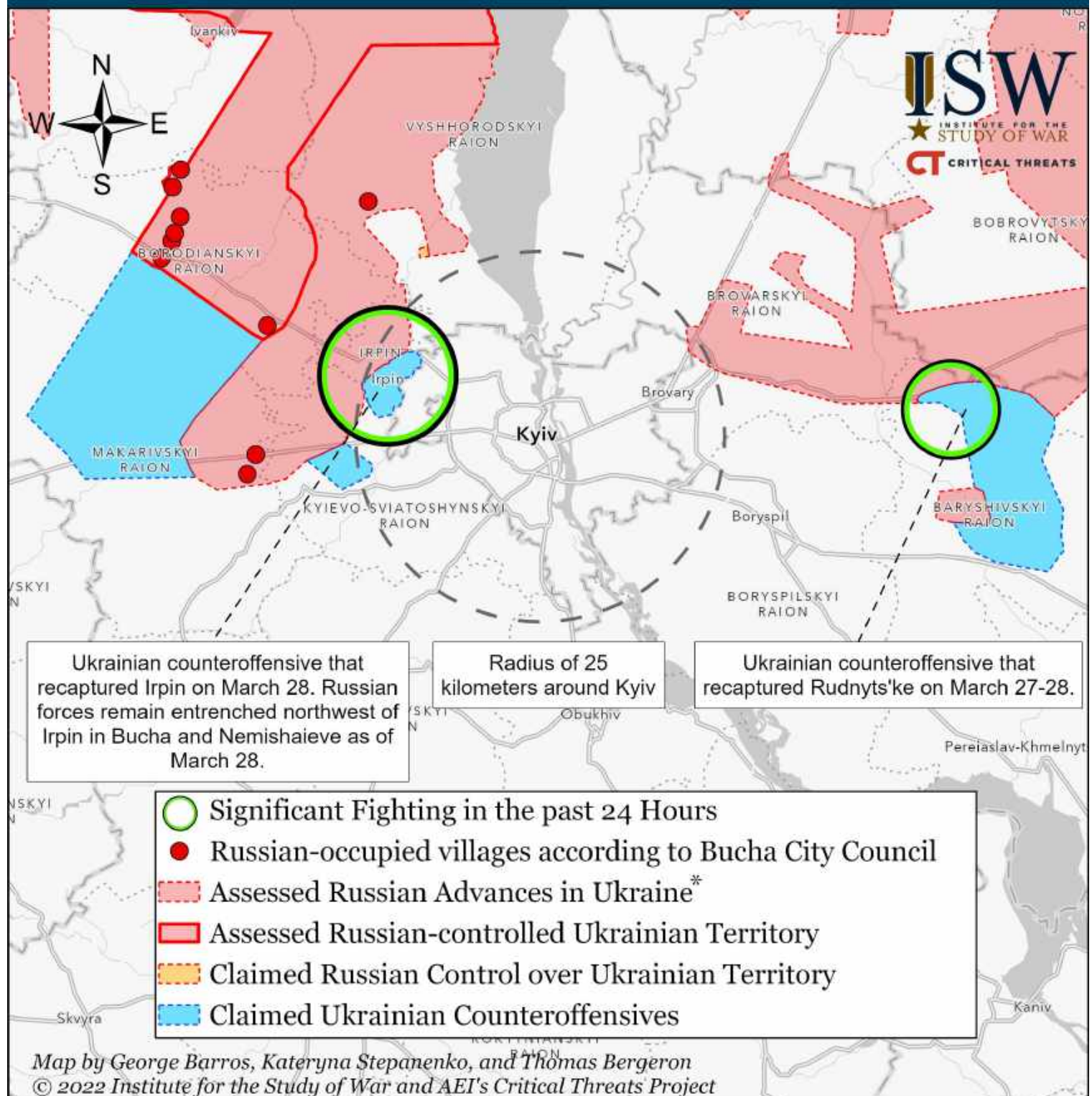
* Assessed Russian advances are areas where ISW assesses Russian forces have operated in or launched attacks against but do not control.

Assessed Control of Terrain in Ukraine and Main Russian Maneuver Axes as of March 26, 2022, 3:00 PM ET



* Assessed Russian advances are areas where ISW assesses Russian forces have operated in or launched attacks against but do not control.

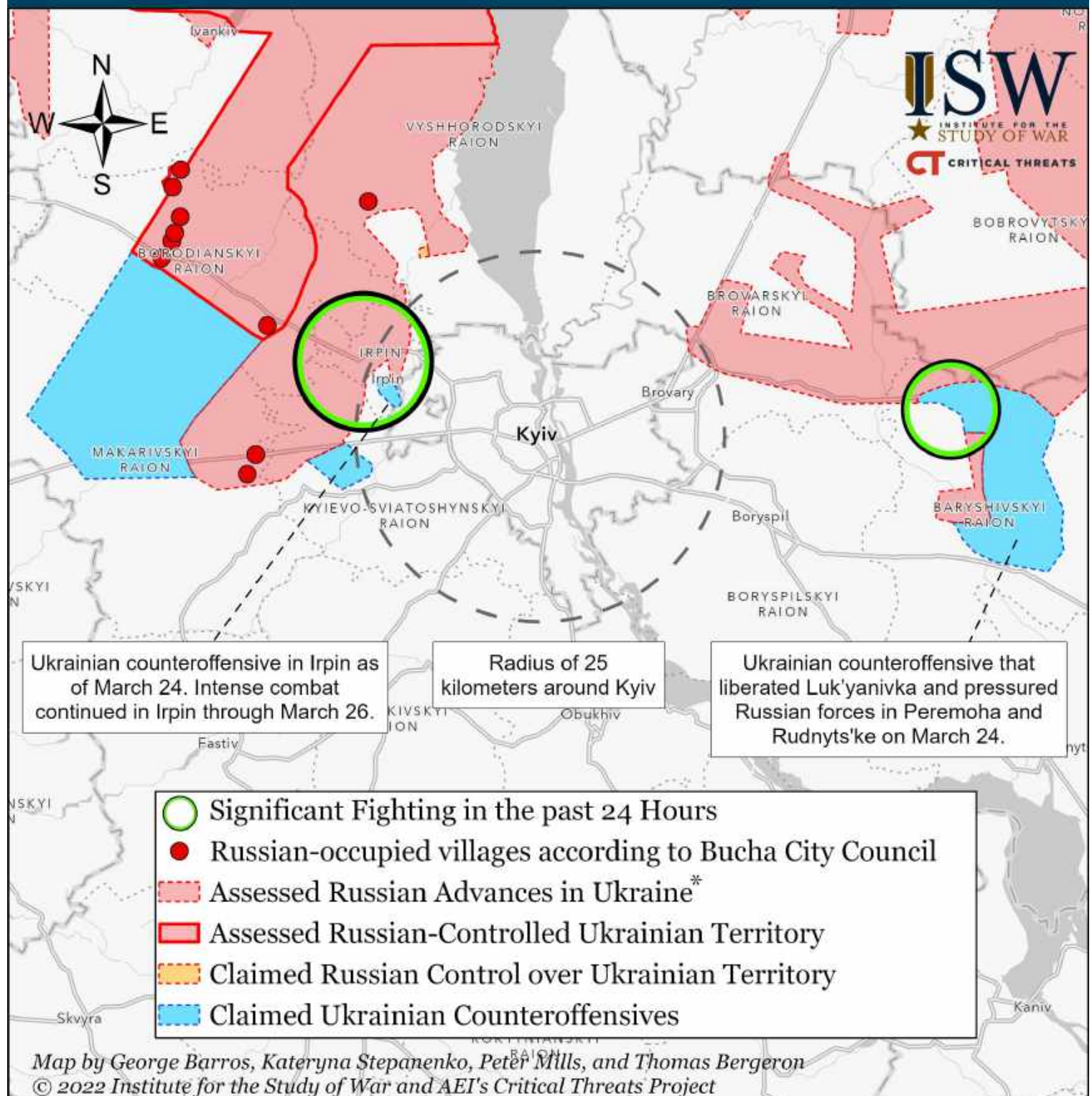
Assessed Control of Terrain Around Kyiv as of March 28, 2022, 3:00 PM ET



Ukrainian forces recaptured the Kyiv suburb of Irpin on March 28. The Mayor of Irpin, Oleksandr Markushin, stated on March 28 that Ukrainian forces intend to use Irpin as a staging ground for further counterattacks on Russian-occupied Bucha, Vorzel, and Hostomel.

* Assessed Russian advances are areas where ISW assesses Russian forces have operated in or launched attacks against but do not control.

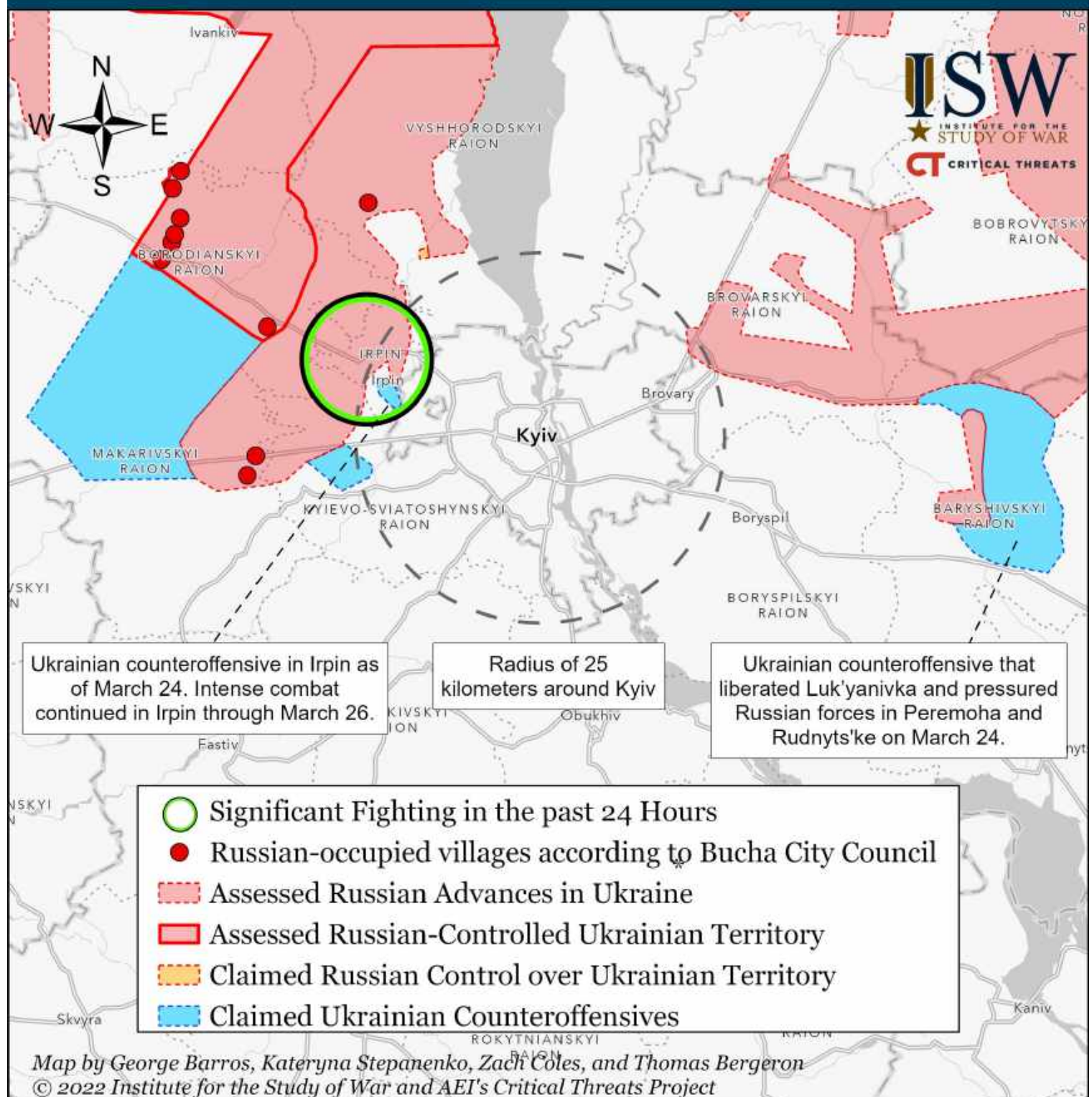
Assessed Control of Terrain Around Kyiv as of March 27, 2022, 3:00 PM ET



ISW did not observe change in control of terrain or assessed Russian advances around Kyiv between March 26 and March 27. Ukrainian forces claim to continue mounting to conduct counterattacks in unspecified areas. We will map these attacks when we observe evidence for them.

* Assessed Russian advances are areas where ISW assesses Russian forces have operated in or launched attacks against but do not control.

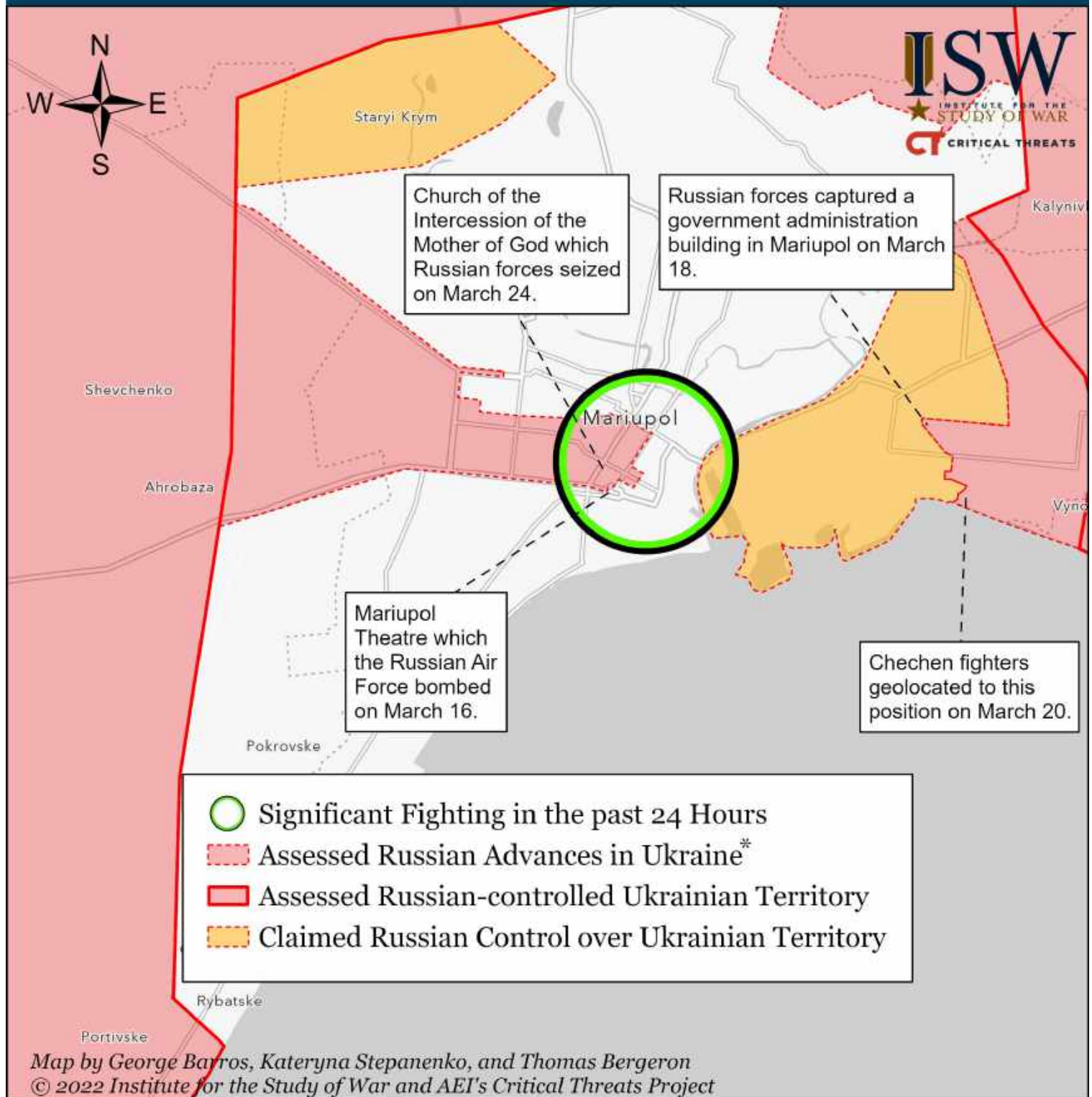
Assessed Control of Terrain Around Kyiv as of March 26, 2022, 3:00 PM ET



ISW did not observe change in control of terrain or assessed Russian advances around Kyiv between March 25 and March 26. Ukrainian forces claim to continue mounting to conduct counterattacks in unspecified areas. We will map these attacks when we observe evidence for them.

* Assessed Russian advances are areas where ISW assesses Russian forces have operated in or launched attacks against but do not control.

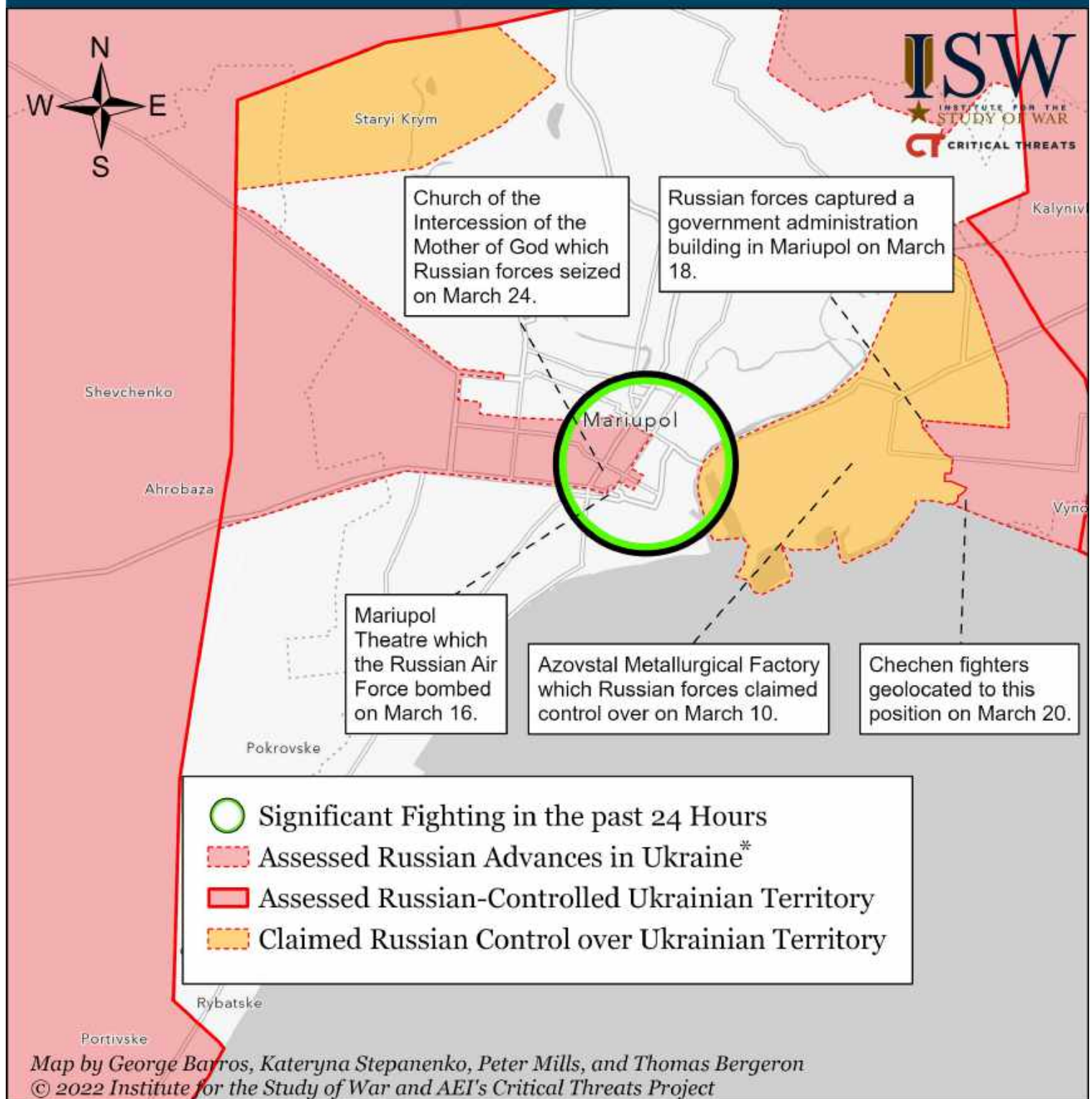
Assessed Control of Terrain Around Mariupol as of March 28, 2022, 3:00 ET



Russian forces continue their grinding advance into Mariupol, which they have encircled and are bombarding. Fighting is proceeding block-by-block and slowly. Russian forces began penetrating Mariupol's city center on March 24. ISW has not observed sufficient evidence to change assessed advances in Mariupol between March 27 and 28, though Russian forces likely have advanced.

* Assessed Russian advances are areas where ISW assesses Russian forces have operated in or launched attacks against but do not control.

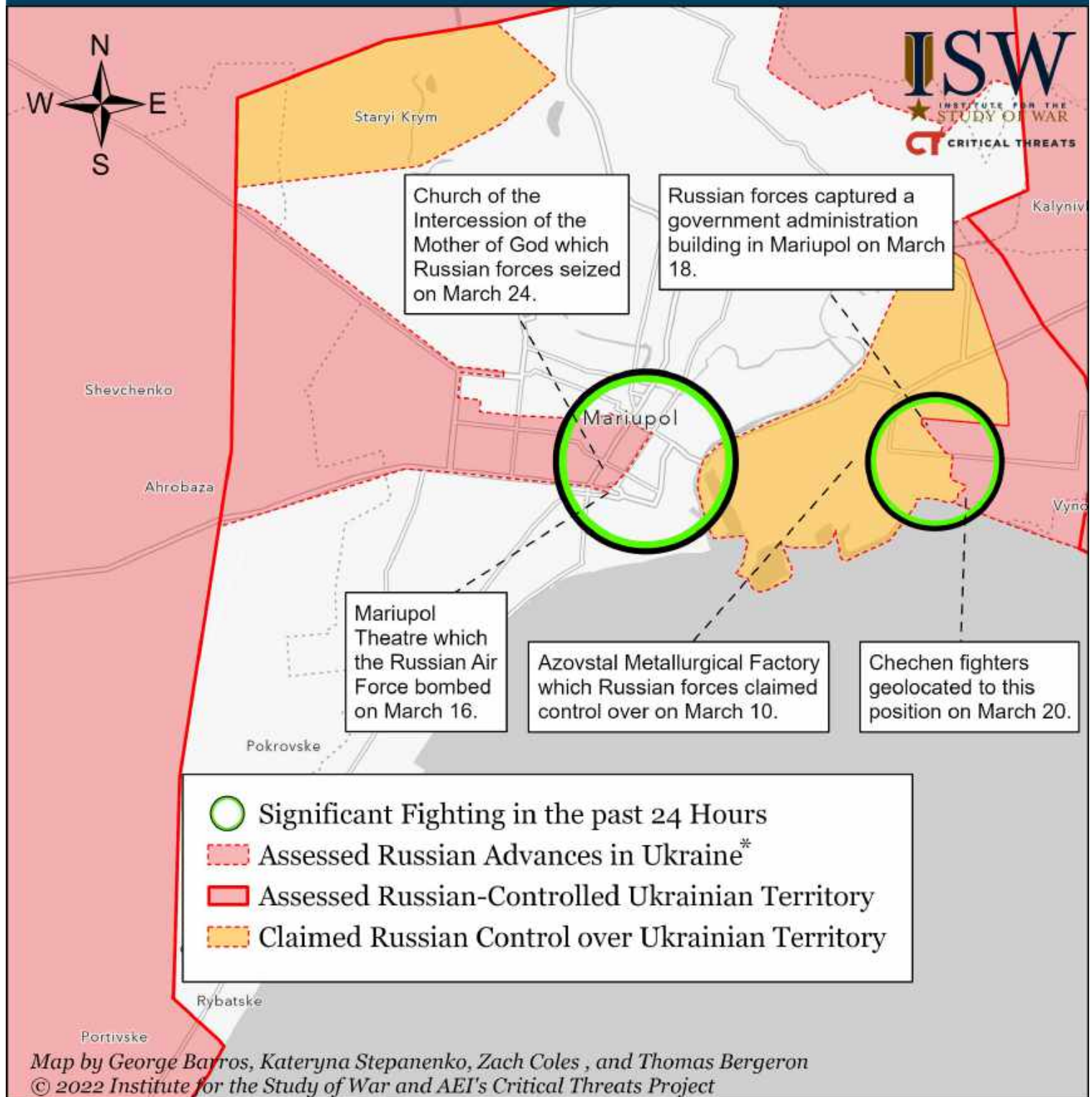
Assessed Control of Terrain Around Mariupol as of March 27, 2022, 3:00 ET



Russian forces continue their grinding advance into Mariupol, which they have encircled and are bombarding. Fighting is proceeding block-by-block and slowly. Russian forces began penetrating Mariupol's city center on March 24. ISW has not observed sufficient evidence to change assessed advances in Mariupol between March 26 and 27, though Russian forces likely have advanced.

* Assessed Russian advances are areas where ISW assesses Russian forces have operated in or launched attacks against but do not control.

Assessed Control of Terrain Around Mariupol as of March 26, 2022, 3:00 ET



Russian forces continue their grinding advance into Mariupol, which they have encircled and are bombarding. Fighting is proceeding block-by-block and slowly. Russian forces began penetrating Mariupol's city center on March 24. ISW has not observed sufficient evidence to change assessed advances in Mariupol between March 25 and 26, though Russian forces likely have advanced.

* Assessed Russian advances are areas where ISW assesses Russian forces have operated in or launched attacks against but do not control.