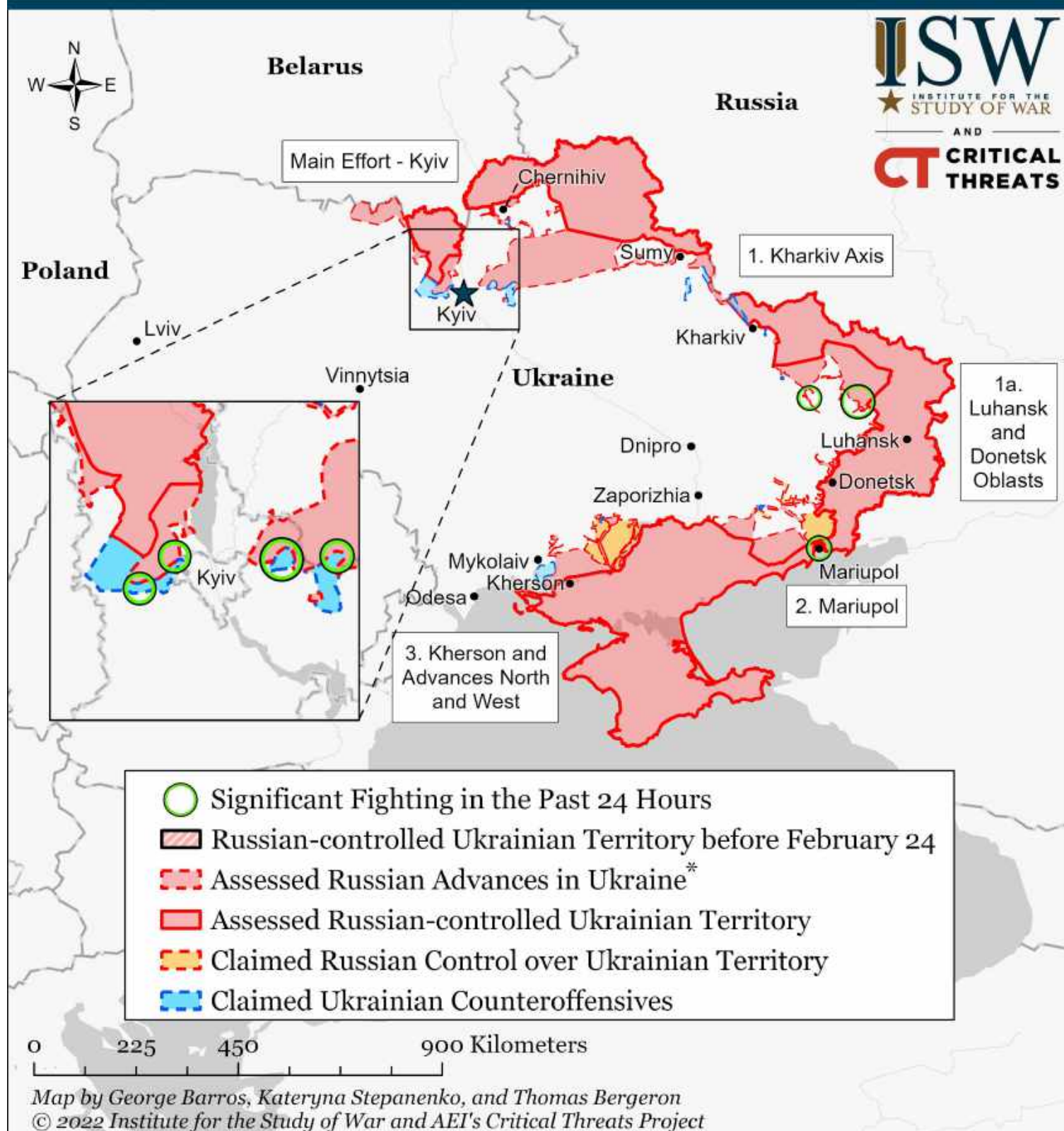
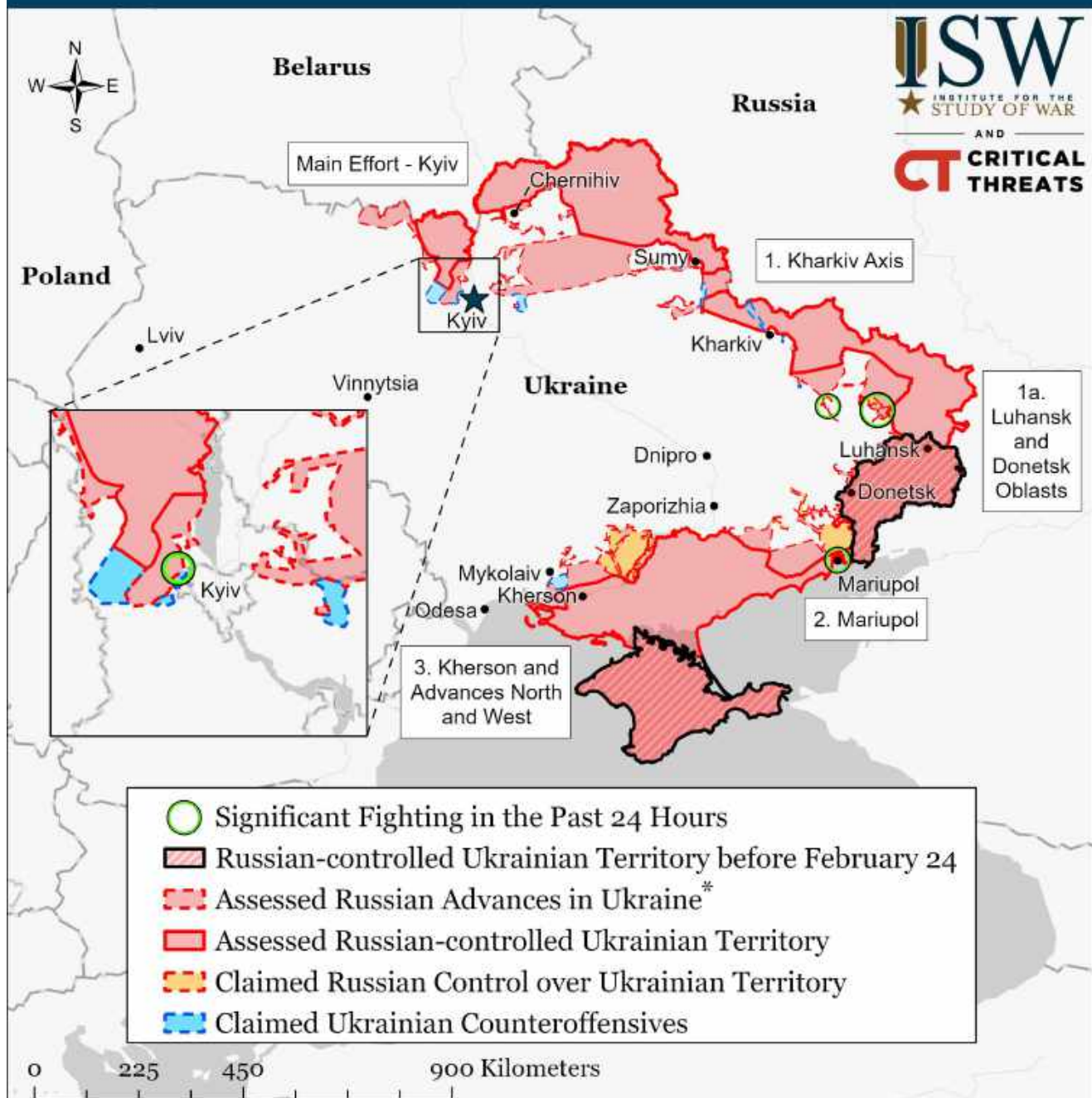


# Assessed Control of Terrain in Ukraine and Main Russian Maneuver Axes as of March 31, 2022, 3:00 PM ET



\* Assessed Russian advances are areas where ISW assesses Russian forces have operated in or launched attacks against but do not control.

# Assessed Control of Terrain in Ukraine and Main Russian Maneuver Axes as of March 30, 2022, 3:00 PM ET

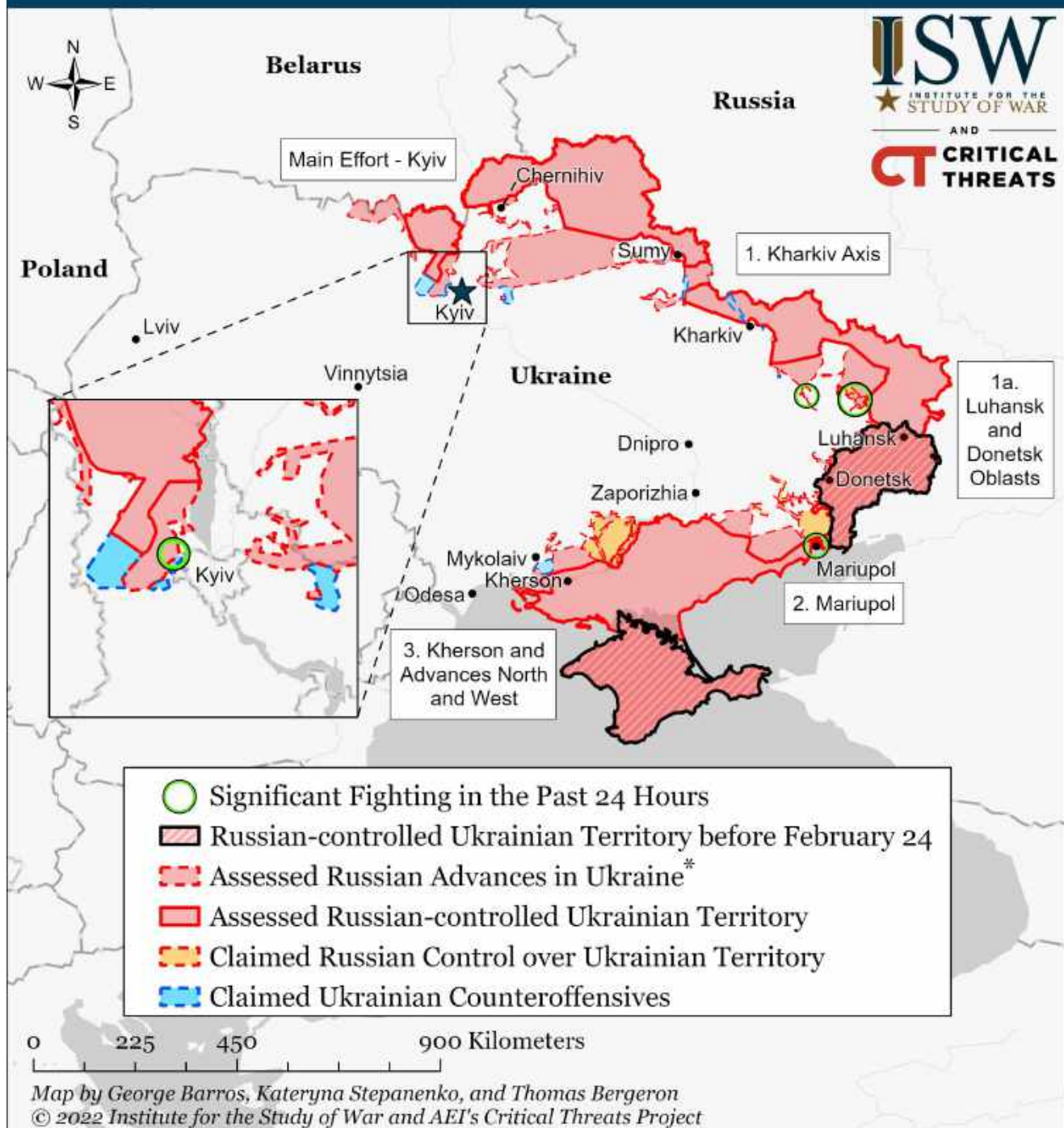


Map by George Barros, Kateryna Stepanenko, and Thomas Bergeron  
© 2022 Institute for the Study of War and AEI's Critical Threats Project

\* Assessed Russian advances are areas where ISW assesses Russian forces have operated in or launched attacks against but do not control.

Note: We have updated our map to show increased Russian areas of controlled terrain and advances around Ivankiv based on observing new data about Russian forces operating in that area. This expanded area in our map of March 30 does not indicate that Russian forces made further gains, only that we have received sufficiently detailed and reliable reporting of previous gains to adjust our map. ISW will update its assessments based on verified information.

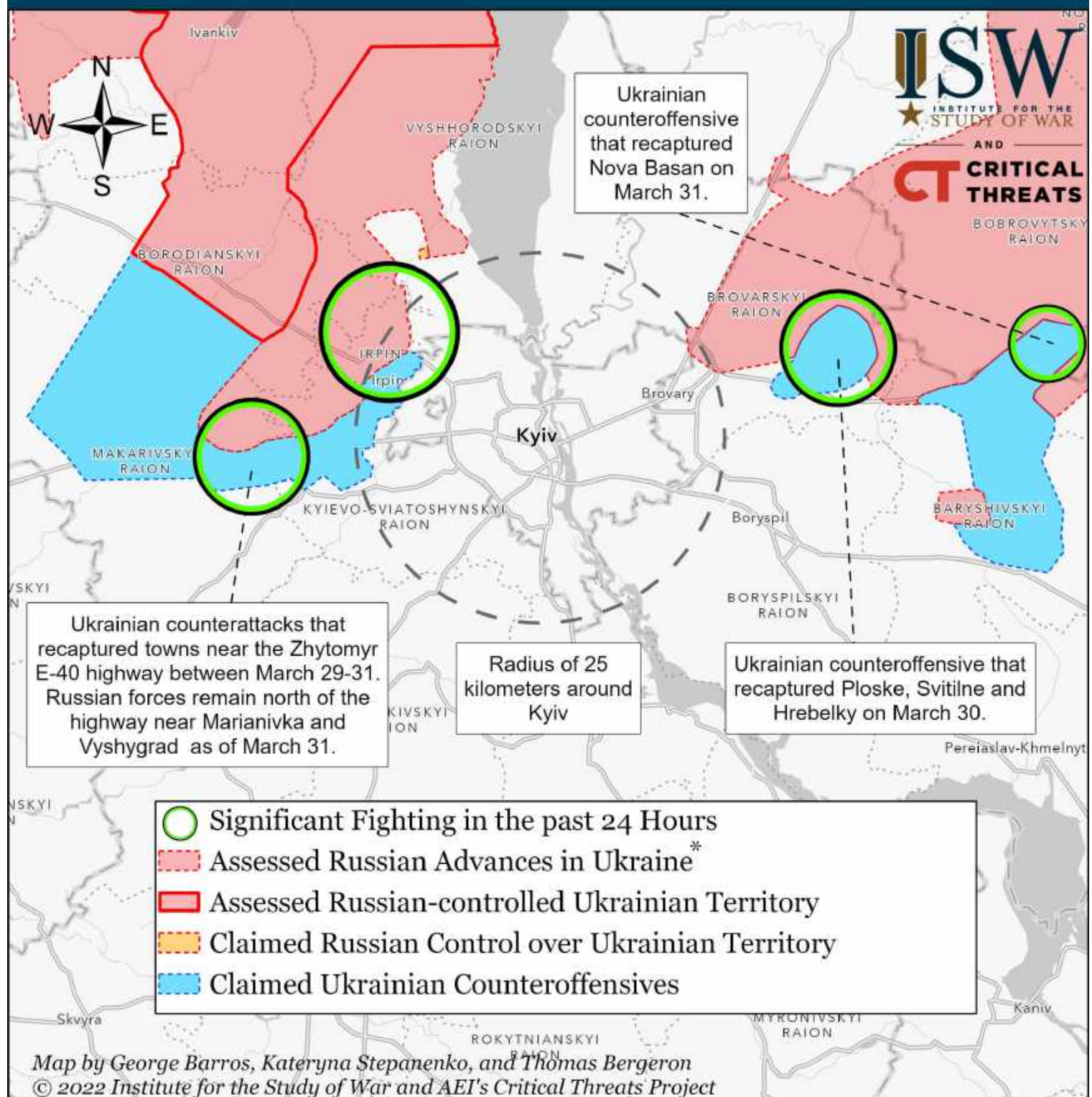
# Assessed Control of Terrain in Ukraine and Main Russian Maneuver Axes as of March 29, 2022, 3:00 PM ET



\* Assessed Russian advances are areas where ISW assesses Russian forces have operated in or launched attacks against but do not control.

Note: We have updated our map to show decreased Russian areas of controlled terrain around Chernihiv and Sumy oblasts based on observing new data about Russian force withdrawals from those areas. Russian forces may be preparing to take up a defensive position along the Snov River east of Chernihiv, as they have destroyed bridges in a number of towns along that river according to the March 28 Ukrainian General Staff report. We also downgraded assessed Russian control in Sumy near Trostianets and Boromilia, given unconfirmed reports of Ukrainian counterattacks in Krasnopillia and Slavhorod. ISW will update its assessments based on verified information.

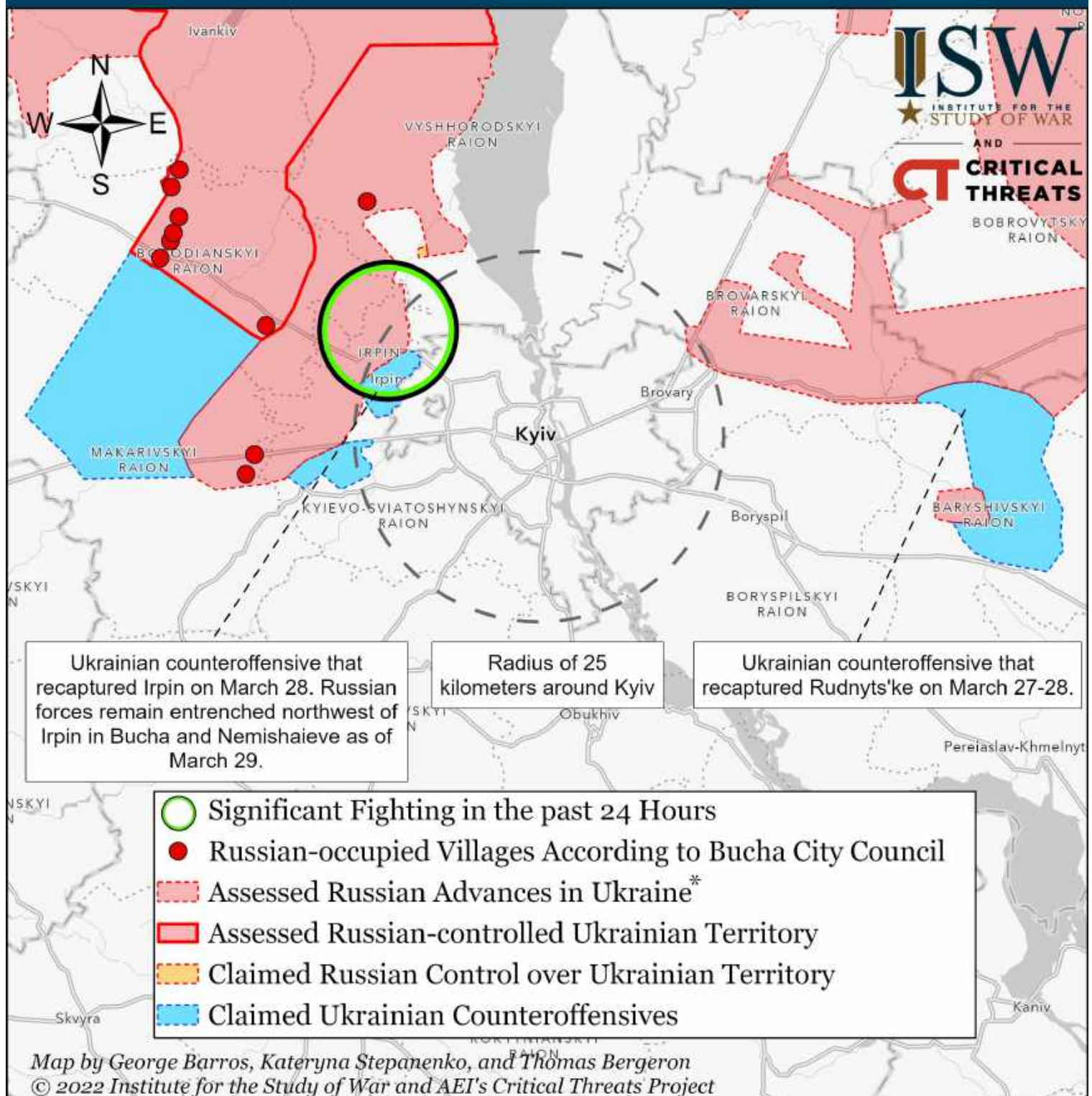
# Assessed Control of Terrain Around Kyiv as of March 31, 2022, 3:00 PM ET



Ukrainian forces recaptured several towns near the Zhytomyr E-40 highway south east of Kyiv on March 29-31. Ukrainian forces recaptured Ploske, Svitline and Hrebelky east of Brovary on March 30. Ukrainian forces also recaptured Nova Basan - a key point on the H-07 highway that runs east to Brovary on March 31. Ukraine's control of the H-07 highway will degrade Russia's ability to maintain forces near Brovary's eastern outskirts.

\* Assessed Russian advances are areas where ISW assesses Russian forces have operated in or launched attacks against but do not control.

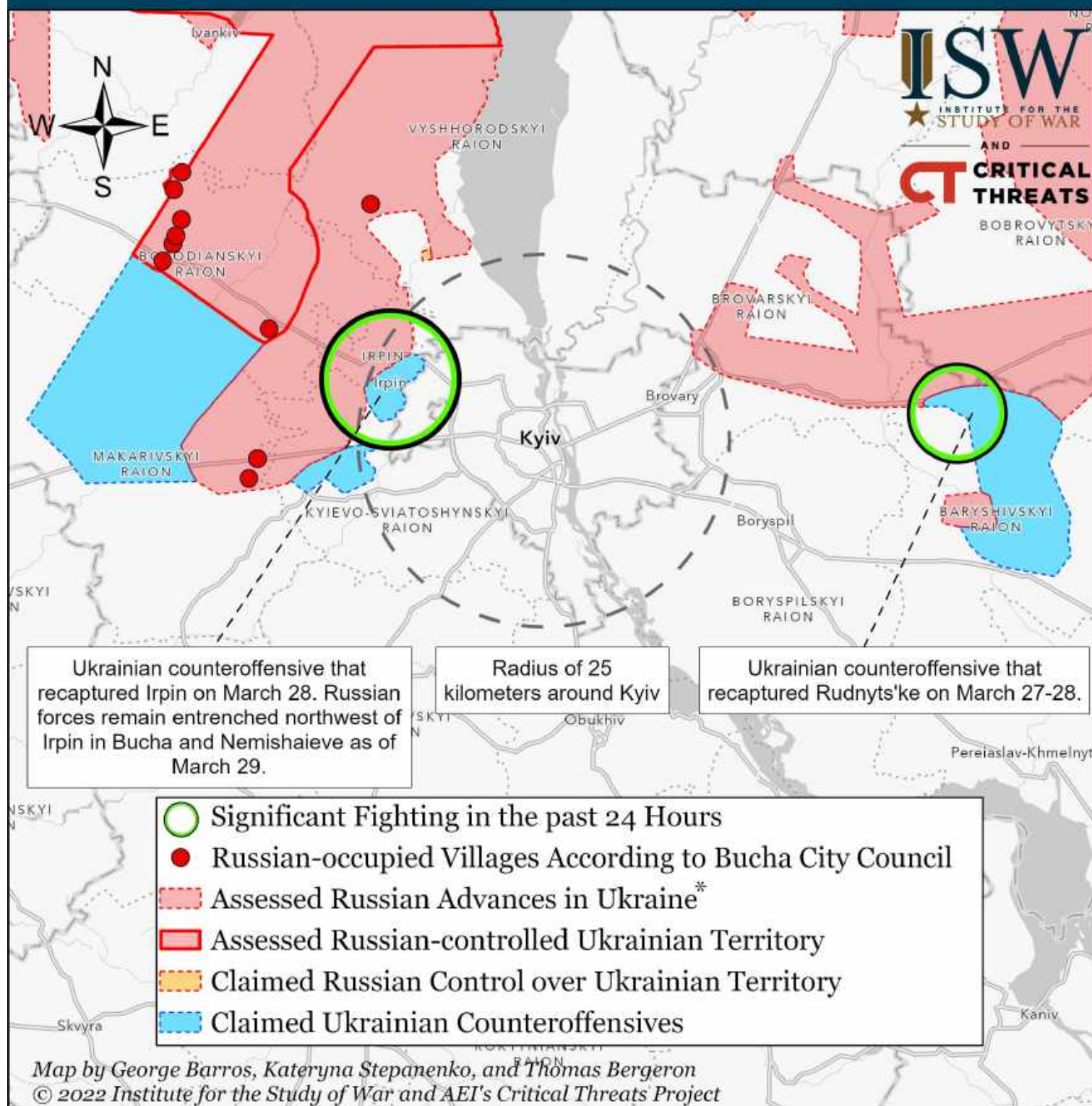
# Assessed Control of Terrain Around Kyiv as of March 30, 2022, 3:00 PM ET



Control of terrain did not change significantly on March 30. Ukrainian forces recaptured the Kyiv suburb of Irpin on March 28. The Mayor of Irpin, Oleksandr Markushin, stated on March 28 that Ukrainian forces intend to use Irpin as a staging ground for further counterattacks on Russian-occupied Bucha, Vorzel, and Hostomel.

\* Assessed Russian advances are areas where ISW assesses Russian forces have operated in or launched attacks against but do not control.

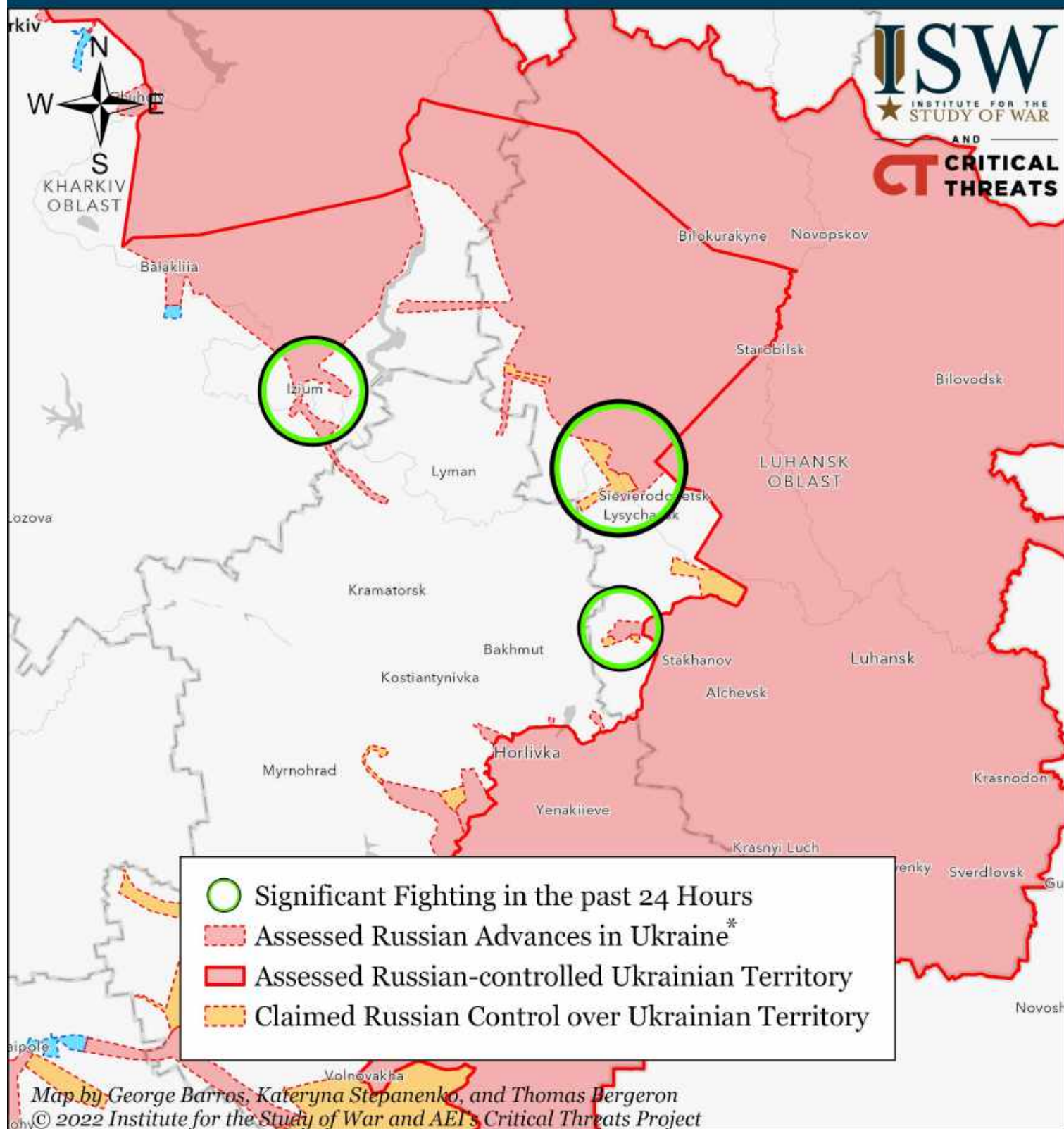
# Assessed Control of Terrain Around Kyiv as of March 29, 2022, 3:00 PM ET



Ukrainian forces recaptured the Kyiv suburb of Irpin on March 28. The Mayor of Irpin, Oleksandr Markushin, stated on March 28 that Ukrainian forces intend to use Irpin as a staging ground for further counterattacks on Russian-occupied Bucha, Vorzel, and Hostomel.

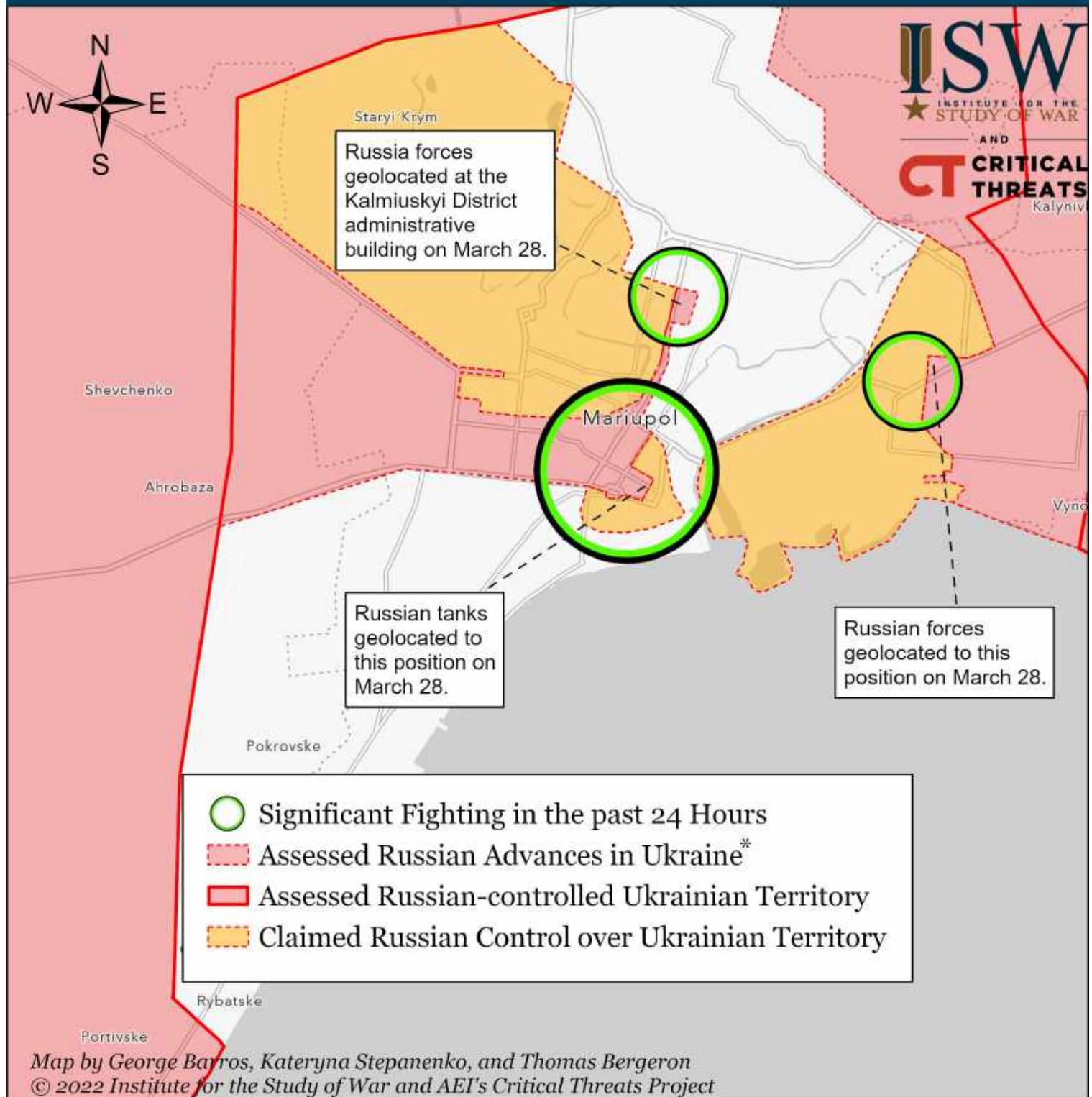
\* Assessed Russian advances are areas where ISW assesses Russian forces have operated in or launched attacks against but do not control.

# Assessed Control of Terrain Around Luhansk as of March 31, 2022, 3:00 ET



\* Assessed Russian advances are areas where ISW assesses Russian forces have operated in or launched attacks against but do not control.

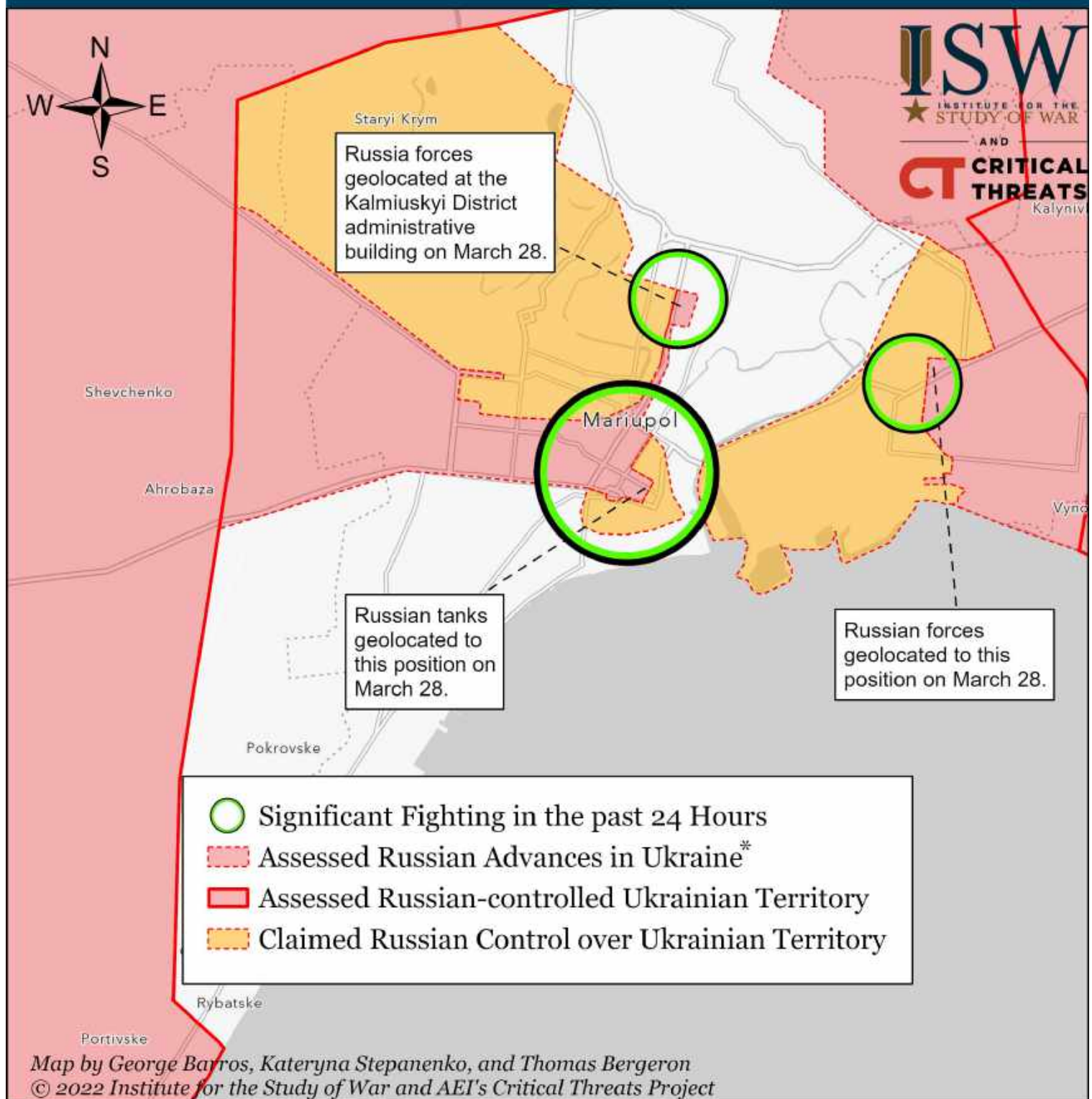
# Assessed Control of Terrain Around Mariupol as of March 31, 2022, 3:00 ET



Russian forces continue their grinding advance into Mariupol, which they have encircled and are bombarding. Fighting is proceeding block-by-block and slowly. Russian forces began penetrating Mariupol's city center on March 24. ISW has not observed sufficient evidence to change assessed advances in Mariupol between March 30 and 31, though Russian forces likely have advanced.

\* Assessed Russian advances are areas where ISW assesses Russian forces have operated in or launched attacks against but do not control.

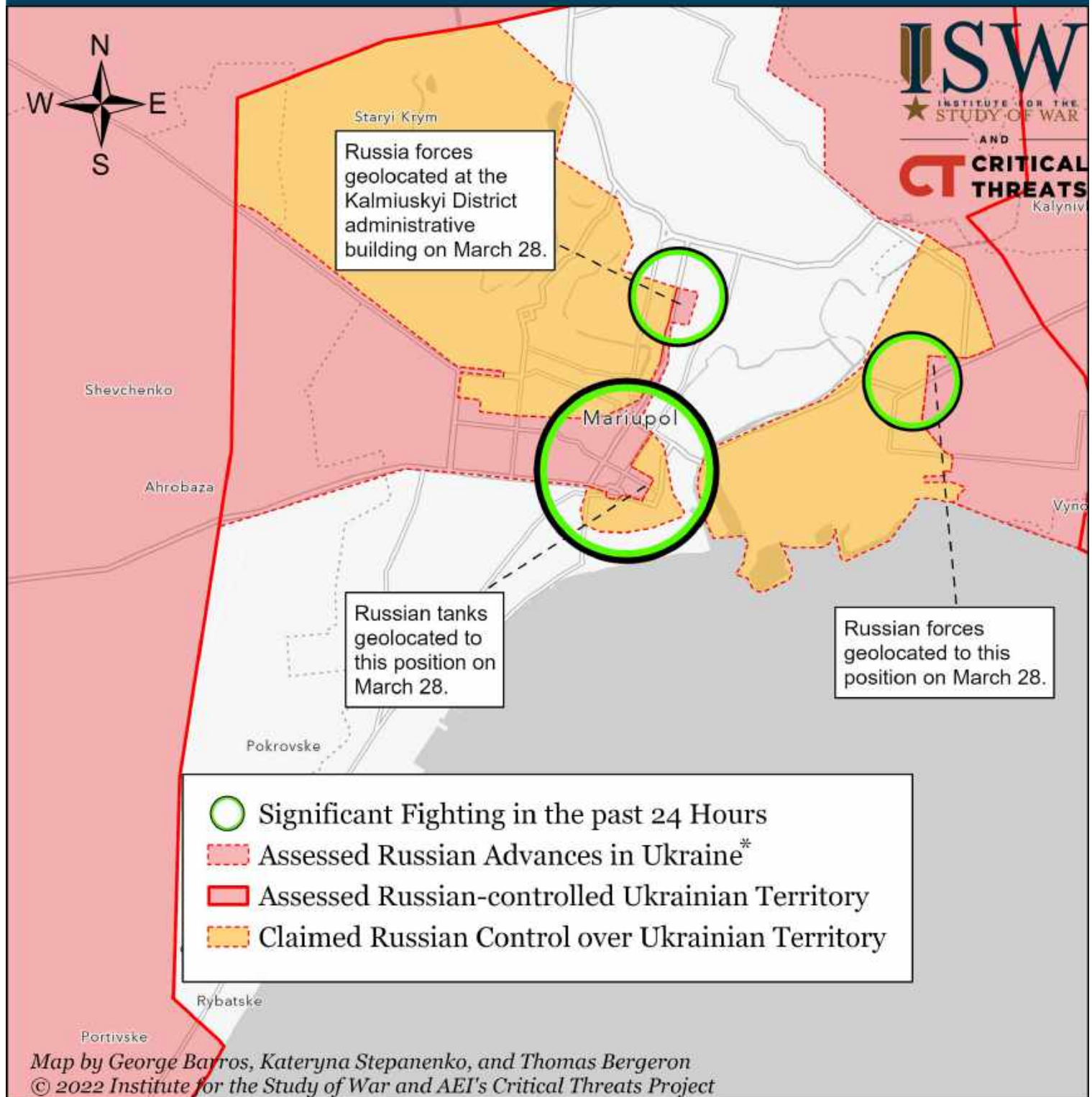
# Assessed Control of Terrain Around Mariupol as of March 30, 2022, 3:00 ET



Russian forces continue their grinding advance into Mariupol, which they have encircled and are bombarding. Fighting is proceeding block-by-block and slowly. Russian forces began penetrating Mariupol's city center on March 24. ISW has not observed sufficient evidence to change assessed advances in Mariupol between March 29 and 30, though Russian forces likely have advanced.

\* Assessed Russian advances are areas where ISW assesses Russian forces have operated in or launched attacks against but do not control.

# Assessed Control of Terrain Around Mariupol as of March 29, 2022, 3:00 ET



Russian forces continue their grinding advance into Mariupol, which they have encircled and are bombarding. Fighting is proceeding block-by-block and slowly. Russian forces began penetrating Mariupol's city center on March 24. The Donetsk People's Republic's (DNR) First Deputy Information Ministry Head Denil Bezsonov claimed that DNR troops took control of the center of Mariupol on March 29.

\* Assessed Russian advances are areas where ISW assesses Russian forces have operated in or launched attacks against but do not control.