

Assessed Control of Terrain in Ukraine and Main Russian Maneuver Axes as of April 09, 2022, 3:00 PM ET



Map by George Barros, Kateryna Stepanenko, and Thomas Bergeron
© 2022 Institute for the Study of War and AEI's Critical Threats Project

* Assessed Russian advances are areas where ISW assesses Russian forces have operated in or launched attacks against but do not control.

Assessed Control of Terrain in Ukraine and Main Russian Maneuver Axes as of April 08, 2022, 3:00 PM ET



* Assessed Russian advances are areas where ISW assesses Russian forces have operated in or launched attacks against but do not control.

Note: The disorderly withdrawal of Russian forces from around Kyiv makes precise mapping of the situation in Kyiv, Chernihiv, and Sumy oblasts difficult. There are likely no organized Russian defensive positions in those oblasts, but Ukrainian forces are conducting operations to clear "lost orcs"--Russians left behind in the withdrawal. We will not attempt to map those clearing operations. Ukrainian forces may already have regained control of more of Chernihiv and Sumy oblasts than we depict, but we do not yet have sufficient evidence to adjust our assessed areas of advance beyond those shown here. The situation will likely clarify over the next few days, and we will adjust the advance and / or control lines accordingly.

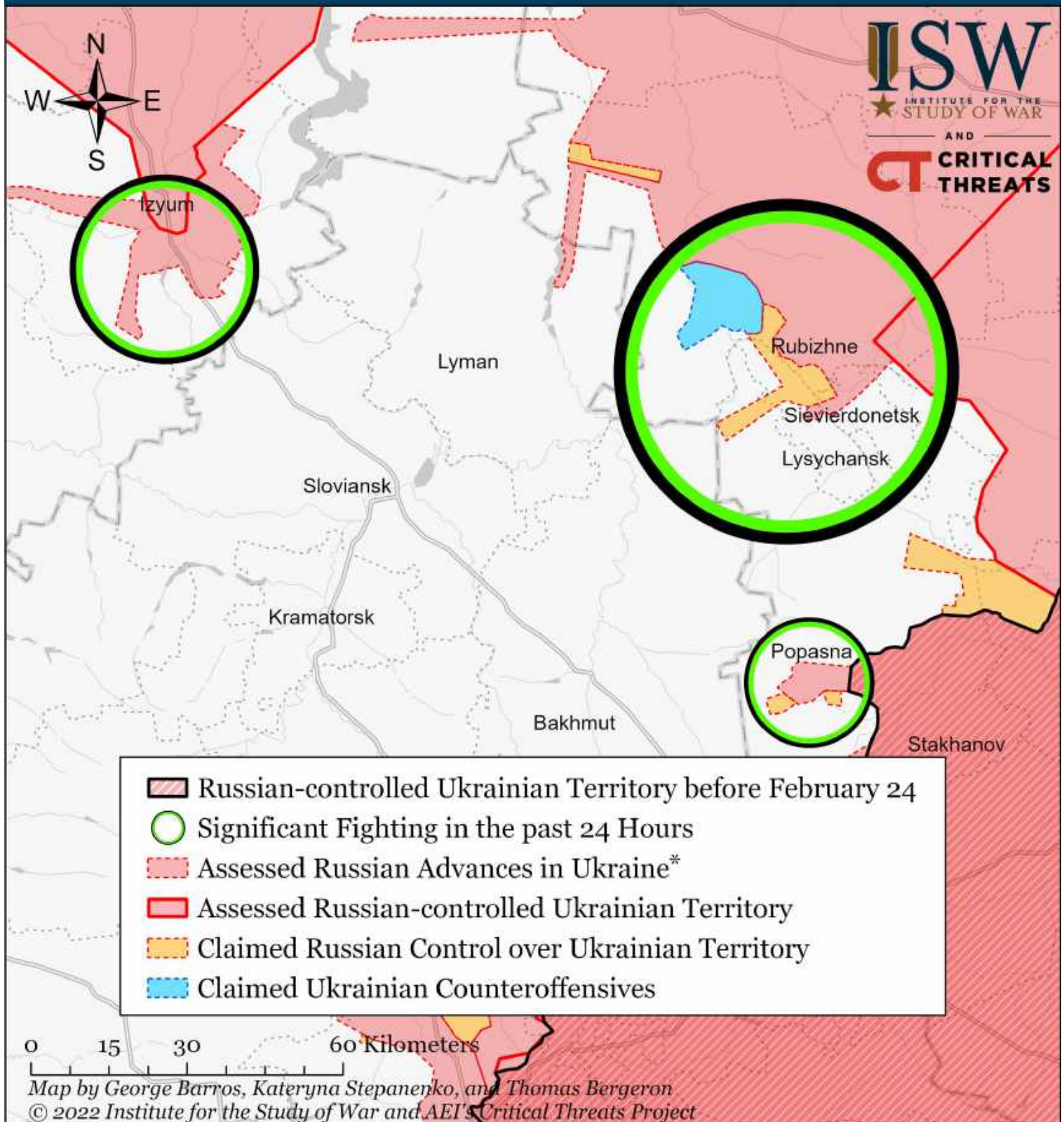
Assessed Control of Terrain in Ukraine and Main Russian Maneuver Axes as of April 07, 2022, 3:00 PM ET



* Assessed Russian advances are areas where ISW assesses Russian forces have operated in or launched attacks against but do not control.

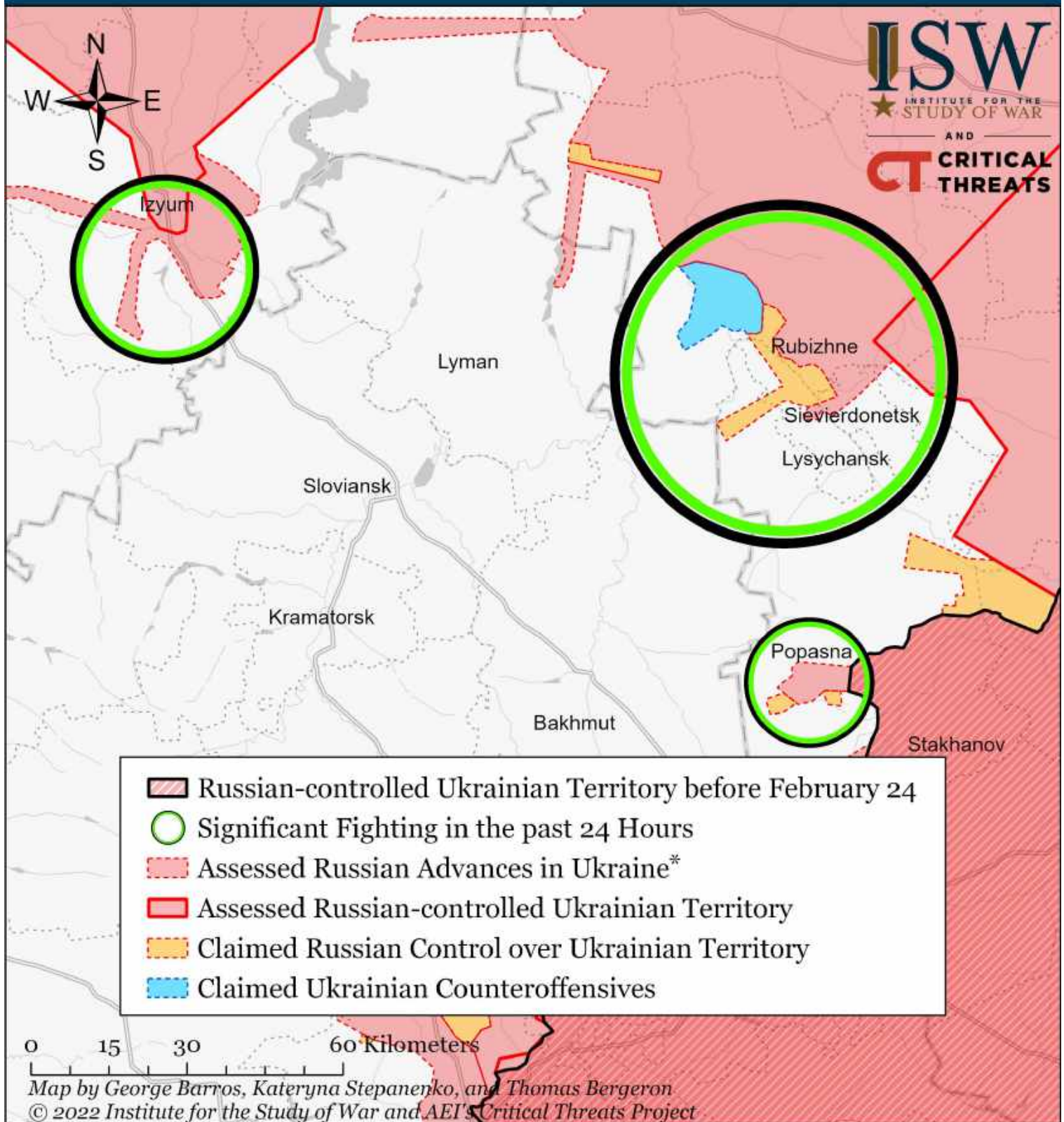
Note: The disorderly withdrawal of Russian forces from around Kyiv makes precise mapping of the situation in Kyiv, Chernihiv, and Sumy oblasts difficult. There are likely no organized Russian defensive positions in those oblasts, but Ukrainian forces are conducting operations to clear "lost orcs"--Russians left behind in the withdrawal. We will not attempt to map those clearing operations. Ukrainian forces may already have regained control of more of Chernihiv and Sumy oblasts than we depict, but we do not yet have sufficient evidence to adjust our assessed areas of advance beyond those shown here. The situation will likely clarify over the next few days, and we will adjust the advance and / or control lines accordingly.

Assessed Control of Terrain Around Luhansk as of April 09, 2022, 3:00 ET



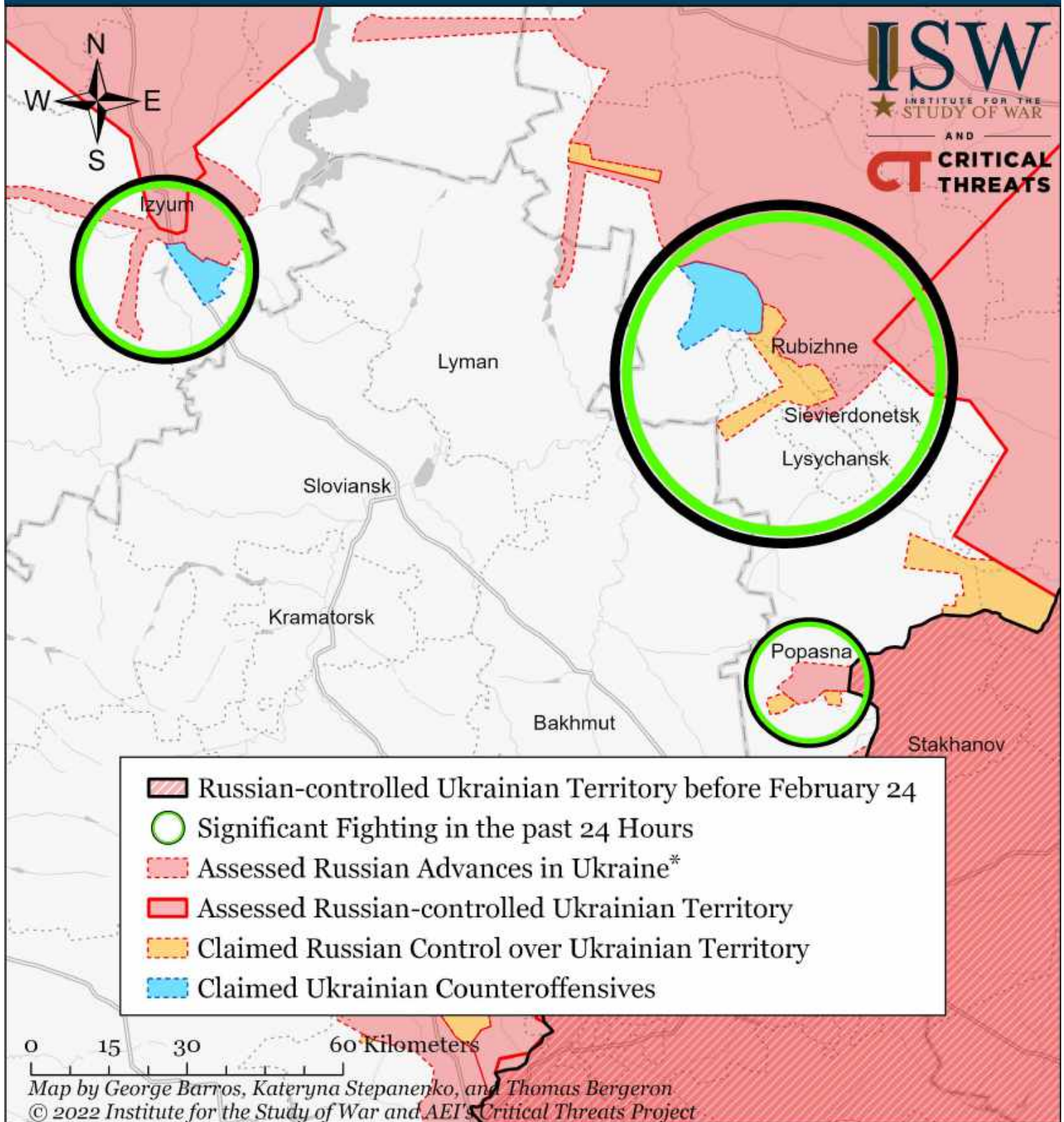
* Assessed Russian advances are areas where ISW assesses Russian forces have operated in or launched attacks against but do not control.

Assessed Control of Terrain Around Luhansk as of April 08, 2022, 3:00 ET



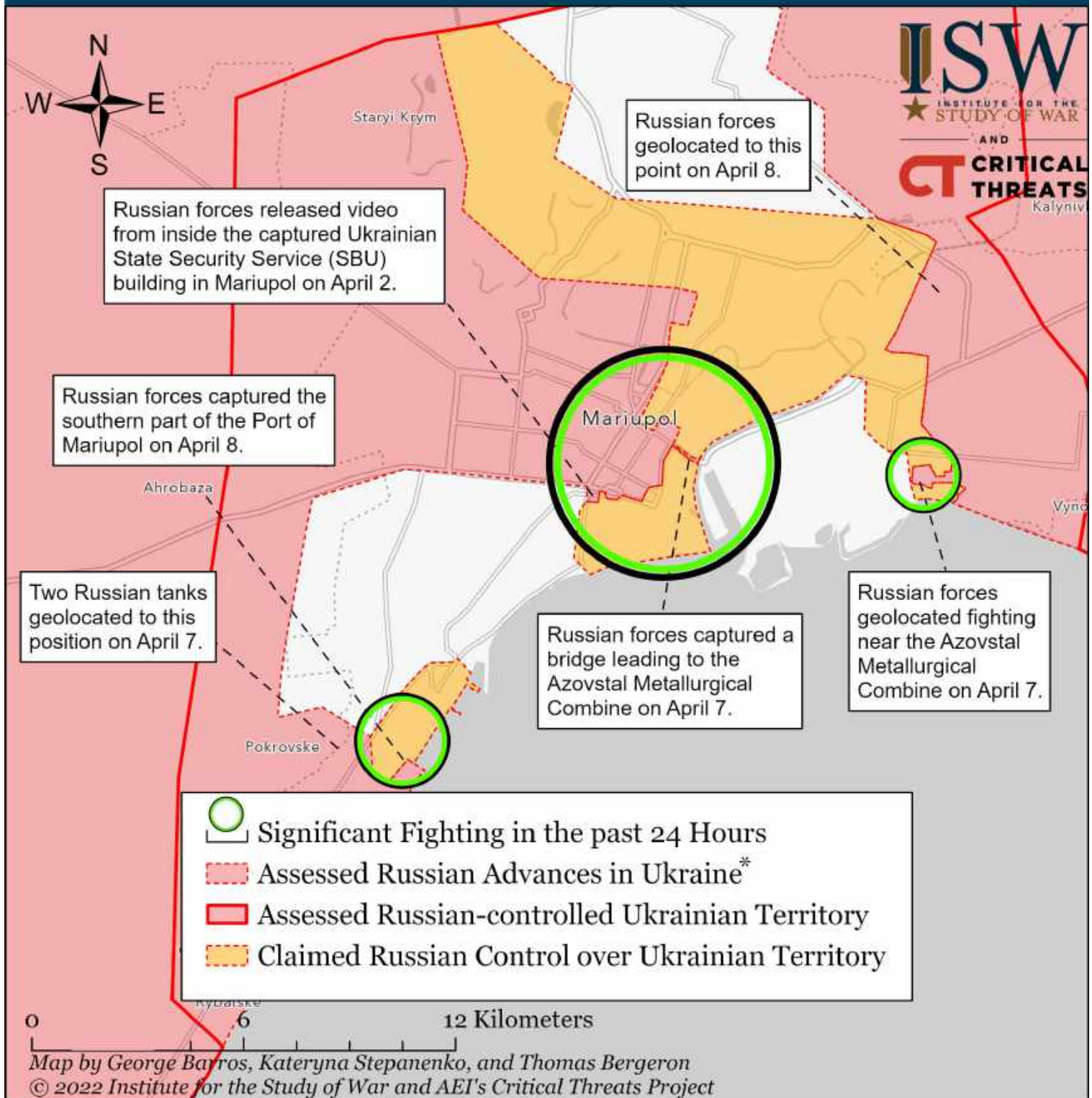
* Assessed Russian advances are areas where ISW assesses Russian forces have operated in or launched attacks against but do not control.

Assessed Control of Terrain Around Luhansk as of April 07, 2022, 3:00 ET



* Assessed Russian advances are areas where ISW assesses Russian forces have operated in or launched attacks against but do not control.

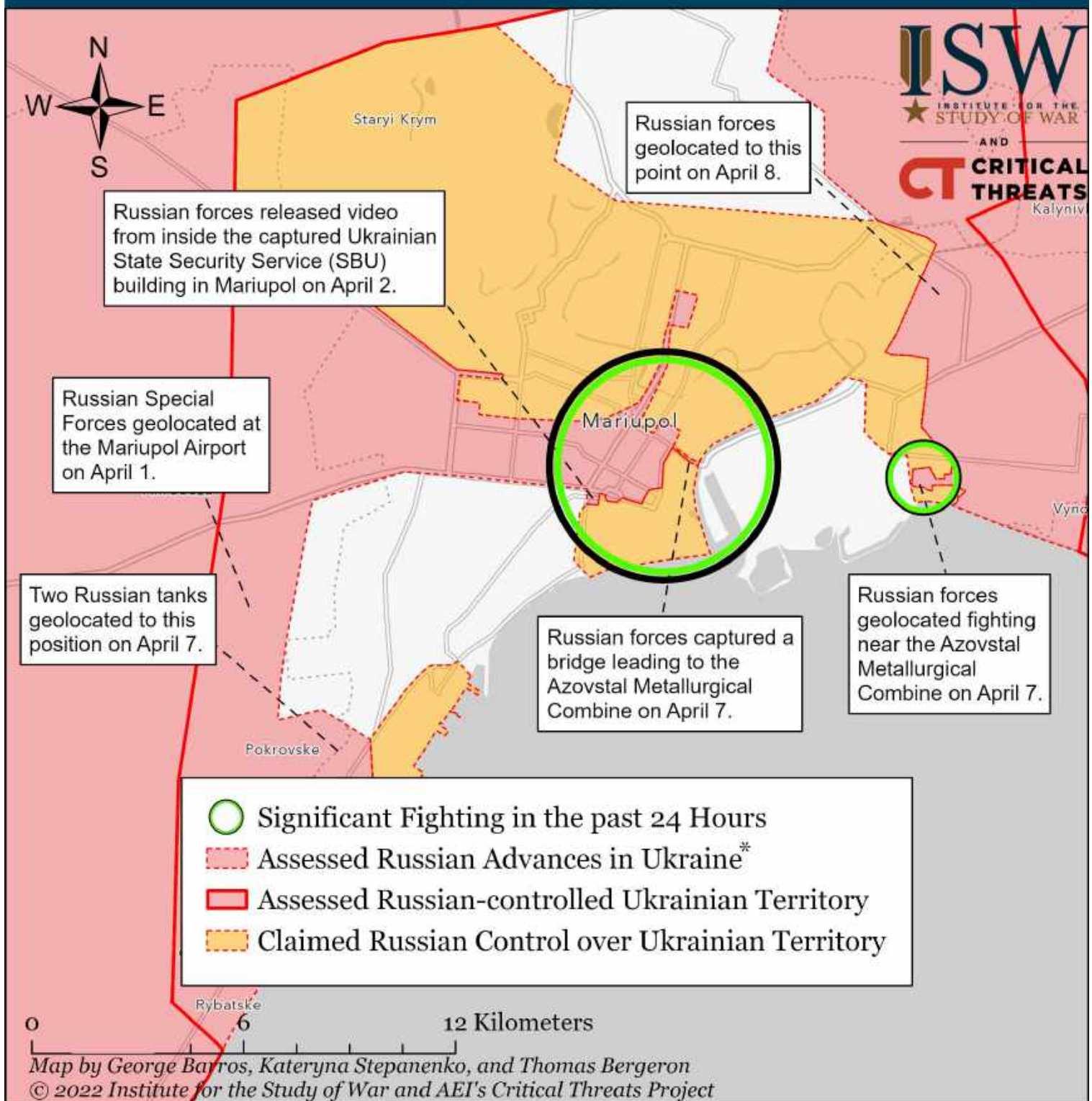
Assessed Control of Terrain Around Mariupol as of April 09, 2022, 3:00 ET



Russian forces continue their grinding advance into Mariupol, which they have encircled and are bombarding. Fighting is proceeding block-by-block and slowly. Russian forces began penetrating Mariupol's city center on March 24. The Donetsk People's Republic claimed on April 7 that Ukrainian forces retreated from residential areas to the Azovstal Metallurgical Combine. Russian forces attempted to attack Azovstal from central and northern Mariupol on April 7 and 8. Russian forces captured the southern part of the Port of Mariupol on April 8.

* Assessed Russian advances are areas where ISW assesses Russian forces have operated in or launched attacks against but do not control.

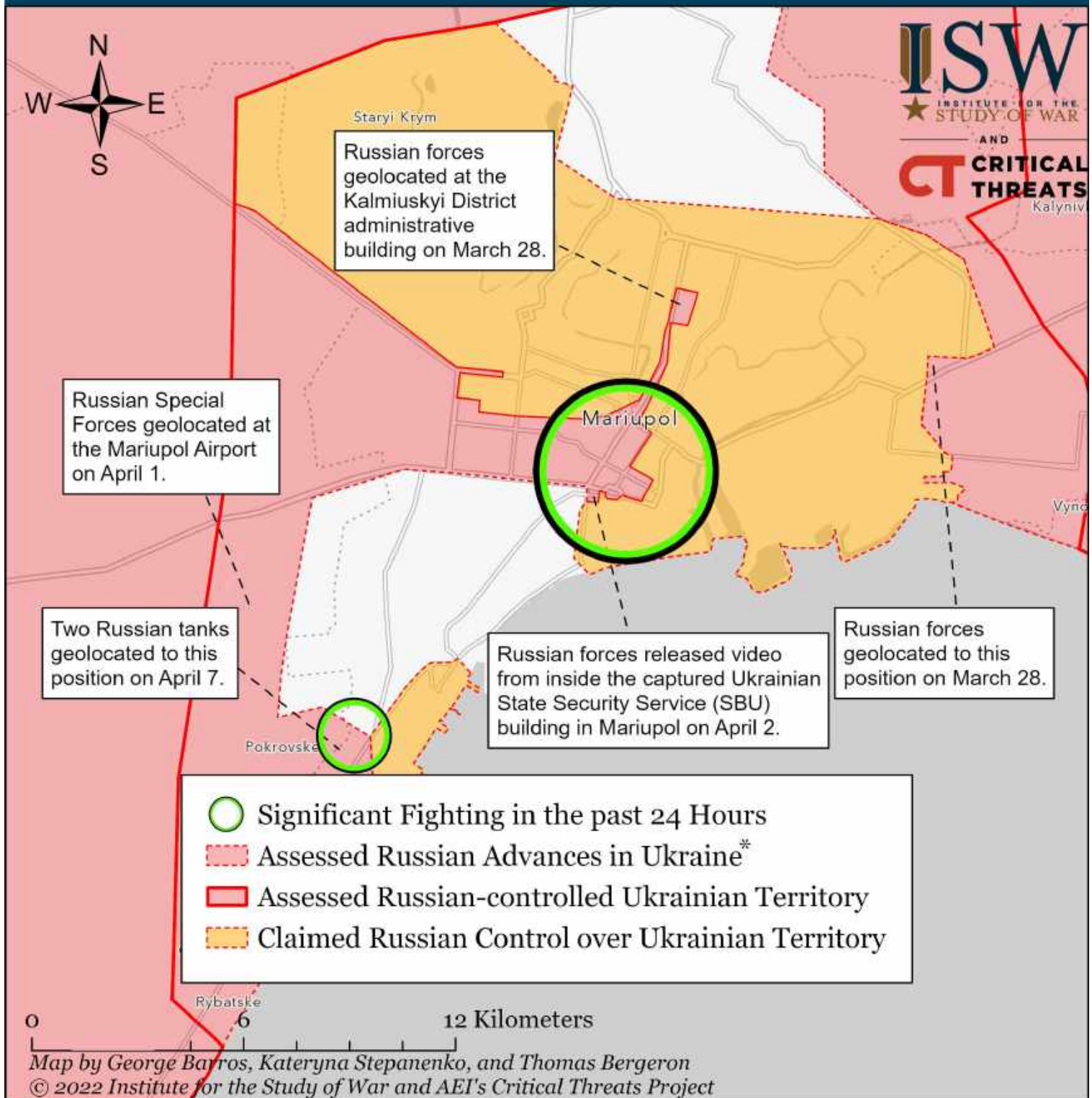
Assessed Control of Terrain Around Mariupol as of April 08, 2022, 3:00 ET



Russian forces continue their grinding advance into Mariupol, which they have encircled and are bombarding. Fighting is proceeding block-by-block and slowly. Russian forces began penetrating Mariupol's city center on March 24. The Donetsk People's Republic claimed on April 7 that Ukrainian forces retreated from residential areas to the Azovstal Metallurgical Combine. Russian forces attempted to attack Azovstal from central and northern Mariupol on April 7 and April 8.

* Assessed Russian advances are areas where ISW assesses Russian forces have operated in or launched attacks against but do not control.

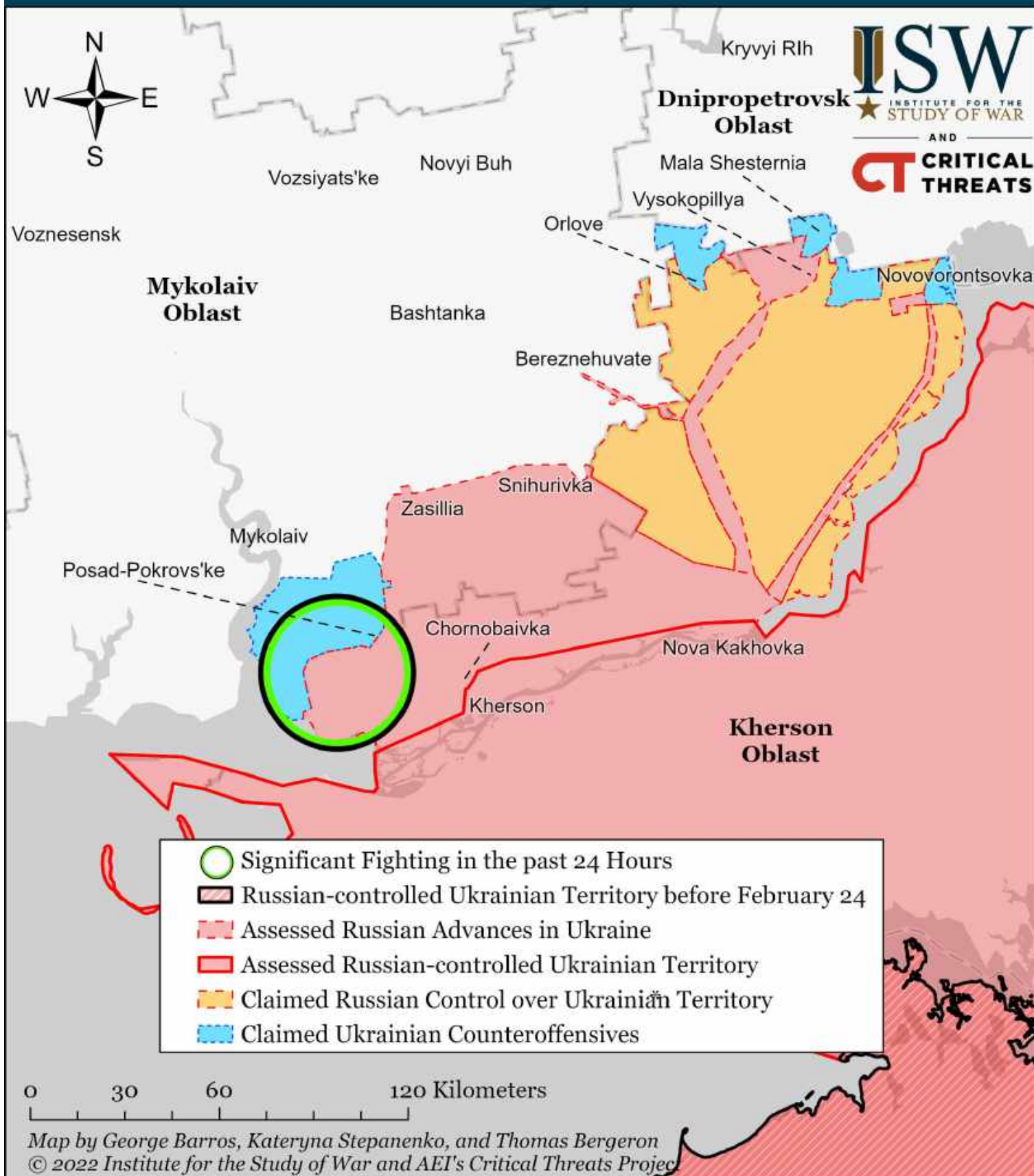
Assessed Control of Terrain Around Mariupol as of April 07, 2022, 3:00 ET



Russian forces continue their grinding advance into Mariupol, which they have encircled and are bombarding. Fighting is proceeding block-by-block and slowly. Russian forces began penetrating Mariupol's city center on March 24. Russian forces likely advanced from the southwest between April 1 and April 7, but Ukrainian forces are still operating in the area. The Donetsk People's Republic claimed on April 7 that Russian forces have captured central Mariupol and are attacking Ukrainian forces in southwest Mariupol.

* Assessed Russian advances are areas where ISW assesses Russian forces have operated in or launched attacks against but do not control.

Assessed Control of Terrain Around Kherson and Mykolaiv as of April 09, 2022, 3:00 PM ET



* Assessed Russian advances are areas where ISW assesses Russian forces have operated in or launched attacks against but do not control.