

# Assessed Control of Terrain in Ukraine and Main Russian Maneuver Axes as of April 12, 2022, 3:00 PM ET



Map by George Barros, Kateryna Stepanenko, and Thomas Bergeron  
© 2022 Institute for the Study of War and AEI's Critical Threats Project

\* Assessed Russian advances are areas where ISW assesses Russian forces have operated in or launched attacks against but do not control.

# Assessed Control of Terrain in Ukraine and Main Russian Maneuver Axes as of April 11, 2022, 3:00 PM ET



Map by George Barros, Kateryna Stepanenko, and Thomas Bergeron  
© 2022 Institute for the Study of War and AEI's Critical Threats Project

\* Assessed Russian advances are areas where ISW assesses Russian forces have operated in or launched attacks against but do not control.



# Assessed Control of Terrain in Ukraine and Main Russian Maneuver Axes as of April 10, 2022, 3:00 PM ET

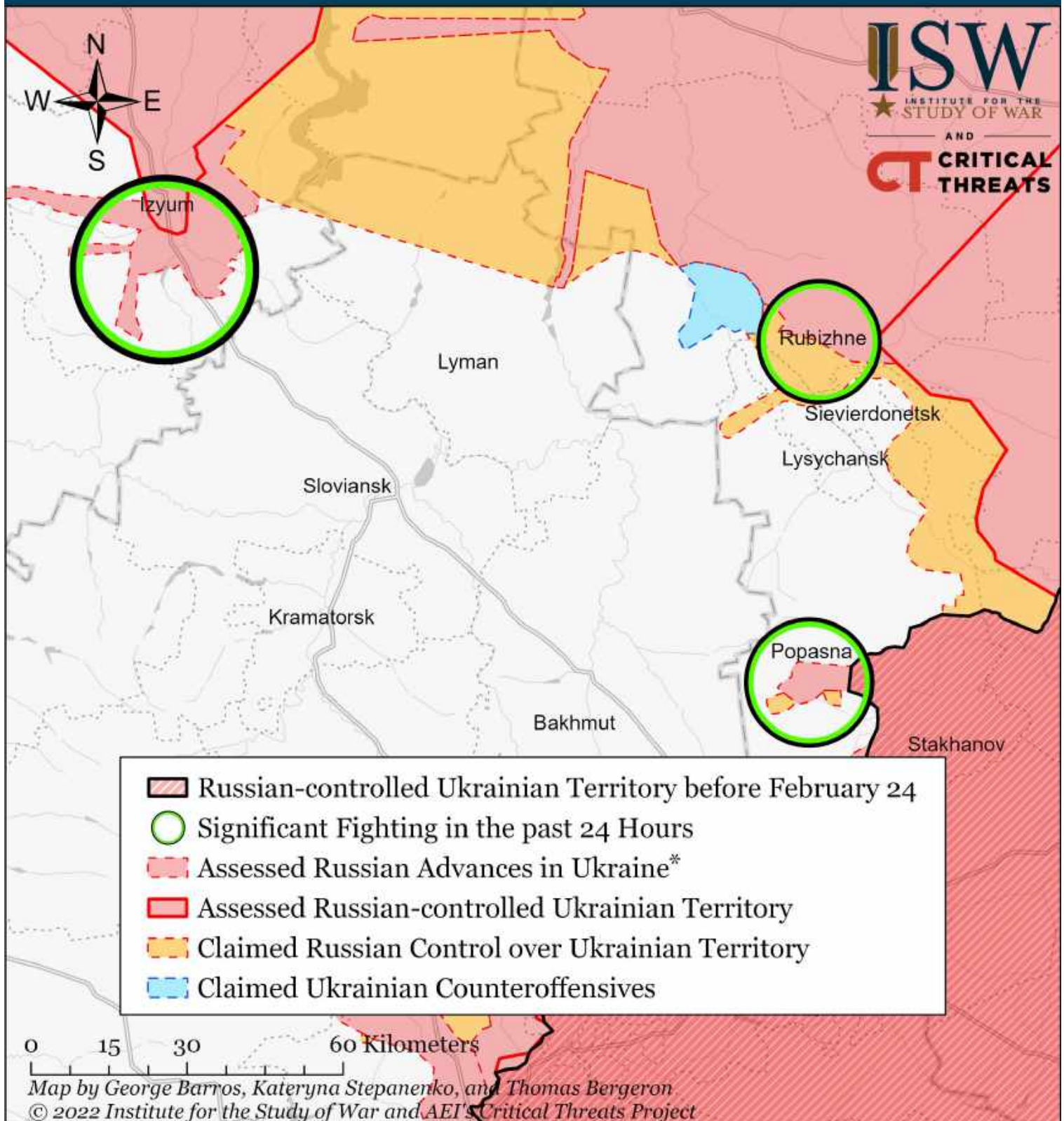


Map by George Barros, Kateryna Stepanenko, and Thomas Bergeron  
© 2022 Institute for the Study of War and AEI's Critical Threats Project

\* Assessed Russian advances are areas where ISW assesses Russian forces have operated in or launched attacks against but do not control.



# Assessed Control of Terrain Around Luhansk as of April 12, 2022, 3:00 ET

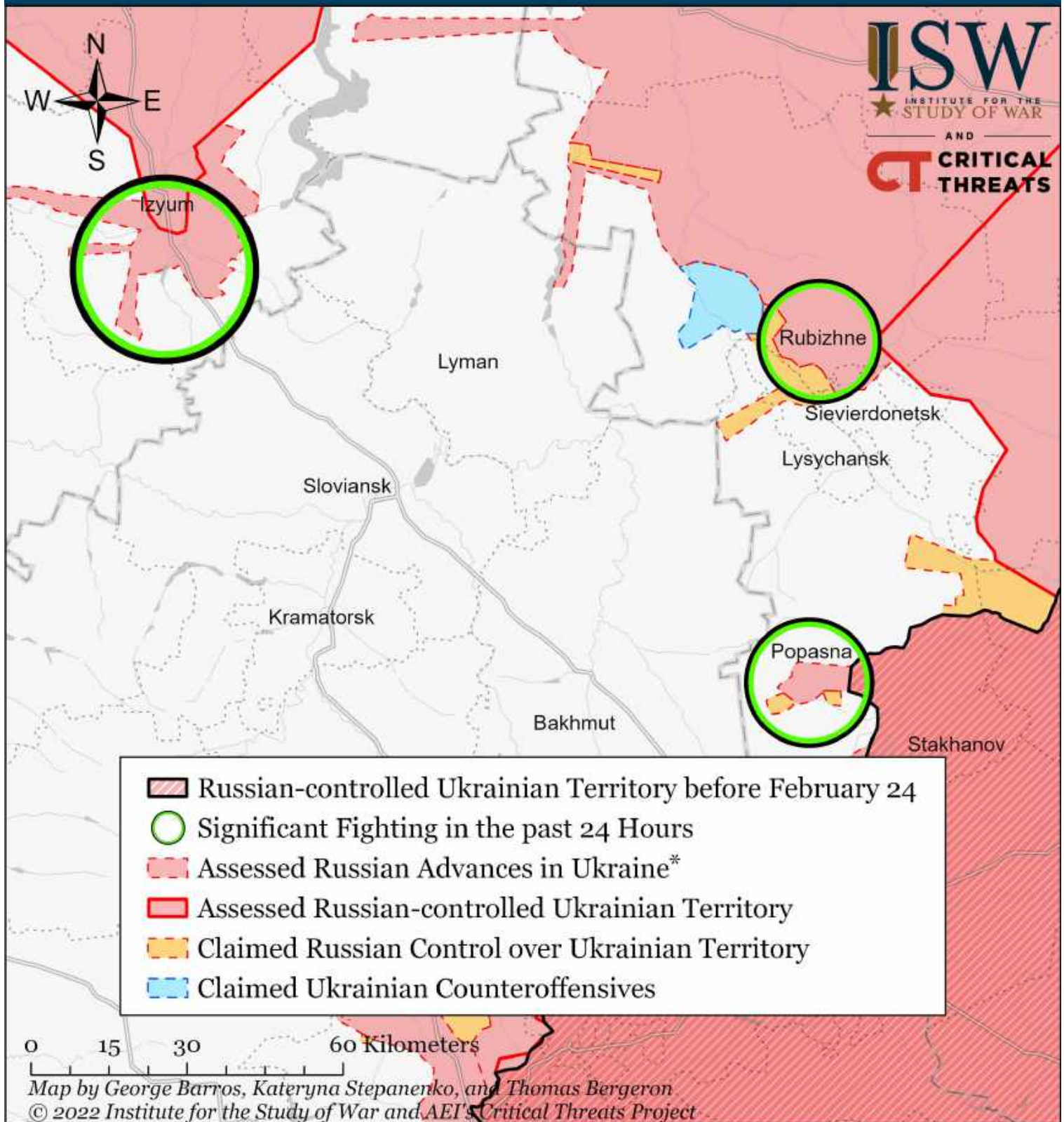


\* Assessed Russian advances are areas where ISW assesses Russian forces have operated in or launched attacks against but do not control.

Note: We revised Russian assessed advance near Rubizhne due to observing new geolocation data for Russian forces and reconciling it with an April 10 interview from Luhansk Oblast Governor Serhei Haidai in which he stated that Russian forces occupy half of Rubizhne and that street fighting in Rubizhne is ongoing. We recoded Russian-claimed control near Izyum, Rubizhne, and Sievierdonetsk due to Russian claims in a new map from Kremlin news outlet RIA Fan from April 12.



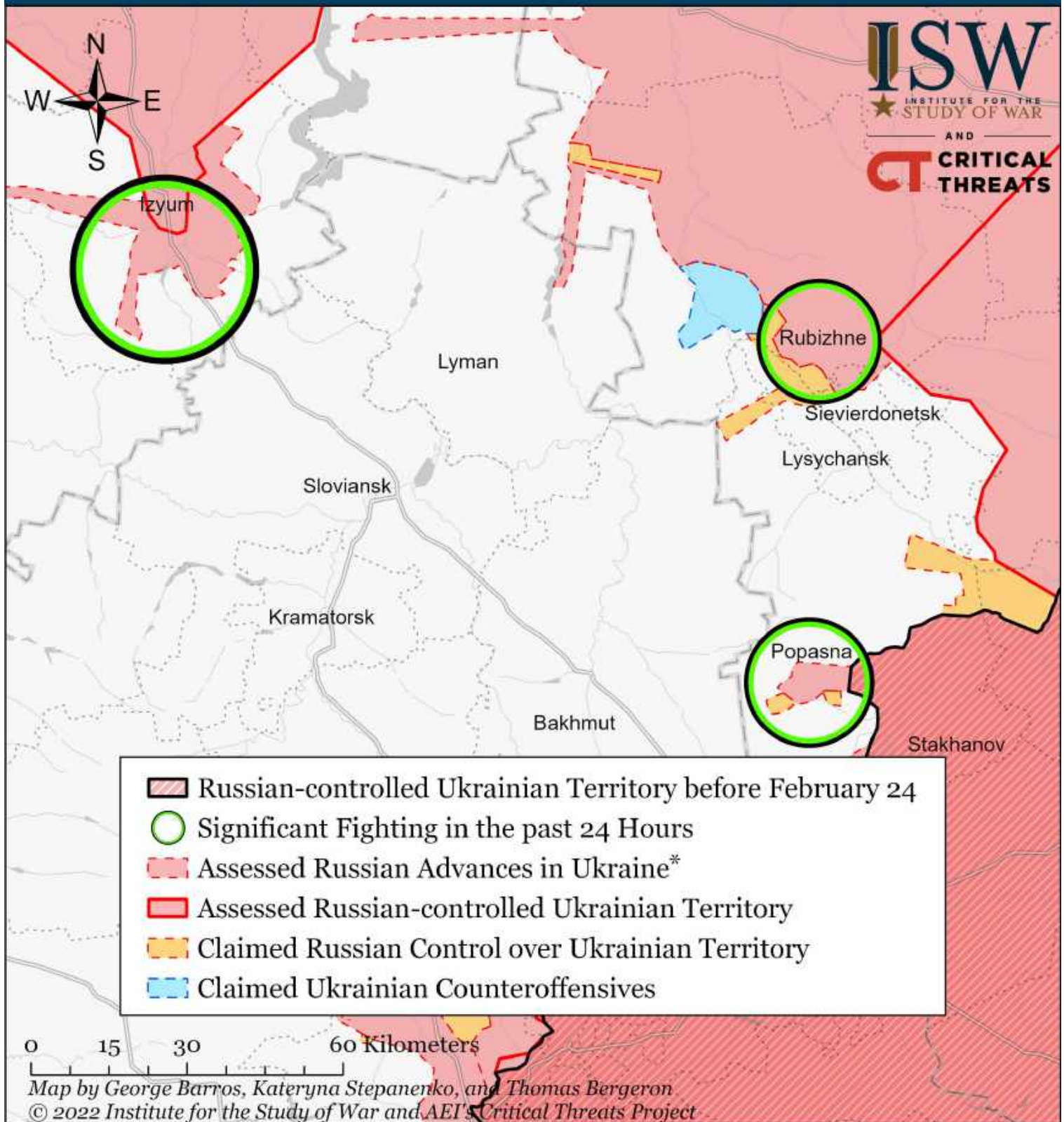
# Assessed Control of Terrain Around Luhansk as of April 11, 2022, 3:00 ET



\* Assessed Russian advances are areas where ISW assesses Russian forces have operated in or launched attacks against but do not control.



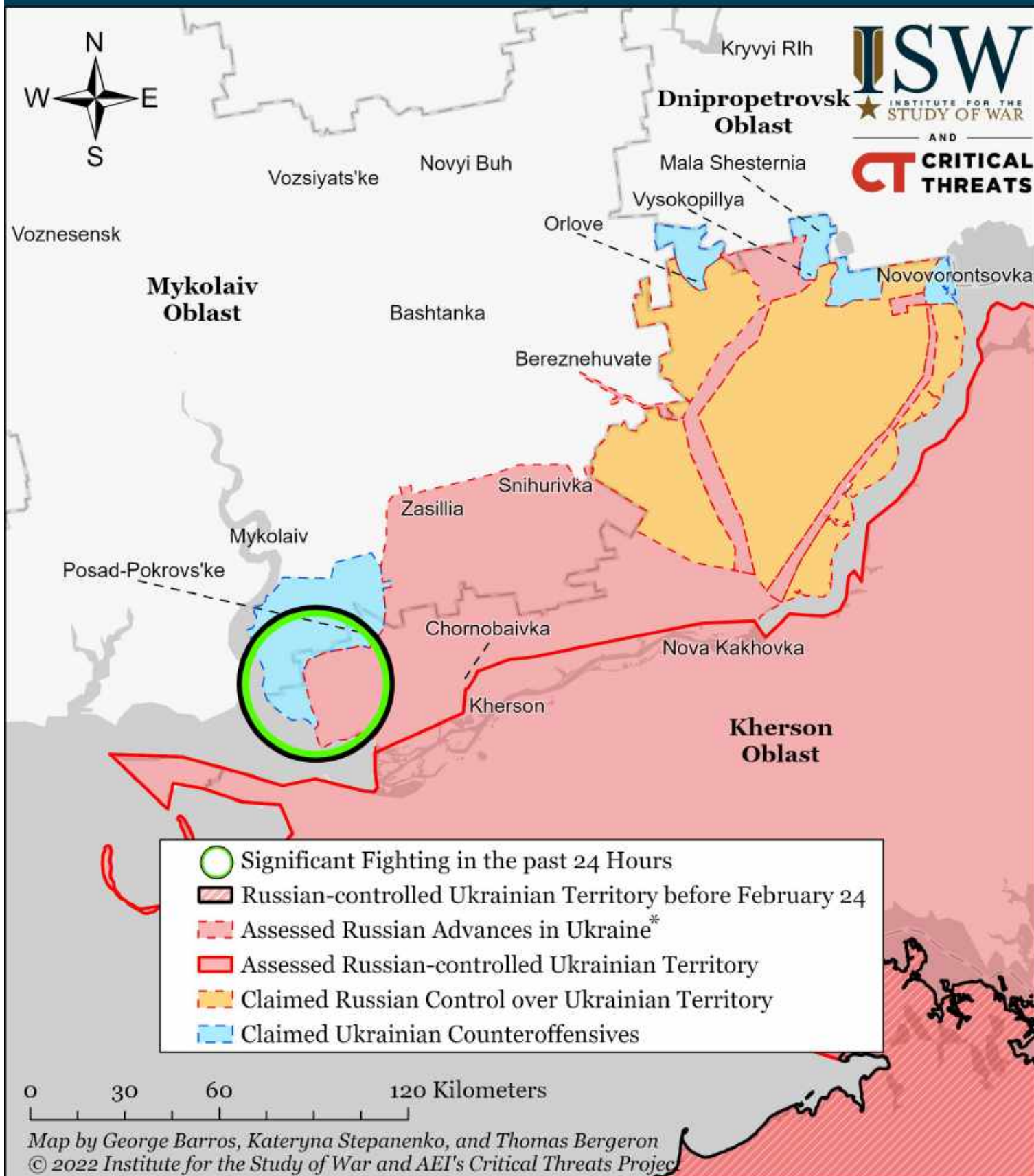
# Assessed Control of Terrain Around Luhansk as of April 10, 2022, 3:00 ET



\* Assessed Russian advances are areas where ISW assesses Russian forces have operated in or launched attacks against but do not control.

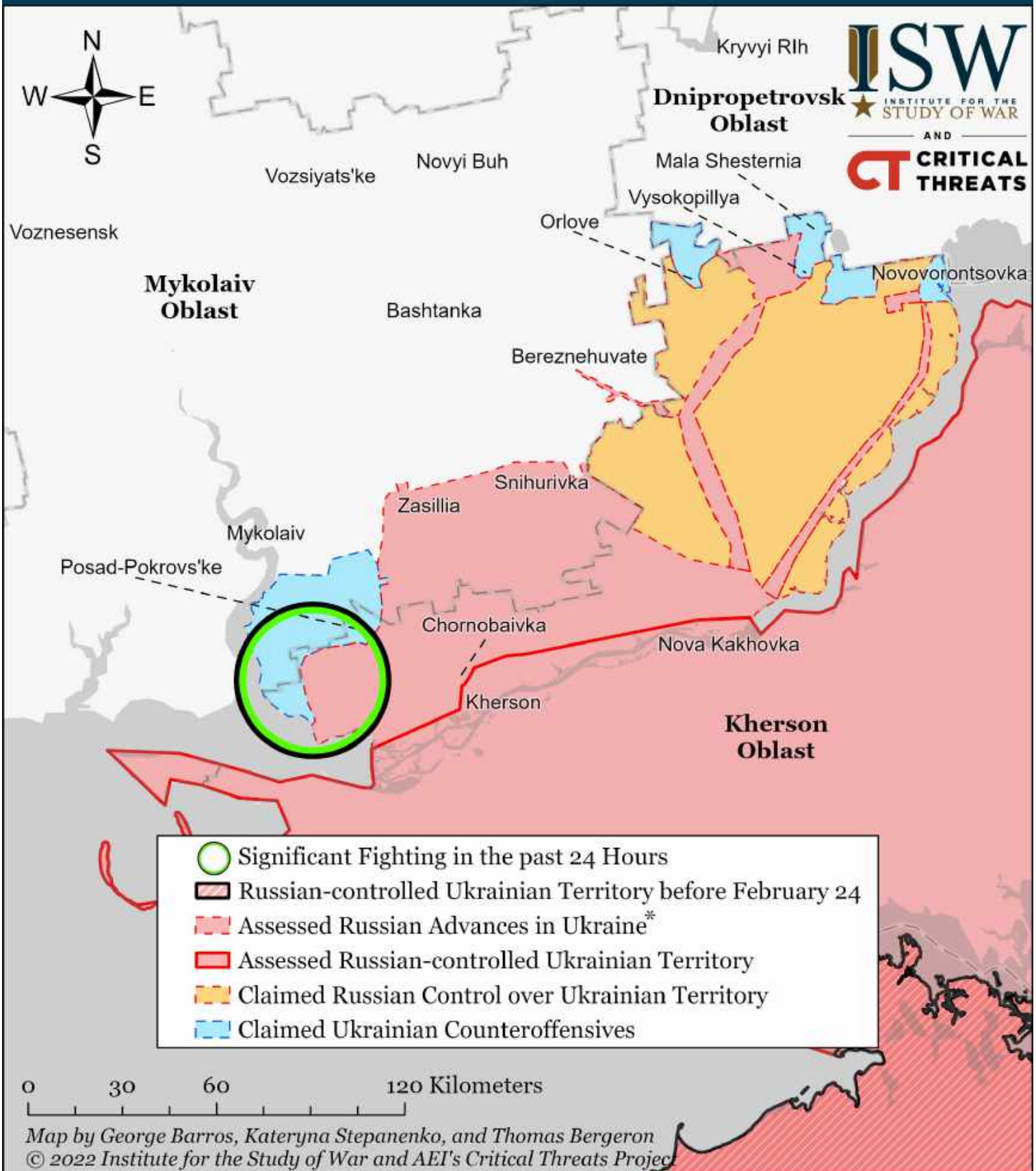


# Assessed Control of Terrain Around Kherson and Mykolaiv as of April 12, 2022, 3:00 PM ET



\* Assessed Russian advances are areas where ISW assesses Russian forces have operated in or launched attacks against but do not control.

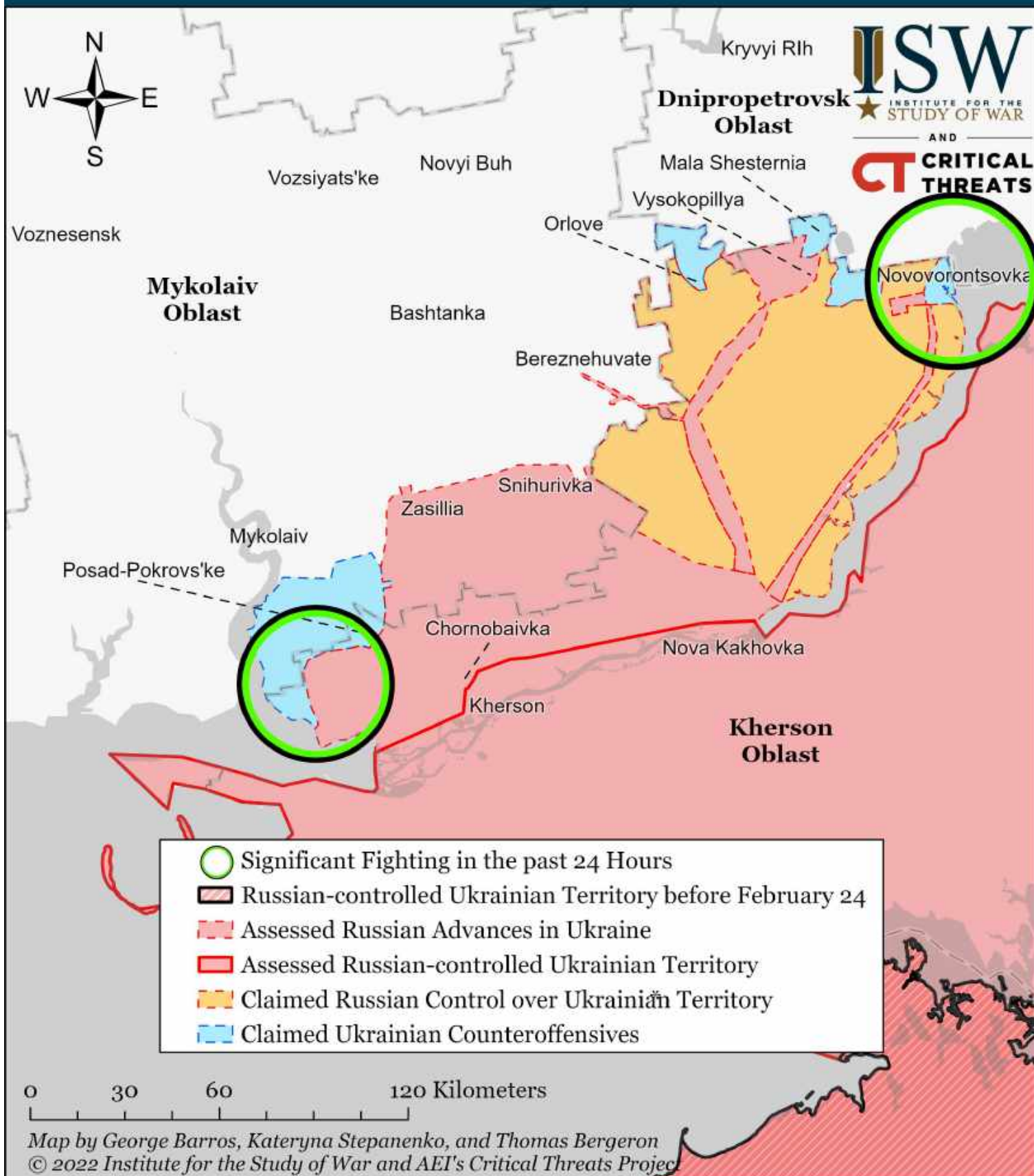
# Assessed Control of Terrain Around Kherson and Mykolaiv as of April 11, 2022, 3:00 PM ET



\* Assessed Russian advances are areas where ISW assesses Russian forces have operated in or launched attacks against but do not control.



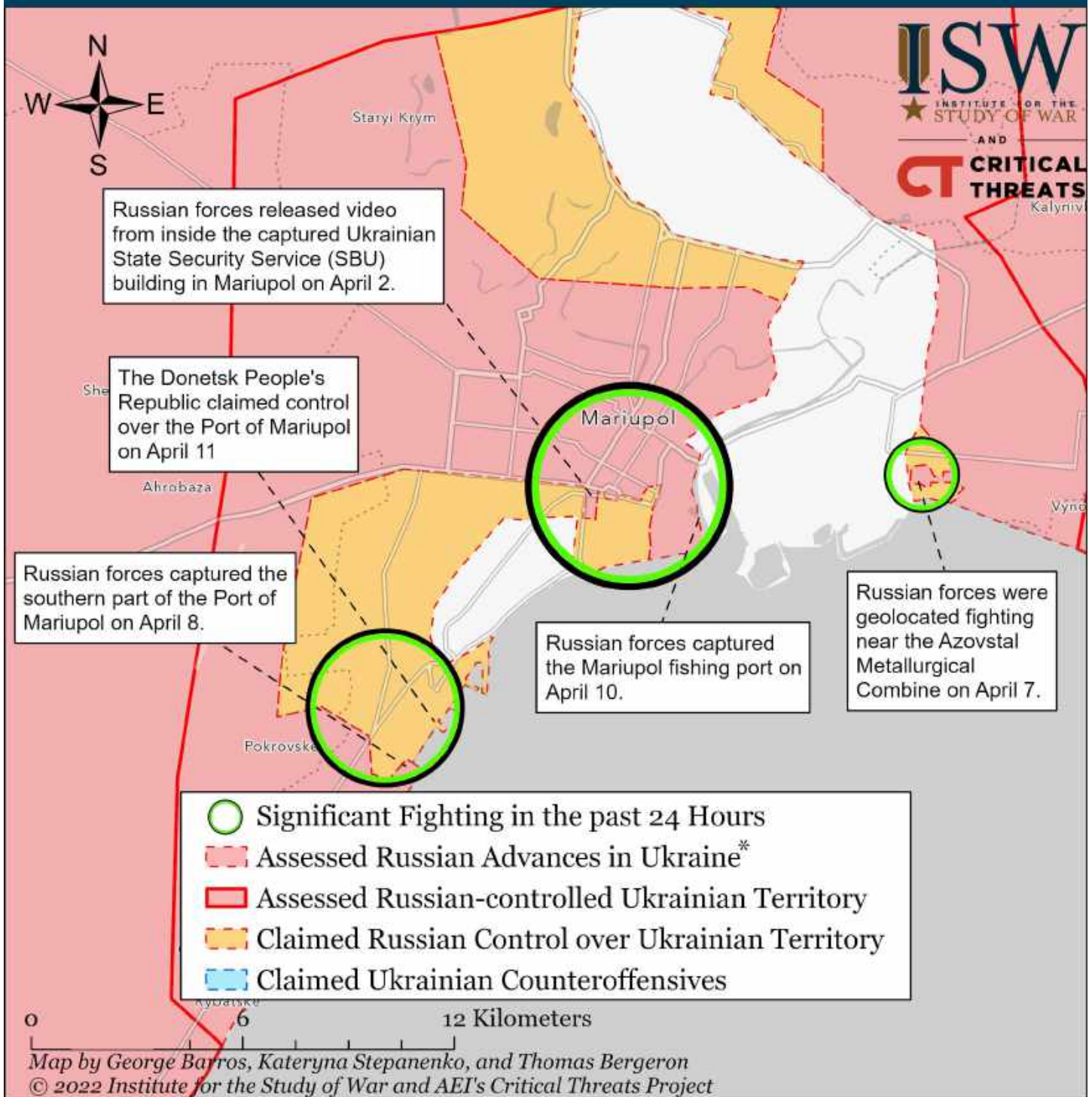
# Assessed Control of Terrain Around Kherson and Mykolaiv as of April 10, 2022, 3:00 PM ET



\* Assessed Russian advances are areas where ISW assesses Russian forces have operated in or launched attacks against but do not control.



# Assessed Control of Terrain Around Mariupol as of April 12, 2022, 3:00 ET

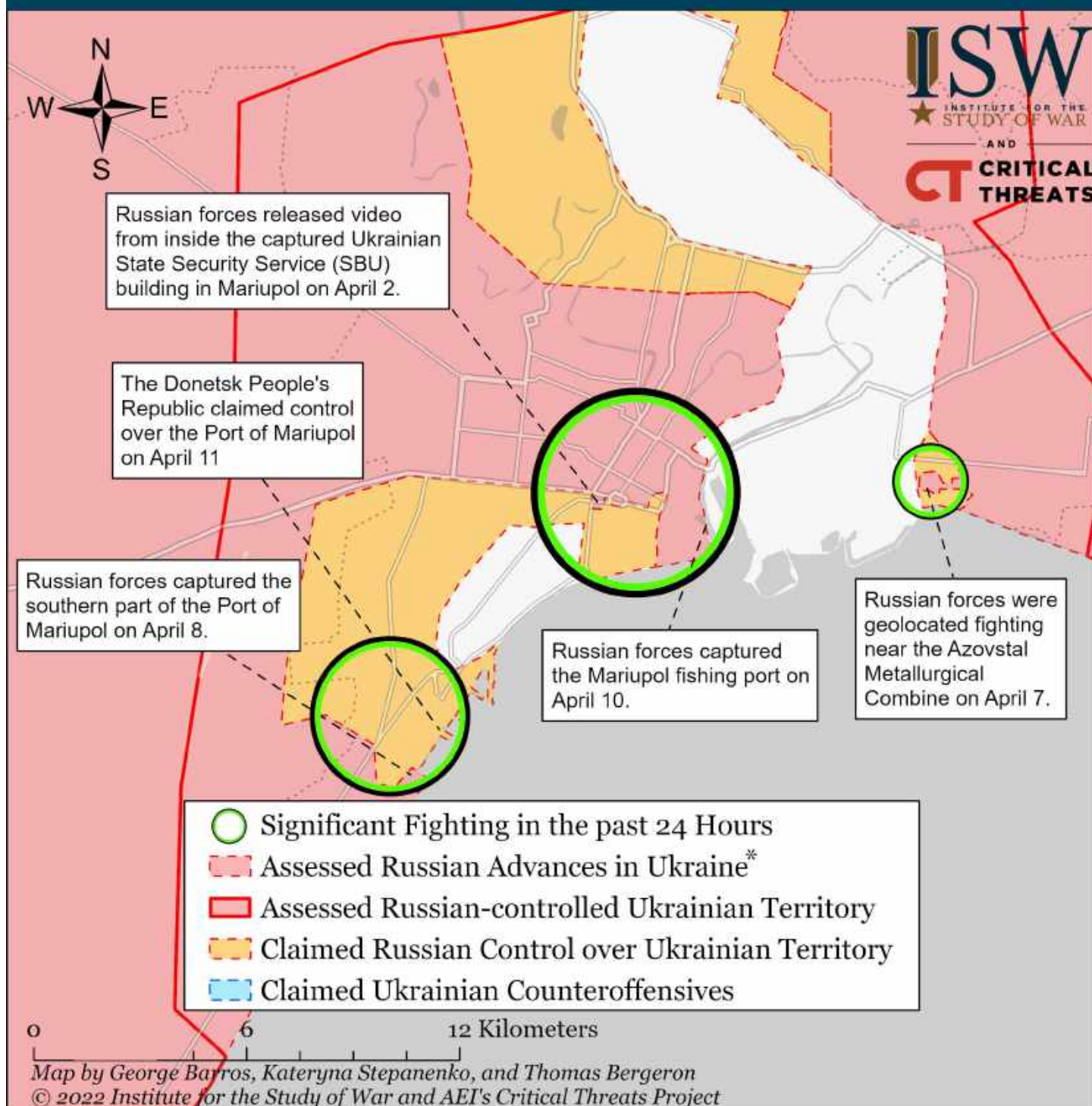


Russian forces continue their grinding advance into Mariupol, which they have encircled and are bombarding. Fighting is proceeding block-by-block and slowly. Russian forces began penetrating Mariupol's city center on March 24. The Donetsk People's Republic claimed on April 7 that Ukrainian forces retreated from residential areas to the Azovstal Metallurgical Combine. Russian forces captured the Mariupol fishing port near Azovstal on April 10, bisecting the remaining Ukrainian-controlled areas of the city. Ukrainian forces in Mariupol began publicly discussing ammunition and food supply issues on April 12. We have not observed sufficient data to significantly change our Mariupol map between April 11 and 12 though, Russian forces have likely advanced.

\* Assessed Russian advances are areas where ISW assesses Russian forces have operated in or launched attacks against but do not control.



# Assessed Control of Terrain Around Mariupol as of April 11, 2022, 3:00 ET

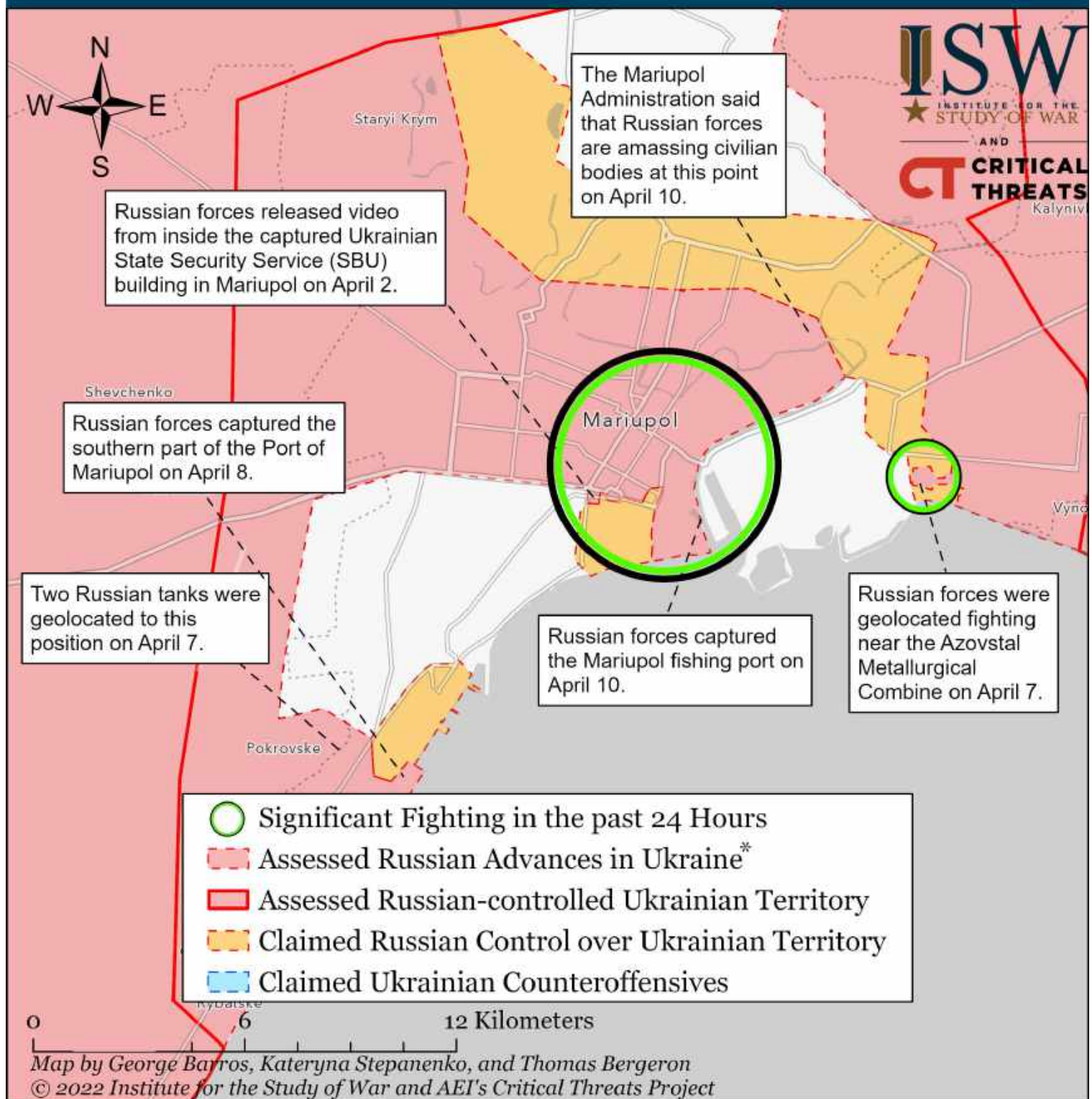


We revised our map of assessed Russian claims in Mariupol due to a new RIA Novosti map dated April 11 that shows Ukrainian forces in the Azovstal factory having an unbroken defensive position with Ukrainian forces to the north in the Azovmash factory and the Ilyich Iron and Steel Works across the Kalmius River. Various Russian actors' territorial control claims in Mariupol have contradicted each other throughout the Battle of Mariupol. RIA Novosti is a premiere Kremlin news outlet and is an authoritative source of Russian claims at this stage of the battle. ISW has not taken RIA Novosti's map at face value and overruled some of its stipulated Russian territorial control against other contradictory evidence we have observed. We will continue refining the map as we observe and verify more data.

\* Assessed Russian advances are areas where ISW assesses Russian forces have operated in or launched attacks against but do not control.



# Assessed Control of Terrain Around Mariupol as of April 10, 2022, 3:00 ET



Russian forces continue their grinding advance into Mariupol, which they have encircled and are bombarding. Fighting is proceeding block-by-block and slowly. Russian forces began penetrating Mariupol's city center on March 24. The Donetsk People's Republic claimed on April 7 that Ukrainian forces retreated from residential areas to the Azovstal Metallurgical Combine. Russian forces captured the Mariupol fishing port near Azovstal on April 10, bisecting the remaining Ukrainian-controlled areas of the city.

\* Assessed Russian advances are areas where ISW assesses Russian forces have operated in or launched attacks against but do not control.