

Assessed Control of Terrain in Ukraine and Main Russian Maneuver Axes as of April 15, 2022, 3:00 PM ET



Map by George Barros, Kateryna Stepanenko, Thomas Bergeron, and Brian Carter
© 2022 Institute for the Study of War and AEI's Critical Threats Project

* Assessed Russian advances are areas where ISW assesses Russian forces have operated in or launched attacks against but do not control.

Assessed Control of Terrain in Ukraine and Main Russian Maneuver Axes as of April 14, 2022, 3:00 PM ET



Map by George Barros, Kateryna Stepanenko, Thomas Bergeron, and Ezgi Yazici
© 2022 Institute for the Study of War and AEI's Critical Threats Project

* Assessed Russian advances are areas where ISW assesses Russian forces have operated in or launched attacks against but do not control.

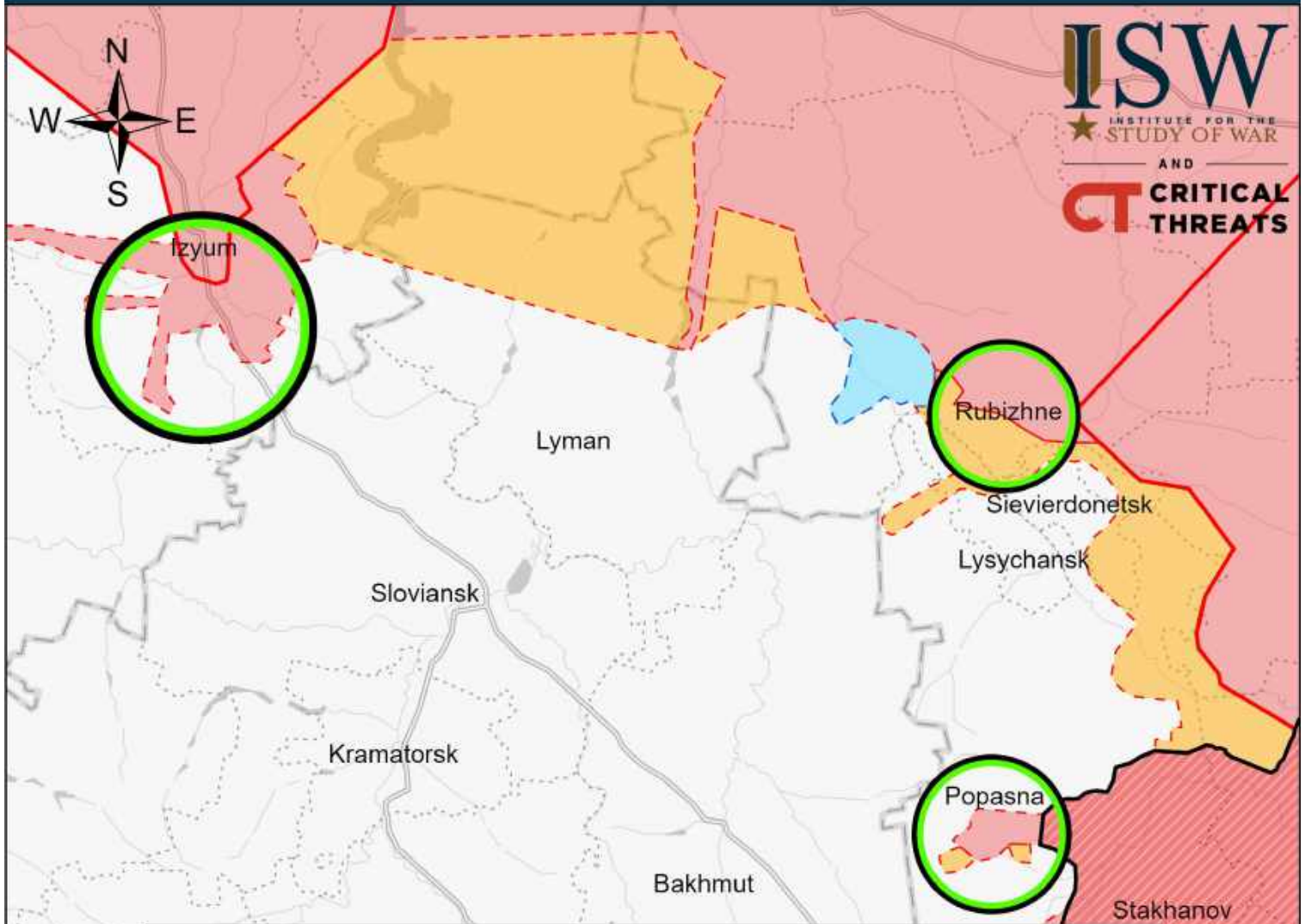
Assessed Control of Terrain in Ukraine and Main Russian Maneuver Axes as of April 13, 2022, 3:00 PM ET



Map by George Barros, Kateryna Stepanenko, and Thomas Bergeron
© 2022 Institute for the Study of War and AEI's Critical Threats Project

* Assessed Russian advances are areas where ISW assesses Russian forces have operated in or launched attacks against but do not control.

Assessed Control of Terrain Around Luhansk as of April 15, 2022, 3:00 ET



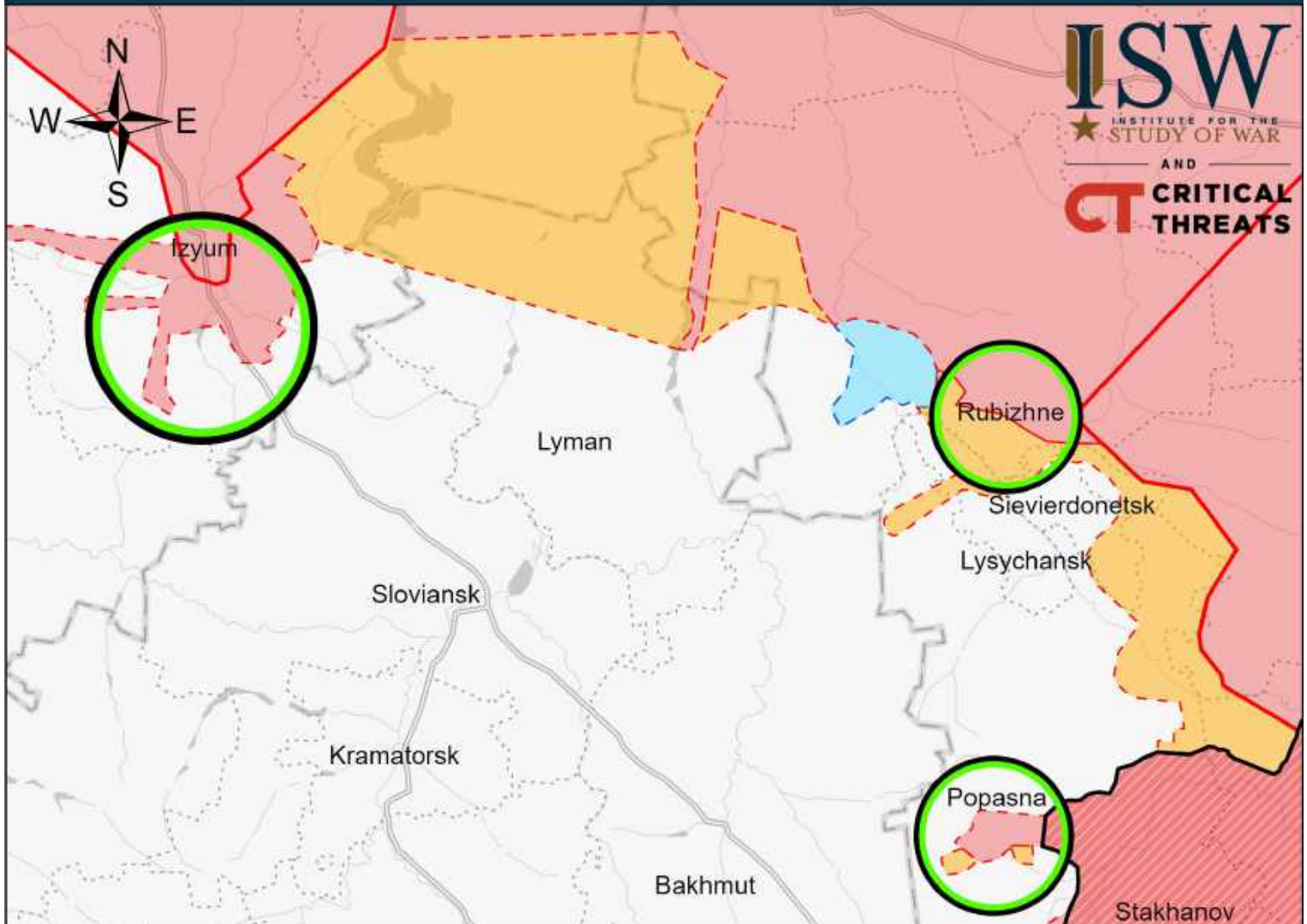
- Russian-controlled Ukrainian Territory before February 24
- Significant Fighting in the past 24 Hours
- Assessed Russian Advances in Ukraine*
- Assessed Russian-controlled Ukrainian Territory
- Claimed Russian Control over Ukrainian Territory
- Claimed Ukrainian Counteroffensives

0 15 30 60 Kilometers

Map by George Barros, Kateryna Stepanenko, Thomas Bergeron, and Brian Carter
© 2022 Institute for the Study of War and AEI's Critical Threats Project

* Assessed Russian advances are areas where ISW assesses Russian forces have operated in or launched attacks against but do not control.

Assessed Control of Terrain Around Luhansk as of April 14, 2022, 3:00 ET



ISW
INSTITUTE FOR THE
STUDY OF WAR
AND
**CRITICAL
THREATS**

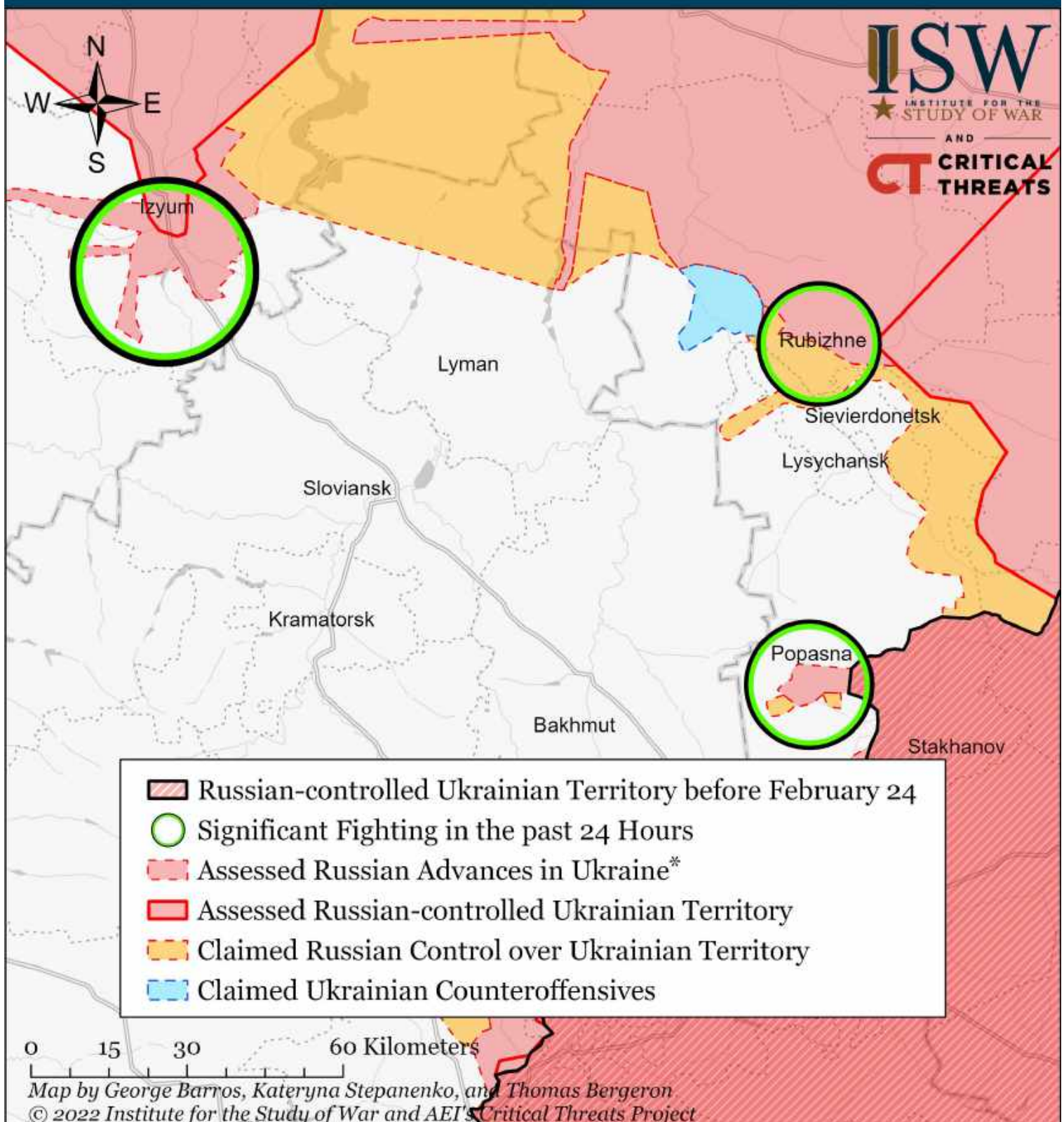
- Russian-controlled Ukrainian Territory before February 24
- Significant Fighting in the past 24 Hours
- Assessed Russian Advances in Ukraine*
- Assessed Russian-controlled Ukrainian Territory
- Claimed Russian Control over Ukrainian Territory
- Claimed Ukrainian Counteroffensives

0 15 30 60 Kilometers

Map by George Barros, Kateryna Stepanenko, Thomas Bergeron, and Ezgi Yazici
© 2022 Institute for the Study of War and AEI's Critical Threats Project

* Assessed Russian advances are areas where ISW assesses Russian forces have operated in or launched attacks against but do not control.

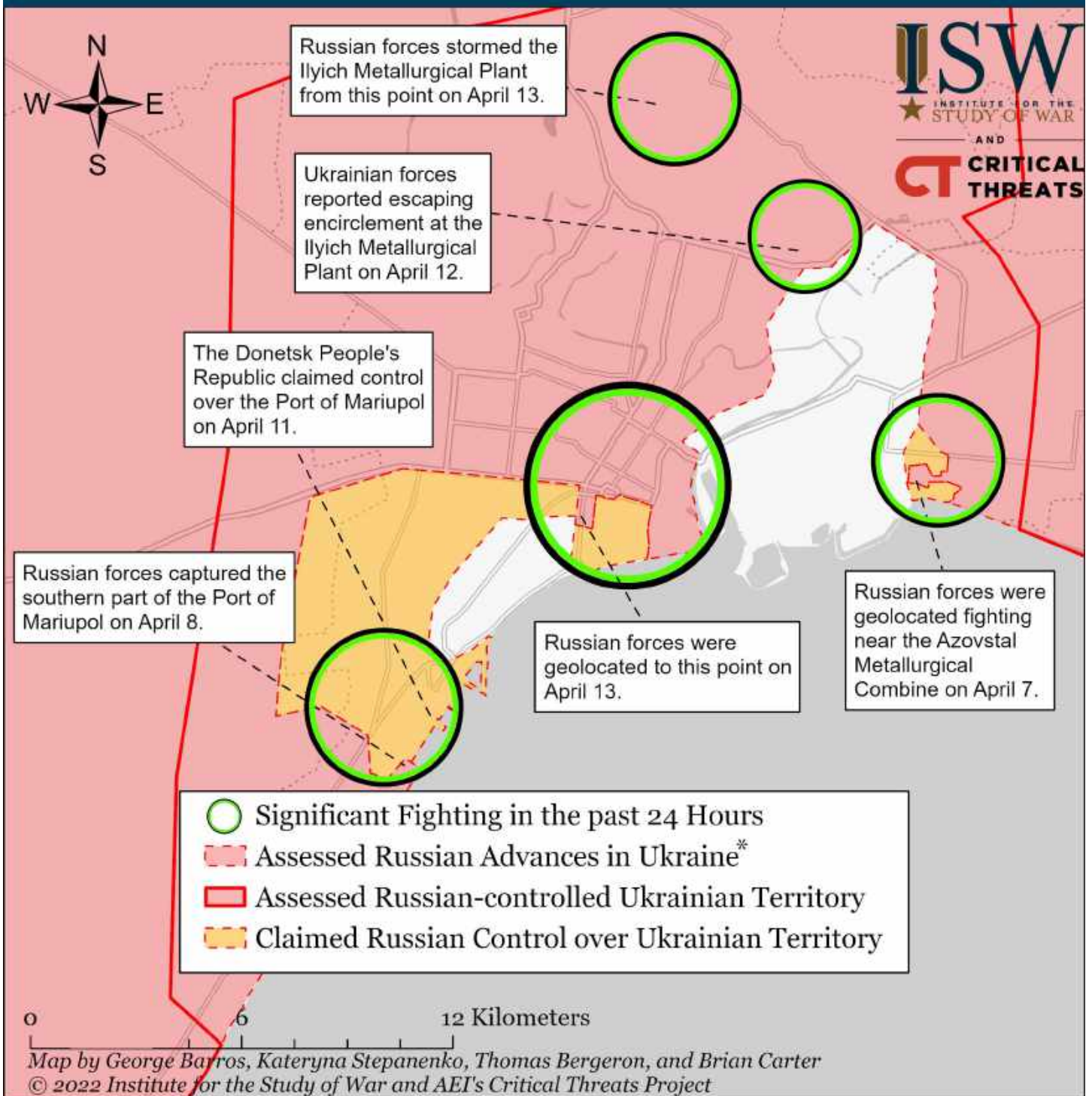
Assessed Control of Terrain Around Luhansk as of April 13, 2022, 3:00 ET



* Assessed Russian advances are areas where ISW assesses Russian forces have operated in or launched attacks against but do not control.

Note: We revised Russian assessed advance near Rubizhne due to observing new geolocation data for Russian forces and reconciling it with an April 10 interview from Luhansk Oblast Governor Serhei Haidai in which he stated that Russian forces occupy half of Rubizhne and that street fighting in Rubizhne is ongoing. We recoded Russian-claimed control near Izyum, Rubizhne, and Sievierdonetsk due to Russian claims in a new map from Kremlin news outlet RIA Fan from April 12.

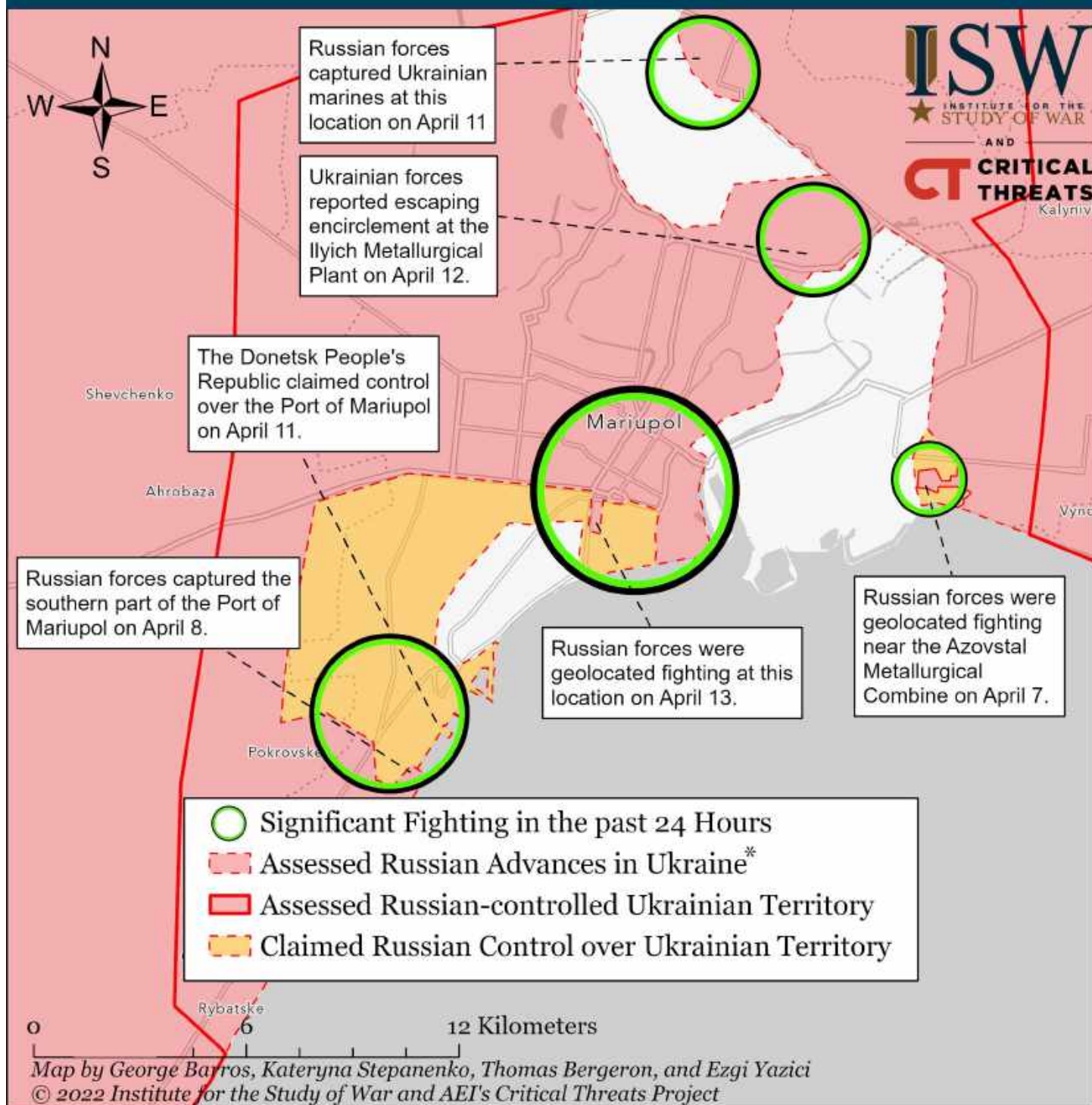
Assessed Control of Terrain Around Mariupol as of April 15, 2022, 3:00 ET



Russian forces continue their grinding advance into Mariupol, which they have encircled and are bombarding. Fighting is proceeding block-by-block and slowly. Russian forces began penetrating Mariupol's city center on March 24. Ukraine's 36th Marine Brigade reported escaping encirclement at the Ilyich Metallurgical Plant and reuniting with the Ukrainian Azov Regiment on April 12. The Russian Defense Ministry claimed that 1,026 Ukrainian servicemen surrendered at the the Ilyich Metallurgical Plant on April 13, but Ukrainian forces deny reports of mass surrender. ISW added new geolocated reports from April 13 that Russian forces stormed the Ilyich Metallurgical Plant from the northwest.

* Assessed Russian advances are areas where ISW assesses Russian forces have operated in or launched attacks against but do not control.

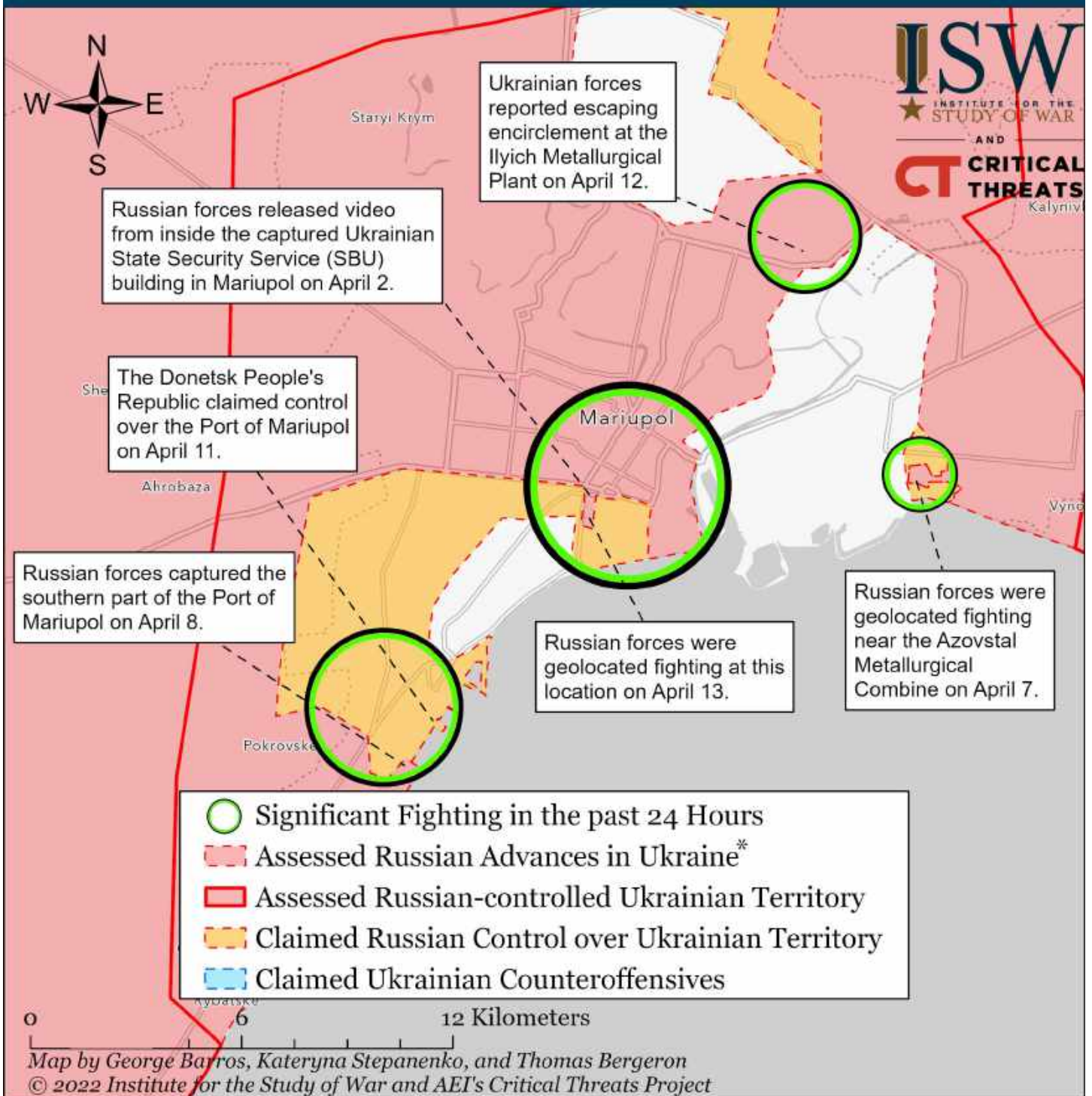
Assessed Control of Terrain Around Mariupol as of April 14, 2022, 3:00 ET



Russian forces continue their grinding advance into Mariupol, which they have encircled and are bombarding. Fighting is proceeding block-by-block and slowly. Russian forces began penetrating Mariupol's city center on March 24. Ukraine's 36th Marine Brigade reported escaping encirclement at the Ilyich Metallurgical Plant and reuniting with the Ukrainian Azov Regiment on April 12. Russian Defense Ministry claimed that 1,026 Ukrainian servicemen surrendered at the the Ilyich Metallurgical Plant on April 13, but Ukrainian forces deny reports of mass surrender. The Azov Regiment continued to challenge Russian forces in central Mariupol by destroying some Russian military equipment on April 13.

* Assessed Russian advances are areas where ISW assesses Russian forces have operated in or launched attacks against but do not control.

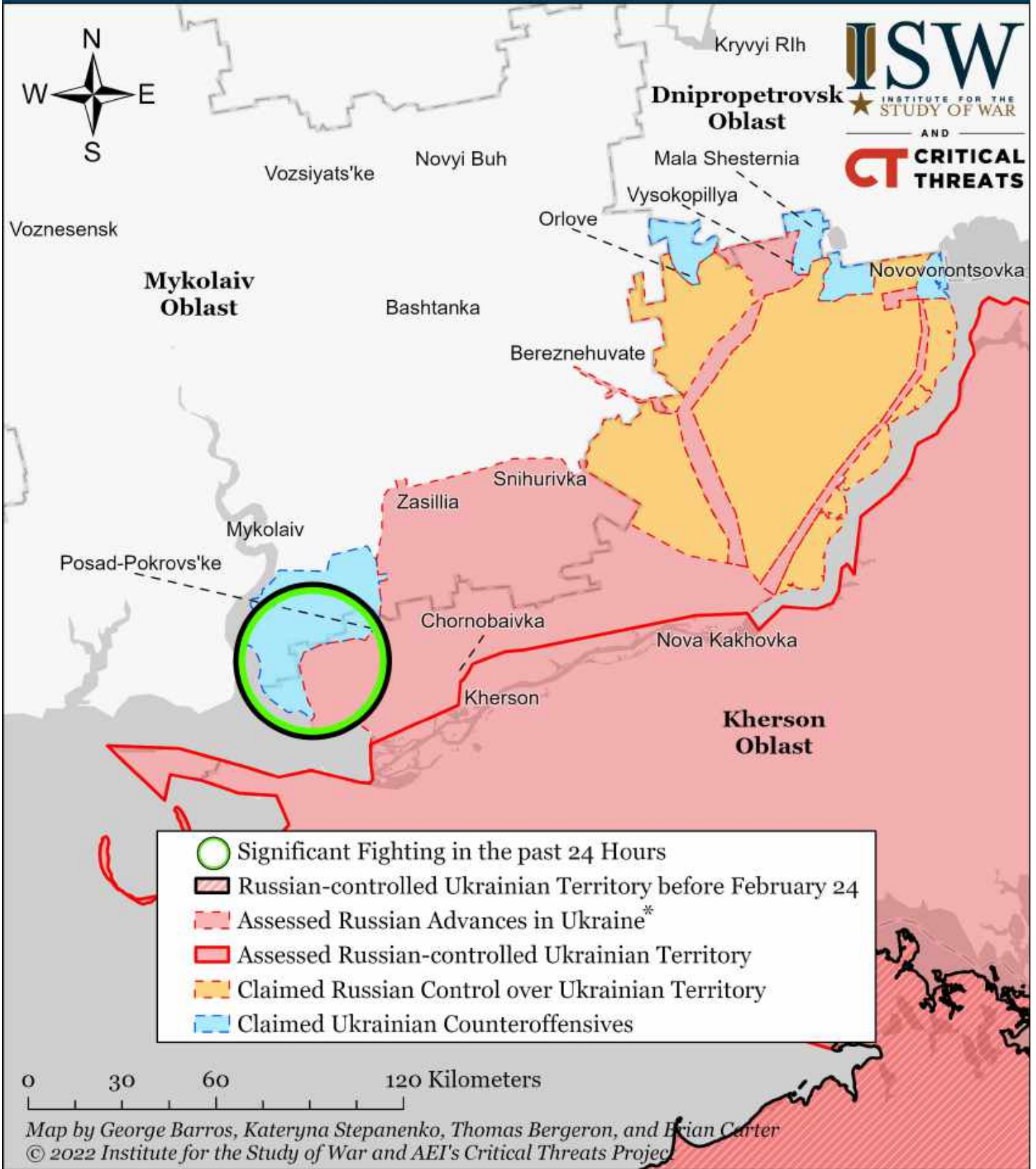
Assessed Control of Terrain Around Mariupol as of April 13, 2022, 3:00 ET



Russian forces continue their grinding advance into Mariupol, which they have encircled and are bombarding. Fighting is proceeding block-by-block and slowly. Russian forces began penetrating Mariupol's city center on March 24. Ukraine's 36th Marine Brigade reported escaping encirclement at the Ilyich Metallurgical Plant and reuniting with the Ukrainian Azov Regiment on April 12. Russian Defense Ministry claimed that 1,026 Ukrainian servicemen surrendered at the the Ilyich Metallurgical Plant on April 13, but Ukrainian forces deny reports of mass surrender. The Azov Regiment continued to challenge Russian forces in central Mariupol by destroying some Russian military equipment on April 13.

* Assessed Russian advances are areas where ISW assesses Russian forces have operated in or launched attacks against but do not control.

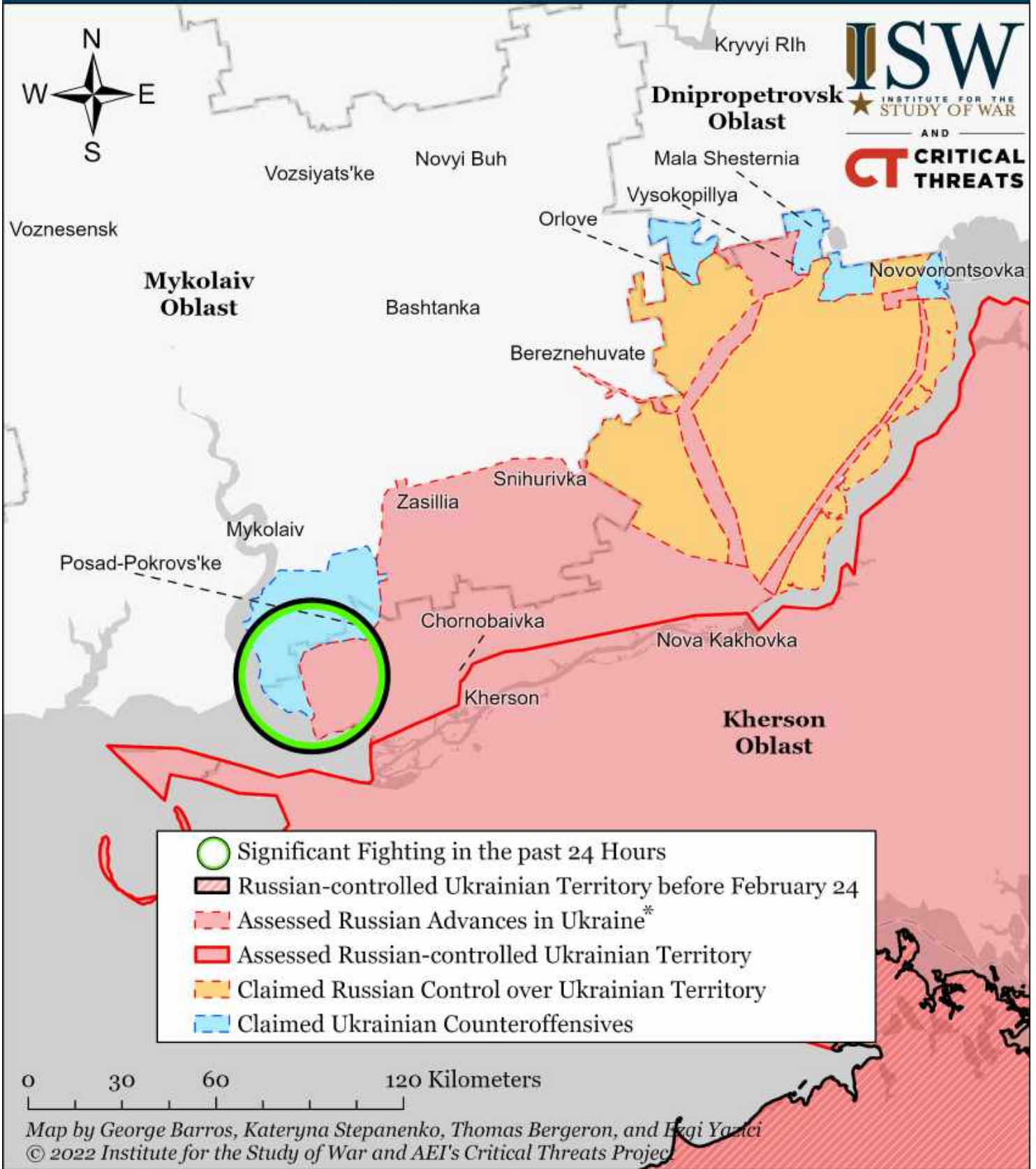
Assessed Control of Terrain Around Kherson and Mykolaiv as of April 15, 2022, 3:00 PM ET



* Assessed Russian advances are areas where ISW assesses Russian forces have operated in or launched attacks against but do not control.

Note: Ukrainian authorities claimed on April 14 that the Ukrainian 80th Airmobile Brigade (which previously operated near Mykolaiv) liberated unspecified villages in southern Ukraine, but did not name those villages for operational security reasons. We will update our maps to reflect this data when we collect more data on this claimed counterattack.

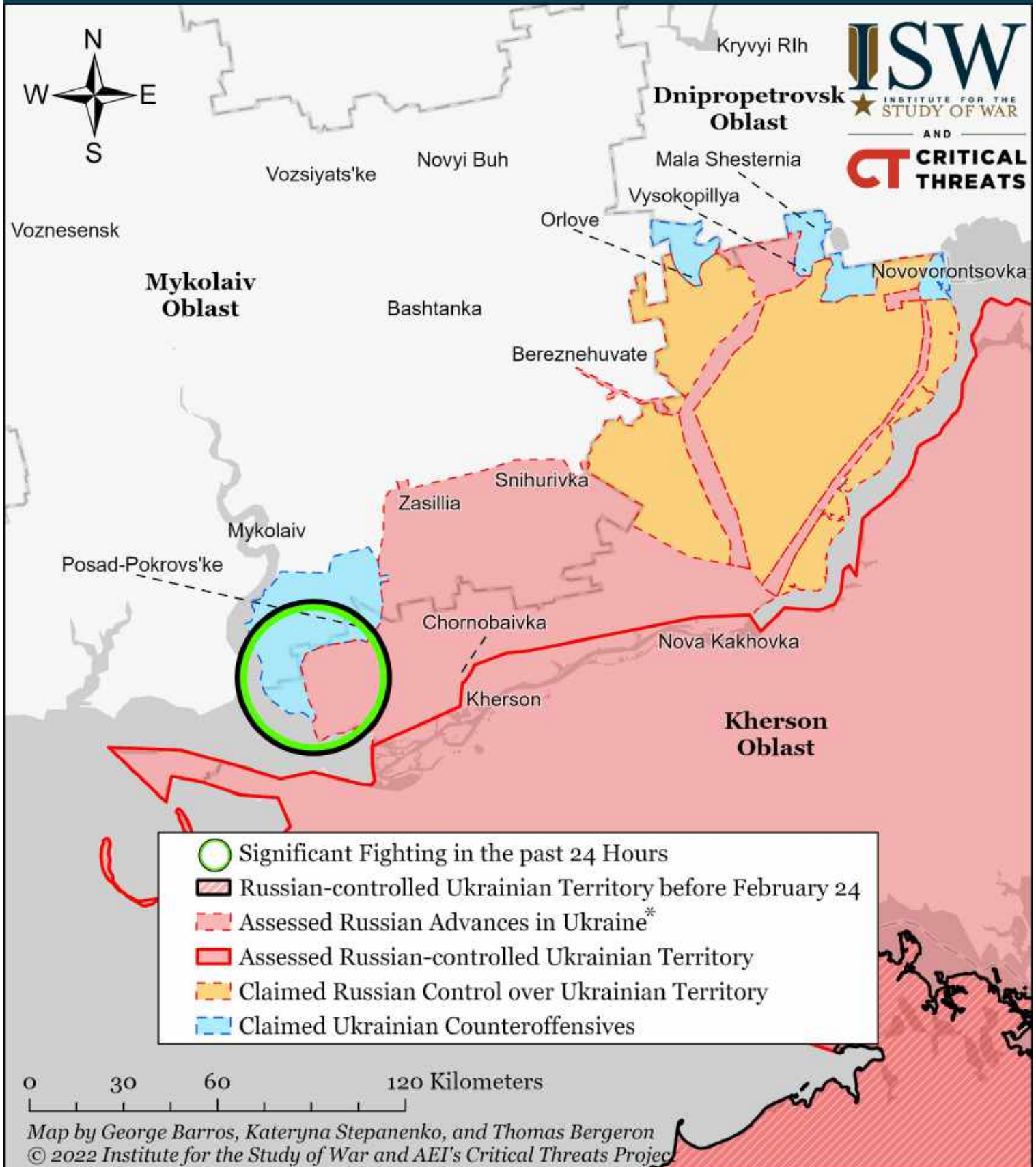
Assessed Control of Terrain Around Kherson and Mykolaiv as of April 14, 2022, 3:00 PM ET



* Assessed Russian advances are areas where ISW assesses Russian forces have operated in or launched attacks against but do not control.

Note: Ukrainian authorities claimed on April 14 that the Ukrainian 80th Airmobile Brigade (which previously operated near Mykolaiv) liberated unnamed villages in southern Ukraine and did not specify those villages for operational security reasons. We will update our maps to reflect this data when we collect more data on this claimed counterattack.

Assessed Control of Terrain Around Kherson and Mykolaiv as of April 13, 2022, 3:00 PM ET



* Assessed Russian advances are areas where ISW assesses Russian forces have operated in or launched attacks against but do not control.