

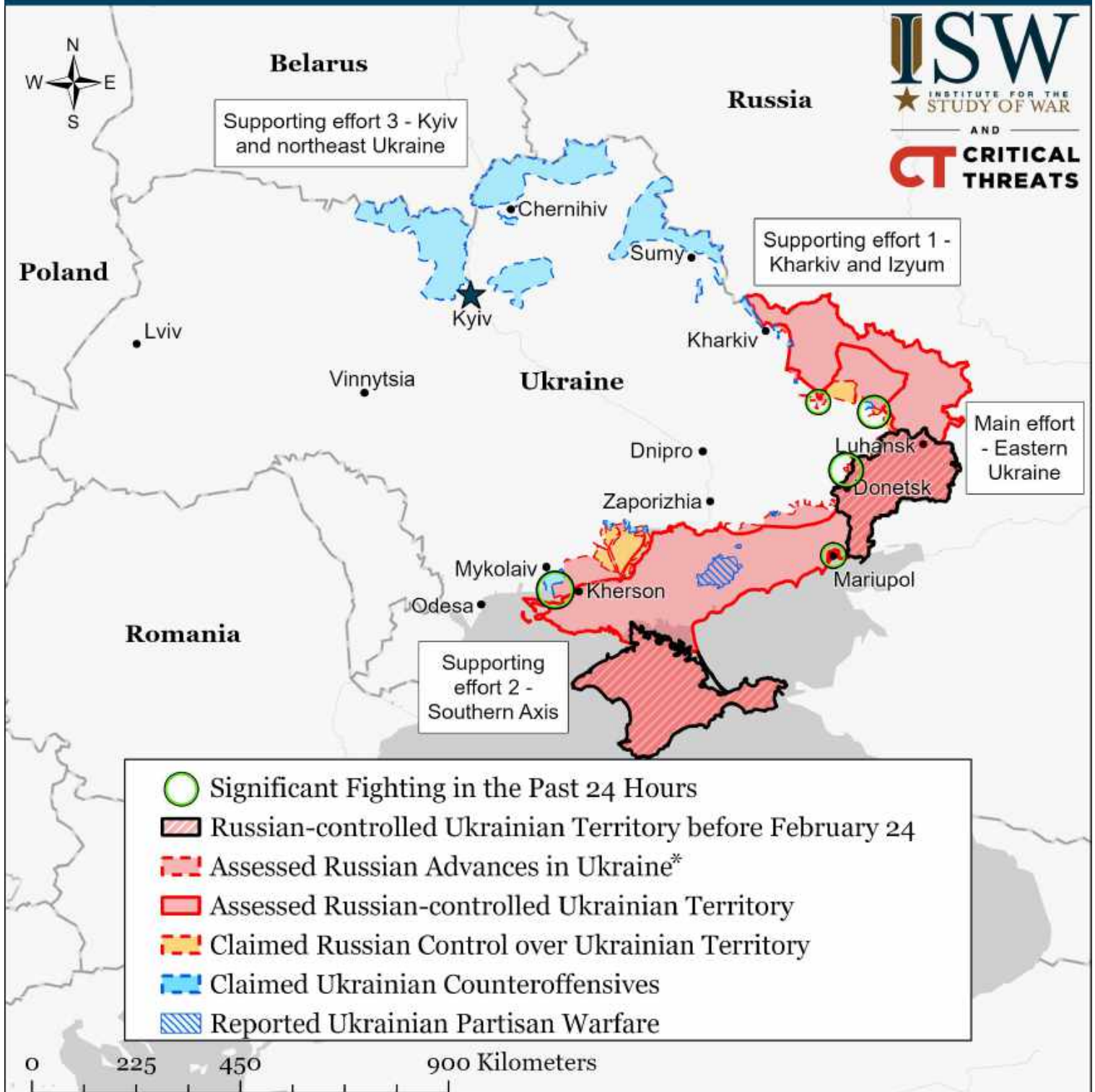
# Assessed Control of Terrain in Ukraine and Main Russian Maneuver Axes as of April 18, 2022, 3:00 PM ET



Map by George Barros, Kateryna Stepanenko, Thomas Bergeron, and Ezgi Yazici  
© 2022 Institute for the Study of War and AEI's Critical Threats Project

\* Assessed Russian advances are areas where ISW assesses Russian forces have operated in or launched attacks against but do not control.

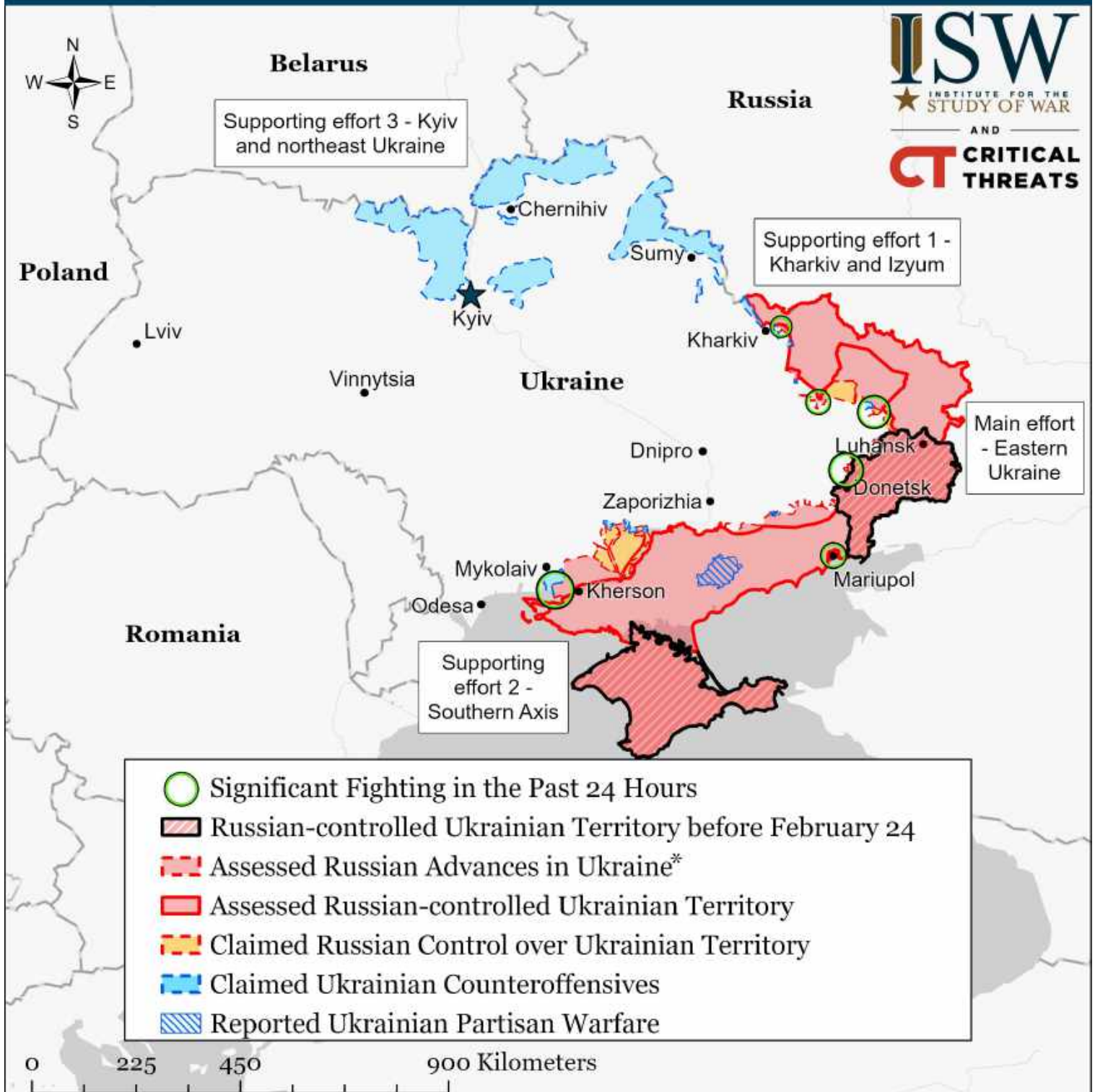
# Assessed Control of Terrain in Ukraine and Main Russian Maneuver Axes as of April 17, 2022, 3:00 PM ET



Map by George Barros, Kateryna Stepanenko, Thomas Bergeron, and Peter Mills  
 © 2022 Institute for the Study of War and AEI's Critical Threats Project

\* Assessed Russian advances are areas where ISW assesses Russian forces have operated in or launched attacks against but do not control.

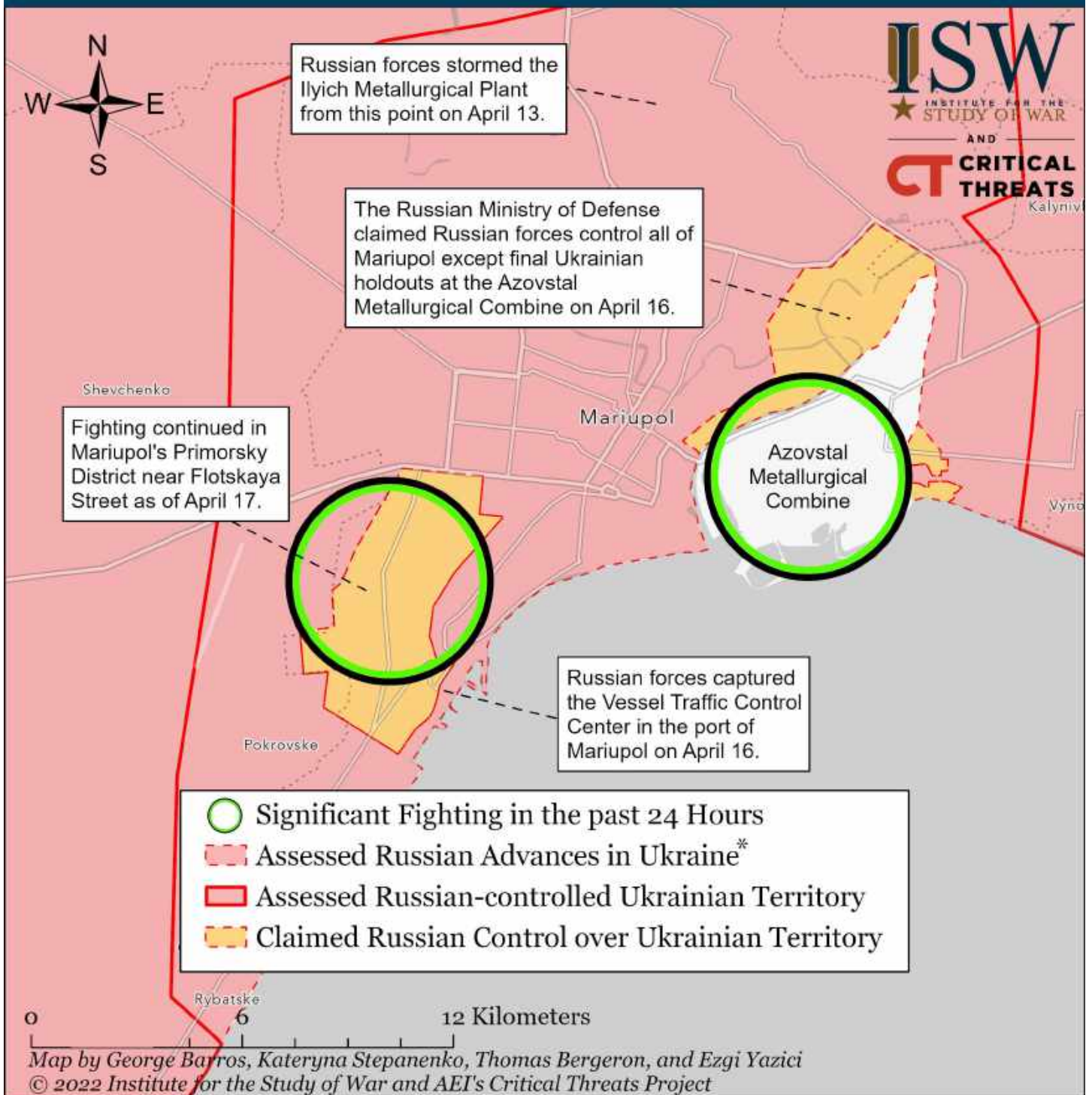
# Assessed Control of Terrain in Ukraine and Main Russian Maneuver Axes as of April 16, 2022, 3:00 PM ET



Map by George Barros, Kateryna Stepanenko, Thomas Bergeron, and Zach Coles  
© 2022 Institute for the Study of War and AEI's Critical Threats Project

\* Assessed Russian advances are areas where ISW assesses Russian forces have operated in or launched attacks against but do not control.

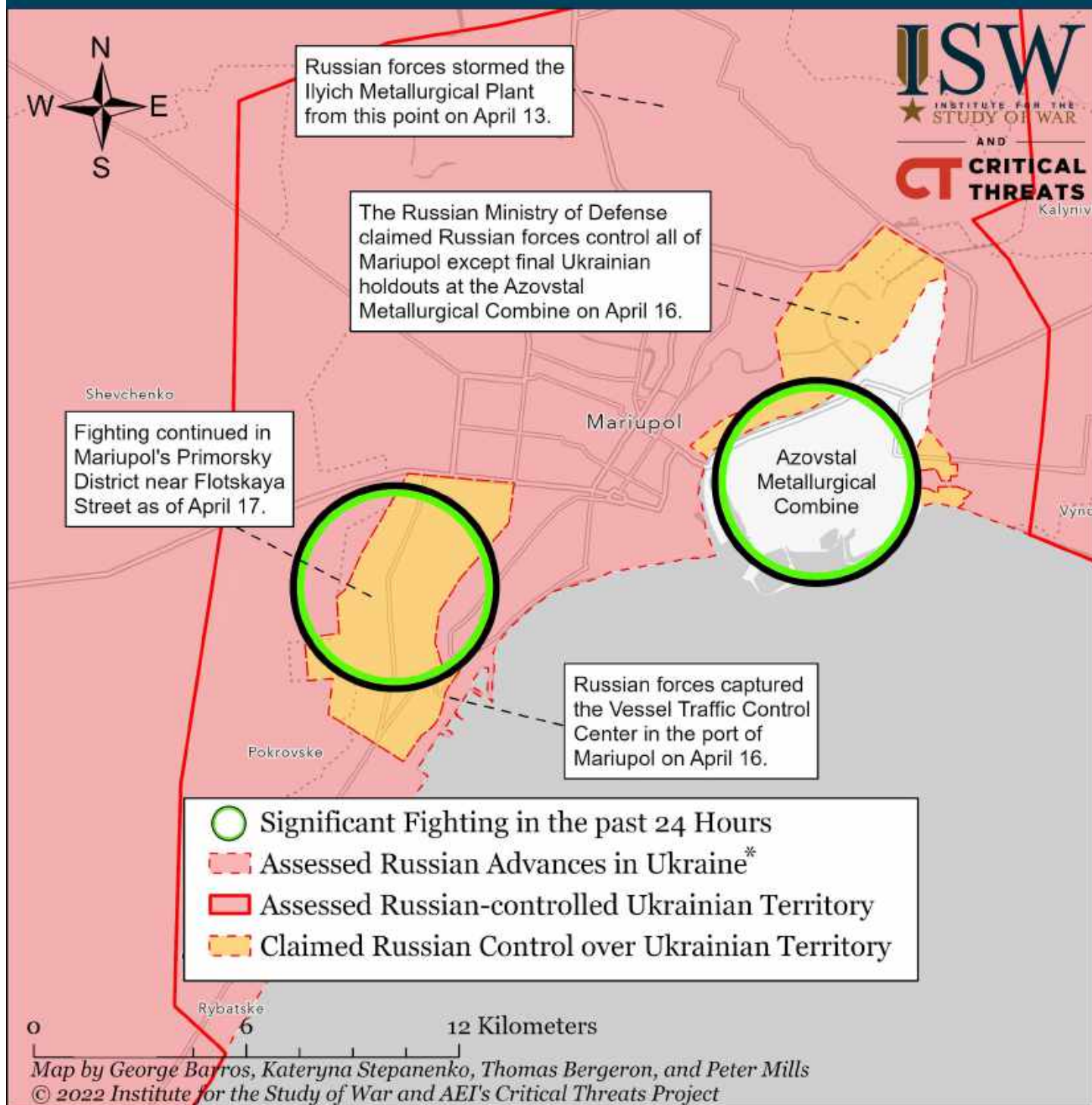
# Assessed Control of Terrain Around Mariupol as of April 18, 2022, 3:00 ET



Russian forces continue their grinding advance into Mariupol, which they have encircled and are bombarding. Russian forces began penetrating Mariupol's city center on March 24. Ukraine's 36th Marine Brigade reported escaping encirclement at the Ilyich Metallurgical Plant and reuniting with the Ukrainian Azov Regiment on April 12, prompting Russian reports of mass Ukrainian surrender. Russian forces advanced toward the Port of Mariupol from southern and northern directions on April 15 and April 16, likely to encircle the remaining Ukrainian forces. Russia's Ministry of Defense claimed that Russian forces control all of Mariupol except the Azovstal Metallurgical Combine on April 16. Mariupol's remaining defenders refused a Russian ultimatum to surrender by 1300 local time on April 17. Mariupol's Ukrainian defenders will likely fight to the last man at the Azovstal Metallurgical Combine in the coming hours and possibly days.

\* Assessed Russian advances are areas where ISW assesses Russian forces have operated in or launched attacks against but do not control.

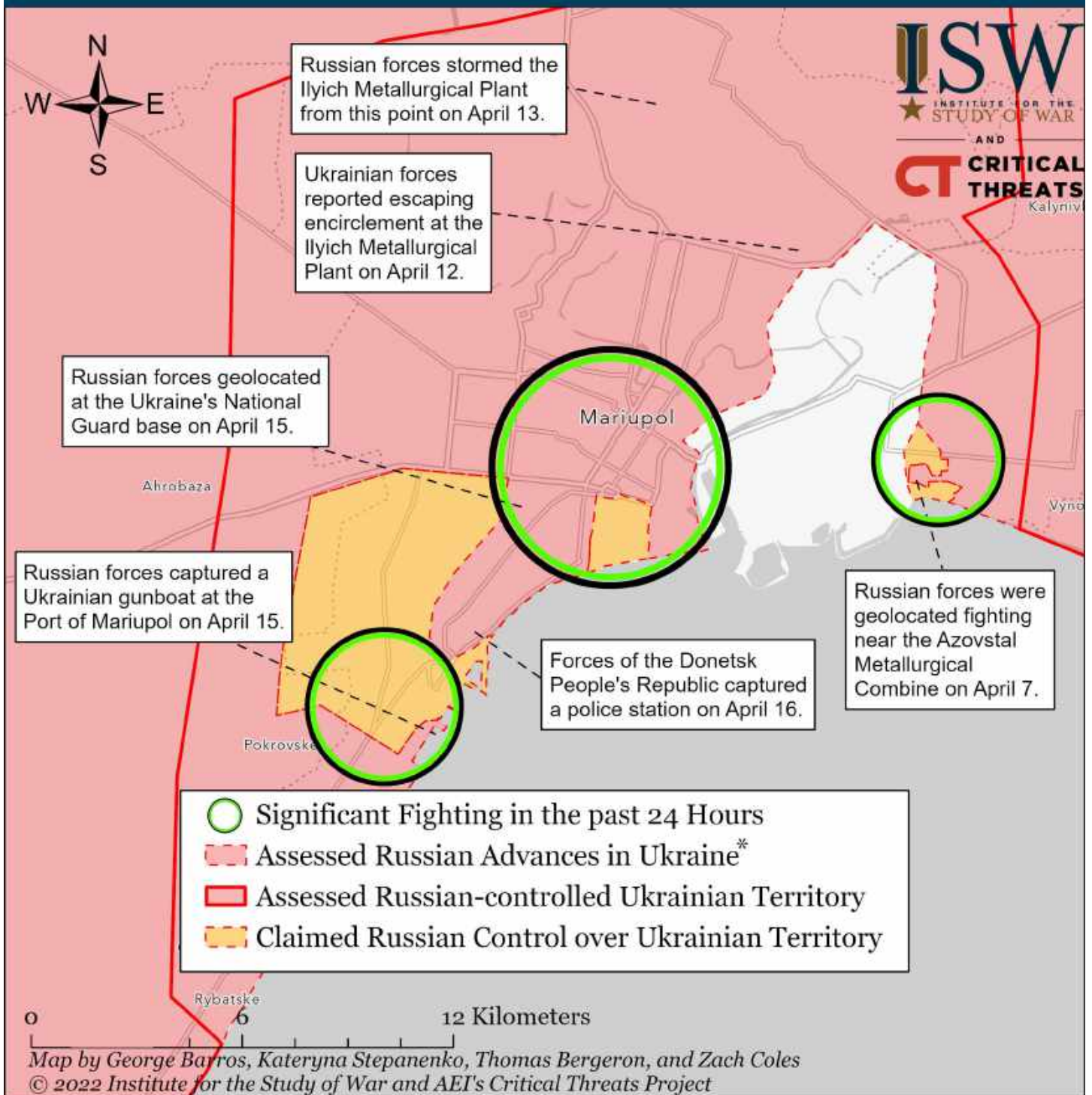
# Assessed Control of Terrain Around Mariupol as of April 17, 2022, 3:00 ET



Russian forces continue their grinding advance into Mariupol, which they have encircled and are bombarding. Russian forces began penetrating Mariupol's city center on March 24. Ukraine's 36th Marine Brigade reported escaping encirclement at the Ilyich Metallurgical Plant and reuniting with the Ukrainian Azov Regiment on April 12, prompting Russian reports of mass Ukrainian surrender. Russian forces advanced toward the Port of Mariupol from southern and northern directions on April 15 and April 16, likely to encircle the remaining Ukrainian forces. Russia's Ministry of Defense claimed that Russian forces control all of Mariupol except the Azovstal Metallurgical Combine on April 16. Mariupol's remaining defenders refused a Russian ultimatum to surrender by 1300 local time on April 17. Mariupol's Ukrainian defenders will likely fight to the last man at the Azovstal Metallurgical Combine in the coming hours and possibly days.

\* Assessed Russian advances are areas where ISW assesses Russian forces have operated in or launched attacks against but do not control.

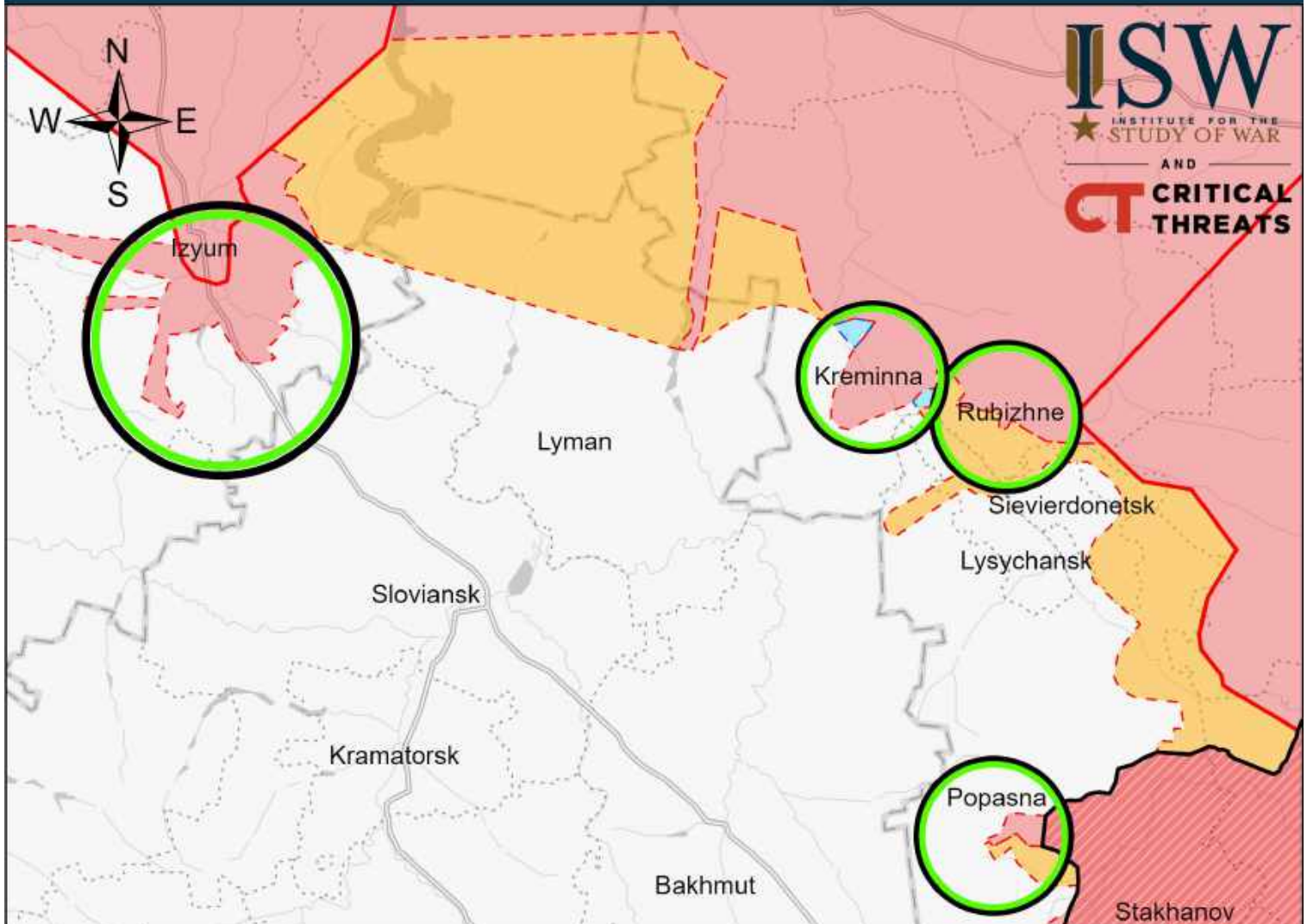
# Assessed Control of Terrain Around Mariupol as of April 16, 2022, 3:00 ET



Russian forces continue their grinding advance into Mariupol, which they have encircled and are bombarding. Fighting is proceeding block-by-block and slowly. Russian forces began penetrating Mariupol's city center on March 24. Ukraine's 36th Marine Brigade reported escaping encirclement at the Ilyich Metallurgical Plant and reuniting with the Ukrainian Azov Regiment on April 12, prompting Russian reports of mass Ukrainian surrender. Russian forces advanced toward the Port of Mariupol from southern and northern directions on April 15 and April 16, likely to encircle the remaining Ukrainian forces. Russian forces also attacked Ukrainian positions at the Azovstal Metallurgical Combine from the northeast.

\* Assessed Russian advances are areas where ISW assesses Russian forces have operated in or launched attacks against but do not control.

# Assessed Control of Terrain Around Luhansk as of April 18, 2022, 3:00 ET



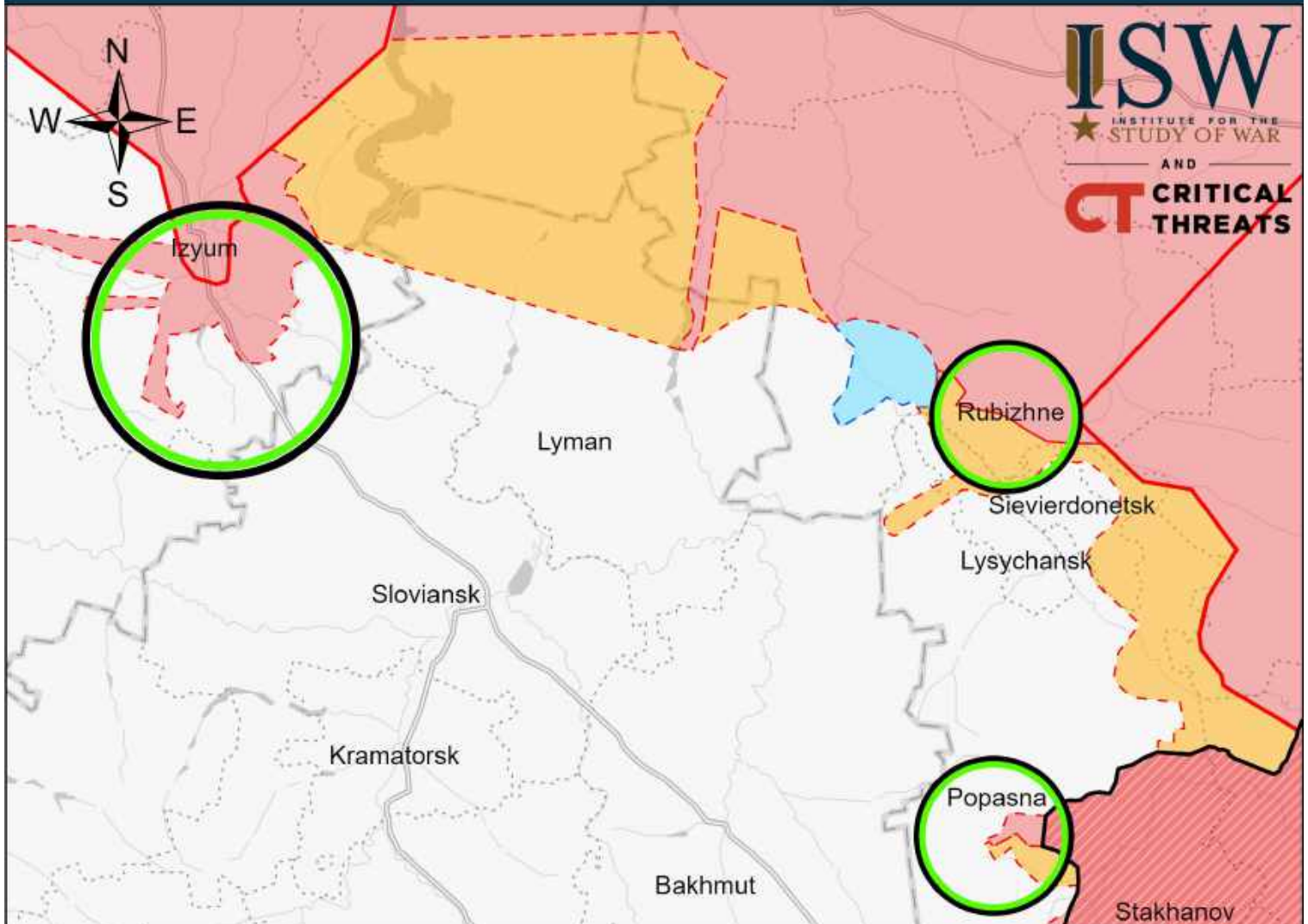
- Russian-controlled Ukrainian Territory before February 24
- Significant Fighting in the past 24 Hours
- Assessed Russian Advances in Ukraine\*
- Assessed Russian-controlled Ukrainian Territory
- Claimed Russian Control over Ukrainian Territory
- Claimed Ukrainian Counteroffensives

0 15 30 60 Kilometers

Map by George Barros, Kateryna Stepanenko, Thomas Bergeron, and Ezgi Yazici  
© 2022 Institute for the Study of War and AEI's Critical Threats Project

\* Assessed Russian advances are areas where ISW assesses Russian forces have operated in or launched attacks against but do not control.

# Assessed Control of Terrain Around Luhansk as of April 17, 2022, 3:00 ET



**ISW**  
INSTITUTE FOR THE  
STUDY OF WAR  
AND  
**CRITICAL  
THREATS**

- Russian-controlled Ukrainian Territory before February 24
- Significant Fighting in the past 24 Hours
- Assessed Russian Advances in Ukraine\*
- Assessed Russian-controlled Ukrainian Territory
- Claimed Russian Control over Ukrainian Territory
- Claimed Ukrainian Counteroffensives

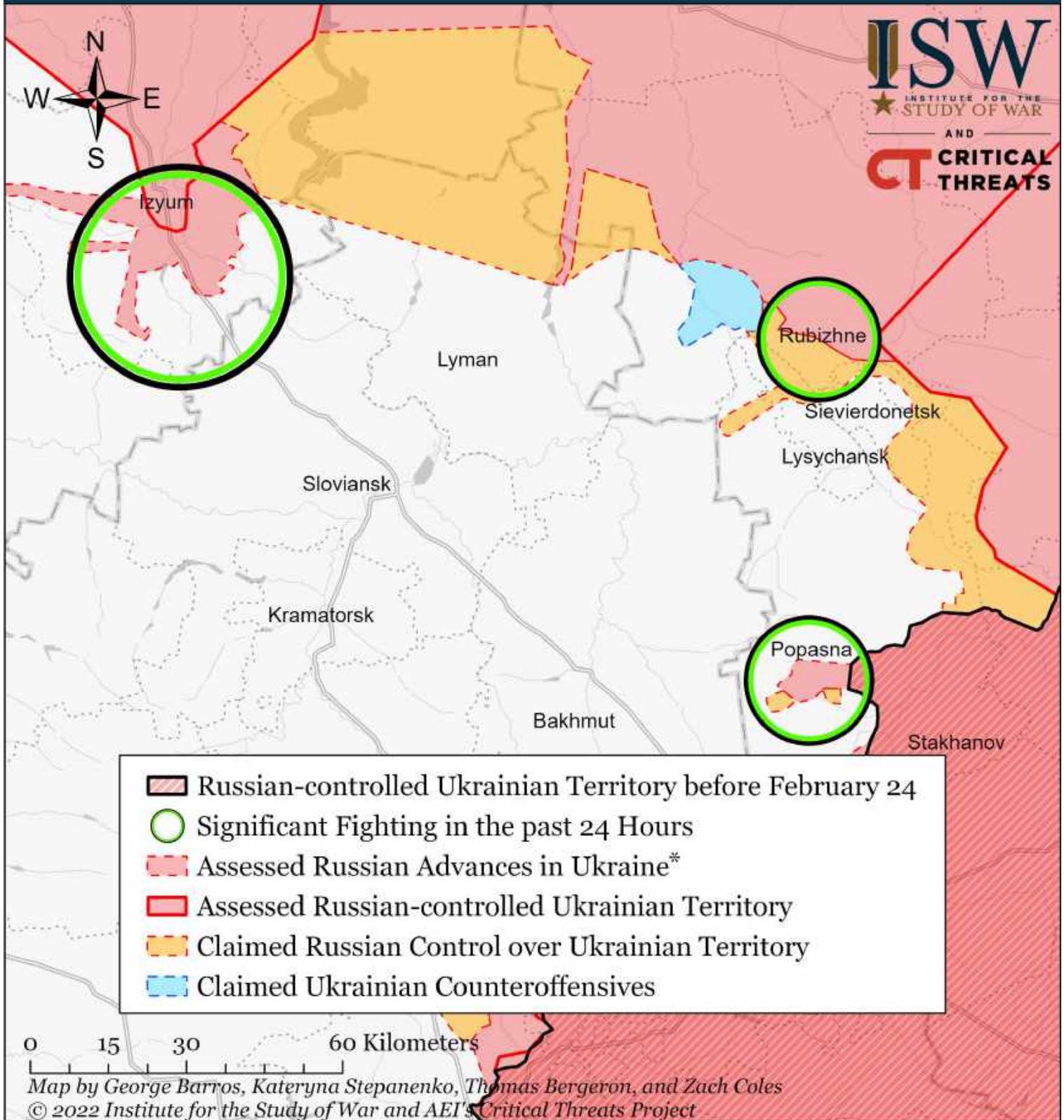
0 15 30 60 Kilometers

Map by George Barros, Kateryna Stepanenko, Thomas Bergeron, and Peter Mills  
© 2022 Institute for the Study of War and AEI's Critical Threats Project

\* Assessed Russian advances are areas where ISW assesses Russian forces have operated in or launched attacks against but do not control.

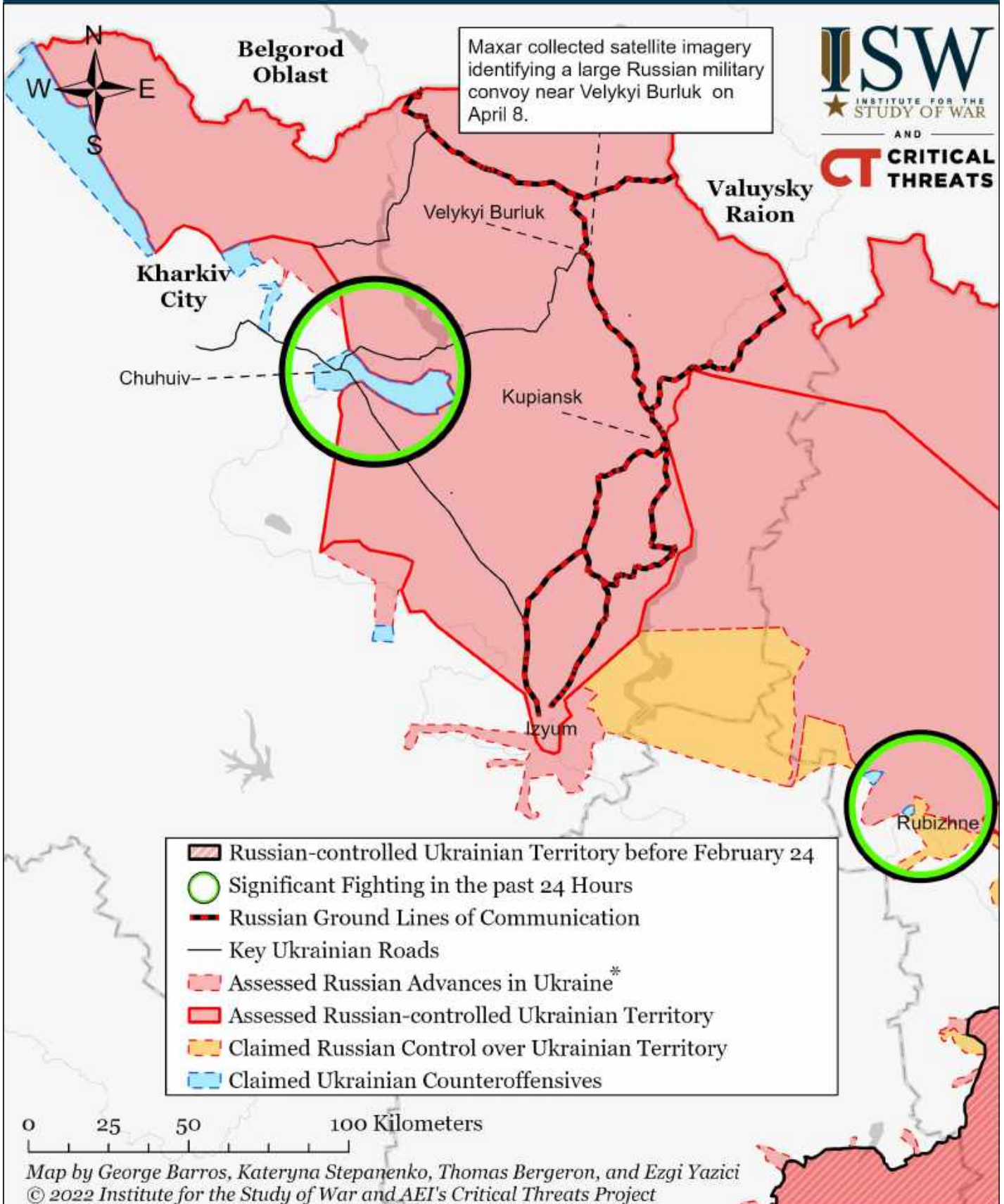


# Assessed Control of Terrain Around Luhansk as of April 16, 2022, 3:00 ET



\* Assessed Russian advances are areas where ISW assesses Russian forces have operated in or launched attacks against but do not control.

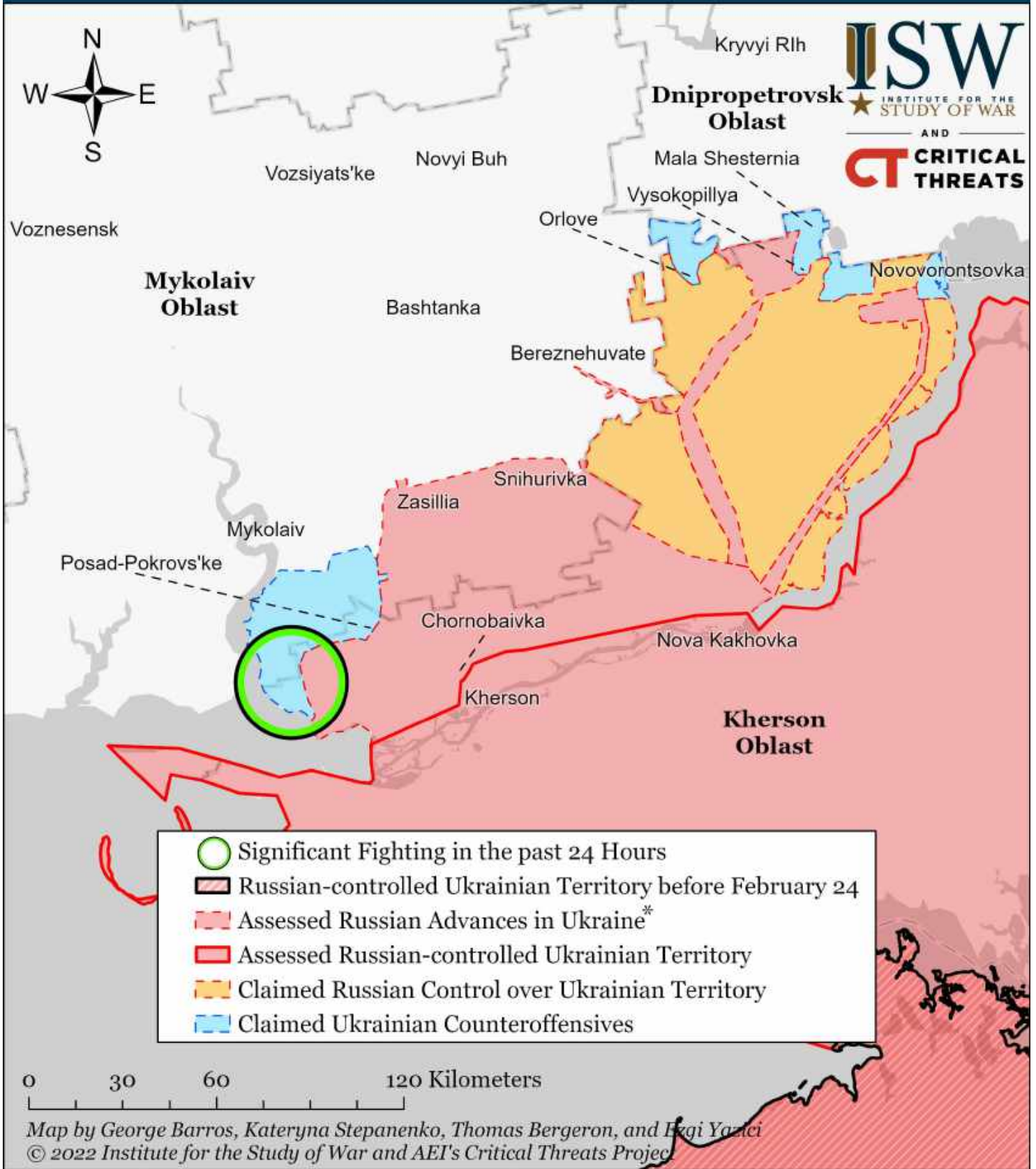
# Assessed Control of Terrain Around Kharkiv as of April 18, 2022, 3:00 PM ET



\* Assessed Russian advances are areas where ISW assesses Russian forces have operated in or launched attacks against but do not control.

Kharkiv Oblast Governor Oleh Synyehubov stated on April 17 that Ukrainian forces advanced east during counteroffensive operations east of Mala Rohan. ISW will map this counteroffensive when we collect enough concrete information to do so.

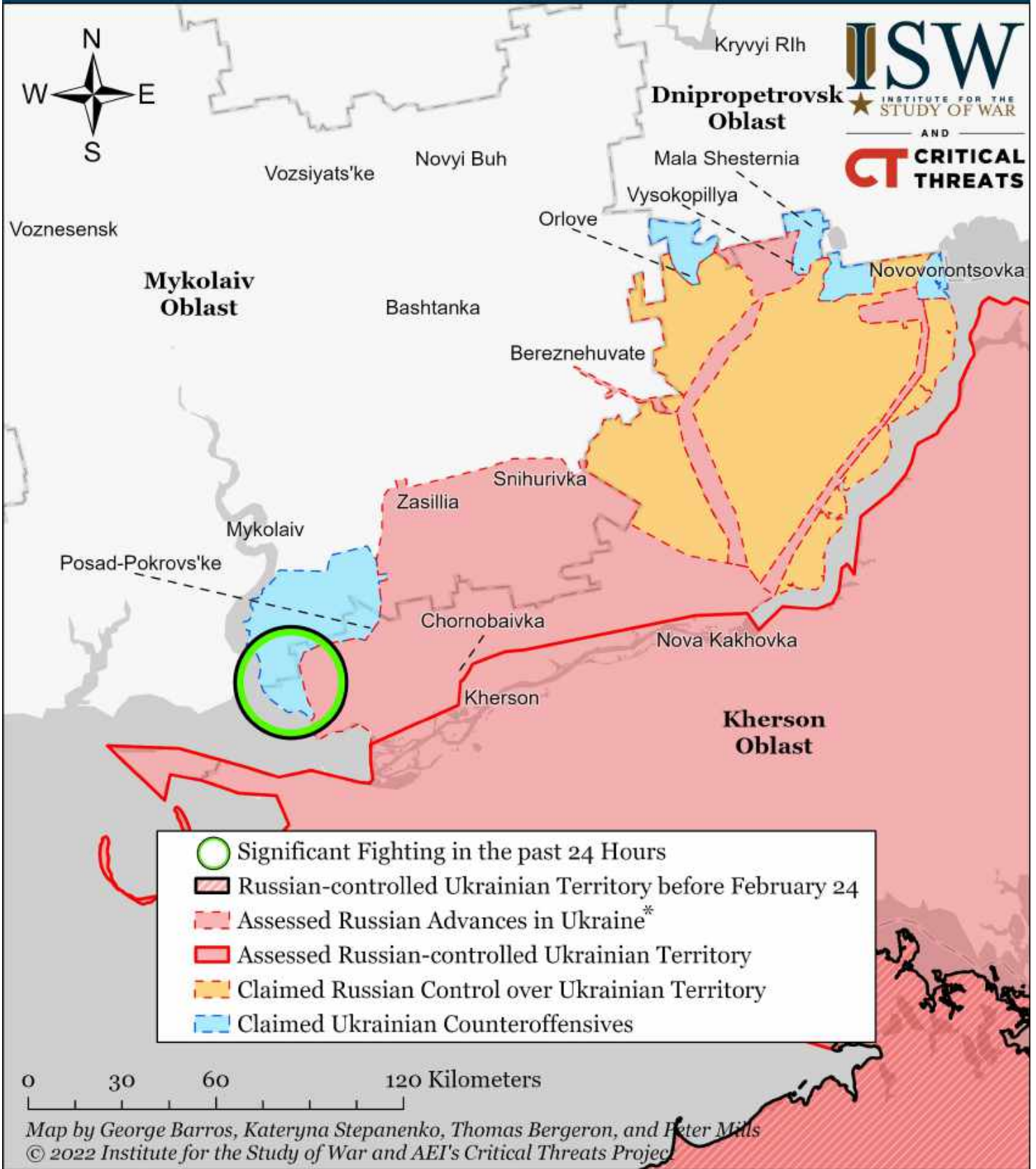
# Assessed Control of Terrain Around Kherson and Mykolaiv as of April 18, 2022, 3:00 PM ET



\* Assessed Russian advances are areas where ISW assesses Russian forces have operated in or launched attacks against but do not control.

Note: Ukrainian authorities claimed on April 14 that the Ukrainian 80th Airmobile Brigade (which previously operated near Mykolaiv) liberated unspecified villages in southern Ukraine, but did not name those villages for operational security reasons. We will update our maps to reflect this data when we collect more data on this claimed counterattack.

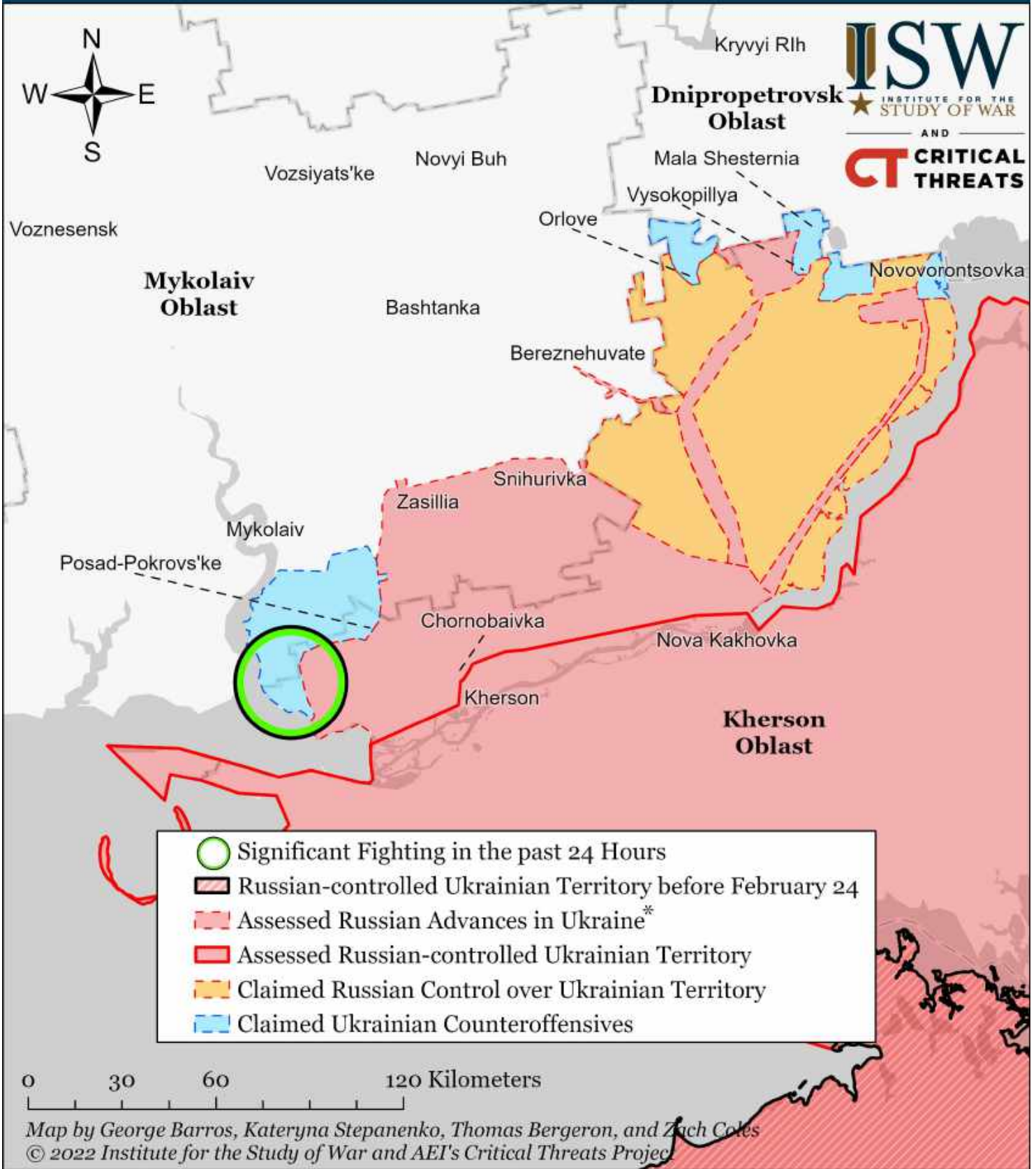
# Assessed Control of Terrain Around Kherson and Mykolaiv as of April 17, 2022, 3:00 PM ET



\* Assessed Russian advances are areas where ISW assesses Russian forces have operated in or launched attacks against but do not control.

Note: Ukrainian authorities claimed on April 14 that the Ukrainian 80th Airmobile Brigade (which previously operated near Mykolaiv) liberated unspecified villages in southern Ukraine, but did not name those villages for operational security reasons. We will update our maps to reflect this data when we collect more data on this claimed counterattack.

# Assessed Control of Terrain Around Kherson and Mykolaiv as of April 16, 2022, 3:00 PM ET



\* Assessed Russian advances are areas where ISW assesses Russian forces have operated in or launched attacks against but do not control.

Note: Ukrainian authorities claimed on April 14 that the Ukrainian 80th Airmobile Brigade (which previously operated near Mykolaiv) liberated unspecified villages in southern Ukraine, but did not name those villages for operational security reasons. We will update our maps to reflect this data when we collect more data on this claimed counterattack.