

Assessed Control of Terrain in Ukraine and Main Russian Maneuver Axes as of April 24, 2022, 3:00 PM ET



Map by George Barros, Kateryna Stepanenko, Thomas Bergeron, Peter Mills
© 2022 Institute for the Study of War and AEI's Critical Threats Project

* Assessed Russian advances are areas where ISW assesses Russian forces have operated in or launched attacks against but do not control.

Assessed Control of Terrain in Ukraine and Main Russian Maneuver Axes as of April 23, 2022, 3:00 PM ET



Map by George Barros, Kateryna Stepanenko, Thomas Bergeron, Zach Coles
© 2022 Institute for the Study of War and AEI's Critical Threats Project

* Assessed Russian advances are areas where ISW assesses Russian forces have operated in or launched attacks against but do not control.

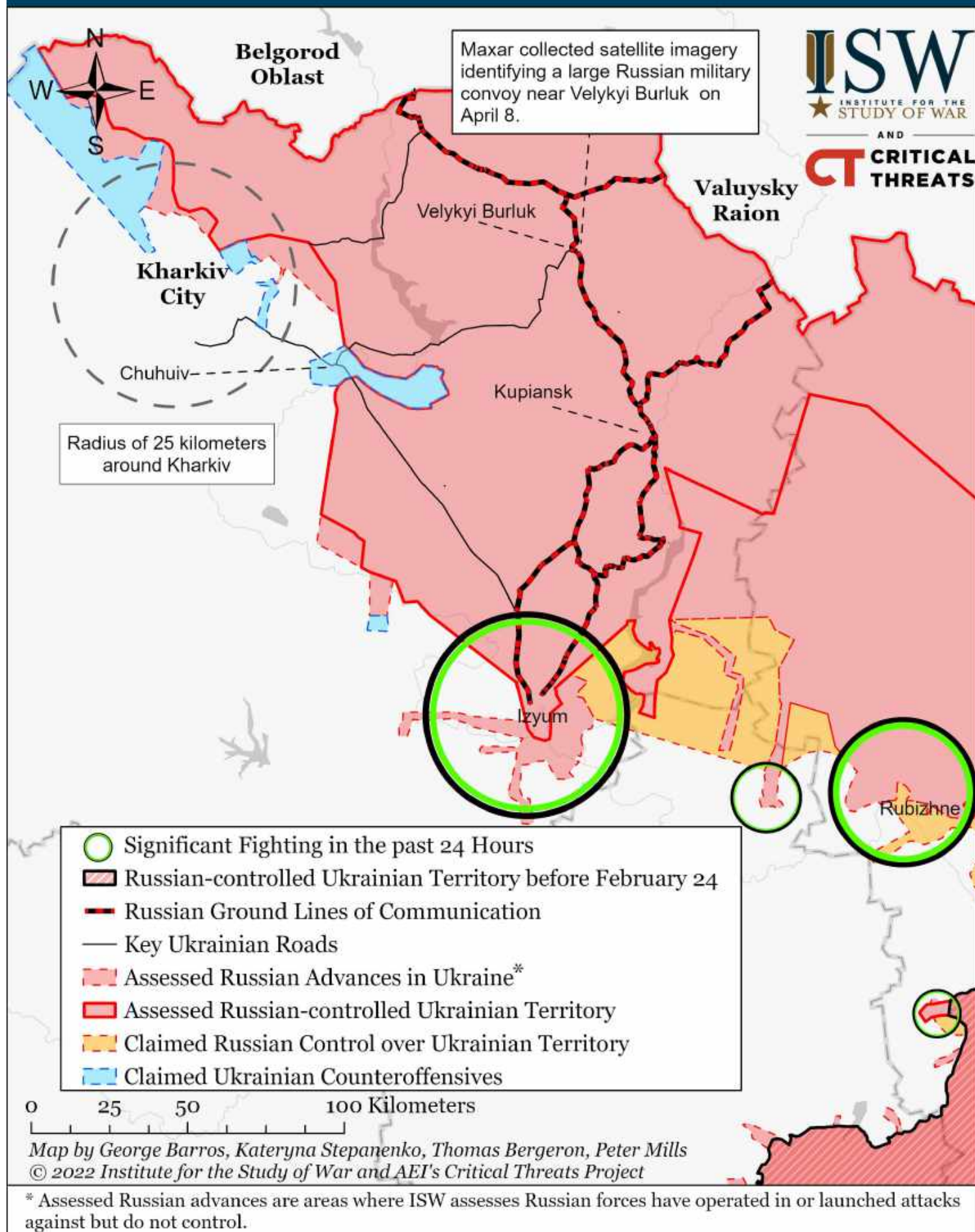
Assessed Control of Terrain in Ukraine and Main Russian Maneuver Axes as of April 22, 2022, 3:00 PM ET



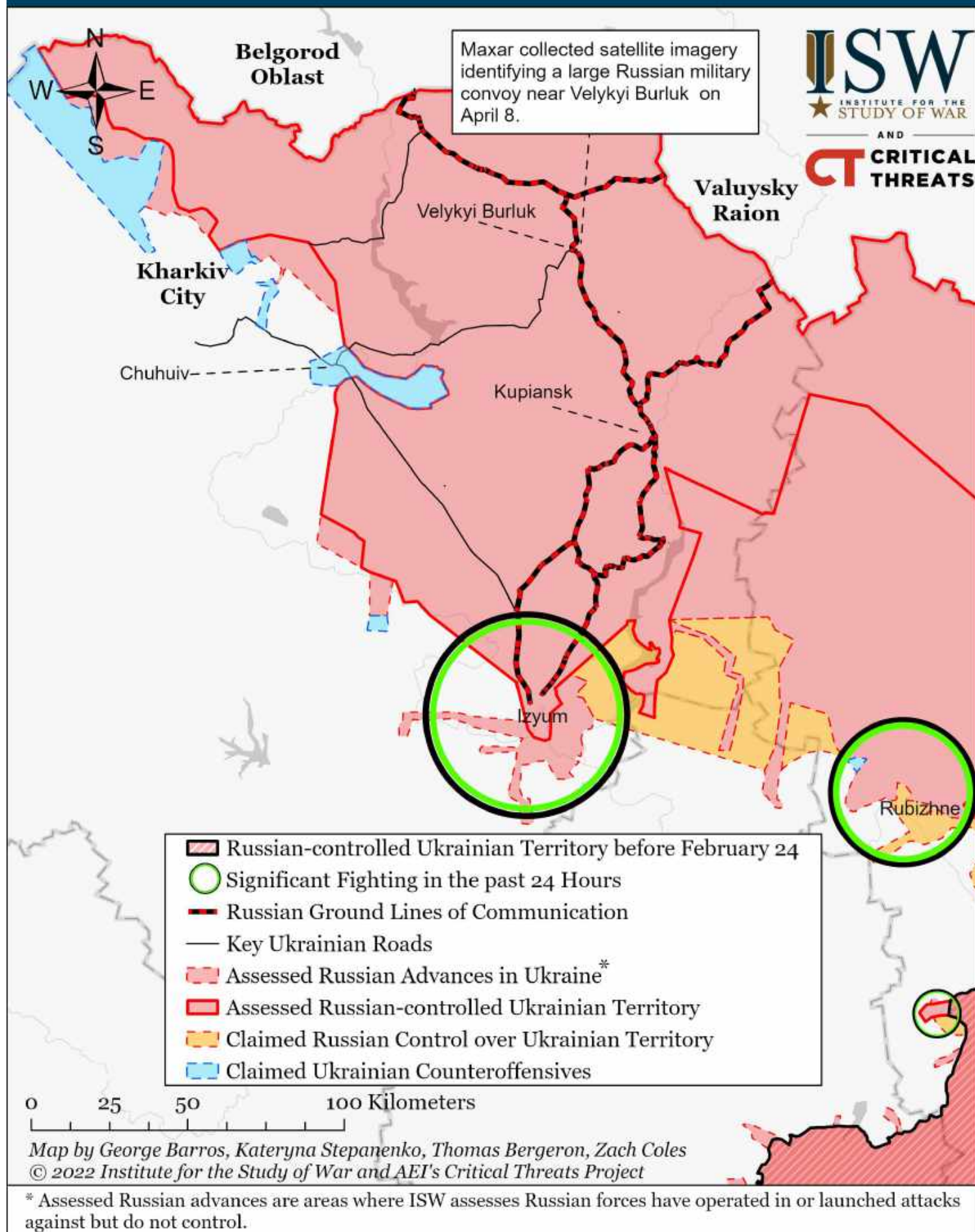
Map by George Barros, Kateryna Stepanenko, Thomas Bergeron
© 2022 Institute for the Study of War and AEI's Critical Threats Project

* Assessed Russian advances are areas where ISW assesses Russian forces have operated in or launched attacks against but do not control.

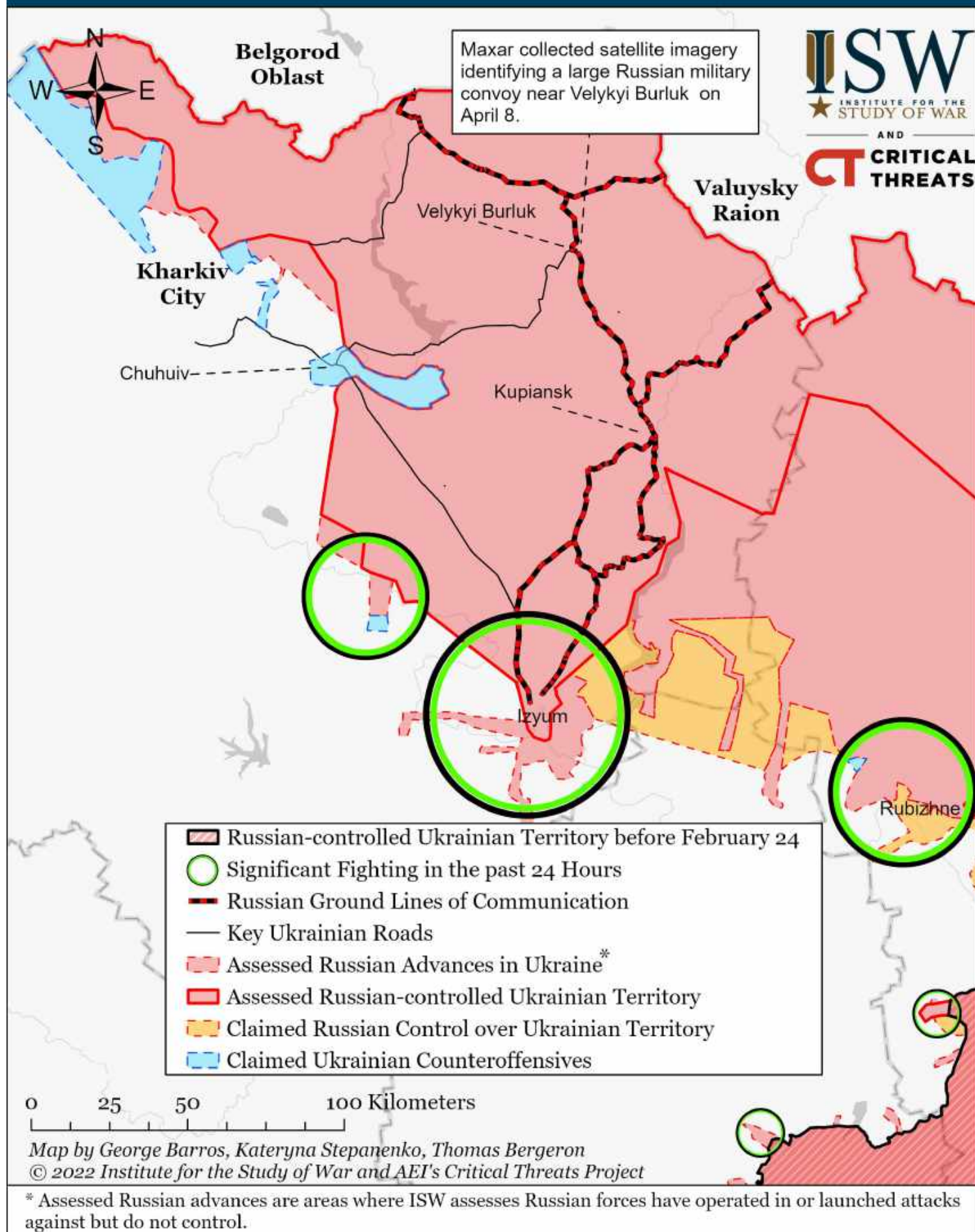
Assessed Control of Terrain Around Kharkiv as of April 24, 2022, 3:00 PM ET



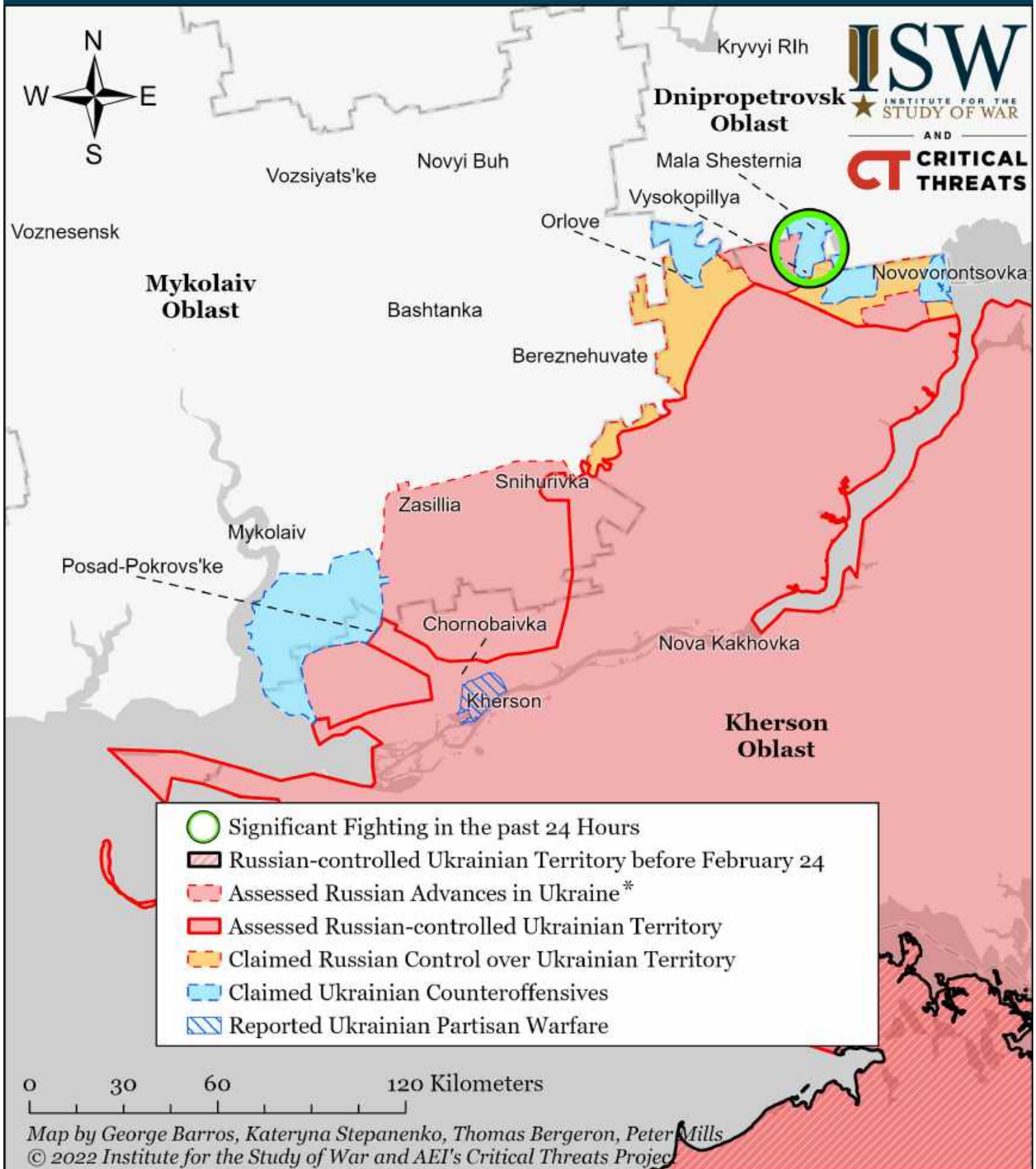
Assessed Control of Terrain Around Kharkiv as of April 23, 2022, 3:00 PM ET



Assessed Control of Terrain Around Kharkiv as of April 22, 2022, 3:00 PM ET

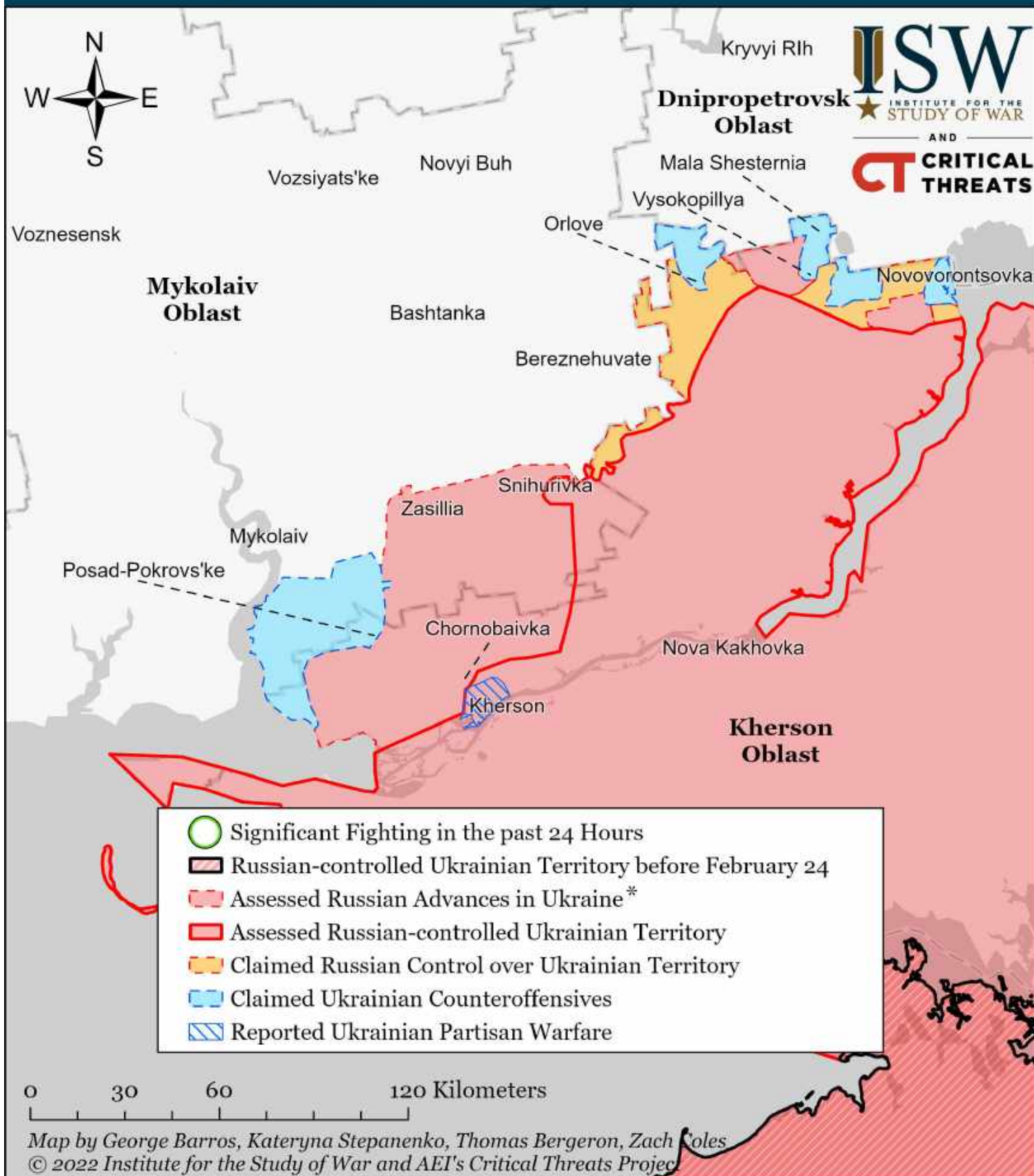


Assessed Control of Terrain Around Kherson and Mykolaiv as of April 24, 2022, 3:00 PM ET



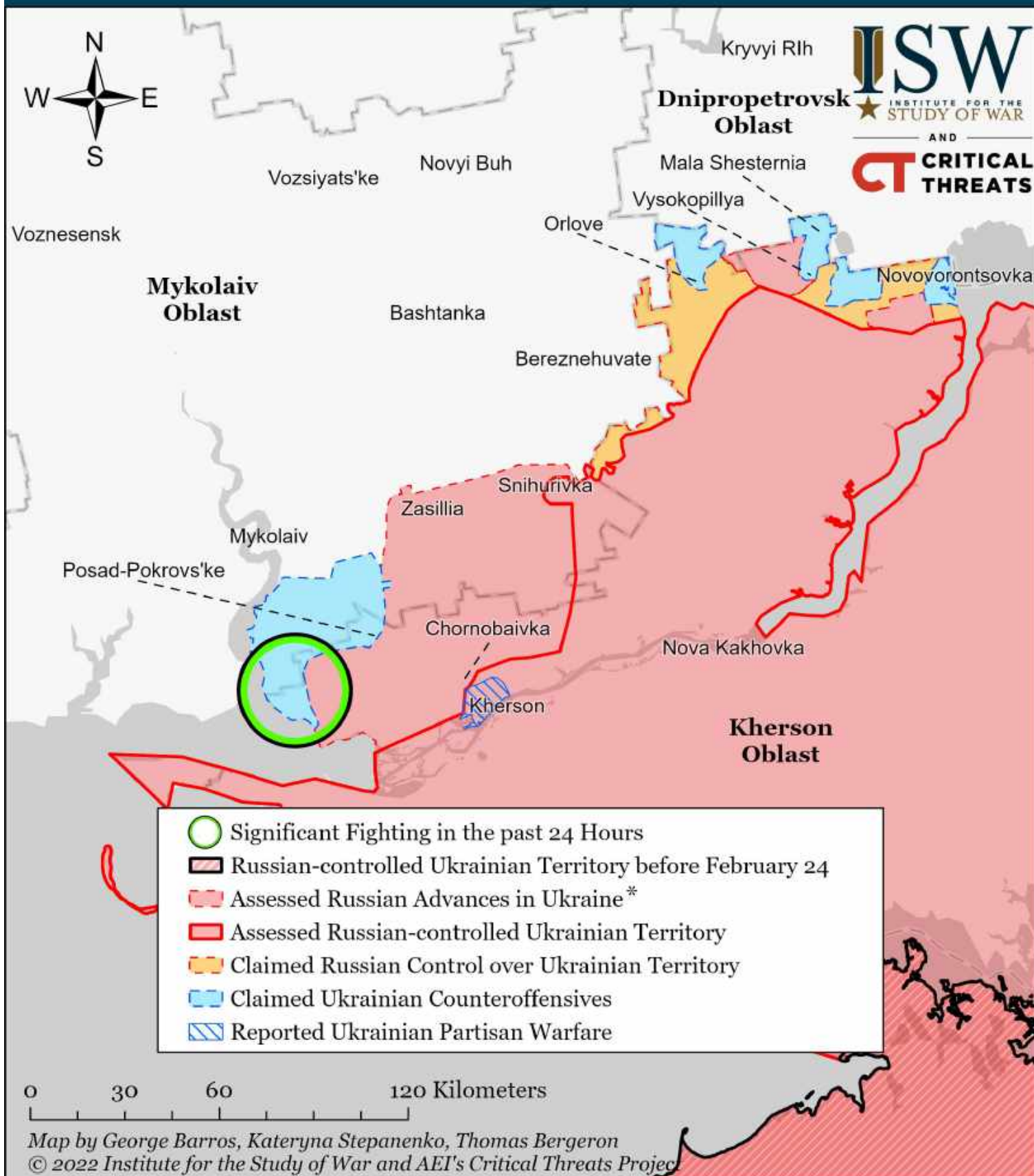
* Assessed Russian advances are areas where ISW assesses Russian forces have operated in or launched attacks against but do not control.

Assessed Control of Terrain Around Kherson and Mykolaiv as of April 23, 2022, 3:00 PM ET



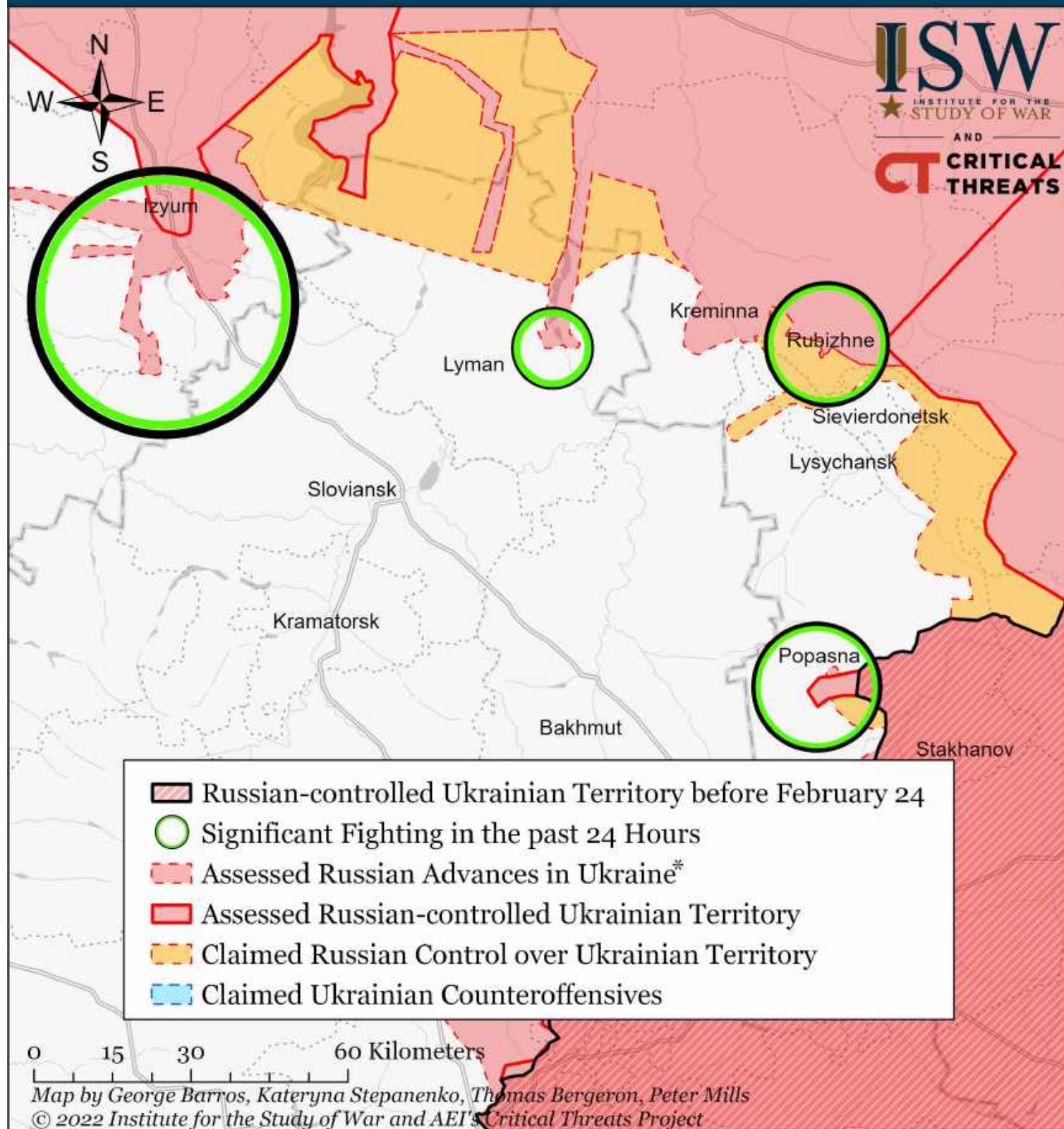
* Assessed Russian advances are areas where ISW assesses Russian forces have operated in or launched attacks against but do not control.

Assessed Control of Terrain Around Kherson and Mykolaiv as of April 22, 2022, 3:00 PM ET



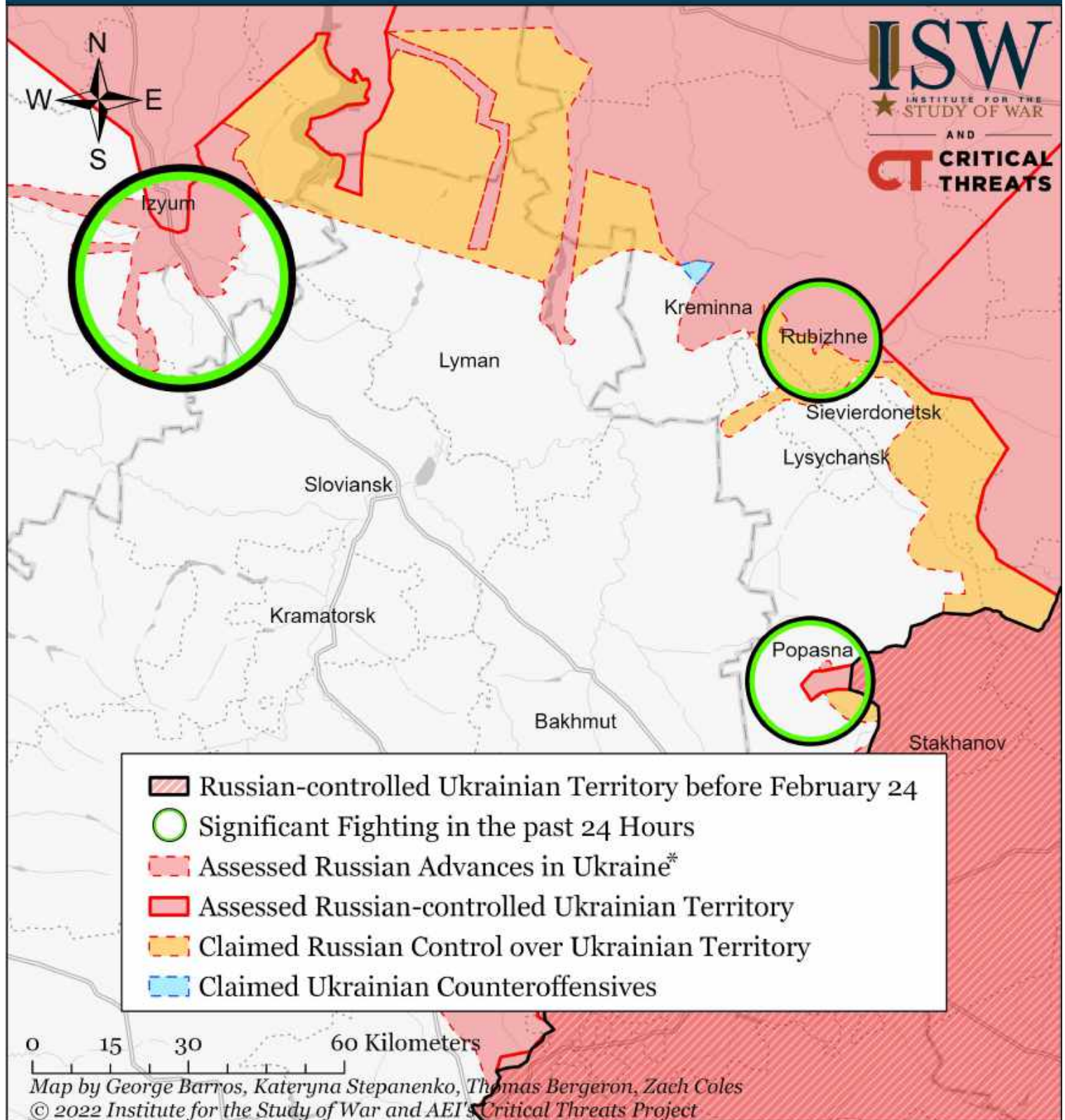
* Assessed Russian advances are areas where ISW assesses Russian forces have operated in or launched attacks against but do not control.

Assessed Control of Terrain Around Luhansk as of April 24, 2022, 3:00 ET



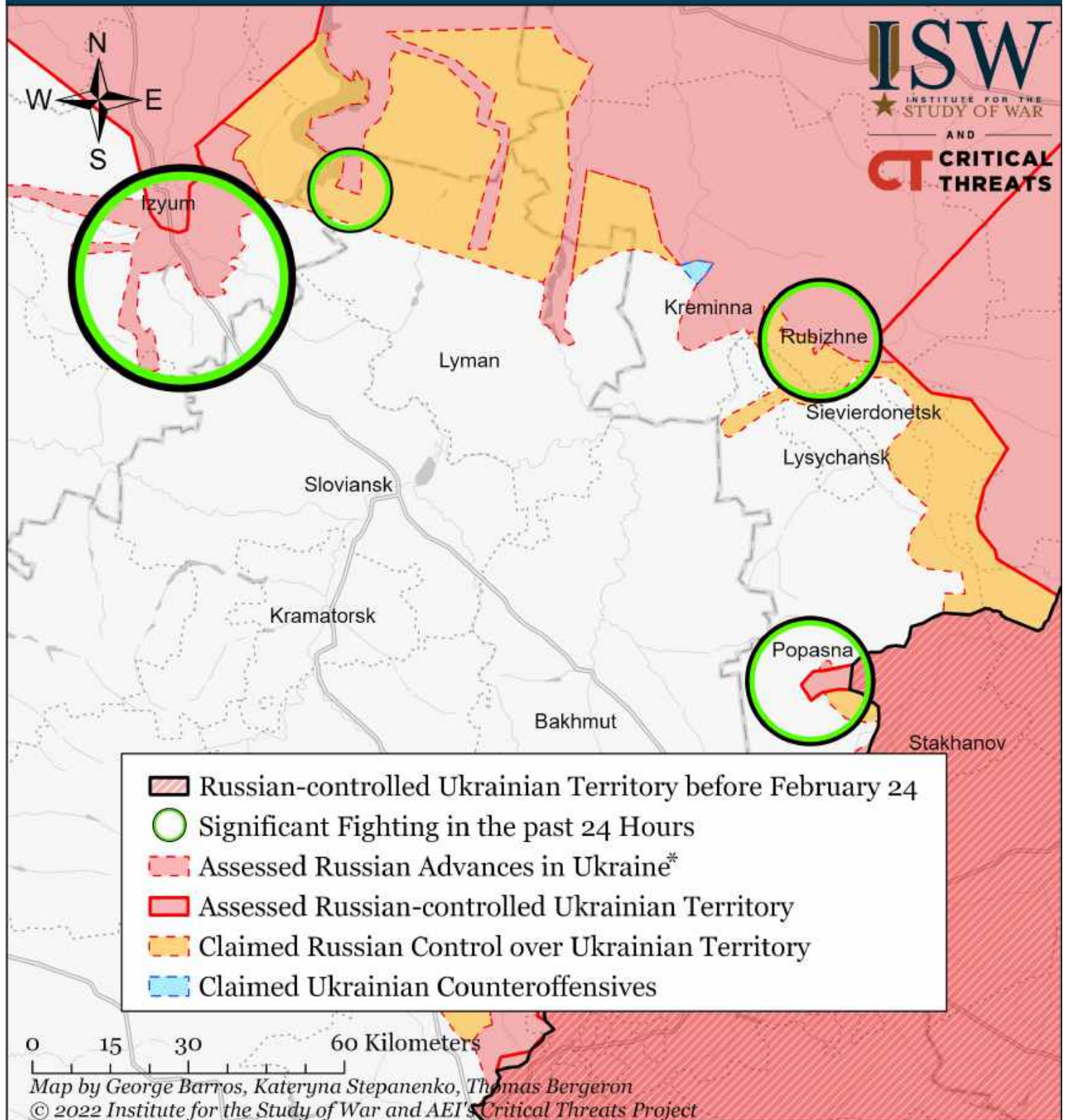
* Assessed Russian advances are areas where ISW assesses Russian forces have operated in or launched attacks against but do not control.

Assessed Control of Terrain Around Luhansk as of April 23, 2022, 3:00 ET



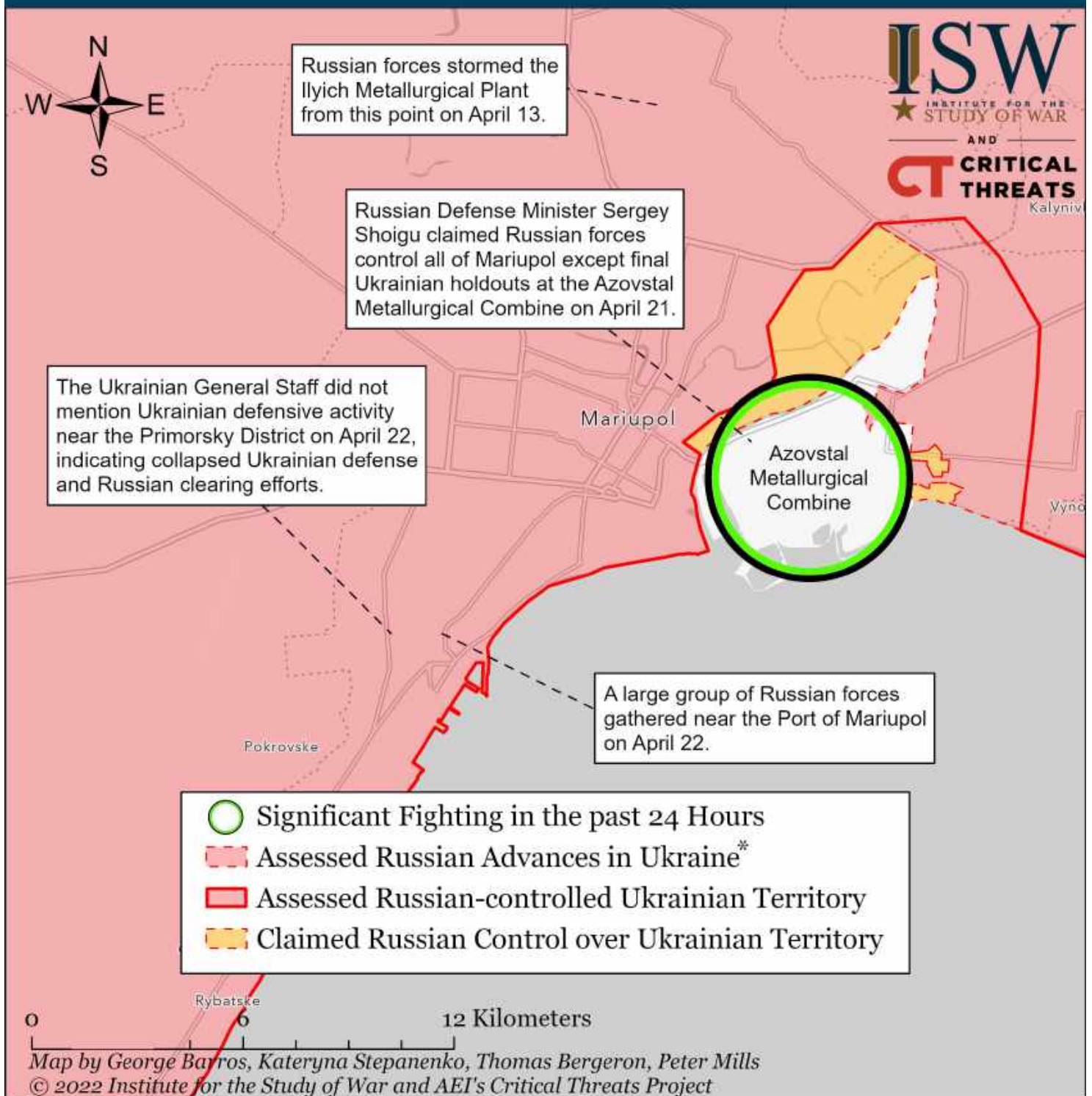
* Assessed Russian advances are areas where ISW assesses Russian forces have operated in or launched attacks against but do not control.

Assessed Control of Terrain Around Luhansk as of April 22, 2022, 3:00 ET



* Assessed Russian advances are areas where ISW assesses Russian forces have operated in or launched attacks against but do not control.

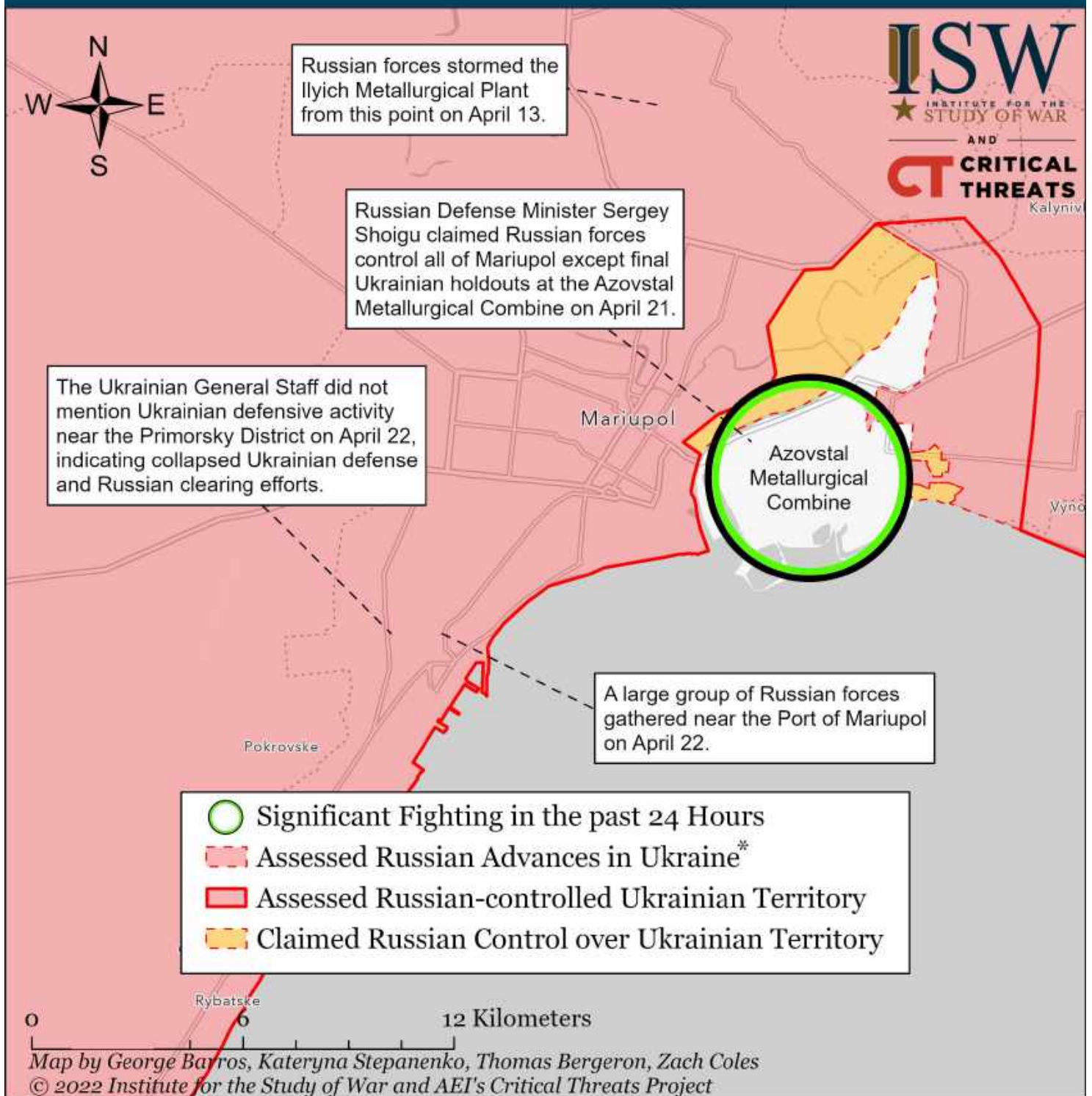
Assessed Control of Terrain Around Mariupol as of April 24, 2022, 3:00 ET



The Kremlin declared victory in Mariupol on April 21 after capturing the city besides Ukrainian holdouts in the encircled Azovstal Metallurgical Combine. Russian forces may launch an assault on Azovstal despite Russian President Vladimir Putin's order to maintain a siege. Russian war reporters filmed some Russian elements redeploying from Mariupol northward on April 24. The Ukrainian General Staff notably did not mention Ukrainian defensive activity near the port of Mariupol or Primorsky District on April 22, indicating Russian clearing efforts. The Kremlin will spin the (still incomplete) capture of Mariupol into a major victory in Ukraine to compensate for stalled or failed Russian offensives elsewhere.

* Assessed Russian advances are areas where ISW assesses Russian forces have operated in or launched attacks against but do not control.

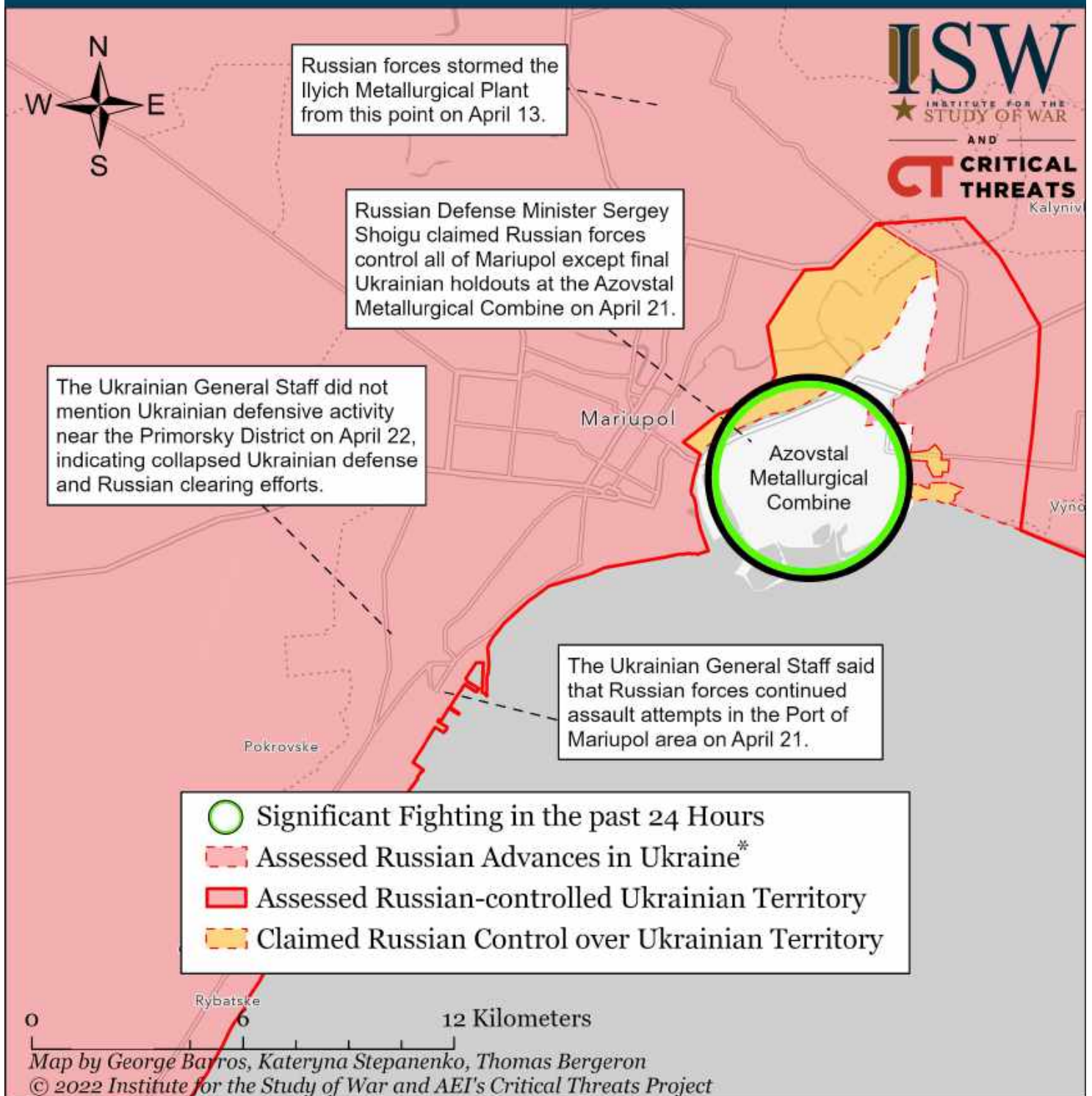
Assessed Control of Terrain Around Mariupol as of April 23, 2022, 3:00 ET



The Kremlin declared victory in Mariupol on April 21 after capturing the city besides Ukrainian holdouts in the encircled Azovstal Metallurgical Combine. Russian forces will attempt to starve out remaining Ukrainian defenders in the Azovstal Metallurgical Combine rather than clear it through likely costly assaults. Russian war reporters filmed some Russian elements redeploying from Mariupol northward on April 22 and April 23. The Ukrainian General Staff notably did not mention Ukrainian defensive activity near the port of Mariupol or Primorsky District on April 22, indicating Russian clearing efforts. The Kremlin will spin the (still incomplete) capture of Mariupol into a major victory in Ukraine to compensate for stalled or failed Russian offensives elsewhere.

* Assessed Russian advances are areas where ISW assesses Russian forces have operated in or launched attacks against but do not control.

Assessed Control of Terrain Around Mariupol as of April 22, 2022, 3:00 ET



The Kremlin declared victory in Mariupol on April 21 after capturing the city besides Ukrainian holdouts in the encircled Azovstal Metallurgical Combine. Russian forces will attempt to starve out remaining Ukrainian defenders in the Azovstal Metallurgical Combine rather than clear it through likely costly assaults. Russian war reporters filmed some Russian elements redeploying from Mariupol northward on April 22. The Ukrainian General Staff notably did not mention Ukrainian defensive activity near the port of Mariupol or Primorsky District on April 22, indicating Russian clearing efforts. The Kremlin will spin the (still incomplete) capture of Mariupol into a major victory in Ukraine to compensate for stalled or failed Russian offensives elsewhere.

* Assessed Russian advances are areas where ISW assesses Russian forces have operated in or launched attacks against but do not control.