

Assessed Control of Terrain in Ukraine and Main Russian Maneuver Axes as of April 27, 2022, 3:00 PM ET



Map by George Barros, Kateryna Stepanenko, Thomas Bergeron
© 2022 Institute for the Study of War and AEI's Critical Threats Project

* Assessed Russian advances are areas where ISW assesses Russian forces have operated in or launched attacks against but do not control.

Assessed Control of Terrain in Ukraine and Main Russian Maneuver Axes as of April 26, 2022, 3:00 PM ET



Map by George Barros, Kateryna Stepanenko, Thomas Bergeron, Peter Mills
© 2022 Institute for the Study of War and AEI's Critical Threats Project

* Assessed Russian advances are areas where ISW assesses Russian forces have operated in or launched attacks against but do not control.

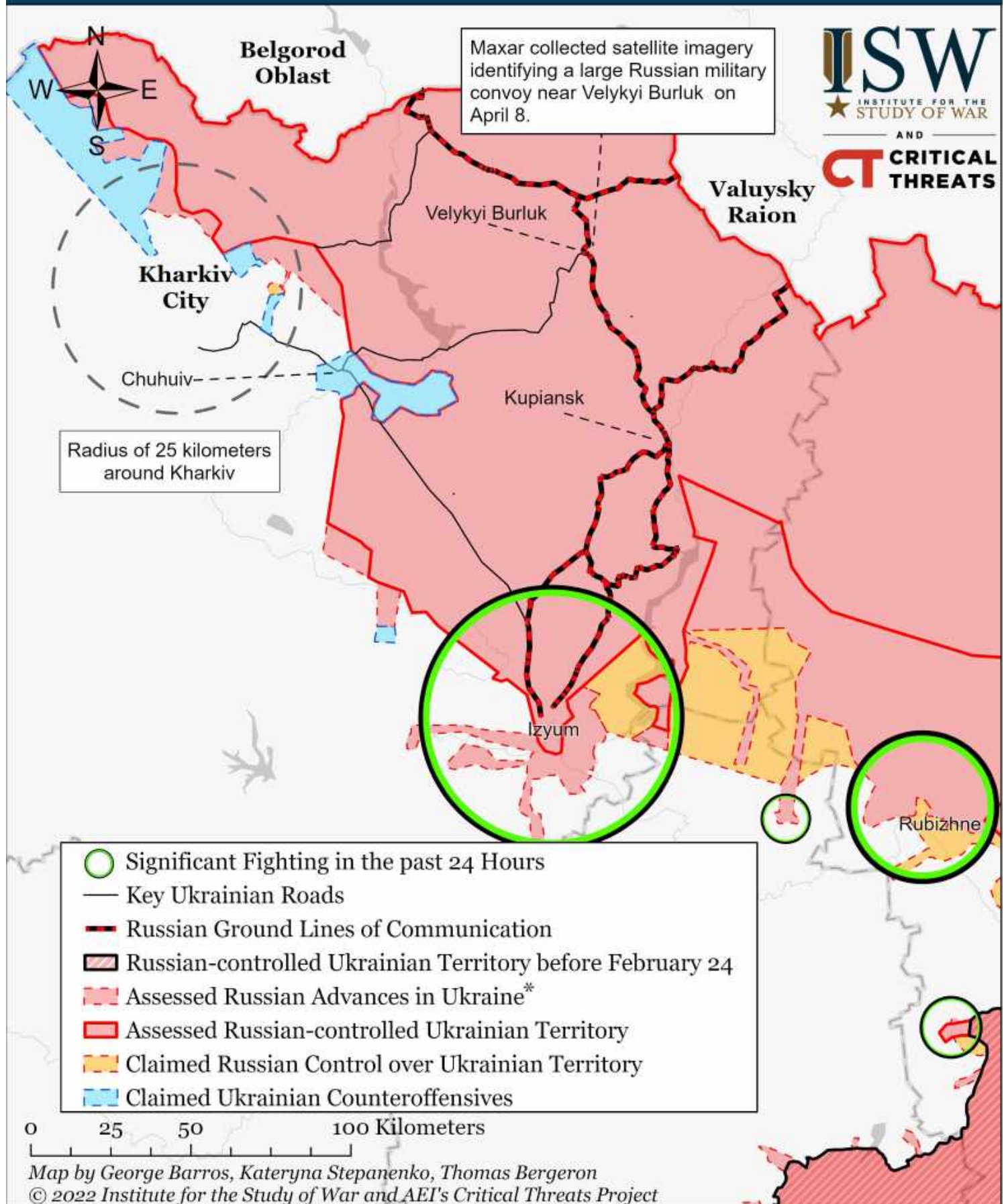
Assessed Control of Terrain in Ukraine and Main Russian Maneuver Axes as of April 25, 2022, 3:00 PM ET



Map by George Barros, Kateryna Stepanenko, Thomas Bergeron
© 2022 Institute for the Study of War and AEI's Critical Threats Project

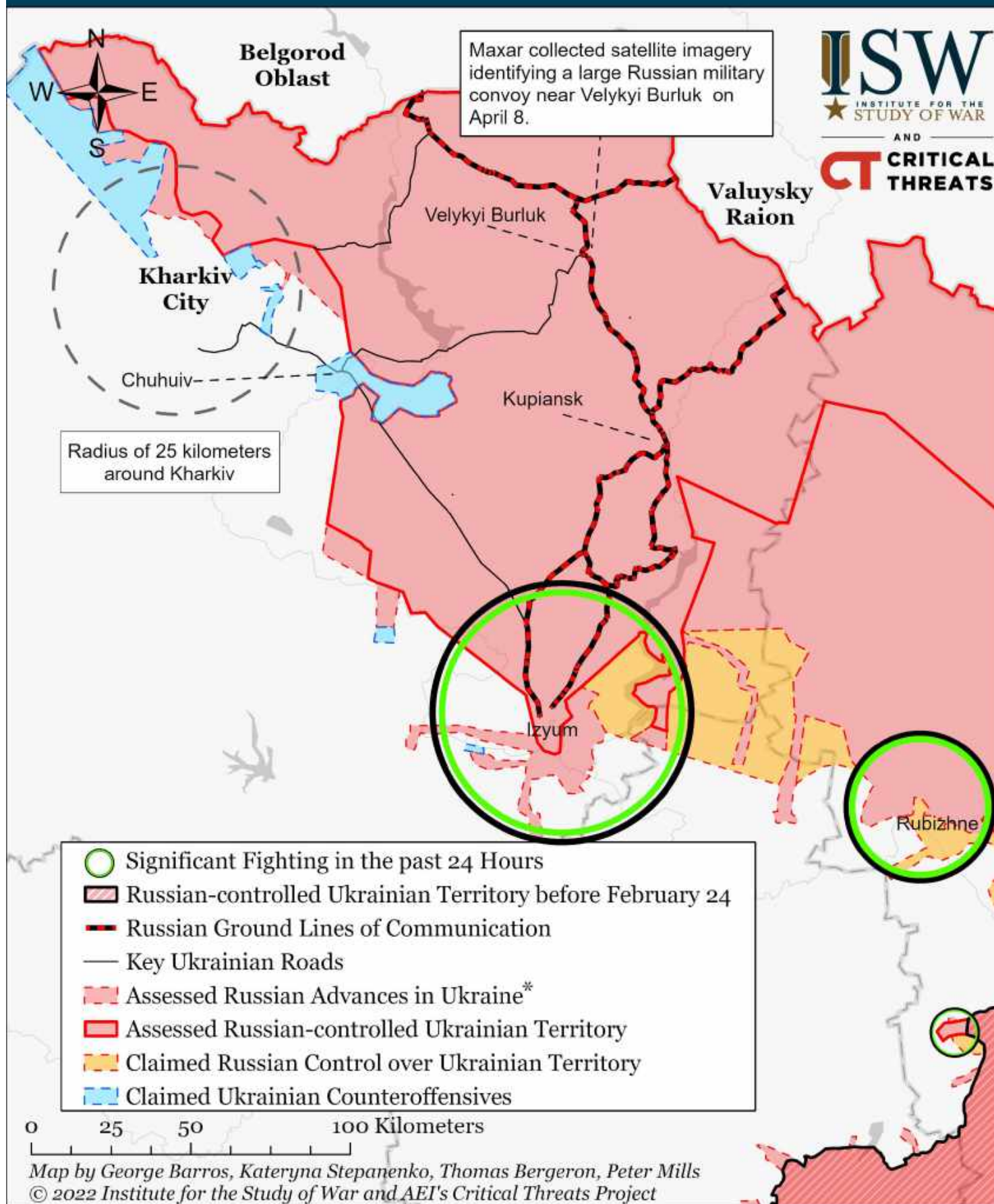
* Assessed Russian advances are areas where ISW assesses Russian forces have operated in or launched attacks against but do not control.

Assessed Control of Terrain Around Kharkiv as of April 27, 2022, 3:00 PM ET



* Assessed Russian advances are areas where ISW assesses Russian forces have operated in or launched attacks against but do not control.

Assessed Control of Terrain Around Kharkiv as of April 26, 2022, 3:00 PM ET



* Assessed Russian advances are areas where ISW assesses Russian forces have operated in or launched attacks against but do not control.

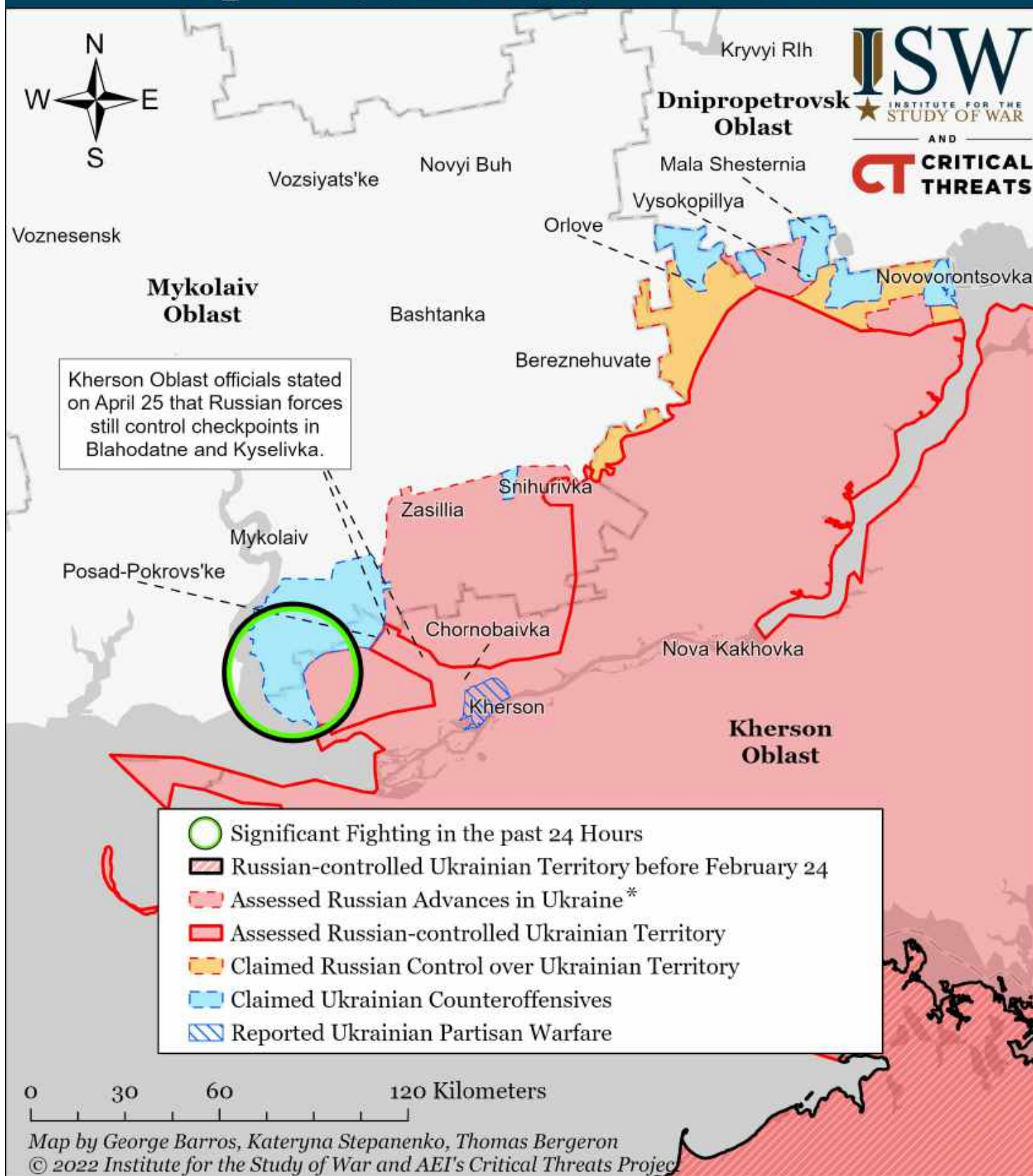
Assessed Control of Terrain Around Kharkiv as of April 25, 2022, 3:00 PM ET



* Assessed Russian advances are areas where ISW assesses Russian forces have operated in or launched attacks against but do not control.

Note: We expanded Ukrainian counteroffensives in Malynivka, Karasivka, and Korobochkino, Kharkiv Oblast, based on observing Russian artillery attacks on April 25. Ukrainian forces likely recaptured these settlements on a prior date, even though ISW only acquired enough evidence to change the map on April 25.

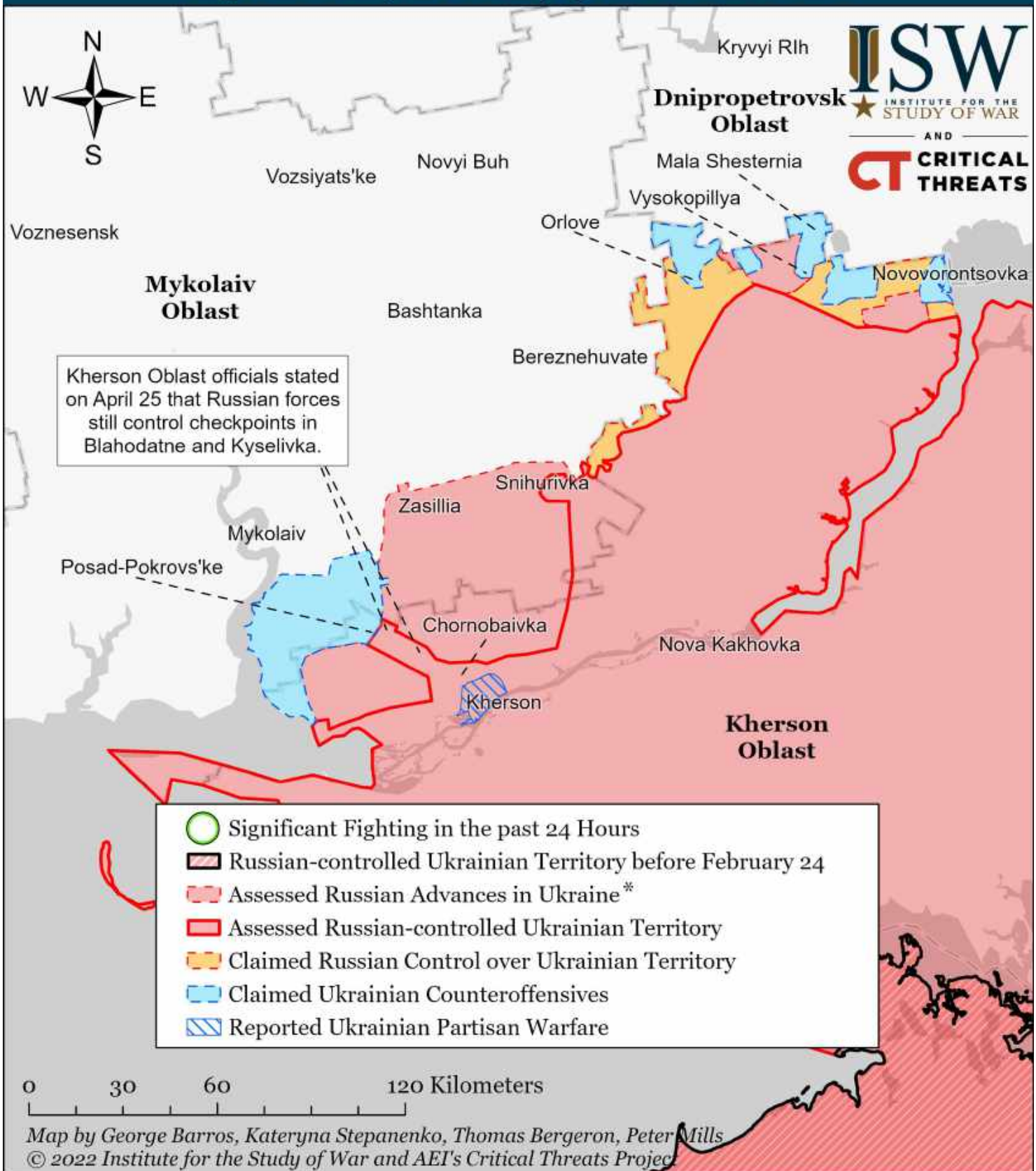
Assessed Control of Terrain Around Kherson and Mykolaiv as of April 27, 2022, 3:00 PM ET



* Assessed Russian advances are areas where ISW assesses Russian forces have operated in or launched attacks against but do not control.

Note: Ukrainian forces claimed to have recaptured five unspecified settlements in Mykolaiv Oblast on April 24 and eight unspecified settlements in Kherson Oblast on April 23. We expanded Ukrainian counteroffensives to Shyroke, Novopetrivka, and Lyubino in Mykolaiv Oblast based on official reports made on April 27. ISW will update our maps once open sources name the rest of the liberated settlements.

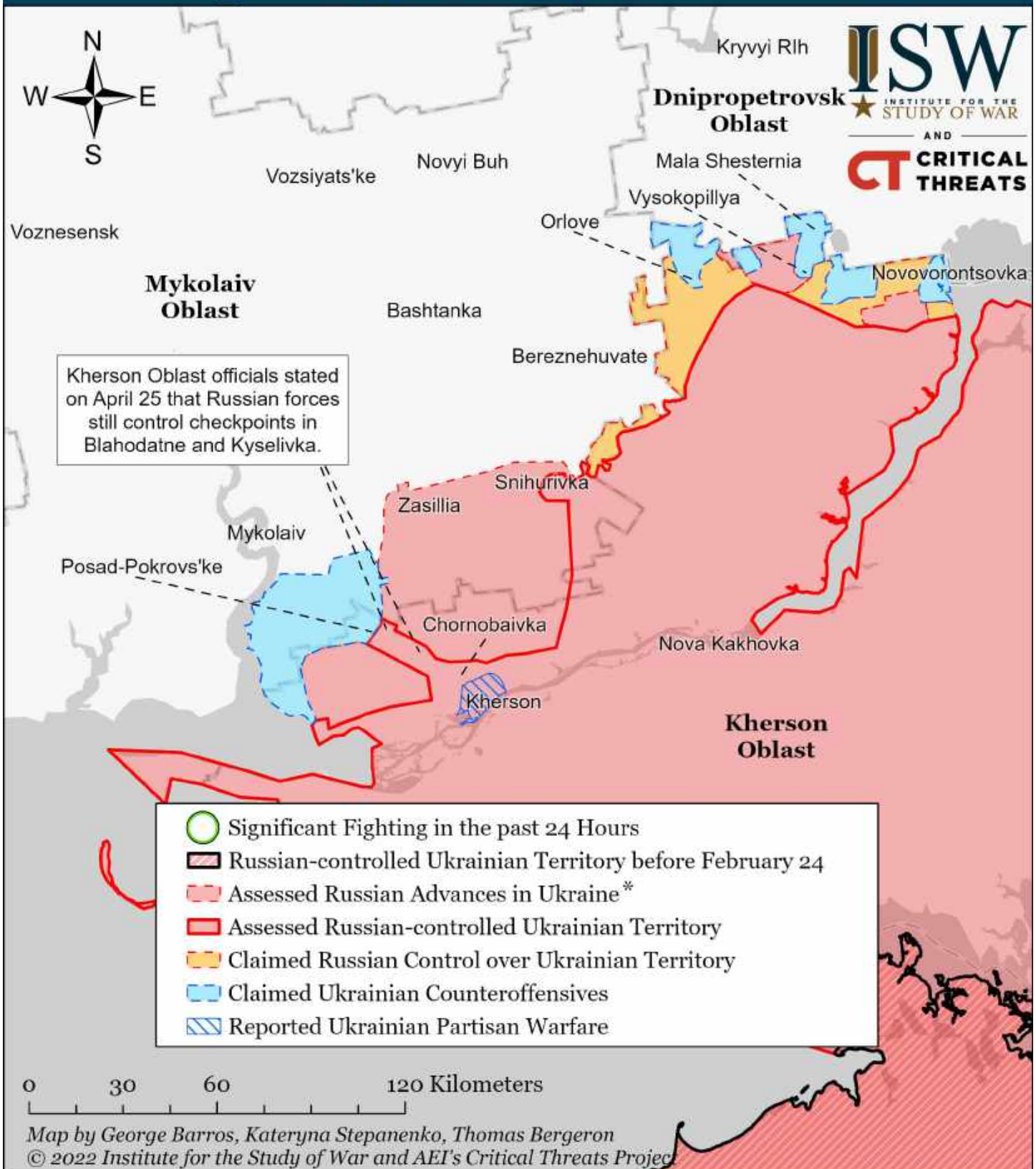
Assessed Control of Terrain Around Kherson and Mykolaiv as of April 26, 2022, 3:00 PM ET



* Assessed Russian advances are areas where ISW assesses Russian forces have operated in or launched attacks against but do not control.

Note: Ukrainian forces claimed to have recaptured five unspecified settlements in Mykolaiv Oblast on April 24 and eight unspecified settlements in Kherson Oblast on April 23. ISW will update our maps once open sources name the liberated settlements. The Kherson Oblast Administration stated that Russian forces maintained checkpoints in Blahodatne and Kyselivka as of April 25.

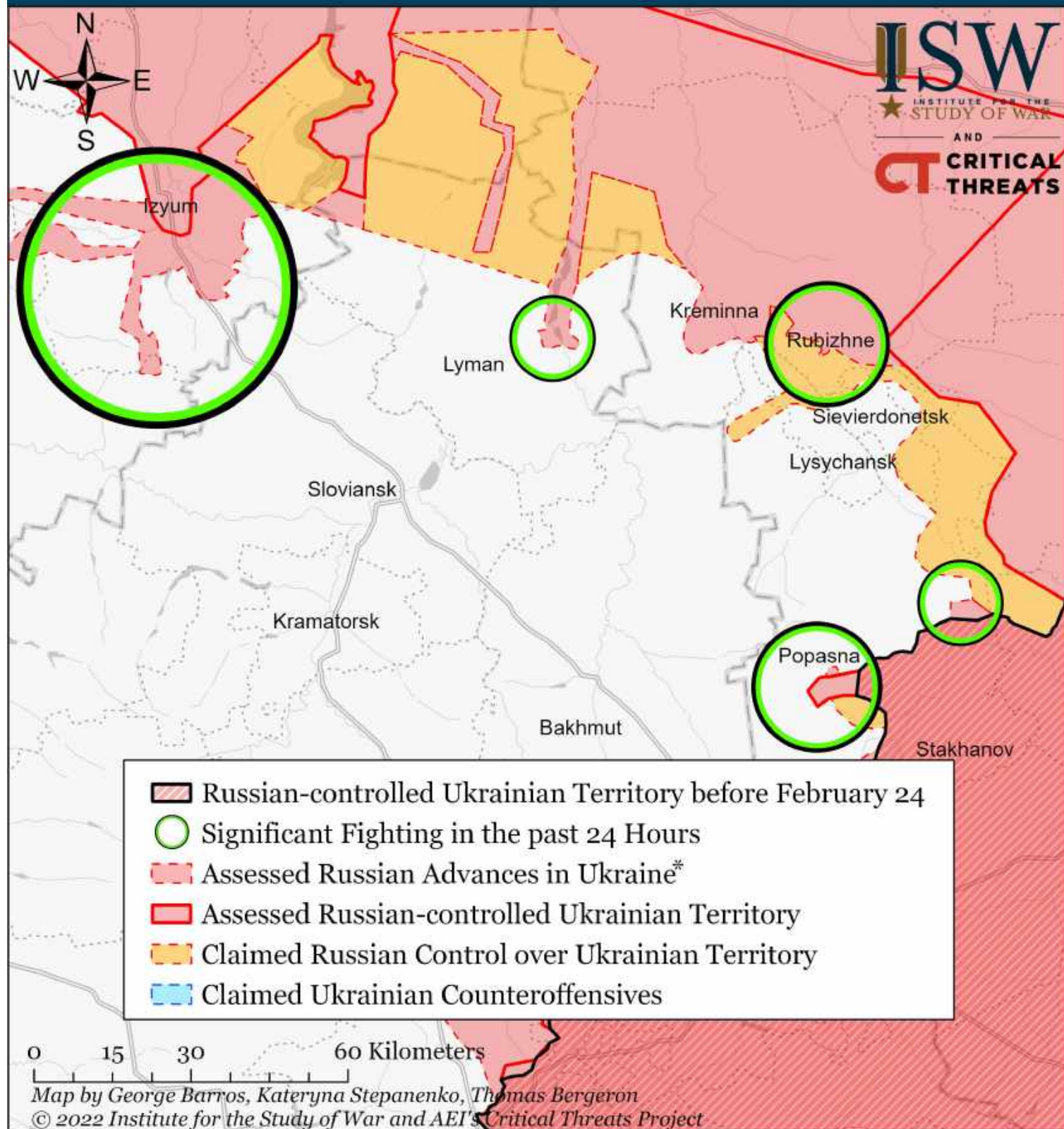
Assessed Control of Terrain Around Kherson and Mykolaiv as of April 25, 2022, 3:00 PM ET



* Assessed Russian advances are areas where ISW assesses Russian forces have operated in or launched attacks against but do not control.

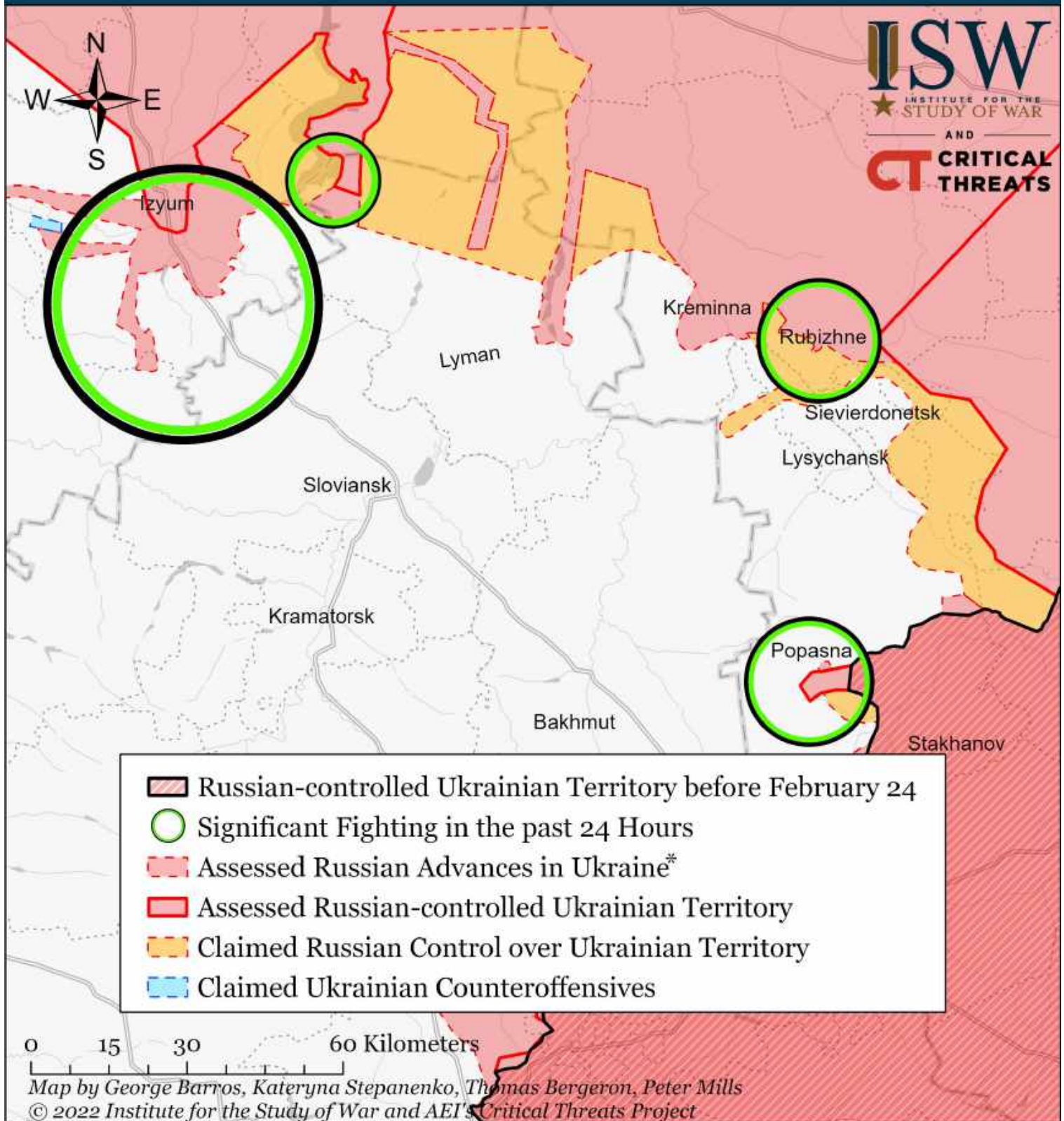
Note: Ukrainian forces claimed to have recaptured five unspecified settlements in Mykolaiv Oblast on April 24 and eight unspecified settlements in Kherson Oblast on April 23. ISW will update our maps once open sources name the liberated settlements. The Kherson Oblast Administration stated that Russian forces maintained checkpoints in Blahodatne and Kyselivka as of April 25. We expanded the Ukrainian counteroffensive in Mykolaivka, Mykolaiv Oblast, based on the Ukrainian General Staff report from April 25, but Ukrainian forces could have secured this settlement at a prior date.

Assessed Control of Terrain Around Luhansk as of April 27, 2022, 3:00 ET



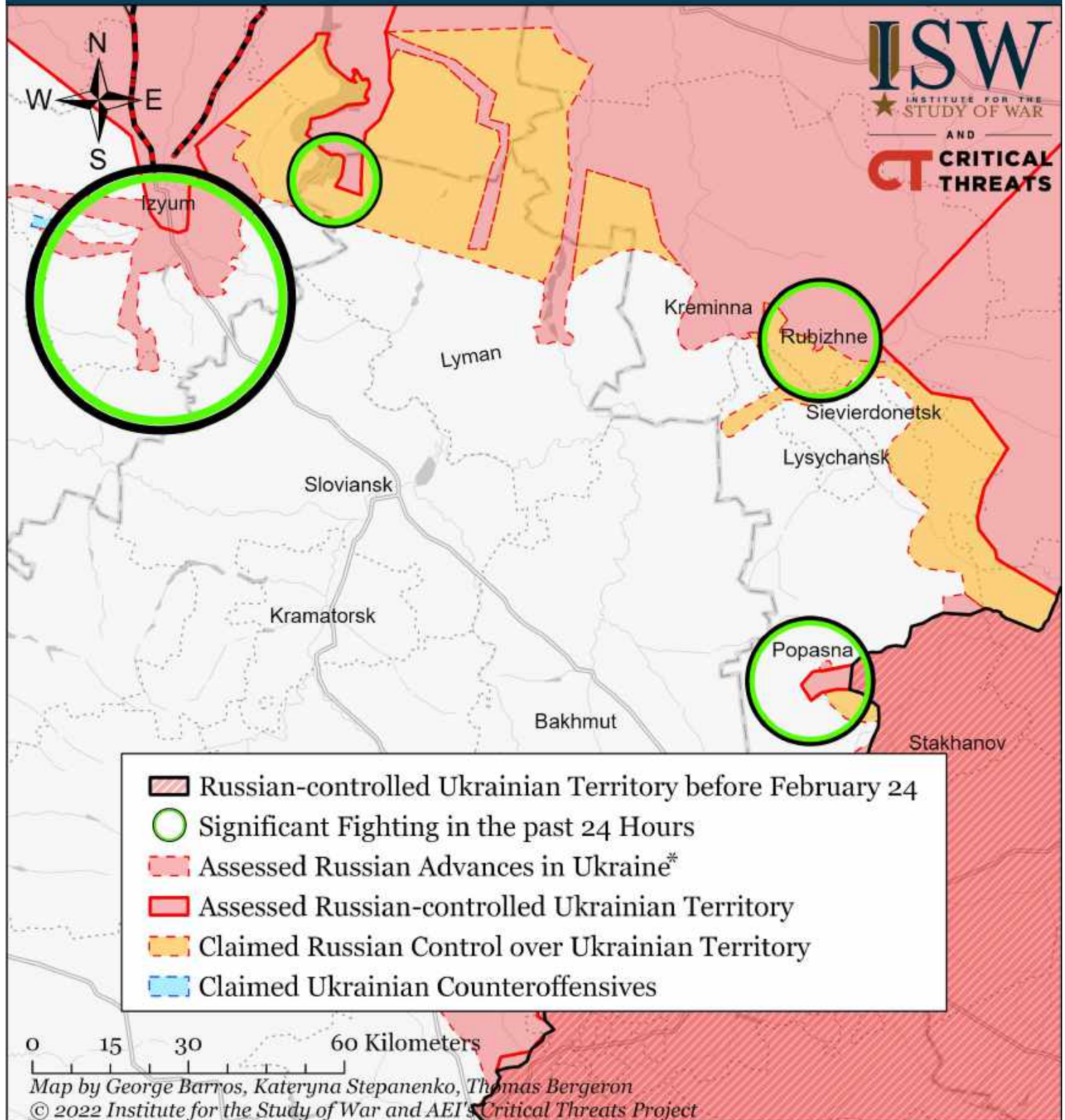
* Assessed Russian advances are areas where ISW assesses Russian forces have operated in or launched attacks against but do not control.

Assessed Control of Terrain Around Luhansk as of April 26, 2022, 3:00 ET



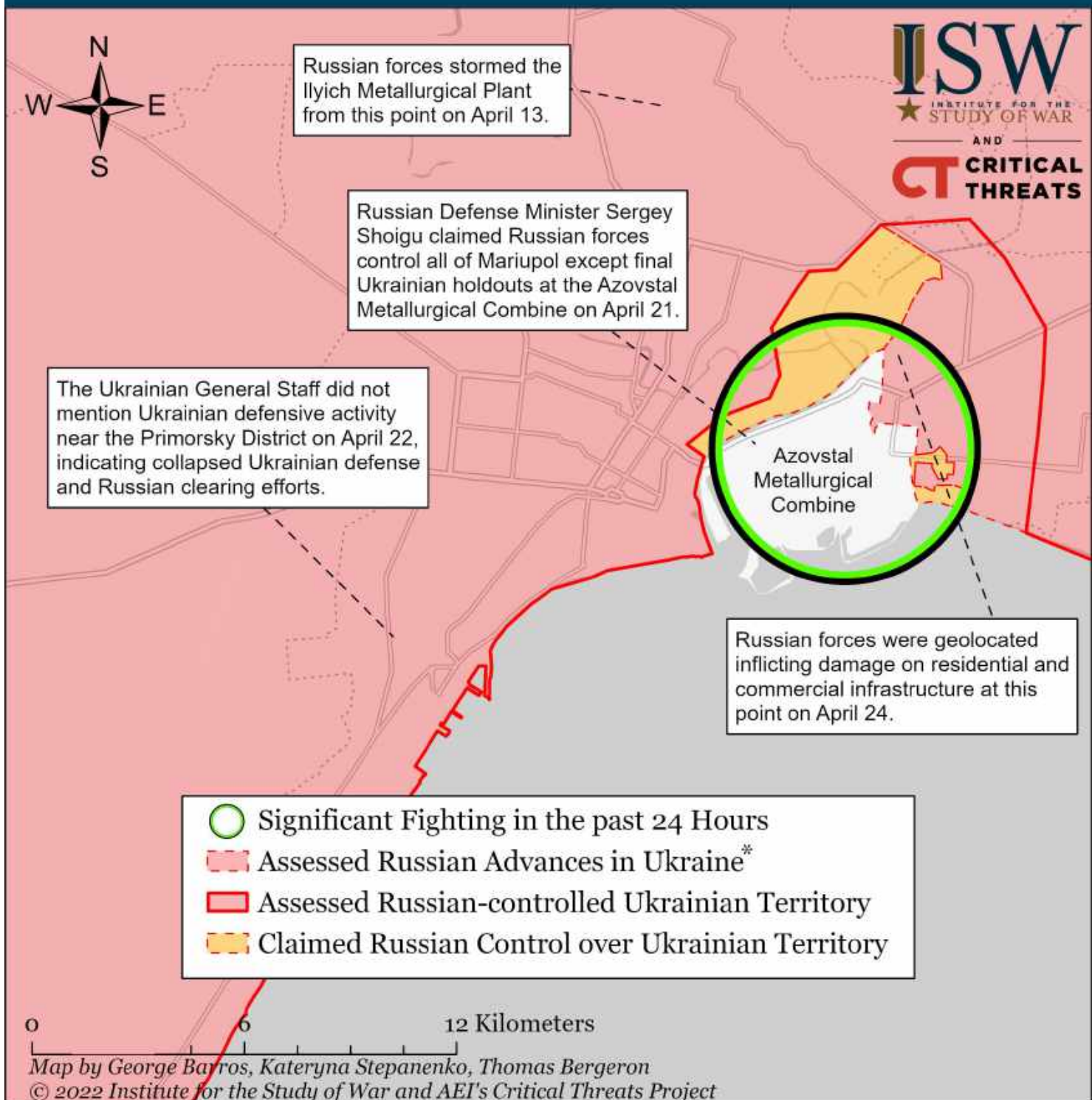
* Assessed Russian advances are areas where ISW assesses Russian forces have operated in or launched attacks against but do not control.

Assessed Control of Terrain Around Luhansk as of April 25, 2022, 3:00 ET



* Assessed Russian advances are areas where ISW assesses Russian forces have operated in or launched attacks against but do not control.

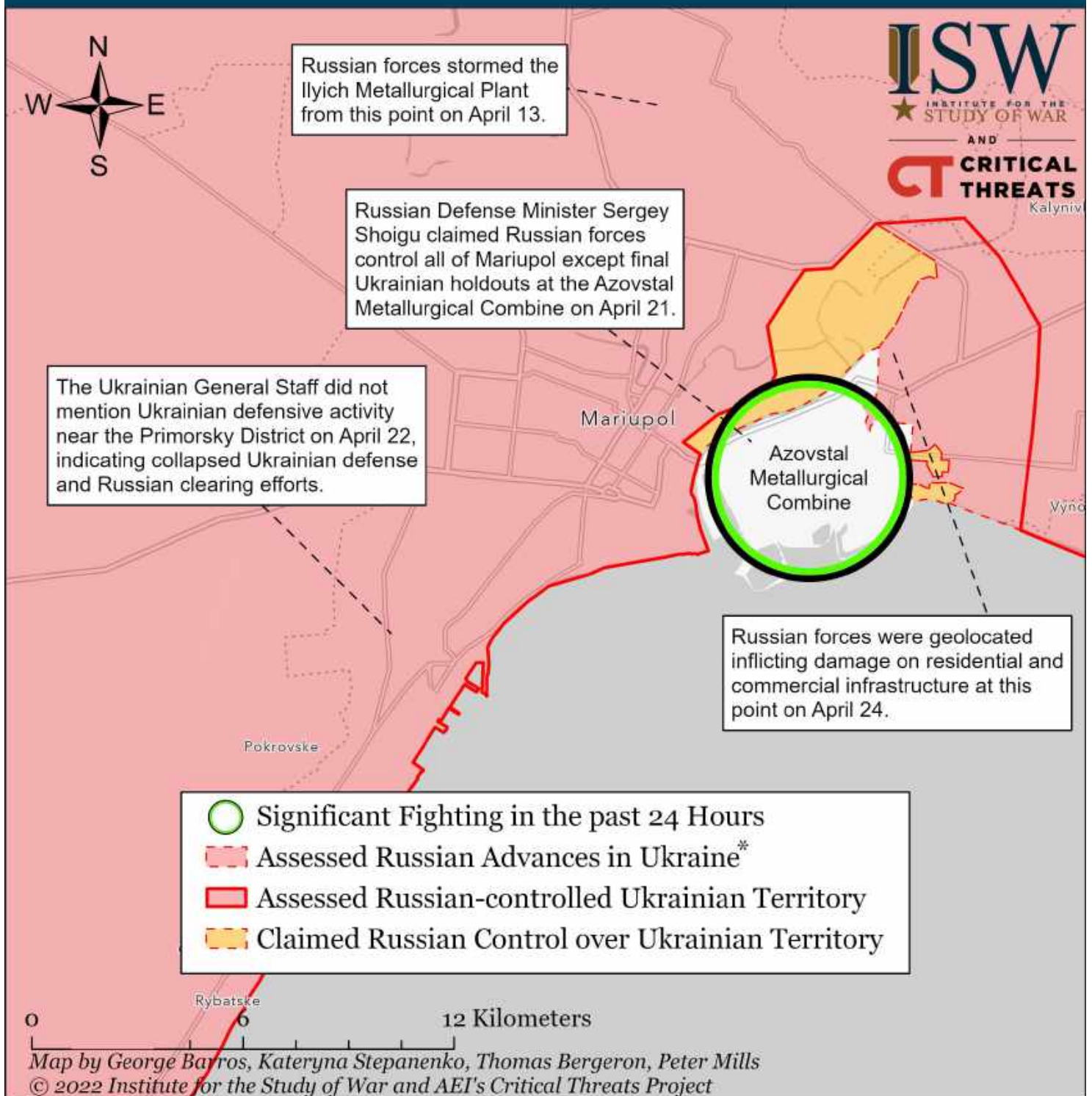
Assessed Control of Terrain Around Mariupol as of April 27, 2022, 3:00 ET



The Kremlin declared victory in Mariupol on April 21 after capturing the city besides Ukrainian holdouts in the encircled Azovstal Metallurgical Combine. Russian forces continued ground assaults on remaining Ukrainian defenders at Azovstal on April 27. Ukrainian forces engaged in small-scale street fights in the Left Bank District outside Azovstal on April 27. Russian war reporters filmed some Russian elements redeploying from Mariupol northward on April 24 and April 25. The Ukrainian General Staff notably did not mention Ukrainian defensive activity near the port of Mariupol or Primorsky District on April 22, indicating Russian clearing efforts. The Kremlin will spin the (still incomplete) capture of Mariupol into a major victory in Ukraine to compensate for stalled or failed Russian offensives elsewhere.

* Assessed Russian advances are areas where ISW assesses Russian forces have operated in or launched attacks against but do not control.

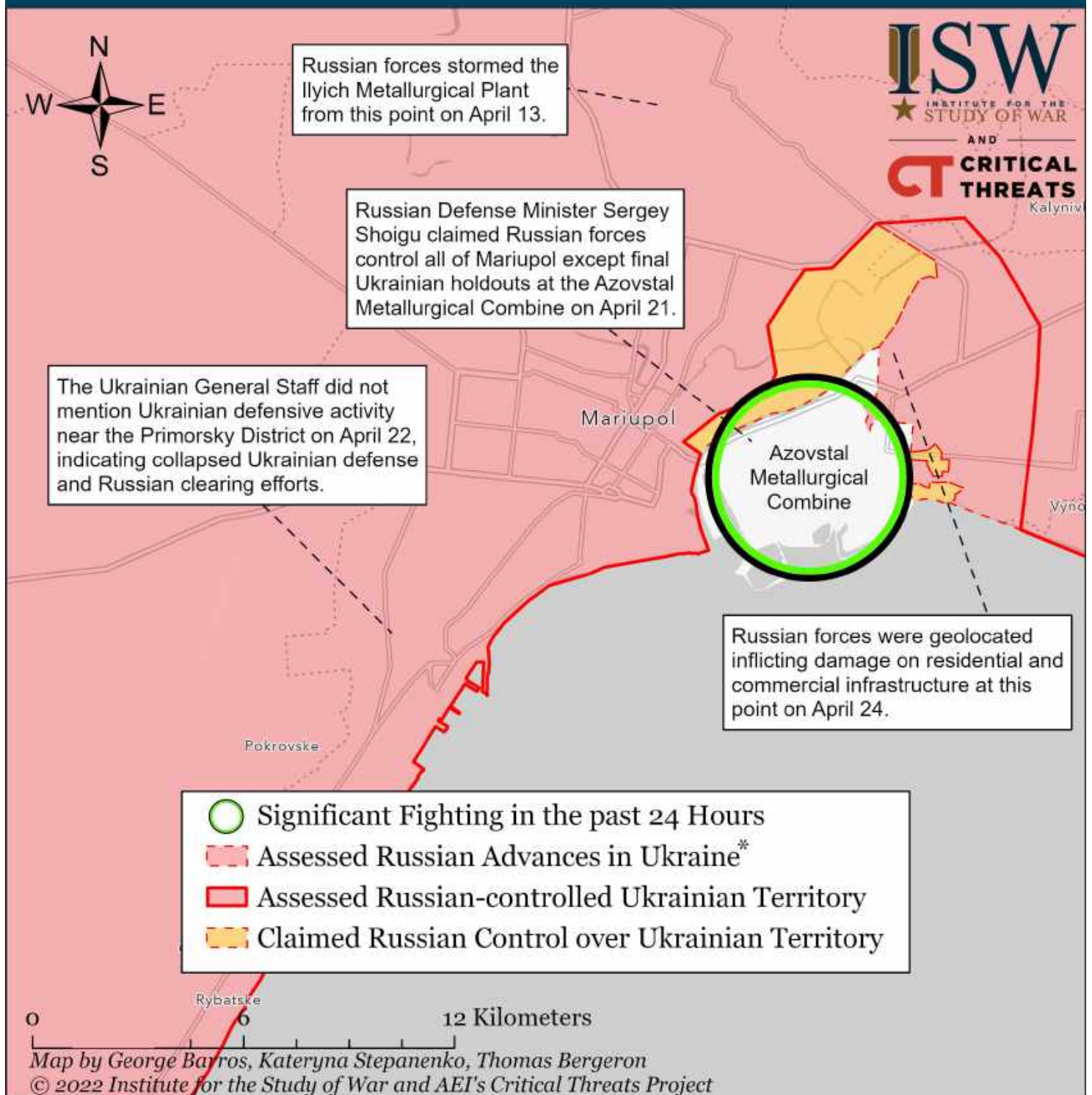
Assessed Control of Terrain Around Mariupol as of April 26, 2022, 3:00 ET



The Kremlin declared victory in Mariupol on April 21 after capturing the city besides Ukrainian holdouts in the encircled Azovstal Metallurgical Combine. Russian forces continued ground assaults on remaining Ukrainian defenders at Azovstal on April 26. Russian war reporters filmed some Russian elements redeploying from Mariupol northward on April 24 and April 25. The Ukrainian General Staff notably did not mention Ukrainian defensive activity near the port of Mariupol or Primorsky District on April 22, indicating Russian clearing efforts. The Kremlin will spin the (still incomplete) capture of Mariupol into a major victory in Ukraine to compensate for stalled or failed Russian offensives elsewhere.

* Assessed Russian advances are areas where ISW assesses Russian forces have operated in or launched attacks against but do not control.

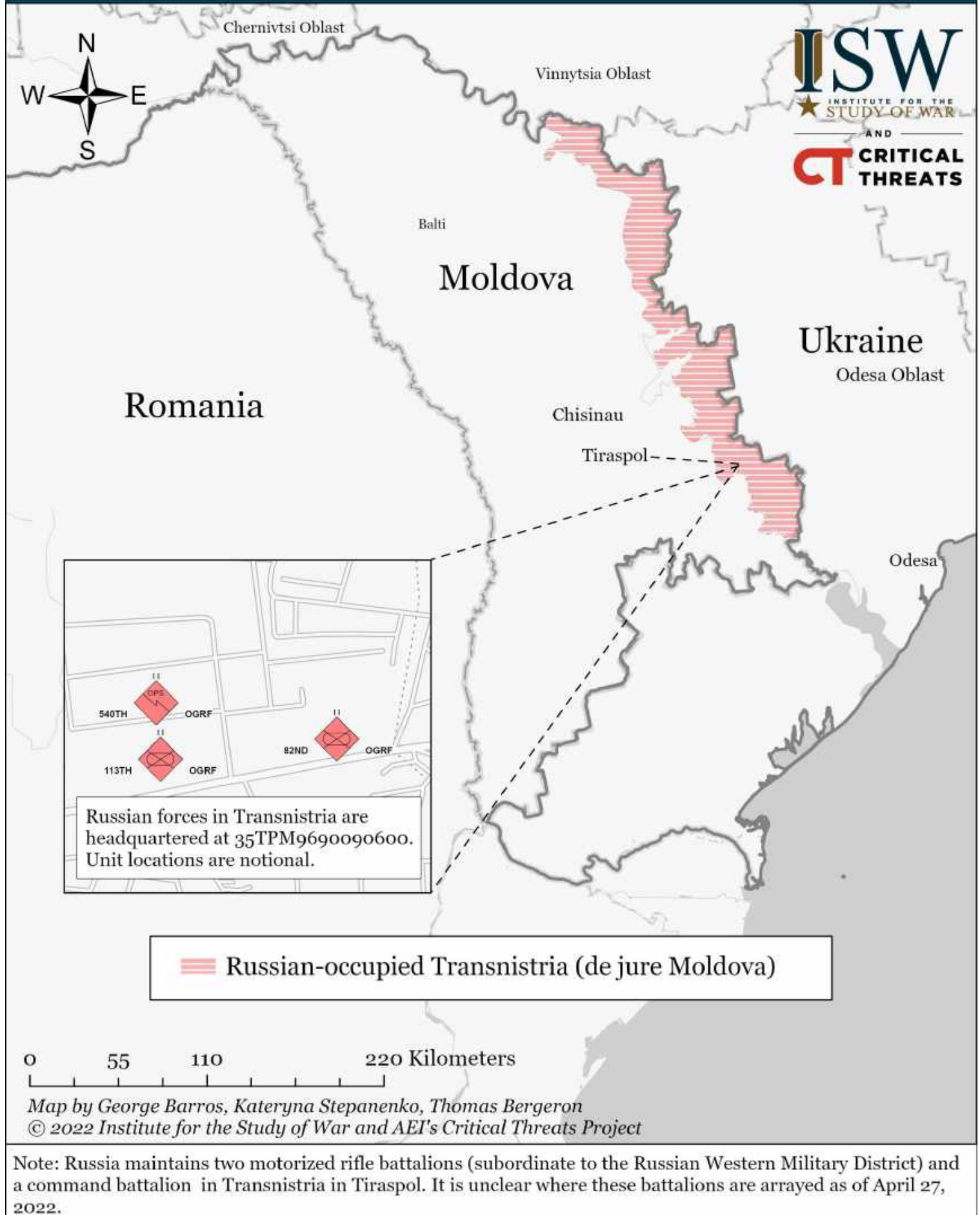
Assessed Control of Terrain Around Mariupol as of April 25, 2022, 3:00 ET



The Kremlin declared victory in Mariupol on April 21 after capturing the city besides Ukrainian holdouts in the encircled Azovstal Metallurgical Combine. Russian forces resumed ground assaults on remaining Ukrainian defenders at Azovstal on April 25. Russian war reporters filmed some Russian elements redeploying from Mariupol northward on April 24 and April 25. The Ukrainian General Staff notably did not mention Ukrainian defensive activity near the port of Mariupol or Primorsky District on April 22, indicating Russian clearing efforts. The Kremlin will spin the (still incomplete) capture of Mariupol into a major victory in Ukraine to compensate for stalled or failed Russian offensives elsewhere.

* Assessed Russian advances are areas where ISW assesses Russian forces have operated in or launched attacks against but do not control.

Moldova Situational Map as of April 27, 2022, 3:00 PM ET



Moldova Situational Map as of April 26, 2022, 3:00 PM ET

