

Assessed Control of Terrain in Ukraine and Main Russian Maneuver Axes as of April 30, 2022, 3:00 PM ET



Map by George Barros, Kateryna Stepanenko, Thomas Bergeron
© 2022 Institute for the Study of War and AEI's Critical Threats Project

* Assessed Russian advances are areas where ISW assesses Russian forces have operated in or launched attacks against but do not control.

Assessed Control of Terrain in Ukraine and Main Russian Maneuver Axes as of April 29, 2022, 3:00 PM ET



Map by George Barros, Kateryna Stepanenko, Thomas Bergeron
© 2022 Institute for the Study of War and AEI's Critical Threats Project

* Assessed Russian advances are areas where ISW assesses Russian forces have operated in or launched attacks against but do not control.

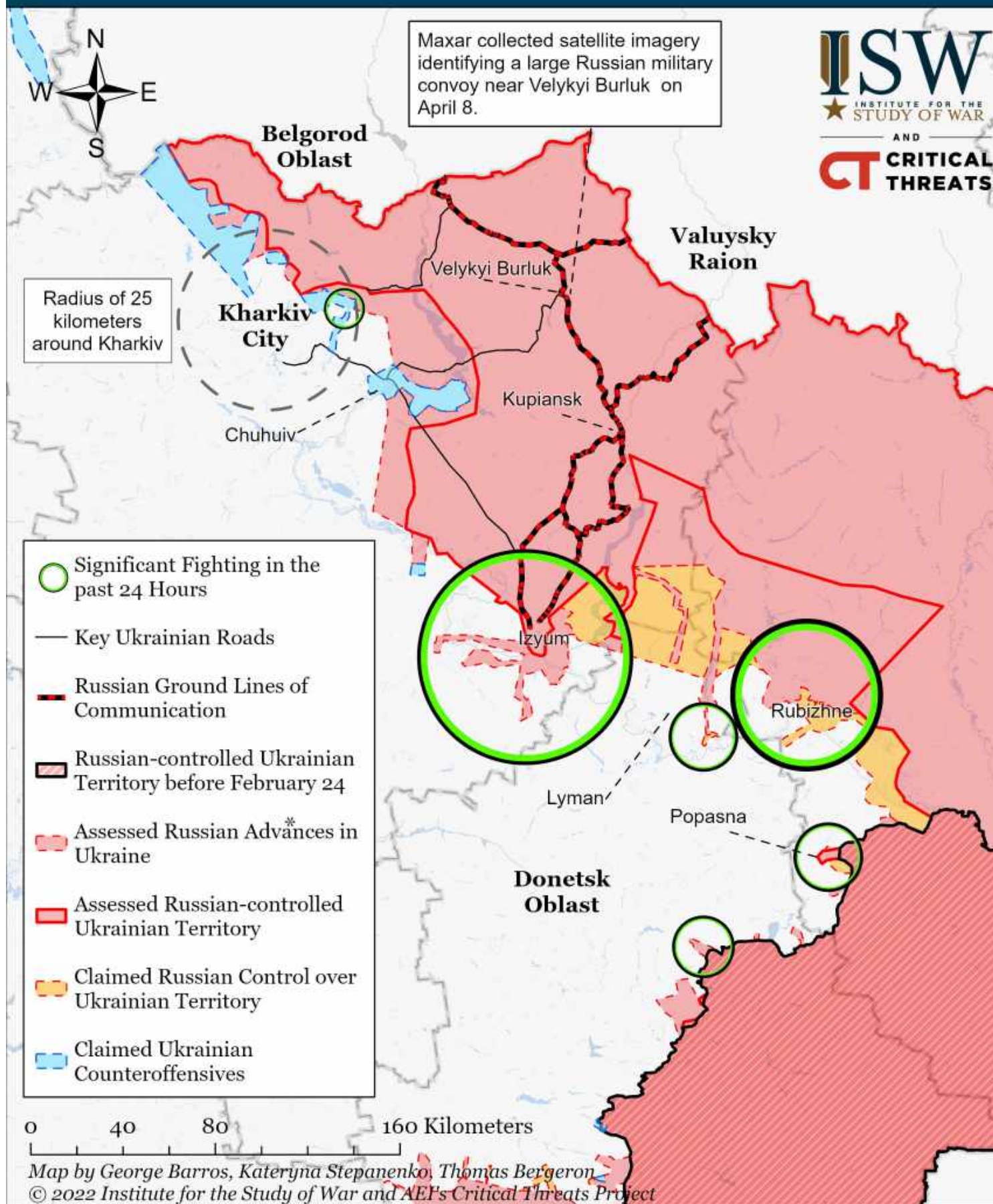
Assessed Control of Terrain in Ukraine and Main Russian Maneuver Axes as of April 28, 2022, 3:00 PM ET



Map by George Barros, Kateryna Stepanenko, Thomas Bergeron
© 2022 Institute for the Study of War and AEI's Critical Threats Project

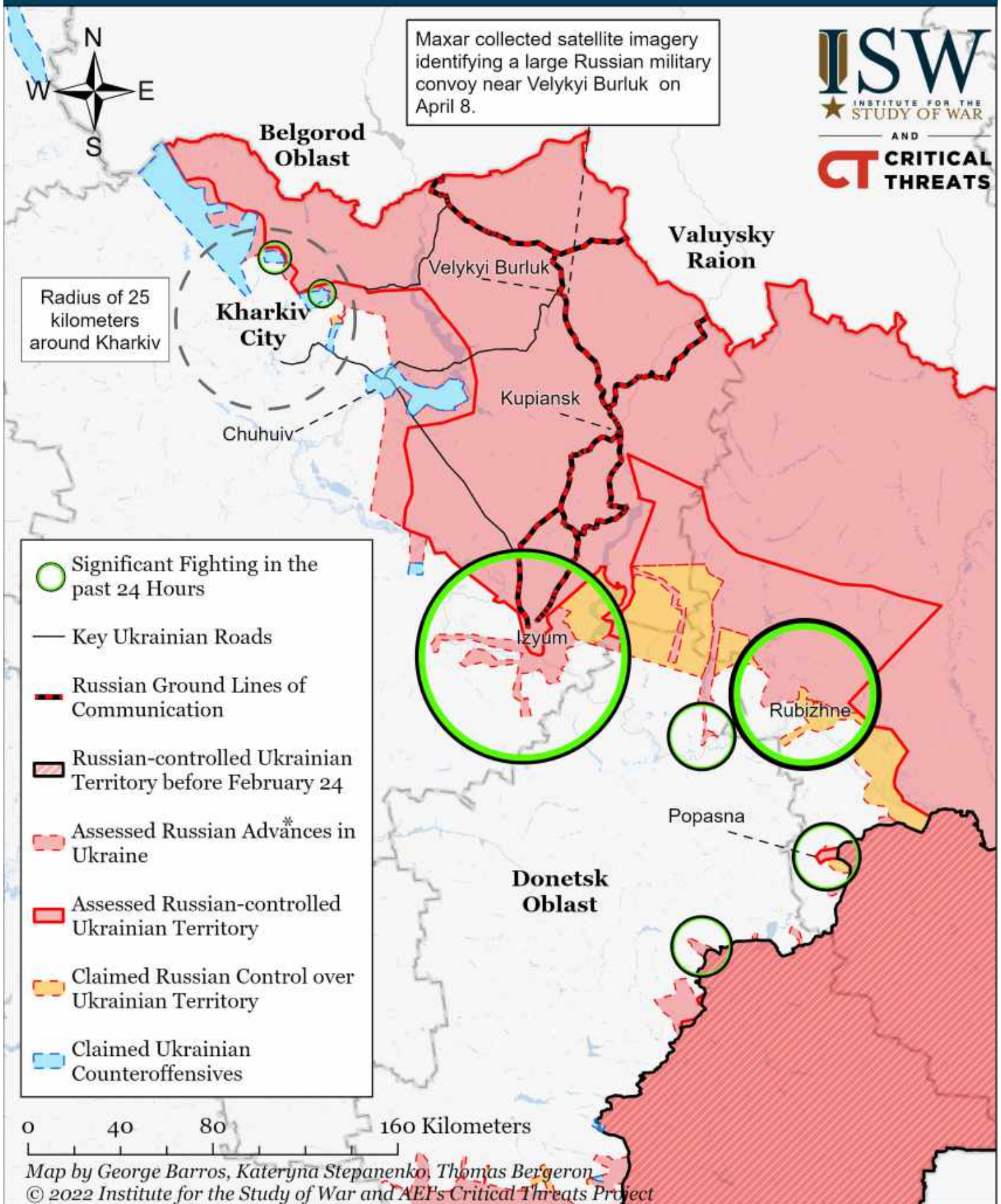
* Assessed Russian advances are areas where ISW assesses Russian forces have operated in or launched attacks against but do not control.

Assessed Control of Terrain Around Kharkiv as of April 30, 2022, 3:00 PM ET



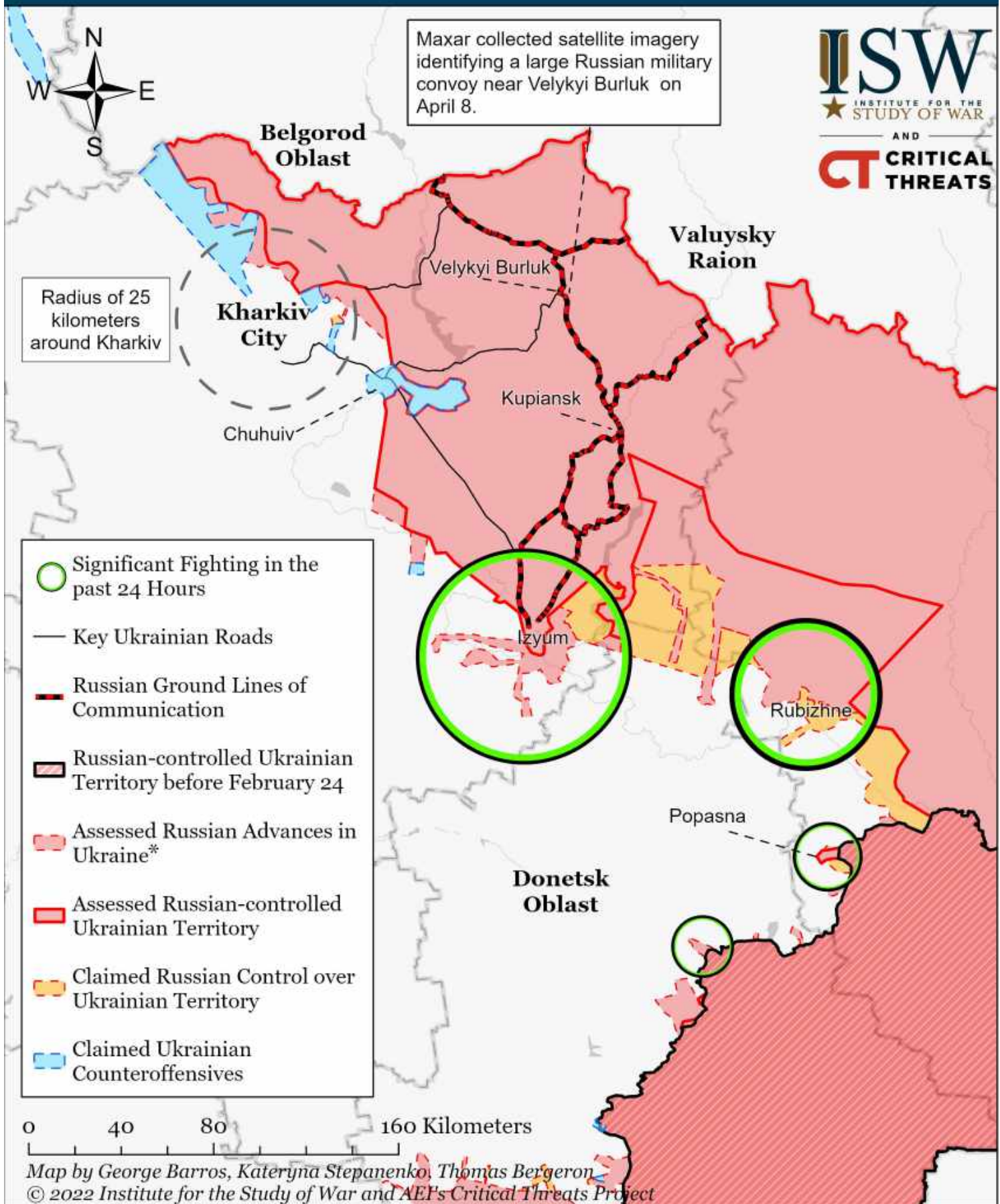
* Assessed Russian advances are areas where ISW assesses Russian forces have operated in or launched attacks against but do not control.

Assessed Control of Terrain Around Kharkiv as of April 29, 2022, 3:00 PM ET



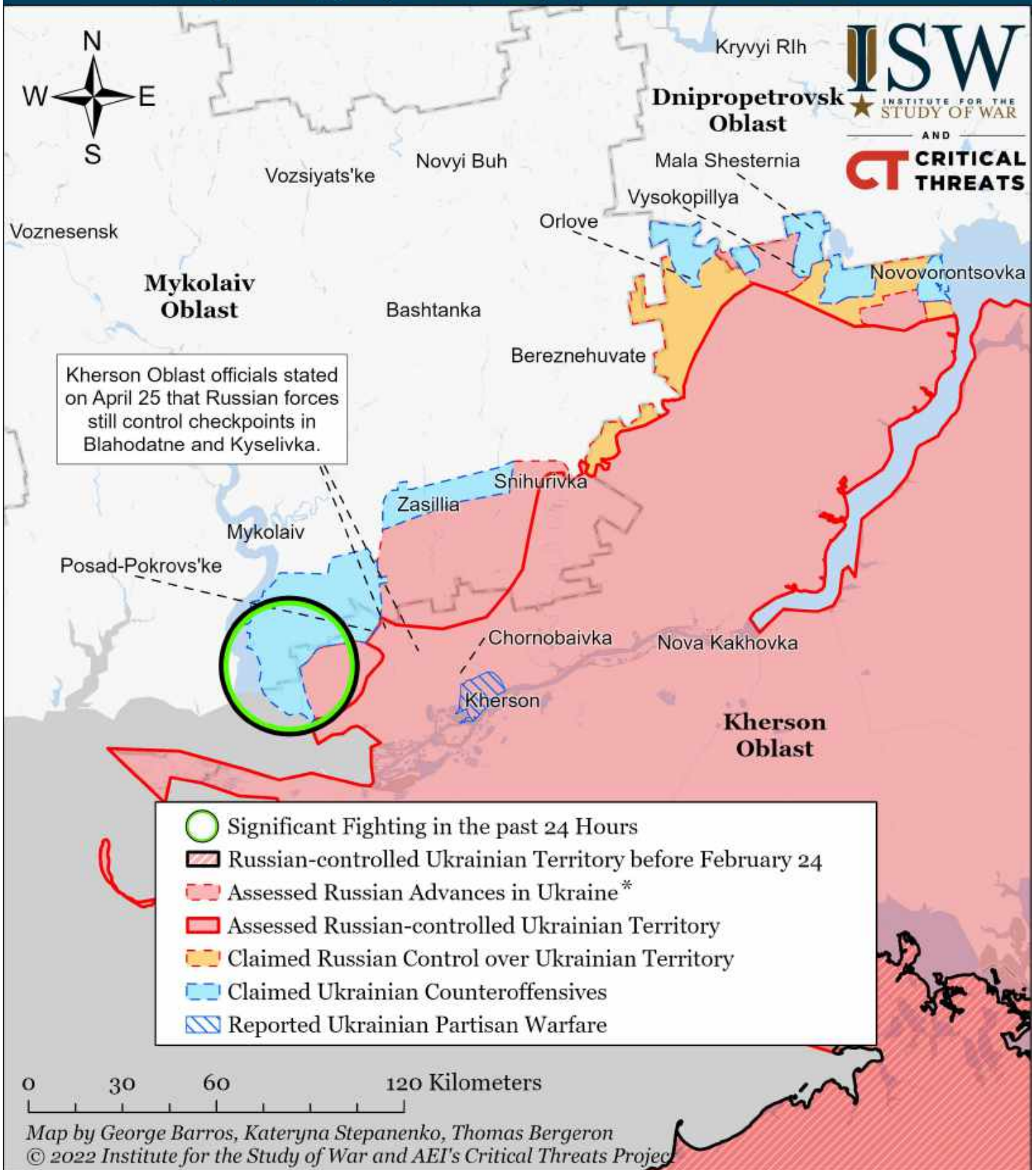
* Assessed Russian advances are areas where ISW assesses Russian forces have operated in or launched attacks against but do not control.

Assessed Control of Terrain Around Kharkiv as of April 28, 2022, 3:00 PM ET



* Assessed Russian advances are areas where ISW assesses Russian forces have operated in or launched attacks against but do not control.

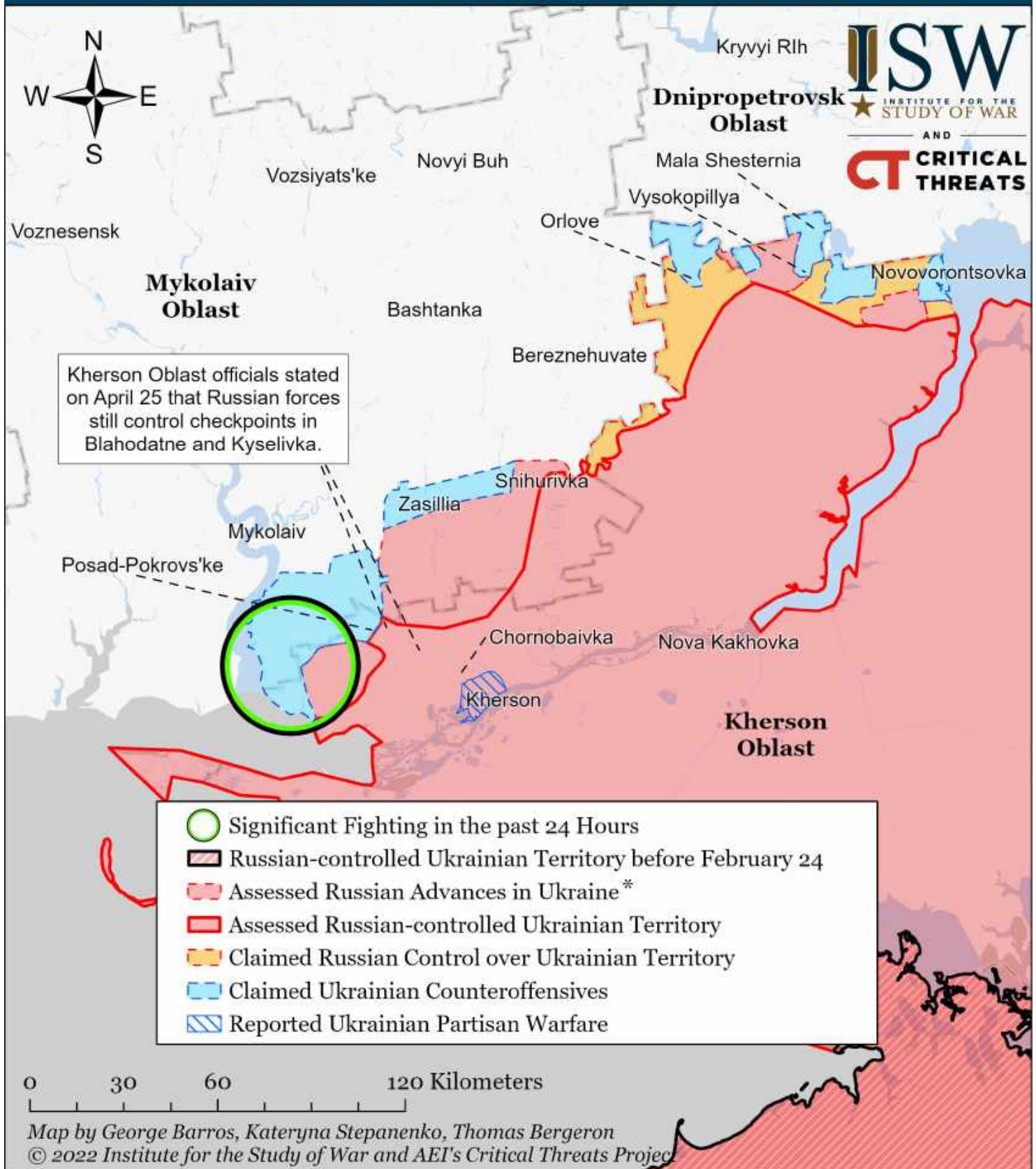
Assessed Control of Terrain Around Kherson and Mykolaiv as of April 30, 2022, 3:00 PM ET



* Assessed Russian advances are areas where ISW assesses Russian forces have operated in or launched attacks against but do not control.

Note: We recoded assessed Russian advance west of Snihurivka from Chervone and Novopetrivka to Ukrainian counteroffensives given this territory likely had to be liberated to support the April 27 counteroffensive on Shyrokye, Novopetrivka, and Lyubin. ISW will update our maps once we can verify more data.

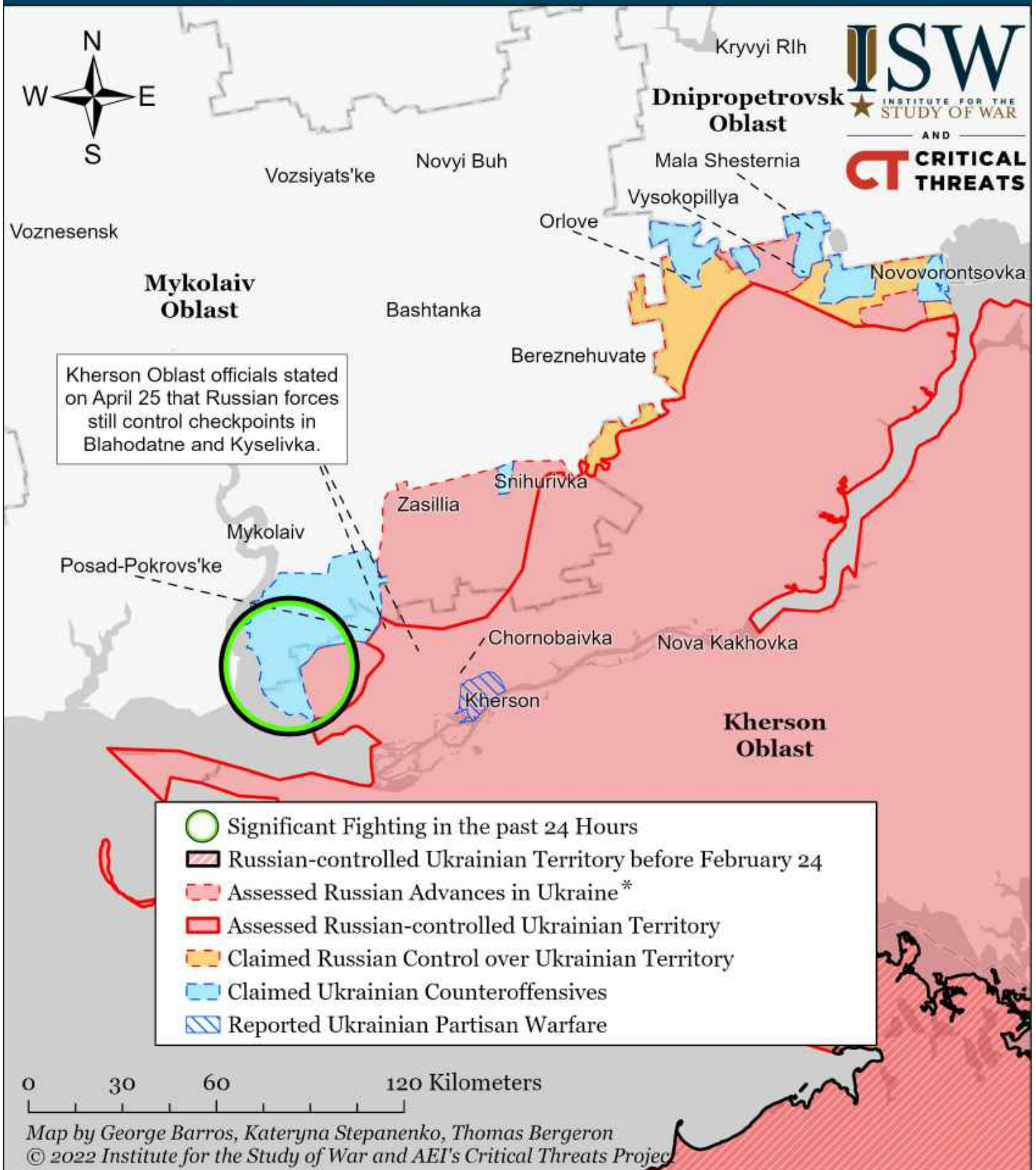
Assessed Control of Terrain Around Kherson and Mykolaiv as of April 29, 2022, 3:00 PM ET



* Assessed Russian advances are areas where ISW assesses Russian forces have operated in or launched attacks against but do not control.

Note: We recoded assessed Russian advance west of Snihurivka from Chervone and Novopetrivka to Ukrainian counteroffensives given this territory likely had to be liberated to support the April 27 counteroffensive on Shyrokye, Novopetrivka, and Lyubin. ISW will update our maps once we can verify more data.

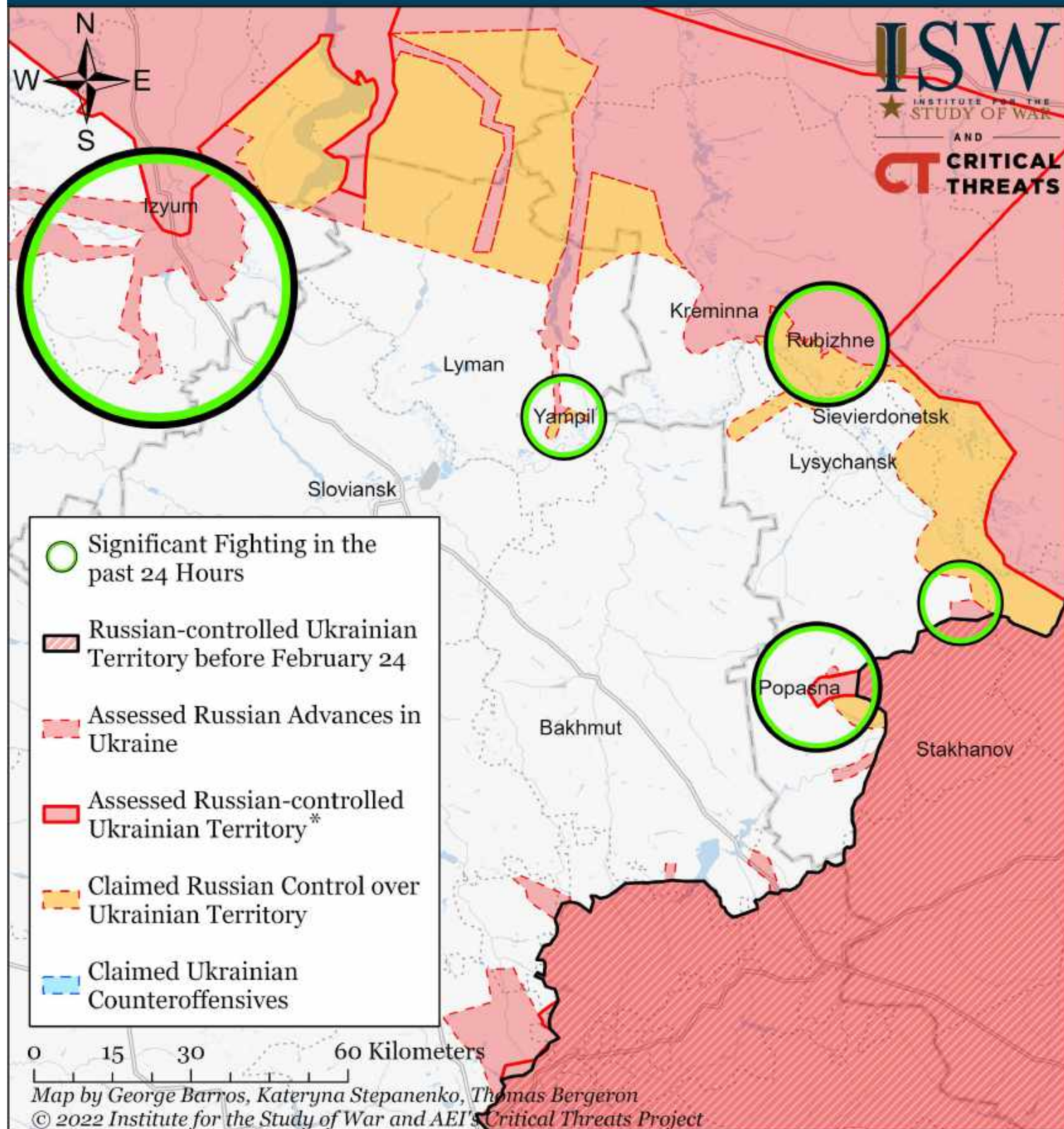
Assessed Control of Terrain Around Kherson and Mykolaiv as of April 28, 2022, 3:00 PM ET



* Assessed Russian advances are areas where ISW assesses Russian forces have operated in or launched attacks against but do not control.

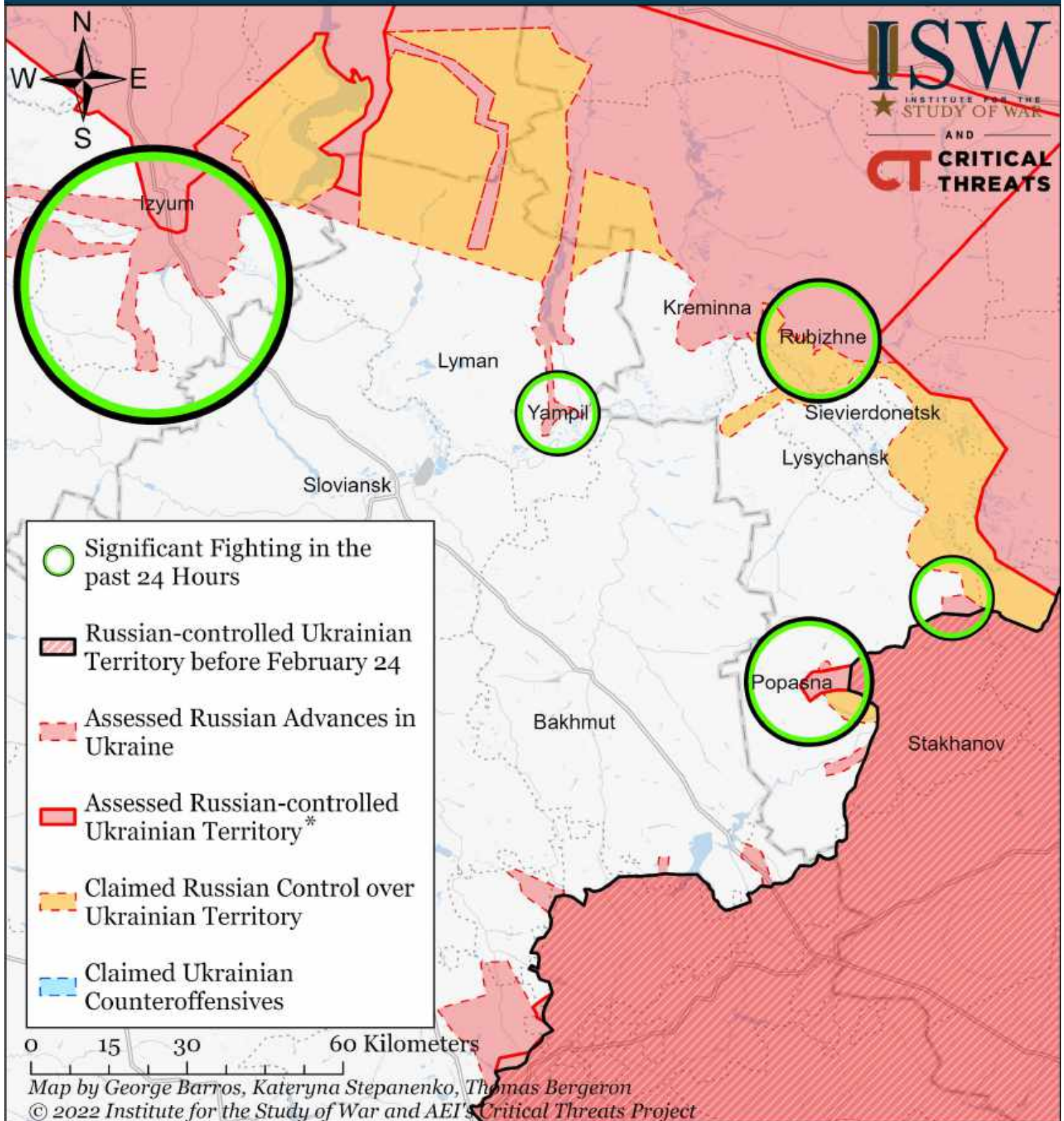
Note: Ukrainian forces claimed to have recaptured five unspecified settlements in Mykolaiv Oblast on April 24 and eight unspecified settlements in Kherson Oblast on April 23. We expanded Ukrainian counteroffensives to Shyroke, Novopetrivka, and Lyubino in Mykolaiv Oblast based on official reports made on April 27. ISW will update our maps once open sources name the rest of the liberated settlements.

Assessed Control of Terrain Around Luhansk as of April 30, 2022, 3:00 ET



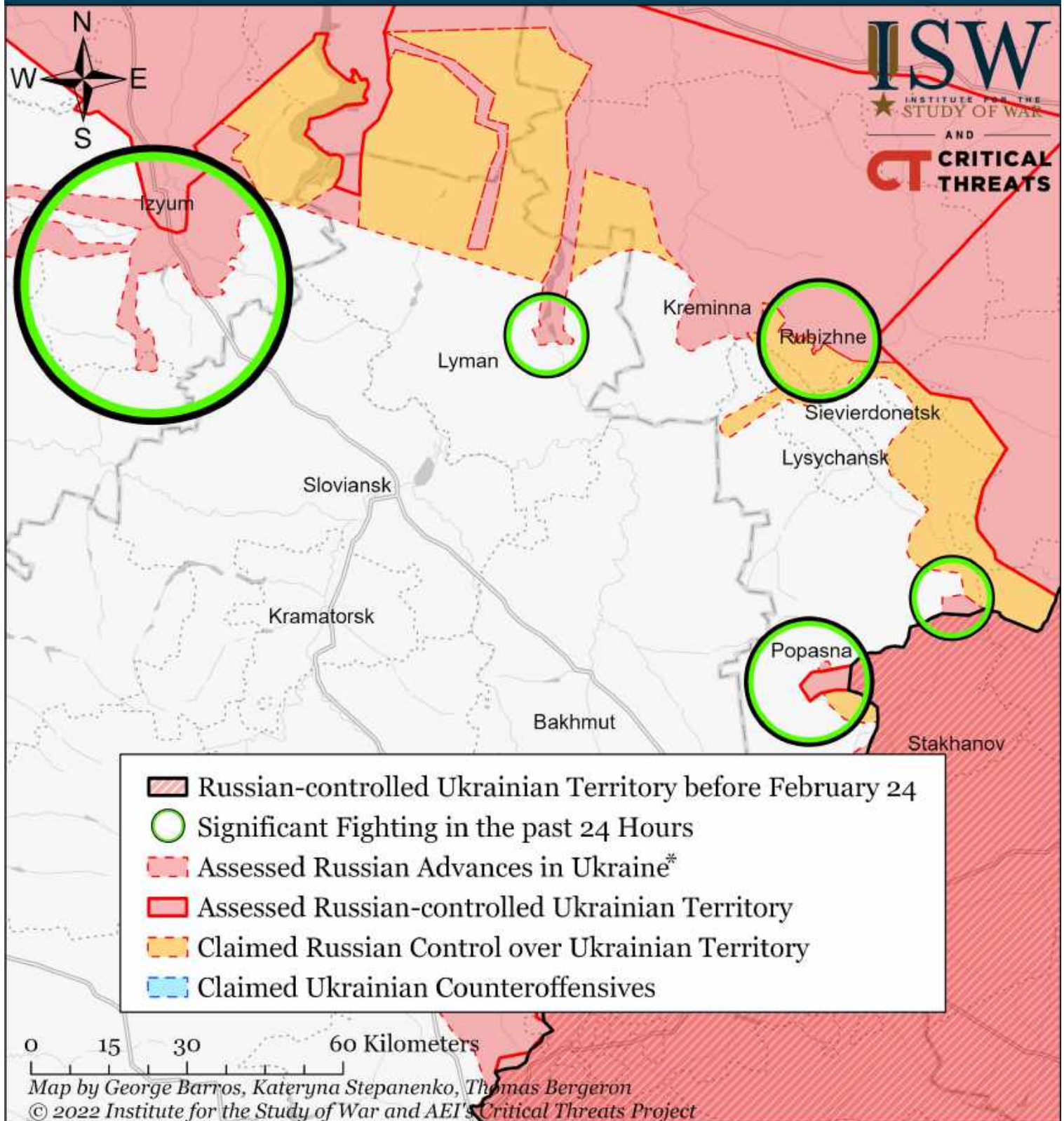
* Assessed Russian advances are areas where ISW assesses Russian forces have operated in or launched attacks against but do not control.

Assessed Control of Terrain Around Luhansk as of April 29, 2022, 3:00 ET



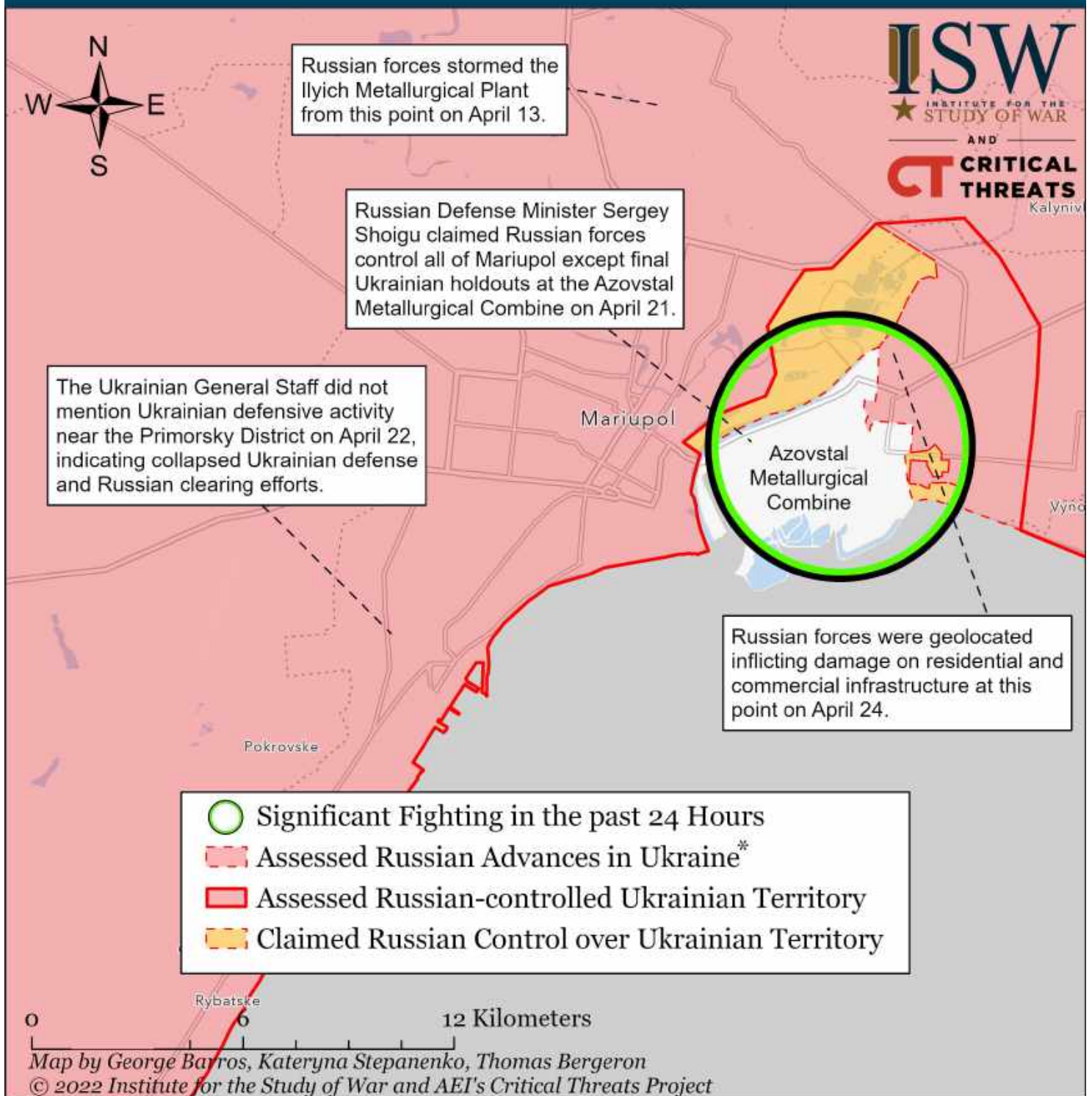
* Assessed Russian advances are areas where ISW assesses Russian forces have operated in or launched attacks against but do not control.

Assessed Control of Terrain Around Luhansk as of April 28, 2022, 3:00 ET



* Assessed Russian advances are areas where ISW assesses Russian forces have operated in or launched attacks against but do not control.

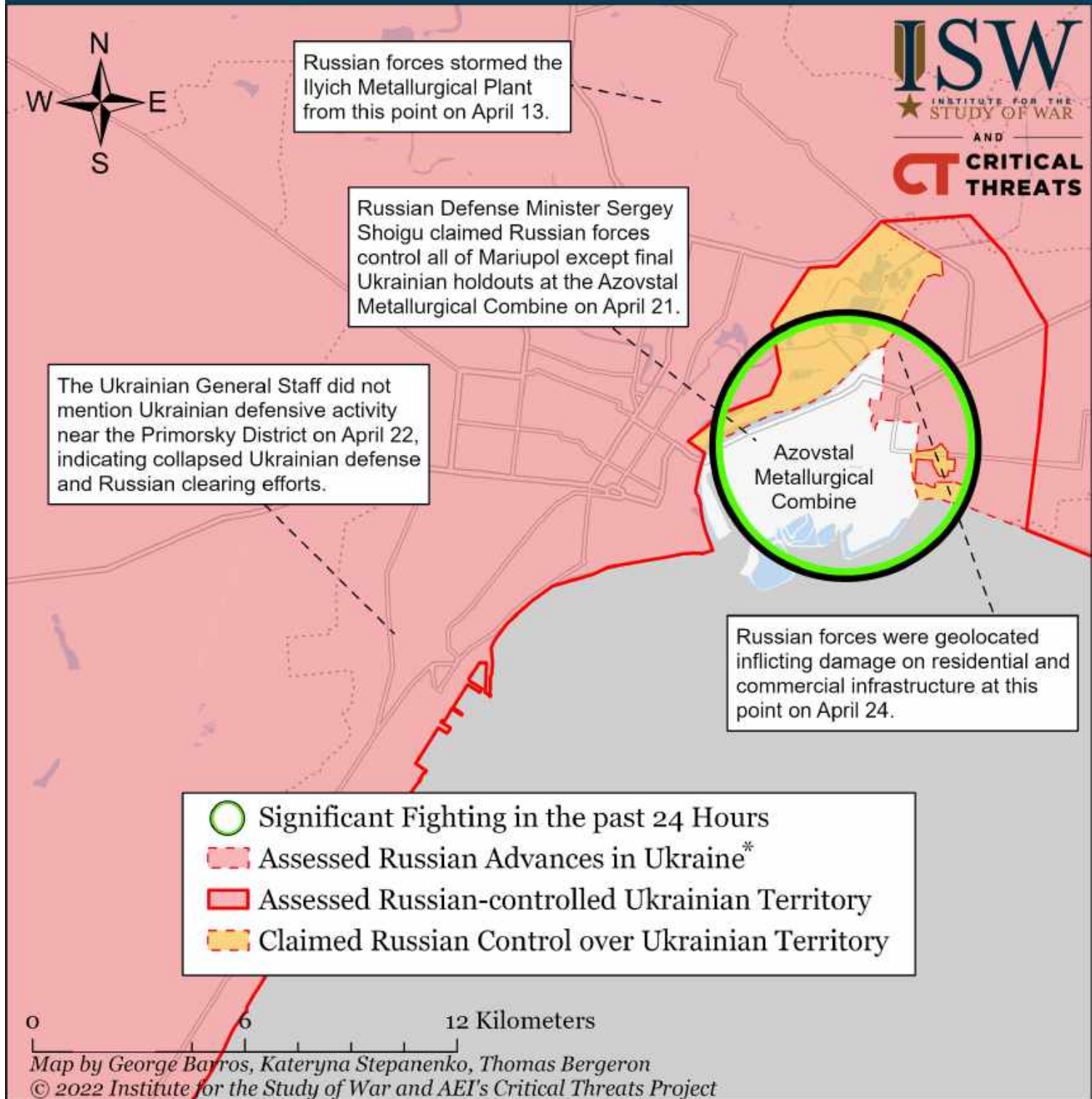
Assessed Control of Terrain Around Mariupol as of April 30, 2022, 3:00 ET



The Kremlin declared victory in Mariupol on April 21 after capturing the city besides Ukrainian holdouts in the encircled Azovstal Metallurgical Combine. Russian forces continued ground assaults on remaining Ukrainian defenders at Azovstal on April 27. Ukrainian forces engaged in small-scale street fights in the Left Bank District outside Azovstal on April 27. Russian war reporters filmed some Russian elements redeploying from Mariupol northward on April 24 and April 25. The Ukrainian General Staff notably did not mention Ukrainian defensive activity near the port of Mariupol or Primorsky District on April 22, indicating Russian clearing efforts. The Kremlin will spin the (still incomplete) capture of Mariupol into a major victory in Ukraine to compensate for stalled or failed Russian offensives elsewhere.

* Assessed Russian advances are areas where ISW assesses Russian forces have operated in or launched attacks against but do not control.

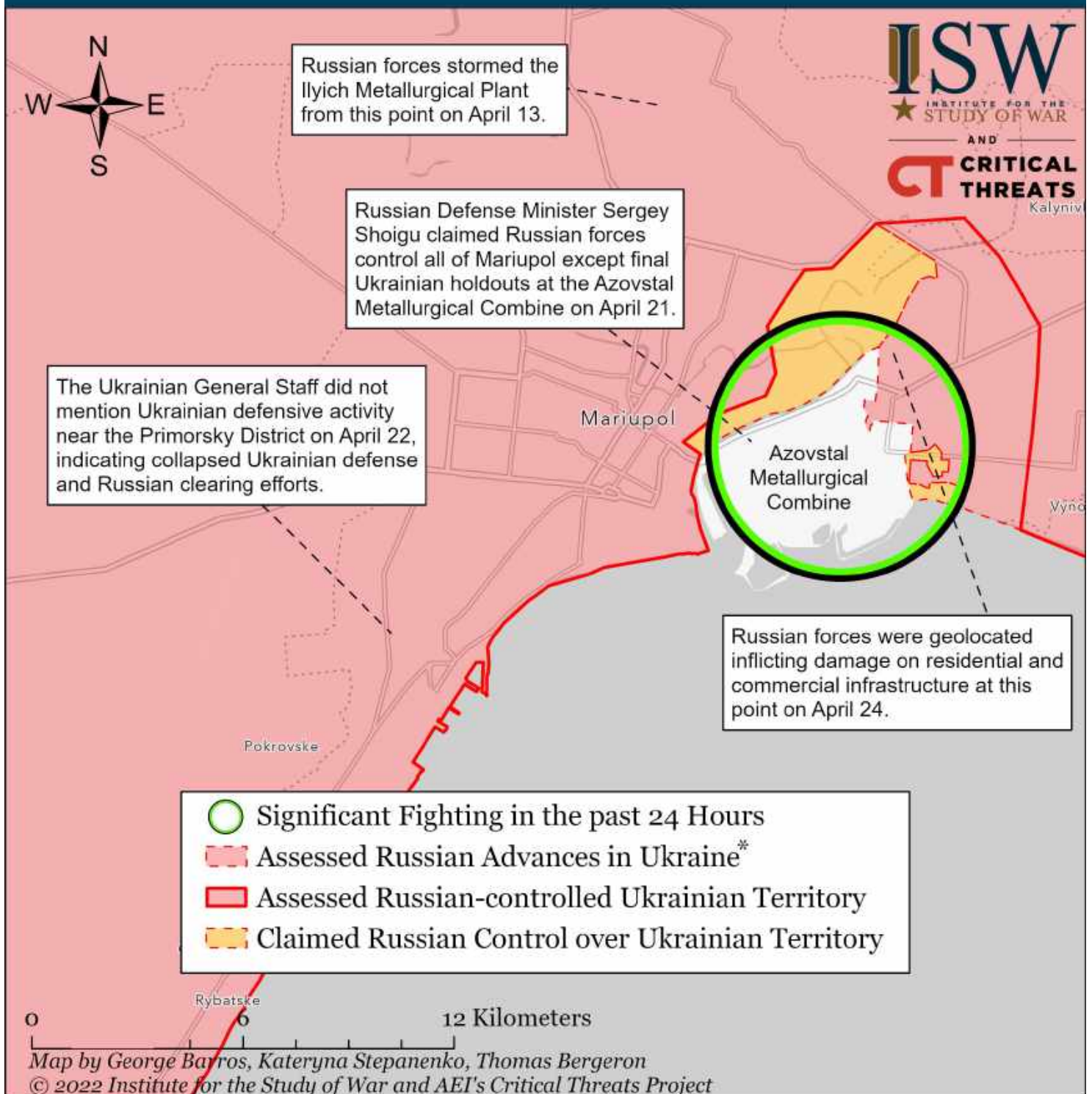
Assessed Control of Terrain Around Mariupol as of April 29, 2022, 3:00 ET



The Kremlin declared victory in Mariupol on April 21 after capturing the city besides Ukrainian holdouts in the encircled Azovstal Metallurgical Combine. Russian forces continued ground assaults on remaining Ukrainian defenders at Azovstal on April 27. Ukrainian forces engaged in small-scale street fights in the Left Bank District outside Azovstal on April 27. Russian war reporters filmed some Russian elements redeploying from Mariupol northward on April 24 and April 25. The Kremlin will spin the (still incomplete) capture of Mariupol into a major victory in Ukraine to compensate for stalled or failed Russian offensives elsewhere.

* Assessed Russian advances are areas where ISW assesses Russian forces have operated in or launched attacks against but do not control.

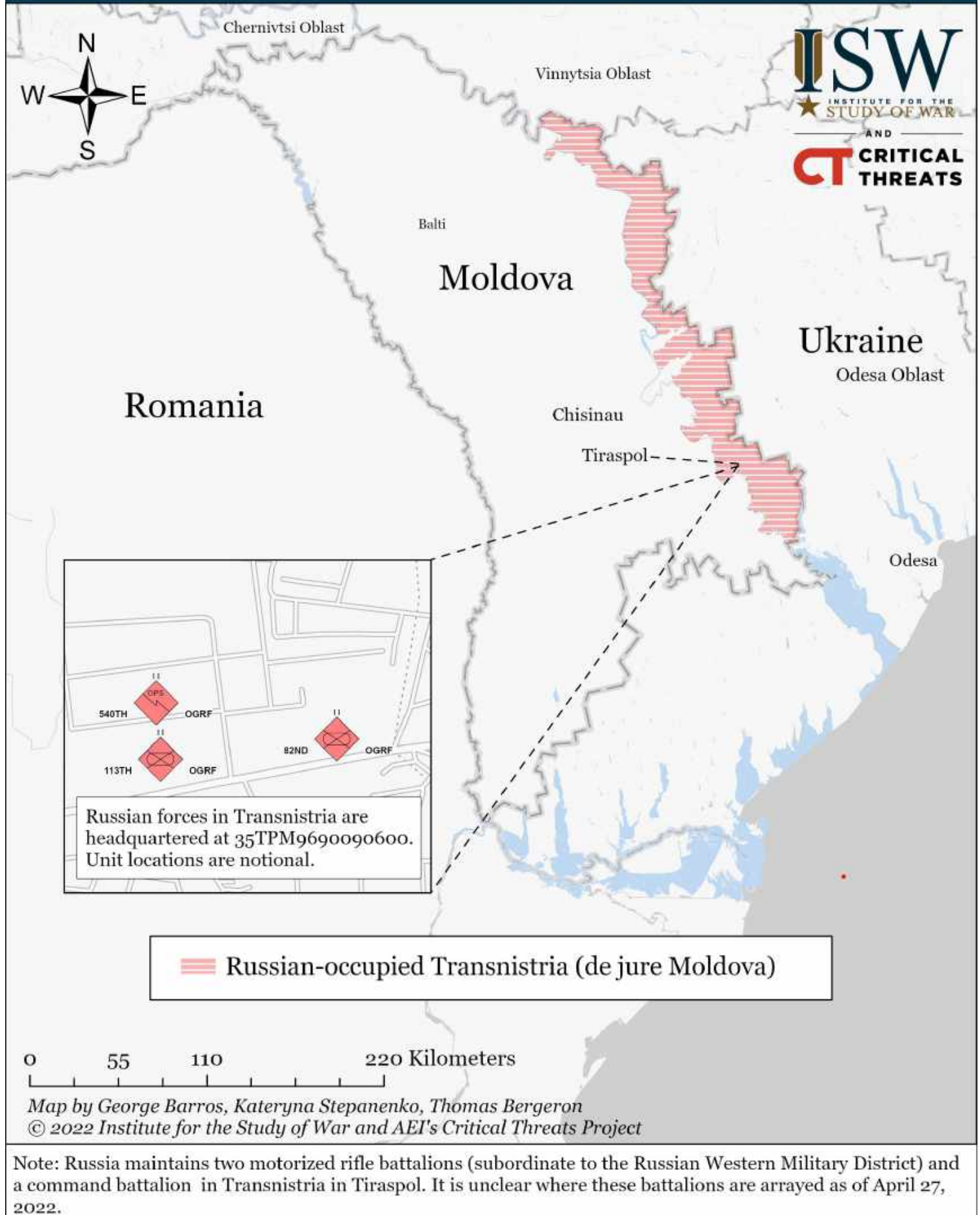
Assessed Control of Terrain Around Mariupol as of April 28, 2022, 3:00 ET



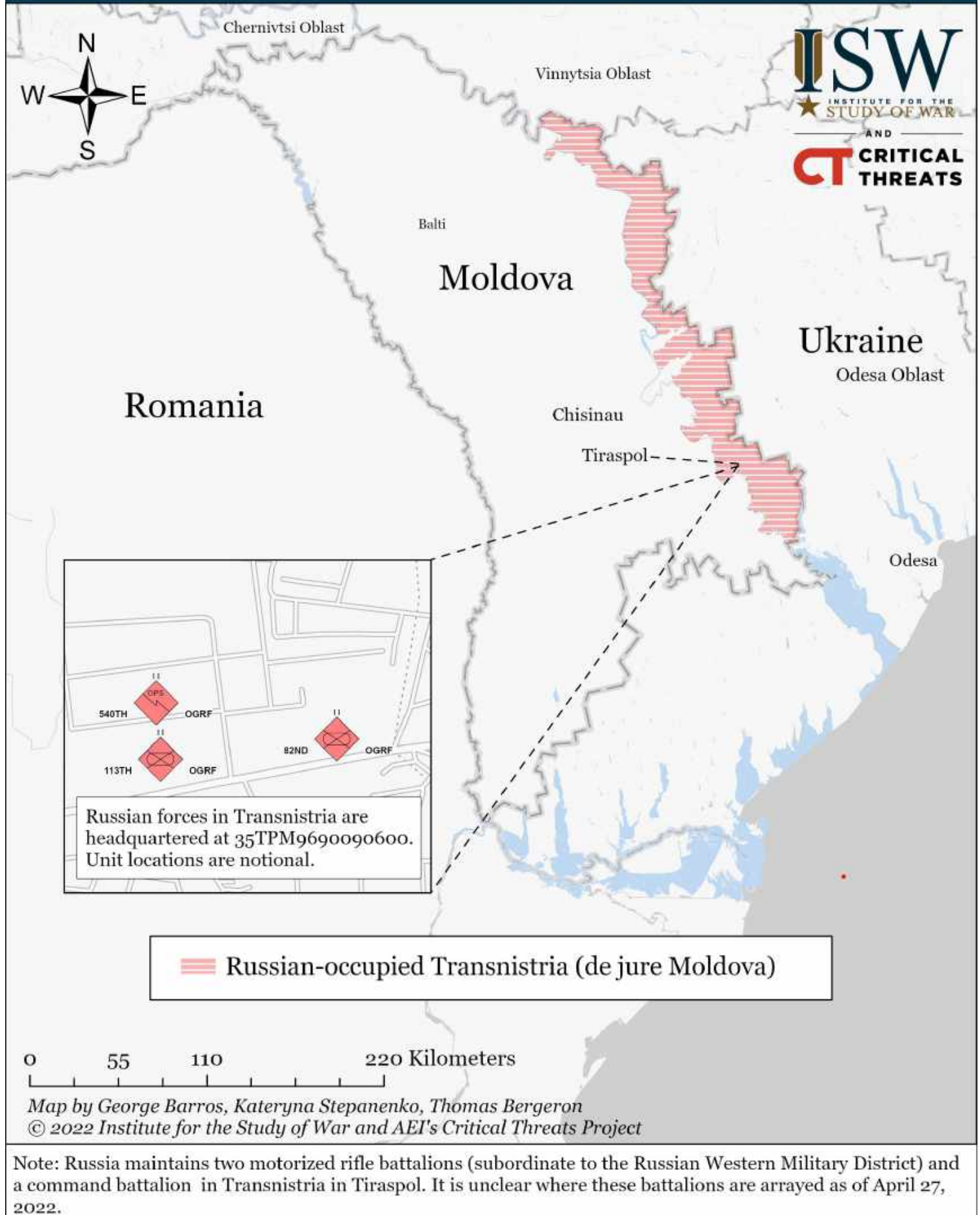
The Kremlin declared victory in Mariupol on April 21 after capturing the city besides Ukrainian holdouts in the encircled Azovstal Metallurgical Combine. Russian forces continued ground assaults on remaining Ukrainian defenders at Azovstal on April 27. Ukrainian forces engaged in small-scale street fights in the Left Bank District outside Azovstal on April 27. Russian war reporters filmed some Russian elements redeploying from Mariupol northward on April 24 and April 25. The Ukrainian General Staff notably did not mention Ukrainian defensive activity near the port of Mariupol or Primorsky District on April 22, indicating Russian clearing efforts. The Kremlin will spin the (still incomplete) capture of Mariupol into a major victory in Ukraine to compensate for stalled or failed Russian offensives elsewhere.

* Assessed Russian advances are areas where ISW assesses Russian forces have operated in or launched attacks against but do not control.

Moldova Situational Map as of April 30, 2022, 3:00 PM ET



Moldova Situational Map as of April 29, 2022, 3:00 PM ET



Moldova Situational Map as of April 28, 2022, 3:00 PM ET

