

Assessed Control of Terrain in Ukraine and Main Russian Maneuver Axes as of May 8, 2022, 3:00 PM ET



Map by George Barros, Kateryna Stepanenko, and Thomas Bergeron
© 2022 Institute for the Study of War and AEI's Critical Threats Project

* Assessed Russian advances are areas where ISW assesses Russian forces have operated in or launched attacks against but do not control.

Assessed Control of Terrain in Ukraine and Main Russian Maneuver Axes as of May 7, 2022, 3:00 PM ET



Map by George Barros, Kateryna Stepanenko, Thomas Bergeron, Peter Mills
© 2022 Institute for the Study of War and AEI's Critical Threats Project

* Assessed Russian advances are areas where ISW assesses Russian forces have operated in or launched attacks against but do not control.

Assessed Control of Terrain in Ukraine and Main Russian Maneuver Axes as of May 6, 2022, 3:00 PM ET



Map by George Barros, Kateryna Stepanenko, Thomas Bergeron
© 2022 Institute for the Study of War and AEI's Critical Threats Project

* Assessed Russian advances are areas where ISW assesses Russian forces have operated in or launched attacks against but do not control.

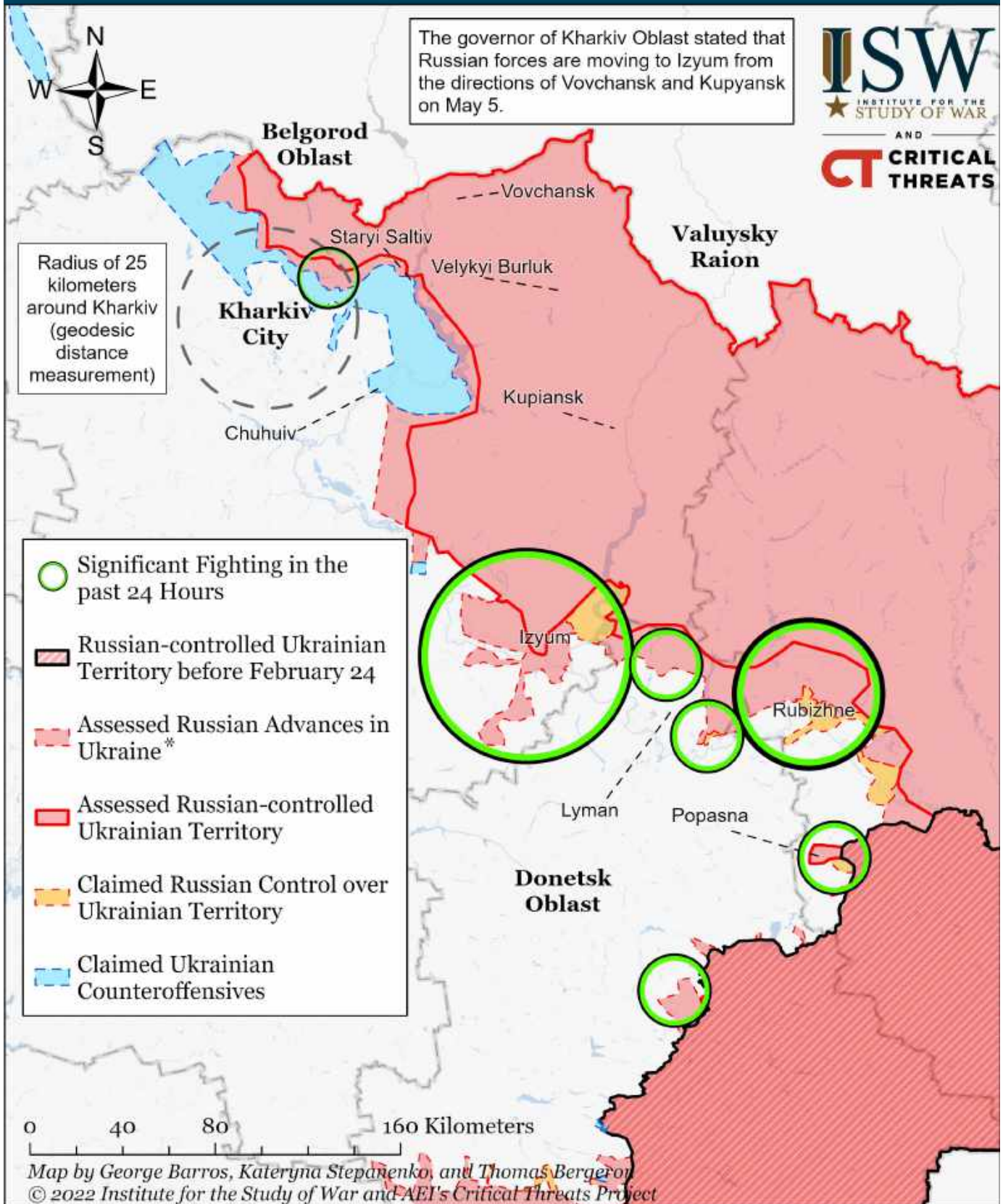
Assessed Control of Terrain in Ukraine and Main Russian Maneuver Axes as of May 5, 2022, 3:00 PM ET



Map by George Barros, Kateryna Stepanenko, Thomas Bergeron
© 2022 Institute for the Study of War and AEI's Critical Threats Project

* Assessed Russian advances are areas where ISW assesses Russian forces have operated in or launched attacks against but do not control.

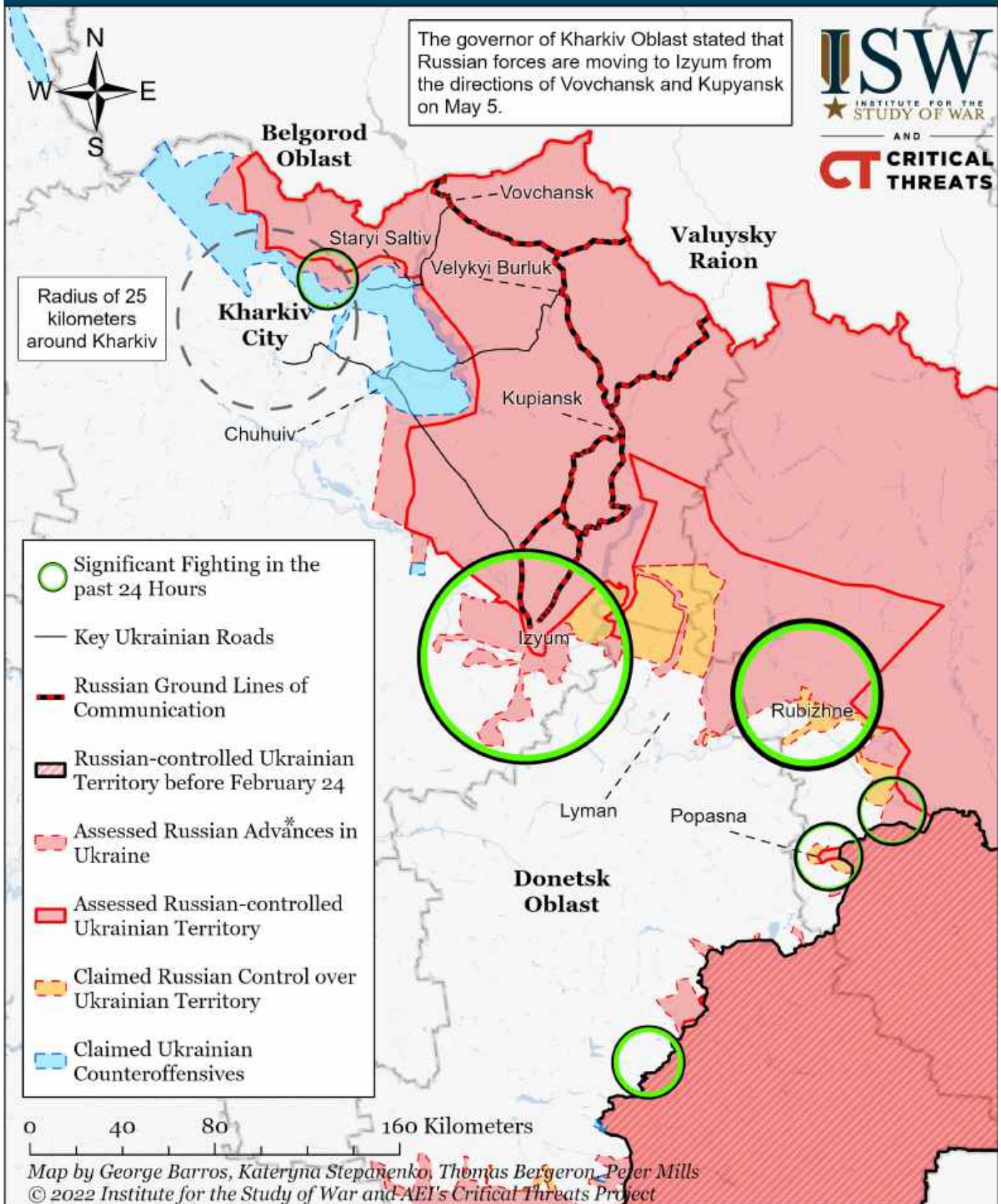
Assessed Control of Terrain Around Kharkiv as of May 8, 2022, 3:00 PM ET



* Assessed Russian advances are areas where ISW assesses Russian forces have operated in or launched attacks against but do not control.

An unconfirmed Russian social media report claimed that Russian forces retreated past Liptsy on May 7, but ISW did not map this report due to the lack of evidence of any withdrawals from villages southwest of Liptsy. The Ukrainian General Staff reported that Russian forces destroyed three bridges near Tsirkuny and Ruski Tyshky on May 7 to slow further Ukrainian counteroffensives. The Ukrainian counteroffensive north and east of Kharkiv made substantial progress in the last 24 hours and Ukrainian forces may be able to drive Russian forces out of tube artillery range of Kharkiv city itself in the coming days.

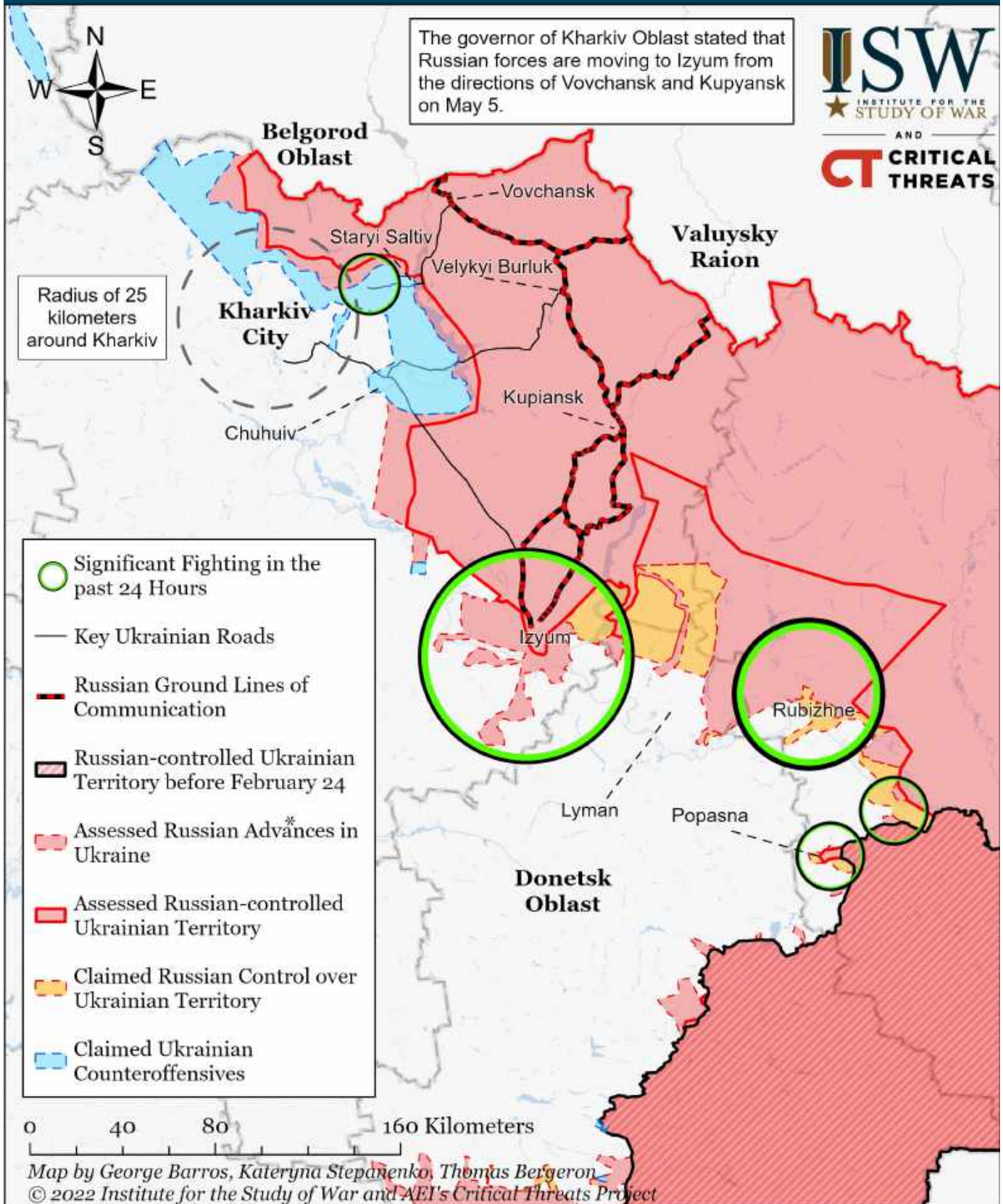
Assessed Control of Terrain Around Kharkiv as of May 7, 2022, 3:00 PM ET



* Assessed Russian advances are areas where ISW assesses Russian forces have operated in or launched attacks against but do not control.

An unconfirmed Russian social media report claimed that Russian forces retreated past Liptsy on May 7, but ISW did not map this report due to the lack of evidence of any withdrawals from villages southwest of Liptsy. The Ukrainian General Staff reported that Russian forces destroyed three bridges near Tsirkuny and Ruski Tyshky on May 7 to slow further Ukrainian counteroffensives. The Ukrainian counteroffensive north and east of Kharkiv made substantial progress in the last 24 hours and Ukrainian forces may be able to drive Russian forces out of tube artillery range of Kharkiv city itself in the coming days.

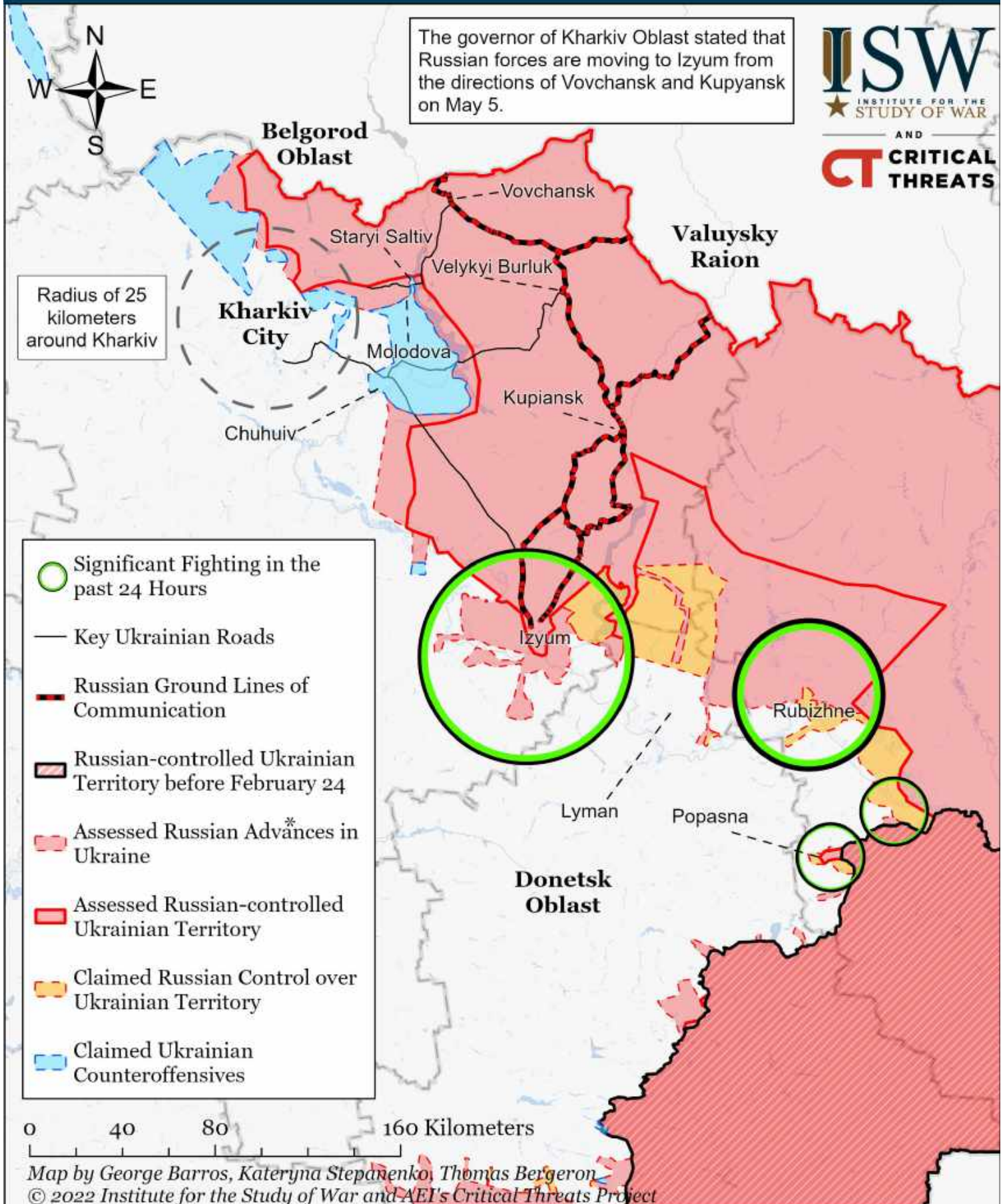
Assessed Control of Terrain Around Kharkiv as of May 6, 2022, 3:00 PM ET



* Assessed Russian advances are areas where ISW assesses Russian forces have operated in or launched attacks against but do not control.

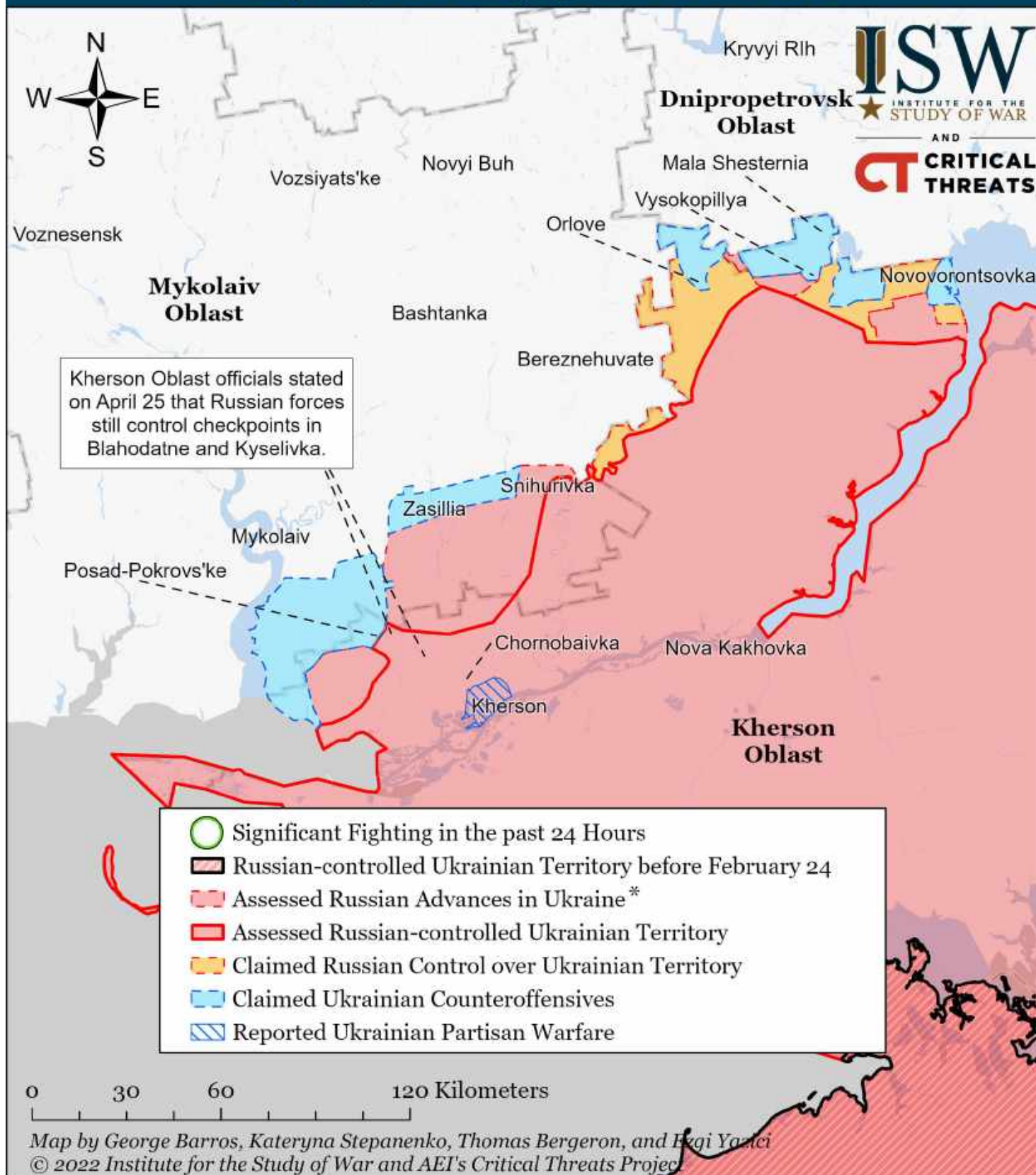
The Ukrainian General Staff and independent sources reported Ukrainian forces recaptured Oleksandrivka, Fedoriivka, Ukrainka, Shestakovo, Peremoha, Tsirkuny and part of Cherkasy Tishki from May 5-6. The Ukrainian counteroffensive north and east of Kharkiv made substantial progress in the last 24 hours and Ukrainian forces may be able to drive Russian forces out of tube artillery range of Kharkiv city itself in the coming days.

Assessed Control of Terrain Around Kharkiv as of May 5, 2022, 3:00 PM ET



* Assessed Russian advances are areas where ISW assesses Russian forces have operated in or launched attacks against but do not control.

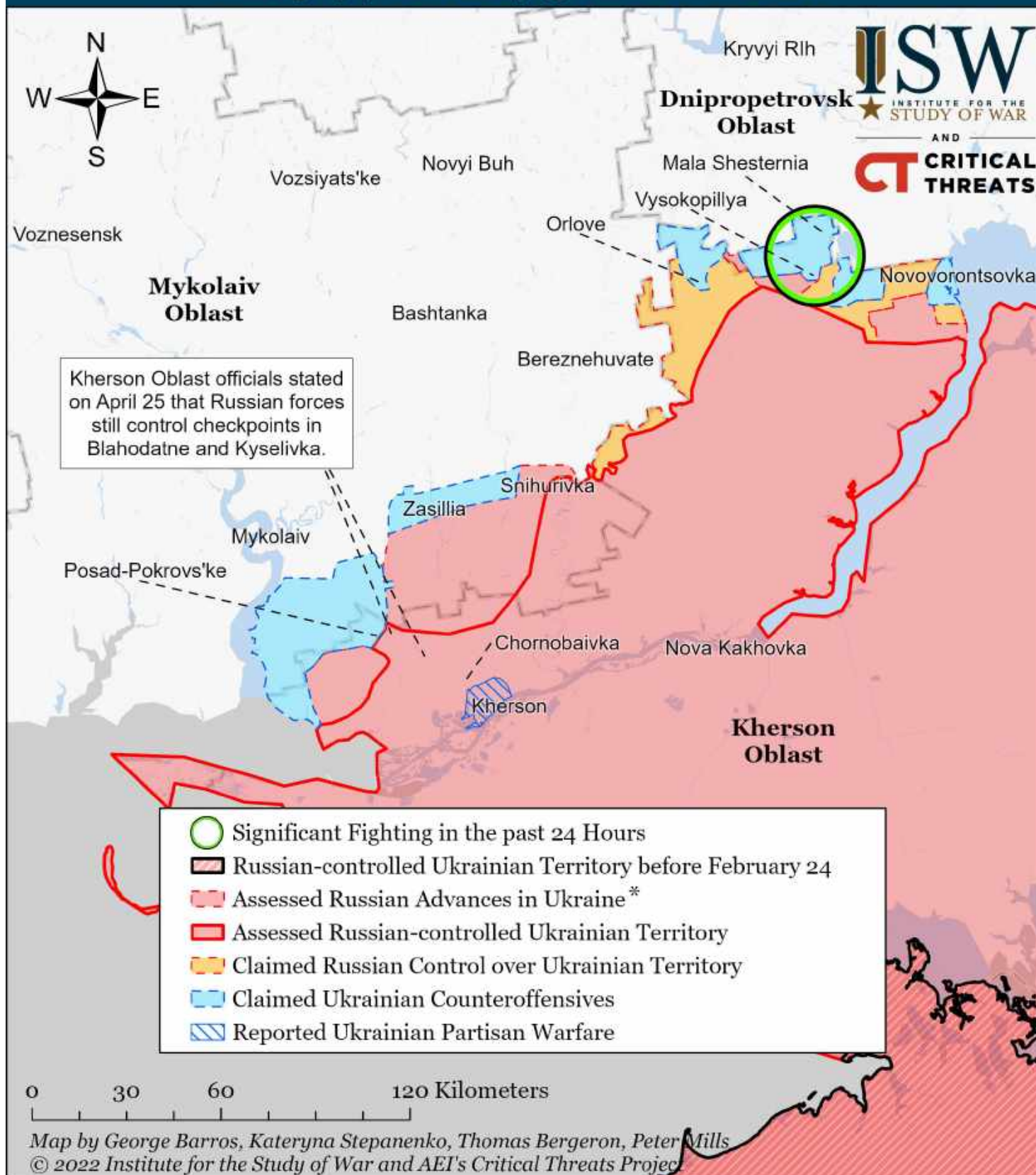
Assessed Control of Terrain Around Kherson and Mykolaiv as of May 8, 2022, 3:00 PM ET



* Assessed Russian advances are areas where ISW assesses Russian forces have operated in or launched attacks against but do not control.

Note: Ukraine's General Staff reported on May 5 that Ukrainian forces regained control over several unspecified settlements on the border of Mykolaiv and Kherson oblasts. Ukrainian forces also announced regaining control over four unspecified villages along the Kherson-Mykolaiv border on May 3. This was insufficient evidence and information to update our maps. The locations of these settlements is still unknown as of this publication. ISW will update our map once open sources name the liberated settlements.

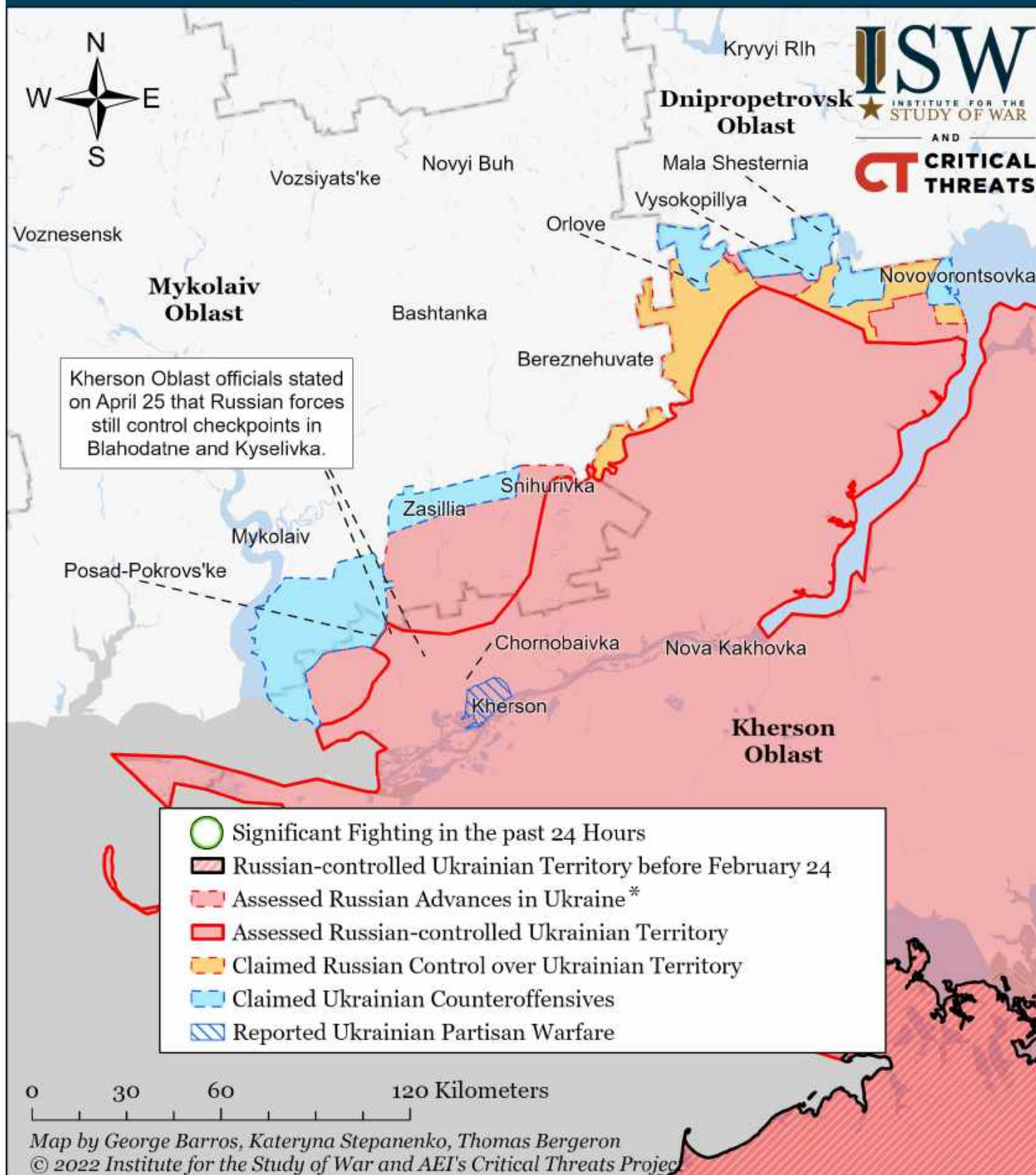
Assessed Control of Terrain Around Kherson and Mykolaiv as of May 7, 2022, 3:00 PM ET



* Assessed Russian advances are areas where ISW assesses Russian forces have operated in or launched attacks against but do not control.

Note: Ukraine's General Staff reported on May 5 that Ukrainian forces regained control over several unspecified settlements on the border of Mykolaiv and Kherson oblasts. Ukrainian forces also announced regaining control over four unspecified villages along the Kherson-Mykolaiv border on May 3. This is insufficient evidence and information to update our maps at this time. ISW will update our map once open sources name the liberated settlements.

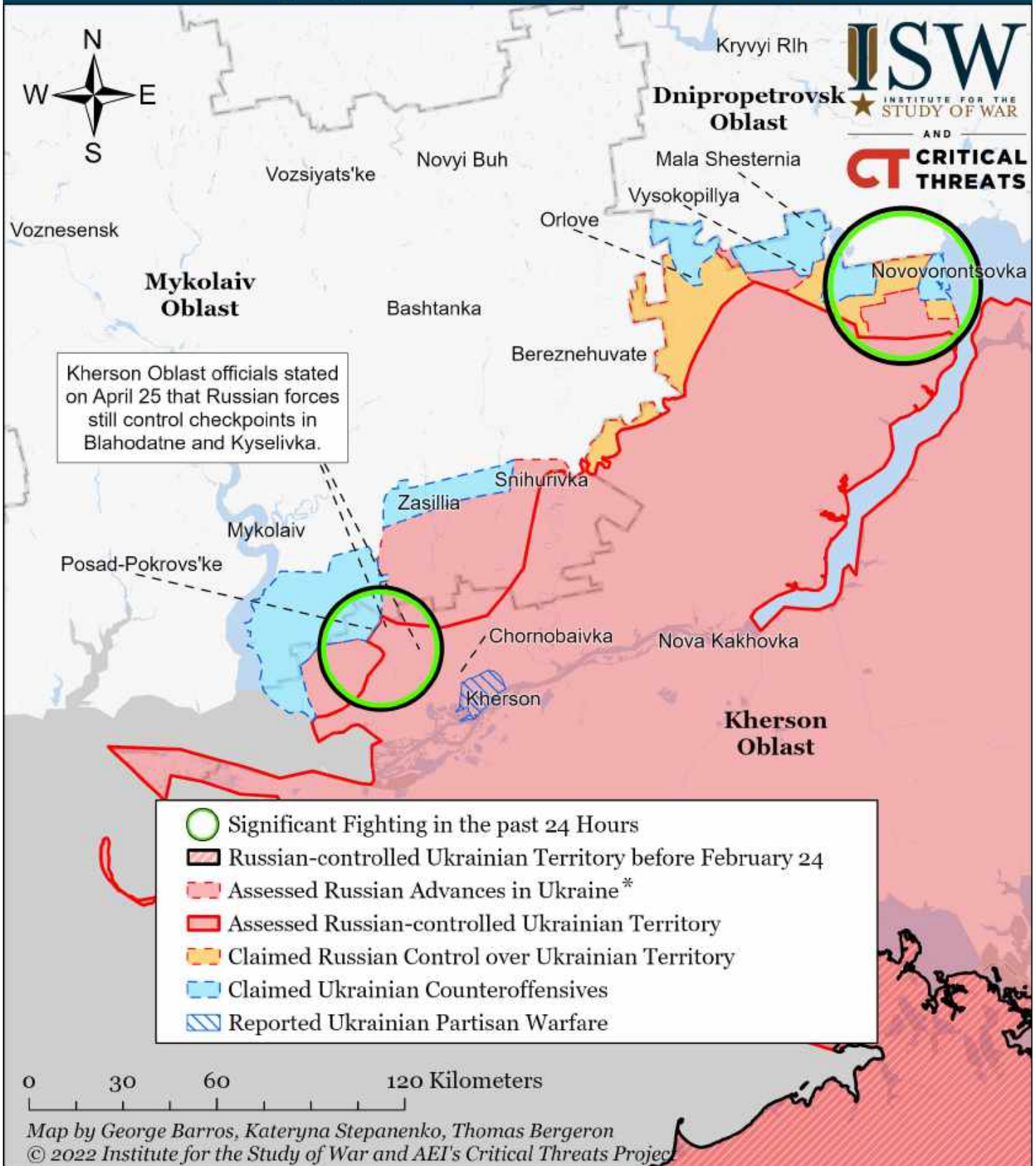
Assessed Control of Terrain Around Kherson and Mykolaiv as of May 6, 2022, 3:00 PM ET



* Assessed Russian advances are areas where ISW assesses Russian forces have operated in or launched attacks against but do not control.

Note: Ukraine's General Staff reported on May 5 that Ukrainian forces regained control over several unspecified settlements on the border of Mykolaiv and Kherson oblasts. Ukrainian forces also announced regaining control over four unspecified villages along the Kherson-Mykolaiv border on May 3. This is insufficient evidence and information to update our maps at this time. ISW will update our map once open sources name the liberated settlements.

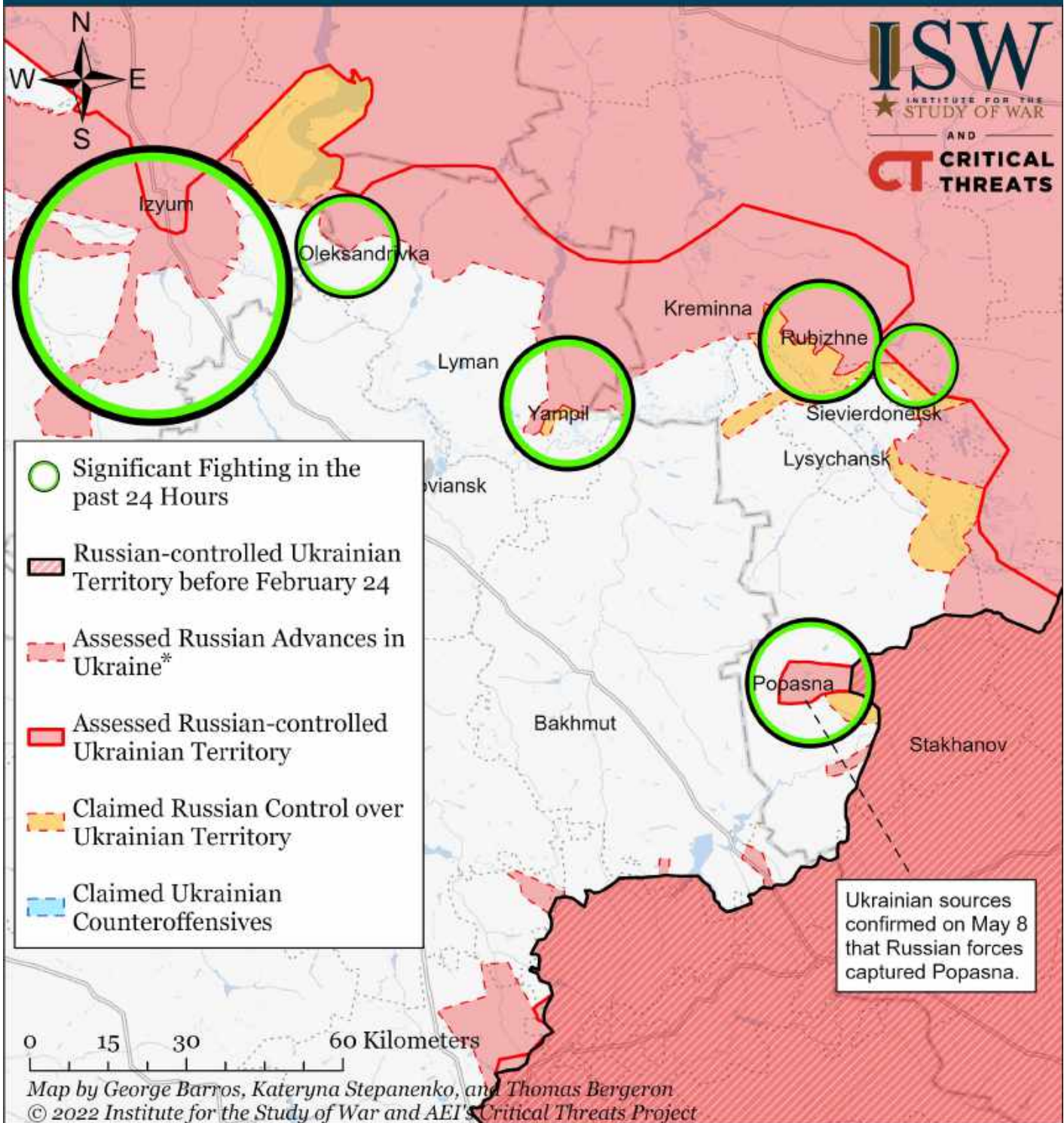
Assessed Control of Terrain Around Kherson and Mykolaiv as of May 5, 2022, 3:00 PM ET



* Assessed Russian advances are areas where ISW assesses Russian forces have operated in or launched attacks against but do not control.

Note: Ukraine's General Staff reported on May 5 that Ukrainian forces regained control over several unspecified settlements on the border of Mykolaiv and Kherson oblasts. Ukrainian forces also announced regaining control over four unspecified villages along the Kherson-Mykolaiv border on May 3. This is insufficient evidence and information to update our maps at this time. ISW will update our map once open sources name the liberated settlements.

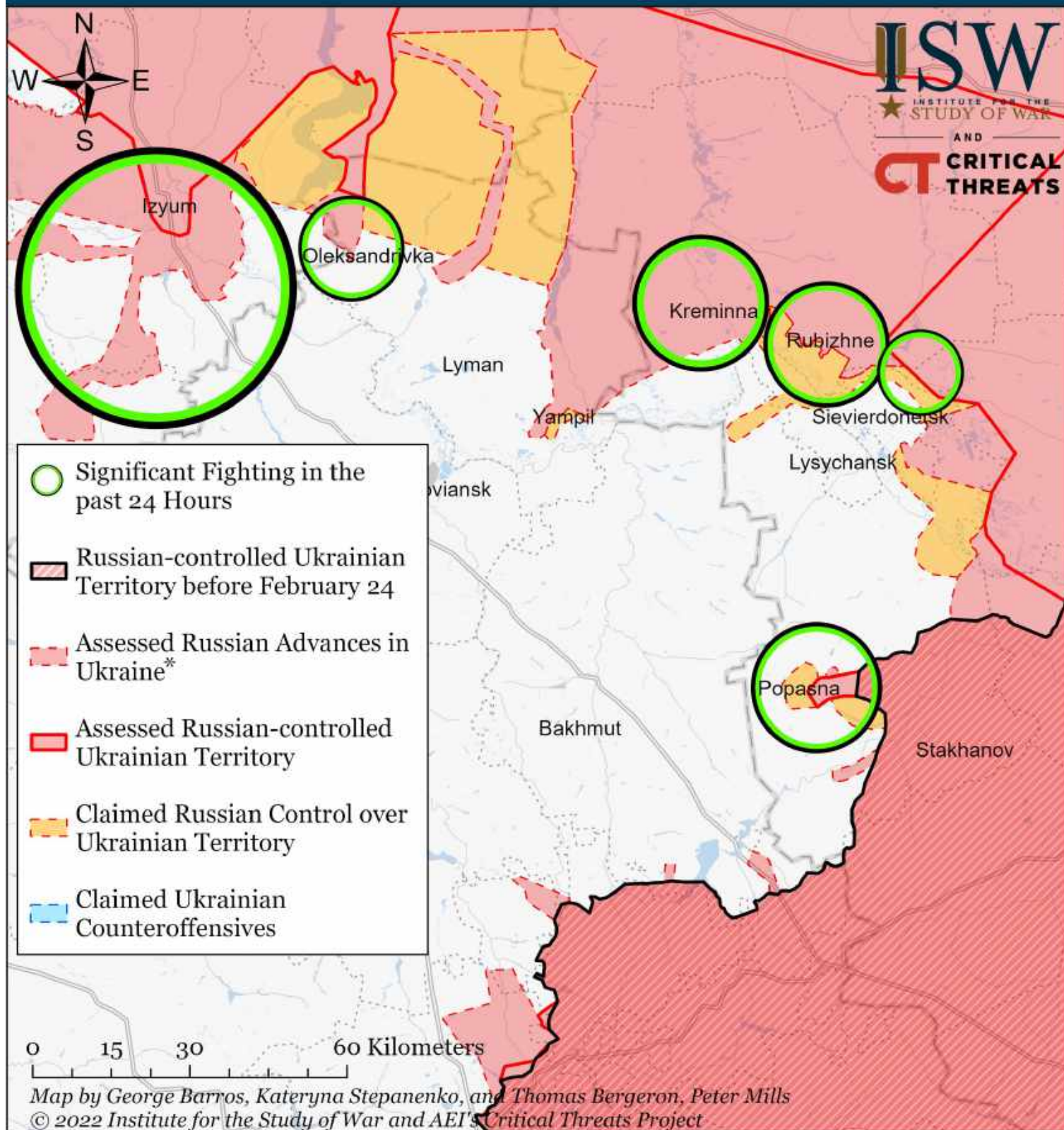
Assessed Control of Terrain Around Luhansk as of May 8, 2022, 3:00 PM ET



* Assessed Russian advances are areas where ISW assesses Russian forces have operated in or launched attacks against but do not control.

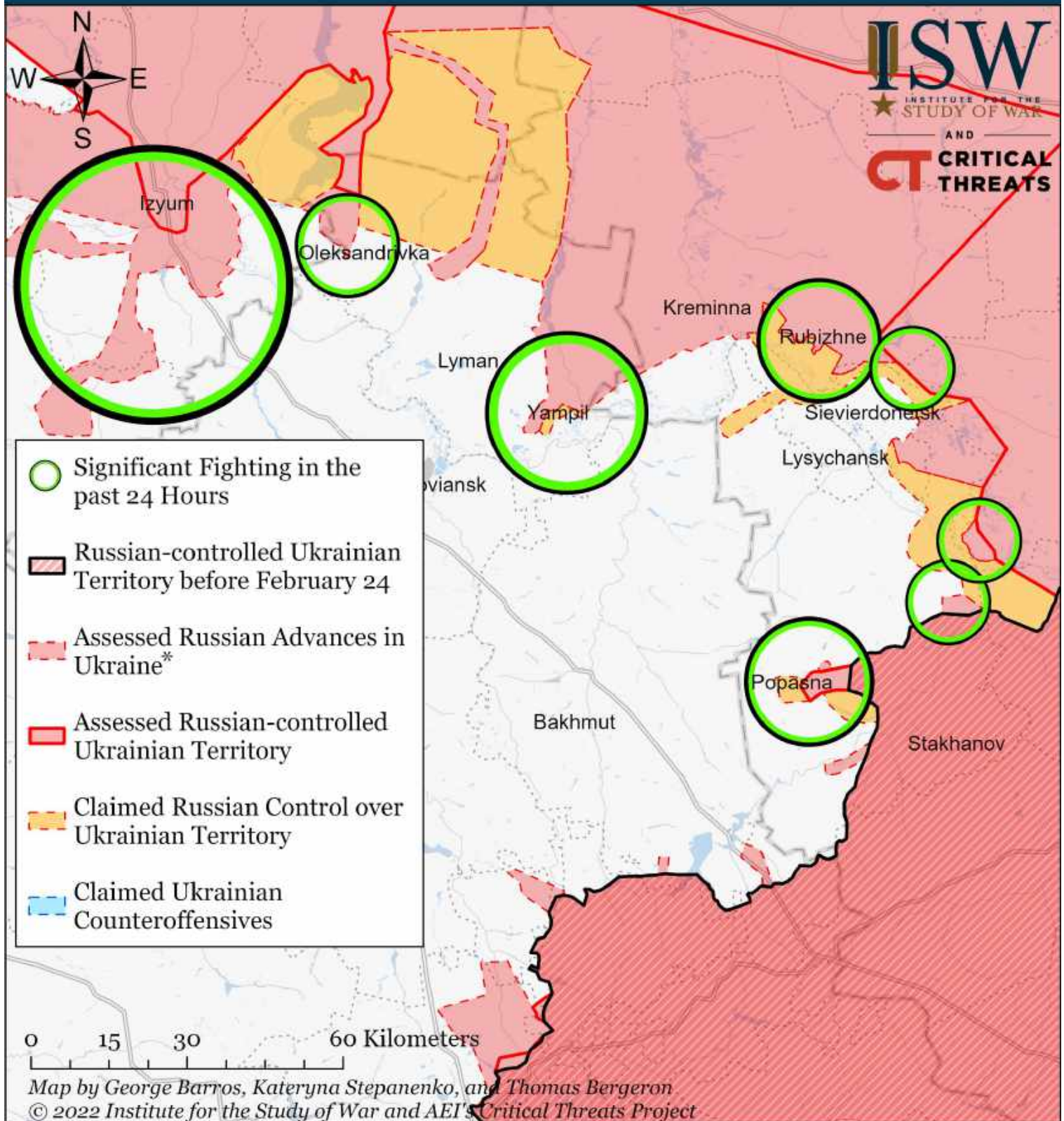
Note: We have recoded Russian-claimed areas between known Russian advances between Lozove, Zelena Dolyna, and Yampil to be assessed Russian advances due to an absence of observed Ukrainian defense activity in these areas. We assessed part of these areas to be Russian-controlled and have recoded the areas as such; we advanced Russian control in this area given the lack of evidence of Ukrainian attacks north of the front lines in Oleksandrivka and Novoselivka. We have not recoded the Russian-claimed area northeast of Oskil given the ambiguity of the situation in this area. We will update our map when we can confirm more information. We also advanced assessed Russian control north of Rubizhne closer to Rubizhne given the lack of organized Ukrainian indirect fire attacks on forward Russian positions north of Rubizhne. We previously had not moved the assessed Russian control line closer to Rubizhne due to the area being within the range of hypothetical Ukrainian rocket artillery near the frontline, however, we have not seen evidence of such Ukrainian strikes against these areas.

Assessed Control of Terrain Around Luhansk as of May 7, 2022, 3:00 PM ET



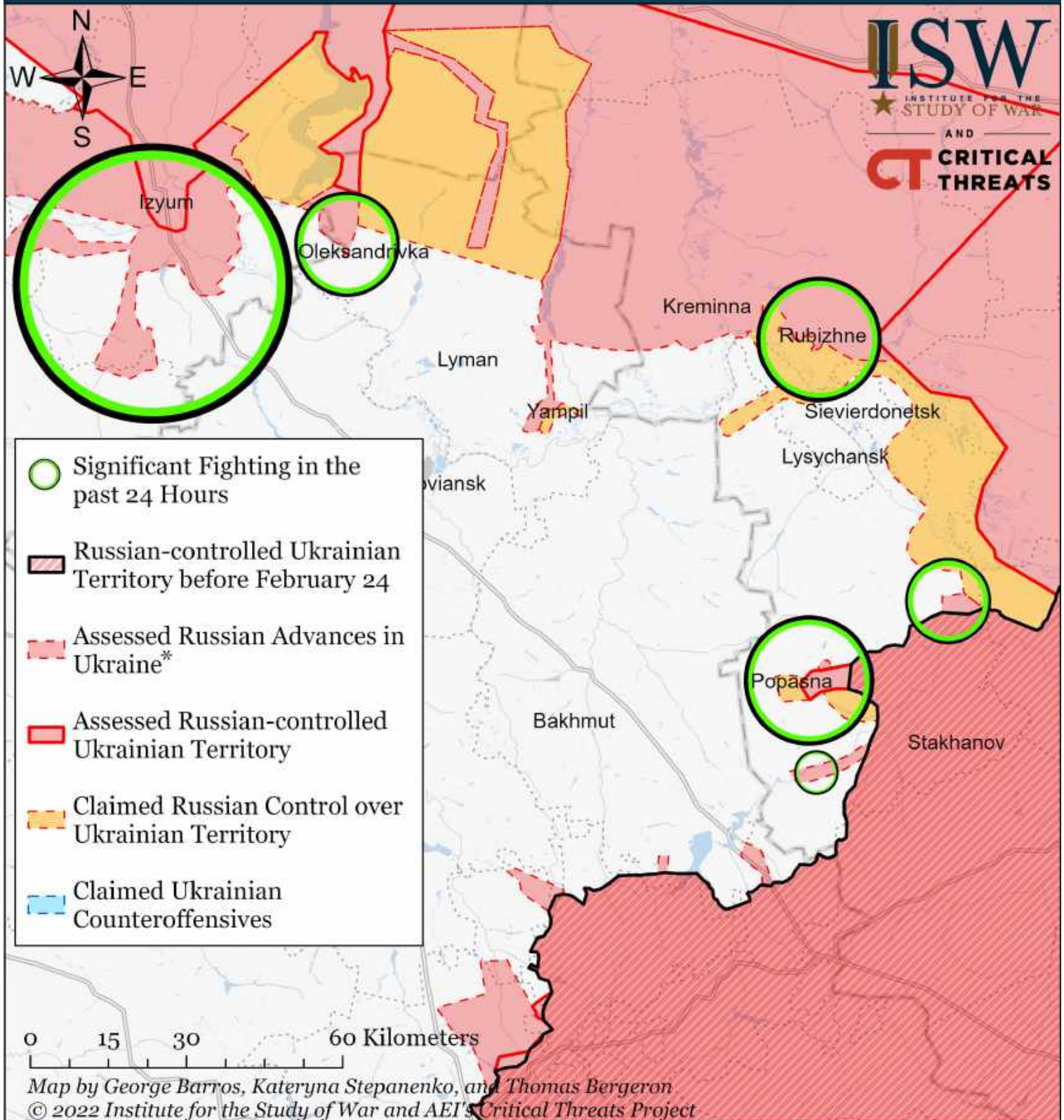
* Assessed Russian advances are areas where ISW assesses Russian forces have operated in or launched attacks against but do not control.

Assessed Control of Terrain Around Luhansk as of May 6, 2022, 3:00 PM ET



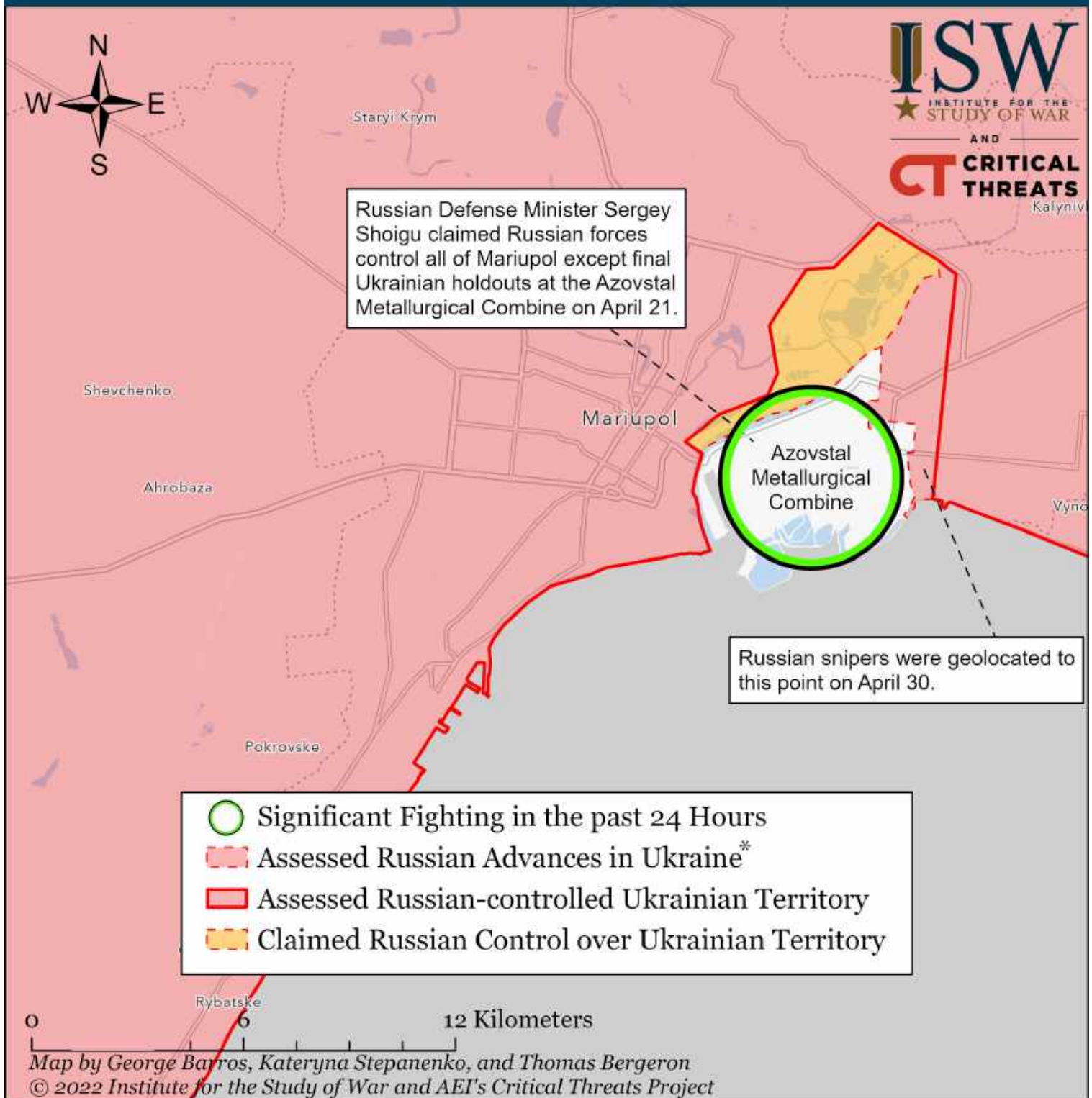
* Assessed Russian advances are areas where ISW assesses Russian forces have operated in or launched attacks against but do not control.

Assessed Control of Terrain Around Luhansk as of May 5, 2022, 3:00 PM ET



* Assessed Russian advances are areas where ISW assesses Russian forces have operated in or launched attacks against but do not control.

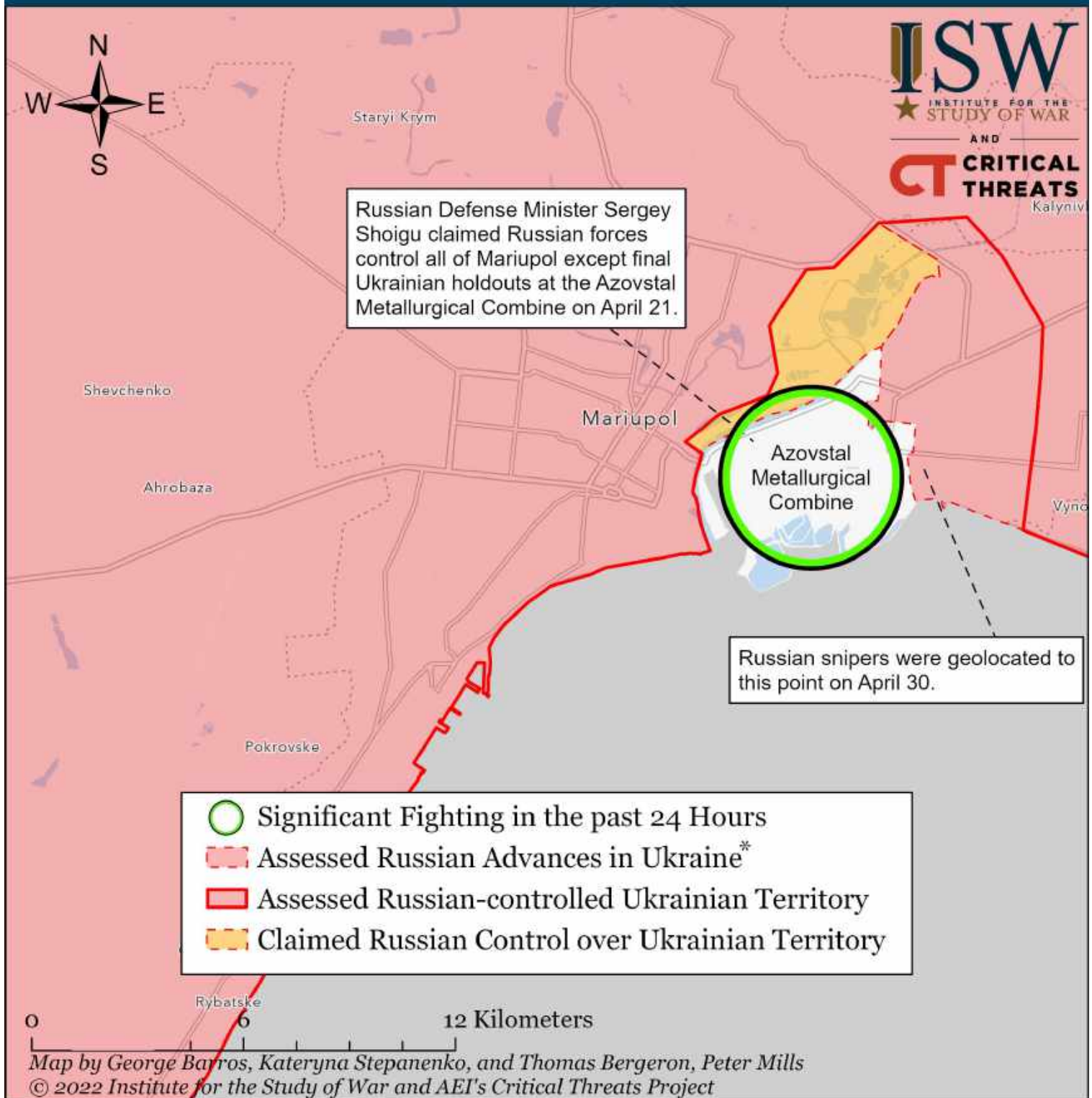
Assessed Control of Terrain Around Mariupol as of May 8, 2022, 3:00 PM ET



The Kremlin declared victory in Mariupol on April 21 after capturing the city besides Ukrainian holdouts in the encircled Azovstal Metallurgical Combine. Russian forces reportedly conducted an assault on the remaining Ukrainian defenders at Azovstal on May 4. Russian war reporters filmed some Russian elements redeploying from Mariupol northward on April 24 and April 25. The Kremlin will spin the (still incomplete) capture of Mariupol into a major victory in Ukraine to compensate for stalled or failed Russian offensives elsewhere.

* Assessed Russian advances are areas where ISW assesses Russian forces have operated in or launched attacks against but do not control.

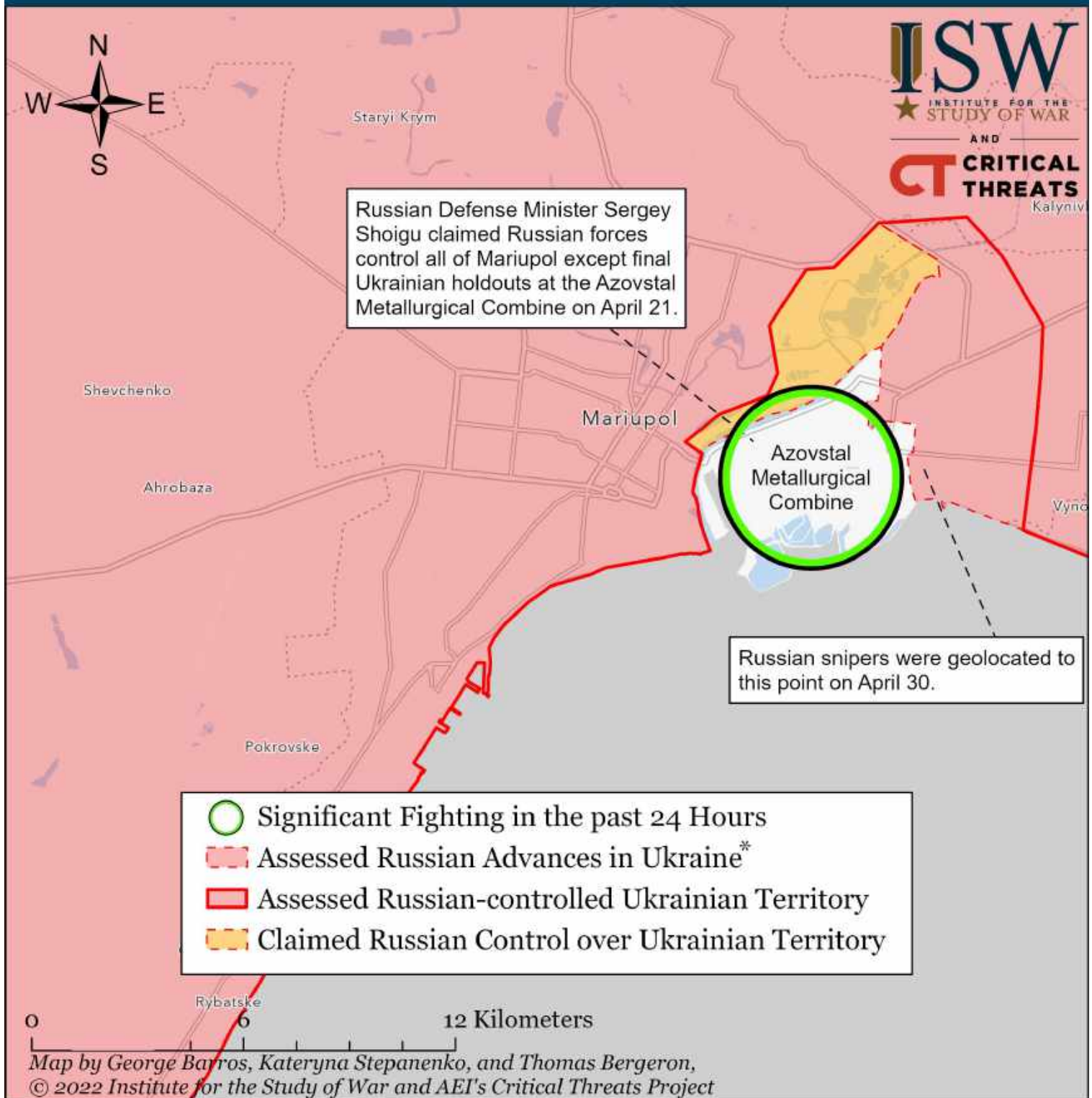
Assessed Control of Terrain Around Mariupol as of May 7, 2022, 3:00 PM ET



The Kremlin declared victory in Mariupol on April 21 after capturing the city besides Ukrainian holdouts in the encircled Azovstal Metallurgical Combine. Russian forces reportedly conducted an assault on the remaining Ukrainian defenders at Azovstal on May 4. Russian war reporters filmed some Russian elements redeploying from Mariupol northward on April 24 and April 25. The Kremlin will spin the (still incomplete) capture of Mariupol into a major victory in Ukraine to compensate for stalled or failed Russian offensives elsewhere.

* Assessed Russian advances are areas where ISW assesses Russian forces have operated in or launched attacks against but do not control.

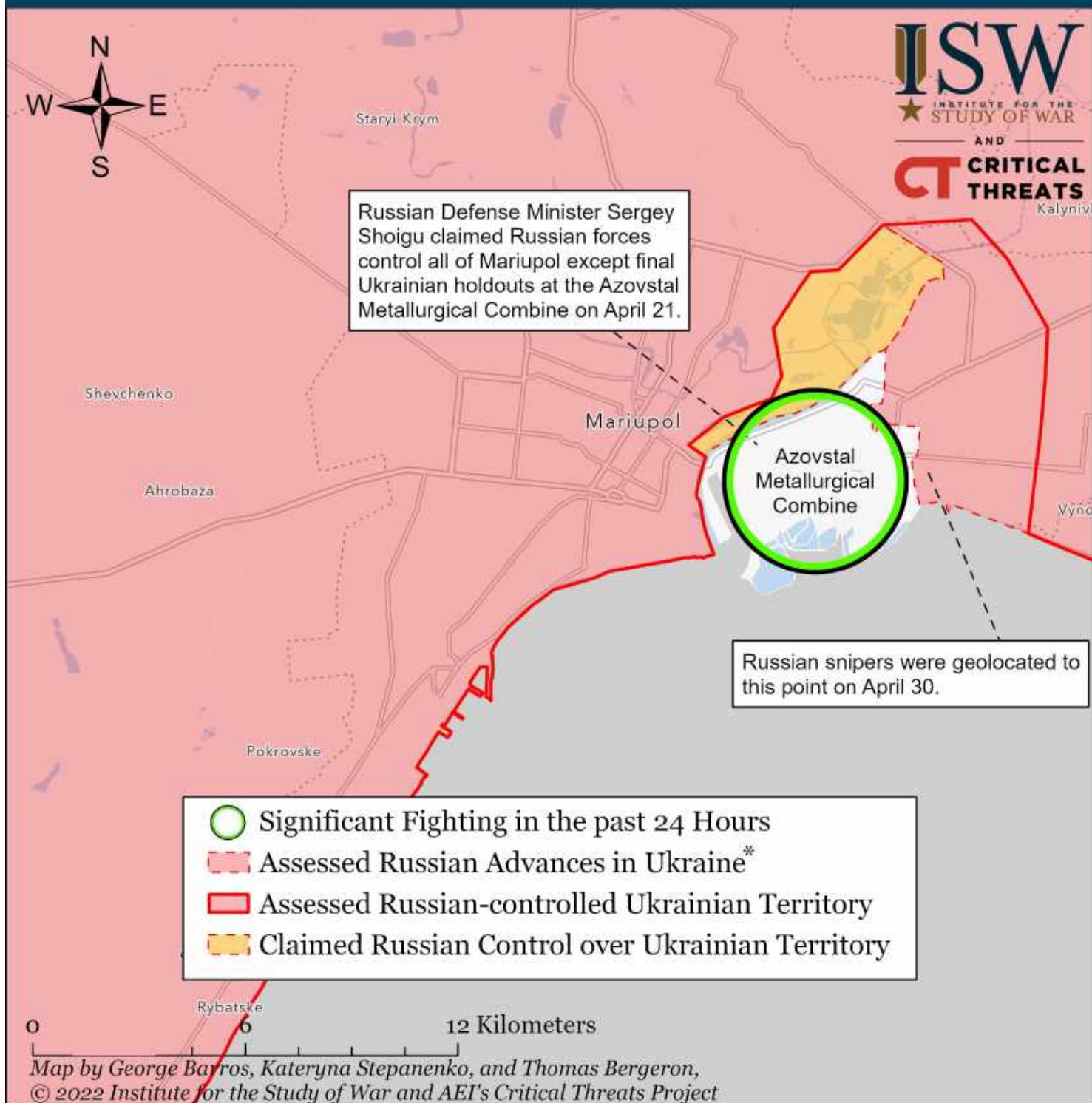
Assessed Control of Terrain Around Mariupol as of May 6, 2022, 3:00 PM ET



The Kremlin declared victory in Mariupol on April 21 after capturing the city besides Ukrainian holdouts in the encircled Azovstal Metallurgical Combine. Russian forces reportedly conducted an assault on the remaining Ukrainian defenders at Azovstal on May 4. Russian war reporters filmed some Russian elements redeploying from Mariupol northward on April 24 and April 25. The Kremlin will spin the (still incomplete) capture of Mariupol into a major victory in Ukraine to compensate for stalled or failed Russian offensives elsewhere.

* Assessed Russian advances are areas where ISW assesses Russian forces have operated in or launched attacks against but do not control.

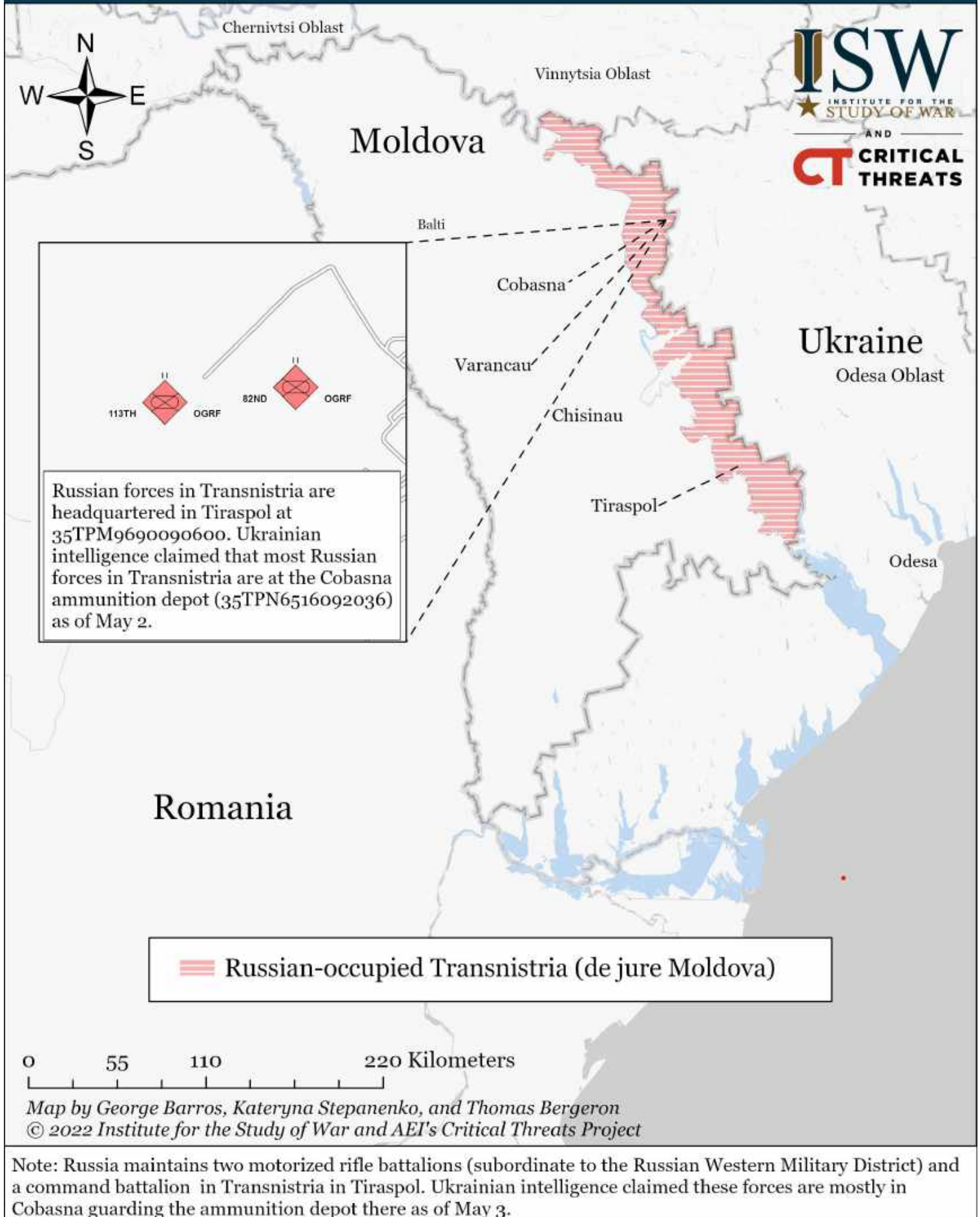
Assessed Control of Terrain Around Mariupol as of May 5, 2022, 3:00 PM ET



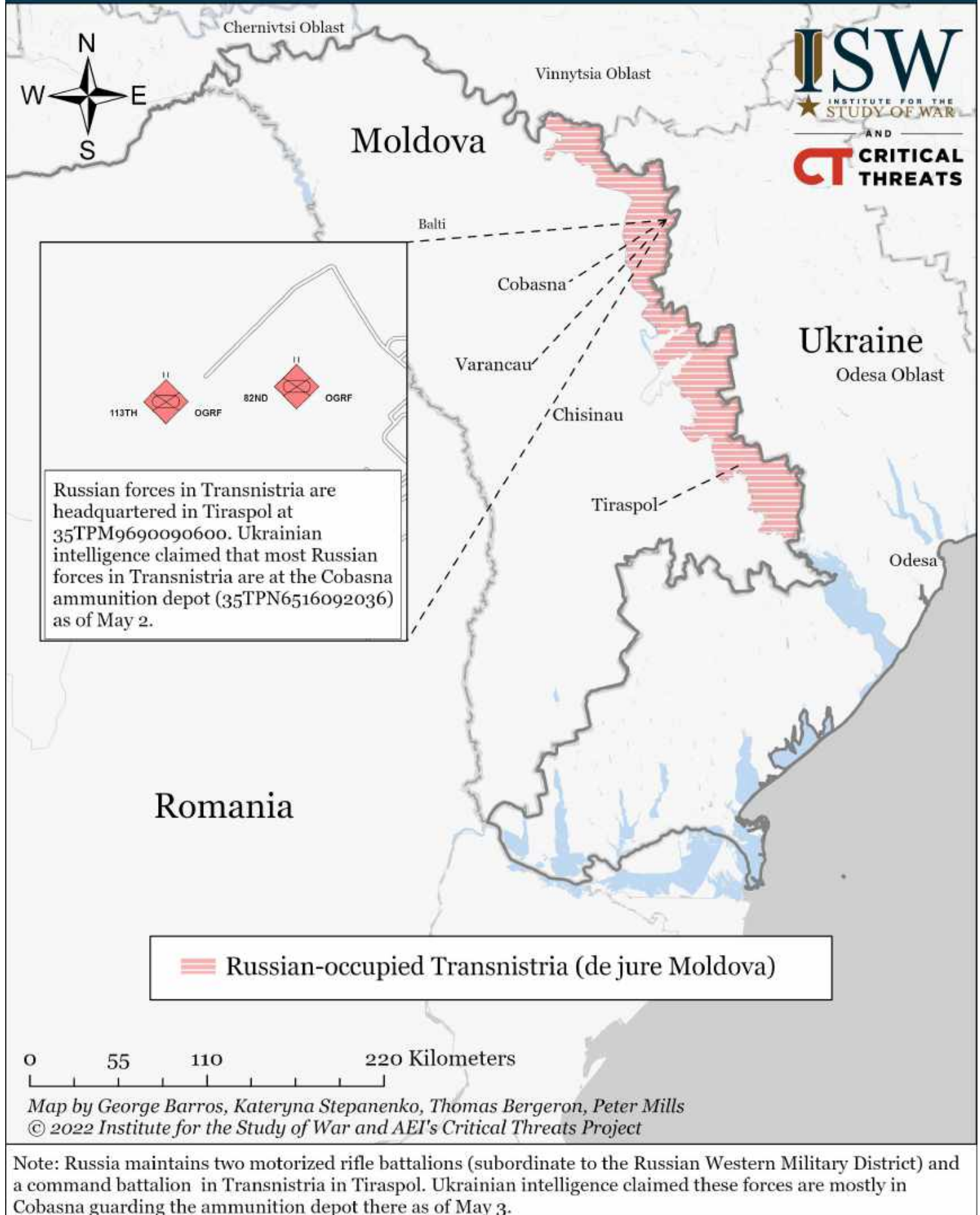
The Kremlin declared victory in Mariupol on April 21 after capturing the city besides Ukrainian holdouts in the encircled Azovstal Metallurgical Combine. Russian forces reportedly conducted an assault on the remaining Ukrainian defenders at Azovstal on May 4. Ukrainian forces engaged in small-scale street fights in the Left Bank District outside Azovstal on April 27. Russian war reporters filmed some Russian elements redeploying from Mariupol northward on April 24 and April 25. The Ukrainian General Staff notably did not mention Ukrainian defensive activity near the port of Mariupol or Primorsky District on April 22, indicating Russian clearing efforts. The Kremlin will spin the (still incomplete) capture of Mariupol into a major victory in Ukraine to compensate for stalled or failed Russian offensives elsewhere.

* Assessed Russian advances are areas where ISW assesses Russian forces have operated in or launched attacks against but do not control.

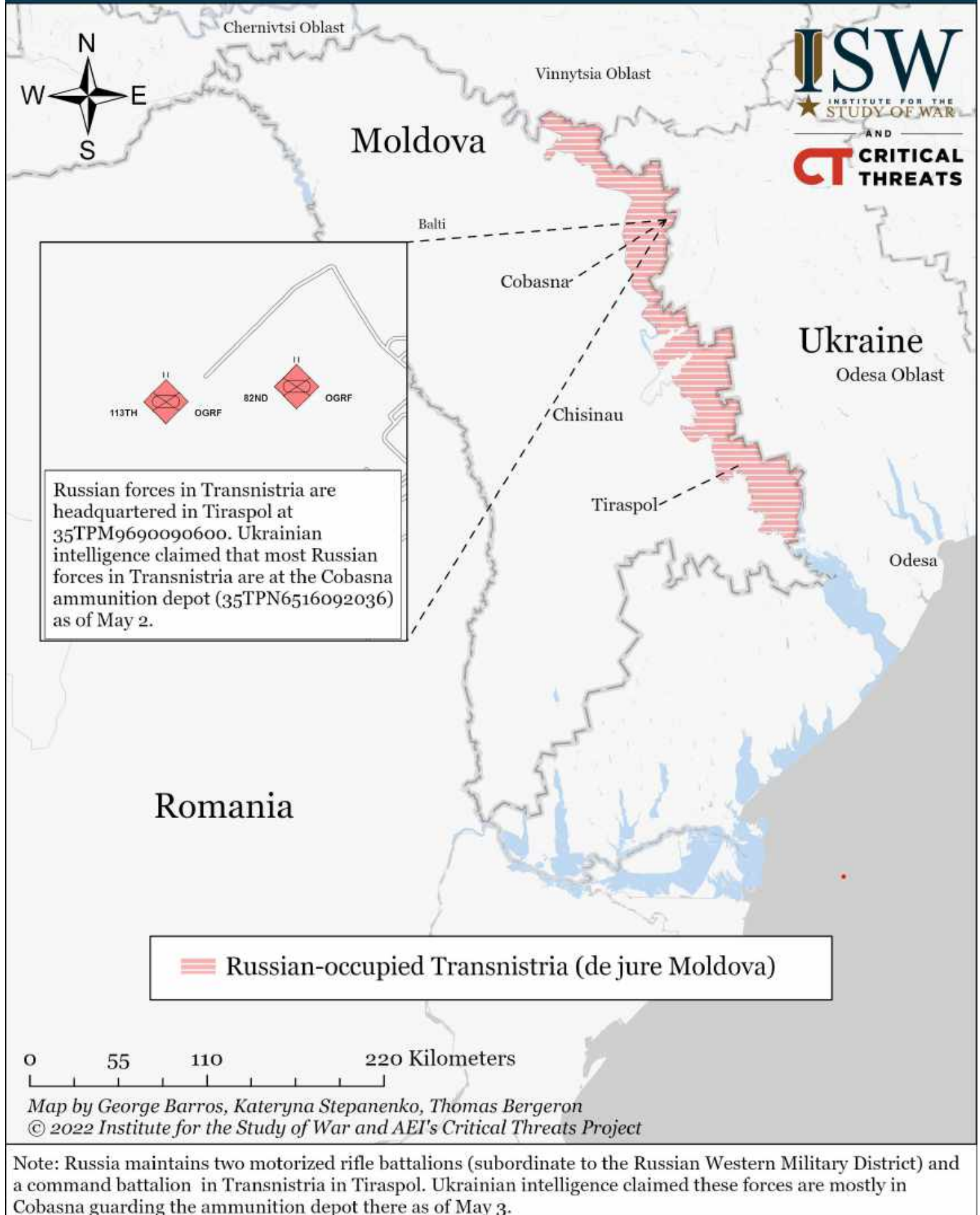
Moldova Situational Map as of May 8, 2022, 3:00 PM ET



Moldova Situational Map as of May 7, 2022, 3:00 PM ET



Moldova Situational Map as of May 6, 2022, 3:00 PM ET



Moldova Situational Map as of May 5, 2022, 3:00 PM ET

