

Assessed Control of Terrain in Ukraine and Main Russian Maneuver Axes as of May 12, 2022, 3:00 PM ET



Map by George Barros, Kateryna Stepanenko, Thomas Bergeron
© 2022 Institute for the Study of War and AEI's Critical Threats Project

* Assessed Russian advances are areas where ISW assesses Russian forces have operated in or launched attacks against but do not control.

Assessed Control of Terrain in Ukraine and Main Russian Maneuver Axes as of May 11, 2022, 3:00 PM ET



Map by George Barros, Kateryna Stepanenko, Thomas Bergeron
© 2022 Institute for the Study of War and AEI's Critical Threats Project

* Assessed Russian advances are areas where ISW assesses Russian forces have operated in or launched attacks against but do not control.

Assessed Control of Terrain in Ukraine and Main Russian Maneuver Axes as of May 10, 2022, 3:00 PM ET



Map by George Barros, Kateryna Stepanenko, Thomas Bergeron, and Peter Mills
© 2022 Institute for the Study of War and AEI's Critical Threats Project

* Assessed Russian advances are areas where ISW assesses Russian forces have operated in or launched attacks against but do not control.

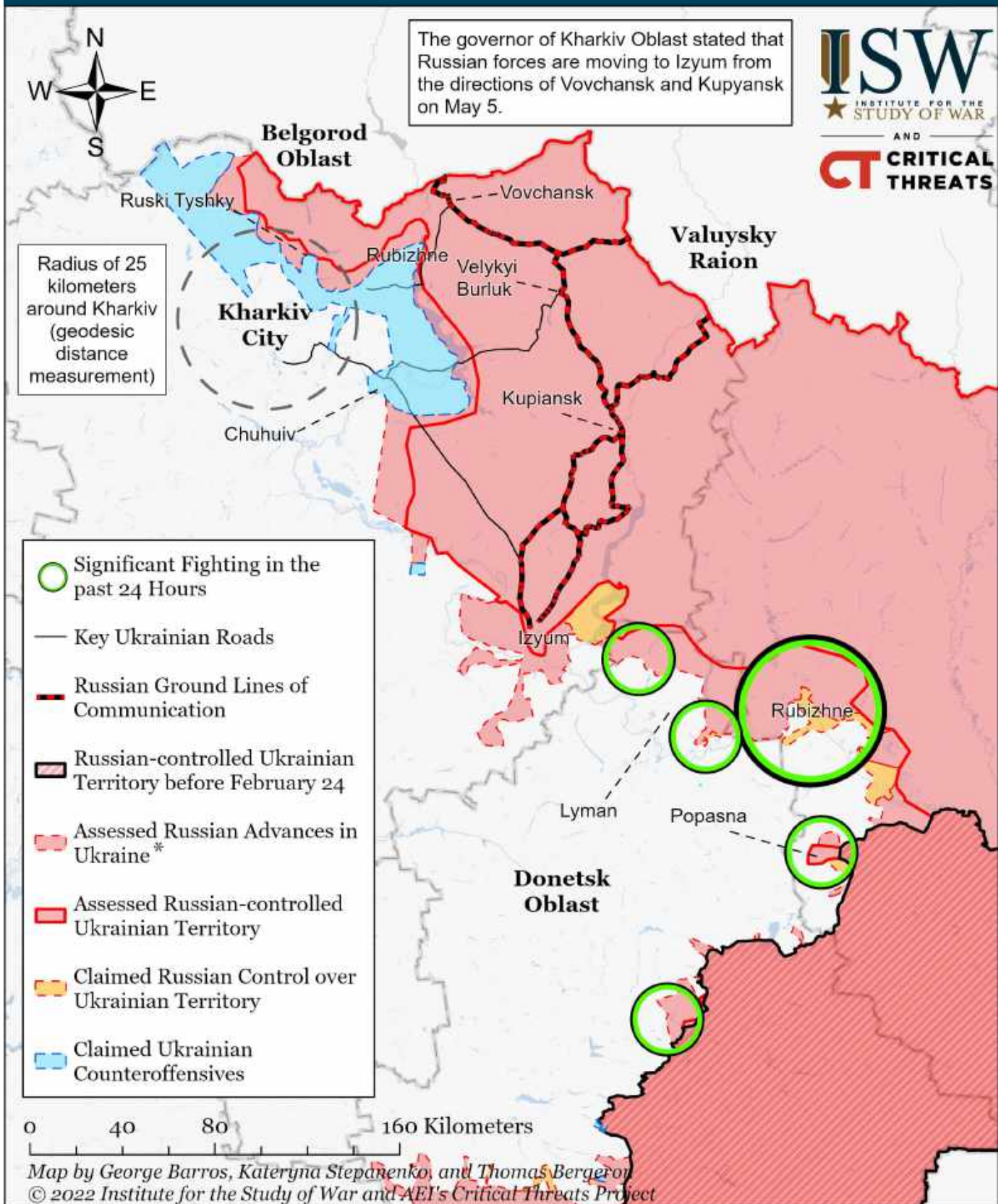
Assessed Control of Terrain in Ukraine and Main Russian Maneuver Axes as of May 9, 2022, 3:00 PM ET



Map by George Barros, Kateryna Stepanenko, and Thomas Bergeron
© 2022 Institute for the Study of War and AEI's Critical Threats Project

* Assessed Russian advances are areas where ISW assesses Russian forces have operated in or launched attacks against but do not control.

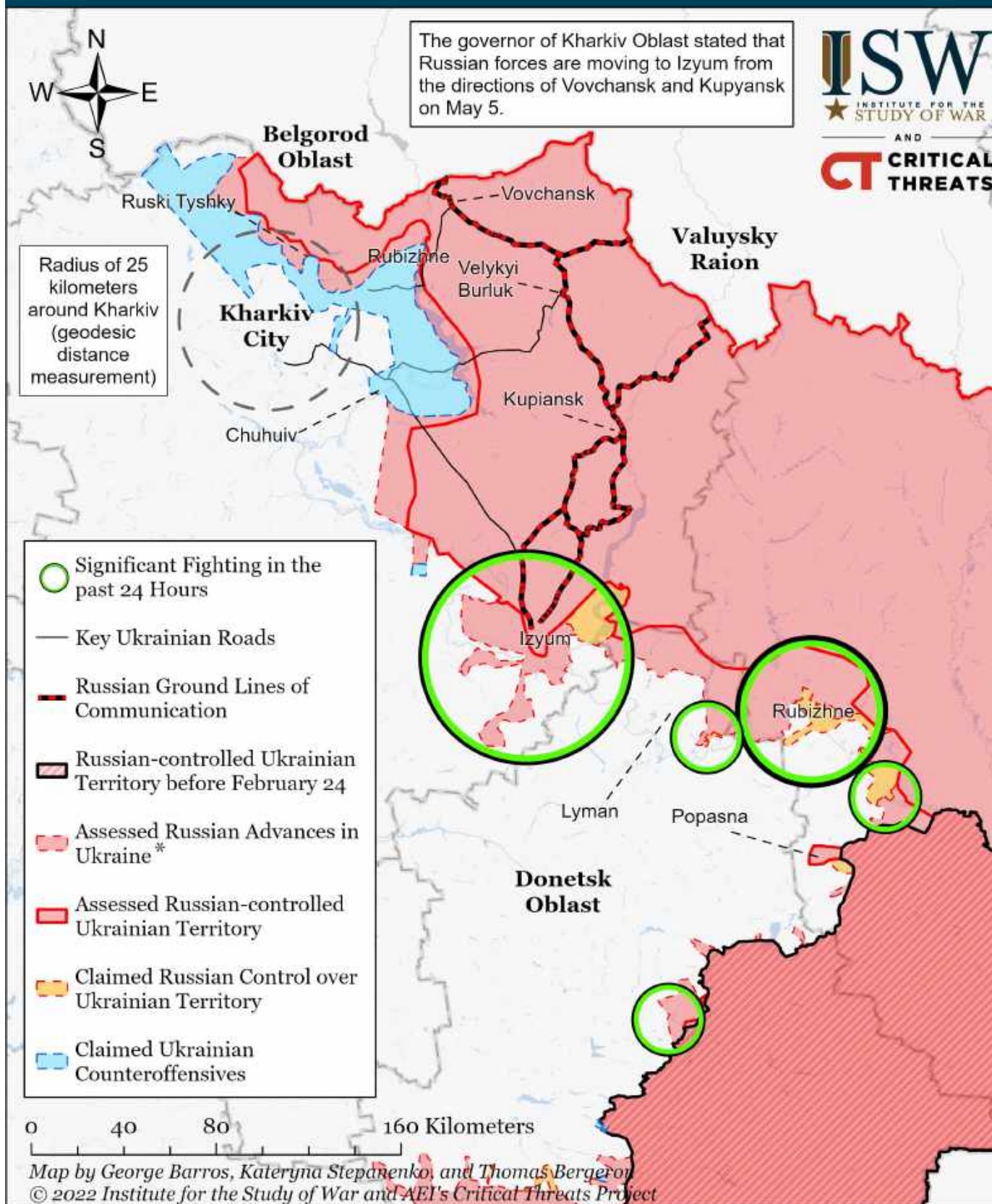
Assessed Control of Terrain Around Kharkiv as of May 12, 2022, 3:00 PM ET



* Assessed Russian advances are areas where ISW assesses Russian forces have operated in or launched attacks against but do not control.

An unconfirmed Russian social media report claimed that Russian forces retreated past Liptsy on May 7, but ISW did not map this report due to the lack of evidence of any withdrawals from villages southwest of Liptsy. The Ukrainian General Staff reported that Russian forces destroyed three bridges near Tsirkuny and Ruski Tyshky on May 7 to slow further Ukrainian counteroffensives. ISW extended are of the Ukrainian counteroffensives to Ruski Tyshky based on Russian shelling of the settlement on May 9. Ukrainian forces recaptured Rubizhne (Kharkiv), Pytomnyk, and Bairak on May 10.

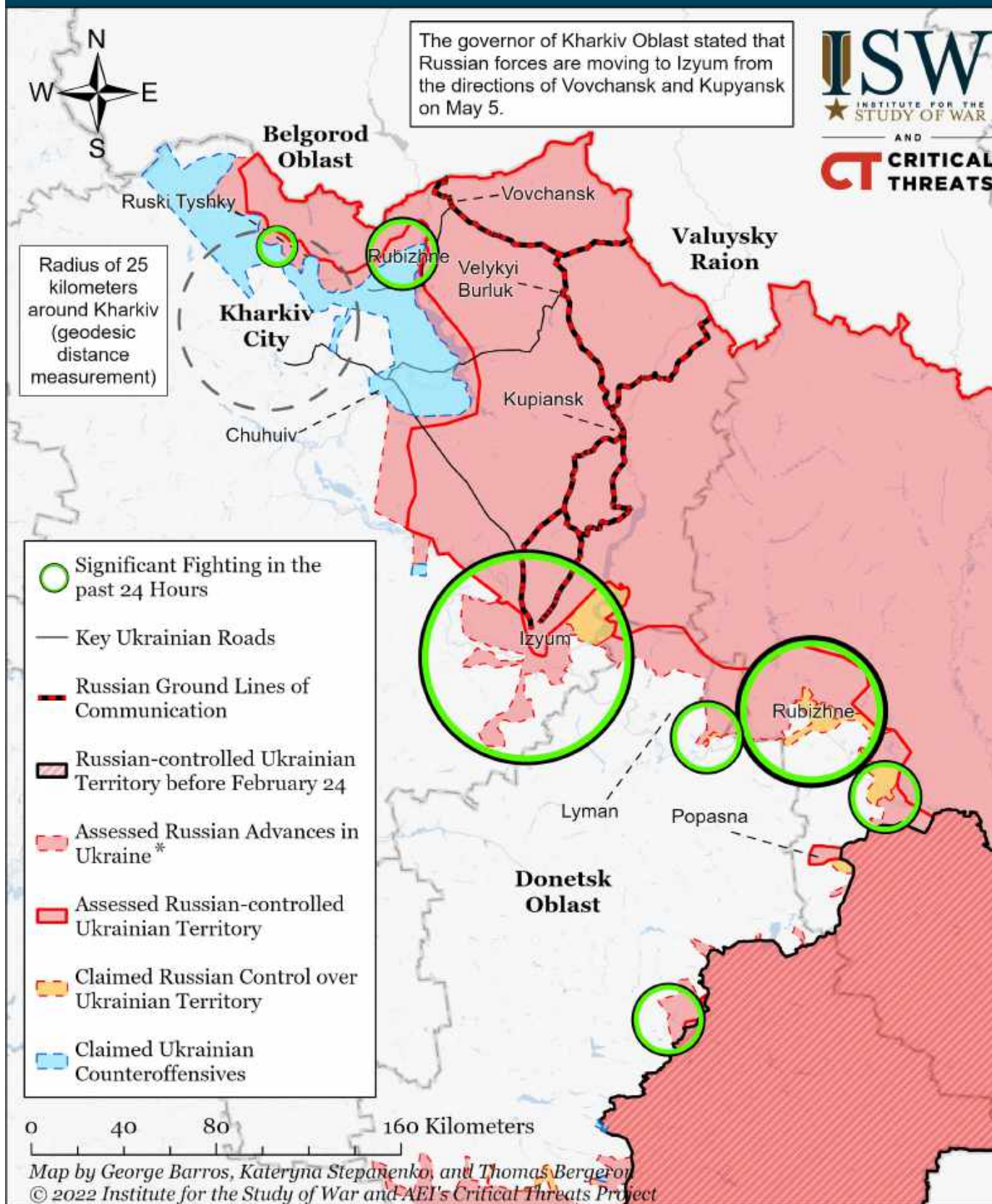
Assessed Control of Terrain Around Kharkiv as of May 11, 2022, 3:00 PM ET



* Assessed Russian advances are areas where ISW assesses Russian forces have operated in or launched attacks against but do not control.

An unconfirmed Russian social media report claimed that Russian forces retreated past Liptsy on May 7, but ISW did not map this report due to the lack of evidence of any withdrawals from villages southwest of Liptsy. The Ukrainian General Staff reported that Russian forces destroyed three bridges near Tsirkuny and Ruski Tyshky on May 7 to slow further Ukrainian counteroffensives. ISW extended are of the Ukrainian counteroffensives to Ruski Tyshky based on Russian shelling of the settlement on May 9. Ukrainian forces recaptured Rubizhne (Kharkiv), Pytomnyk, and Bairak on May 10.

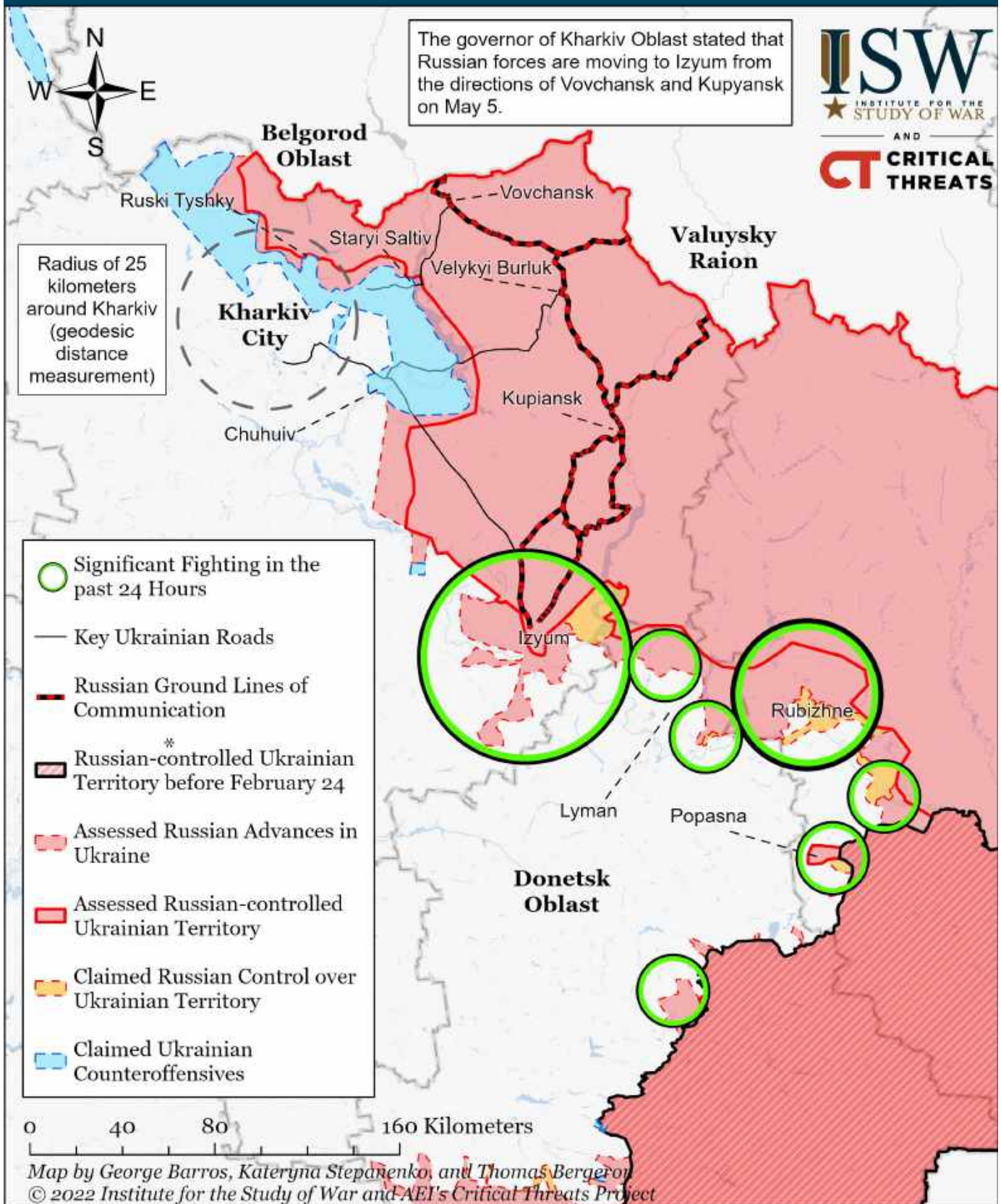
Assessed Control of Terrain Around Kharkiv as of May 10, 2022, 3:00 PM ET



* Assessed Russian advances are areas where ISW assesses Russian forces have operated in or launched attacks against but do not control.

An unconfirmed Russian social media report claimed that Russian forces retreated past Liptsy on May 7, but ISW did not map this report due to the lack of evidence of any withdrawals from villages southwest of Liptsy. The Ukrainian General Staff reported that Russian forces destroyed three bridges near Tsirkuny and Ruski Tyshky on May 7 to slow further Ukrainian counteroffensives. ISW extended are of the Ukrainian counteroffensives to Ruski Tyshky based on Russian shelling of the settlement on May 9. Ukrainian forces recaptured Rubizhne (Kharkiv), Pytomnyk, and Bairak on May 10.

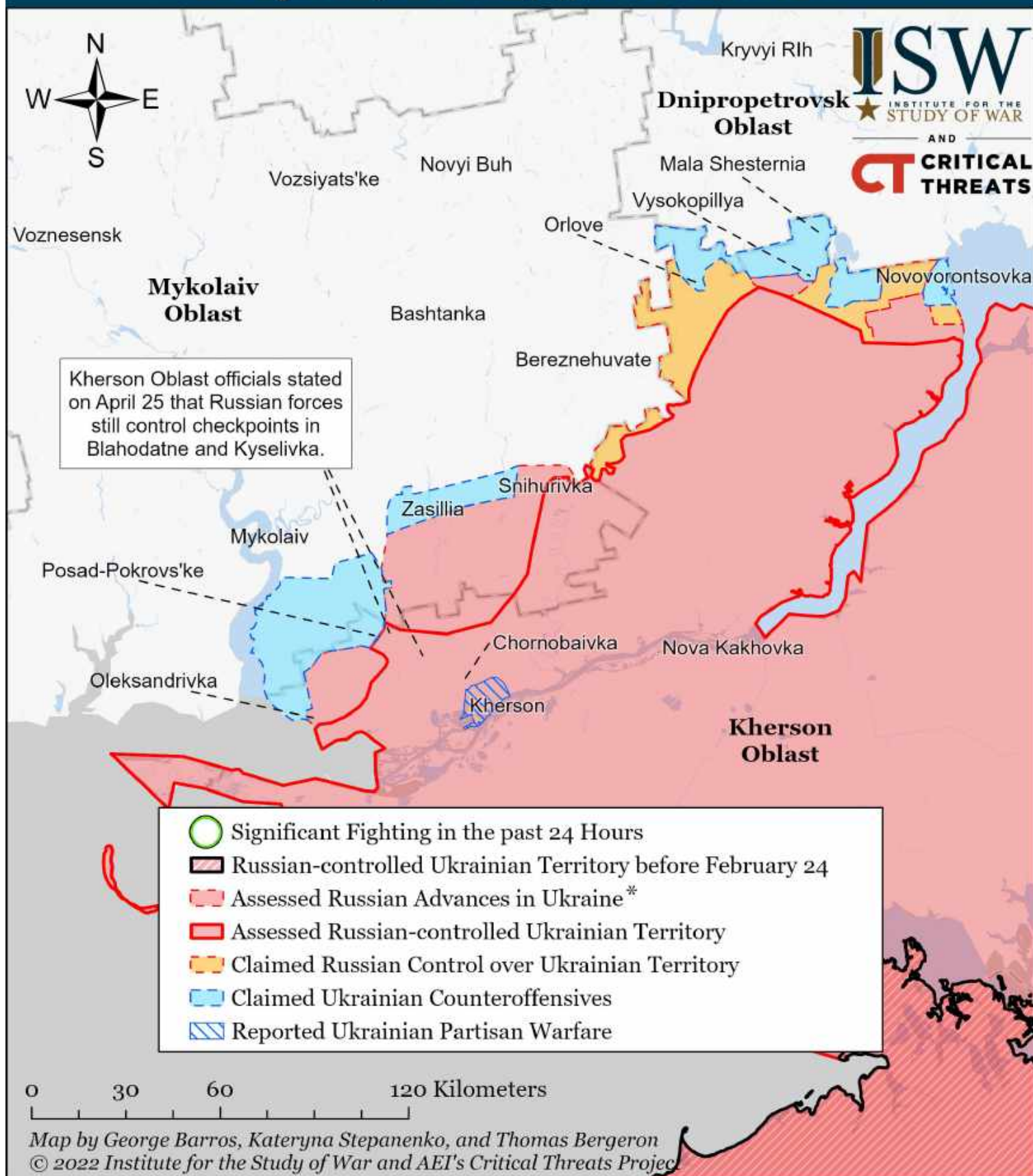
Assessed Control of Terrain Around Kharkiv as of May 9, 2022, 3:00 PM ET



* Assessed Russian advances are areas where ISW assesses Russian forces have operated in or launched attacks against but do not control.

An unconfirmed Russian social media report claimed that Russian forces retreated past Liptsy on May 7, but ISW did not map this report due to the lack of evidence of any withdrawals from villages southwest of Liptsy. The Ukrainian General Staff reported that Russian forces destroyed three bridges near Tsirkuny and Ruski Tyshky on May 7 to slow further Ukrainian counteroffensives. ISW extended the area of the Ukrainian counteroffensives to Ruski Tyshky based on Russian shelling of the settlement on May 9.

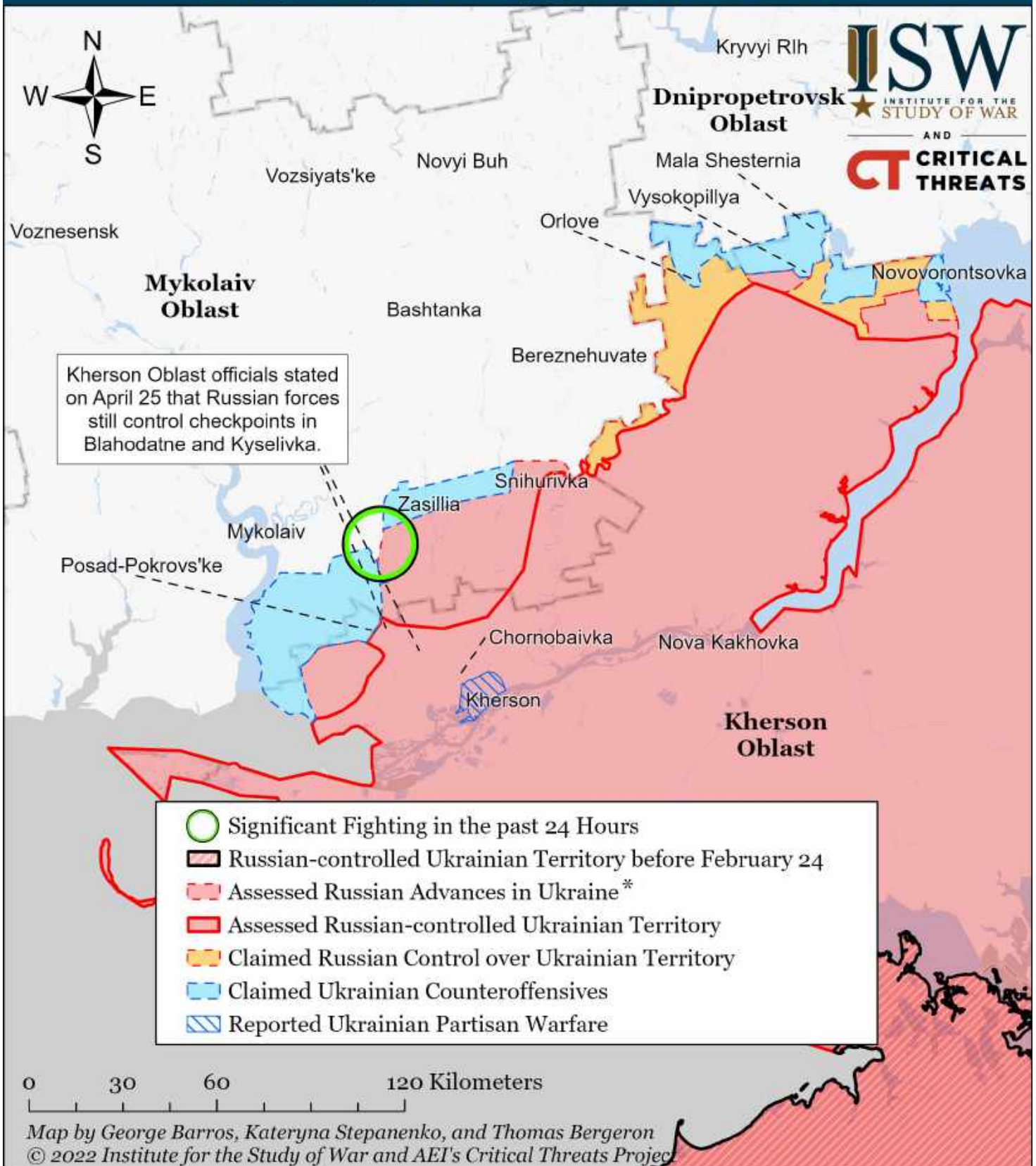
Assessed Control of Terrain Around Kherson and Mykolaiv as of May 12, 2022, 3:00 PM ET



* Assessed Russian advances are areas where ISW assesses Russian forces have operated in or launched attacks against but do not control.

Note: ISW scaled back Ukrainian counteroffensive around Oleksandrivka, Kherson Oblast, based on a geolocated video of a Ukrainian drone attack on a Russian tank on May 11.

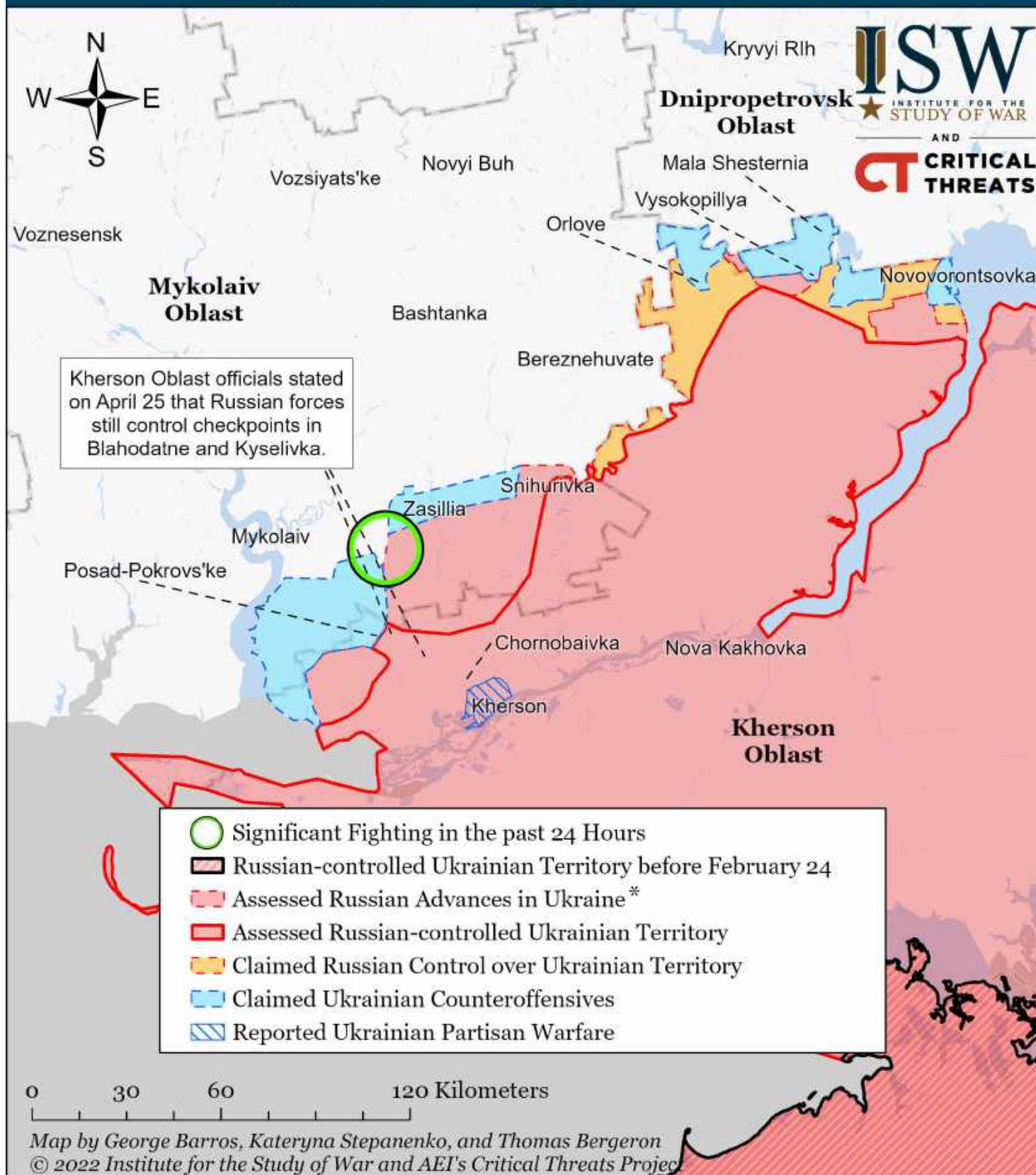
Assessed Control of Terrain Around Kherson and Mykolaiv as of May 11, 2022, 3:00 PM ET



* Assessed Russian advances are areas where ISW assesses Russian forces have operated in or launched attacks against but do not control.

Note: Ukraine's General Staff reported on May 5 that Ukrainian forces regained control over several unspecified settlements on the border of Mykolaiv and Kherson oblasts. Ukrainian forces also announced regaining control over four unspecified villages along the Kherson-Mykolaiv border on May 3. This was insufficient evidence and information to update our maps. The locations of these settlements is still unknown as of this publication. ISW will update our map once open sources name the liberated settlements.

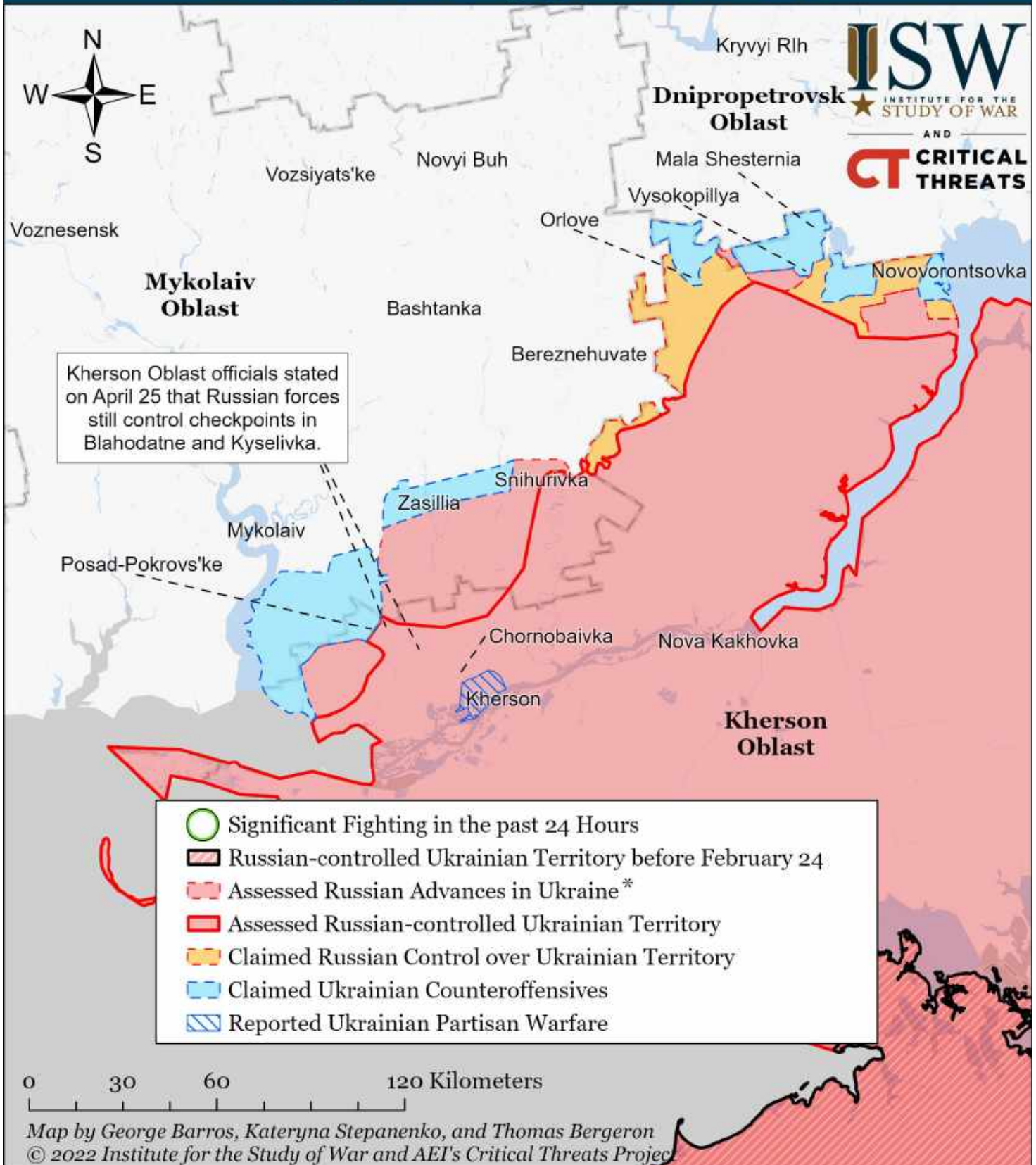
Assessed Control of Terrain Around Kherson and Mykolaiv as of May 10, 2022, 3:00 PM ET



* Assessed Russian advances are areas where ISW assesses Russian forces have operated in or launched attacks against but do not control.

Note: Ukraine's General Staff reported on May 5 that Ukrainian forces regained control over several unspecified settlements on the border of Mykolaiv and Kherson oblasts. Ukrainian forces also announced regaining control over four unspecified villages along the Kherson-Mykolaiv border on May 3. This was insufficient evidence and information to update our maps. The locations of these settlements is still unknown as of this publication. ISW will update our map once open sources name the liberated settlements.

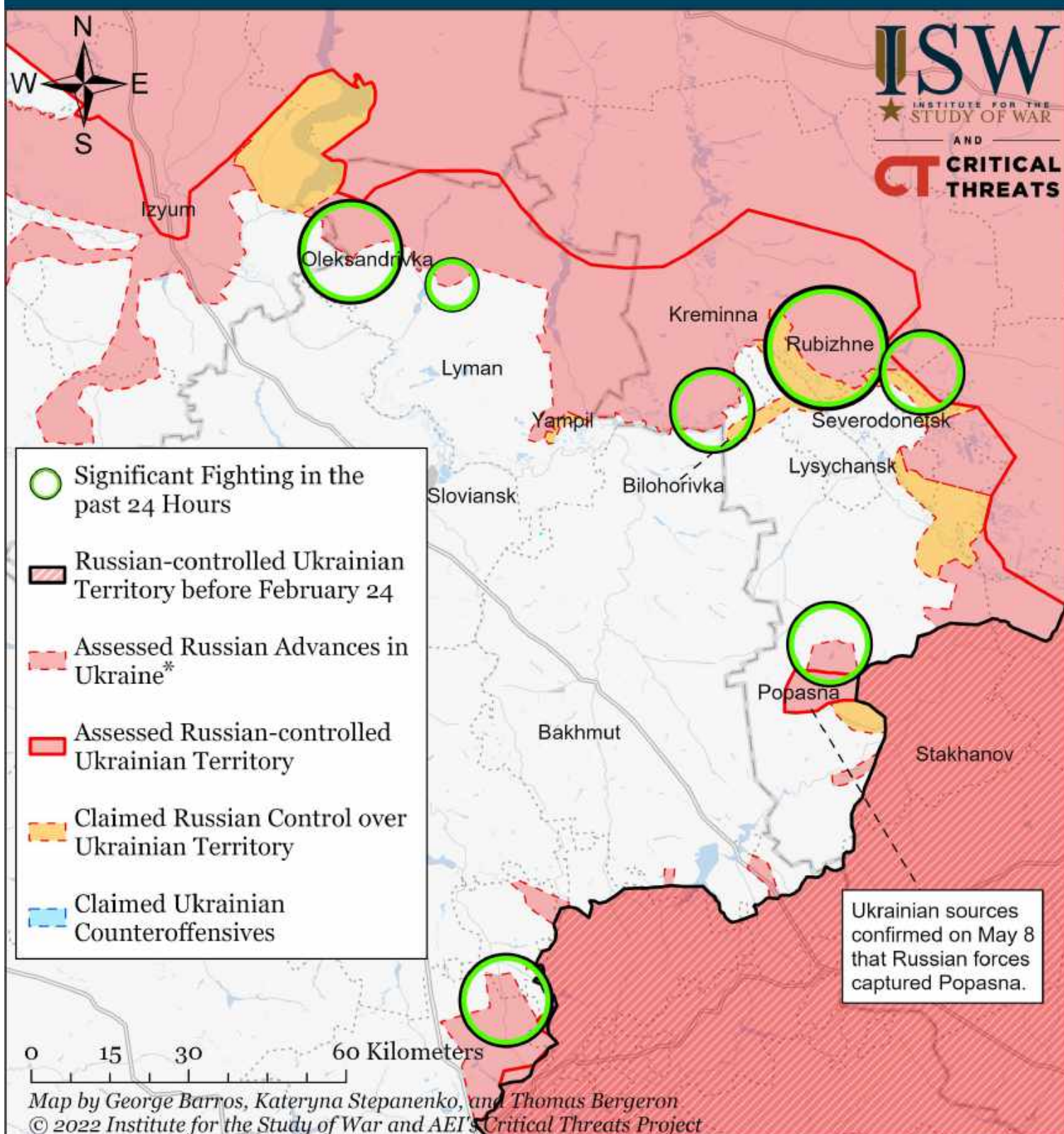
Assessed Control of Terrain Around Kherson and Mykolaiv as of May 9, 2022, 3:00 PM ET



* Assessed Russian advances are areas where ISW assesses Russian forces have operated in or launched attacks against but do not control.

Note: Ukraine's General Staff reported on May 5 that Ukrainian forces regained control over several unspecified settlements on the border of Mykolaiv and Kherson oblasts. Ukrainian forces also announced regaining control over four unspecified villages along the Kherson-Mykolaiv border on May 3. This was insufficient evidence and information to update our maps. The locations of these settlements is still unknown as of this publication. ISW will update our map once open sources name the liberated settlements.

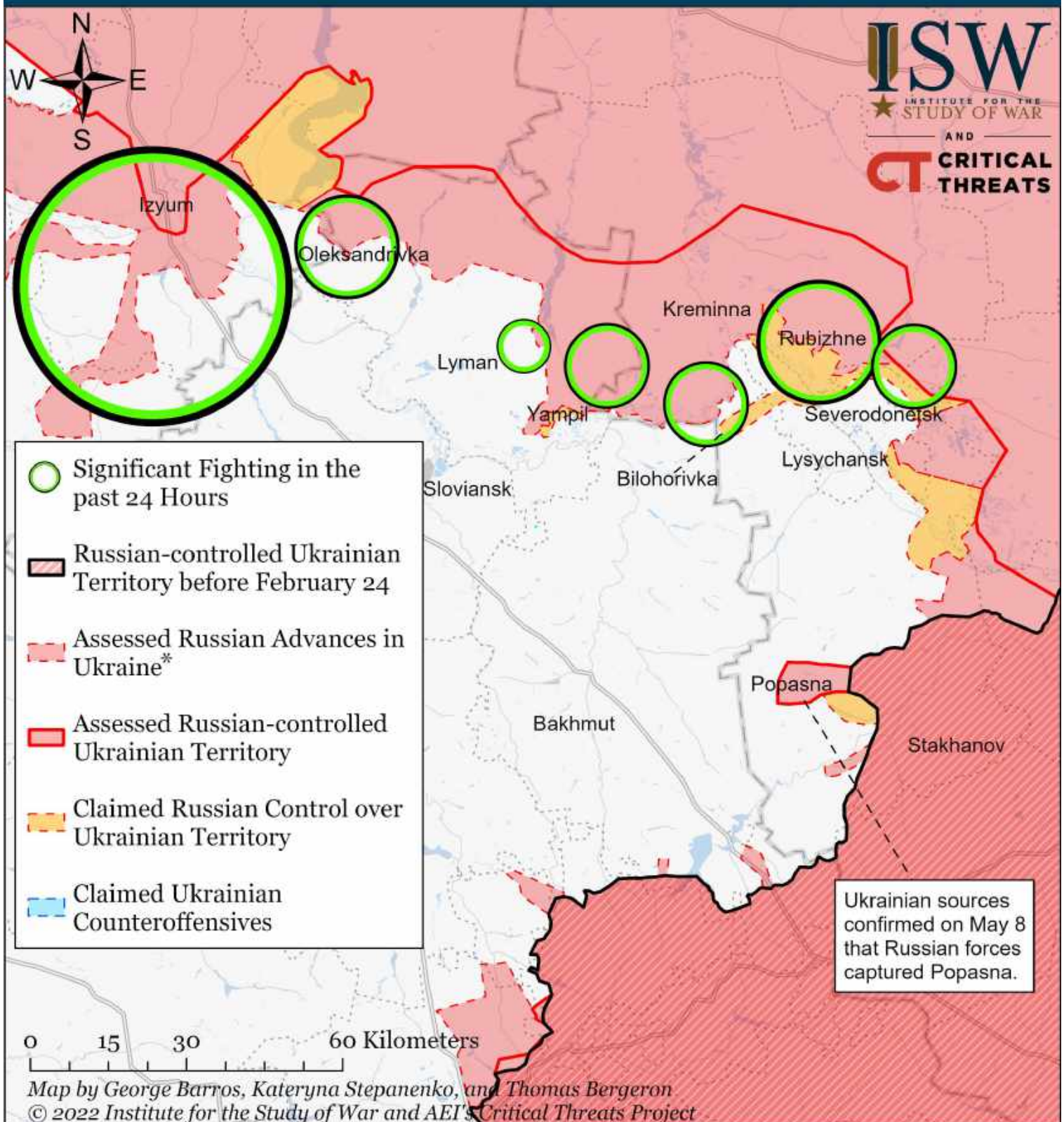
Assessed Control of Terrain Around Luhansk as of May 12, 2022, 3:00 PM ET



* Assessed Russian advances are areas where ISW assesses Russian forces have operated in or launched attacks against but do not control.

Note: We have expanded Russian assessed advances to Rubizhne and Voevodivka based on Ukrainian local administration reports that Russian forces seized the settlements on May 12.

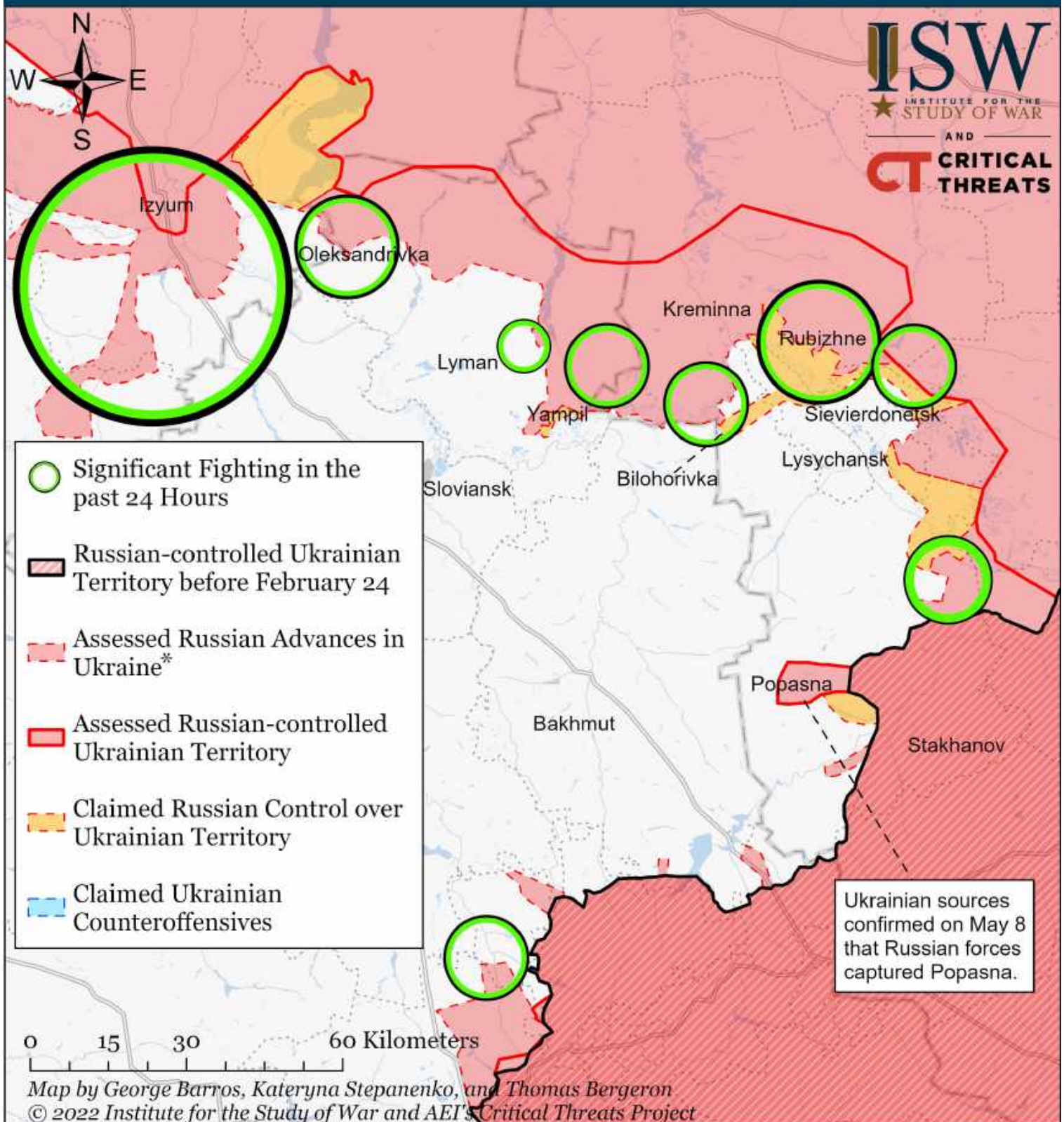
Assessed Control of Terrain Around Luhansk as of May 11, 2022, 3:00 PM ET



* Assessed Russian advances are areas where ISW assesses Russian forces have operated in or launched attacks against but do not control.

Note: We have recessed Russian assessed advances across the Seversky Donetsk River from Pryvillia to Bilohorivka after Ukrainian forces destroyed a Russian pontoon bridge to Bilohorivka on May 9.

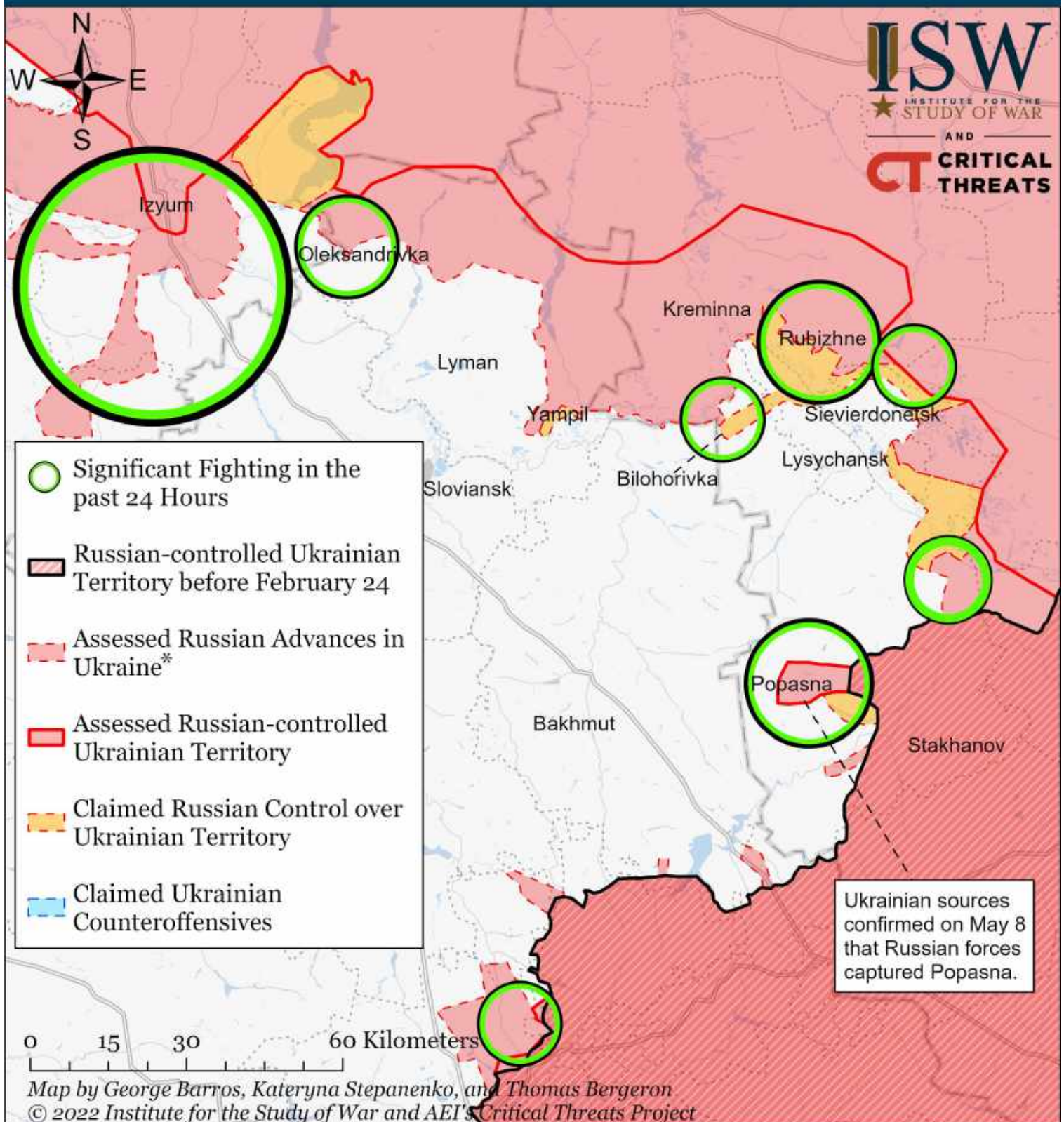
Assessed Control of Terrain Around Luhansk as of May 10, 2022, 3:00 PM ET



* Assessed Russian advances are areas where ISW assesses Russian forces have operated in or launched attacks against but do not control.

Note: We have expanded Russian assessed advances from Kreminna to the outskirts of Bilohorivka after Ukrainian and Russian sources confirmed that Russian forces crossed Seversky Donets River via pontoon bridge to Bilohorivka on May 9. Ukrainian forces reportedly destroyed this pontoon bridge and are clearing Russian forces near Bilohorivka as of May 10.

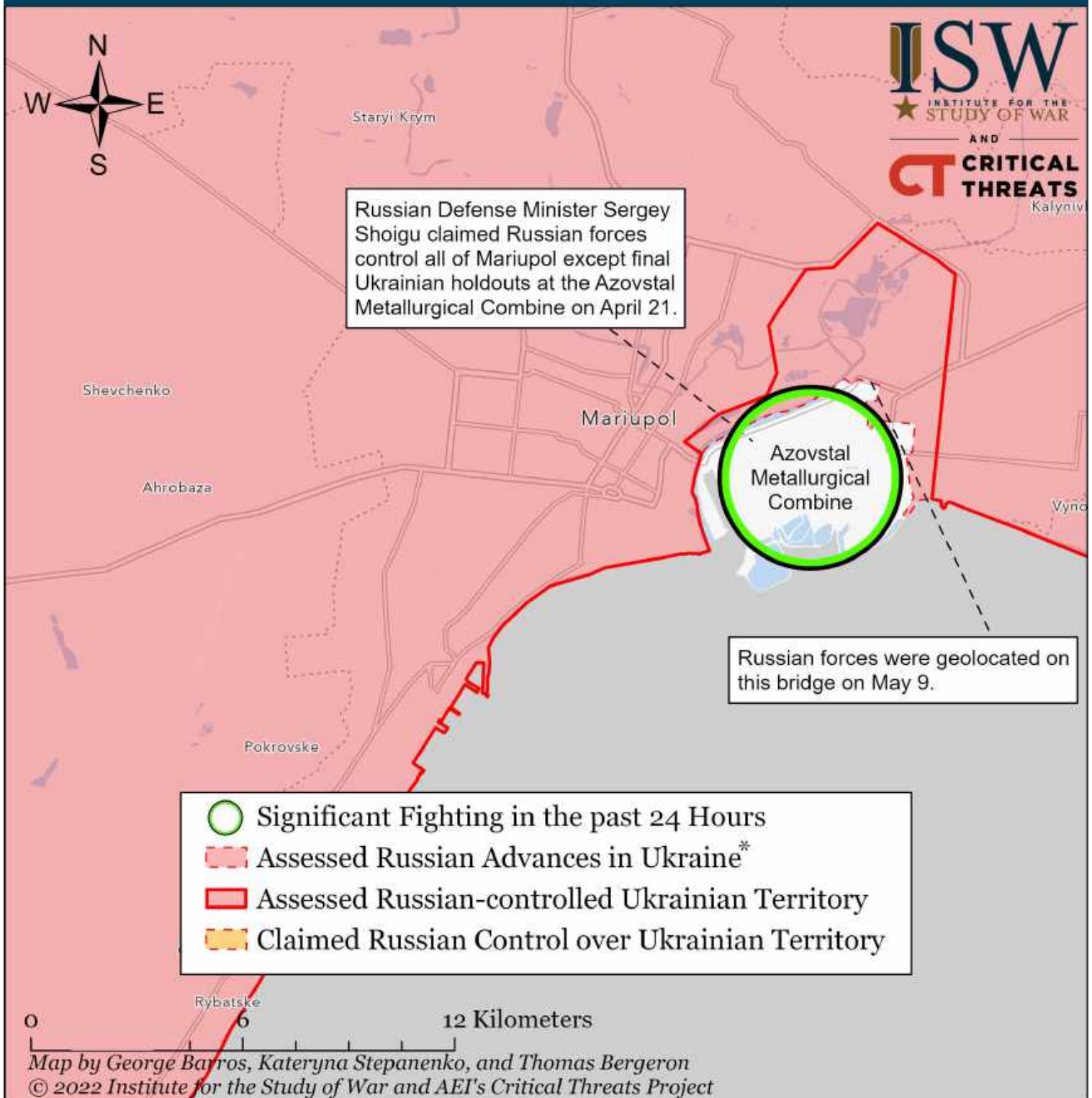
Assessed Control of Terrain Around Luhansk as of May 9, 2022, 3:00 PM ET



* Assessed Russian advances are areas where ISW assesses Russian forces have operated in or launched attacks against but do not control.

Note: We have expanded Russian assessed advances from Kreminna to the outskirts of Bilohorivka after Ukrainian and Russian sources confirmed that Russian forces crossed the Severskyi Donets River via pontoon bridge to Bilohorivka on May 9.

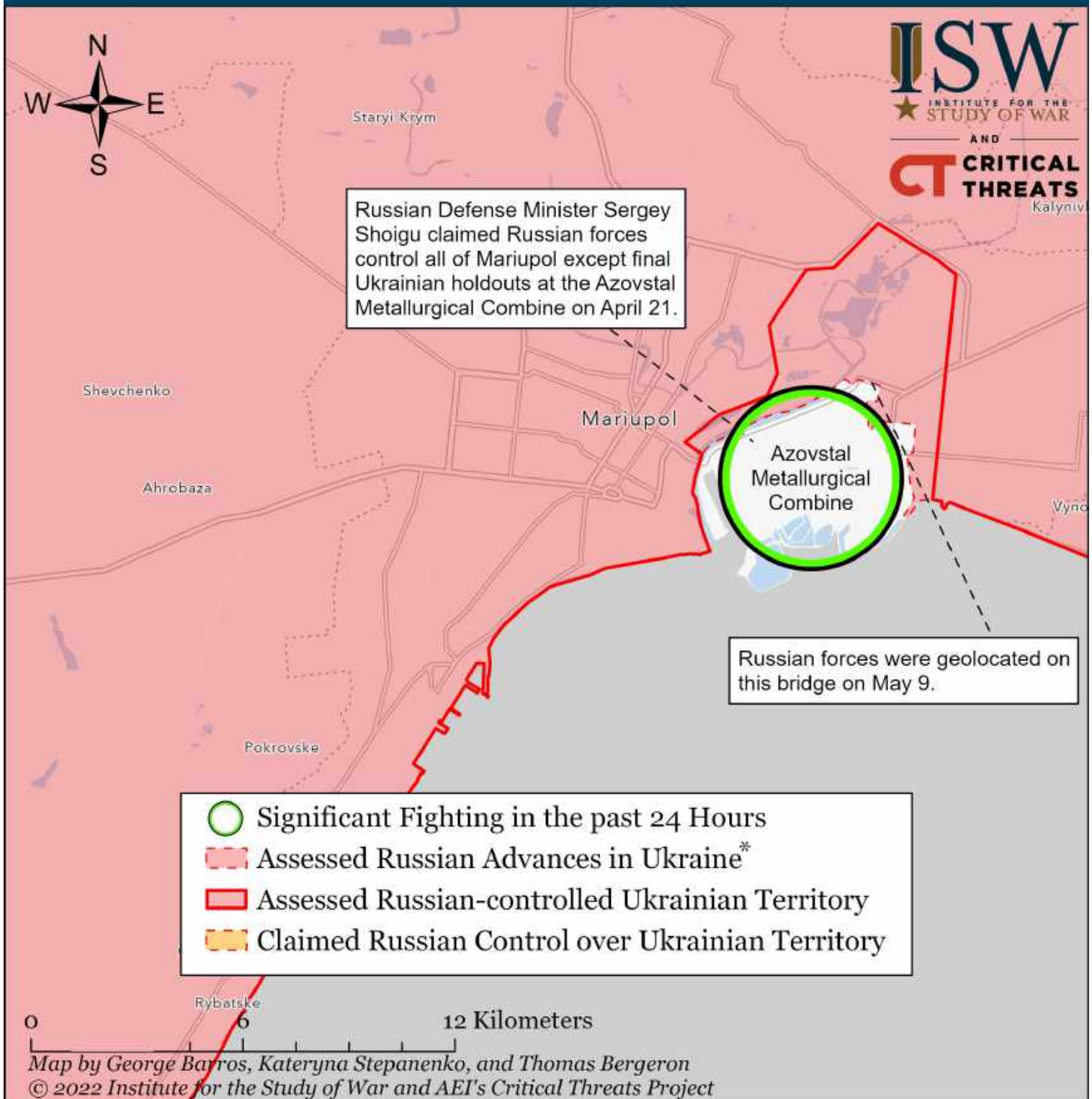
Assessed Control of Terrain Around Mariupol as of May 12, 2022, 3:00 PM ET



The Kremlin declared victory in Mariupol on April 21 after capturing the city besides Ukrainian holdouts in the encircled Azovstal Metallurgical Combine. Russian forces reportedly conducted an assault on the remaining Ukrainian defenders at Azovstal on May 4. The Kremlin will spin the (still incomplete) capture of Mariupol into a major victory in Ukraine to compensate for stalled or failed Russian offensives elsewhere. ISW recoded Russian claimed control over the northwestern outskirts of Azovstal to Russian assessed advance based on geolocated videos of Russian forces operating in the area on May 9.

* Assessed Russian advances are areas where ISW assesses Russian forces have operated in or launched attacks against but do not control.

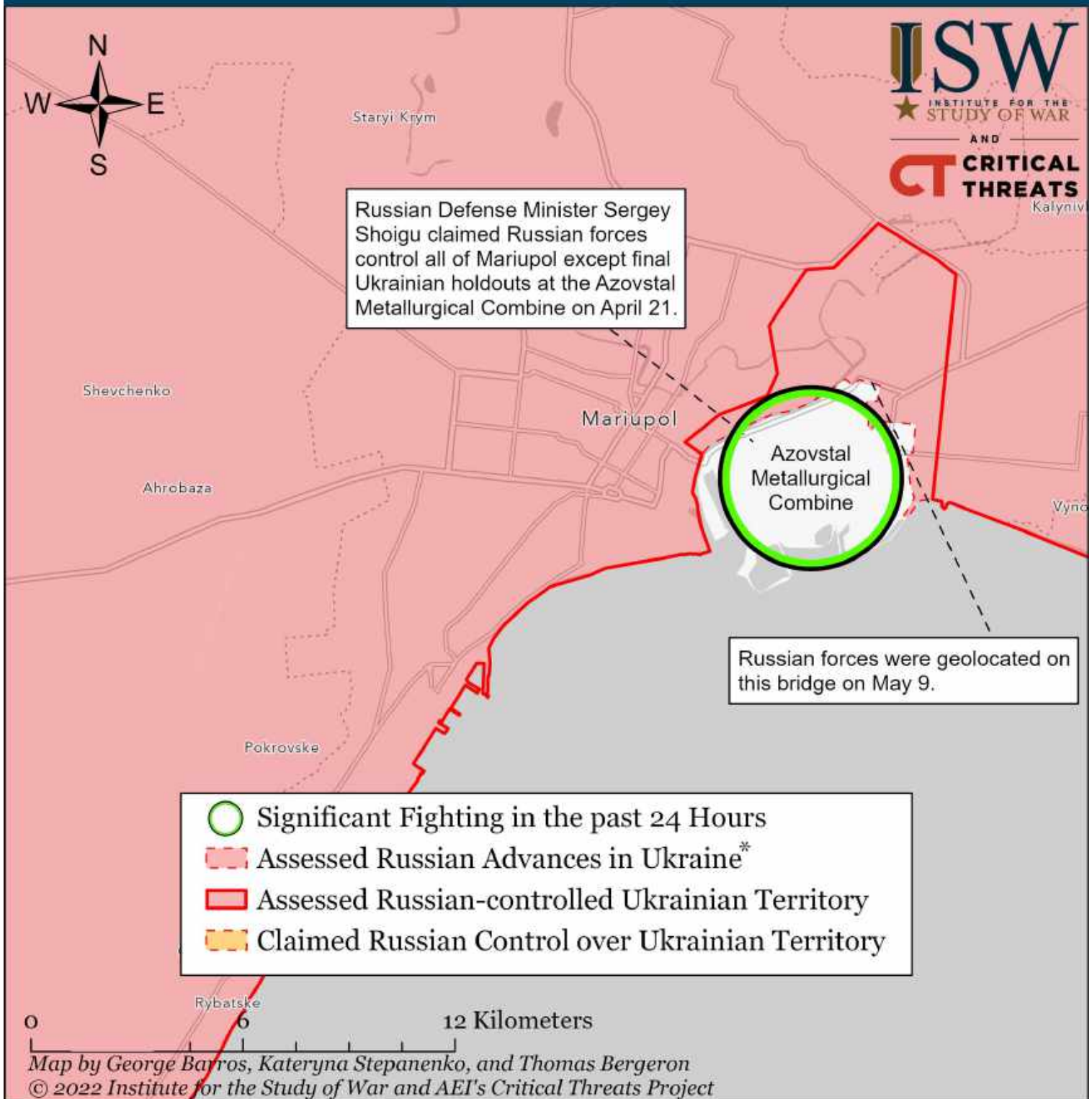
Assessed Control of Terrain Around Mariupol as of May 11, 2022, 3:00 PM ET



The Kremlin declared victory in Mariupol on April 21 after capturing the city besides Ukrainian holdouts in the encircled Azovstal Metallurgical Combine. Russian forces reportedly conducted an assault on the remaining Ukrainian defenders at Azovstal on May 4. The Kremlin will spin the (still incomplete) capture of Mariupol into a major victory in Ukraine to compensate for stalled or failed Russian offensives elsewhere. ISW recoded Russian claimed control over northwestern outskirts of Azovstal to Russian assessed advance based on geolocated videos of Russian forces operating in the area on May 9.

* Assessed Russian advances are areas where ISW assesses Russian forces have operated in or launched attacks against but do not control.

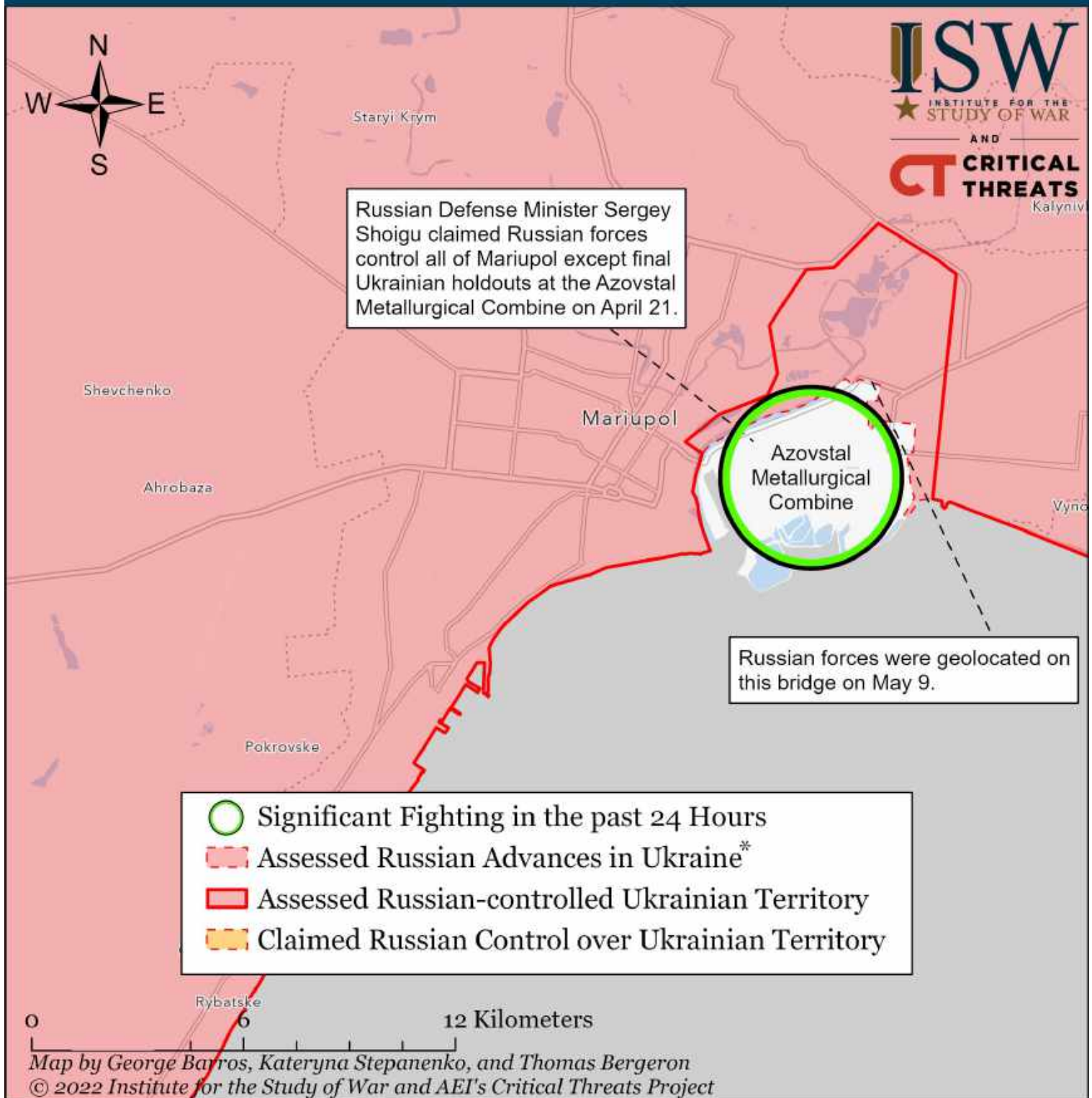
Assessed Control of Terrain Around Mariupol as of May 10, 2022, 3:00 PM ET



The Kremlin declared victory in Mariupol on April 21 after capturing the city besides Ukrainian holdouts in the encircled Azovstal Metallurgical Combine. Russian forces reportedly conducted an assault on the remaining Ukrainian defenders at Azovstal on May 4. The Kremlin will spin the (still incomplete) capture of Mariupol into a major victory in Ukraine to compensate for stalled or failed Russian offensives elsewhere. ISW recoded Russian claimed control over northwestern outskirts of Azovstal to Russian assessed advance based on geolocated videos of Russian forces operating in the area on May 9.

* Assessed Russian advances are areas where ISW assesses Russian forces have operated in or launched attacks against but do not control.

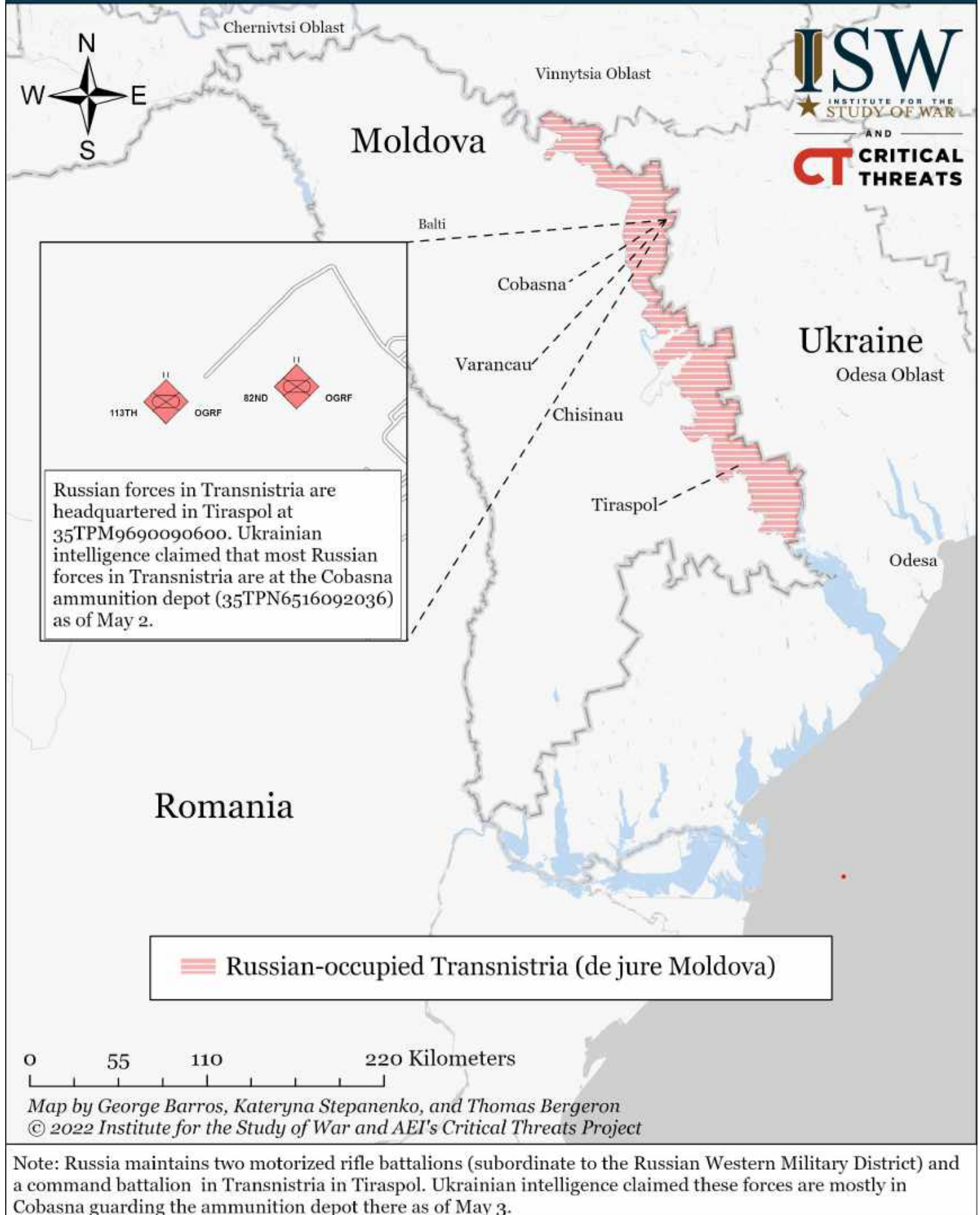
Assessed Control of Terrain Around Mariupol as of May 9, 2022, 3:00 PM ET



The Kremlin declared victory in Mariupol on April 21 after capturing the city besides Ukrainian holdouts in the encircled Azovstal Metallurgical Combine. Russian forces reportedly conducted an assault on the remaining Ukrainian defenders at Azovstal on May 4. The Kremlin will spin the (still incomplete) capture of Mariupol into a major victory in Ukraine to compensate for stalled or failed Russian offensives elsewhere. ISW recoded Russian claimed control over the northwestern outskirts of Azovstal to Russian assessed advance based on geolocated videos of Russian forces operating in the area on May 9.

* Assessed Russian advances are areas where ISW assesses Russian forces have operated in or launched attacks against but do not control.

Moldova Situational Map as of May 11, 2022, 3:00 PM ET



Moldova Situational Map as of May 10, 2022, 3:00 PM ET

