

Assessed Control of Terrain in Ukraine and Main Russian Maneuver Axes as of May 16, 2022, 3:00 PM ET



Map by George Barros, Kateryna Stepanenko, Thomas Bergeron
© 2022 Institute for the Study of War and AEI's Critical Threats Project

* Assessed Russian advances are areas where ISW assesses Russian forces have operated in or launched attacks against but do not control.

Assessed Control of Terrain in Ukraine and Main Russian Maneuver Axes as of May 15, 2022, 3:00 PM ET



* Assessed Russian advances are areas where ISW assesses Russian forces have operated in or launched attacks against but do not control.

Assessed Control of Terrain in Ukraine and Main Russian Maneuver Axes as of May 14, 2022, 3:00 PM ET



Map by George Barros, Kateryna Stepanenko, Thomas Bergeron, and Ezgi Yazici
© 2022 Institute for the Study of War and AEI's Critical Threats Project

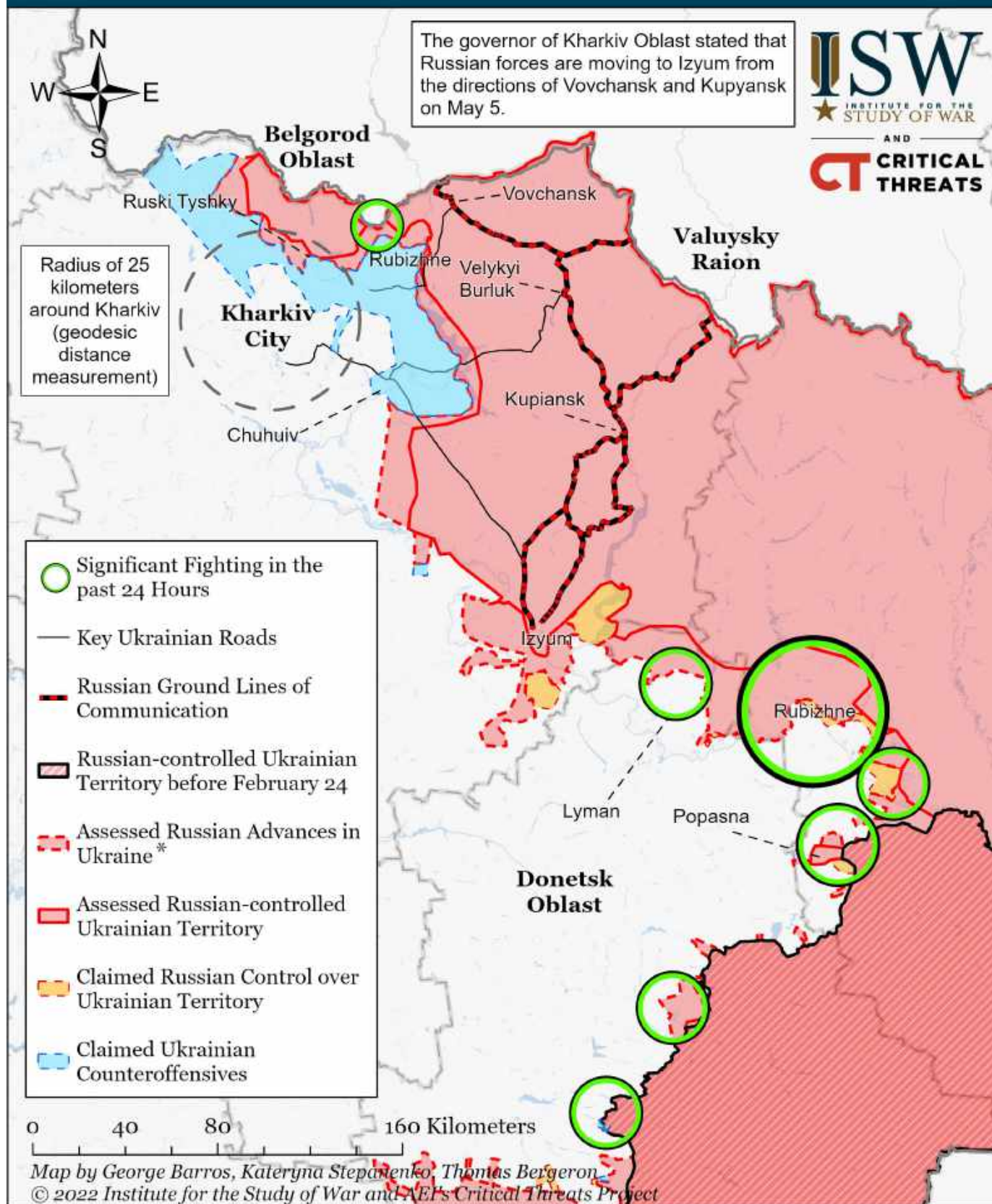
* Assessed Russian advances are areas where ISW assesses Russian forces have operated in or launched attacks against but do not control.

Assessed Control of Terrain in Ukraine and Main Russian Maneuver Axes as of May 13, 2022, 3:00 PM ET



* Assessed Russian advances are areas where ISW assesses Russian forces have operated in or launched attacks against but do not control.

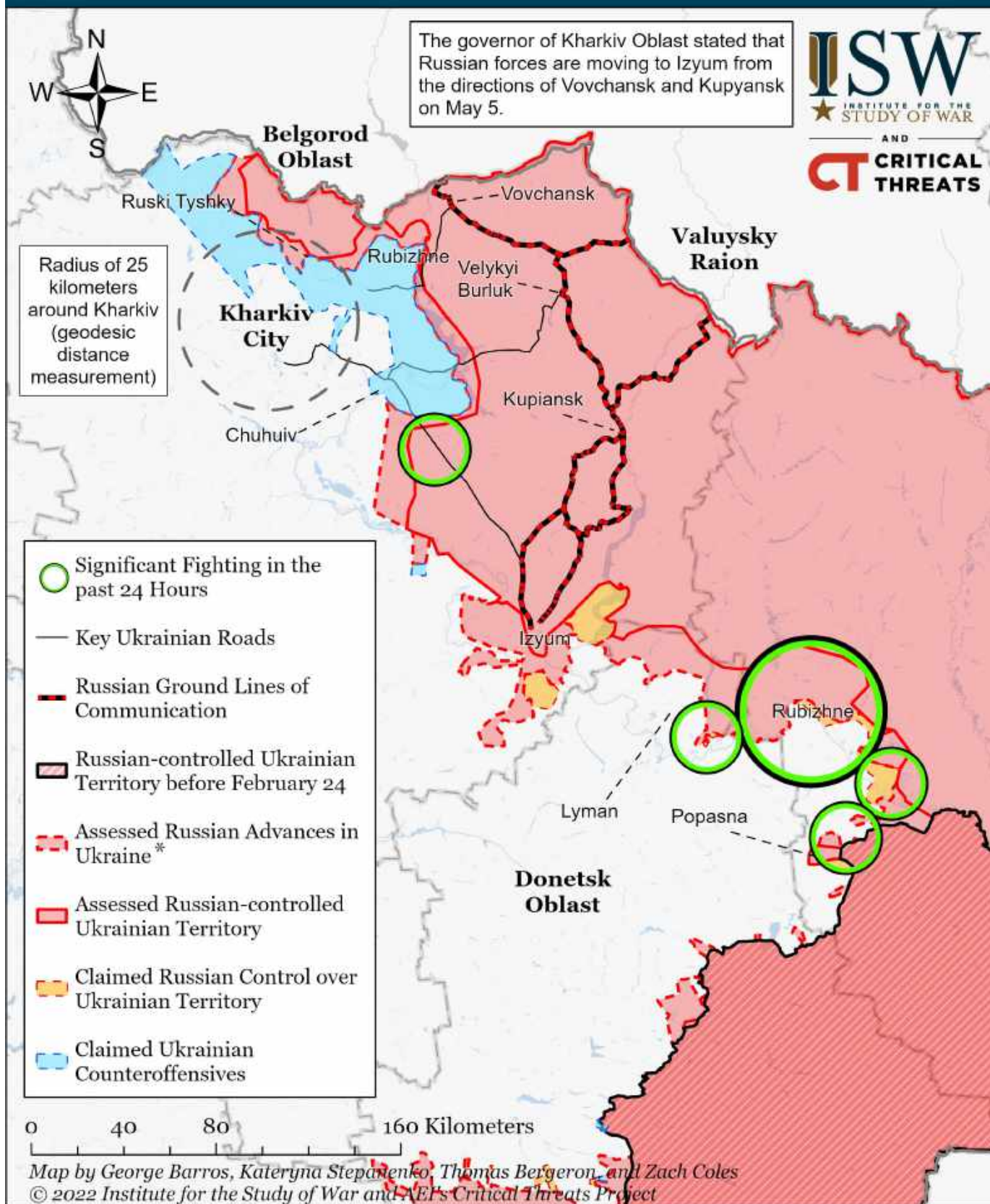
Assessed Control of Terrain Around Kharkiv as of May 16, 2022, 3:00 PM ET



* Assessed Russian advances are areas where ISW assesses Russian forces have operated in or launched attacks against but do not control.

Ukrainian forces recaptured Rubizhne (Kharkiv), Pytomnyk, and Bairak on May 10. We extended Ukrainian counteroffensives to Petrivka and Ternova in Kharkiv Oblast given that the Ukrainian General Staff reported that Russian forces shelled these towns on May 13, confirming reports that Ukrainian forces retook them. Ukrainian sources reported that Ukrainian forces liberated an unnamed village near the Russian border on May 14. ISW will change our maps once open sources name the settlement.

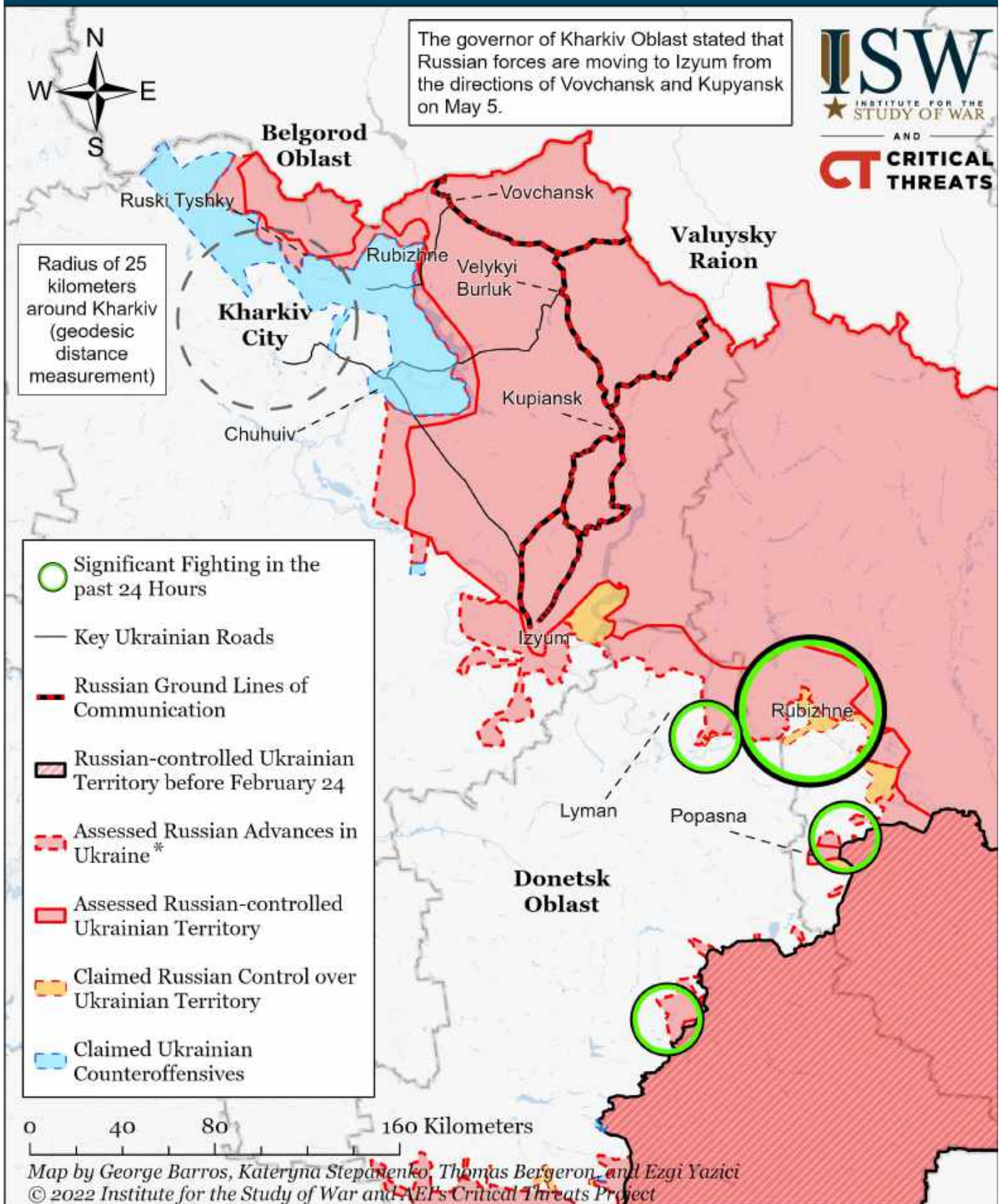
Assessed Control of Terrain Around Kharkiv as of May 15, 2022, 3:00 PM ET



* Assessed Russian advances are areas where ISW assesses Russian forces have operated in or launched attacks against but do not control.

Ukrainian forces recaptured Rubizhne (Kharkiv), Pytomnyk, and Bairak on May 10. We extended Ukrainian counteroffensives to Petrivka and Ternova in Kharkiv Oblast given that the Ukrainian General Staff reported that Russian forces shelled these towns on May 13, confirming reports that Ukrainian forces retook them. Ukrainian sources reported that Ukrainian forces liberated an unnamed village near the Russian border on May 14. ISW will change our maps once open sources name the settlement.

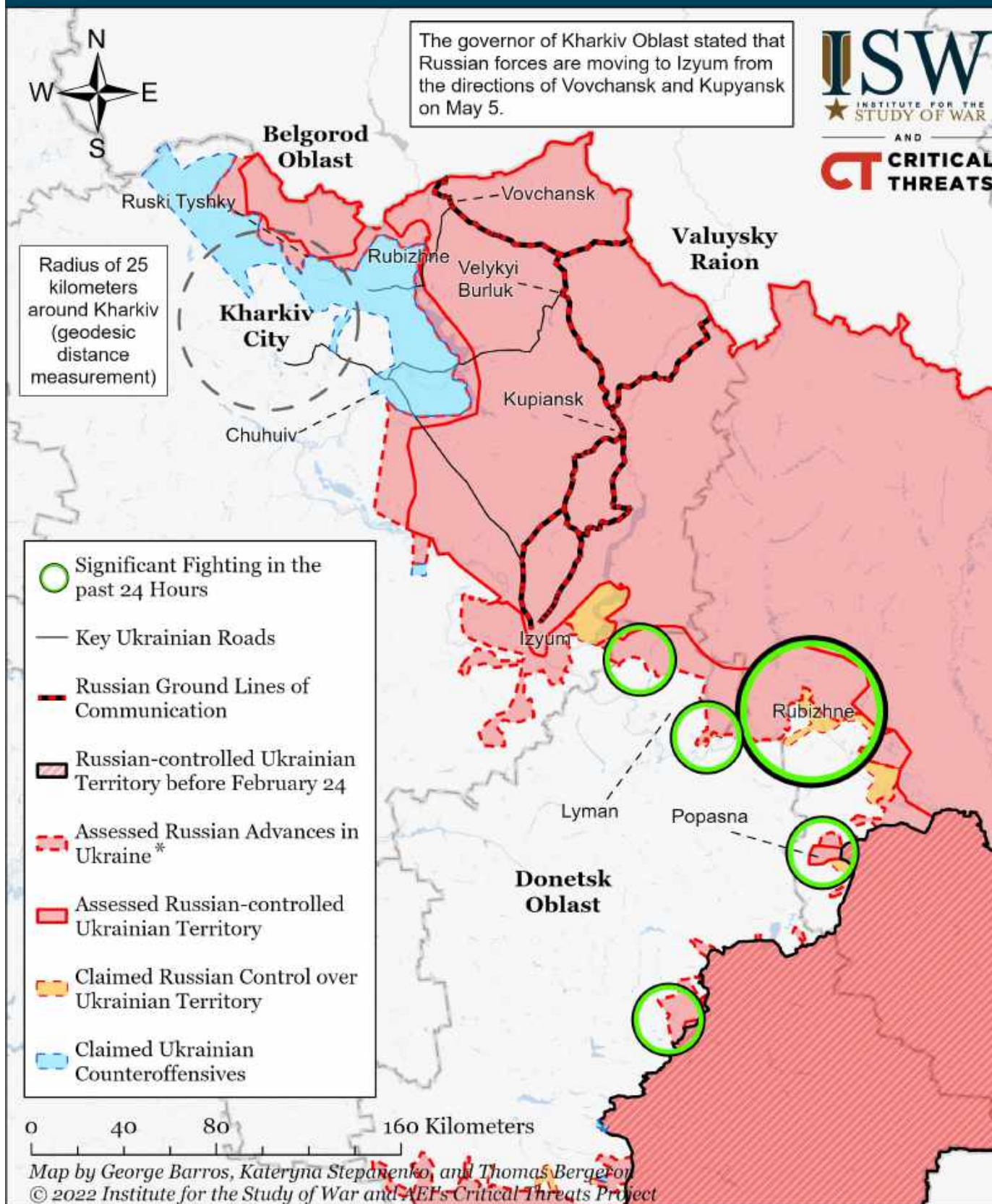
Assessed Control of Terrain Around Kharkiv as of May 14, 2022, 3:00 PM ET



* Assessed Russian advances are areas where ISW assesses Russian forces have operated in or launched attacks against but do not control.

Ukrainian forces recaptured Rubizhne (Kharkiv), Pytomnyk, and Bairak on May 10. We extended Ukrainian counteroffensives to Petrivka and Ternova in Kharkiv Oblast given that the Ukrainian General Staff reported that Russian forces shelled these towns on May 13, confirming reports that Ukrainian forces retook them. Ukrainian sources reported that Ukrainian forces liberated an unnamed village near the Russian border on May 14. ISW will change our maps once open sources name the settlement.

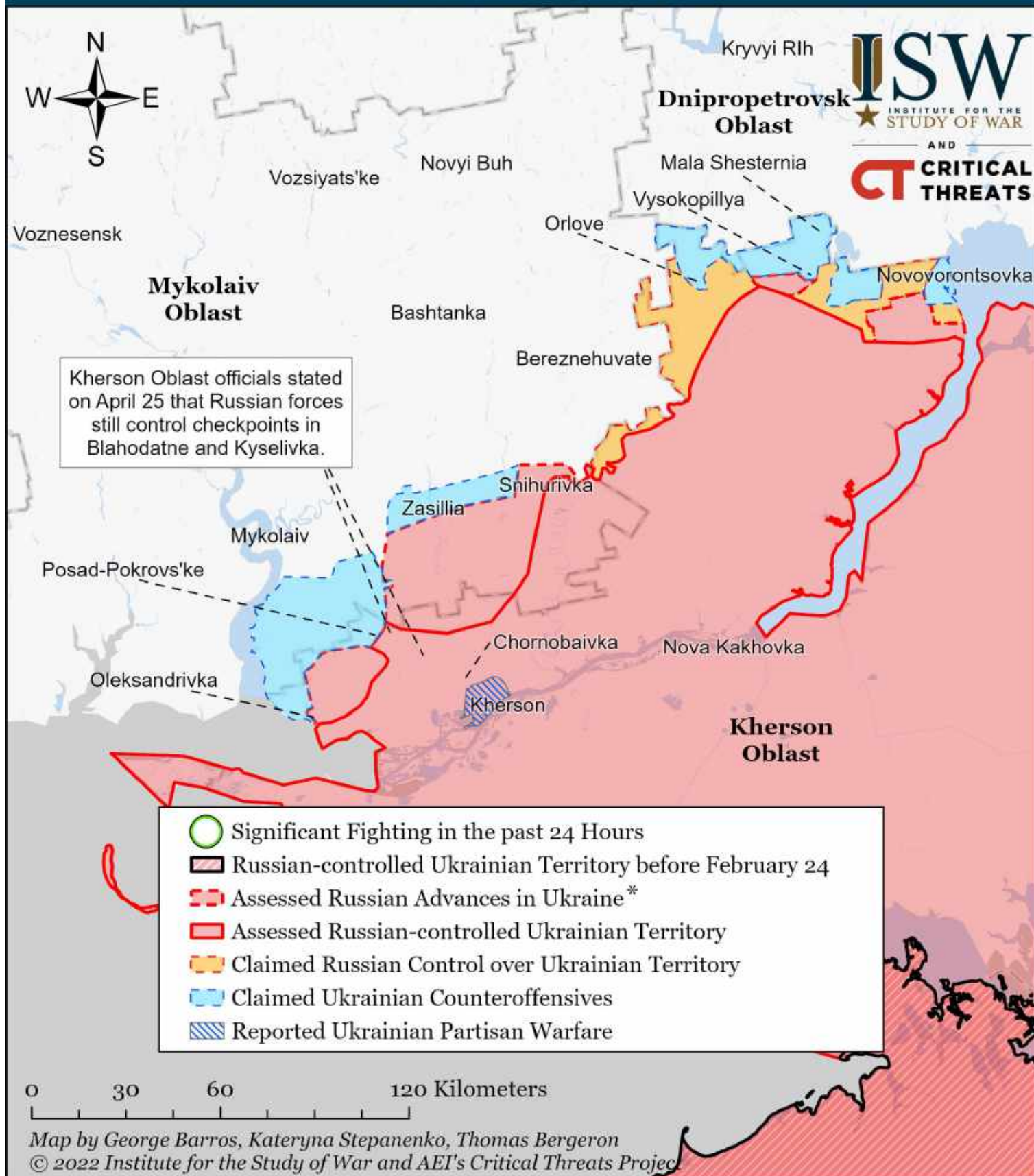
Assessed Control of Terrain Around Kharkiv as of May 13, 2022, 3:00 PM ET



* Assessed Russian advances are areas where ISW assesses Russian forces have operated in or launched attacks against but do not control.

ISW extended the Ukrainian counteroffensives to Ruski Tyshky based on Russian shelling of the settlement on May 9. Ukrainian forces recaptured Rubizhne (Kharkiv), Pytomnyk, and Bairak on May 10. We extended Ukrainian counteroffensives to Petrivka and Ternova in Kharkiv Oblast given that the Ukrainian General Staff reported that Russian forces shelled these towns on May 13, confirming reports that Ukrainian forces retook them.

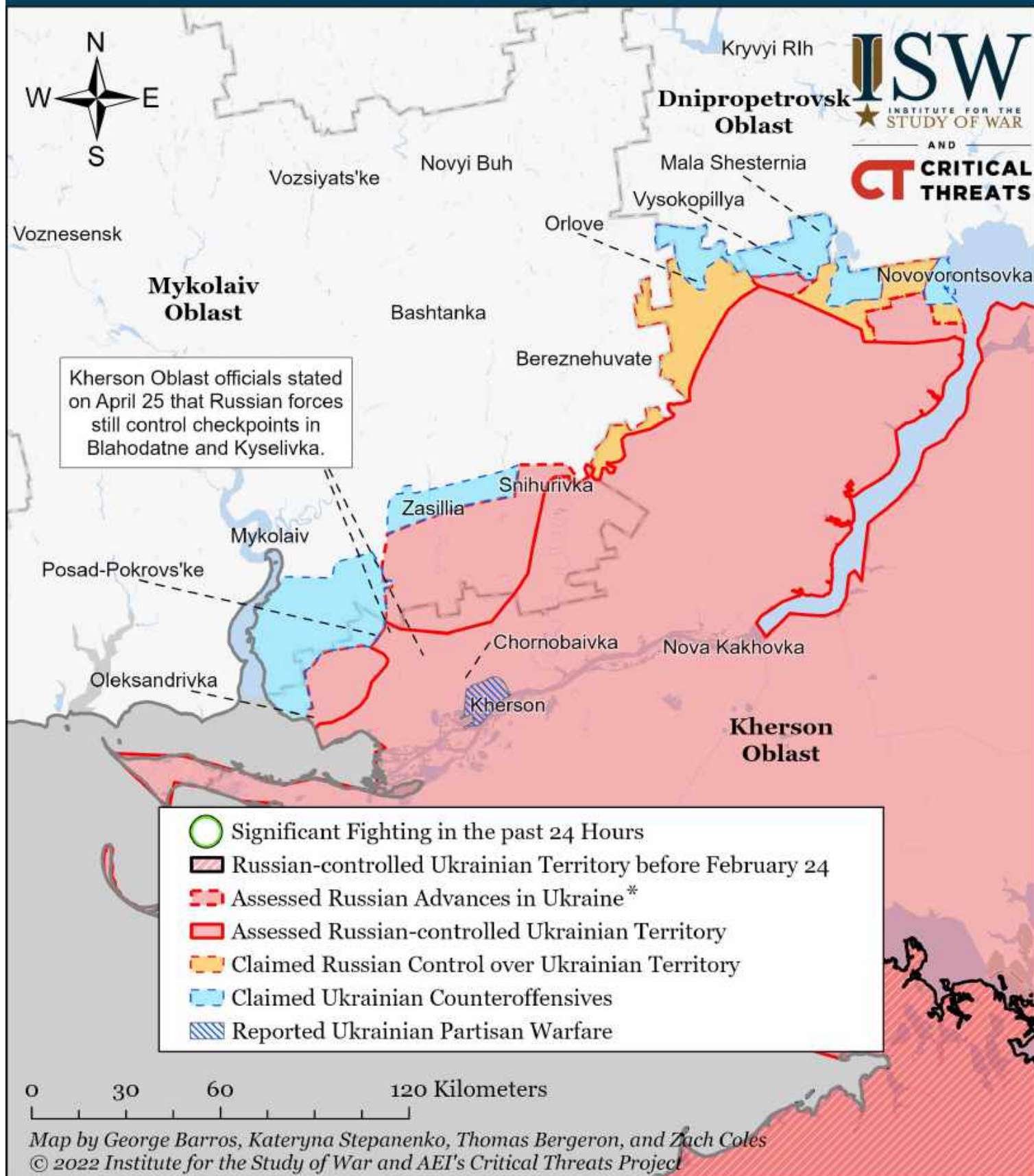
Assessed Control of Terrain Around Kherson and Mykolaiv as of May 16, 2022, 3:00 PM ET



* Assessed Russian advances are areas where ISW assesses Russian forces have operated in or launched attacks against but do not control.

Note: ISW extended Ukrainian counteroffensives around Oleksandrivka, Kherson Oblast, based on reports of Russian artillery fire in the area on May 16.

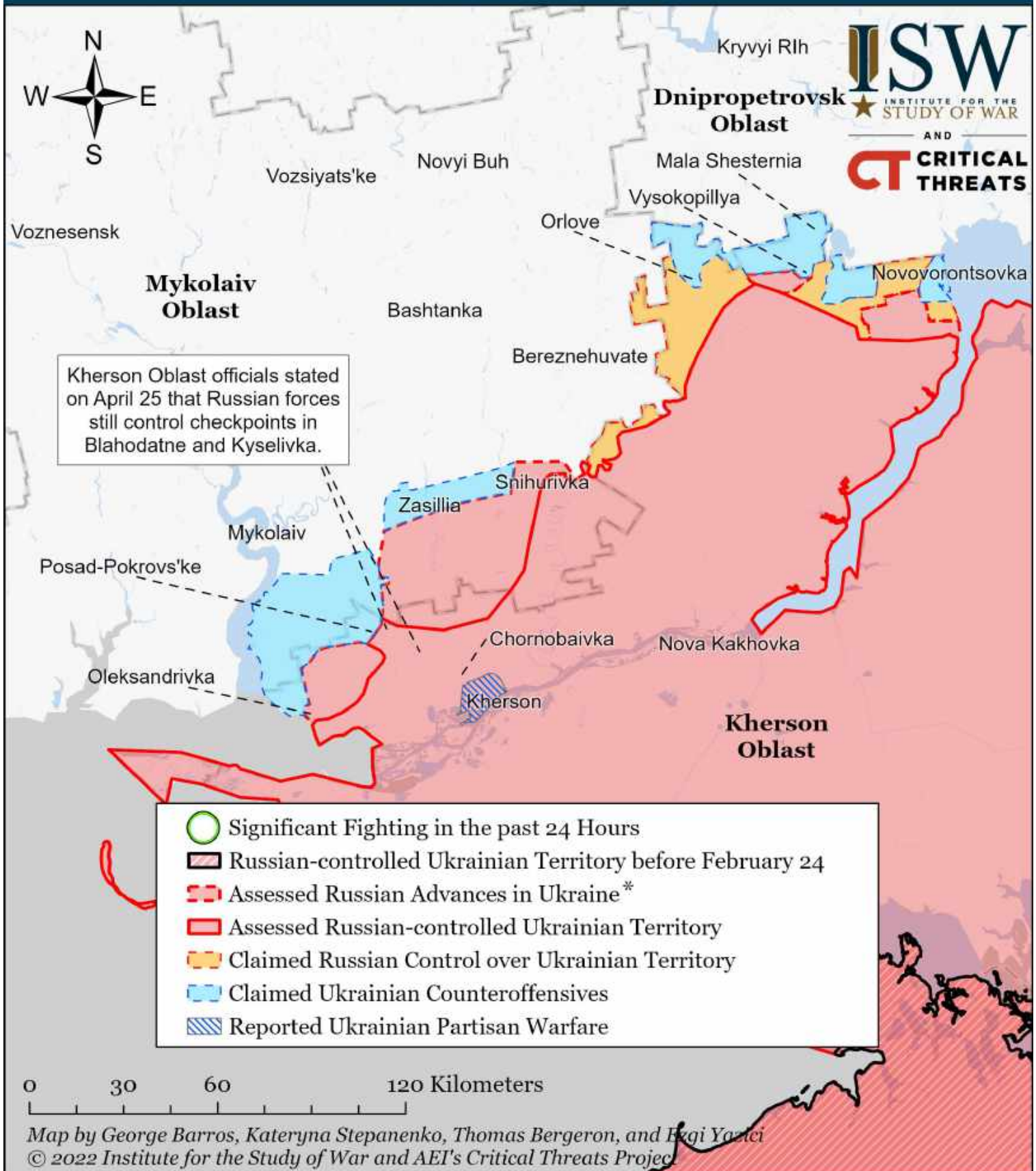
Assessed Control of Terrain Around Kherson and Mykolaiv as of May 15, 2022, 3:00 PM ET



* Assessed Russian advances are areas where ISW assesses Russian forces have operated in or launched attacks against but do not control.

Note: ISW scaled back the Ukrainian counteroffensive around Oleksandrivka, Kherson Oblast, based on a geolocated video of a Ukrainian drone attack on a Russian tank on May 11.

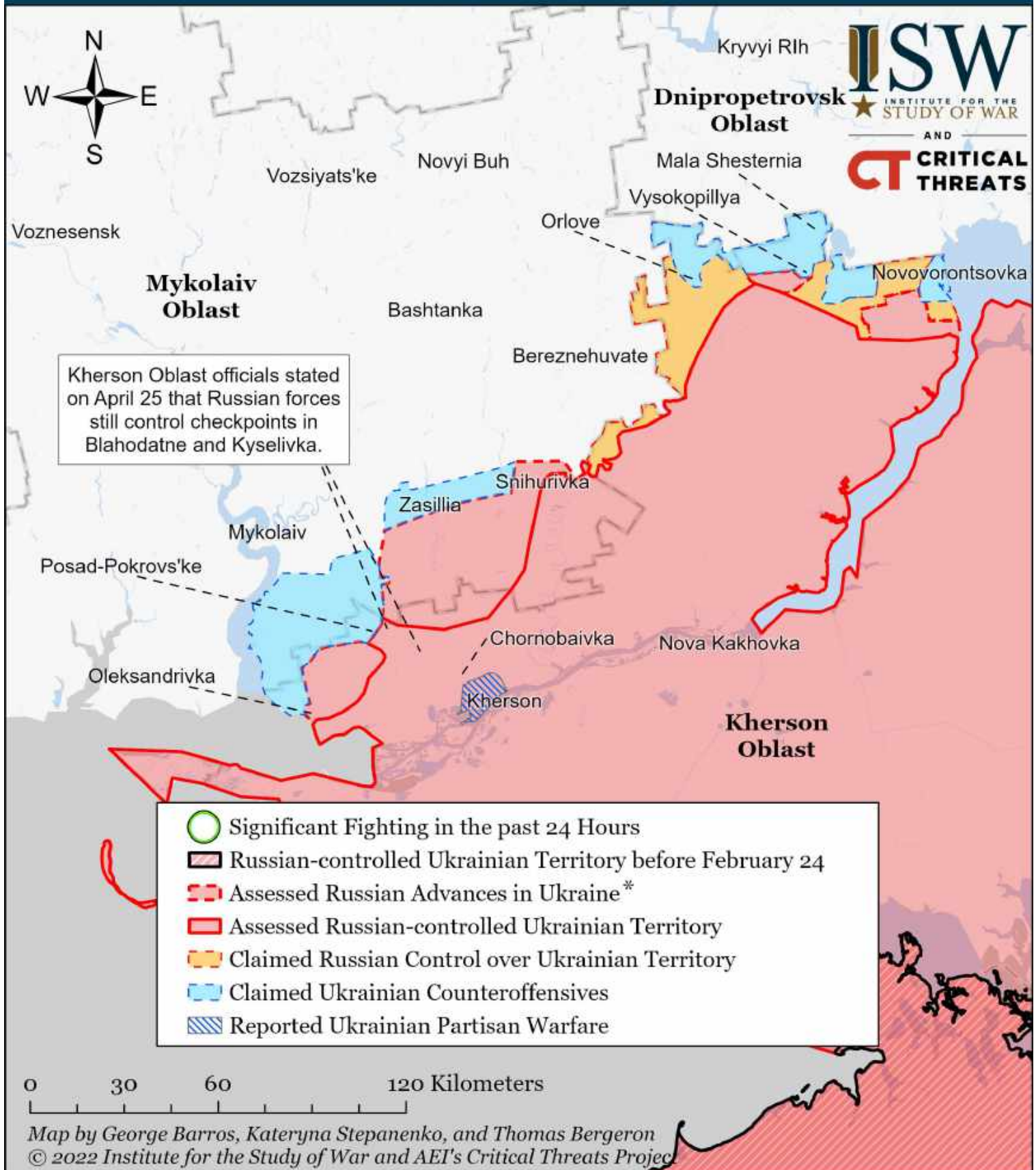
Assessed Control of Terrain Around Kherson and Mykolaiv as of May 14, 2022, 3:00 PM ET



* Assessed Russian advances are areas where ISW assesses Russian forces have operated in or launched attacks against but do not control.

Note: ISW scaled back the Ukrainian counteroffensive around Oleksandrivka, Kherson Oblast, based on a geolocated video of a Ukrainian drone attack on a Russian tank on May 11.

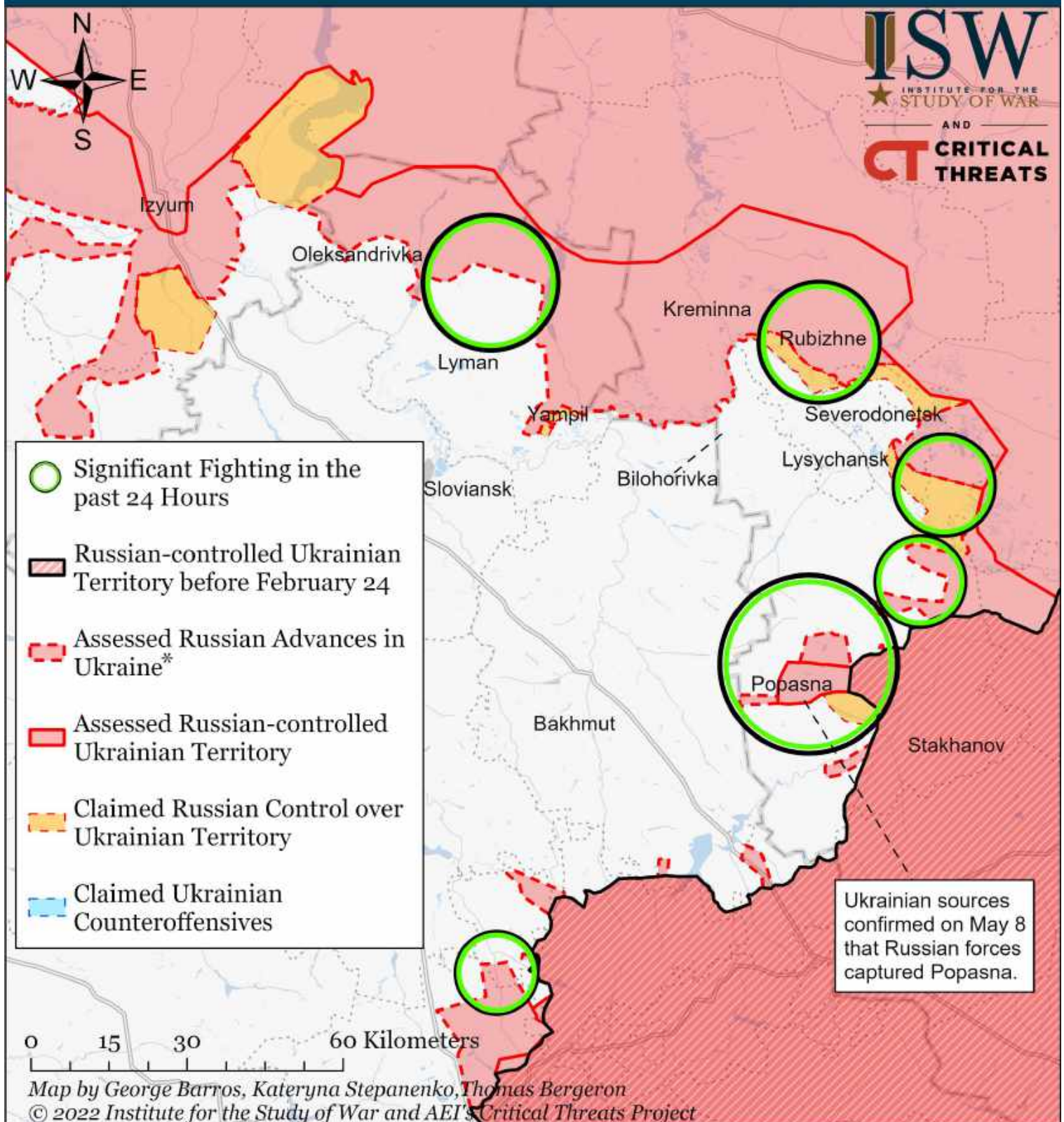
Assessed Control of Terrain Around Kherson and Mykolaiv as of May 13, 2022, 3:00 PM ET



* Assessed Russian advances are areas where ISW assesses Russian forces have operated in or launched attacks against but do not control.

Note: ISW scaled back the Ukrainian counteroffensive around Oleksandrivka, Kherson Oblast, based on a geolocated video of a Ukrainian drone attack on a Russian tank on May 11.

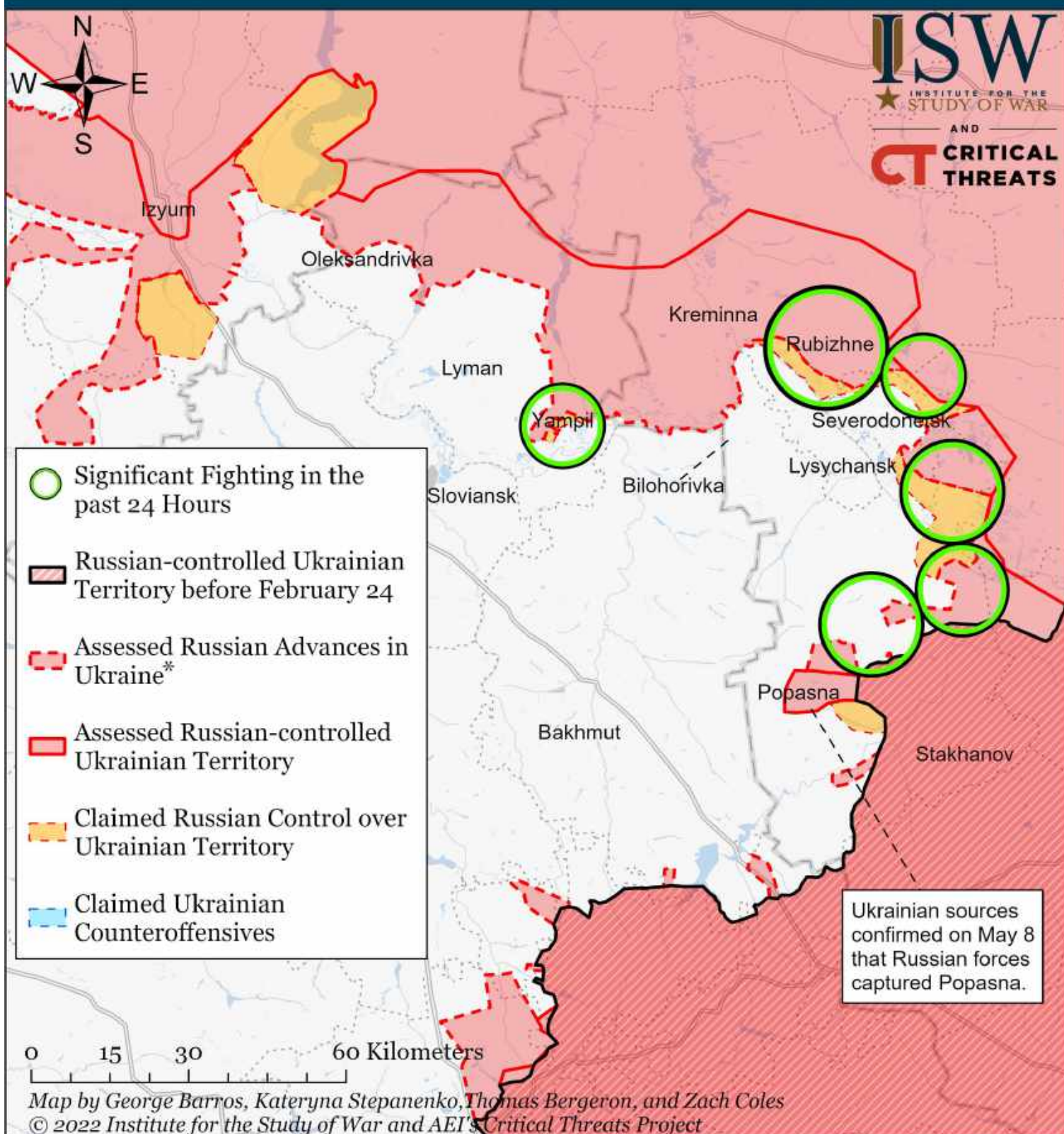
Assessed Control of Terrain Around Luhansk as of May 16, 2022, 3:00 PM ET



* Assessed Russian advances are areas where ISW assesses Russian forces have operated in or launched attacks against but do not control.

Note: We have expanded Russian assessed advances to Rubizhne and Voevodivka based on Ukrainian local administration reports that Russian forces seized the settlements on May 12.

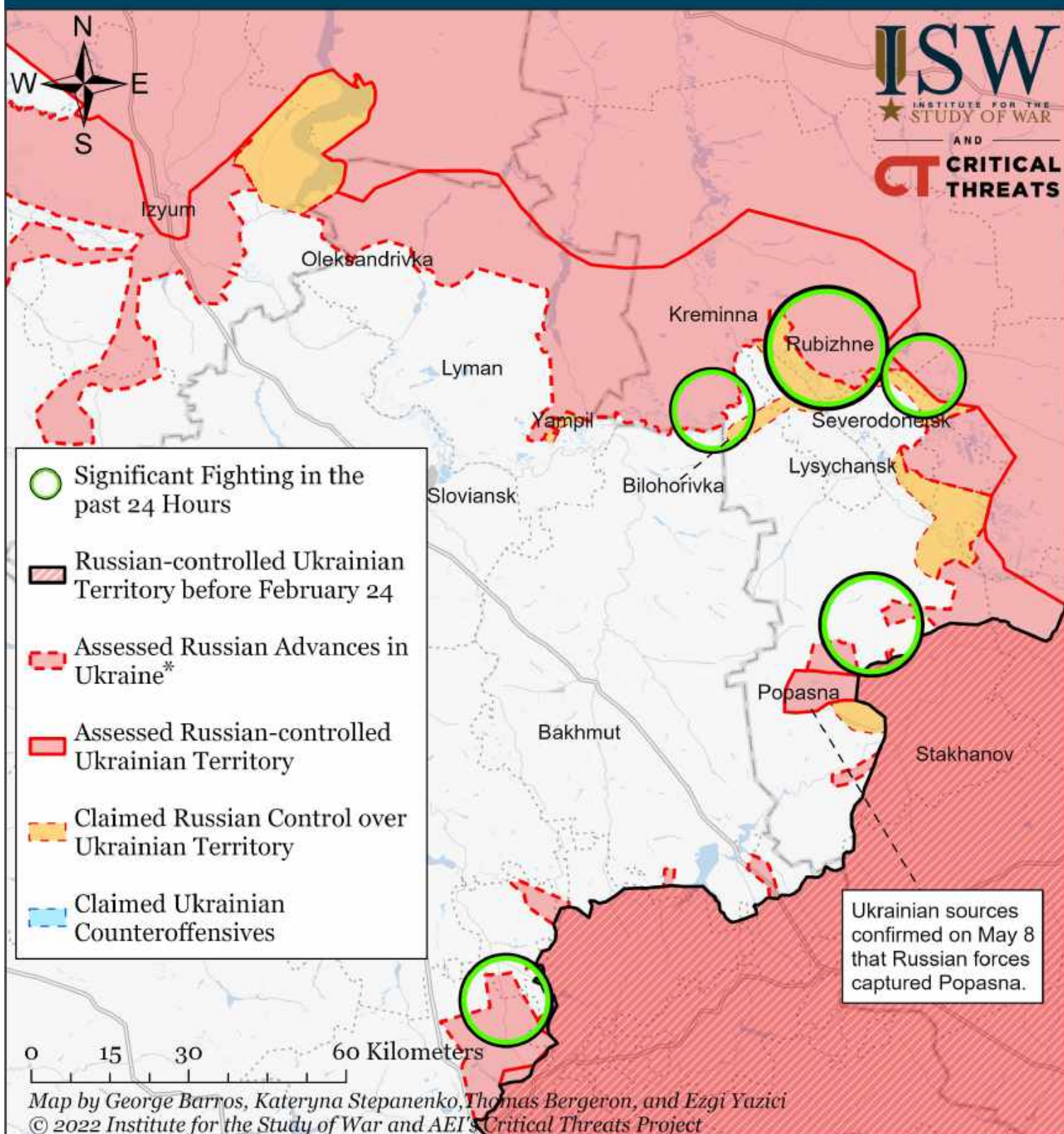
Assessed Control of Terrain Around Luhansk as of May 15, 2022, 3:00 PM ET



* Assessed Russian advances are areas where ISW assesses Russian forces have operated in or launched attacks against but do not control.

Note: We have expanded Russian assessed advances to Rubizhne and Voevodivka based on Ukrainian local administration reports that Russian forces seized the settlements on May 12.

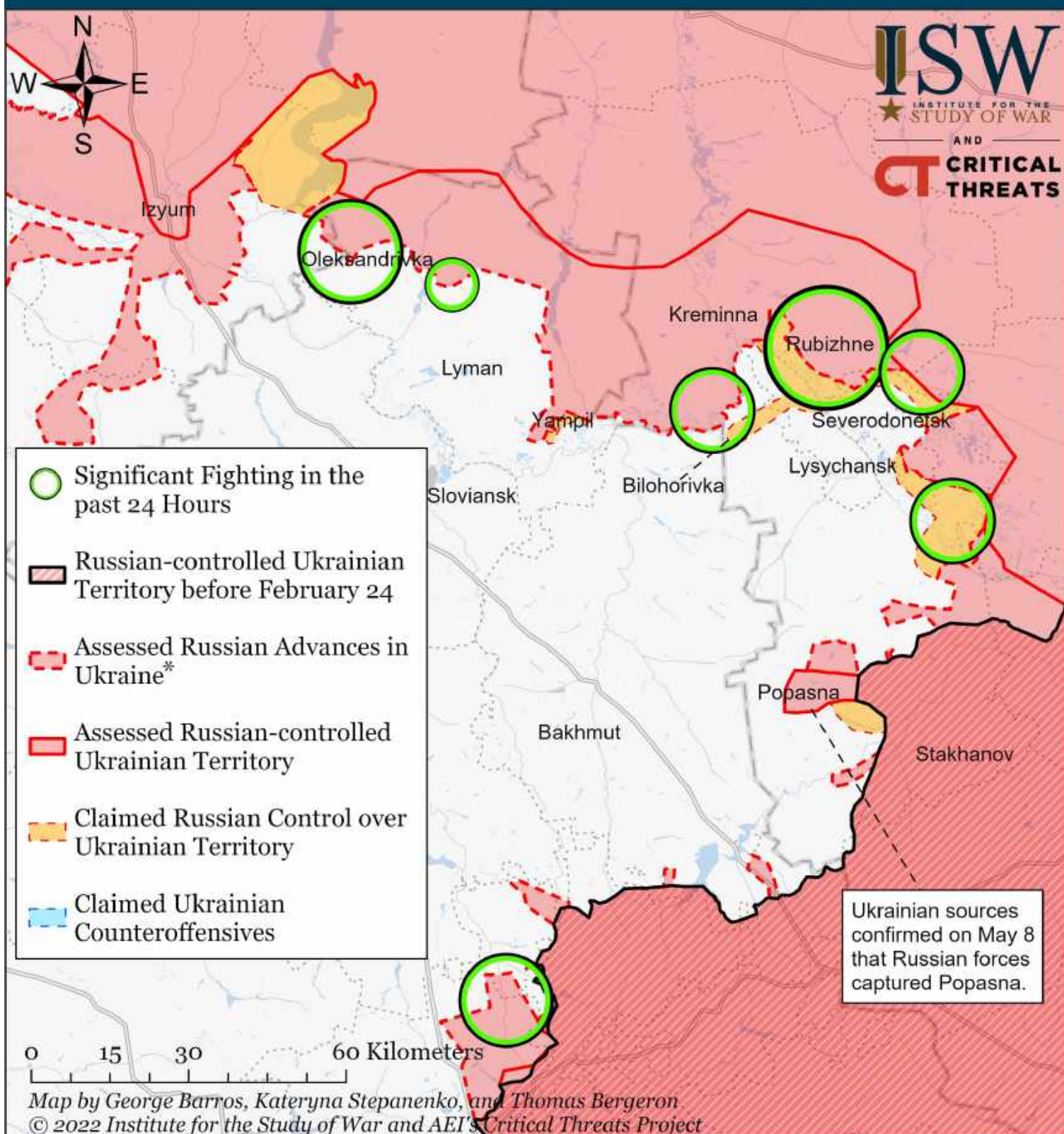
Assessed Control of Terrain Around Luhansk as of May 14, 2022, 3:00 PM ET



* Assessed Russian advances are areas where ISW assesses Russian forces have operated in or launched attacks against but do not control.

Note: We have expanded Russian assessed advances to Rubizhne and Voevodivka based on Ukrainian local administration reports that Russian forces seized the settlements on May 12.

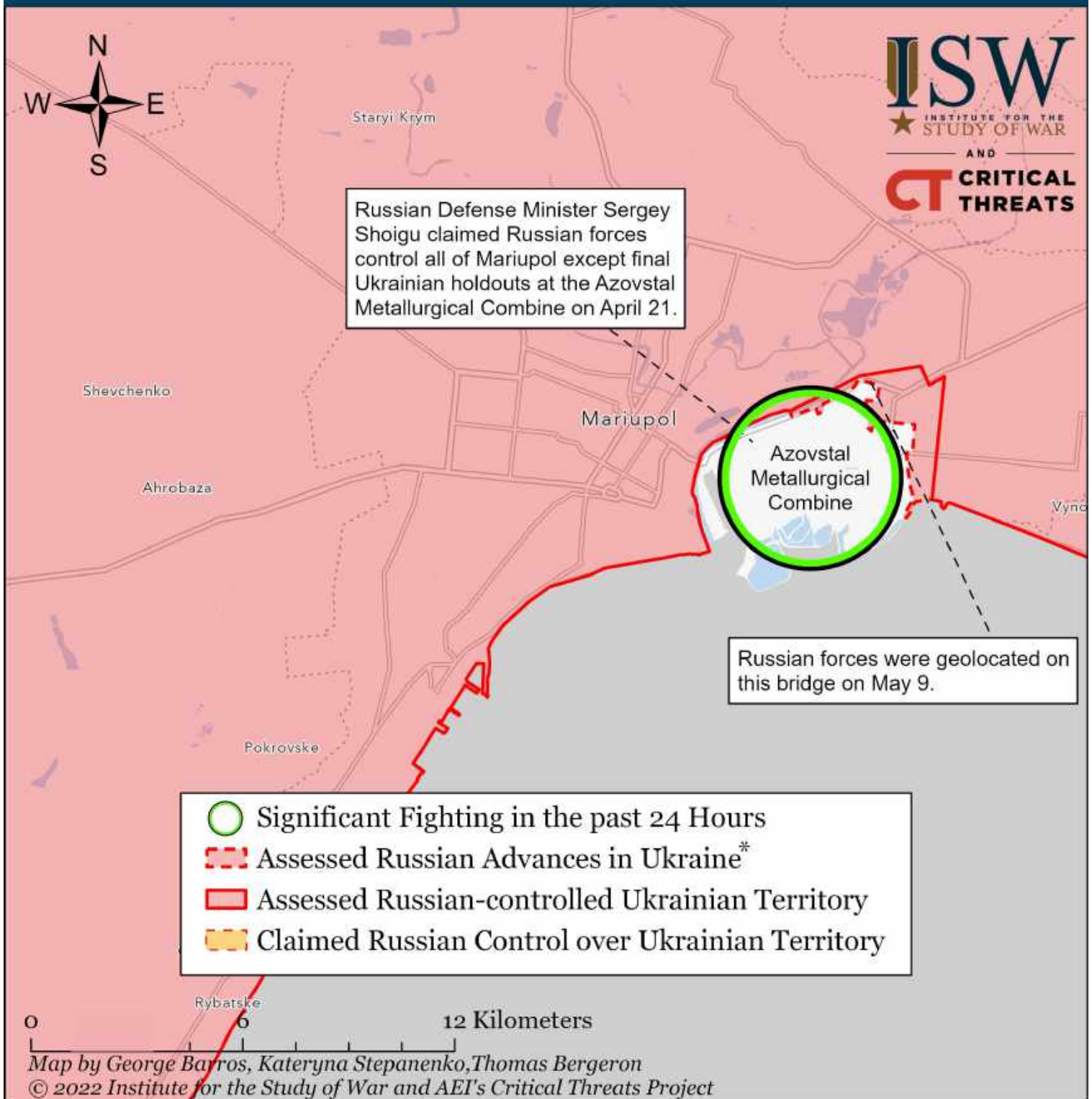
Assessed Control of Terrain Around Luhansk as of May 13, 2022, 3:00 PM ET



* Assessed Russian advances are areas where ISW assesses Russian forces have operated in or launched attacks against but do not control.

Note: We have expanded Russian assessed advances to Rubizhne and Voevodivka based on Ukrainian local administration reports that Russian forces seized the settlements on May 12.

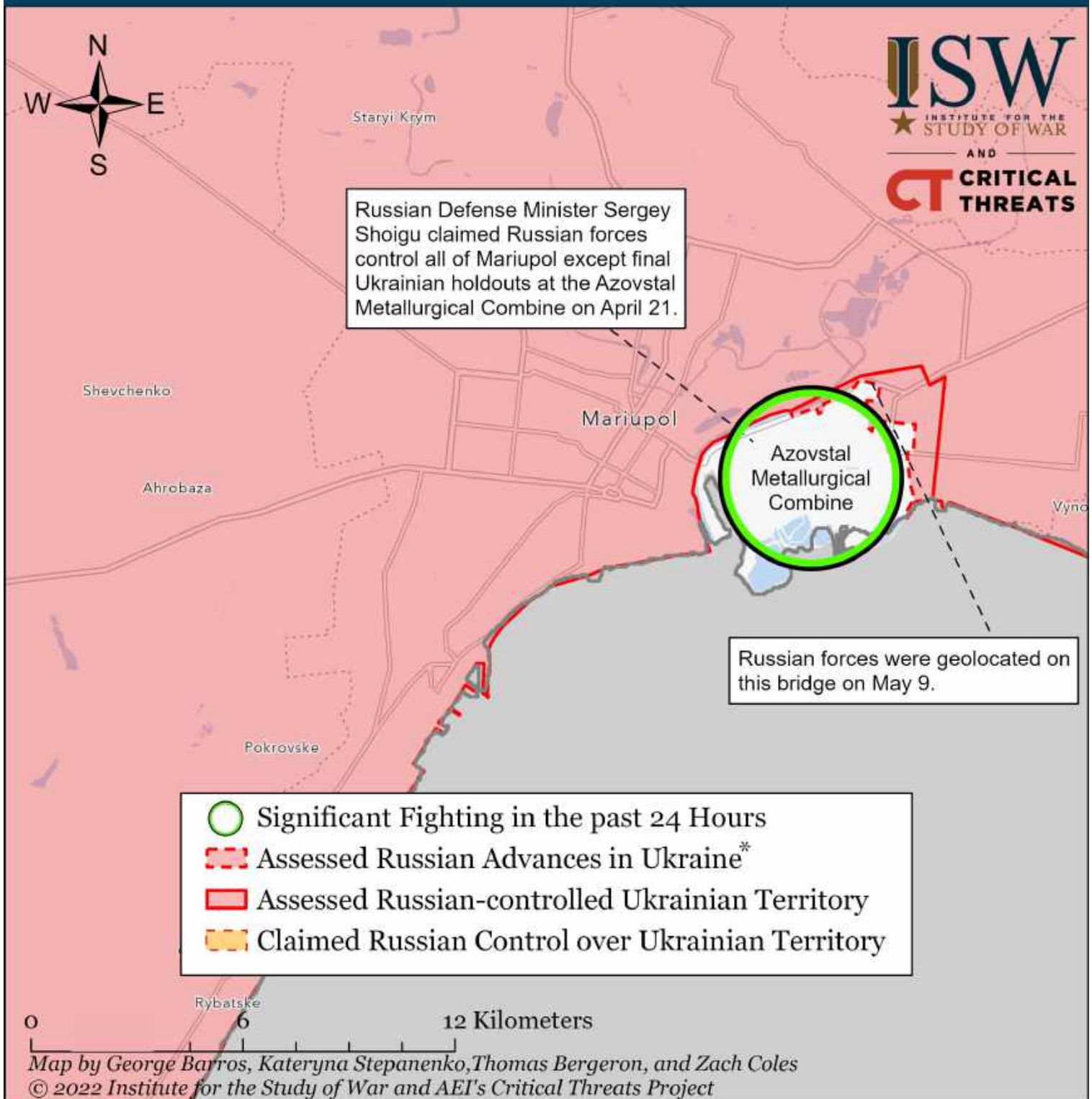
Assessed Control of Terrain Around Mariupol as of May 16, 2022, 3:00 PM ET



The Kremlin declared victory in Mariupol on April 21 after capturing the city besides Ukrainian holdouts in the encircled Azovstal Metallurgical Combine. Russian and Ukrainian officials negotiated the first evacuation of wounded Ukrainian servicemen from Azovstal on May 16. The Battle of Mariupol may be coming to an end in the coming days.

* Assessed Russian advances are areas where ISW assesses Russian forces have operated in or launched attacks against but do not control.

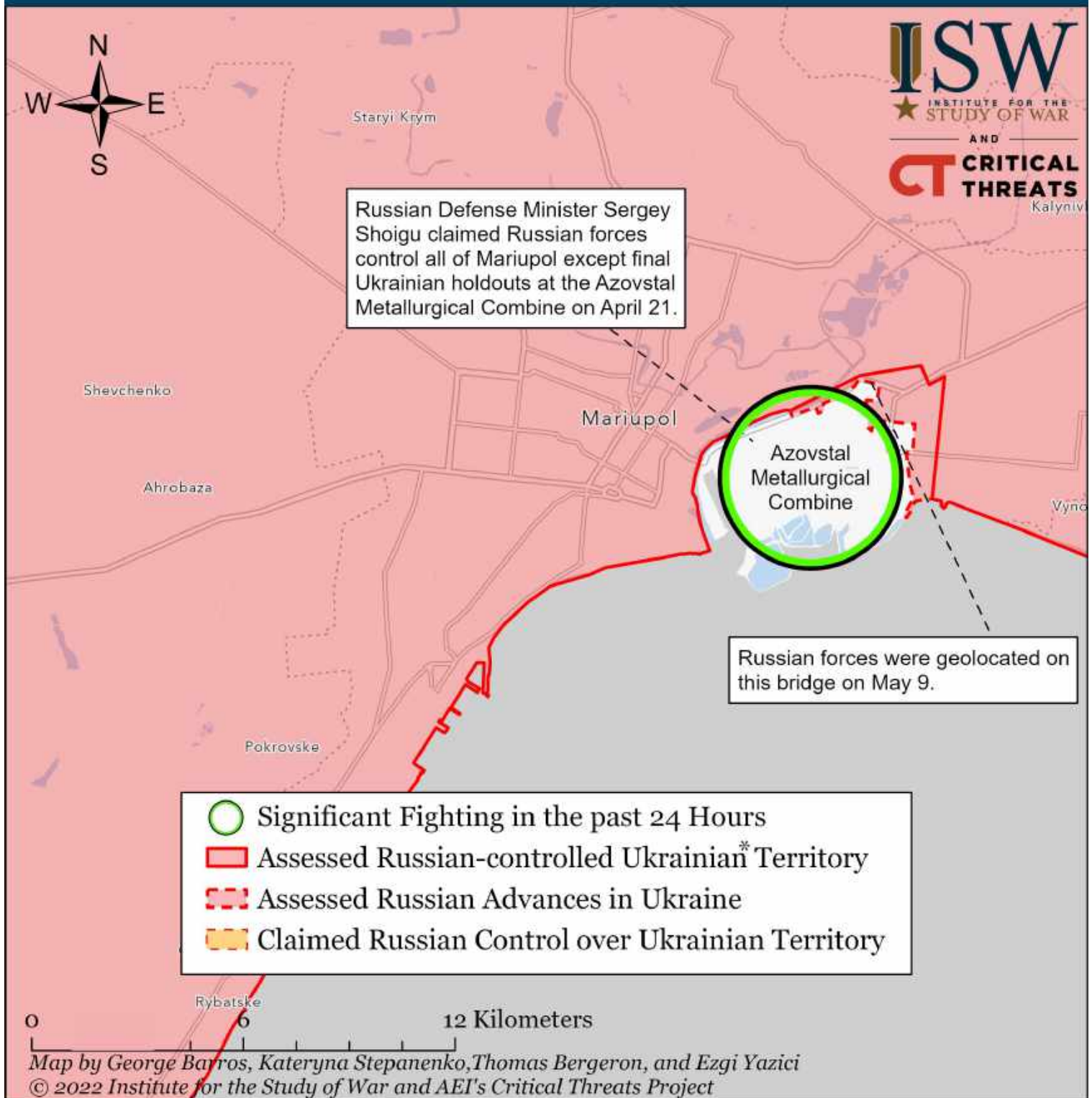
Assessed Control of Terrain Around Mariupol as of May 15, 2022, 3:00 PM ET



The Kremlin declared victory in Mariupol on April 21 after capturing the city besides Ukrainian holdouts in the encircled Azovstal Metallurgical Combine. Russian forces reportedly conducted an assault on the remaining Ukrainian defenders at Azovstal on May 4. ISW recoded Russian claimed control over the northwestern outskirts of Azovstal to Russian assessed advance based on geolocated videos of Russian forces operating in the area on May 9.

* Assessed Russian advances are areas where ISW assesses Russian forces have operated in or launched attacks against but do not control.

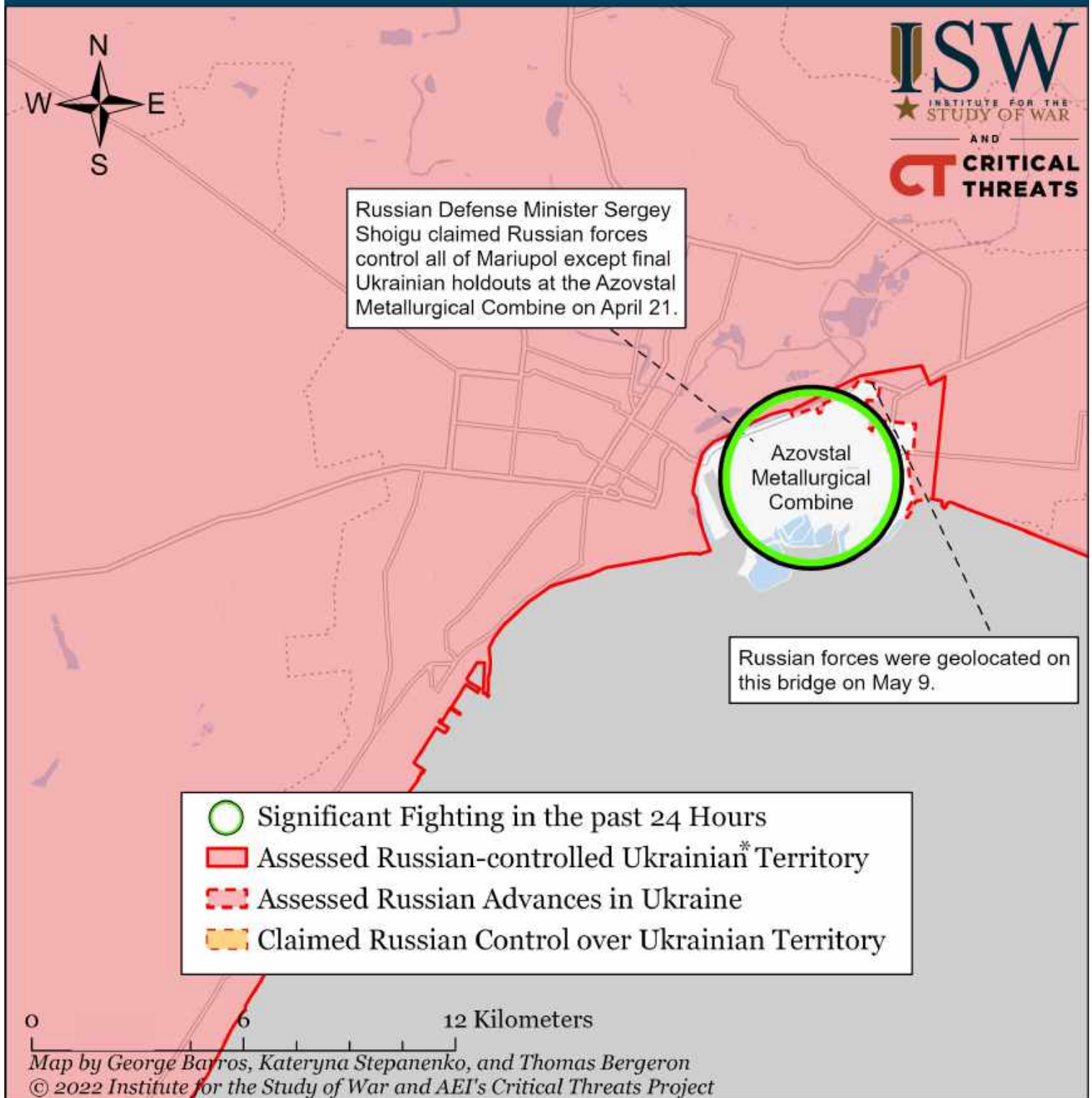
Assessed Control of Terrain Around Mariupol as of May 14, 2022, 3:00 PM ET



The Kremlin declared victory in Mariupol on April 21 after capturing the city besides Ukrainian holdouts in the encircled Azovstal Metallurgical Combine. Russian forces reportedly conducted an assault on the remaining Ukrainian defenders at Azovstal on May 4. ISW recoded Russian claimed control over the northwestern outskirts of Azovstal to Russian assessed advance based on geolocated videos of Russian forces operating in the area on May 9.

* Assessed Russian advances are areas where ISW assesses Russian forces have operated in or launched attacks against but do not control.

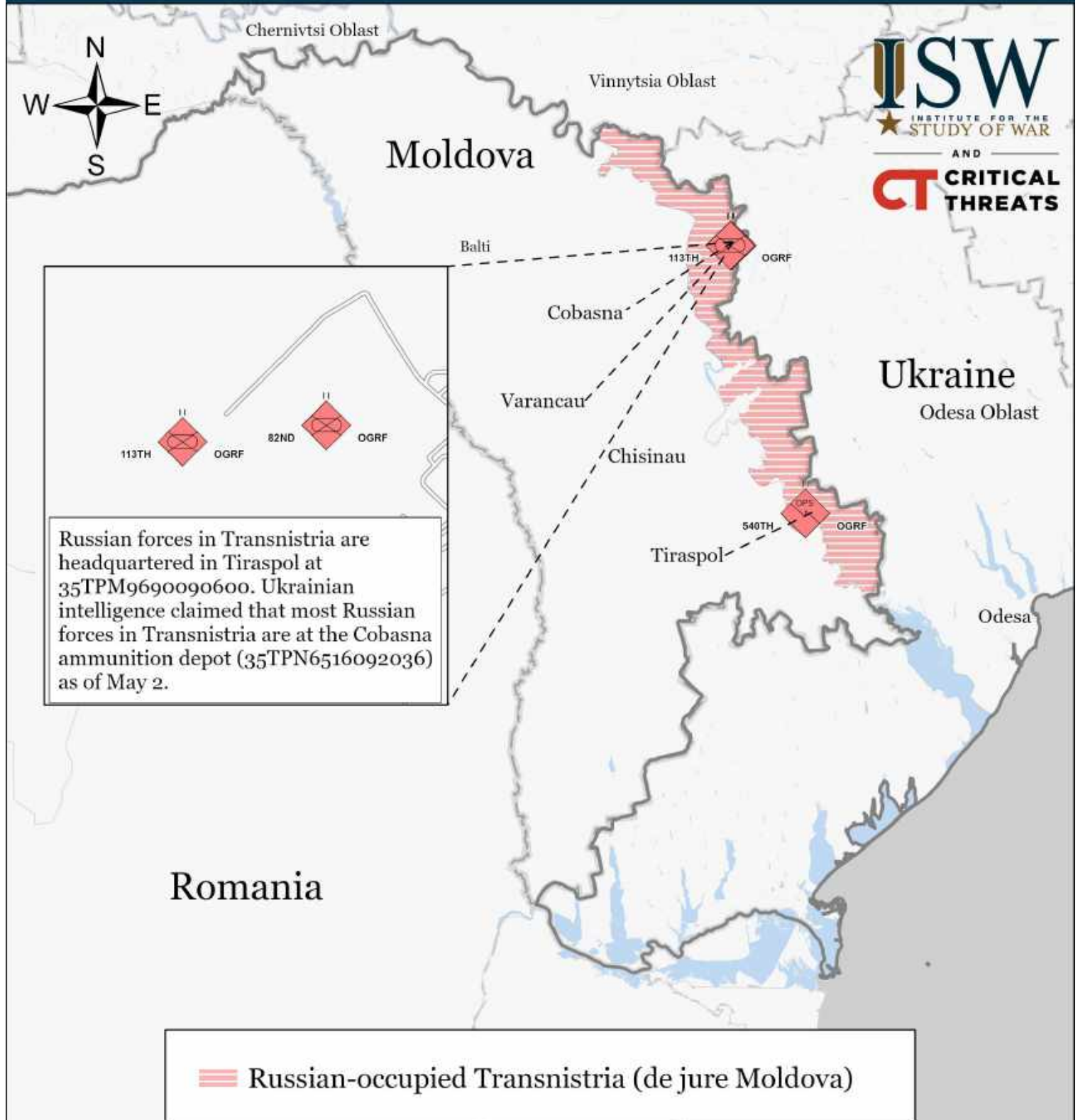
Assessed Control of Terrain Around Mariupol as of May 13, 2022, 3:00 PM ET



The Kremlin declared victory in Mariupol on April 21 after capturing the city besides Ukrainian holdouts in the encircled Azovstal Metallurgical Combine. Russian forces reportedly conducted an assault on the remaining Ukrainian defenders at Azovstal on May 4. ISW recoded Russian claimed control over the northwestern outskirts of Azovstal to Russian assessed advance based on geolocated videos of Russian forces operating in the area on May 9.

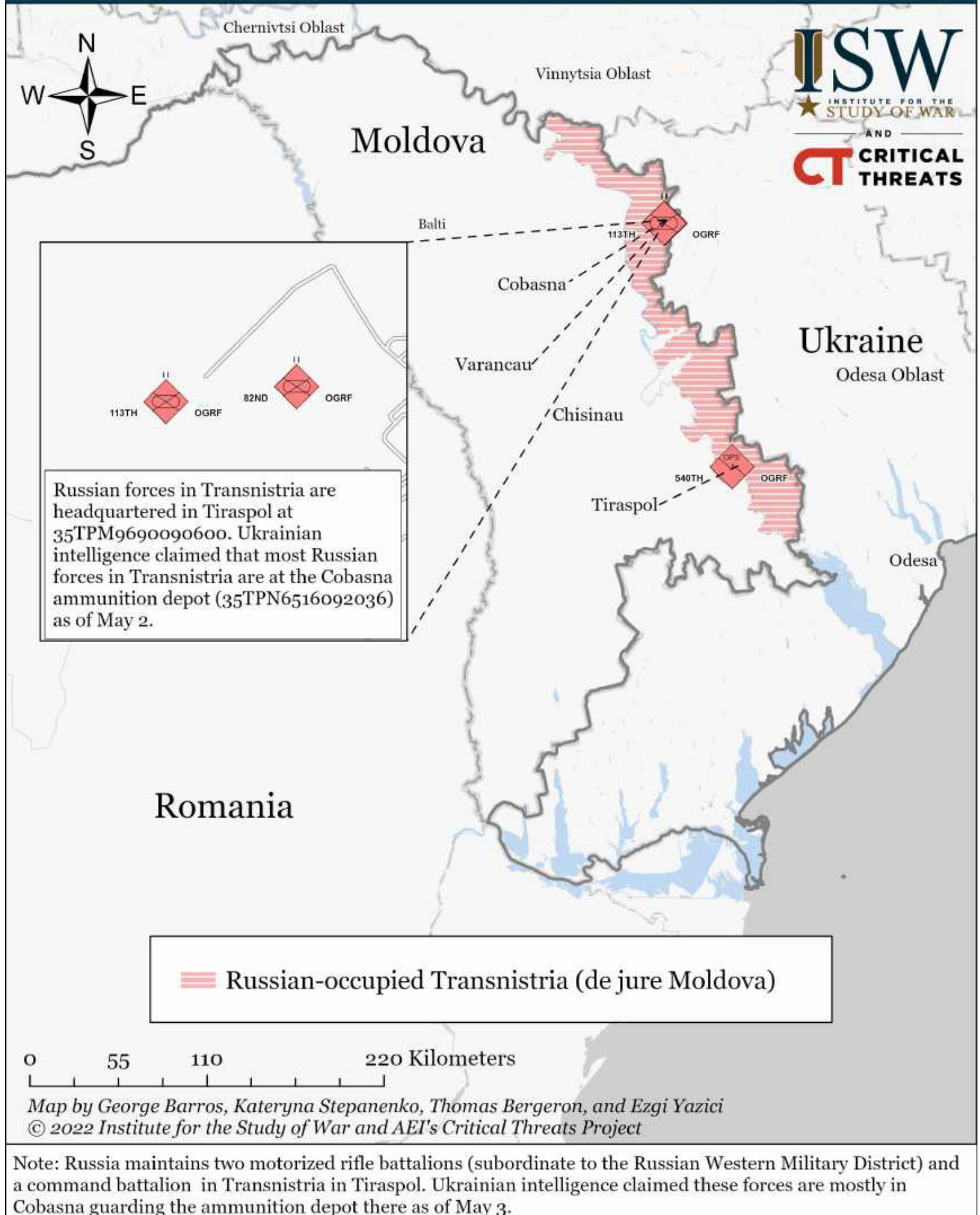
* Assessed Russian advances are areas where ISW assesses Russian forces have operated in or launched attacks against but do not control.

Moldova Situational Map as of May 15, 2022, 3:00 PM ET

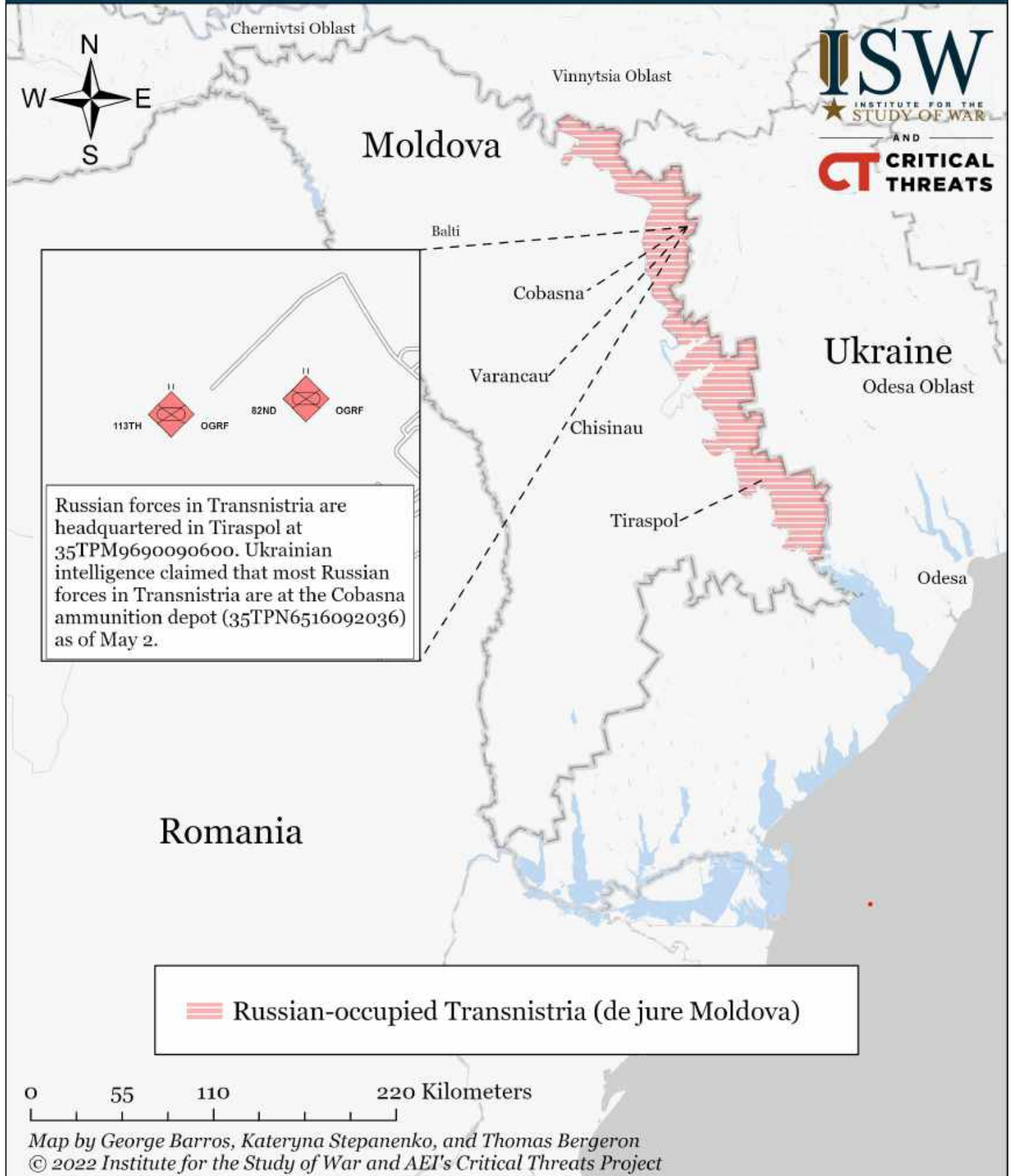


Note: Russia maintains two motorized rifle battalions (subordinate to the Russian Western Military District) and a command battalion in Transnistria in Tiraspol. Ukrainian intelligence claimed these forces are mostly in Cobasna guarding the ammunition depot there as of May 3.

Moldova Situational Map as of May 14, 2022, 3:00 PM ET



Moldova Situational Map as of May 13, 2022, 3:00 PM ET



Note: Russia maintains two motorized rifle battalions (subordinate to the Russian Western Military District) and a command battalion in Transnistria in Tiraspol. Ukrainian intelligence claimed these forces are mostly in Cobasna guarding the ammunition depot there as of May 3.