

Assessed Control of Terrain in Ukraine and Main Russian Maneuver Axes as of May 20, 2022, 3:00 PM ET



Map by George Barros, Kateryna Stepanenko, Thomas Bergeron, and Zach Coles
© 2022 Institute for the Study of War and AEI's Critical Threats Project

* Assessed Russian advances are areas where ISW assesses Russian forces have operated in or launched attacks against but do not control.

Assessed Control of Terrain in Ukraine and Main Russian Maneuver Axes as of May 19, 2022, 3:00 PM ET



Map by George Barros, Kateryna Stepanenko, Thomas Bergeron, Ezgi Yazici
© 2022 Institute for the Study of War and AEI's Critical Threats Project

* Assessed Russian advances are areas where ISW assesses Russian forces have operated in or launched attacks against but do not control.

Assessed Control of Terrain in Ukraine and Main Russian Maneuver Axes as of May 18, 2022, 3:00 PM ET



Map by George Barros, Kateryna Stepanenko, Thomas Bergeron
© 2022 Institute for the Study of War and AEI's Critical Threats Project

* Assessed Russian advances are areas where ISW assesses Russian forces have operated in or launched attacks against but do not control.

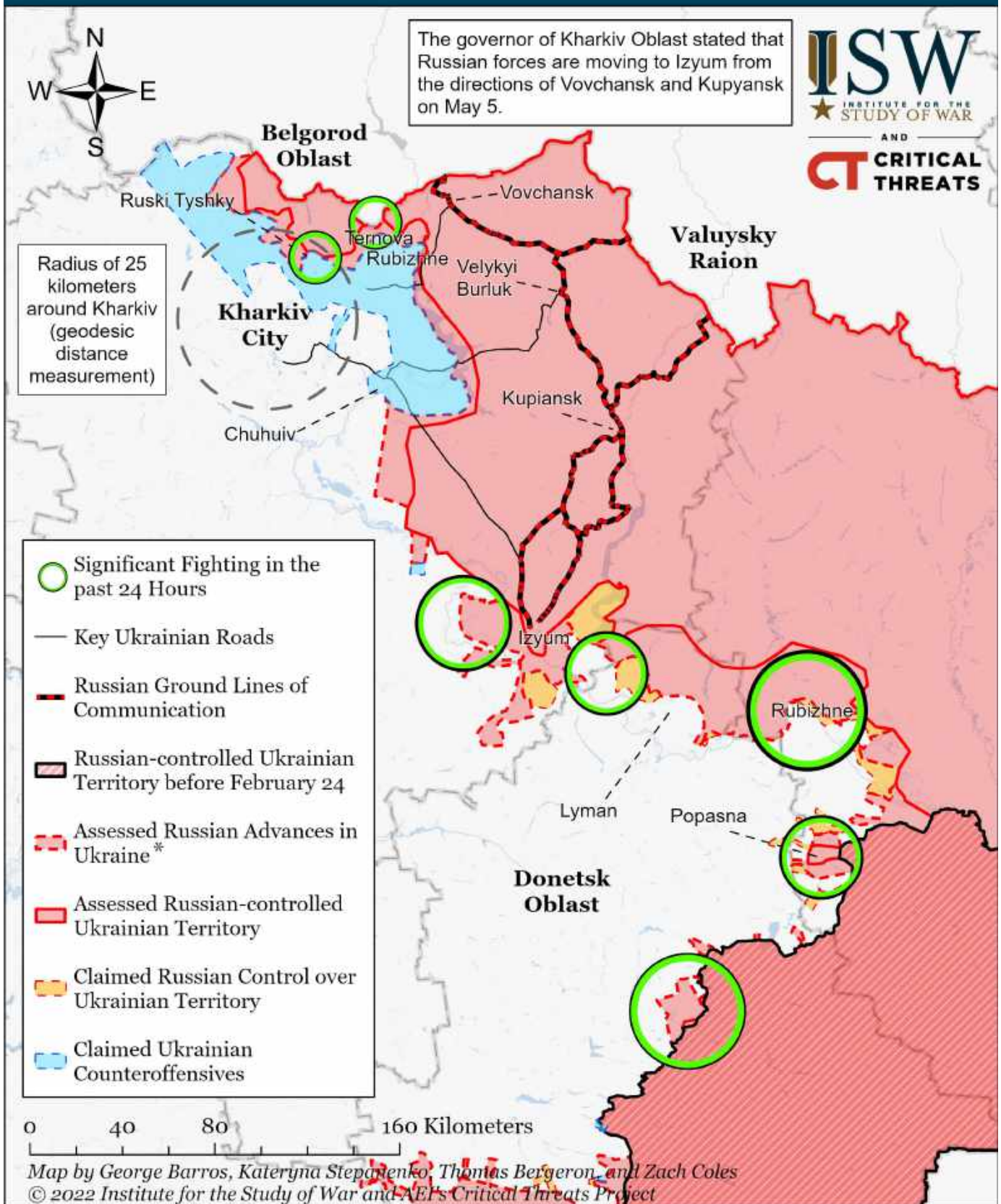
Assessed Control of Terrain in Ukraine and Main Russian Maneuver Axes as of May 17, 2022, 3:00 PM ET



Map by George Barros, Kateryna Stepanenko, Thomas Bergeron
© 2022 Institute for the Study of War and AEI's Critical Threats Project

* Assessed Russian advances are areas where ISW assesses Russian forces have operated in or launched attacks against but do not control.

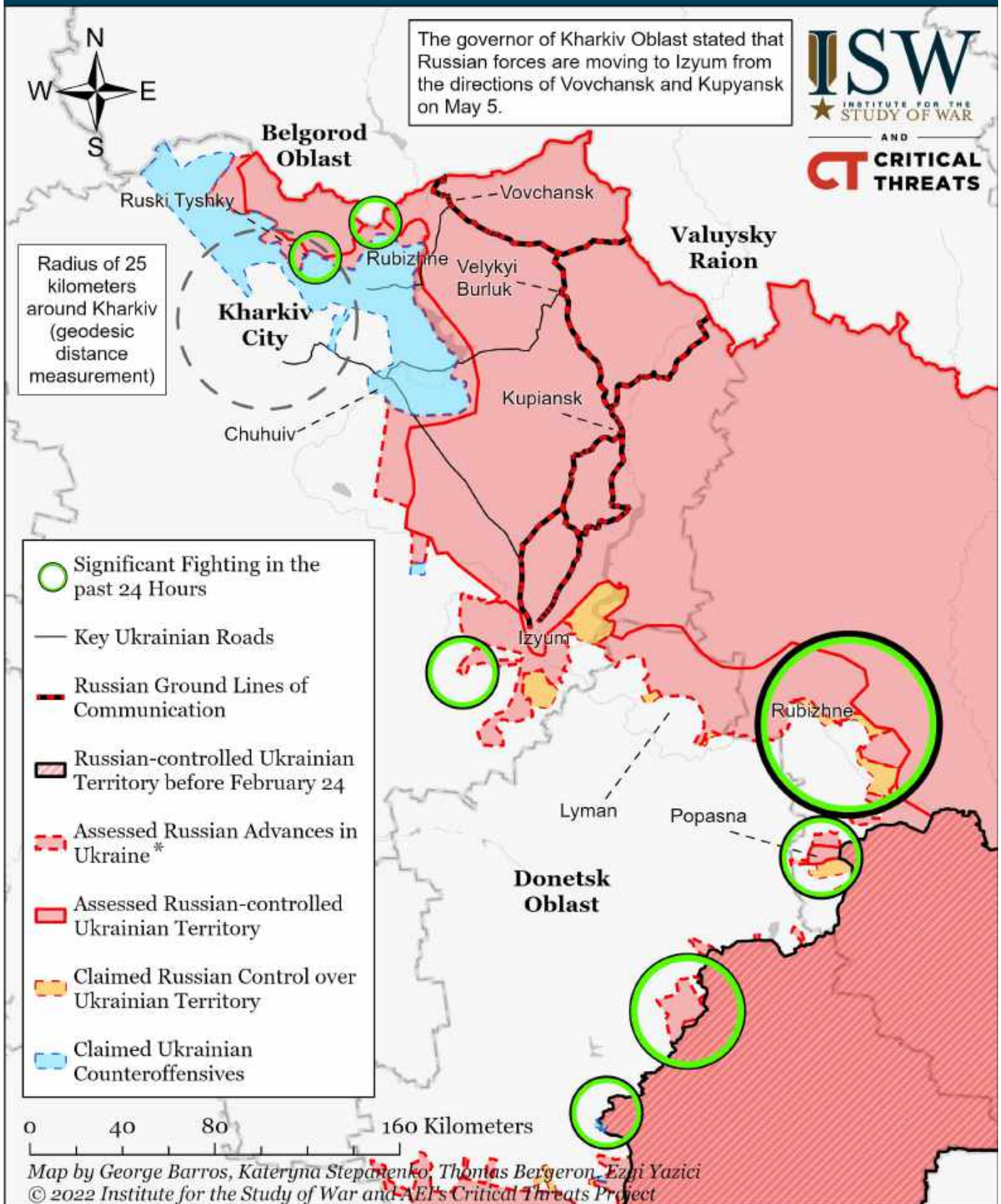
Assessed Control of Terrain Around Kharkiv as of May 20, 2022, 3:00 PM ET



* Assessed Russian advances are areas where ISW assesses Russian forces have operated in or launched attacks against but do not control.

We have not observed open-source evidence to confirm reports that Russian forces captured Ternova and Rubizhne in Kharkiv Oblast on May 20. Pro-Russian Telegram channels claimed that Russian forces attacked Tsyrukun and Zolochiv and launched a counteroffensive in Ternova on May 20. Official Ukrainian government sources stated on May 20 that fighting continued in the area of Ternova and Vesele and that Russian forces shelled Rus'ki Tyshky, but did not specify any territorial control changes. We will update our maps when we collect sufficient evidence to do so.

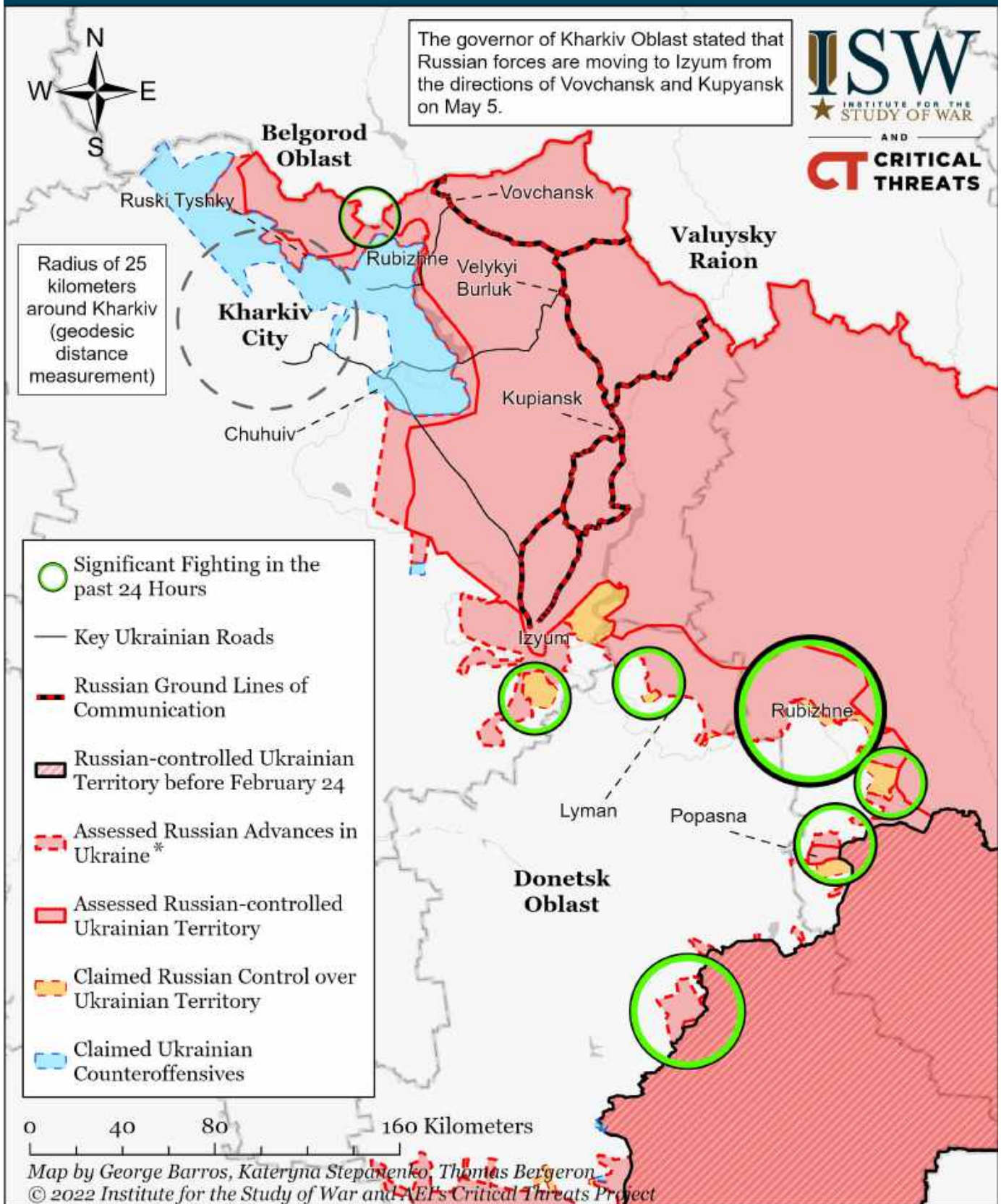
Assessed Control of Terrain Around Kharkiv as of May 19, 2022, 3:00 PM ET



* Assessed Russian advances are areas where ISW assesses Russian forces have operated in or launched attacks against but do not control.

Ukrainian military officials reported that Ukrainian forces liberated 23 unnamed villages in northern Kharkiv Oblast since May 5. Ukrainian forces claimed they reached an unspecified location on the international border in Kharkiv Oblast on May 15. ISW will change our maps once open sources name these settlements. We extended Ukrainian counteroffensives to outskirts of Borschova in northern Kharkiv Oblast given that the Ukrainian General Staff reported that fighting is ongoing in the settlement as of May 19.

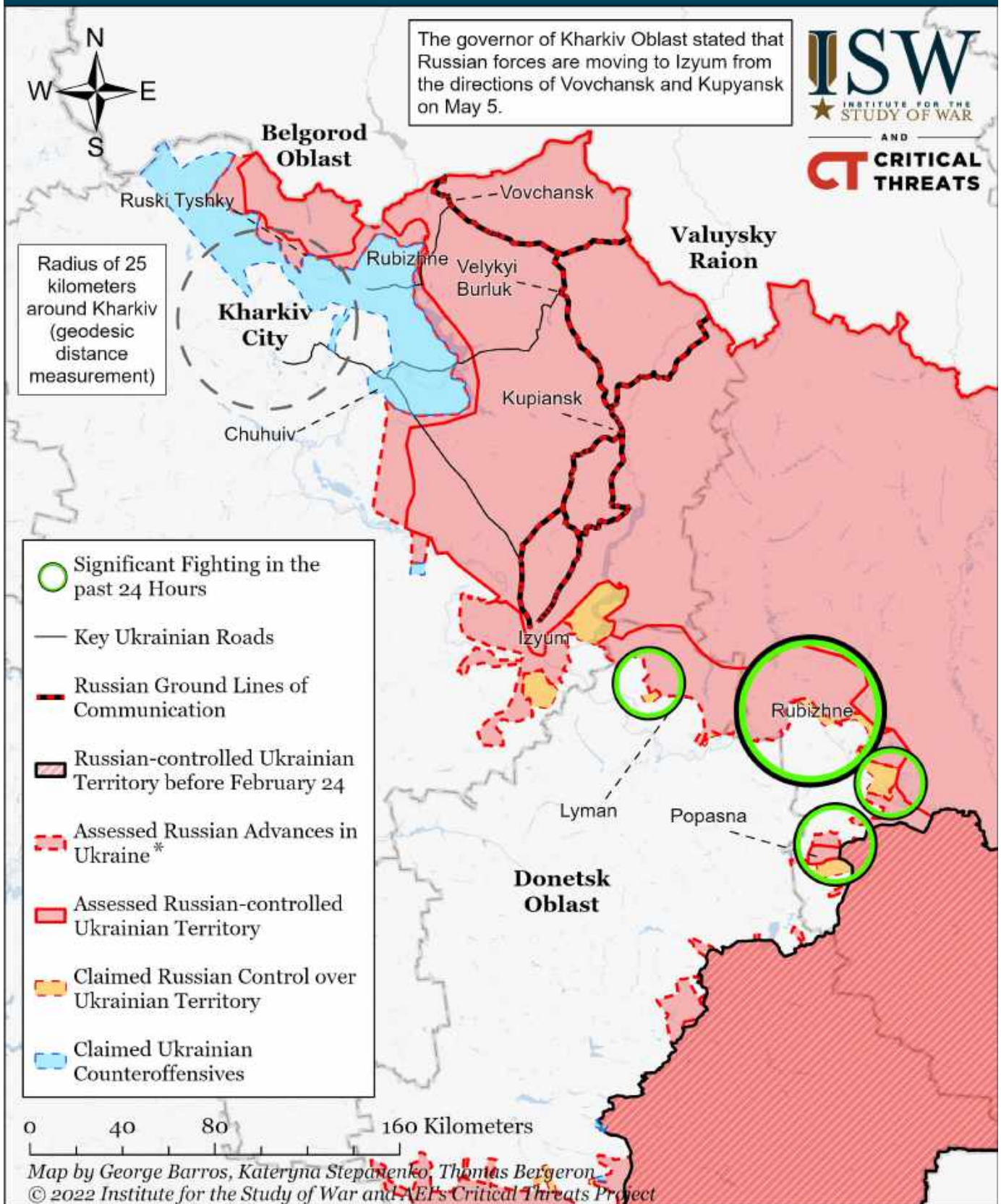
Assessed Control of Terrain Around Kharkiv as of May 18, 2022, 3:00 PM ET



* Assessed Russian advances are areas where ISW assesses Russian forces have operated in or launched attacks against but do not control.

We extended Ukrainian counteroffensives to Dementievka in Kharkiv Oblast given that the Ukrainian General Staff reported that Ukrainian forces liberated the settlement on May 18. Ukrainian sources reported that Ukrainian forces liberated an unnamed village near the Russian border on May 14. Ukrainian forces claimed they reached an unspecified location on the international border in Kharkiv Oblast on May 15. ISW will change our maps once open sources name these settlements.

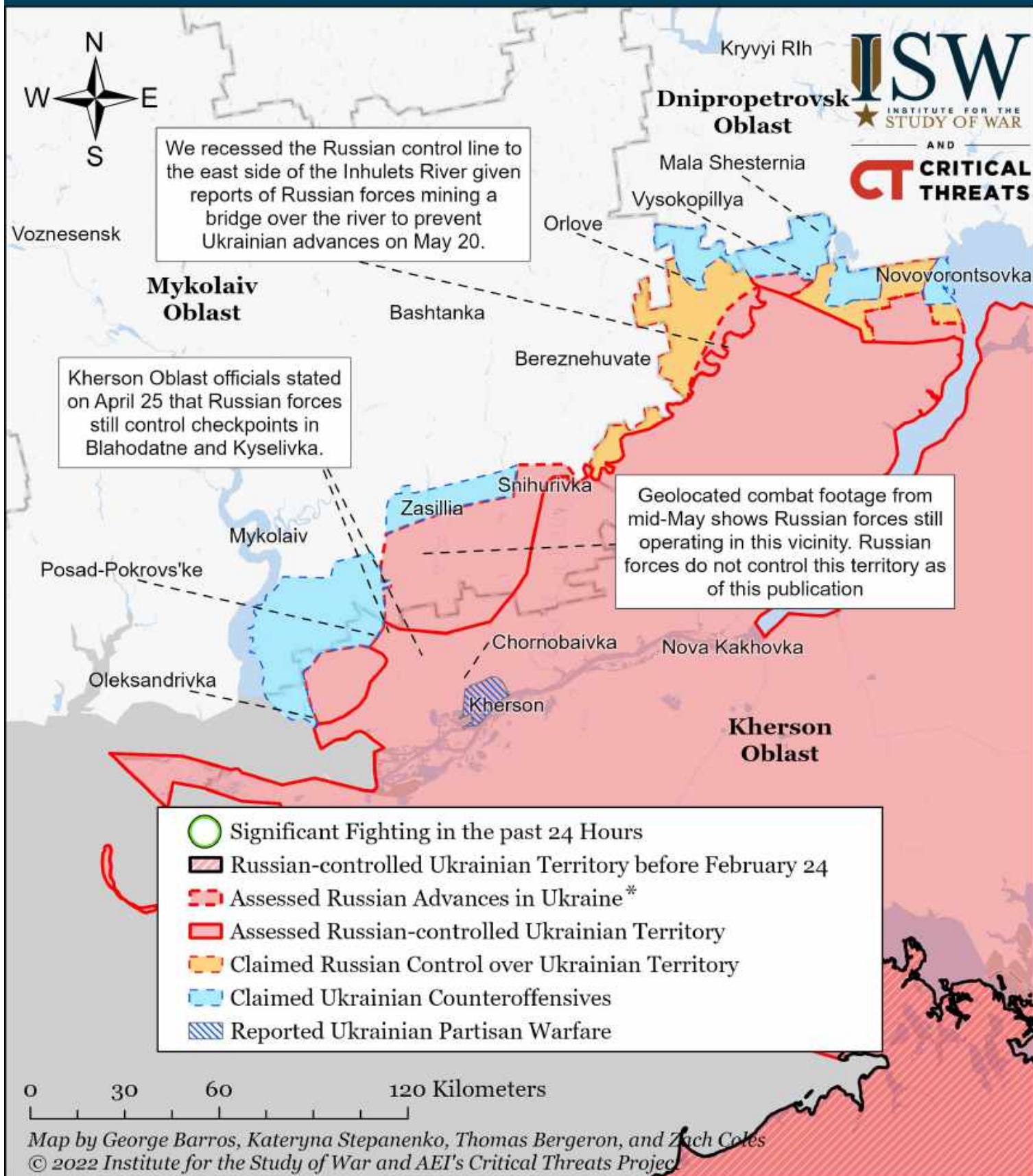
Assessed Control of Terrain Around Kharkiv as of May 17, 2022, 3:00 PM ET



* Assessed Russian advances are areas where ISW assesses Russian forces have operated in or launched attacks against but do not control.

We extended Ukrainian counteroffensives to Petrivka and Ternova in Kharkiv Oblast given that the Ukrainian General Staff reported that Russian forces shelled these towns on May 13, confirming reports that Ukrainian forces retook them. Ukrainian sources reported that Ukrainian forces liberated an unnamed village near the Russian border on May 14. Ukrainian forces claimed they reached an unspecified location on the international border in Kharkiv Oblast on May 15. ISW will change our maps once open sources name these settlements.

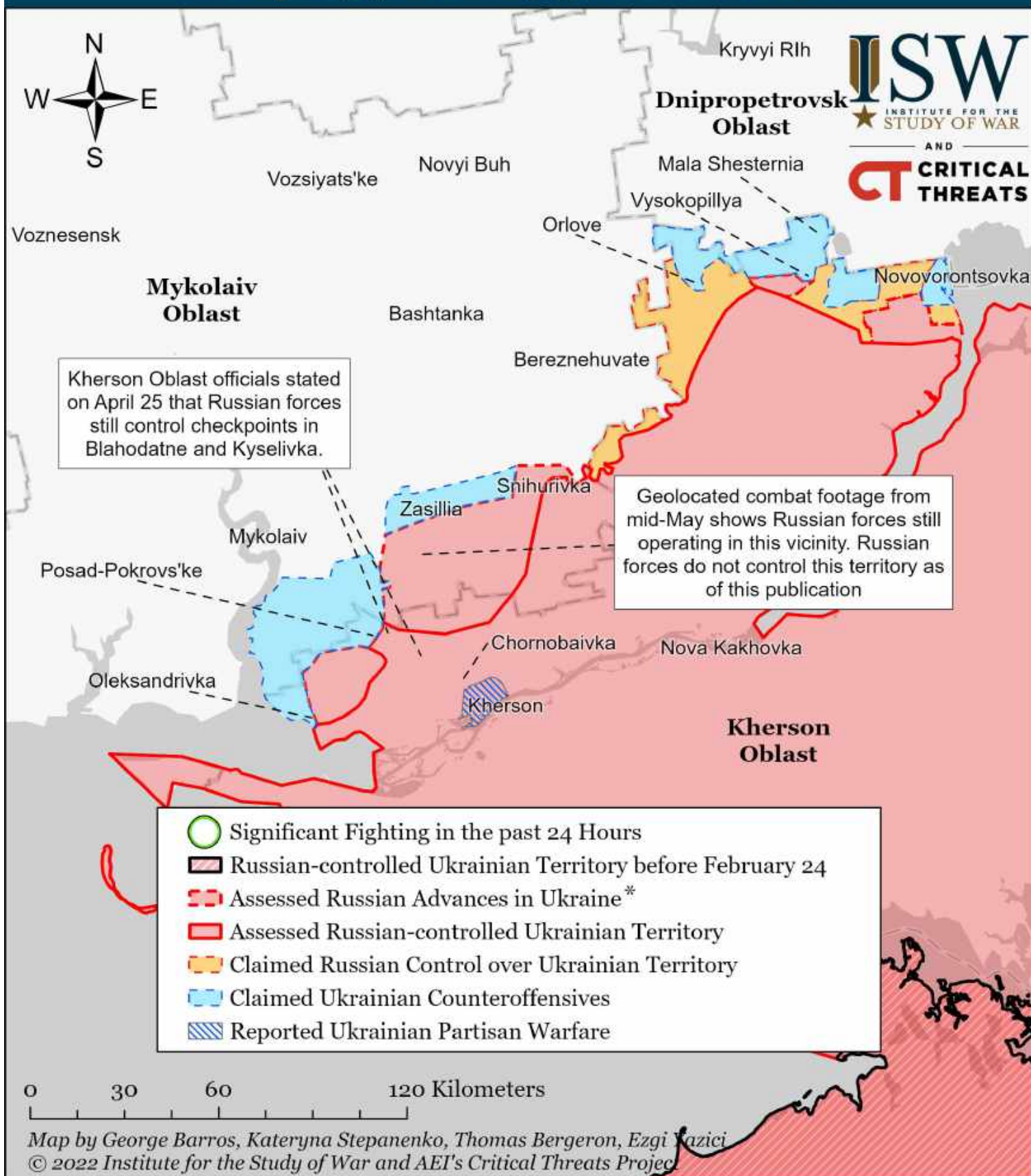
Assessed Control of Terrain Around Kherson and Mykolaiv as of May 20, 2022, 3:00 PM ET



* Assessed Russian advances are areas where ISW assesses Russian forces have operated in or launched attacks against but do not control.

Note: ISW extended Ukrainian counteroffensives around Oleksandrivka, Kherson Oblast, based on reports of Russian artillery fire in the area on May 16.

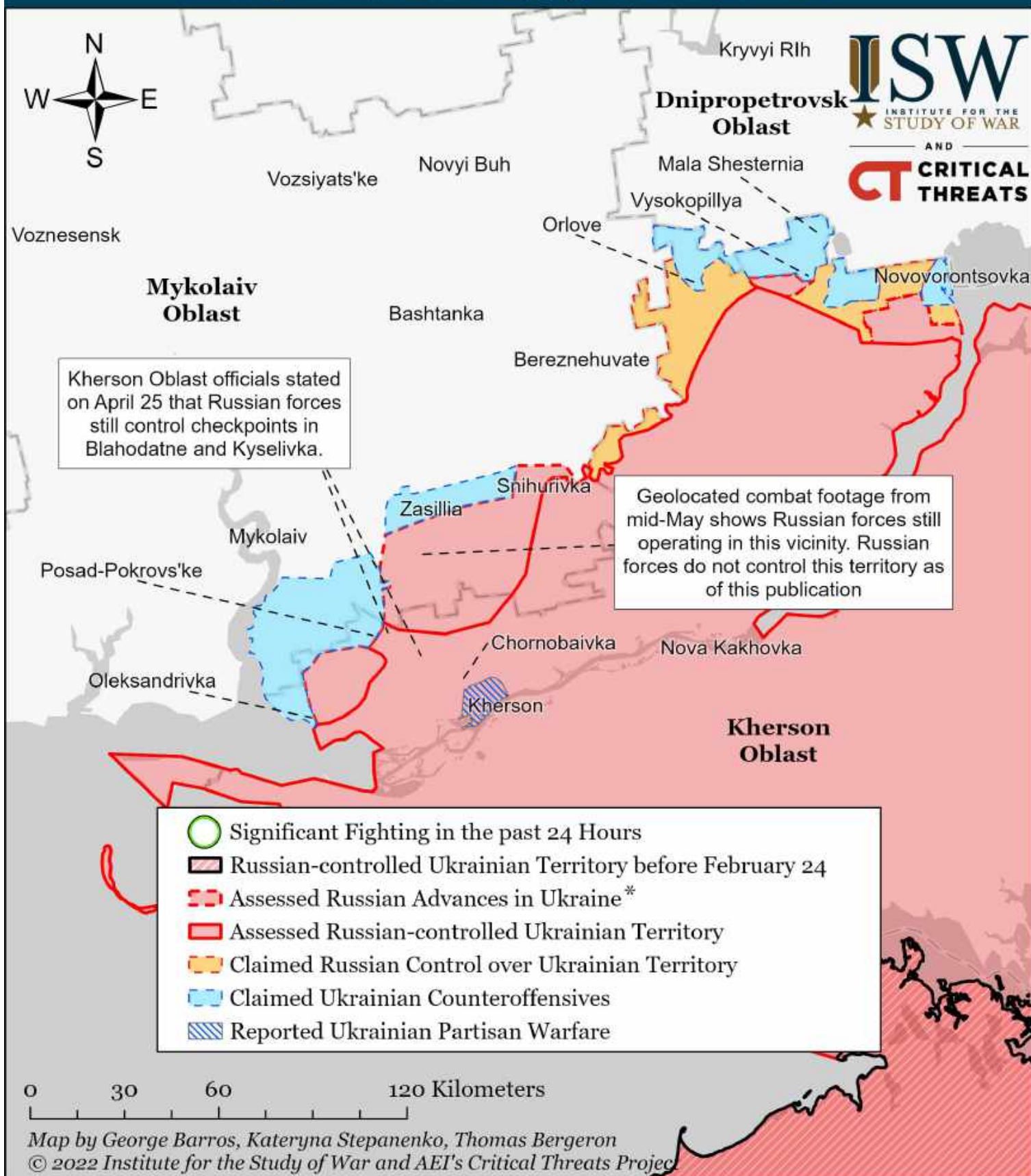
Assessed Control of Terrain Around Kherson and Mykolaiv as of May 19, 2022, 3:00 PM ET



* Assessed Russian advances are areas where ISW assesses Russian forces have operated in or launched attacks against but do not control.

Note: ISW extended Ukrainian counteroffensives around Oleksandrivka, Kherson Oblast, based on reports of Russian artillery fire in the area on May 16.

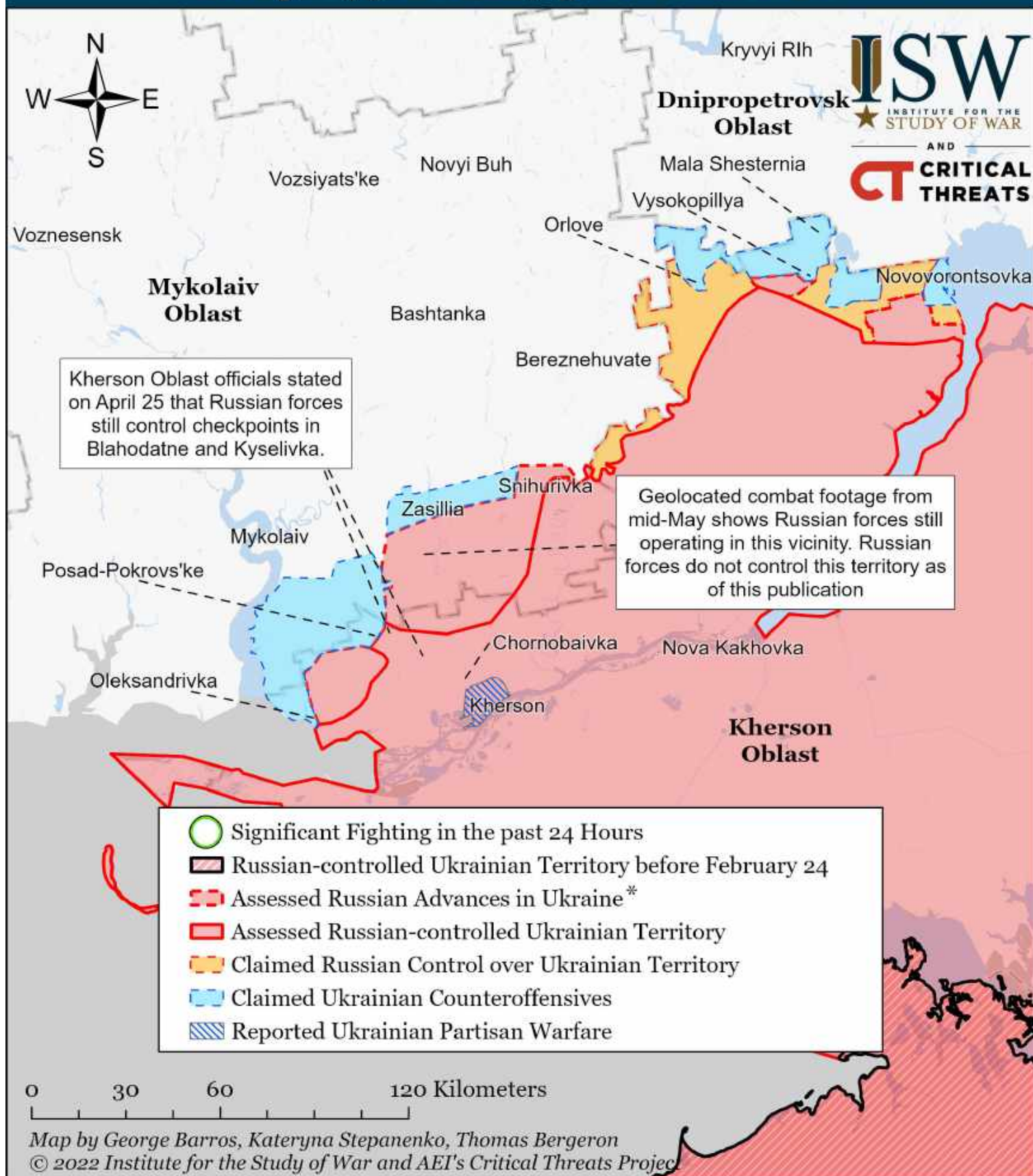
Assessed Control of Terrain Around Kherson and Mykolaiv as of May 18, 2022, 3:00 PM ET



* Assessed Russian advances are areas where ISW assesses Russian forces have operated in or launched attacks against but do not control.

Note: ISW extended Ukrainian counteroffensives around Oleksandrivka, Kherson Oblast, based on reports of Russian artillery fire in the area on May 16.

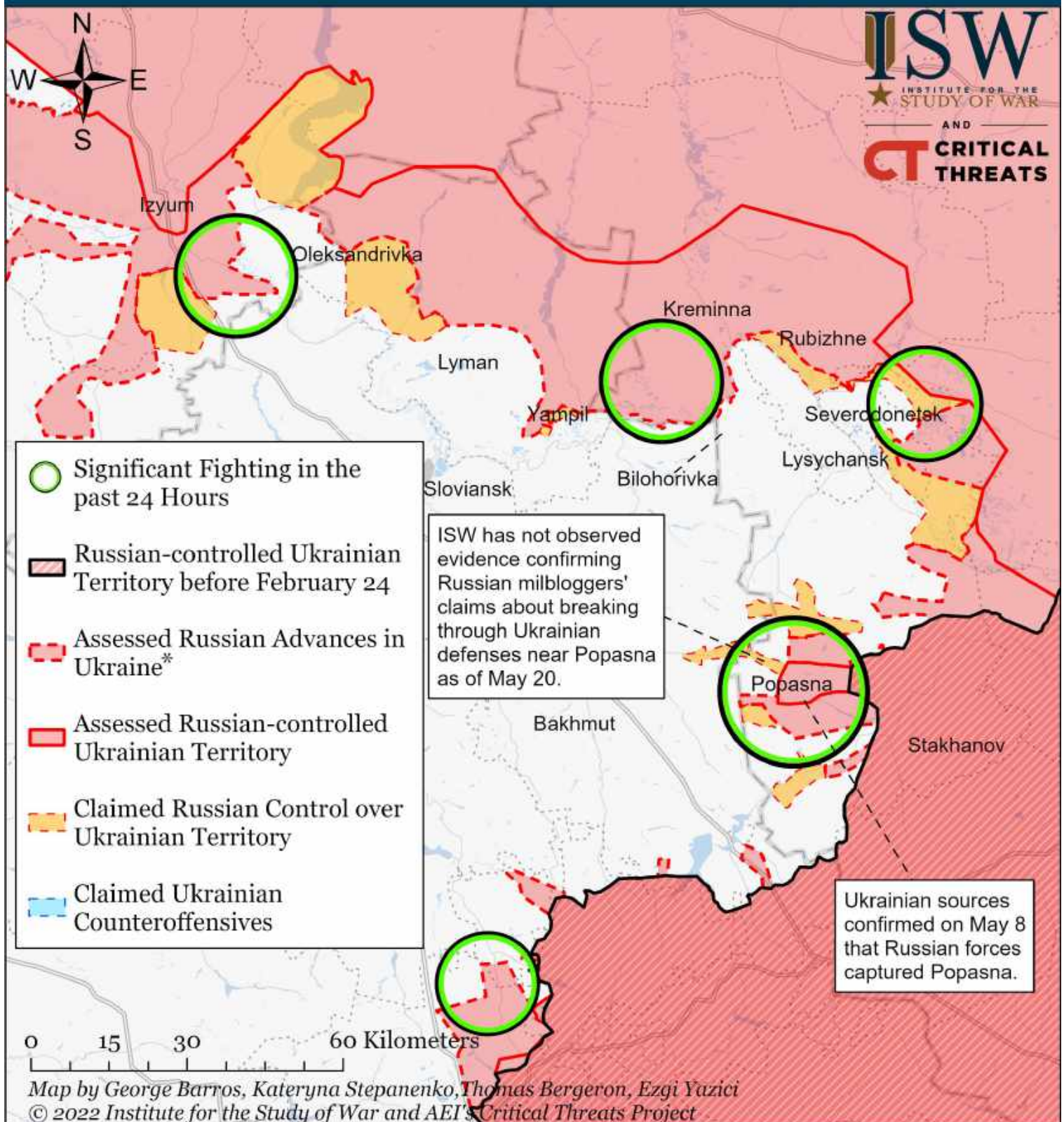
Assessed Control of Terrain Around Kherson and Mykolaiv as of May 17, 2022, 3:00 PM ET



* Assessed Russian advances are areas where ISW assesses Russian forces have operated in or launched attacks against but do not control.

Note: ISW extended Ukrainian counteroffensives around Oleksandrivka, Kherson Oblast, based on reports of Russian artillery fire in the area on May 16.

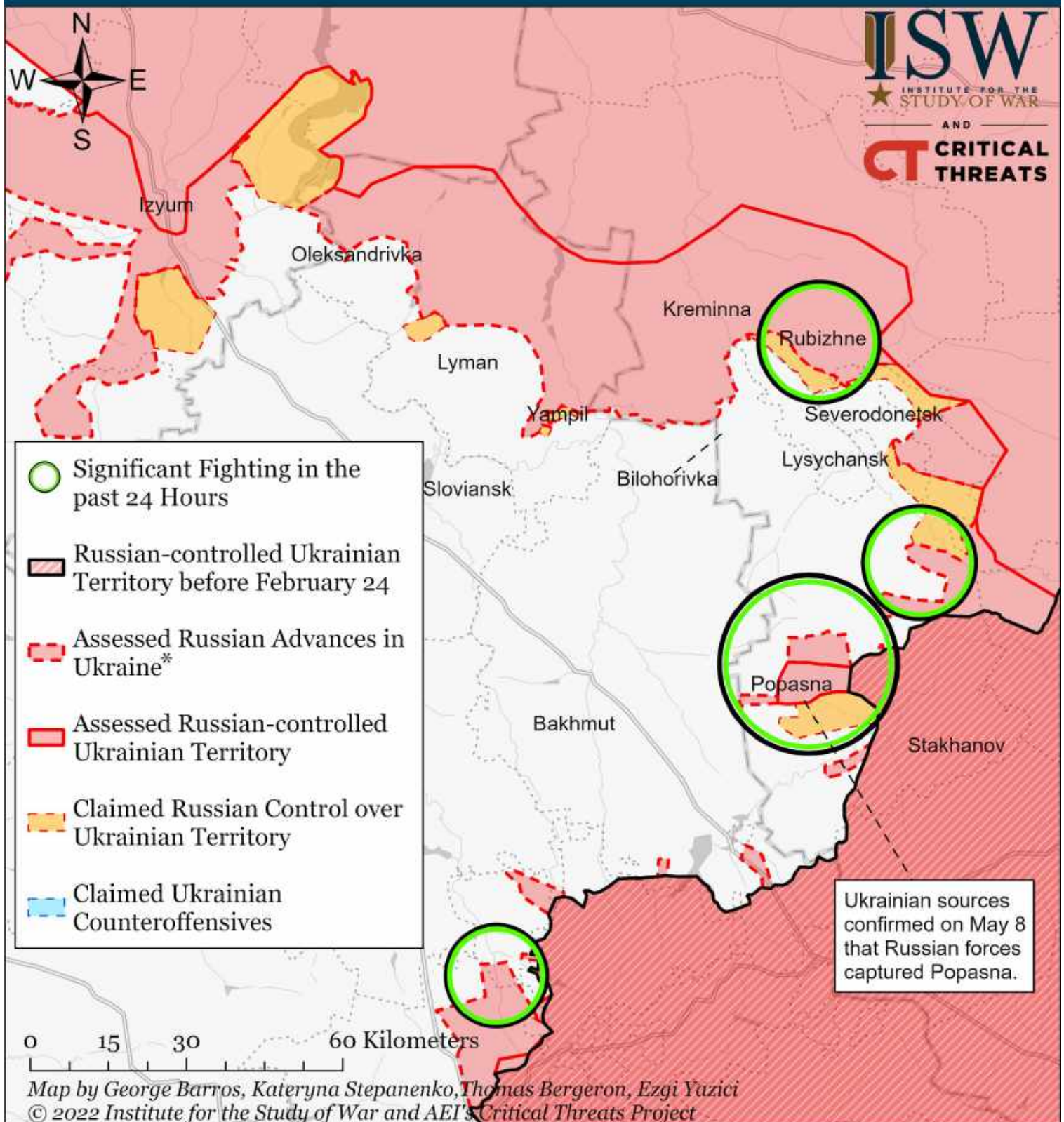
Assessed Control of Terrain Around Luhansk as of May 20, 2022, 3:00 PM ET



* Assessed Russian advances are areas where ISW assesses Russian forces have operated in or launched attacks against but do not control.

Note: Russian military bloggers and news outlets claimed that Russian forces captured Syrotne, Troitske, Trypillya, Volodymyrivka, Komyshevukha, Lypove, Vyskryva, and entered Vrubivka on May 20. We will adjust our maps to reflect control of terrain (as opposed to just claims) when we observe evidence of these Russian claims.

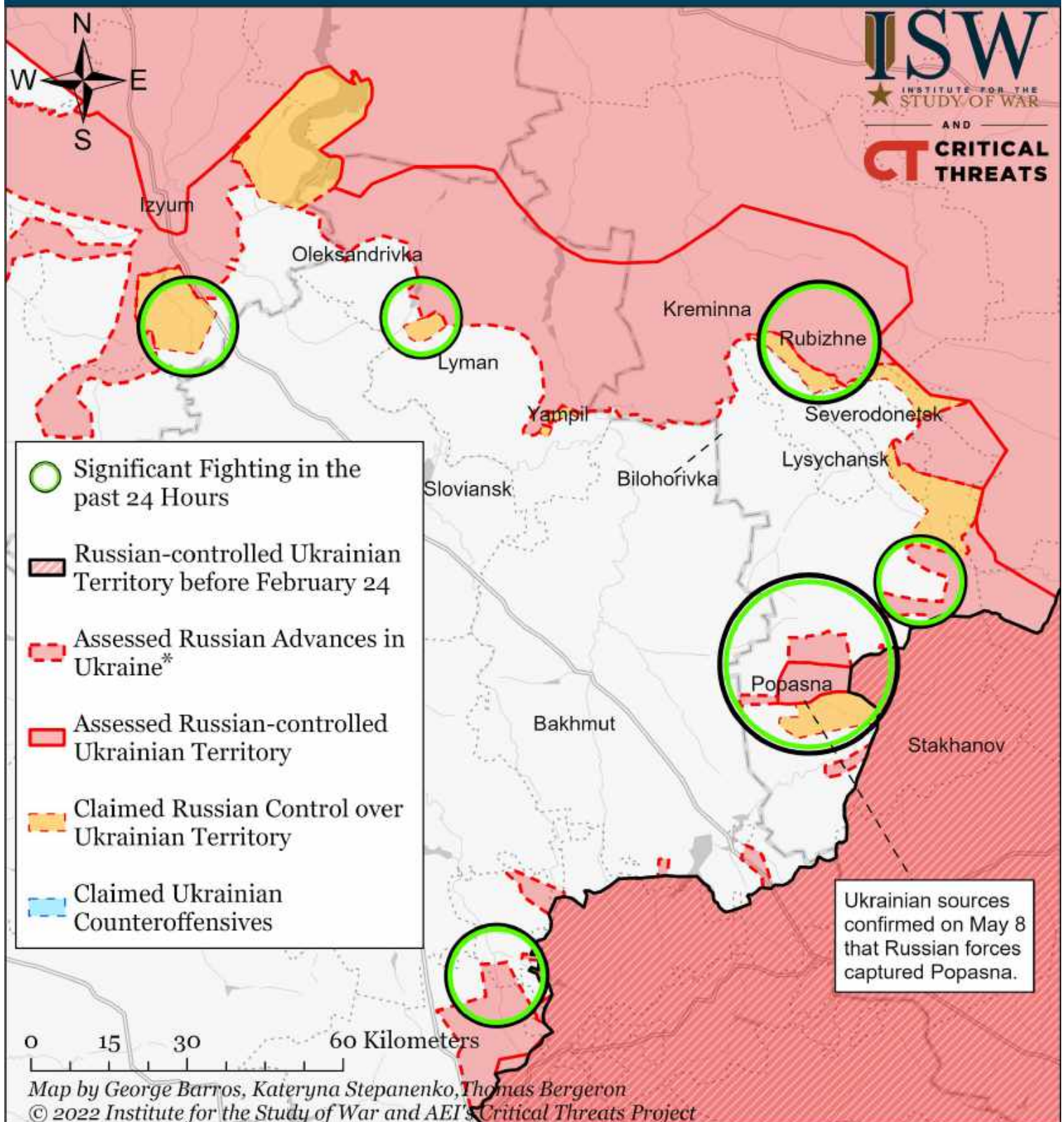
Assessed Control of Terrain Around Luhansk as of May 19, 2022, 3:00 PM ET



* Assessed Russian advances are areas where ISW assesses Russian forces have operated in or launched attacks against but do not control.

Note: We have expanded Russian assessed advances to Rubizhne and Voevodivka based on Ukrainian local administration reports that Russian forces seized the settlements on May 12. Donetsk People's Republic (DNR) officials claimed that DNR and Russian forces captured Dobrysheve on May 16.

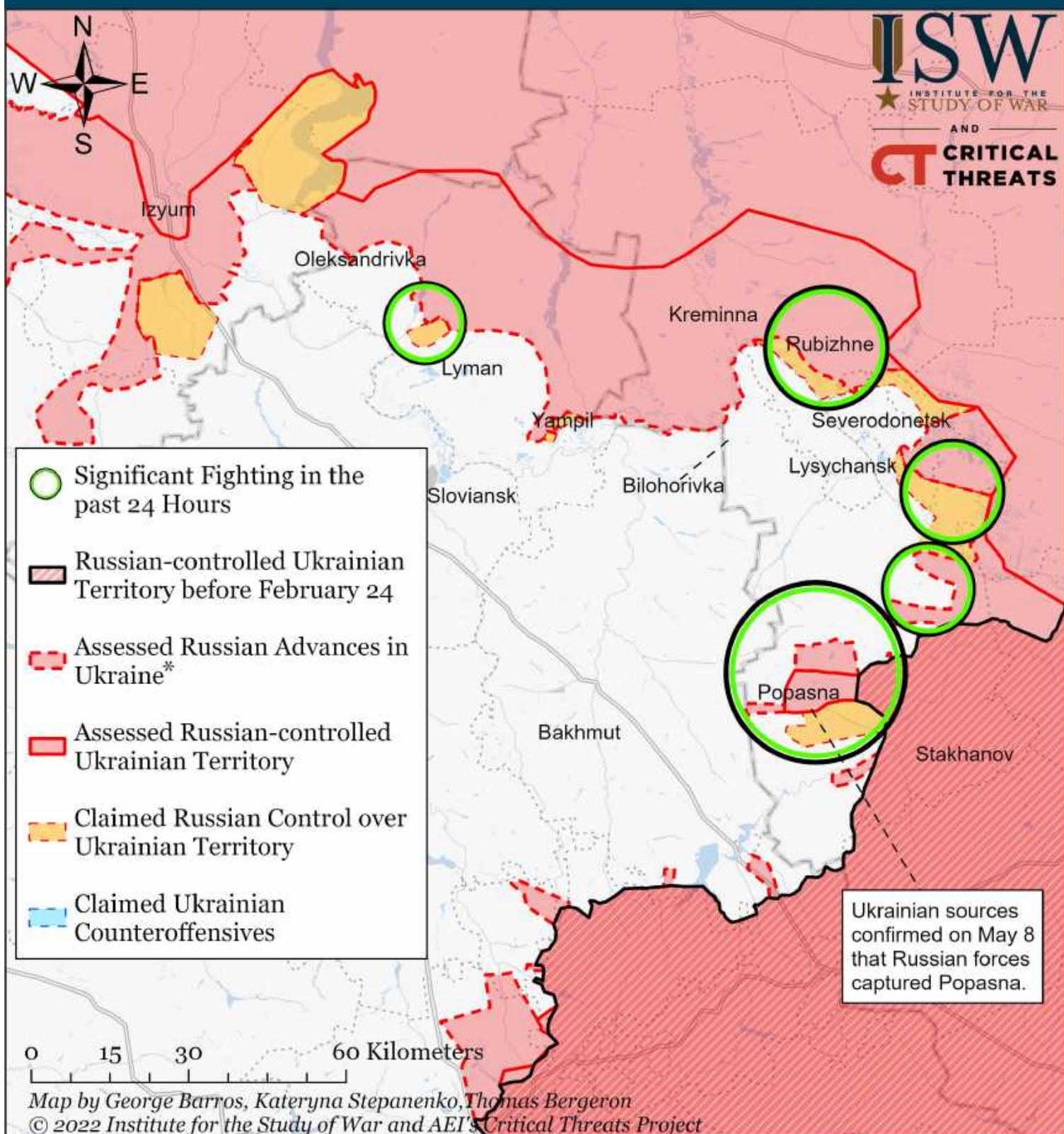
Assessed Control of Terrain Around Luhansk as of May 18, 2022, 3:00 PM ET



* Assessed Russian advances are areas where ISW assesses Russian forces have operated in or launched attacks against but do not control.

Note: We have expanded Russian assessed advances to Rubizhne and Voevodivka based on Ukrainian local administration reports that Russian forces seized the settlements on May 12. Donetsk People's Republic (DNR) officials claimed that DNR and Russian forces captured Dobrysheve on May 16.

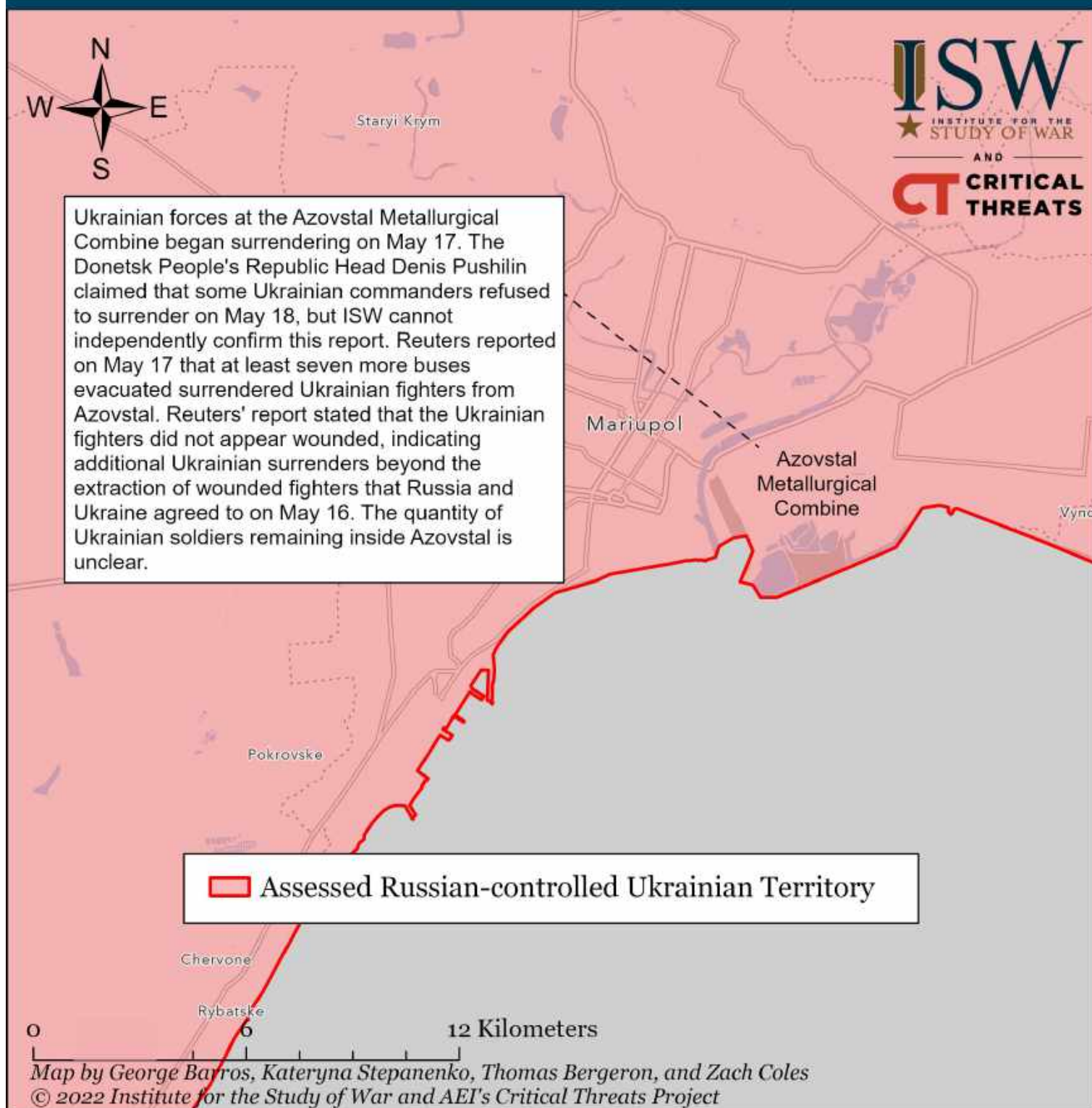
Assessed Control of Terrain Around Luhansk as of May 17, 2022, 3:00 PM ET



* Assessed Russian advances are areas where ISW assesses Russian forces have operated in or launched attacks against but do not control.

Note: We have expanded Russian assessed advances to Rubizhne and Voevodivka based on Ukrainian local administration reports that Russian forces seized the settlements on May 12. Donetsk People's Republic (DNR) officials claimed that DNR and Russian forces captured Dobrysheve on May 16.

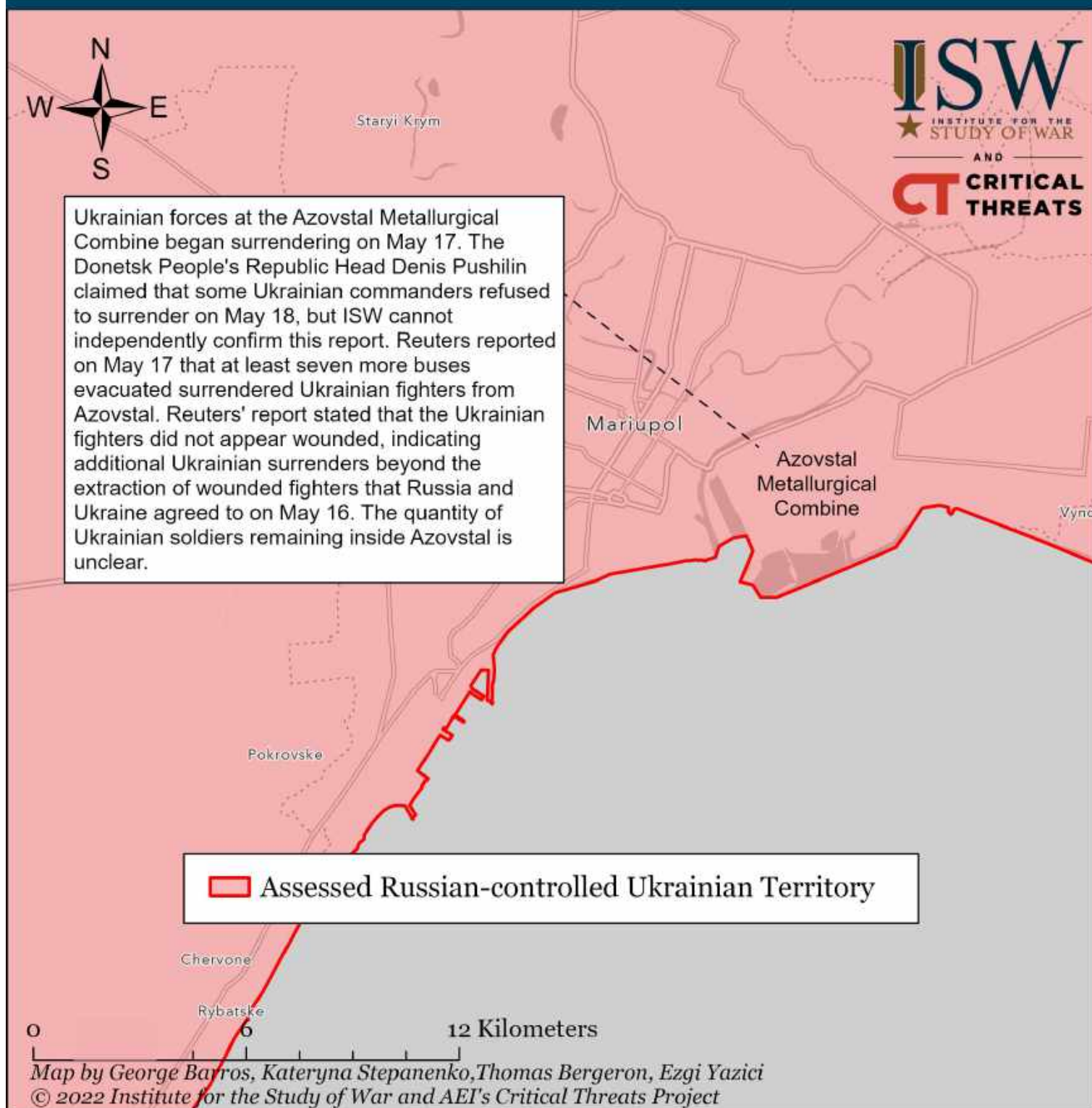
Assessed Control of Terrain Around Mariupol as of May 20, 2022, 3:00 PM ET



Commander of the Azov Regiment Denis Prokopenko stated that Azov command has given the order to stop the defense of Mariupol to save the lives of the fighters on May 20. ISW will scale down Russian-controlled territory over Azovstal if independent sources confirm that some Ukrainian forces refused to surrender.

* Assessed Russian advances are areas where ISW assesses Russian forces have operated in or launched attacks against but do not control.

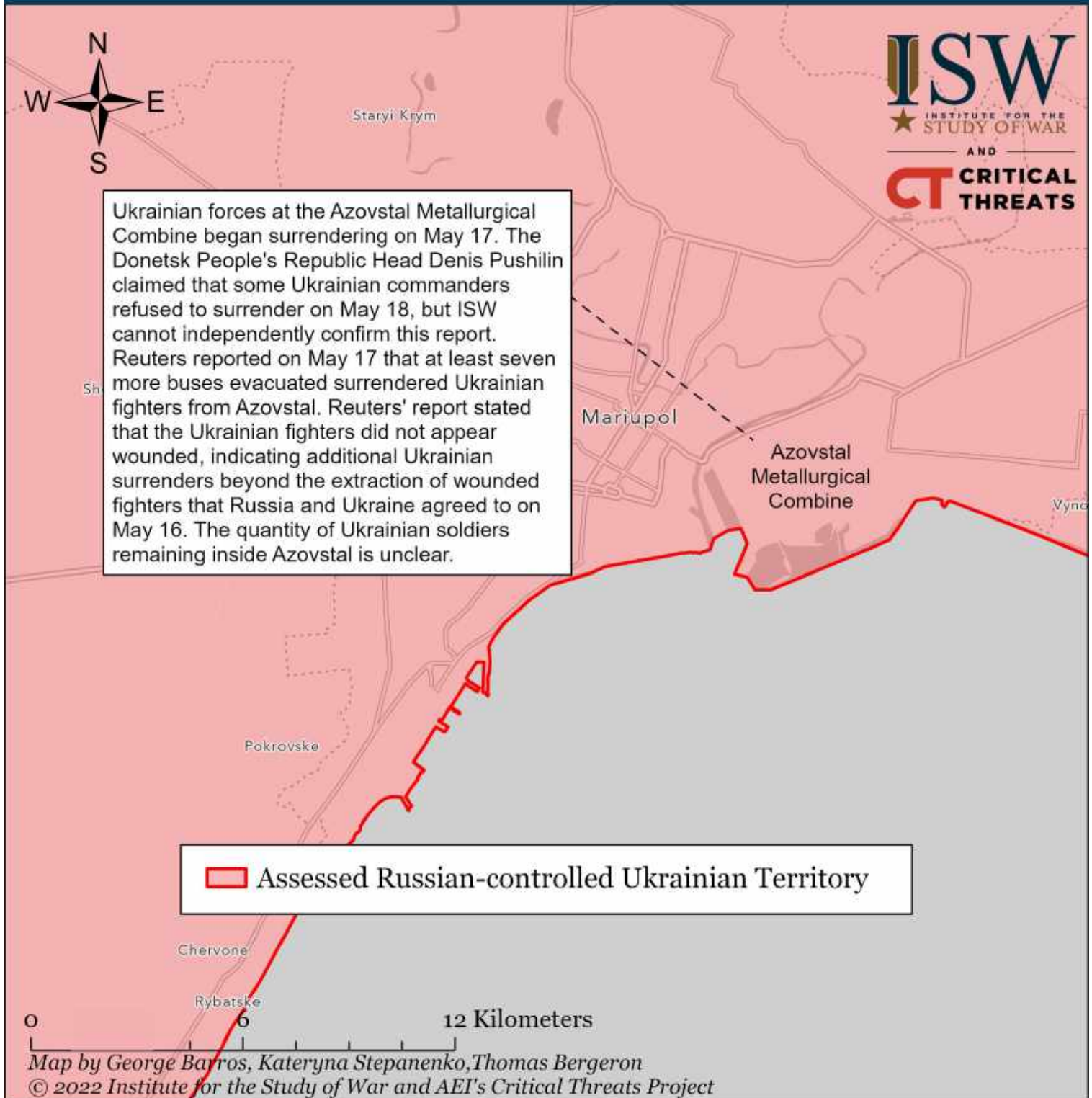
Assessed Control of Terrain Around Mariupol as of May 19, 2022, 3:00 PM ET



Deputy Ukrainian Defense Minister Hanna Malyar emphasized on May 17 that the Ukrainian authorities have no other way to save Ukrainian troops in Azovstal in other than surrendering them to Russian forces and then exchanging them in a prisoner exchange. ISW will scale down Russian controlled territory over Azovstal if independent sources confirm that some Ukrainian forces refused to surrender.

* Assessed Russian advances are areas where ISW assesses Russian forces have operated in or launched attacks against but do not control.

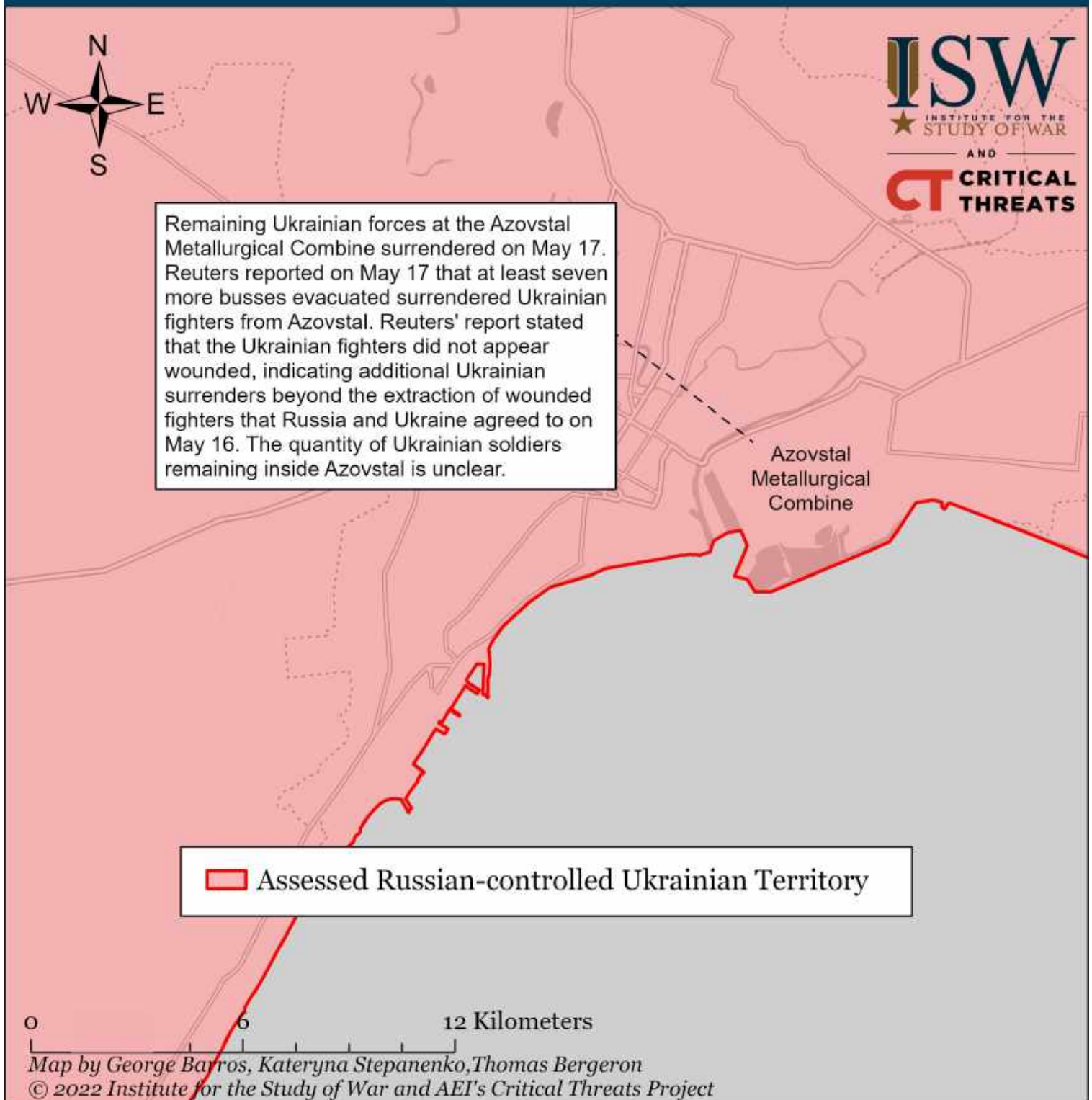
Assessed Control of Terrain Around Mariupol as of May 18, 2022, 3:00 PM ET



Deputy Ukrainian Defense Minister Hanna Malyar emphasized on May 17 that the Ukrainian authorities have no other way to save Ukrainian troops in Azovstal in other than surrendering them to Russian forces and then exchanging them in a prisoner exchange. ISW will scale down Russian controlled territory over Azovstal if independent sources confirm that some Ukrainian forces refused to surrender.

* Assessed Russian advances are areas where ISW assesses Russian forces have operated in or launched attacks against but do not control.

Assessed Control of Terrain Around Mariupol as of May 17, 2022, 3:00 PM ET



Deputy Ukrainian Defense Minister Hanna Malyar emphasized on May 17 that the Ukrainian authorities have no other way to save Ukrainian troops in Azovstal in other than surrendering them to Russian forces and then exchanging them in a prisoner exchange.

* Assessed Russian advances are areas where ISW assesses Russian forces have operated in or launched attacks against but do not control.