

Assessed Control of Terrain in Ukraine and Main Russian Maneuver Axes as of May 24, 2022, 3:00 PM ET



Map by George Barros, Kateryna Stepanenko, Thomas Bergeron, and Ezgi Yazici
© 2022 Institute for the Study of War and AEI's Critical Threats Project

* Assessed Russian advances are areas where ISW assesses Russian forces have operated in or launched attacks against but do not control.

Assessed Control of Terrain in Ukraine and Main Russian Maneuver Axes as of May 23, 2022, 3:00 PM ET



Map by George Barros, Kateryna Stepanenko, and Thomas Bergeron
© 2022 Institute for the Study of War and AEI's Critical Threats Project

* Assessed Russian advances are areas where ISW assesses Russian forces have operated in or launched attacks against but do not control.

Assessed Control of Terrain in Ukraine and Main Russian Maneuver Axes as of May 22, 2022, 3:00 PM ET



Map by George Barros, Kateryna Stepanenko, and Thomas Bergeron
© 2022 Institute for the Study of War and AEI's Critical Threats Project

* Assessed Russian advances are areas where ISW assesses Russian forces have operated in or launched attacks against but do not control.

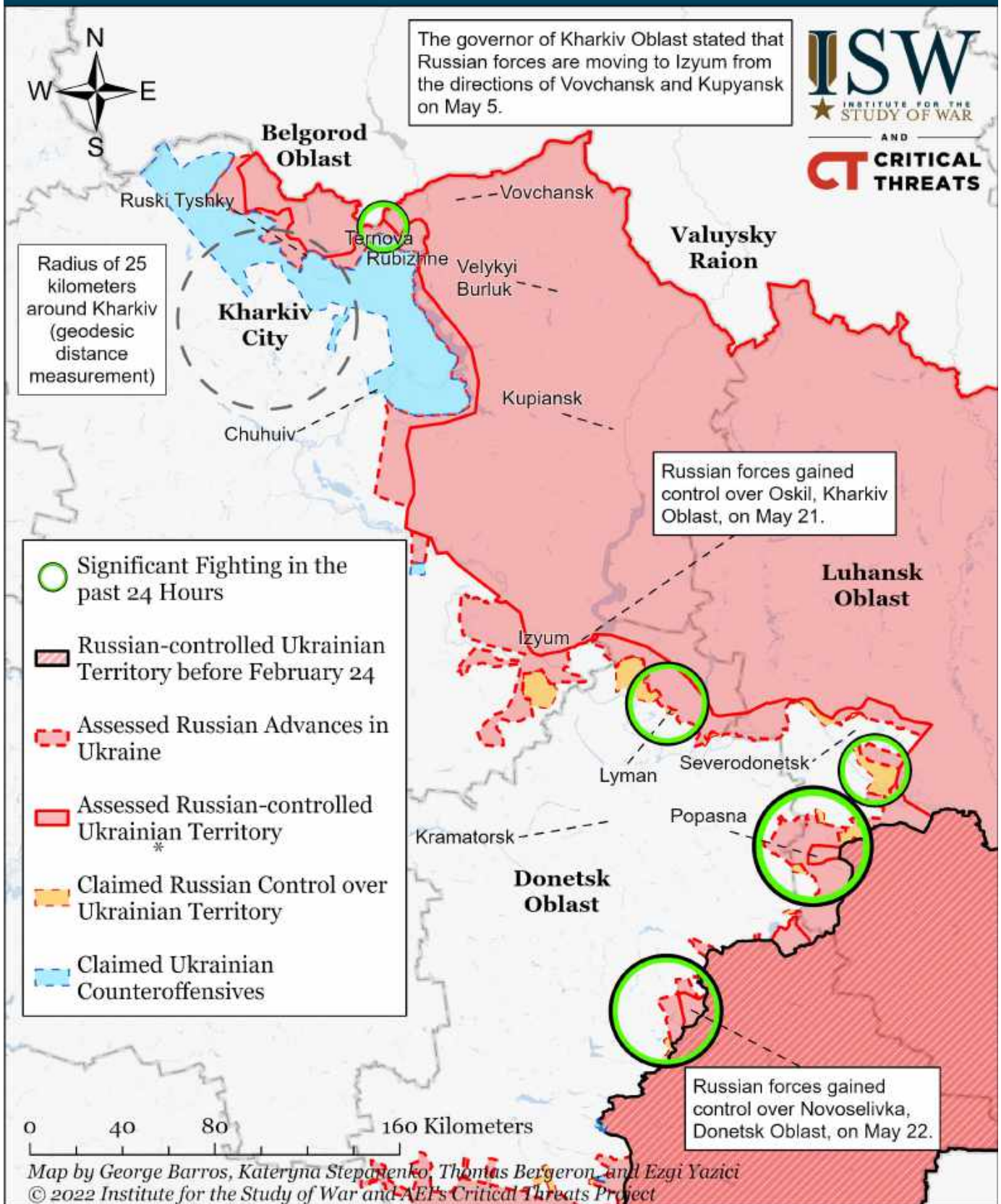
Assessed Control of Terrain in Ukraine and Main Russian Maneuver Axes as of May 21, 2022, 3:00 PM ET



Map by George Barros, Kateryna Stepanenko, and Thomas Bergeron
© 2022 Institute for the Study of War and AEI's Critical Threats Project

* Assessed Russian advances are areas where ISW assesses Russian forces have operated in or launched attacks against but do not control.

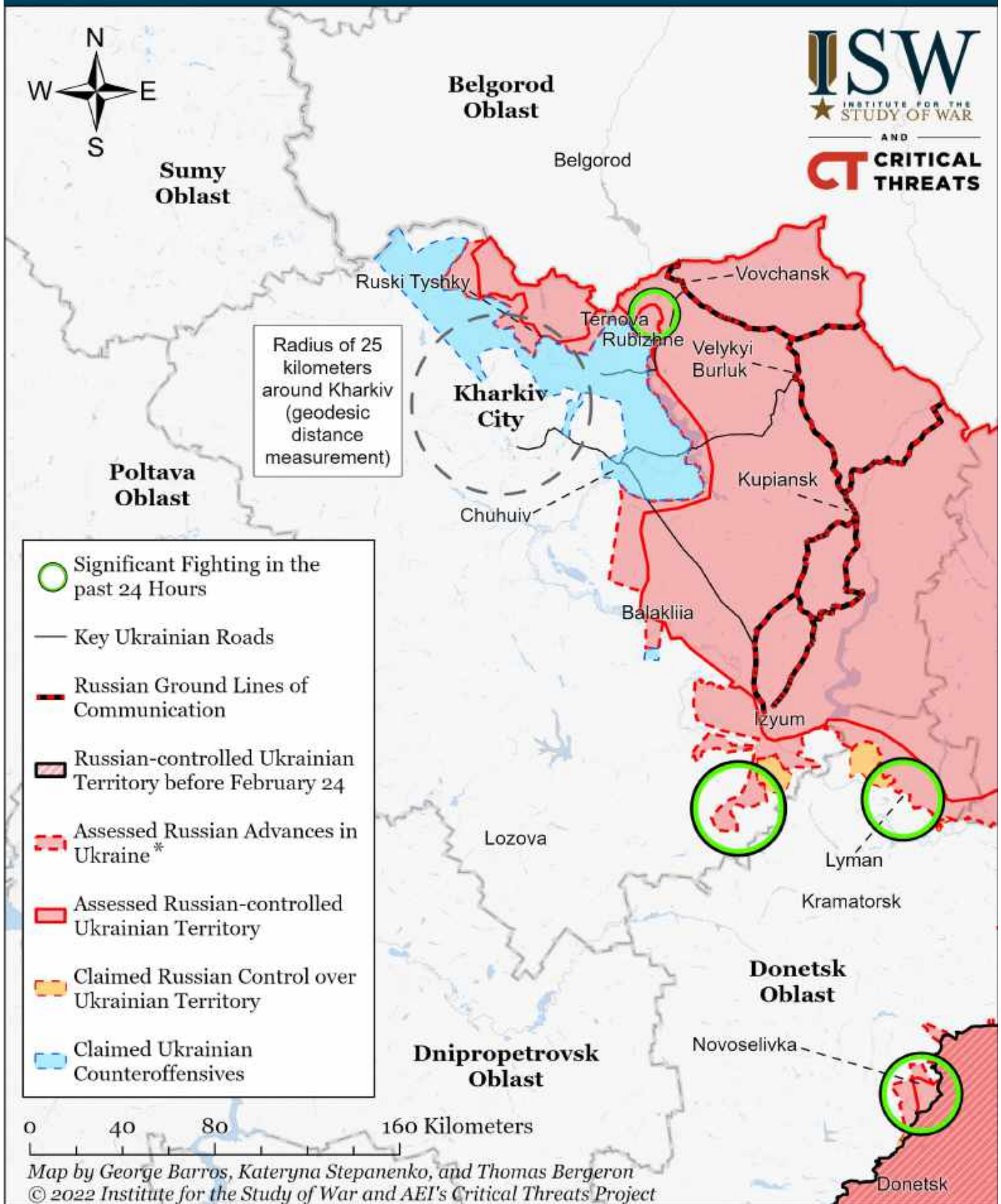
Assessed Control of Terrain Around Kharkiv as of May 24, 2022, 3:00 PM ET



* Assessed Russian advances are areas where ISW assesses Russian forces have operated in or launched attacks against but do not control.

Note: We extended Russian claimed control to the north of Lyman given the Donetsk People's Republic report that Russian forces seized the northern part of the settlement on May 24. ISW previously extended Russian assessed advances in the northern outskirts of the settlement based on reports of fighting on May 23. We cannot verify reports that Russian forces have captured northern parts of the city and taken Ukrainian soldiers prisoner as of this publication. We will update our maps when we collect enough information to do so.

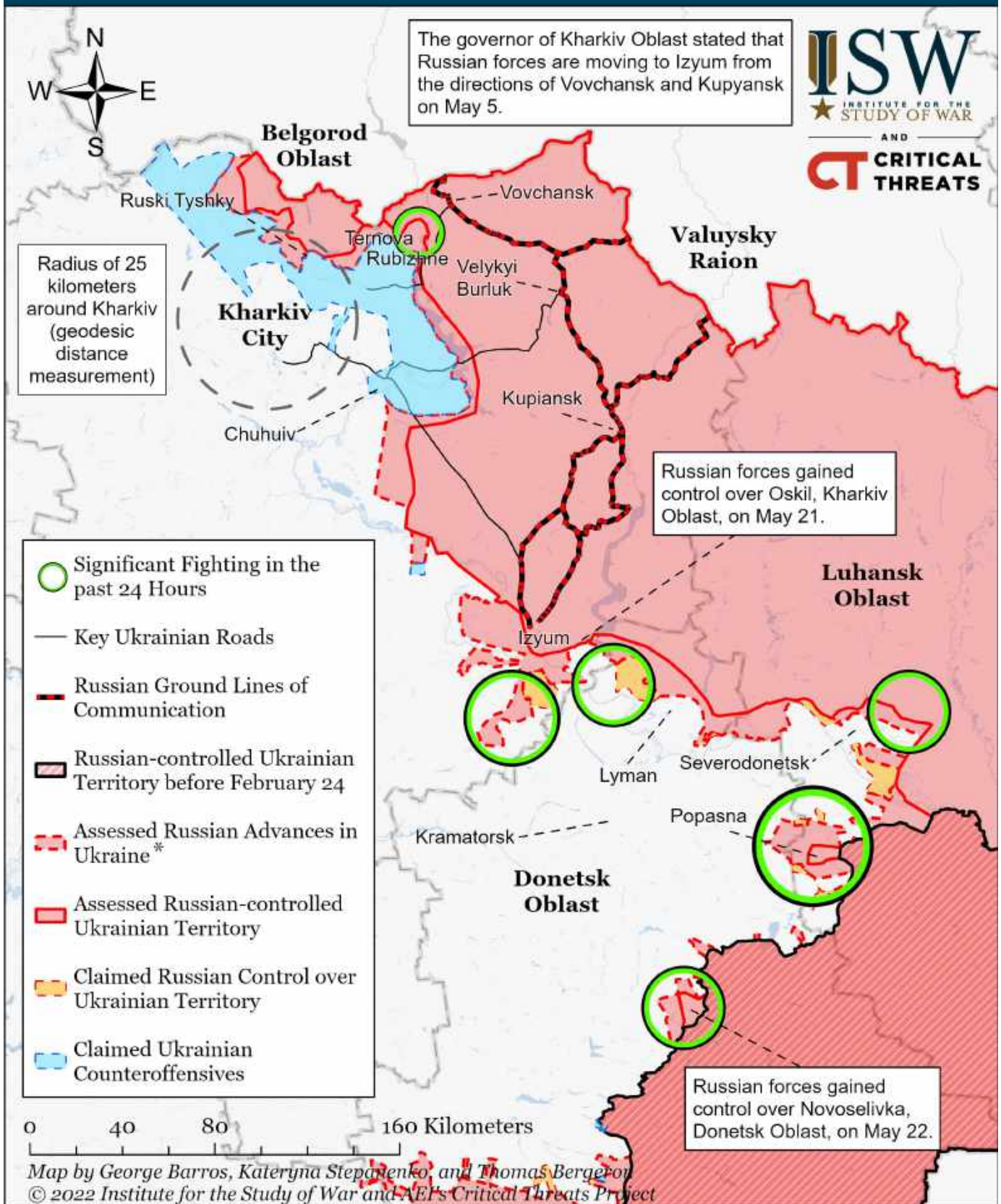
Assessed Control of Terrain Around Kharkiv as of May 23, 2022, 3:00 PM ET



* Assessed Russian advances are areas where ISW assesses Russian forces have operated in or launched attacks against but do not control.

Note: We advanced Russian advances to the north of Lyman given the reported fighting for Lyman. We cannot verify reports that Russian forces have captured northern parts of the city and taken Ukrainian soldiers prisoner as of this publication. We will update our maps when we collect enough information to do so.

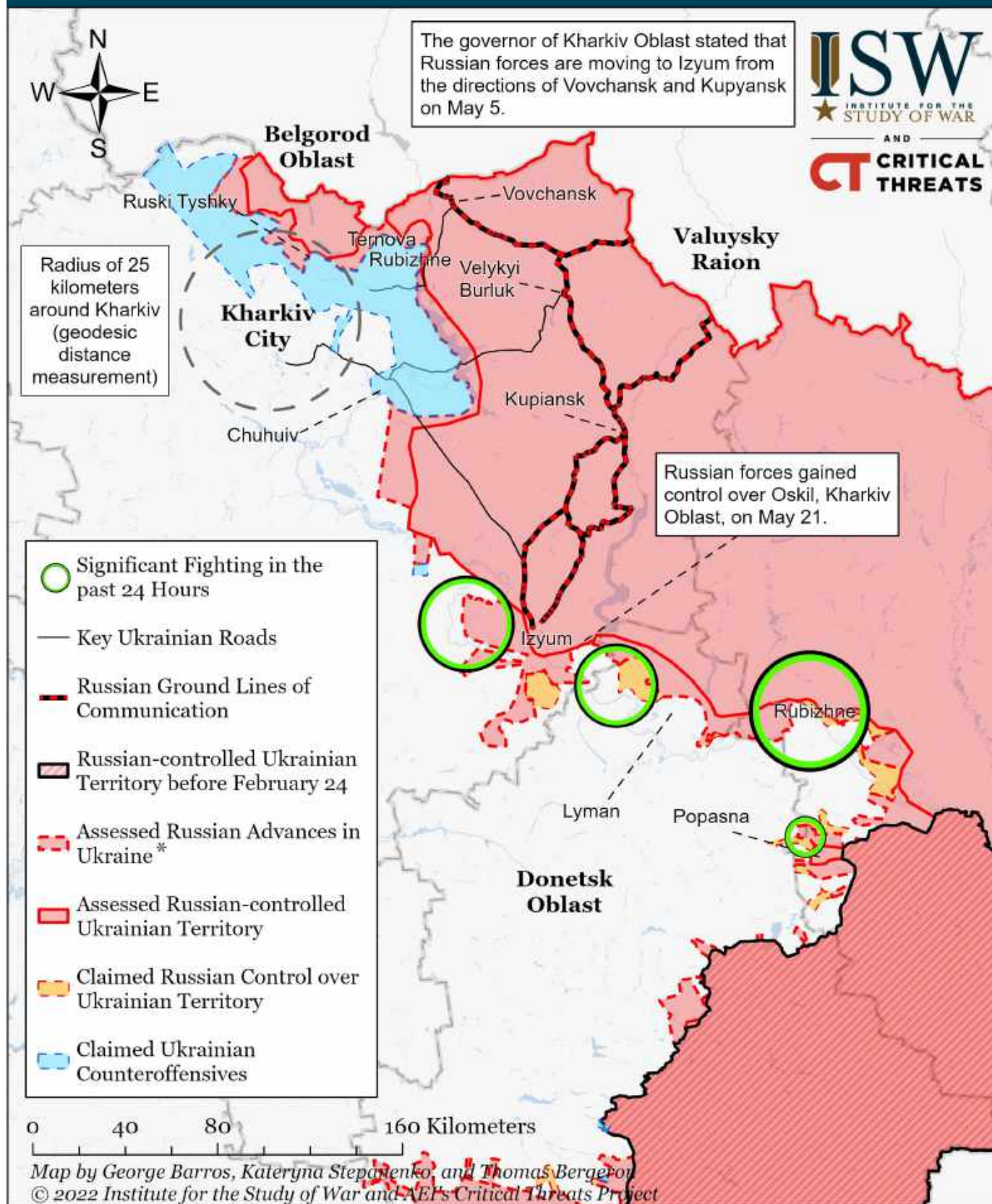
Assessed Control of Terrain Around Kharkiv as of May 22, 2022, 3:00 PM ET



* Assessed Russian advances are areas where ISW assesses Russian forces have operated in or launched attacks against but do not control.

Note: We recoded Rubizhne in Kharkiv Oblast as Russian advances after observing Luhansk People's Republic elements near the town on May 22. This evidence supports earlier reports that Russian forces recaptured Rubizhne around May 20.

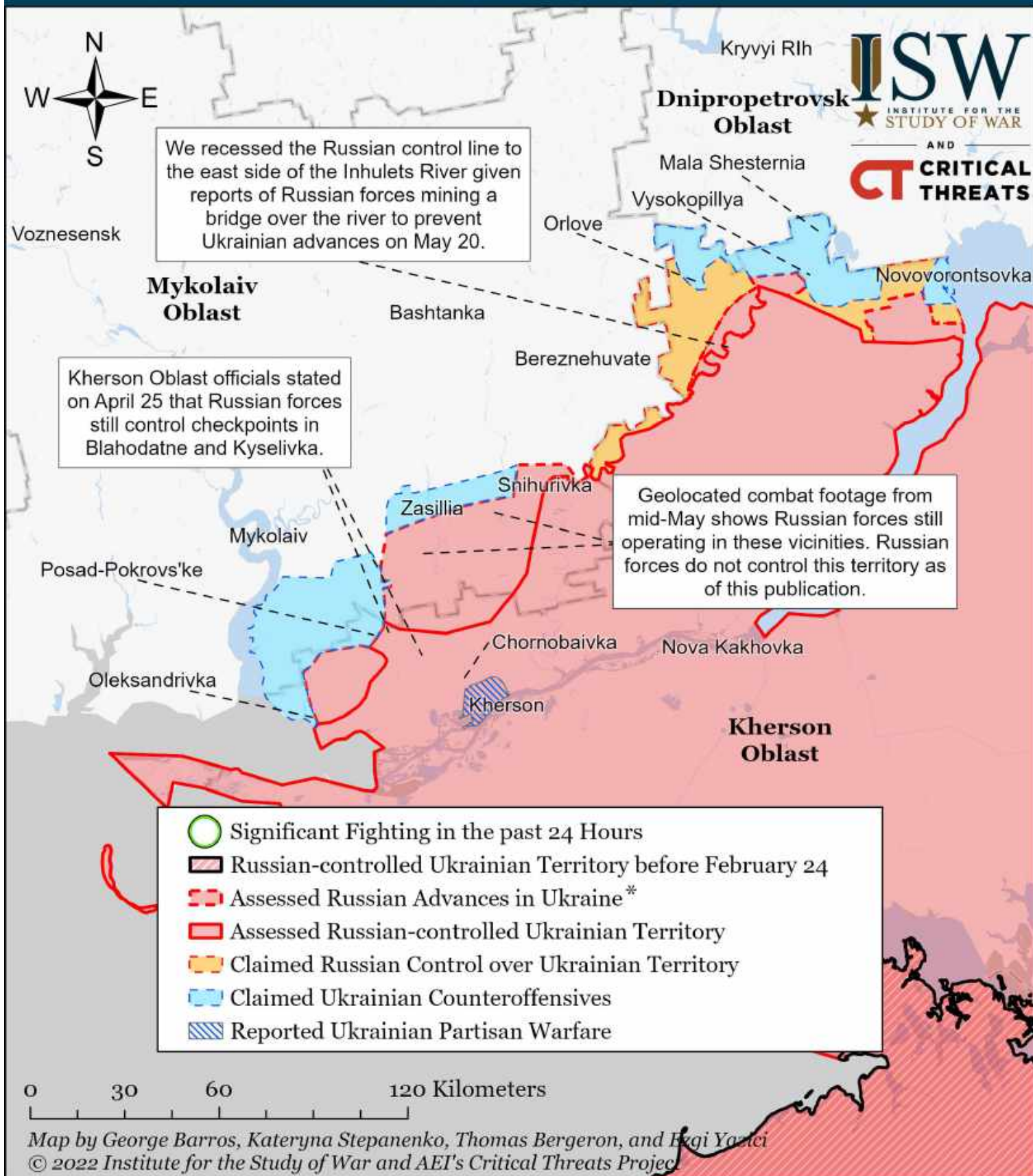
Assessed Control of Terrain Around Kharkiv as of May 21, 2022, 3:00 PM ET



* Assessed Russian advances are areas where ISW assesses Russian forces have operated in or launched attacks against but do not control.

We have not observed open-source evidence to confirm reports that Russian forces captured Ternova and Rubizhne in Kharkiv Oblast on May 20. Pro-Russian Telegram channels claimed that Russian forces attacked Tsyrukun and Zolochiv and launched a counteroffensive in Ternova on May 20. Official Ukrainian government sources stated on May 20 that fighting continued in the area of Ternova and Vesele and that Russian forces shelled Rus'ki Tyshky, but did not specify any territorial control changes. We will update our maps when we collect sufficient evidence to do so.

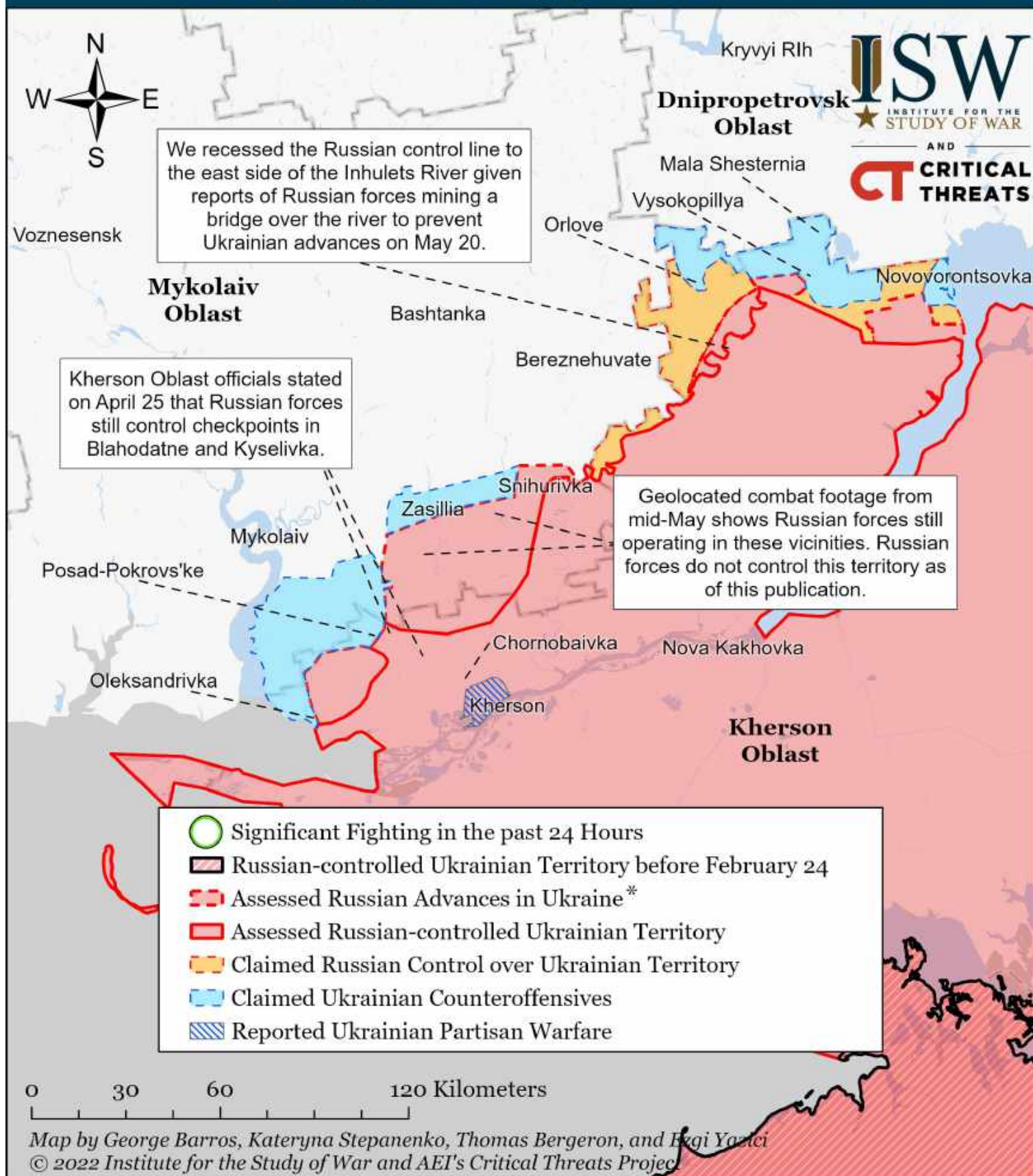
Assessed Control of Terrain Around Kherson and Mykolaiv as of May 24, 2022, 3:00 PM ET



* Assessed Russian advances are areas where ISW assesses Russian forces have operated in or launched attacks against but do not control.

Note: We recoded Potomkyne in northern Kherson Oblast to Ukrainian counteroffensives given the Kherson Regional State Administration stated on May 23 that Russian forces fired upon Potomkyne, indicating that Russian forces are not present there.

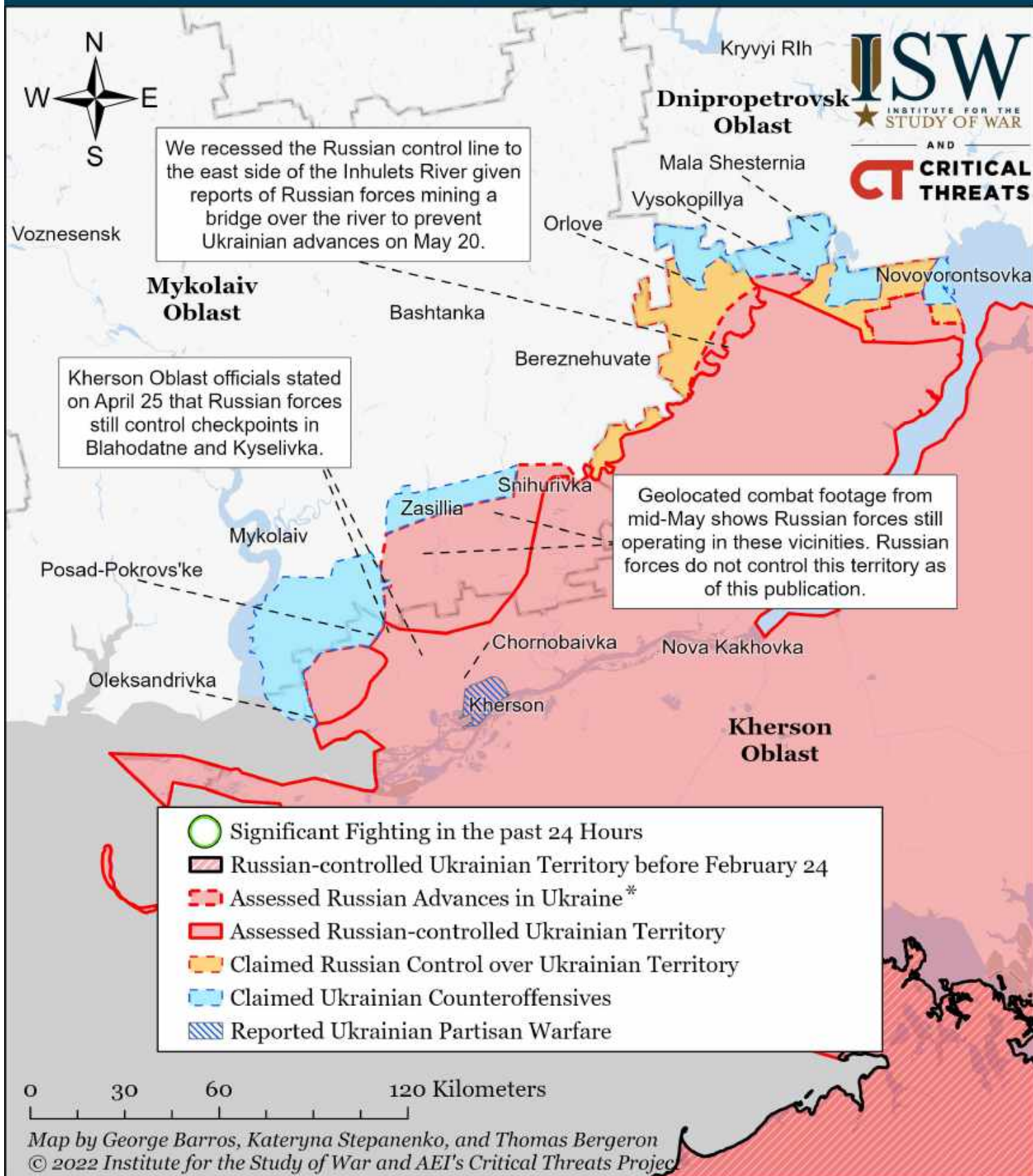
Assessed Control of Terrain Around Kherson and Mykolaiv as of May 23, 2022, 3:00 PM ET



* Assessed Russian advances are areas where ISW assesses Russian forces have operated in or launched attacks against but do not control.

Note: We recoded Potomkyne in northern Kherson Oblast to Ukrainian counteroffensives given the Kherson Regional State Administration stated on May 23 that Russian forces fired upon Potomkyne, indicating that Russian forces are not present there.

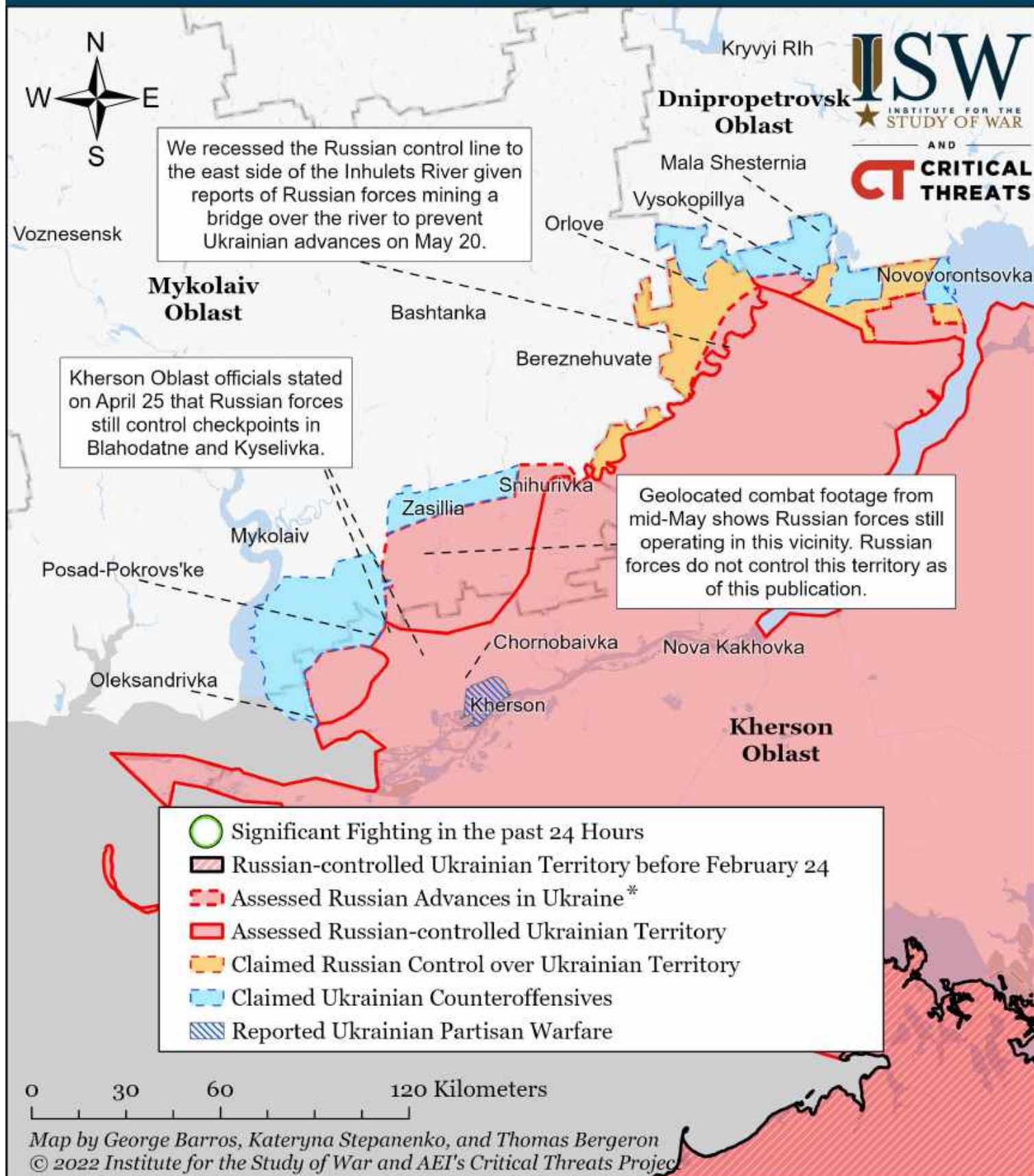
Assessed Control of Terrain Around Kherson and Mykolaiv as of May 22, 2022, 3:00 PM ET



* Assessed Russian advances are areas where ISW assesses Russian forces have operated in or launched attacks against but do not control.

Note: Ukraine's Operational Command South stated on May 20 that Russian forces in the southern direction have not conducted active offensive operations for a long time. This claim is consistent with the lack of observed Russian offensive operations in this area for several weeks.

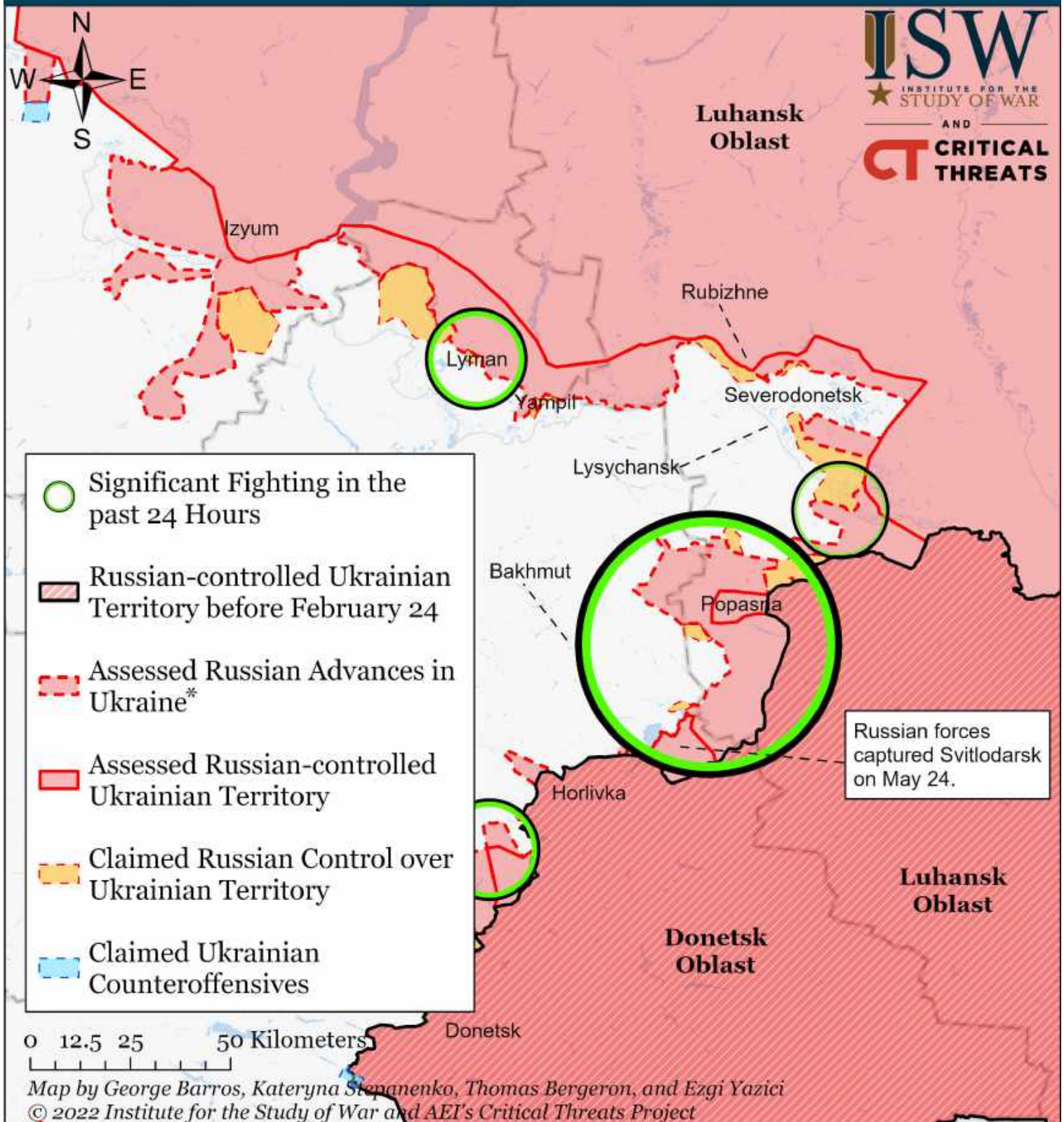
Assessed Control of Terrain Around Kherson and Mykolaiv as of May 21, 2022, 3:00 PM ET



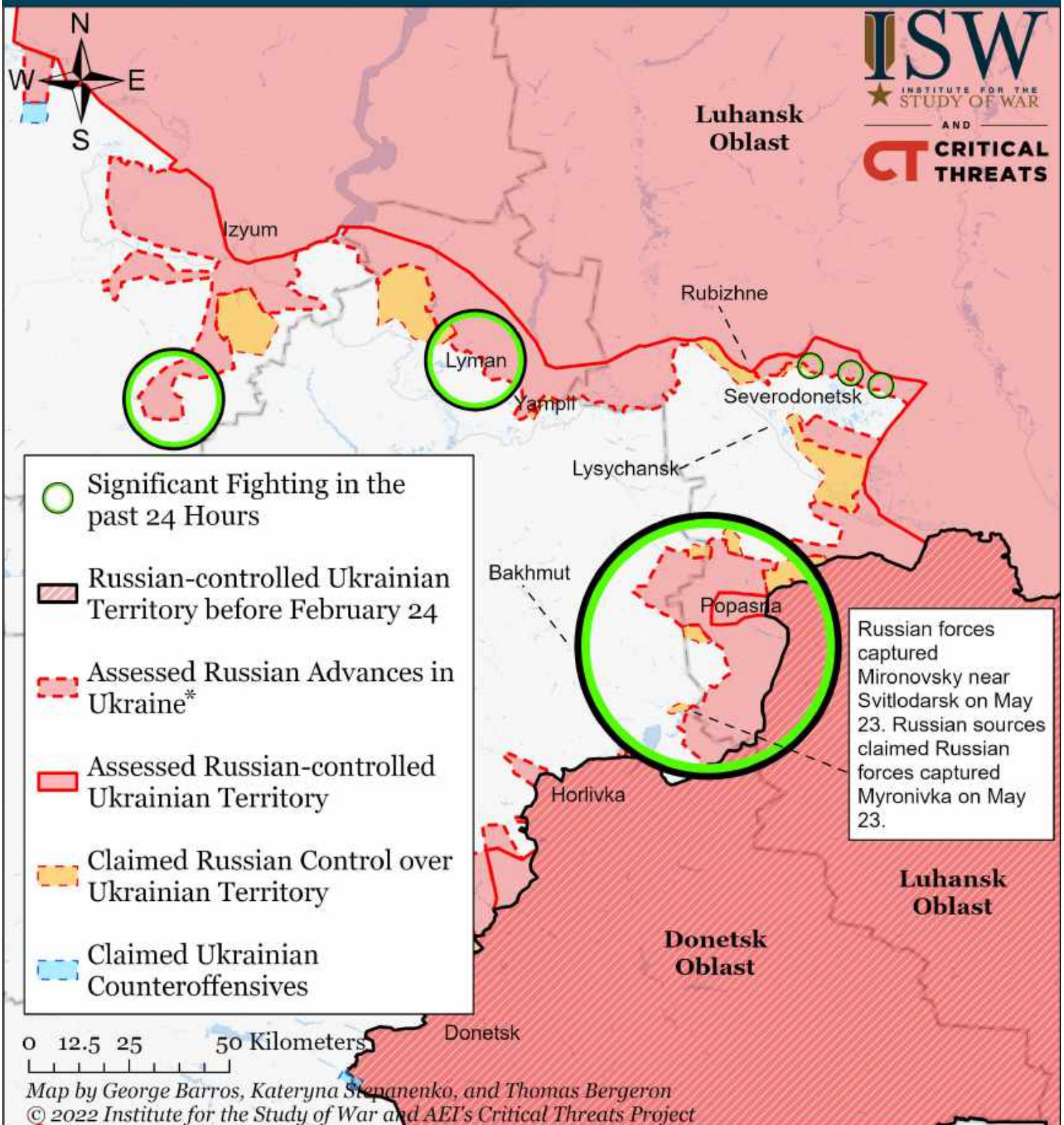
* Assessed Russian advances are areas where ISW assesses Russian forces have operated in or launched attacks against but do not control.

Note: Ukraine's Operational Command South stated on May 20 that Russian forces in the southern direction have not conducted active offensive operations for a long time. This claim is consistent with the lack of observed Russian offensive operations in this area for several weeks.

Assessed Control of Terrain Around Luhansk as of May 24, 2022, 3:00 PM ET



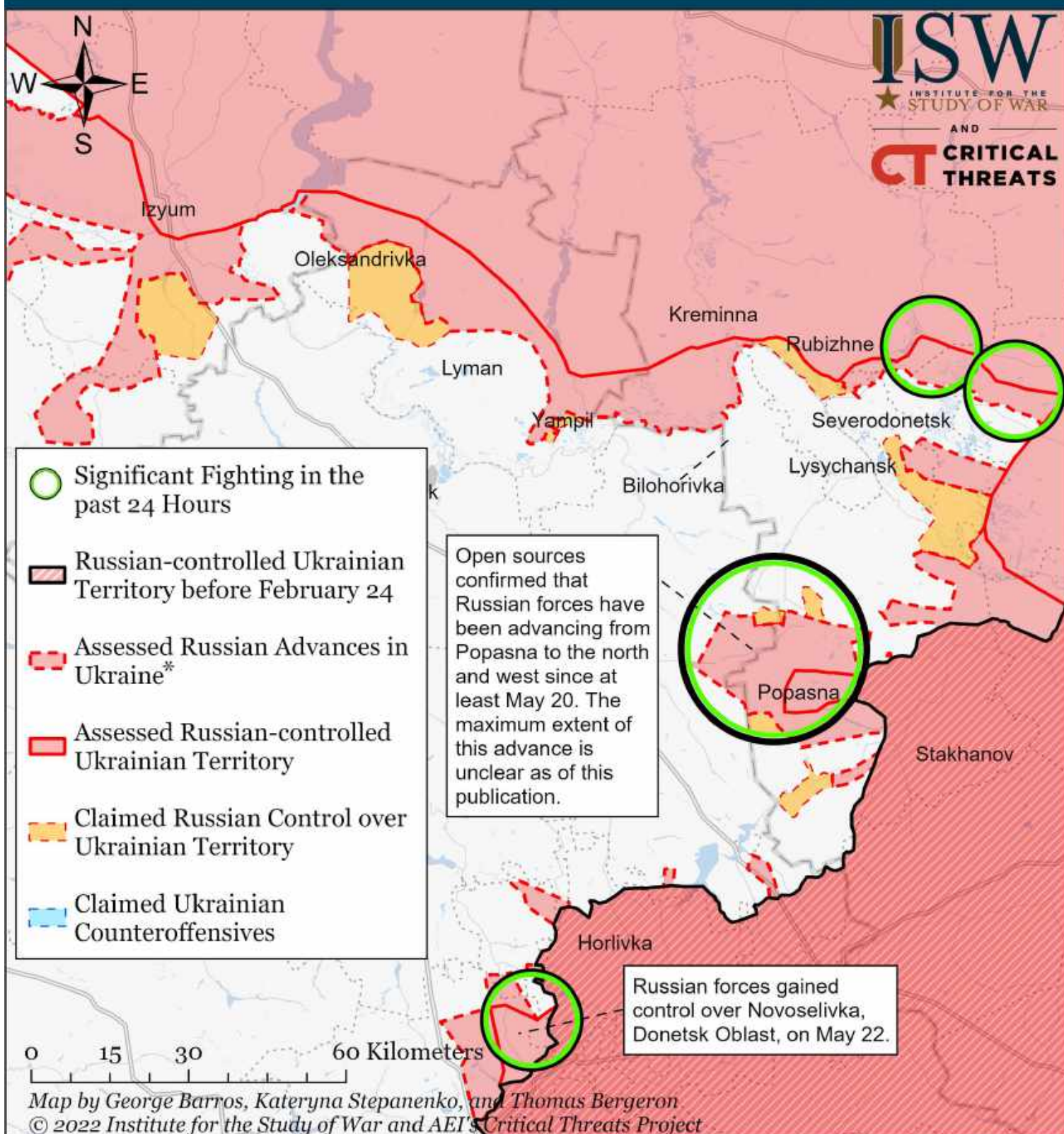
Assessed Control of Terrain Around Luhansk as of May 23, 2022, 3:00 PM ET



* Assessed Russian advances are areas where ISW assesses Russian forces have operated in or launched attacks against but do not control.

Note: We refined our frontlines in Severodonetsk on May 22 based on observing new information. We slightly recessed assessed Russian control given that the Ukrainian General Staff stated on May 22 that Ukrainian forces repelled Russian assaults against Oskolonivka, Oleksanrivka, Purdivka, Shchedryshcheve, and Smolyaninove, indicating that Ukrainian forces control these areas.

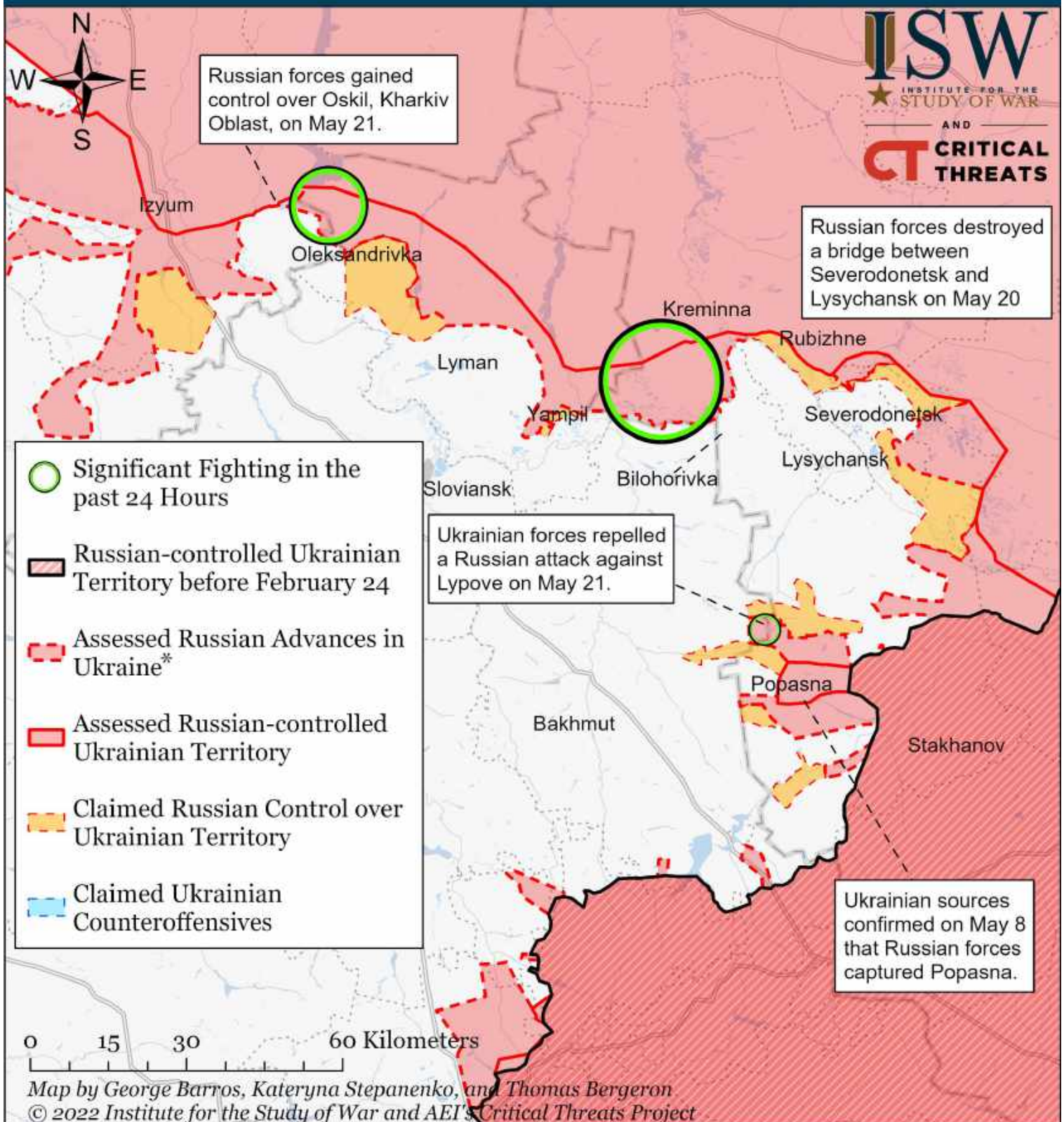
Assessed Control of Terrain Around Luhansk as of May 22, 2022, 3:00 PM ET



* Assessed Russian advances are areas where ISW assesses Russian forces have operated in or launched attacks against but do not control.

Note: We refined our frontlines in Severodonetsk on May 22 based on observing new information. We slightly recessed assessed Russian control given that the Ukrainian General Staff stated on May 22 that Ukrainian forces repelled Russian assaults against Oskolonivka, Oleksandrivka, Purdivka, Shchedryshcheve, and Smolyaninove, indicating that Ukrainian forces control these areas.

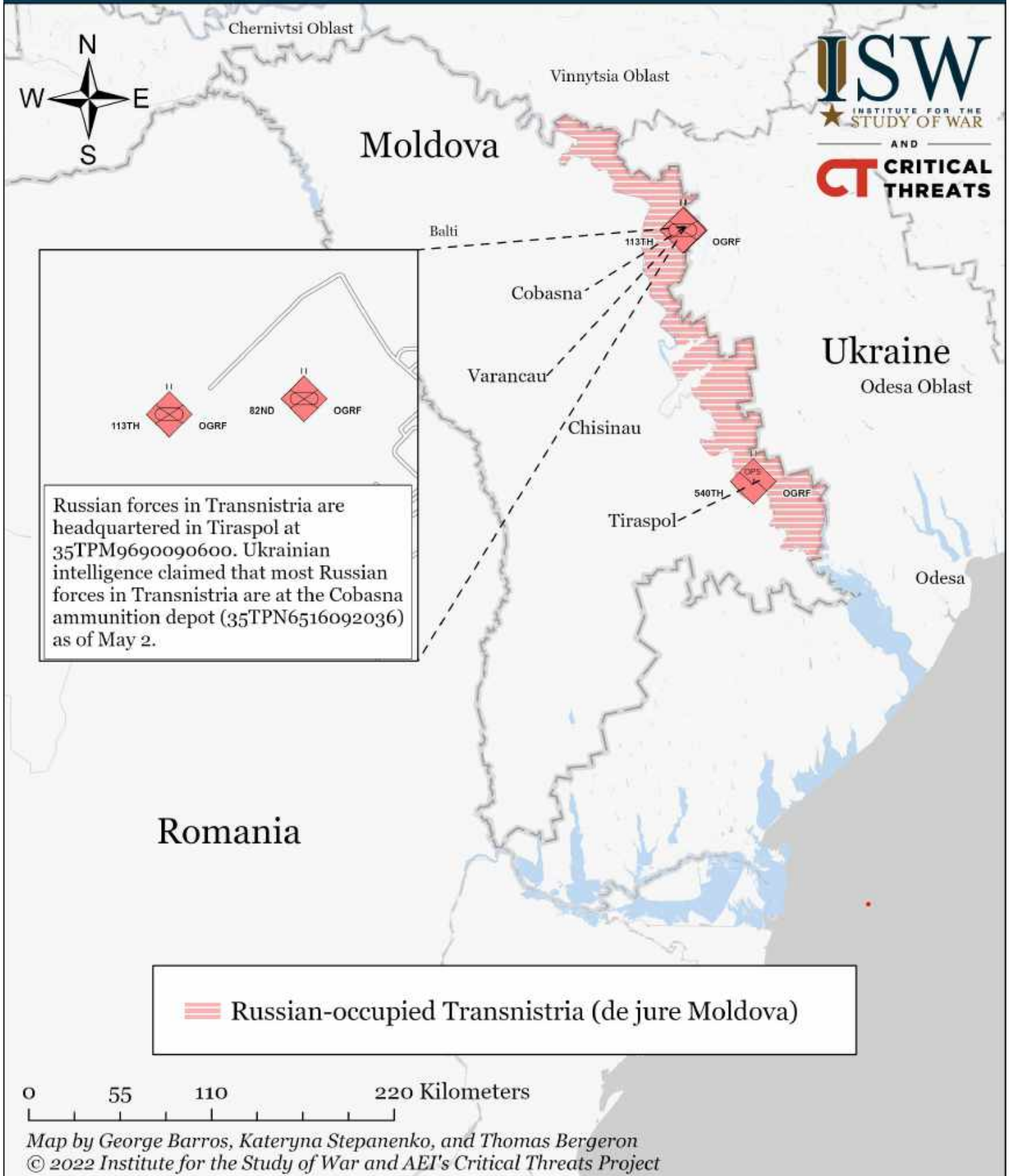
Assessed Control of Terrain Around Luhansk as of May 21, 2022, 3:00 PM ET



* Assessed Russian advances are areas where ISW assesses Russian forces have operated in or launched attacks against but do not control.

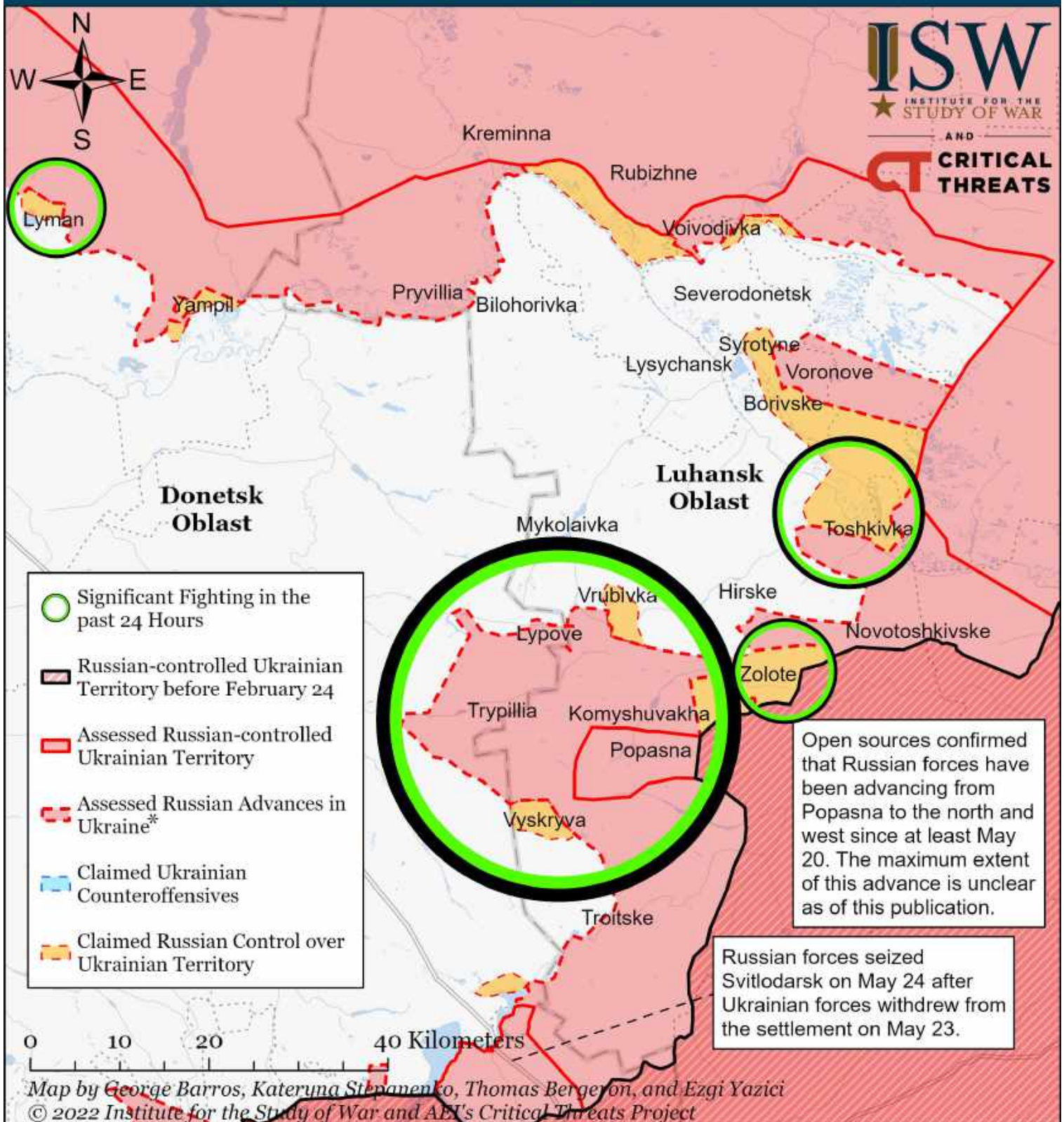
Note: Russian military bloggers and news outlets claimed that Russian forces captured Syrotne, Troitske, Trypillya, Volodymyrivka, Komyshevukha, Lypove, Vyskryva, and entered Vrubivka on May 20. We will adjust our maps to reflect control of terrain (as opposed to just claims) when we observe evidence of these Russian claims.

**Moldova Situational Map as of
May 21, 2022, 3:00 PM ET**



Note: Russia maintains two motorized rifle battalions (subordinate to the Russian Western Military District) and a command battalion in Transnistria in Tiraspol. Ukrainian intelligence claimed these forces are mostly in Cobasna guarding the ammunition depot there as of May 3.

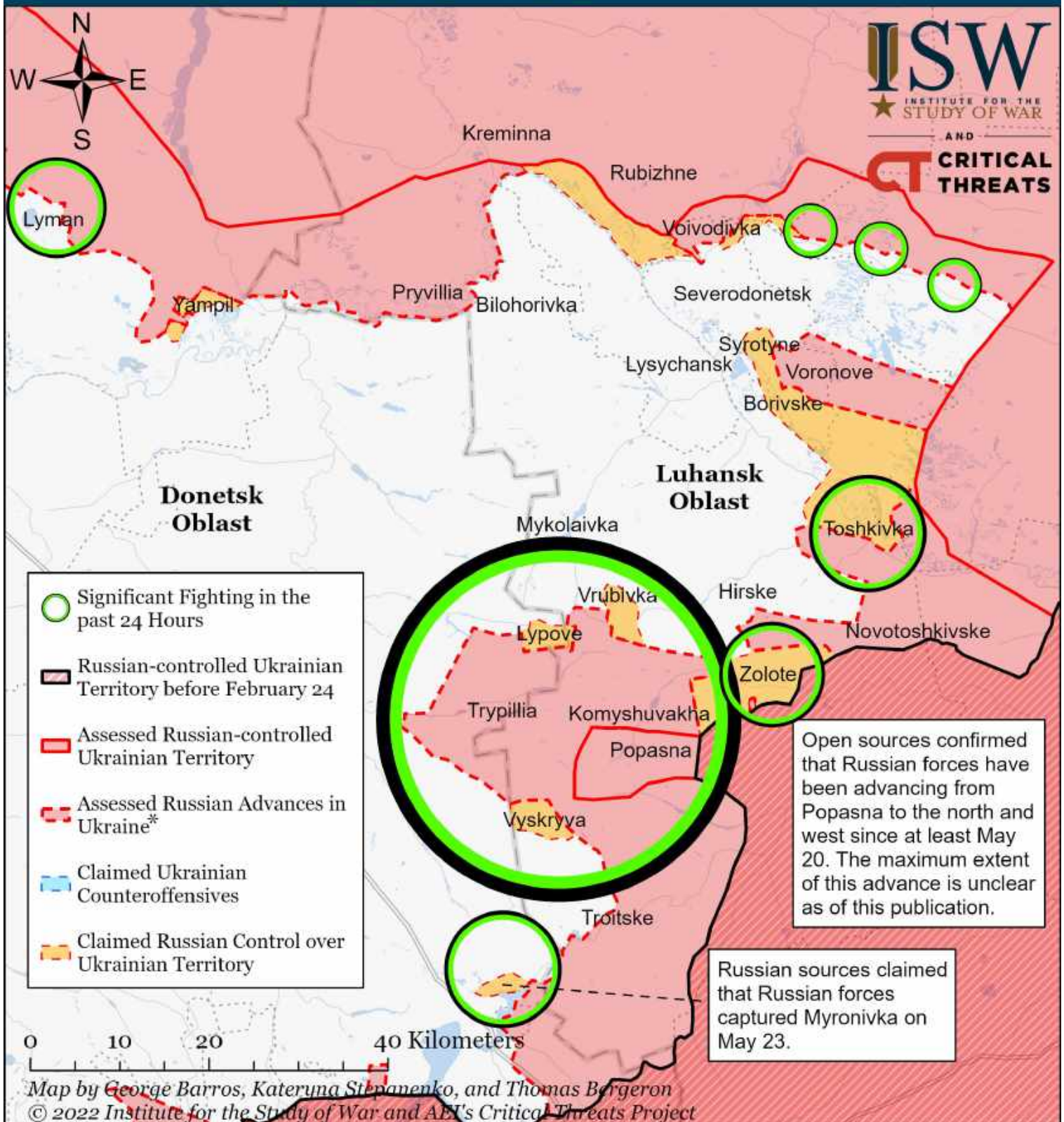
Assessed Control of Terrain Around Severodonetsk as of May 24, 2022, 3:00 PM ET



* Assessed Russian advances are areas where ISW assesses Russian forces have operated in or launched attacks against but do not control.

Note: Russian forces seized Svitlodarsk on May 24 after Ukrainian forces withdrew from the settlement on May 23. Russian forces captured Mironovsky near Svitlodarsk on May 23. We recoded Russian claims in Troitske given the capture of Mironovsky. Geolocated videos from May 24 confirmed that Russian forces reached Troitske.

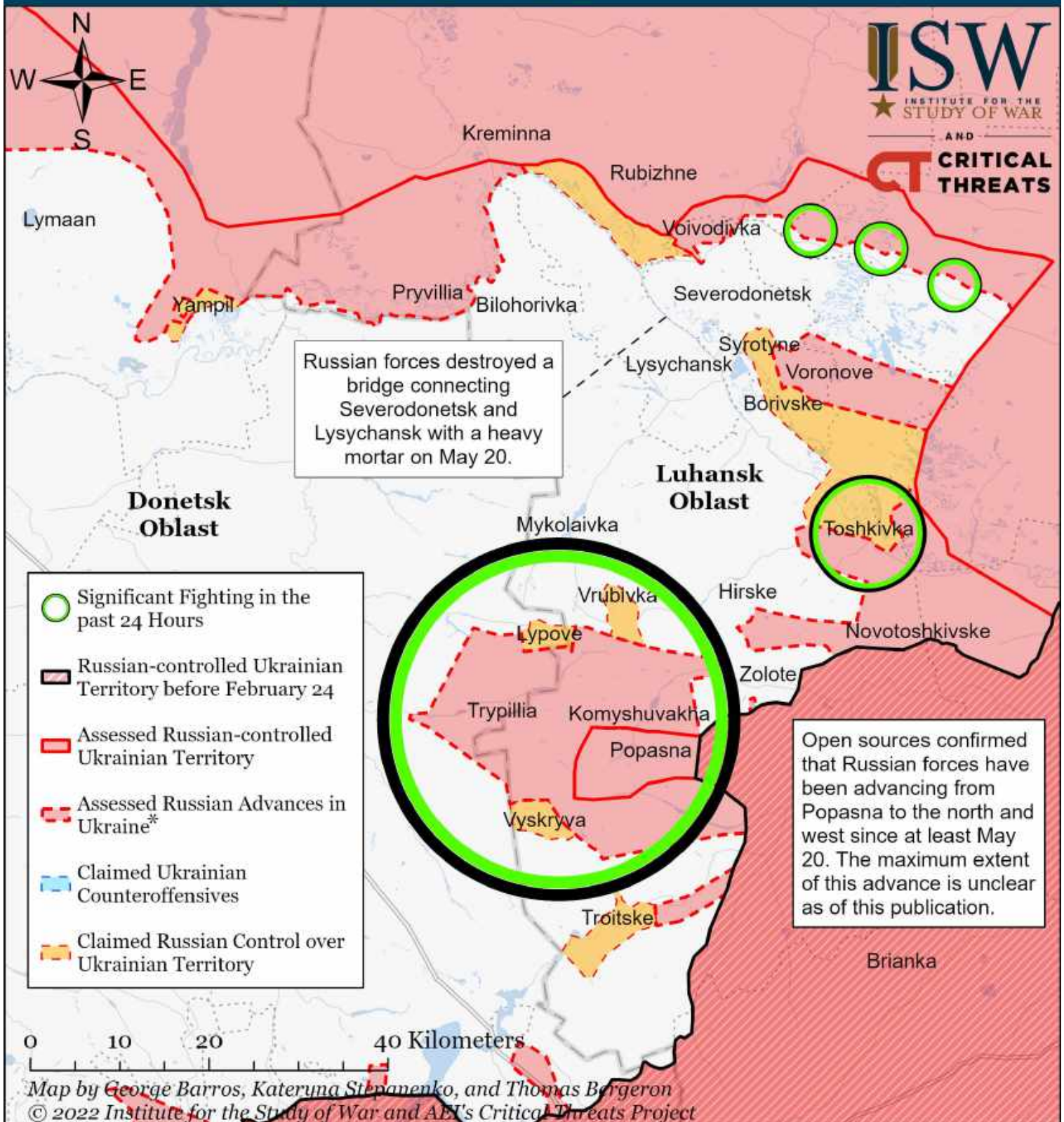
Assessed Control of Terrain Around Severodonetsk as of May 23, 2022, 3:00 PM ET



* Assessed Russian advances are areas where ISW assesses Russian forces have operated in or launched attacks against but do not control.

Note: Russian forces captured Mironovsky near Svitlodarsk on May 23. We recoded Russian claims in Troitske given the capture of Mironovsky. The confirmed capture of Mironovsky means that a Russian breakthrough from Troitske likely supported this advance. We coded Zolote, Luhansk Oblast, as Russian claims given Izvestia war journalist Denis Kulaga claimed that Russian forces control all of Zolote on May 23. Other pro-Russian bloggers claim that Russian forces have only taken control of the entrance of Zolote.

Assessed Control of Terrain Around Severodonetsk as of May 22, 2022, 3:00 PM ET



* Assessed Russian advances are areas where ISW assesses Russian forces have operated in or launched attacks against but do not control.

Note: We refined our frontlines in Severodonetsk on May 22 based on observing new information. We slightly recessed assessed Russian control given that the Ukrainian General Staff stated on May 22 that Ukrainian forces repelled Russian assaults against Oskolonivka, Oleksandrivka, Purdivka, Shchedryshcheve, and Smolyaninove, indicating that Ukrainian forces control these areas. We removed Russian claims behind these Ukrainian lines that are likely exaggerated. We will continue refining our maps as we observe and reconcile more data.

Assessed Control of Terrain Around Severodonetsk as of May 21, 2022, 3:00 PM ET

