

Assessed Control of Terrain in Ukraine and Main Russian Maneuver Axes as of May 28, 2022, 3:00 PM ET



Map by George Barros, Kateryna Stepanenko, and Thomas Bergeron
© 2022 Institute for the Study of War and AEI's Critical Threats Project

* Assessed Russian advances are areas where ISW assesses Russian forces have operated in or launched attacks against but do not control.

Assessed Control of Terrain in Ukraine and Main Russian Maneuver Axes as of May 27, 2022, 3:00 PM ET



Map by George Barros, Kateryna Stepanenko, and Thomas Bergeron
© 2022 Institute for the Study of War and AEI's Critical Threats Project

* Assessed Russian advances are areas where ISW assesses Russian forces have operated in or launched attacks against but do not control.

Assessed Control of Terrain in Ukraine and Main Russian Maneuver Axes as of May 26, 2022, 3:00 PM ET



Map by George Barros, Kateryna Stepanenko, and Thomas Bergeron
© 2022 Institute for the Study of War and AEI's Critical Threats Project

* Assessed Russian advances are areas where ISW assesses Russian forces have operated in or launched attacks against but do not control.

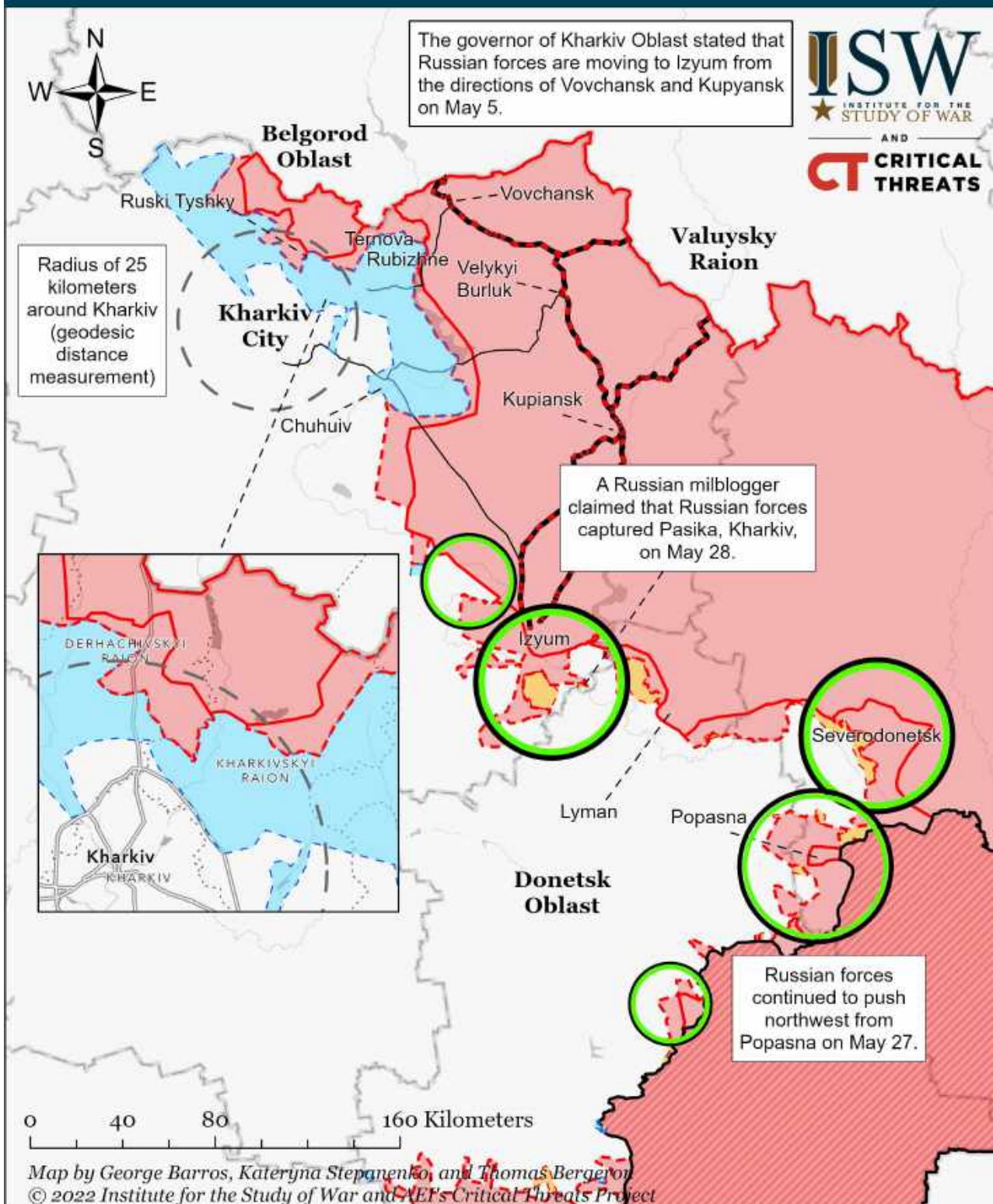
Assessed Control of Terrain in Ukraine and Main Russian Maneuver Axes as of May 25, 2022, 3:00 PM ET



Map by George Barros, Kateryna Stepanenko, and Thomas Bergeron
© 2022 Institute for the Study of War and AEI's Critical Threats Project

* Assessed Russian advances are areas where ISW assesses Russian forces have operated in or launched attacks against but do not control.

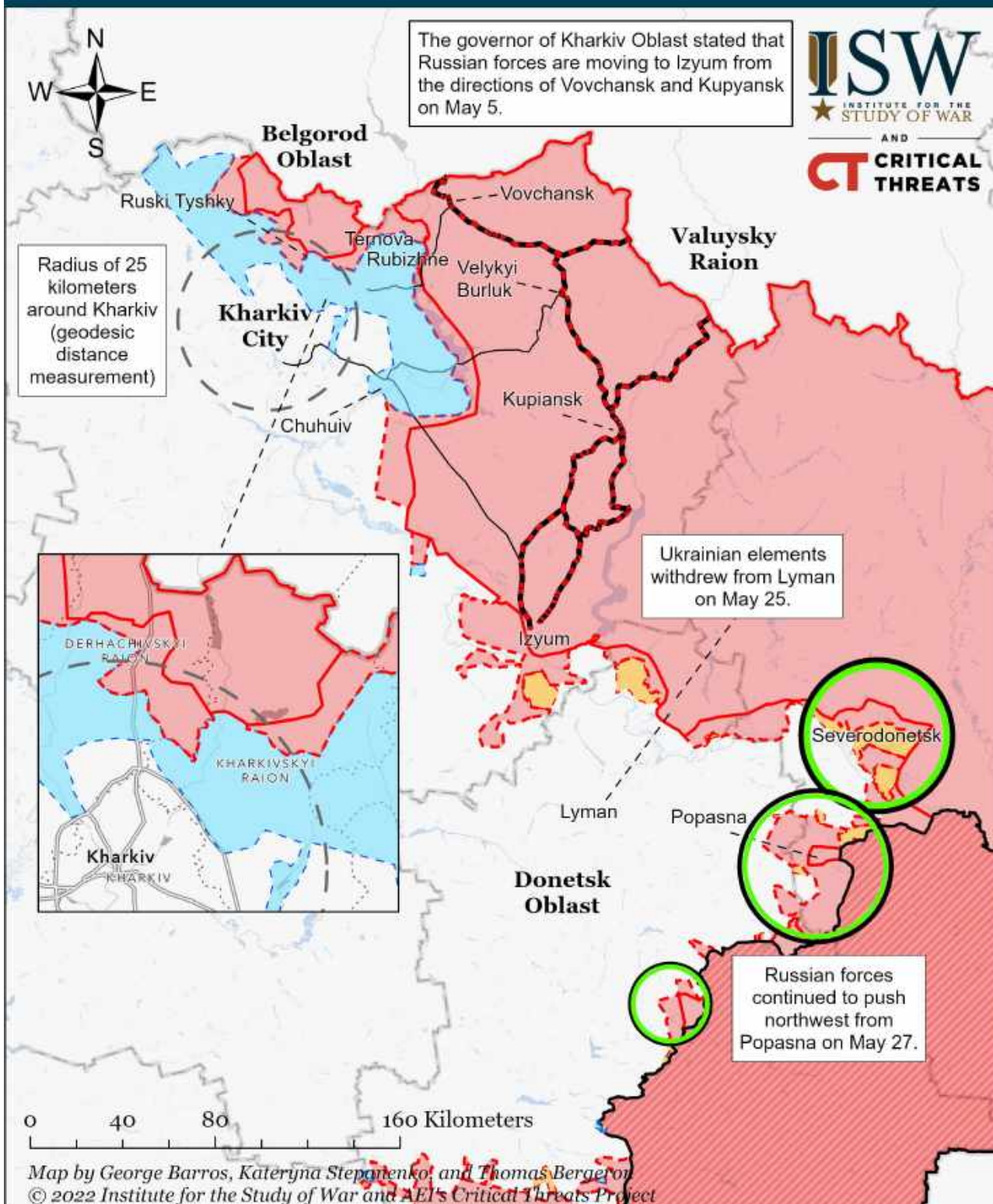
Assessed Control of Terrain Around Kharkiv as of May 28, 2022, 3:00 PM ET



- Significant Fighting in the past 24 Hours
- Key Ukrainian Roads
- Russian Ground Lines of Communication
- Russian-controlled Ukrainian Territory before February 24
- Assessed Russian Advances in Ukraine*
- Assessed Russian-controlled Ukrainian Territory
- Claimed Russian Control over Ukrainian Territory
- Claimed Ukrainian Counteroffensives

* Assessed Russian advances are areas where ISW assesses Russian forces have operated in or launched attacks against but do not control.

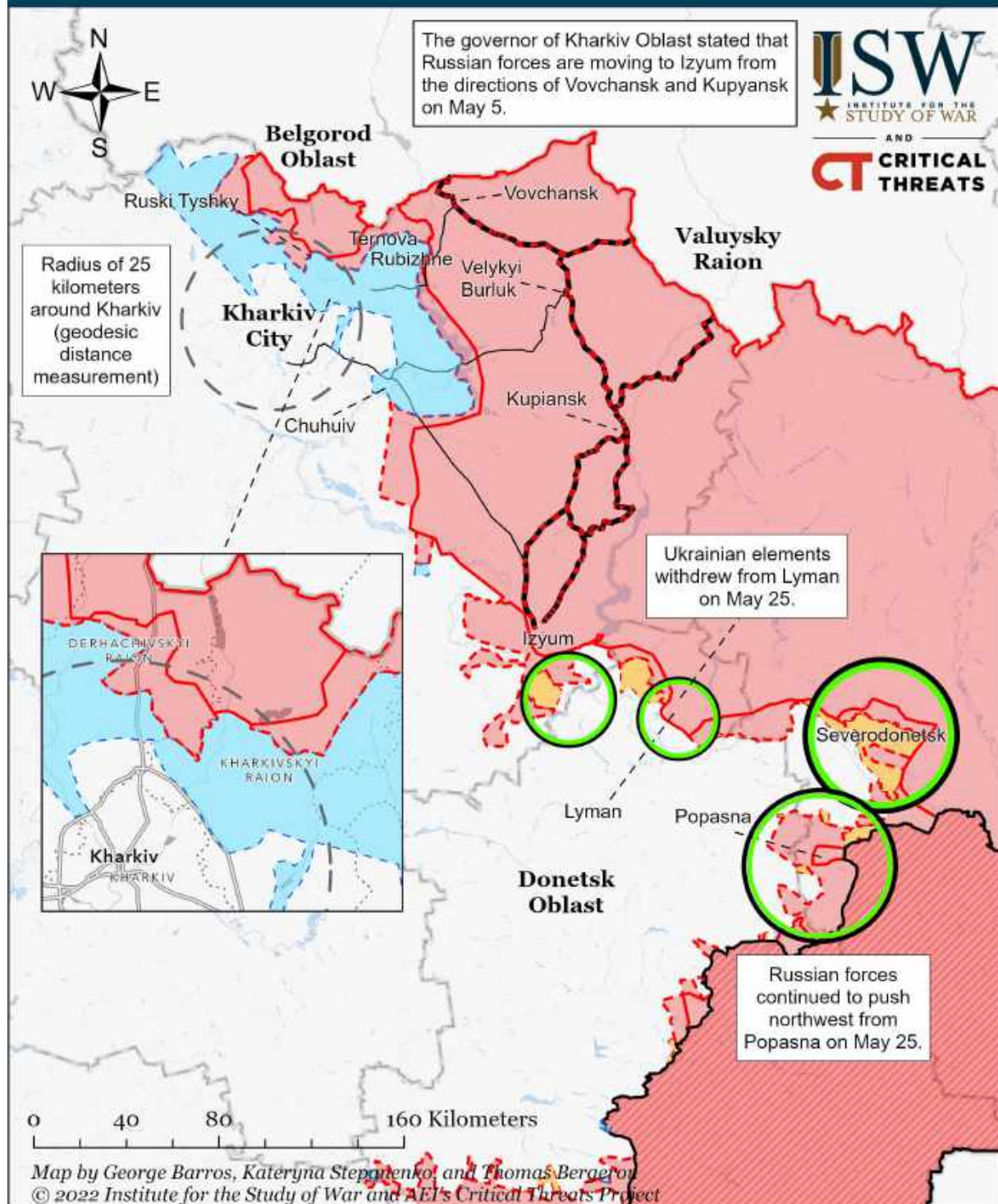
Assessed Control of Terrain Around Kharkiv as of May 27, 2022, 3:00 PM ET



- Significant Fighting in the past 24 Hours
- Key Ukrainian Roads
- Russian Ground Lines of Communication
- Russian-controlled Ukrainian Territory before February 24
- Assessed Russian Advances in Ukraine*
- Assessed Russian-controlled Ukrainian Territory
- Claimed Russian Control over Ukrainian Territory
- Claimed Ukrainian Counteroffensives

* Assessed Russian advances are areas where ISW assesses Russian forces have operated in or launched attacks against but do not control.

Assessed Control of Terrain Around Kharkiv as of May 26, 2022, 3:00 PM ET

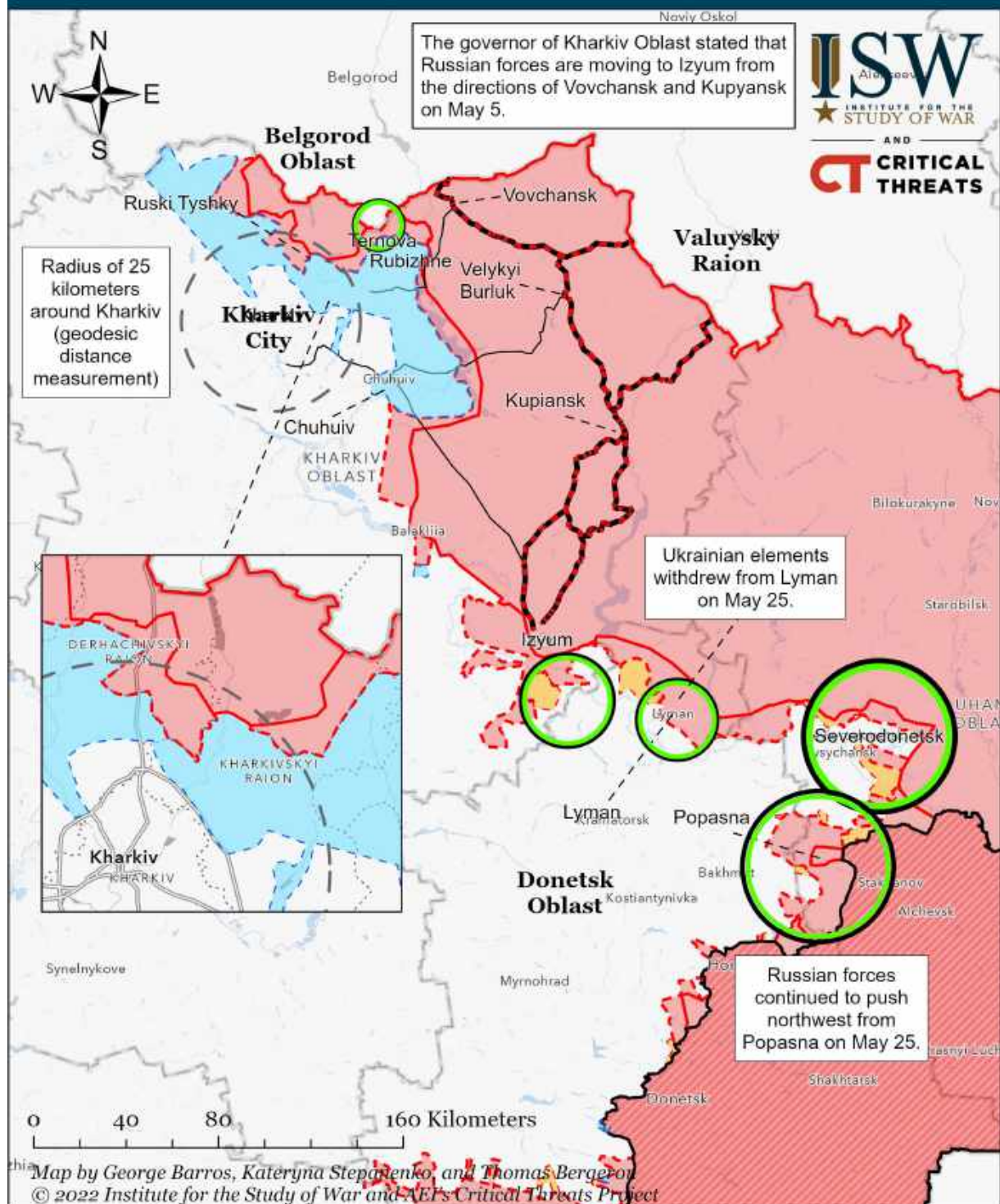


- Significant Fighting in the past 24 Hours
- Key Ukrainian Roads
- Russian Ground Lines of Communication
- ▬ Russian-controlled Ukrainian Territory before February 24
- ▬ Assessed Russian Advances in Ukraine*
- ▬ Assessed Russian-controlled Ukrainian Territory
- ▬ Claimed Russian Control over Ukrainian Territory
- ▬ Claimed Ukrainian Counteroffensives

* Assessed Russian advances are areas where ISW assesses Russian forces have operated in or launched attacks against but do not control.

Note: ISW is unable to verify Russian Telegram channel Swodki's May 26 claim that Russian forces gained control over the north and eastern part of Severodonetsk and that Ukrainian forces are operating in the city's southwest, with fighting is occurring in the city center. We have coded this new information as Russian claims until we observe more evidence to corroborate. Russian forces likely captured Lyman on May 25. The full extent of Russian advances in this area is unclear.

Assessed Control of Terrain Around Kharkiv as of May 25, 2022, 3:00 PM ET

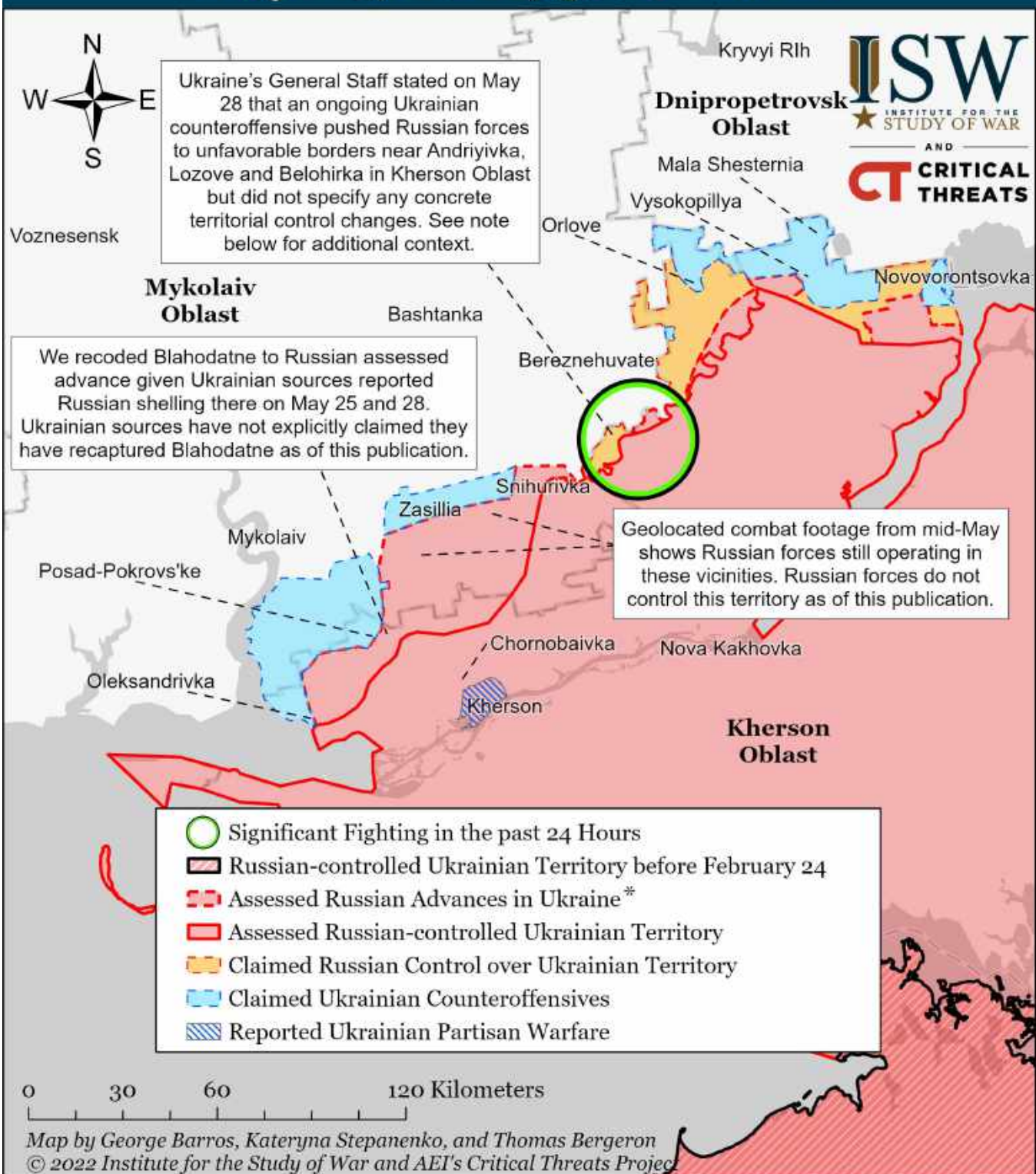


- Significant Fighting in the past 24 Hours
- Key Ukrainian Roads
- Russian Ground Lines of Communication
- Russian-controlled Ukrainian Territory before February 24
- Assessed Russian Advances in Ukraine*
- Assessed Russian-controlled Ukrainian Territory
- Claimed Russian Control over Ukrainian Territory
- Ukrainian Water Assets
- Claimed Ukrainian Counteroffensives

* Assessed Russian advances are areas where ISW assesses Russian forces have operated in or launched attacks against but do not control.

Note: Russian forces likely captured Lyman on May 25. The full extent of Russian advances in this area is unclear. The frontline situation in Purdivka, Oleksandrivka, and Smolianynove northeast of Severodonetsk is unclear. Head of the Luhansk Oblast State Administration Serhiy Haidai stated that the shelling of Severodonetsk has increased exponentially and that there is fighting on the outskirts of the city on May 25 without providing more specific information.

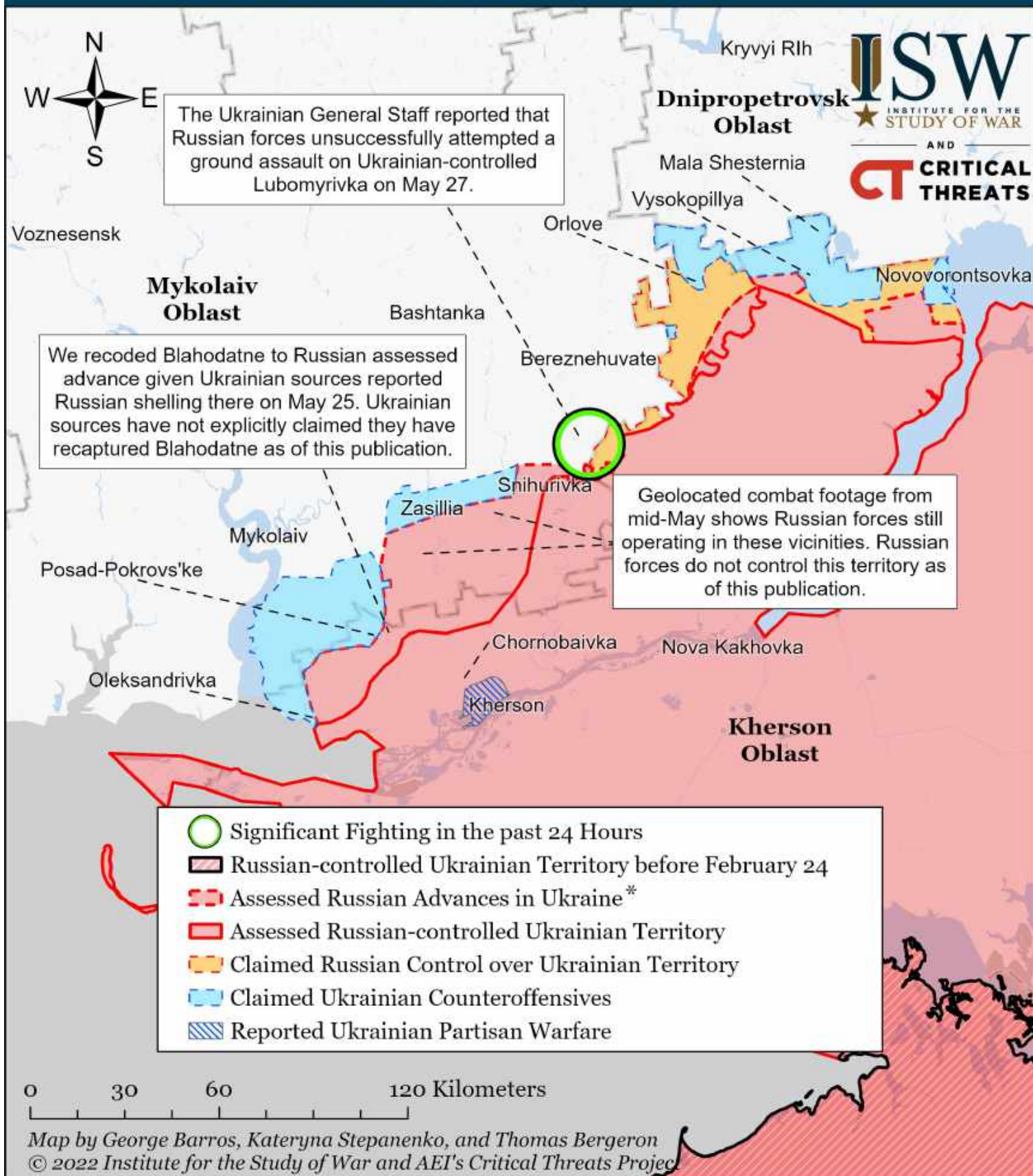
Assessed Control of Terrain Around Kherson and Mykolaiv as of May 28, 2022, 3:00 PM ET



* Assessed Russian advances are areas where ISW assesses Russian forces have operated in or launched attacks against but do not control.

Note: Ukraine's General Staff issued a vague statement on May 28 that an ongoing Ukrainian counteroffensive pushed Russian forces to unfavorable borders near Andriyivka, Lozove and Bilohirka in Kherson Oblast (approximately 70 km northeast of Kherson City). Ukrainian sources did not specify any specific territorial control changes to enable us to map this activity with high confidence. This report does not necessarily stipulate that Ukrainian forces took more territory; These three villages are all located on a 10-kilometer stretch on the immediate east bank of the Inhulets River on the Kherson-Mykolaiv oblast border. ISW had not assessed Russian forces to have recently been on the other side of the Inhulets River (which would be in Mykolaiv Oblast) at this position. The Ukrainian General Staff's report may support unconfirmed social media reports that Ukrainian forces crossed the Inhulets River in the vicinity of Davydiv Brid on May 27, but the General Staff statement is not specific enough to confirm those reports. We will update our map in this area when we collect enough information to update our map and assessment.

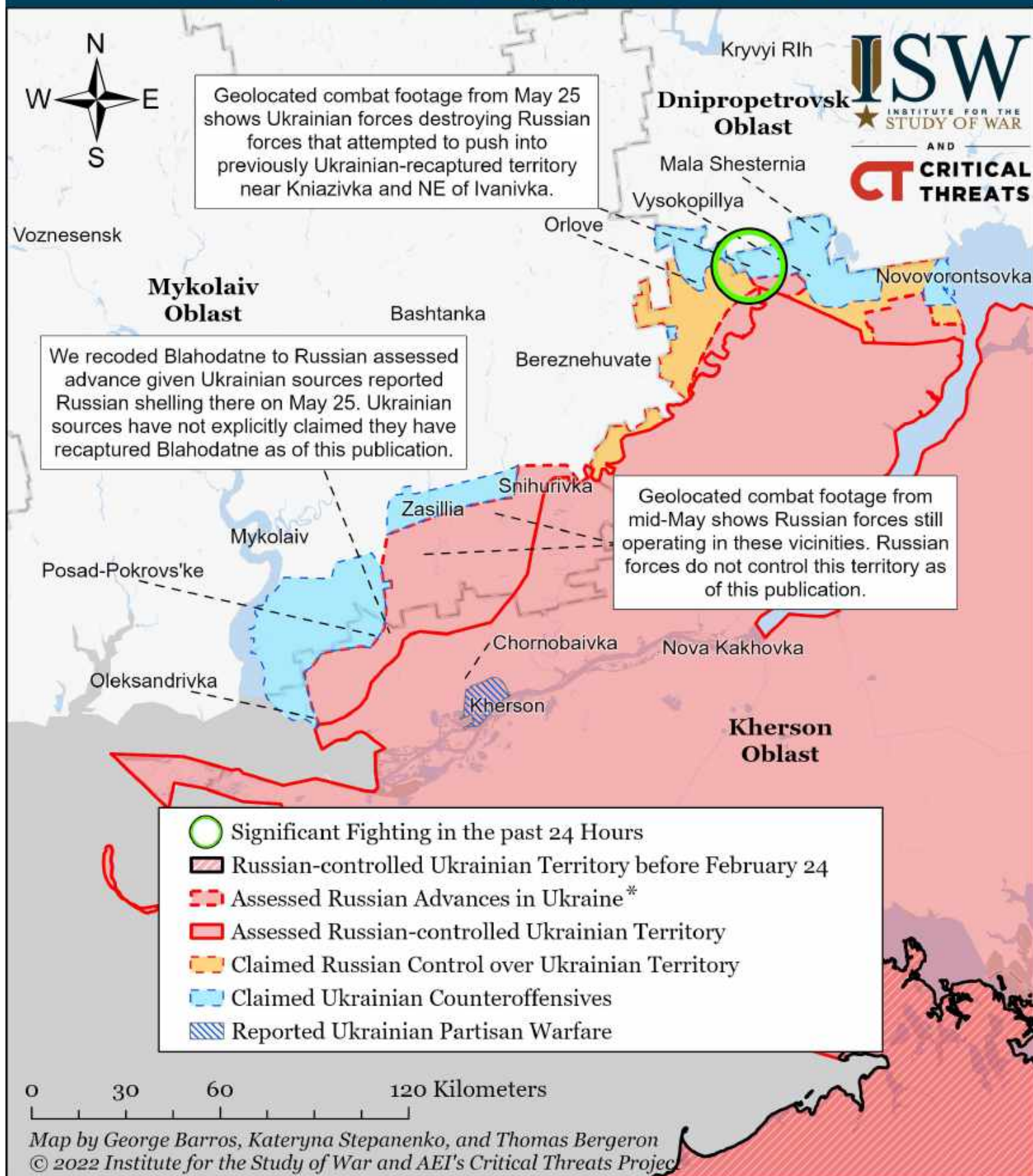
Assessed Control of Terrain Around Kherson and Mykolaiv as of May 27, 2022, 3:00 PM ET



* Assessed Russian advances are areas where ISW assesses Russian forces have operated in or launched attacks against but do not control.

Note: We recoded Novopavlivka in northern Kherson Oblast to Ukrainian counteroffensives given the Ukrainian General Staff stated on May 25 that Russian forces fired upon Novopavlivka, indicating that Russian forces are not present there.

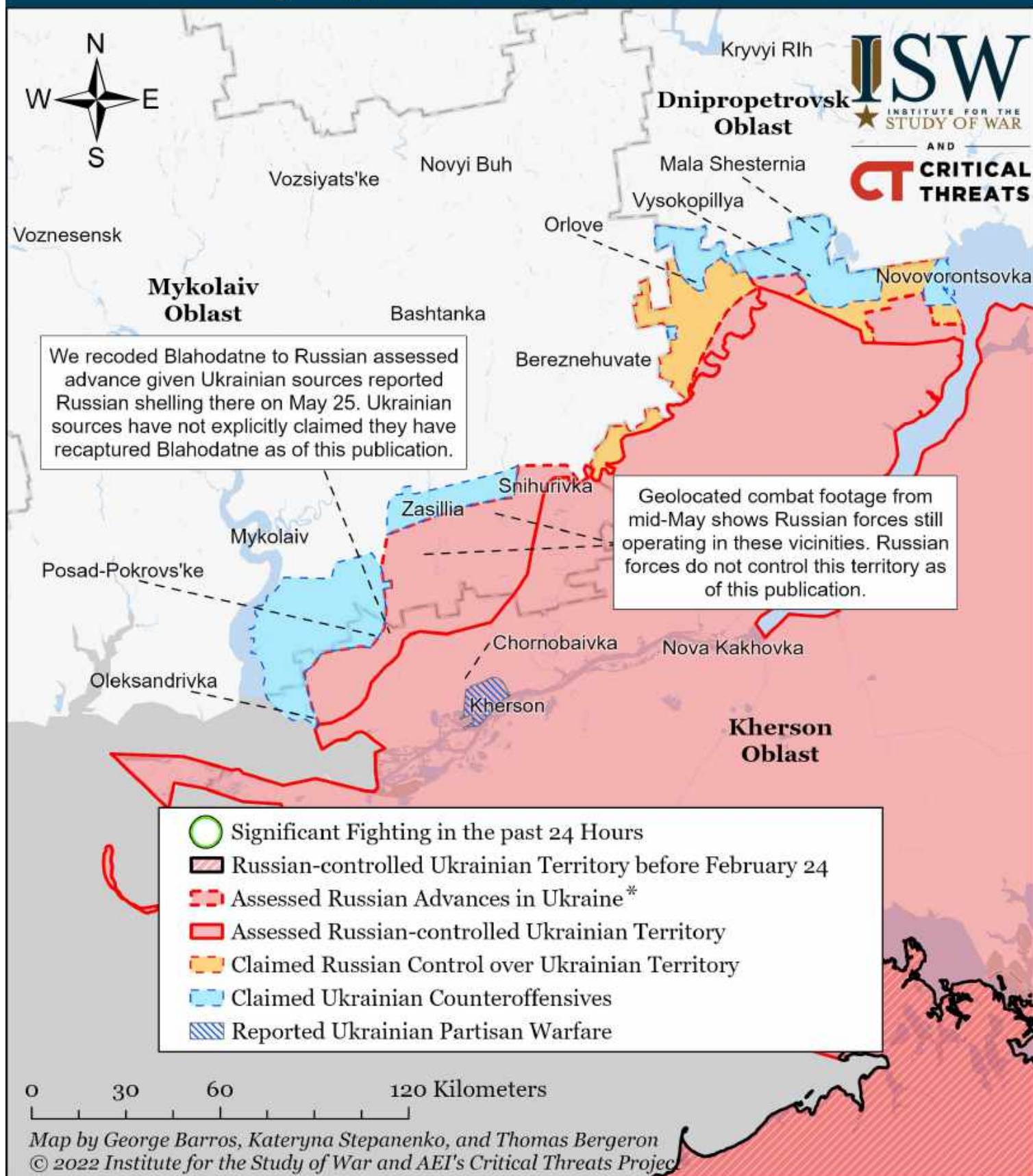
Assessed Control of Terrain Around Kherson and Mykolaiv as of May 26, 2022, 3:00 PM ET



* Assessed Russian advances are areas where ISW assesses Russian forces have operated in or launched attacks against but do not control.

Note: We recoded Novopavlivka in northern Kherson Oblast to Ukrainian counteroffensives given the Ukrainian General Staff stated on May 25 that Russian forces fired upon Novopavlivka, indicating that Russian forces are not present there.

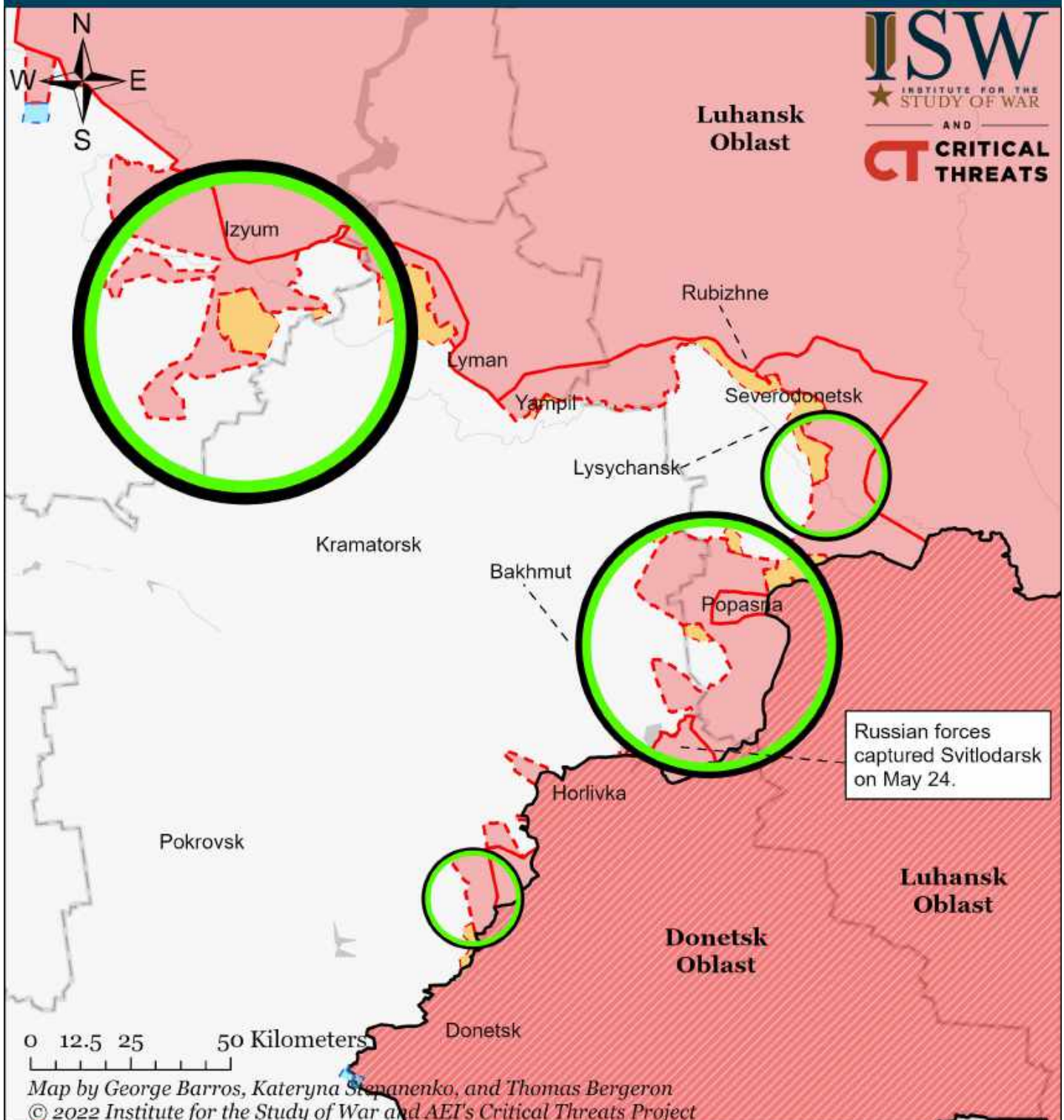
Assessed Control of Terrain Around Kherson and Mykolaiv as of May 25, 2022, 3:00 PM ET



* Assessed Russian advances are areas where ISW assesses Russian forces have operated in or launched attacks against but do not control.

Note: We recoded Novopavlivka in northern Kherson Oblast to Ukrainian counteroffensives given the Ukrainian General Staff Stated on May 25 that Russian forces fired upon Novopavlivka, indicating that Russian forces are not present there.

Assessed Control of Terrain Around Luhansk as of May 28, 2022, 3:00 PM ET

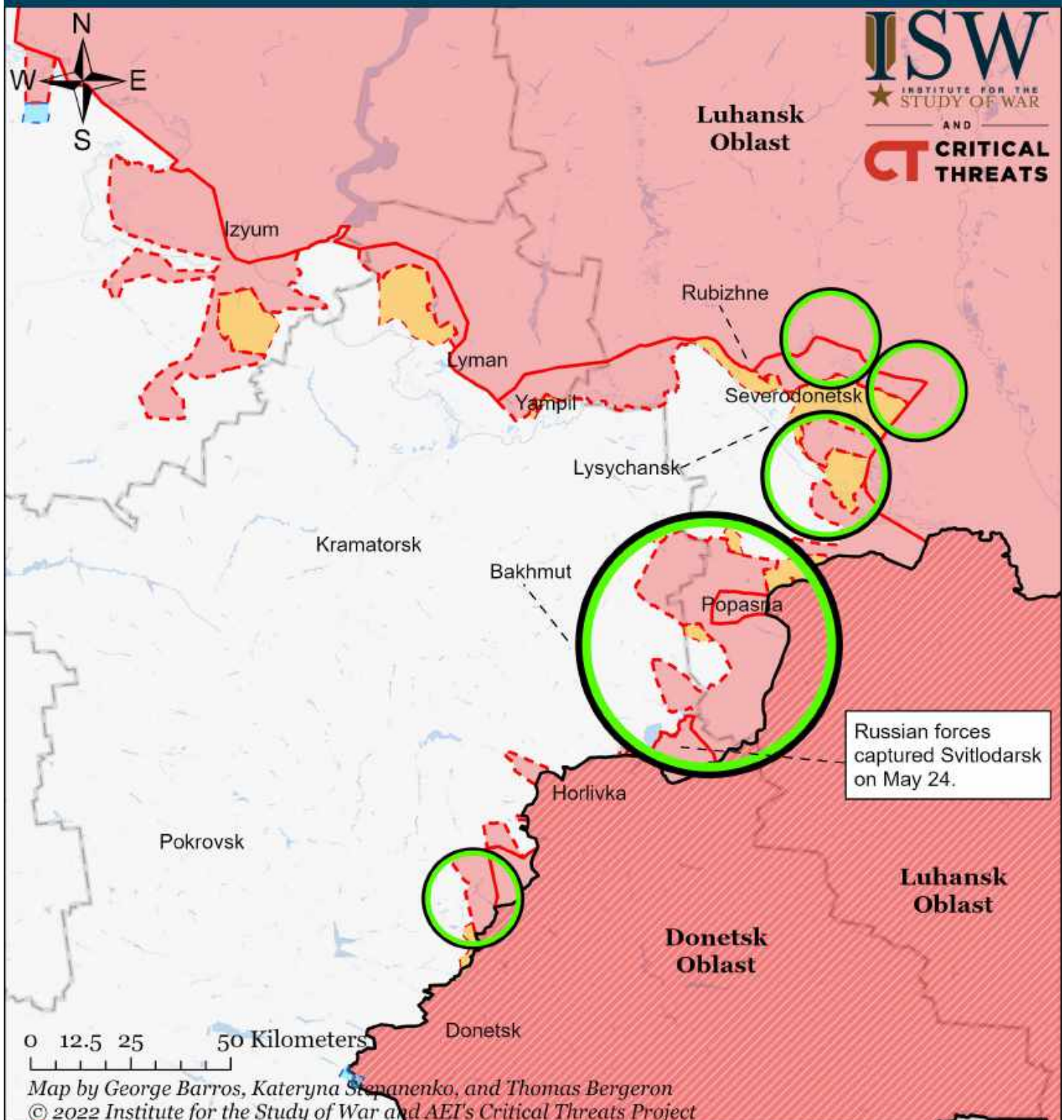


- Significant Fighting in the past 24 Hours
- Assessed Russian Advances in Ukraine*
- Claimed Russian Control over Ukrainian Territory
- Russian-controlled Ukrainian Territory before February 24
- Assessed Russian-controlled Ukrainian Territory
- Claimed Ukrainian Counteroffensives

* Assessed Russian advances are areas where ISW assesses Russian forces have operated in or launched attacks against but do not control.

Note: ISW expanded Russian assessed advances over the northern outskirts of Severodonetsk based on geolocated videos of Russian forces conducting ground assaults in the area on May 27.

Assessed Control of Terrain Around Luhansk as of May 27, 2022, 3:00 PM ET

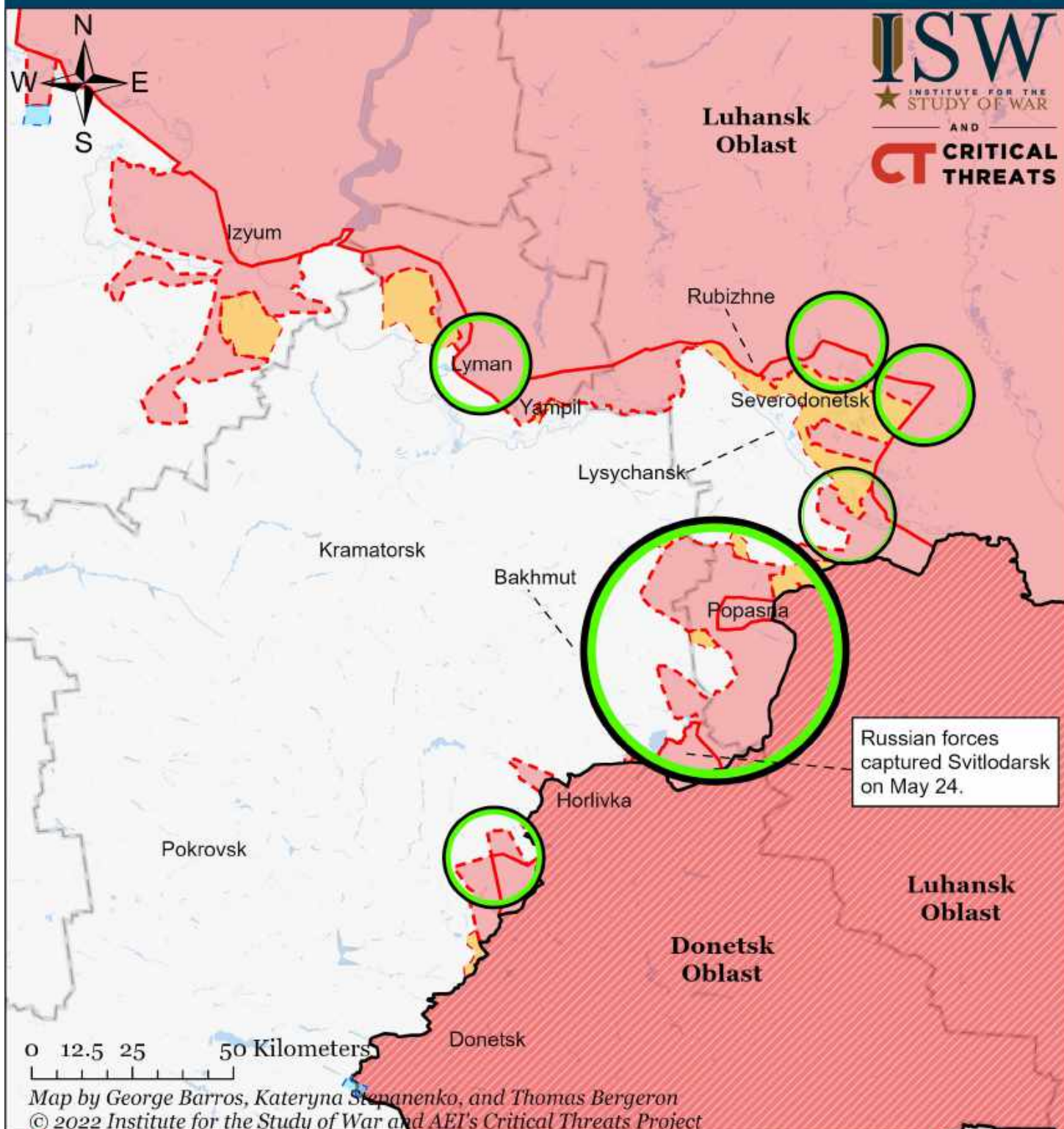


- Significant Fighting in the past 24 Hours
- Assessed Russian Advances in Ukraine*
- Claimed Russian Control over Ukrainian Territory
- Russian-controlled Ukrainian Territory before February 24
- Assessed Russian-controlled Ukrainian Territory
- Claimed Ukrainian Counteroffensives

* Assessed Russian advances are areas where ISW assesses Russian forces have operated in or launched attacks against but do not control.

Note: ISW expanded Russian assessed advances over the northern outskirts of Severodonetsk based on geolocated videos of Russian forces conducting ground assaults in the area on May 27.

Assessed Control of Terrain Around Luhansk as of May 26, 2022, 3:00 PM ET

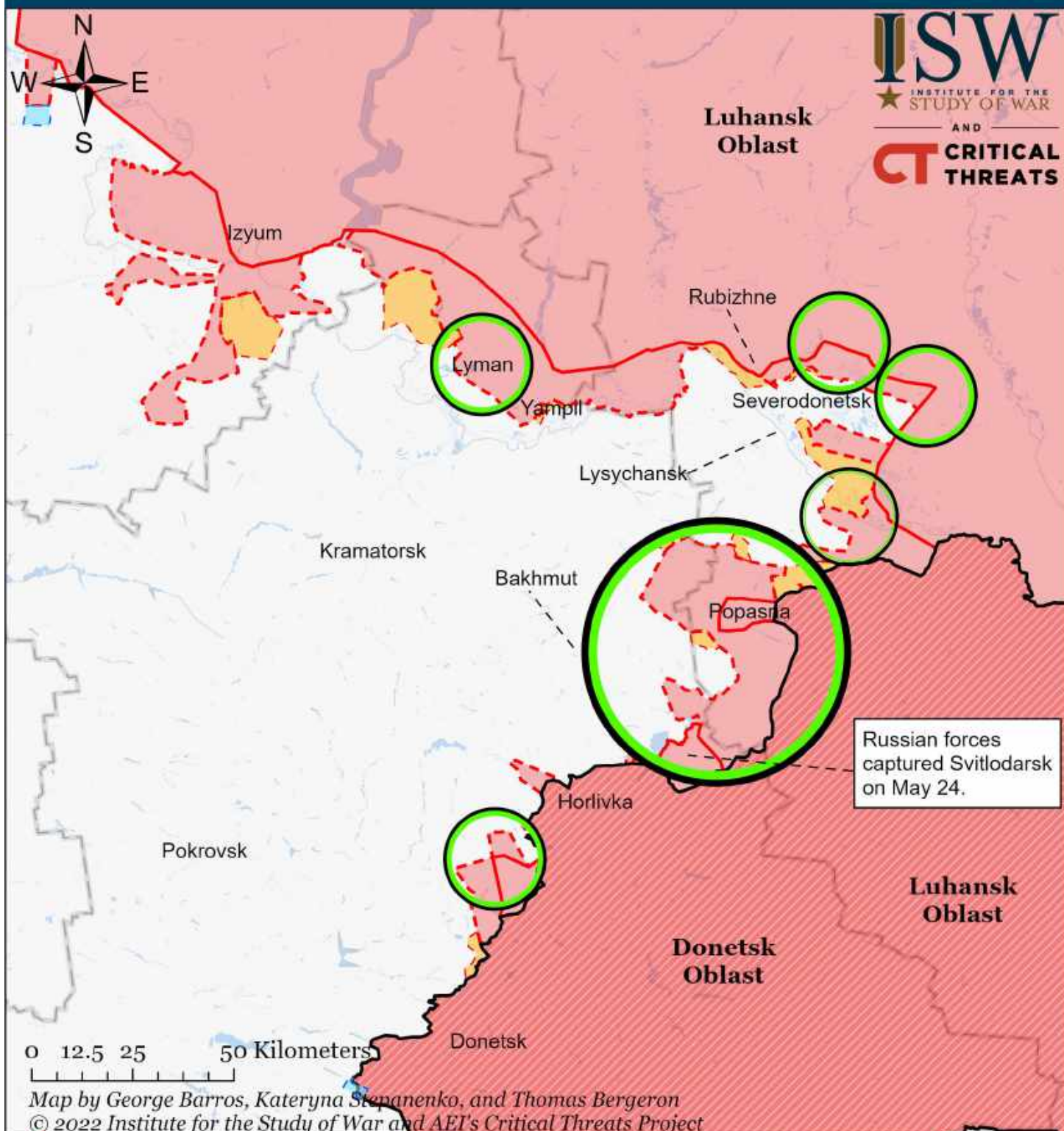


- Significant Fighting in the past 24 Hours
- ▬ Assessed Russian Advances in Ukraine*
- Claimed Russian Control over Ukrainian Territory
- Russian-controlled Ukrainian Territory before February 24
- Assessed Russian-controlled Ukrainian Territory
- Claimed Ukrainian Counteroffensives

* Assessed Russian advances are areas where ISW assesses Russian forces have operated in or launched attacks against but do not control.

Note: Russian forces captured Lyman on May 25. The full extent of Russian advances in this area is unclear.

Assessed Control of Terrain Around Luhansk as of May 25, 2022, 3:00 PM ET

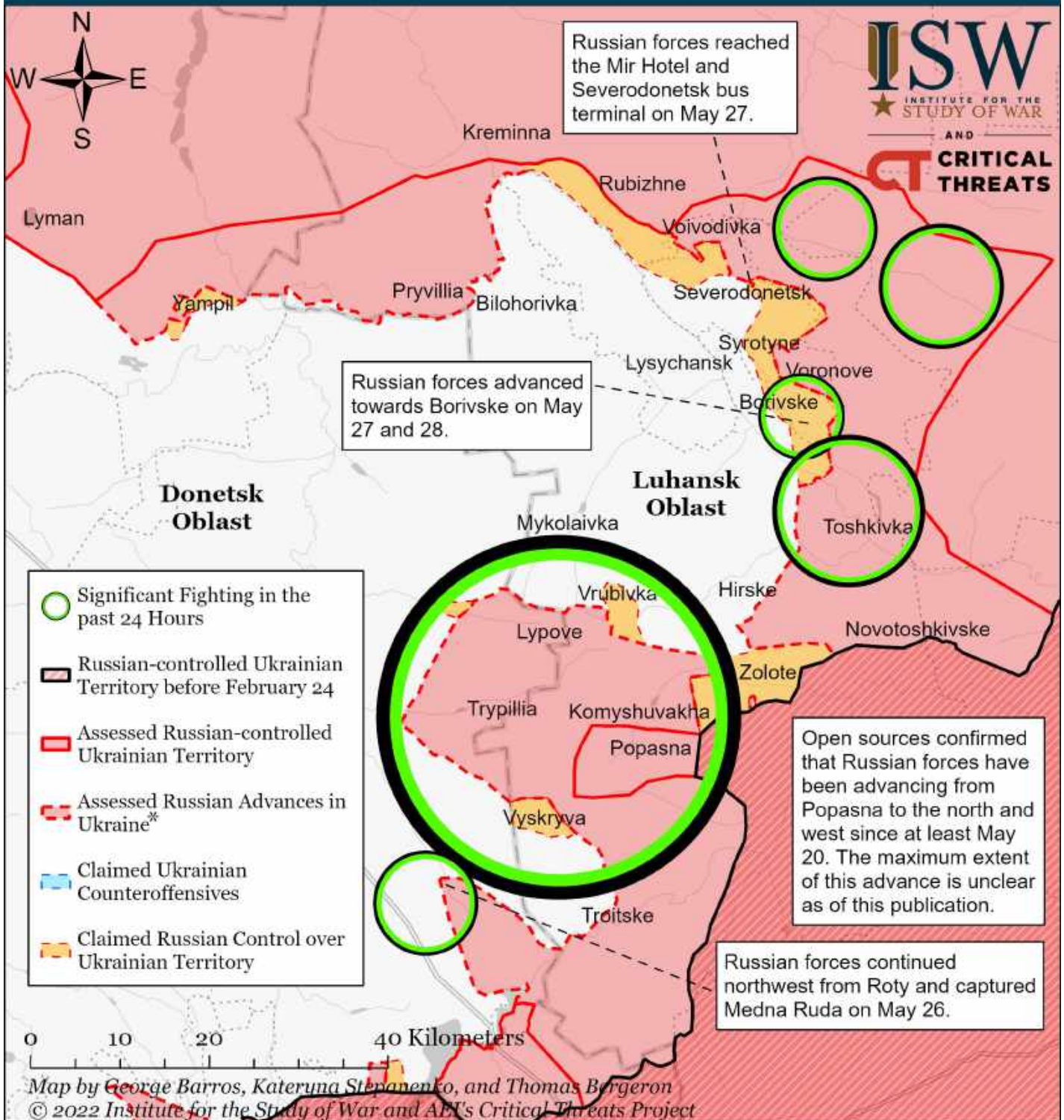


- Significant Fighting in the past 24 Hours
- Assessed Russian Advances in Ukraine*
- Claimed Russian Control over Ukrainian Territory
- Russian-controlled Ukrainian Territory before February 24
- Assessed Russian-controlled Ukrainian Territory
- Claimed Ukrainian Counteroffensives

* Assessed Russian advances are areas where ISW assesses Russian forces have operated in or launched attacks against but do not control.

Note: Russian forces likely captured Lyman on May 25. The full extent of Russian advances in this area is unclear.

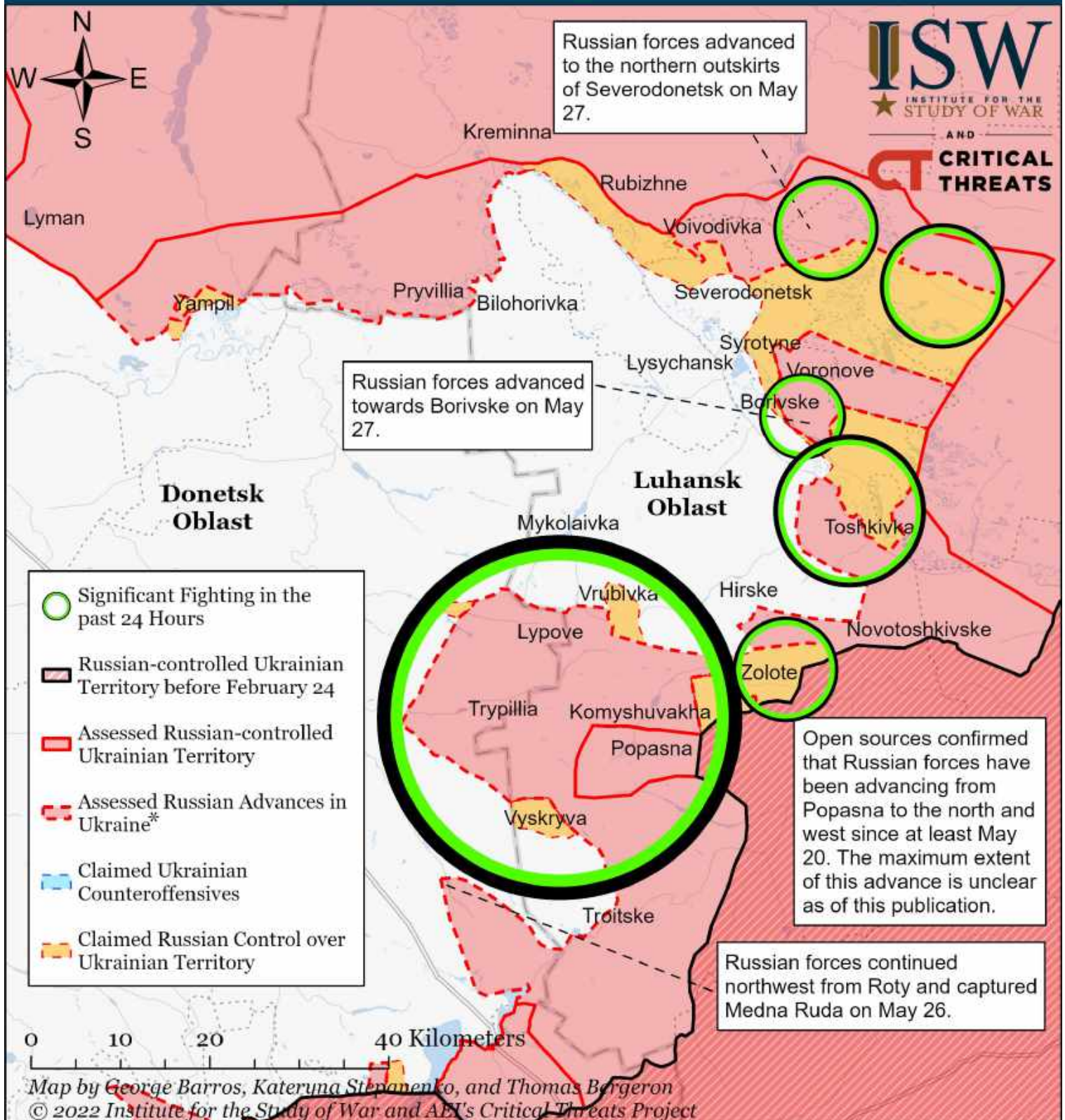
Assessed Control of Terrain Around Severodonetsk as of May 28, 2022, 3:00 PM ET



* Assessed Russian advances are areas where ISW assesses Russian forces have operated in or launched attacks against but do not control.

Note: We reshaped our assessment of the Severodonetsk eastern frontline after observing new information on May 28. We expanded Russian assessed advances from the east to Osklonivka given that Luhansk Governor Serhiy Haidai stated on May 28 that Russian forces retreated in the area of Osklonivka. The Ukrainian General Staff Report of 1800 May 28 stated that Russian forces conducted assaults against Borivske, indicating that Russian forces were likely west of Osklonivka. We also expanded assessed Russian advances from the north from Oleksandrivka and Smolianynove. We have not observed direct evidence for Russian forces overrunning Ukrainian positions in Oleksandrivka nor Smolianynove, but an advance from this direction would make sense given the reported fighting near Metolkine, which was unlikely to have been from an unsupported salient from Voronove. We will update our map when we collect more information.

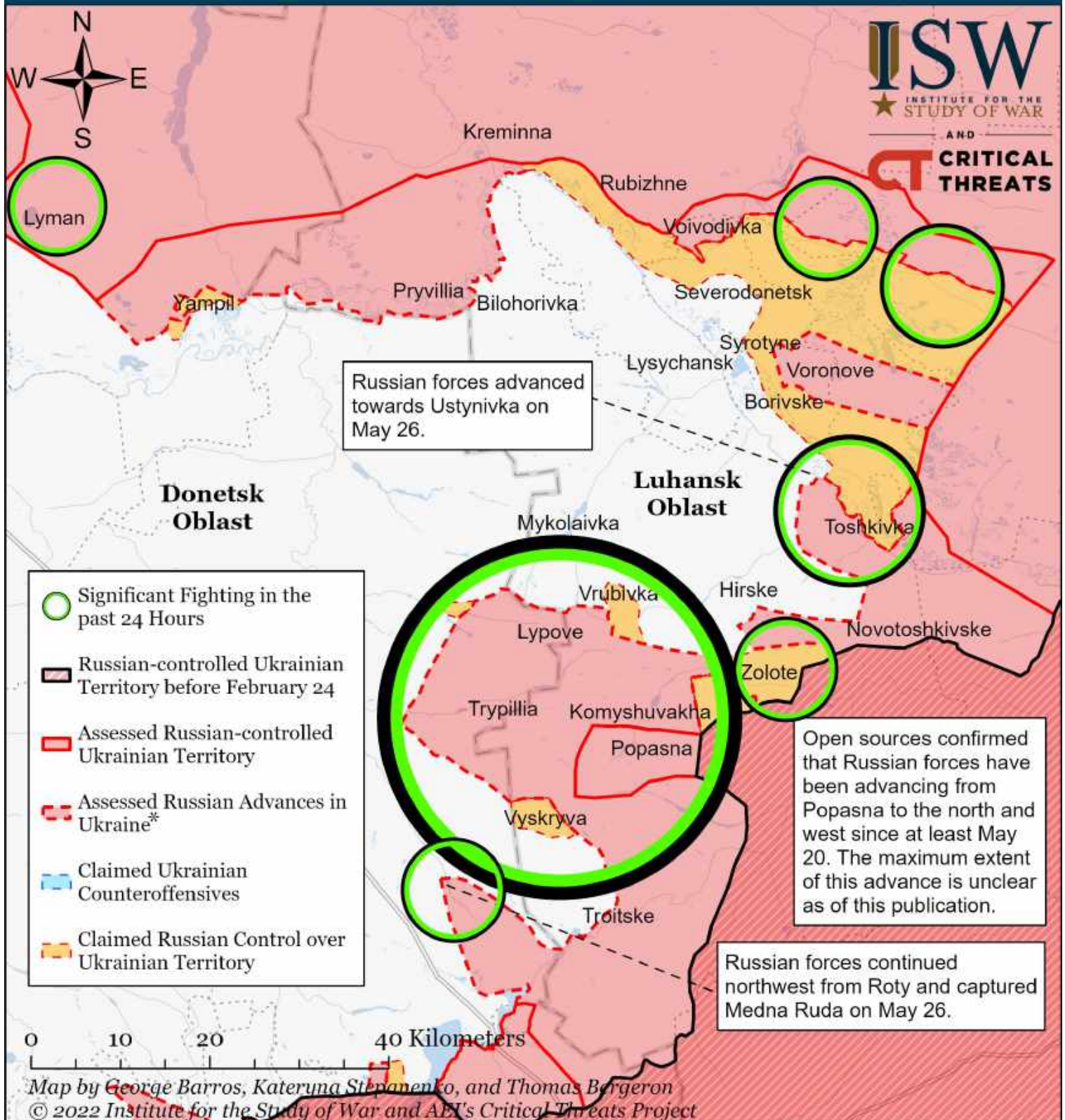
Assessed Control of Terrain Around Severodonetsk as of May 27, 2022, 3:00 PM ET



* Assessed Russian advances are areas where ISW assesses Russian forces have operated in or launched attacks against but do not control.

Note: ISW expanded Russian assessed advances over the northern outskirts of Severodonetsk based on geolocated videos of Russian forces conducting ground assaults in the area on May 27.

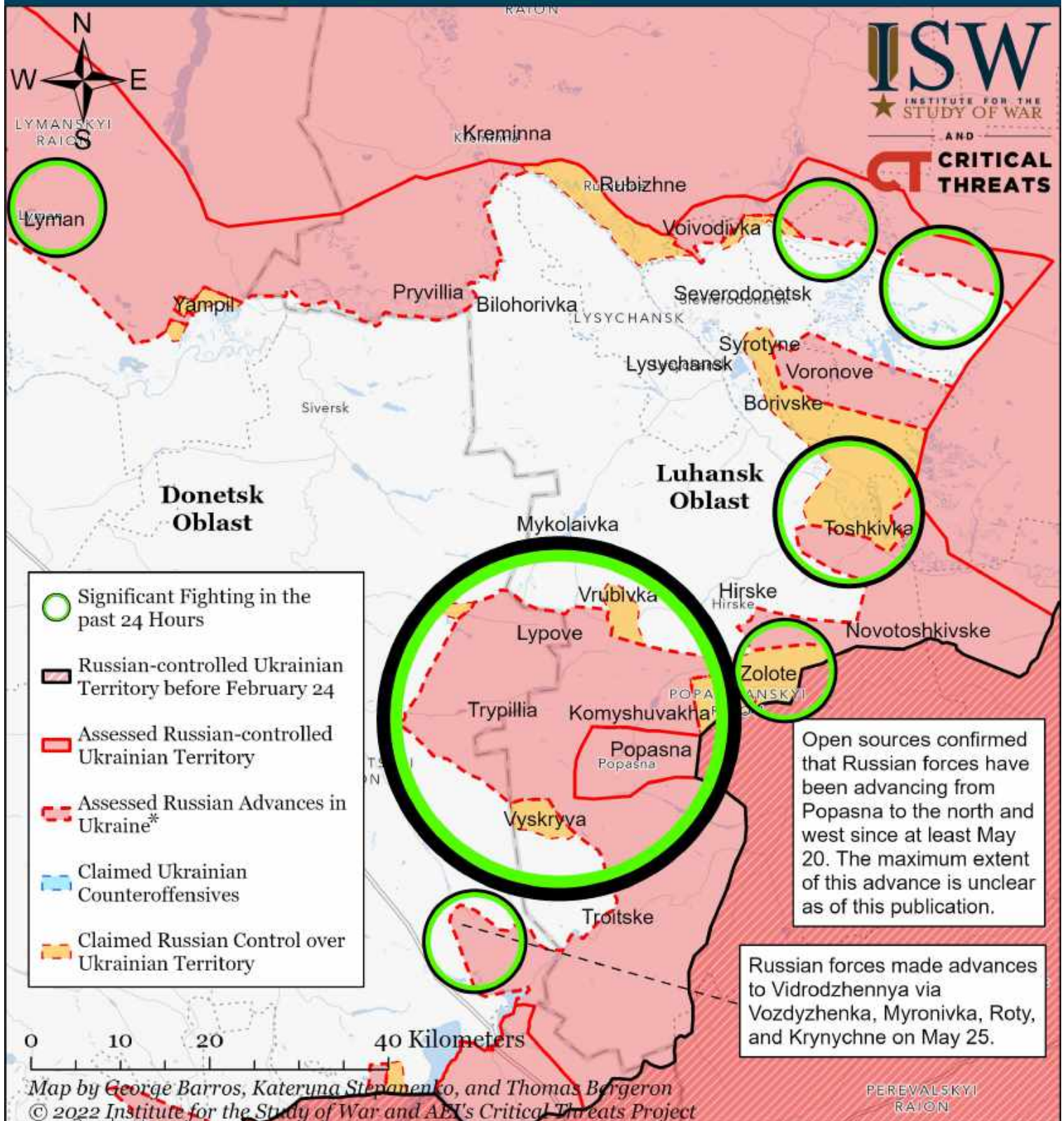
Assessed Control of Terrain Around Severodonetsk as of May 26, 2022, 3:00 PM ET



* Assessed Russian advances are areas where ISW assesses Russian forces have operated in or launched attacks against but do not control.

Note: ISW is unable to verify Russian Telegram channel Swodki's May 26 claim that Russian forces gained control over the north and eastern part of Severodonetsk and that Ukrainian forces are operating in the city's southwest, with fighting is occurring in the city center. We have coded this new information as Russian claims until we observe more evidence to corroborate. Russian forces captured Lyman on May 25. The full extent of Russian advances in this area is unclear.

Assessed Control of Terrain Around Severodonetsk as of May 25, 2022, 3:00 PM ET



* Assessed Russian advances are areas where ISW assesses Russian forces have operated in or launched attacks against but do not control.

Note: Russian forces likely captured Lyman on May 25. The full extent of Russian advances in this area is unclear. The frontline situation in Purdivka, Oleksandrivka, and Smolianynove northeast of Severodonetsk is unclear. Head of the Luhansk Oblast State Administration Serhiy Haidai stated that the shelling of Severodonetsk has increased exponentially and that there is fighting on the outskirts of the city on May 25 without providing more specific information.