

# Assessed Control of Terrain in Ukraine and Main Russian Maneuver Axes as of June 27, 2022, 3:00 PM ET



Map by George Barros, Kateryna Stepanenko, Noel Mikkelsen, and Daniel Mealie  
© 2022 Institute for the Study of War and AEI's Critical Threats Project

\* Assessed Russian advances are areas where ISW assesses Russian forces have operated in or launched attacks against but do not control.

# Assessed Control of Terrain in Ukraine and Main Russian Maneuver Axes as of June 26, 2022, 3:00 PM ET



Map by George Barros, Kateryna Stepanenko, Noel Mikkelsen, and Daniel Mealie  
© 2022 Institute for the Study of War and AEI's Critical Threats Project

\* Assessed Russian advances are areas where ISW assesses Russian forces have operated in or launched attacks against but do not control.



# Assessed Control of Terrain in Ukraine and Main Russian Maneuver Axes as of June 25, 2022, 3:00 PM ET



Map by George Barros, Kateryna Stepanenko, Noel Mikkelsen, and Daniel Mealie  
© 2022 Institute for the Study of War and AEI's Critical Threats Project

\* Assessed Russian advances are areas where ISW assesses Russian forces have operated in or launched attacks against but do not control.

# Assessed Control of Terrain in Ukraine and Main Russian Maneuver Axes as of June 24, 2022, 3:00 PM ET



Map by George Barros, Kateryna Stepanenko, Noel Mikkelsen, and Daniel Mealie  
© 2022 Institute for the Study of War and AEI's Critical Threats Project

\* Assessed Russian advances are areas where ISW assesses Russian forces have operated in or launched attacks against but do not control.



# Assessed Control of Terrain in Ukraine and Main Russian Maneuver Axes as of June 23, 2022, 3:00 PM ET

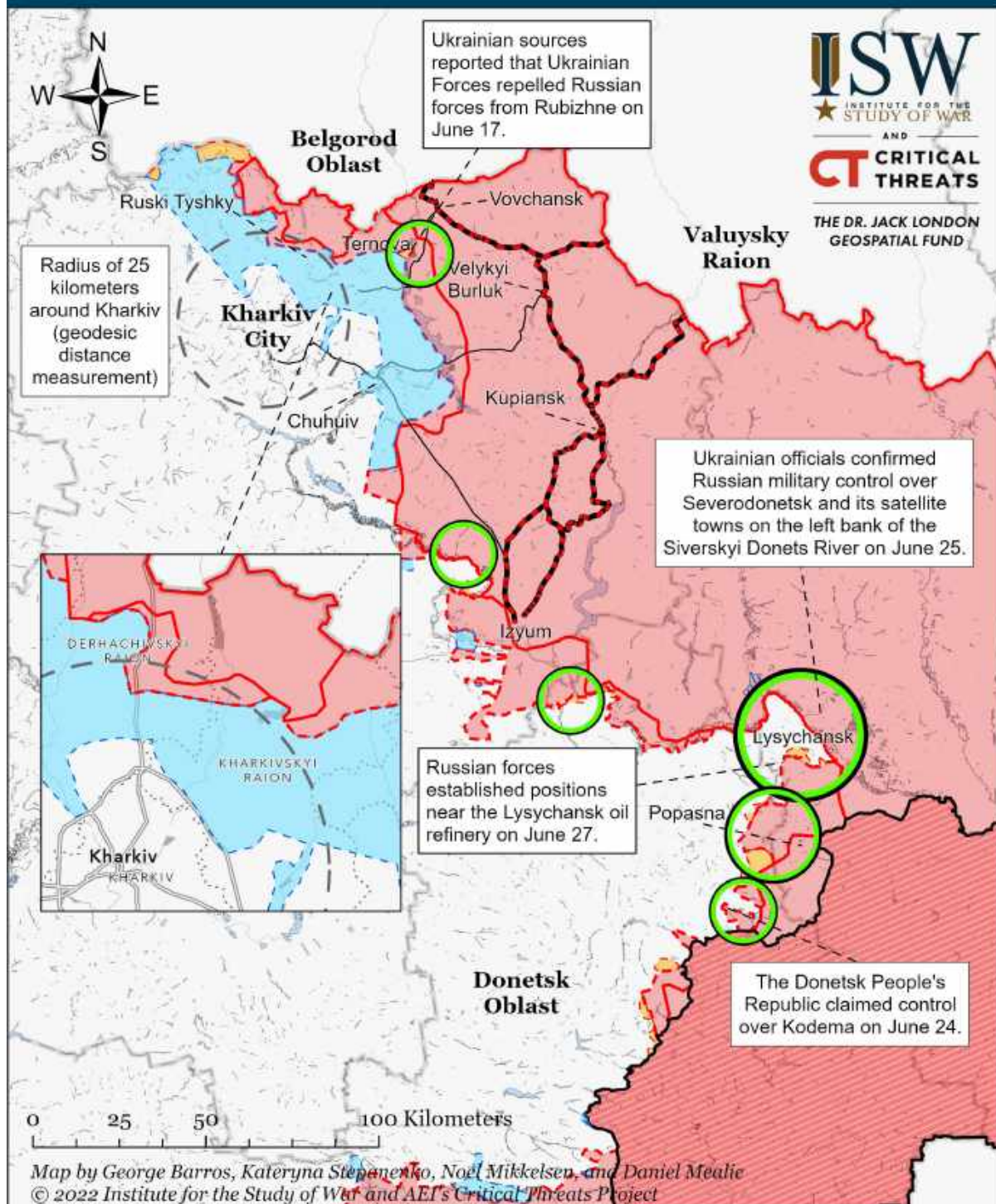


Map by George Barros, Kateryna Stepanenko, Noel Mikkelsen, and Daniel Mealie  
© 2022 Institute for the Study of War and AEI's Critical Threats Project

\* Assessed Russian advances are areas where ISW assesses Russian forces have operated in or launched attacks against but do not control.



# Assessed Control of Terrain Around Kharkiv as of June 27, 2022, 3:00 PM ET



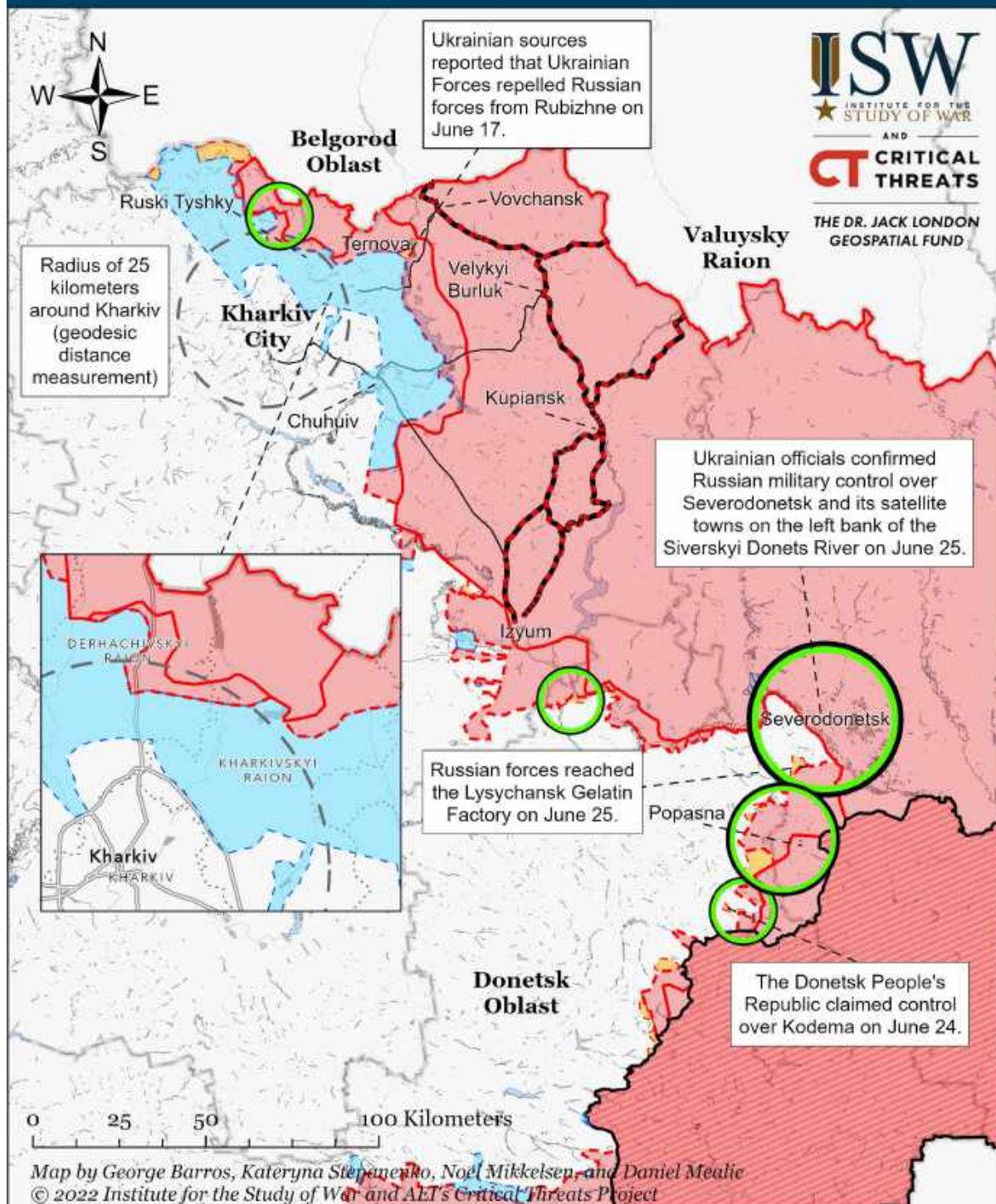
Significant Fighting in the past 24 Hours	Russian-controlled Ukrainian Territory before February 24	Claimed Russian Control over Ukrainian Territory
Key Ukrainian Roads	Assessed Russian Advances in Ukraine*	Claimed Ukrainian Counteroffensives
Russian Ground Lines of Communication	Assessed Russian-controlled Ukrainian Territory	Reported Ukrainian Partisan Warfare

\* Assessed Russian advances are areas where ISW assesses Russian forces have operated in or launched attacks against but do not control.

Note: Ukrainian Deputy Defense Minister Hanna Malyar stated on June 20 that Ukrainian forces have nearly reached the Ukrainian-Russian border. ISW will map Ukrainian counteroffensives when we observe corroborating evidence. We expanded Ukrainian counteroffensives in Rtyshchivka, just southwest of Chuhuiv, based on the Ukrainian General Staff report that Ukrainian forces repulsed a Russian reconnaissance-in-force attempt on the settlement on June 20.



# Assessed Control of Terrain Around Kharkiv as of June 26, 2022, 3:00 PM ET



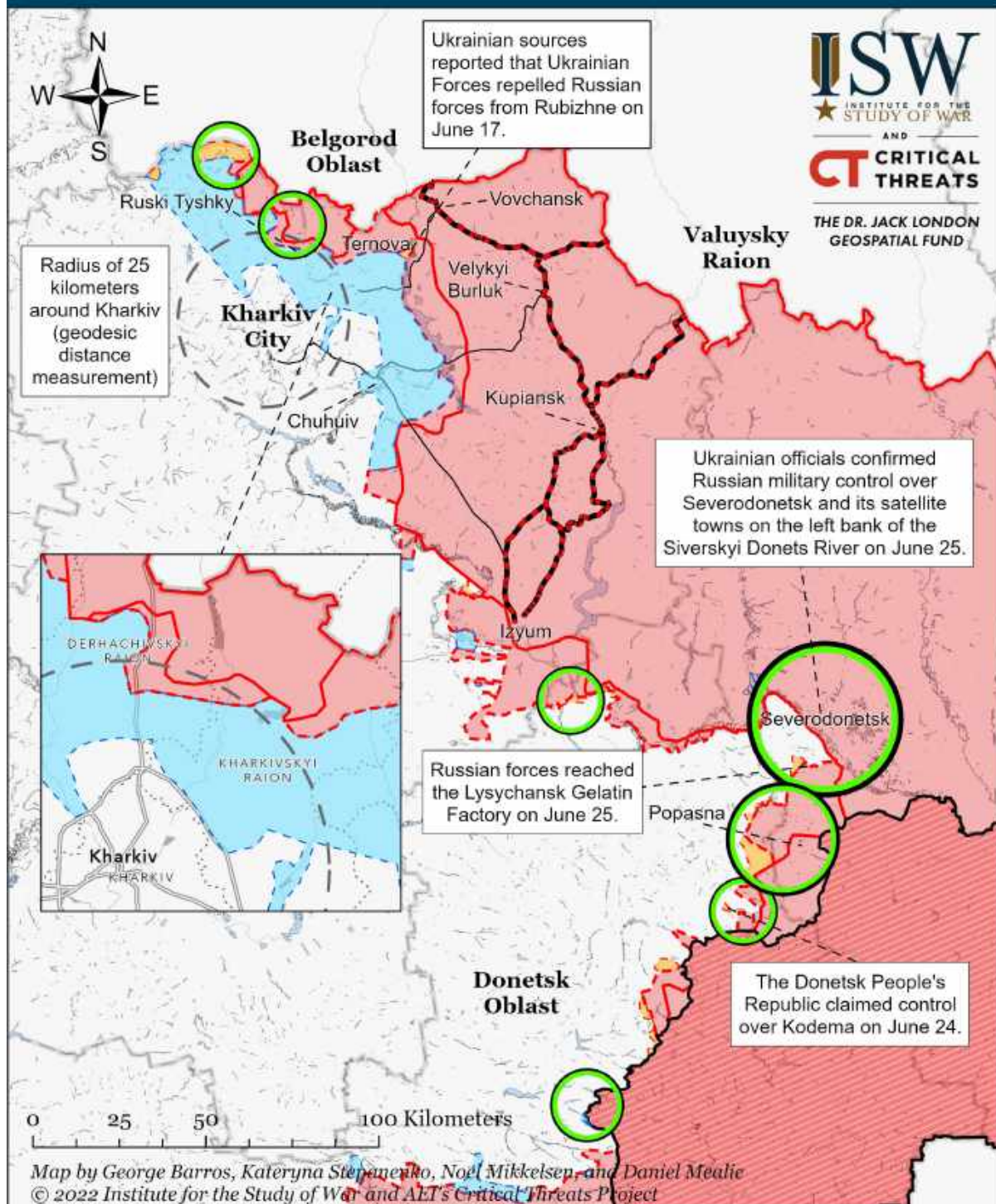
Significant Fighting in the past 24 Hours	Russian-controlled Ukrainian Territory before February 24	Claimed Russian Control over Ukrainian Territory
Key Ukrainian Roads	Assessed Russian Advances in Ukraine*	Claimed Ukrainian Counteroffensives
Russian Ground Lines of Communication	Assessed Russian-controlled Ukrainian Territory	Reported Ukrainian Partisan Warfare

\* Assessed Russian advances are areas where ISW assesses Russian forces have operated in or launched attacks against but do not control.

Note: Ukrainian Deputy Defense Minister Hanna Malyar stated on June 20 that Ukrainian forces have nearly reached the Ukrainian-Russian border. ISW will map Ukrainian counteroffensives when we observe corroborating evidence. We expanded Ukrainian counteroffensives in Rtyshchivka, just southwest of Chuhuiv, based on the Ukrainian General Staff report that Ukrainian forces repulsed a Russian reconnaissance-in-force attempt on the settlement on June 20.



# Assessed Control of Terrain Around Kharkiv as of June 25, 2022, 3:00 PM ET



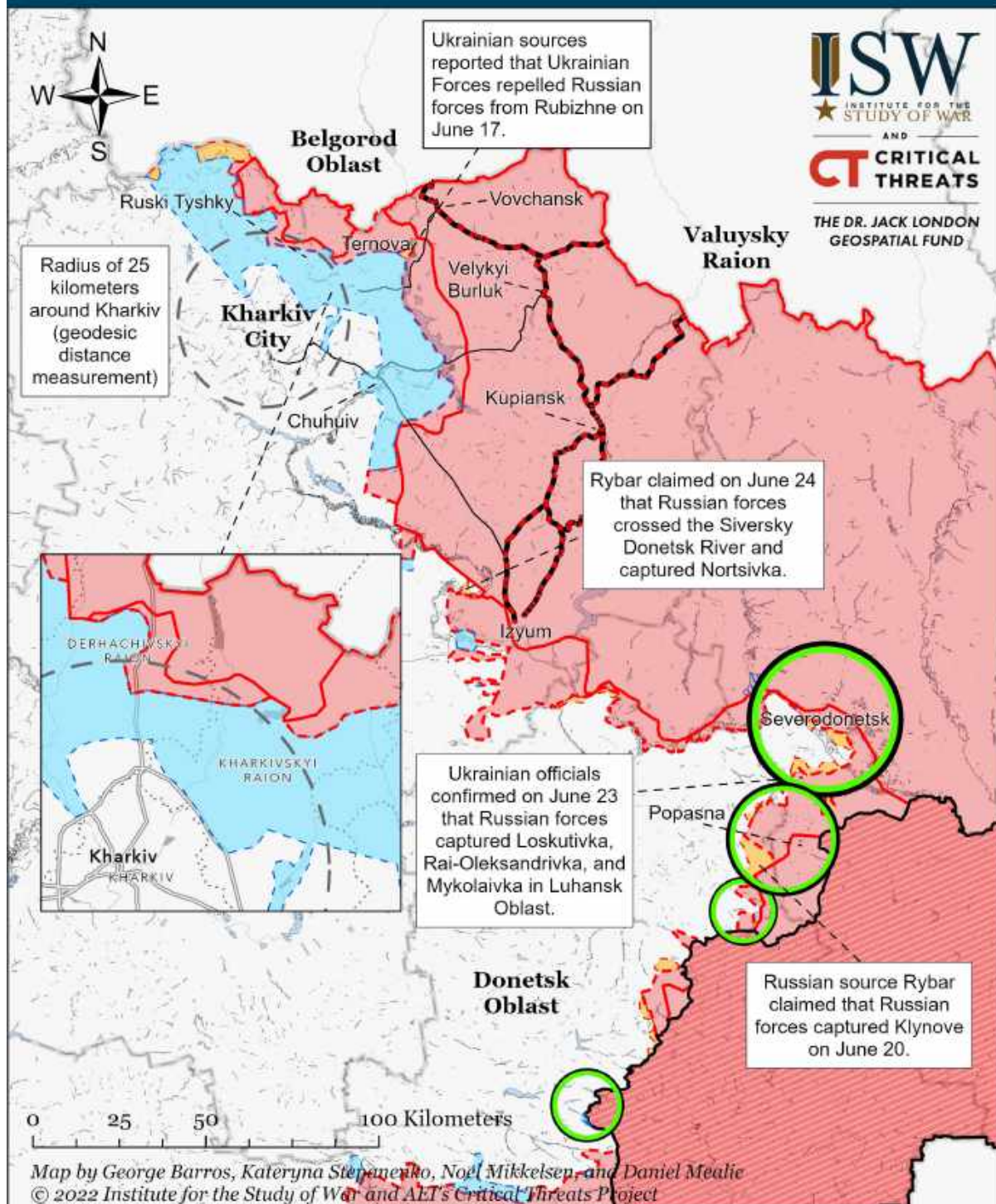
Significant Fighting in the past 24 Hours	Russian-controlled Ukrainian Territory before February 24	Claimed Russian Control over Ukrainian Territory
Key Ukrainian Roads	Assessed Russian Advances in Ukraine*	Claimed Ukrainian Counteroffensives
Russian Ground Lines of Communication	Assessed Russian-controlled Ukrainian Territory	Reported Ukrainian Partisan Warfare

\* Assessed Russian advances are areas where ISW assesses Russian forces have operated in or launched attacks against but do not control.

Note: Ukrainian Deputy Defense Minister Hanna Malyar stated on June 20 that Ukrainian forces have nearly reached the Ukrainian-Russian border. ISW will map Ukrainian counteroffensives when we observe corroborating evidence. We expanded Ukrainian counteroffensives in Rtyshchivka, just southwest of Chuhuiv, based on the Ukrainian General Staff report that Ukrainian forces repulsed a Russian reconnaissance-in-force attempt on the settlement on June 20.



# Assessed Control of Terrain Around Kharkiv as of June 24, 2022, 3:00 PM ET



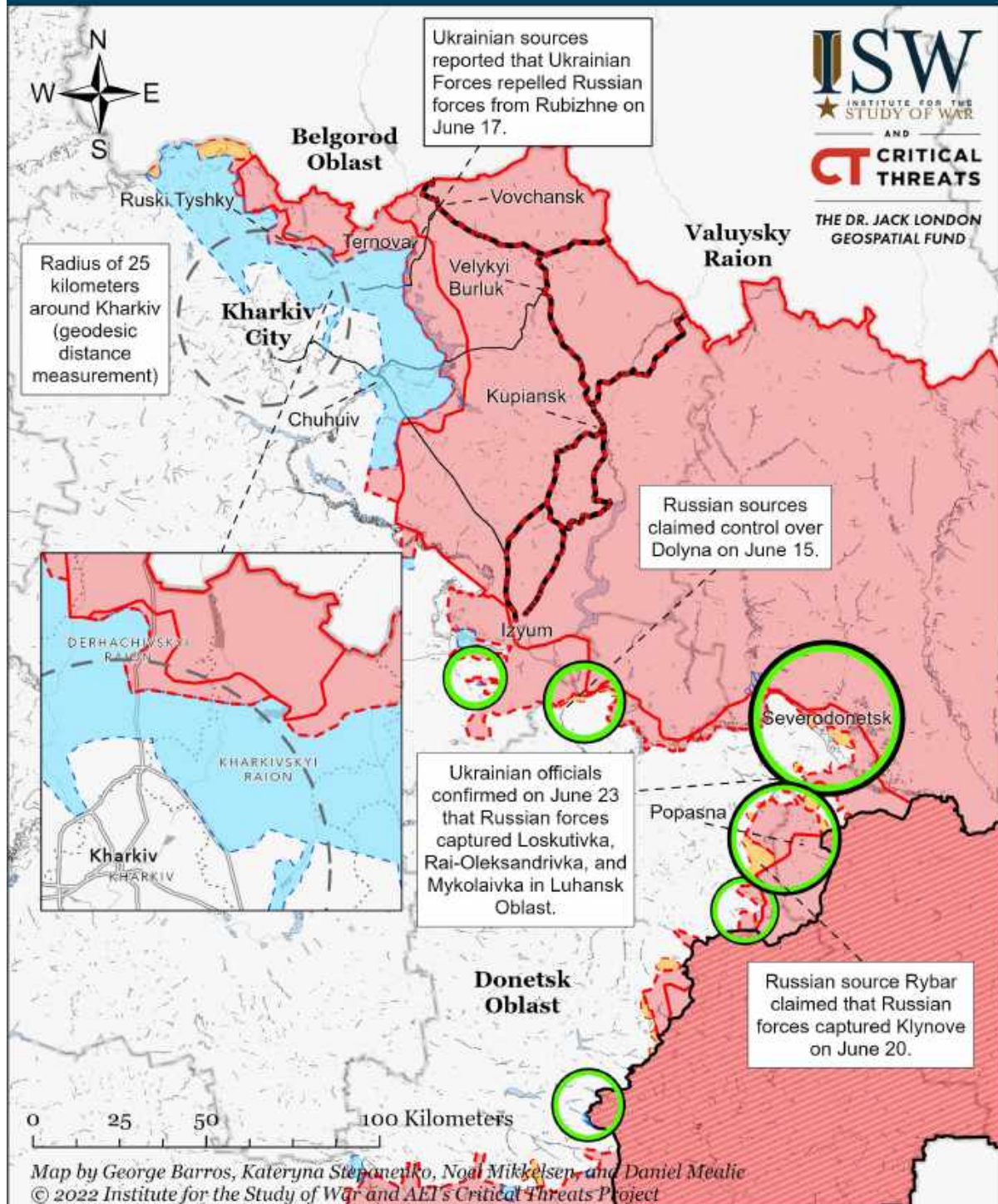
- |   |   |  |
|---|---|--|
| Significant Fighting in the past 24 Hours | Russian-controlled Ukrainian Territory before February 24 | Claimed Russian Control over Ukrainian Territory |
| Key Ukrainian Roads                       | Assessed Russian Advances in Ukraine*                     | Claimed Ukrainian Counteroffensives              |
| Russian Ground Lines of Communication     | Assessed Russian-controlled Ukrainian Territory           | Reported Ukrainian Partisan Warfare              |

\* Assessed Russian advances are areas where ISW assesses Russian forces have operated in or launched attacks against but do not control.

Note: Ukrainian Deputy Defense Minister Hanna Malyar stated on June 20 that Ukrainian forces have nearly reached the Ukrainian-Russian border. ISW will map Ukrainian counteroffensives when we observe corroborating evidence. We expanded Ukrainian counteroffensives in Rtyshchivka, just southwest of Chuhuiv, based on the Ukrainian General Staff report that Ukrainian forces repulsed a Russian reconnaissance-in-force attempt on the settlement on June 20.



# Assessed Control of Terrain Around Kharkiv as of June 23, 2022, 3:00 PM ET



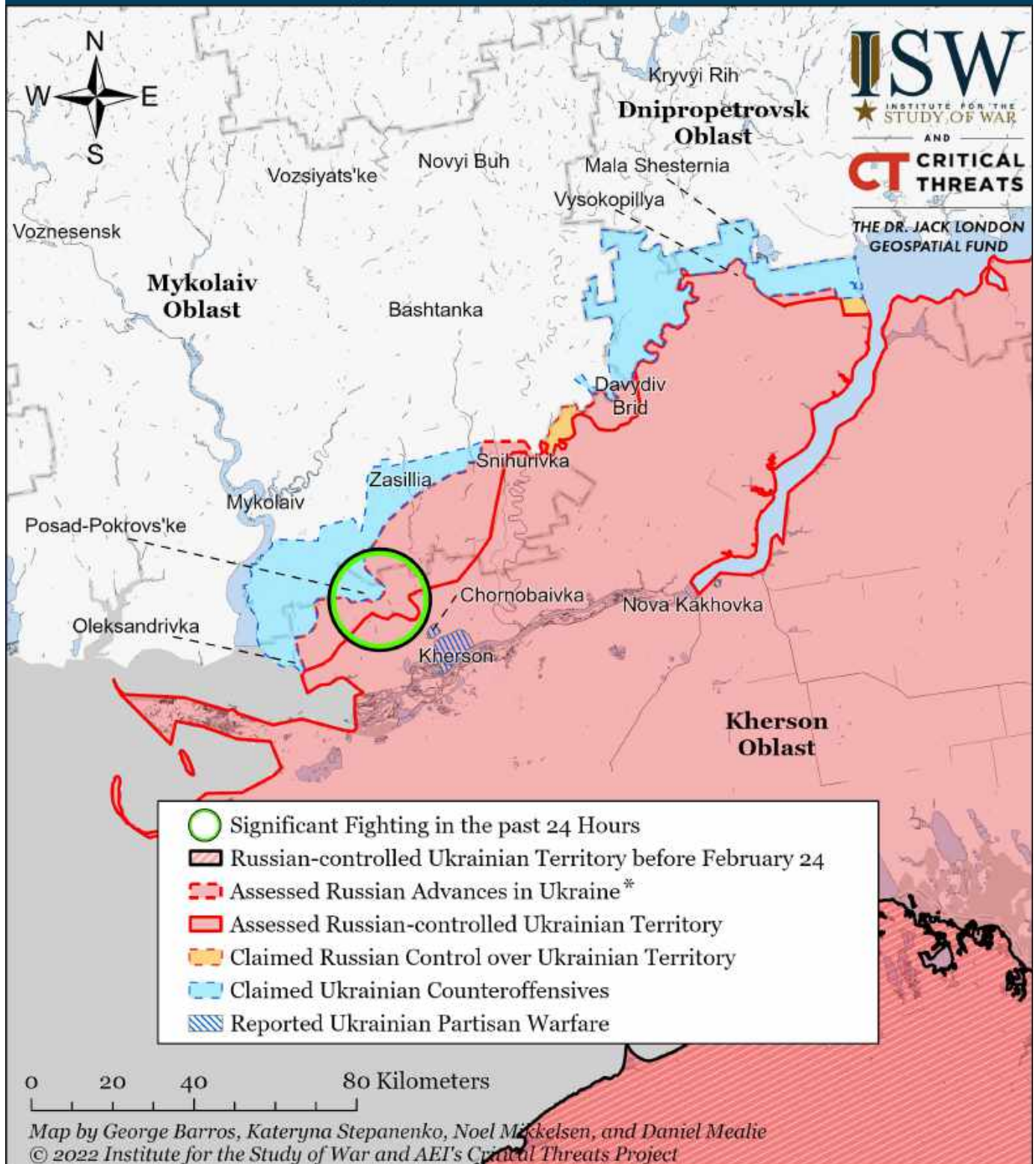
Significant Fighting in the past 24 Hours	Russian-controlled Ukrainian Territory before February 24	Claimed Russian Control over Ukrainian Territory
Key Ukrainian Roads	Assessed Russian Advances in Ukraine*	Claimed Ukrainian Counteroffensives
Russian Ground Lines of Communication	Assessed Russian-controlled Ukrainian Territory	Reported Ukrainian Partisan Warfare

\* Assessed Russian advances are areas where ISW assesses Russian forces have operated in or launched attacks against but do not control.

Note: Ukrainian Deputy Defense Minister Hanna Malyar stated on June 20 that Ukrainian forces have nearly reached the Ukrainian-Russian border. ISW will map Ukrainian counteroffensives when we observe corroborating evidence. We expanded Ukrainian counteroffensives in Rtyshchivka, just southwest of Chuhuiv, based on the Ukrainian General Staff report that Ukrainian forces repulsed Russian reconnaissance-in-force attempt on the settlement on June 20.



# Assessed Control of Terrain Around Kherson and Mykolaiv as of June 27, 2022, 3:00 PM ET

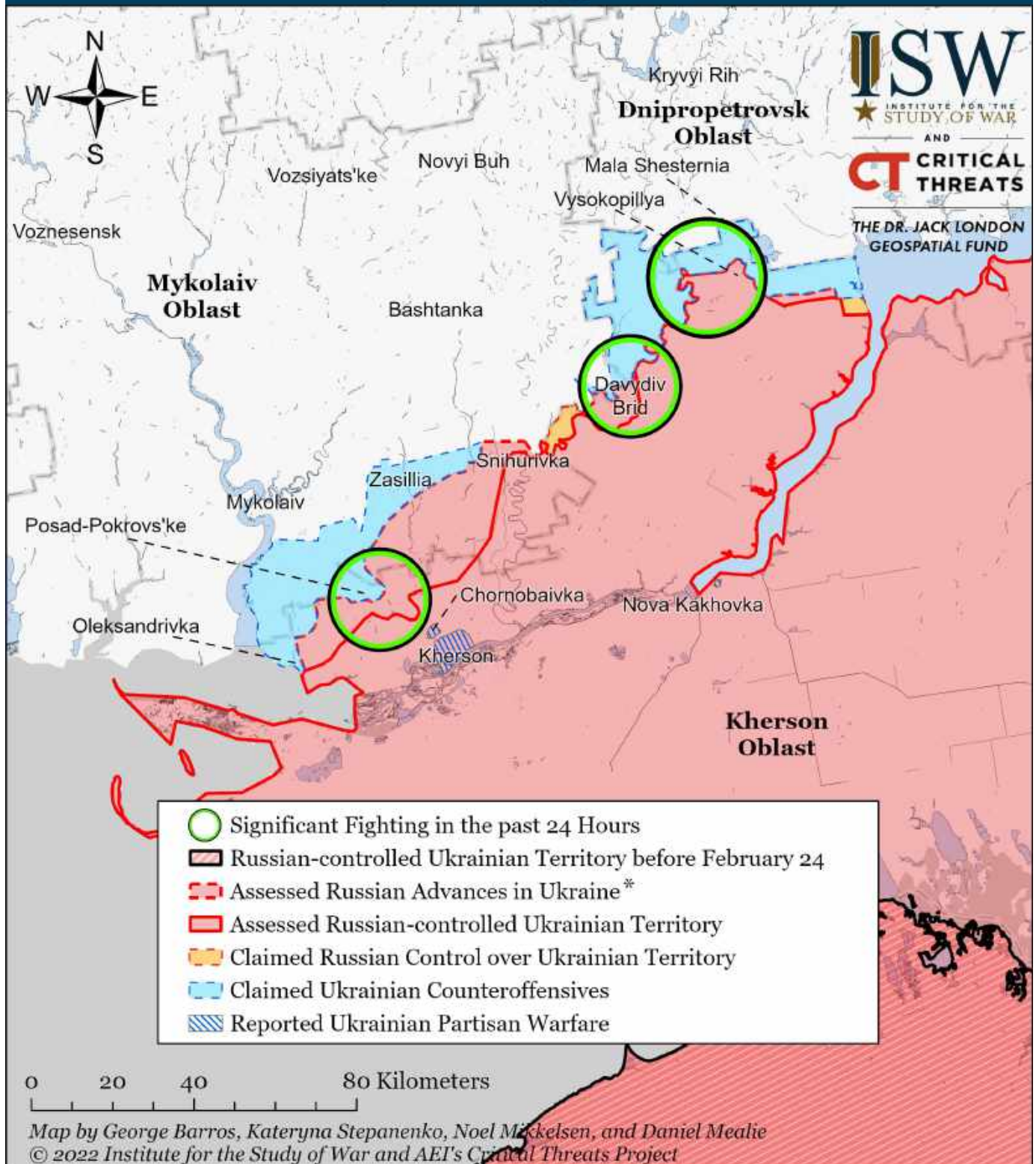


\* Assessed Russian advances are areas where ISW assesses Russian forces have operated in or launched attacks against but do not control.

Note: ISW recessed Ukrainian counteroffensives around Kyselivka on June 23. Ukrainian Presidential Advisor Oleksiy Arestovych previously reported that Ukrainian forces liberated the settlement on June 22, prompting some Ukrainian social media users to respond that Kyselivka remains contested as of June 23. It is unclear if the settlement is currently contested. The Ukrainian General Staff also vaguely noted on June 23 that Russian forces may launch offensive operations in the direction of Kyselivka to Posad-Pokrovske but did not confirm whether Ukrainian forces have liberated Kyselivka. Russian Telegram channel Rybar claimed that Russian forces still control Kyselivka as of June 23, but ISW cannot independently verify this claim. We will update our maps as we collect and confirm more information.



# Assessed Control of Terrain Around Kherson and Mykolaiv as of June 26, 2022, 3:00 PM ET

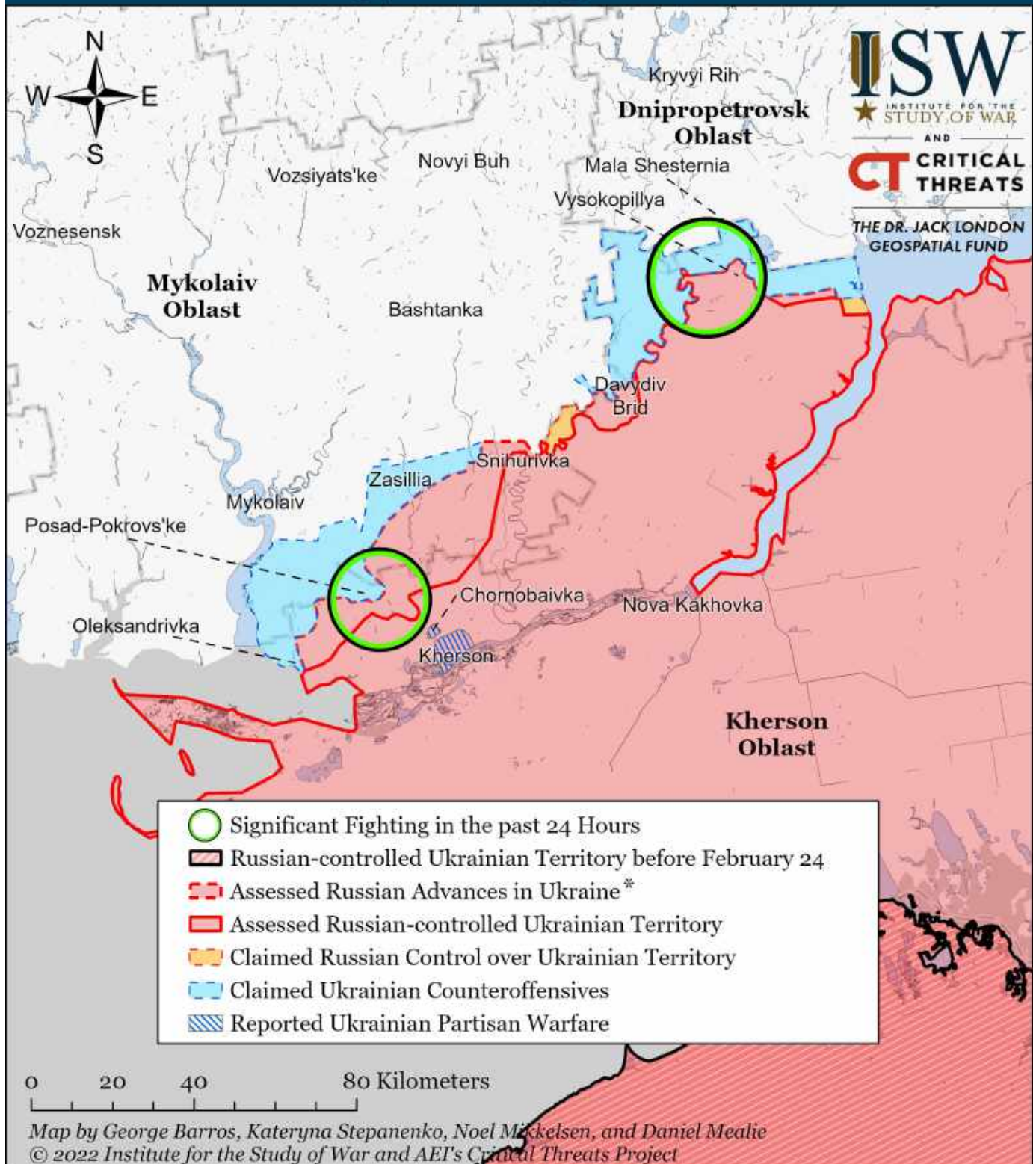


\* Assessed Russian advances are areas where ISW assesses Russian forces have operated in or launched attacks against but do not control.

Note: ISW recessed Ukrainian counteroffensives around Kyselivka on June 23. Ukrainian Presidential Advisor Oleksiy Arestovych previously reported that Ukrainian forces liberated the settlement on June 22, prompting some Ukrainian social media users to respond that Kyselivka remains contested as of June 23. It is unclear if the settlement is currently contested. The Ukrainian General Staff also vaguely noted on June 23 that Russian forces may launch offensive operations in the direction of Kyselivka to Posad-Pokrovske but did not confirm whether Ukrainian forces have liberated Kyselivka. Russian Telegram channel Rybar claimed that Russian forces still control Kyselivka as of June 23, but ISW cannot independently verify this claim. We will update our maps as we collect and confirm more information.



# Assessed Control of Terrain Around Kherson and Mykolaiv as of June 25, 2022, 3:00 PM ET

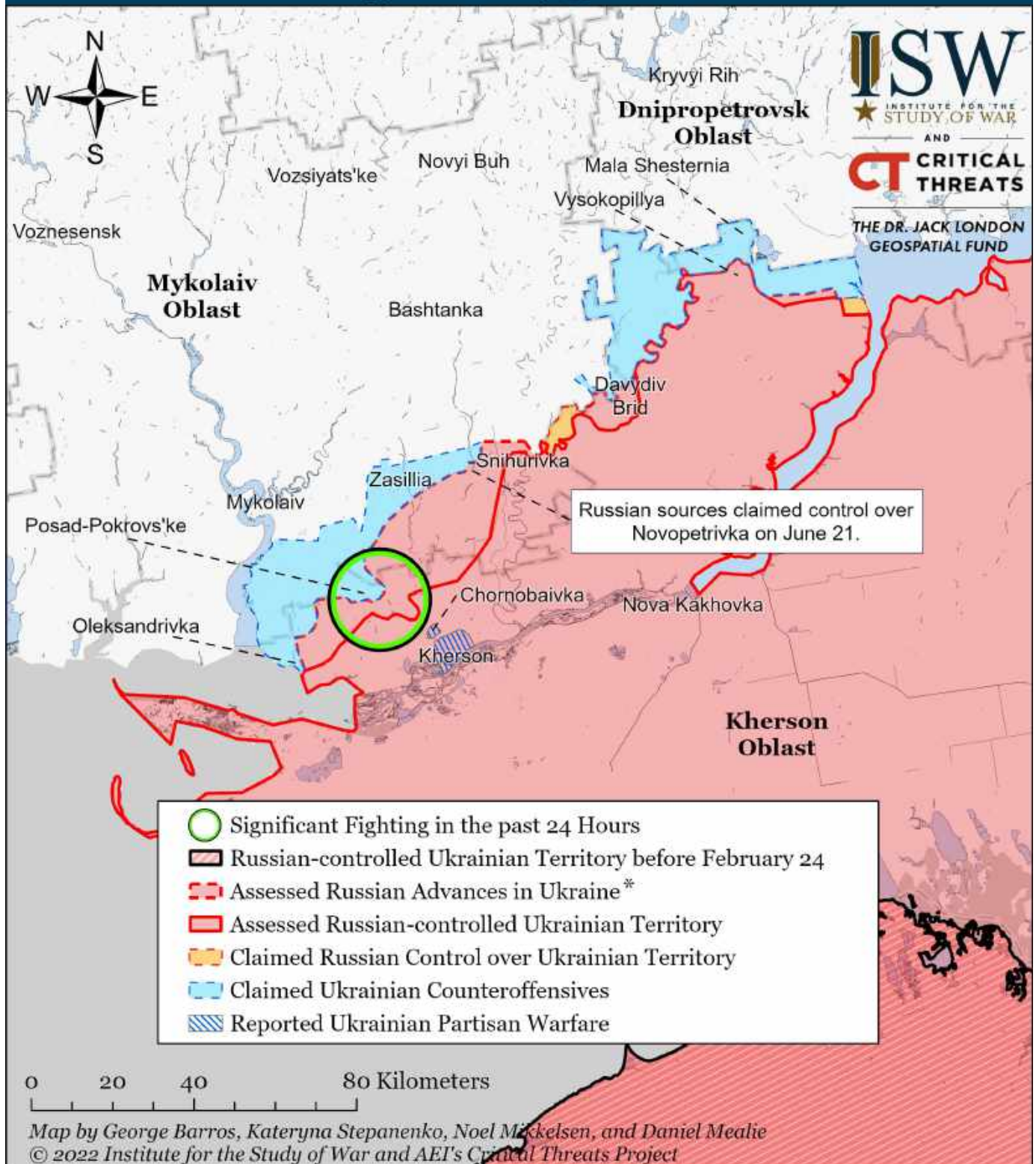


\* Assessed Russian advances are areas where ISW assesses Russian forces have operated in or launched attacks against but do not control.

Note: ISW recessed Ukrainian counteroffensives around Kyselivka on June 23. Ukrainian Presidential Advisor Oleksiy Arestovych previously reported that Ukrainian forces liberated the settlement on June 22, prompting some Ukrainian social media users to respond that Kyselivka remains contested as of June 23. It is unclear if the settlement is currently contested. The Ukrainian General Staff also vaguely noted on June 23 that Russian forces may launch offensive operations in the direction of Kyselivka to Posad-Pokrovske but did not confirm whether Ukrainian forces have liberated Kyselivka. Russian Telegram channel Rybar claimed that Russian forces still control Kyselivka as of June 23, but ISW cannot independently verify this claim. We will update our maps as we collect and confirm more information.



# Assessed Control of Terrain Around Kherson and Mykolaiv as of June 24, 2022, 3:00 PM ET

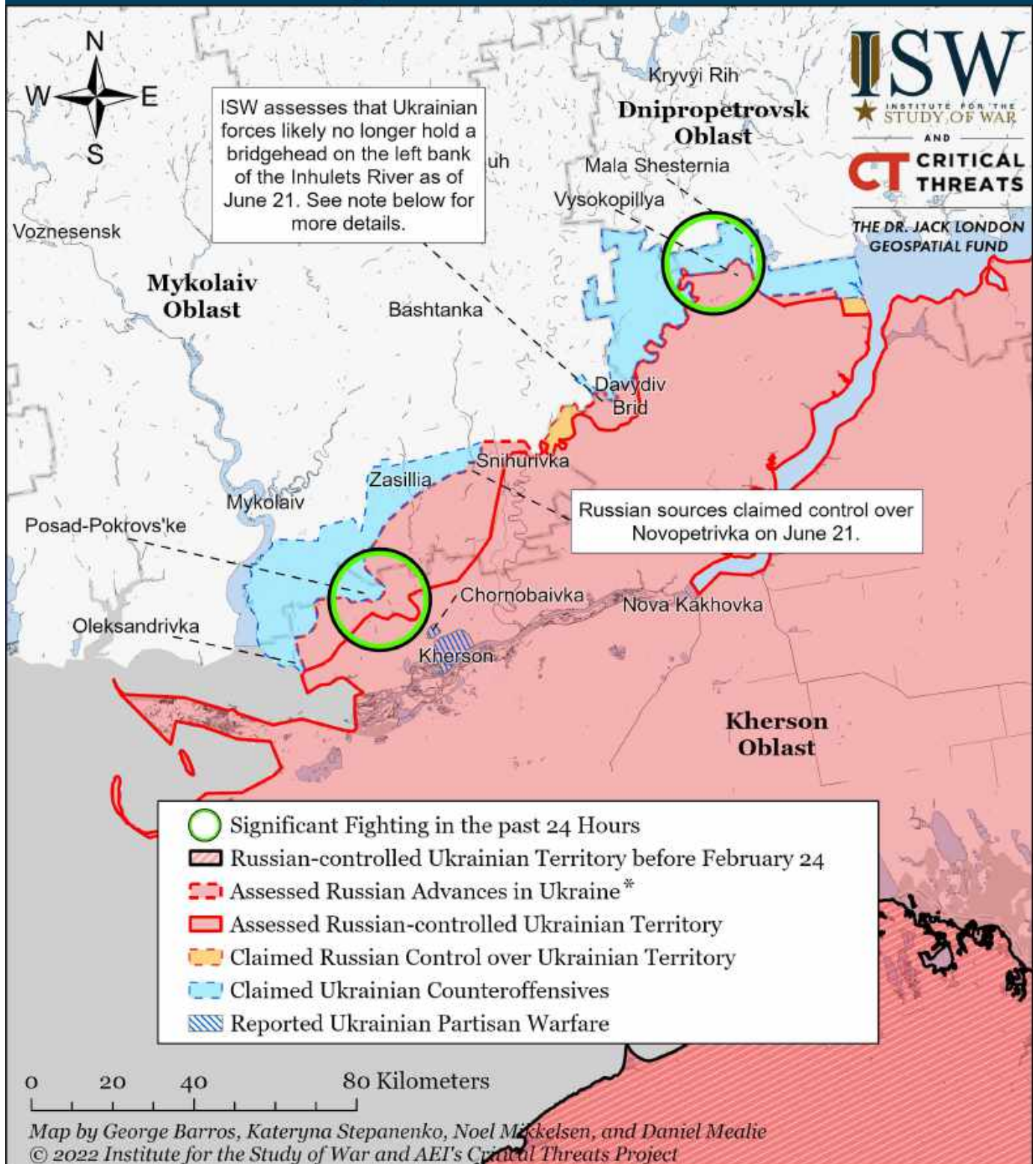


\* Assessed Russian advances are areas where ISW assesses Russian forces have operated in or launched attacks against but do not control.

Note: ISW recessed Ukrainian counteroffensives around Kyselivka on June 23. Ukrainian Presidential Advisor Oleksiy Arestovych previously reported that Ukrainian forces liberated the settlement on June 22, prompting some Ukrainian social media users to respond that Kyselivka remains contested as of June 23. It is unclear if the settlement is currently contested. The Ukrainian General Staff also vaguely noted on June 23 that Russian forces may launch offensive operations in the direction of Kyselivka to Posad-Pokrovske but did not confirm whether Ukrainian forces have liberated Kyselivka. Russian Telegram channel Rybar claimed that Russian forces still control Kyselivka as of June 23, but ISW cannot independently verify this claim. We will update our maps as we collect and confirm more information.



# Assessed Control of Terrain Around Kherson and Mykolaiv as of June 23, 2022, 3:00 PM ET

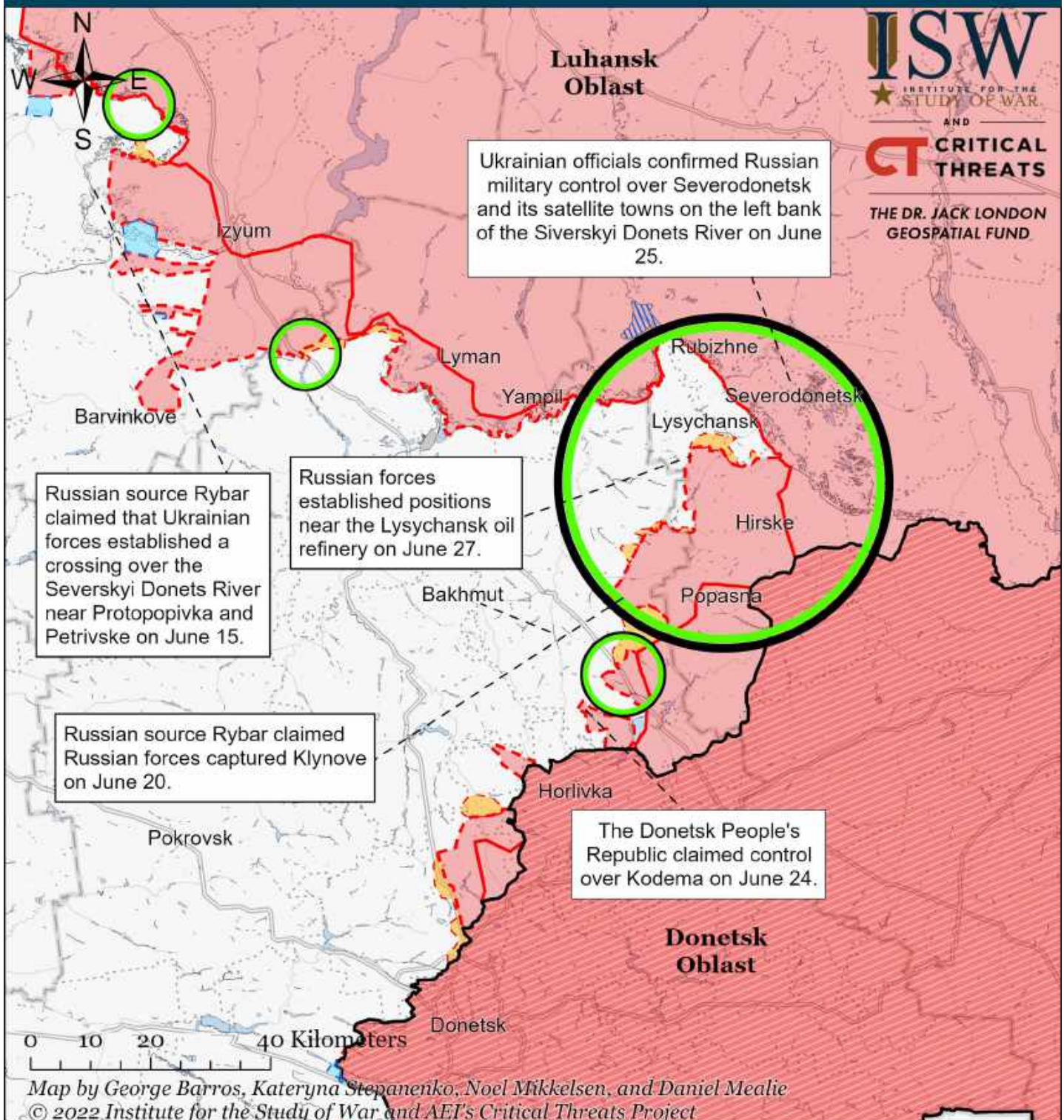


\* Assessed Russian advances are areas where ISW assesses Russian forces have operated in or launched attacks against but do not control.

Note: ISW recessed Ukrainian counteroffensives around Kyselivka on June 23. Ukrainian Presidential Advisor Oleksiy Arestovych previously reported that Ukrainian forces liberated the settlement on June 22, prompting some Ukrainian social media users to respond that Kyselivka remains contested as of June 23. It is unclear if the settlement is currently contested. The Ukrainian General Staff also vaguely noted on June 23 that Russian forces may launch offensive operations in the direction of Kyselivka to Posad-Pokrovske, but did not confirm whether Ukrainian forces have liberated Kyselivka. Russian Telegram channel Rybar claimed that Russian forces still control Kyselivka as of June 23, but ISW cannot independently verify this claim. We will update our maps as we collect and confirm more information.



# Assessed Control of Terrain Around Luhansk as of June 27, 2022, 3:00 PM ET

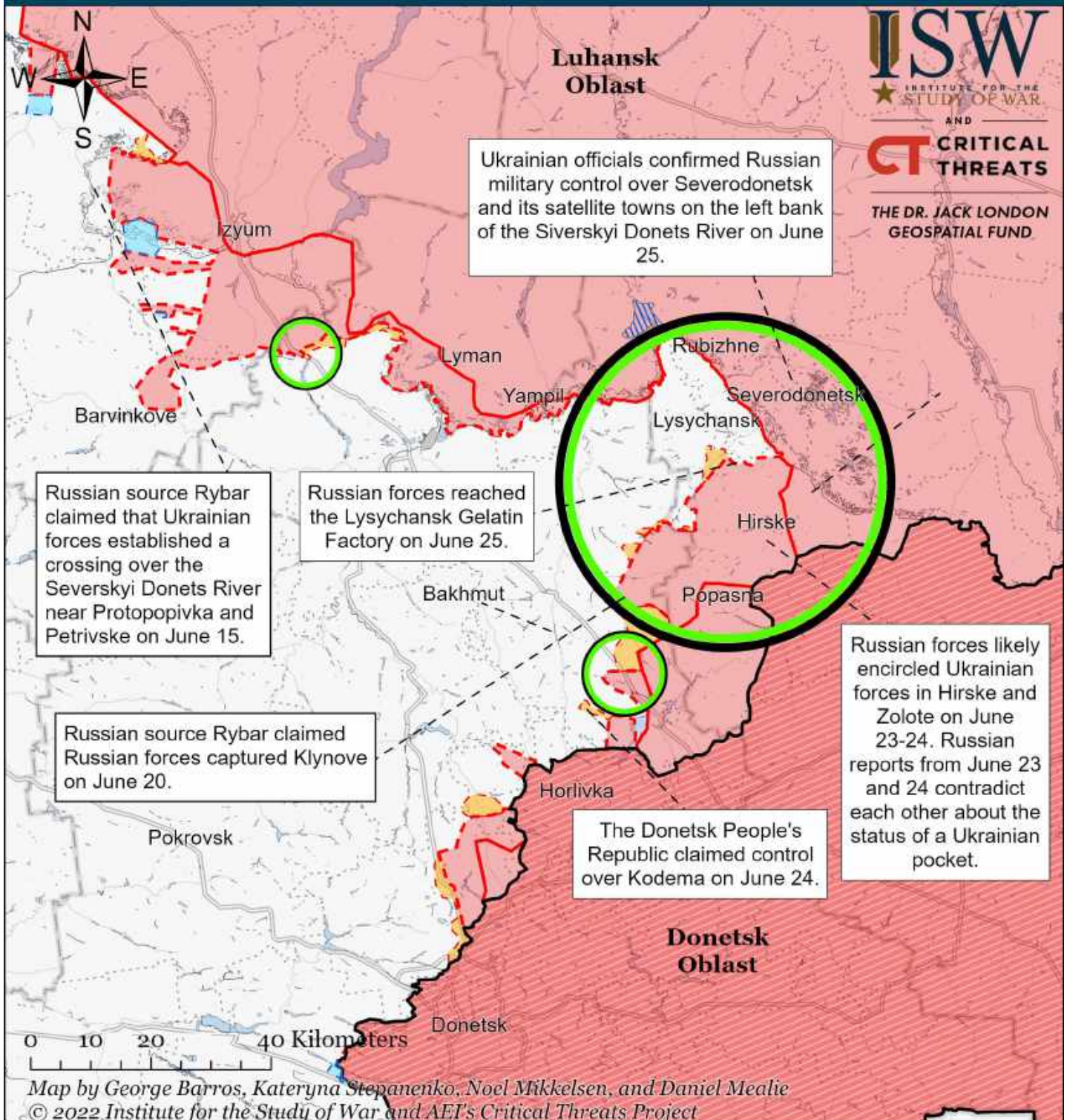


- Significant Fighting in the past 24 Hours
- Assessed Russian-controlled Ukrainian Territory
- Reported Ukrainian Partisan Warfare
- Russian-controlled Ukrainian Territory before February 24
- Claimed Russian Control over Ukrainian Territory
- Assessed Russian Advances in Ukraine\*
- Claimed Ukrainian Counteroffensives

\* Assessed Russian advances are areas where ISW assesses Russian forces have operated in or launched attacks against but do not control.



# Assessed Control of Terrain Around Luhansk as of June 26, 2022, 3:00 PM ET

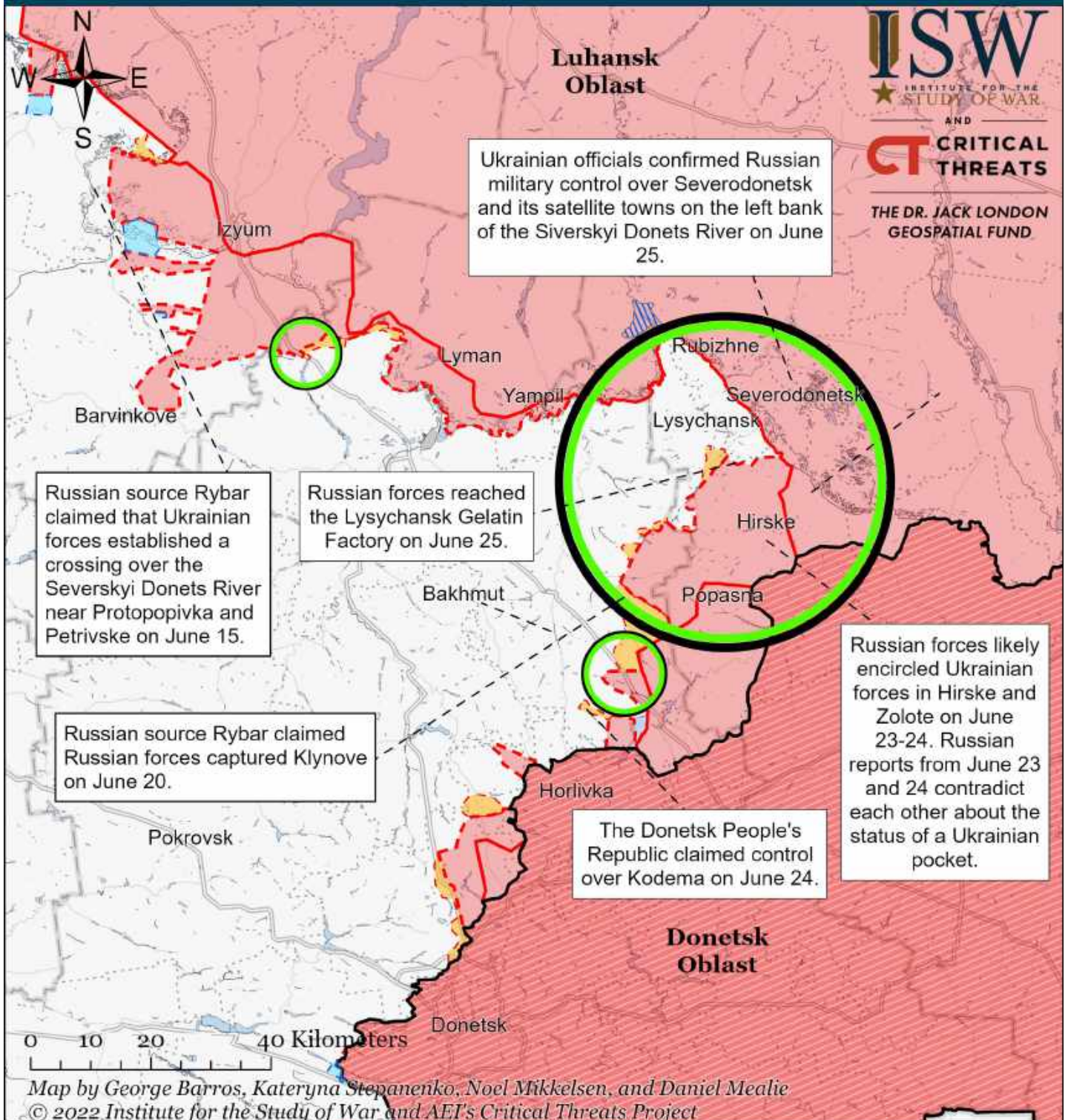


- Significant Fighting in the past 24 Hours
- Assessed Russian-controlled Ukrainian Territory
- Reported Ukrainian Partisan Warfare
- Russian-controlled Ukrainian Territory before February 24
- Claimed Russian Control over Ukrainian Territory
- Assessed Russian Advances in Ukraine\*
- Claimed Ukrainian Counteroffensives

\* Assessed Russian advances are areas where ISW assesses Russian forces have operated in or launched attacks against but do not control.



# Assessed Control of Terrain Around Luhansk as of June 25, 2022, 3:00 PM ET

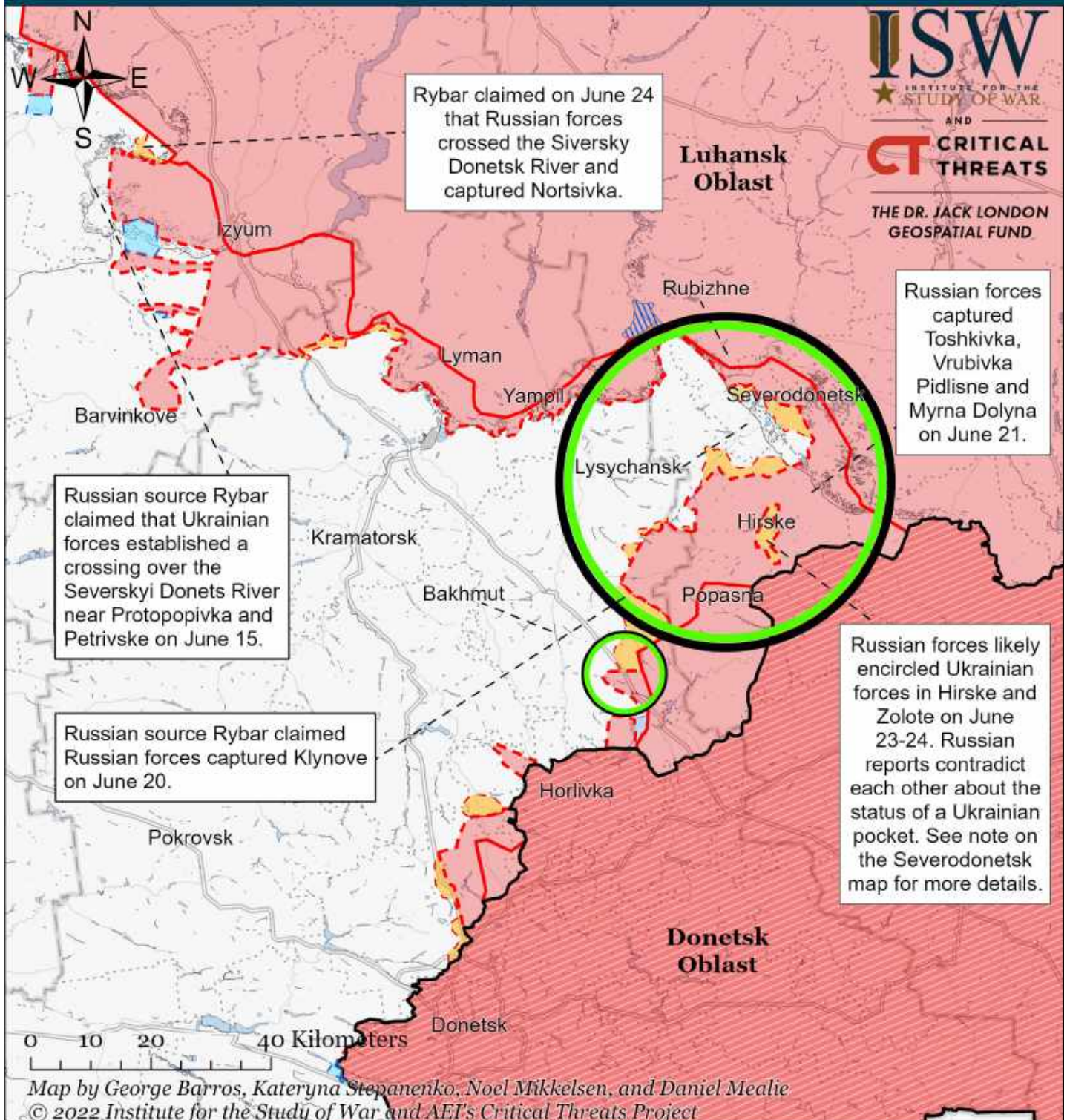


- Significant Fighting in the past 24 Hours
- Assessed Russian-controlled Ukrainian Territory
- Reported Ukrainian Partisan Warfare
- Russian-controlled Ukrainian Territory before February 24
- Claimed Russian Control over Ukrainian Territory
- Assessed Russian Advances in Ukraine\*
- Claimed Ukrainian Counteroffensives

\* Assessed Russian advances are areas where ISW assesses Russian forces have operated in or launched attacks against but do not control.



# Assessed Control of Terrain Around Luhansk as of June 24, 2022, 3:00 PM ET

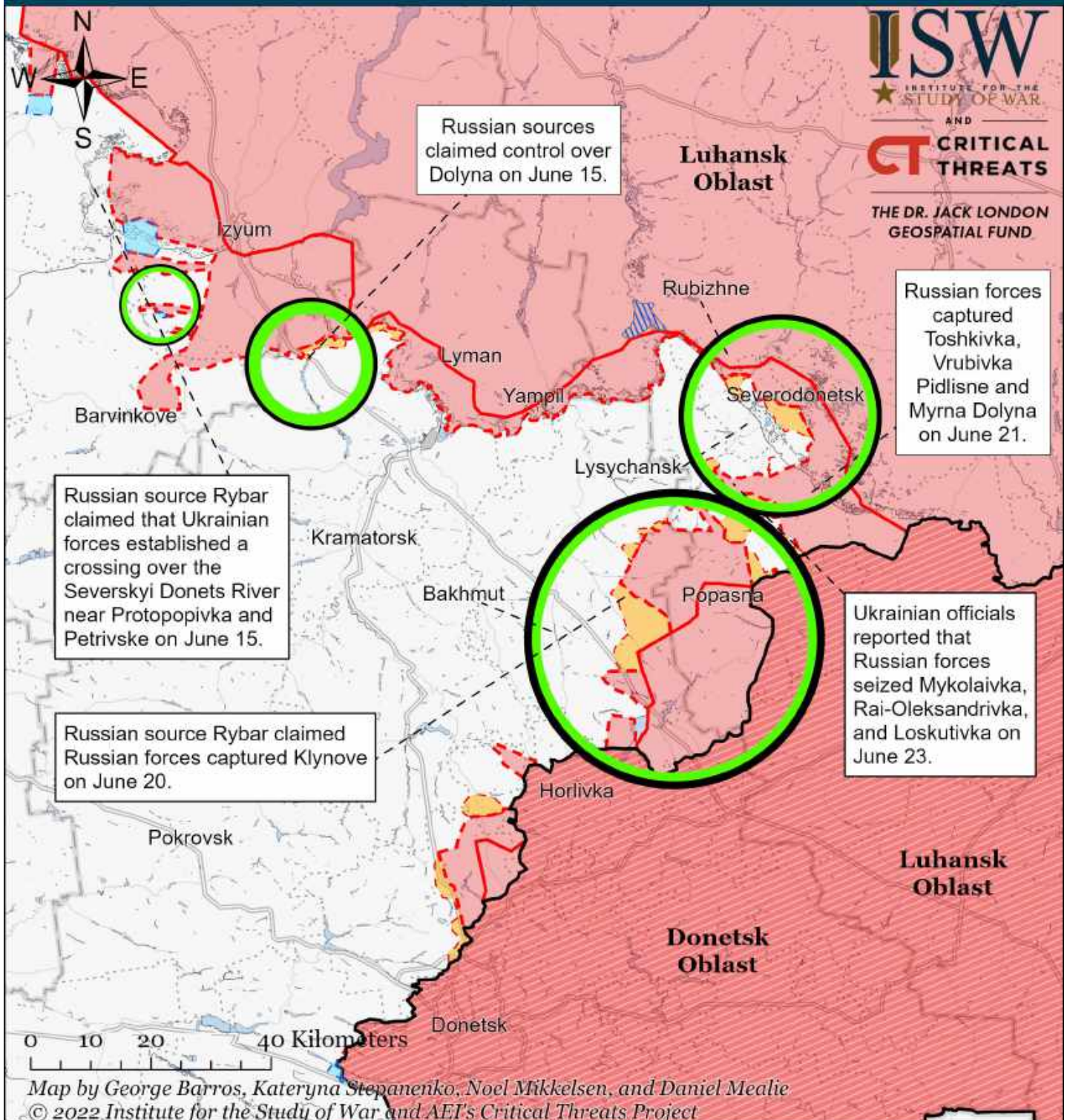


- Significant Fighting in the past 24 Hours
- ▬ Assessed Russian-controlled Ukrainian Territory
- ▨ Reported Ukrainian Partisan Warfare
- ▬ Russian-controlled Ukrainian Territory before February 24
- ▨ Claimed Russian Control over Ukrainian Territory
- - - Assessed Russian Advances in Ukraine\*
- ▬ Claimed Ukrainian Counteroffensives

\* Assessed Russian advances are areas where ISW assesses Russian forces have operated in or launched attacks against but do not control.



# Assessed Control of Terrain Around Luhansk as of June 23, 2022, 3:00 PM ET

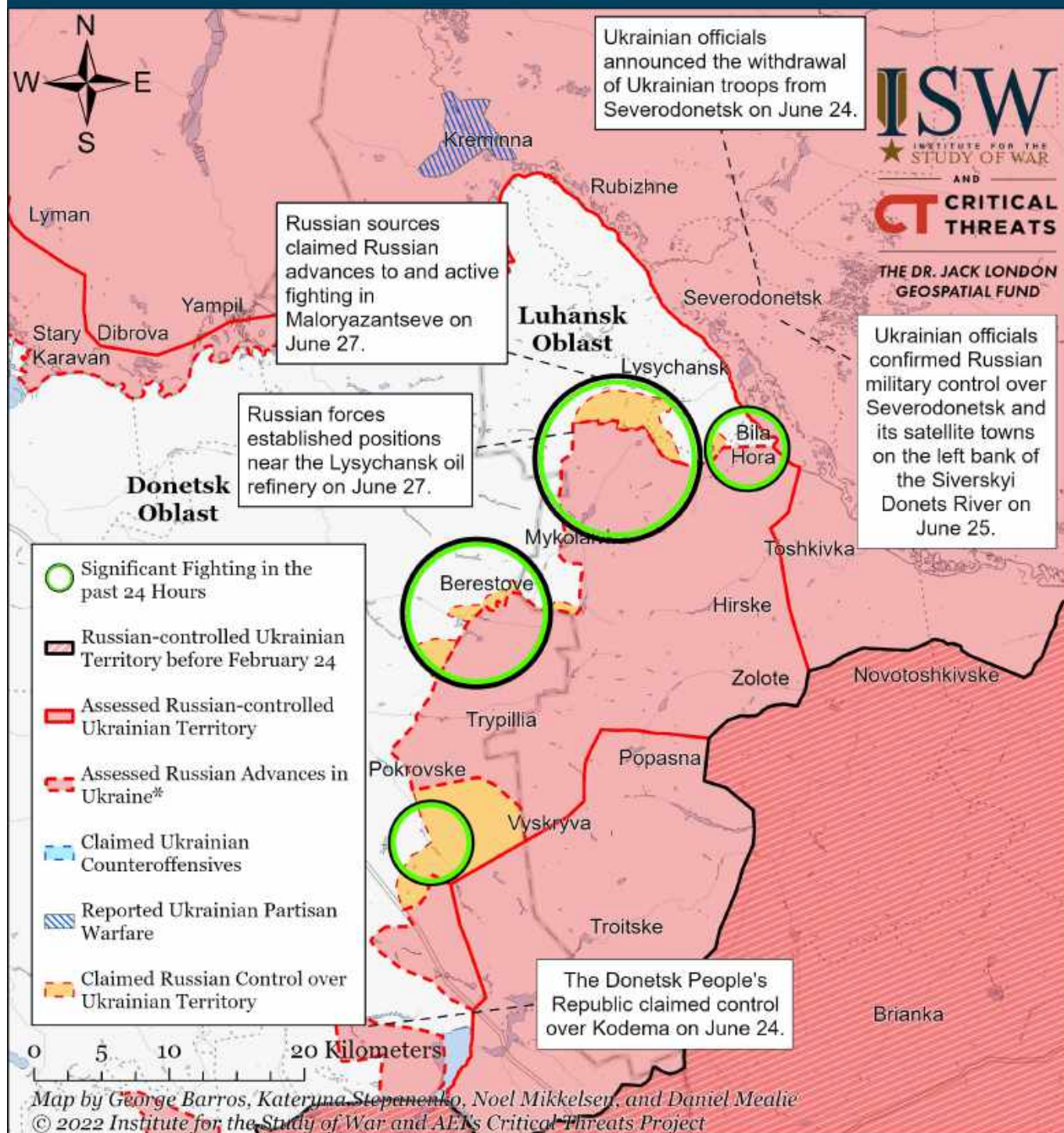


- Significant Fighting in the past 24 Hours
- Assessed Russian-controlled Ukrainian Territory
- Reported Ukrainian Partisan Warfare
- Russian-controlled Ukrainian Territory before February 24
- Claimed Russian Control over Ukrainian Territory
- Assessed Russian Advances in Ukraine\*
- Claimed Ukrainian Counteroffensives

\* Assessed Russian advances are areas where ISW assesses Russian forces have operated in or launched attacks against but do not control.



# Assessed Control of Terrain Around Severodonetsk as of June 27, 2022, 3:00 PM ET

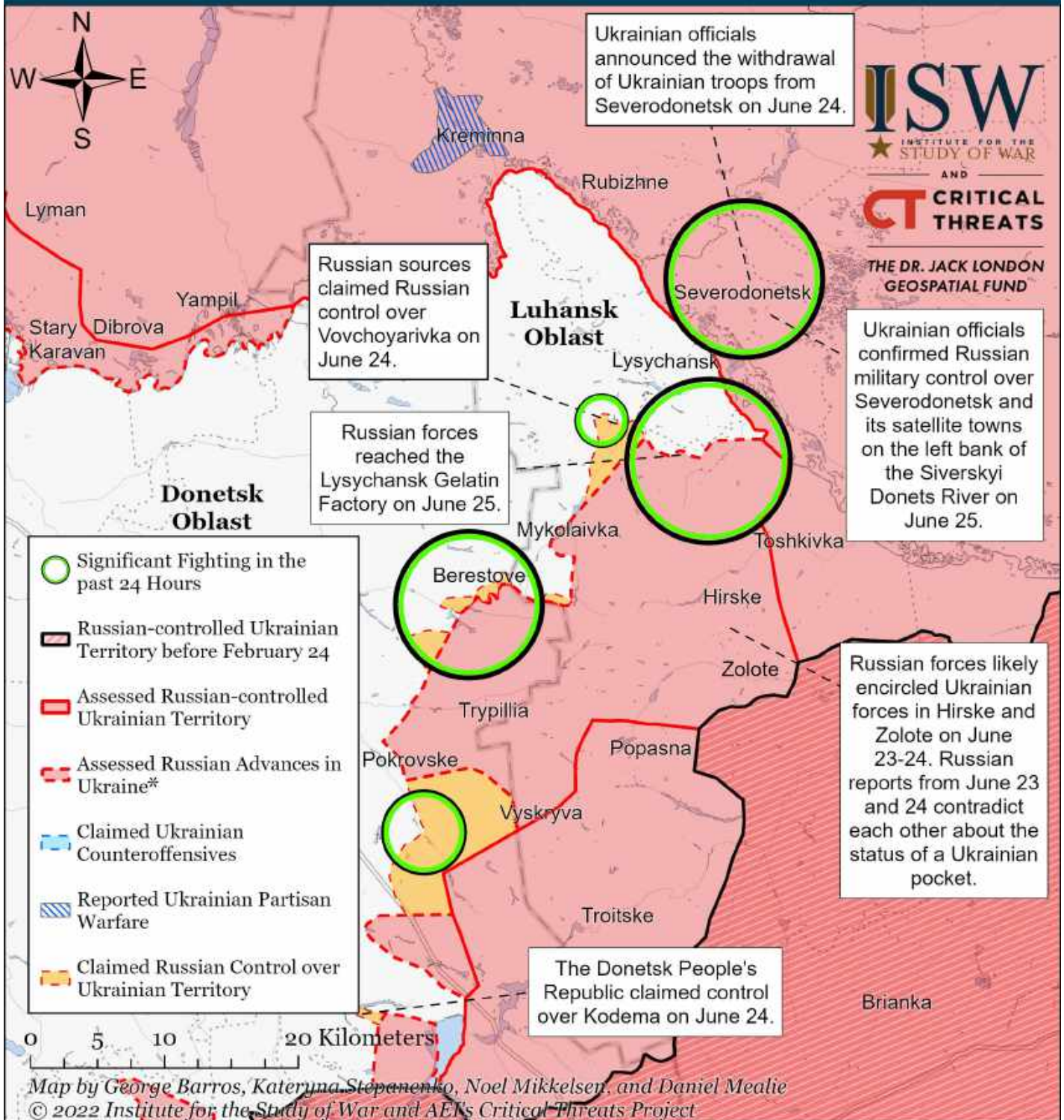


\* Assessed Russian advances are areas where ISW assesses Russian forces have operated in or launched attacks against but do not control.

Note: We refined our assessed frontline advances and updated Russian claims for the Lysychansk area after reconciling several sources on June 27. We recoded Vovchovaryivka as Russian advances and expanded Russian advances towards the Lysychansk oil refinery near Verkhokamyanka. The Ukrainian General Staff reported on June 27 that Russian forces led an offensive operation in the direction of Vovchovaryivka-Verkhokamyanka and had unspecified "partial success" and that Russian forces are securing positions south of the Lysychansk oil refinery. Luhansk Governor Serhiy Haidai stated on June 27 that Russian forces led an unsuccessful attack against Verkhokamyanka. Russian Telegram channel Rybar claimed on June 27 that fighting is ongoing near Maloryazantseve and that Russian forces broke through Ukrainian defenses west of Vovchovaryivka and have captured part of the territory of the Lysychansk oil refinery. Rybar claimed that Russian forces are fighting in the western part of the refinery and in Verkhokamyanka. Rybar claimed that fighting is ongoing near the Lysychansk Rubber Factory, Bila Hora, and the Lysychansk glass factory. We recessed Russian advances outside of the gelatin factory after observing geolocated combat footage of Russian forces shelling Ukrainian positions inside the gelatin factory on June 26.



# Assessed Control of Terrain Around Severodonetsk as of June 26, 2022, 3:00 PM ET

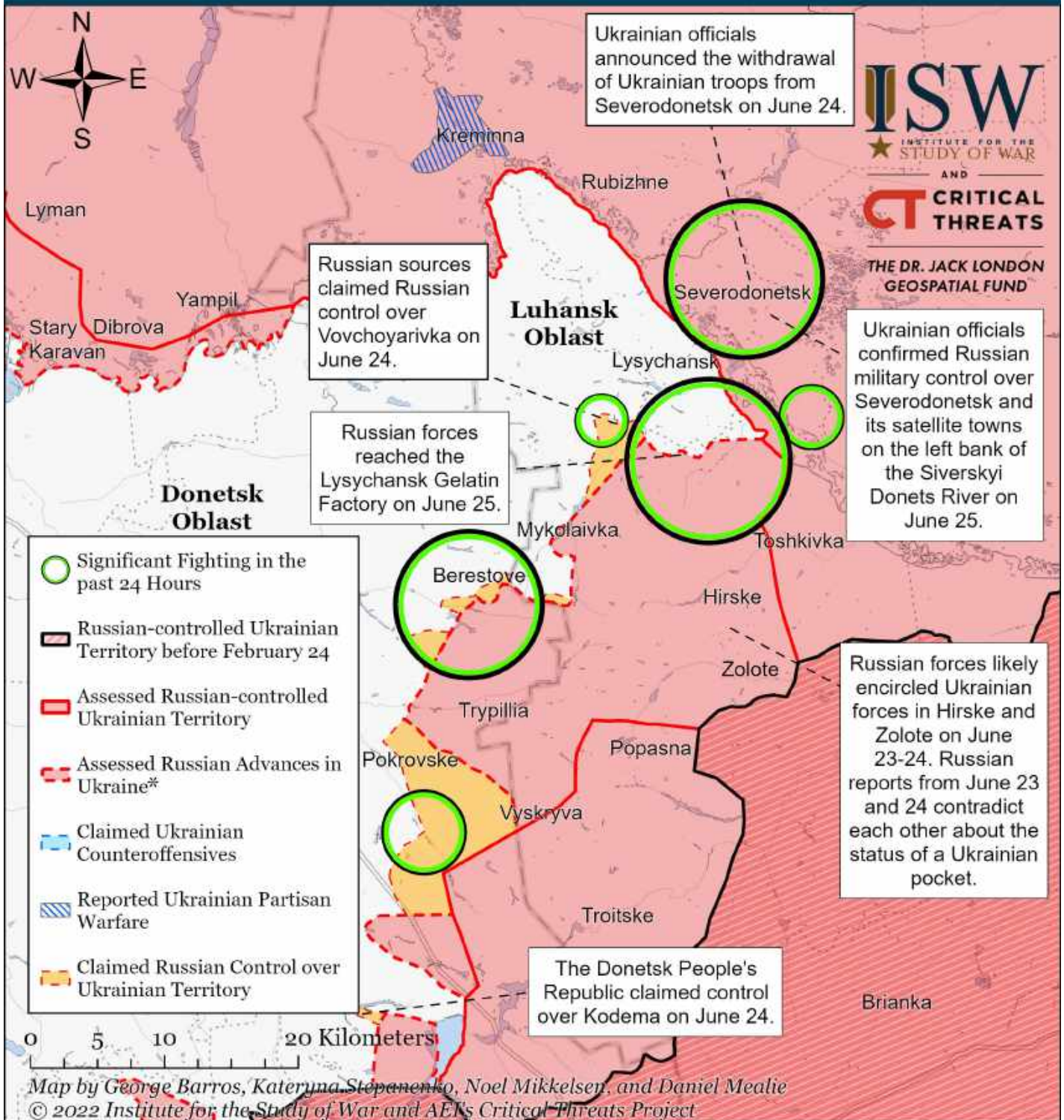


\* Assessed Russian advances are areas where ISW assesses Russian forces have operated in or launched attacks against but do not control.

Note: We expanded Russian military control to Severodonetsk and its satellite towns on the left bank of the Siverskyi Donets River on June 25 after Ukrainian officials confirmed this development. The Ukrainian General Staff stated on June 25 that Russian forces are "consolidating" or "fortifying themselves" in Severodonetsk, Syrotyne, Voronove, and Borivske after the withdrawal of Ukrainian forces from Severodonetsk. Severodonetsk Mayor Oleksandr Stryuk stated on June 25 that Russian forces fully occupy Severodonetsk. Russian news outlet Izvestia posted claimed video from the Azot bomb shelter on June 25. We expanded Russian advances to the Lysychansk gelatin factory in southern Lysychansk after reconciling several sources. Russian news outlet TASS reported on June 25 that Russian forces entered the gelatin factory. Luhansk Governor Serhiy Haidai stated on June 25 that Russian forces are attacking Lysychansk from the south. The gelatin factory is located in southern Lysychansk. NASA FIRMS data also shows heat anomalies at the gelatin factory.



# Assessed Control of Terrain Around Severodonetsk as of June 25, 2022, 3:00 PM ET

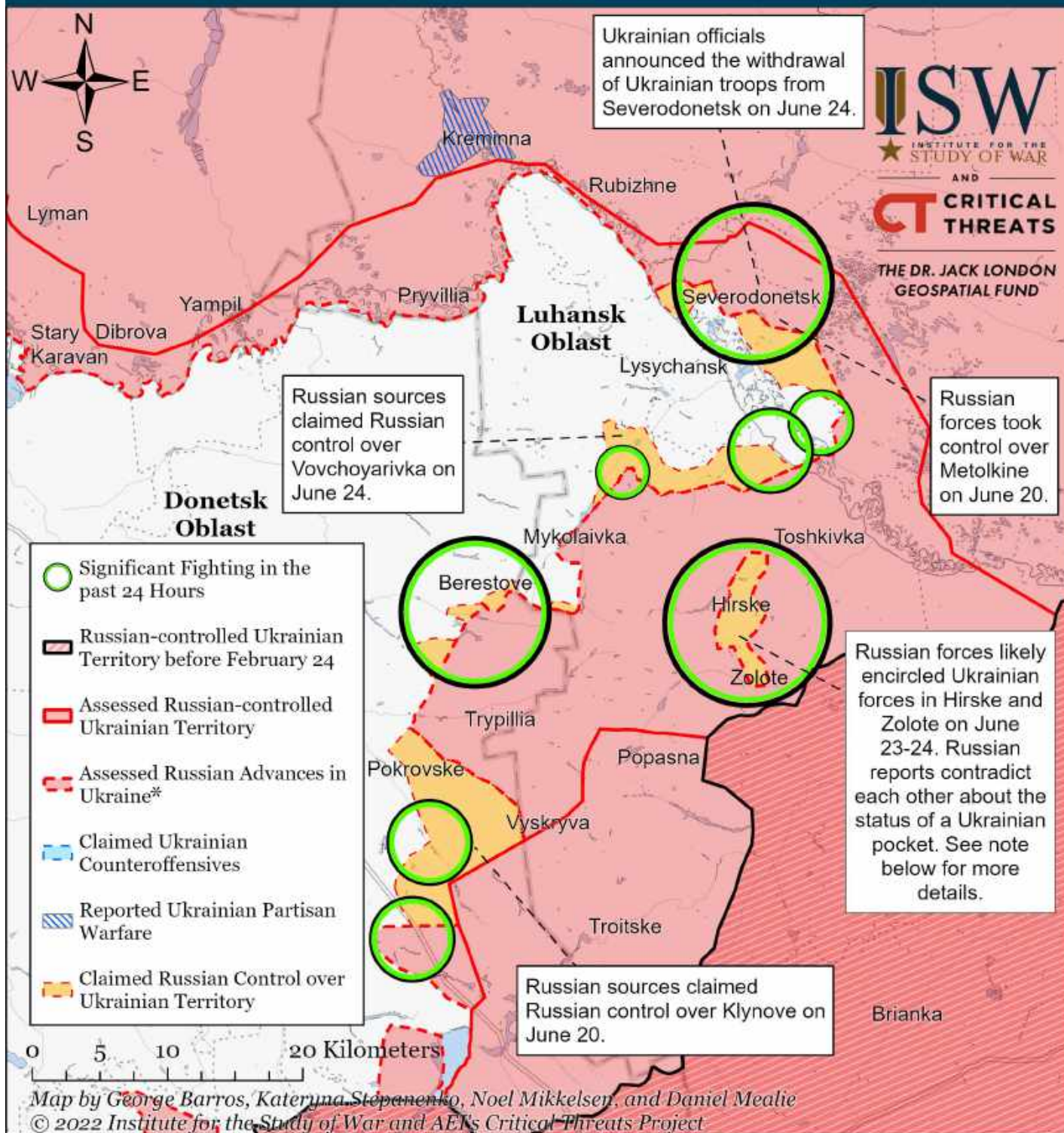


\* Assessed Russian advances are areas where ISW assesses Russian forces have operated in or launched attacks against but do not control.

Note: We expanded Russian military control to Severodonetsk and its satellite towns on the left bank of the Siverskyi Donets River on June 25 after Ukrainian officials confirmed this development. The Ukrainian General Staff stated on June 25 that Russian forces are "consolidating" or "fortifying themselves" in Severodonetsk, Sirotyn, Voronove, and Borivske after the withdrawal of Ukrainian forces from Severodonetsk. Severodonetsk Mayor Oleksandr Stryuk stated on June 25 that Russian forces fully occupy Severodonetsk. Russian news outlet Izvestia posted claimed video from the Azot bomb shelter on June 25. We expanded Russian advances to the Lysychansk gelatin factory in southern Lysychansk after reconciling several sources. Russian news outlet TASS reported on June 25 that Russian forces entered the gelatin factory. Luhansk Governor Serhiy Haidai stated on June 25 that Russian forces are attacking Lysychansk from the south. The gelatin factory is located in southern Lysychansk. NASA FIRMS data also shows heat anomalies at the gelatin factory.



# Assessed Control of Terrain Around Severodonetsk as of June 24, 2022, 3:00 PM ET

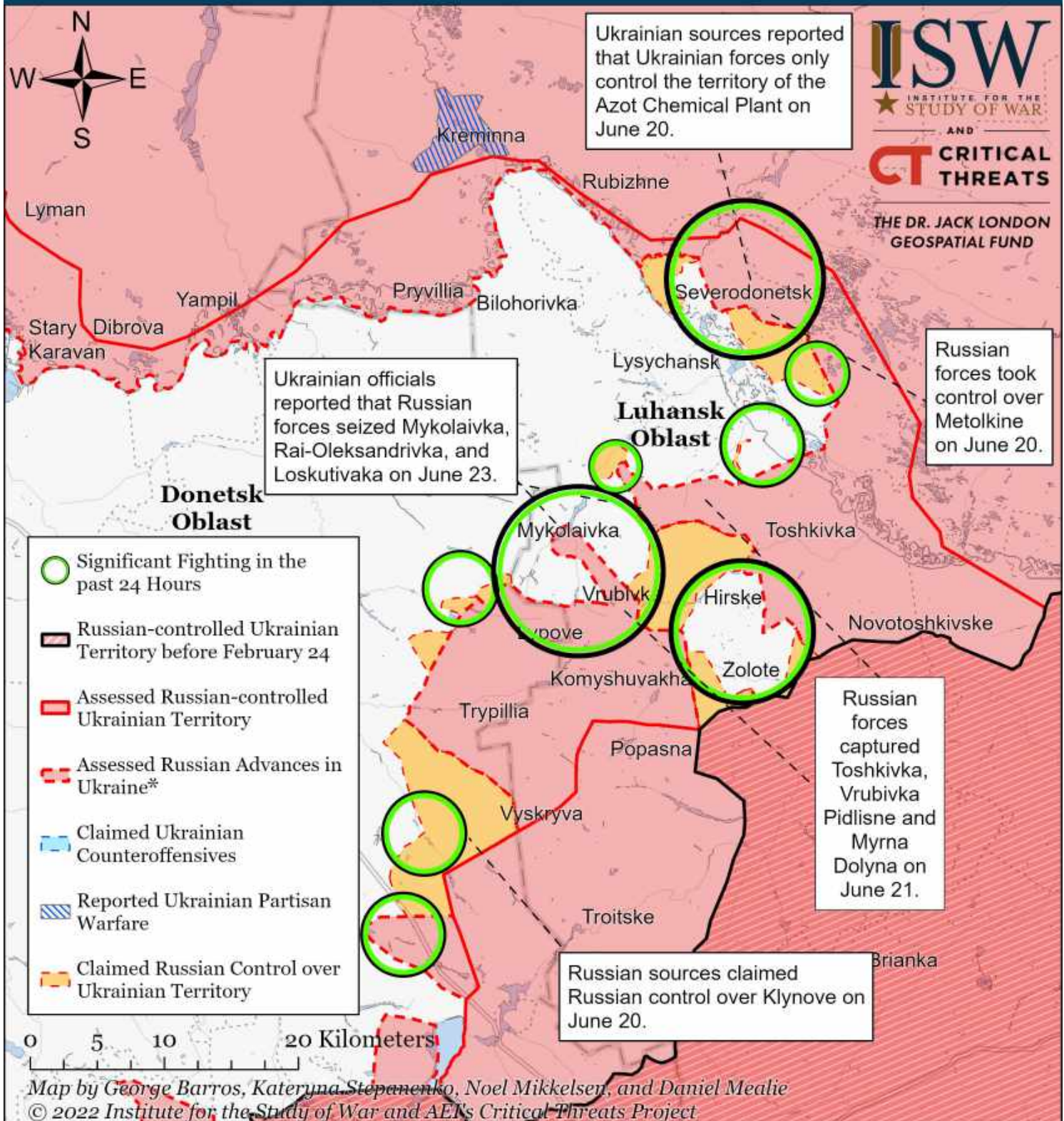


\* Assessed Russian advances are areas where ISW assesses Russian forces have operated in or launched attacks against but do not control.

Note: Russian forces likely have not fully cleared the Hirske-Zolote pocket as of June 24. There are conflicting reports about 800 – 2,000 Ukrainian troops remaining inside this pocket. Different reports have shared conflicting information about the level of organization of Ukrainian troops in this pocket. Hirske Hromada Head Oleksiy Babchenko reported on June 24 that Russian forces entirely occupied the Hirske Hromada and there are insignificant fights on the hromada's outskirts. The Russian Ministry of Defense claimed on June 24 that Russian forces encircled Zolote and Hirske and that 1,800 Ukrainian servicemen are trapped inside. Russian milblogger Release the Kraken claimed on June 24 that Russian forces have finished clearing the Zolote-Hirske encirclement and now completely control both settlements. Other Russian maps show an uncollapsed Ukrainian pocket in Hirske as of June 24. Geolocated footage shows Russian forces in northern Zolote / southern Hirske that likely came from the Orikhove direction. We will update our map when we collect more information.



# Assessed Control of Terrain Around Severodonetsk as of June 23, 2022, 3:00 PM ET



\* Assessed Russian advances are areas where ISW assesses Russian forces have operated in or launched attacks against but do not control.

Note: We extended Russian assessed advances over Severodonetsk based on Luhansk Oblast Administration Head Serhiy Haidai's statement that Ukrainian forces only control the Azot Chemical Plant as of June 20. Haidai added that fighting is ongoing in some unspecified area of the industrial zone. We extended claimed Russian control over settlements between Vrubivka and Toshkivka based on Russian claims that Russian forces surrounded Ukrainian troops in Hirske and Zolote on June 23. We will modify our maps once we obtain more evidence.