

# Assessed Control of Terrain in Ukraine and Main Russian Maneuver Axes as of June 12, 2022, 3:00 PM ET



Map by George Barros and Kateryna Stepanenko

© 2022 Institute for the Study of War and AEI's Critical Threats Project

\* Assessed Russian advances are areas where ISW assesses Russian forces have operated in or launched attacks against but do not control.

# Assessed Control of Terrain in Ukraine and Main Russian Maneuver Axes as of June 11, 2022, 3:00 PM ET



Map by George Barros and Kateryna Stepanenko

© 2022 Institute for the Study of War and AEI's Critical Threats Project

\* Assessed Russian advances are areas where ISW assesses Russian forces have operated in or launched attacks against but do not control.



# Assessed Control of Terrain in Ukraine and Main Russian Maneuver Axes as of June 10, 2022, 3:00 PM ET



Map by George Barros and Kateryna Stepanenko

© 2022 Institute for the Study of War and AEI's Critical Threats Project

\* Assessed Russian advances are areas where ISW assesses Russian forces have operated in or launched attacks against but do not control.

# Assessed Control of Terrain in Ukraine and Main Russian Maneuver Axes as of June 9, 2022, 3:00 PM ET



Map by George Barros and Kateryna Stepanenko

© 2022 Institute for the Study of War and AEI's Critical Threats Project

\* Assessed Russian advances are areas where ISW assesses Russian forces have operated in or launched attacks against but do not control.



# Assessed Control of Terrain in Ukraine and Main Russian Maneuver Axes as of June 8, 2022, 3:00 PM ET



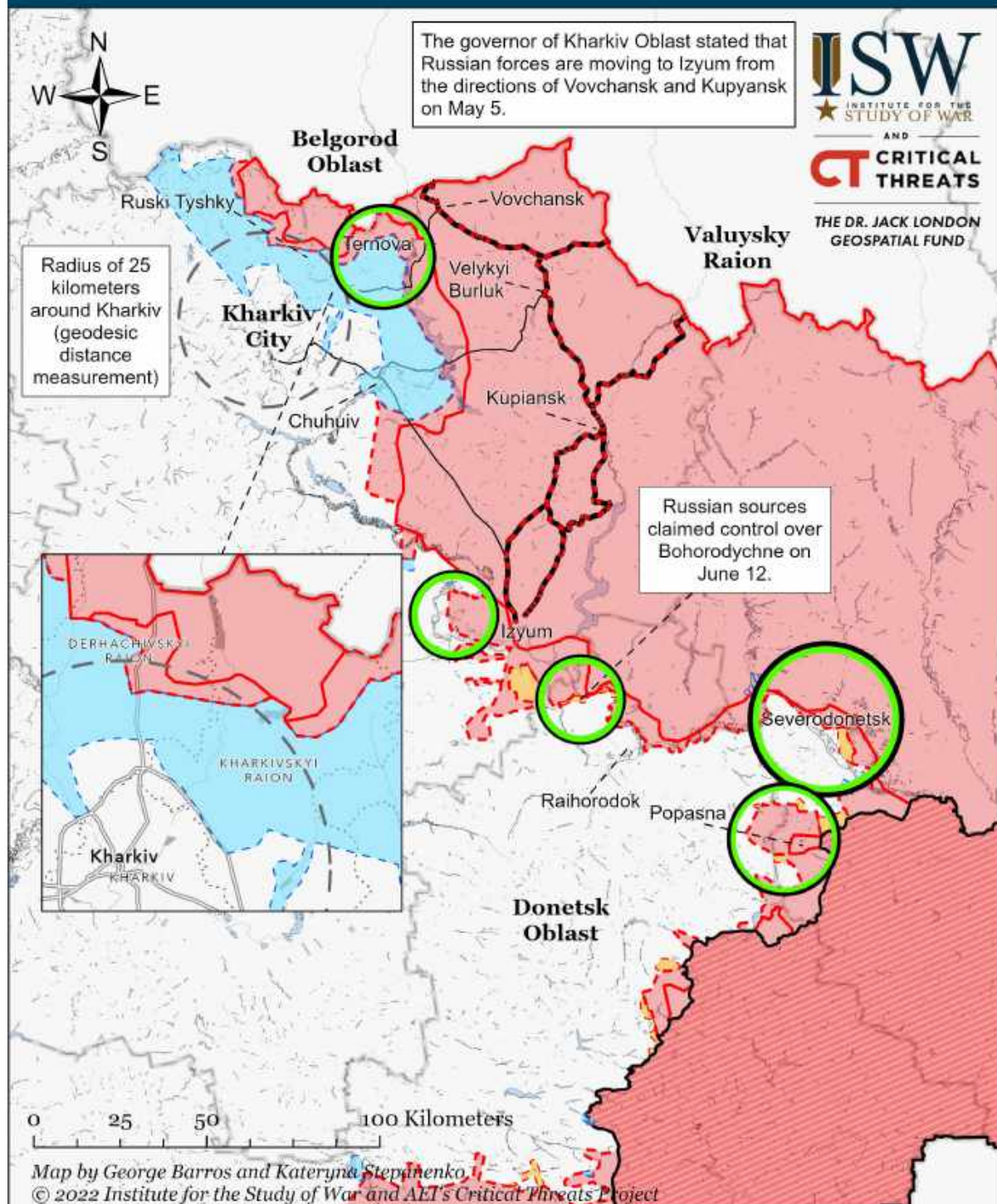
Map by George Barros and Kateryna Stepanenko

© 2022 Institute for the Study of War and AEI's Critical Threats Project

\* Assessed Russian advances are areas where ISW assesses Russian forces have operated in or launched attacks against but do not control.



# Assessed Control of Terrain Around Kharkiv as of June 12, 2022, 3:00 PM ET



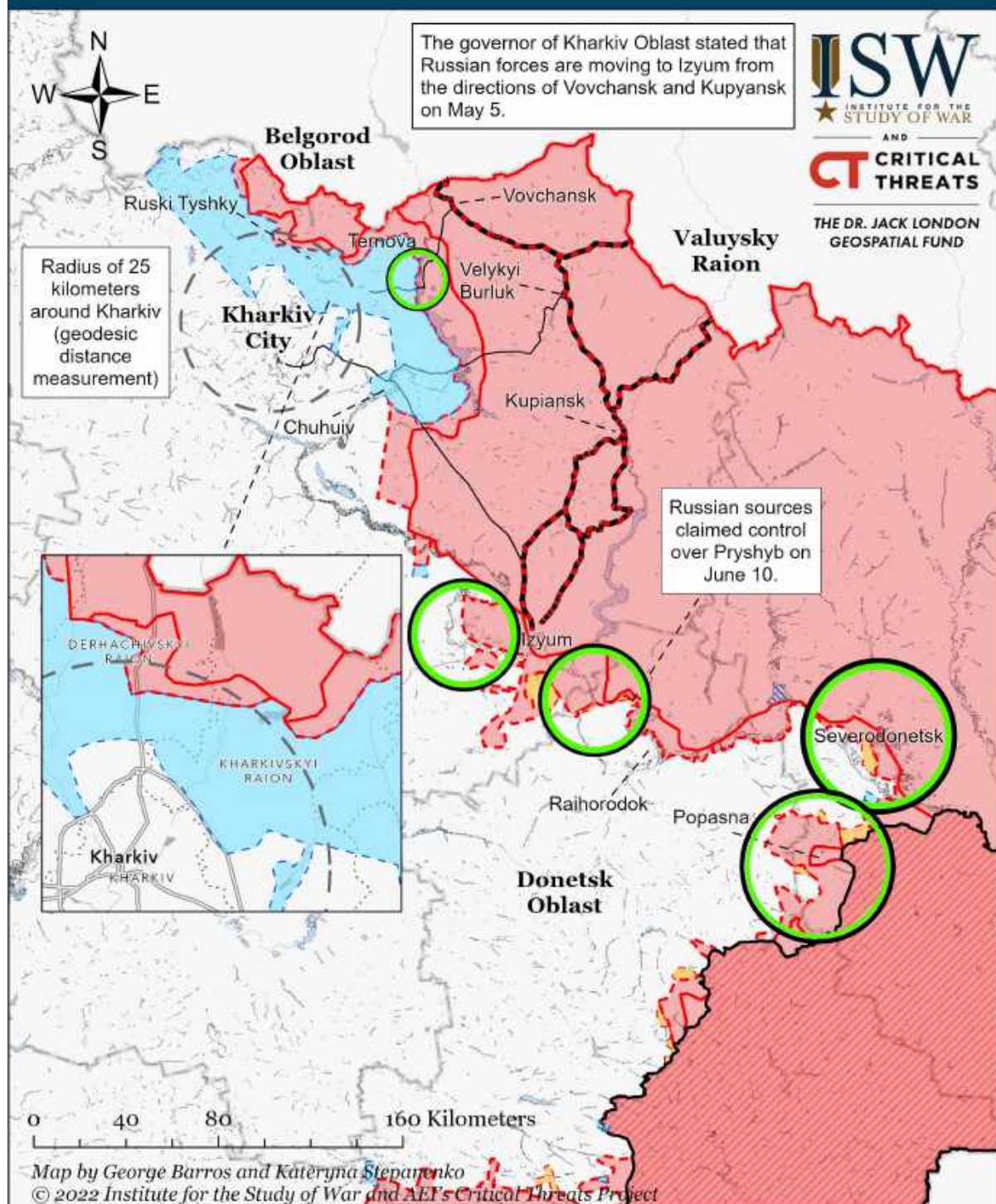
Significant Fighting in the past 24 Hours	Russian-controlled Ukrainian Territory before February 24	Claimed Russian Control over Ukrainian Territory
Key Ukrainian Roads	Assessed Russian Advances in Ukraine*	Claimed Ukrainian Counteroffensives
Russian Ground Lines of Communication	Assessed Russian-controlled Ukrainian Territory	Reported Ukrainian Partisan Warfare

\* Assessed Russian advances are areas where ISW assesses Russian forces have operated in or launched attacks against but do not control.

Note: ISW is unable to verify Russian reports that Ukrainian forces crossed the Pechenihy Reservoir, established positions in Khotomlyia in late May, and are operating on the road spanning Primorskoye - Martovoye - Pershotravnevoye - Khotomlyia as of June 2. We recessed Russian control in this area and recoded it as Russian advances on June 4 but will not advance Ukrainian counteroffensives until we observe corroborating evidence.



# Assessed Control of Terrain Around Kharkiv as of June 11, 2022, 3:00 PM ET



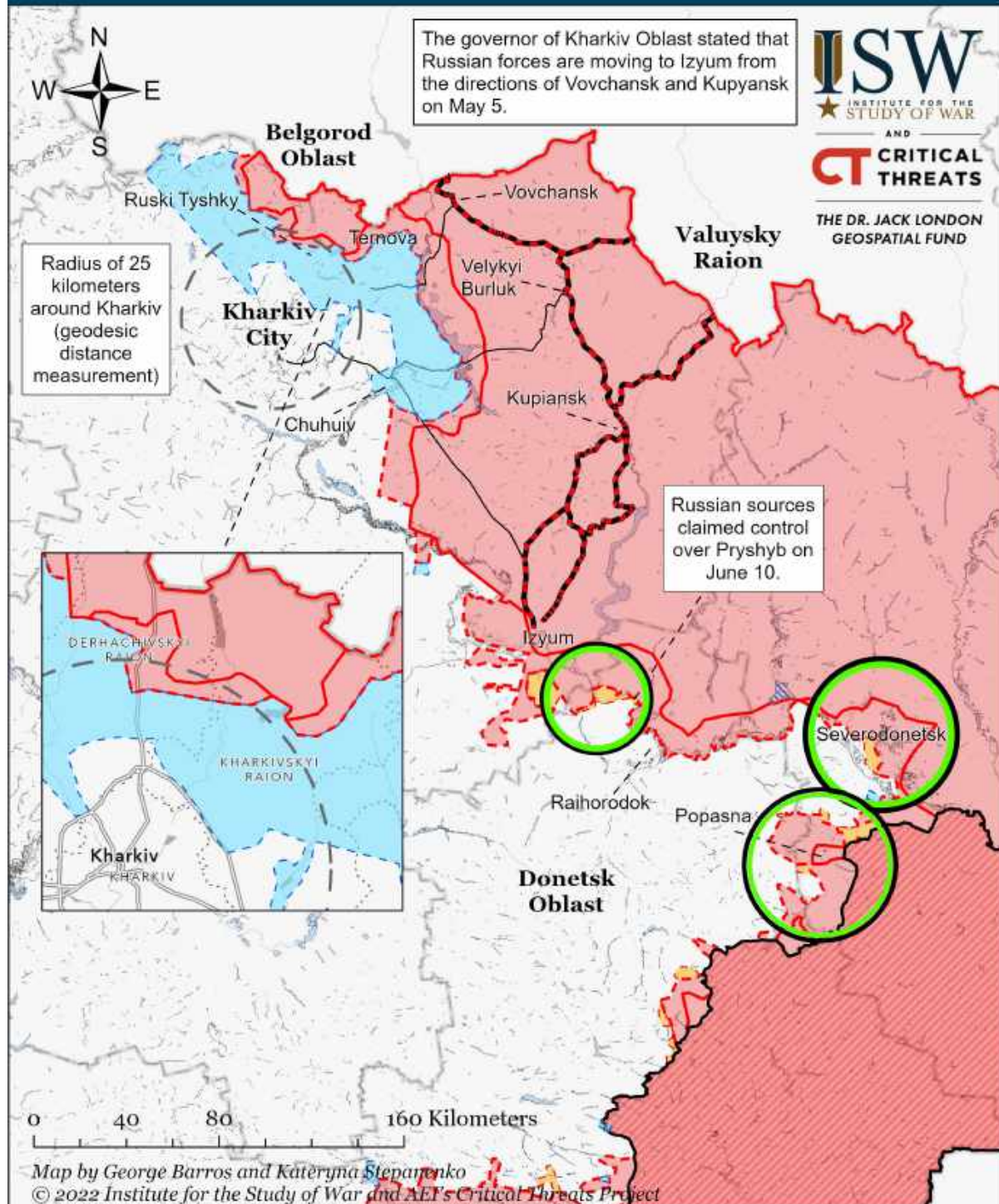
Significant Fighting in the past 24 Hours	Russian-controlled Ukrainian Territory before February 24	Claimed Russian Control over Ukrainian Territory
Key Ukrainian Roads	Assessed Russian Advances in Ukraine*	Claimed Ukrainian Counteroffensives
Russian Ground Lines of Communication	Assessed Russian-controlled Ukrainian Territory	Reported Ukrainian Partisan Warfare

\* Assessed Russian advances are areas where ISW assesses Russian forces have operated in or launched attacks against but do not control.

Note: ISW is unable to verify Russian reports that Ukrainian forces crossed the Pechenihy Reservoir, established positions in Khotomlyia in late May, and are operating on the road spanning Primorskoye - Martovoye - Pershotravnevoye - Khotomlyia as of June 2. We recessed Russian control in this area and recoded it as Russian advances on June 4 but will not advance Ukrainian counteroffensives until we observe corroborating evidence.



# Assessed Control of Terrain Around Kharkiv as of June 10, 2022, 3:00 PM ET



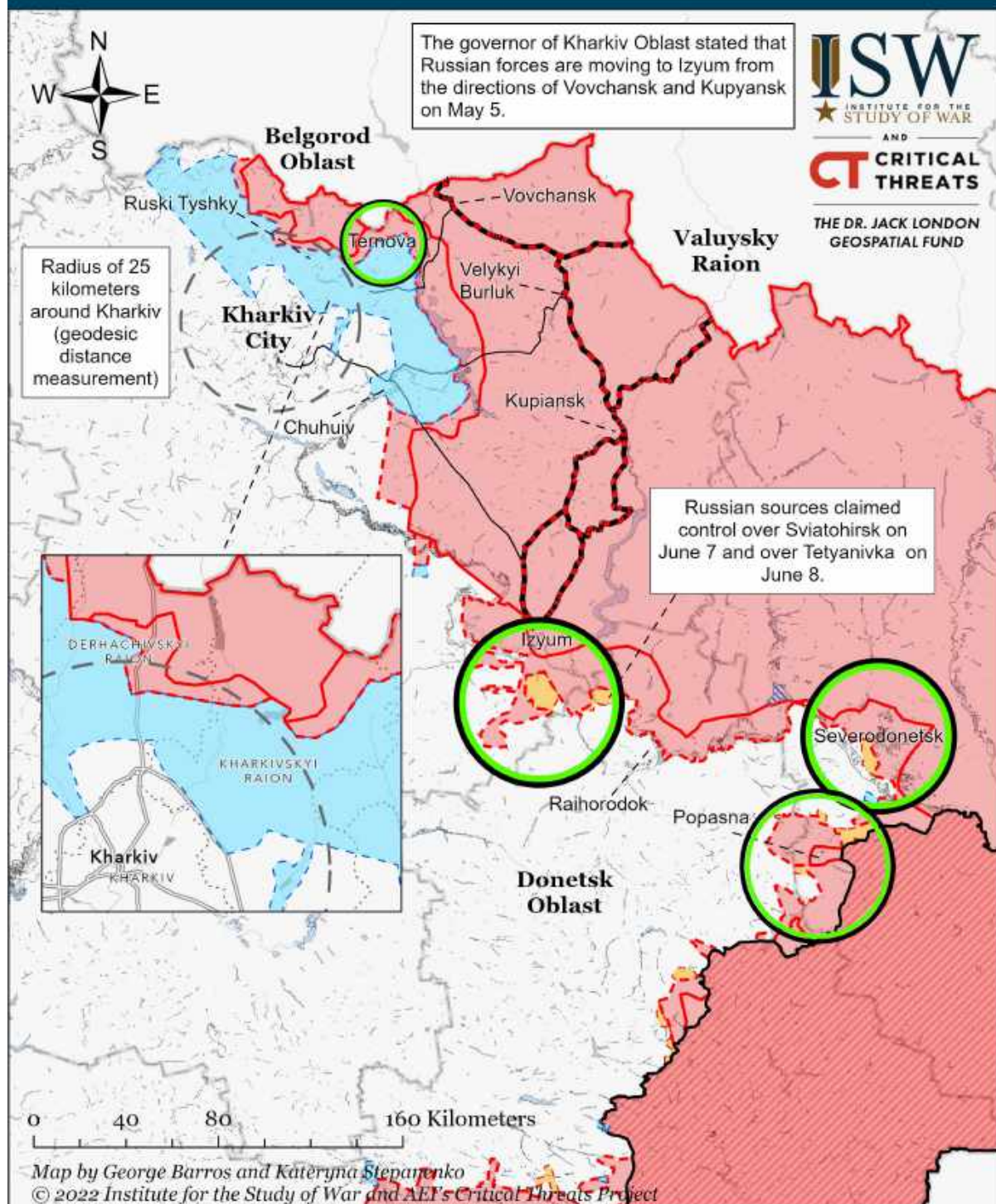
Significant Fighting in the past 24 Hours	Russian-controlled Ukrainian Territory before February 24	Claimed Russian Control over Ukrainian Territory
Key Ukrainian Roads	Assessed Russian Advances in Ukraine*	Claimed Ukrainian Counteroffensives
Russian Ground Lines of Communication	Assessed Russian-controlled Ukrainian Territory	Reported Ukrainian Partisan Warfare

\* Assessed Russian advances are areas where ISW assesses Russian forces have operated in or launched attacks against but do not control.

Note: ISW is unable to verify Russian reports that Ukrainian forces crossed the Pechenihy Reservoir, established positions in Khotomlyia in late May, and are operating on the road spanning Primorskoye - Martovoye - Pershotravnevoye - Khotomlyia as of June 2. We recessed Russian control in this area and recoded it as Russian advances on June 4 but will not advance Ukrainian counteroffensives until we observe corroborating evidence.



# Assessed Control of Terrain Around Kharkiv as of June 9, 2022, 3:00 PM ET



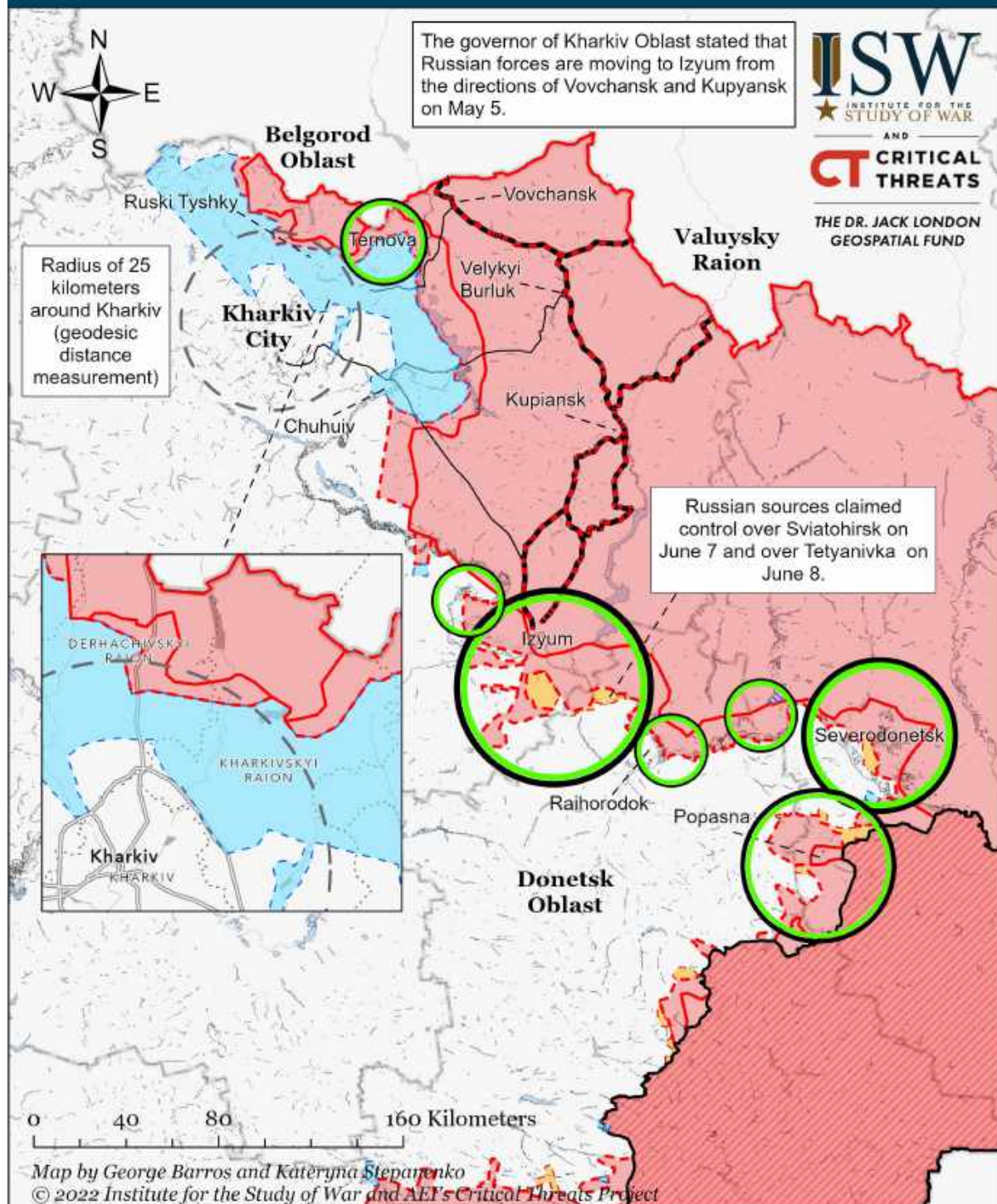
Significant Fighting in the past 24 Hours	Russian-controlled Ukrainian Territory before February 24	Claimed Russian Control over Ukrainian Territory
Key Ukrainian Roads	Assessed Russian Advances in Ukraine*	Claimed Ukrainian Counteroffensives
Russian Ground Lines of Communication	Assessed Russian-controlled Ukrainian Territory	Reported Ukrainian Partisan Warfare

\* Assessed Russian advances are areas where ISW assesses Russian forces have operated in or launched attacks against but do not control.

Note: ISW is unable to verify Russian reports that Ukrainian forces crossed the Pechenihy Reservoir, established positions in Khotomlyia in late May, and are operating on the road spanning Primorskoye - Martovoye - Pershotravnevoye - Khotomlyia as of June 2. We recessed Russian control in this area and recoded it as Russian advances on June 4 but will not advance Ukrainian counteroffensives until we observe corroborating evidence.



# Assessed Control of Terrain Around Kharkiv as of June 8, 2022, 3:00 PM ET



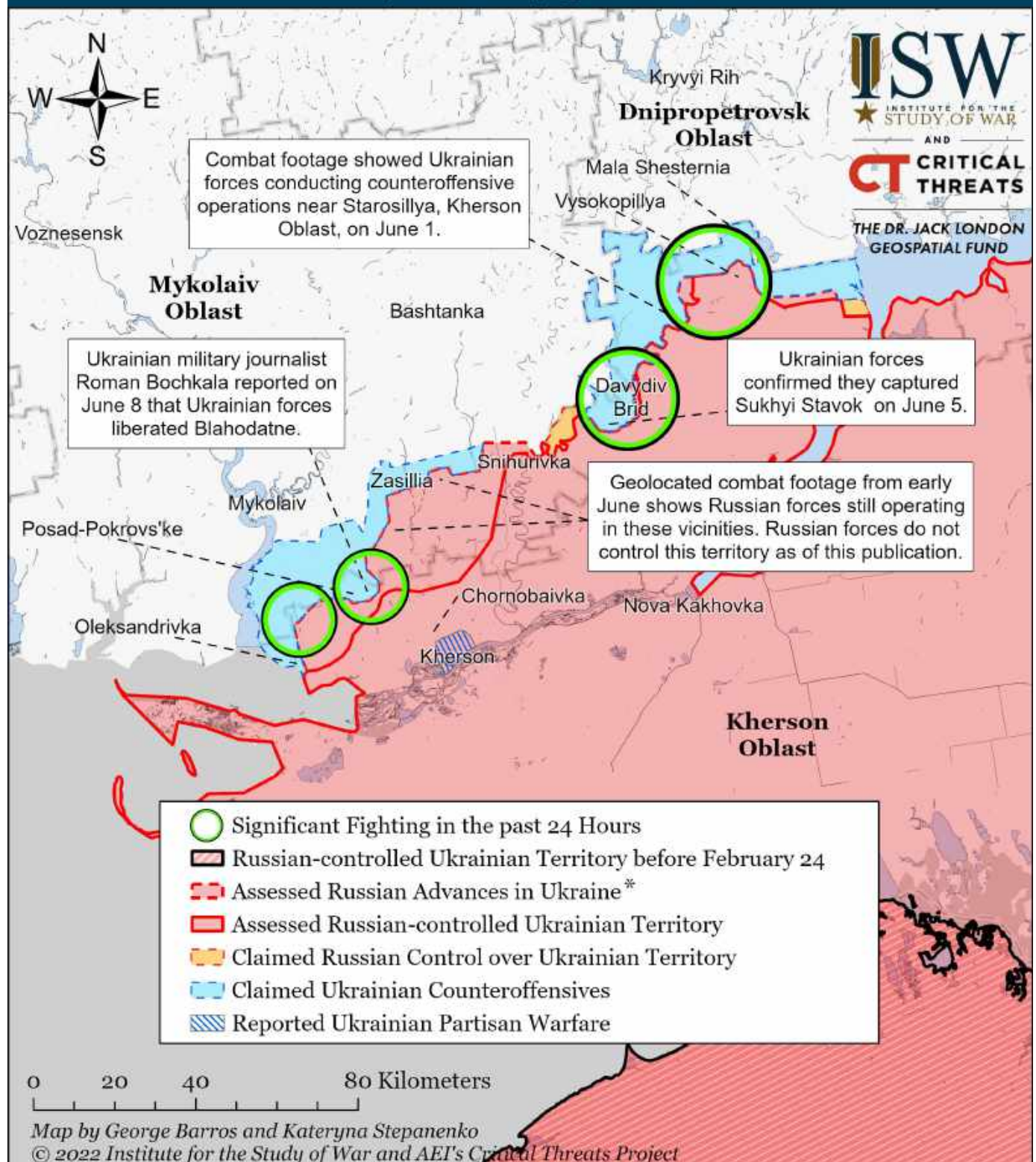
Significant Fighting in the past 24 Hours	Russian-controlled Ukrainian Territory before February 24	Claimed Russian Control over Ukrainian Territory
Key Ukrainian Roads	Assessed Russian Advances in Ukraine*	Claimed Ukrainian Counteroffensives
Russian Ground Lines of Communication	Assessed Russian-controlled Ukrainian Territory	Reported Ukrainian Partisan Warfare

\* Assessed Russian advances are areas where ISW assesses Russian forces have operated in or launched attacks against but do not control.

Note: ISW is unable to verify Russian reports that Ukrainian forces crossed the Pechenihy Reservoir, established positions in Khotomlyia in late May, and are operating on the road spanning Primorskoye - Martovoye - Pershotravnevoye - Khotomlyia as of June 2. We recessed Russian control in this area and recoded it as Russian advances on June 4 but will not advance Ukrainian counteroffensives until we observe corroborating evidence.



# Assessed Control of Terrain Around Kherson and Mykolaiv as of June 12, 2022, 3:00 PM ET

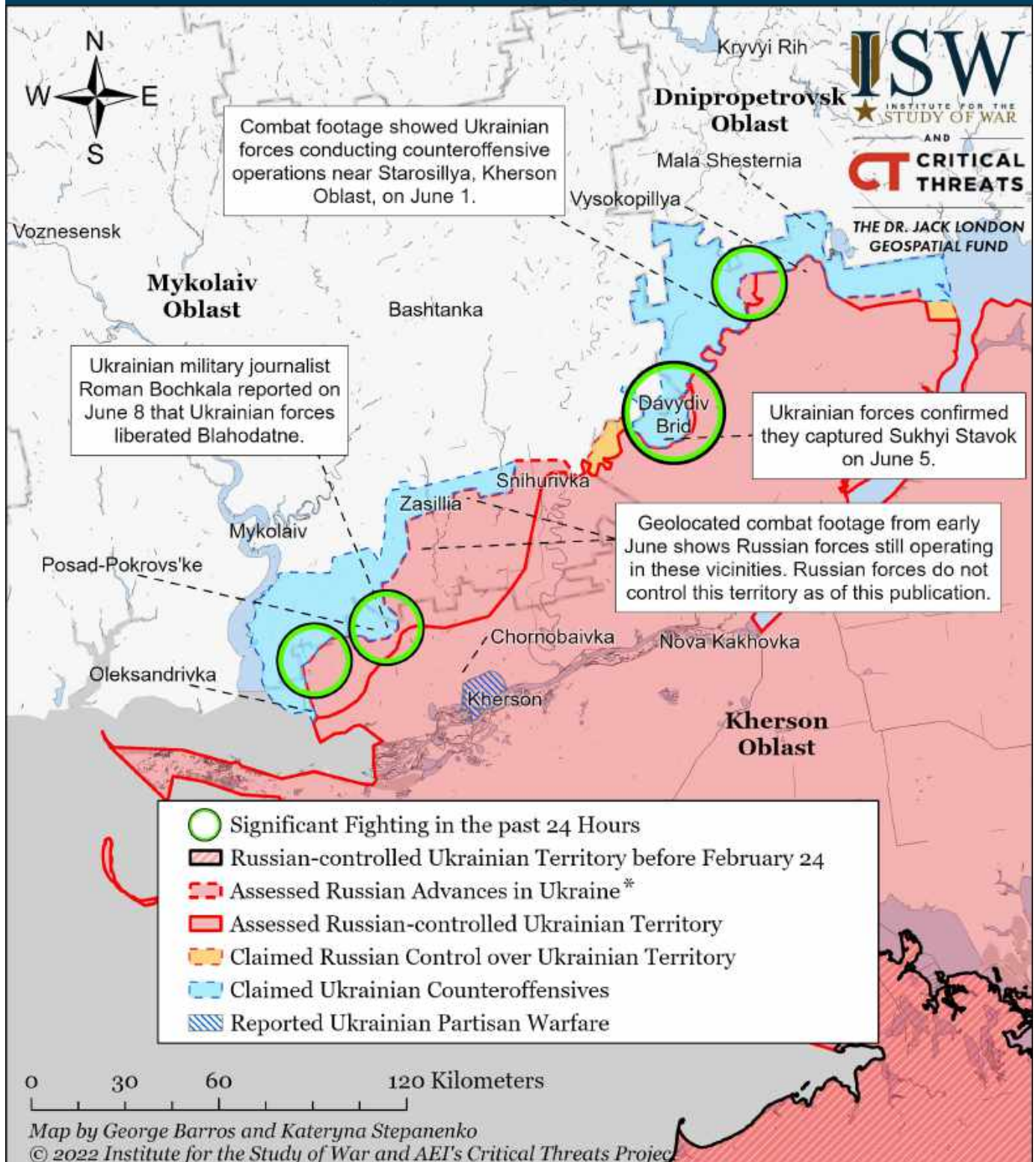


\* Assessed Russian advances are areas where ISW assesses Russian forces have operated in or launched attacks against but do not control.

Note: ISW is unable to independently verify current conflicting reports about the status of the Ukrainian bridgehead near Davydov Brid as of June 10. The Ukrainian General Staff noted on June 9 that Ukrainian forces conducted a successful counteroffensive resulting in high Russian losses, but did not specify the location or timing of the counteroffensive. The UK Ministry of Defense claimed on June 8 that Ukrainian forces have "recently achieved some success" in counterattacks in southwest Kherson Oblast, including gaining a foothold on the eastern bank of the Inhulets River as of June 8. Combat footage observed on June 10 and 11 indicate that Ukrainian forces established positions near Lozove and likely maintain positions in Bila Krynytsia. We will update our maps as we collect and confirm more information.



# Assessed Control of Terrain Around Kherson and Mykolaiv as of June 11, 2022, 3:00 PM ET

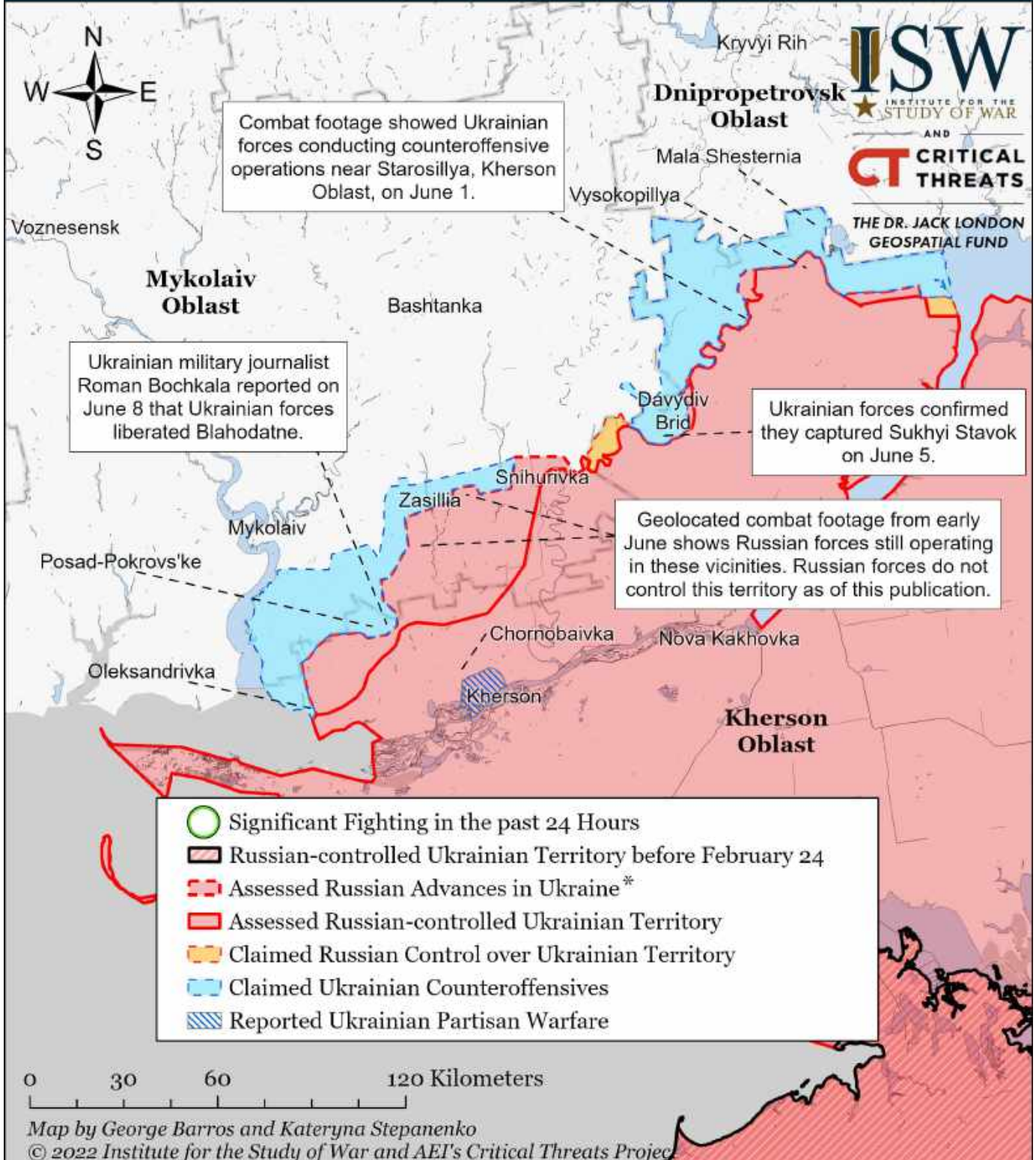


\* Assessed Russian advances are areas where ISW assesses Russian forces have operated in or launched attacks against but do not control.

Note: ISW is unable to independently verify current conflicting reports about the status of the Ukrainian bridgehead near Davydov Brid as of June 10. The Ukrainian General Staff noted on June 9 that Ukrainian forces conducted a successful counteroffensive resulting in high Russian losses, but did not specify the location or timing of the counteroffensive. The UK Ministry of Defense claimed on June 8 that Ukrainian forces have "recently achieved some success" in counterattacks in southwest Kherson Oblast, including gaining a foothold on the eastern bank of the Inhulets River as of June 8. Combat footage observed on June 10 and 11 indicate that Ukrainian forces established positions near Lozove and likely maintain positions in Bila Krynytsia. We will update our maps as we collect and confirm more information.



# Assessed Control of Terrain Around Kherson and Mykolaiv as of June 10, 2022, 3:00 PM ET

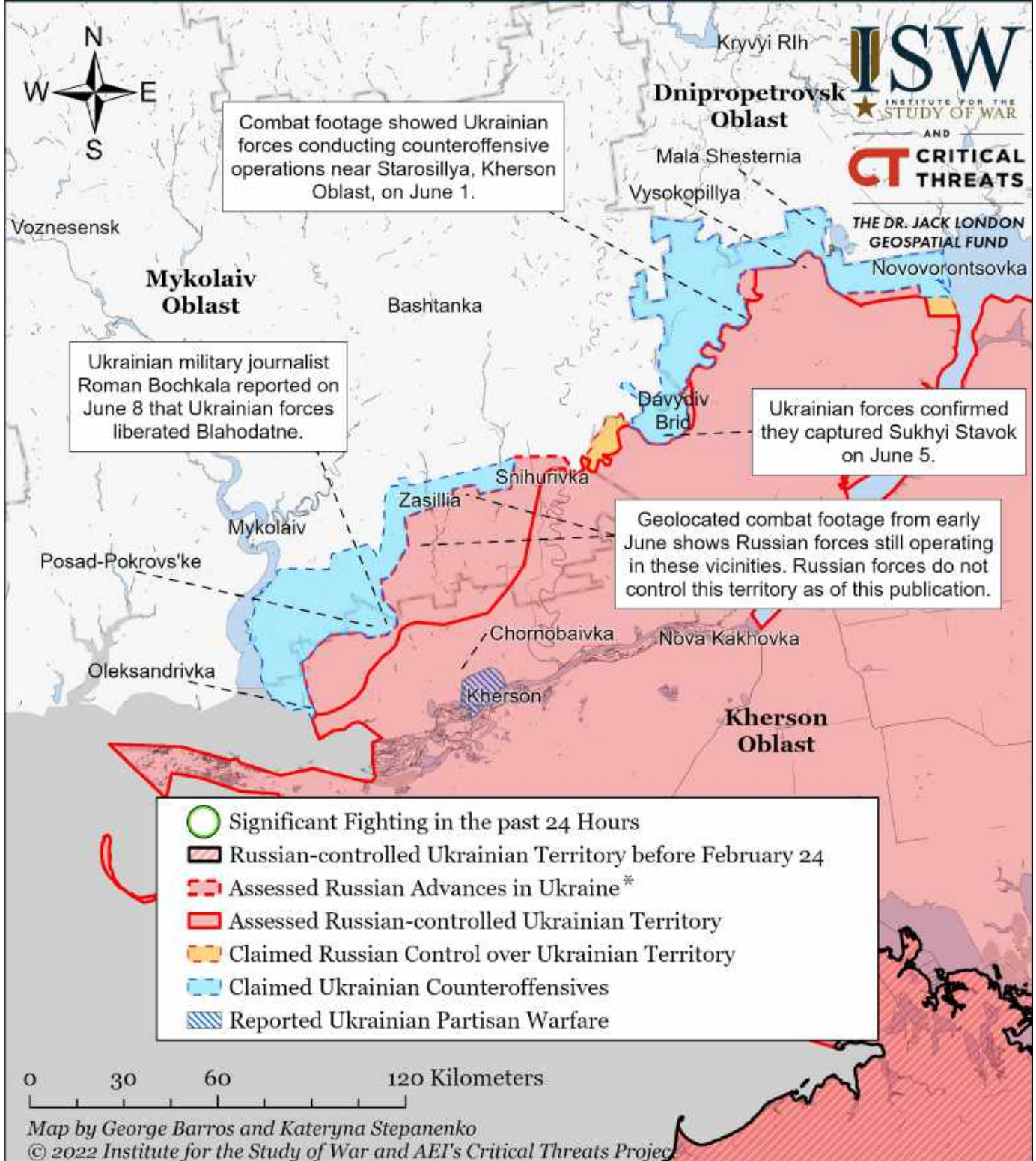


\* Assessed Russian advances are areas where ISW assesses Russian forces have operated in or launched attacks against but do not control.

Note: ISW is unable to independently verify current conflicting reports about the status of the Ukrainian bridgehead near Davydov Brid as of June 10. The Ukrainian General Staff noted on June 9 that Ukrainian forces conducted a successful counteroffensive resulting in high Russian losses, but did not specify the location or timing of the counteroffensive. The UK Ministry of Defense claimed on June 8 that Ukrainian forces have "recently achieved some success" in counterattacks in southwest Kherson Oblast, including gaining a foothold on the eastern bank of the Inhulets River as of June 8. We will update our maps as we collect and confirm more information.



# Assessed Control of Terrain Around Kherson and Mykolaiv as of June 9, 2022, 3:00 PM ET

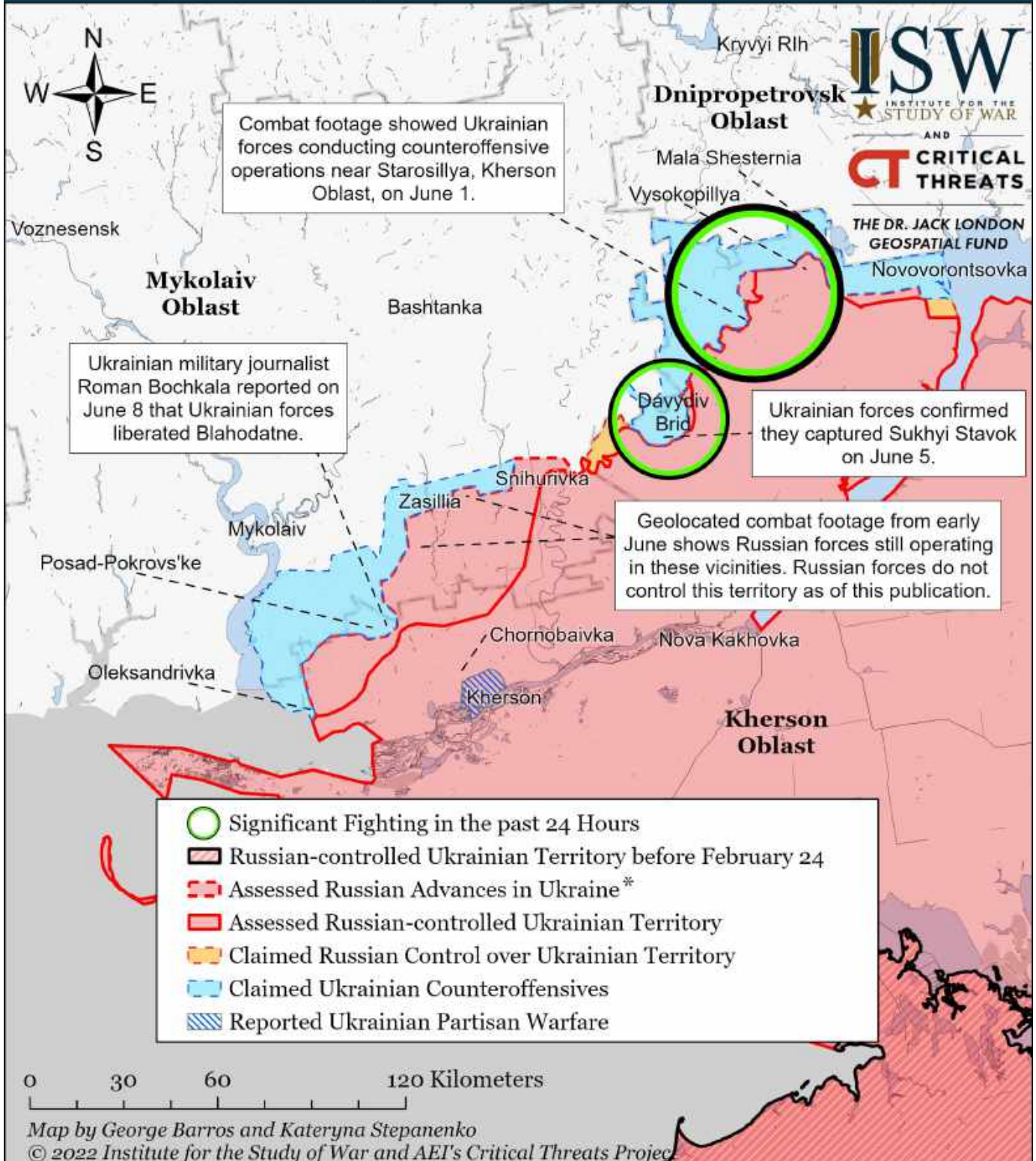


\* Assessed Russian advances are areas where ISW assesses Russian forces have operated in or launched attacks against but do not control.

Note: ISW is unable to independently verify current conflicting reports about the status of the Ukrainian bridgehead near Davydov Brid as of June 9. The Ukrainian General Staff noted on June 9 that Ukrainian forces conducted a successful counteroffensive resulting in high Russian losses, but did not specify the location or timing of the counteroffensive. The UK Ministry of Defense claimed on June 8 that Ukrainian forces have "recently achieved some success" in counterattacks in southwest Kherson Oblast, including gaining a foothold on the eastern bank of the Inhulets River as of June 8. We will update our maps as we collect and confirm more information.



# Assessed Control of Terrain Around Kherson and Mykolaiv as of June 8, 2022, 3:00 PM ET

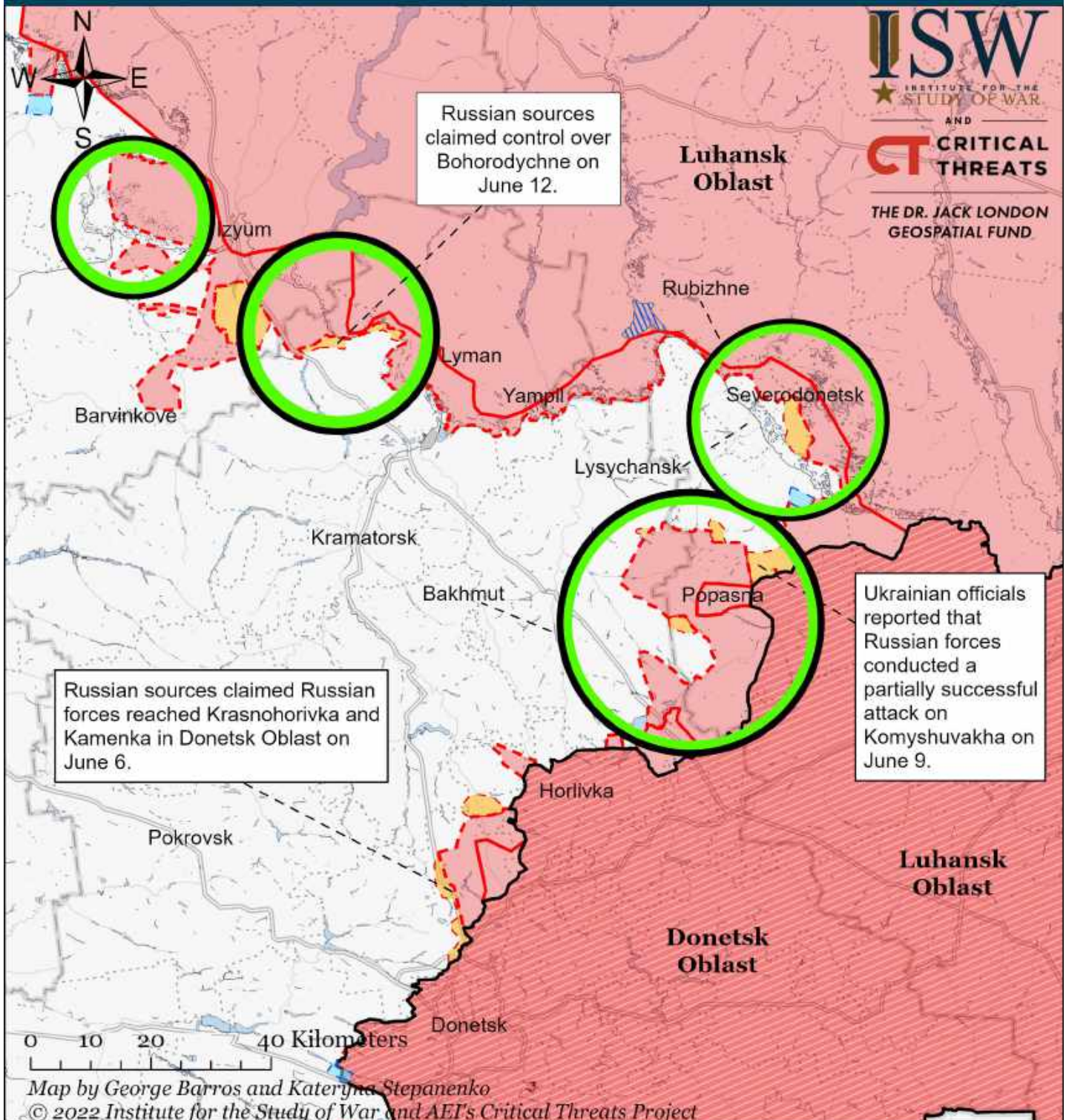


\* Assessed Russian advances are areas where ISW assesses Russian forces have operated in or launched attacks against but do not control.

Note: ISW is unable to independently verify current conflicting reports about the status of the Ukrainian bridgehead near Davydiv Brid as of June 8. The UK Ministry of Defense claimed on June 8 that Ukrainian forces have “recently achieved some success” in counterattacks in southwest Kherson Oblast, including gaining a foothold on the eastern bank of the Inhulets River as of June 8. This contradicted pro-Russian milblogger Telegram channel Swodki’s June 8 claim that Russian forces gained a foothold near Bila Krynytsya and Velyke Artakove, on the western bank of the Inhales River. The UK Ministry of Defense is more credible than Swodki. We will update our maps as we collect and confirm more information.



# Assessed Control of Terrain Around Luhansk as of June 12, 2022, 3:00 PM ET

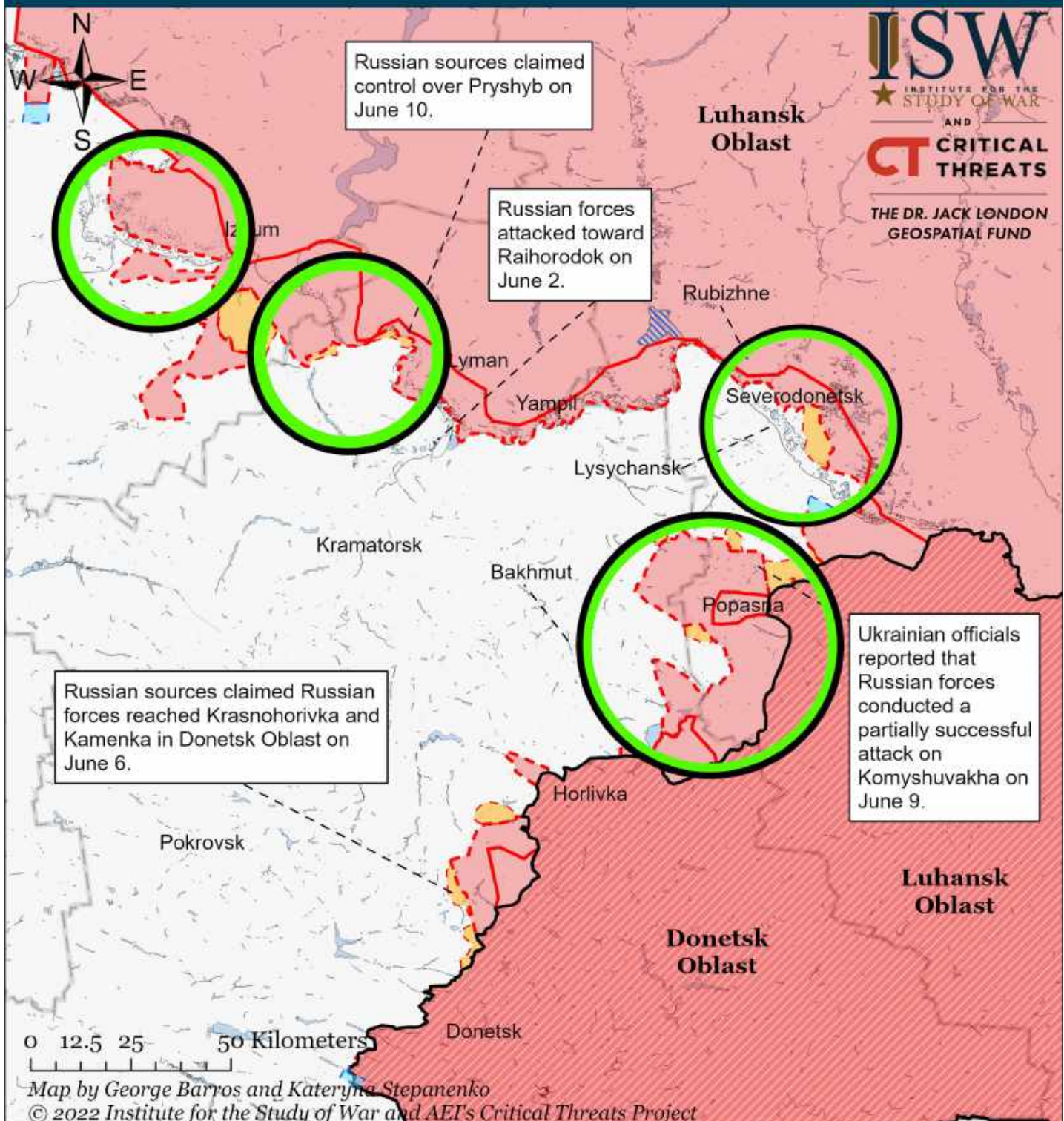


- Significant Fighting in the past 24 Hours
- Assessed Russian-controlled Ukrainian Territory
- ▨ Reported Ukrainian Partisan Warfare
- ▭ Russian-controlled Ukrainian Territory before February 24
- ▭ Claimed Russian Control over Ukrainian Territory
- ▨ Assessed Russian Advances in Ukraine\*
- ▭ Claimed Ukrainian Counteroffensives

\* Assessed Russian advances are areas where ISW assesses Russian forces have operated in or launched attacks against but do not control.



# Assessed Control of Terrain Around Luhansk as of June 11, 2022, 3:00 PM ET

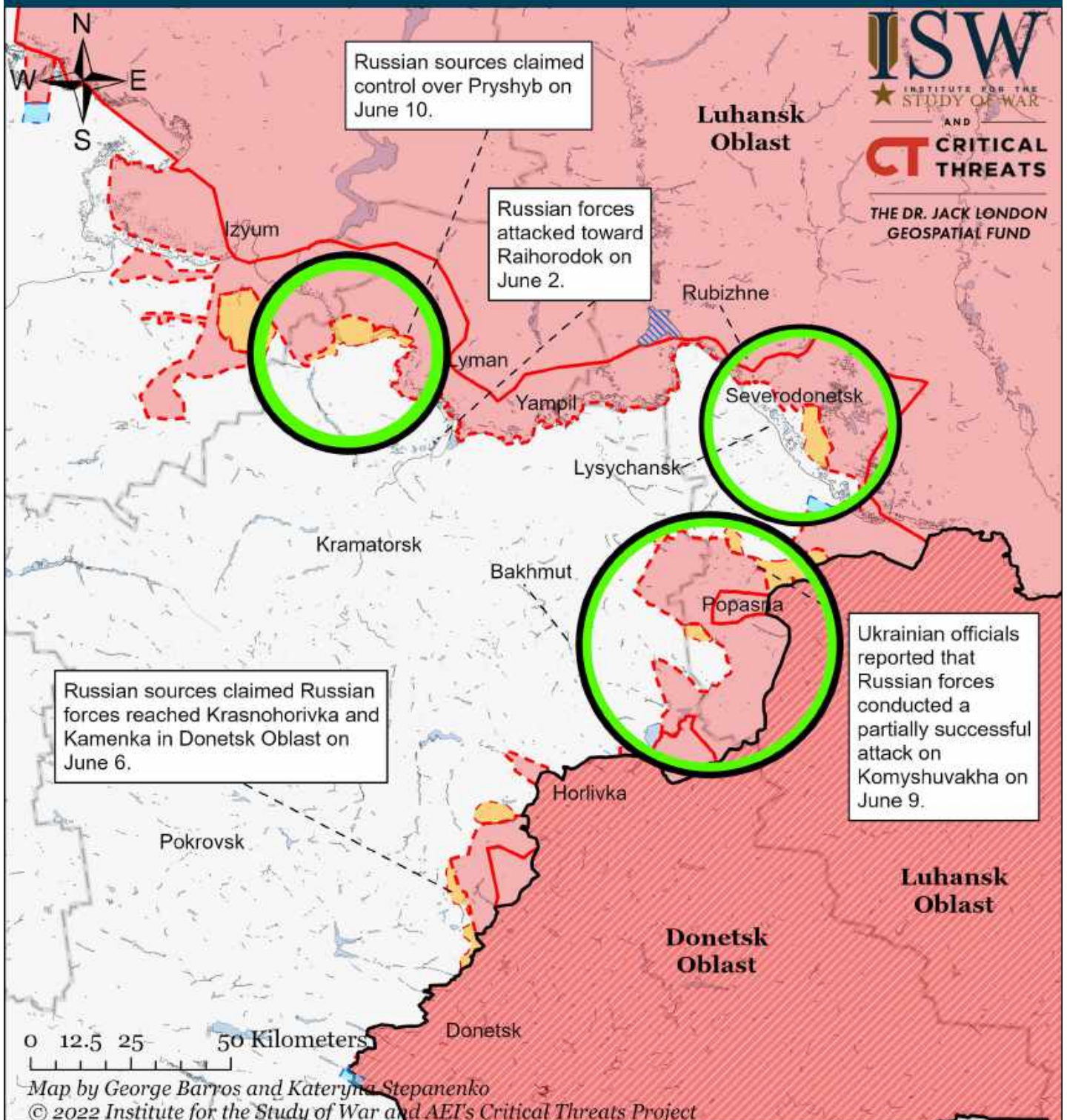


- Significant Fighting in the past 24 Hours
- Assessed Russian-controlled Ukrainian Territory
- Reported Ukrainian Partisan Warfare
- Russian-controlled Ukrainian Territory before February 24
- Claimed Russian Control over Ukrainian Territory
- Assessed Russian Advances in Ukraine\*
- Claimed Ukrainian Counteroffensives

\* Assessed Russian advances are areas where ISW assesses Russian forces have operated in or launched attacks against but do not control.



# Assessed Control of Terrain Around Luhansk as of June 10, 2022, 3:00 PM ET

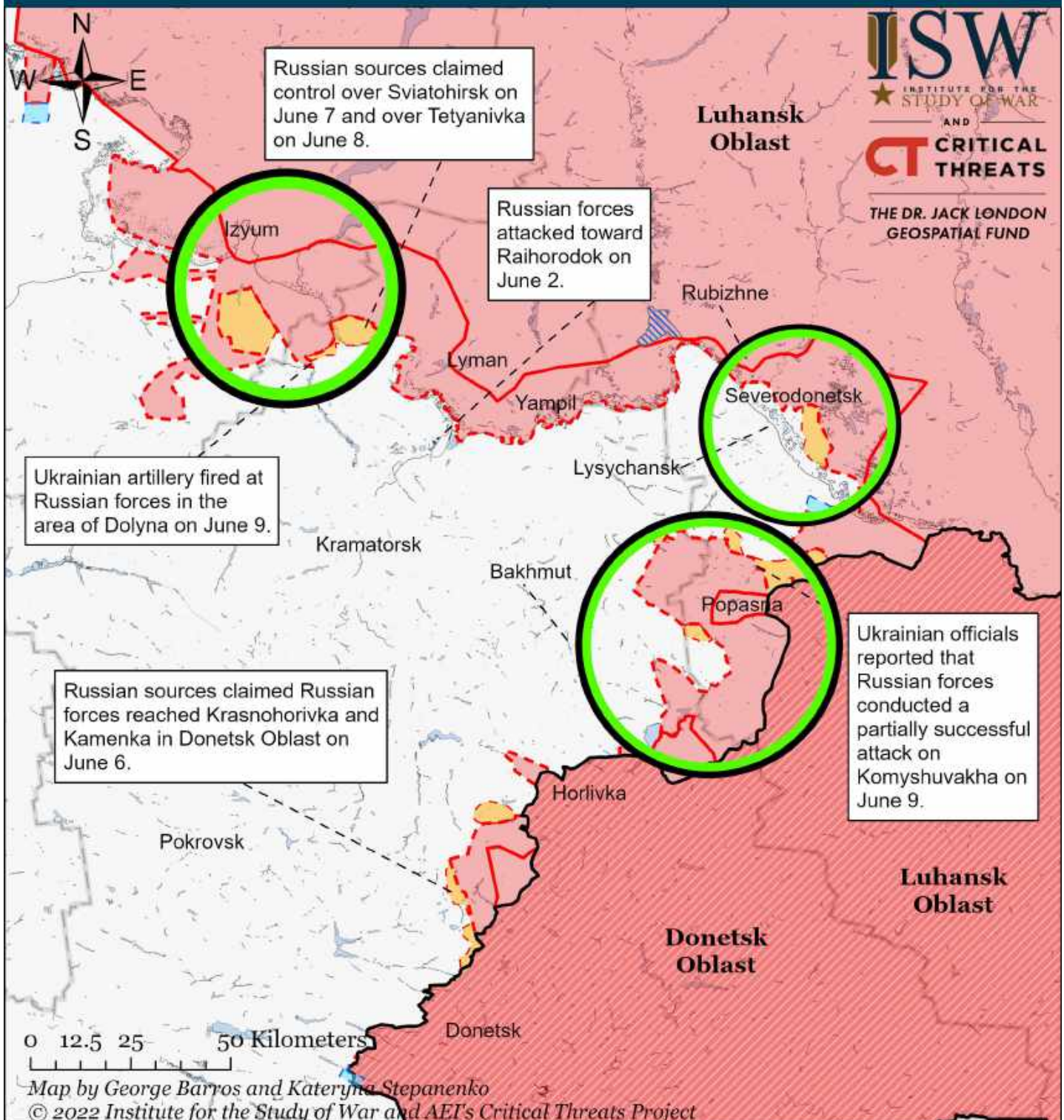


- Significant Fighting in the past 24 Hours
- Assessed Russian-controlled Ukrainian Territory
- Reported Ukrainian Partisan Warfare
- Russian-controlled Ukrainian Territory before February 24
- Claimed Russian Control over Ukrainian Territory
- Assessed Russian Advances in Ukraine\*
- Claimed Ukrainian Counteroffensives

\* Assessed Russian advances are areas where ISW assesses Russian forces have operated in or launched attacks against but do not control.



# Assessed Control of Terrain Around Luhansk as of June 9, 2022, 3:00 PM ET

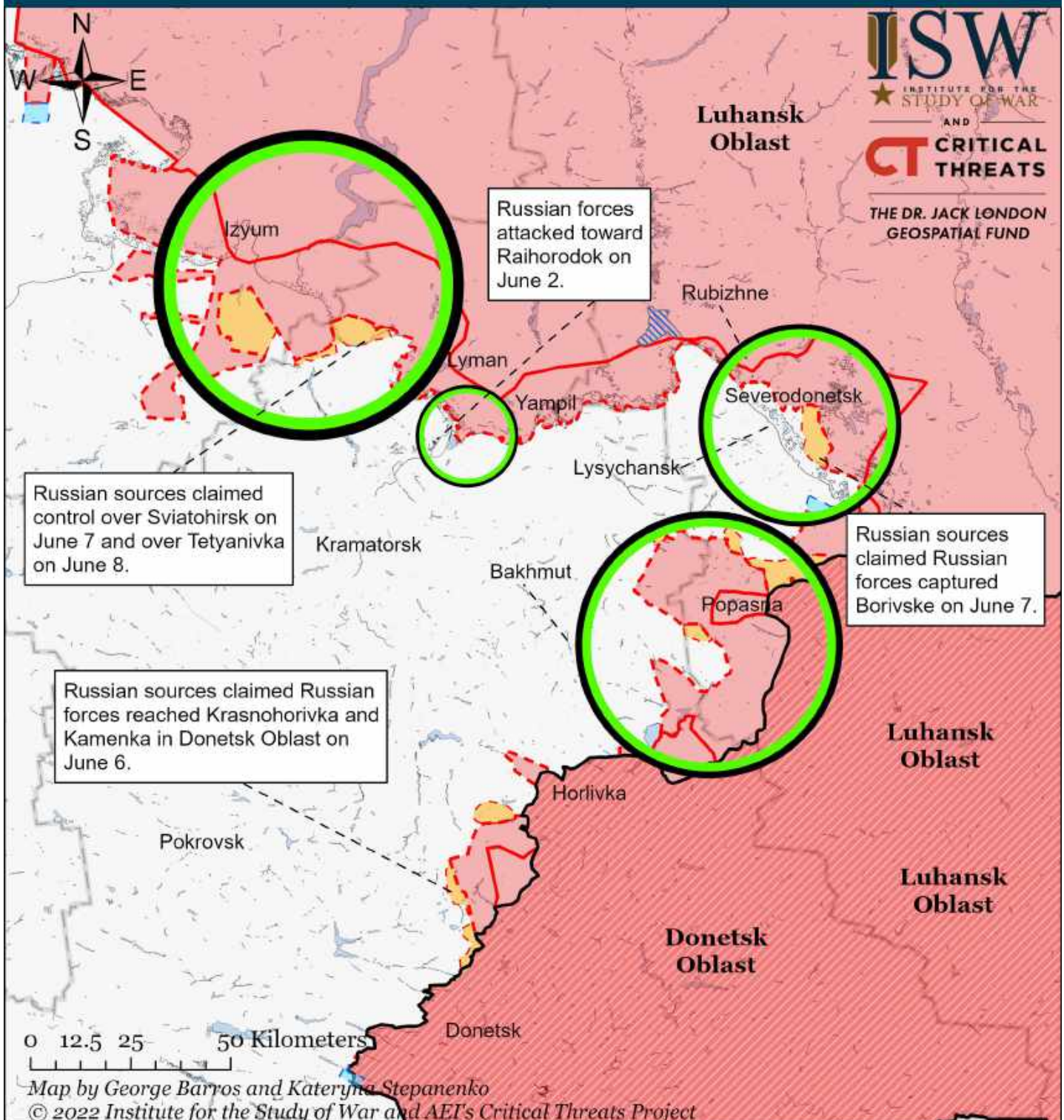


- Significant Fighting in the past 24 Hours
- Assessed Russian-controlled Ukrainian Territory
- Reported Ukrainian Partisan Warfare
- Russian-controlled Ukrainian Territory before February 24
- Claimed Russian Control over Ukrainian Territory
- Assessed Russian Advances in Ukraine\*
- Claimed Ukrainian Counteroffensives

\* Assessed Russian advances are areas where ISW assesses Russian forces have operated in or launched attacks against but do not control.



# Assessed Control of Terrain Around Luhansk as of June 8, 2022, 3:00 PM ET

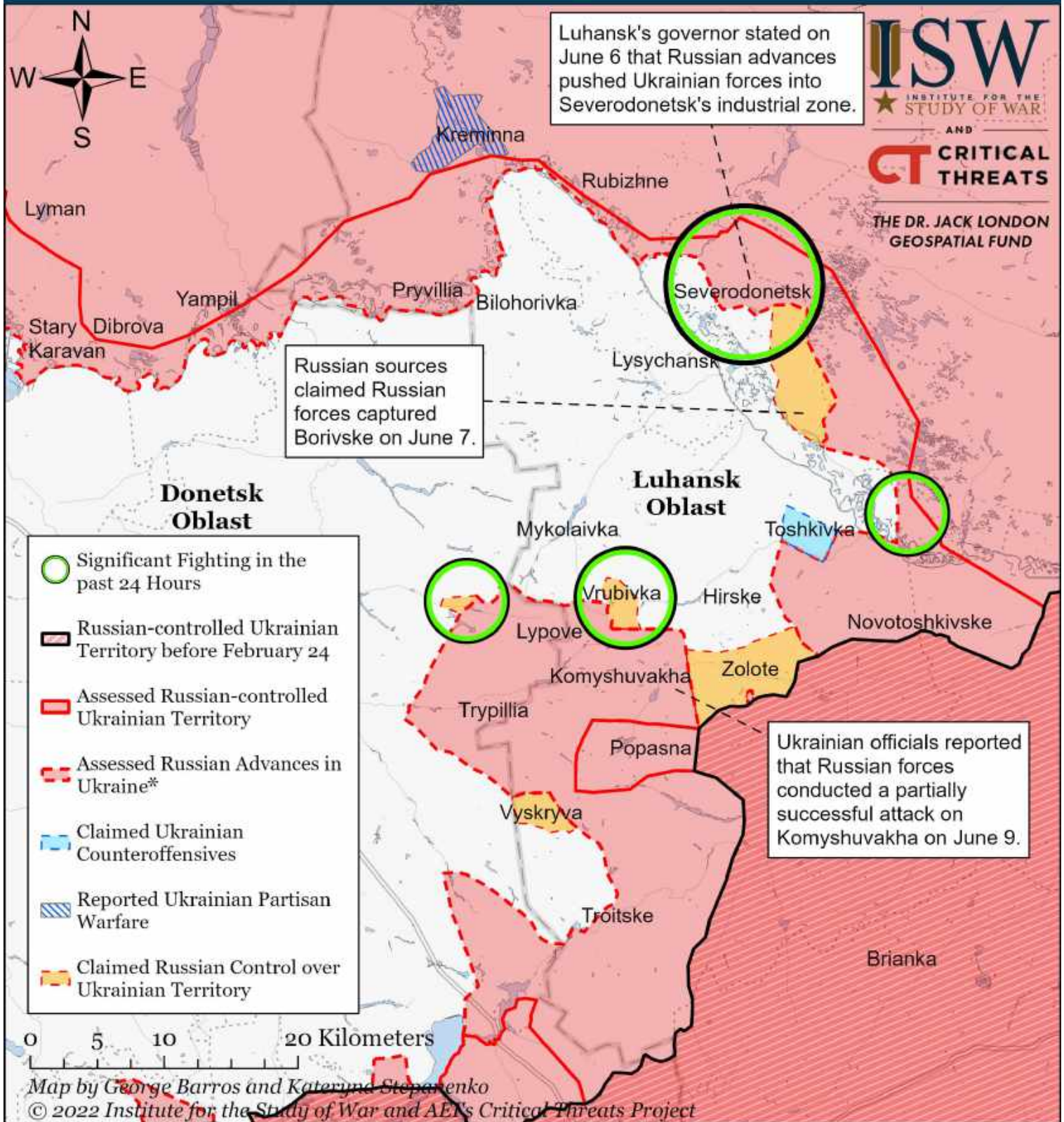


- Significant Fighting in the past 24 Hours
- Assessed Russian-controlled Ukrainian Territory
- ▨ Reported Ukrainian Partisan Warfare
- Russian-controlled Ukrainian Territory before February 24
- Claimed Russian Control over Ukrainian Territory
- ▨ Assessed Russian Advances in Ukraine\*
- Claimed Ukrainian Counteroffensives

\* Assessed Russian advances are areas where ISW assesses Russian forces have operated in or launched attacks against but do not control.



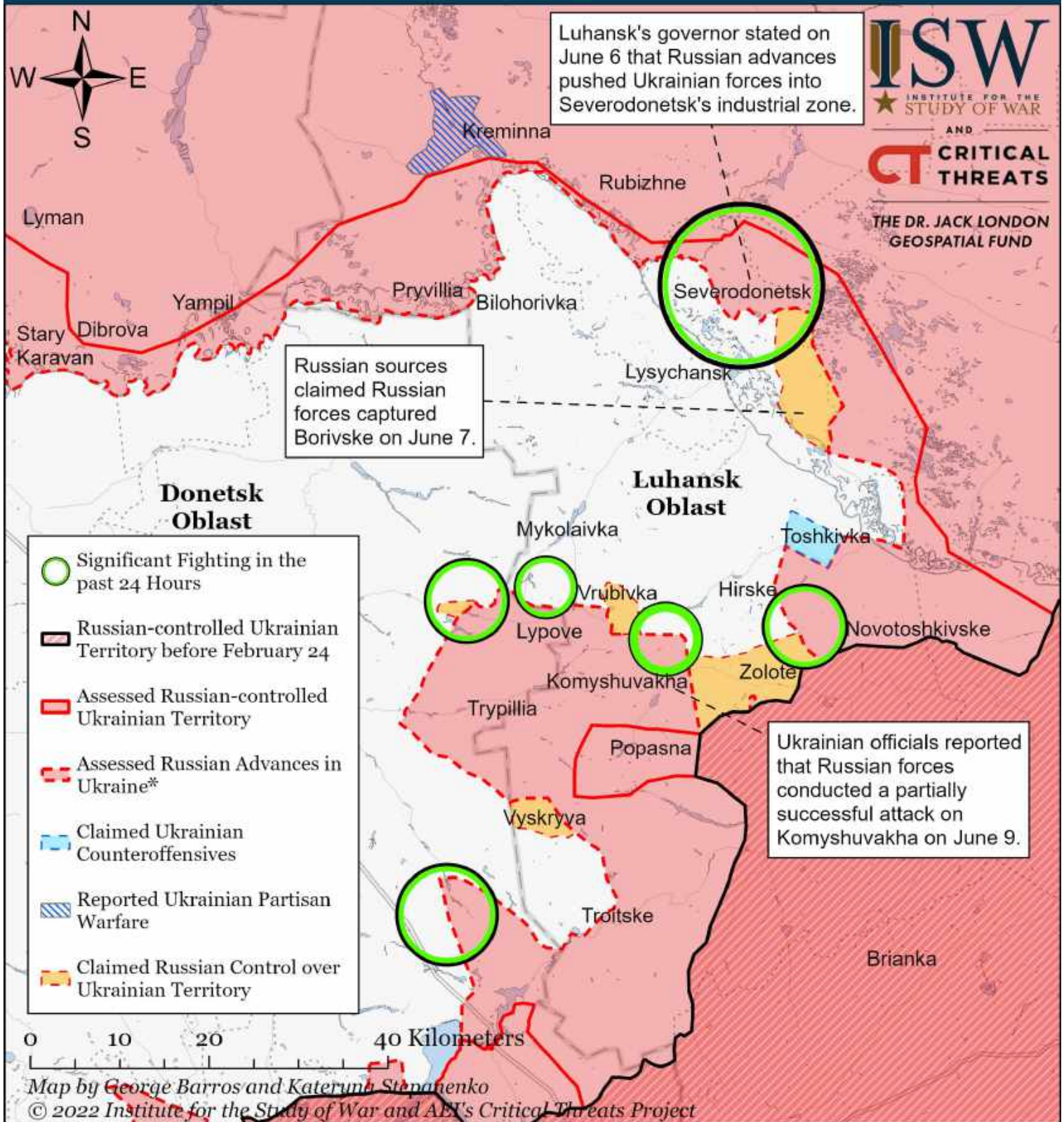
# Assessed Control of Terrain Around Severodonetsk as of June 12, 2022, 3:00 PM ET



\* Assessed Russian advances are areas where ISW assesses Russian forces have operated in or launched attacks against but do not control.



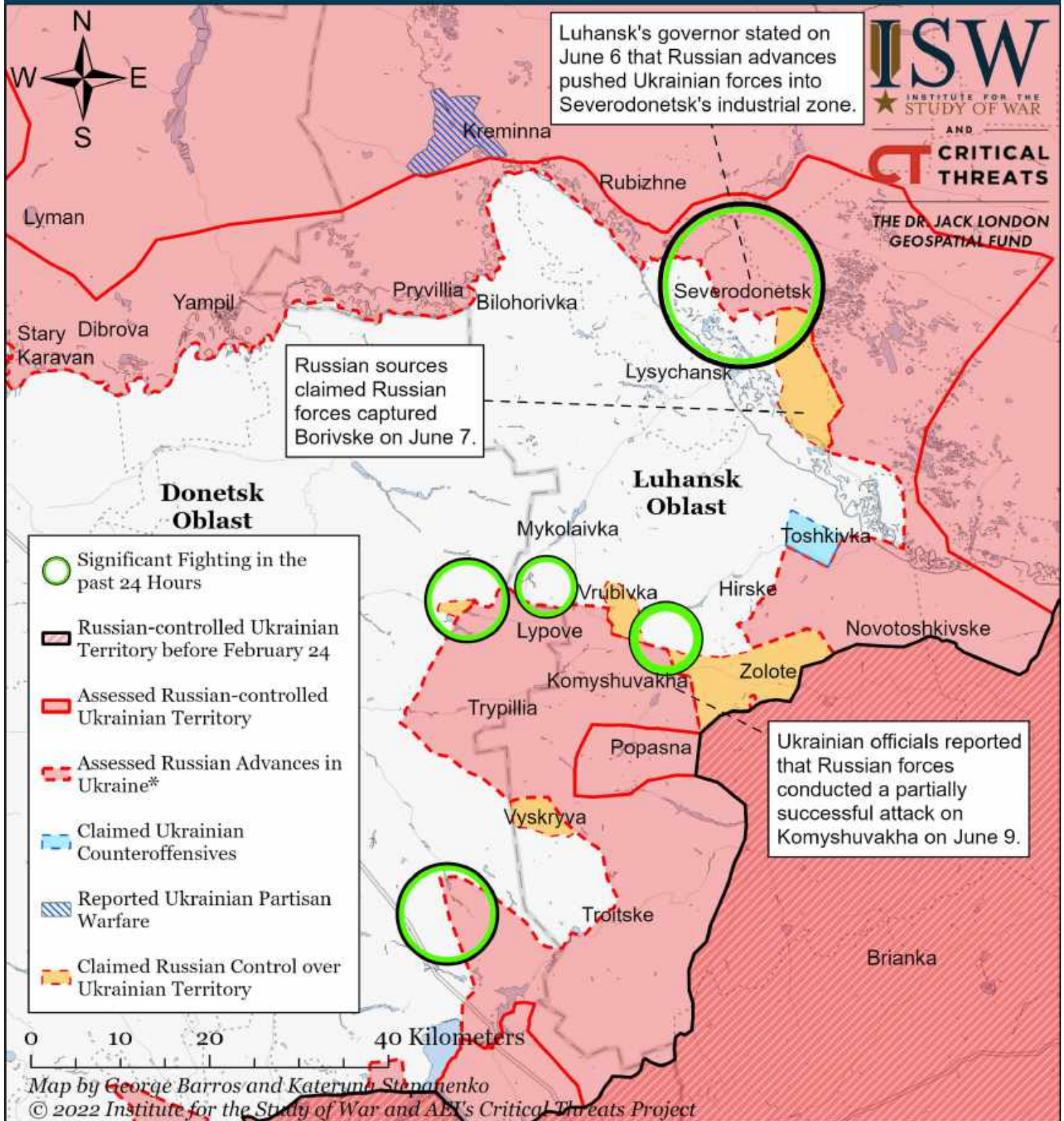
# Assessed Control of Terrain Around Severodonetsk as of June 11, 2022, 3:00 PM ET



\* Assessed Russian advances are areas where ISW assesses Russian forces have operated in or launched attacks against but do not control.



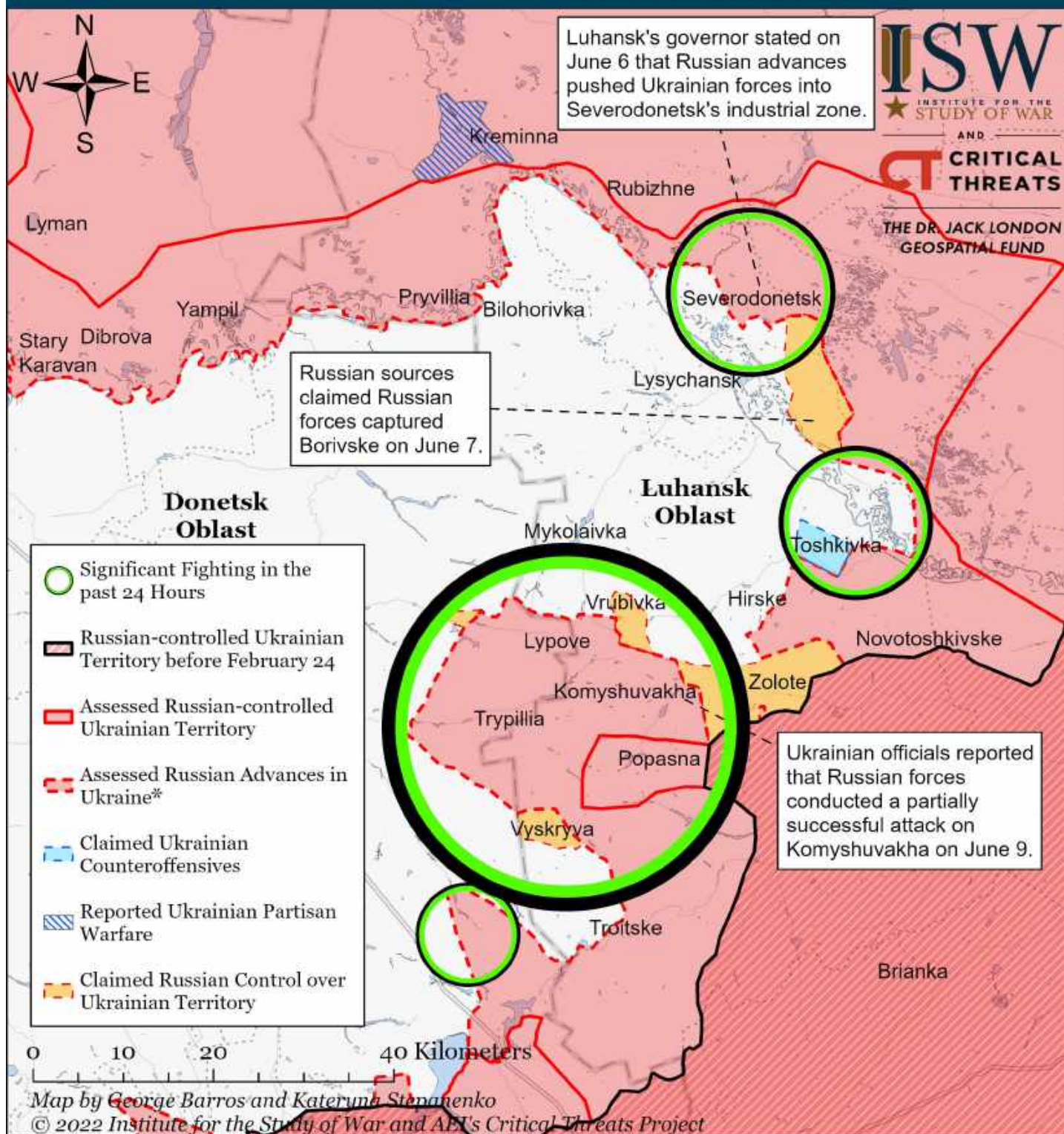
# Assessed Control of Terrain Around Severodonetsk as of June 10, 2022, 3:00 PM ET



\* Assessed Russian advances are areas where ISW assesses Russian forces have operated in or launched attacks against but do not control.



# Assessed Control of Terrain Around Severodonetsk as of June 9, 2022, 3:00 PM ET

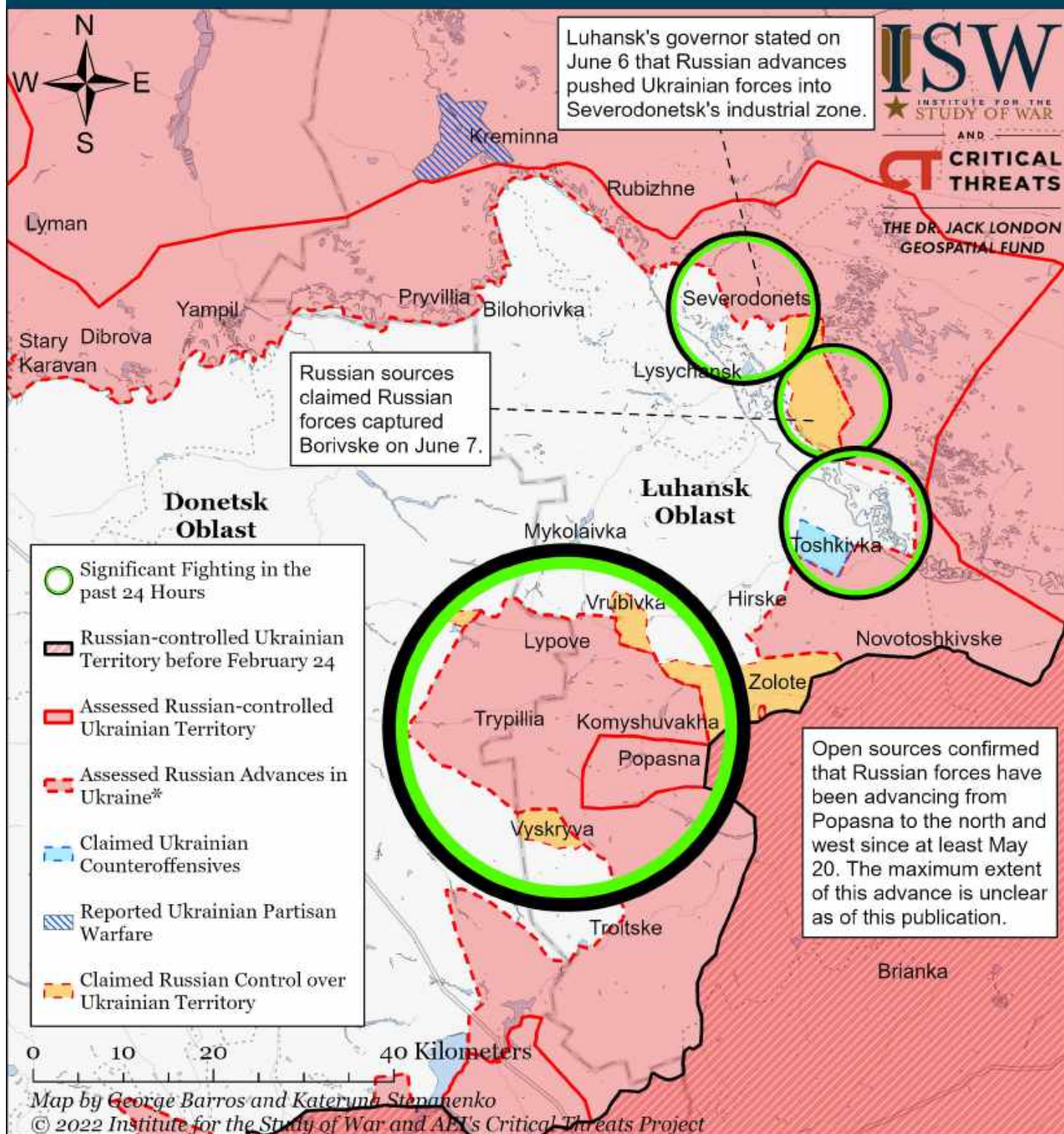


\* Assessed Russian advances are areas where ISW assesses Russian forces have operated in or launched attacks against but do not control.

Note: We scaled back Russian assessed advances in Orihove, just northeast of Zolote based on Luhansk Oblast Administration Head Serhiy Haidai's report that Russian forces shelled the settlement on June 9. We have also partially extended Russian assessed advances in Komyshevakhka based on the Ukrainian General Staff report that Russian forces conducted a partially successful attack on Komyshevakhka on June 9. ISW will adjust our maps when open sources confirm the areas of Russian advances in Komyshevakhka. Haidai also noted that Ukrainian forces continue to control territory around the Azot Chemical Plant in Severodonetsk as of June 9.



# Assessed Control of Terrain Around Severodonetsk as of June 8, 2022, 3:00 PM ET



\* Assessed Russian advances are areas where ISW assesses Russian forces have operated in or launched attacks against but do not control.

Note: We expanded Russian claims to the Severodonetsk airport located at 48°54.0584' 38°32.5869' given the Luhansk People's Republic Ambassador to Russia Rodion Miroshnik claimed on June 8 that Russian forces took control of the Severodonetsk airport. He also claimed that Ukrainian formations retain control over only a small part of the Severodonetsk Azot chemical plant. We are unable to verify these claims at this time.