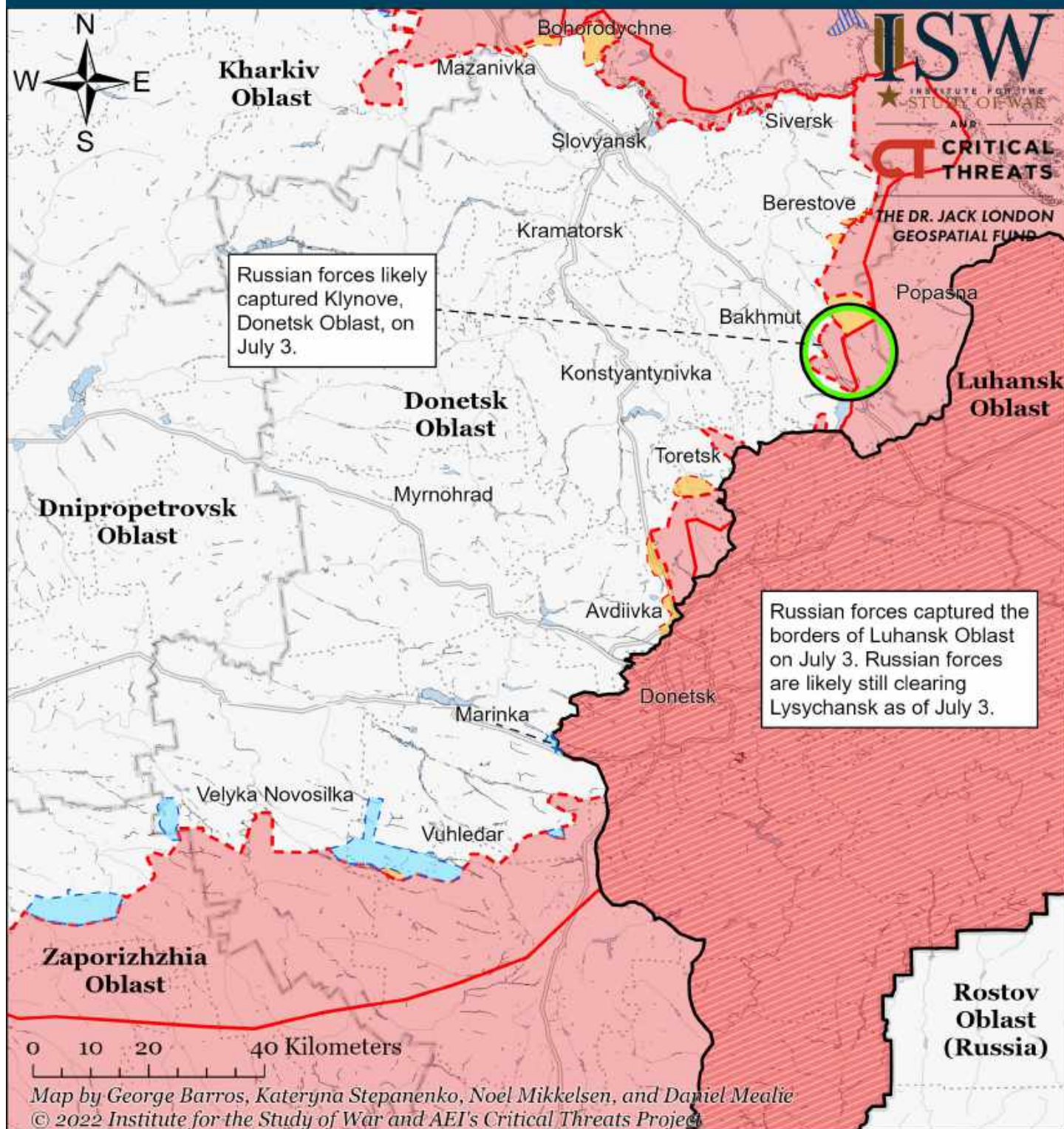


# Assessed Control of Terrain Around Donetsk as of July 3, 2022, 3:00 PM ET



- |   |  |                                     |
|---|--|-------------------------------------|
| Significant Fighting in the past 24 Hours                 | Assessed Russian-controlled Ukrainian Territory  | Reported Ukrainian Partisan Warfare |
| Russian-controlled Ukrainian Territory before February 24 | Claimed Russian Control over Ukrainian Territory |                                     |
| Assessed Russian Advances in Ukraine*                     | Claimed Ukrainian Counteroffensives              |                                     |

\* Assessed Russian advances are areas where ISW assesses Russian forces have operated in or launched attacks against but do not control.



# Assessed Control of Terrain in Ukraine and Main Russian Maneuver Axes as of July 3, 2022, 3:00 PM ET



Map by George Barros, Kateryna Stepanenko, Noel Mikkelsen, and Daniel Mealie  
© 2022 Institute for the Study of War and AEI's Critical Threats Project

\* Assessed Russian advances are areas where ISW assesses Russian forces have operated in or launched attacks against but do not control.

# Assessed Control of Terrain in Ukraine and Main Russian Maneuver Axes as of July 2, 2022, 3:00 PM ET



Map by George Barros, Kateryna Stepanenko, Noel Mikkelsen, and Daniel Mealie  
© 2022 Institute for the Study of War and AEI's Critical Threats Project

\* Assessed Russian advances are areas where ISW assesses Russian forces have operated in or launched attacks against but do not control.



# Assessed Control of Terrain in Ukraine and Main Russian Maneuver Axes as of July 1, 2022, 3:00 PM ET



Map by George Barros, Kateryna Stepanenko, Noel Mikkelsen, and Daniel Mealie  
© 2022 Institute for the Study of War and AEI's Critical Threats Project

\* Assessed Russian advances are areas where ISW assesses Russian forces have operated in or launched attacks against but do not control.

# Assessed Control of Terrain in Ukraine and Main Russian Maneuver Axes as of June 30, 2022, 3:00 PM ET



Map by George Barros, Kateryna Stepanenko, Noel Mikkelsen, and Daniel Mealie  
© 2022 Institute for the Study of War and AEI's Critical Threats Project

\* Assessed Russian advances are areas where ISW assesses Russian forces have operated in or launched attacks against but do not control.



# Assessed Control of Terrain in Ukraine and Main Russian Maneuver Axes as of June 29, 2022, 3:00 PM ET



Map by George Barros, Kateryna Stepanenko, Noel Mikkelsen, and Daniel Mealie  
© 2022 Institute for the Study of War and AEI's Critical Threats Project

\* Assessed Russian advances are areas where ISW assesses Russian forces have operated in or launched attacks against but do not control.

# Assessed Control of Terrain in Ukraine and Main Russian Maneuver Axes as of June 28, 2022, 3:00 PM ET

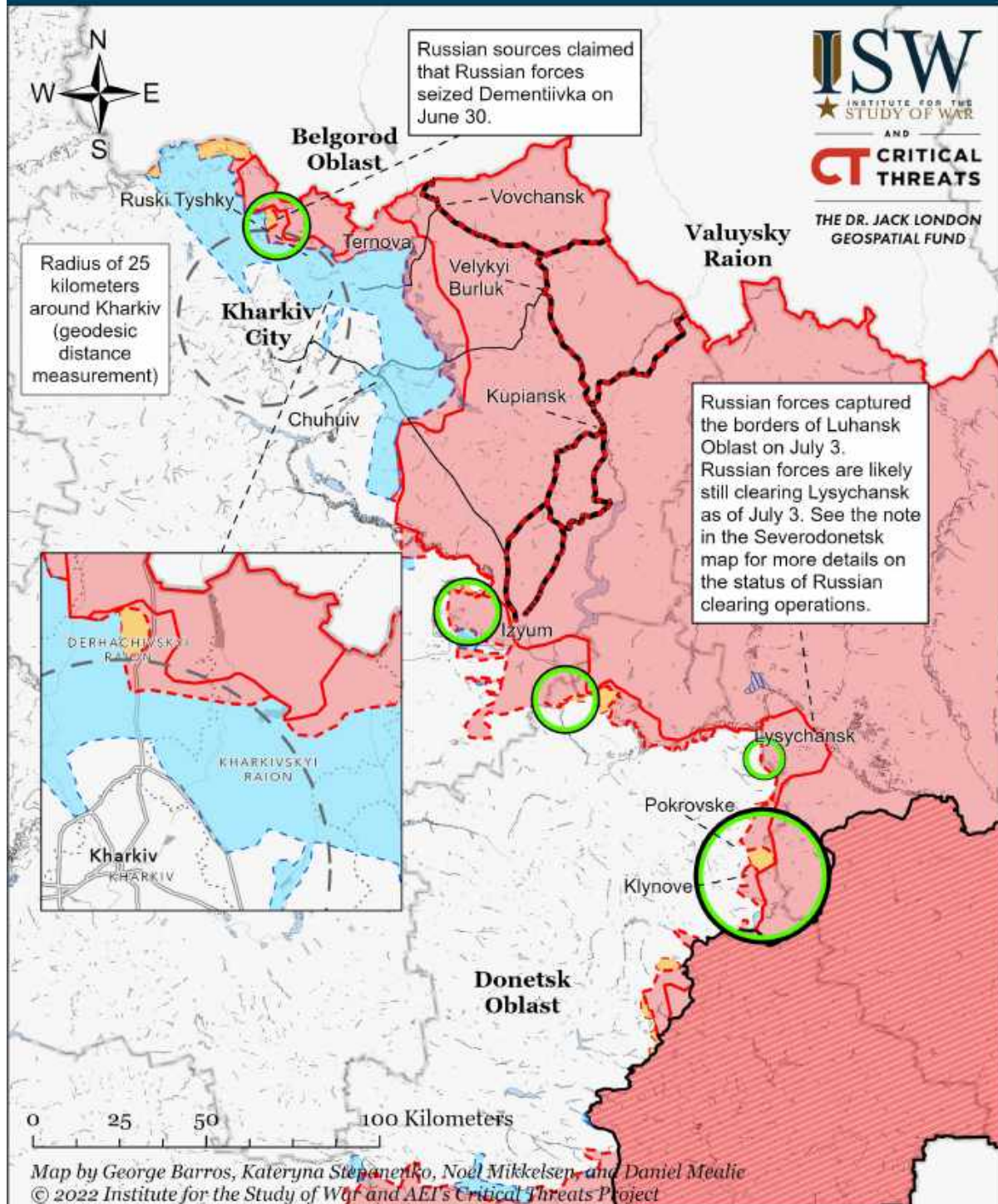


Map by George Barros, Kateryna Stepanenko, Noel Mikkelsen, and Daniel Mealie  
© 2022 Institute for the Study of War and AEI's Critical Threats Project

\* Assessed Russian advances are areas where ISW assesses Russian forces have operated in or launched attacks against but do not control.



# Assessed Control of Terrain Around Kharkiv as of July 3, 2022, 3:00 PM ET



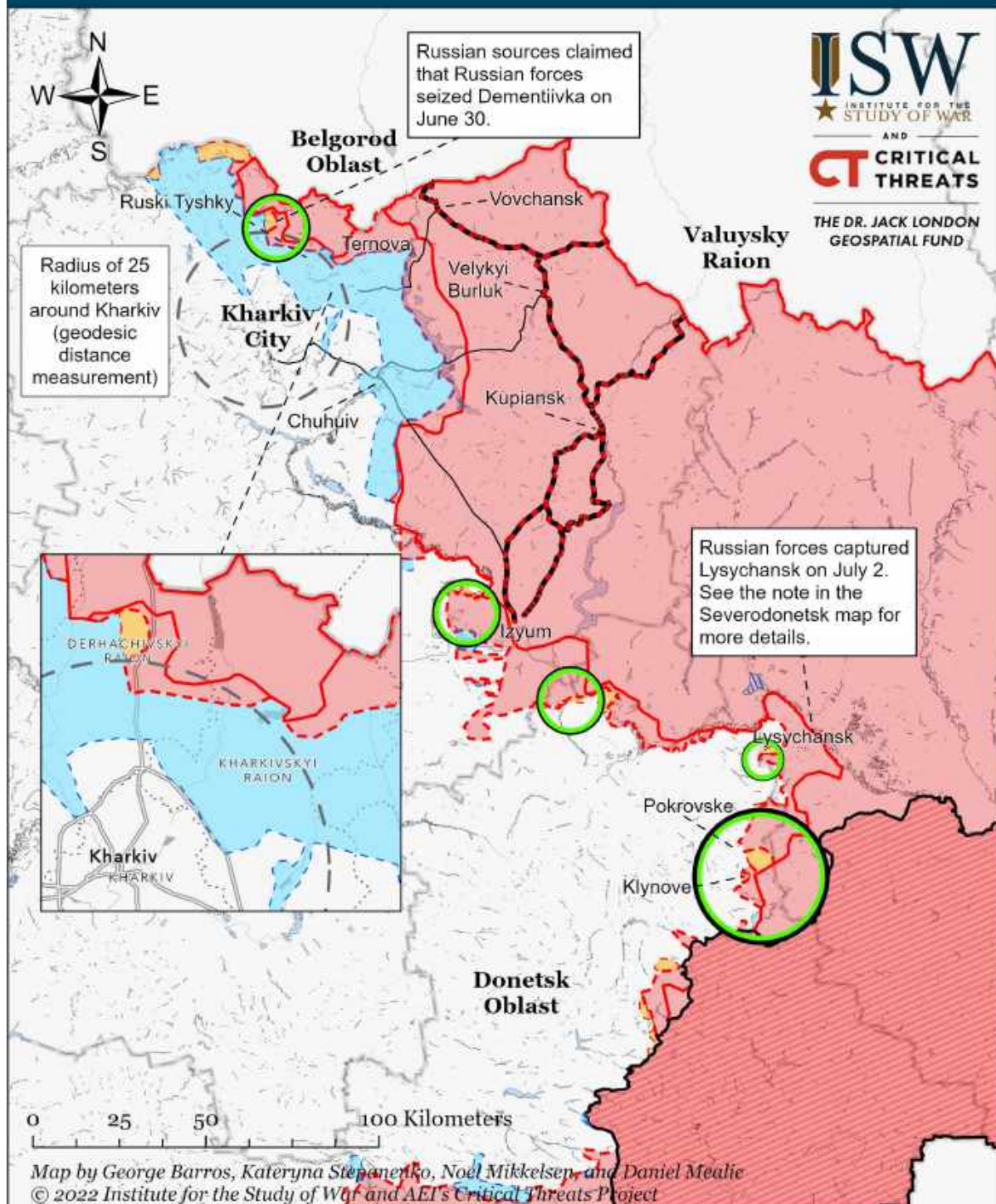
|  |   |  |   |  |  |
|--|---|--|---|--|--|
|  | Significant Fighting in the past 24 Hours |  | Russian-controlled Ukrainian Territory before February 24 |  | Claimed Russian Control over Ukrainian Territory |
|  | Key Ukrainian Roads                       |  | Assessed Russian Advances in Ukraine*                     |  | Claimed Ukrainian Counteroffensives              |
|  | Russian Ground Lines of Communication     |  | Assessed Russian-controlled Ukrainian Territory           |  | Reported Ukrainian Partisan Warfare              |

\* Assessed Russian advances are areas where ISW assesses Russian forces have operated in or launched attacks against but do not control.

Note: Ukrainian Deputy Defense Minister Hanna Malyar stated on June 20 that Ukrainian forces have nearly reached the Ukrainian-Russian border. ISW will map Ukrainian counteroffensives when we observe corroborating evidence. We expanded Ukrainian counteroffensives in Rtyshchivka, just southwest of Chuhuiv, based on the Ukrainian General Staff report that Ukrainian forces repulsed a Russian reconnaissance-in-force attempt on the settlement on June 20.



# Assessed Control of Terrain Around Kharkiv as of July 2, 2022, 3:00 PM ET



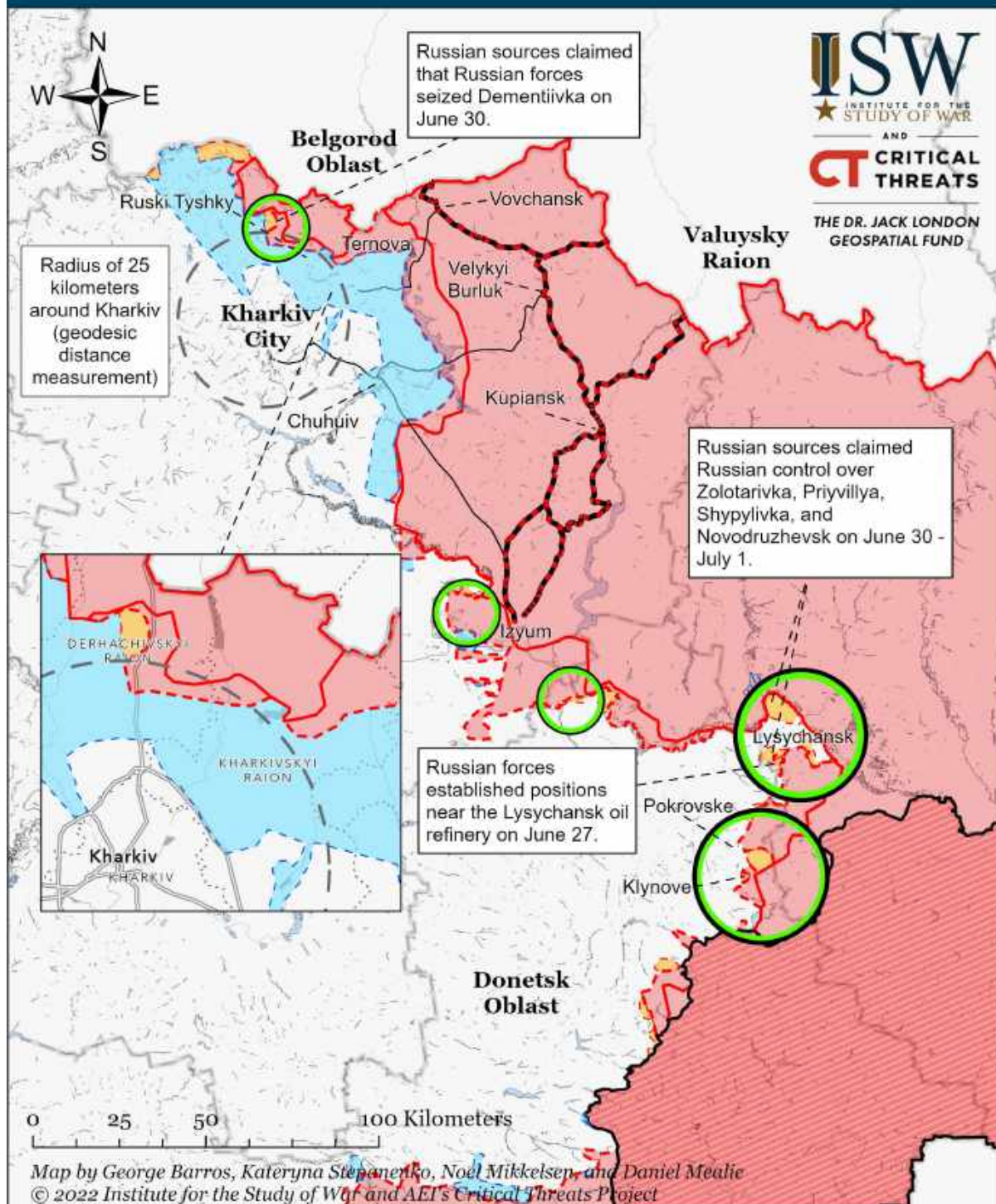
- |   |   |  |
|---|---|--|
| Significant Fighting in the past 24 Hours | Russian-controlled Ukrainian Territory before February 24 | Claimed Russian Control over Ukrainian Territory |
| Key Ukrainian Roads                       | Assessed Russian Advances in Ukraine*                     | Claimed Ukrainian Counteroffensives              |
| Russian Ground Lines of Communication     | Assessed Russian-controlled Ukrainian Territory           | Reported Ukrainian Partisan Warfare              |

\* Assessed Russian advances are areas where ISW assesses Russian forces have operated in or launched attacks against but do not control.

Note: Ukrainian Deputy Defense Minister Hanna Malyar stated on June 20 that Ukrainian forces have nearly reached the Ukrainian-Russian border. ISW will map Ukrainian counteroffensives when we observe corroborating evidence. We expanded Ukrainian counteroffensives in Rtyshchivka, just southwest of Chuhuiv, based on the Ukrainian General Staff report that Ukrainian forces repulsed a Russian reconnaissance-in-force attempt on the settlement on June 20.



# Assessed Control of Terrain Around Kharkiv as of July 1, 2022, 3:00 PM ET



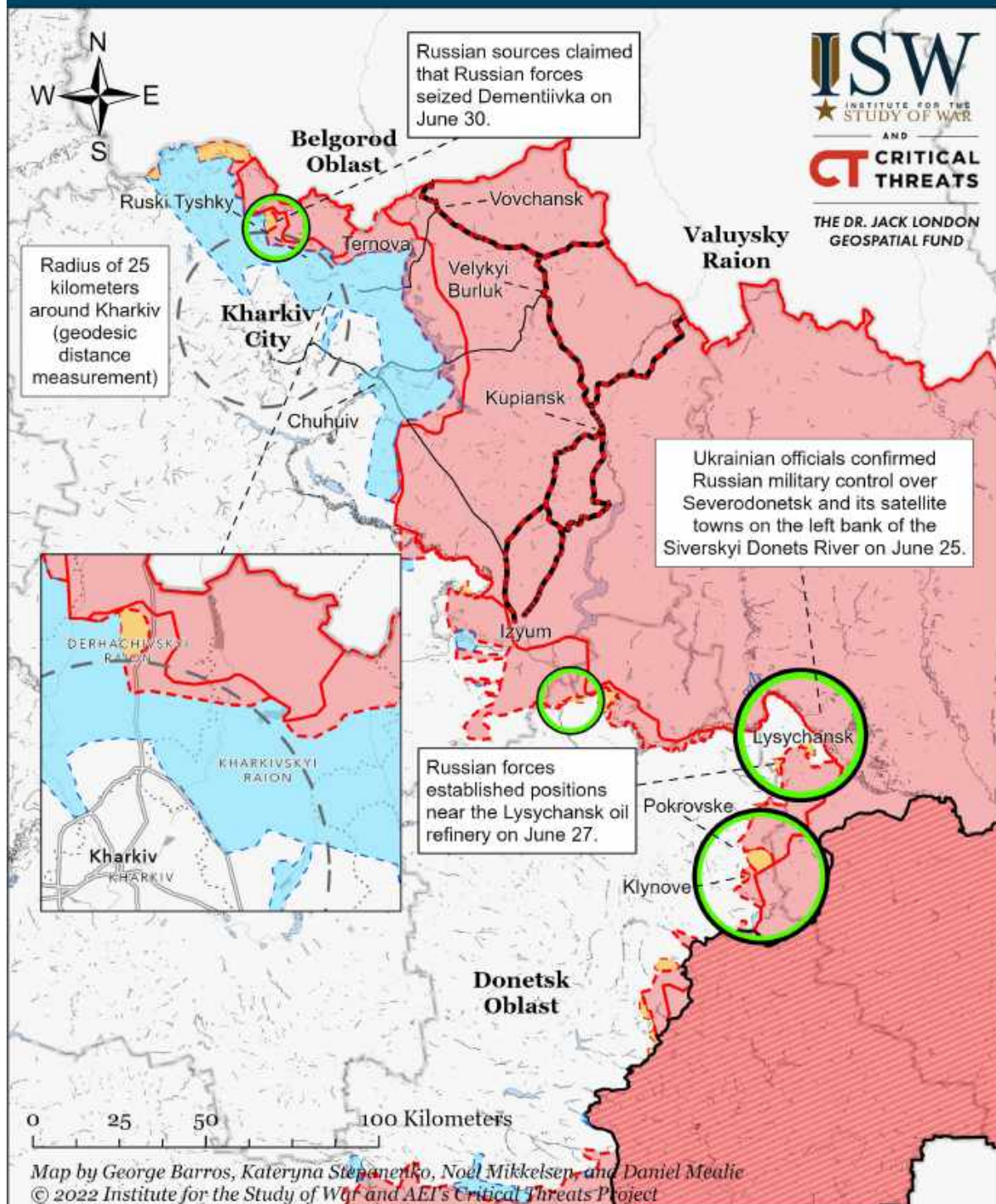
|   |   |  |
|---|---|--|
| Significant Fighting in the past 24 Hours | Russian-controlled Ukrainian Territory before February 24 | Claimed Russian Control over Ukrainian Territory |
| Key Ukrainian Roads                       | Assessed Russian Advances in Ukraine*                     | Claimed Ukrainian Counteroffensives              |
| Russian Ground Lines of Communication     | Assessed Russian-controlled Ukrainian Territory           | Reported Ukrainian Partisan Warfare              |

\* Assessed Russian advances are areas where ISW assesses Russian forces have operated in or launched attacks against but do not control.

Note: Ukrainian Deputy Defense Minister Hanna Malyar stated on June 20 that Ukrainian forces have nearly reached the Ukrainian-Russian border. ISW will map Ukrainian counteroffensives when we observe corroborating evidence. We expanded Ukrainian counteroffensives in Rtyshchivka, just southwest of Chuhuiv, based on the Ukrainian General Staff report that Ukrainian forces repulsed a Russian reconnaissance-in-force attempt on the settlement on June 20.



# Assessed Control of Terrain Around Kharkiv as of June 30, 2022, 3:00 PM ET



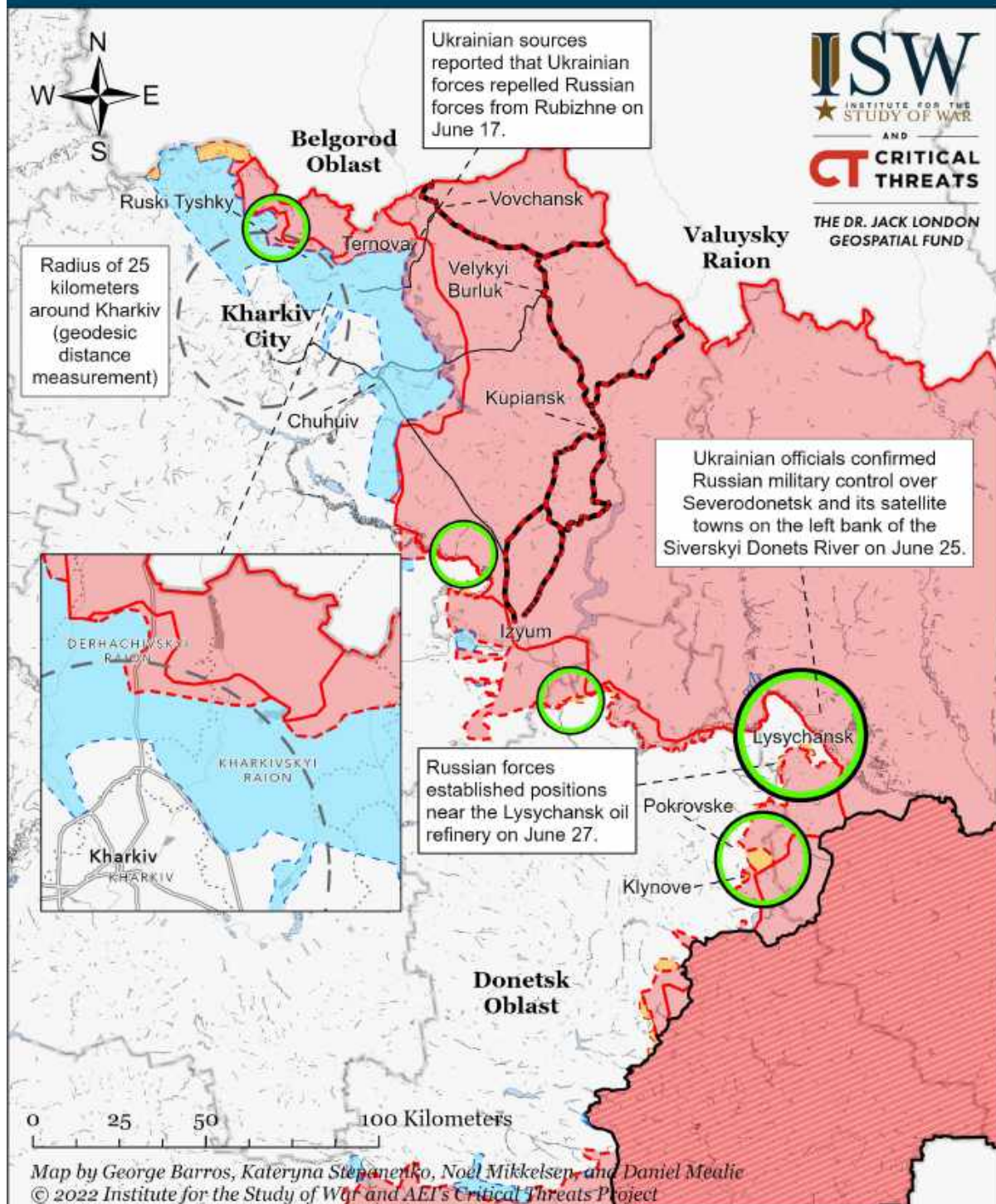
|   |   |  |
|---|---|--|
| Significant Fighting in the past 24 Hours | Russian-controlled Ukrainian Territory before February 24 | Claimed Russian Control over Ukrainian Territory |
| Key Ukrainian Roads                       | Assessed Russian Advances in Ukraine*                     | Claimed Ukrainian Counteroffensives              |
| Russian Ground Lines of Communication     | Assessed Russian-controlled Ukrainian Territory           | Reported Ukrainian Partisan Warfare              |

\* Assessed Russian advances are areas where ISW assesses Russian forces have operated in or launched attacks against but do not control.

Note: Ukrainian Deputy Defense Minister Hanna Malyar stated on June 20 that Ukrainian forces have nearly reached the Ukrainian-Russian border. ISW will map Ukrainian counteroffensives when we observe corroborating evidence. We expanded Ukrainian counteroffensives in Rtyshchivka, just southwest of Chuhuiv, based on the Ukrainian General Staff report that Ukrainian forces repulsed a Russian reconnaissance-in-force attempt on the settlement on June 20.



# Assessed Control of Terrain Around Kharkiv as of June 29, 2022, 3:00 PM ET



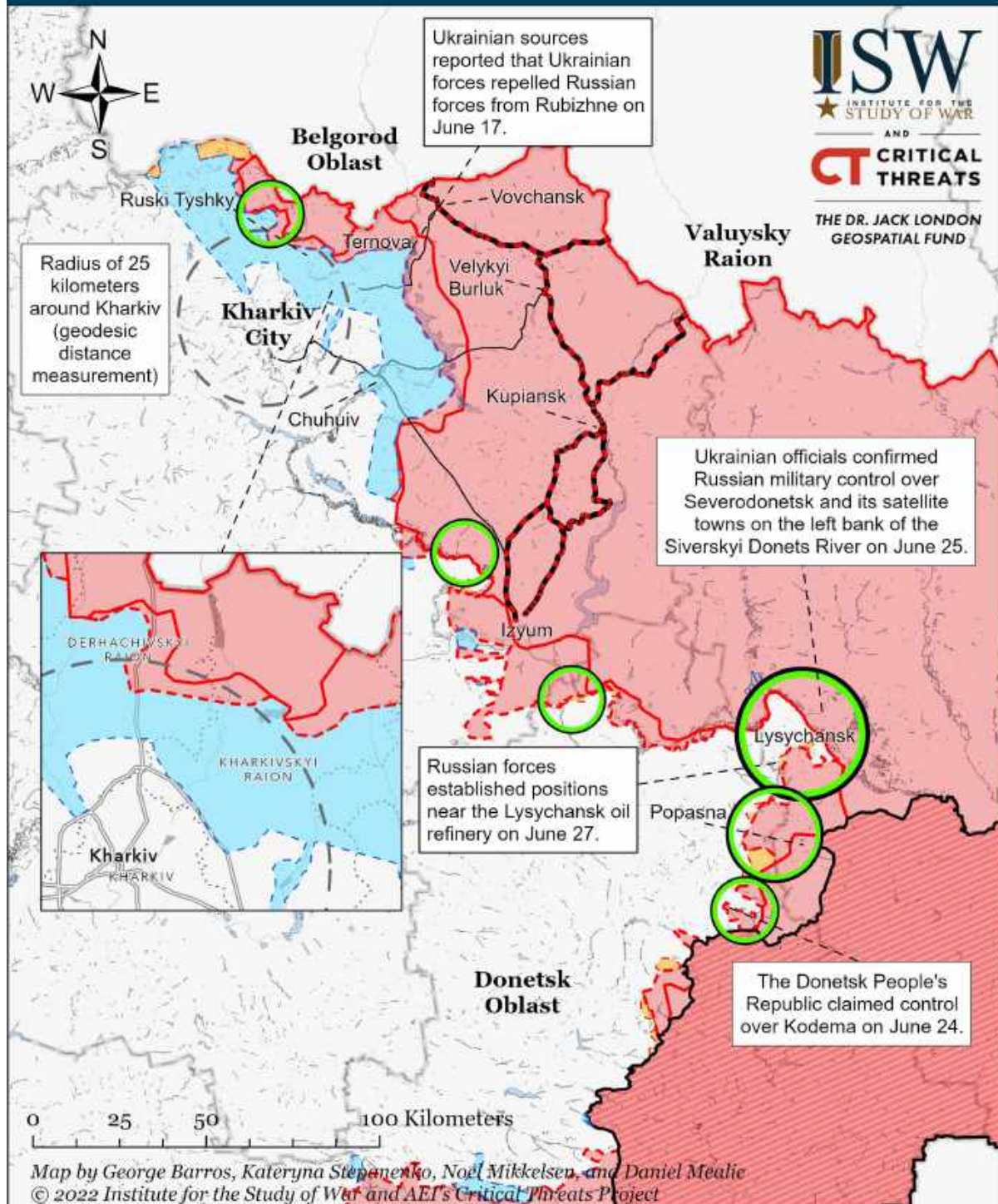
|  |   |  |   |  |  |
|--|---|--|---|--|--|
|  | Significant Fighting in the past 24 Hours |  | Russian-controlled Ukrainian Territory before February 24 |  | Claimed Russian Control over Ukrainian Territory |
|  | Key Ukrainian Roads                       |  | Assessed Russian Advances in Ukraine*                     |  | Claimed Ukrainian Counteroffensives              |
|  | Russian Ground Lines of Communication     |  | Assessed Russian-controlled Ukrainian Territory           |  | Reported Ukrainian Partisan Warfare              |

\* Assessed Russian advances are areas where ISW assesses Russian forces have operated in or launched attacks against but do not control.

Note: Ukrainian Deputy Defense Minister Hanna Malyar stated on June 20 that Ukrainian forces have nearly reached the Ukrainian-Russian border. ISW will map Ukrainian counteroffensives when we observe corroborating evidence. We expanded Ukrainian counteroffensives in Rtyshchivka, just southwest of Chuhuiv, based on the Ukrainian General Staff report that Ukrainian forces repulsed a Russian reconnaissance-in-force attempt on the settlement on June 20.



# Assessed Control of Terrain Around Kharkiv as of June 28, 2022, 3:00 PM ET



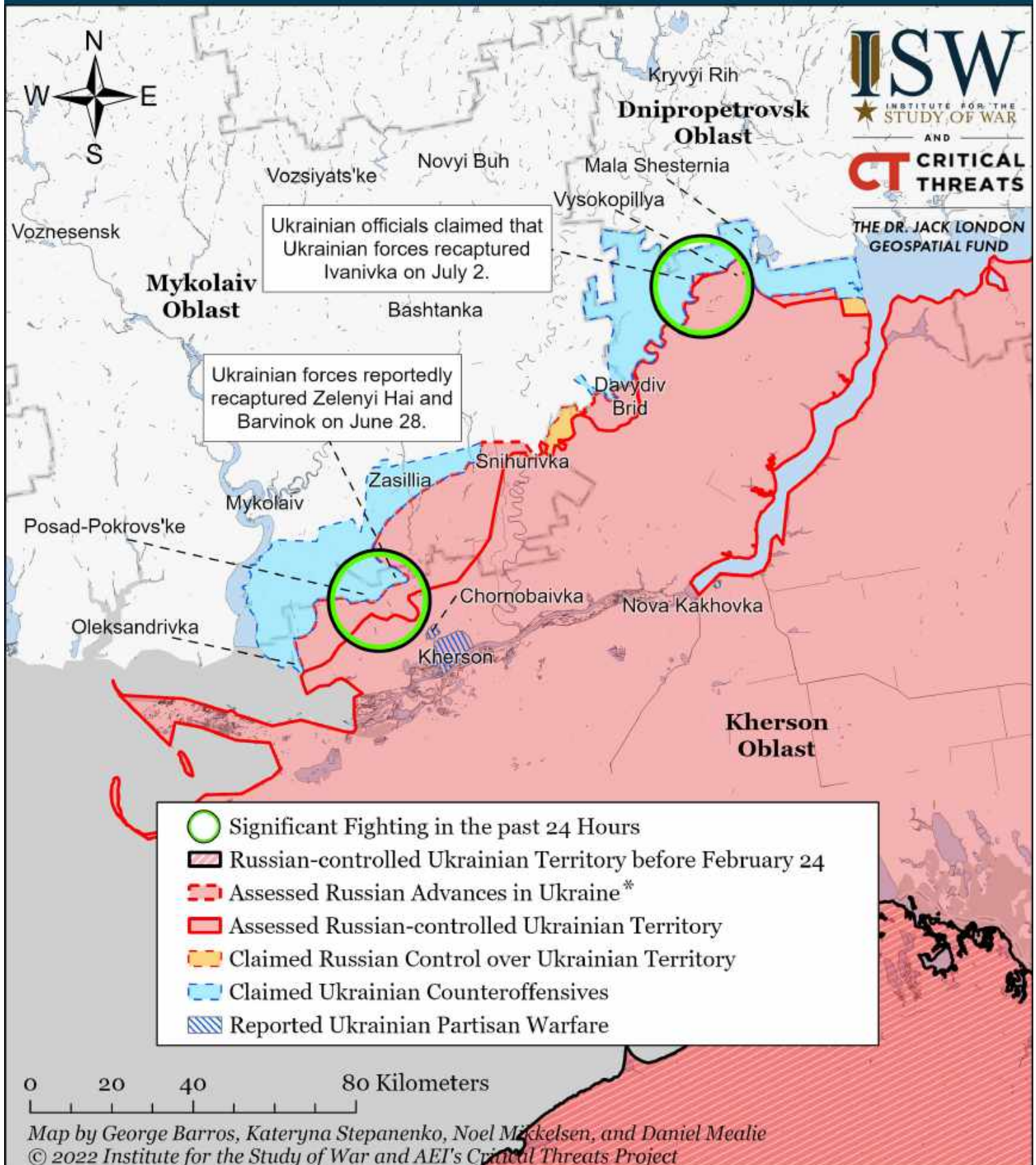
|   |   |  |
|---|---|--|
| Significant Fighting in the past 24 Hours | Russian-controlled Ukrainian Territory before February 24 | Claimed Russian Control over Ukrainian Territory |
| Key Ukrainian Roads                       | Assessed Russian Advances in Ukraine*                     | Claimed Ukrainian Counteroffensives              |
| Russian Ground Lines of Communication     | Assessed Russian-controlled Ukrainian Territory           | Reported Ukrainian Partisan Warfare              |

\* Assessed Russian advances are areas where ISW assesses Russian forces have operated in or launched attacks against but do not control.

Note: Ukrainian Deputy Defense Minister Hanna Malyar stated on June 20 that Ukrainian forces have nearly reached the Ukrainian-Russian border. ISW will map Ukrainian counteroffensives when we observe corroborating evidence. We expanded Ukrainian counteroffensives in Rtyshchivka, just southwest of Chuhuiv, based on the Ukrainian General Staff report that Ukrainian forces repulsed a Russian reconnaissance-in-force attempt on the settlement on June 20.



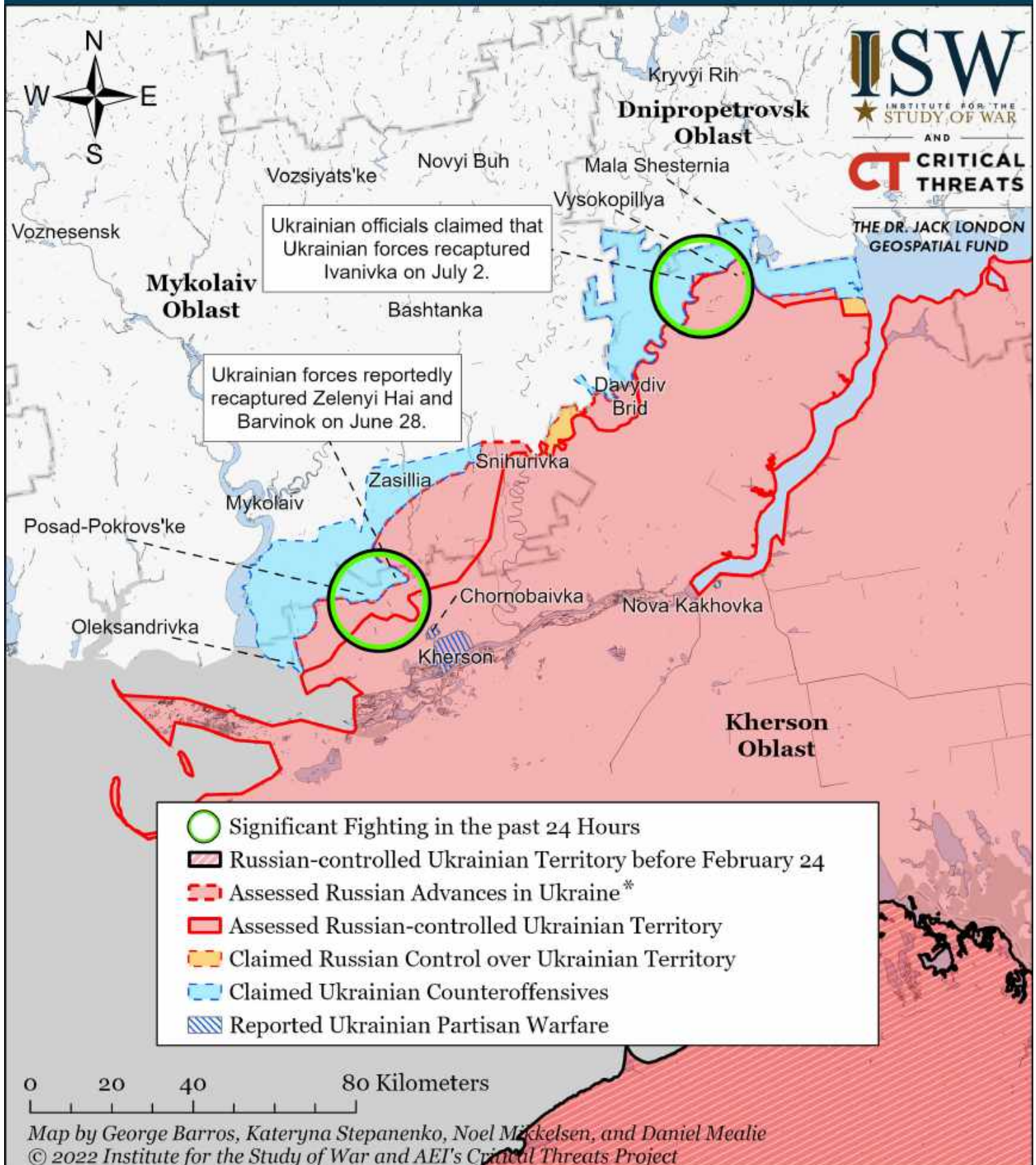
# Assessed Control of Terrain Around Kherson and Mykolaiv as of July 3, 2022, 3:00 PM ET



\* Assessed Russian advances are areas where ISW assesses Russian forces have operated in or launched attacks against but do not control.



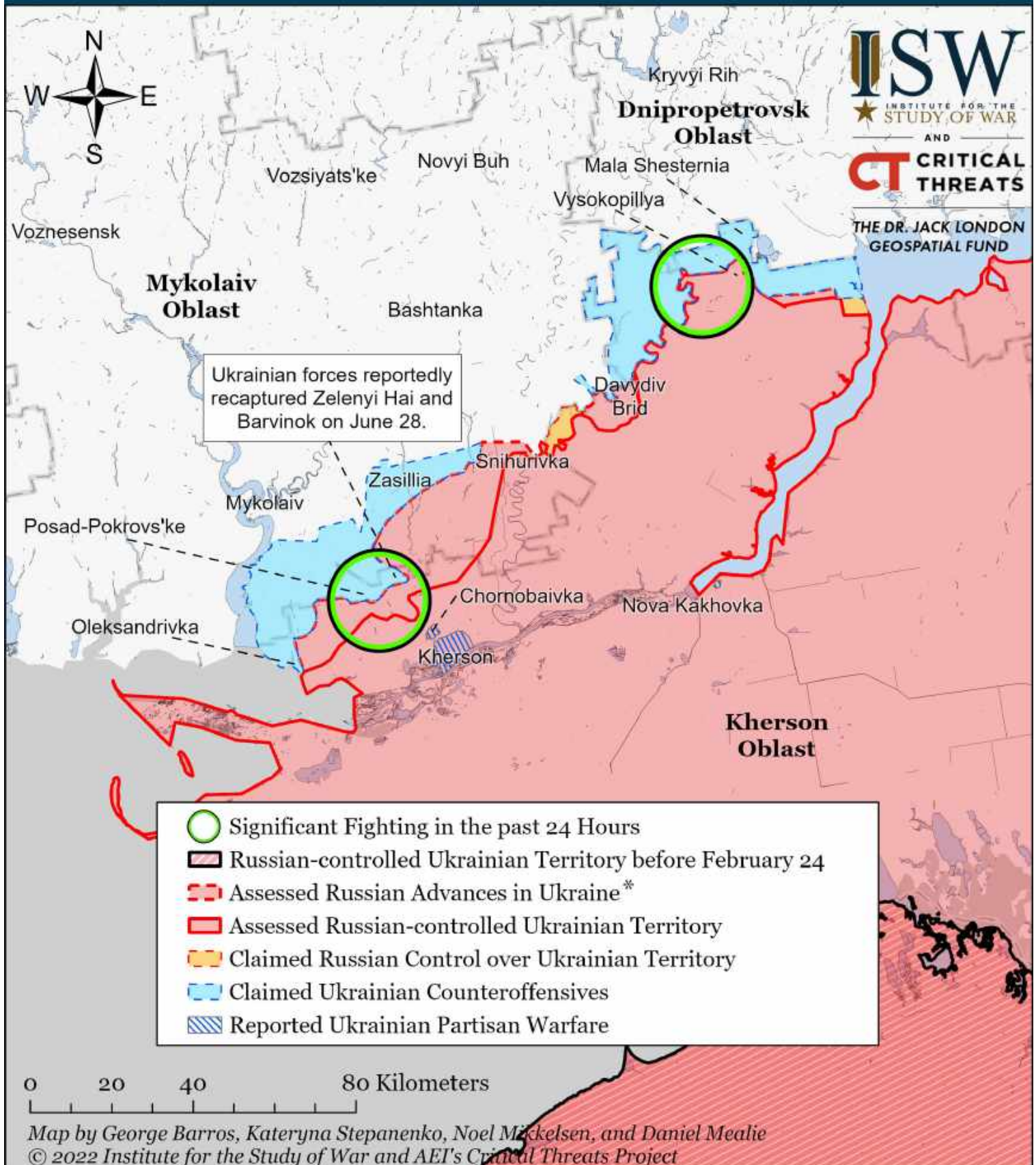
# Assessed Control of Terrain Around Kherson and Mykolaiv as of July 2, 2022, 3:00 PM ET



\* Assessed Russian advances are areas where ISW assesses Russian forces have operated in or launched attacks against but do not control.



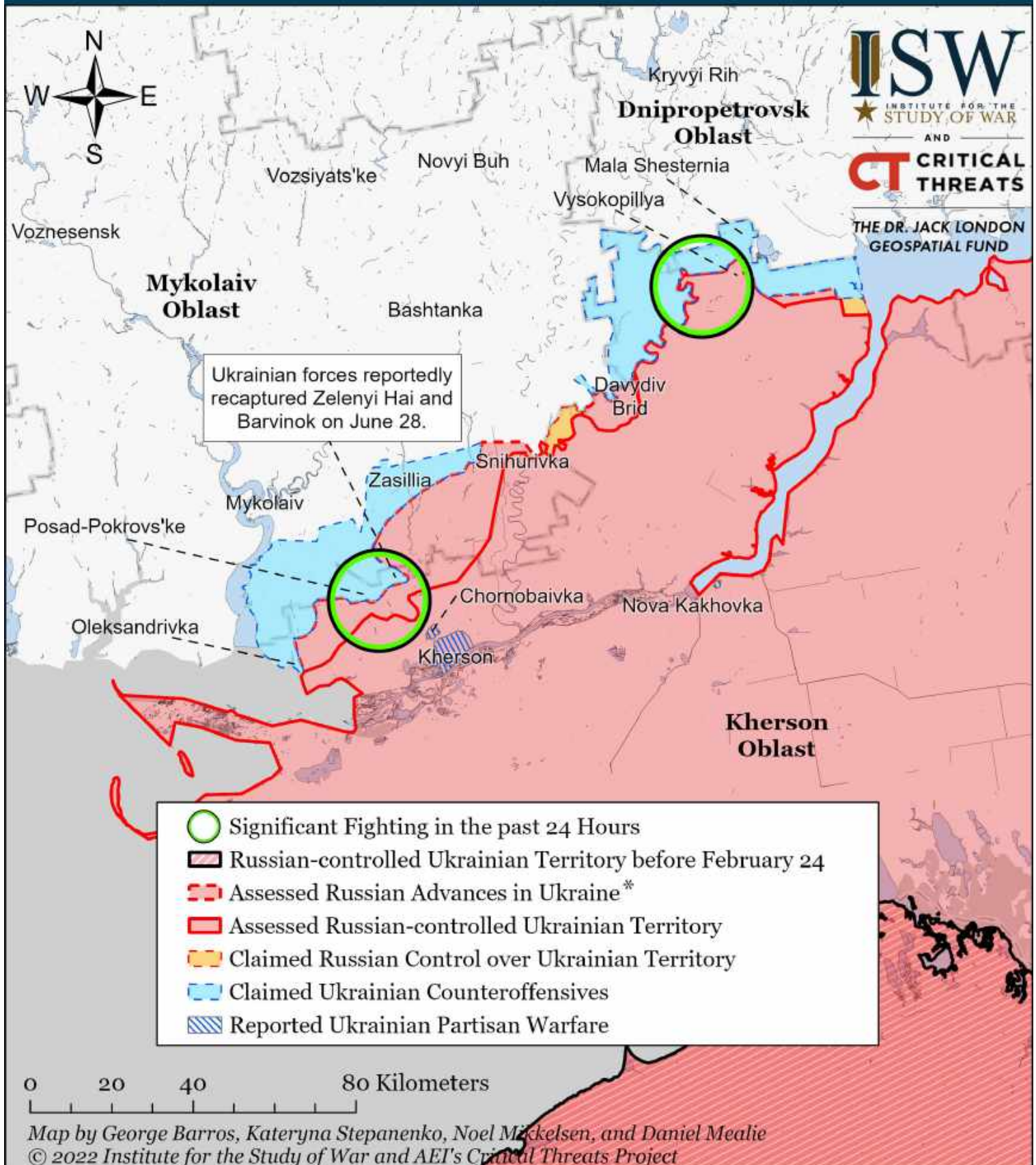
# Assessed Control of Terrain Around Kherson and Mykolaiv as of July 1, 2022, 3:00 PM ET



\* Assessed Russian advances are areas where ISW assesses Russian forces have operated in or launched attacks against but do not control.



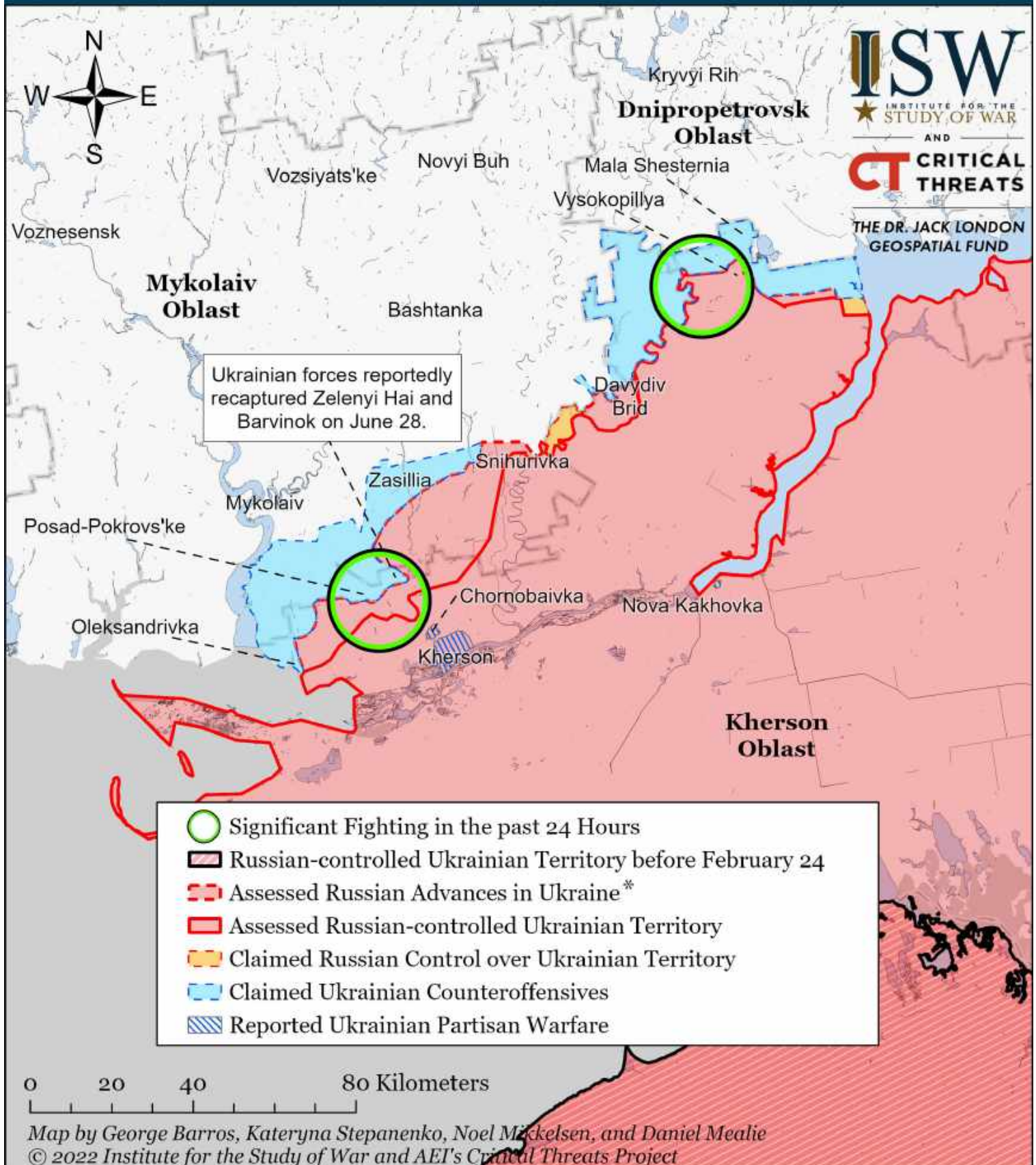
# Assessed Control of Terrain Around Kherson and Mykolaiv as of June 30, 2022, 3:00 PM ET



\* Assessed Russian advances are areas where ISW assesses Russian forces have operated in or launched attacks against but do not control.



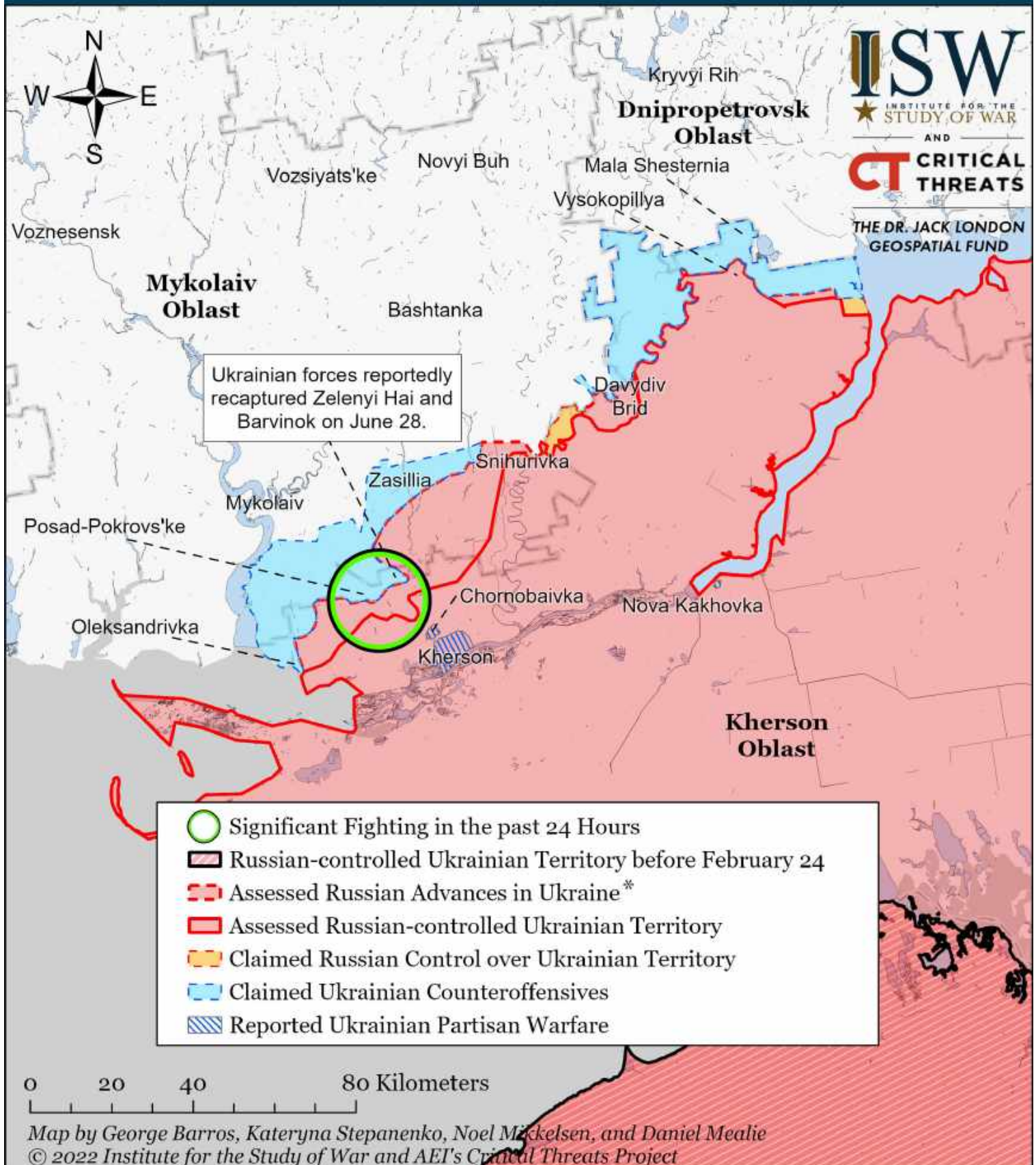
# Assessed Control of Terrain Around Kherson and Mykolaiv as of June 29, 2022, 3:00 PM ET



\* Assessed Russian advances are areas where ISW assesses Russian forces have operated in or launched attacks against but do not control.



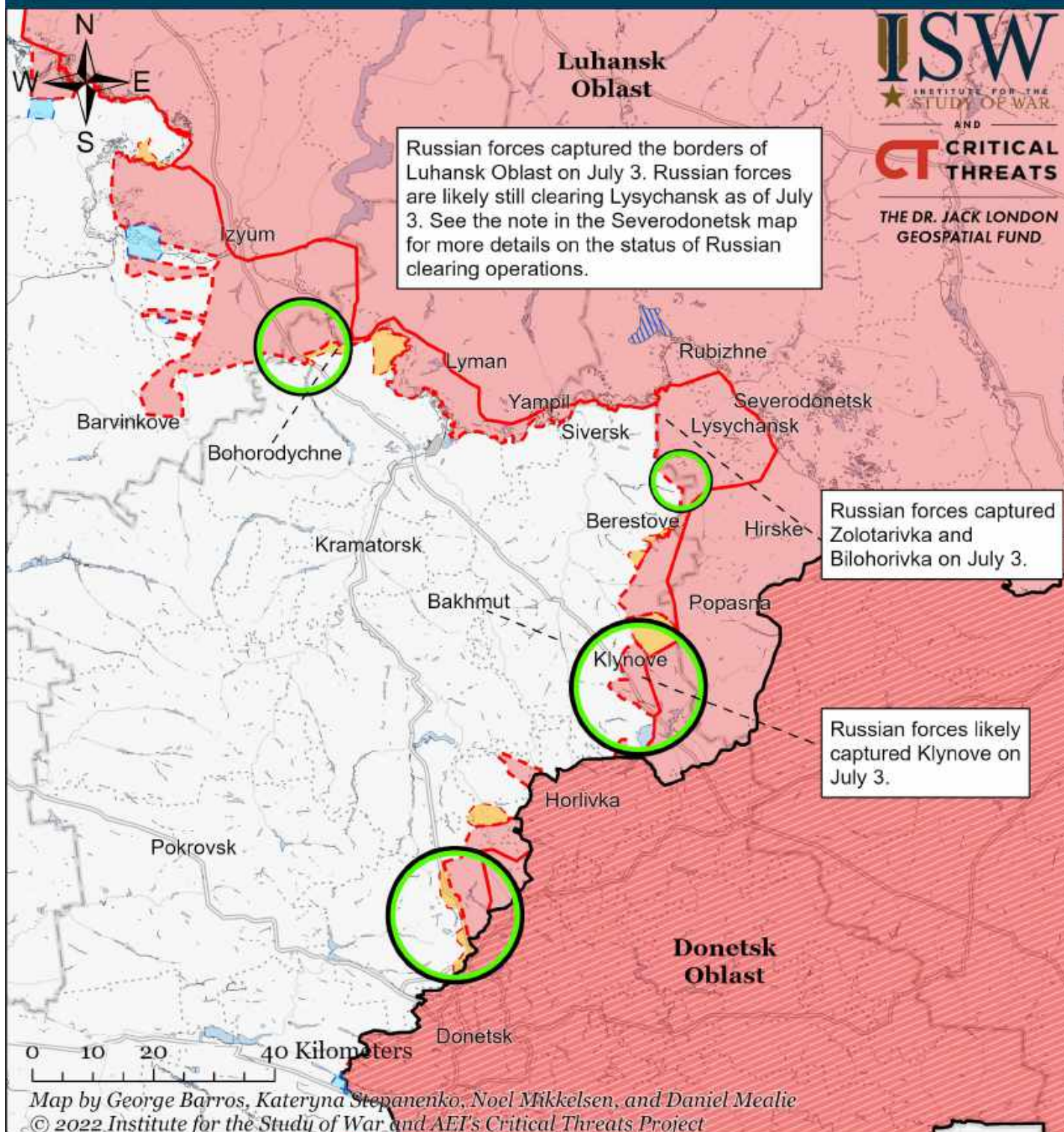
# Assessed Control of Terrain Around Kherson and Mykolaiv as of June 28, 2022, 3:00 PM ET



\* Assessed Russian advances are areas where ISW assesses Russian forces have operated in or launched attacks against but do not control.



# Assessed Control of Terrain Around Luhansk as of July 3, 2022, 3:00 PM ET

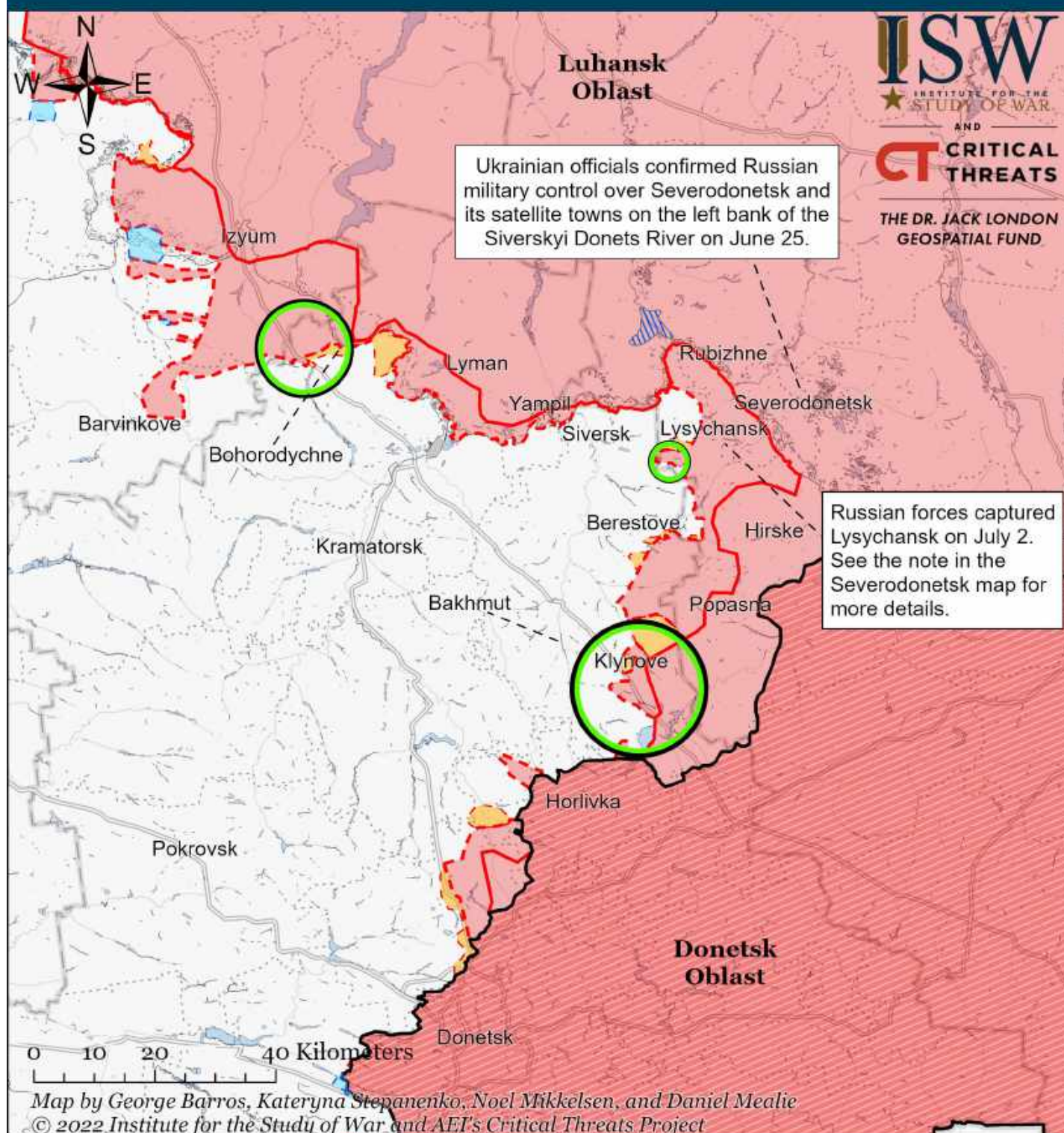


- Significant Fighting in the past 24 Hours
- Assessed Russian-controlled Ukrainian Territory
- Reported Ukrainian Partisan Warfare
- Russian-controlled Ukrainian Territory before February 24
- Claimed Russian Control over Ukrainian Territory
- - - Assessed Russian Advances in Ukraine\*
- Claimed Ukrainian Counteroffensives

\* Assessed Russian advances are areas where ISW assesses Russian forces have operated in or launched attacks against but do not control.



# Assessed Control of Terrain Around Luhansk as of July 2, 2022, 3:00 PM ET

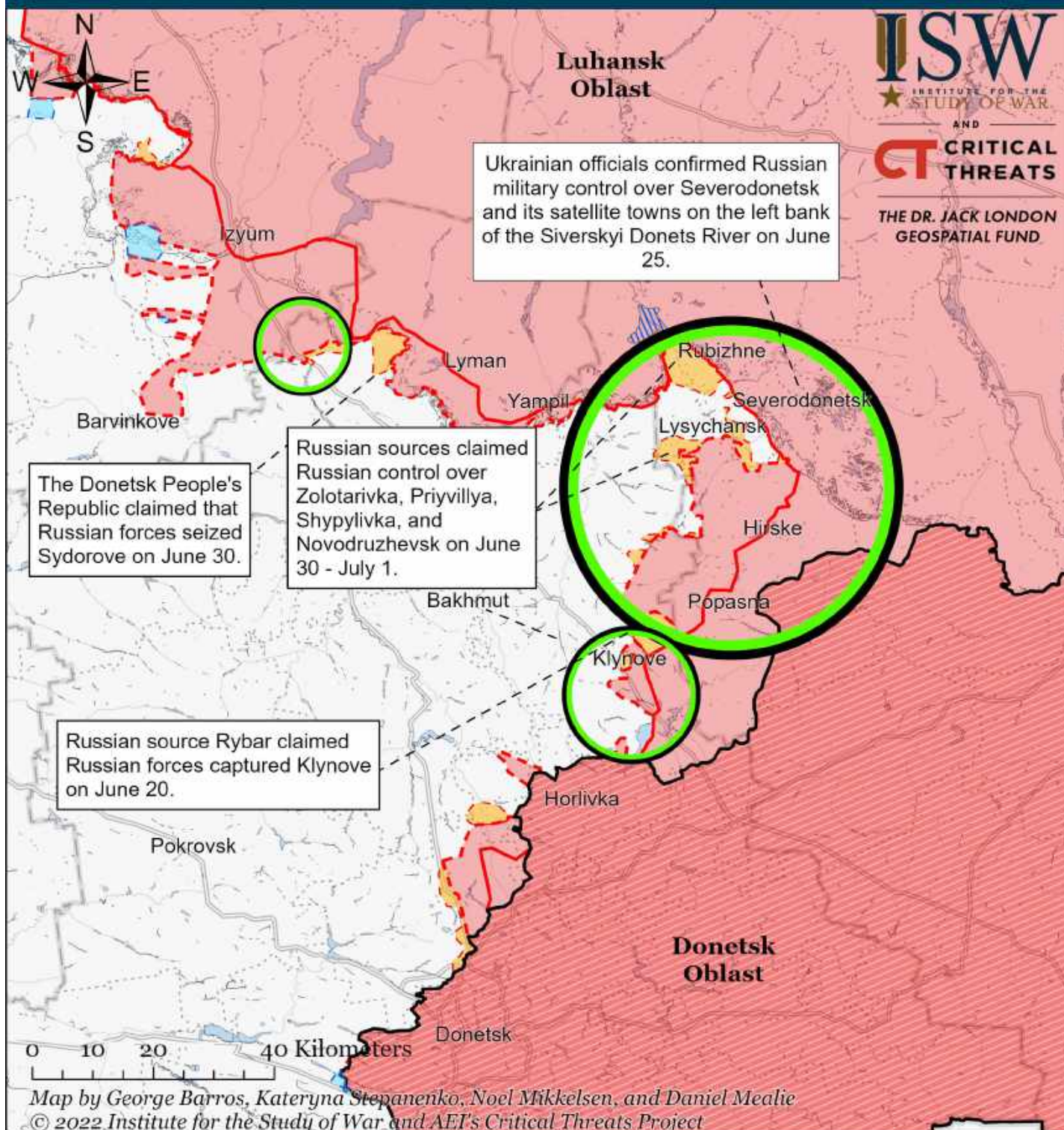


- Significant Fighting in the past 24 Hours
- Assessed Russian-controlled Ukrainian Territory
- Reported Ukrainian Partisan Warfare
- Russian-controlled Ukrainian Territory before February 24
- Claimed Russian Control over Ukrainian Territory
- Assessed Russian Advances in Ukraine\*
- Claimed Ukrainian Counteroffensives

\* Assessed Russian advances are areas where ISW assesses Russian forces have operated in or launched attacks against but do not control.



# Assessed Control of Terrain Around Luhansk as of July 1, 2022, 3:00 PM ET

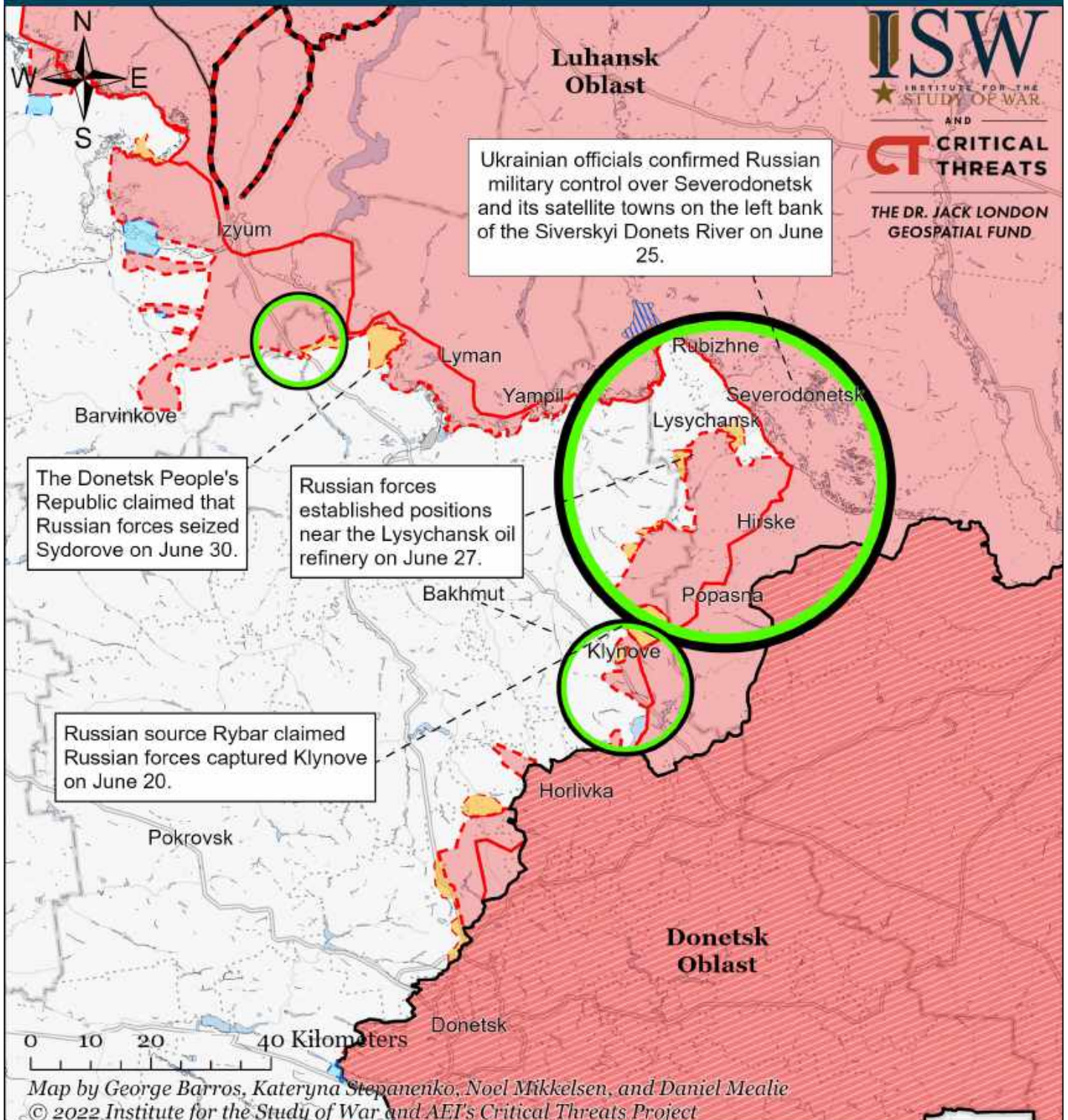


- Significant Fighting in the past 24 Hours
- ▭ Assessed Russian-controlled Ukrainian Territory
- ▨ Reported Ukrainian Partisan Warfare
- ▭ Russian-controlled Ukrainian Territory before February 24
- ▭ Claimed Russian Control over Ukrainian Territory
- - - Assessed Russian Advances in Ukraine\*
- ▭ Claimed Ukrainian Counteroffensives

\* Assessed Russian advances are areas where ISW assesses Russian forces have operated in or launched attacks against but do not control.



# Assessed Control of Terrain Around Luhansk as of June 30, 2022, 3:00 PM ET

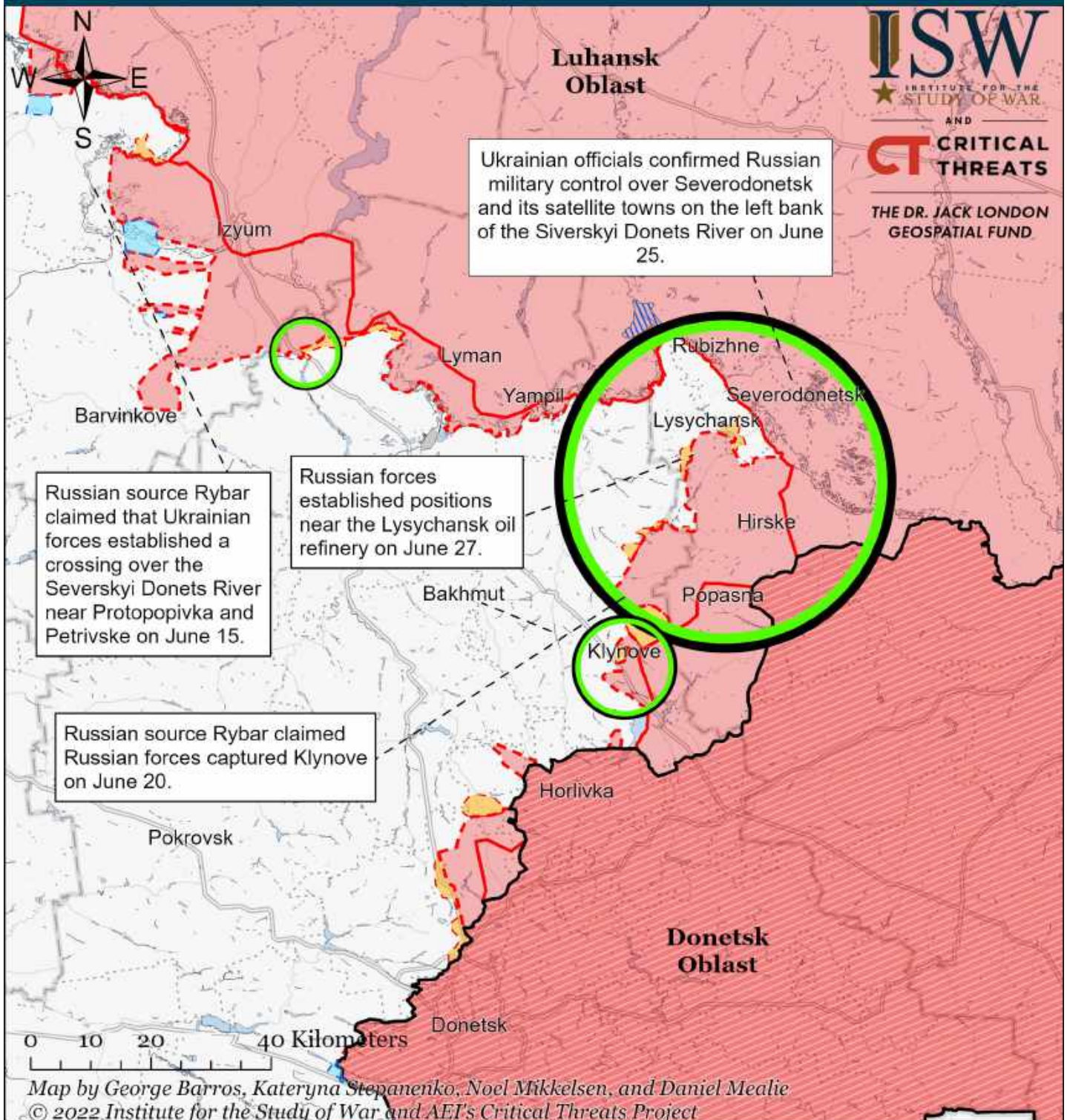


- Significant Fighting in the past 24 Hours
- Assessed Russian-controlled Ukrainian Territory
- Reported Ukrainian Partisan Warfare
- Russian-controlled Ukrainian Territory before February 24
- Claimed Russian Control over Ukrainian Territory
- Assessed Russian Advances in Ukraine\*
- Claimed Ukrainian Counteroffensives

\* Assessed Russian advances are areas where ISW assesses Russian forces have operated in or launched attacks against but do not control.



# Assessed Control of Terrain Around Luhansk as of June 29, 2022, 3:00 PM ET

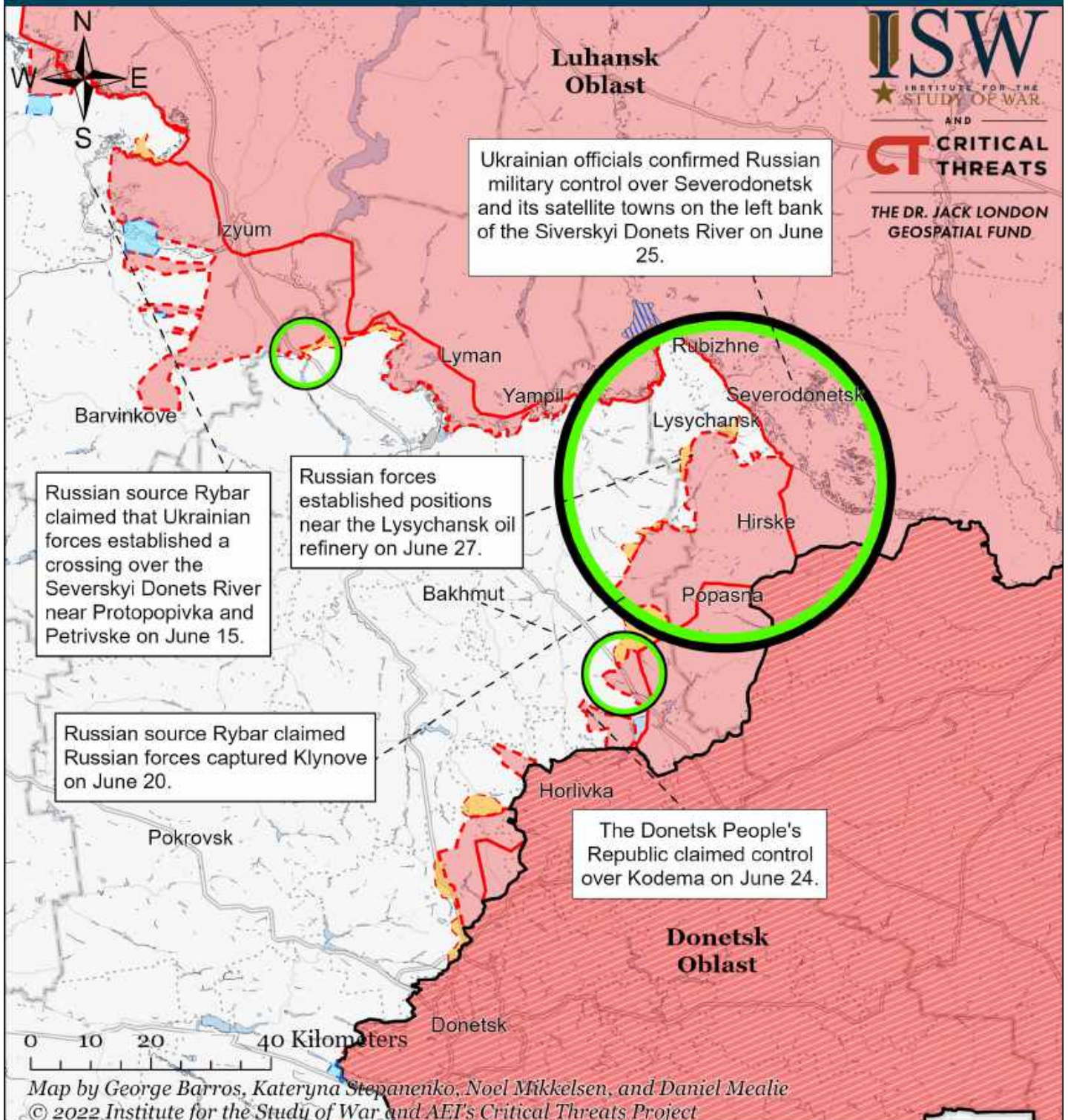


- Significant Fighting in the past 24 Hours
- ▭ Assessed Russian-controlled Ukrainian Territory
- ▨ Reported Ukrainian Partisan Warfare
- ▭ Russian-controlled Ukrainian Territory before February 24
- ▭ Claimed Russian Control over Ukrainian Territory
- ▭ Assessed Russian Advances in Ukraine\*
- ▭ Claimed Ukrainian Counteroffensives

\* Assessed Russian advances are areas where ISW assesses Russian forces have operated in or launched attacks against but do not control.



# Assessed Control of Terrain Around Luhansk as of June 28, 2022, 3:00 PM ET

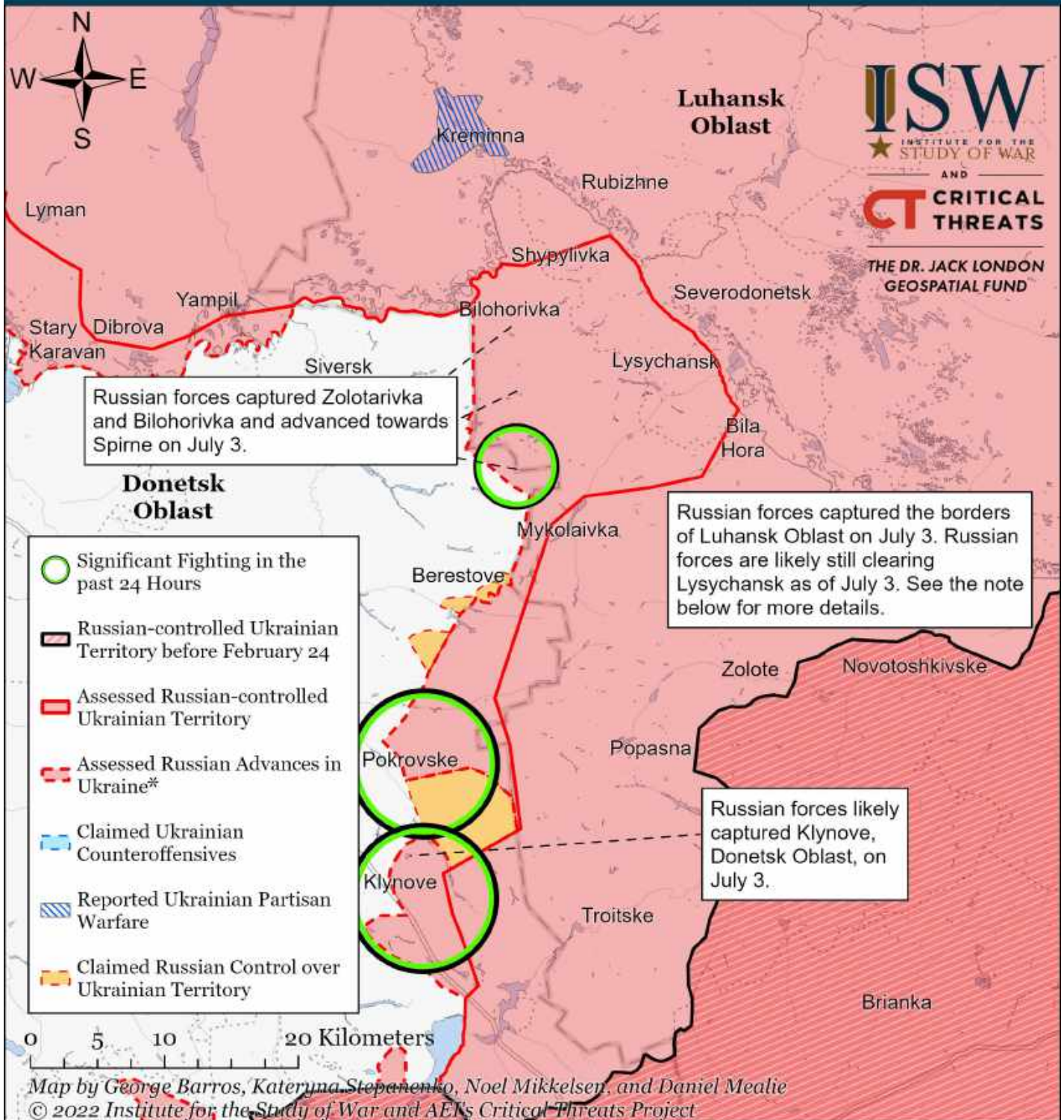


- Significant Fighting in the past 24 Hours
- Assessed Russian-controlled Ukrainian Territory
- Reported Ukrainian Partisan Warfare
- Russian-controlled Ukrainian Territory before February 24
- Claimed Russian Control over Ukrainian Territory
- Assessed Russian Advances in Ukraine\*
- Claimed Ukrainian Counteroffensives

\* Assessed Russian advances are areas where ISW assesses Russian forces have operated in or launched attacks against but do not control.



# Assessed Control of Terrain Around Severodonetsk as of July 3, 2022, 3:00 PM ET

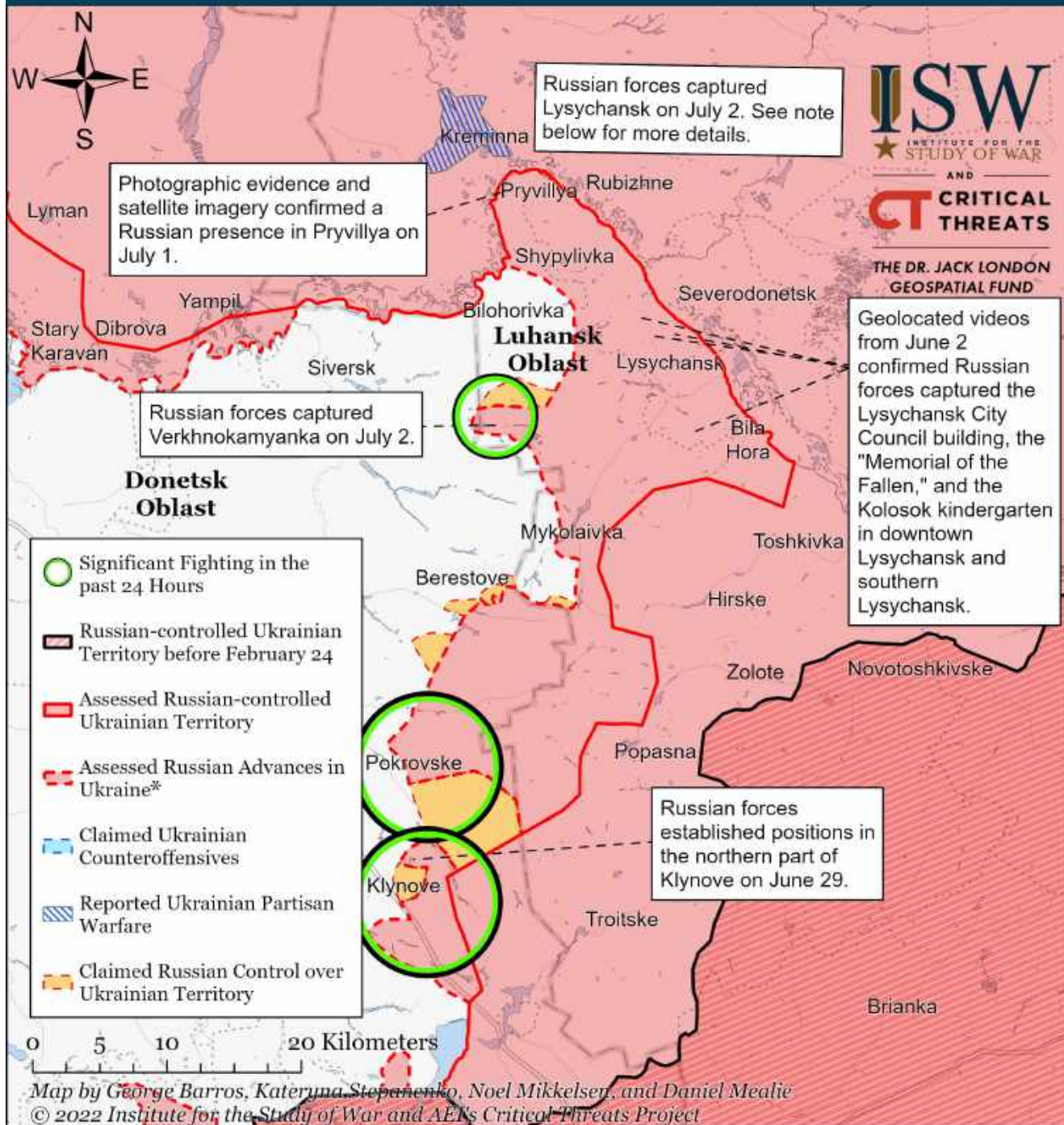


\* Assessed Russian advances are areas where ISW assesses Russian forces have operated in or launched attacks against but do not control.

Note: Russian forces captured the borders of Luhansk Oblast on July 3. Russian forces likely have not fully cleared Lysychansk as of July 3, however. The Ukrainian General Staff stated on July 3 that Russian forces in Lysychansk are concentrating their main efforts on securing positions in Lysychansk and Verkhokamyanka. The Russian Ministry of Defense Stated on July 3 that Russian forces are still fighting within Lysychansk itself to defeat encircled Ukrainian troops. Russian milblogger Rybar claimed that Russian forces have not finished the clearing of the Lysychansk cauldron as of the evening of July 3 despite the Russian Ministry of Defense's statement of "liberating" all of Luhansk. Rybar claimed that the battles ended in Bila Hora, but there are pockets of resistance in Lysychansk. Russian milbloggers Poddubnyi and Military Chronicle stated on July 2 that Russian forces will be clearing Lysychansk for several days.



# Assessed Control of Terrain Around Severodonetsk as of July 2, 2022, 3:00 PM ET

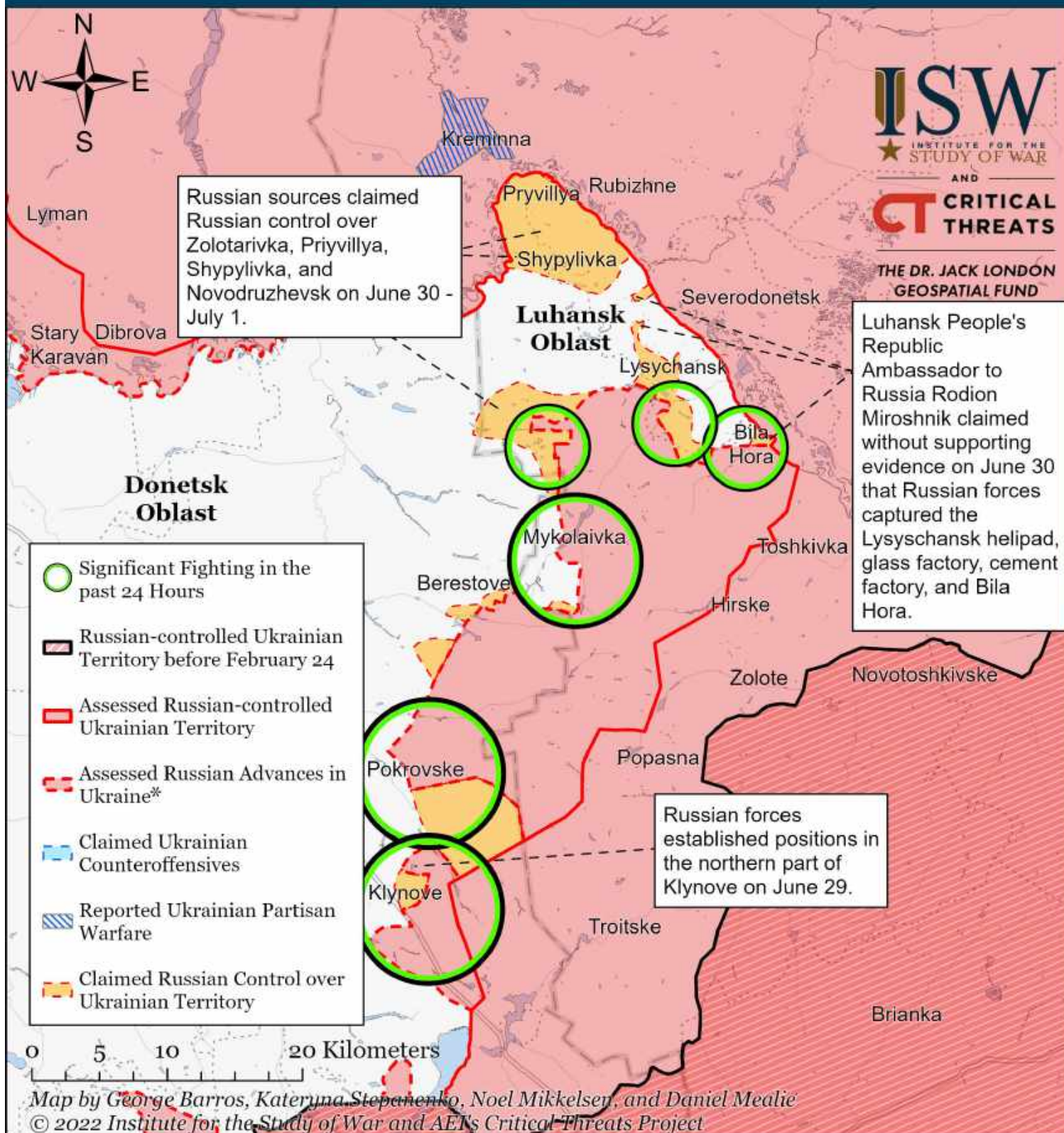


\* Assessed Russian advances are areas where ISW assesses Russian forces have operated in or launched attacks against but do not control.

Note: Russian forces likely captured Lysychansk on July 2. It's unclear whether Russian forces have fully cleared and secured Lysychansk as of July 2. Geolocated videos posted on July 2 show Russian forces casually walking around multiple locations in downtown Lysychansk. The relaxed behavior of these Russian troops indicates that there is likely no remaining organized Ukrainian defense in Lysychansk. Premier Russian news outlet RIA Novosti claimed that Russian forces captured Lysychansk on July 2. The Ukrainian General Staff evening report on July 2 did not mention Ukrainian defensive activity in Lysychansk as it previously had. Ukrainian Minister of Internal Affairs Vadym Denysenko gave an interview on July 2 in which he said, "Unfortunately, as of now, the probability of [Russian Forces] capturing Luhansk Oblast is very high," indicating that Ukrainian forces likely lost Lysychansk. It's unclear if Russian forces encircled any Ukrainian troops in the city. Some Russian sources claimed that Ukrainian forces vacated the city, whereas Chechen leader Ramzan Kadyrov claimed that Russian forces trapped an unspecified number of Ukrainian troops in the city. Ukrainian forces likely successfully withdrew from Lysychansk as they did from Zolote and Hirske around June 24. Russian forces likely captured Shepilove and Novodruzhesk as they claimed, though ISW has no secondary evidence to confirm this at this time. Bilohorivka is the last uncontested settlement in Luhansk Oblast as of this publication.



# Assessed Control of Terrain Around Severodonetsk as of July 1, 2022, 3:00 PM ET

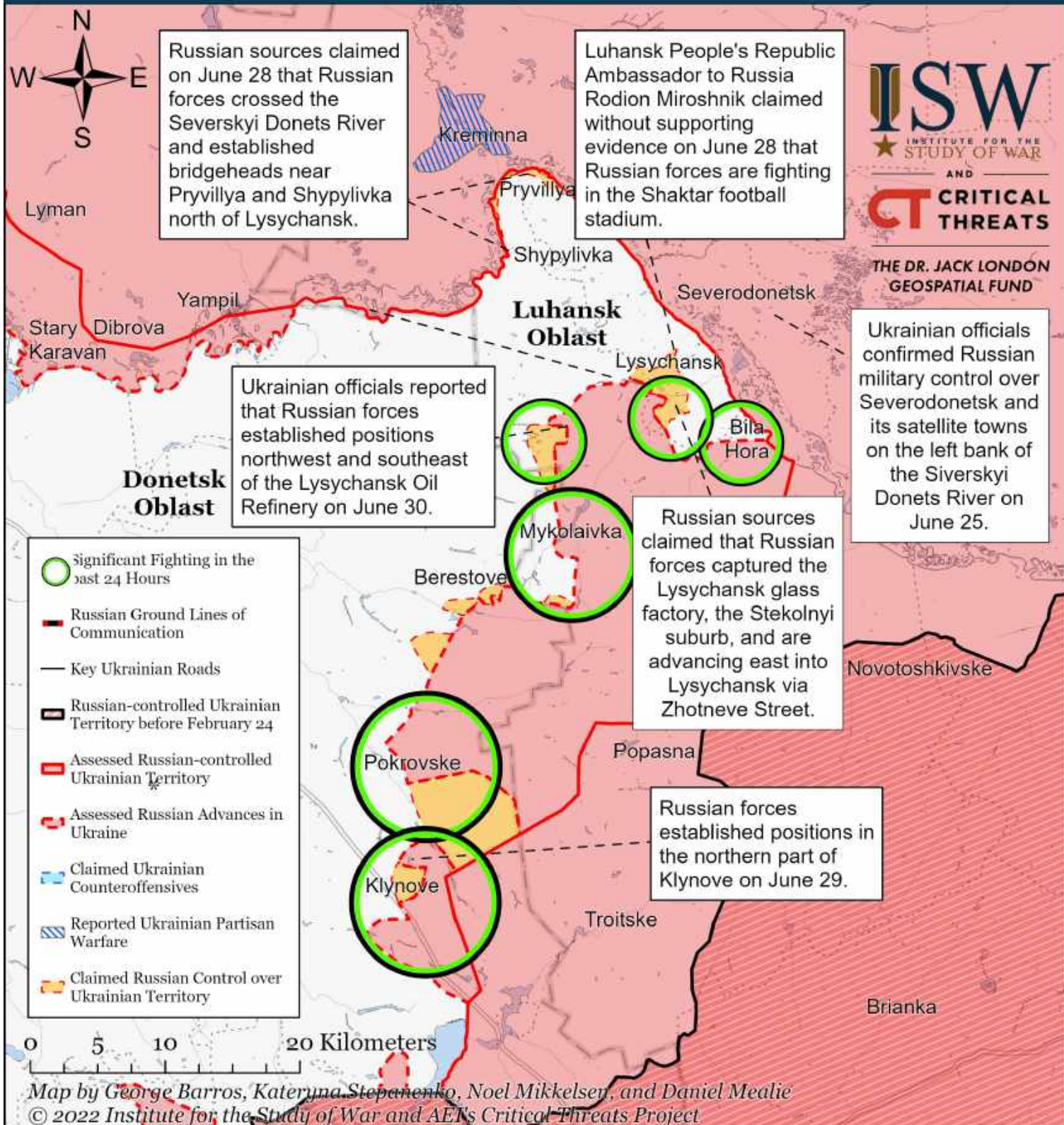


\* Assessed Russian advances are areas where ISW assesses Russian forces have operated in or launched attacks against but do not control.

Note: ISW extended Russian claimed control over the northern part of Pryvillya based on Chechen Republic Head Ramzan Kadyrov's claim that Russian forces established control over half of the settlement on June 30. We recessed assessed Russian advances from Kodema and Novoluhanske on June 29 after Russian sources stated that Ukrainian forces still control Kodema, Semihirya, Novoluhanske, and the Vuhledar Power Plant. Russian sources previously claimed that Russian forces controlled Kodema and Novoluhanske.



# Assessed Control of Terrain Around Severodonetsk as of June 30, 2022, 3:00 PM ET

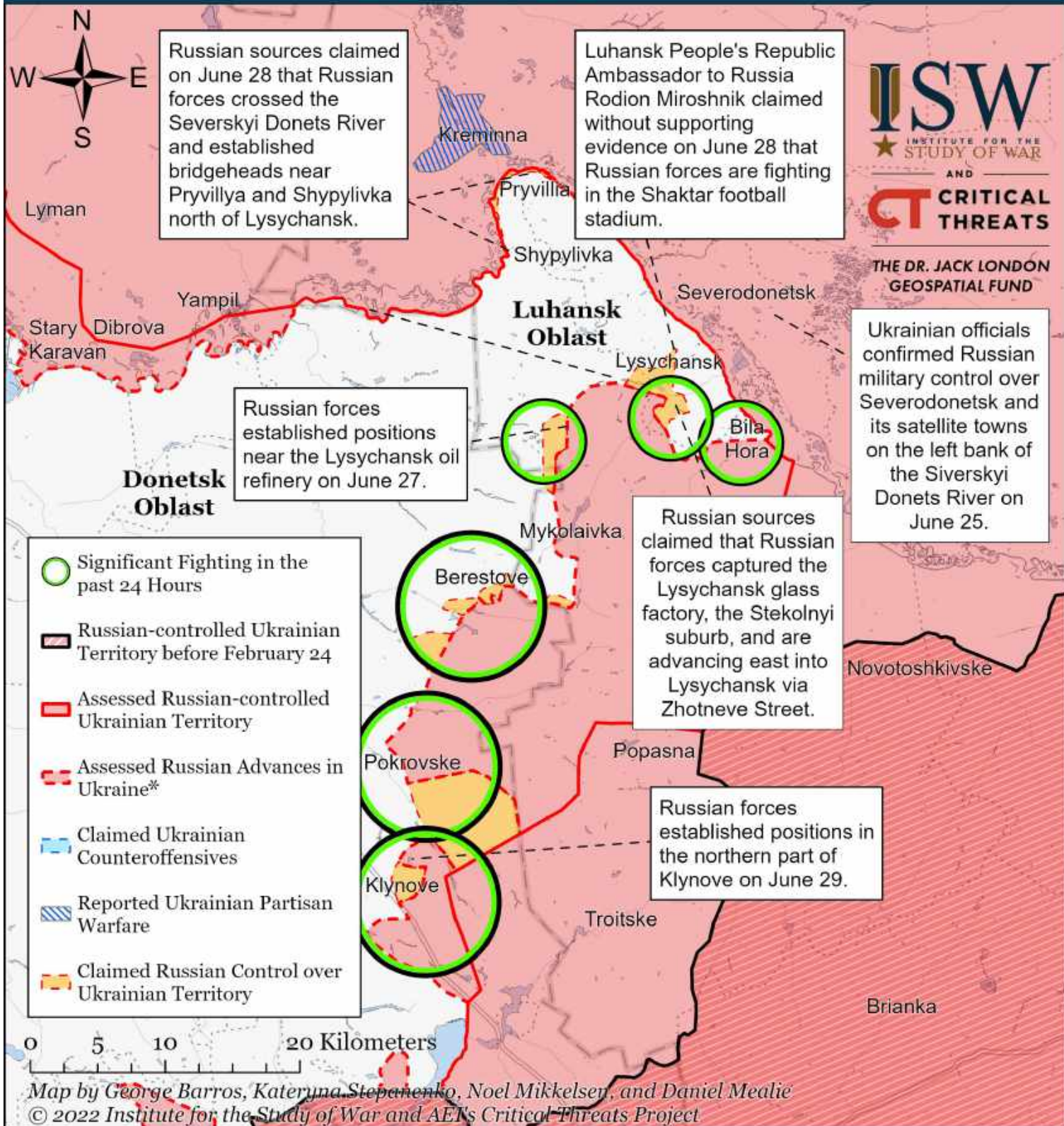


\* Assessed Russian advances are areas where ISW assesses Russian forces have operated in or launched attacks against but do not control.

Note: ISW extended Russian claimed control over the northern part of Pryvillya based on Chechen Republic Head Ramzan Kadyrov's claim that Russian forces established control over half of the settlement on June 30. We recessed assessed Russian advances from Kodema and Novoluhanske on June 29 after Russian sources stated that Ukrainian forces still control Kodema, Semihirya, Novoluhanske, and the Vuhledar Power Plant. Russian sources previously claimed that Russian forces controlled Kodema and Novoluhanske.



# Assessed Control of Terrain Around Severodonetsk as of June 29, 2022, 3:00 PM ET

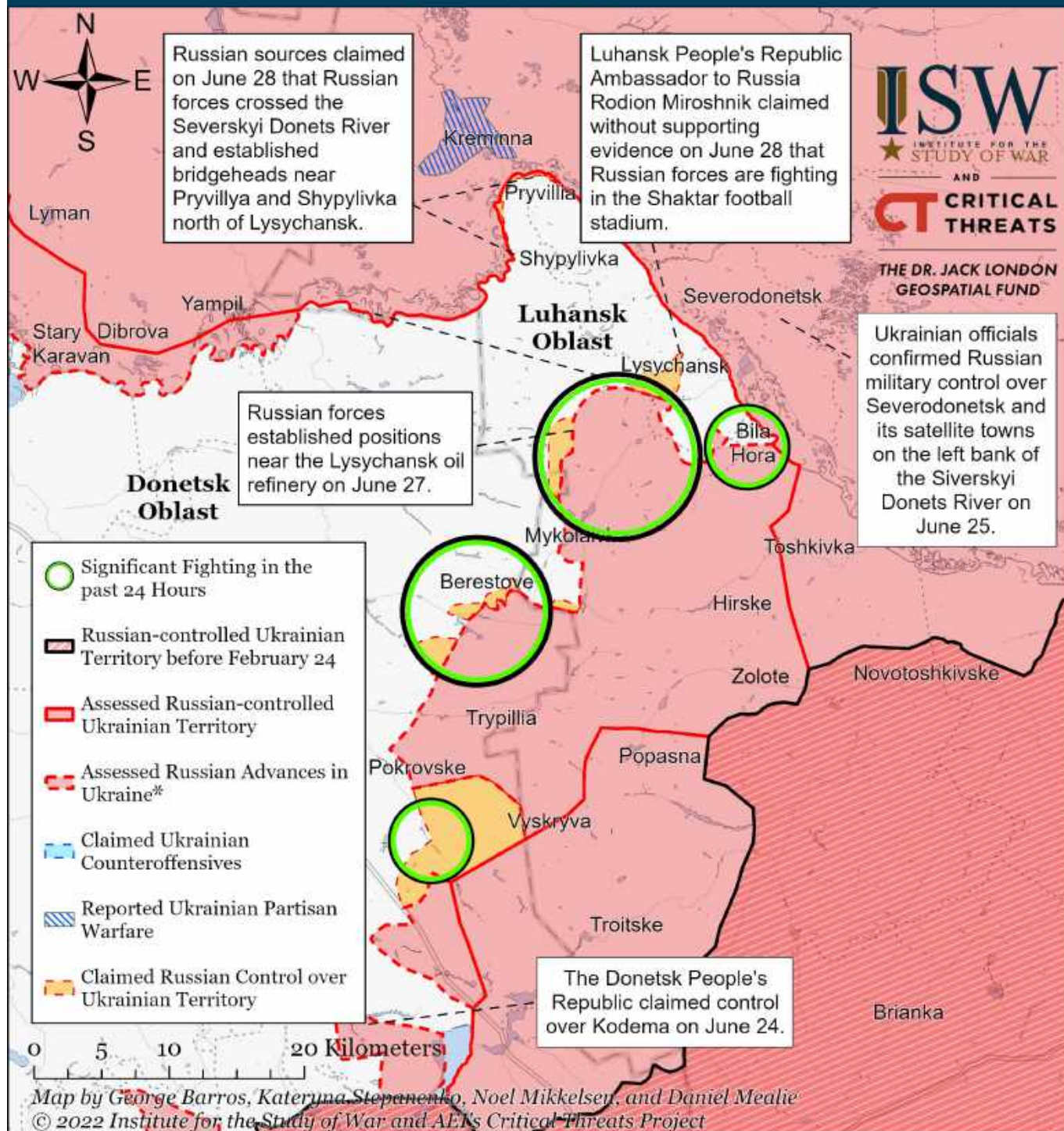


\* Assessed Russian advances are areas where ISW assesses Russian forces have operated in or launched attacks against but do not control.

Note: We reassessed assessed Russian advances from Kodema and Novoluhanske on June 29 after Russian sources stated that Ukrainian forces still control Kodema, Semihirya, Novoluhanske, and the Vuhledar Power Plant. Russian sources previously claimed that Russian forces controlled Kodema and Novoluhanske.



# Assessed Control of Terrain Around Severodonetsk as of June 28, 2022, 3:00 PM ET



**ISW**  
INSTITUTE FOR THE  
STUDY OF WAR  
AND  
**CT** CRITICAL  
THREATS  
THE DR. JACK LONDON  
GEOSPATIAL FUND

\* Assessed Russian advances are areas where ISW assesses Russian forces have operated in or launched attacks against but do not control.

Note: We refined our assessed frontline advances and updated Russian claims for the Lysychansk area after reconciling several sources on June 27 and 28. We recoded previous Russian claims south and southwest of Lysychansk to Russian advances given Luhansk Oblast Governor Serhiy Haidai stated that Russian forces are storming positions near southern and southwestern Lysychansk as of June 28. Haidai also stated that Russian and Ukrainian forces continued fighting between the Lysychansk oil refinery and Vovchovaryivka in an attempt to take over the Bakhmut – Lysychansk highway. The Ukrainian General Staff reported on June 27 that Russian forces led an offensive operation in the direction of Vovchovaryivka-Verkhokamyanka and had unspecified “partial success” and that Russian forces are securing positions south of the Lysychansk oil refinery. Russian Telegram channel Rybar claimed on June 27 that fighting is ongoing near Maloryazantseve and that Russian forces broke through Ukrainian defenses west of Vovchovaryivka and have captured part of the territory of the Lysychansk oil refinery.