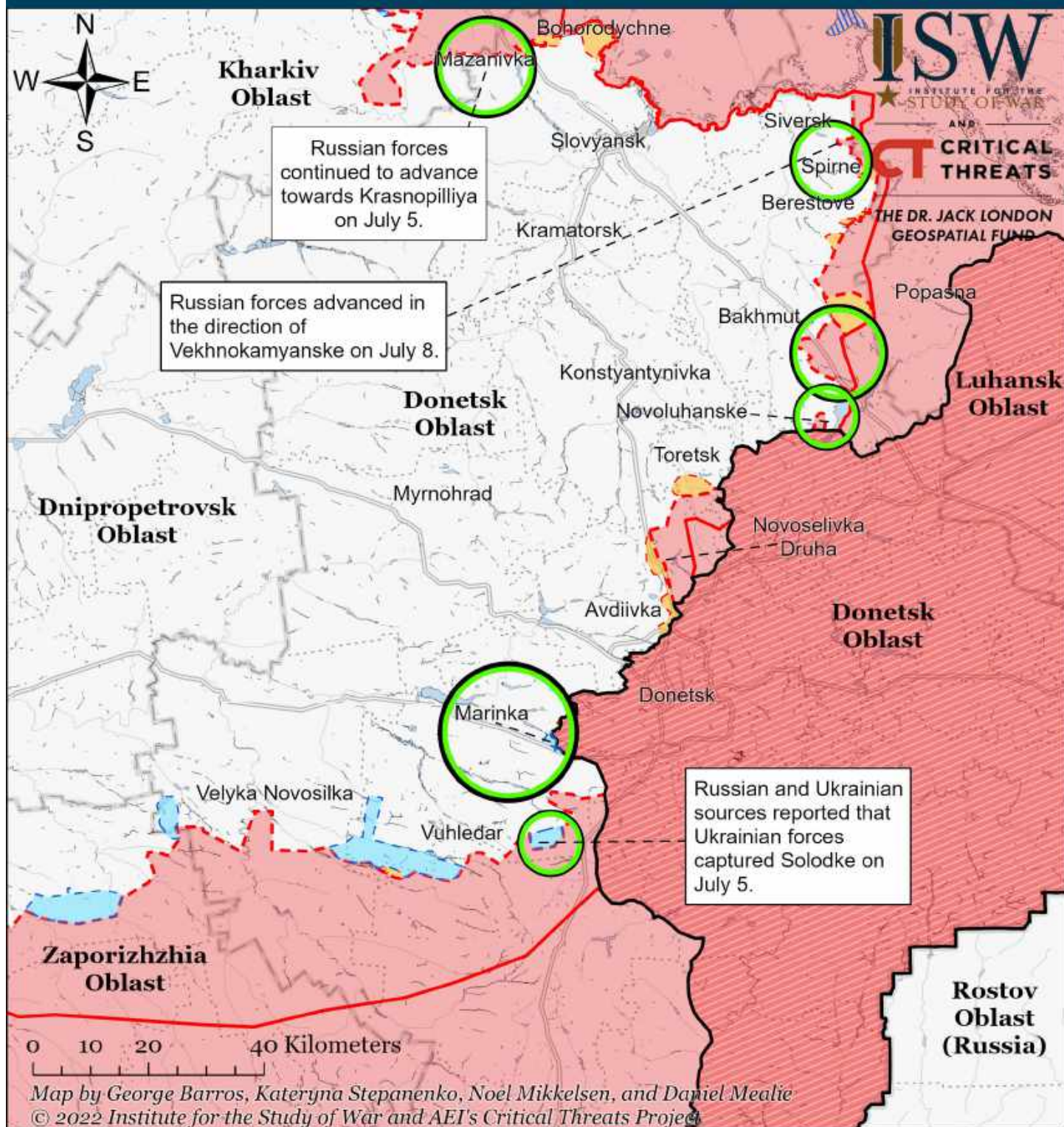


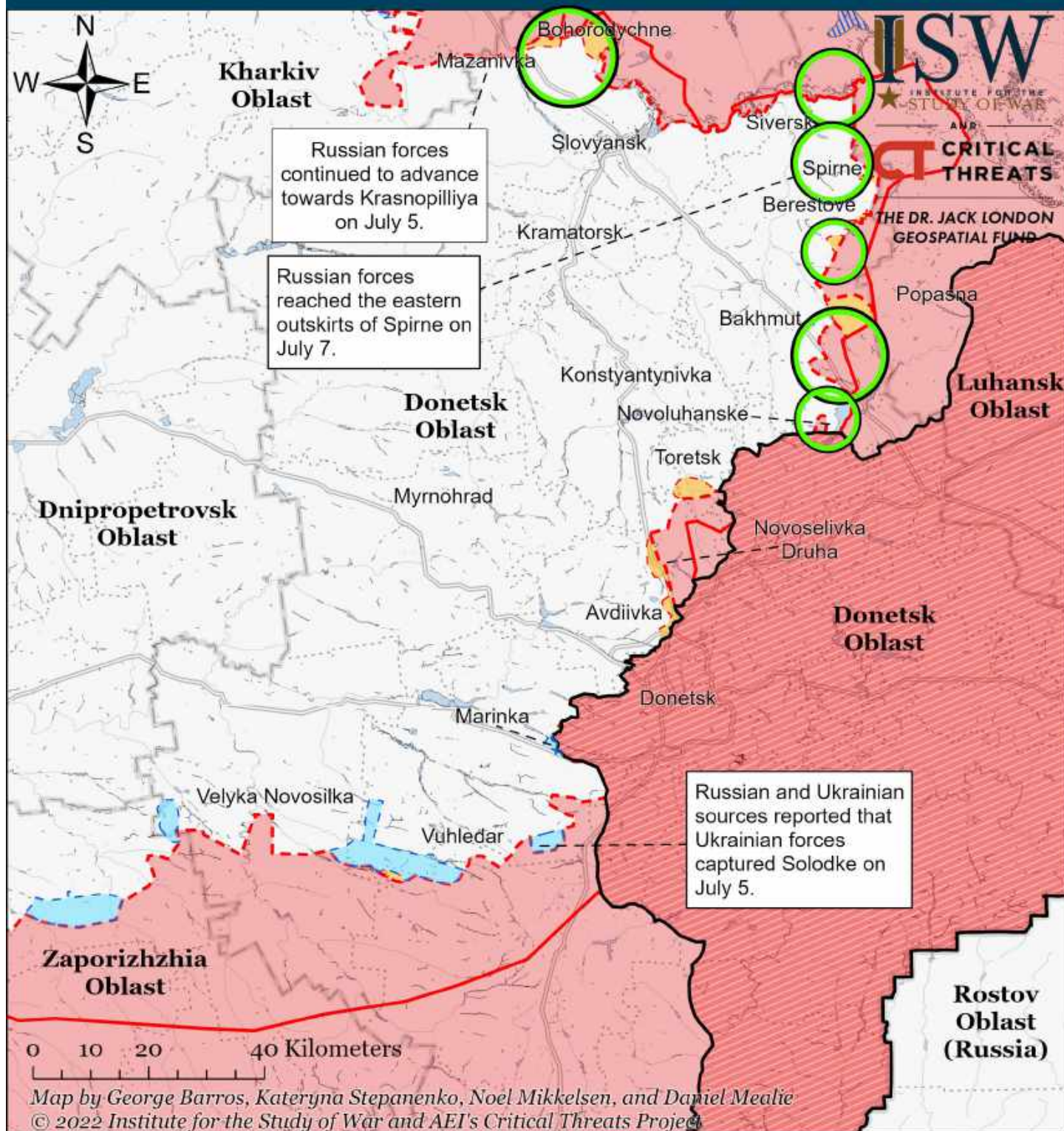
Assessed Control of Terrain Around Donetsk as of July 8, 2022, 3:00 PM ET



- Significant Fighting in the past 24 Hours
- Assessed Russian-controlled Ukrainian Territory
- Reported Ukrainian Partisan Warfare
- Russian-controlled Ukrainian Territory before February 24
- Claimed Russian Control over Ukrainian Territory
- Assessed Russian Advances in Ukraine*
- Claimed Ukrainian Counteroffensives

* Assessed Russian advances are areas where ISW assesses Russian forces have operated in or launched attacks against but do not control.

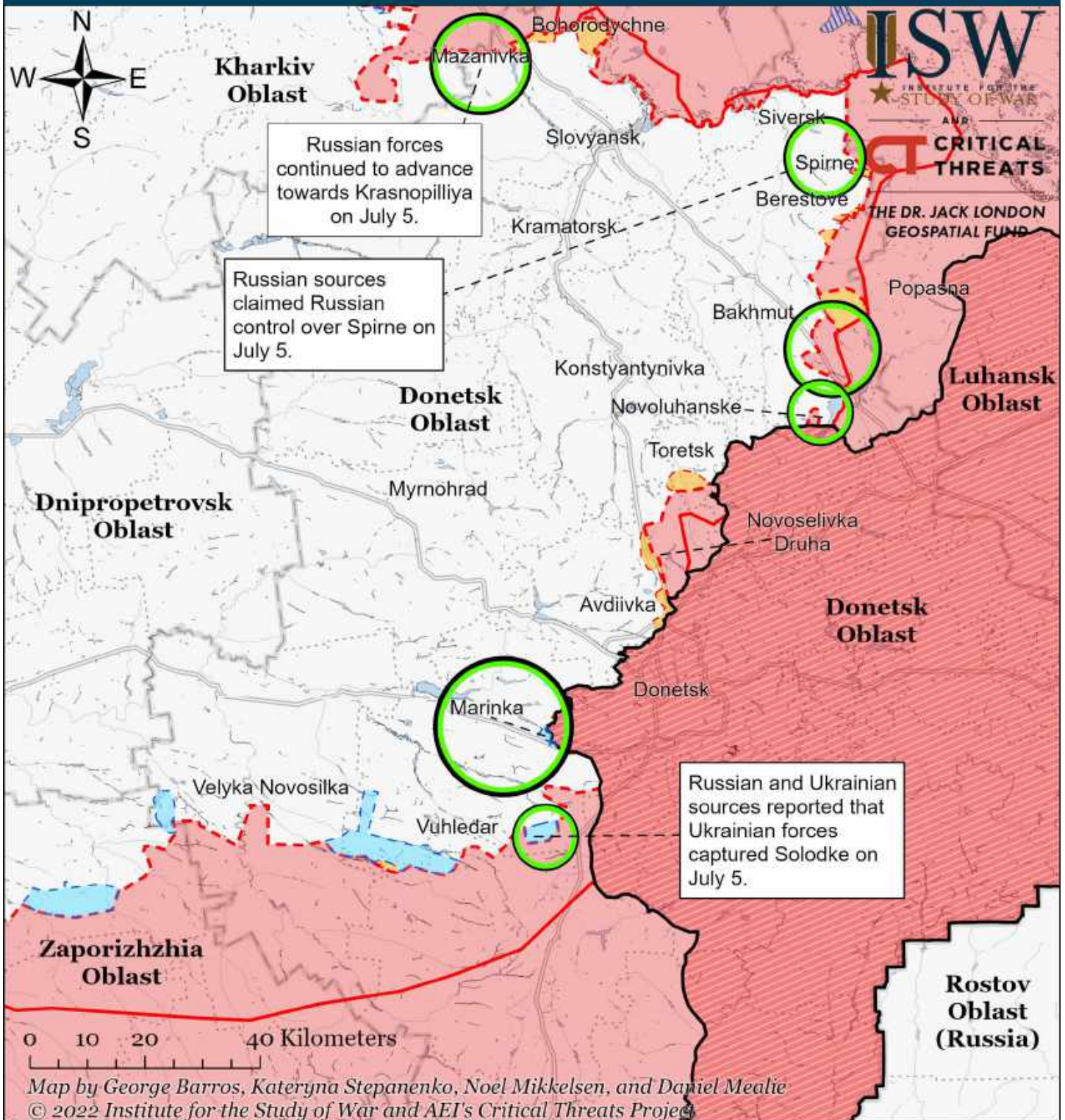
Assessed Control of Terrain Around Donetsk as of July 7, 2022, 3:00 PM ET



- Significant Fighting in the past 24 Hours
- Assessed Russian-controlled Ukrainian Territory
- Reported Ukrainian Partisan Warfare
- Russian-controlled Ukrainian Territory before February 24
- Claimed Russian Control over Ukrainian Territory
- Assessed Russian Advances in Ukraine*
- Claimed Ukrainian Counteroffensives

* Assessed Russian advances are areas where ISW assesses Russian forces have operated in or launched attacks against but do not control.

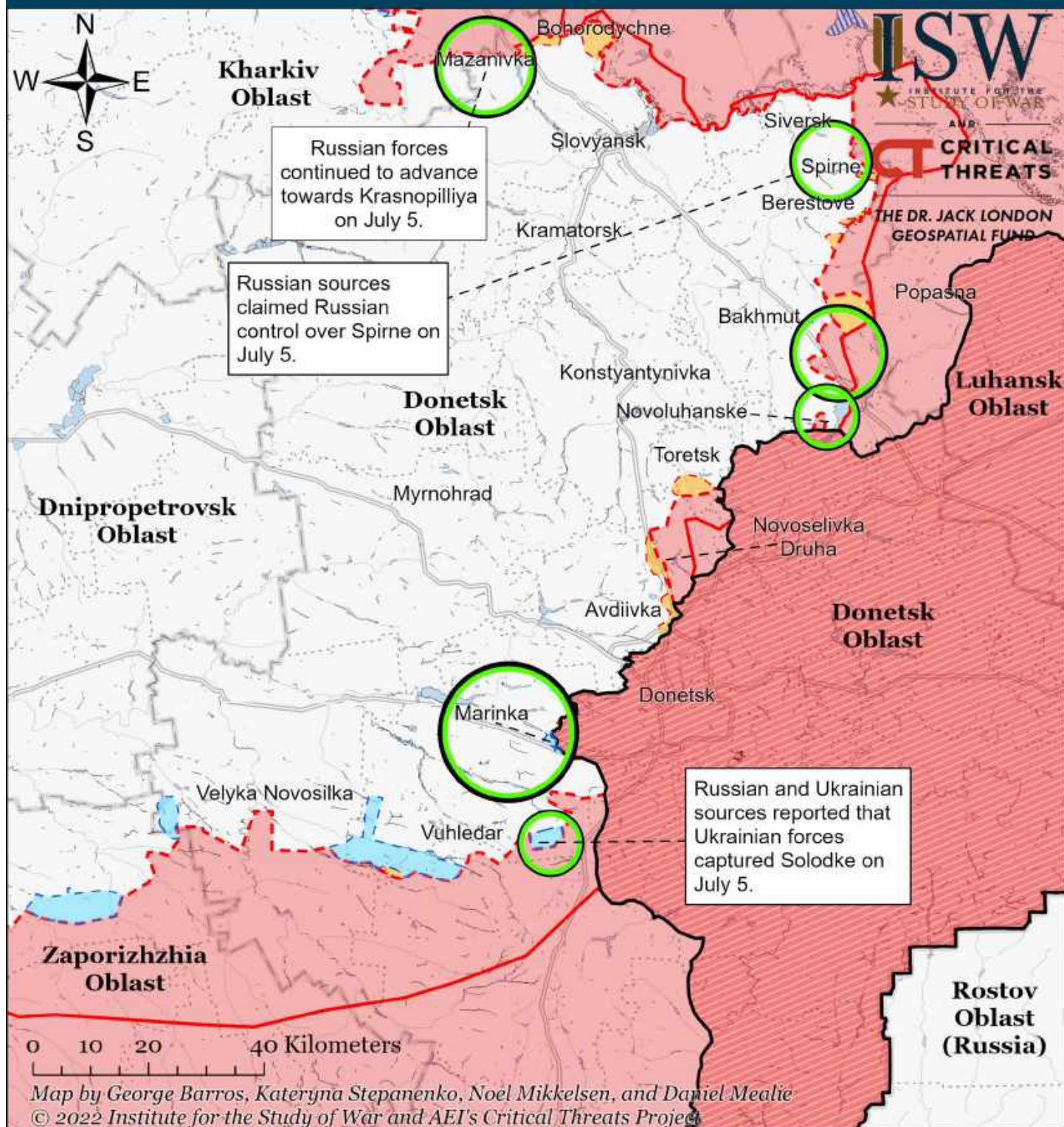
Assessed Control of Terrain Around Donetsk as of July 6, 2022, 3:00 PM ET



- Significant Fighting in the past 24 Hours
- Assessed Russian-controlled Ukrainian Territory
- Reported Ukrainian Partisan Warfare
- Russian-controlled Ukrainian Territory before February 24
- Claimed Russian Control over Ukrainian Territory
- Assessed Russian Advances in Ukraine*
- Claimed Ukrainian Counteroffensives

* Assessed Russian advances are areas where ISW assesses Russian forces have operated in or launched attacks against but do not control.

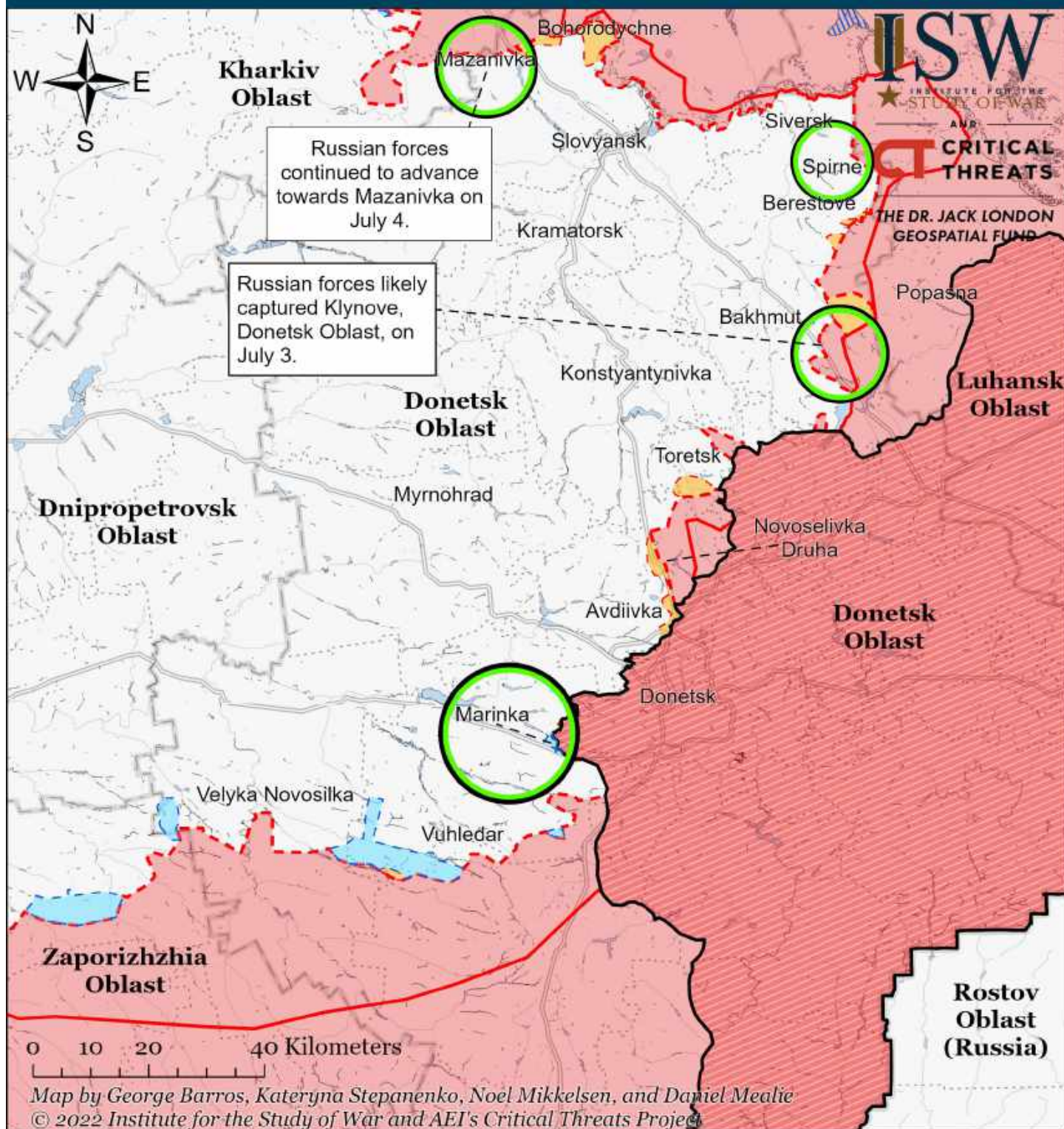
Assessed Control of Terrain Around Donetsk as of July 5, 2022, 3:00 PM ET



- | | | |
|---|--|-------------------------------------|
| Significant Fighting in the past 24 Hours | Assessed Russian-controlled Ukrainian Territory | Reported Ukrainian Partisan Warfare |
| Russian-controlled Ukrainian Territory before February 24 | Claimed Russian Control over Ukrainian Territory | |
| Assessed Russian Advances in Ukraine* | Claimed Ukrainian Counteroffensives | |

* Assessed Russian advances are areas where ISW assesses Russian forces have operated in or launched attacks against but do not control.

Assessed Control of Terrain Around Donetsk as of July 4, 2022, 3:00 PM ET



- Significant Fighting in the past 24 Hours
- Assessed Russian-controlled Ukrainian Territory
- Reported Ukrainian Partisan Warfare
- Russian-controlled Ukrainian Territory before February 24
- Claimed Russian Control over Ukrainian Territory
- Assessed Russian Advances in Ukraine*
- Claimed Ukrainian Counteroffensives

* Assessed Russian advances are areas where ISW assesses Russian forces have operated in or launched attacks against but do not control.

Assessed Control of Terrain in Ukraine and Main Russian Maneuver Axes as of July 8, 2022, 3:00 PM ET



Map by George Barros, Kateryna Stepanenko, Noel Mikkelsen, and Daniel Mealie
© 2022 Institute for the Study of War and AEI's Critical Threats Project

* Assessed Russian advances are areas where ISW assesses Russian forces have operated in or launched attacks against but do not control.

Assessed Control of Terrain in Ukraine and Main Russian Maneuver Axes as of July 7, 2022, 3:00 PM ET



Map by George Barros, Kateryna Stepanenko, Noel Mikkelsen, and Daniel Mealie
© 2022 Institute for the Study of War and AEI's Critical Threats Project

* Assessed Russian advances are areas where ISW assesses Russian forces have operated in or launched attacks against but do not control.

Assessed Control of Terrain in Ukraine and Main Russian Maneuver Axes as of July 6, 2022, 3:00 PM ET



Map by George Barros, Kateryna Stepanenko, Noel Mikkelsen, and Daniel Mealie
© 2022 Institute for the Study of War and AEI's Critical Threats Project

* Assessed Russian advances are areas where ISW assesses Russian forces have operated in or launched attacks against but do not control.

Assessed Control of Terrain in Ukraine and Main Russian Maneuver Axes as of July 5, 2022, 3:00 PM ET



Map by George Barros, Kateryna Stepanenko, Noel Mikkelsen, and Daniel Mealie
© 2022 Institute for the Study of War and AEI's Critical Threats Project

* Assessed Russian advances are areas where ISW assesses Russian forces have operated in or launched attacks against but do not control.

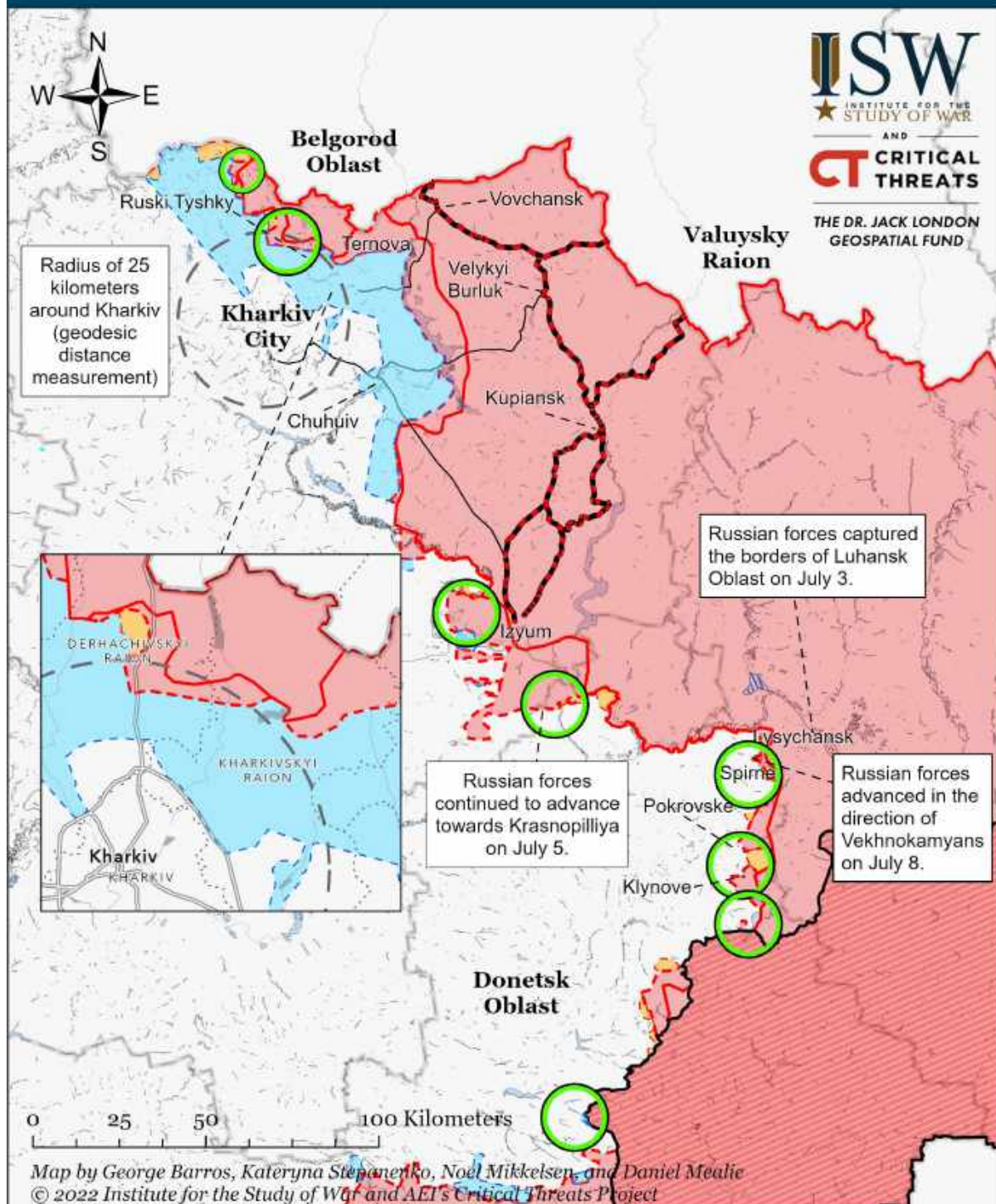
Assessed Control of Terrain in Ukraine and Main Russian Maneuver Axes as of July 4, 2022, 3:00 PM ET



Map by George Barros, Kateryna Stepanenko, Noel Mikkelsen, and Daniel Mealie
© 2022 Institute for the Study of War and AEI's Critical Threats Project

* Assessed Russian advances are areas where ISW assesses Russian forces have operated in or launched attacks against but do not control.

Assessed Control of Terrain Around Kharkiv as of July 8, 2022, 3:00 PM ET

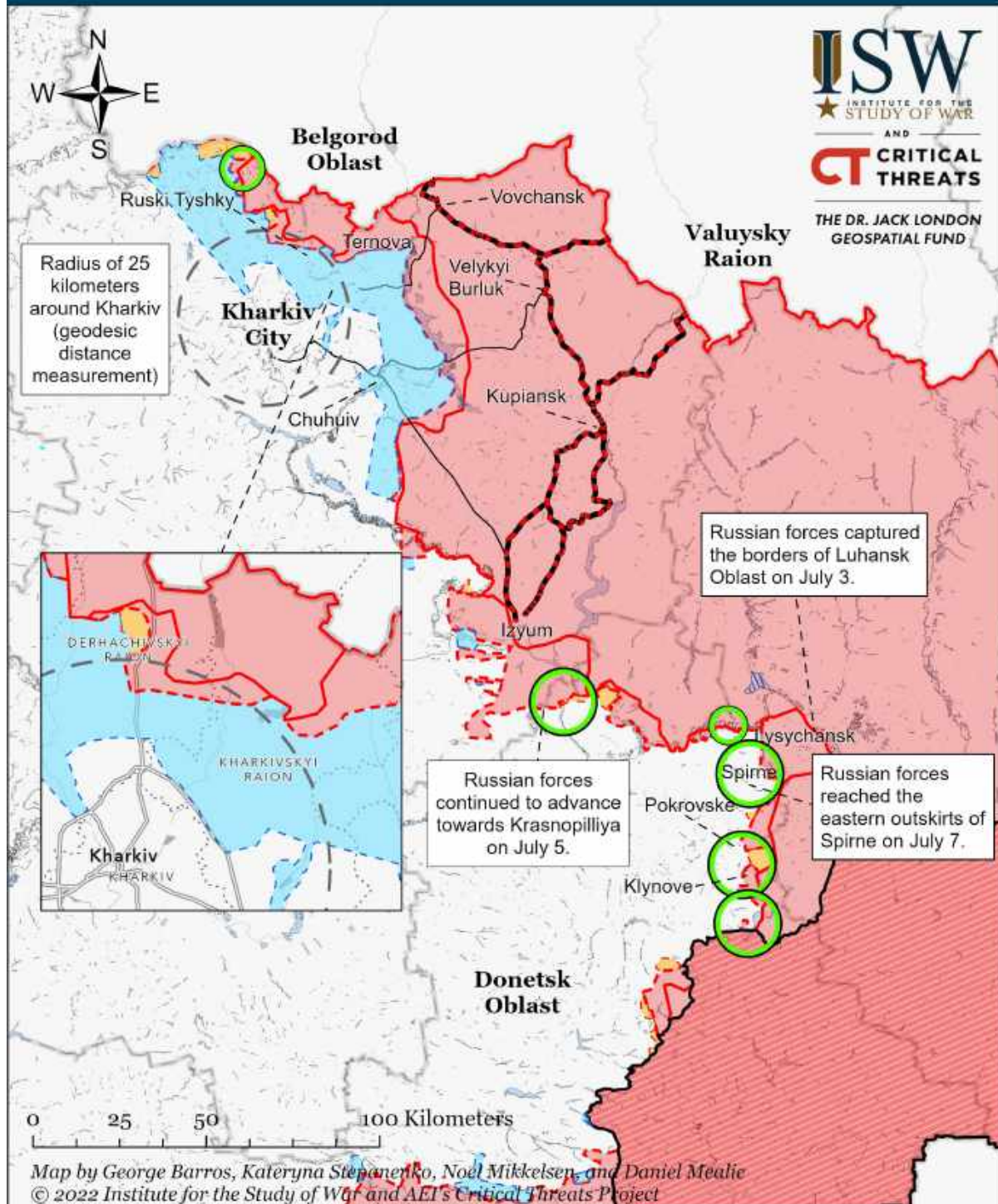


Significant Fighting in the past 24 Hours	Russian-controlled Ukrainian Territory before February 24	Claimed Russian Control over Ukrainian Territory
Key Ukrainian Roads	Assessed Russian Advances in Ukraine*	Claimed Ukrainian Counteroffensives
Russian Ground Lines of Communication	Assessed Russian-controlled Ukrainian Territory	Reported Ukrainian Partisan Warfare

* Assessed Russian advances are areas where ISW assesses Russian forces have operated in or launched attacks against but do not control.

Note: Ukrainian Deputy Defense Minister Hanna Malyar stated on June 20 that Ukrainian forces have nearly reached the Ukrainian-Russian border. ISW will map Ukrainian counteroffensives when we observe corroborating evidence. We expanded Ukrainian counteroffensives in Rtyshchivka, just southwest of Chuhuiv, based on the Ukrainian General Staff report that Ukrainian forces repulsed a Russian reconnaissance-in-force attempt on the settlement on June 20.

Assessed Control of Terrain Around Kharkiv as of July 7, 2022, 3:00 PM ET

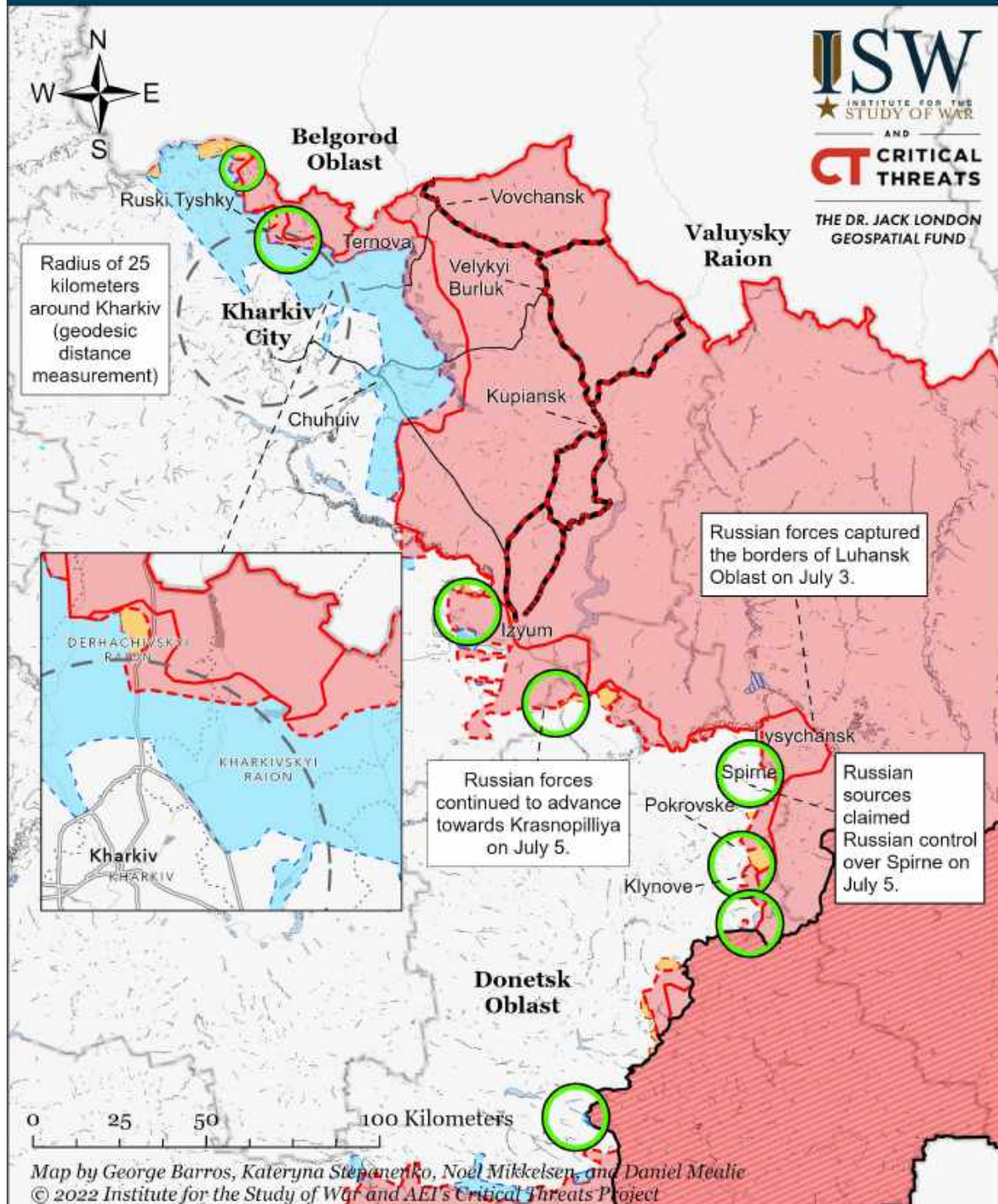


Significant Fighting in the past 24 Hours	Russian-controlled Ukrainian Territory before February 24	Claimed Russian Control over Ukrainian Territory
Key Ukrainian Roads	Assessed Russian Advances in Ukraine*	Claimed Ukrainian Counteroffensives
Russian Ground Lines of Communication	Assessed Russian-controlled Ukrainian Territory	Reported Ukrainian Partisan Warfare

* Assessed Russian advances are areas where ISW assesses Russian forces have operated in or launched attacks against but do not control.

Note: Ukrainian Deputy Defense Minister Hanna Malyar stated on June 20 that Ukrainian forces have nearly reached the Ukrainian-Russian border. ISW will map Ukrainian counteroffensives when we observe corroborating evidence. We expanded Ukrainian counteroffensives in Rtyshchivka, just southwest of Chuhuiv, based on the Ukrainian General Staff report that Ukrainian forces repulsed a Russian reconnaissance-in-force attempt on the settlement on June 20.

Assessed Control of Terrain Around Kharkiv as of July 6, 2022, 3:00 PM ET

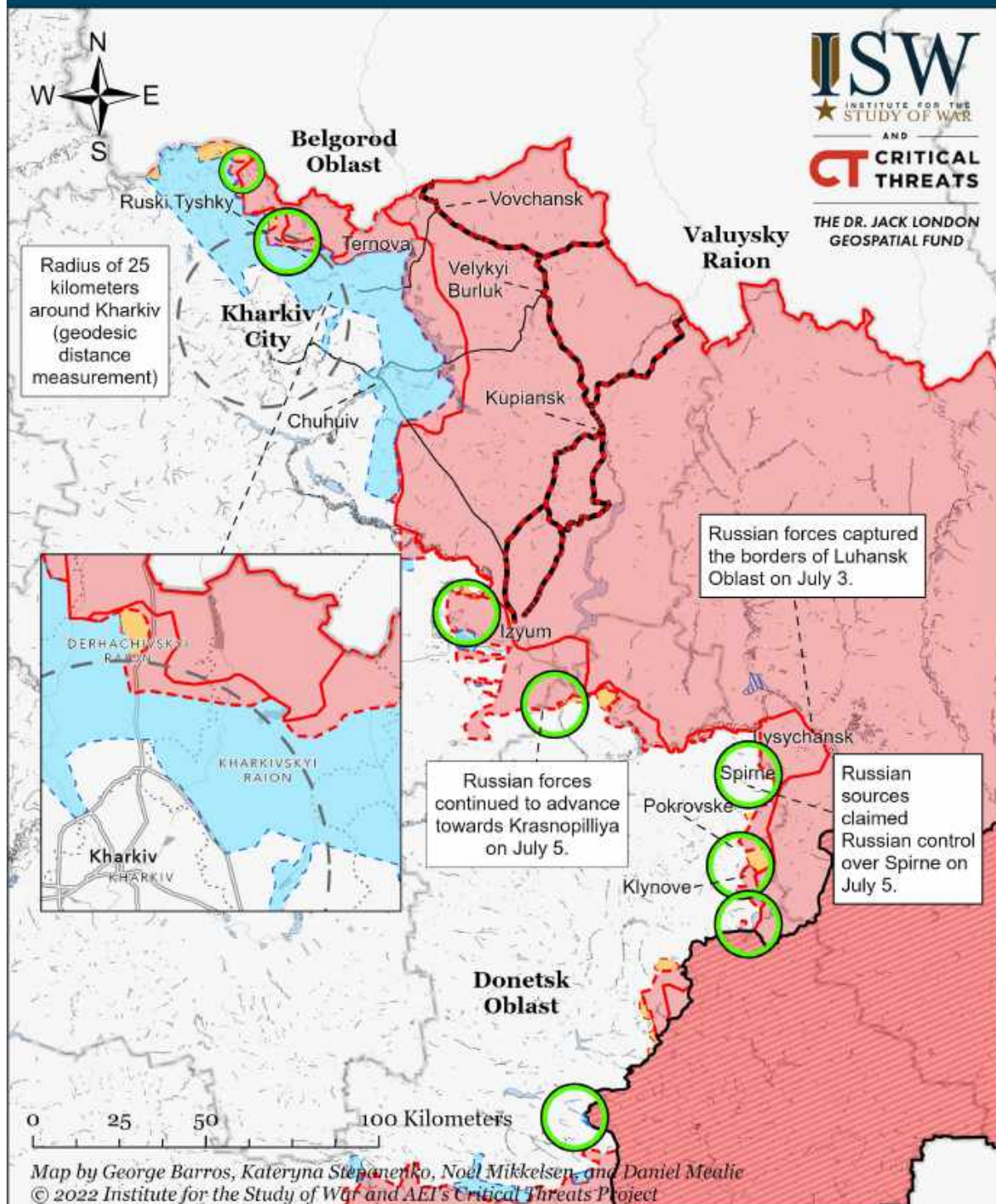


Significant Fighting in the past 24 Hours	Russian-controlled Ukrainian Territory before February 24	Claimed Russian Control over Ukrainian Territory
Key Ukrainian Roads	Assessed Russian Advances in Ukraine*	Claimed Ukrainian Counteroffensives
Russian Ground Lines of Communication	Assessed Russian-controlled Ukrainian Territory	Reported Ukrainian Partisan Warfare

* Assessed Russian advances are areas where ISW assesses Russian forces have operated in or launched attacks against but do not control.

Note: Ukrainian Deputy Defense Minister Hanna Malyar stated on June 20 that Ukrainian forces have nearly reached the Ukrainian-Russian border. ISW will map Ukrainian counteroffensives when we observe corroborating evidence. We expanded Ukrainian counteroffensives in Rtyshchivka, just southwest of Chuhuiv, based on the Ukrainian General Staff report that Ukrainian forces repulsed a Russian reconnaissance-in-force attempt on the settlement on June 20.

Assessed Control of Terrain Around Kharkiv as of July 5, 2022, 3:00 PM ET

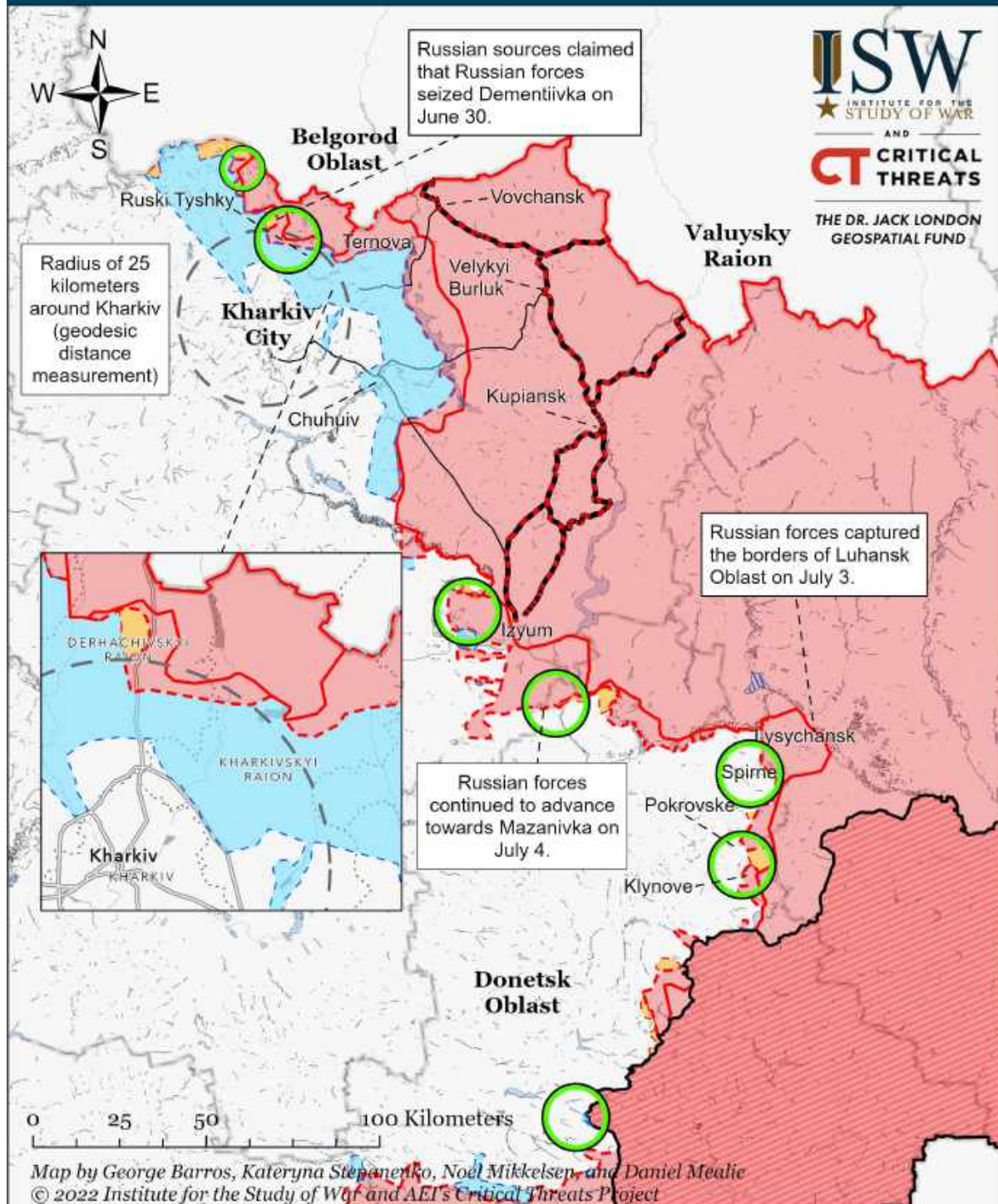


Significant Fighting in the past 24 Hours	Russian-controlled Ukrainian Territory before February 24	Claimed Russian Control over Ukrainian Territory
Key Ukrainian Roads	Assessed Russian Advances in Ukraine*	Claimed Ukrainian Counteroffensives
Russian Ground Lines of Communication	Assessed Russian-controlled Ukrainian Territory	Reported Ukrainian Partisan Warfare

* Assessed Russian advances are areas where ISW assesses Russian forces have operated in or launched attacks against but do not control.

Note: Ukrainian Deputy Defense Minister Hanna Malyar stated on June 20 that Ukrainian forces have nearly reached the Ukrainian-Russian border. ISW will map Ukrainian counteroffensives when we observe corroborating evidence. We expanded Ukrainian counteroffensives in Rtyshchivka, just southwest of Chuhuiv, based on the Ukrainian General Staff report that Ukrainian forces repulsed a Russian reconnaissance-in-force attempt on the settlement on June 20.

Assessed Control of Terrain Around Kharkiv as of July 4, 2022, 3:00 PM ET

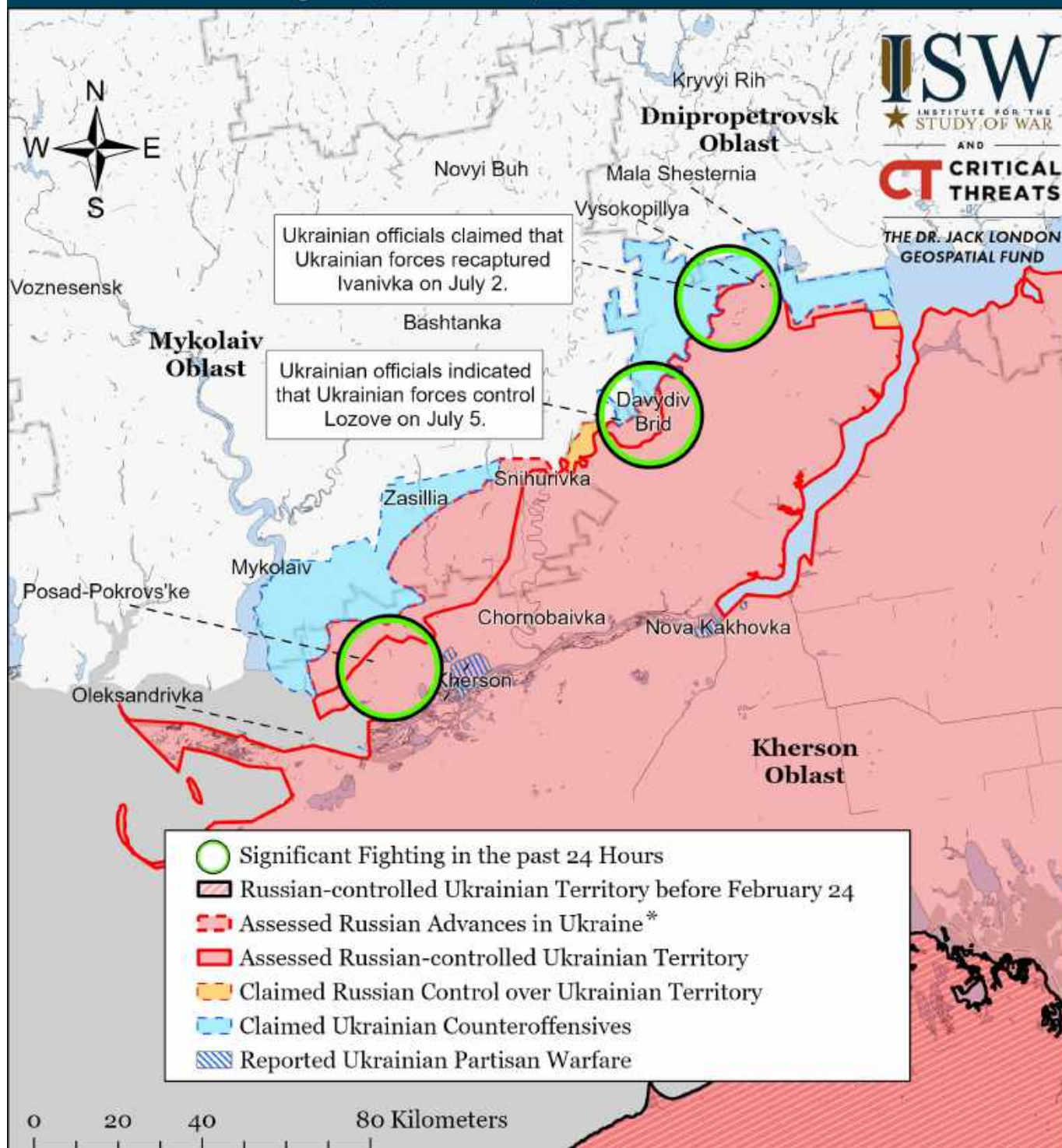


Significant Fighting in the past 24 Hours	Russian-controlled Ukrainian Territory before February 24	Claimed Russian Control over Ukrainian Territory
Key Ukrainian Roads	Assessed Russian Advances in Ukraine*	Claimed Ukrainian Counteroffensives
Russian Ground Lines of Communication	Assessed Russian-controlled Ukrainian Territory	Reported Ukrainian Partisan Warfare

* Assessed Russian advances are areas where ISW assesses Russian forces have operated in or launched attacks against but do not control.

Note: Ukrainian Deputy Defense Minister Hanna Malyar stated on June 20 that Ukrainian forces have nearly reached the Ukrainian-Russian border. ISW will map Ukrainian counteroffensives when we observe corroborating evidence. We expanded Ukrainian counteroffensives in Rtyshchivka, just southwest of Chuhuiv, based on the Ukrainian General Staff report that Ukrainian forces repulsed a Russian reconnaissance-in-force attempt on the settlement on June 20.

Assessed Control of Terrain Around Kherson and Mykolaiv as of July 8, 2022, 3:00 PM ET

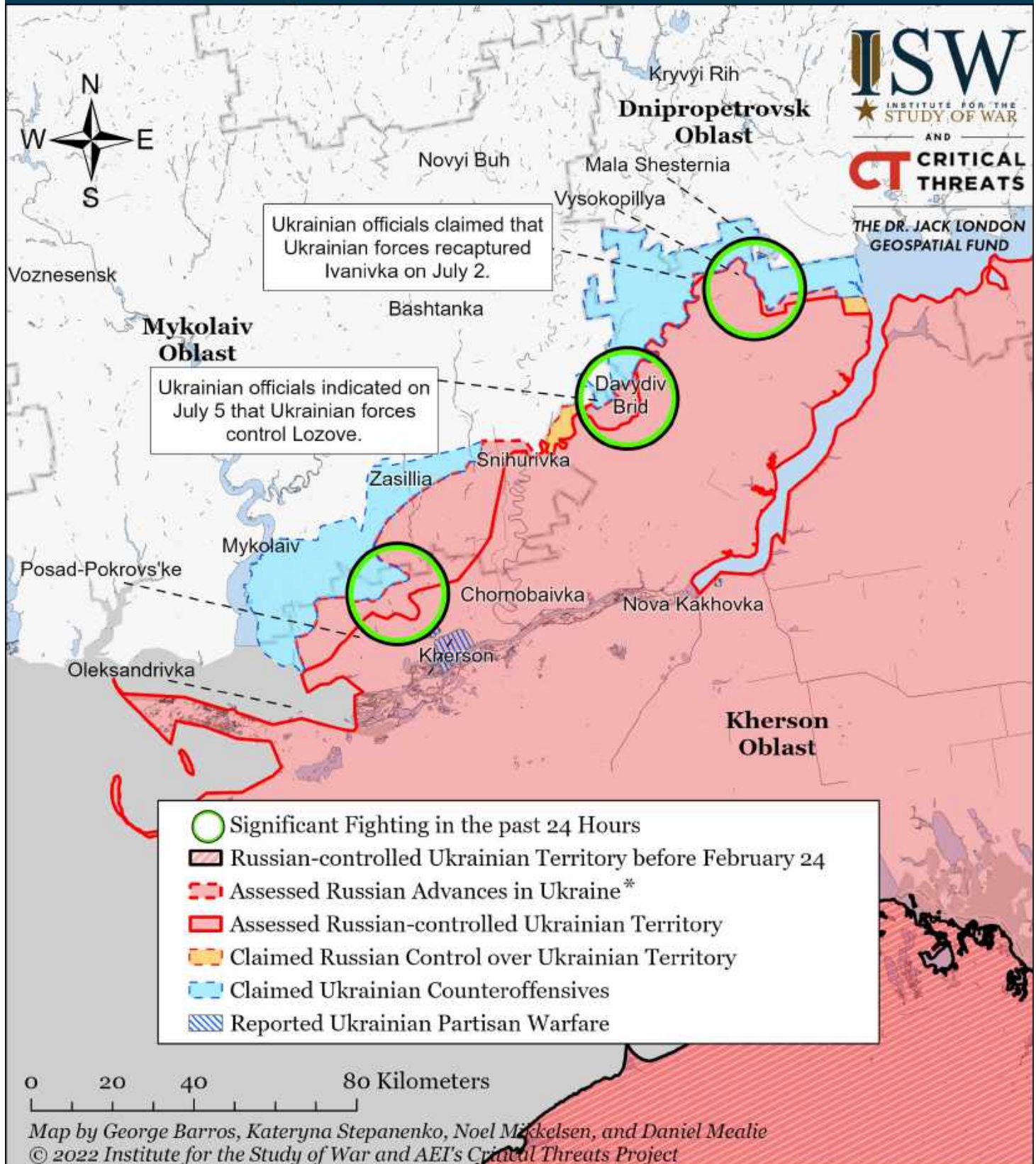


Map by George Barros, Kateryna Stepanenko, Noel Mikkelsen, and Daniel Mealie
© 2022 Institute for the Study of War and AEI's Critical Threats Project

* Assessed Russian advances are areas where ISW assesses Russian forces have operated in or launched attacks against but do not control.

Note: ISW expanded Ukrainian counteroffensives to Lozove on the left bank of the Inhulets River on July 5. The Ukrainian General Staff reported on July 6 that Ukrainian forces repelled a Russian offensive in the direction of Lozove in Kherson Oblast, indicating that Ukrainian forces still maintain a position there. Russian Telegram Channel Rybar claimed that Ukrainian forces launched unsuccessful attacks on the Snihurivka-Lozove-Bila Krynytsya line on July 4. Ukraine's Southern Operational Command stated on July 5 that Ukrainian forces repelled a Russian platoon counterattack in the Lozove area, indicating that Ukrainian forces are in Lozove. Ukrainian combat footage posted in mid-June showed Ukrainian forces shelling Russian positions near Lozove. NASA FIRMS data for July 5 shows heat anomaly concentrations south of Lozove consistent with the Ukraine's Southern Operational Command report. We will update our maps as we collect and confirm more information.

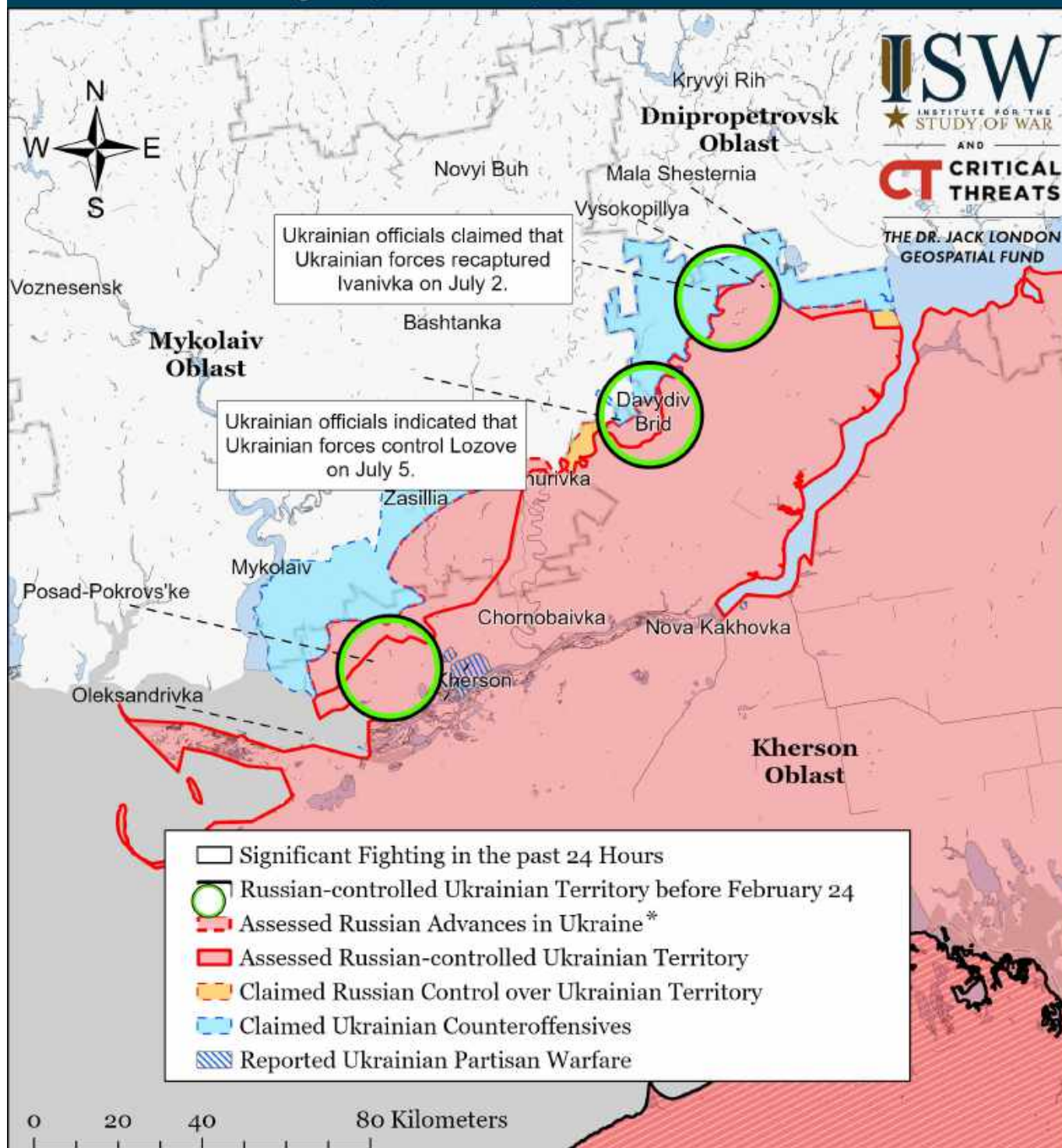
Assessed Control of Terrain Around Kherson and Mykolaiv as of July 7, 2022, 3:00 PM ET



* Assessed Russian advances are areas where ISW assesses Russian forces have operated in or launched attacks against but do not control.

Note: ISW expanded Ukrainian counteroffensives to Myrolyubivka in northwestern Kherson Oblast based on the Ukrainian Southern Operational Command report that Russian elements (up to rifle platoon sized unit) unsuccessfully attempted to launch an assault in the direction of the settlement on July 6. The phrasing implies that Russian forces are not in control of the settlement. We will refine our maps as we collect and confirm more information.

Assessed Control of Terrain Around Kherson and Mykolaiv as of July 6, 2022, 3:00 PM ET

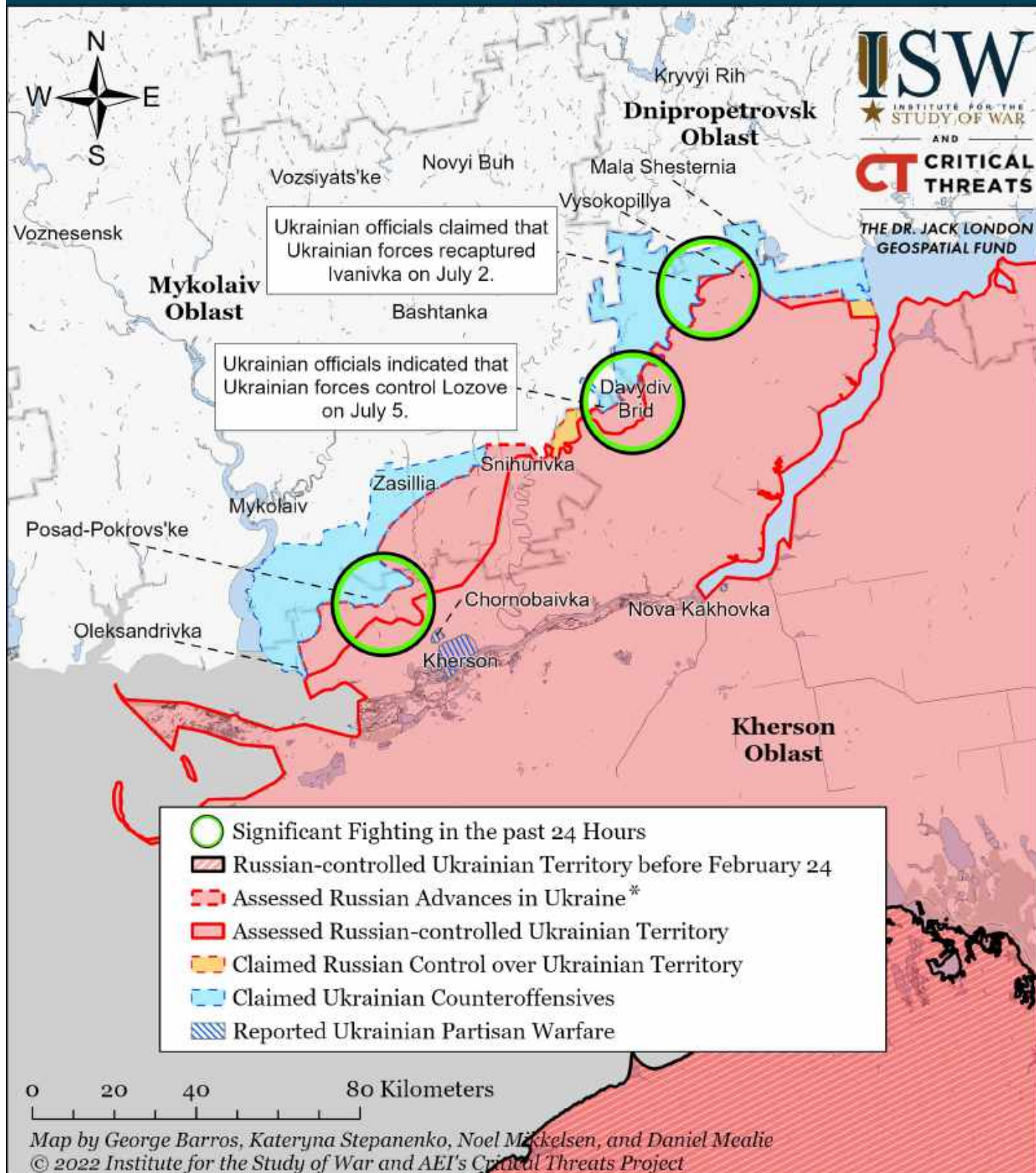


Map by George Barros, Kateryna Stepanenko, Noel Mikkelsen, and Daniel Mealie
© 2022 Institute for the Study of War and AEI's Critical Threats Project

* Assessed Russian advances are areas where ISW assesses Russian forces have operated in or launched attacks against but do not control.

Note: ISW expanded Ukrainian counteroffensives to Lozove on the left bank of the Inhulets River on July 5. The Ukrainian General Staff reported on July 6 that Ukrainian forces repelled a Russian offensive in the direction of Lozove in Kherson Oblast, indicating that Ukrainian forces still maintain a position there. Russian Telegram Channel Rybar claimed that Ukrainian forces launched unsuccessful attacks on the Snihurivka-Lozove-Bila Krynytsya line on July 4. Ukraine's Southern Operational Command stated on July 5 that Ukrainian forces repelled a Russian platoon counterattack in the Lozove area, indicating that Ukrainian forces are in Lozove. Ukrainian combat footage posted in mid-June showed Ukrainian forces shelling Russian positions near Lozove. NASA FIRMS data for July 5, shows heat anomaly concentrations south of Lozove consistent with the Ukraine's Southern Operational Command report. We will update our maps as we collect and confirm more information.

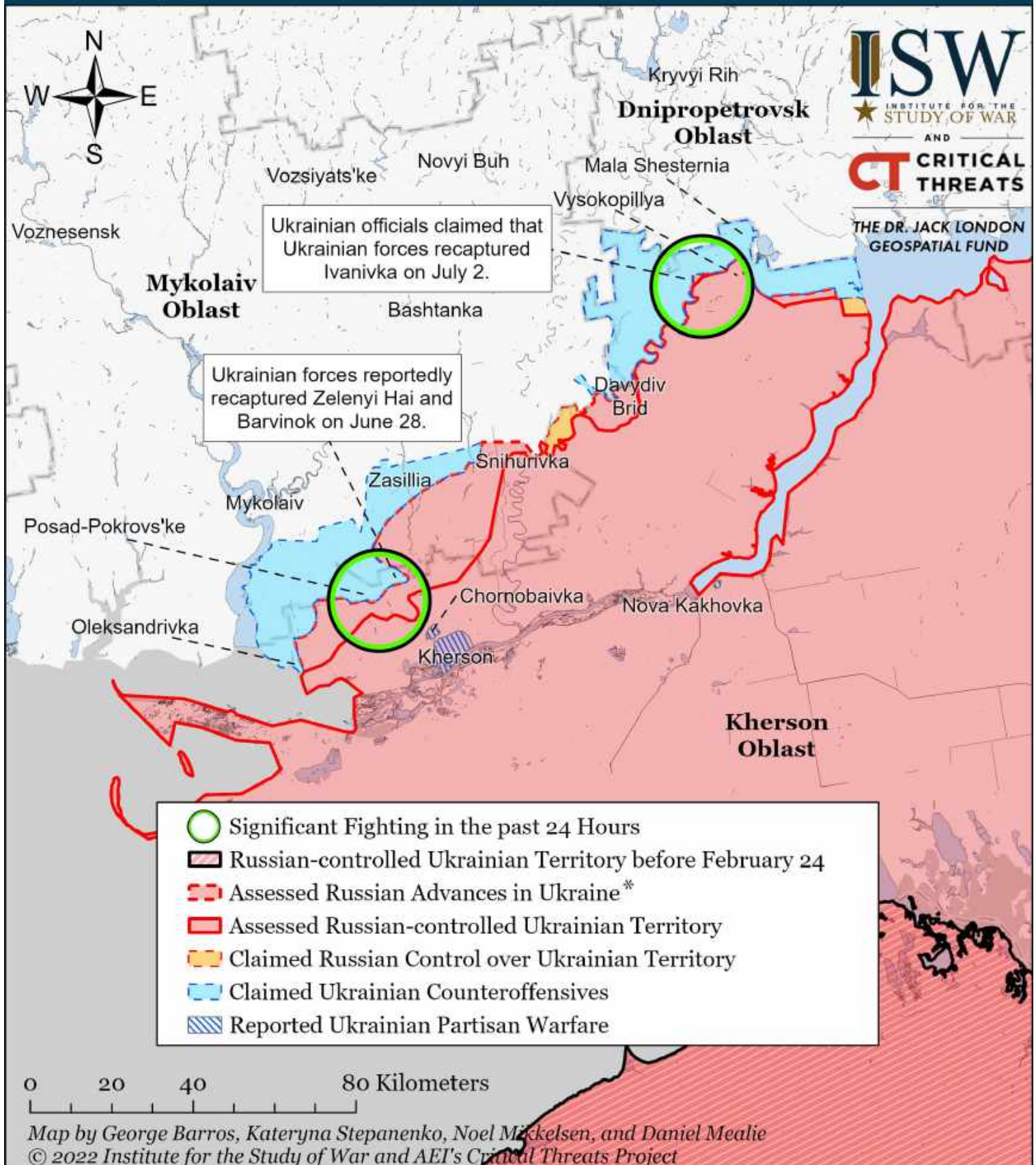
Assessed Control of Terrain Around Kherson and Mykolaiv as of July 5, 2022, 3:00 PM ET



* Assessed Russian advances are areas where ISW assesses Russian forces have operated in or launched attacks against but do not control.

Note: ISW expanded Ukrainian counteroffensives to Lozove on the left bank of the Inhulets River on July 5. Russian Telegram Channel Rybar claimed that Ukrainian forces launched unsuccessful attacks on the Snihurivka-Lozove-Bila Krynytsya line on July 4. Ukraine's Southern Operational Command stated on July 5 that Ukrainian forces repelled a Russian platoon counterattack in the Lozove area, indicating that Ukrainian forces are in Lozove. Ukrainian combat footage posted in mid-June showed Ukrainian forces shelling Russian positions near Lozove. NASA FIRMS data for July 5, shows heat anomaly concentrations south of Lozove consistent with the Ukrainian Operational South report. We will update our maps as we collect and confirm more information.

Assessed Control of Terrain Around Kherson and Mykolaiv as of July 4, 2022, 3:00 PM ET



* Assessed Russian advances are areas where ISW assesses Russian forces have operated in or launched attacks against but do not control.