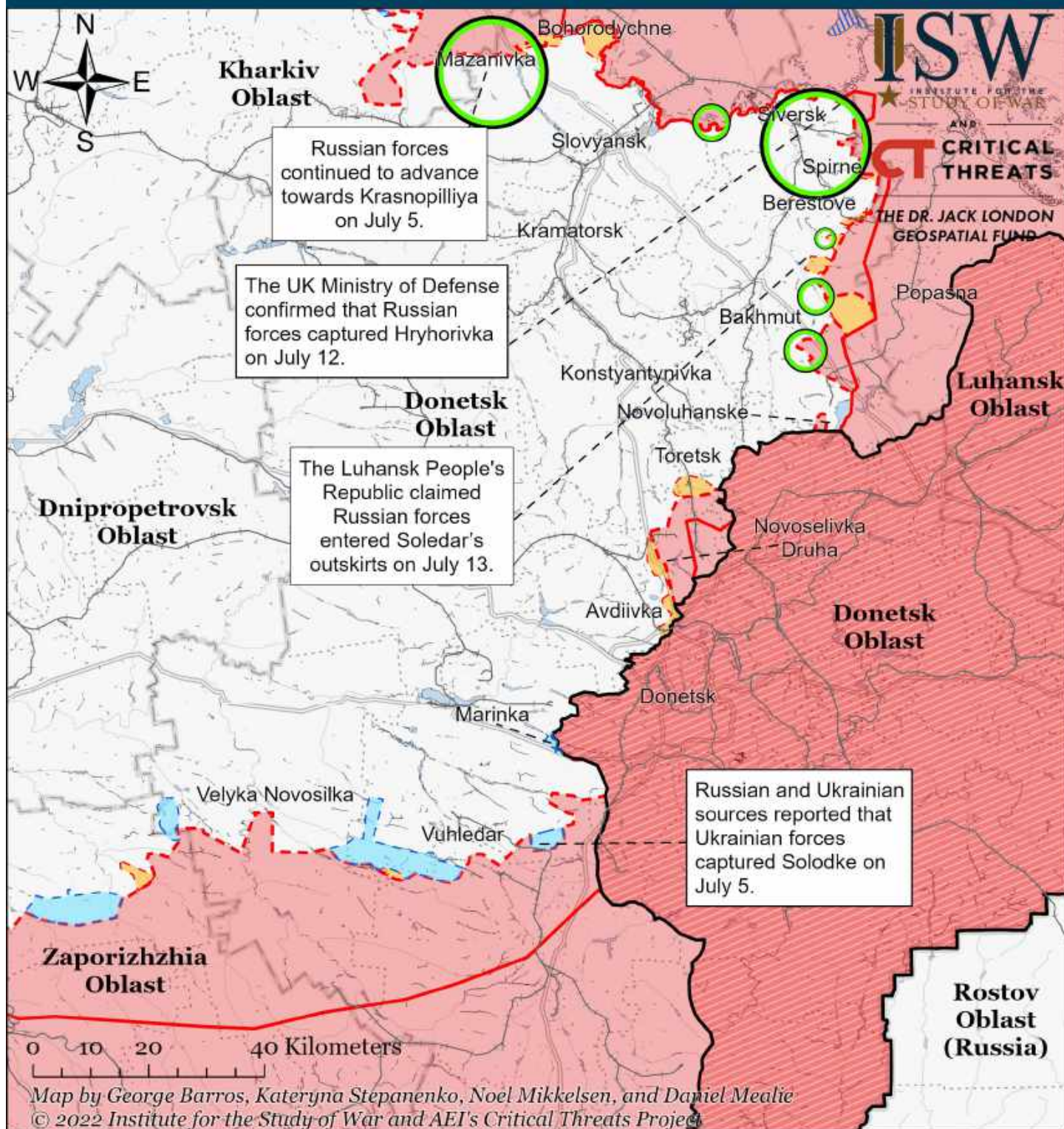


# Assessed Control of Terrain Around Donetsk as of July 13, 2022, 3:00 PM ET

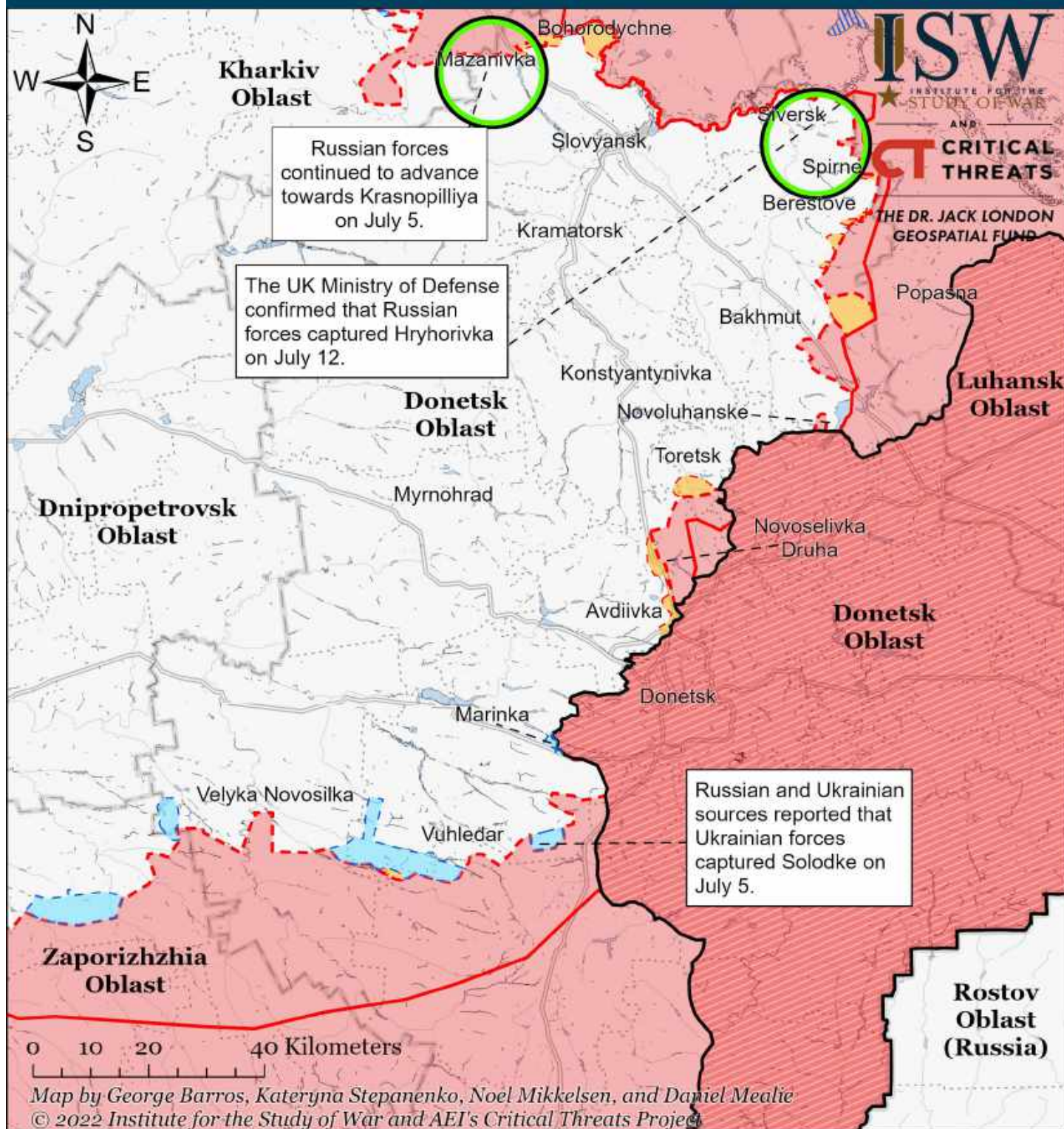


- Significant Fighting in the past 24 Hours
- Assessed Russian-controlled Ukrainian Territory
- Reported Ukrainian Partisan Warfare
- Russian-controlled Ukrainian Territory before February 24
- Claimed Russian Control over Ukrainian Territory
- Major Railroads
- - - Assessed Russian Advances in Ukraine\*
- Claimed Ukrainian Counteroffensives

\* Assessed Russian advances are areas where ISW assesses Russian forces have operated in or launched attacks against but do not control.



# Assessed Control of Terrain Around Donetsk as of July 12, 2022, 3:00 PM ET

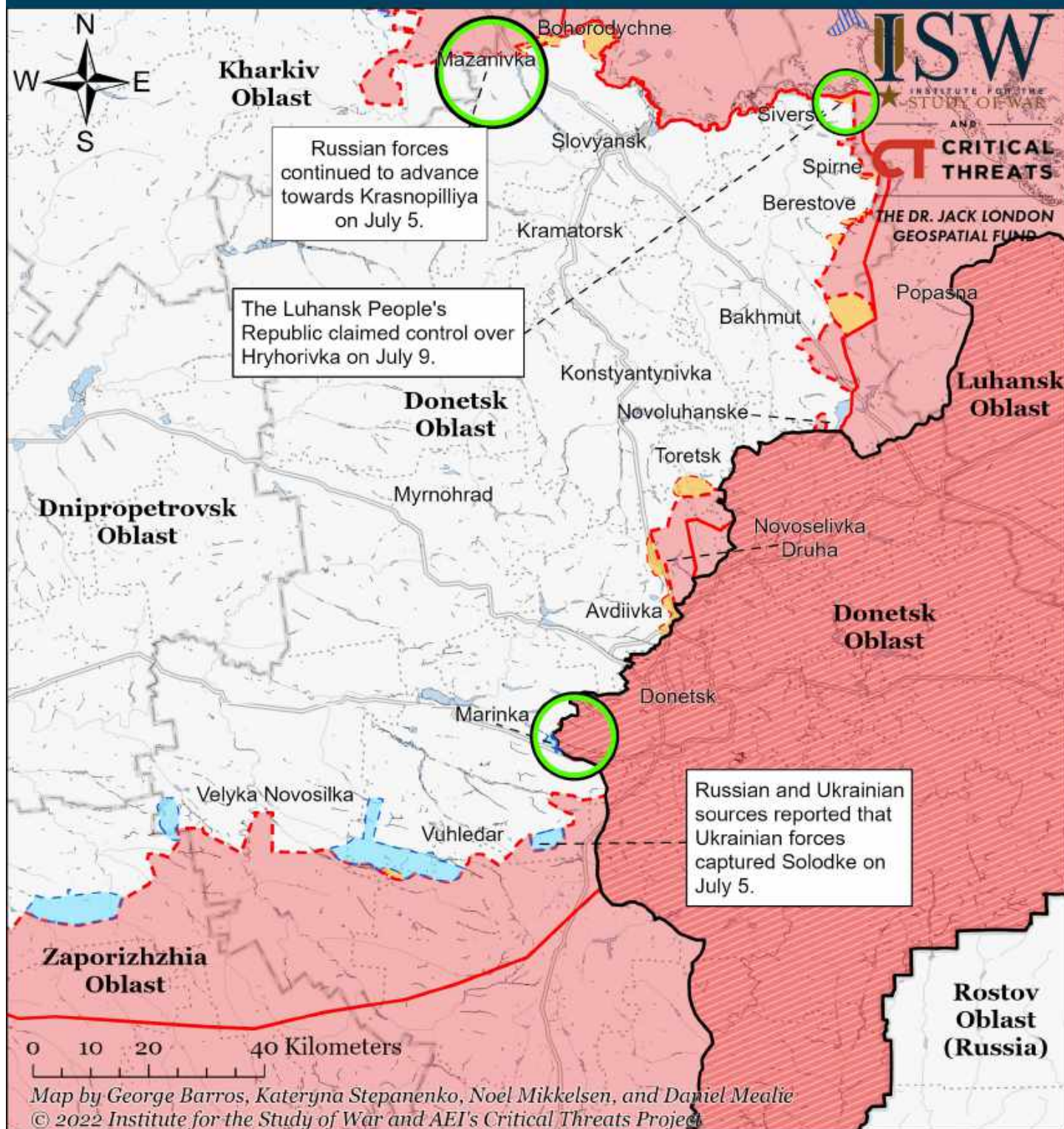


- Significant Fighting in the past 24 Hours
- Assessed Russian-controlled Ukrainian Territory
- Reported Ukrainian Partisan Warfare
- Russian-controlled Ukrainian Territory before February 24
- Claimed Russian Control over Ukrainian Territory
- - - Assessed Russian Advances in Ukraine\*
- Claimed Ukrainian Counteroffensives

\* Assessed Russian advances are areas where ISW assesses Russian forces have operated in or launched attacks against but do not control.



# Assessed Control of Terrain Around Donetsk as of July 11, 2022, 3:00 PM ET

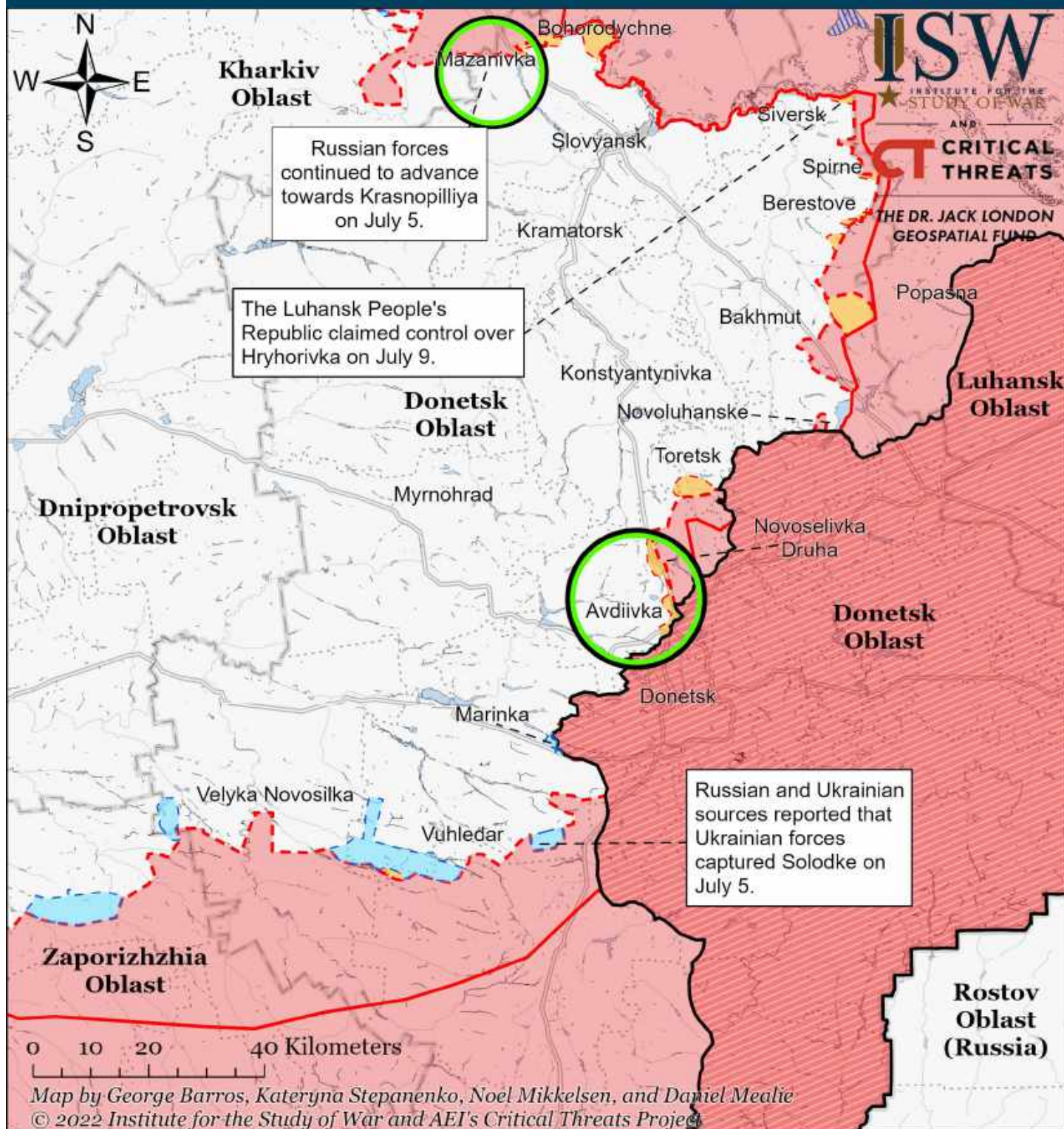


- Significant Fighting in the past 24 Hours
- Assessed Russian-controlled Ukrainian Territory
- Reported Ukrainian Partisan Warfare
- Russian-controlled Ukrainian Territory before February 24
- Claimed Russian Control over Ukrainian Territory
- - - Assessed Russian Advances in Ukraine\*
- Claimed Ukrainian Counteroffensives

\* Assessed Russian advances are areas where ISW assesses Russian forces have operated in or launched attacks against but do not control.



# Assessed Control of Terrain Around Donetsk as of July 10, 2022, 3:00 PM ET

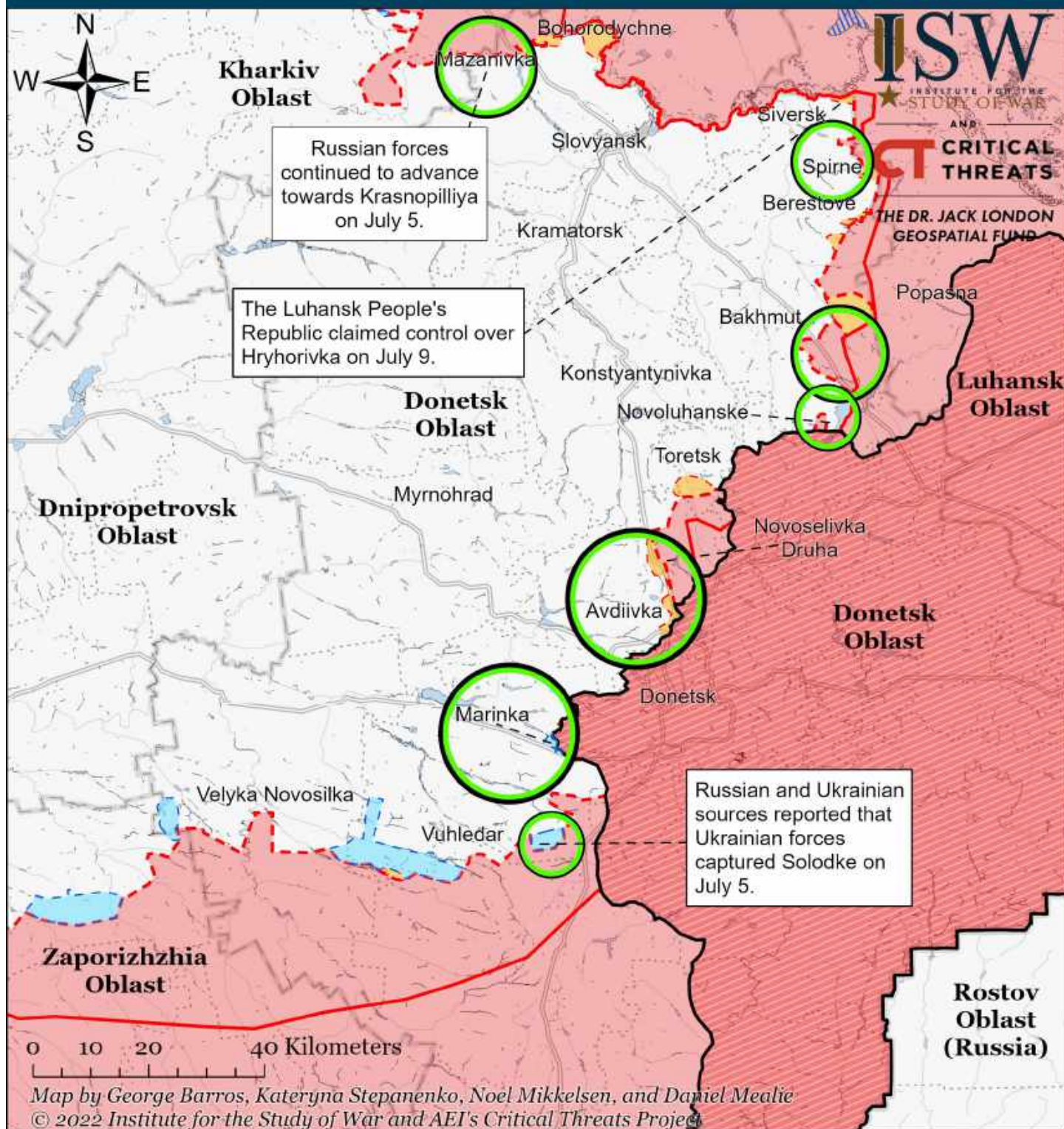


- Significant Fighting in the past 24 Hours
- Assessed Russian-controlled Ukrainian Territory
- Reported Ukrainian Partisan Warfare
- Russian-controlled Ukrainian Territory before February 24
- Claimed Russian Control over Ukrainian Territory
- Assessed Russian Advances in Ukraine\*
- Claimed Ukrainian Counteroffensives

\* Assessed Russian advances are areas where ISW assesses Russian forces have operated in or launched attacks against but do not control.



# Assessed Control of Terrain Around Donetsk as of July 9, 2022, 3:00 PM ET



- |   |  |                                     |
|---|--|-------------------------------------|
| Significant Fighting in the past 24 Hours                 | Assessed Russian-controlled Ukrainian Territory  | Reported Ukrainian Partisan Warfare |
| Russian-controlled Ukrainian Territory before February 24 | Claimed Russian Control over Ukrainian Territory |                                     |
| Assessed Russian Advances in Ukraine*                     | Claimed Ukrainian Counteroffensives              |                                     |

\* Assessed Russian advances are areas where ISW assesses Russian forces have operated in or launched attacks against but do not control.



# Assessed Control of Terrain in Ukraine and Main Russian Maneuver Axes as of July 13, 2022, 3:00 PM ET



Map by George Barros, Kateryna Stepanenko, Noel Mikkelsen, and Daniel Mealie  
© 2022 Institute for the Study of War and AEI's Critical Threats Project

\* Assessed Russian advances are areas where ISW assesses Russian forces have operated in or launched attacks against but do not control.

# Assessed Control of Terrain in Ukraine and Main Russian Maneuver Axes as of July 12, 2022, 3:00 PM ET



Map by George Barros, Kateryna Stepanenko, Noel Mikkelsen, and Daniel Mealie  
© 2022 Institute for the Study of War and AEI's Critical Threats Project

\* Assessed Russian advances are areas where ISW assesses Russian forces have operated in or launched attacks against but do not control.



# Assessed Control of Terrain in Ukraine and Main Russian Maneuver Axes as of July 11, 2022, 3:00 PM ET



Map by George Barros, Kateryna Stepanenko, Noel Mikkelsen, and Daniel Mealie  
© 2022 Institute for the Study of War and AEI's Critical Threats Project

\* Assessed Russian advances are areas where ISW assesses Russian forces have operated in or launched attacks against but do not control.



# Assessed Control of Terrain in Ukraine and Main Russian Maneuver Axes as of July 10, 2022, 3:00 PM ET



Map by George Barros, Kateryna Stepanenko, Noel Mikkelsen, and Daniel Mealie  
© 2022 Institute for the Study of War and AEI's Critical Threats Project

\* Assessed Russian advances are areas where ISW assesses Russian forces have operated in or launched attacks against but do not control.



# Assessed Control of Terrain in Ukraine and Main Russian Maneuver Axes as of July 9, 2022, 3:00 PM ET

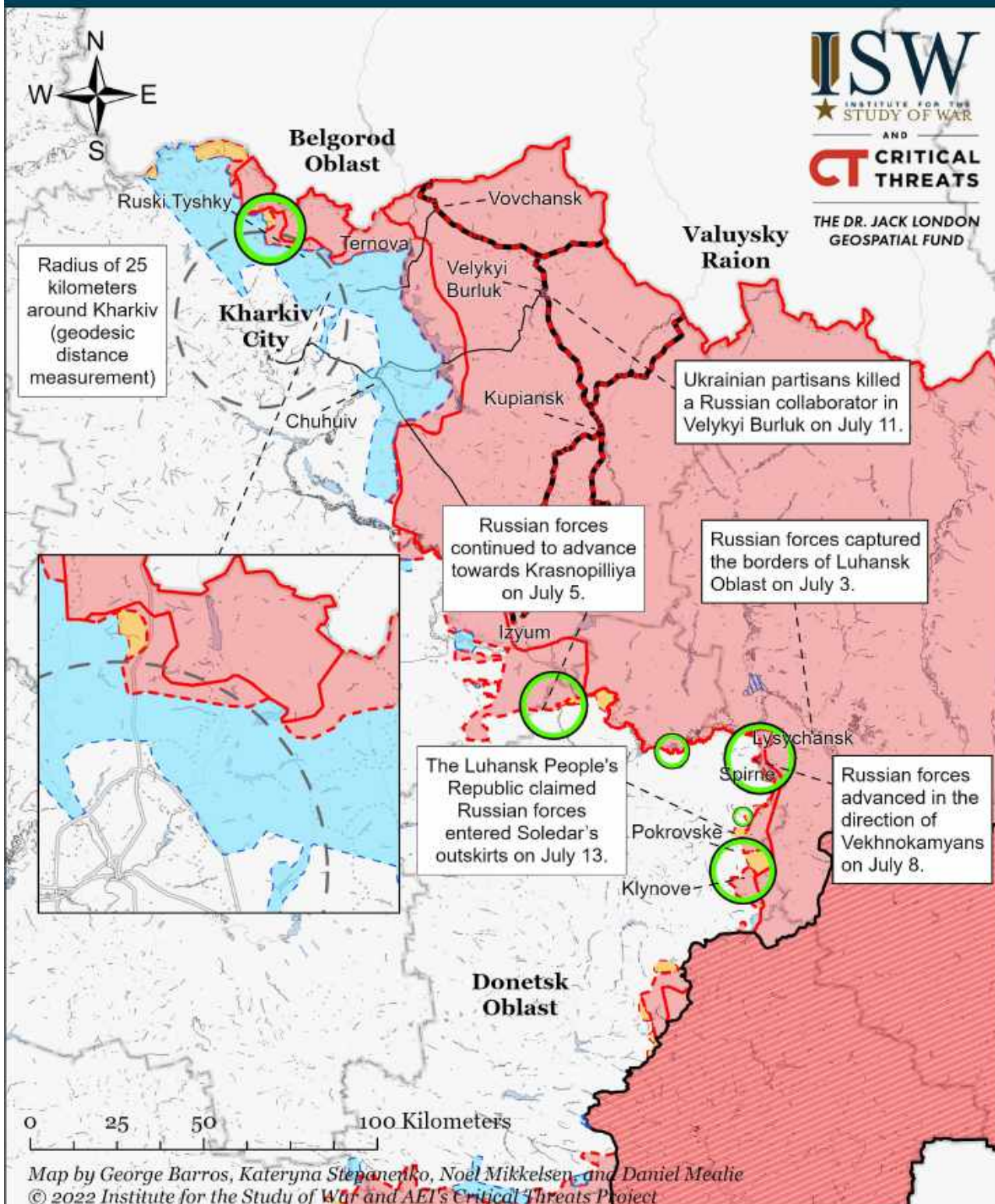


Map by George Barros, Kateryna Stepanenko, Noel Mikkelsen, and Daniel Mealie  
© 2022 Institute for the Study of War and AEI's Critical Threats Project

\* Assessed Russian advances are areas where ISW assesses Russian forces have operated in or launched attacks against but do not control.



# Assessed Control of Terrain Around Kharkiv as of July 13, 2022, 3:00 PM ET

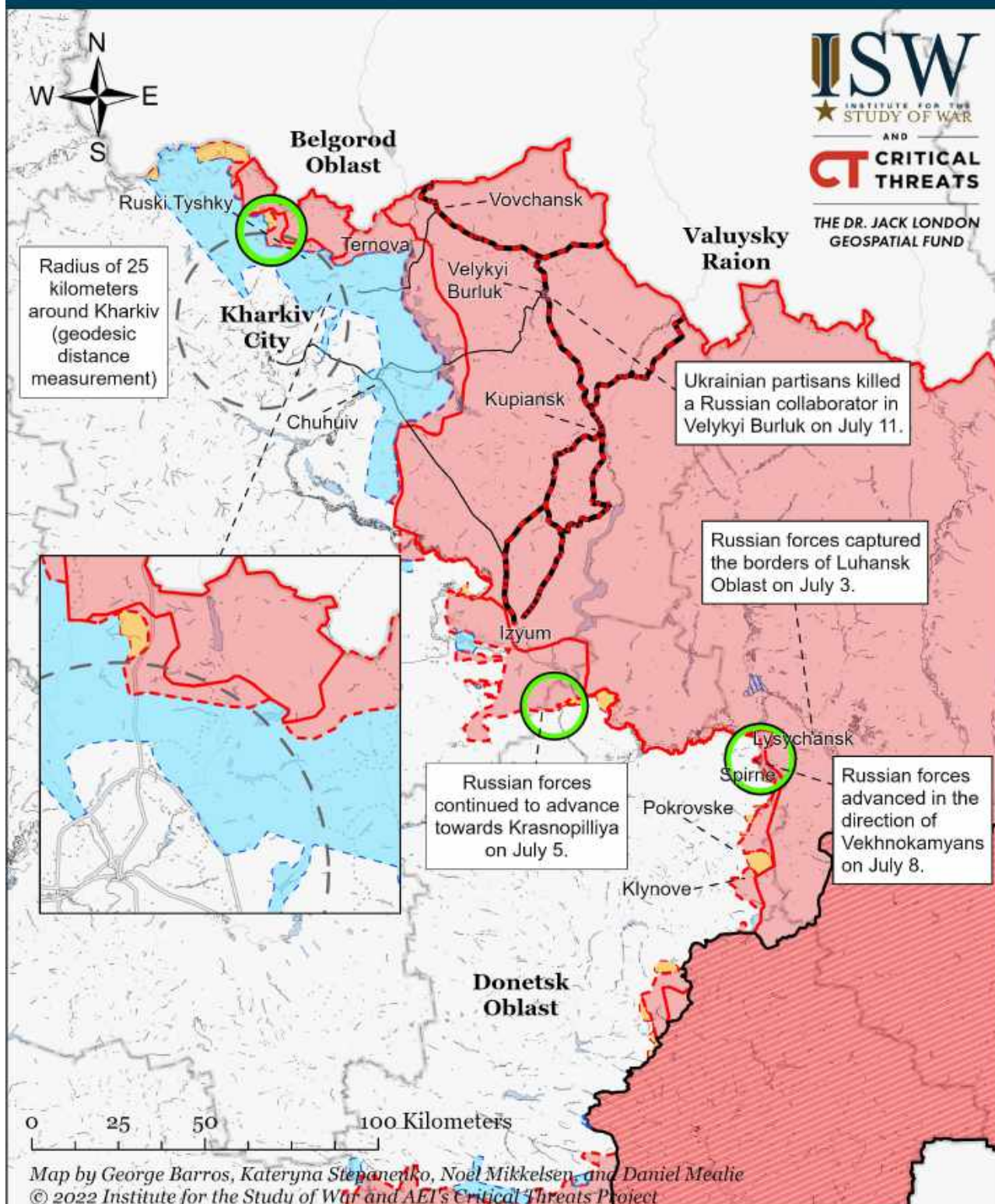


- |   |   |  |
|---|---|--|
| Significant Fighting in the past 24 Hours | Russian-controlled Ukrainian Territory before February 24 | Claimed Russian Control over Ukrainian Territory |
| Key Ukrainian Roads                       | Assessed Russian Advances in Ukraine*                     | Claimed Ukrainian Counteroffensives              |
| Russian Ground Lines of Communication     | Assessed Russian-controlled Ukrainian Territory           | Reported Ukrainian Partisan Warfare              |

\* Assessed Russian advances are areas where ISW assesses Russian forces have operated in or launched attacks against but do not control.



# Assessed Control of Terrain Around Kharkiv as of July 12, 2022, 3:00 PM ET

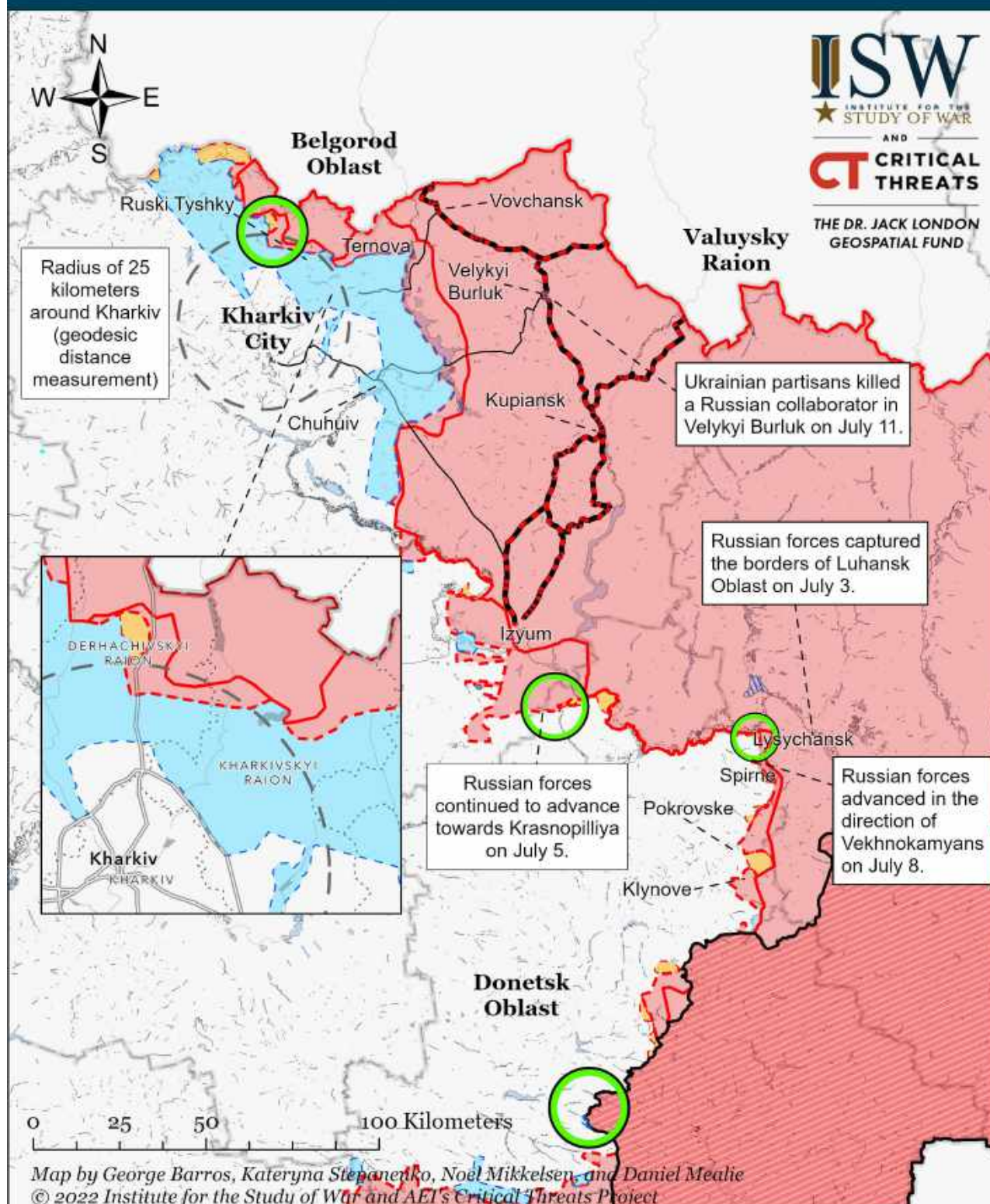


- |   |   |  |
|---|---|--|
| Significant Fighting in the past 24 Hours | Russian-controlled Ukrainian Territory before February 24 | Claimed Russian Control over Ukrainian Territory |
| Key Ukrainian Roads                       | Assessed Russian Advances in Ukraine*                     | Claimed Ukrainian Counteroffensives              |
| Russian Ground Lines of Communication     | Assessed Russian-controlled Ukrainian Territory           | Reported Ukrainian Partisan Warfare              |

\* Assessed Russian advances are areas where ISW assesses Russian forces have operated in or launched attacks against but do not control.



# Assessed Control of Terrain Around Kharkiv as of July 11, 2022, 3:00 PM ET

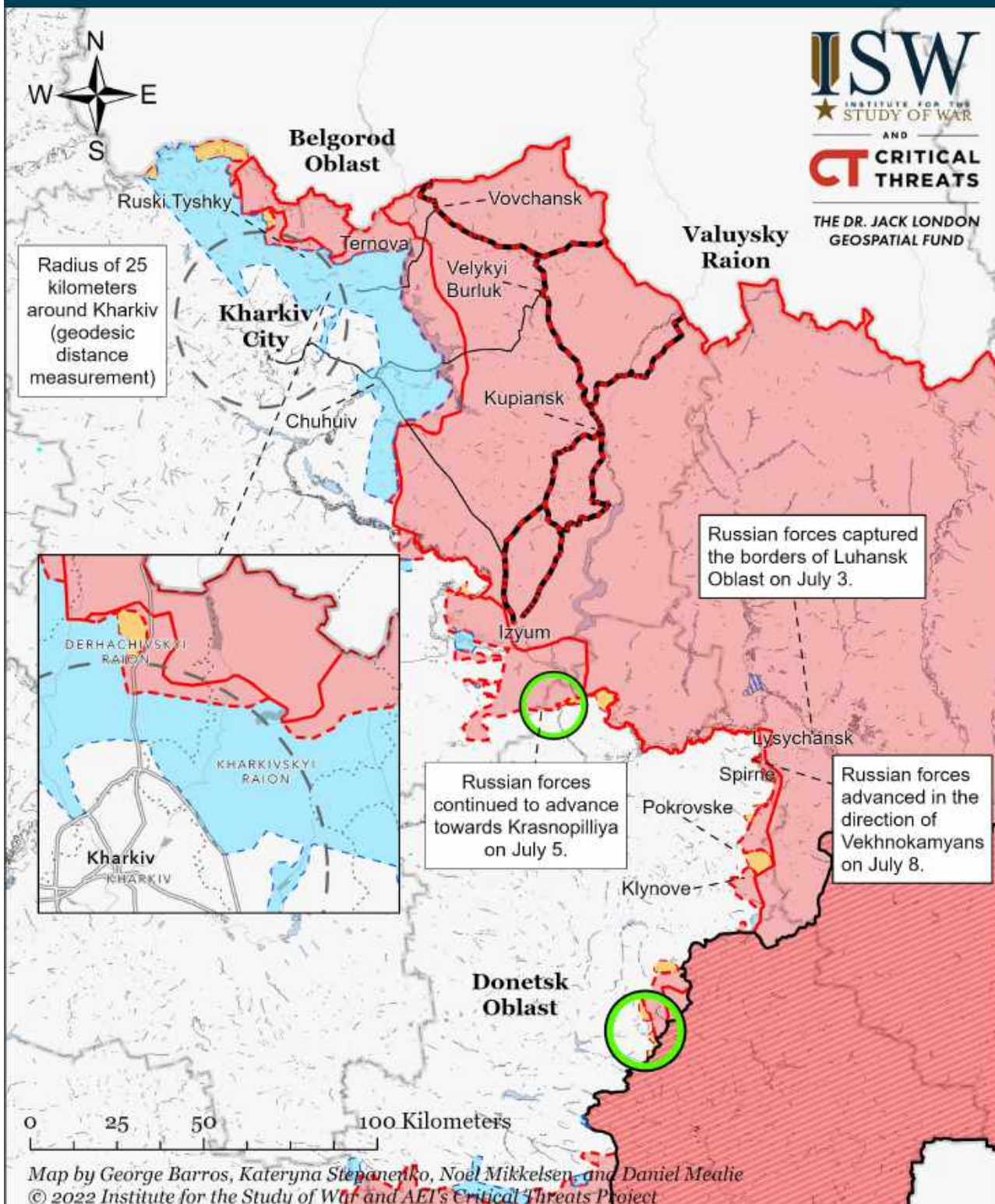


- |   |   |  |
|---|---|--|
| Significant Fighting in the past 24 Hours | Russian-controlled Ukrainian Territory before February 24 | Claimed Russian Control over Ukrainian Territory |
| Key Ukrainian Roads                       | Assessed Russian Advances in Ukraine*                     | Claimed Ukrainian Counteroffensives              |
| Russian Ground Lines of Communication     | Assessed Russian-controlled Ukrainian Territory           | Reported Ukrainian Partisan Warfare              |

\* Assessed Russian advances are areas where ISW assesses Russian forces have operated in or launched attacks against but do not control.



# Assessed Control of Terrain Around Kharkiv as of July 10, 2022, 3:00 PM ET

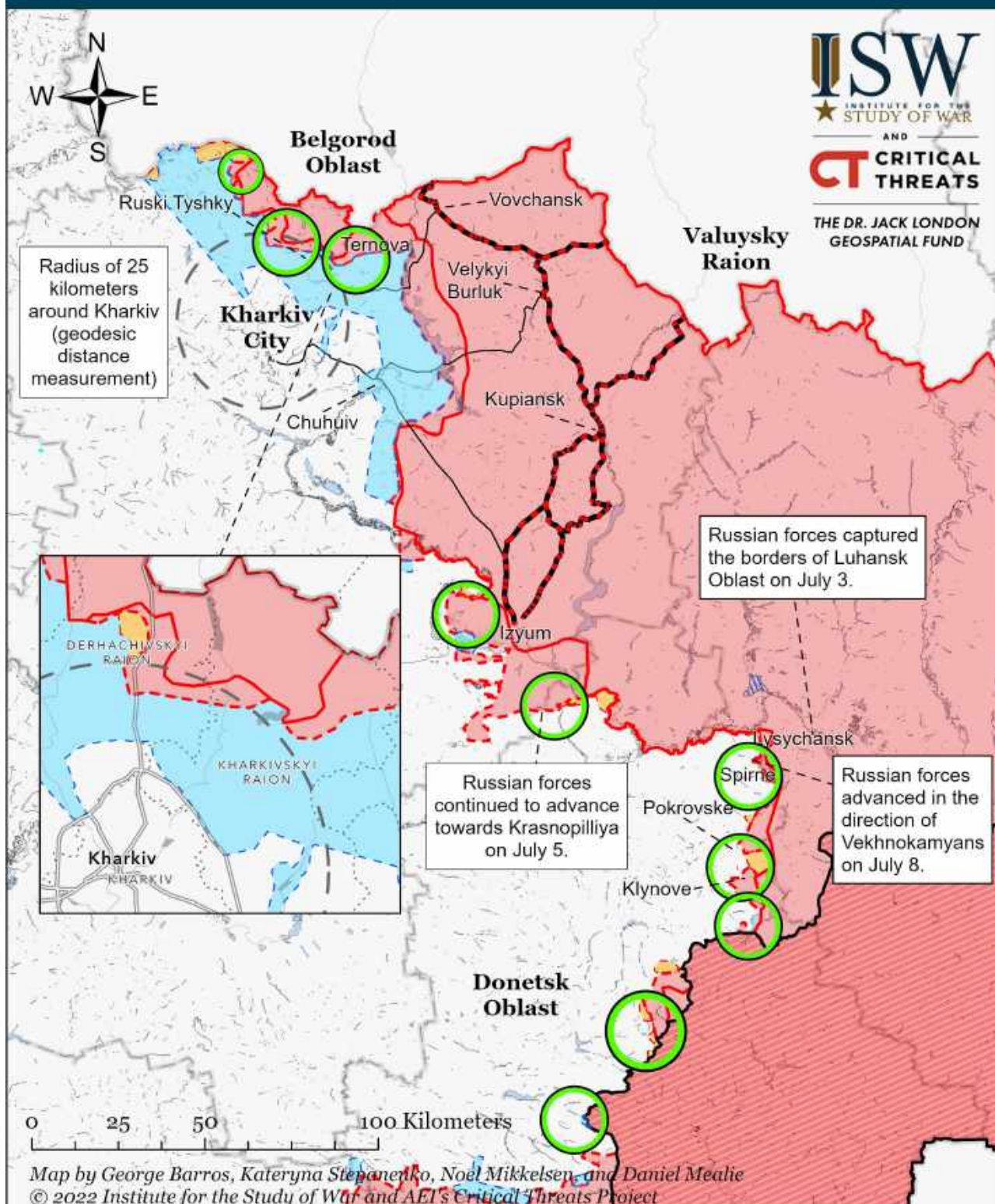


- |   |   |  |
|---|---|--|
| Significant Fighting in the past 24 Hours | Russian-controlled Ukrainian Territory before February 24 | Claimed Russian Control over Ukrainian Territory |
| Key Ukrainian Roads                       | Assessed Russian Advances in Ukraine*                     | Claimed Ukrainian Counteroffensives              |
| Russian Ground Lines of Communication     | Assessed Russian-controlled Ukrainian Territory           | Reported Ukrainian Partisan Warfare              |

\* Assessed Russian advances are areas where ISW assesses Russian forces have operated in or launched attacks against but do not control.



# Assessed Control of Terrain Around Kharkiv as of July 9, 2022, 3:00 PM ET

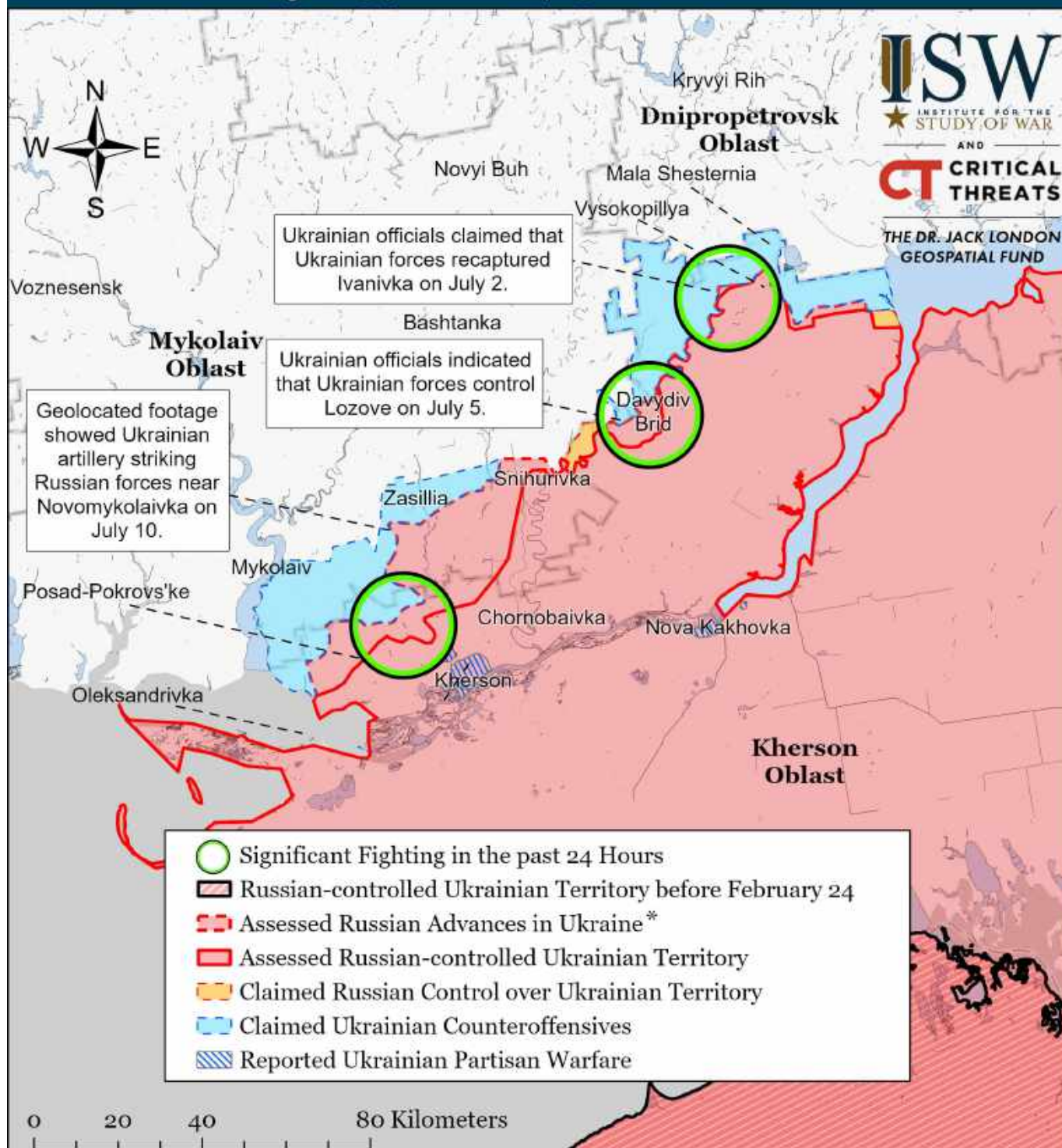


- |   |   |  |
|---|---|--|
| Significant Fighting in the past 24 Hours | Russian-controlled Ukrainian Territory before February 24 | Claimed Russian Control over Ukrainian Territory |
| Key Ukrainian Roads                       | Assessed Russian Advances in Ukraine*                     | Claimed Ukrainian Counteroffensives              |
| Russian Ground Lines of Communication     | Assessed Russian-controlled Ukrainian Territory           | Reported Ukrainian Partisan Warfare              |

\* Assessed Russian advances are areas where ISW assesses Russian forces have operated in or launched attacks against but do not control.



# Assessed Control of Terrain Around Kherson and Mykolaiv as of July 13, 2022, 3:00 PM ET



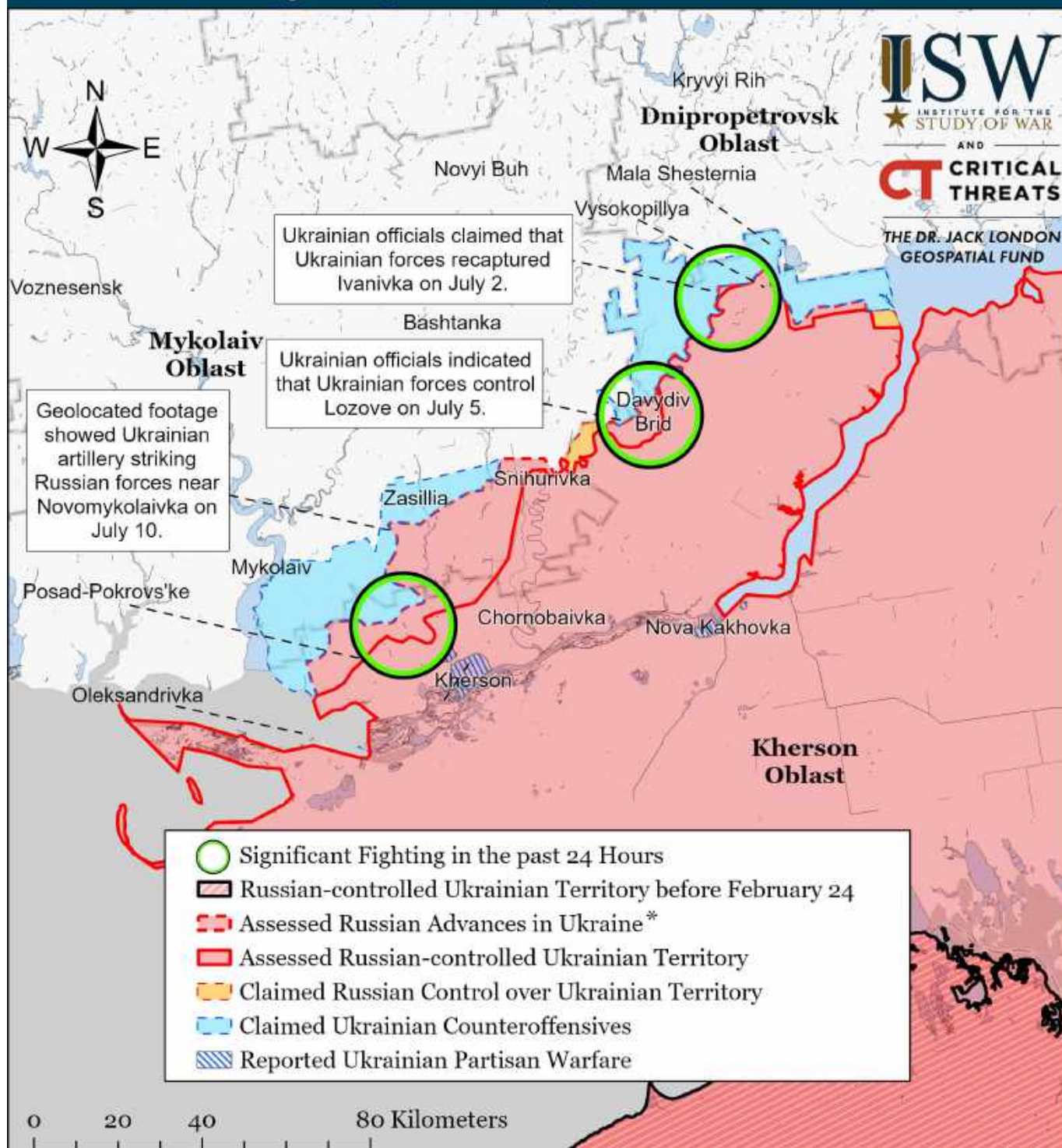
Map by George Barros, Kateryna Stepanenko, Noel Mikkelsen, and Daniel Mealie  
© 2022 Institute for the Study of War and AEI's Critical Threats Project

\* Assessed Russian advances are areas where ISW assesses Russian forces have operated in or launched attacks against but do not control.

Note: ISW expanded Ukrainian counteroffensives to Lozove on the left bank of the Inhulets River on July 5. The Ukrainian General Staff reported on July 6 that Ukrainian forces repelled a Russian offensive in the direction of Lozove in Kherson Oblast, indicating that Ukrainian forces still maintain a position there. Russian Telegram Channel Rybar claimed that Ukrainian forces launched unsuccessful attacks on the Snihurivka-Lozove-Bila Krynytsya line on July 4. Ukraine's Southern Operational Command stated on July 5 that Ukrainian forces repelled a Russian platoon counterattack in the Lozove area, indicating that Ukrainian forces are in Lozove. Ukrainian combat footage posted in mid-June showed Ukrainian forces shelling Russian positions near Lozove. NASA FIRMS data for July 5 shows heat anomaly concentrations south of Lozove consistent with the Ukraine's Southern Operational Command report. We will update our maps as we collect and confirm more information.



# Assessed Control of Terrain Around Kherson and Mykolaiv as of July 12, 2022, 3:00 PM ET



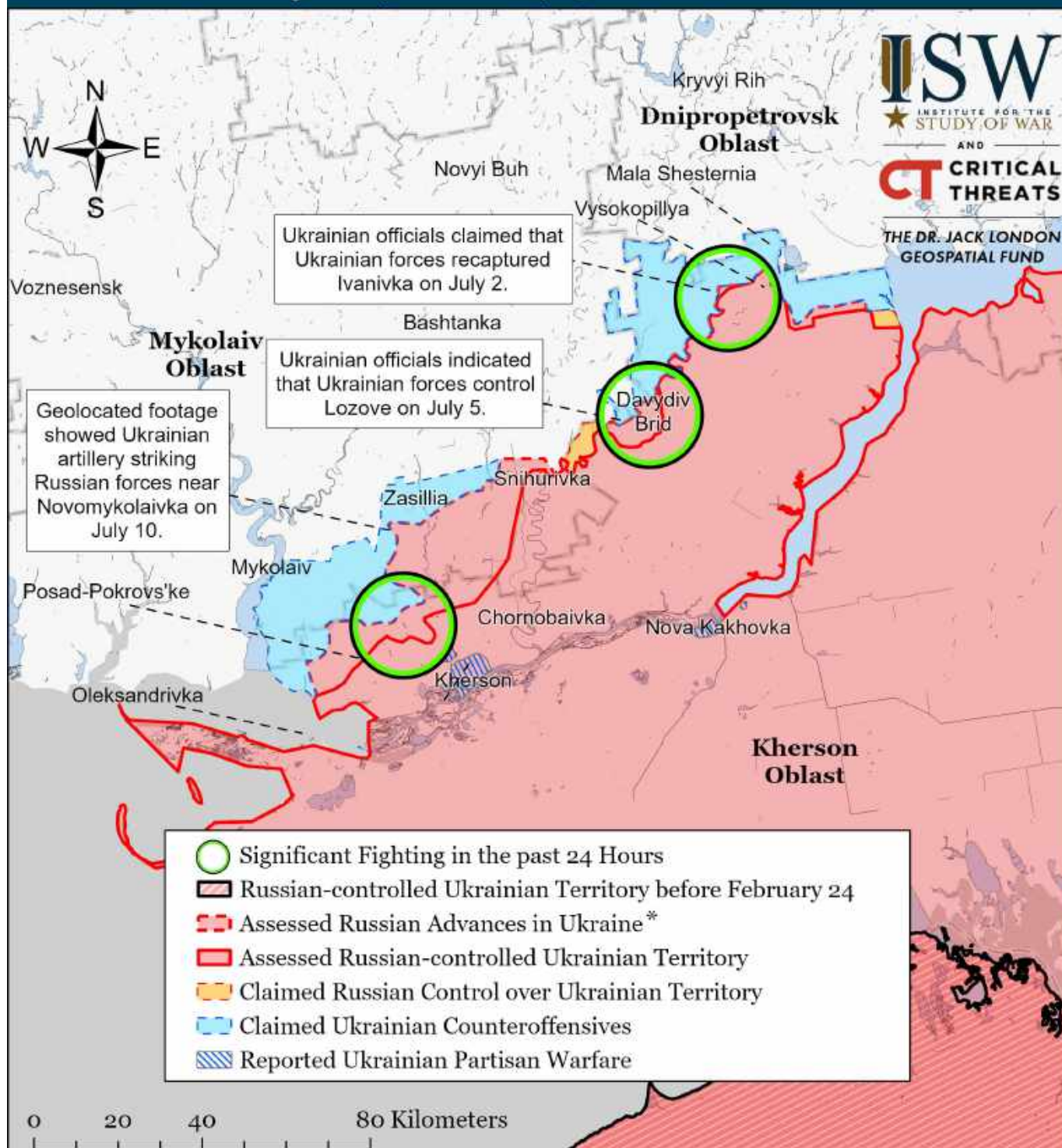
Map by George Barros, Kateryna Stepanenko, Noel Mikkelsen, and Daniel Mealie  
© 2022 Institute for the Study of War and AEI's Critical Threats Project

\* Assessed Russian advances are areas where ISW assesses Russian forces have operated in or launched attacks against but do not control.

Note: ISW expanded Ukrainian counteroffensives to Lozove on the left bank of the Inhulets River on July 5. The Ukrainian General Staff reported on July 6 that Ukrainian forces repelled a Russian offensive in the direction of Lozove in Kherson Oblast, indicating that Ukrainian forces still maintain a position there. Russian Telegram Channel Rybar claimed that Ukrainian forces launched unsuccessful attacks on the Snihurivka-Lozove-Bila Krynytsya line on July 4. Ukraine's Southern Operational Command stated on July 5 that Ukrainian forces repelled a Russian platoon counterattack in the Lozove area, indicating that Ukrainian forces are in Lozove. Ukrainian combat footage posted in mid-June showed Ukrainian forces shelling Russian positions near Lozove. NASA FIRMS data for July 5 shows heat anomaly concentrations south of Lozove consistent with the Ukraine's Southern Operational Command report. We will update our maps as we collect and confirm more information.



# Assessed Control of Terrain Around Kherson and Mykolaiv as of July 11, 2022, 3:00 PM ET



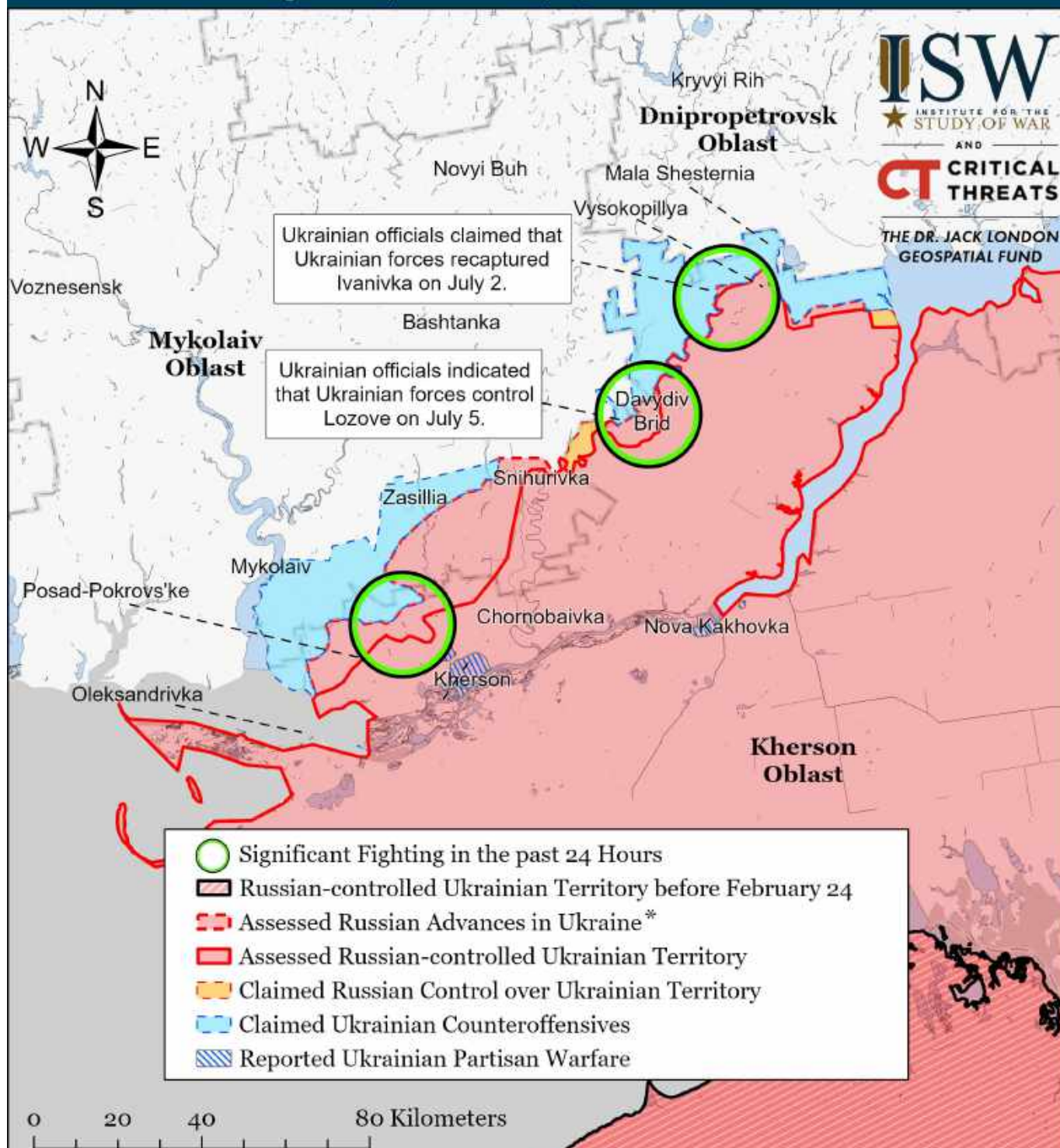
Map by George Barros, Kateryna Stepanenko, Noel Mikkelsen, and Daniel Mealie  
© 2022 Institute for the Study of War and AEI's Critical Threats Project

\* Assessed Russian advances are areas where ISW assesses Russian forces have operated in or launched attacks against but do not control.

Note: ISW expanded Ukrainian counteroffensives to Lozove on the left bank of the Inhulets River on July 5. The Ukrainian General Staff reported on July 6 that Ukrainian forces repelled a Russian offensive in the direction of Lozove in Kherson Oblast, indicating that Ukrainian forces still maintain a position there. Russian Telegram Channel Rybar claimed that Ukrainian forces launched unsuccessful attacks on the Snihurivka-Lozove-Bila Krynytsya line on July 4. Ukraine's Southern Operational Command stated on July 5 that Ukrainian forces repelled a Russian platoon counterattack in the Lozove area, indicating that Ukrainian forces are in Lozove. Ukrainian combat footage posted in mid-June showed Ukrainian forces shelling Russian positions near Lozove. NASA FIRMS data for July 5 shows heat anomaly concentrations south of Lozove consistent with the Ukraine's Southern Operational Command report. We will update our maps as we collect and confirm more information.



# Assessed Control of Terrain Around Kherson and Mykolaiv as of July 10, 2022, 3:00 PM ET



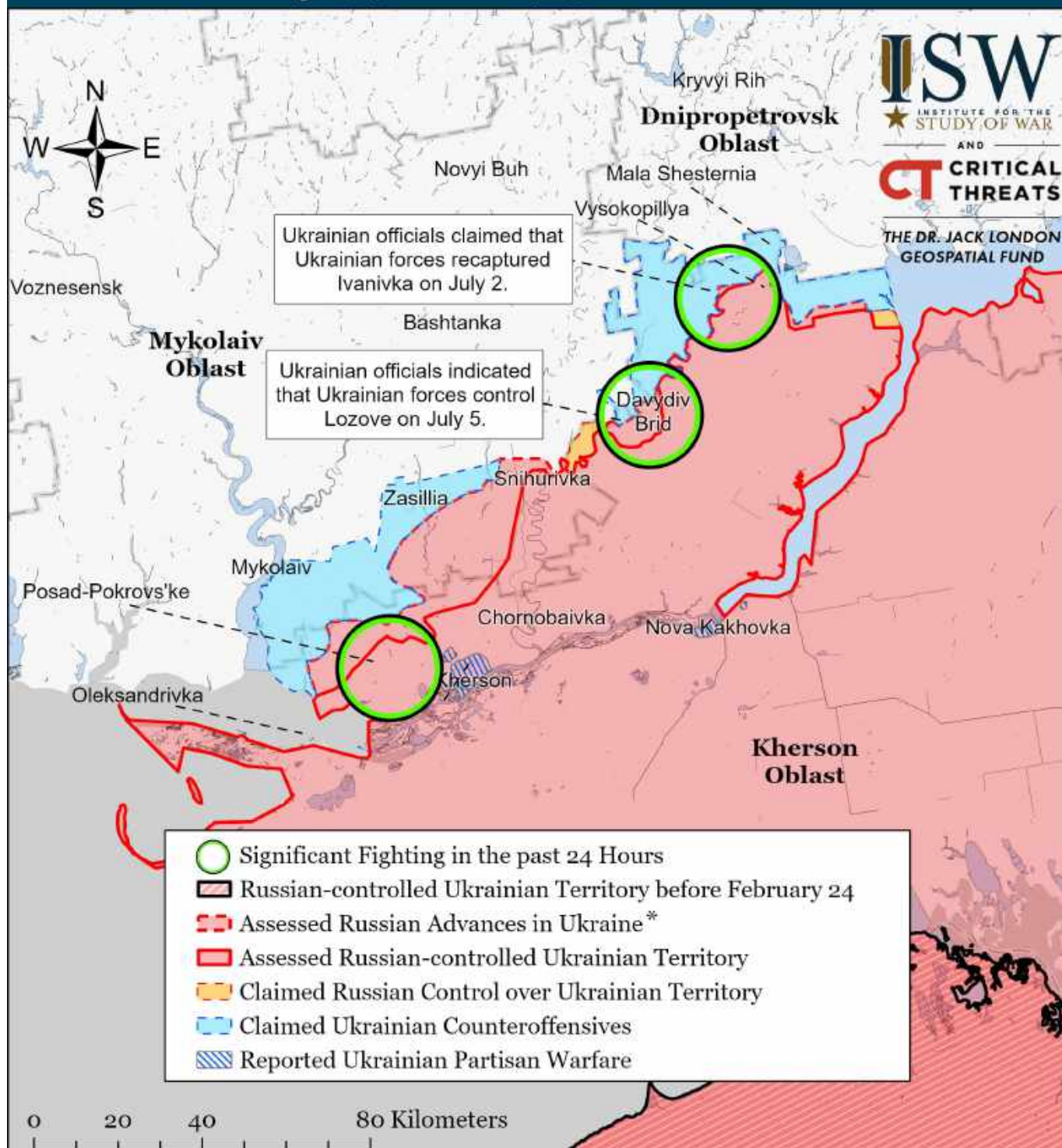
Map by George Barros, Kateryna Stepanenko, Noel Mikkelsen, and Daniel Mealie  
© 2022 Institute for the Study of War and AEI's Critical Threats Project

\* Assessed Russian advances are areas where ISW assesses Russian forces have operated in or launched attacks against but do not control.

Note: ISW expanded Ukrainian counteroffensives to Lozove on the left bank of the Inhulets River on July 5. The Ukrainian General Staff reported on July 6 that Ukrainian forces repelled a Russian offensive in the direction of Lozove in Kherson Oblast, indicating that Ukrainian forces still maintain a position there. Russian Telegram Channel Rybar claimed that Ukrainian forces launched unsuccessful attacks on the Snihurivka-Lozove-Bila Krynytsya line on July 4. Ukraine's Southern Operational Command stated on July 5 that Ukrainian forces repelled a Russian platoon counterattack in the Lozove area, indicating that Ukrainian forces are in Lozove. Ukrainian combat footage posted in mid-June showed Ukrainian forces shelling Russian positions near Lozove. NASA FIRMS data for July 5 shows heat anomaly concentrations south of Lozove consistent with the Ukraine's Southern Operational Command report. We will update our maps as we collect and confirm more information.



# Assessed Control of Terrain Around Kherson and Mykolaiv as of July 9, 2022, 3:00 PM ET



Map by George Barros, Kateryna Stepanenko, Noel Mikkelsen, and Daniel Mealie  
© 2022 Institute for the Study of War and AEI's Critical Threats Project

\* Assessed Russian advances are areas where ISW assesses Russian forces have operated in or launched attacks against but do not control.

Note: ISW expanded Ukrainian counteroffensives to Lozove on the left bank of the Inhulets River on July 5. The Ukrainian General Staff reported on July 6 that Ukrainian forces repelled a Russian offensive in the direction of Lozove in Kherson Oblast, indicating that Ukrainian forces still maintain a position there. Russian Telegram Channel Rybar claimed that Ukrainian forces launched unsuccessful attacks on the Snihurivka-Lozove-Bila Krynytsya line on July 4. Ukraine's Southern Operational Command stated on July 5 that Ukrainian forces repelled a Russian platoon counterattack in the Lozove area, indicating that Ukrainian forces are in Lozove. Ukrainian combat footage posted in mid-June showed Ukrainian forces shelling Russian positions near Lozove. NASA FIRMS data for July 5 shows heat anomaly concentrations south of Lozove consistent with the Ukraine's Southern Operational Command report. We will update our maps as we collect and confirm more information.