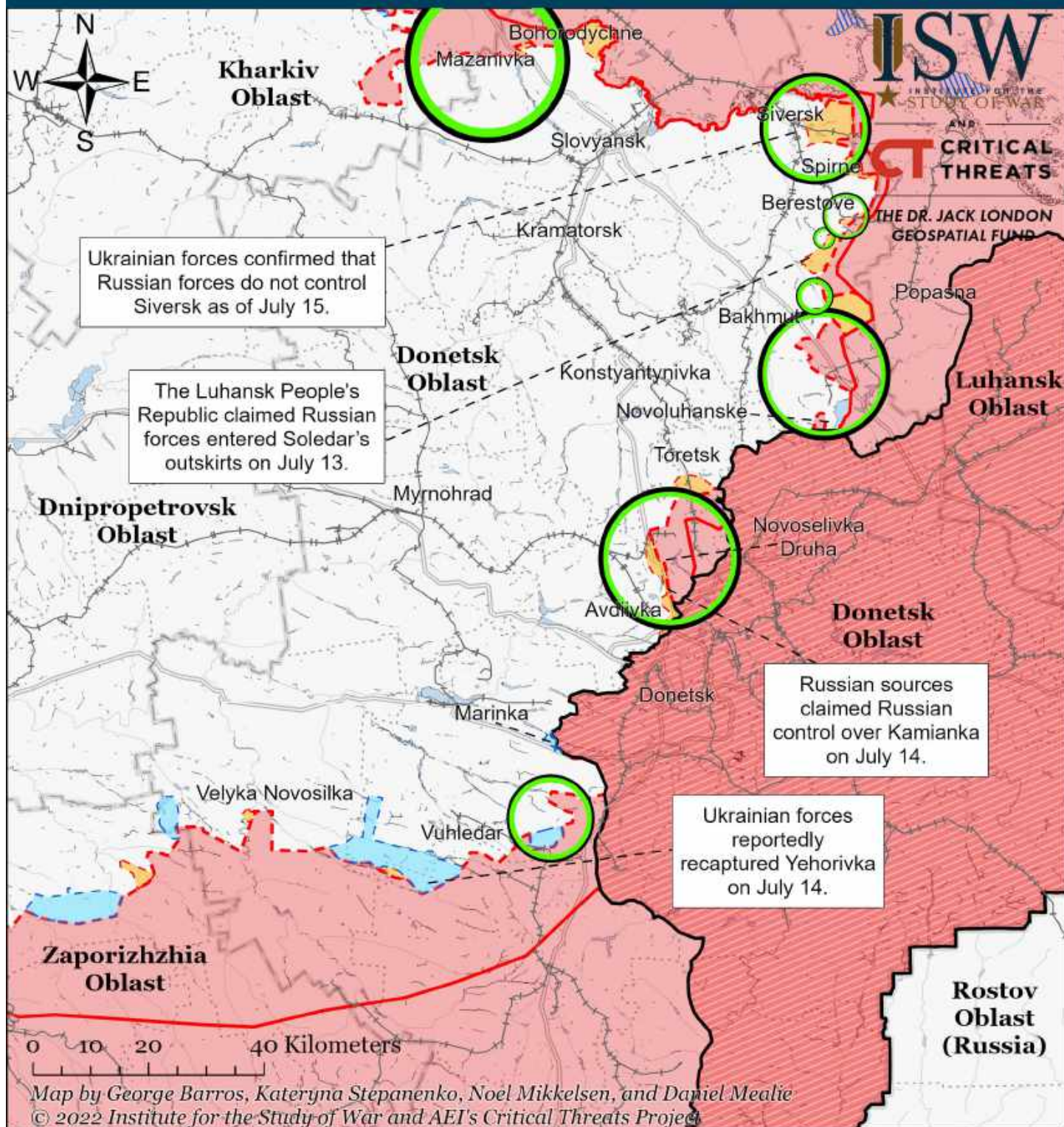


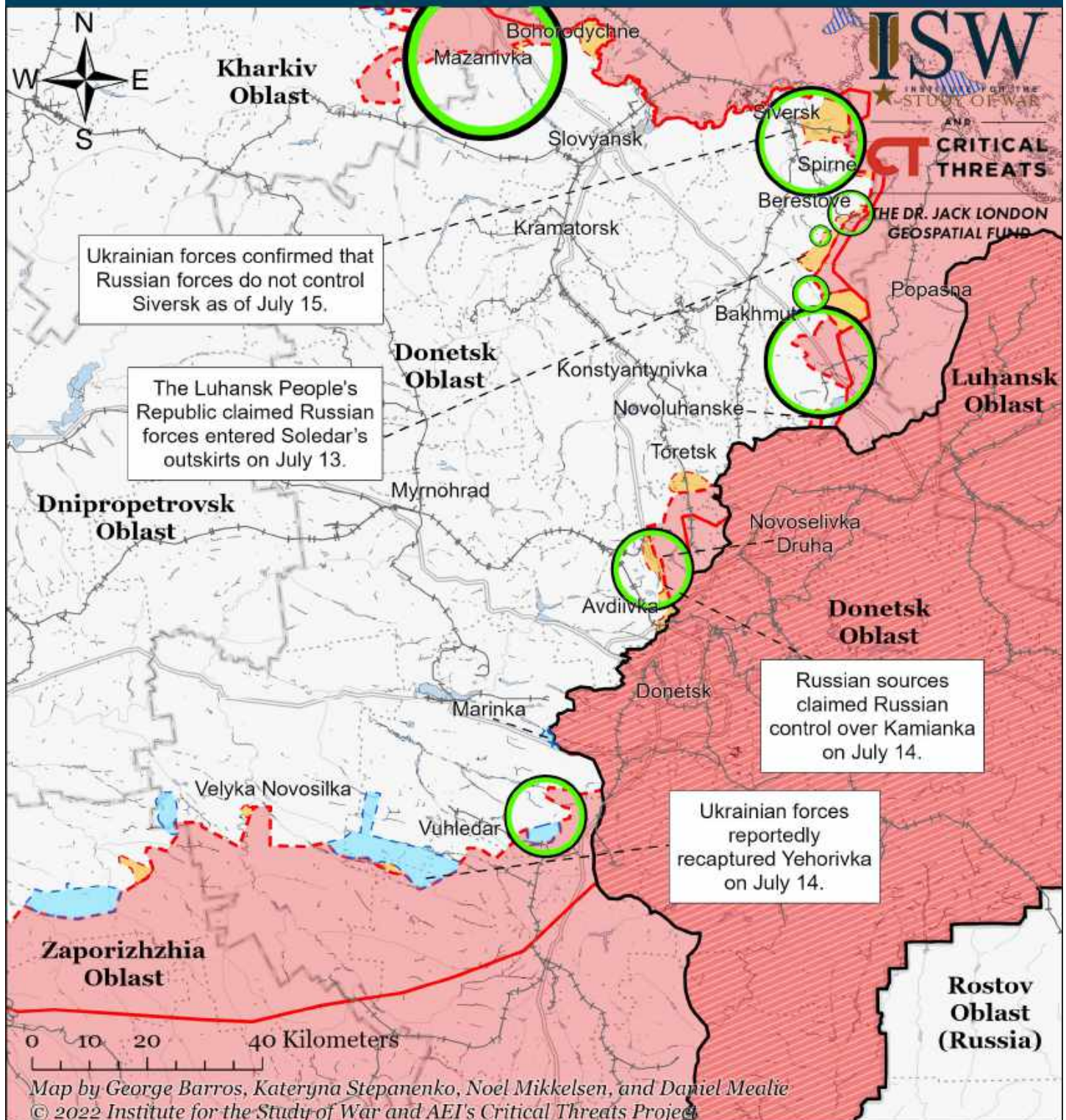
Assessed Control of Terrain Around Donetsk as of July 18, 2022, 3:00 PM ET



- Significant Fighting in the past 24 Hours
- Assessed Russian-controlled Ukrainian Territory
- Russian-controlled Ukrainian Territory before February 24
- Assessed Russian Advances in Ukraine*
- Claimed Russian Control over Ukrainian Territory
- Claimed Ukrainian Counteroffensives
- Reported Ukrainian Partisan Warfare
- Major Railroads

* Assessed Russian advances are areas where ISW assesses Russian forces have operated in or launched attacks against but do not control.

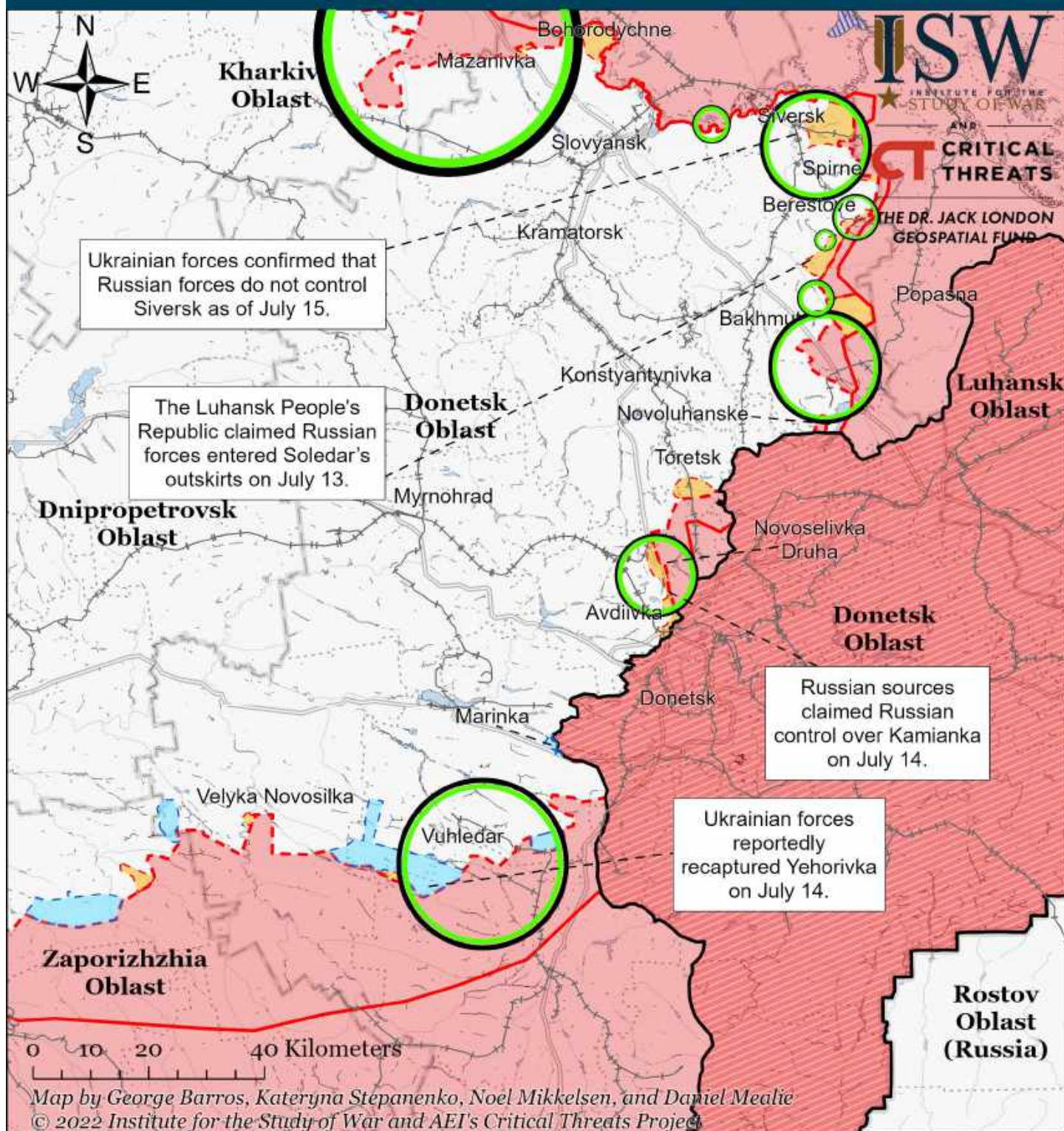
Assessed Control of Terrain Around Donetsk as of July 17, 2022, 3:00 PM ET



- Significant Fighting in the past 24 Hours
- Assessed Russian-controlled Ukrainian Territory
- Reported Ukrainian Partisan Warfare
- Russian-controlled Ukrainian Territory before February 24
- Claimed Russian Control over Ukrainian Territory
- Major Railroads
- Assessed Russian Advances in Ukraine*
- Claimed Ukrainian Counteroffensives

* Assessed Russian advances are areas where ISW assesses Russian forces have operated in or launched attacks against but do not control.

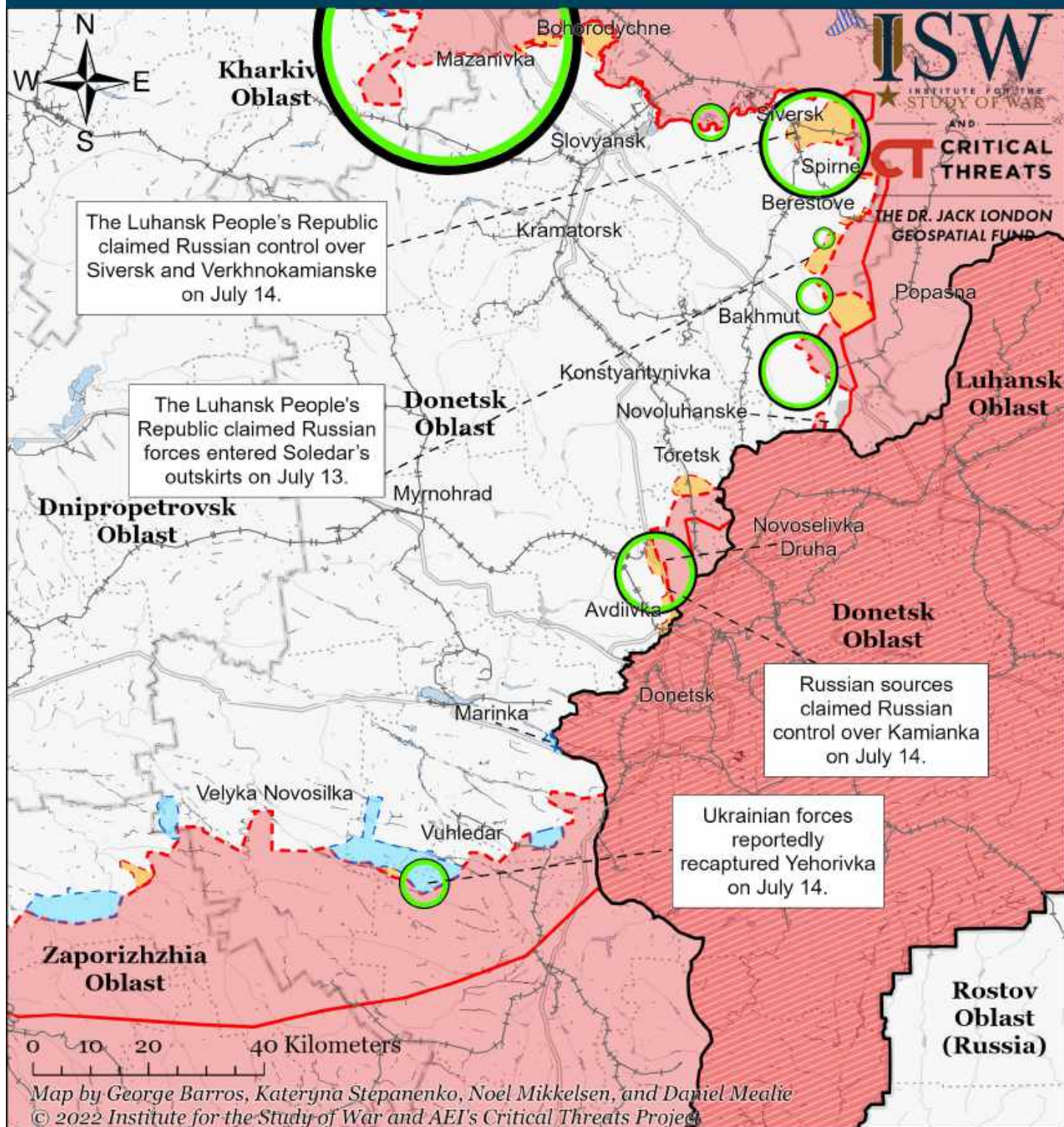
Assessed Control of Terrain Around Donetsk as of July 15, 2022, 3:00 PM ET



- | | | |
|---|--|-------------------------------------|
| Significant Fighting in the past 24 Hours | Assessed Russian-controlled Ukrainian Territory | Reported Ukrainian Partisan Warfare |
| Russian-controlled Ukrainian Territory before February 24 | Claimed Russian Control over Ukrainian Territory | Major Railroads |
| Assessed Russian Advances in Ukraine* | Claimed Ukrainian Counteroffensives | |

* Assessed Russian advances are areas where ISW assesses Russian forces have operated in or launched attacks against but do not control.

Assessed Control of Terrain Around Donetsk as of July 14, 2022, 3:00 PM ET



- Significant Fighting in the past 24 Hours
- Assessed Russian-controlled Ukrainian Territory
- Reported Ukrainian Partisan Warfare
- Russian-controlled Ukrainian Territory before February 24
- Claimed Russian Control over Ukrainian Territory
- Assessed Russian Advances in Ukraine*
- Claimed Ukrainian Counteroffensives
- Major Railroads

* Assessed Russian advances are areas where ISW assesses Russian forces have operated in or launched attacks against but do not control.

Assessed Control of Terrain in Ukraine and Main Russian Maneuver Axes as of July 18, 2022, 3:00 PM ET



Map by George Barros, Kateryna Stepanenko, Noel Mikkelsen, and Daniel Mealie
© 2022 Institute for the Study of War and AEI's Critical Threats Project

* Assessed Russian advances are areas where ISW assesses Russian forces have operated in or launched attacks against but do not control.

Assessed Control of Terrain in Ukraine and Main Russian Maneuver Axes as of July 17, 2022, 3:00 PM ET



Map by George Barros, Kateryna Stepanenko, Noel Mikkelsen, and Daniel Mealie
© 2022 Institute for the Study of War and AEI's Critical Threats Project

* Assessed Russian advances are areas where ISW assesses Russian forces have operated in or launched attacks against but do not control.

Assessed Control of Terrain in Ukraine and Main Russian Maneuver Axes as of July 15, 2022, 3:00 PM ET



Map by George Barros, Kateryna Stepanenko, Noel Mikkelsen, and Daniel Mealie
© 2022 Institute for the Study of War and AEI's Critical Threats Project

* Assessed Russian advances are areas where ISW assesses Russian forces have operated in or launched attacks against but do not control.

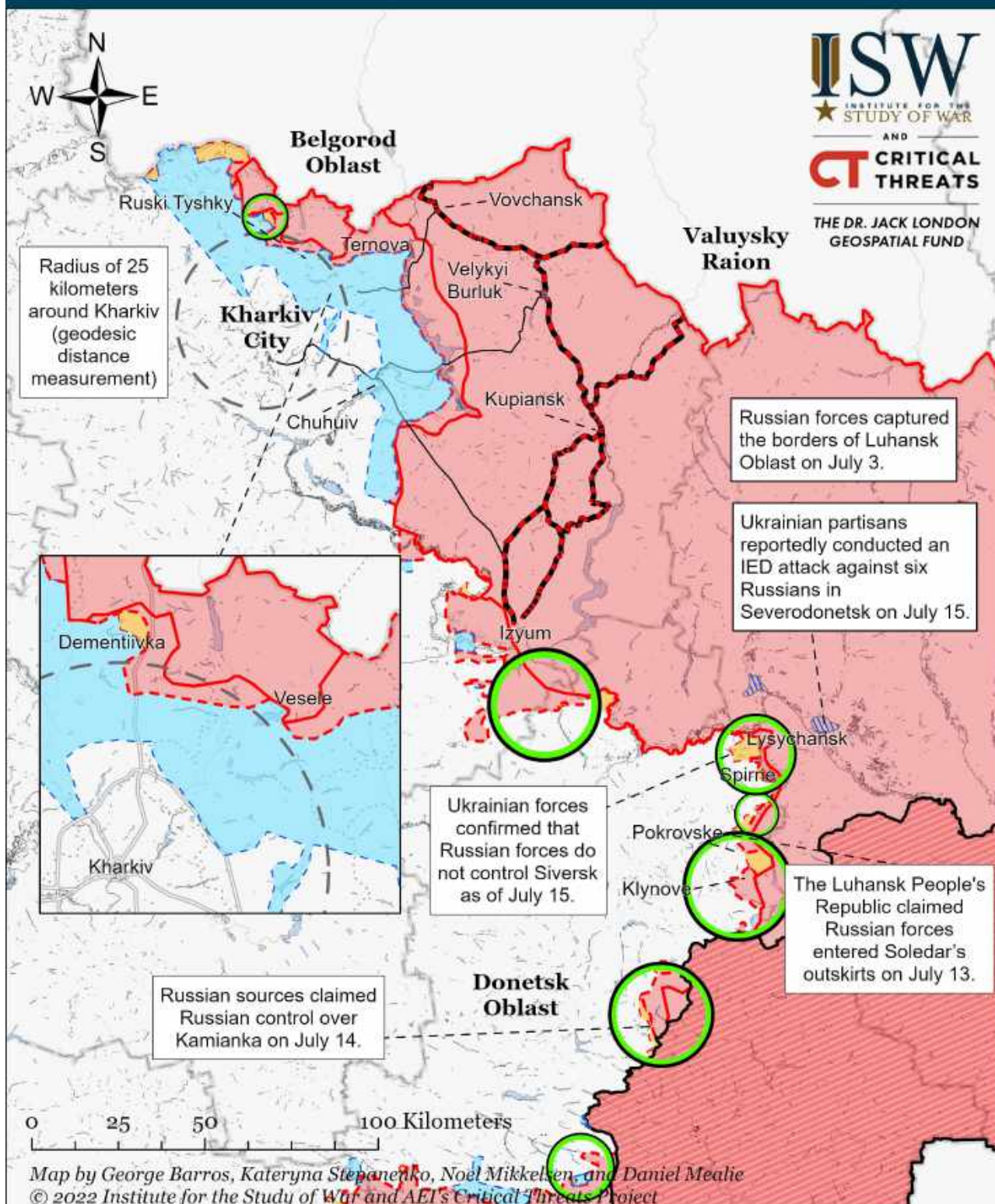
Assessed Control of Terrain in Ukraine and Main Russian Maneuver Axes as of July 14, 2022, 3:00 PM ET



Map by George Barros, Kateryna Stepanenko, Noel Mikkelsen, and Daniel Mealie
© 2022 Institute for the Study of War and AEI's Critical Threats Project

* Assessed Russian advances are areas where ISW assesses Russian forces have operated in or launched attacks against but do not control.

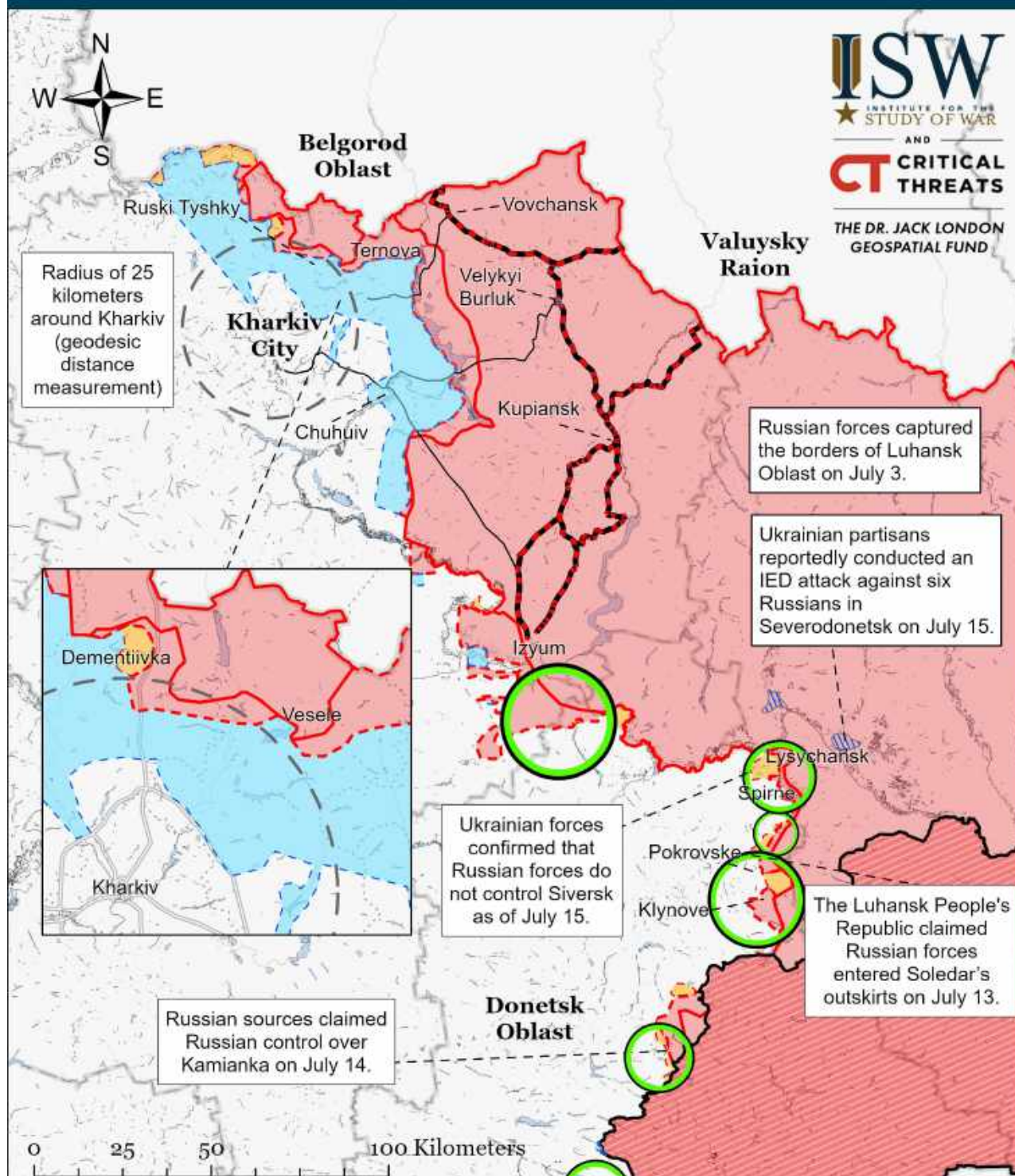
Assessed Control of Terrain Around Kharkiv as of July 18, 2022, 3:00 PM ET



- | | | |
|---|---|--|
| Significant Fighting in the past 24 Hours | Russian-controlled Ukrainian Territory before February 24 | Claimed Russian Control over Ukrainian Territory |
| Key Ukrainian Roads | Assessed Russian Advances in Ukraine* | Claimed Ukrainian Counteroffensives |
| Russian Ground Lines of Communication | Assessed Russian-controlled Ukrainian Territory | Reported Ukrainian Partisan Warfare |

* Assessed Russian advances are areas where ISW assesses Russian forces have operated in or launched attacks against but do not control.

Assessed Control of Terrain Around Kharkiv as of July 17, 2022, 3:00 PM ET

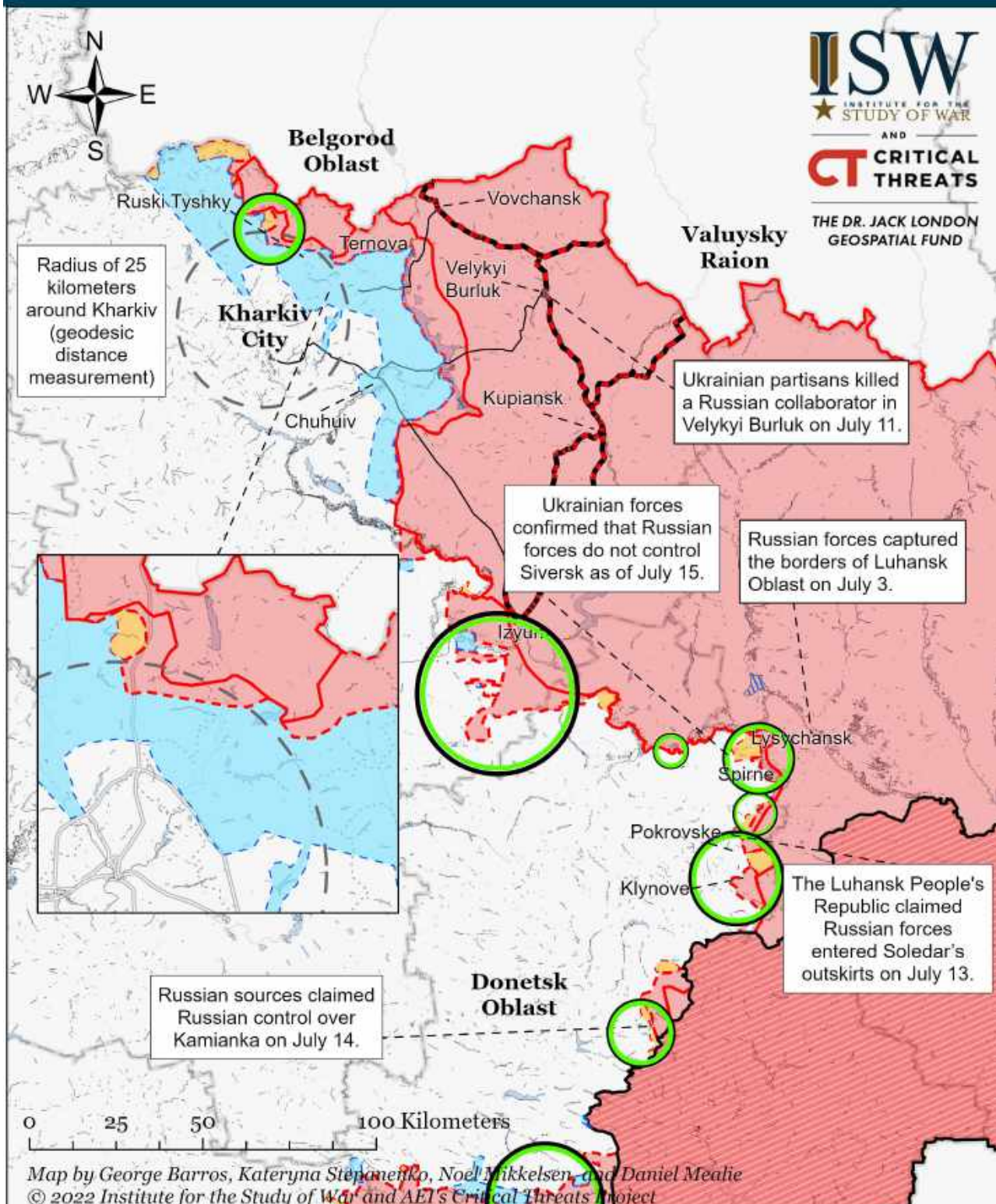


Map by George Barros, Kateryna Stepanenko, Noel Mikkelsen, and Daniel Mealie
© 2022 Institute for the Study of War and AEI's Critical Threats Project

- | | | |
|---|---|--|
| Significant Fighting in the past 24 Hours | Russian-controlled Ukrainian Territory before February 24 | Claimed Russian Control over Ukrainian Territory |
| Key Ukrainian Roads | Assessed Russian Advances in Ukraine* | Claimed Ukrainian Counteroffensives |
| Russian Ground Lines of Communication | Assessed Russian-controlled Ukrainian Territory | Reported Ukrainian Partisan Warfare |

* Assessed Russian advances are areas where ISW assesses Russian forces have operated in or launched attacks against but do not control.

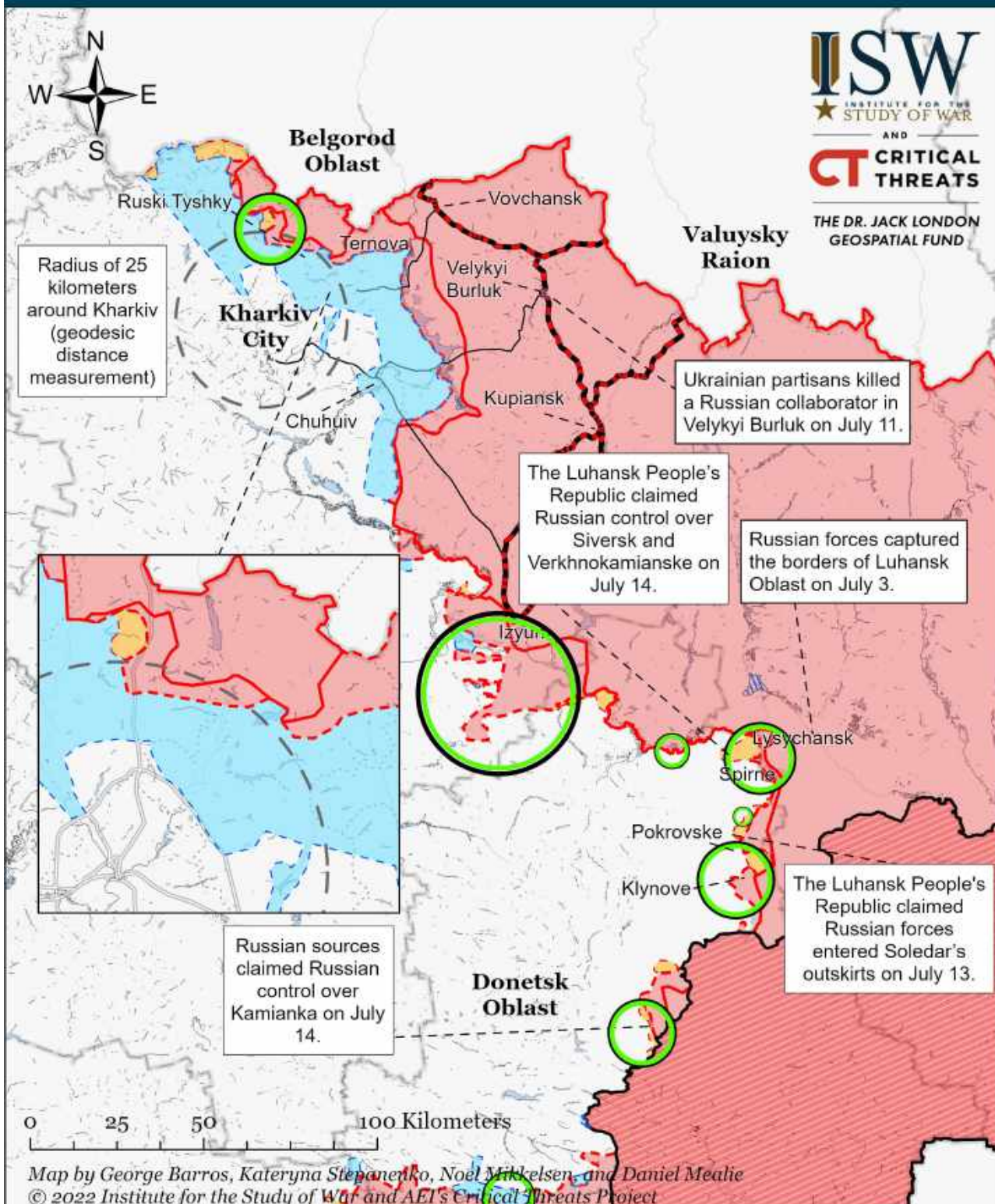
Assessed Control of Terrain Around Kharkiv as of July 15, 2022, 3:00 PM ET



- | | | |
|---|---|--|
| Significant Fighting in the past 24 Hours | Russian-controlled Ukrainian Territory before February 24 | Claimed Russian Control over Ukrainian Territory |
| Key Ukrainian Roads | Assessed Russian Advances in Ukraine* | Claimed Ukrainian Counteroffensives |
| Russian Ground Lines of Communication | Assessed Russian-controlled Ukrainian Territory | Reported Ukrainian Partisan Warfare |

* Assessed Russian advances are areas where ISW assesses Russian forces have operated in or launched attacks against but do not control.

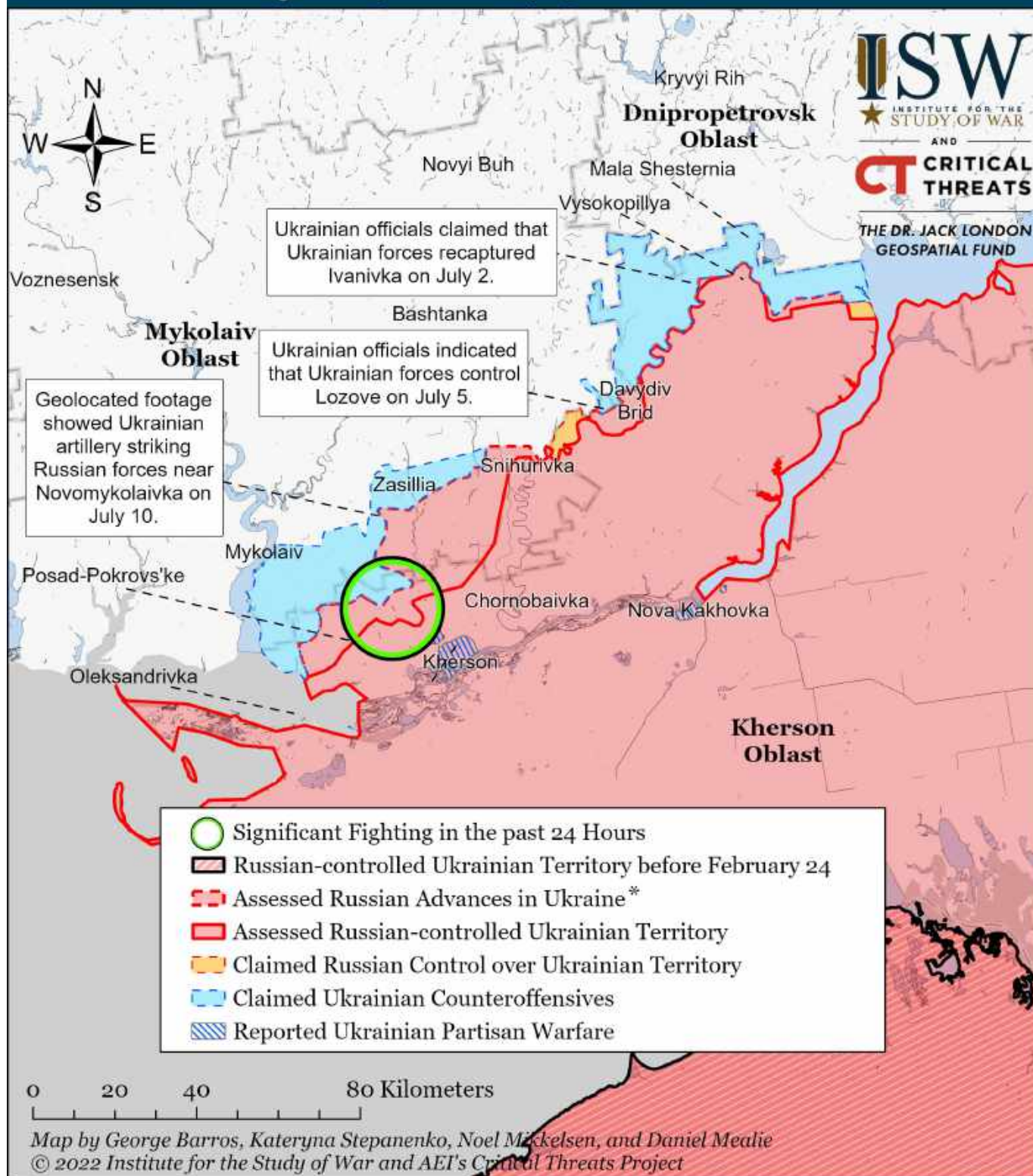
Assessed Control of Terrain Around Kharkiv as of July 14, 2022, 3:00 PM ET



- | | | |
|---|---|--|
| Significant Fighting in the past 24 Hours | Russian-controlled Ukrainian Territory before February 24 | Claimed Russian Control over Ukrainian Territory |
| Key Ukrainian Roads | Assessed Russian Advances in Ukraine* | Claimed Ukrainian Counteroffensives |
| Russian Ground Lines of Communication | Assessed Russian-controlled Ukrainian Territory | Reported Ukrainian Partisan Warfare |

* Assessed Russian advances are areas where ISW assesses Russian forces have operated in or launched attacks against but do not control.

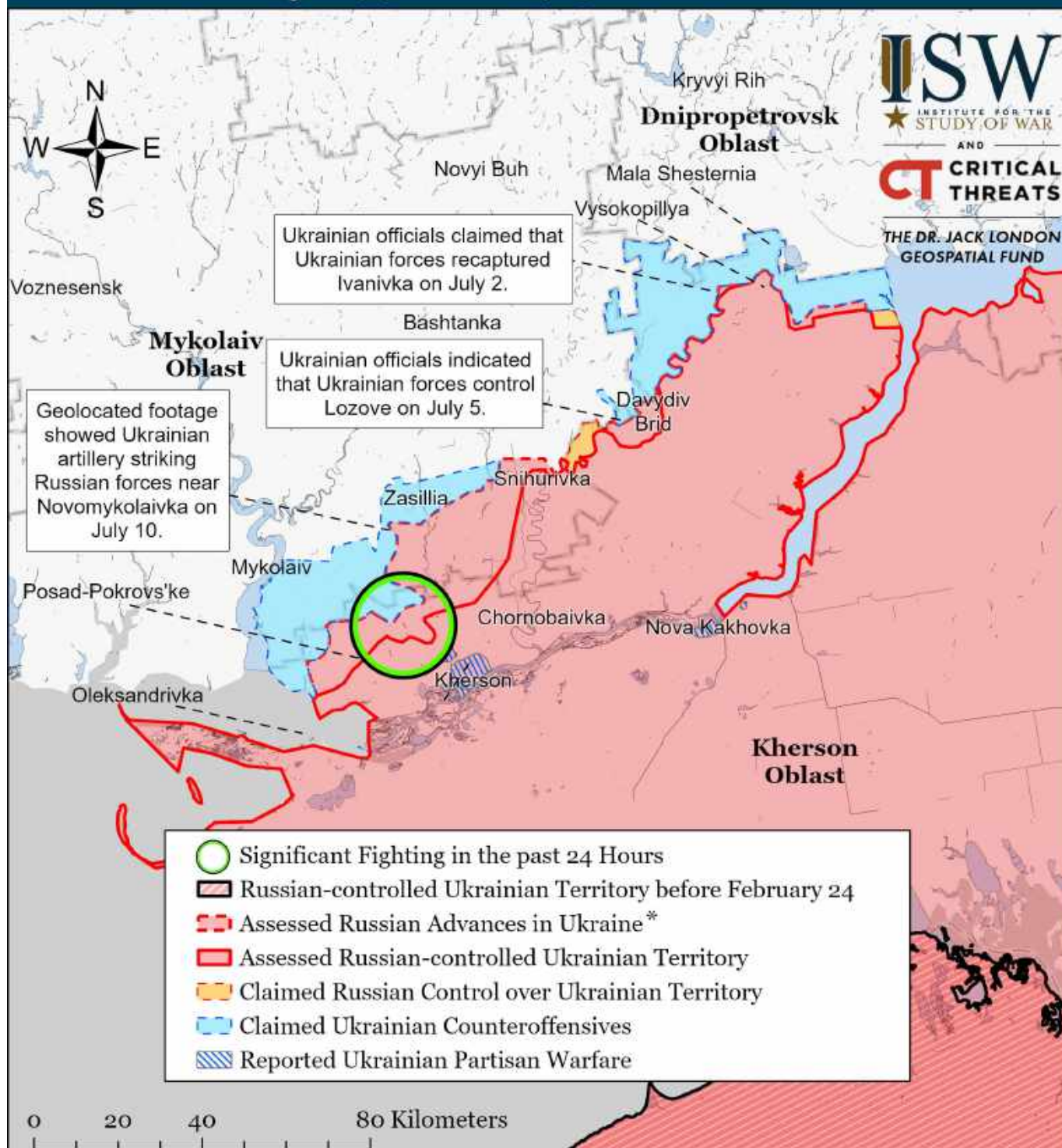
Assessed Control of Terrain Around Kherson and Mykolaiv as of July 18, 2022, 3:00 PM ET



* Assessed Russian advances are areas where ISW assesses Russian forces have operated in or launched attacks against but do not control.

Note: ISW expanded Ukrainian counteroffensives to Lozove on the left bank of the Inhulets River on July 5. The Ukrainian General Staff reported on July 6 that Ukrainian forces repelled a Russian offensive in the direction of Lozove in Kherson Oblast, indicating that Ukrainian forces still maintain a position there. Russian Telegram Channel Rybar claimed that Ukrainian forces launched unsuccessful attacks on the Snihurivka-Lozove-Bila Krynytsya line on July 4. Ukraine's Southern Operational Command stated on July 5 that Ukrainian forces repelled a Russian platoon counterattack in the Lozove area, indicating that Ukrainian forces are in Lozove. Ukrainian combat footage posted in mid-June showed Ukrainian forces shelling Russian positions near Lozove. NASA FIRMS data for July 5 shows heat anomaly concentrations south of Lozove consistent with Ukraine's Southern Operational Command report. We will update our maps as we collect and confirm more information.

Assessed Control of Terrain Around Kherson and Mykolaiv as of July 17, 2022, 3:00 PM ET

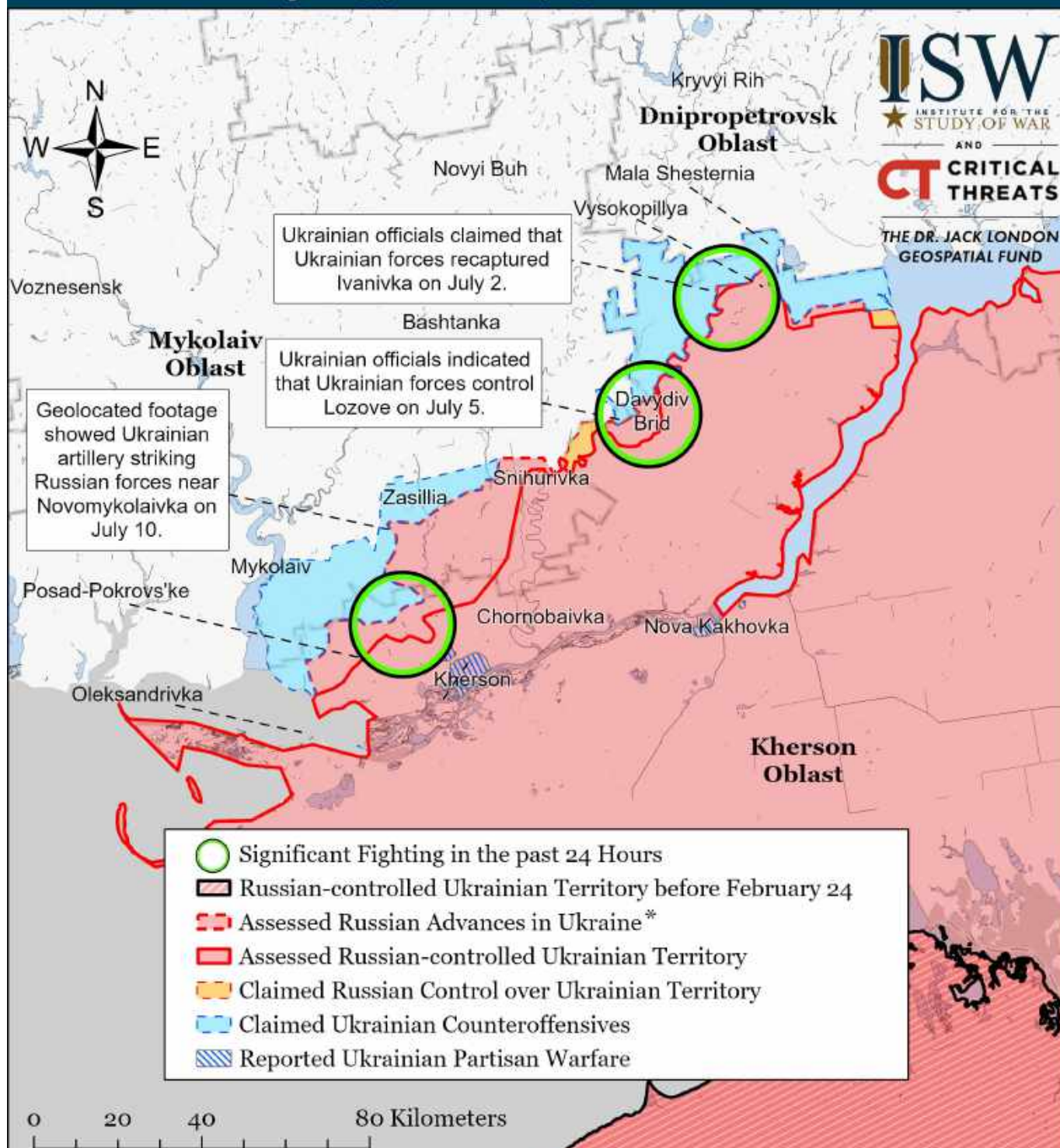


Map by George Barros, Kateryna Stepanenko, Noel Mikkelsen, and Daniel Mealie
© 2022 Institute for the Study of War and AEI's Critical Threats Project

* Assessed Russian advances are areas where ISW assesses Russian forces have operated in or launched attacks against but do not control.

Note: ISW expanded Ukrainian counteroffensives to Lozove on the left bank of the Inhulets River on July 5. The Ukrainian General Staff reported on July 6 that Ukrainian forces repelled a Russian offensive in the direction of Lozove in Kherson Oblast, indicating that Ukrainian forces still maintain a position there. Russian Telegram Channel Rybar claimed that Ukrainian forces launched unsuccessful attacks on the Snihurivka-Lozove-Bila Krynytsya line on July 4. Ukraine's Southern Operational Command stated on July 5 that Ukrainian forces repelled a Russian platoon counterattack in the Lozove area, indicating that Ukrainian forces are in Lozove. Ukrainian combat footage posted in mid-June showed Ukrainian forces shelling Russian positions near Lozove. NASA FIRMS data for July 5 shows heat anomaly concentrations south of Lozove consistent with Ukraine's Southern Operational Command report. We will update our maps as we collect and confirm more information.

Assessed Control of Terrain Around Kherson and Mykolaiv as of July 15, 2022, 3:00 PM ET

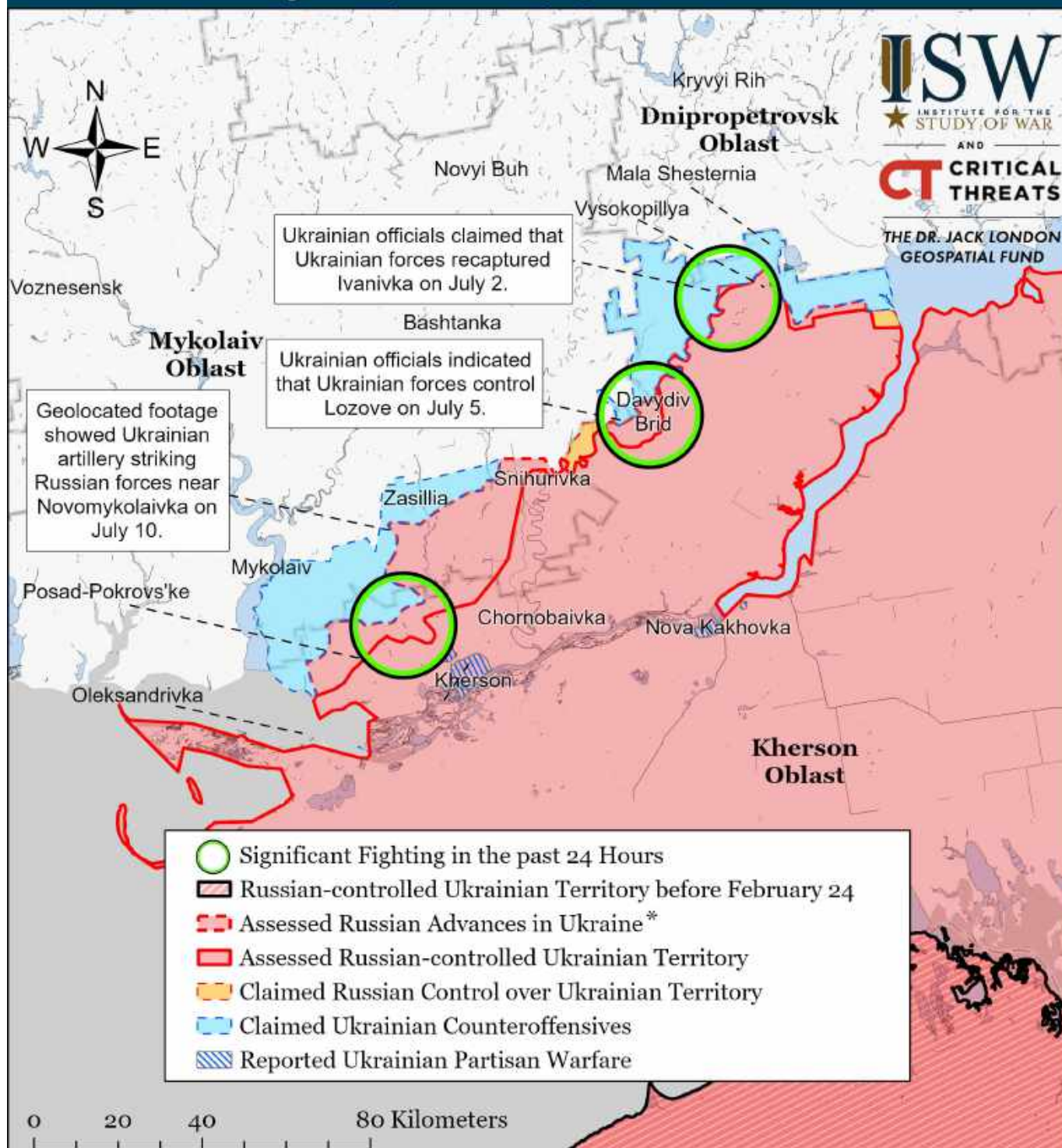


Map by George Barros, Kateryna Stepanenko, Noel Mikkelsen, and Daniel Mealie
© 2022 Institute for the Study of War and AEI's Critical Threats Project

* Assessed Russian advances are areas where ISW assesses Russian forces have operated in or launched attacks against but do not control.

Note: ISW expanded Ukrainian counteroffensives to Lozove on the left bank of the Inhulets River on July 5. The Ukrainian General Staff reported on July 6 that Ukrainian forces repelled a Russian offensive in the direction of Lozove in Kherson Oblast, indicating that Ukrainian forces still maintain a position there. Russian Telegram Channel Rybar claimed that Ukrainian forces launched unsuccessful attacks on the Snihurivka-Lozove-Bila Krynytsya line on July 4. Ukraine's Southern Operational Command stated on July 5 that Ukrainian forces repelled a Russian platoon counterattack in the Lozove area, indicating that Ukrainian forces are in Lozove. Ukrainian combat footage posted in mid-June showed Ukrainian forces shelling Russian positions near Lozove. NASA FIRMS data for July 5 shows heat anomaly concentrations south of Lozove consistent with the Ukraine's Southern Operational Command report. We will update our maps as we collect and confirm more information.

Assessed Control of Terrain Around Kherson and Mykolaiv as of July 14, 2022, 3:00 PM ET

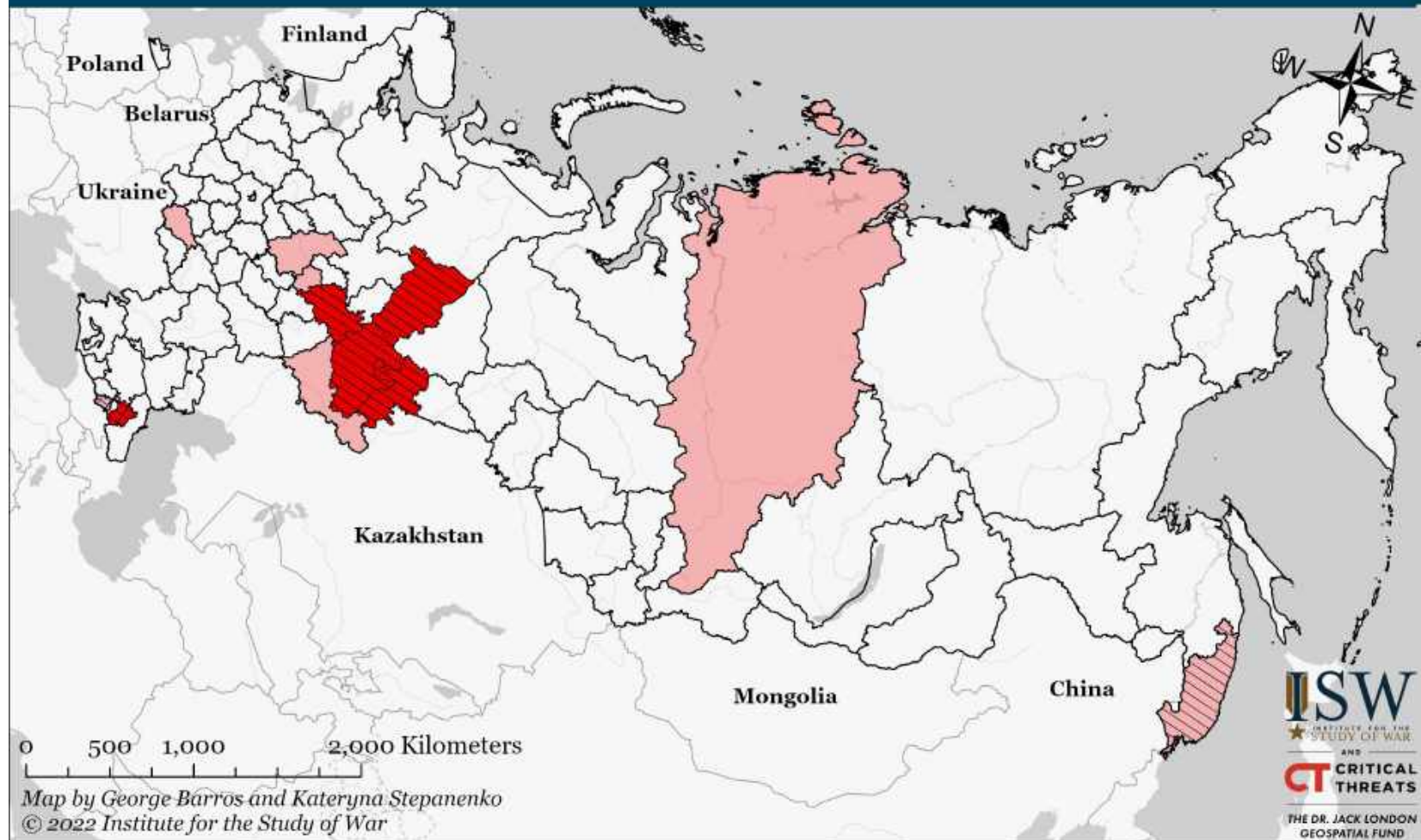






Map by George Barros, Kateryna Stepanenko, Noel Mikkelsen, and Daniel Mealie
© 2022 Institute for the Study of War and AEI's Critical Threats Project

* Assessed Russian advances are areas where ISW assesses Russian forces have operated in or launched attacks against but do not control.

Note: ISW expanded Ukrainian counteroffensives to Lozove on the left bank of the Inhulets River on July 5. The Ukrainian General Staff reported on July 6 that Ukrainian forces repelled a Russian offensive in the direction of Lozove in Kherson Oblast, indicating that Ukrainian forces still maintain a position there. Russian Telegram Channel Rybar claimed that Ukrainian forces launched unsuccessful attacks on the Snihurivka-Lozove-Bila Krynytsya line on July 4. Ukraine's Southern Operational Command stated on July 5 that Ukrainian forces repelled a Russian platoon counterattack in the Lozove area, indicating that Ukrainian forces are in Lozove. Ukrainian combat footage posted in mid-June showed Ukrainian forces shelling Russian positions near Lozove. NASA FIRMS data for July 5 shows heat anomaly concentrations south of Lozove consistent with the Ukraine's Southern Operational Command report. We will update our maps as we collect and confirm more information.

Confirmed Russian Regions (Federal Subjects) Generating "Volunteer" Units to Fight in Ukraine as of July 15, 2022



 Federal Subject Contributing or Generating a Unit	 Unit Deployed to a Training Ground before Deployment to Ukraine
 Federal Subject Contributing or Generating Multiple Units	 Unit Deployed to Ukraine