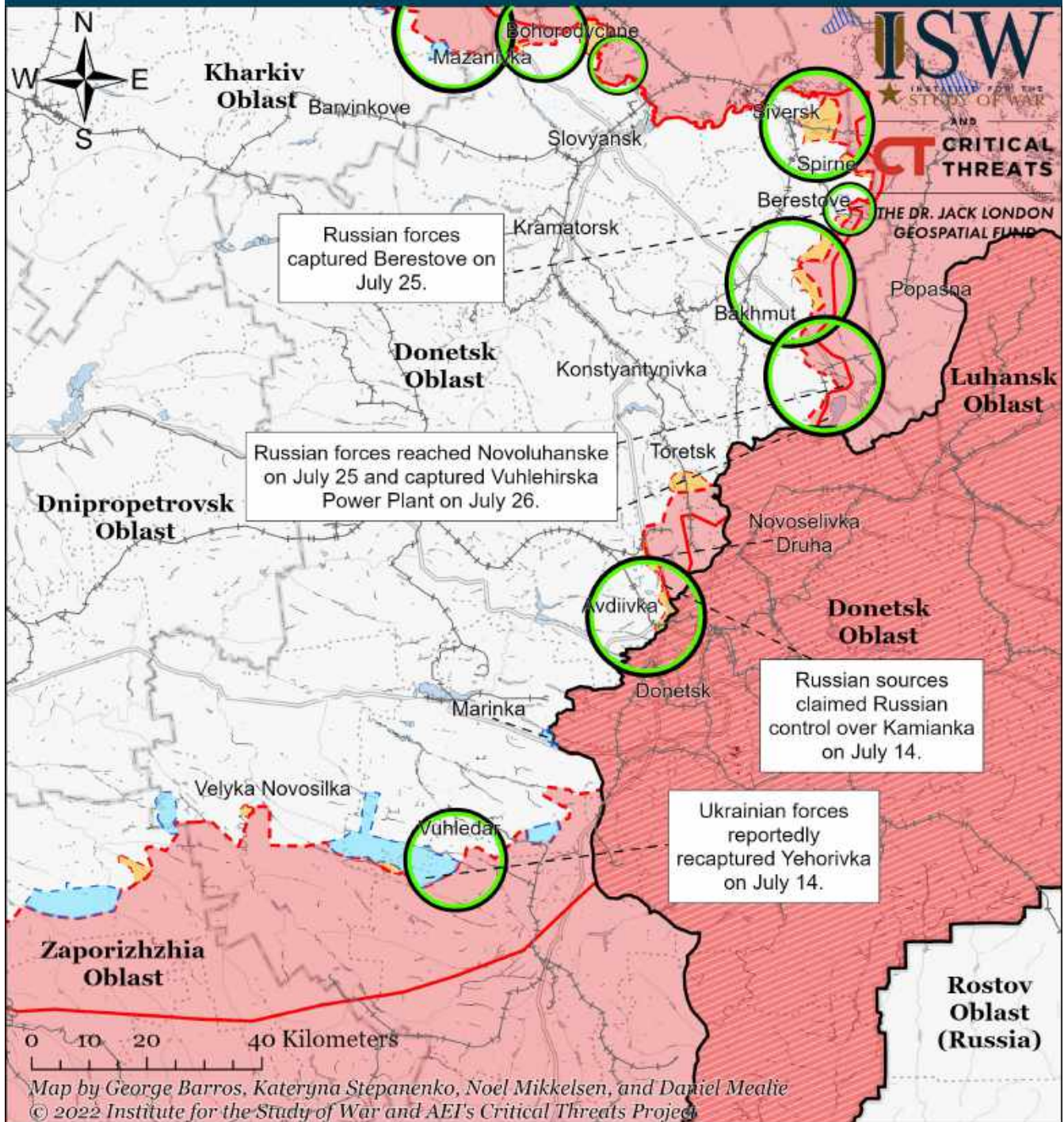


# Assessed Control of Terrain Around Donetsk as of July 28, 2022, 3:00 PM ET



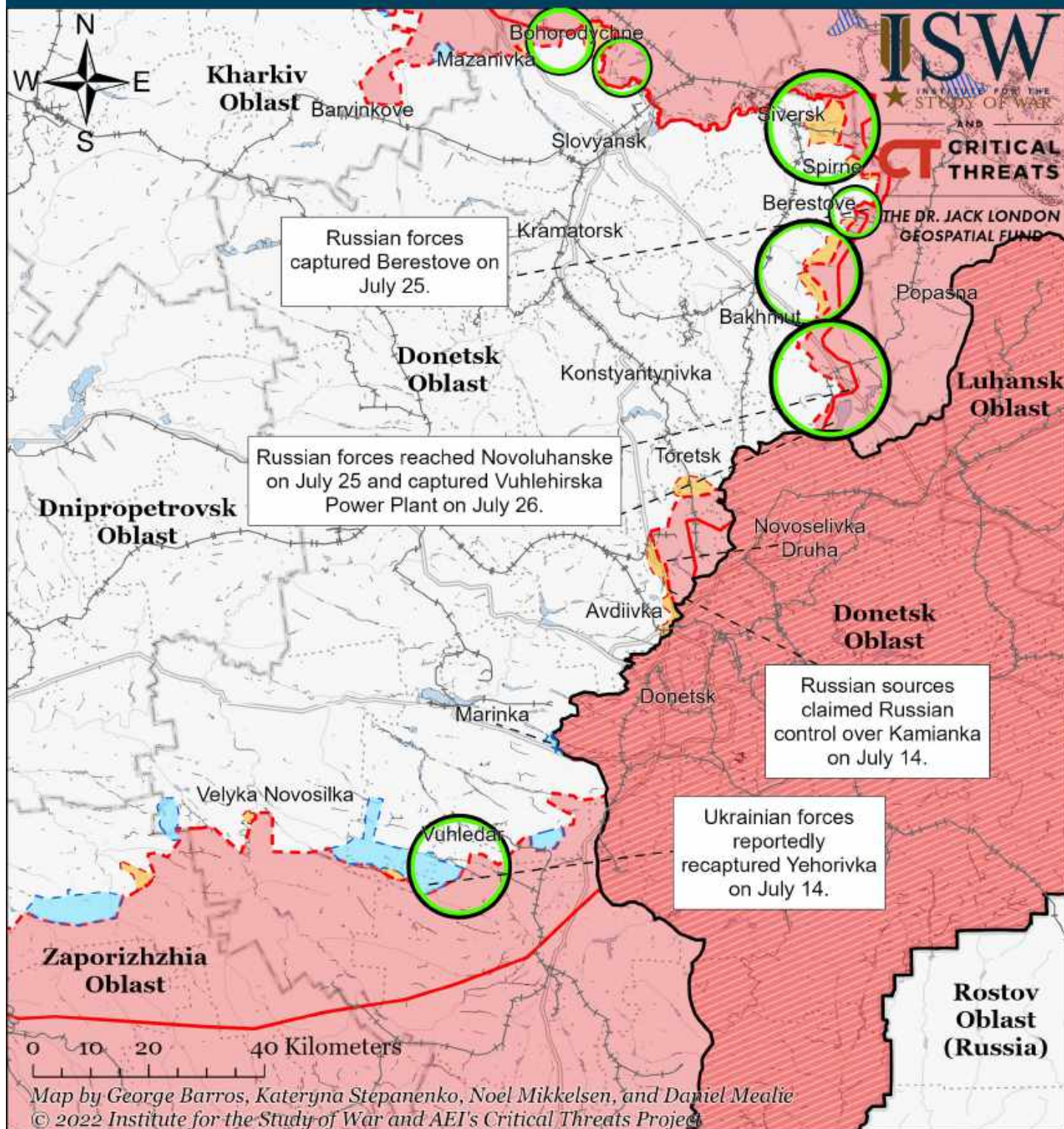
- Significant Fighting in the past 24 Hours
- Assessed Russian-controlled Ukrainian Territory
- Reported Ukrainian Partisan Warfare
- Russian-controlled Ukrainian Territory before February 24
- Claimed Russian Control over Ukrainian Territory
- Assessed Russian Advances in Ukraine\*
- Claimed Ukrainian Counteroffensives
- Major Railroads

\* Assessed Russian advances are areas where ISW assesses Russian forces have operated in or launched attacks against but do not control.

Note: ISW expanded Russian controlled Ukrainian territory in Bohorodychne based on a geolocated video of Ukrainian artillery striking a Russian ammunition warehouse in the settlement on July 25. We recessed assessed Russian advances south of Izyum heading towards Barvinkove to Brazhkyivka given that we have not seen Russian ground forces in this area since April and that the Ukrainian General Staff reported on July 28 that Ukrainian forces defeated a Russian reconnaissance-in-force attempt near Brazhkyivka.



# Assessed Control of Terrain Around Donetsk as of July 27, 2022, 3:00 PM ET

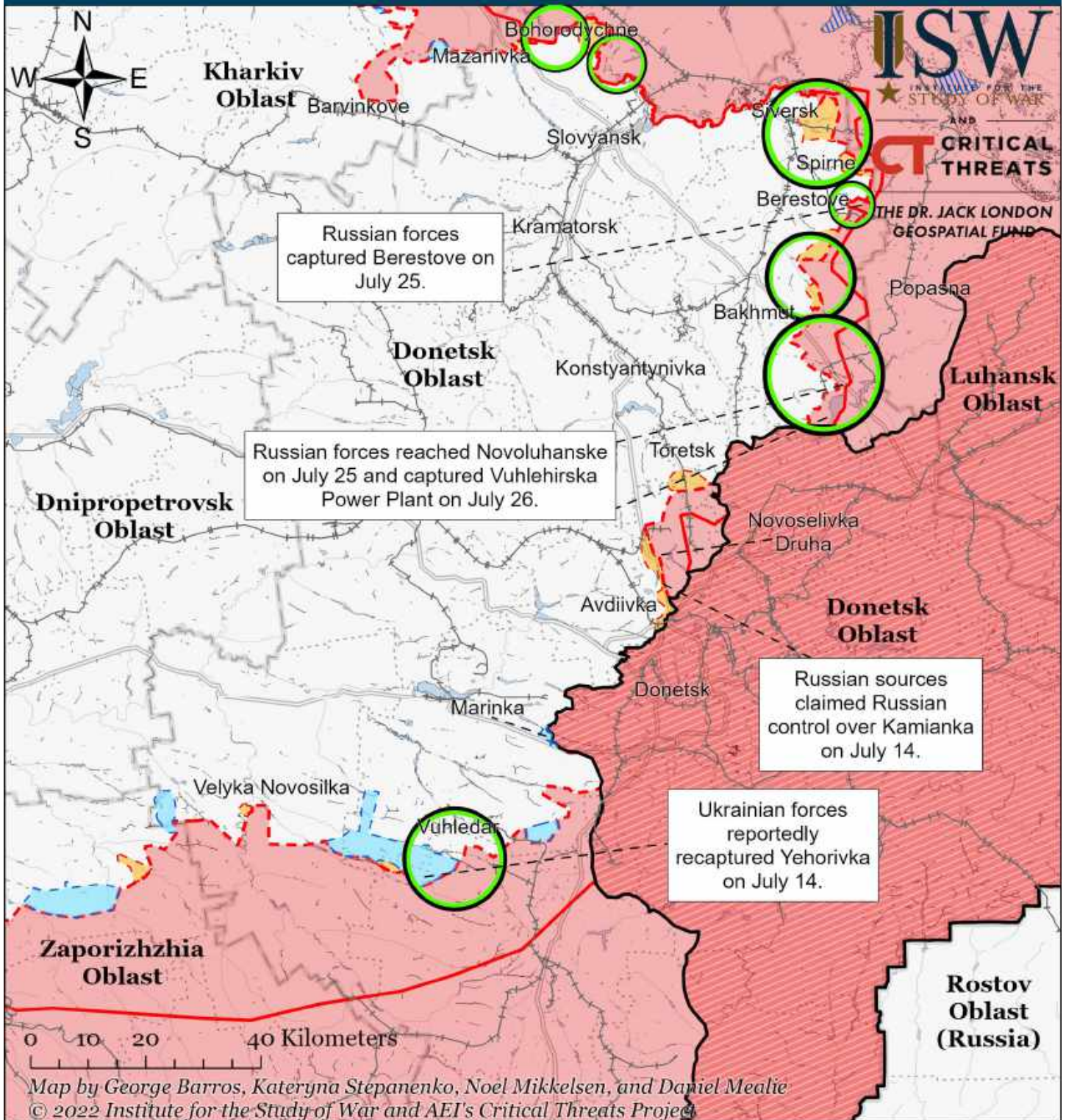


- Significant Fighting in the past 24 Hours
- Assessed Russian-controlled Ukrainian Territory
- Reported Ukrainian Partisan Warfare
- Russian-controlled Ukrainian Territory before February 24
- Claimed Russian Control over Ukrainian Territory
- + Major Railroads
- - - Assessed Russian Advances in Ukraine\*
- Claimed Ukrainian Counteroffensives

\* Assessed Russian advances are areas where ISW assesses Russian forces have operated in or launched attacks against but do not control.



# Assessed Control of Terrain Around Donetsk as of July 26, 2022, 3:00 PM ET

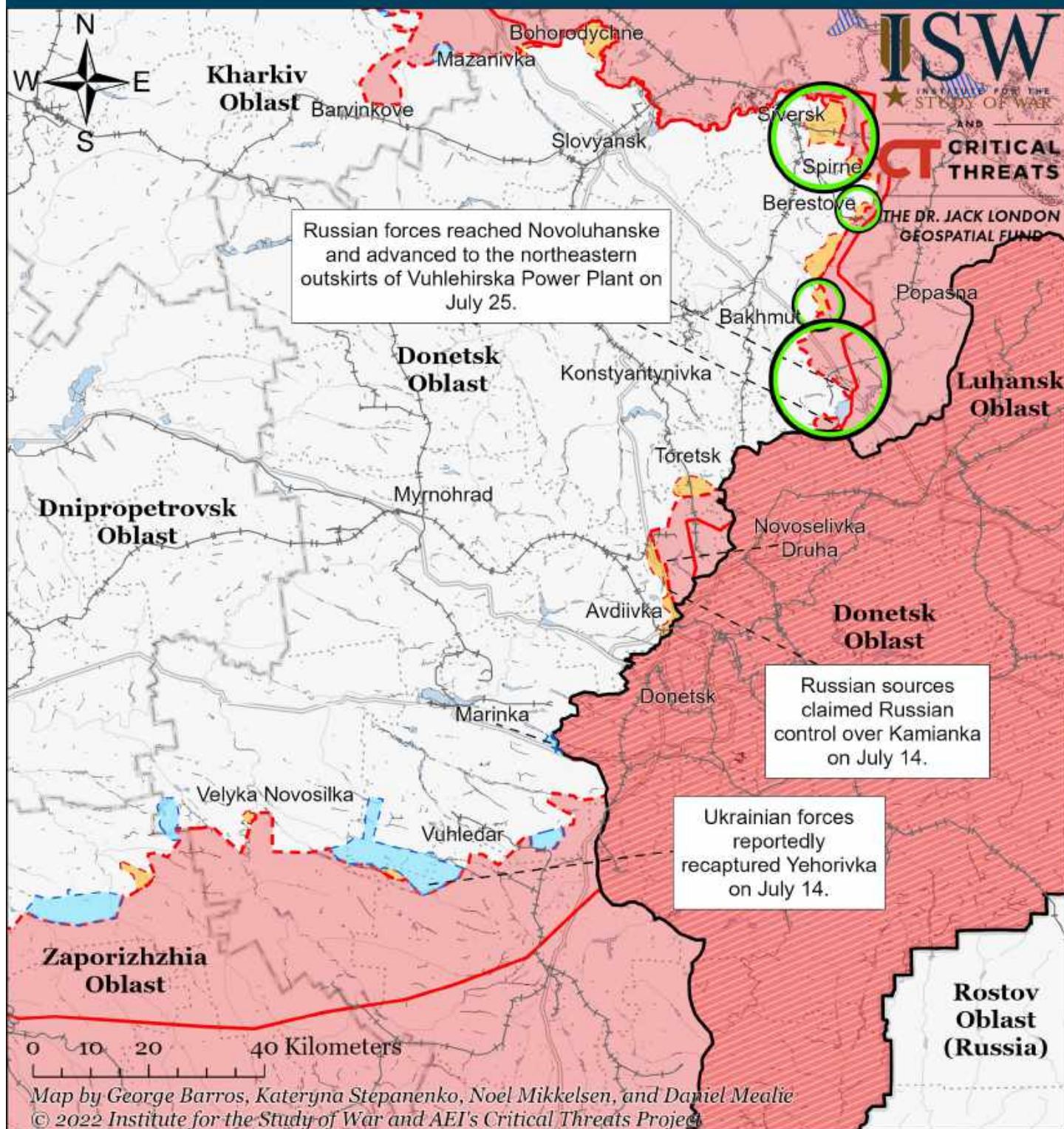


- |   |  |                                     |
|---|--|-------------------------------------|
| Significant Fighting in the past 24 Hours                 | Assessed Russian-controlled Ukrainian Territory  | Reported Ukrainian Partisan Warfare |
| Russian-controlled Ukrainian Territory before February 24 | Claimed Russian Control over Ukrainian Territory | Major Railroads                     |
| Assessed Russian Advances in Ukraine*                     | Claimed Ukrainian Counteroffensives              |                                     |

\* Assessed Russian advances are areas where ISW assesses Russian forces have operated in or launched attacks against but do not control.



# Assessed Control of Terrain Around Donetsk as of July 25, 2022, 3:00 PM ET

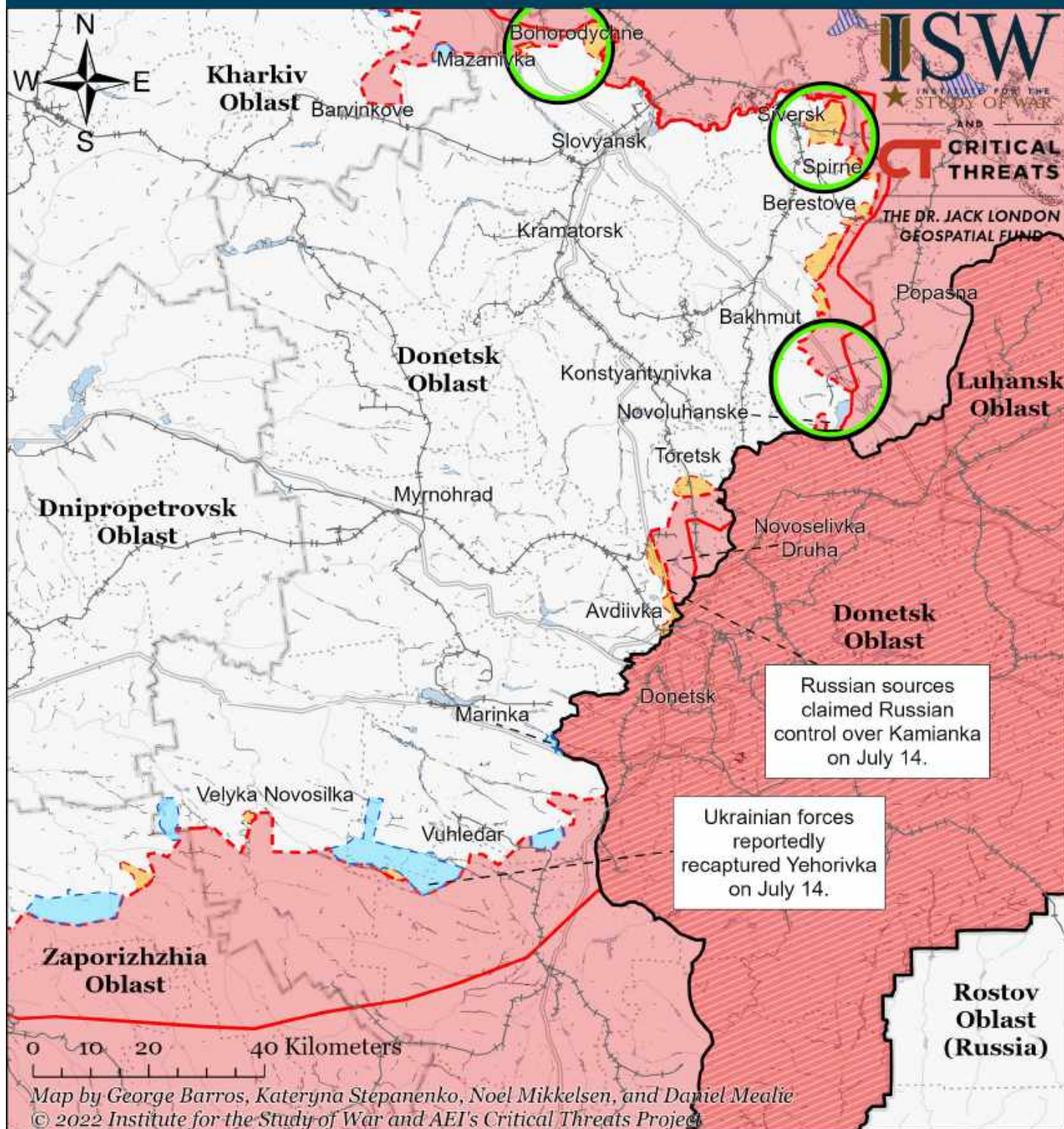


- Significant Fighting in the past 24 Hours
- Assessed Russian-controlled Ukrainian Territory
- Reported Ukrainian Partisan Warfare
- Russian-controlled Ukrainian Territory before February 24
- Claimed Russian Control over Ukrainian Territory
- Major Railroads
- - - Assessed Russian Advances in Ukraine\*
- Claimed Ukrainian Counteroffensives

\* Assessed Russian advances are areas where ISW assesses Russian forces have operated in or launched attacks against but do not control.



# Assessed Control of Terrain Around Donetsk as of July 24, 2022, 3:00 PM ET



- Significant Fighting in the past 24 Hours
- Assessed Russian-controlled Ukrainian Territory
- Reported Ukrainian Partisan Warfare
- Russian-controlled Ukrainian Territory before February 24
- Claimed Russian Control over Ukrainian Territory
- Assessed Russian Advances in Ukraine\*
- Claimed Ukrainian Counteroffensives
- Major Railroads

\* Assessed Russian advances are areas where ISW assesses Russian forces have operated in or launched attacks against but do not control.



# Assessed Control of Terrain in Ukraine and Main Russian Maneuver Axes as of July 28, 2022, 3:00 PM ET



Map by George Barros, Kateryna Stepanenko, Noel Mikkelsen, and Daniel Mealie  
© 2022 Institute for the Study of War and AEI's Critical Threats Project

\* Assessed Russian advances are areas where ISW assesses Russian forces have operated in or launched attacks against but do not control.

# Assessed Control of Terrain in Ukraine and Main Russian Maneuver Axes as of July 27, 2022, 3:00 PM ET



Map by George Barros, Kateryna Stepanenko, Noel Mikkelsen, and Daniel Mealie  
© 2022 Institute for the Study of War and AEI's Critical Threats Project

\* Assessed Russian advances are areas where ISW assesses Russian forces have operated in or launched attacks against but do not control.



# Assessed Control of Terrain in Ukraine and Main Russian Maneuver Axes as of July 26, 2022, 3:00 PM ET



Map by George Barros, Kateryna Stepanenko, Noel Mikkelsen, and Daniel Mealie  
© 2022 Institute for the Study of War and AEI's Critical Threats Project

\* Assessed Russian advances are areas where ISW assesses Russian forces have operated in or launched attacks against but do not control.



# Assessed Control of Terrain in Ukraine and Main Russian Maneuver Axes as of July 25, 2022, 3:00 PM ET



Map by George Barros, Kateryna Stepanenko, Noel Mikkelsen, and Daniel Mealie  
© 2022 Institute for the Study of War and AEI's Critical Threats Project

\* Assessed Russian advances are areas where ISW assesses Russian forces have operated in or launched attacks against but do not control.



# Assessed Control of Terrain in Ukraine and Main Russian Maneuver Axes as of July 24, 2022, 3:00 PM ET

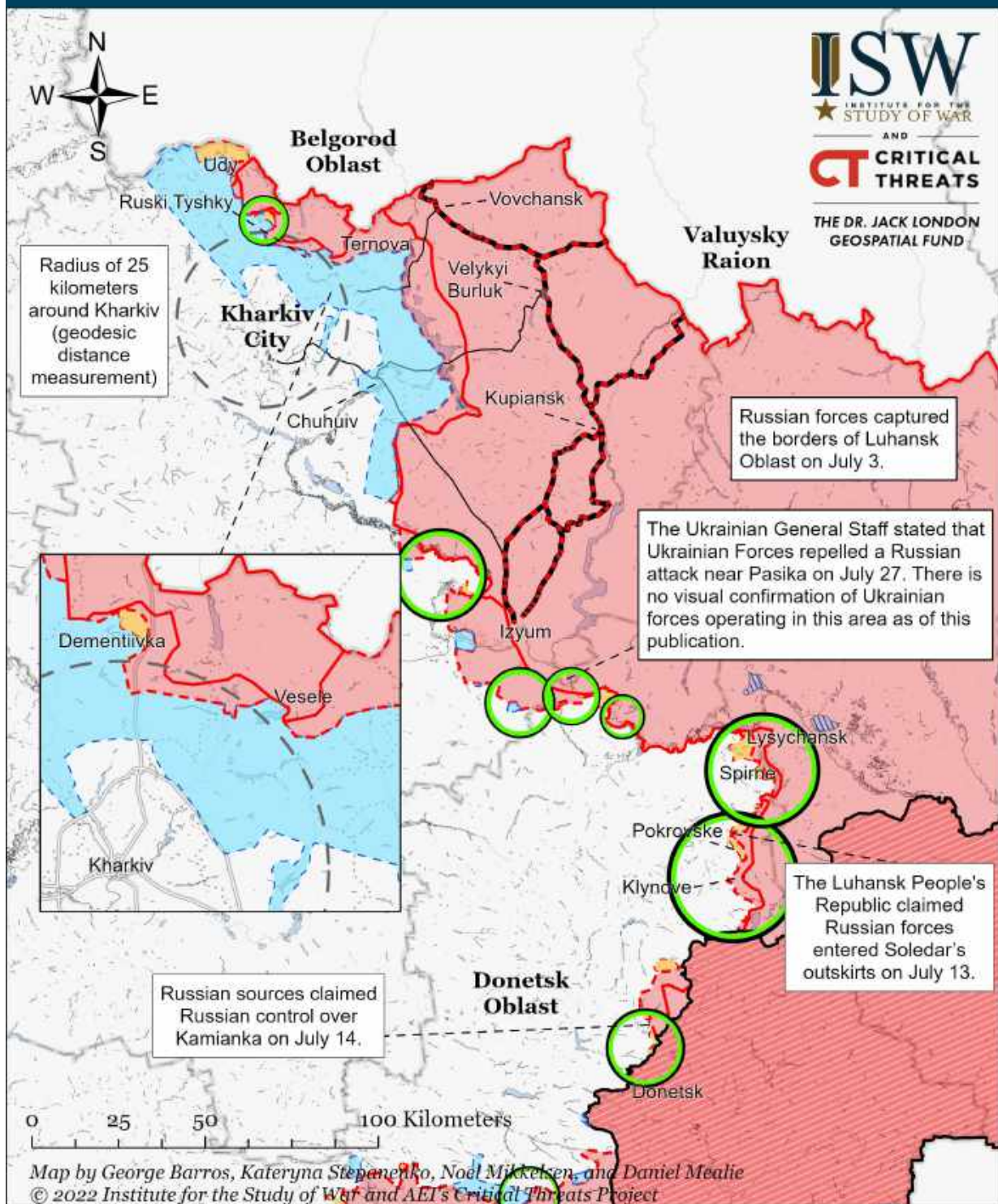


Map by George Barros, Kateryna Stepanenko, Noel Mikkelsen, and Daniel Mealie  
© 2022 Institute for the Study of War and AEI's Critical Threats Project

\* Assessed Russian advances are areas where ISW assesses Russian forces have operated in or launched attacks against but do not control.



# Assessed Control of Terrain Around Kharkiv as of July 28, 2022, 3:00 PM ET



Significant Fighting in the past 24 Hours

Key Ukrainian Roads

Russian Ground Lines of Communication

Russian-controlled Ukrainian Territory before February 24

Assessed Russian Advances in Ukraine\*

Assessed Russian-controlled Ukrainian Territory

Claimed Russian Control over Ukrainian Territory

Claimed Ukrainian Counteroffensives

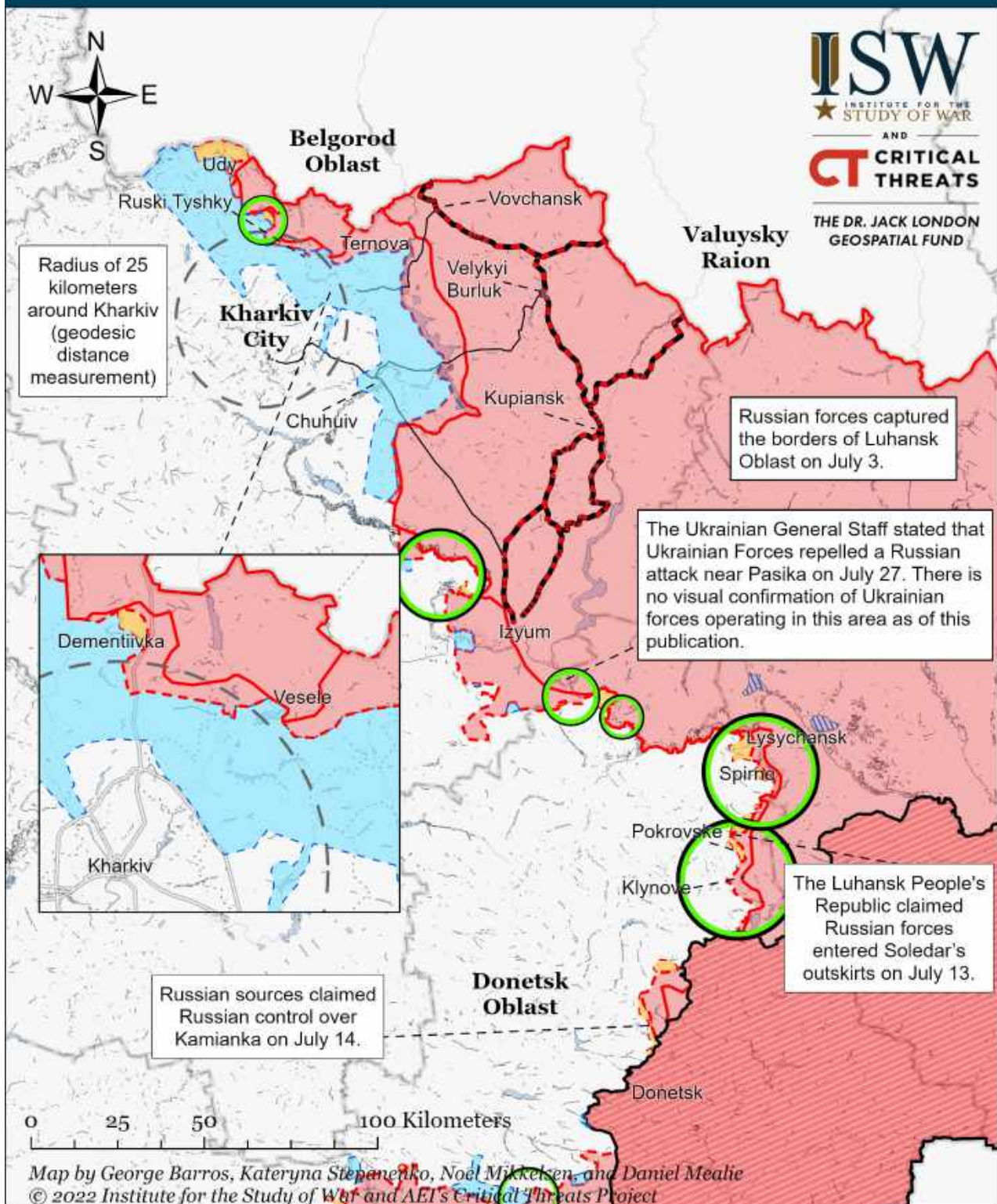
Reported Ukrainian Partisan Warfare

\* Assessed Russian advances are areas where ISW assesses Russian forces have operated in or launched attacks against but do not control.

Note: ISW expanded Russian controlled Ukrainian territory in Bohorodychne based on a geolocated video of Ukrainian artillery striking a Russian ammunition warehouse in the settlement on July 25. We recessed assessed Russian advances south of Izyum heading towards Barvinkove to Brazhkyivka given that we have not seen Russian ground forces in this area since April and that the Ukrainian General Staff reported on July 28 that Ukrainian forces defeated a Russian reconnaissance-in-force attempt near Brazhkyivka.



# Assessed Control of Terrain Around Kharkiv as of July 27, 2022, 3:00 PM ET



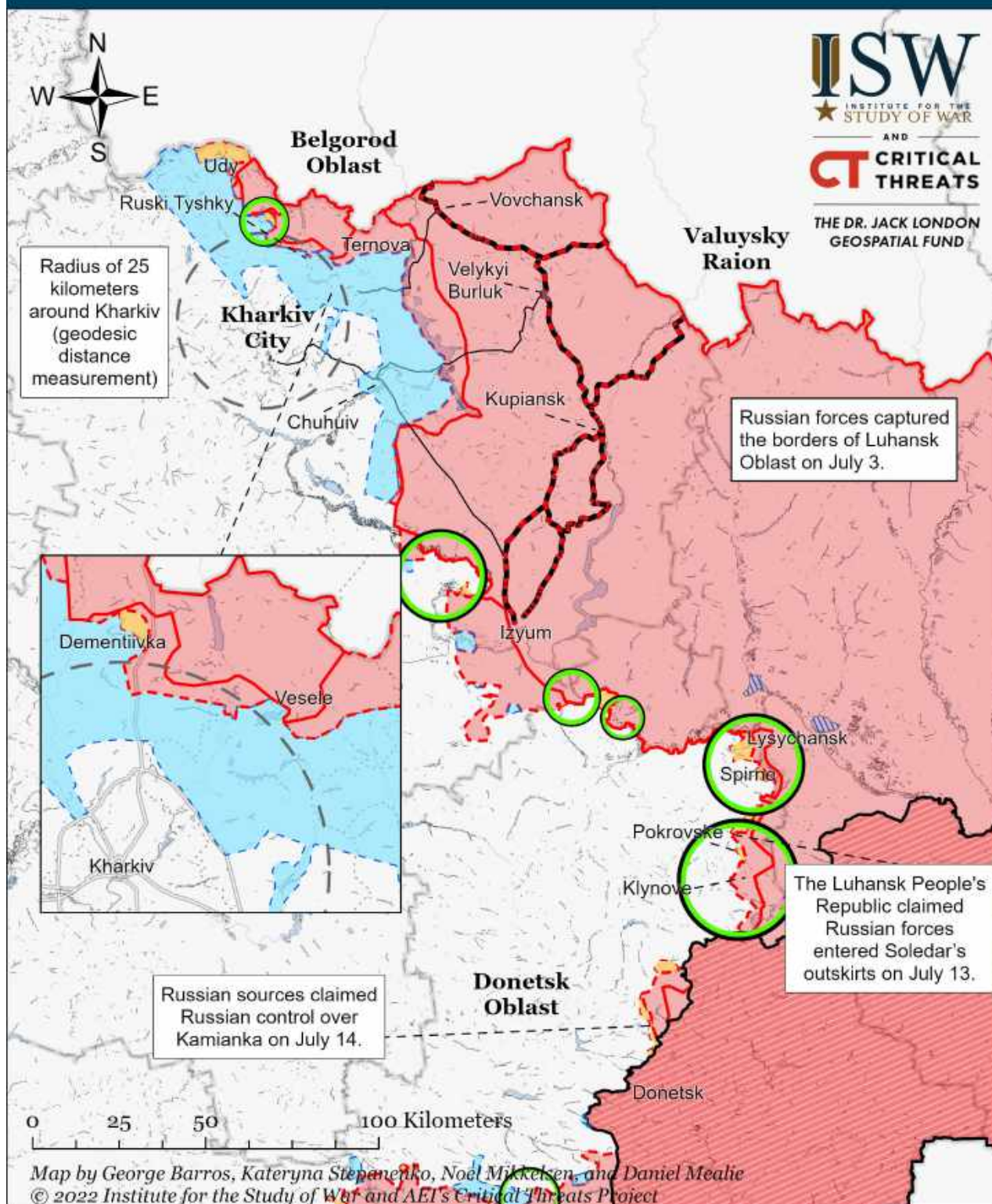
- |  |   |  |
|--|---|--|
| <span style="color: green;">○</span> Significant Fighting in the past 24 Hours | <span style="border: 1px dashed red; padding: 2px;"> </span> Russian-controlled Ukrainian Territory before February 24                    | <span style="background-color: yellow; border: 1px solid black; padding: 2px;"> </span> Claimed Russian Control over Ukrainian Territory |
| — Key Ukrainian Roads  | <span style="color: red;">---</span> Assessed Russian Advances in Ukraine*  | <span style="background-color: lightblue; border: 1px solid black; padding: 2px;"> </span> Claimed Ukrainian Counteroffensives           |
| <span style="color: red;">---</span> Russian Ground Lines of Communication     | <span style="background-color: lightred; border: 1px solid black; padding: 2px;"> </span> Assessed Russian-controlled Ukrainian Territory | <span style="background-color: lightblue; border: 1px solid black; padding: 2px;"> </span> Reported Ukrainian Partisan Warfare           |

\* Assessed Russian advances are areas where ISW assesses Russian forces have operated in or launched attacks against but do not control.

Note: ISW expanded Russian controlled Ukrainian territory in Bohorodychne based on a geolocated video of Ukrainian artillery striking Russian ammunition warehouse in the settlement on July 25.



# Assessed Control of Terrain Around Kharkiv as of July 26, 2022, 3:00 PM ET



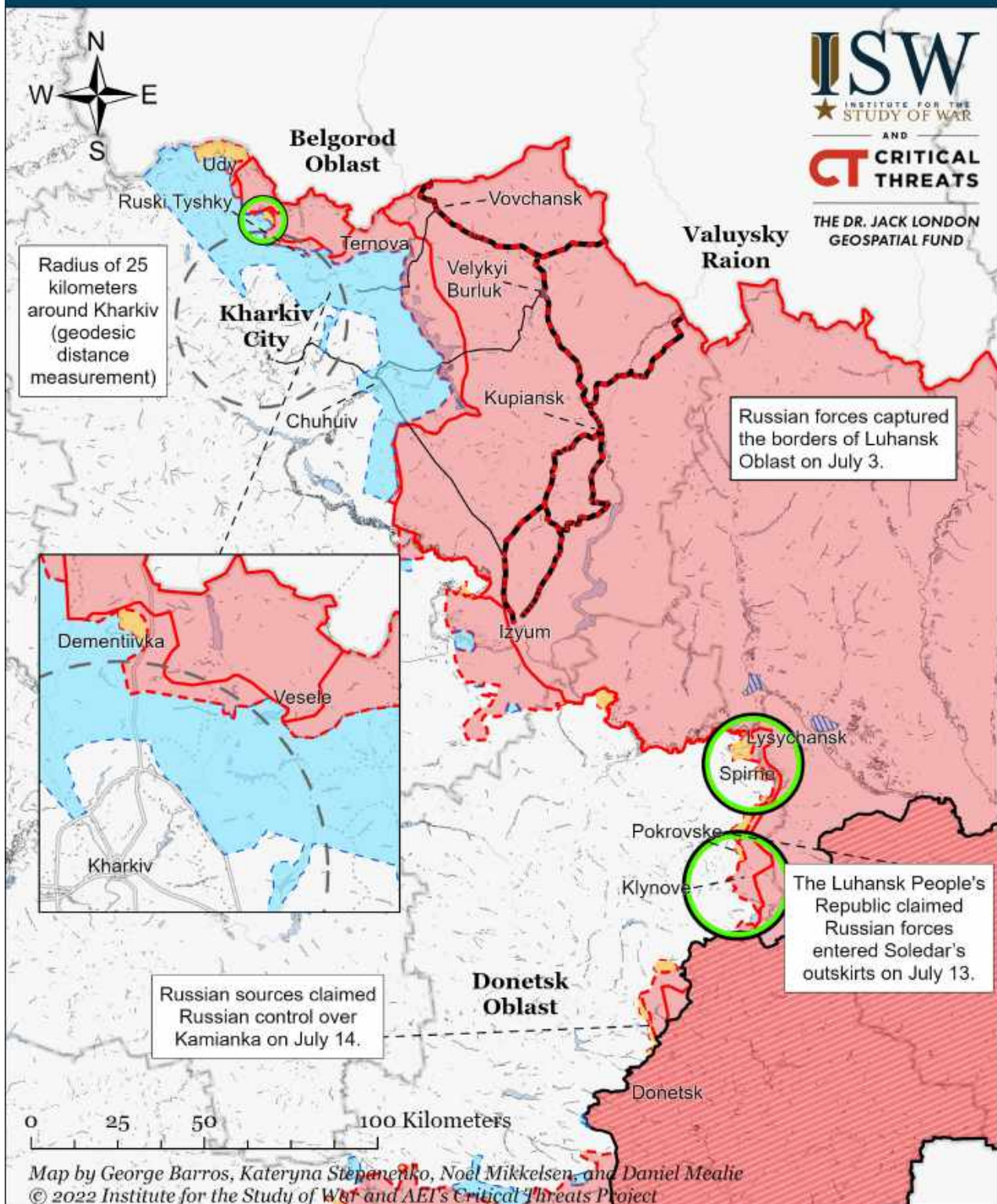
- Significant Fighting in the past 24 Hours
- Key Ukrainian Roads
- Russian Ground Lines of Communication
- Russian-controlled Ukrainian Territory before February 24
- Assessed Russian Advances in Ukraine\*
- Assessed Russian-controlled Ukrainian Territory
- Claimed Russian Control over Ukrainian Territory
- Claimed Ukrainian Counteroffensives
- Reported Ukrainian Partisan Warfare

\* Assessed Russian advances are areas where ISW assesses Russian forces have operated in or launched attacks against but do not control.

Note: ISW expanded Russian controlled Ukrainian territory in Bohorodychne based on a geolocated video of Ukrainian artillery striking Russian ammunition warehouse in the settlement on July 25.



# Assessed Control of Terrain Around Kharkiv as of July 25, 2022, 3:00 PM ET



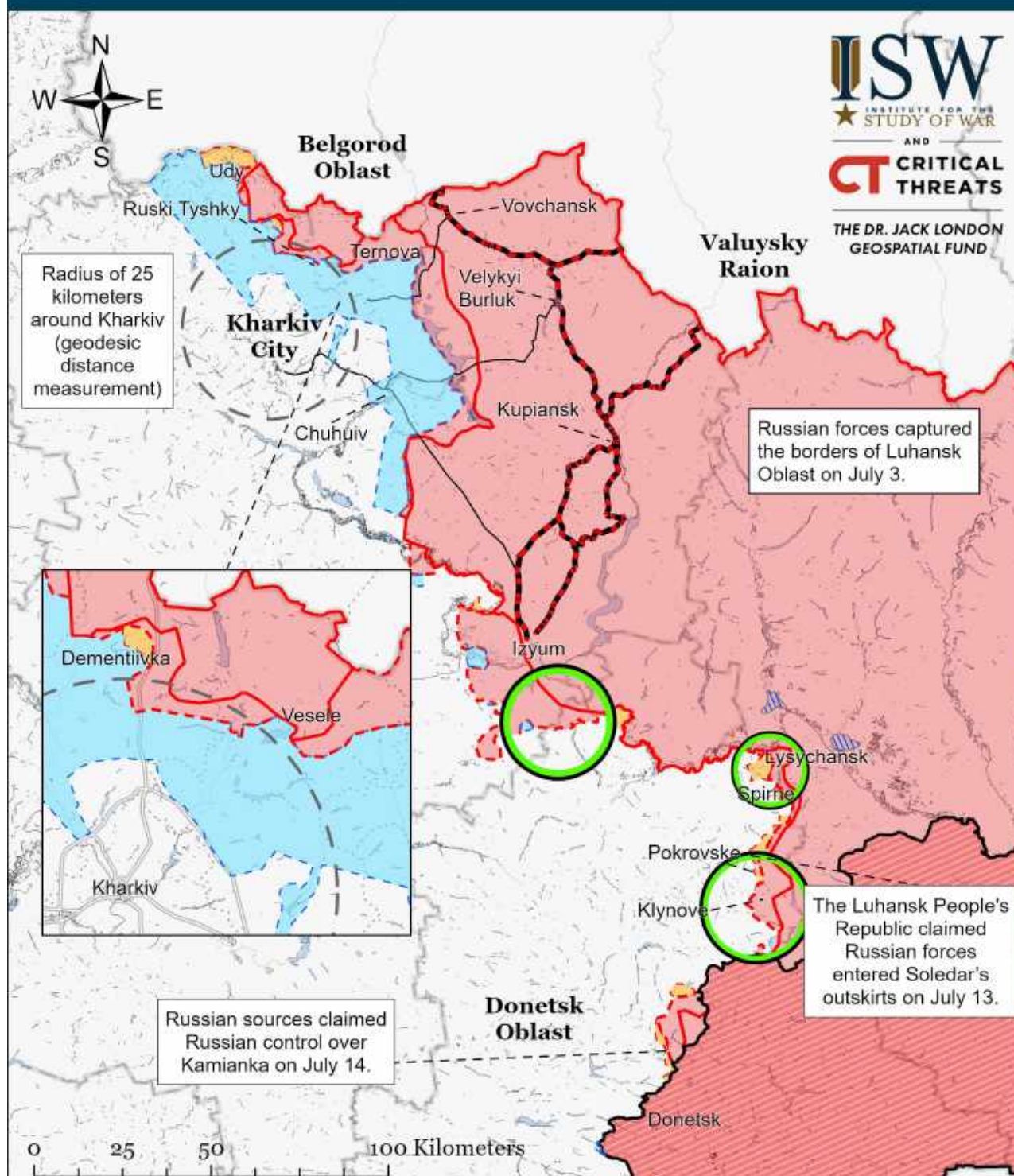
- Significant Fighting in the past 24 Hours
- Key Ukrainian Roads
- Russian Ground Lines of Communication
- Russian-controlled Ukrainian Territory before February 24
- Assessed Russian Advances in Ukraine\*
- Assessed Russian-controlled Ukrainian Territory
- Claimed Russian Control over Ukrainian Territory
- Claimed Ukrainian Counteroffensives
- Reported Ukrainian Partisan Warfare

\* Assessed Russian advances are areas where ISW assesses Russian forces have operated in or launched attacks against but do not control.

Note: ISW expanded Russian controlled Ukrainian territory in Bohorodychne based on a geolocated video of Ukrainian artillery striking a Russian ammunition warehouse in the settlement on July 25.



# Assessed Control of Terrain Around Kharkiv as of July 24, 2022, 3:00 PM ET



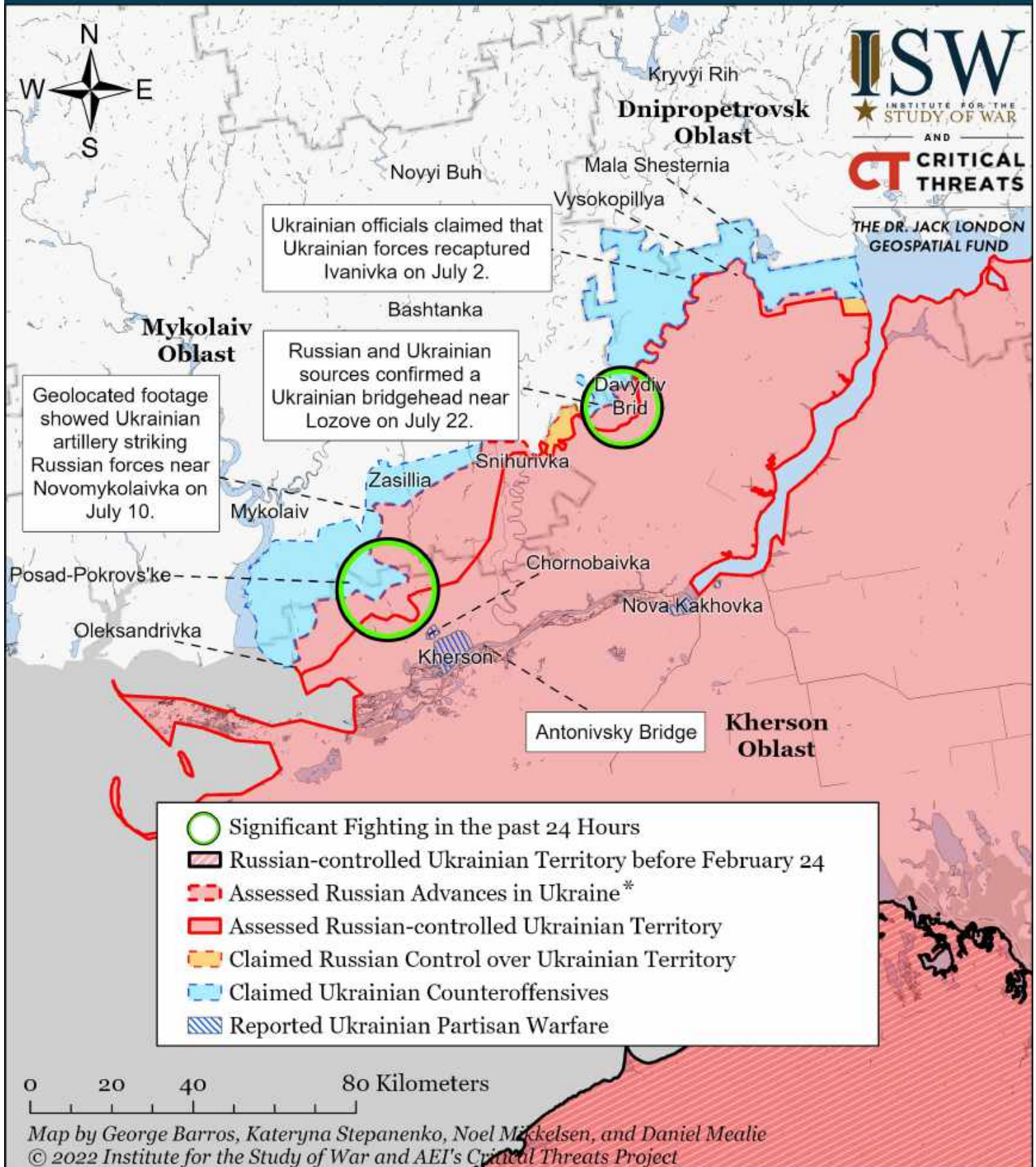
Map by George Barros, Kateryna Stepanenko, Noel Mikkelsen, and Daniel Mealie  
© 2022 Institute for the Study of War and AEI's Critical Threats Project

- |   |   |  |
|---|---|--|
| Significant Fighting in the past 24 Hours | Russian-controlled Ukrainian Territory before February 24 | Claimed Russian Control over Ukrainian Territory |
| Key Ukrainian Roads                       | Assessed Russian Advances in Ukraine*                     | Claimed Ukrainian Counteroffensives              |
| Russian Ground Lines of Communication     | Assessed Russian-controlled Ukrainian Territory           | Reported Ukrainian Partisan Warfare              |

\* Assessed Russian advances are areas where ISW assesses Russian forces have operated in or launched attacks against but do not control.



# Assessed Control of Terrain Around Kherson and Mykolaiv as of July 28, 2022, 3:00 PM ET



\* Assessed Russian advances are areas where ISW assesses Russian forces have operated in or launched attacks against but do not control.



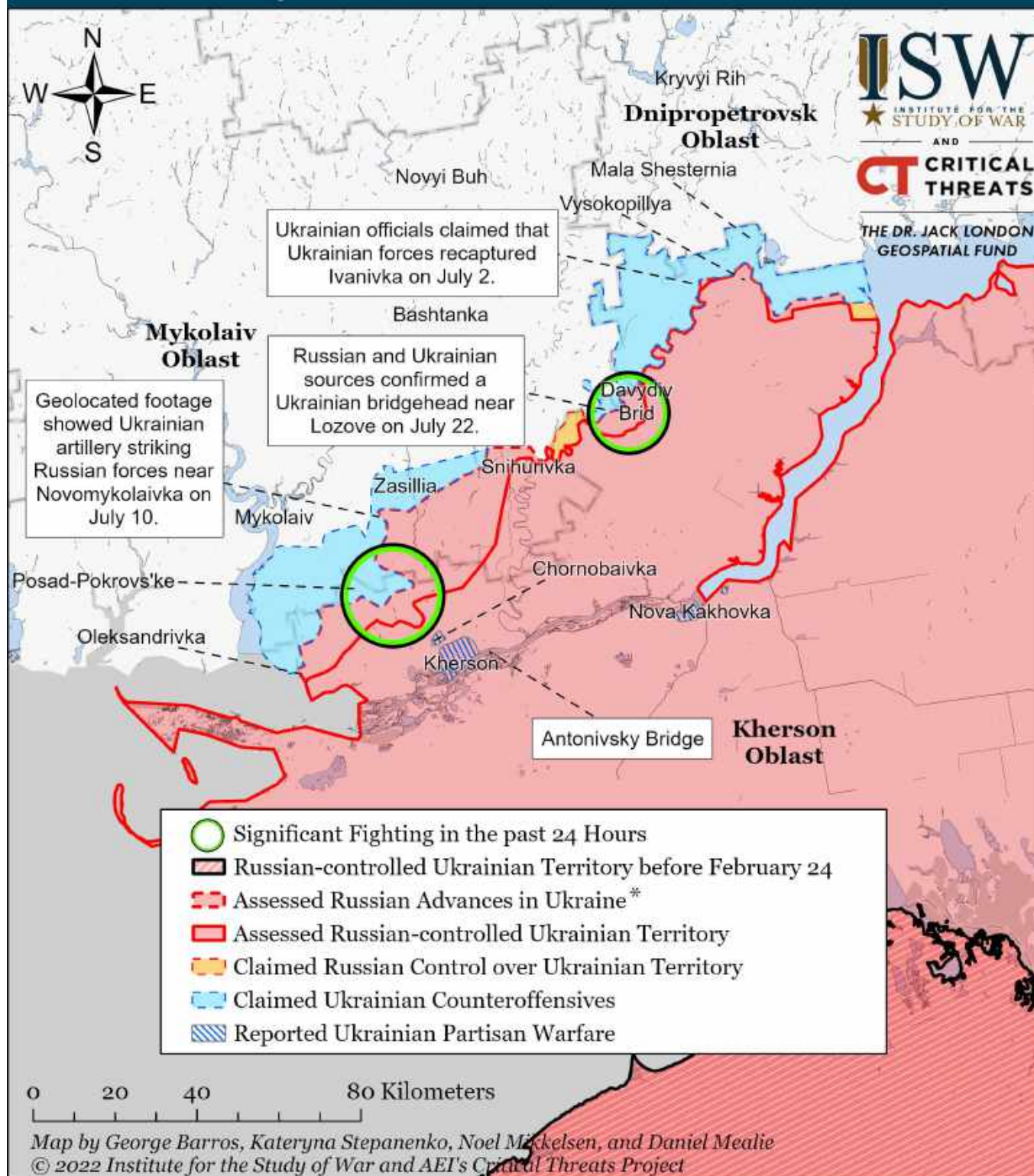
# Assessed Control of Terrain Around Kherson and Mykolaiv as of July 27, 2022, 3:00 PM ET



\* Assessed Russian advances are areas where ISW assesses Russian forces have operated in or launched attacks against but do not control.



# Assessed Control of Terrain Around Kherson and Mykolaiv as of July 26, 2022, 3:00 PM ET

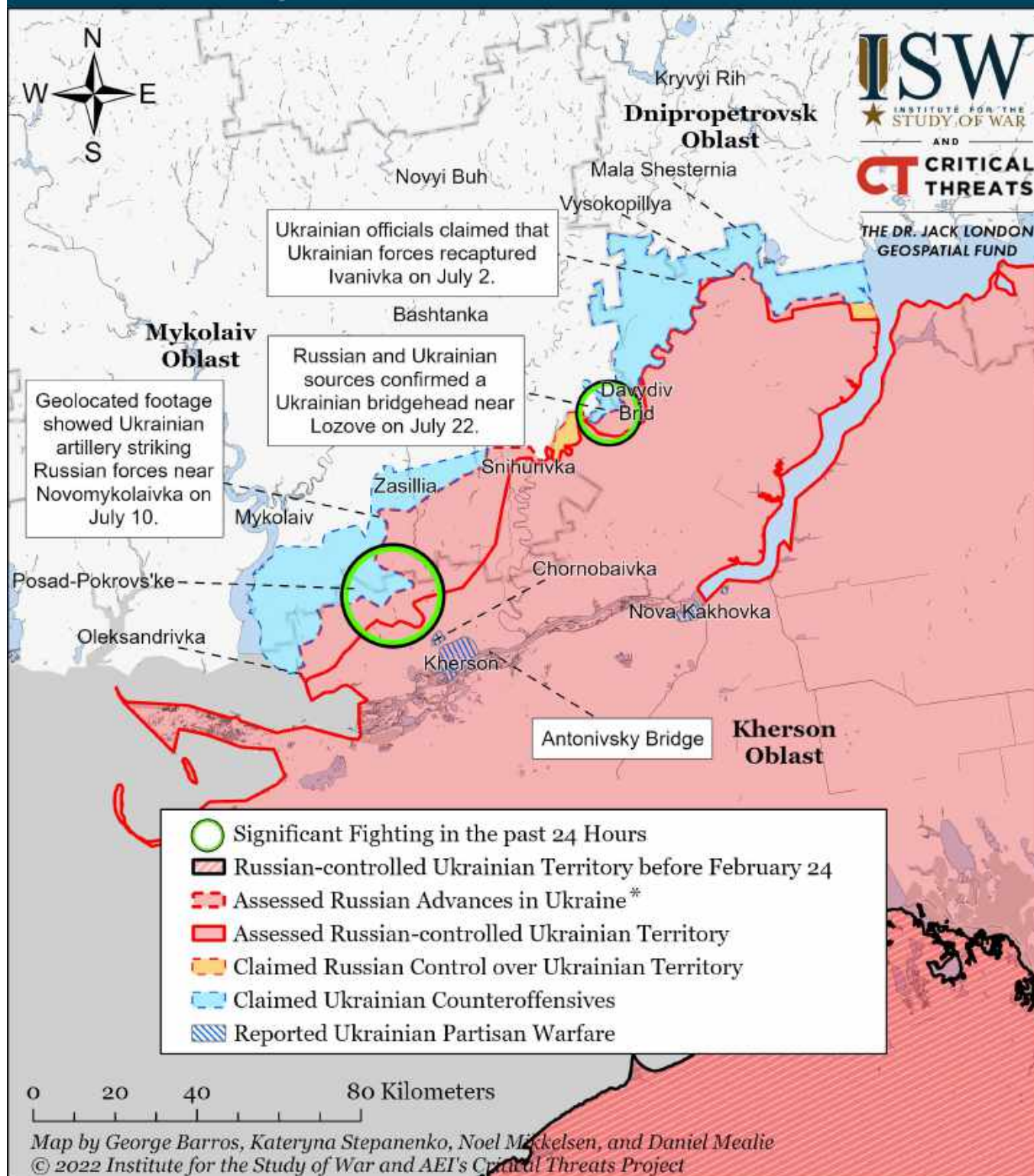


\* Assessed Russian advances are areas where ISW assesses Russian forces have operated in or launched attacks against but do not control.

Note: ISW expanded Ukrainian counteroffensives to Lozove on the left bank of the Inhulets River on July 5. The Ukrainian General Staff reported on July 6 that Ukrainian forces repelled a Russian offensive in the direction of Lozove in Kherson Oblast, indicating that Ukrainian forces still maintain a position there. Russian Telegram Channel Rybar claimed that Ukrainian forces launched unsuccessful attacks on the Snihurivka-Lozove-Bila Krynytsya line on July 4. Ukraine's Southern Operational Command stated on July 20 that Ukrainian forces repelled a Russian platoon counterattack in the Lozove area, indicating that Ukrainian forces are in Lozove. Russian Telegram channel Rybar confirmed that Ukrainian forces crossed the river and are in Lozove on July 22. The Ukrainian General Staff stated that Ukrainian forces defeated a Russian attack near Bilohirka on July 22, indicating Ukrainian forces also likely control Bilohirka. We will update our maps as we collect and confirm more information.



# Assessed Control of Terrain Around Kherson and Mykolaiv as of July 25, 2022, 3:00 PM ET

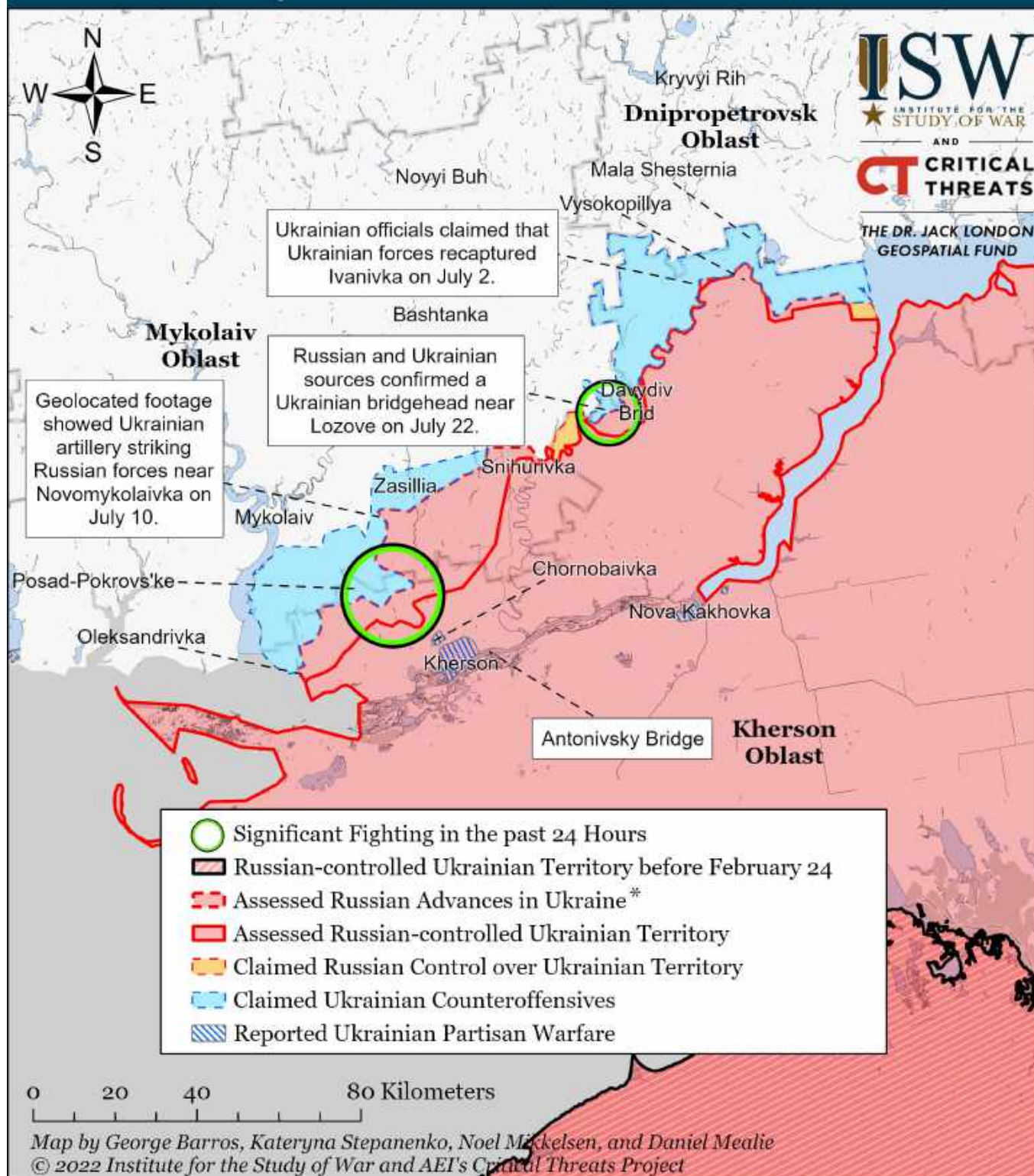


\* Assessed Russian advances are areas where ISW assesses Russian forces have operated in or launched attacks against but do not control.

Note: ISW expanded Ukrainian counteroffensives to Lozove on the left bank of the Inhulets River on July 5. The Ukrainian General Staff reported on July 6 that Ukrainian forces repelled a Russian offensive in the direction of Lozove in Kherson Oblast, indicating that Ukrainian forces still maintain a position there. Russian Telegram Channel Rybar claimed that Ukrainian forces launched unsuccessful attacks on the Snihurivka-Lozove-Bila Krynytsya line on July 4. Ukraine's Southern Operational Command stated on July 20 that Ukrainian forces repelled a Russian platoon counterattack in the Lozove area, indicating that Ukrainian forces are in Lozove. Russian Telegram channel Rybar confirmed that Ukrainian forces crossed the river and are in Lozove on July 22. The Ukrainian General Staff stated that Ukrainian forces defeated a Russian attack near Bilohirka on July 22, indicating Ukrainian forces also likely control Bilohirka. We will update our maps as we collect and confirm more information.



# Assessed Control of Terrain Around Kherson and Mykolaiv as of July 24, 2022, 3:00 PM ET

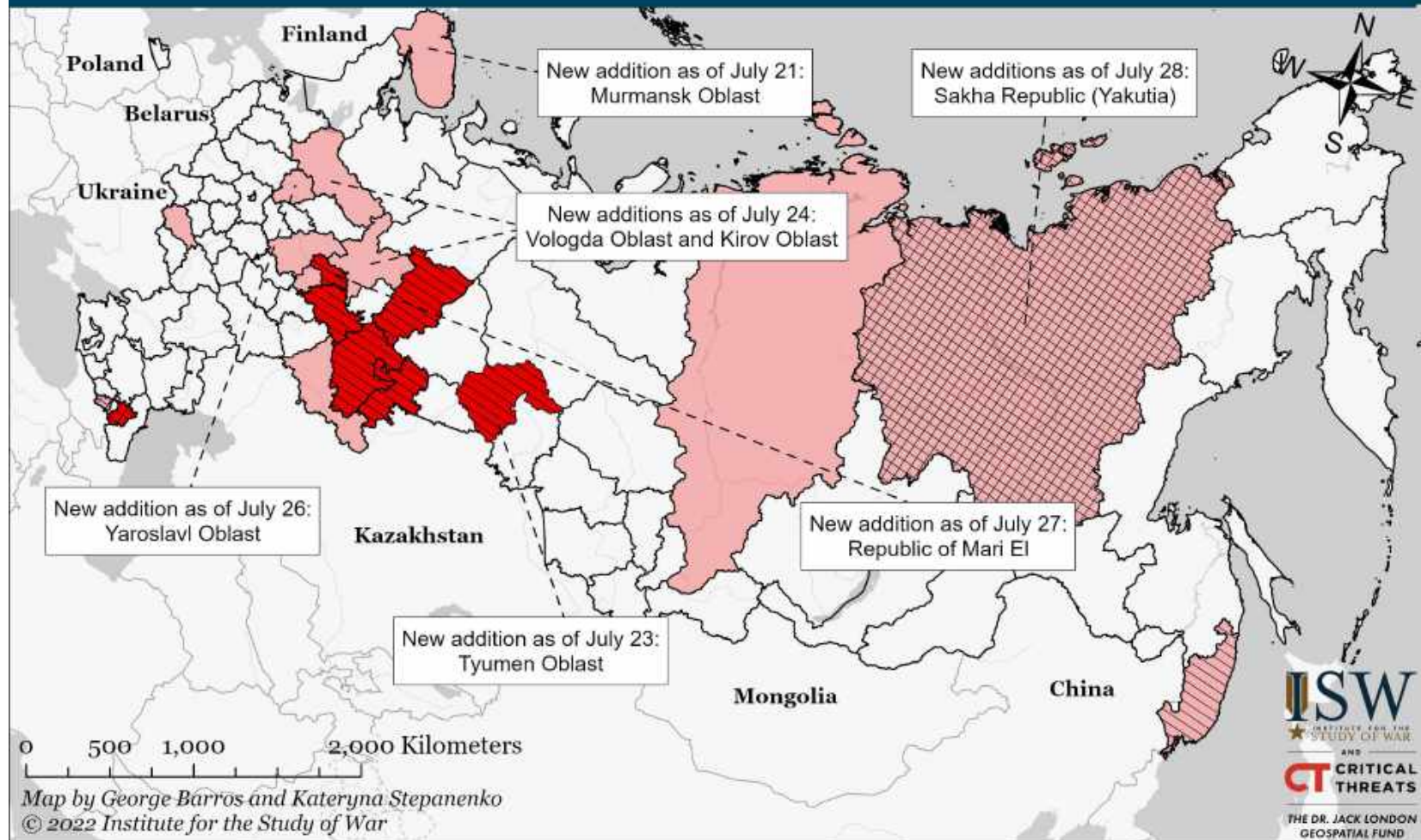


\* Assessed Russian advances are areas where ISW assesses Russian forces have operated in or launched attacks against but do not control.

Note: ISW expanded Ukrainian counteroffensives to Lozove on the left bank of the Inhulets River on July 5. The Ukrainian General Staff reported on July 6 that Ukrainian forces repelled a Russian offensive in the direction of Lozove in Kherson Oblast, indicating that Ukrainian forces still maintain a position there. Russian Telegram Channel Rybar claimed that Ukrainian forces launched unsuccessful attacks on the Snihurivka-Lozove-Bila Krynytsya line on July 4. Ukraine's Southern Operational Command stated on July 20 that Ukrainian forces repelled a Russian platoon counterattack in the Lozove area, indicating that Ukrainian forces are in Lozove. Russian Telegram channel Rybar confirmed that Ukrainian forces crossed the river and are in Lozove on July 22. The Ukrainian General Staff stated that Ukrainian forces defeated a Russian attack near Bilohirka on July 22, indicating Ukrainian forces also likely control Bilohirka. We will update our maps as we collect and confirm more information.



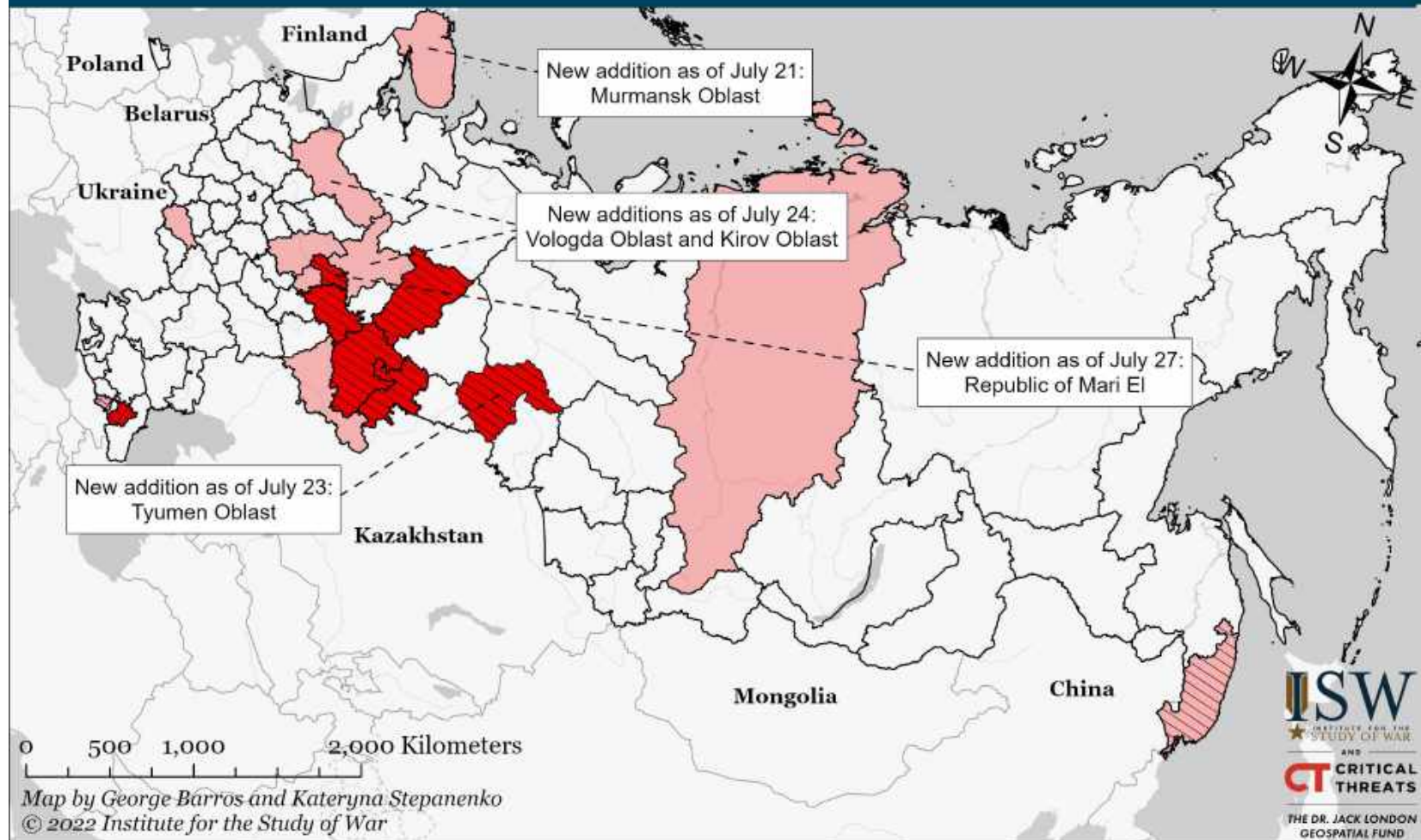
# Confirmed Russian Regions (Federal Subjects) Generating "Volunteer" Units to Fight in Ukraine as of July 28, 2022



- |   |  |
|---|--|
| <span style="display: inline-block; width: 15px; height: 10px; background-color: #f08080; border: 1px solid black;"></span> Federal Subject Contributing or Generating a Unit         | <span style="display: inline-block; width: 15px; height: 10px; background: repeating-linear-gradient(45deg, transparent, transparent 2px, black 2px, black 4px); border: 1px solid black;"></span> Unit Deployed to a Training Ground before Deployment to Ukraine |
| <span style="display: inline-block; width: 15px; height: 10px; background-color: #ff0000; border: 1px solid black;"></span> Federal Subject Contributing or Generating Multiple Units | <span style="display: inline-block; width: 15px; height: 10px; background: repeating-linear-gradient(-45deg, transparent, transparent 2px, black 2px, black 4px); border: 1px solid black;"></span> Unit Deployed to Ukraine                                       |



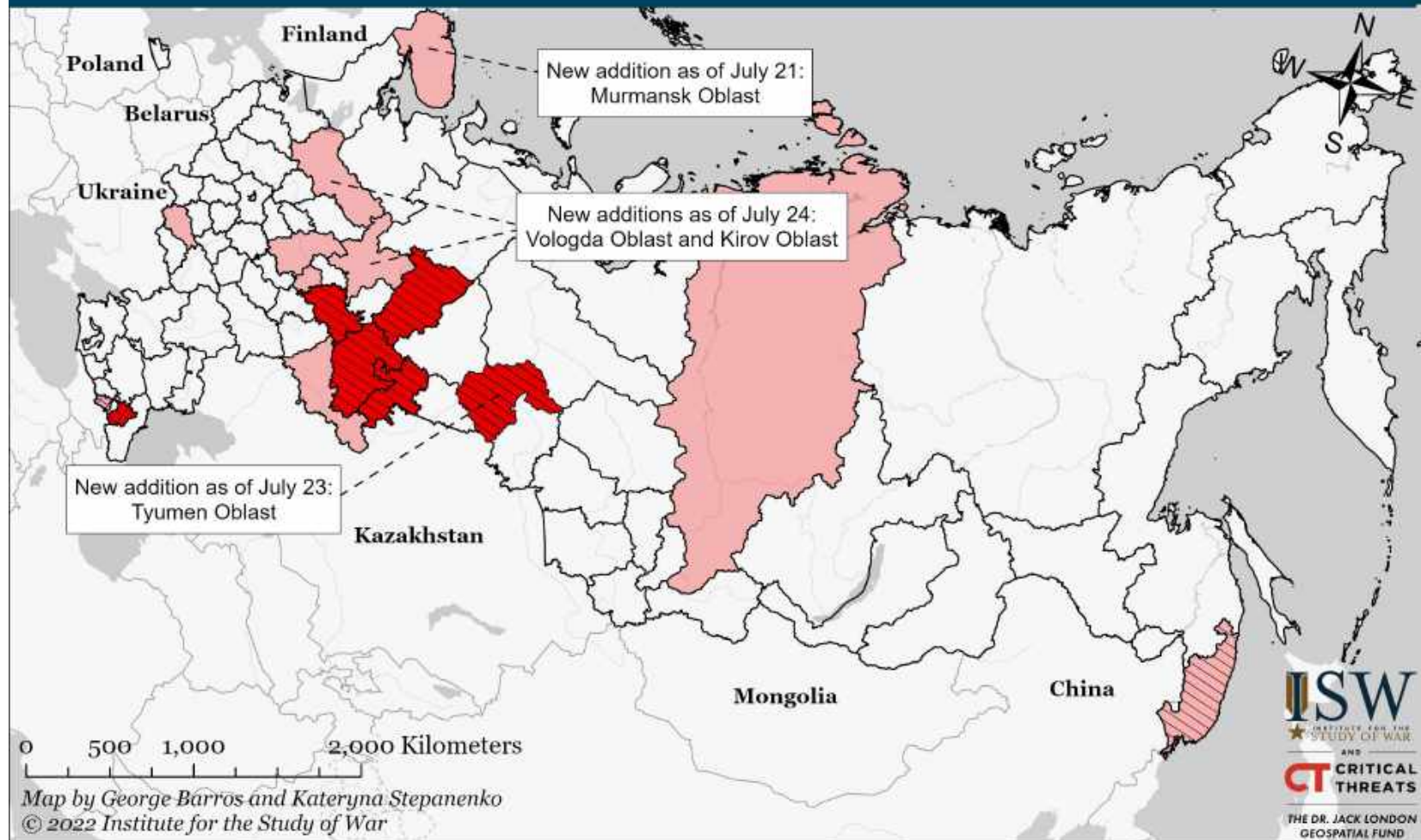
# Confirmed Russian Regions (Federal Subjects) Generating "Volunteer" Units to Fight in Ukraine as of July 27, 2022



- |   |   |
|---|---|
| Federal Subject Contributing or Generating a Unit         | Unit Deployed to a Training Ground before Deployment to Ukraine |
| Federal Subject Contributing or Generating Multiple Units | Unit Deployed to Ukraine  |



# Confirmed Russian Regions (Federal Subjects) Generating "Volunteer" Units to Fight in Ukraine as of July 24, 2022



- |   |   |
|---|---|
| Federal Subject Contributing or Generating a Unit         | Unit Deployed to a Training Ground before Deployment to Ukraine |
| Federal Subject Contributing or Generating Multiple Units | Unit Deployed to Ukraine  |