

### 8.2.10 Digital Reef (A TransPerfect Company)

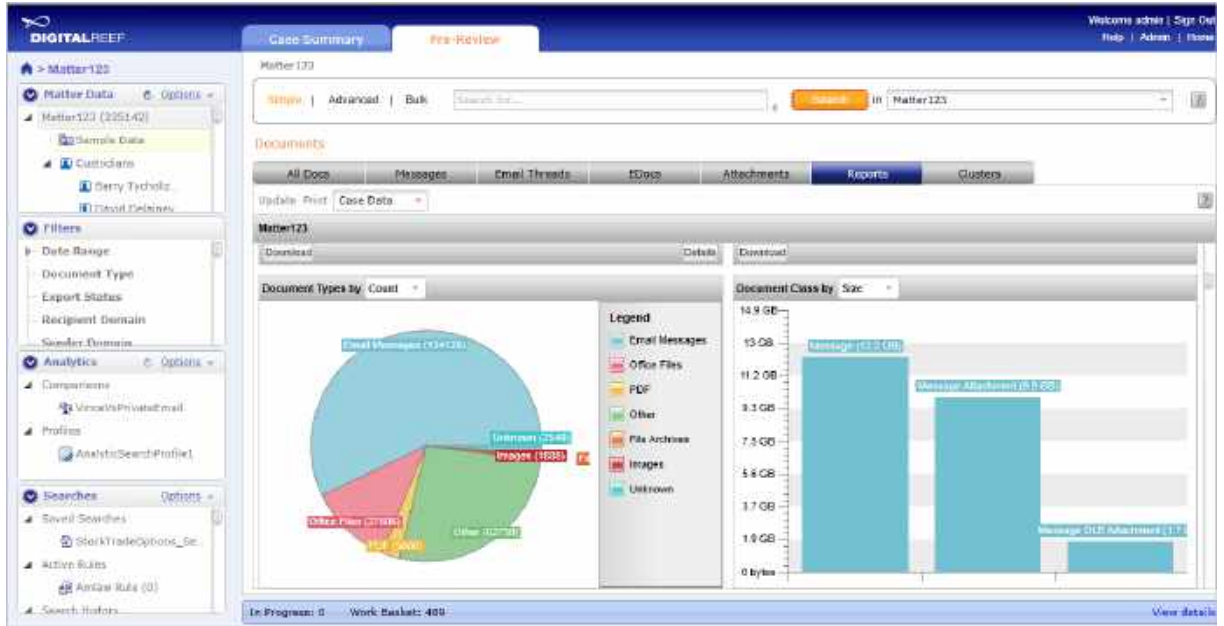
TransPerfect's Digital Reef is the only processing and ECA platform that has proven it can process 17 TB in a single day. The processing engine scales across available servers and processing cores to support any size case and is not limited to single server scalability like other tools. Nearly all data types are supported, including mail archives such as Microsoft PST and OST, and Lotus Notes NSF files. In addition, forensic containers such as E01 and L01 files are automatically mounted, deNISTed and processed, without requiring that they are first flattened by hand.

On top of this powerful processing engine, our clients enjoy an intuitive yet powerful ECA interface that allows datasets to be culled quickly and easily. Each client has full access to their case data for Boolean searching, reporting, tagging, and advanced similarity analytics. Analytics offers "find more like this" searching, clustering, and near-duplicate analysis which is included in the ingestion rate. Email Threading is provided using both email metadata and content, depending on the quality of the data. OCR is also built-in so that image-only TIFFs, PDFs, and low content PDFs can be automatically scanned for textual content.

Digital Reef processing and ECA key features:

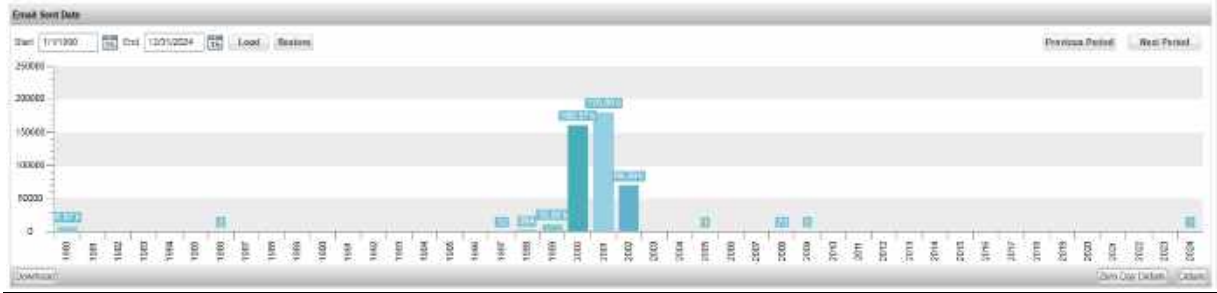
- Powerful multi-server grid architecture
- Processing tools for litigation support personnel
- Intuitive ECA interface for case team and attorneys
- Email threading viewable and exportable
- Clustering based on advanced similarity analytics
- De-duplication, de-NISTing and near-duplicate detection
- Multi-byte Unicode for support of all foreign languages
- All ECA work product (such as tagging) exportable to review
- Extensive reports, include search breakdowns and email histograms

Interface

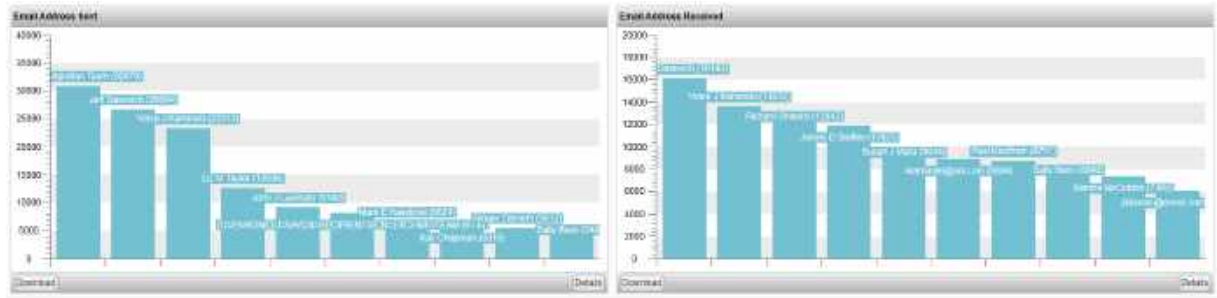


Example Reports

Email Volume Histograms: Email Sent Date and Email Received Date



Email Addresses for Sent and Received Email

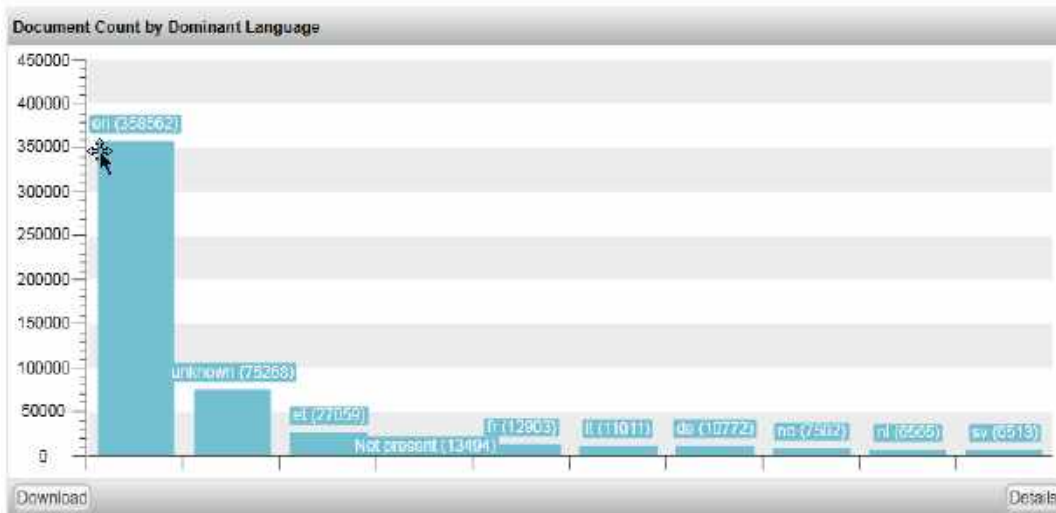


OCR Confidence Level Report

OCR confidence		
Name ^	Count	Size
0-10	948	48.6 MB
11-20	4	120 KB
21-30	16	923.4 KB
31-40	52	3.5 MB
41-50	43	13.1 MB
51-60	35	7.8 MB
61-70	95	20.3 MB
71-80	109	57.4 MB
81-90	440	48.8 MB
91-100	703	500.6 MB

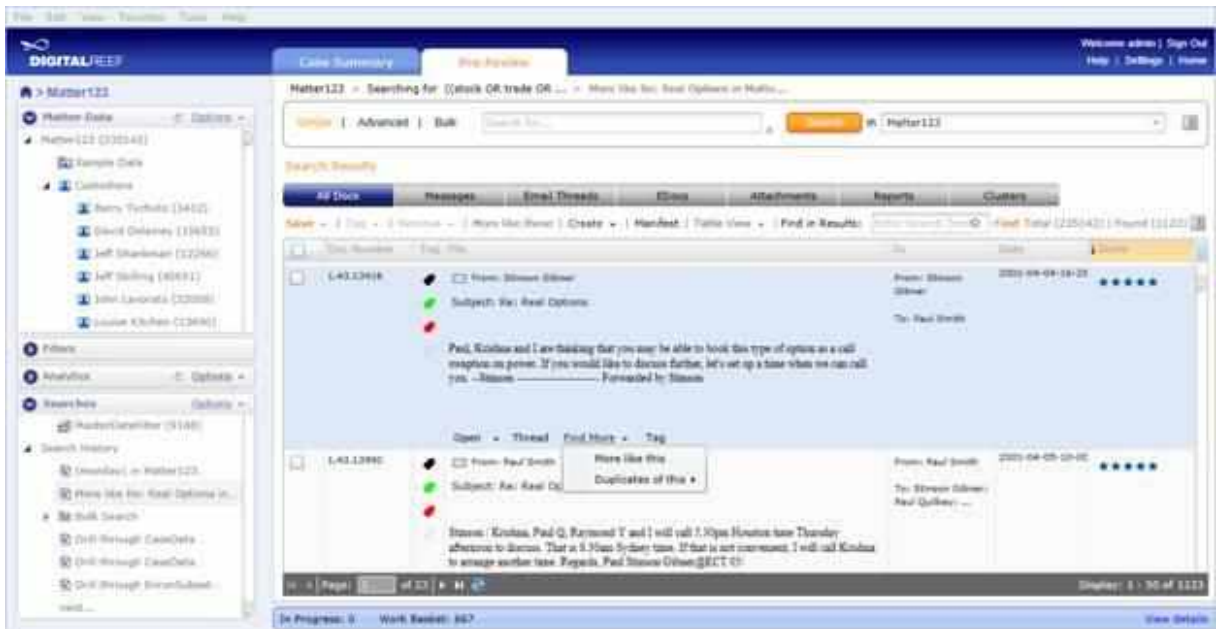
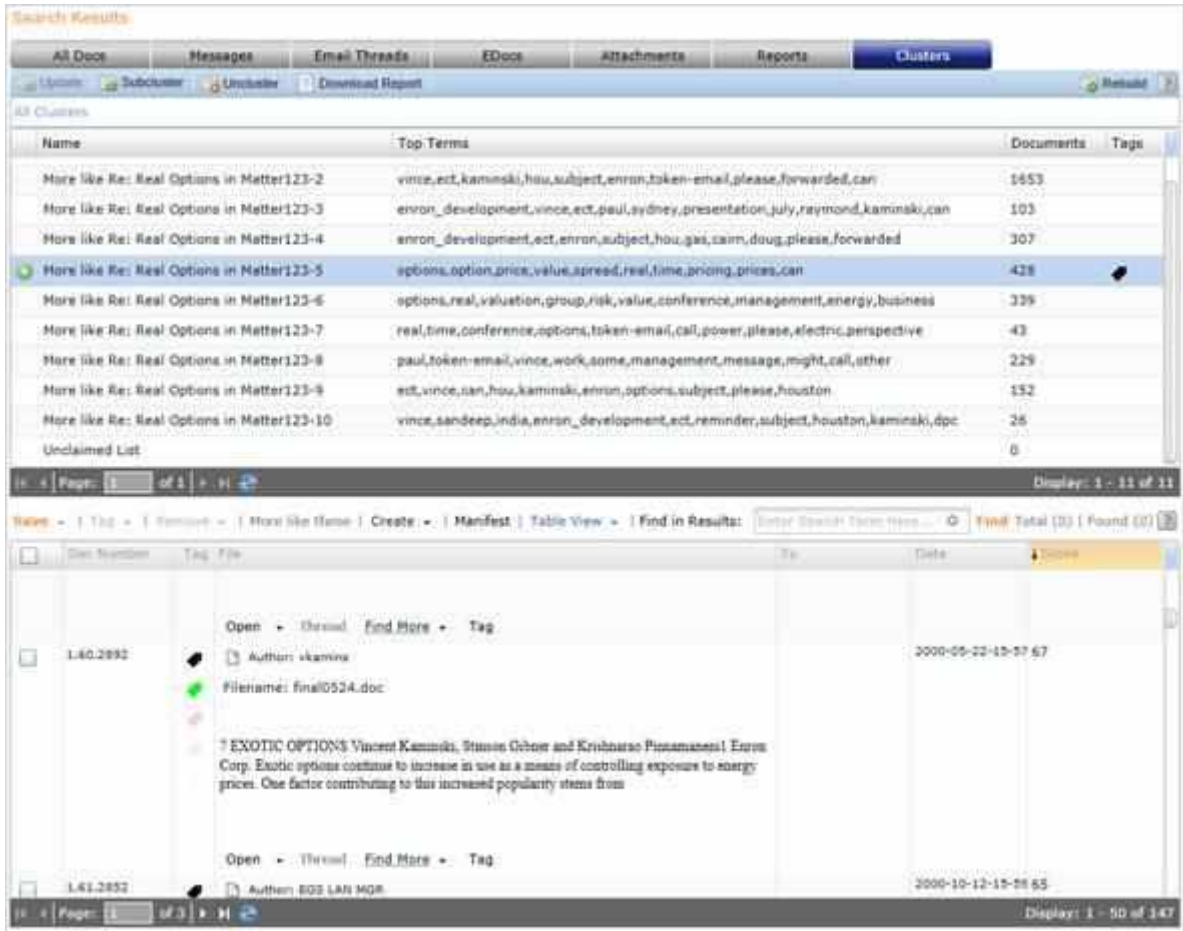
Download Details

Language Identification Report: Dominant Languages



## Chapter 8 – Supplier & Software Details

### Clustering and More Like This



Owned/Supplied by :	<b>TransPerfect Legal Solutions</b>
Used by :	<b>FRA, TransPerfect Legal Solutions</b>