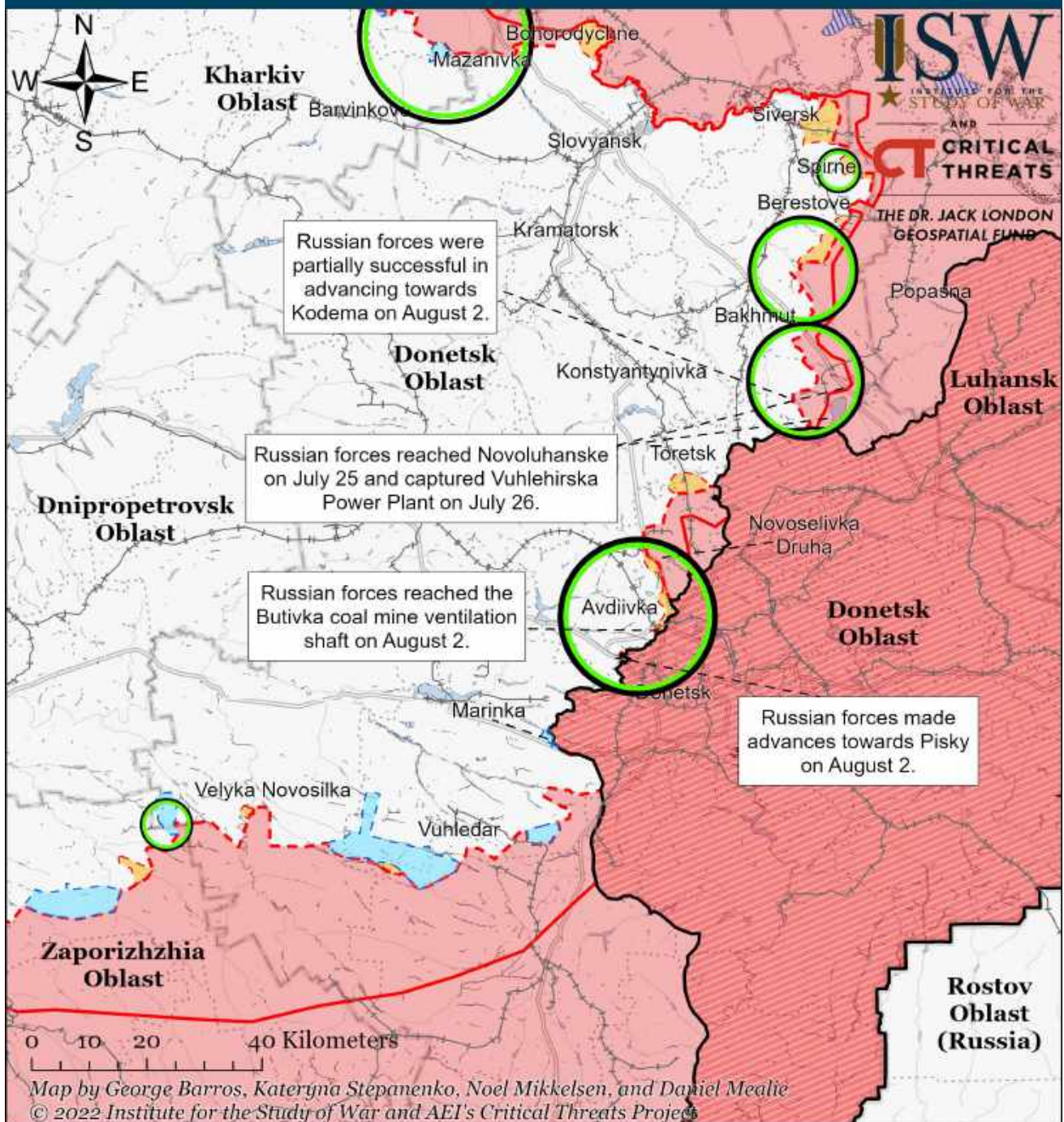


# Assessed Control of Terrain Around Donetsk as of August 2, 2022, 3:00 PM ET



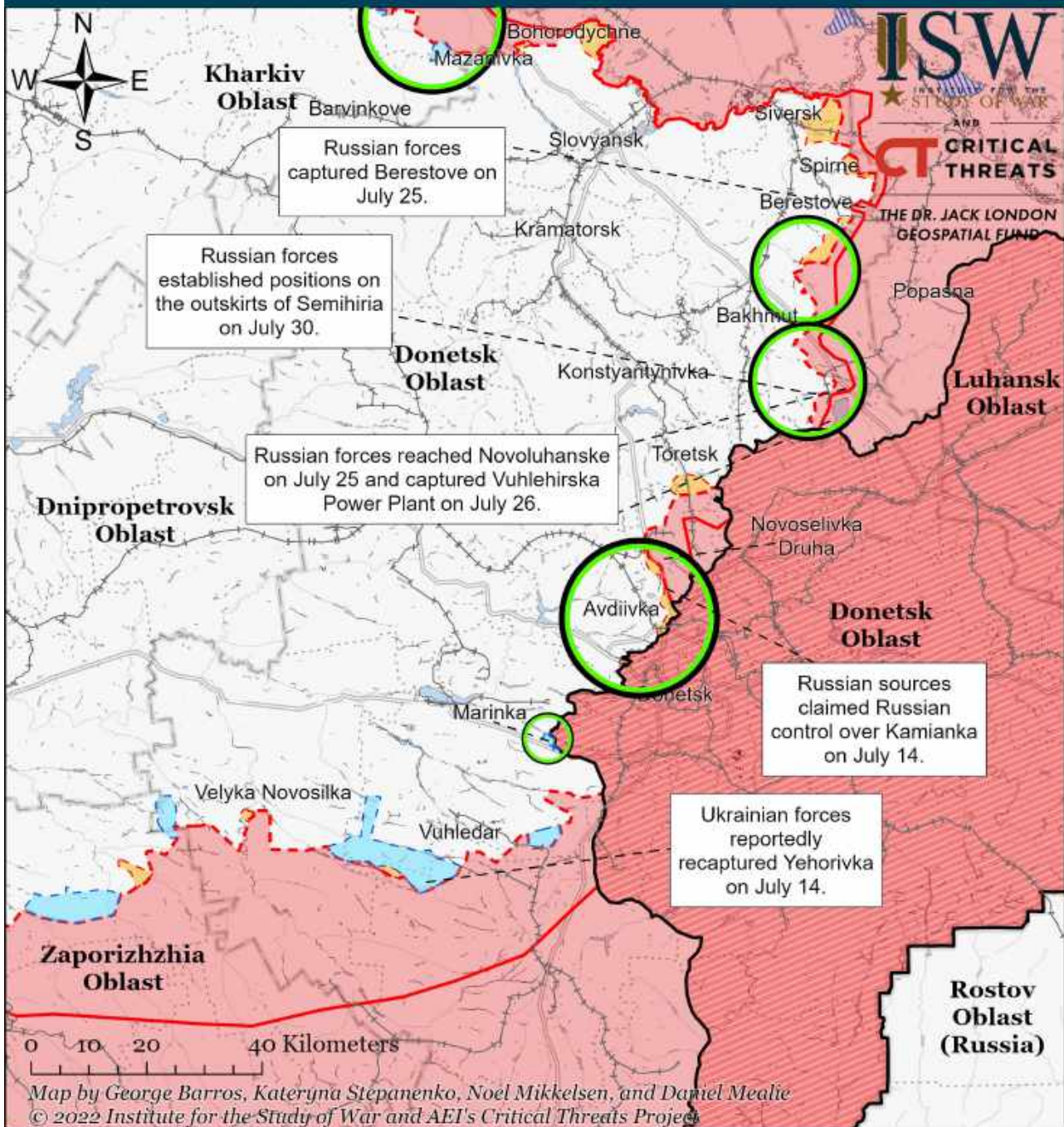
- Significant Fighting in the past 24 Hours
- Assessed Russian-controlled Ukrainian Territory
- Reported Ukrainian Partisan Warfare
- Russian-controlled Ukrainian Territory before February 24
- Claimed Russian Control over Ukrainian Territory
- Major Railroads
- Assessed Russian Advances in Ukraine\*
- Claimed Ukrainian Counteroffensives

\* Assessed Russian advances are areas where ISW assesses Russian forces have operated in or launched attacks against but do not control.

Note: We expanded Russian assessed advances to the eastern outskirts of Kodema, Donetsk Oblast, given that the Ukrainian General Staff reported that Russian forces had a partially successful offensive operation in the direction of Vidrozhennya-Kodema on August 2. The Ukrainian General Staff has previously reported that Russian forces were partially successful in their advances on Semihirya (just southeast of Kodema) on July 30, and it is likely that Russian forces advanced through the settlement towards Kodema. The Ukrainian Joint Forces Operation reported on July 29 that Ukrainian forces liberated an unnamed village in the Donetsk Oblast direction. ISW will update our maps when open sources name the liberated settlement.



# Assessed Control of Terrain Around Donetsk as of August 1, 2022, 3:00 PM ET



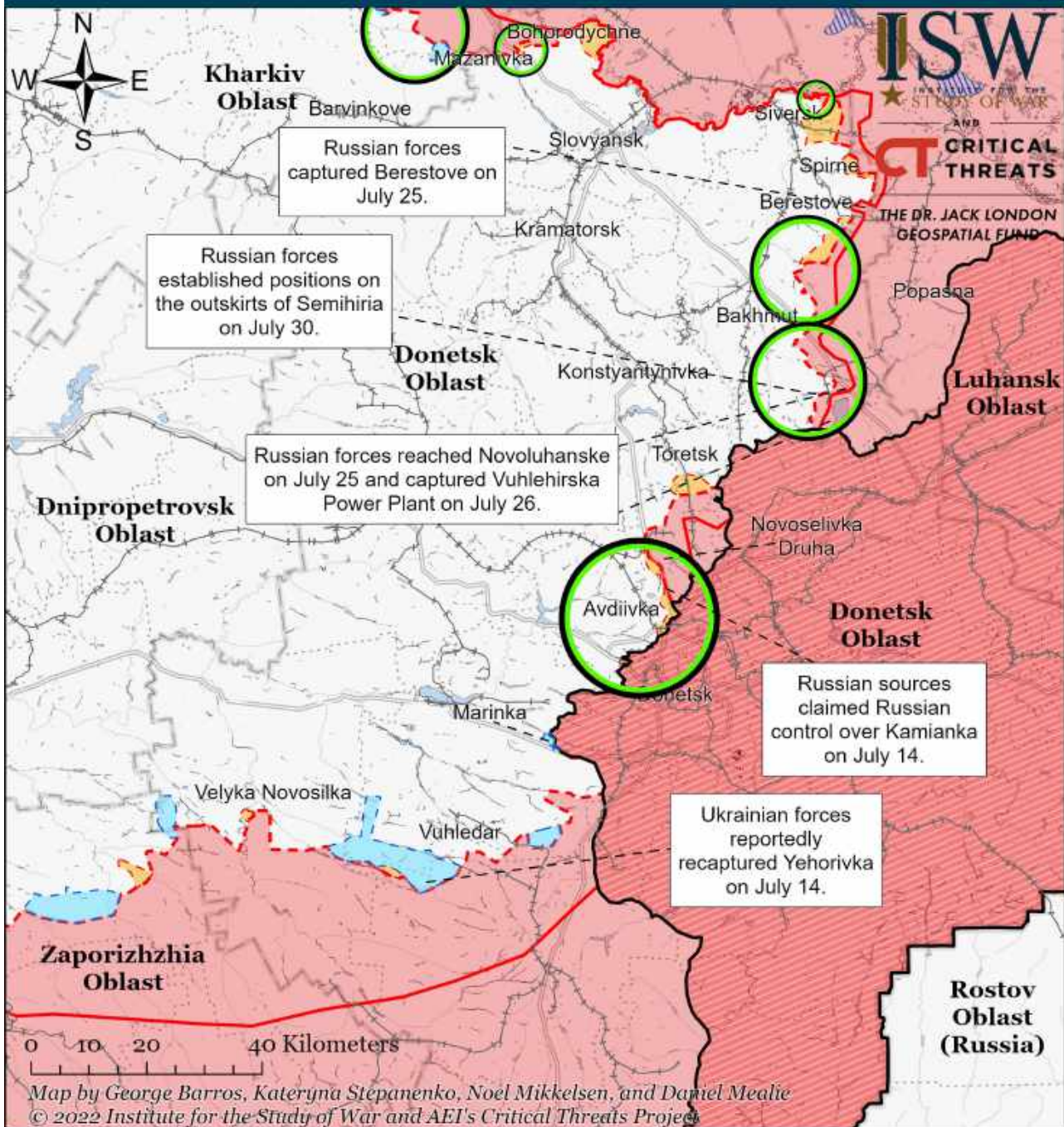
- Significant Fighting in the past 24 Hours
- Russian-controlled Ukrainian Territory
- Reported Ukrainian Partisan Warfare
- Russian-controlled Ukrainian Territory before February 24
- Claimed Russian Control over Ukrainian Territory
- Major Railroads
- Assessed Russian Advances in Ukraine\*
- Claimed Ukrainian Counteroffensives

\* Assessed Russian advances are areas where ISW assesses Russian forces have operated in or launched attacks against but do not control.

Note: The Ukrainian Joint Forces Operation reported on July 29 that Ukrainian forces liberated an unnamed village in the Donetsk Oblast direction. ISW will update our maps when open sources name the liberated settlement. The Ukrainian General Staff reported that Russian forces established positions on the outskirts of Semihiria on July 30. We reassessed assessed Russian advances south of Izyum heading towards Barvinkove to Brazhivka given that we have not seen Russian ground forces in this area since April and that the Ukrainian General Staff reported on July 28 that Ukrainian forces defeated a Russian reconnaissance-in-force attempt near Brazhivka. ISW expanded Russian controlled Ukrainian territory in Bohorodychne based on a geolocated video of Ukrainian artillery striking a Russian ammunition warehouse in the settlement on July 25.



# Assessed Control of Terrain Around Donetsk as of July 31, 2022, 3:00 PM ET



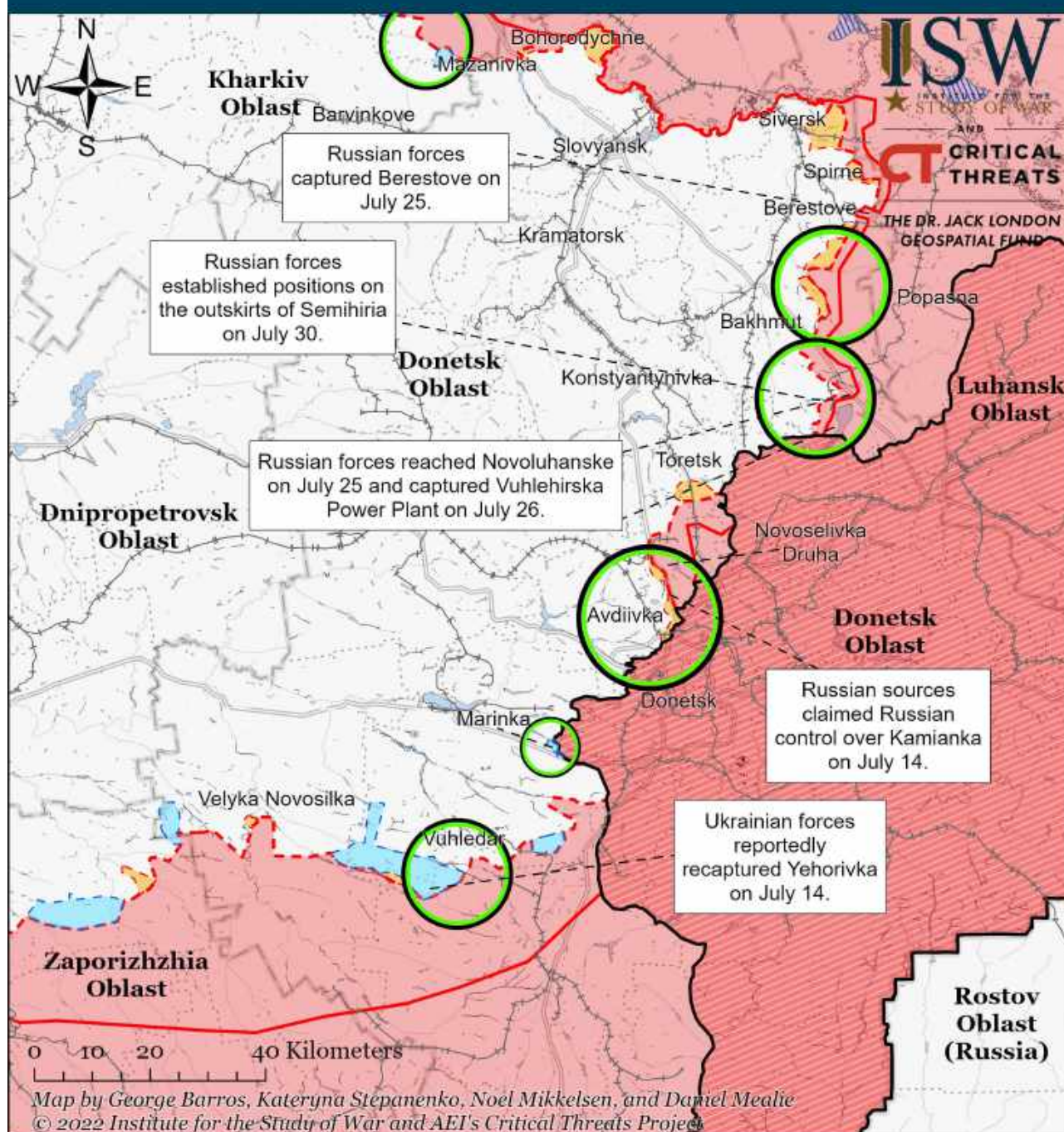
- Significant Fighting in the past 24 Hours
- Russian-controlled Ukrainian Territory
- Reported Ukrainian Partisan Warfare
- Russian-controlled Ukrainian Territory before February 24
- Claimed Russian Control over Ukrainian Territory
- Major Railroads
- Assessed Russian Advances in Ukraine\*
- Claimed Ukrainian Counteroffensives

\* Assessed Russian advances are areas where ISW assesses Russian forces have operated in or launched attacks against but do not control.

Note: The Ukrainian Joint Forces Operation reported on July 29 that Ukrainian forces liberated an unnamed village in the Donetsk Oblast direction. ISW will update our maps when open sources name the liberated settlement. The Ukrainian General Staff reported that Russian forces established positions on the outskirts of Semihiria on July 30. We reassessed assessed Russian advances south of Izyum heading towards Barvinkove to Brazhivka given that we have not seen Russian ground forces in this area since April and that the Ukrainian General Staff reported on July 28 that Ukrainian forces defeated a Russian reconnaissance-in-force attempt near Brazhivka. ISW expanded Russian controlled Ukrainian territory in Bohorodychne based on a geolocated video of Ukrainian artillery striking a Russian ammunition warehouse in the settlement on July 25.



# Assessed Control of Terrain Around Donetsk as of July 30, 2022, 3:00 PM ET



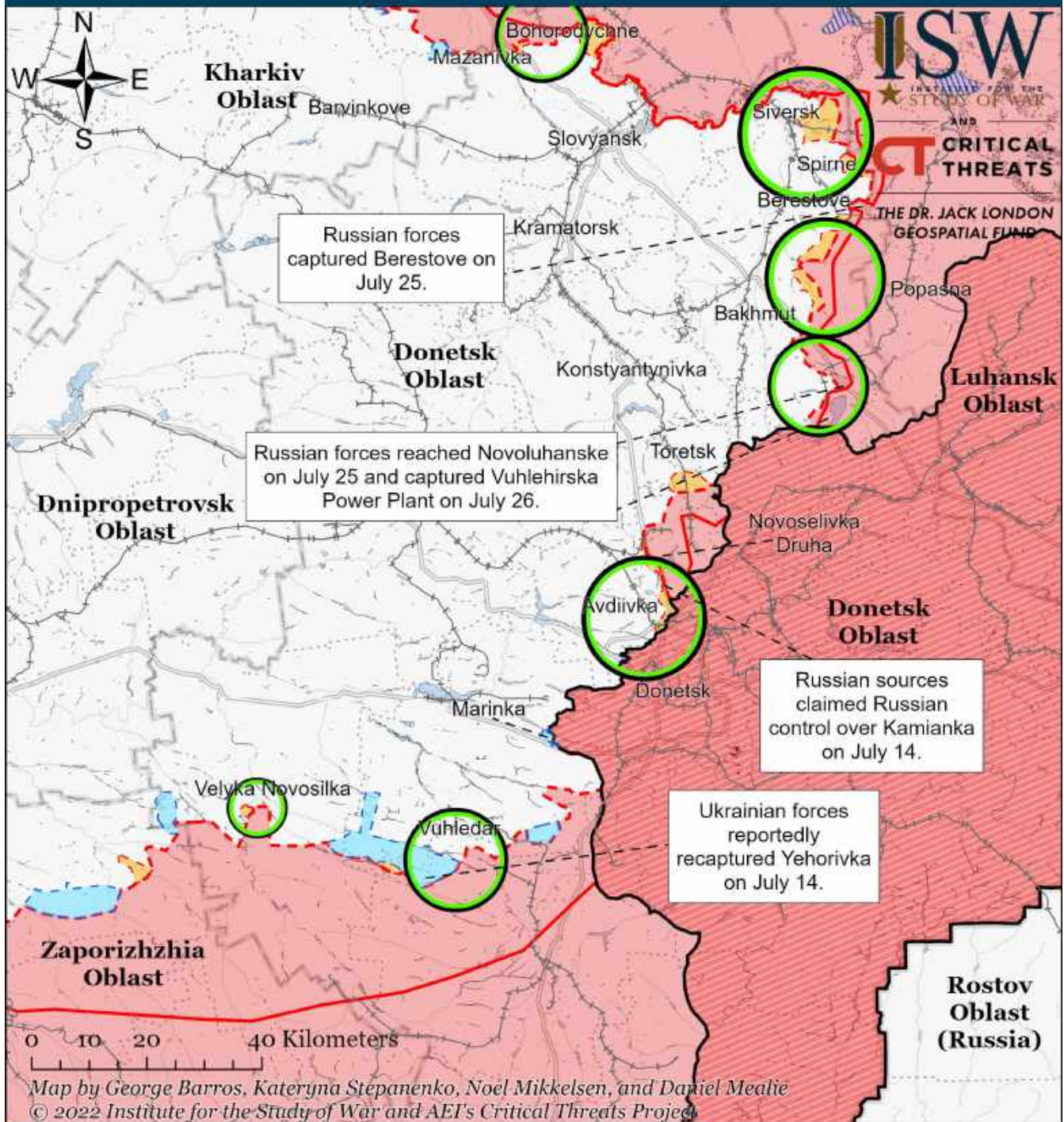
- Significant Fighting in the past 24 Hours
- Assessed Russian-controlled Ukrainian Territory
- Reported Ukrainian Partisan Warfare
- Russian-controlled Ukrainian Territory before February 24
- Claimed Russian Control over Ukrainian Territory
- Major Railroads
- Assessed Russian Advances in Ukraine\*
- Claimed Ukrainian Counteroffensives

\* Assessed Russian advances are areas where ISW assesses Russian forces have operated in or launched attacks against but do not control.

Note: The Ukrainian Joint Forces Operation reported on July 29 that Ukrainian forces liberated an unnamed village in the Donetsk Oblast direction. ISW will update our maps when open sources name the liberated settlement. The Ukrainian General Staff reported that Russian forces established positions on the outskirts of Semihiria on July 30. We reassessed assessed Russian advances south of Izyum heading towards Barvinkove to Brazhivka given that we have not seen Russian ground forces in this area since April and that the Ukrainian General Staff reported on July 28 that Ukrainian forces defeated a Russian reconnaissance-in-force attempt near Brazhivka. ISW expanded Russian controlled Ukrainian territory in Bohorodychne based on a geolocated video of Ukrainian artillery striking a Russian ammunition warehouse in the settlement on July 25.



# Assessed Control of Terrain Around Donetsk as of July 29, 2022, 3:00 PM ET



- Significant Fighting in the past 24 Hours
- Assessed Russian-controlled Ukrainian Territory
- Reported Ukrainian Partisan Warfare
- Russian-controlled Ukrainian Territory before February 24
- Claimed Russian Control over Ukrainian Territory
- Assessed Russian Advances in Ukraine\*
- Claimed Ukrainian Counteroffensives
- Major Railroads

\* Assessed Russian advances are areas where ISW assesses Russian forces have operated in or launched attacks against but do not control.

Note: ISW expanded Russian controlled Ukrainian territory in Bohorodychne based on a geolocated video of Ukrainian artillery striking a Russian ammunition warehouse in the settlement on July 25. We recessed assessed Russian advances south of Izyum heading towards Barvinkove to Brazhkyivka given that we have not seen Russian ground forces in this area since April and that the Ukrainian General Staff reported on July 28 that Ukrainian forces defeated a Russian reconnaissance-in-force attempt near Brazhkyivka.



# Assessed Control of Terrain in Ukraine and Main Russian Maneuver Axes as of August 2, 2022, 3:00 PM ET



Map by George Barros, Kateryna Stepanenko, Noel Mikkelsen, and Daniel Mealie  
© 2022 Institute for the Study of War and AEI's Critical Threats Project

\* Assessed Russian advances are areas where ISW assesses Russian forces have operated in or launched attacks against but do not control.

# Assessed Control of Terrain in Ukraine and Main Russian Maneuver Axes as of August 1, 2022, 3:00 PM ET



Map by George Barros, Kateryna Stepanenko, Noel Mikkelsen, and Daniel Mealie  
© 2022 Institute for the Study of War and AEI's Critical Threats Project

\* Assessed Russian advances are areas where ISW assesses Russian forces have operated in or launched attacks against but do not control.



# Assessed Control of Terrain in Ukraine and Main Russian Maneuver Axes as of July 31, 2022, 3:00 PM ET



Map by George Barros, Kateryna Stepanenko, Noel Mikkelsen, and Daniel Mealie  
© 2022 Institute for the Study of War and AEI's Critical Threats Project

\* Assessed Russian advances are areas where ISW assesses Russian forces have operated in or launched attacks against but do not control.



# Assessed Control of Terrain in Ukraine and Main Russian Maneuver Axes as of July 30, 2022, 3:00 PM ET



Map by George Barros, Kateryna Stepanenko, Noel Mikkelsen, and Daniel Mealie  
© 2022 Institute for the Study of War and AEI's Critical Threats Project

\* Assessed Russian advances are areas where ISW assesses Russian forces have operated in or launched attacks against but do not control.



# Assessed Control of Terrain in Ukraine and Main Russian Maneuver Axes as of July 29, 2022, 3:00 PM ET

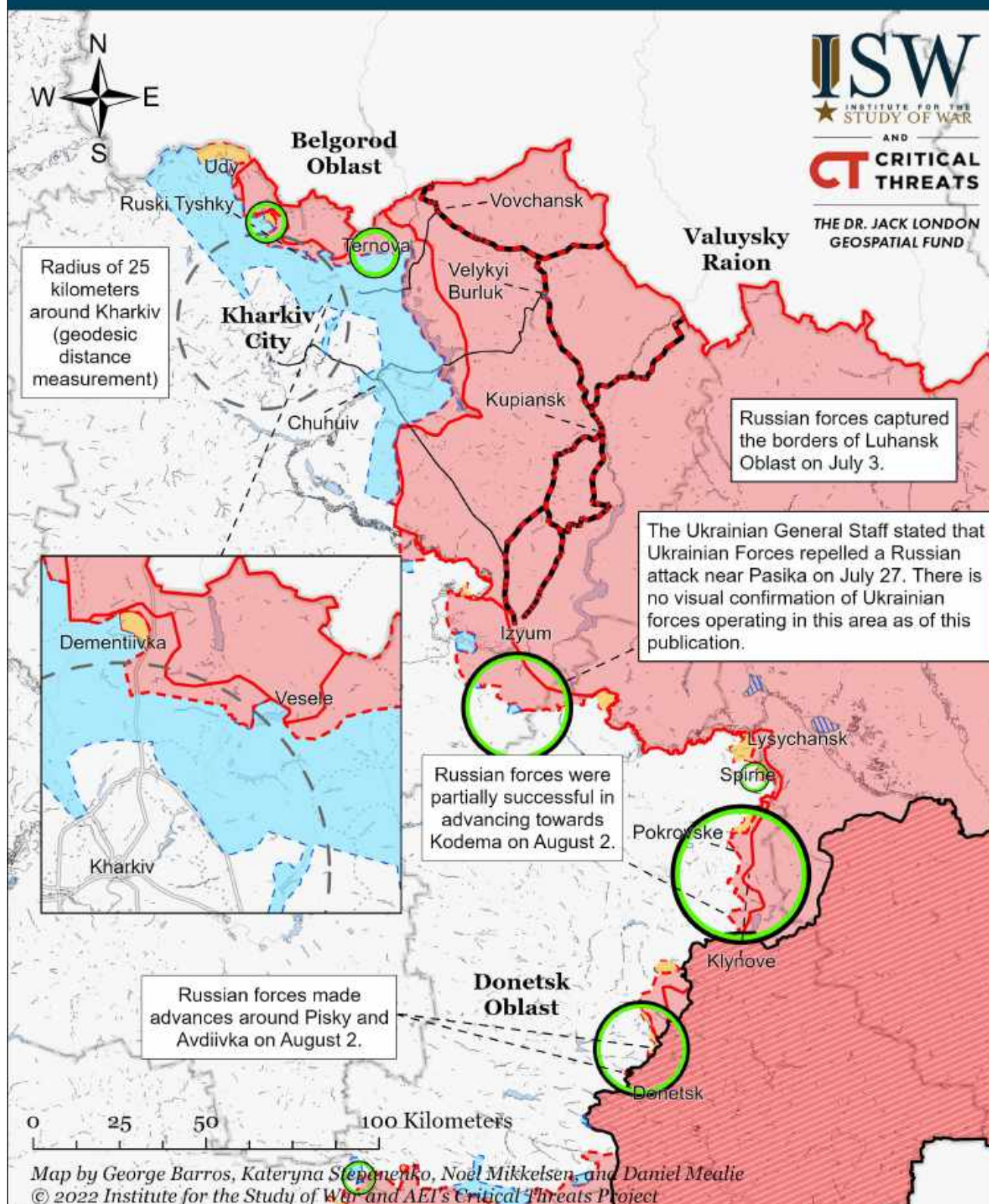


Map by George Barros, Kateryna Stepanenko, Noel Mikkelsen, and Daniel Mealie  
© 2022 Institute for the Study of War and AEI's Critical Threats Project

\* Assessed Russian advances are areas where ISW assesses Russian forces have operated in or launched attacks against but do not control.



# Assessed Control of Terrain Around Kharkiv as of August 2, 2022, 3:00 PM ET



○ Significant Fighting in the past 24 Hours

— Key Ukrainian Roads

— Russian Ground Lines of Communication

■ Russian-controlled Ukrainian Territory before February 24

■ Assessed Russian Advances in Ukraine\*

■ Assessed Russian-controlled Ukrainian Territory

■ Claimed Russian Control over Ukrainian Territory

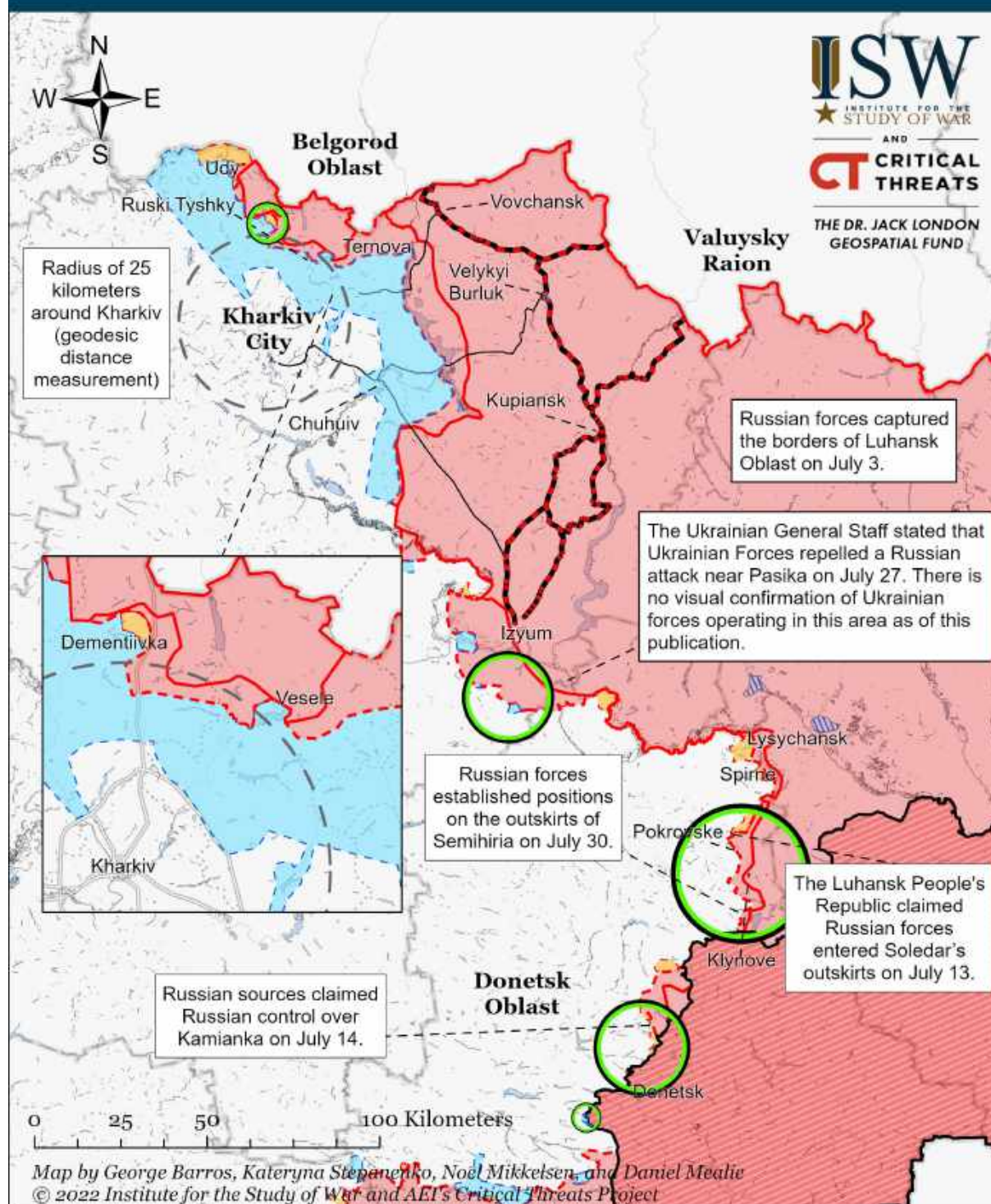
■ Claimed Ukrainian Counteroffensives

■ Reported Ukrainian Partisan Warfare

\* Assessed Russian advances are areas where ISW assesses Russian forces have operated in or launched attacks against but do not control.



# Assessed Control of Terrain Around Kharkiv as of August 1, 2022, 3:00 PM ET



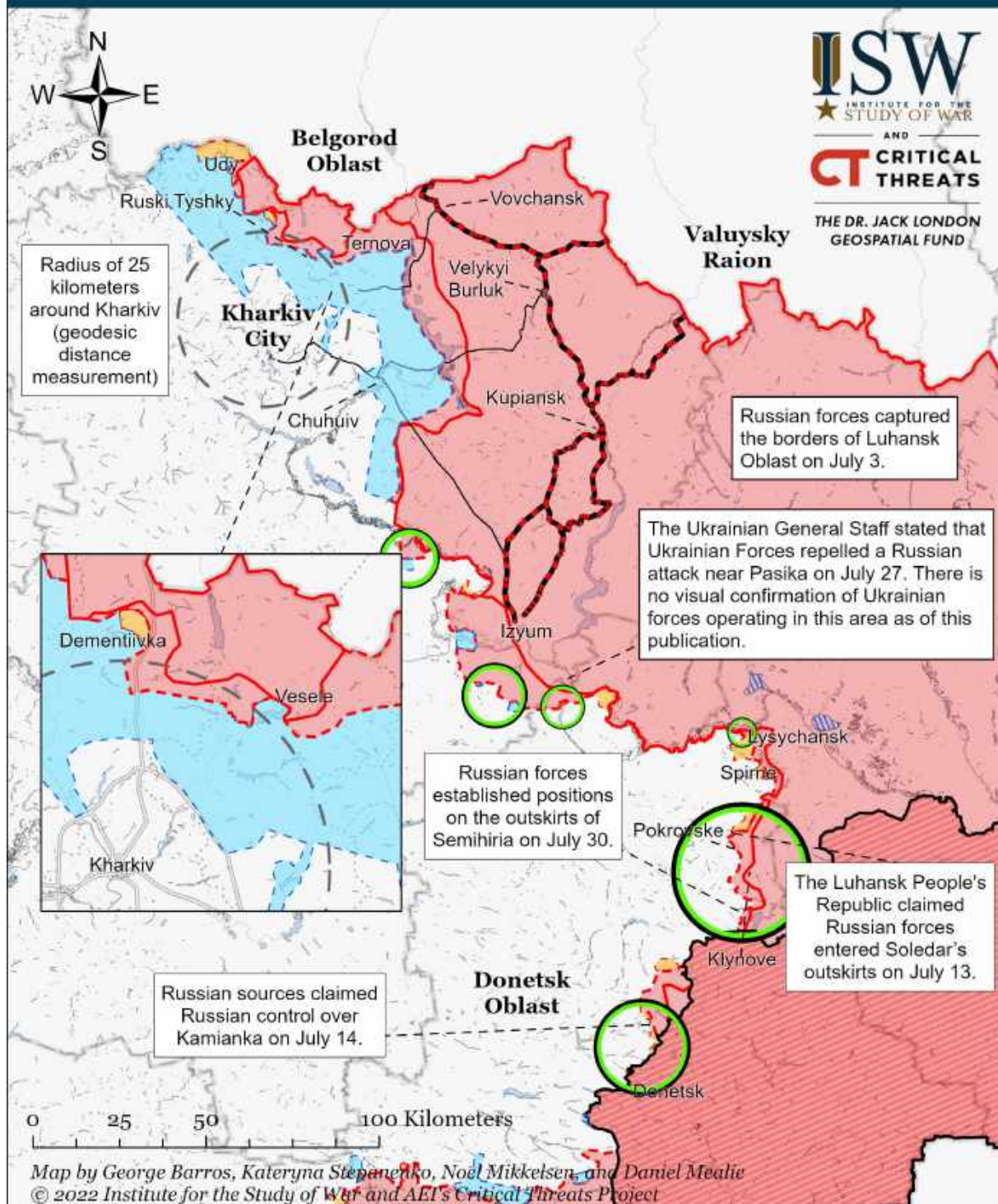
- |   |   |  |
|---|---|--|
| Significant Fighting in the past 24 Hours | Russian-controlled Ukrainian Territory before February 24 | Claimed Russian Control over Ukrainian Territory |
| Key Ukrainian Roads                       | Assessed Russian Advances in Ukraine*                     | Claimed Ukrainian Counteroffensives              |
| Russian Ground Lines of Communication     | Assessed Russian-controlled Ukrainian Territory           | Reported Ukrainian Partisan Warfare              |

\* Assessed Russian advances are areas where ISW assesses Russian forces have operated in or launched attacks against but do not control.

Note: The Ukrainian General Staff reported that Russian forces established positions on the outskirts of Semihiria on July 30. We recessed assessed Russian advances south of Izyum heading towards Barvinkove to Brazhkiivka given that we have not seen Russian ground forces in this area since April and that the Ukrainian General Staff reported on July 28 that Ukrainian forces defeated a Russian reconnaissance-in-force attempt near Brazhkiivka. ISW expanded Russian controlled Ukrainian territory in Bohorodychne based on a geolocated video of Ukrainian artillery striking a Russian ammunition warehouse in the settlement on July 25.



# Assessed Control of Terrain Around Kharkiv as of July 31, 2022, 3:00 PM ET



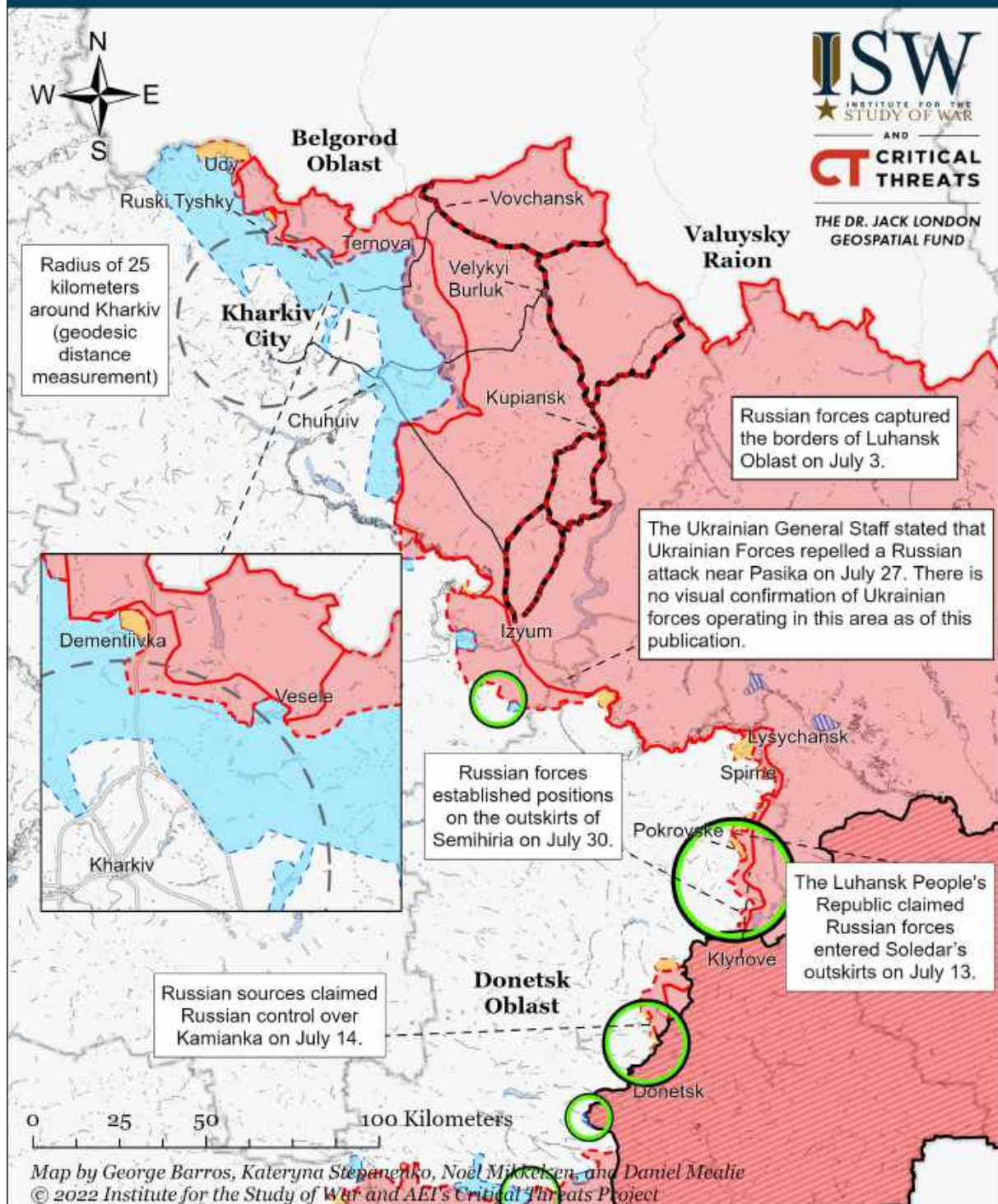
- |  |  |  |
|--|--|--|
| <span style="color: green;">○</span> Significant Fighting in the past 24 Hours | <span style="border: 1px solid red; padding: 2px;"> </span> Russian-controlled Ukrainian Territory before February 24                | <span style="background-color: orange; border: 1px solid black; padding: 2px;"> </span> Claimed Russian Control over Ukrainian Territory |
| — Key Ukrainian Roads  | <span style="color: red;">—</span> Assessed Russian Advances in Ukraine*   | <span style="background-color: lightblue; border: 1px solid black; padding: 2px;"> </span> Claimed Ukrainian Counteroffensives           |
| <span style="color: red;">—</span> Russian Ground Lines of Communication       | <span style="background-color: red; border: 1px solid black; padding: 2px;"> </span> Assessed Russian-controlled Ukrainian Territory | <span style="background-color: lightblue; border: 1px solid black; padding: 2px;"> </span> Reported Ukrainian Partisan Warfare           |

\* Assessed Russian advances are areas where ISW assesses Russian forces have operated in or launched attacks against but do not control.

Note: The Ukrainian General Staff reported that Russian forces established positions on the outskirts of Semihiria on July 30. We recessed assessed Russian advances south of Izyum heading towards Barvinkove to Brazhivka given that we have not seen Russian ground forces in this area since April and that the Ukrainian General Staff reported on July 28 that Ukrainian forces defeated a Russian reconnaissance-in-force attempt near Brazhivka. ISW expanded Russian controlled Ukrainian territory in Bohorodychne based on a geolocated video of Ukrainian artillery striking a Russian ammunition warehouse in the settlement on July 25.



# Assessed Control of Terrain Around Kharkiv as of July 30, 2022, 3:00 PM ET



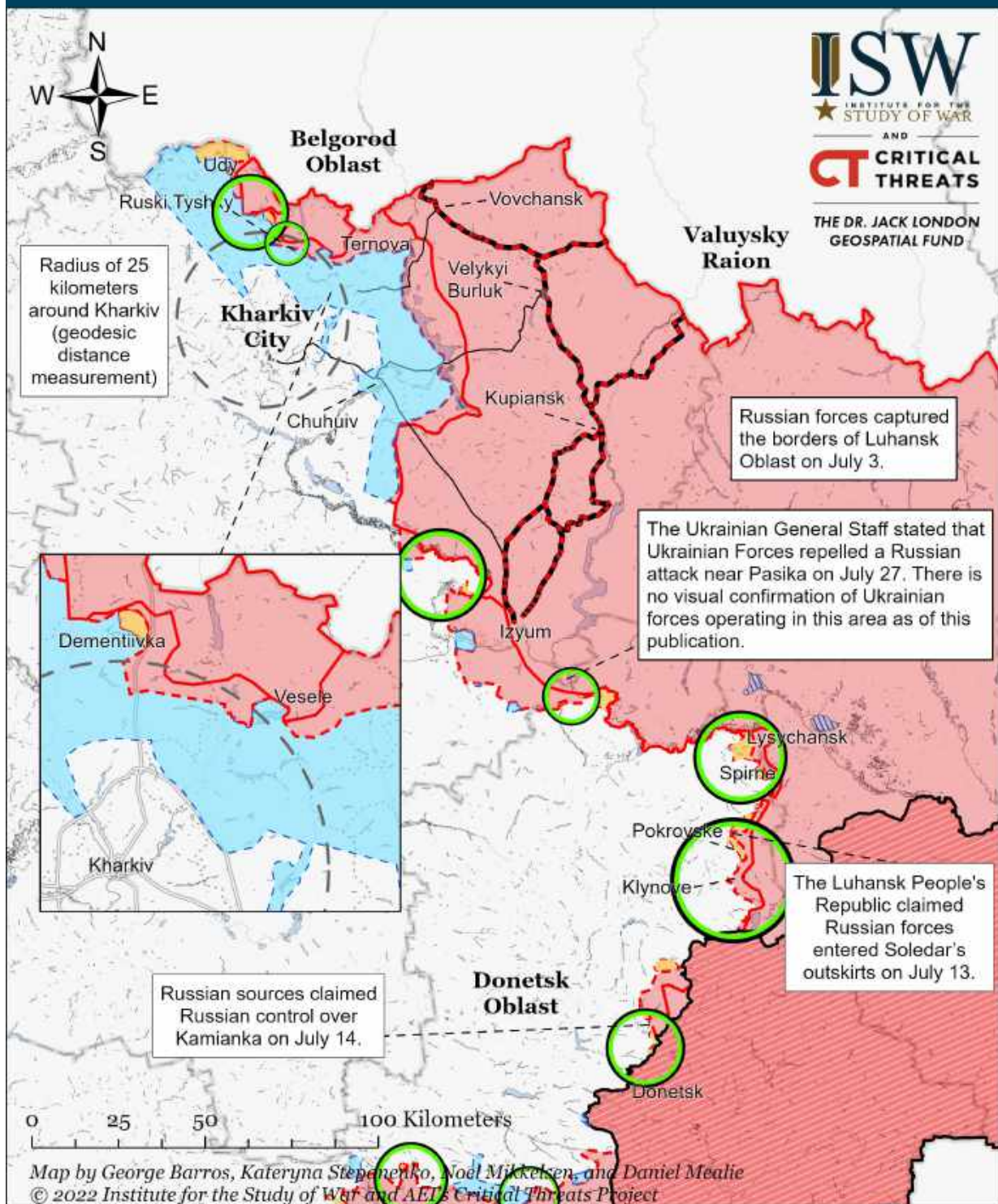
- |   |   |  |
|---|---|--|
| Significant Fighting in the past 24 Hours | Russian-controlled Ukrainian Territory before February 24 | Claimed Russian Control over Ukrainian Territory |
| Key Ukrainian Roads                       | Assessed Russian Advances in Ukraine*                     | Claimed Ukrainian Counteroffensives              |
| Russian Ground Lines of Communication     | Assessed Russian-controlled Ukrainian Territory           | Reported Ukrainian Partisan Warfare              |

\* Assessed Russian advances are areas where ISW assesses Russian forces have operated in or launched attacks against but do not control.

Note: The Ukrainian General Staff reported that Russian forces established positions on the outskirts of Semihiria on July 30. We recessed assessed Russian advances south of Izyum heading towards Barvinkove to Brazhivka given that we have not seen Russian ground forces in this area since April and that the Ukrainian General Staff reported on July 28 that Ukrainian forces defeated a Russian reconnaissance-in-force attempt near Brazhivka. ISW expanded Russian controlled Ukrainian territory in Bohorodychne based on a geolocated video of Ukrainian artillery striking a Russian ammunition warehouse in the settlement on July 25.



# Assessed Control of Terrain Around Kharkiv as of July 29, 2022, 3:00 PM ET



Significant Fighting in the past 24 Hours

Key Ukrainian Roads

Russian Ground Lines of Communication

Russian-controlled Ukrainian Territory before February 24

Assessed Russian Advances in Ukraine\*

Assessed Russian-controlled Ukrainian Territory

Claimed Russian Control over Ukrainian Territory

Claimed Ukrainian Counteroffensives

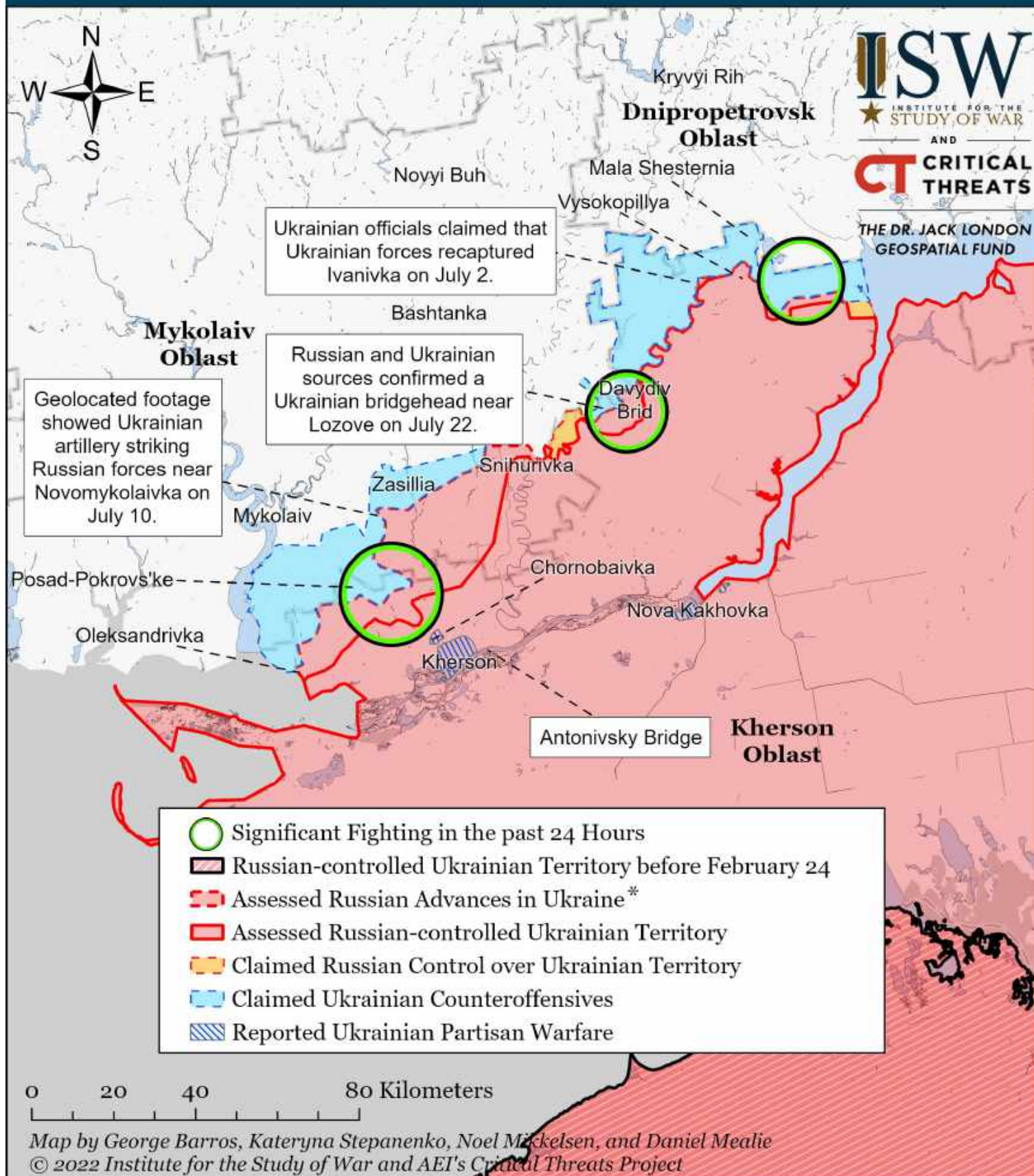
Reported Ukrainian Partisan Warfare

\* Assessed Russian advances are areas where ISW assesses Russian forces have operated in or launched attacks against but do not control.

Note: ISW expanded Russian controlled Ukrainian territory in Bohorodychne based on a geolocated video of Ukrainian artillery striking a Russian ammunition warehouse in the settlement on July 25. We recessed assessed Russian advances south of Izyum heading towards Barvinkove to Brazhivka given that we have not seen Russian ground forces in this area since April and that the Ukrainian General Staff reported on July 28 that Ukrainian forces defeated a Russian reconnaissance-in-force attempt near Brazhivka.



# Assessed Control of Terrain Around Kherson and Mykolaiv as of August 2, 2022, 3:00 PM ET

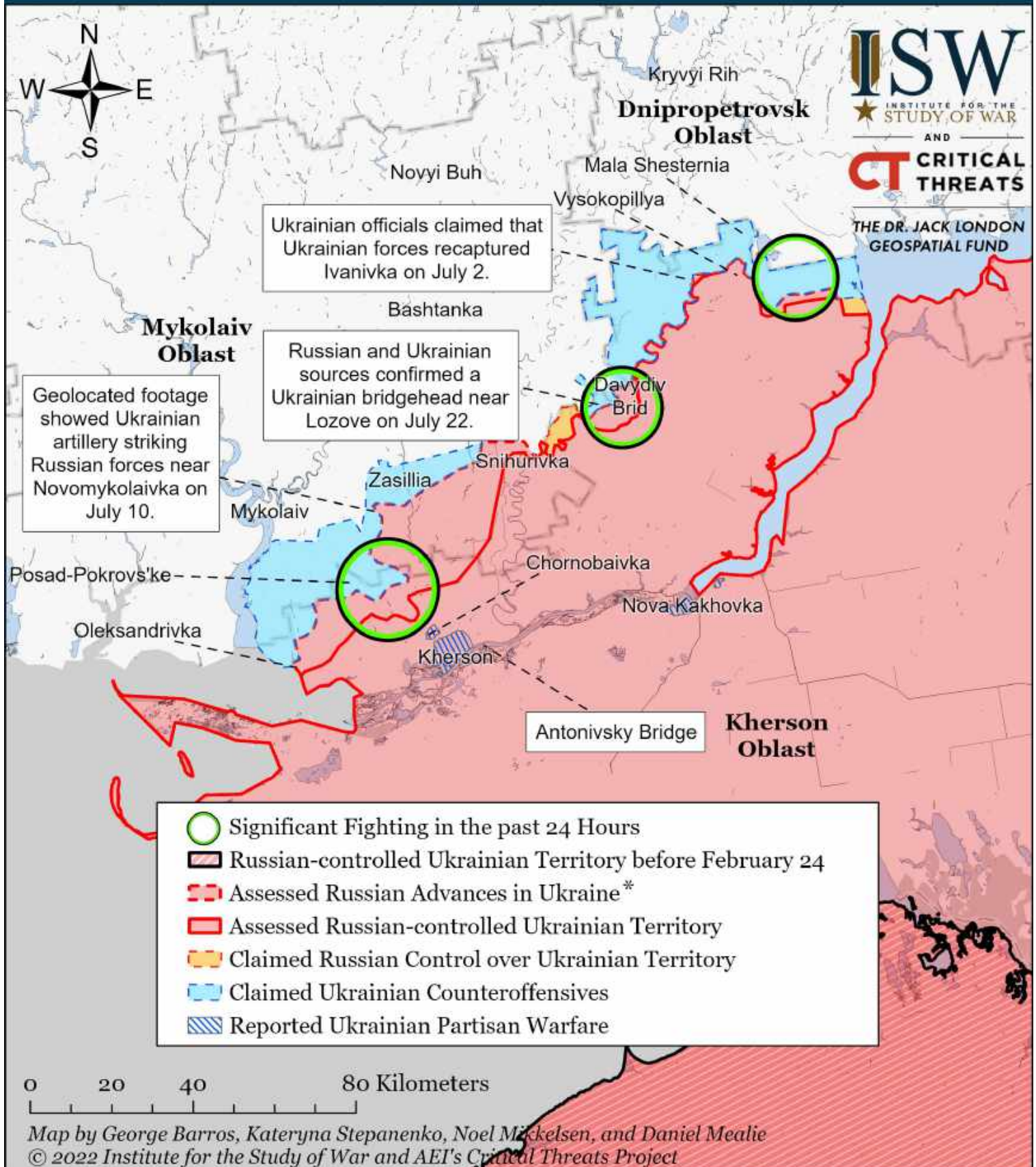


\* Assessed Russian advances are areas where ISW assesses Russian forces have operated in or launched attacks against but do not control.

Note: Kherson Oblast Administration Head Dmytro Butriy reported on August 2 that Ukrainian forces liberated an additional seven unnamed villages in Kherson Oblast. ISW will continue to monitor the situation and will update our maps when open sources name the liberated settlements.



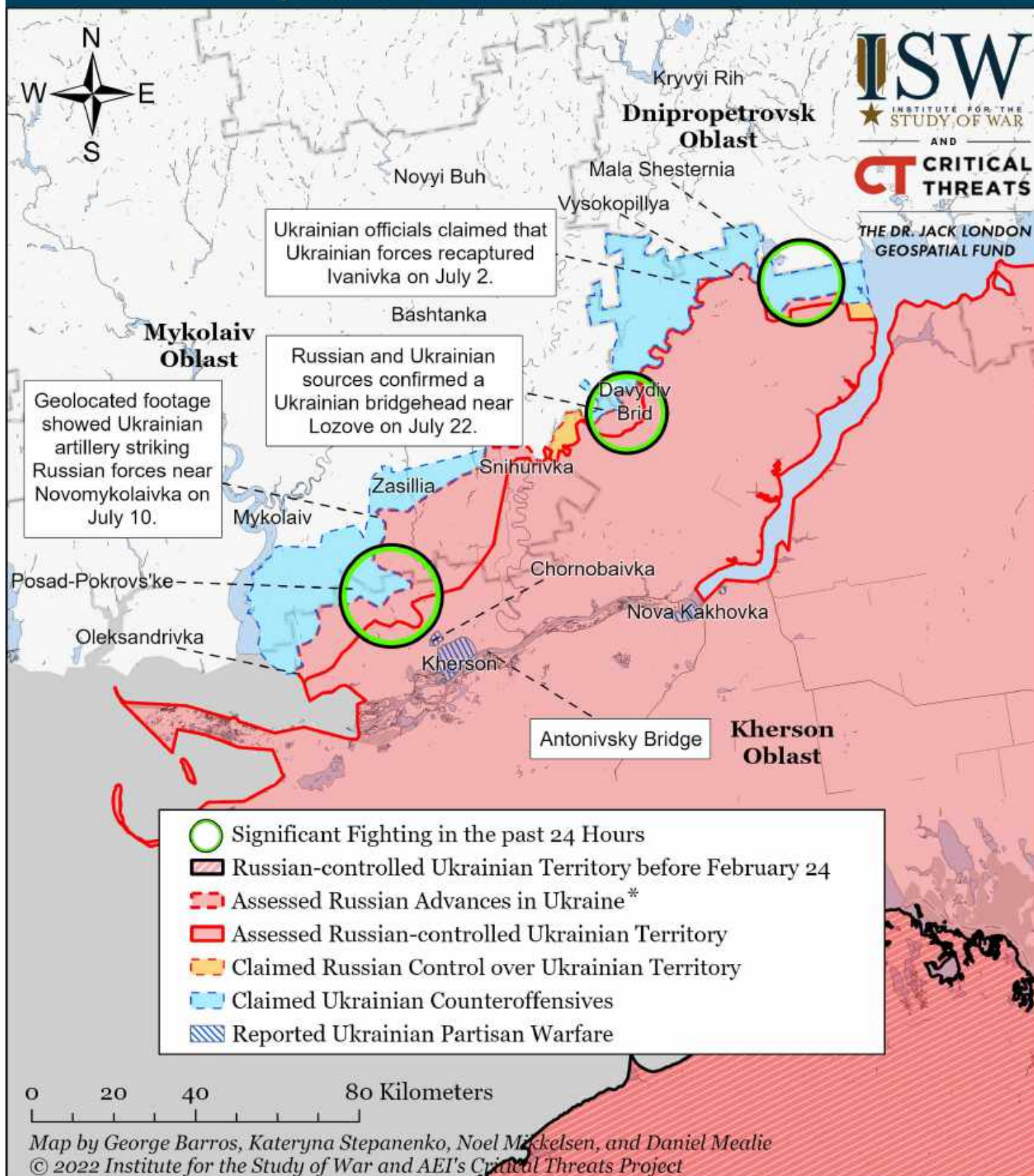
# Assessed Control of Terrain Around Kherson and Mykolaiv as of August 1, 2022, 3:00 PM ET



\* Assessed Russian advances are areas where ISW assesses Russian forces have operated in or launched attacks against but do not control.



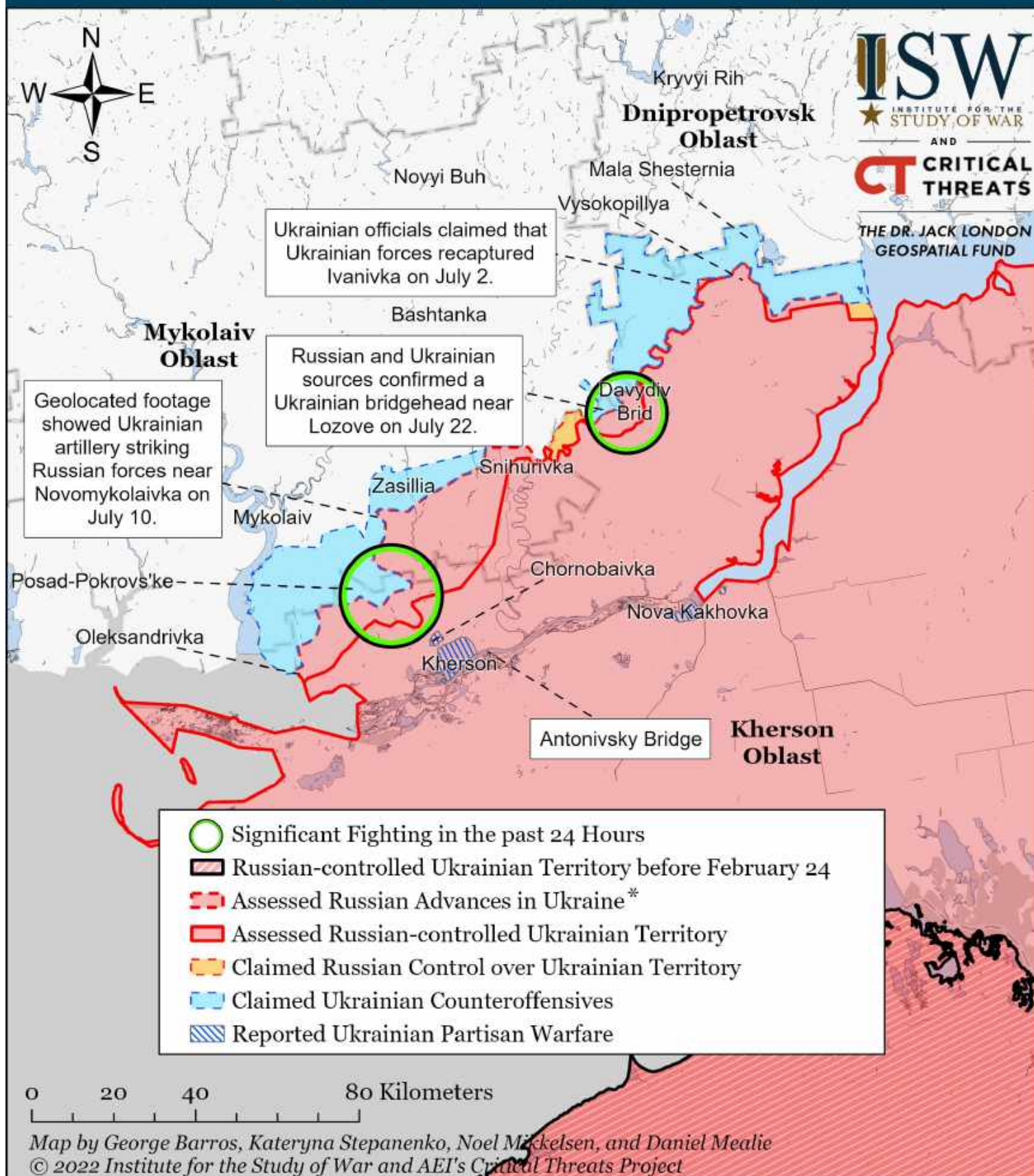
# Assessed Control of Terrain Around Kherson and Mykolaiv as of July 31, 2022, 3:00 PM ET



\* Assessed Russian advances are areas where ISW assesses Russian forces have operated in or launched attacks against but do not control.



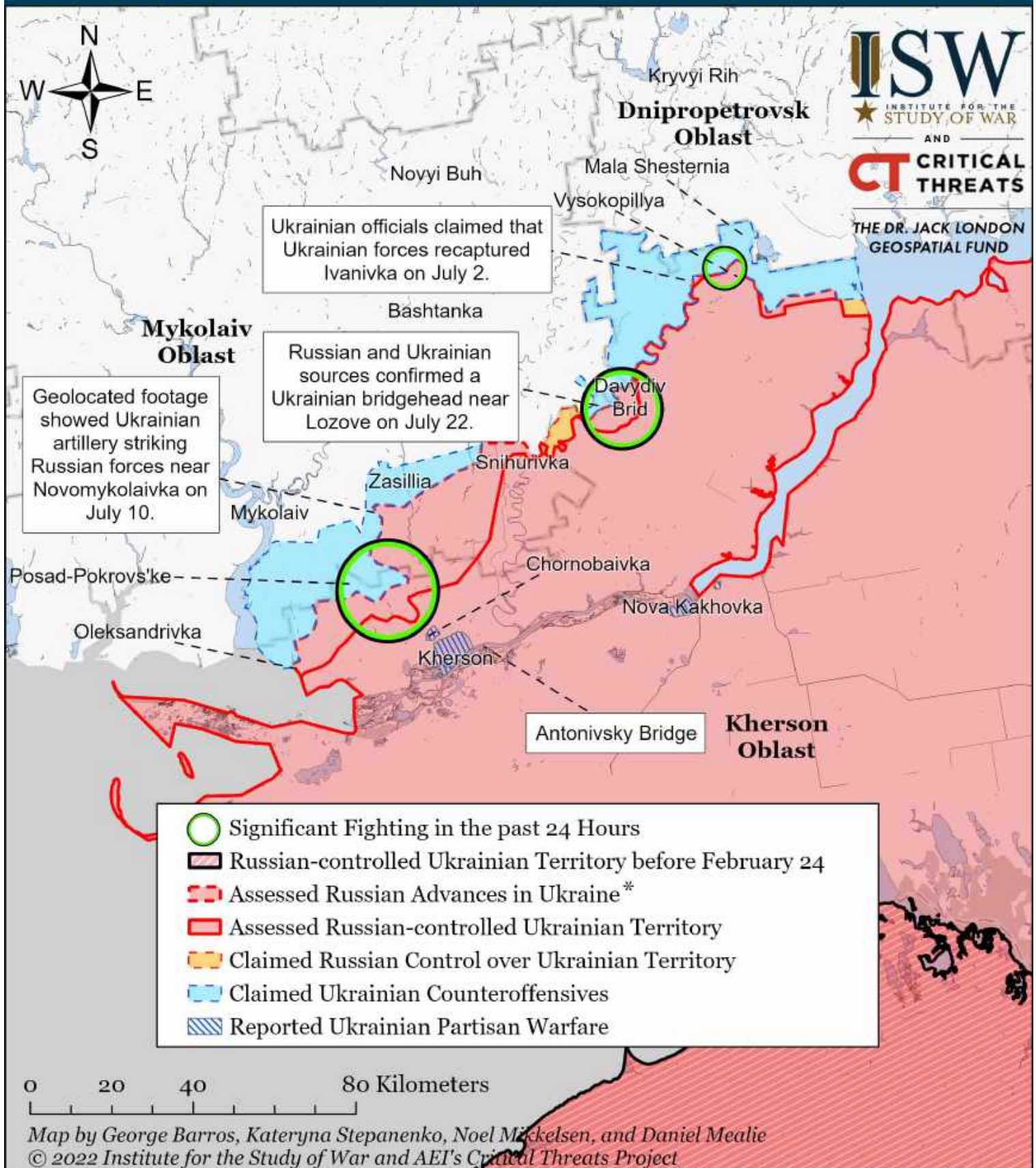
# Assessed Control of Terrain Around Kherson and Mykolaiv as of July 30, 2022, 3:00 PM ET



\* Assessed Russian advances are areas where ISW assesses Russian forces have operated in or launched attacks against but do not control.



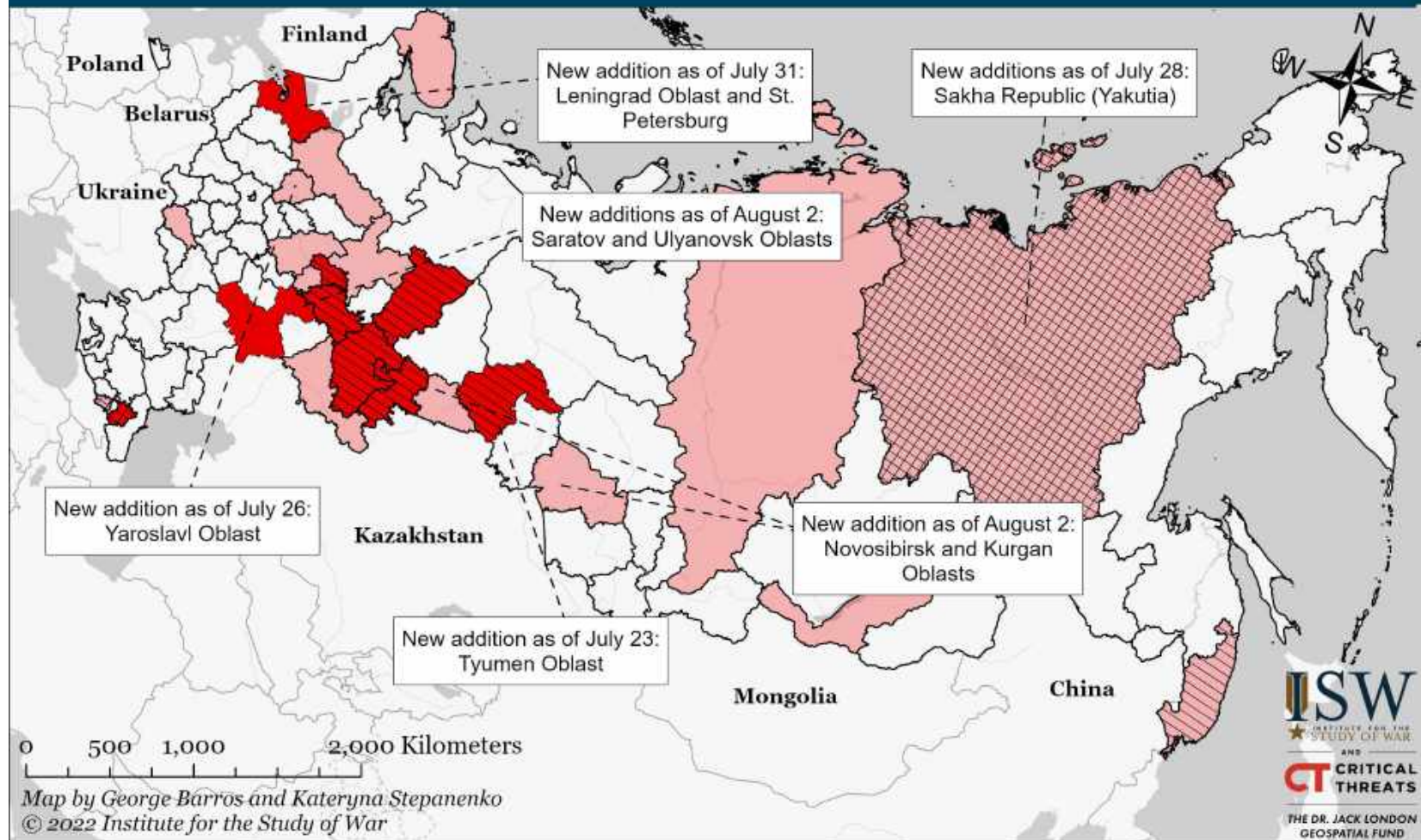
# Assessed Control of Terrain Around Kherson and Mykolaiv as of July 29, 2022, 3:00 PM ET



\* Assessed Russian advances are areas where ISW assesses Russian forces have operated in or launched attacks against but do not control.



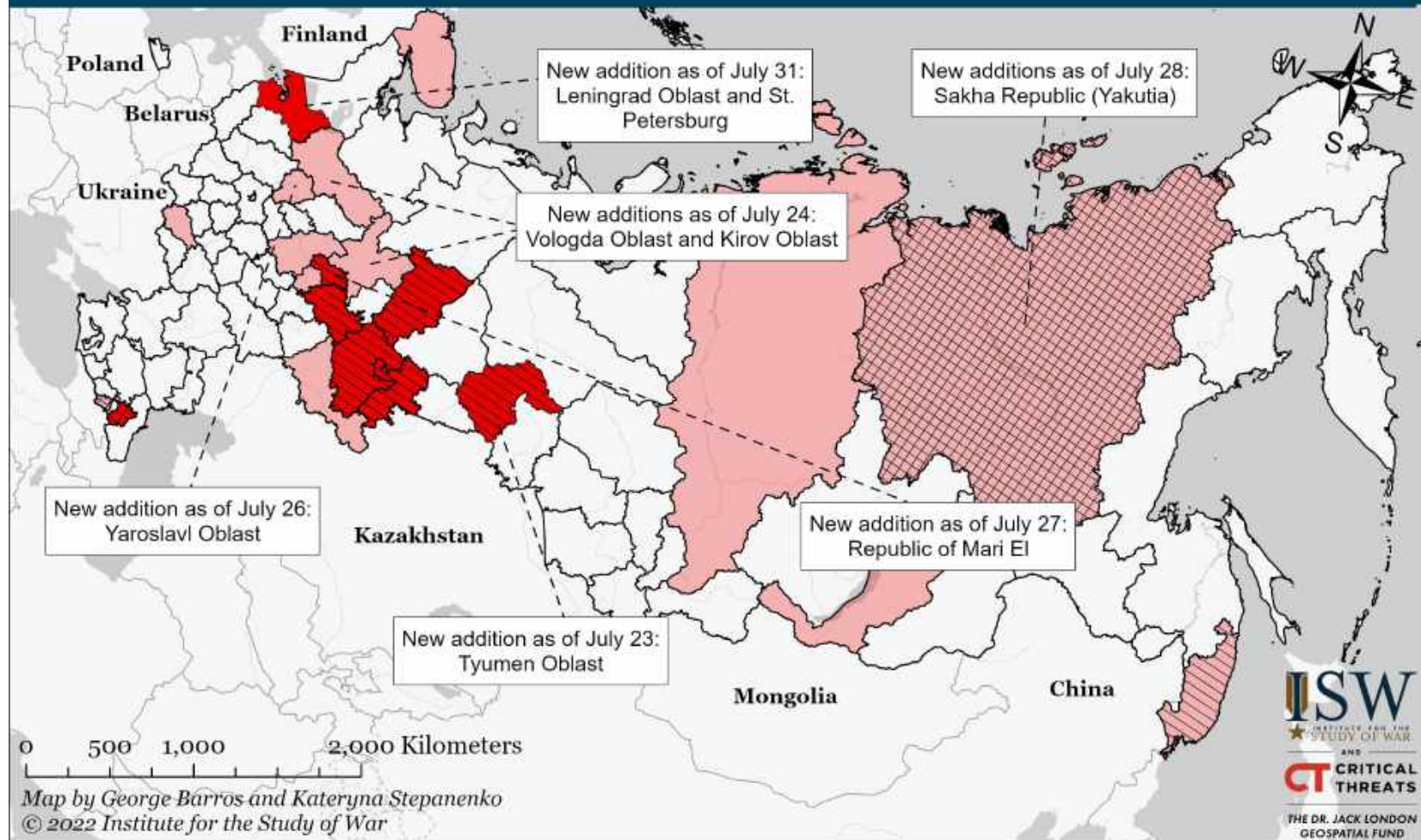
# Confirmed Russian Regions (Federal Subjects) Generating "Volunteer" Units to Fight in Ukraine as of August 2, 2022



- |   |  |
|---|--|
| <span style="display: inline-block; width: 15px; height: 10px; background-color: #f08080; border: 1px solid black;"></span> Federal Subject Contributing or Generating a Unit         | <span style="display: inline-block; width: 15px; height: 10px; background: repeating-linear-gradient(45deg, transparent, transparent 2px, black 2px, black 4px); border: 1px solid black;"></span> Unit Deployed to a Training Ground before Deployment to Ukraine |
| <span style="display: inline-block; width: 15px; height: 10px; background-color: #ff0000; border: 1px solid black;"></span> Federal Subject Contributing or Generating Multiple Units | <span style="display: inline-block; width: 15px; height: 10px; background: repeating-linear-gradient(-45deg, transparent, transparent 2px, black 2px, black 4px); border: 1px solid black;"></span> Unit Deployed to Ukraine                                       |



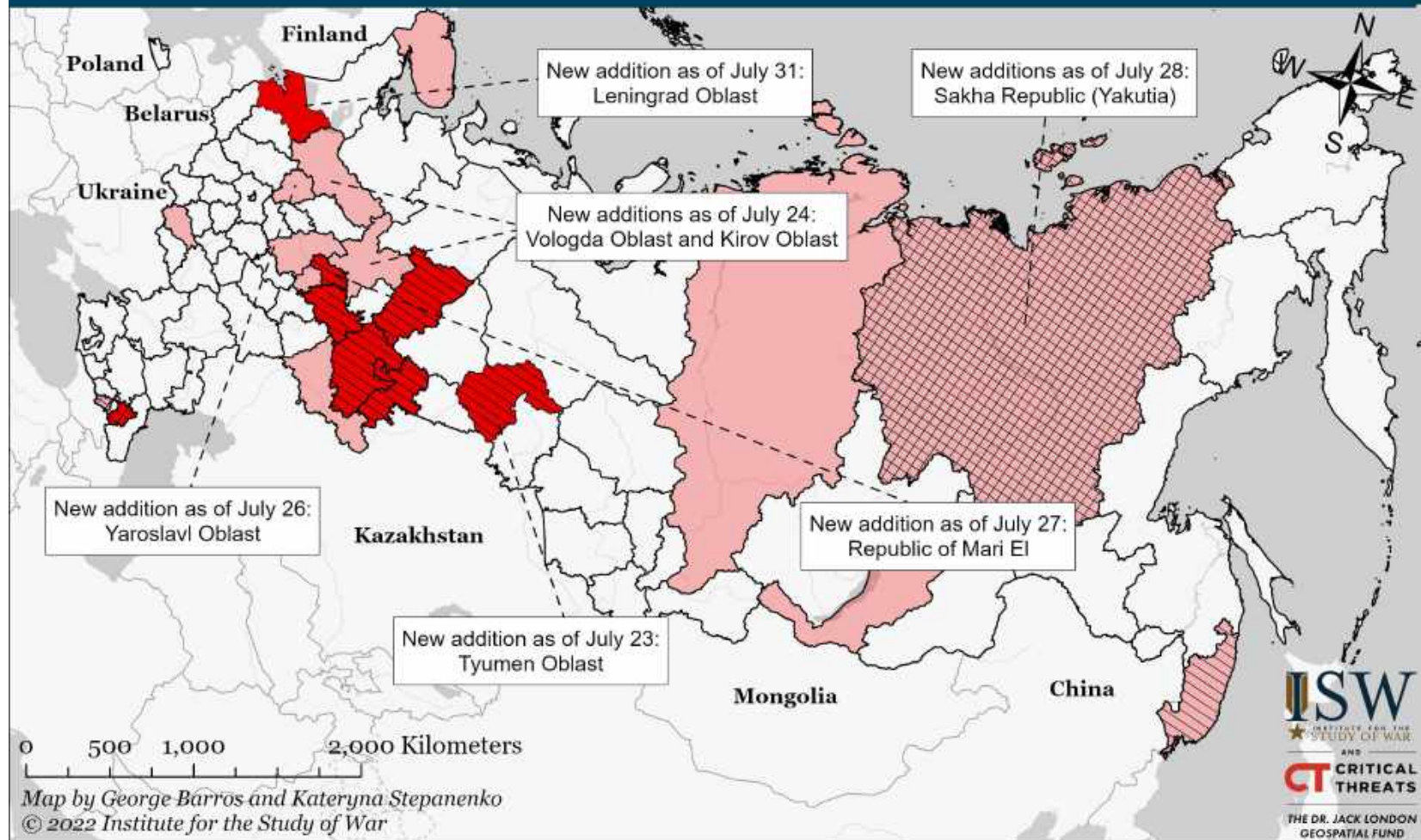
# Confirmed Russian Regions (Federal Subjects) Generating "Volunteer" Units to Fight in Ukraine as of August 1, 2022



<span style="display: inline-block; width: 15px; height: 10px; background-color: #f08080; border: 1px solid black;"></span> Federal Subject Contributing or Generating a Unit	<span style="display: inline-block; width: 15px; height: 10px; background: repeating-linear-gradient(45deg, transparent, transparent 2px, black 2px, black 4px); border: 1px solid black;"></span> Unit Deployed to a Training Ground before Deployment to Ukraine
<span style="display: inline-block; width: 15px; height: 10px; background-color: #ff0000; border: 1px solid black;"></span> Federal Subject Contributing or Generating Multiple Units	<span style="display: inline-block; width: 15px; height: 10px; background: repeating-linear-gradient(-45deg, transparent, transparent 2px, black 2px, black 4px); border: 1px solid black;"></span> Unit Deployed to Ukraine



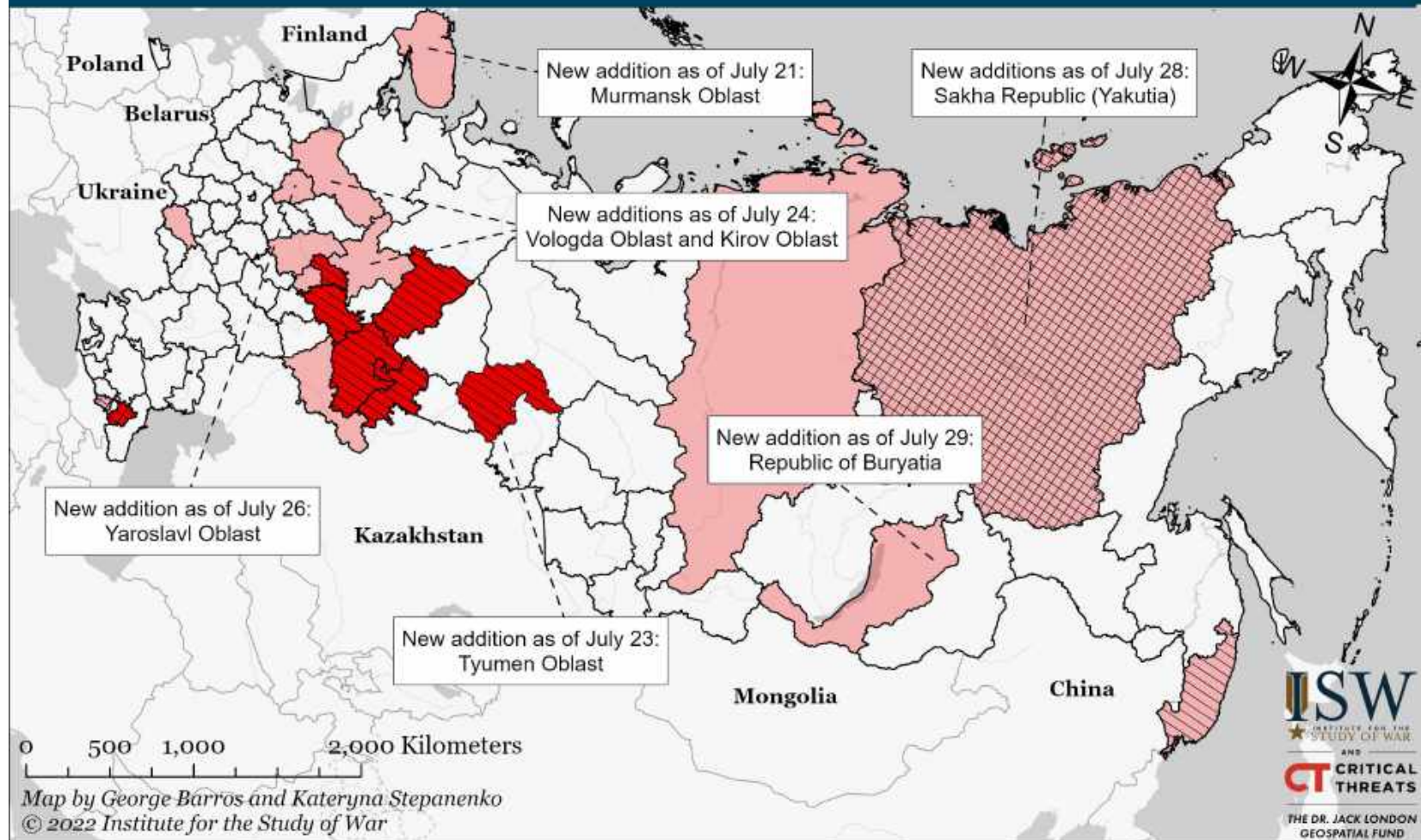
# Confirmed Russian Regions (Federal Subjects) Generating "Volunteer" Units to Fight in Ukraine as of July 31, 2022



- |   |  |
|---|--|
| <span style="display: inline-block; width: 15px; height: 10px; background-color: #f08080; border: 1px solid black;"></span> Federal Subject Contributing or Generating a Unit         | <span style="display: inline-block; width: 15px; height: 10px; background: repeating-linear-gradient(45deg, transparent, transparent 2px, black 2px, black 4px); border: 1px solid black;"></span> Unit Deployed to a Training Ground before Deployment to Ukraine |
| <span style="display: inline-block; width: 15px; height: 10px; background-color: #ff0000; border: 1px solid black;"></span> Federal Subject Contributing or Generating Multiple Units | <span style="display: inline-block; width: 15px; height: 10px; background: repeating-linear-gradient(-45deg, transparent, transparent 2px, black 2px, black 4px); border: 1px solid black;"></span> Unit Deployed to Ukraine                                       |



# Confirmed Russian Regions (Federal Subjects) Generating "Volunteer" Units to Fight in Ukraine as of July 29, 2022



<span style="display: inline-block; width: 15px; height: 10px; background-color: #f08080; border: 1px solid black;"></span> Federal Subject Contributing or Generating a Unit	<span style="display: inline-block; width: 15px; height: 10px; background: repeating-linear-gradient(45deg, transparent, transparent 2px, black 2px, black 4px); border: 1px solid black;"></span> Unit Deployed to a Training Ground before Deployment to Ukraine
<span style="display: inline-block; width: 15px; height: 10px; background-color: #ff0000; border: 1px solid black;"></span> Federal Subject Contributing or Generating Multiple Units	<span style="display: inline-block; width: 15px; height: 10px; background: repeating-linear-gradient(-45deg, transparent, transparent 2px, black 2px, black 4px); border: 1px solid black;"></span> Unit Deployed to Ukraine