

Assessed Control of Terrain in Ukraine and Main Russian Maneuver Axes as of September 1, 2022, 3:00 PM ET



Map by George Barros, Kateryna Stepanenko, Noel Mikkelsen, and Daniel Mealie
© 2022 Institute for the Study of War and AEI's Critical Threats Project

* Assessed Russian advances are areas where ISW assesses Russian forces have operated in or launched attacks against but do not control.

Assessed Control of Terrain in Ukraine and Main Russian Maneuver Axes as of August 31, 2022, 3:00 PM ET



Map by George Barros, Kateryna Stepanenko, Noel Mikkelsen, and Daniel Mealie
© 2022 Institute for the Study of War and AEI's Critical Threats Project

* Assessed Russian advances are areas where ISW assesses Russian forces have operated in or launched attacks against but do not control.

Assessed Control of Terrain in Ukraine and Main Russian Maneuver Axes as of August 30, 2022, 3:00 PM ET



Map by George Barros, Kateryna Stepanenko, Noel Mikkelsen, and Daniel Mealie
© 2022 Institute for the Study of War and AEI's Critical Threats Project

* Assessed Russian advances are areas where ISW assesses Russian forces have operated in or launched attacks against but do not control.

Assessed Control of Terrain in Ukraine and Main Russian Maneuver Axes as of August 29, 2022, 3:00 PM ET



Map by George Barros, Kateryna Stepanenko, Noel Mikkelsen, and Daniel Mealie
© 2022 Institute for the Study of War and AEI's Critical Threats Project

* Assessed Russian advances are areas where ISW assesses Russian forces have operated in or launched attacks against but do not control.

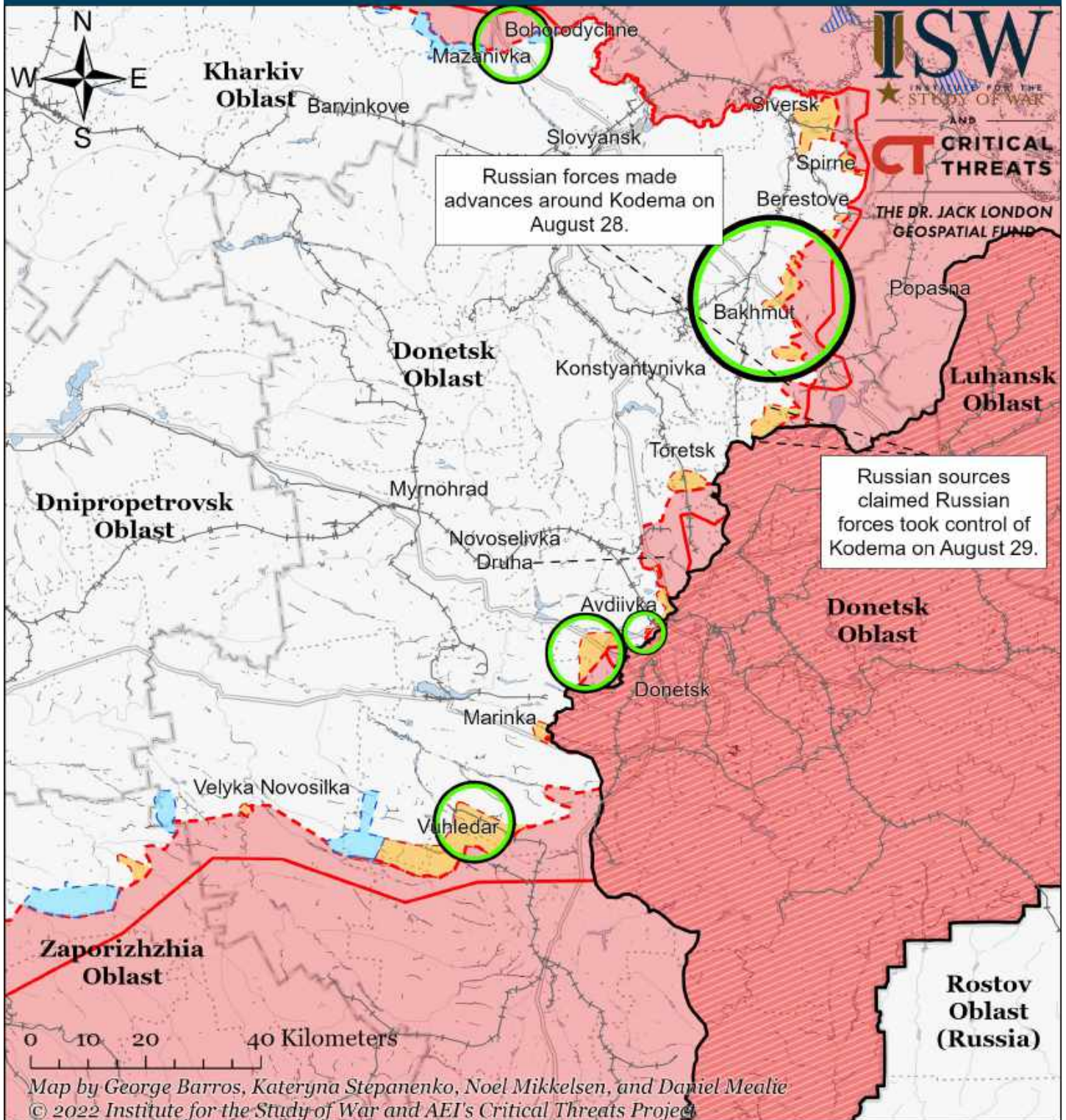
Assessed Control of Terrain in Ukraine and Main Russian Maneuver Axes as of August 28, 2022, 3:00 PM ET



Map by George Barros, Kateryna Stepanenko, Noel Mikkelsen, and Daniel Mealie
© 2022 Institute for the Study of War and AEI's Critical Threats Project

* Assessed Russian advances are areas where ISW assesses Russian forces have operated in or launched attacks against but do not control.

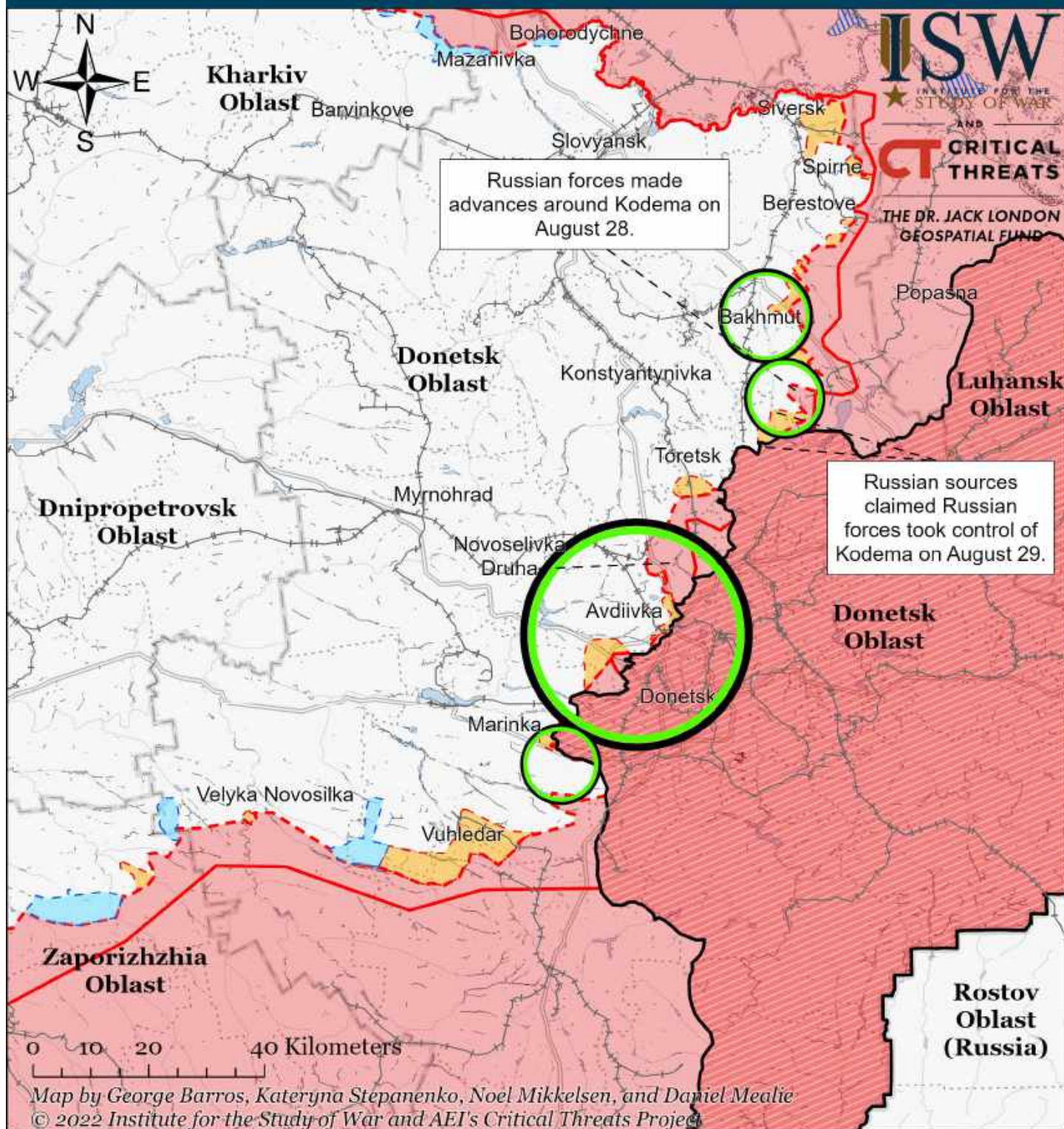
Assessed Control of Terrain Around Donetsk as of September 1, 2022, 3:00 PM ET



- Significant Fighting in the past 24 Hours
- Assessed Russian-controlled Ukrainian Territory
- Reported Ukrainian Partisan Warfare
- Russian-controlled Ukrainian Territory before February 24
- Claimed Russian Control over Ukrainian Territory
- Major Railroads
- Assessed Russian Advances in Ukraine*
- Claimed Ukrainian Counteroffensives

* Assessed Russian advances are areas where ISW assesses Russian forces have operated in or launched attacks against but do not control.

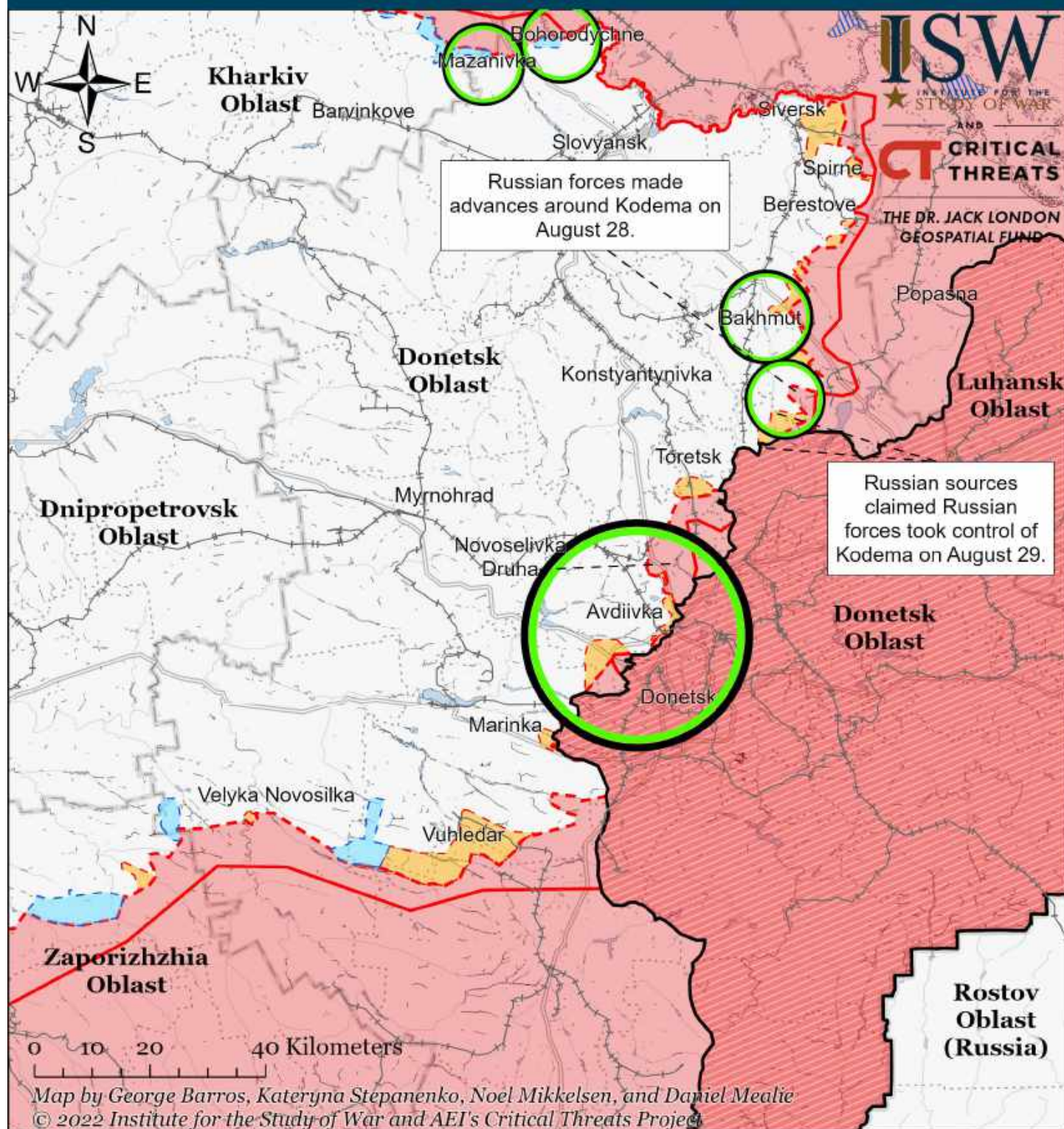
Assessed Control of Terrain Around Donetsk as of August 31, 2022, 3:00 PM ET



- Significant Fighting in the past 24 Hours
- Assessed Russian-controlled Ukrainian Territory
- Russian-controlled Ukrainian Territory before February 24
- Claimed Russian Control over Ukrainian Territory
- Assessed Russian Advances in Ukraine*
- Claimed Ukrainian Counteroffensives
- Reported Ukrainian Partisan Warfare
- Major Railroads

* Assessed Russian advances are areas where ISW assesses Russian forces have operated in or launched attacks against but do not control.

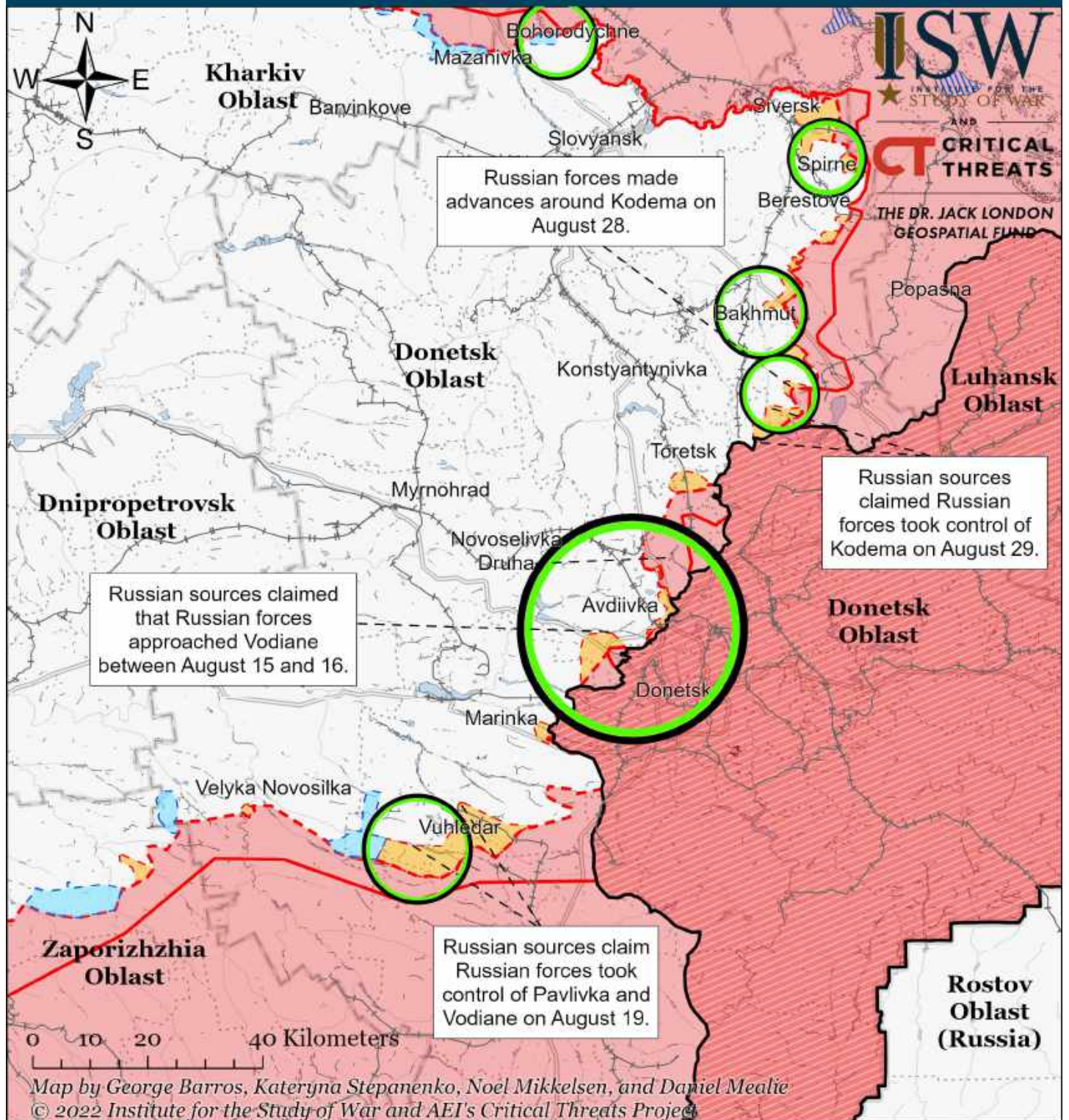
Assessed Control of Terrain Around Donetsk as of August 30, 2022, 3:00 PM ET



- Significant Fighting in the past 24 Hours
- Assessed Russian-controlled Ukrainian Territory
- Russian-controlled Ukrainian Territory before February 24
- Claimed Russian Control over Ukrainian Territory
- Assessed Russian Advances in Ukraine*
- Claimed Ukrainian Counteroffensives
- Reported Ukrainian Partisan Warfare
- Major Railroads

* Assessed Russian advances are areas where ISW assesses Russian forces have operated in or launched attacks against but do not control.

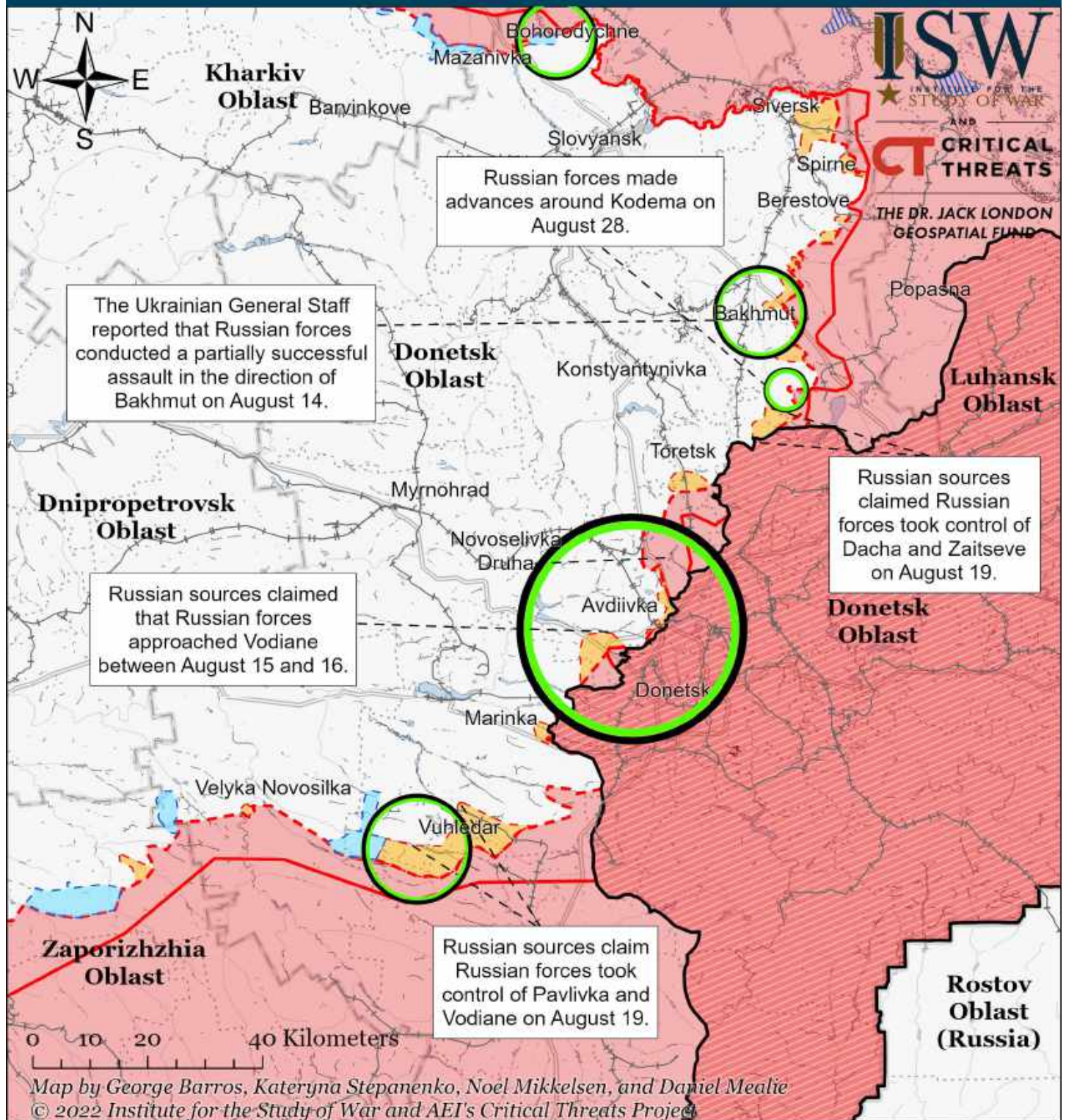
Assessed Control of Terrain Around Donetsk as of August 29, 2022, 3:00 PM ET



- Significant Fighting in the past 24 Hours
- Assessed Russian-controlled Ukrainian Territory
- ▨ Reported Ukrainian Partisan Warfare
- Russian-controlled Ukrainian Territory before February 24
- Claimed Russian Control over Ukrainian Territory
- Major Railroads
- - - Assessed Russian Advances in Ukraine*
- Claimed Ukrainian Counteroffensives

* Assessed Russian advances are areas where ISW assesses Russian forces have operated in or launched attacks against but do not control.

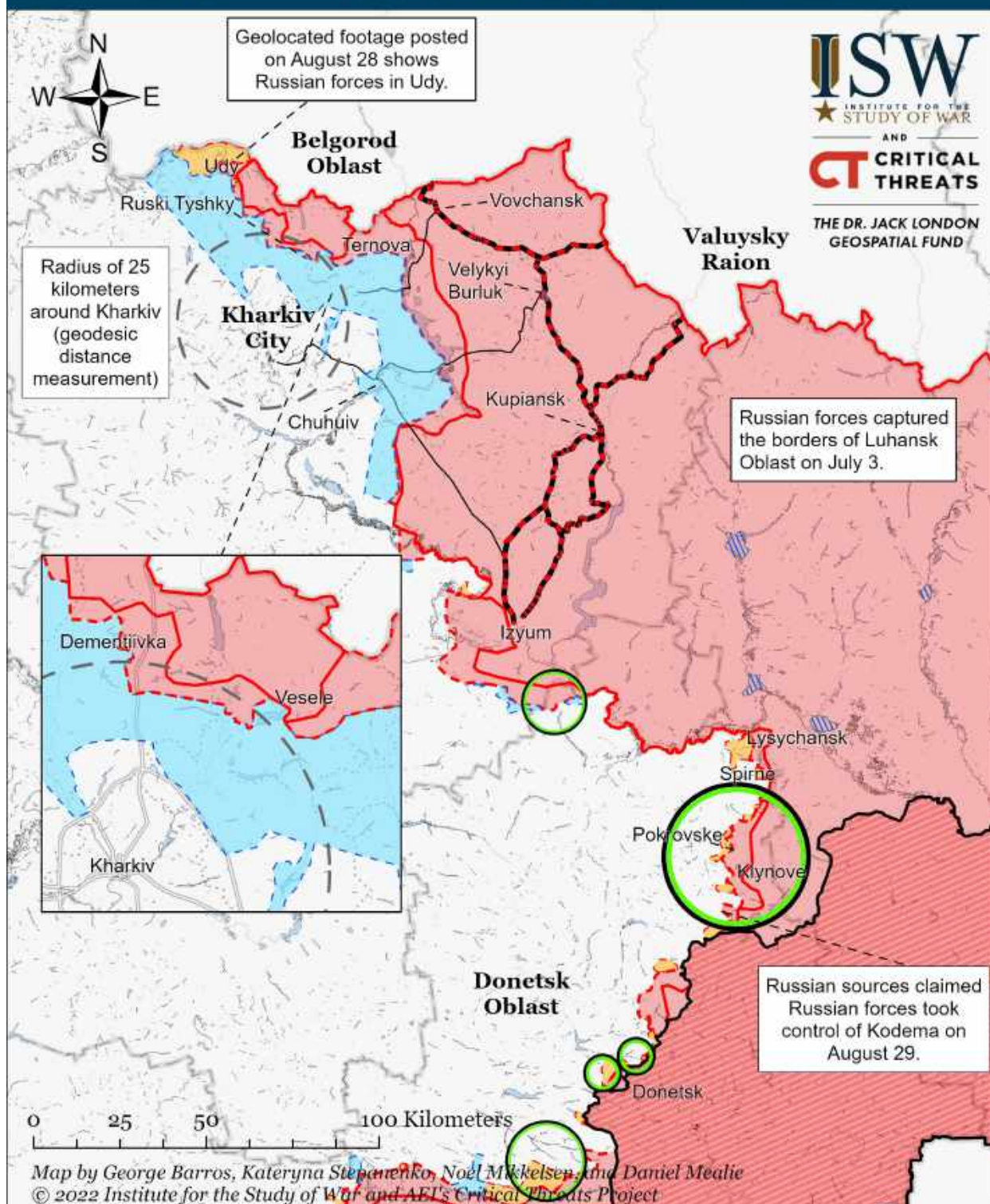
Assessed Control of Terrain Around Donetsk as of August 28, 2022, 3:00 PM ET



- Significant Fighting in the past 24 Hours
- Assessed Russian-controlled Ukrainian Territory
- Reported Ukrainian Partisan Warfare
- Russian-controlled Ukrainian Territory before February 24
- Claimed Russian Control over Ukrainian Territory
- + Major Railroads
- - - Assessed Russian Advances in Ukraine*
- Claimed Ukrainian Counteroffensives

* Assessed Russian advances are areas where ISW assesses Russian forces have operated in or launched attacks against but do not control.

Assessed Control of Terrain Around Kharkiv as of September 1, 2022, 3:00 PM ET

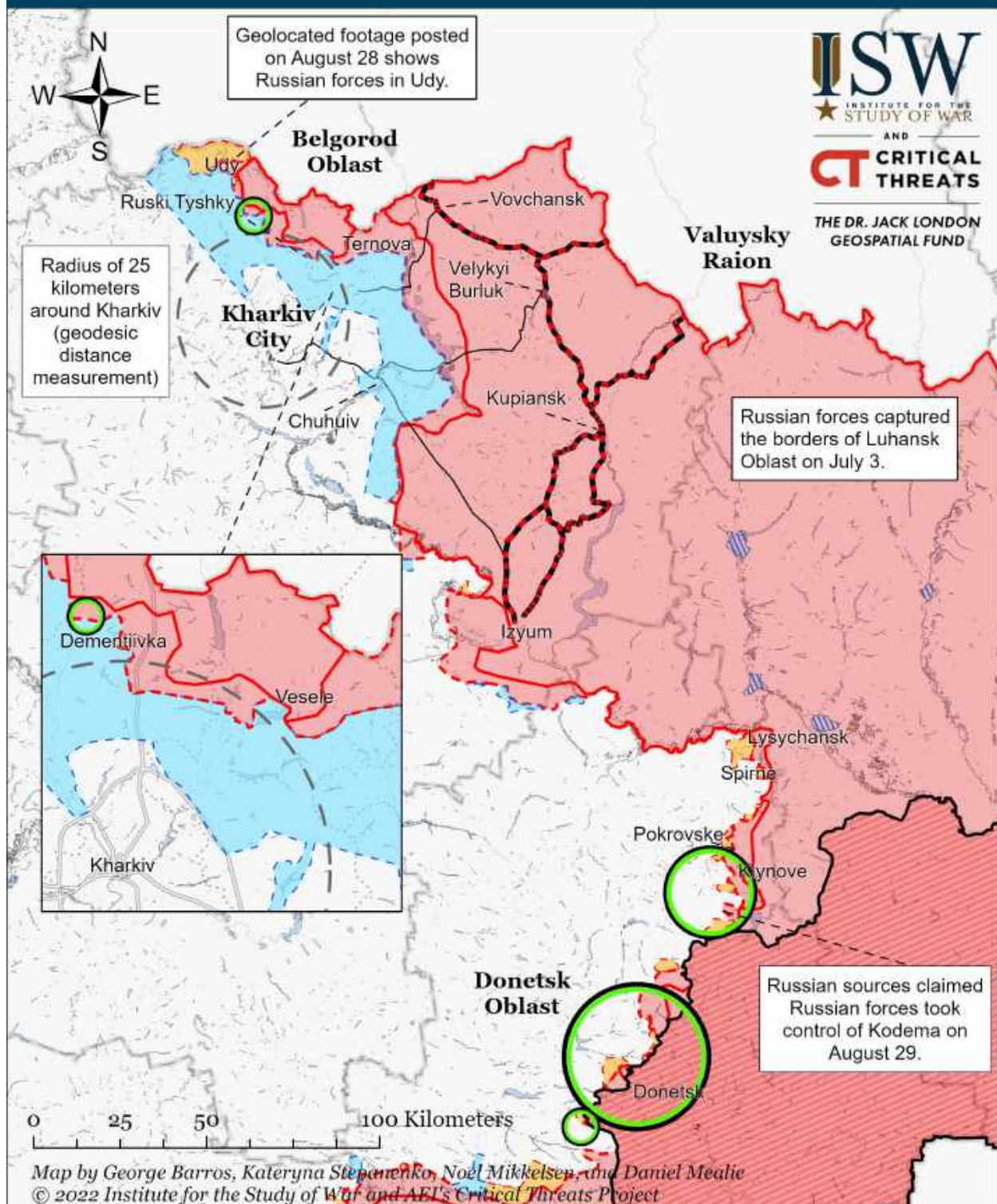


- | | | |
|---|---|--|
| Significant Fighting in the past 24 Hours | Russian-controlled Ukrainian Territory before February 24 | Claimed Russian Control over Ukrainian Territory |
| Key Ukrainian Roads | Assessed Russian Advances in Ukraine* | Claimed Ukrainian Counteroffensives |
| Russian Ground Lines of Communication | Assessed Russian-controlled Ukrainian Territory | Reported Ukrainian Partisan Warfare |

* Assessed Russian advances are areas where ISW assesses Russian forces have operated in or launched attacks against but do not control.

Note: ISW recessed assessed Russian advances north of Dolyna and Russian claims over Dolyna based on a geolocated video published on August 26 that shows Ukrainian forces freely operating in the settlement. ISW has recessed Russian assessed advances around Brazhivka based on a geolocated video published on August 29 showing Russian artillery striking the northwestern outskirts of the settlement.

Assessed Control of Terrain Around Kharkiv as of August 31, 2022, 3:00 PM ET

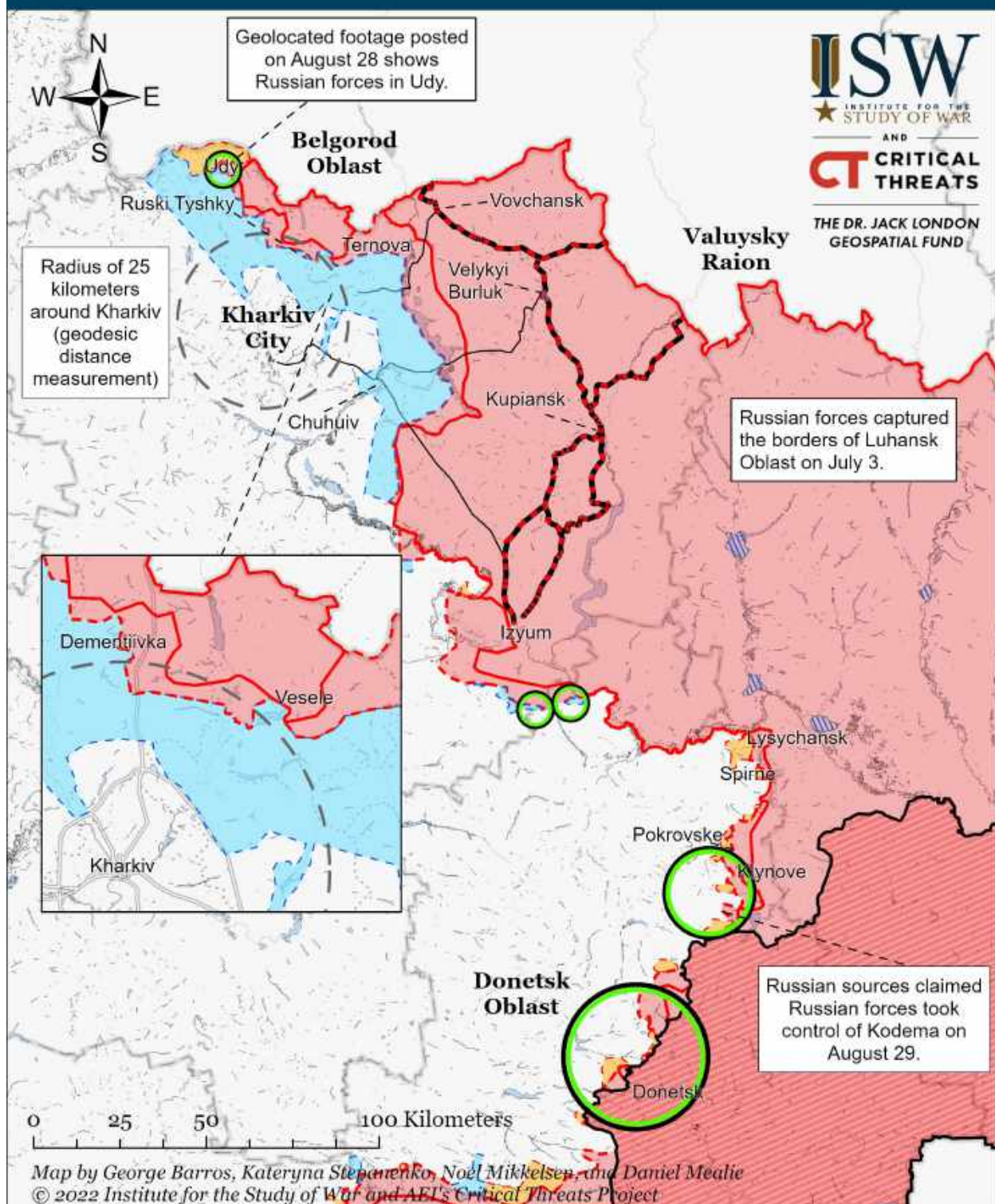


- | | | |
|---|---|--|
| Significant Fighting in the past 24 Hours | Russian-controlled Ukrainian Territory before February 24 | Claimed Russian Control over Ukrainian Territory |
| Key Ukrainian Roads | Assessed Russian Advances in Ukraine* | Claimed Ukrainian Counteroffensives |
| Russian Ground Lines of Communication | Assessed Russian-controlled Ukrainian Territory | Reported Ukrainian Partisan Warfare |

* Assessed Russian advances are areas where ISW assesses Russian forces have operated in or launched attacks against but do not control.

Note: ISW recessed assessed Russian advances north of Dolyna and Russian claims over Dolyna based on a geolocated video published on August 26 that shows Ukrainian forces freely operating in the settlement. ISW has recessed Russian assessed advances around Brazhivka based on a geolocated video published on August 29 showing Russian artillery striking the northwestern outskirts of the settlement.

Assessed Control of Terrain Around Kharkiv as of August 30, 2022, 3:00 PM ET



○ Significant Fighting in the past 24 Hours

— Key Ukrainian Roads

— Russian Ground Lines of Communication

■ Russian-controlled Ukrainian Territory before February 24

■ Assessed Russian Advances in Ukraine*

■ Assessed Russian-controlled Ukrainian Territory

■ Claimed Russian Control over Ukrainian Territory

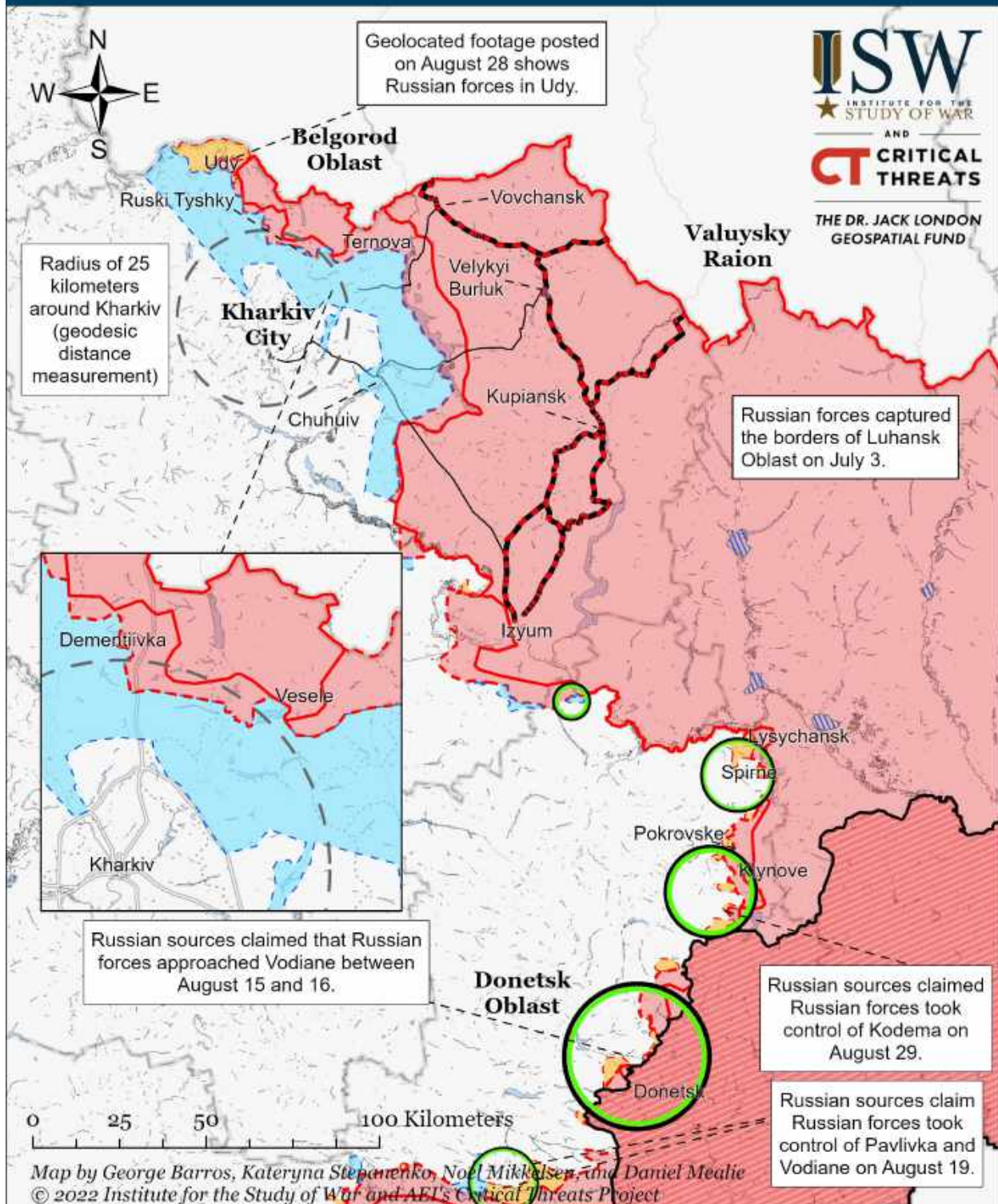
■ Claimed Ukrainian Counteroffensives

■ Reported Ukrainian Partisan Warfare

* Assessed Russian advances are areas where ISW assesses Russian forces have operated in or launched attacks against but do not control.

Note: ISW recessed assessed Russian advances north of Dolyna and Russian claims over Dolyna based on a geolocated video published on August 26 that shows Ukrainian forces freely operating in the settlement. ISW has recessed Russian assessed advances around Brazhkyvka based on a geolocated video published on August 29 showing Russian artillery striking the northwestern outskirts of the settlement.

Assessed Control of Terrain Around Kharkiv as of August 29, 2022, 3:00 PM ET

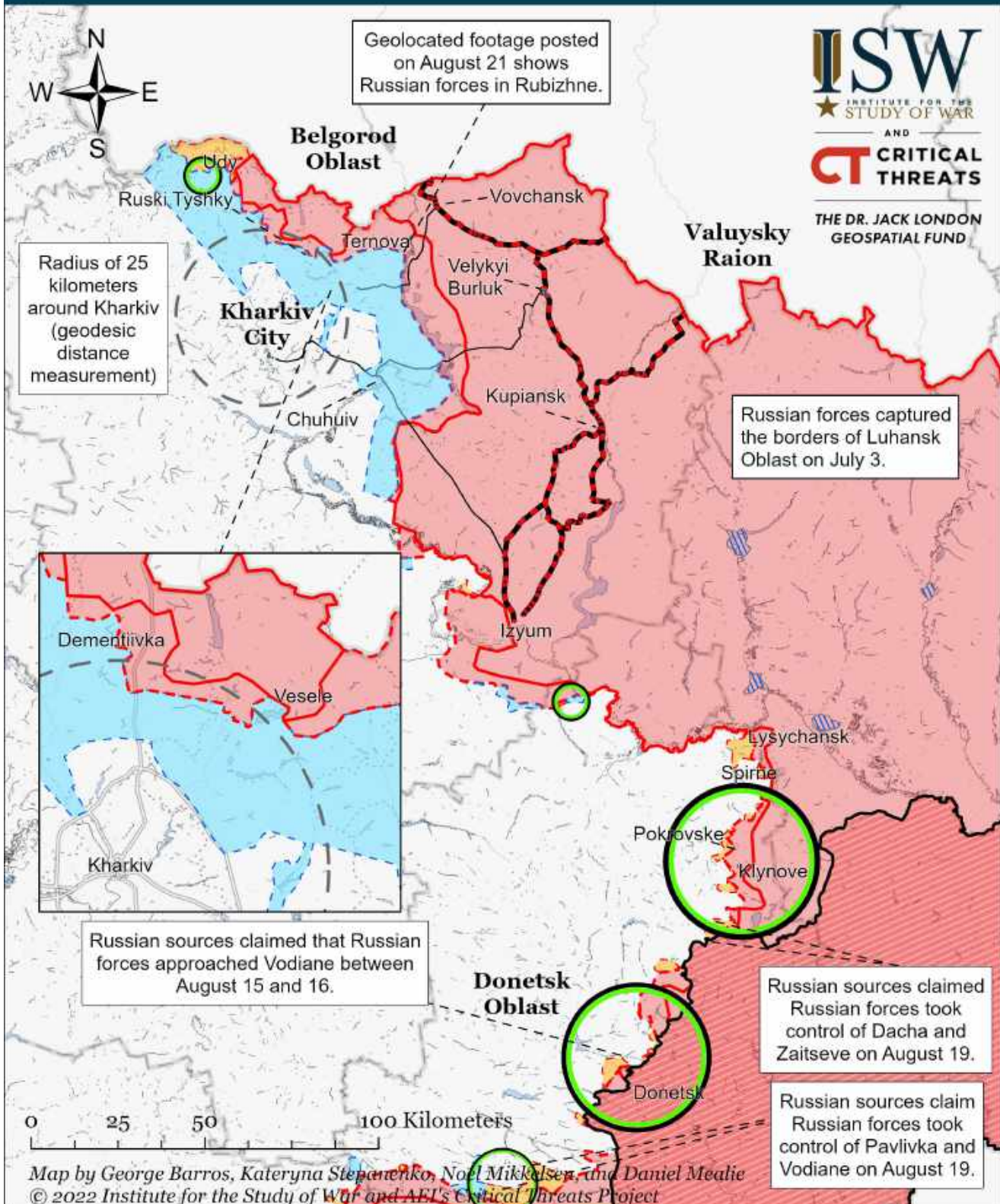


- | | | |
|---|---|--|
| Significant Fighting in the past 24 Hours | Russian-controlled Ukrainian Territory before February 24 | Claimed Russian Control over Ukrainian Territory |
| Key Ukrainian Roads | Assessed Russian Advances in Ukraine* | Claimed Ukrainian Counteroffensives |
| Russian Ground Lines of Communication | Assessed Russian-controlled Ukrainian Territory | Reported Ukrainian Partisan Warfare |

* Assessed Russian advances are areas where ISW assesses Russian forces have operated in or launched attacks against but do not control.

Note: ISW recessed Russian assessed advances north of Dolyna and Russian claims over Dolyna based on a geolocated video published on August 26 that shows Ukrainian forces freely operating in the settlement. ISW has recessed Russian assessed advances around Brazhkyvka based on a geolocated video published on August 29 showing Russian artillery striking the northwestern outskirts of the settlement.

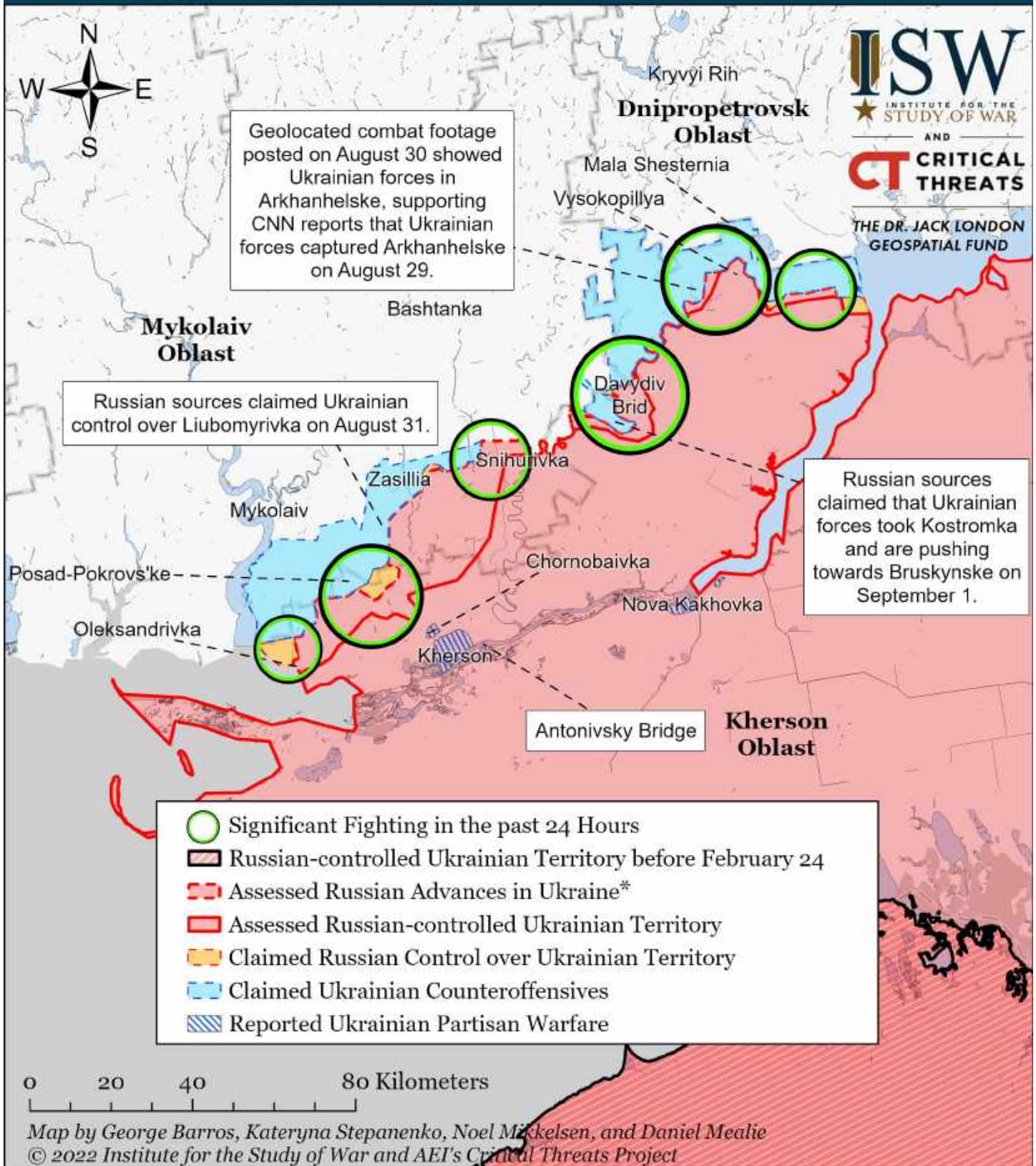
Assessed Control of Terrain Around Kharkiv as of August 28, 2022, 3:00 PM ET



- | | | |
|---|---|--|
| Significant Fighting in the past 24 Hours | Russian-controlled Ukrainian Territory before February 24 | Claimed Russian Control over Ukrainian Territory |
| Key Ukrainian Roads | Assessed Russian Advances in Ukraine* | Claimed Ukrainian Counteroffensives |
| Russian Ground Lines of Communication | Assessed Russian-controlled Ukrainian Territory | Reported Ukrainian Partisan Warfare |

* Assessed Russian advances are areas where ISW assesses Russian forces have operated in or launched attacks against but do not control.

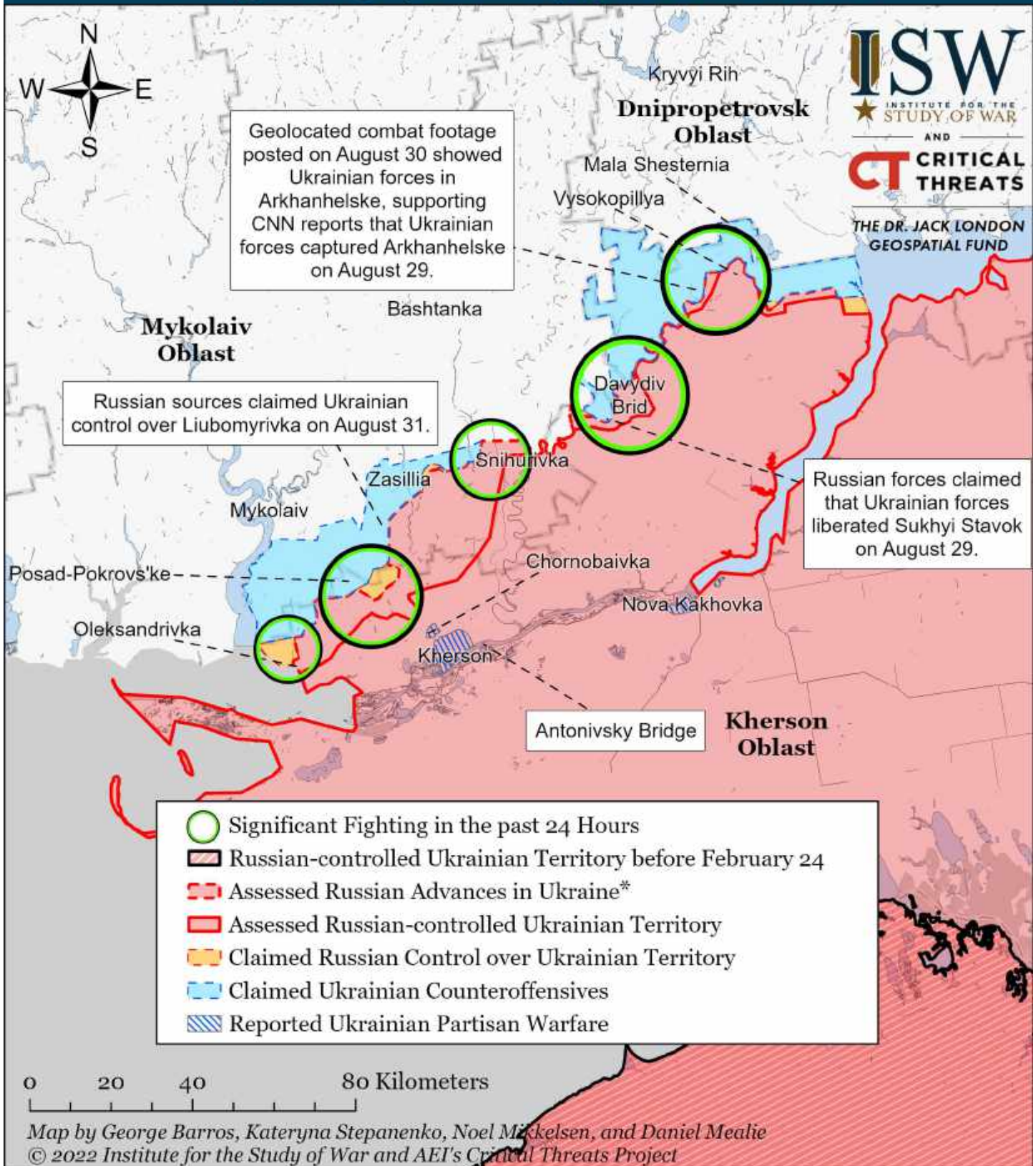
Assessed Control of Terrain Around Kherson and Mykolaiv as of September 1, 2022, 3:00 PM ET



* Assessed Russian advances are areas where ISW assesses Russian forces have operated in or launched attacks against but do not control.

Note: Ukrainian officials announced on August 29 that Ukrainian forces began a counteroffensive in Kherson Oblast. An unnamed military official of an unspecified country told CNN on August 29 that Ukrainian forces liberated Pravdyne, Nova Dmytrivka, and Tomya Balka (northwest of Kherson City) and Arkhanhelske (along the Inhulets River). ISW will readjust the maps when more open sources confirm the liberation of these settlements. ISW extended Ukrainian counteroffensives to Sukhyi Stavok based on several claims from Russian milbloggers that Ukrainian forces liberated the settlement on August 29.

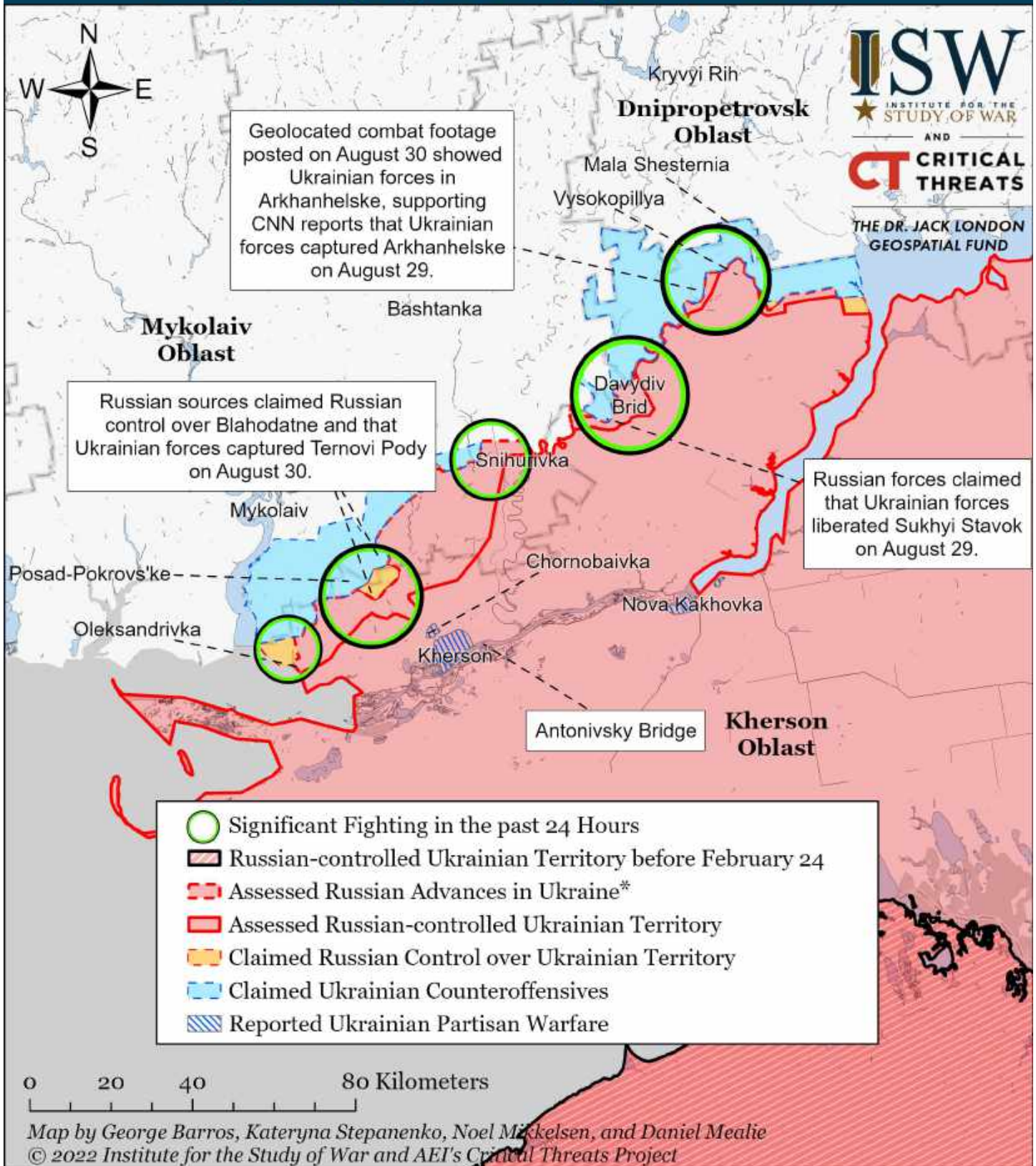
Assessed Control of Terrain Around Kherson and Mykolaiv as of August 31, 2022, 3:00 PM ET



* Assessed Russian advances are areas where ISW assesses Russian forces have operated in or launched attacks against but do not control.

Note: Ukrainian officials announced on August 29 that Ukrainian forces began a counteroffensive in Kherson Oblast. An unnamed military official of an unspecified country told CNN on August 29 that Ukrainian forces liberated Pravdyne, Nova Dmytrivka, and Tomya Balka (northwest of Kherson City) and Arkhanhelske (along the Inhulets River). ISW will readjust the maps when more open sources confirm the liberation of these settlements. ISW extended Ukrainian counteroffensives to Sukhyi Stavok based on several claims from Russian milbloggers that Ukrainian forces liberated the settlement on August 29.

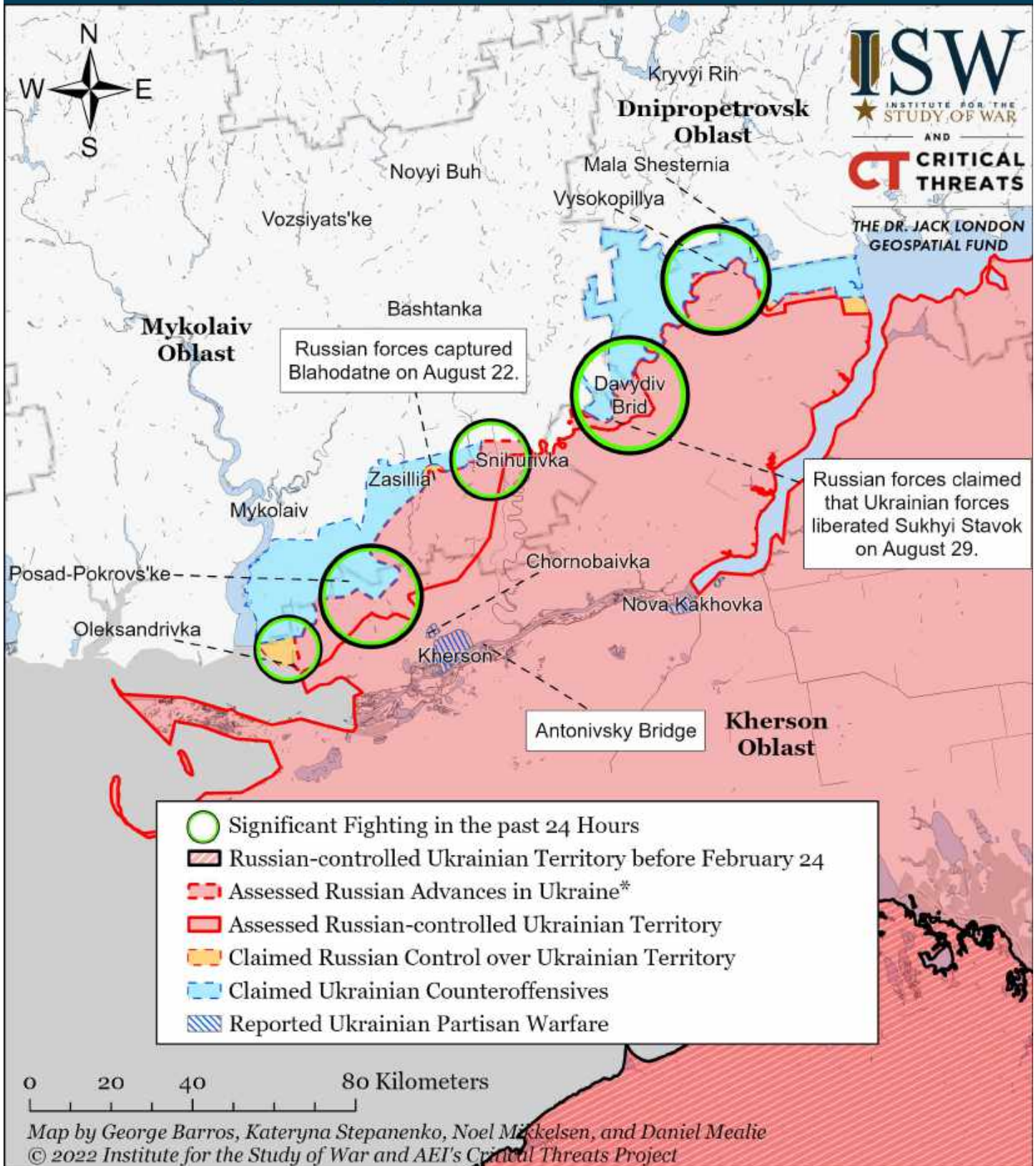
Assessed Control of Terrain Around Kherson and Mykolaiv as of August 30, 2022, 3:00 PM ET



* Assessed Russian advances are areas where ISW assesses Russian forces have operated in or launched attacks against but do not control.

Note: Ukrainian officials announced on August 29 that Ukrainian forces began a counteroffensive in Kherson Oblast. An unnamed military official of an unspecified country told CNN on August 29 that Ukrainian forces liberated Pravdyne, Nova Dmytrivka, and Tomya Balka (northwest of Kherson City) and Arkhanhelske (along the Inhulets River). ISW will readjust the maps when more open sources confirm the liberation of these settlements. ISW extended Ukrainian counteroffensives to Sukhyi Stavok based on several claims from Russian milbloggers that Ukrainian forces liberated the settlement on August 29.

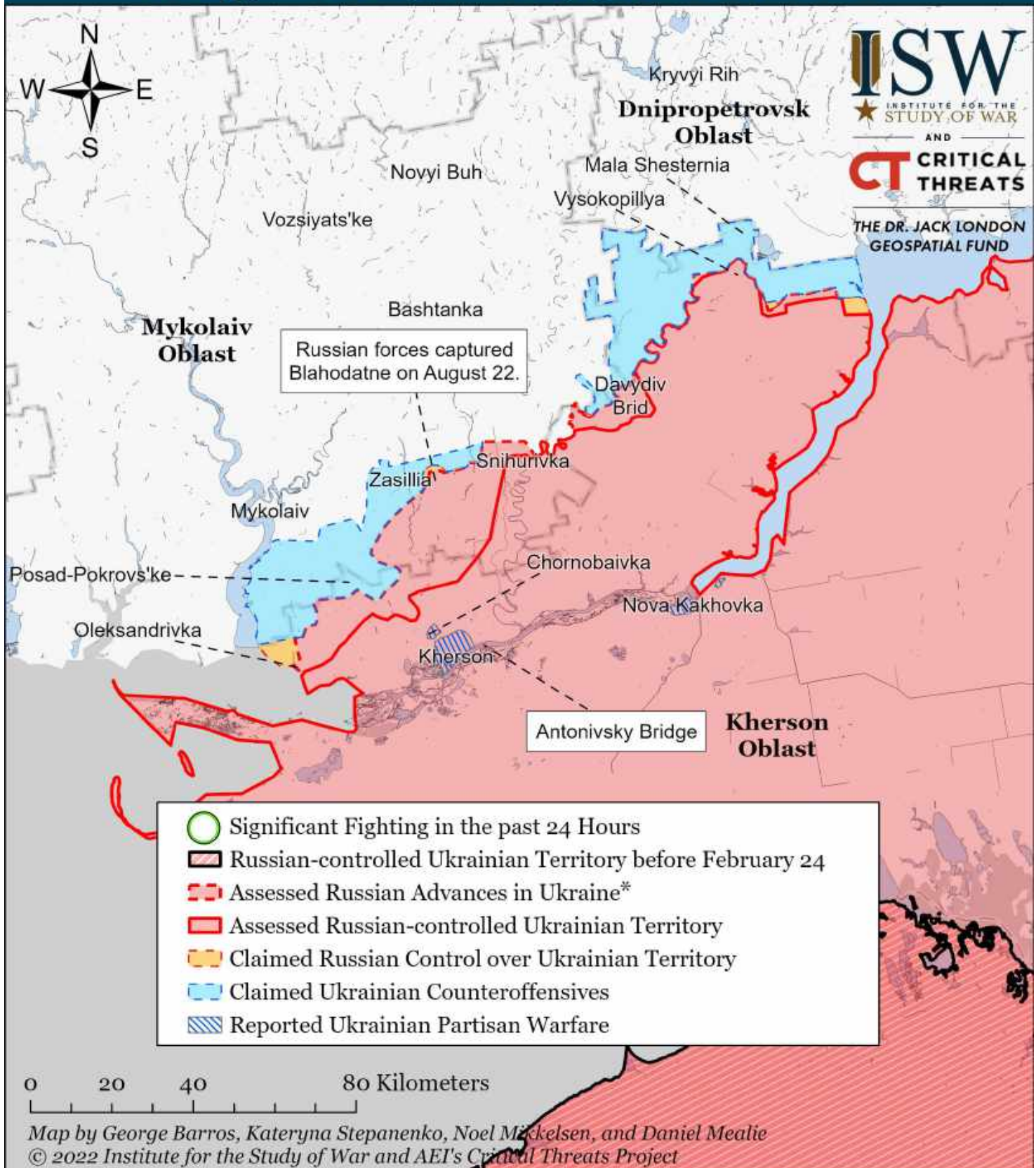
Assessed Control of Terrain Around Kherson and Mykolaiv as of August 29, 2022, 3:00 PM ET



* Assessed Russian advances are areas where ISW assesses Russian forces have operated in or launched attacks against but do not control.

Note: Ukrainian officials announced on August 29 that Ukrainian forces began a counteroffensive in Kherson Oblast. An unnamed military official of an unspecified country told CNN on August 29 that Ukrainian forces liberated Pravdyne, Nova Dmytrivka, and Tomya Balka (northwest of Kherson City) and Arkhanhelske (along the Inhulets River). ISW will readjust the maps when more open sources confirm the liberation of these settlements. ISW extended Ukrainian counteroffensives to Sukhyi Stavok based on several claims from Russian milbloggers that Ukrainian forces liberated the settlement on August 29.

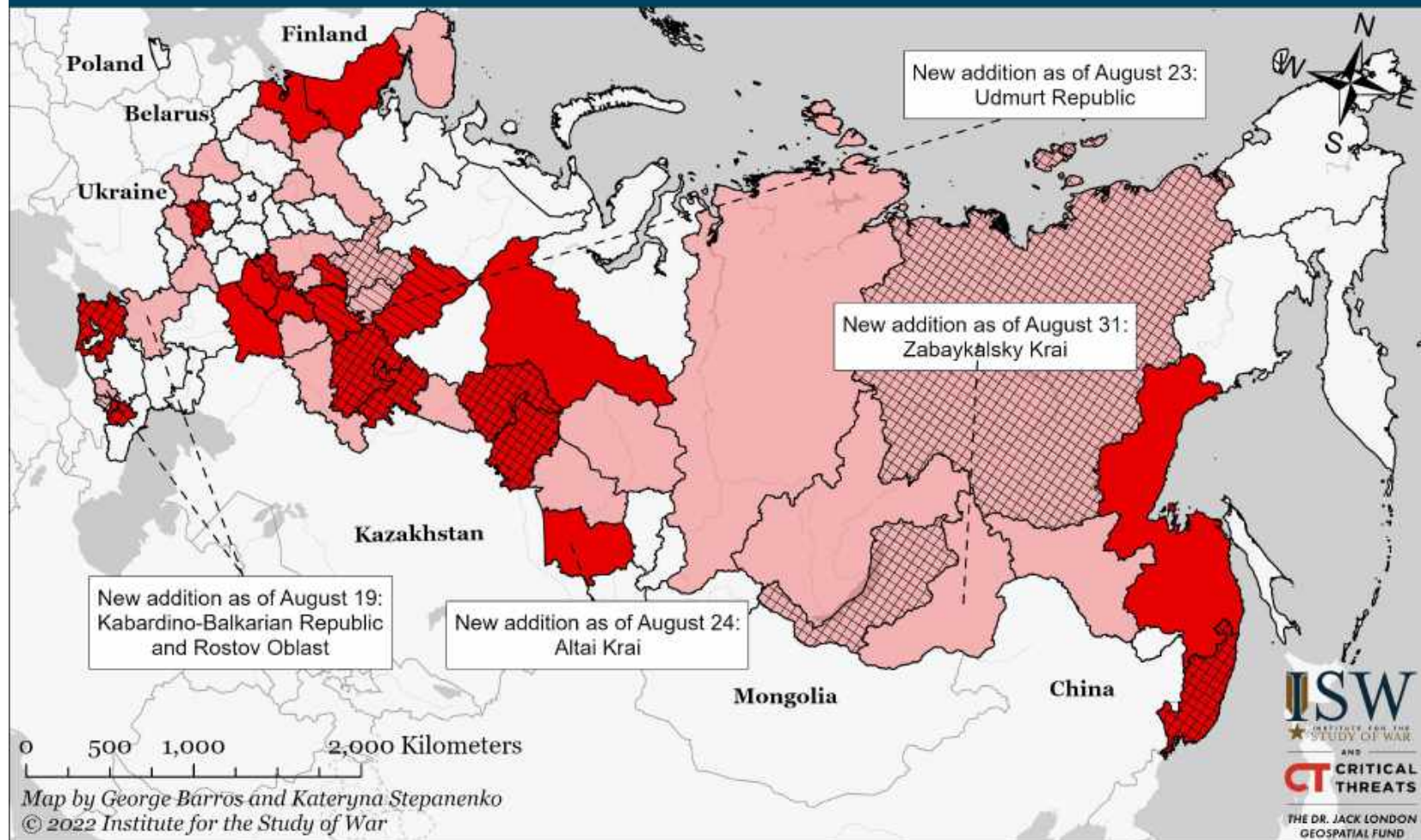
Assessed Control of Terrain Around Kherson and Mykolaiv as of August 28, 2022, 3:00 PM ET



* Assessed Russian advances are areas where ISW assesses Russian forces have operated in or launched attacks against but do not control.

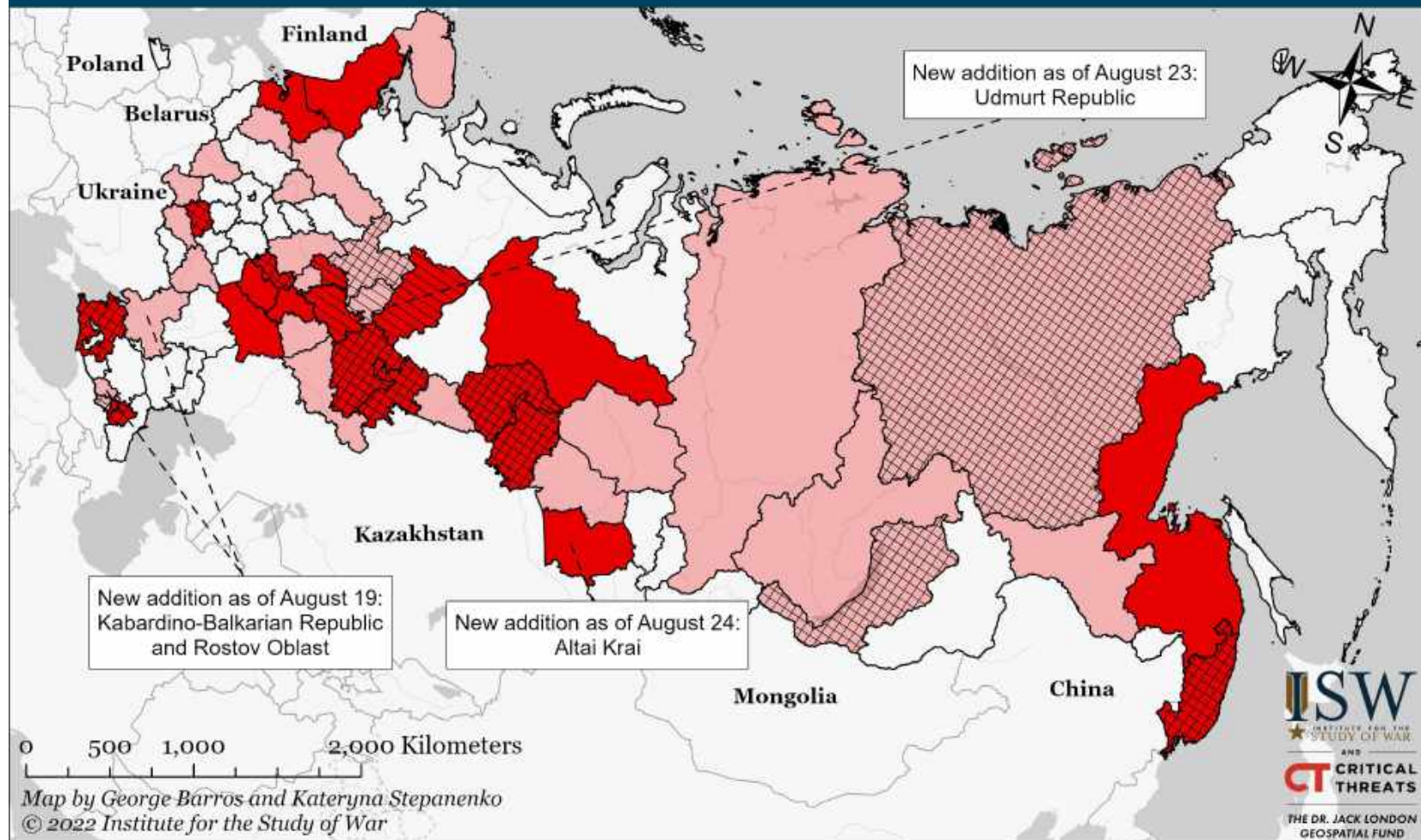
Note: ISW recessed Russian control of terrain around Snihurivka further south based on a geolocated footage published on August 20 that showed four Ukrainian servicemen conducting a raid in the northern part of the settlement. Kherson Oblast Administration Head Dmytro Butriy reported on August 2 that Ukrainian forces liberated an additional seven unnamed villages in Kherson Oblast. ISW will continue to monitor the situation and will update our maps when open sources name the liberated settlements.

Confirmed Russian Regions (Federal Subjects) Generating "Volunteer" Units to Fight in Ukraine as of August 31, 2022



- | | |
|---|---|
| Federal Subject Contributing or Generating a Unit | Unit or Element Deployed to a Training Ground before Deployment to Ukraine |
| Federal Subject Contributing or Generating Multiple Units | Unit or Element Deployed to Ukraine |

Confirmed Russian Regions (Federal Subjects) Generating "Volunteer" Units to Fight in Ukraine as of August 30, 2022



- | | |
|---|---|
| Federal Subject Contributing or Generating a Unit | Unit or Element Deployed to a Training Ground before Deployment to Ukraine |
| Federal Subject Contributing or Generating Multiple Units | Unit or Element Deployed to Ukraine |