

Assessed Control of Terrain in Ukraine and Main Russian Maneuver Axes as of September 6, 2022, 3:00 PM ET



Map by George Barros, Kateryna Stepanenko, Noel Mikkelsen, and Daniel Mealie
© 2022 Institute for the Study of War and AEI's Critical Threats Project

* Assessed Russian advances are areas where ISW assesses Russian forces have operated in or launched attacks against but do not control.

Assessed Control of Terrain in Ukraine and Main Russian Maneuver Axes as of September 5, 2022, 3:00 PM ET



Map by George Barros, Kateryna Stepanenko, Noel Mikkelsen, and Daniel Mealie
© 2022 Institute for the Study of War and AEI's Critical Threats Project

* Assessed Russian advances are areas where ISW assesses Russian forces have operated in or launched attacks against but do not control.

Assessed Control of Terrain in Ukraine and Main Russian Maneuver Axes as of September 4, 2022, 3:00 PM ET



Map by George Barros, Kateryna Stepanenko, Noel Mikkelsen, and Daniel Mealie
© 2022 Institute for the Study of War and AEI's Critical Threats Project

* Assessed Russian advances are areas where ISW assesses Russian forces have operated in or launched attacks against but do not control.

Assessed Control of Terrain in Ukraine and Main Russian Maneuver Axes as of September 3, 2022, 3:00 PM ET



Map by George Barros, Kateryna Stepanenko, Noel Mikkelsen, and Daniel Mealie
© 2022 Institute for the Study of War and AEI's Critical Threats Project

* Assessed Russian advances are areas where ISW assesses Russian forces have operated in or launched attacks against but do not control.

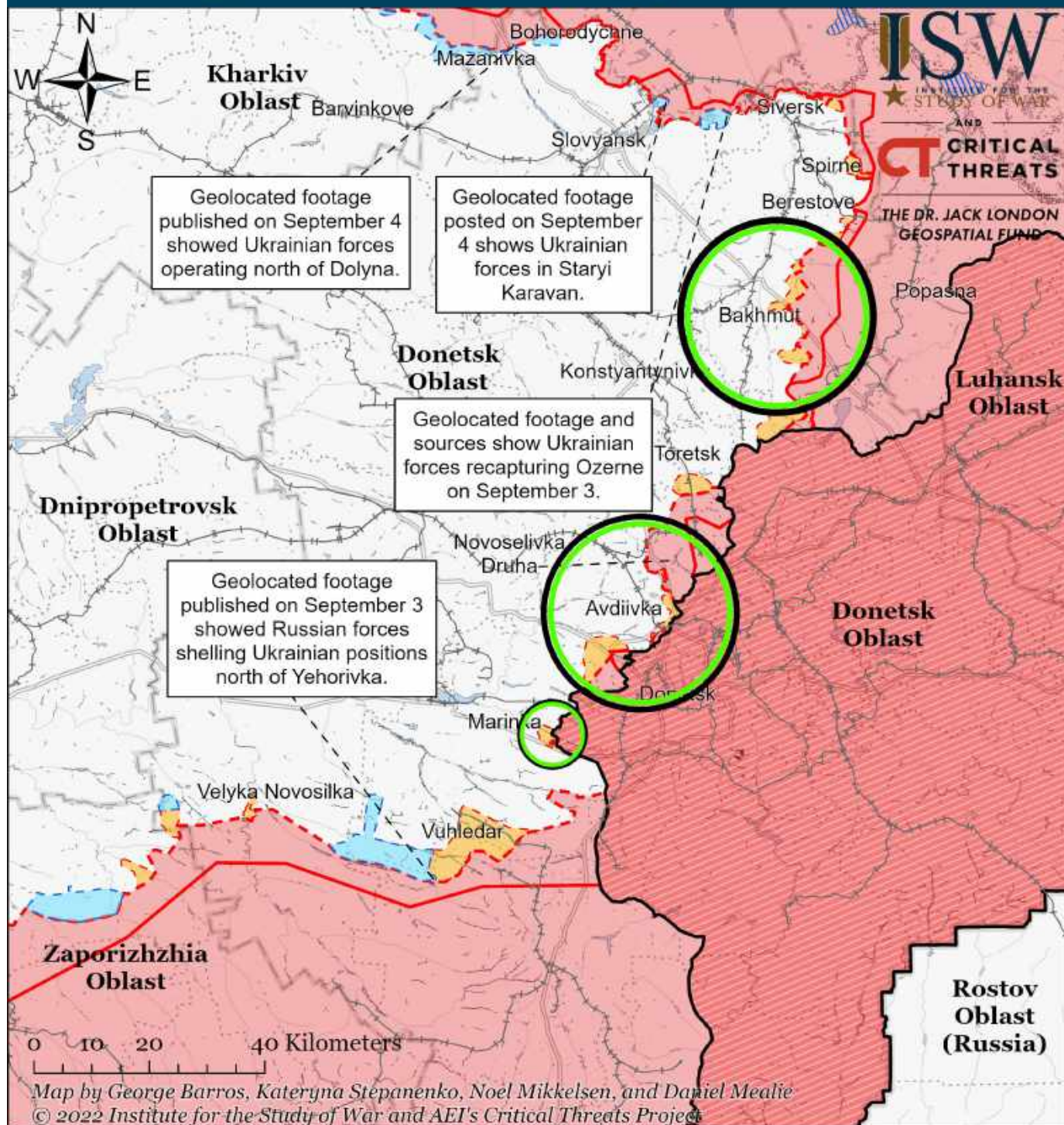
Assessed Control of Terrain in Ukraine and Main Russian Maneuver Axes as of September 2, 2022, 3:00 PM ET



Map by George Barros, Kateryna Stepanenko, Noel Mikkelsen, and Daniel Mealie
© 2022 Institute for the Study of War and AEI's Critical Threats Project

* Assessed Russian advances are areas where ISW assesses Russian forces have operated in or launched attacks against but do not control.

Assessed Control of Terrain Around Donetsk as of September 6, 2022, 3:00 PM ET

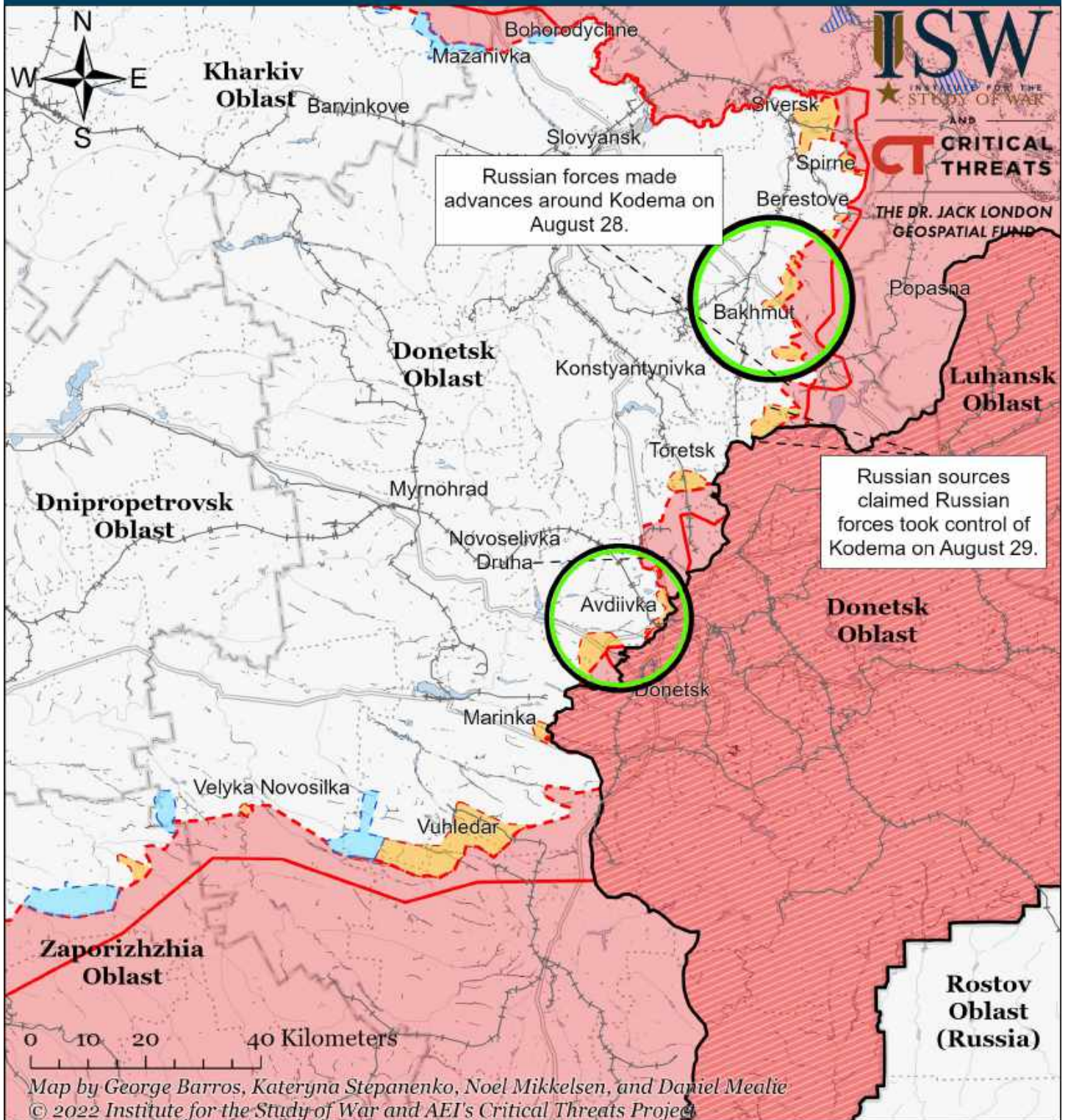


- Significant Fighting in the past 24 Hours
- Assessed Russian-controlled Ukrainian Territory
- Reported Ukrainian Partisan Warfare
- Russian-controlled Ukrainian Territory before February 24
- Claimed Russian Control over Ukrainian Territory
- Major Railroads
- Assessed Russian Advances in Ukraine*
- Claimed Ukrainian Counteroffensives

* Assessed Russian advances are areas where ISW assesses Russian forces have operated in or launched attacks against but do not control.

Note: ISW recessed assessed Russian advances to a poultry farm in eastern Verkhokamyanske, Donetsk Oblast, and recessed Russian claimed control layer around Siversk based on geolocated footage published on September 5 that shows Russian forces targeting Ukrainian positions at the poultry farm.

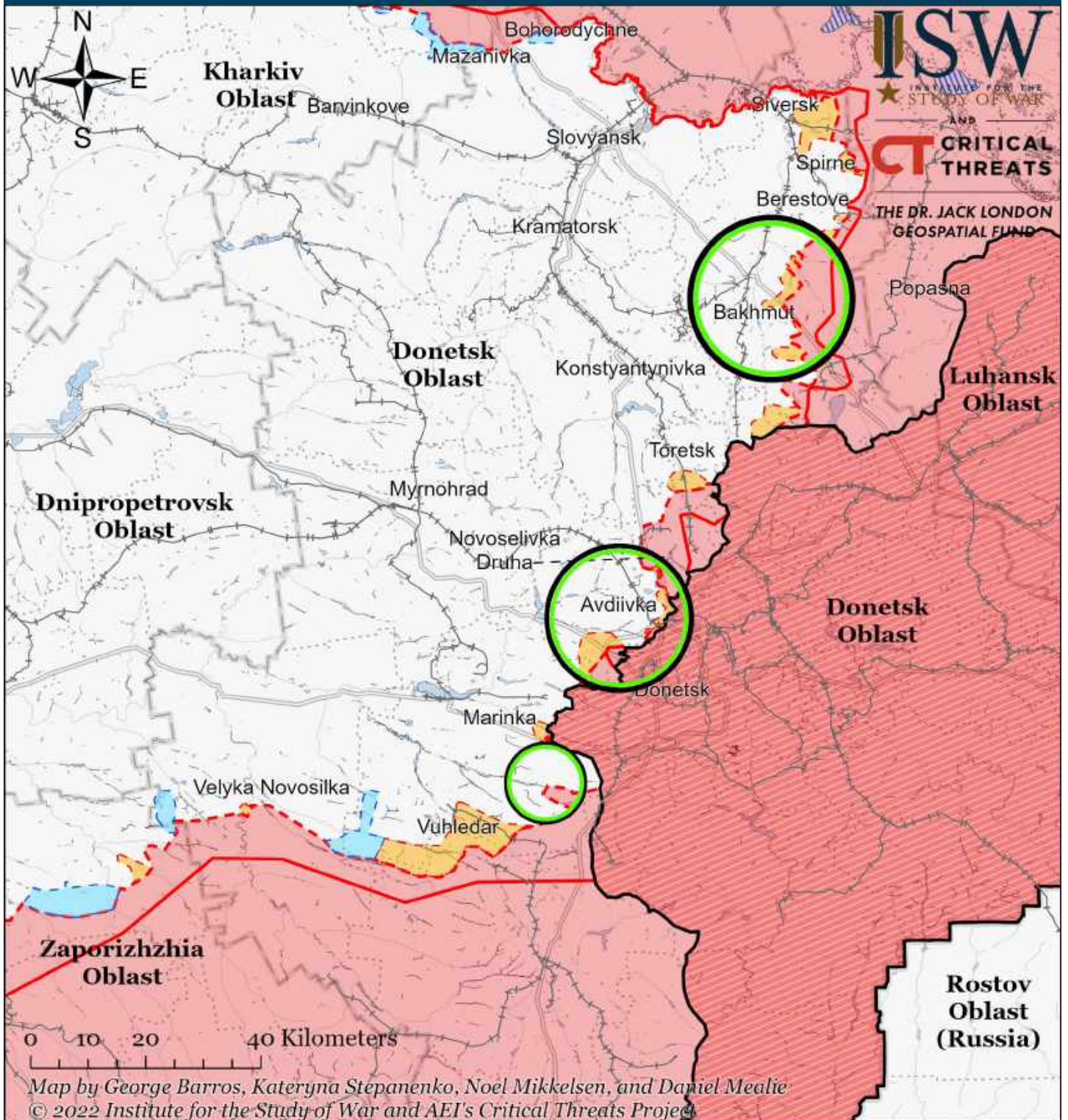
Assessed Control of Terrain Around Donetsk as of September 2, 2022, 3:00 PM ET



- Significant Fighting in the past 24 Hours
- Assessed Russian-controlled Ukrainian Territory
- Reported Ukrainian Partisan Warfare
- Russian-controlled Ukrainian Territory before February 24
- Claimed Russian Control over Ukrainian Territory
- Major Railroads
- - - Assessed Russian Advances in Ukraine*
- Claimed Ukrainian Counteroffensives

* Assessed Russian advances are areas where ISW assesses Russian forces have operated in or launched attacks against but do not control.

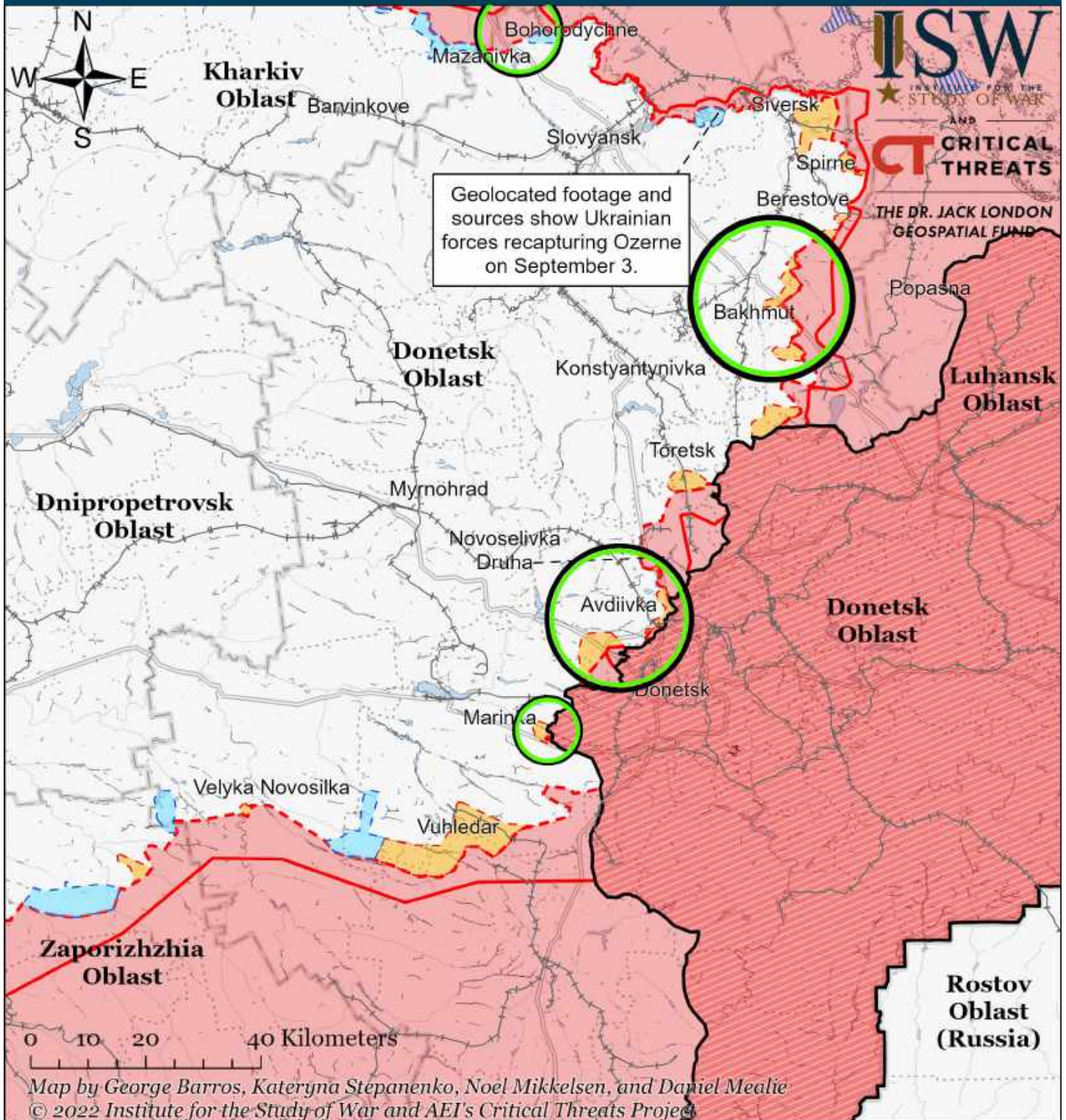
Assessed Control of Terrain Around Donetsk as of September 3, 2022, 3:00 PM ET



- Significant Fighting in the past 24 Hours
- Assessed Russian-controlled Ukrainian Territory
- Russian-controlled Ukrainian Territory before February 24
- Claimed Russian Control over Ukrainian Territory
- Assessed Russian Advances in Ukraine*
- Claimed Ukrainian Counteroffensives
- Reported Ukrainian Partisan Warfare
- Major Railroads

* Assessed Russian advances are areas where ISW assesses Russian forces have operated in or launched attacks against but do not control.

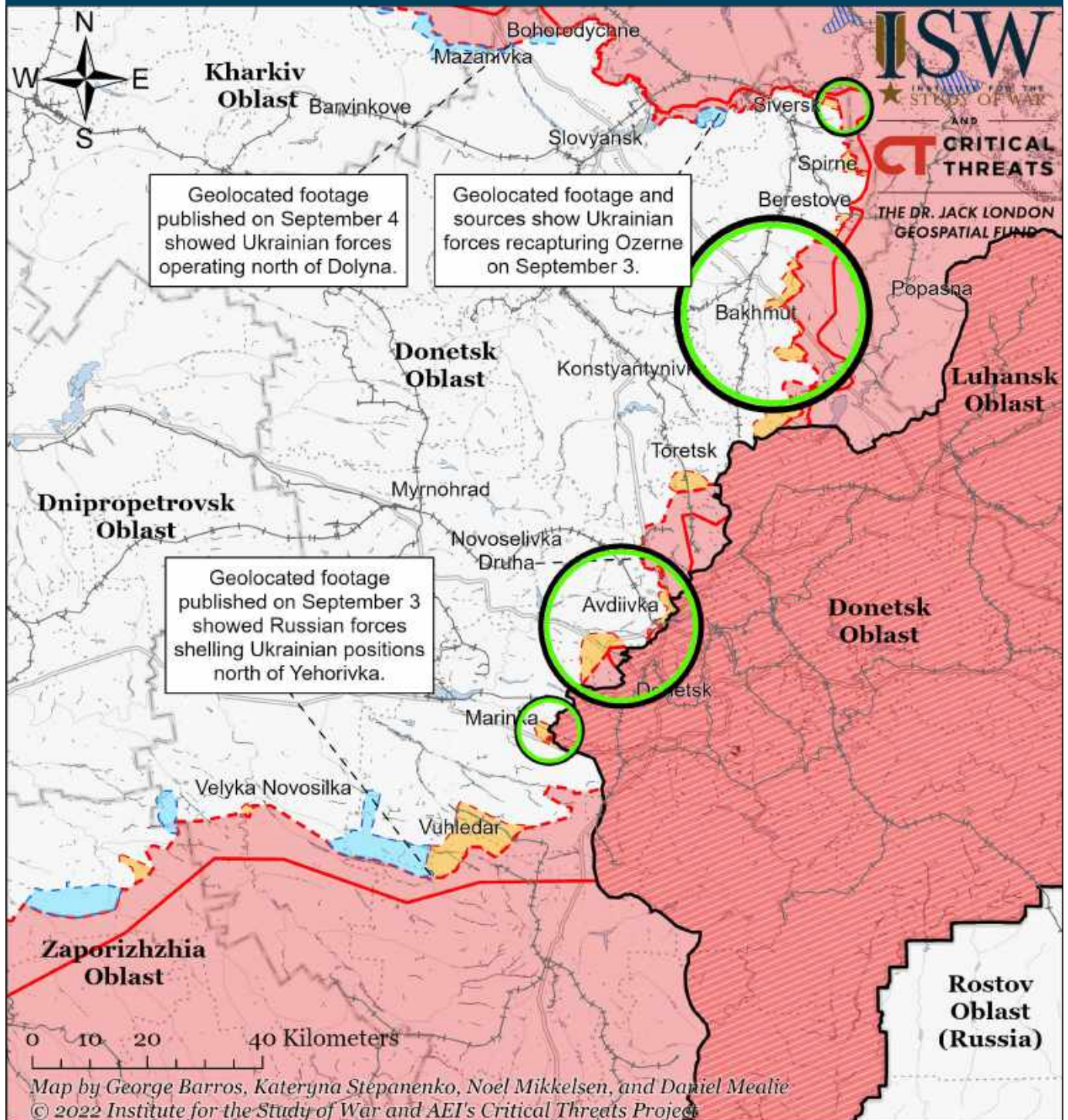
Assessed Control of Terrain Around Donetsk as of September 4, 2022, 3:00 PM ET



- Significant Fighting in the past 24 Hours
- Assessed Russian-controlled Ukrainian Territory
- Reported Ukrainian Partisan Warfare
- Russian-controlled Ukrainian Territory before February 24
- Claimed Russian Control over Ukrainian Territory
- Assessed Russian Advances in Ukraine*
- Claimed Ukrainian Counteroffensives
- Major Railroads

* Assessed Russian advances are areas where ISW assesses Russian forces have operated in or launched attacks against but do not control.

Assessed Control of Terrain Around Donetsk as of September 5, 2022, 3:00 PM ET

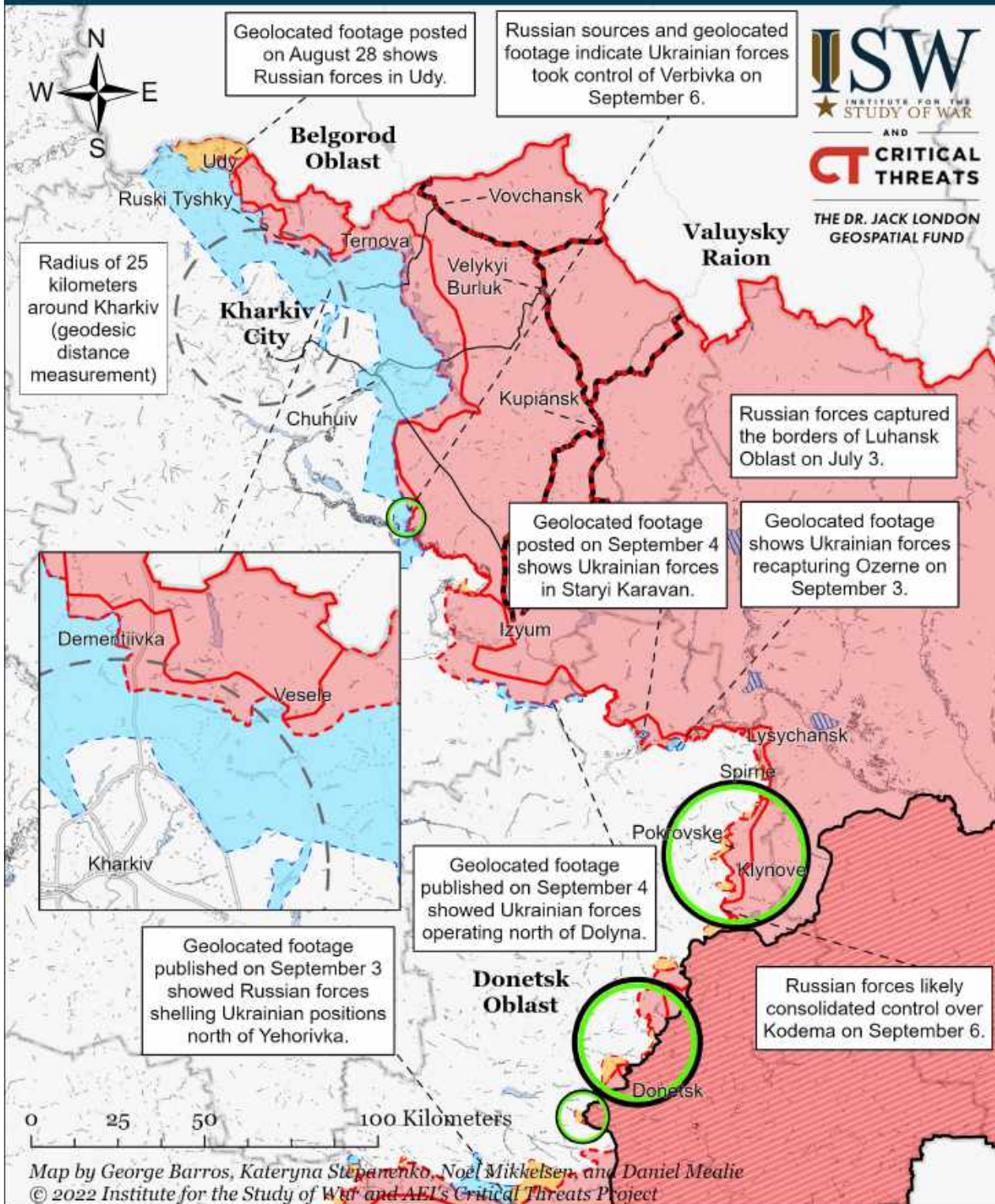


- Significant Fighting in the past 24 Hours
- Assessed Russian-controlled Ukrainian Territory
- Reported Ukrainian Partisan Warfare
- Russian-controlled Ukrainian Territory before February 24
- Claimed Russian Control over Ukrainian Territory
- Assessed Russian Advances in Ukraine*
- Claimed Ukrainian Counteroffensives
- Major Railroads

* Assessed Russian advances are areas where ISW assesses Russian forces have operated in or launched attacks against but do not control.

Note: ISW recessed assessed Russian advances to a poultry farm in eastern Verkhokamyanske, Donetsk Oblast, and recessed Russian claimed control layer around Siversk based on geolocated footage published on September 5 that shows Russian forces targeting Ukrainian positions at the poultry farm.

Assessed Control of Terrain Around Kharkiv as of September 6, 2022, 3:00 PM ET



Significant Fighting in the past 24 Hours

Key Ukrainian Roads

Russian Ground Lines of Communication

Russian-controlled Ukrainian Territory before February 24

Assessed Russian Advances in Ukraine*

Assessed Russian-controlled Ukrainian Territory

Claimed Russian Control over Ukrainian Territory

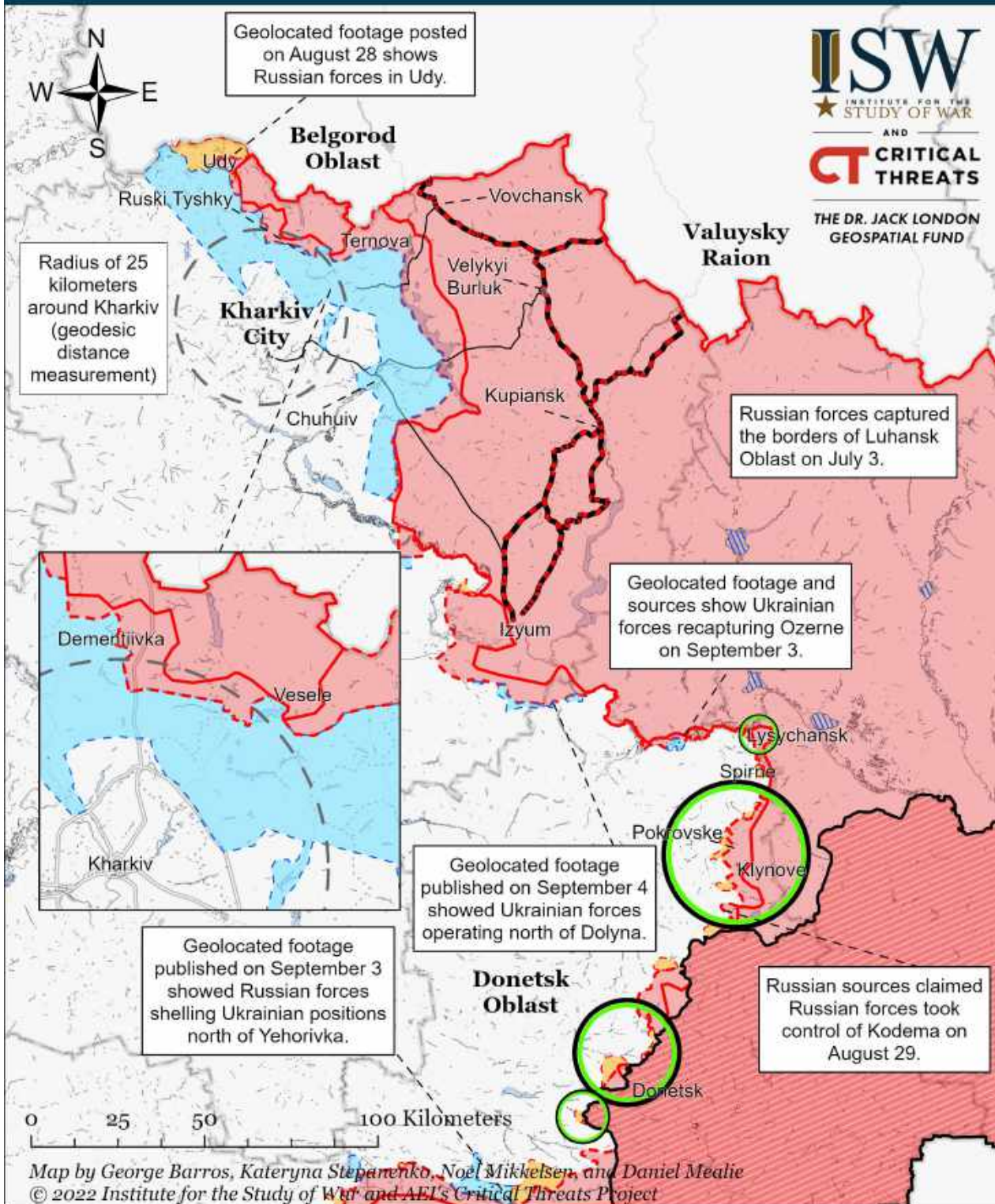
Claimed Ukrainian Counteroffensives

Reported Ukrainian Partisan Warfare

* Assessed Russian advances are areas where ISW assesses Russian forces have operated in or launched attacks against but do not control.

Note: ISW recessed Russian-controlled territory around Pasika based on a Ukrainian General Staff report that Ukrainian forces repelled a Russian assault in the area on September 4. ISW will adjust our maps once more information on Pasika becomes available.

Assessed Control of Terrain Around Kharkiv as of September 5, 2022, 3:00 PM ET



○ Significant Fighting in the past 24 Hours

— Key Ukrainian Roads

— Russian Ground Lines of Communication

▬ Russian-controlled Ukrainian Territory before February 24

▬ Assessed Russian Advances in Ukraine*

▬ Assessed Russian-controlled Ukrainian Territory

▬ Claimed Russian Control over Ukrainian Territory

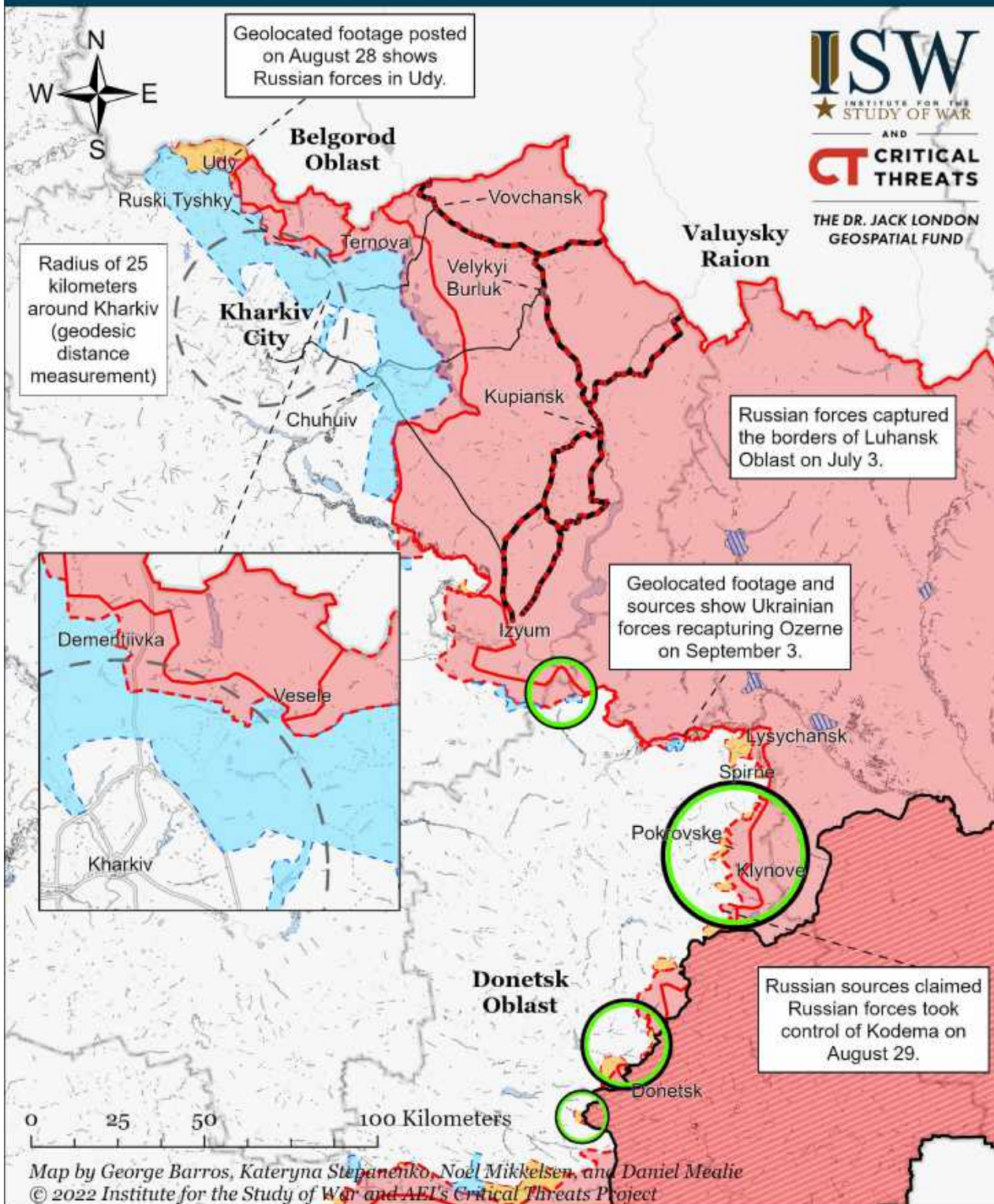
▬ Claimed Ukrainian Counteroffensives

▬ Reported Ukrainian Partisan Warfare

* Assessed Russian advances are areas where ISW assesses Russian forces have operated in or launched attacks against but do not control.

Note: ISW recessed Russian-controlled territory around Pasika based on a Ukrainian General Staff report that Ukrainian forces repelled a Russian assault in the area on September 4. ISW will adjust our maps once more information on Pasika becomes available.

Assessed Control of Terrain Around Kharkiv as of September 4, 2022, 3:00 PM ET



○ Significant Fighting in the past 24 Hours

— Key Ukrainian Roads

— Russian Ground Lines of Communication

■ Russian-controlled Ukrainian Territory before February 24

■ Assessed Russian Advances in Ukraine*

■ Assessed Russian-controlled Ukrainian Territory

■ Claimed Russian Control over Ukrainian Territory

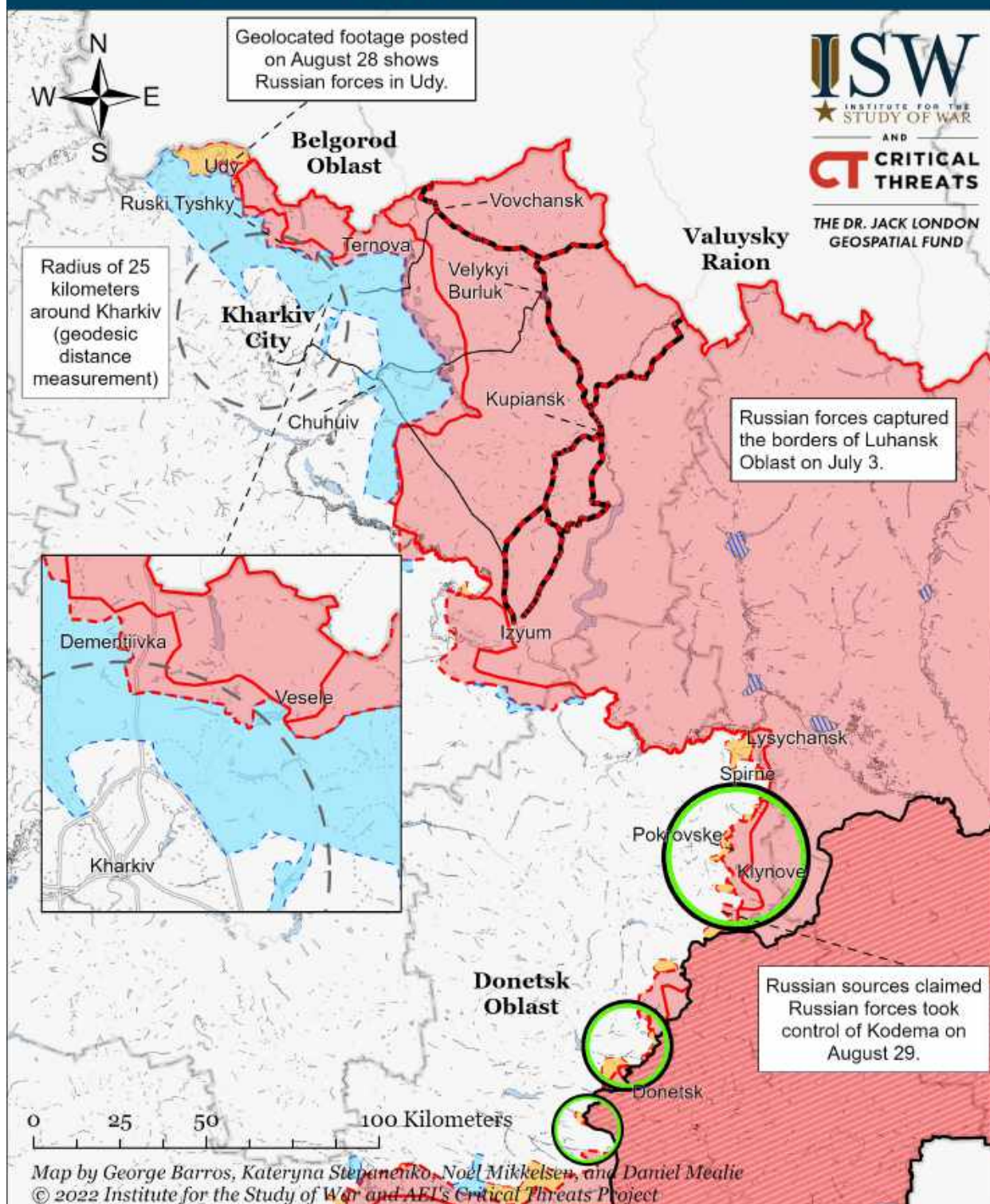
■ Claimed Ukrainian Counteroffensives

■ Reported Ukrainian Partisan Warfare

* Assessed Russian advances are areas where ISW assesses Russian forces have operated in or launched attacks against but do not control.

Note: ISW recessed Russian-controlled territory around Pasika based on a Ukrainian General Staff report that Ukrainian forces repelled a Russian assault in the area on September 4. ISW will adjust our maps once more information on Pasika becomes available.

Assessed Control of Terrain Around Kharkiv as of September 3, 2022, 3:00 PM ET

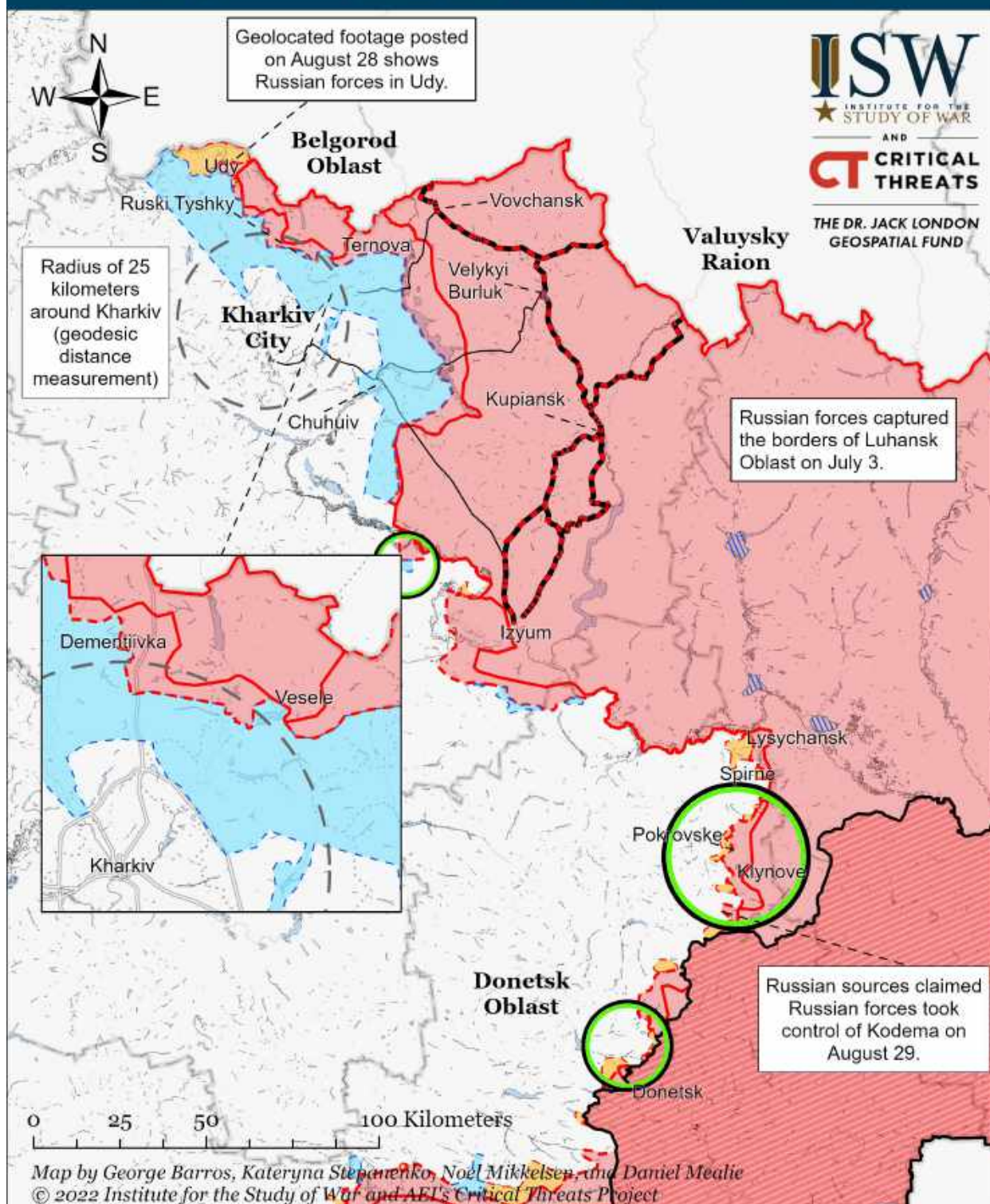


- | | | |
|---|---|--|
| Significant Fighting in the past 24 Hours | Russian-controlled Ukrainian Territory before February 24 | Claimed Russian Control over Ukrainian Territory |
| Key Ukrainian Roads | Assessed Russian Advances in Ukraine* | Claimed Ukrainian Counteroffensives |
| Russian Ground Lines of Communication | Assessed Russian-controlled Ukrainian Territory | Reported Ukrainian Partisan Warfare |

* Assessed Russian advances are areas where ISW assesses Russian forces have operated in or launched attacks against but do not control.

Note: ISW recessed assessed Russian advances north of Dolyna and Russian claims over Dolyna based on a geolocated video published on August 26 that shows Ukrainian forces freely operating in the settlement. ISW has recessed Russian assessed advances around Brazhkyvka based on a geolocated video published on August 29 showing Russian artillery striking the northwestern outskirts of the settlement.

Assessed Control of Terrain Around Kharkiv as of September 2, 2022, 3:00 PM ET



○ Significant Fighting in the past 24 Hours

— Key Ukrainian Roads

— Russian Ground Lines of Communication

■ Russian-controlled Ukrainian Territory before February 24

■ Assessed Russian Advances in Ukraine*

■ Assessed Russian-controlled Ukrainian Territory

■ Claimed Russian Control over Ukrainian Territory

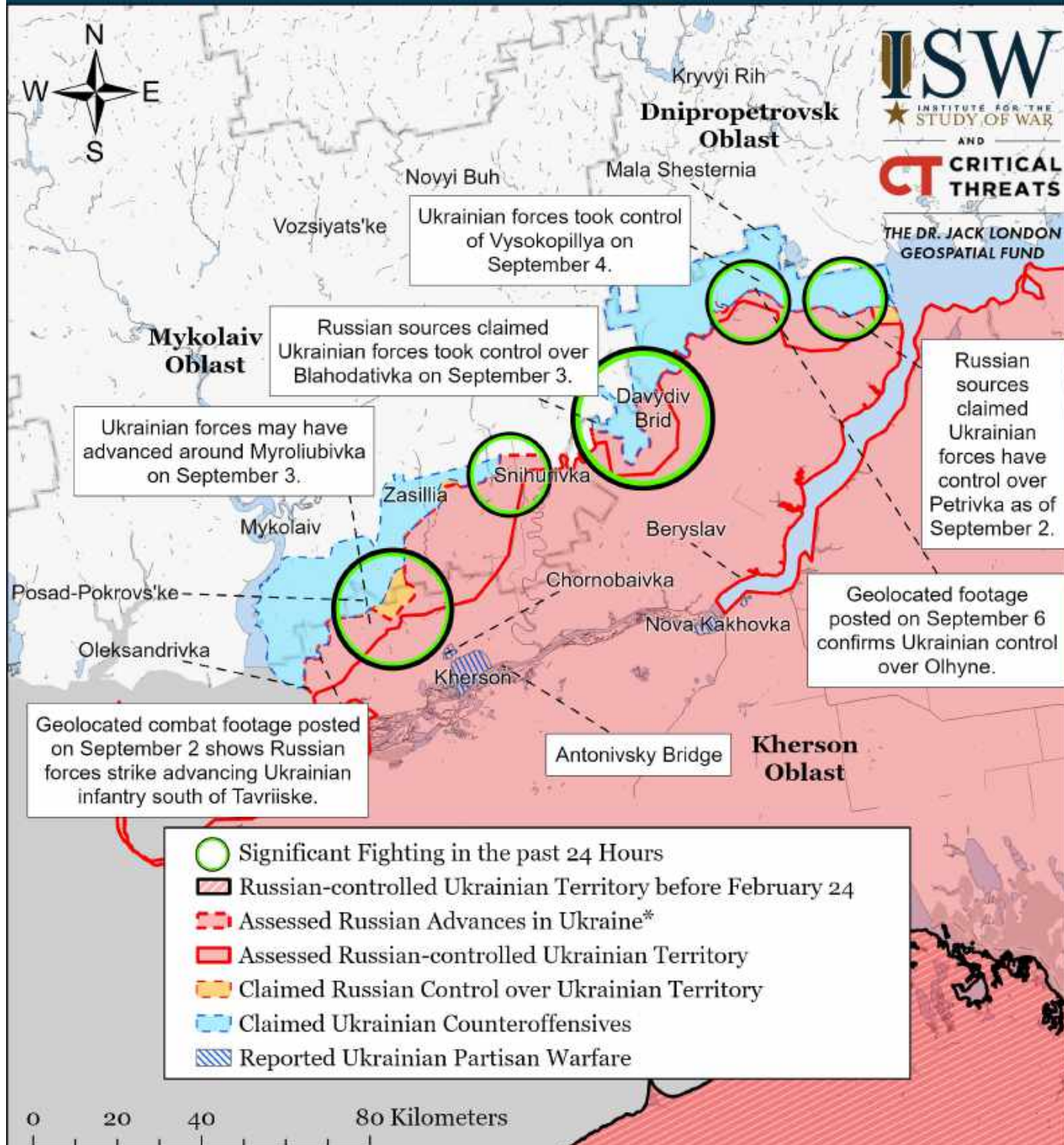
■ Claimed Ukrainian Counteroffensives

■ Reported Ukrainian Partisan Warfare

* Assessed Russian advances are areas where ISW assesses Russian forces have operated in or launched attacks against but do not control.

Note: ISW recessed assessed Russian advances north of Dolyna and Russian claims over Dolyna based on a geolocated video published on August 26 that shows Ukrainian forces freely operating in the settlement. ISW has recessed Russian assessed advances around Brazhivka based on a geolocated video published on August 29 showing Russian artillery striking the northwestern outskirts of the settlement.

Assessed Control of Terrain Around Kherson and Mykolaiv as of September 6, 2022, 3:00 PM ET

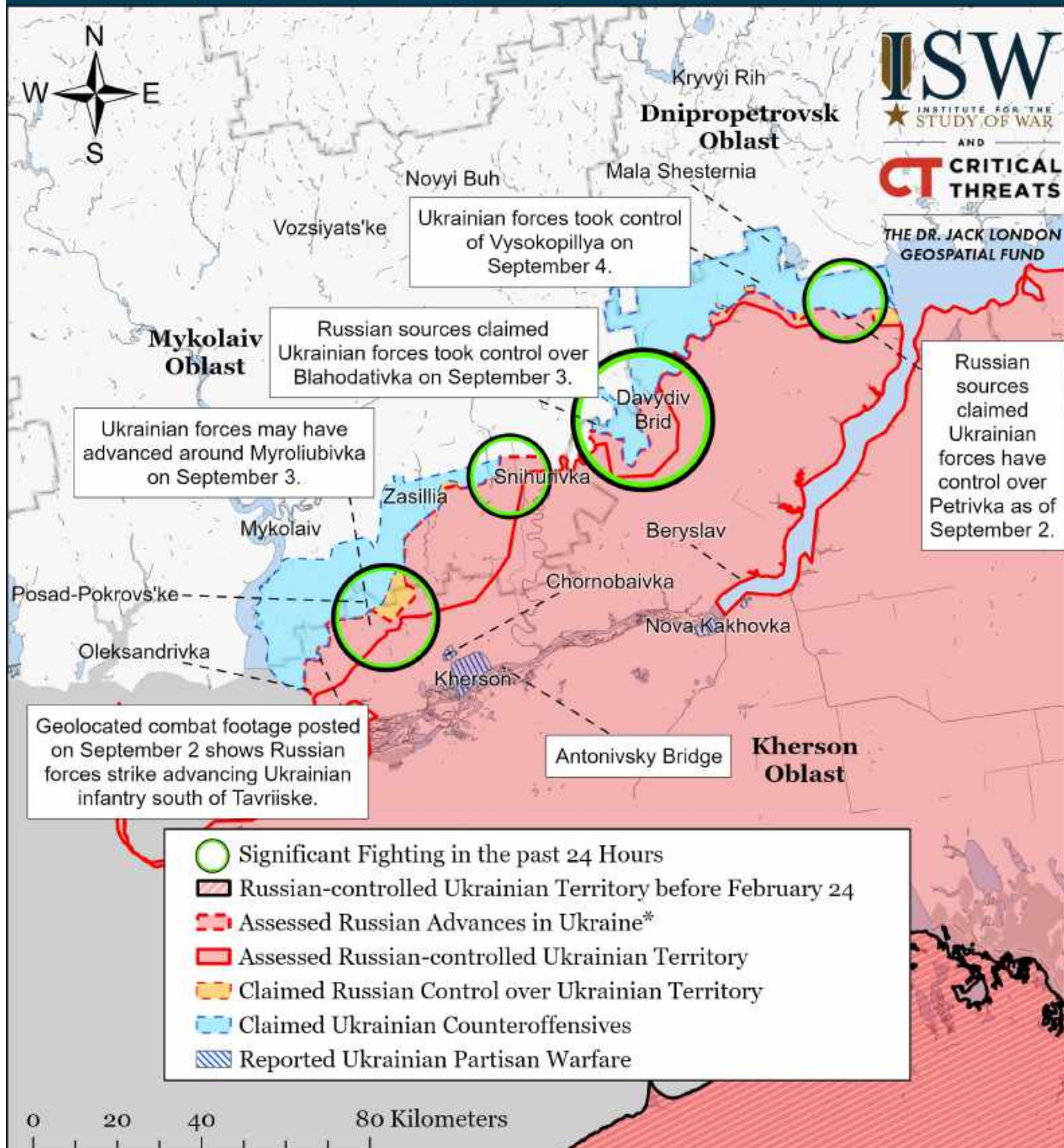


Map by George Barros, Kateryna Stepanenko, Noel Mikkelsen, and Daniel Mealie
© 2022 Institute for the Study of War and AEI's Critical Threats Project

* Assessed Russian advances are areas where ISW assesses Russian forces have operated in or launched attacks against but do not control.

Note: Ukrainian officials announced on August 29 that Ukrainian forces began a counteroffensive in Kherson Oblast. An unnamed military official of an unspecified country told CNN on August 29 that Ukrainian forces liberated Pravdyne, Nova Dmytrivka, and Tomyrna Balka (northwest of Kherson City) and Arkhanhelske (along the Inhulets River). ISW will readjust the maps when more open sources confirm the liberation of these settlements. ISW extended Ukrainian counteroffensives to Sukhyi Stavok based on several claims from Russian milbloggers that Ukrainian forces liberated the settlement on August 29. Russian sources claimed that Russian forces pushed Ukrainian forces back to Sukhyi Stavok from Kostromka and Bezimenne on September 3. The Ukrainian General Staff reported that Russian forces launched air strikes on Bezimenne and Kostromka on September 4, which may indicate a Ukrainian advance in the area.

Assessed Control of Terrain Around Kherson and Mykolaiv as of September 5, 2022, 3:00 PM ET

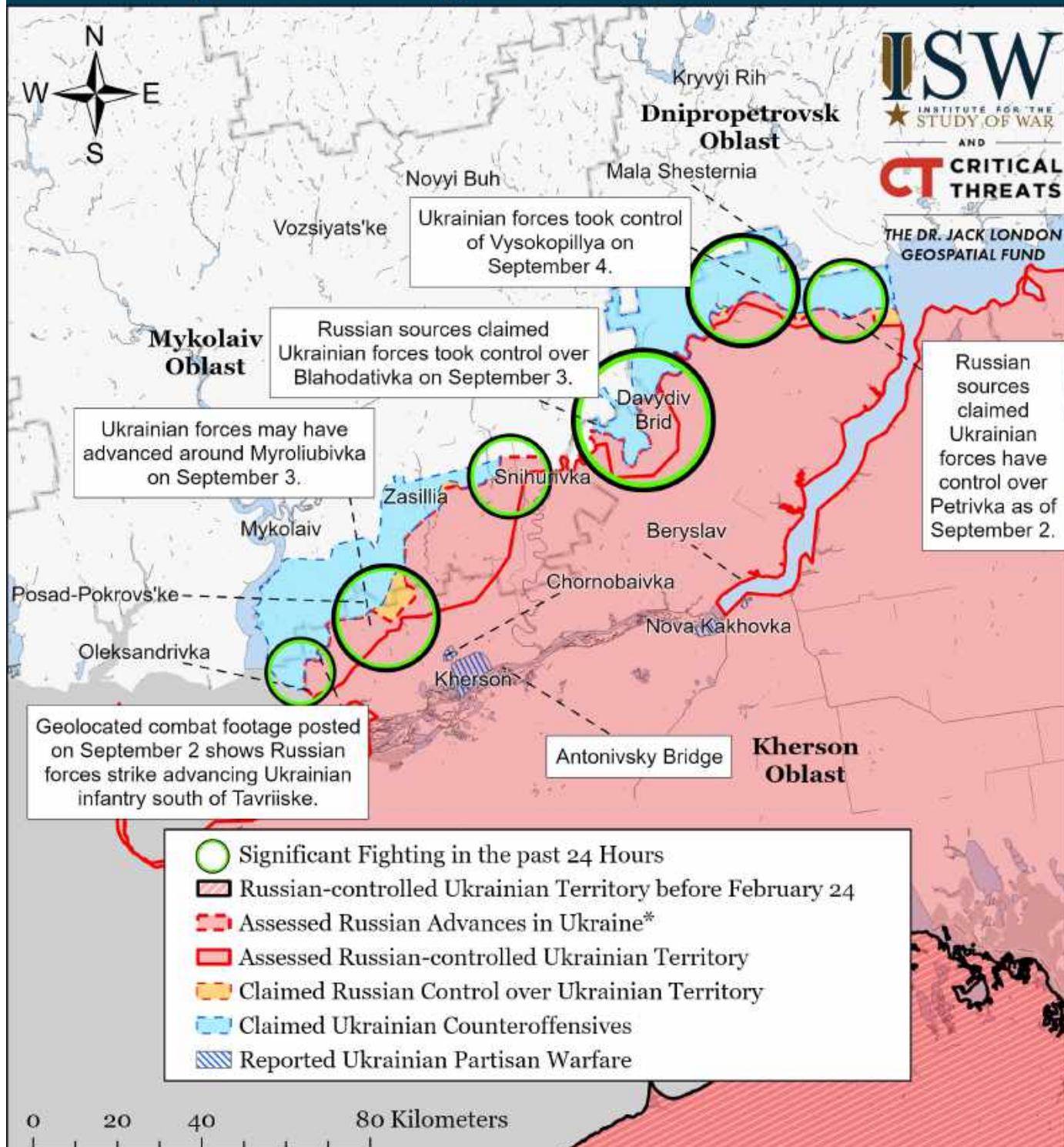


Map by George Barros, Kateryna Stepanenko, Noel Mikkelsen, and Daniel Mealie
© 2022 Institute for the Study of War and AEI's Critical Threats Project

* Assessed Russian advances are areas where ISW assesses Russian forces have operated in or launched attacks against but do not control.

Note: Ukrainian officials announced on August 29 that Ukrainian forces began a counteroffensive in Kherson Oblast. An unnamed military official of an unspecified country told CNN on August 29 that Ukrainian forces liberated Pravdyne, Nova Dmytrivka, and Tomyrna Balka (northwest of Kherson City) and Arkhanhelske (along the Inhulets River). ISW will readjust the maps when more open sources confirm the liberation of these settlements. ISW extended Ukrainian counteroffensives to Sukhyi Stavok based on several claims from Russian milbloggers that Ukrainian forces liberated the settlement on August 29. Russian sources claimed that Russian forces pushed Ukrainian forces back to Sukhyi Stavok from Kostromka and Bezimenne on September 3. The Ukrainian General Staff reported that Russian forces launched air strikes on Bezimenne and Kostromka on September 4, which may indicate a Ukrainian advance in the area.

Assessed Control of Terrain Around Kherson and Mykolaiv as of September 4, 2022, 3:00 PM ET

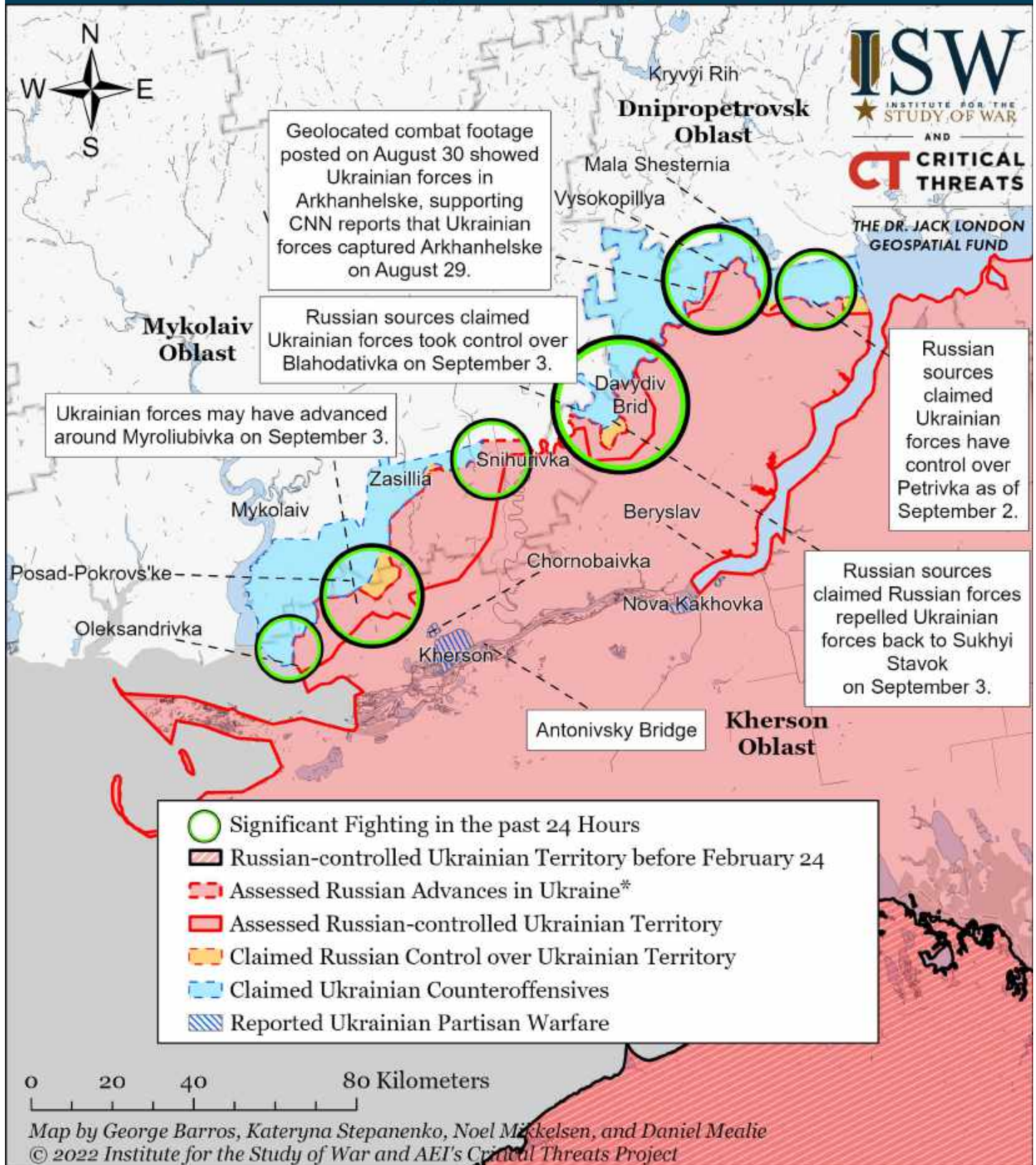


Map by George Barros, Kateryna Stepanenko, Noel Mikkelsen, and Daniel Mealie
© 2022 Institute for the Study of War and AEI's Critical Threats Project

* Assessed Russian advances are areas where ISW assesses Russian forces have operated in or launched attacks against but do not control.

Note: Ukrainian officials announced on August 29 that Ukrainian forces began a counteroffensive in Kherson Oblast. An unnamed military official of an unspecified country told CNN on August 29 that Ukrainian forces liberated Pravdyne, Nova Dmytrivka, and Tomyrna Balka (northwest of Kherson City) and Arkhanhelske (along the Inhulets River). ISW will readjust the maps when more open sources confirm the liberation of these settlements. ISW extended Ukrainian counteroffensives to Sukhyi Stavok based on several claims from Russian milbloggers that Ukrainian forces liberated the settlement on August 29. Russian sources claimed that Russian forces pushed Ukrainian forces back to Sukhyi Stavok from Kostromka and Bezimenne on September 3. The Ukrainian General Staff reported that Russian forces launched air strikes on Bezimenne and Kostromka on September 4, which may indicate a Ukrainian advance in the area.

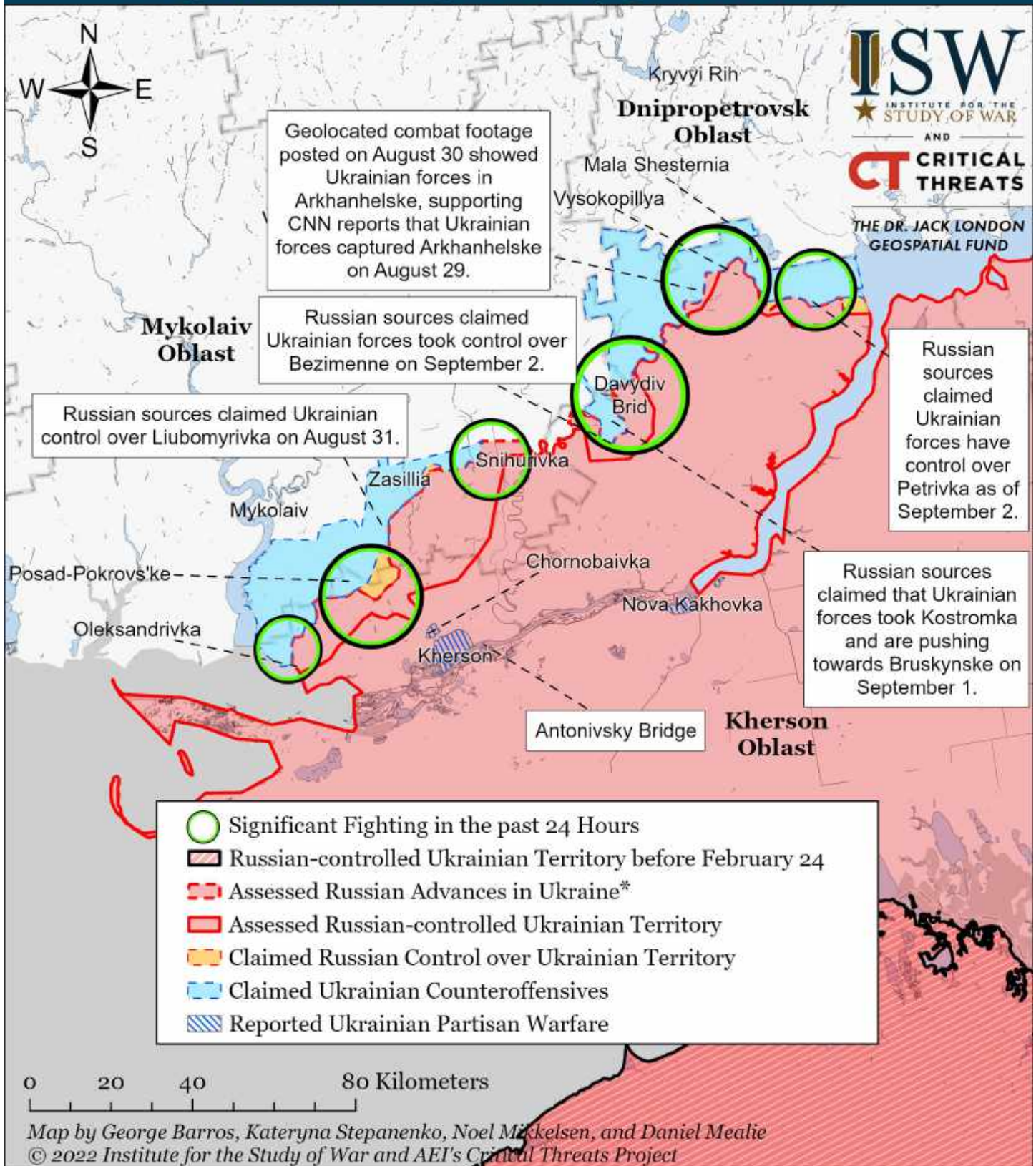
Assessed Control of Terrain Around Kherson and Mykolaiv as of September 3, 2022, 3:00 PM ET



* Assessed Russian advances are areas where ISW assesses Russian forces have operated in or launched attacks against but do not control.

Note: Ukrainian officials announced on August 29 that Ukrainian forces began a counteroffensive in Kherson Oblast. An unnamed military official of an unspecified country told CNN on August 29 that Ukrainian forces liberated Pravdyne, Nova Dmytrivka, and Tomya Balka (northwest of Kherson City) and Arkhanhelske (along the Inhulets River). ISW will readjust the maps when more open sources confirm the liberation of these settlements. ISW extended Ukrainian counteroffensives to Sukhyi Stavok based on several claims from Russian milbloggers that Ukrainian forces liberated the settlement on August 29.

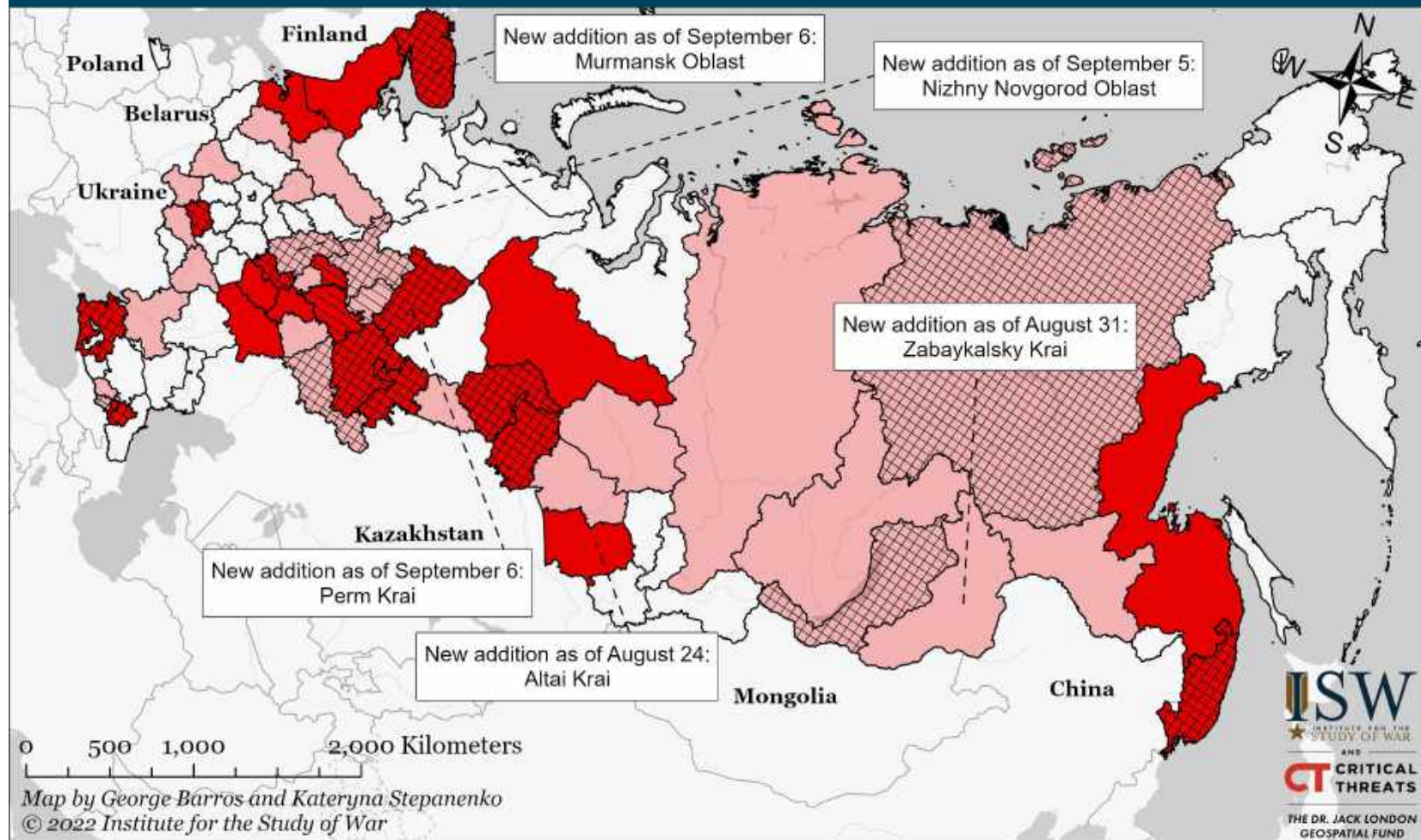
Assessed Control of Terrain Around Kherson and Mykolaiv as of September 2, 2022, 3:00 PM ET



* Assessed Russian advances are areas where ISW assesses Russian forces have operated in or launched attacks against but do not control.

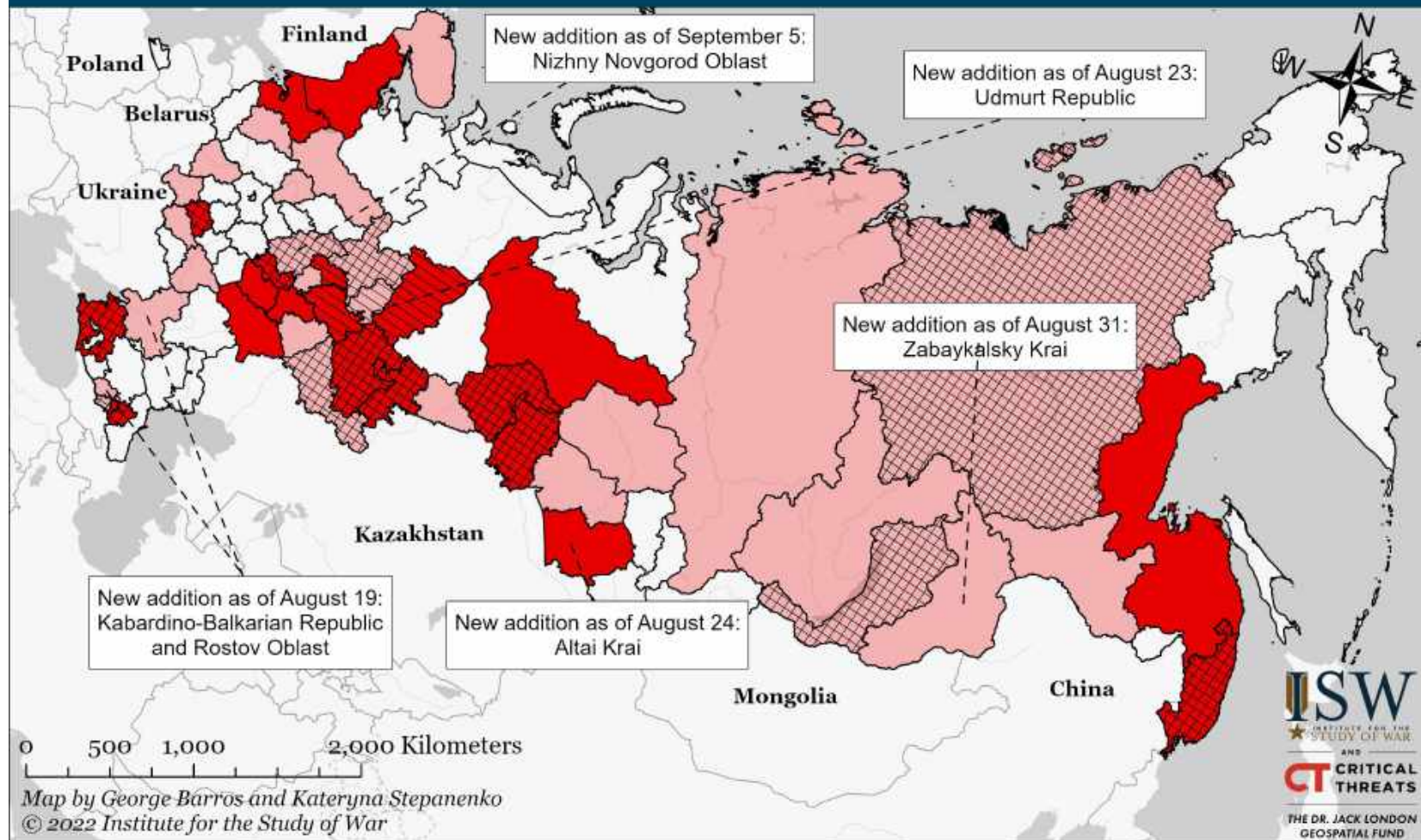
Note: Ukrainian officials announced on August 29 that Ukrainian forces began a counteroffensive in Kherson Oblast. An unnamed military official of an unspecified country told CNN on August 29 that Ukrainian forces liberated Pravdyne, Nova Dmytrivka, and Tomya Balka (northwest of Kherson City) and Arkhanhelske (along the Inhulets River). ISW will readjust the maps when more open sources confirm the liberation of these settlements. ISW extended Ukrainian counteroffensives to Sukhyi Stavok based on several claims from Russian milbloggers that Ukrainian forces liberated the settlement on August 29.

Confirmed Russian Regions (Federal Subjects) Generating "Volunteer" Units to Fight in Ukraine as of September 6, 2022



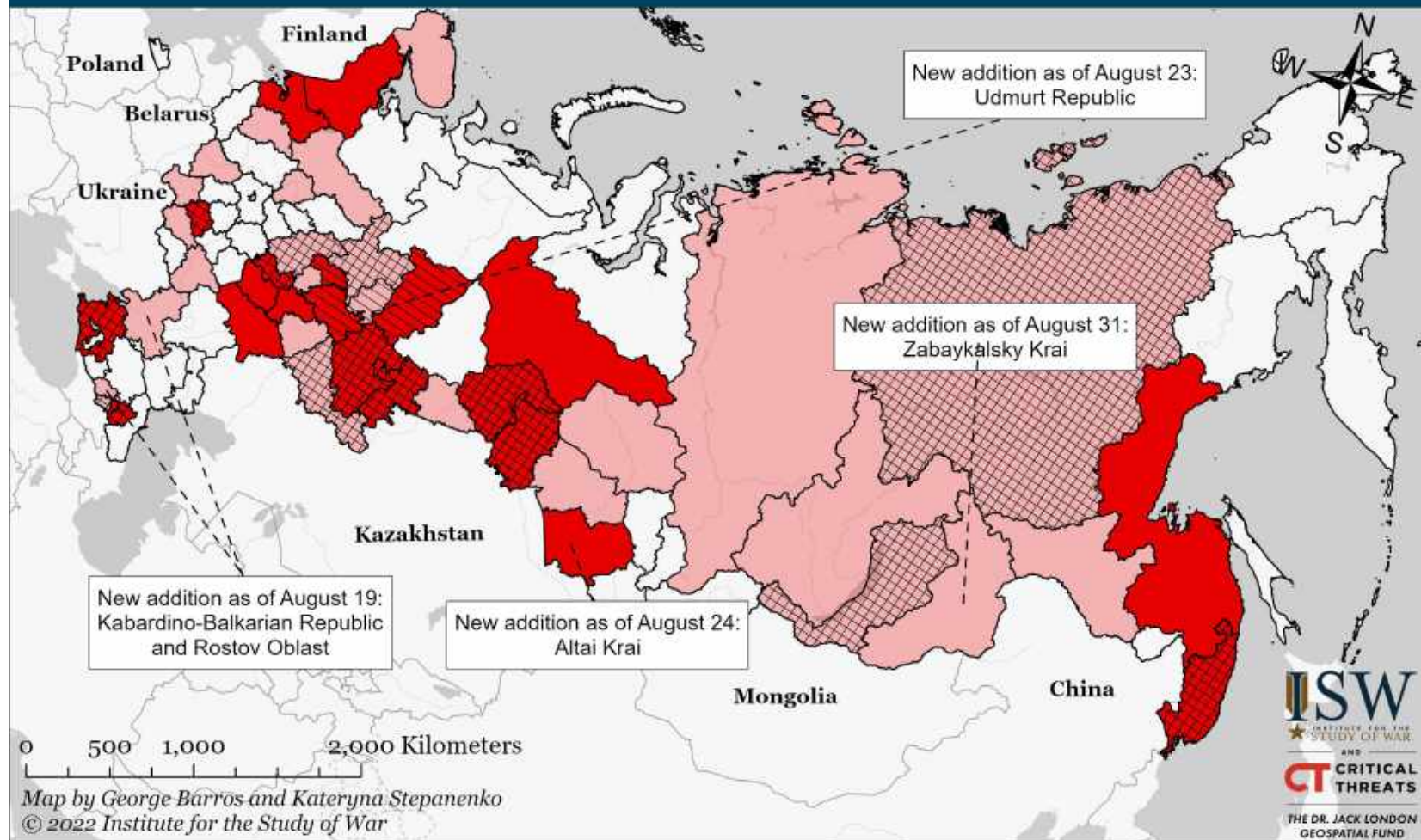
- | | |
|--|---|
| Federal Subject Contributing or Generating a Unit | Federal Subject Contributing or Generating Multiple Units |
| Unit or Element Deployed to a Training Ground before Deployment to Ukraine | Unit or Element Deployed to Ukraine |

Confirmed Russian Regions (Federal Subjects) Generating "Volunteer" Units to Fight in Ukraine as of September 5, 2022



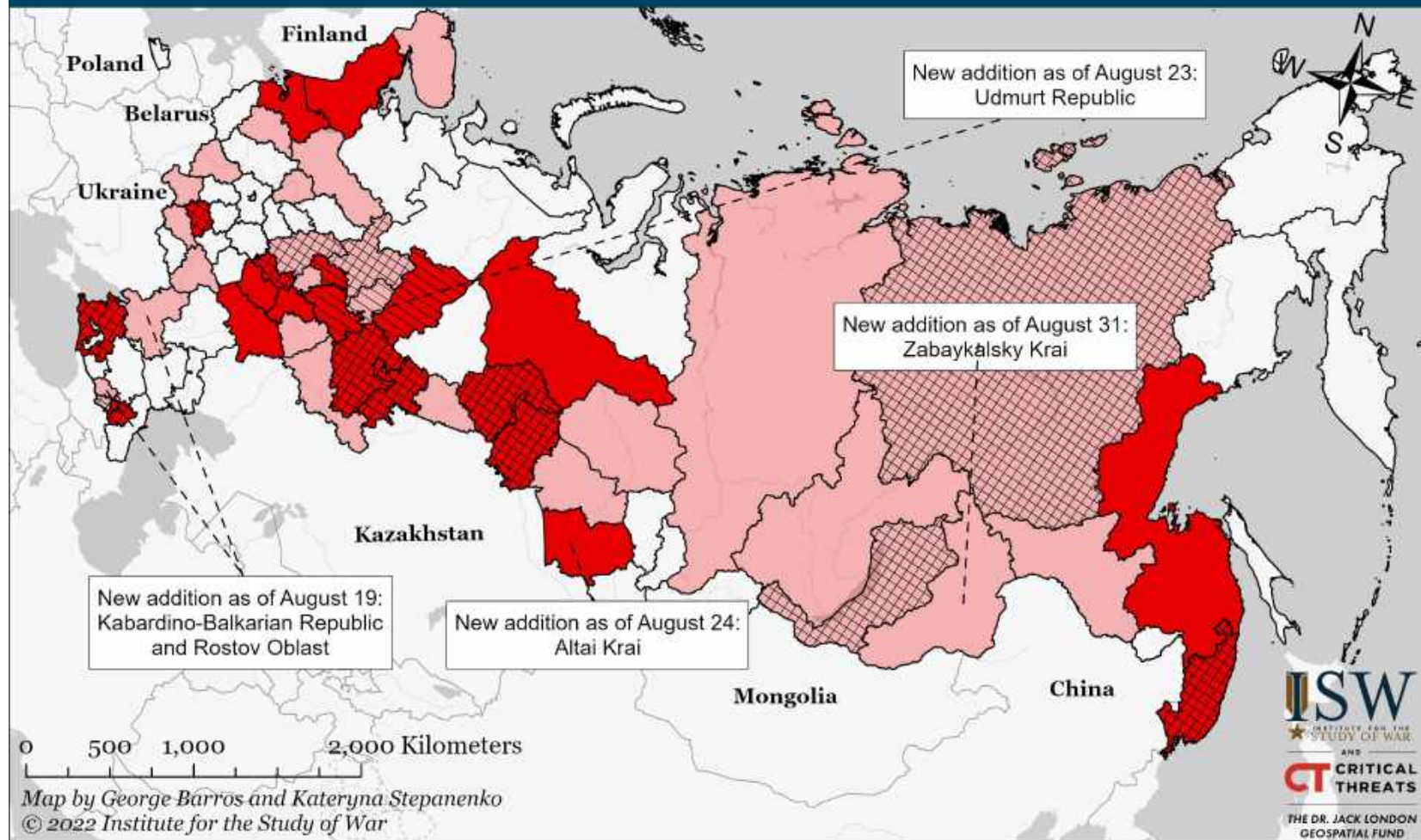
- | | |
|---|---|
| Federal Subject Contributing or Generating a Unit | Unit or Element Deployed to a Training Ground before Deployment to Ukraine |
| Federal Subject Contributing or Generating Multiple Units | Unit or Element Deployed to Ukraine |

Confirmed Russian Regions (Federal Subjects) Generating "Volunteer" Units to Fight in Ukraine as of September 3, 2022



- | | |
|---|--|
| Federal Subject Contributing or Generating a Unit | Unit or Element Deployed to a Training Ground before Deployment to Ukraine |
| Federal Subject Contributing or Generating Multiple Units | Unit or Element Deployed to Ukraine |

Confirmed Russian Regions (Federal Subjects) Generating "Volunteer" Units to Fight in Ukraine as of September 2, 2022



- | | |
|---|---|
| Federal Subject Contributing or Generating a Unit | Unit or Element Deployed to a Training Ground before Deployment to Ukraine |
| Federal Subject Contributing or Generating Multiple Units | Unit or Element Deployed to Ukraine |