

Assessed Control of Terrain in Ukraine and Main Russian Maneuver Axes as of October 11, 2022, 3:00 PM ET



Map by George Barros, Kateryna Stepanenko, Noel Mikkelsen, Daniel Mealie, and Will Kielm
© 2022 Institute for the Study of War and AEI's Critical Threats Project

* Assessed Russian advances are areas where ISW assesses Russian forces have operated in or launched attacks against but do not control.

Assessed Control of Terrain in Ukraine and Main Russian Maneuver Axes as of October 10, 2022, 3:00 PM ET



* Assessed Russian advances are areas where ISW assesses Russian forces have operated in or launched attacks against but do not control.

Assessed Control of Terrain in Ukraine and Main Russian Maneuver Axes as of October 9, 2022, 3:00 PM ET



Map by George Barros, Kateryna Stepanenko, Noel Mikkelsen, Daniel Mealie, and Will Kielm
© 2022 Institute for the Study of War and AEI's Critical Threats Project

* Assessed Russian advances are areas where ISW assesses Russian forces have operated in or launched attacks against but do not control.

Assessed Control of Terrain in Ukraine and Main Russian Maneuver Axes as of October 8, 2022, 3:00 PM ET



Map by George Barros, Kateryna Stepanenko, Noel Mikkelsen, Daniel Mealie, and Will Kielm
© 2022 Institute for the Study of War and AEI's Critical Threats Project

* Assessed Russian advances are areas where ISW assesses Russian forces have operated in or launched attacks against but do not control.

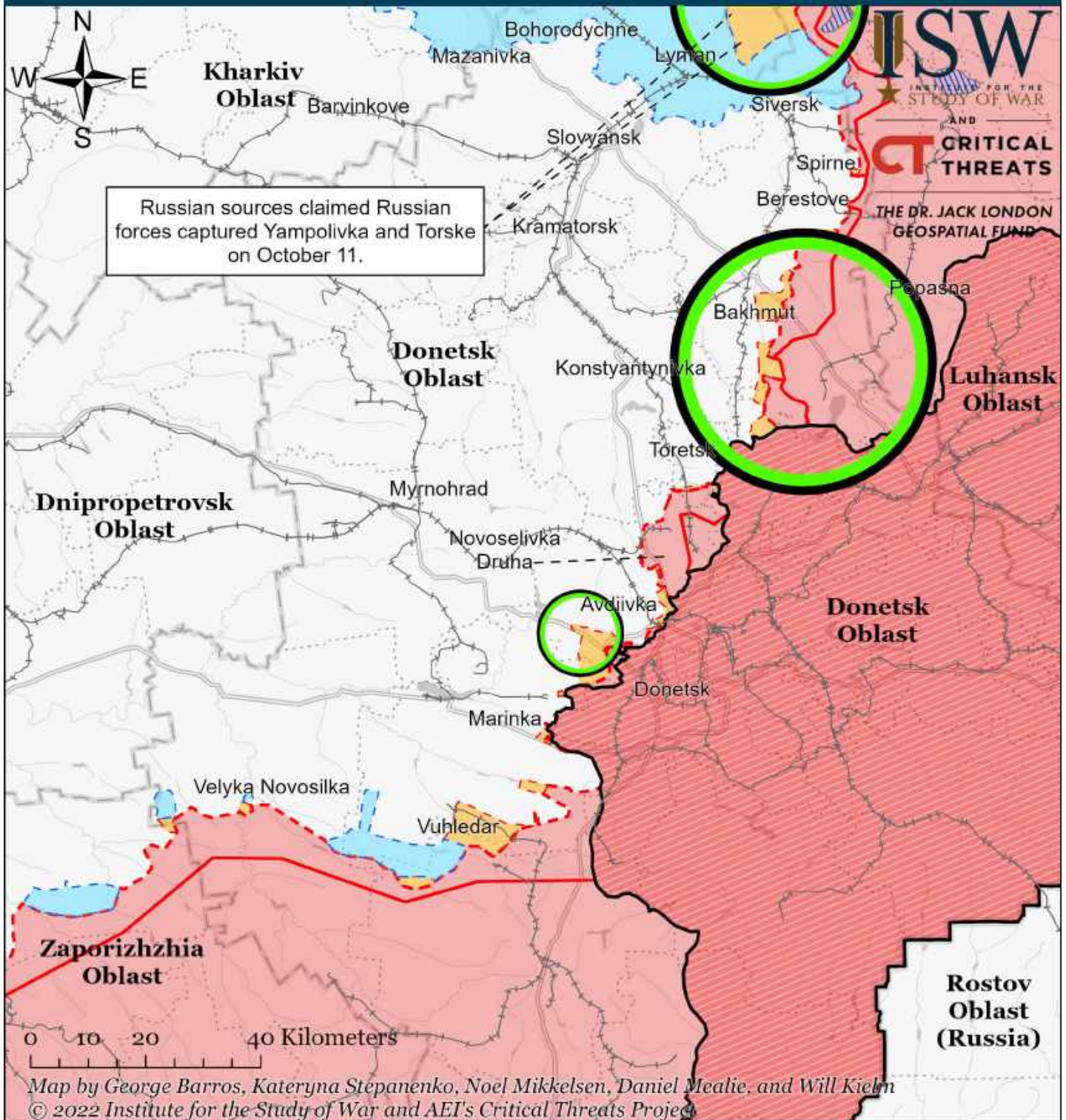
Assessed Control of Terrain in Ukraine and Main Russian Maneuver Axes as of October 7, 2022, 3:00 PM ET



Map by George Barros, Kateryna Stepanenko, Noel Mikkelsen, Daniel Mealie, and Will Kielm
© 2022 Institute for the Study of War and AEI's Critical Threats Project

* Assessed Russian advances are areas where ISW assesses Russian forces have operated in or launched attacks against but do not control.

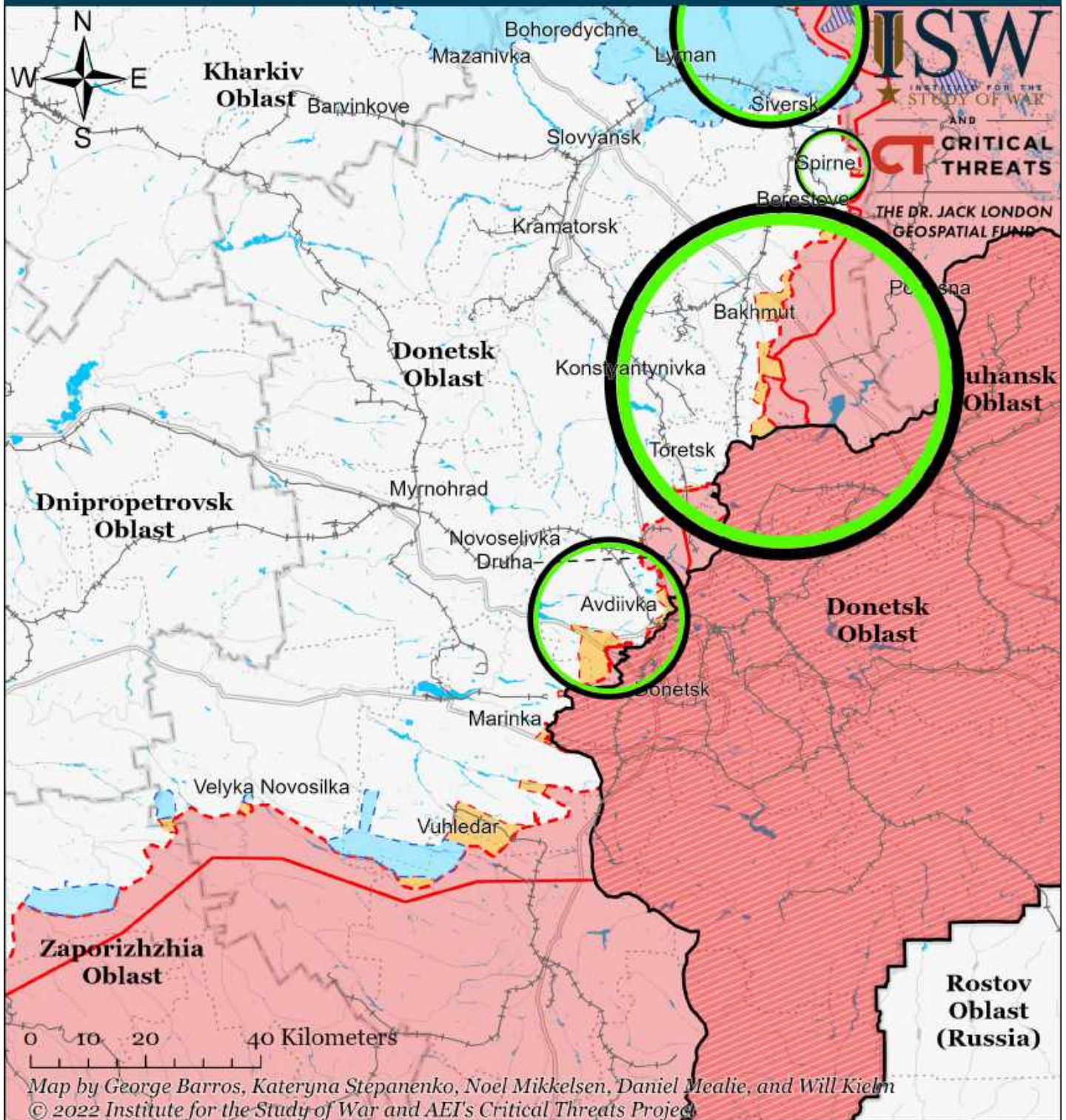
Assessed Control of Terrain Around Donetsk as of October 11, 2022, 3:00 PM ET



- Significant Fighting in the past 24 Hours
- Assessed Russian-controlled Ukrainian Territory
- Assessed Russian Advances in Ukraine*
- Claimed Russian Control over Ukrainian Territory
- Claimed Ukrainian Counteroffensives
- Reported Ukrainian Partisan Warfare
- Major Railroads

* Assessed Russian advances are areas where ISW assesses Russian forces have operated in or launched attacks against but do not control.

Assessed Control of Terrain Around Donetsk as of October 10, 2022, 3:00 PM ET

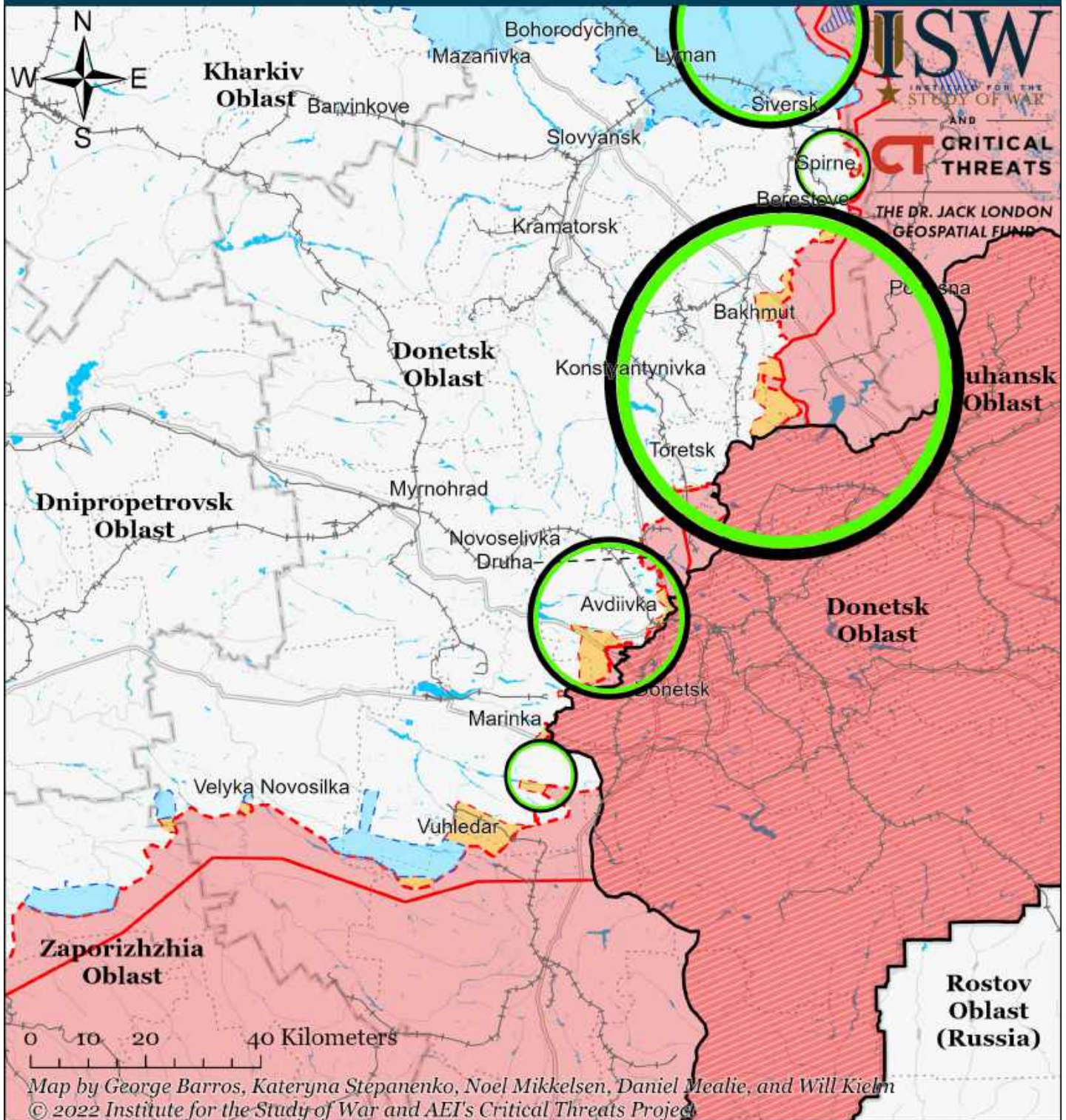


Map by George Barros, Kateryna Stepanenko, Noel Mikkelsen, Daniel Mealie, and Will Kielm
© 2022 Institute for the Study of War and AEI's Critical Threats Project

- Significant Fighting in the past 24 Hours
- Assessed Russian-controlled Ukrainian Territory
- Russian-controlled Ukrainian Territory before February 24
- Claimed Russian Control over Ukrainian Territory
- Assessed Russian Advances in Ukraine*
- Claimed Ukrainian Counteroffensives
- Reported Ukrainian Partisan Warfare
- Major Railroads

* Assessed Russian advances are areas where ISW assesses Russian forces have operated in or launched attacks against but do not control.

Assessed Control of Terrain Around Donetsk as of October 9, 2022, 3:00 PM ET

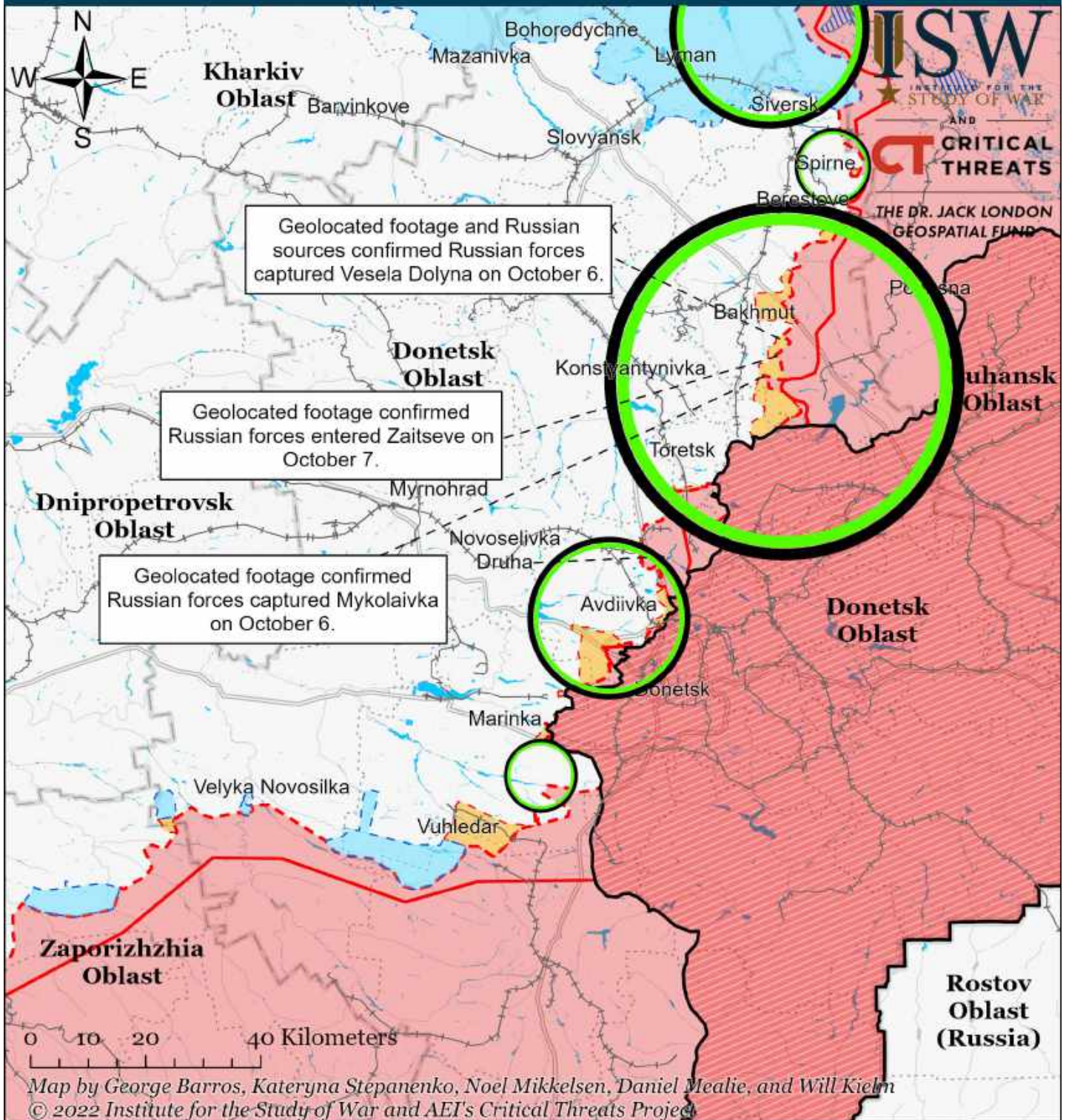


Map by George Barros, Kateryna Stepanenko, Noel Mikkelsen, Daniel Mealie, and Will Kielm
© 2022 Institute for the Study of War and AEI's Critical Threats Project

- Significant Fighting in the past 24 Hours
- Assessed Russian-controlled Ukrainian Territory
- Reported Ukrainian Partisan Warfare
- Russian-controlled Ukrainian Territory before February 24
- Claimed Russian Control over Ukrainian Territory
- Major Railroads
- Assessed Russian Advances in Ukraine*
- Claimed Ukrainian Counteroffensives

* Assessed Russian advances are areas where ISW assesses Russian forces have operated in or launched attacks against but do not control.

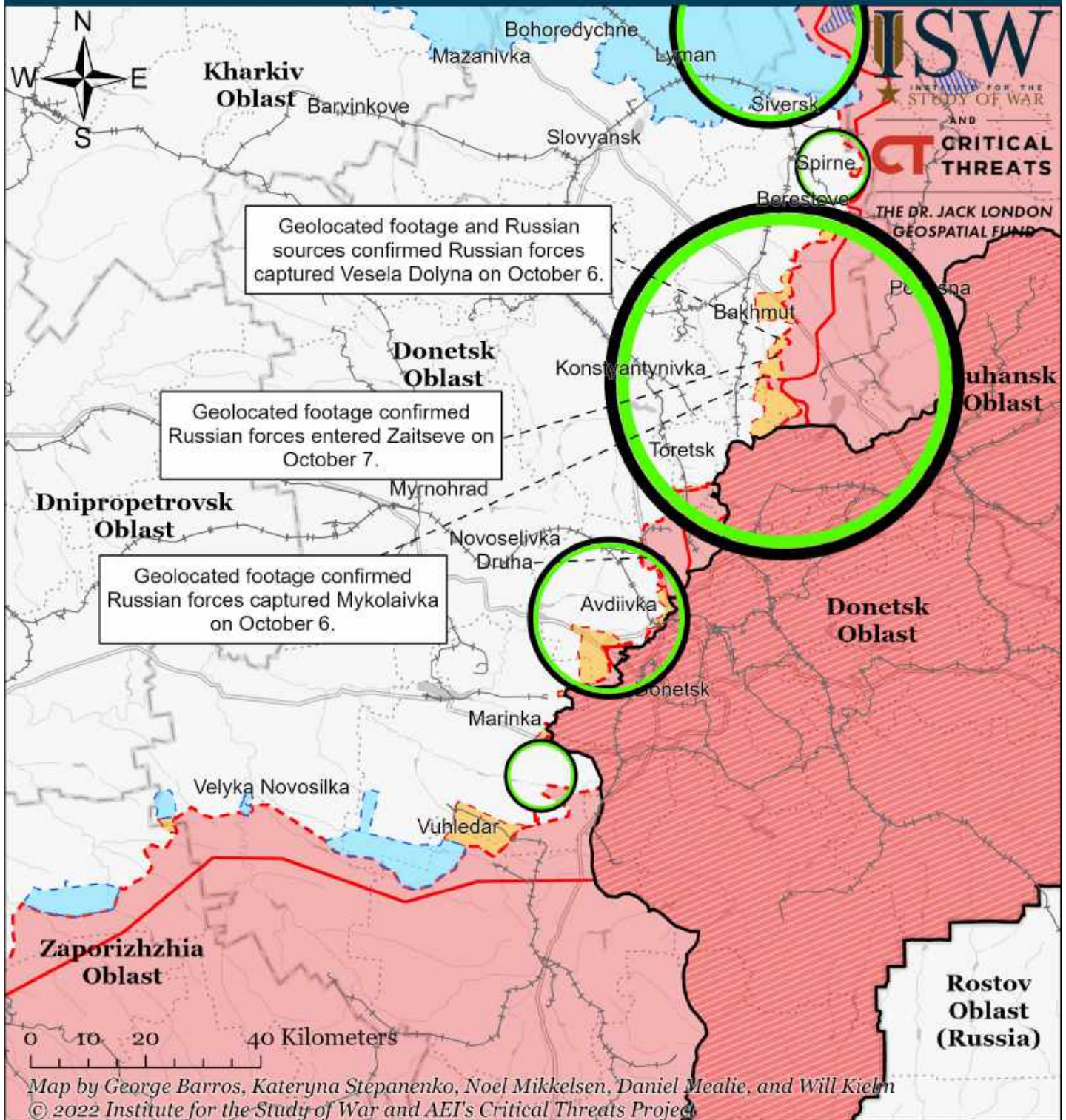
Assessed Control of Terrain Around Donetsk as of October 8, 2022, 3:00 PM ET



- Significant Fighting in the past 24 Hours
- Assessed Russian-controlled Ukrainian Territory
- Reported Ukrainian Partisan Warfare
- Russian-controlled Ukrainian Territory before February 24
- Claimed Russian Control over Ukrainian Territory
- Major Railroads
- Assessed Russian Advances in Ukraine*
- Claimed Ukrainian Counteroffensives

* Assessed Russian advances are areas where ISW assesses Russian forces have operated in or launched attacks against but do not control.

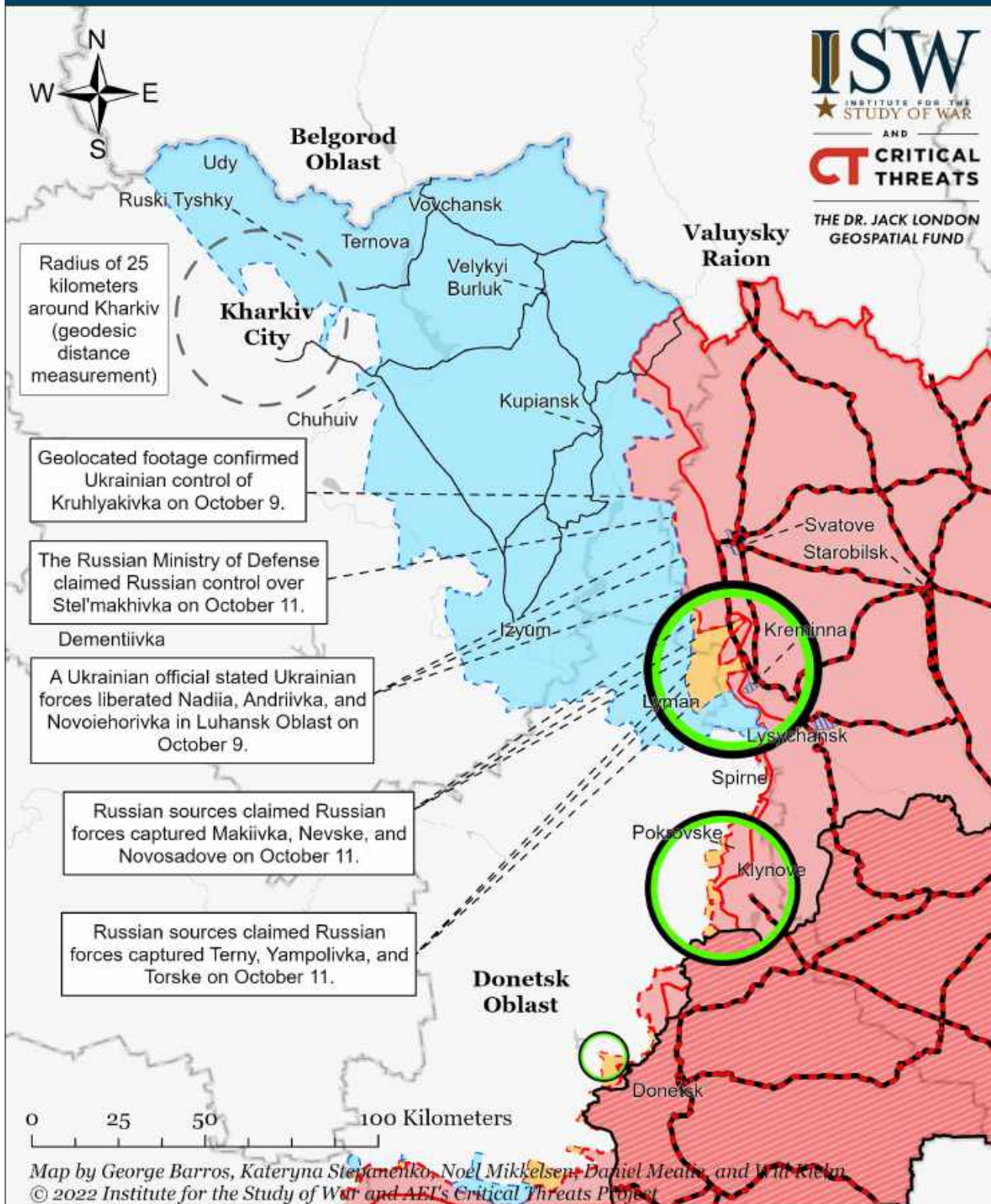
Assessed Control of Terrain Around Donetsk as of October 7, 2022, 3:00 PM ET



- Significant Fighting in the past 24 Hours
- Assessed Russian-controlled Ukrainian Territory
- Reported Ukrainian Partisan Warfare
- Russian-controlled Ukrainian Territory before February 24
- Claimed Russian Control over Ukrainian Territory
- Major Railroads
- Assessed Russian Advances in Ukraine*
- Claimed Ukrainian Counteroffensives

* Assessed Russian advances are areas where ISW assesses Russian forces have operated in or launched attacks against but do not control.

Assessed Control of Terrain Around Kharkiv as of October 11, 2022, 3:00 PM ET



Radius of 25 kilometers around Kharkiv (geodesic distance measurement)

Geolocated footage confirmed Ukrainian control of Kruhlyakivka on October 9.

The Russian Ministry of Defense claimed Russian control over Stel'makhivka on October 11. Dementiivka

A Ukrainian official stated Ukrainian forces liberated Nadiia, Andriivka, and Novoiehorivka in Luhansk Oblast on October 9.

Russian sources claimed Russian forces captured Makiivka, Nevske, and Novosadove on October 11.

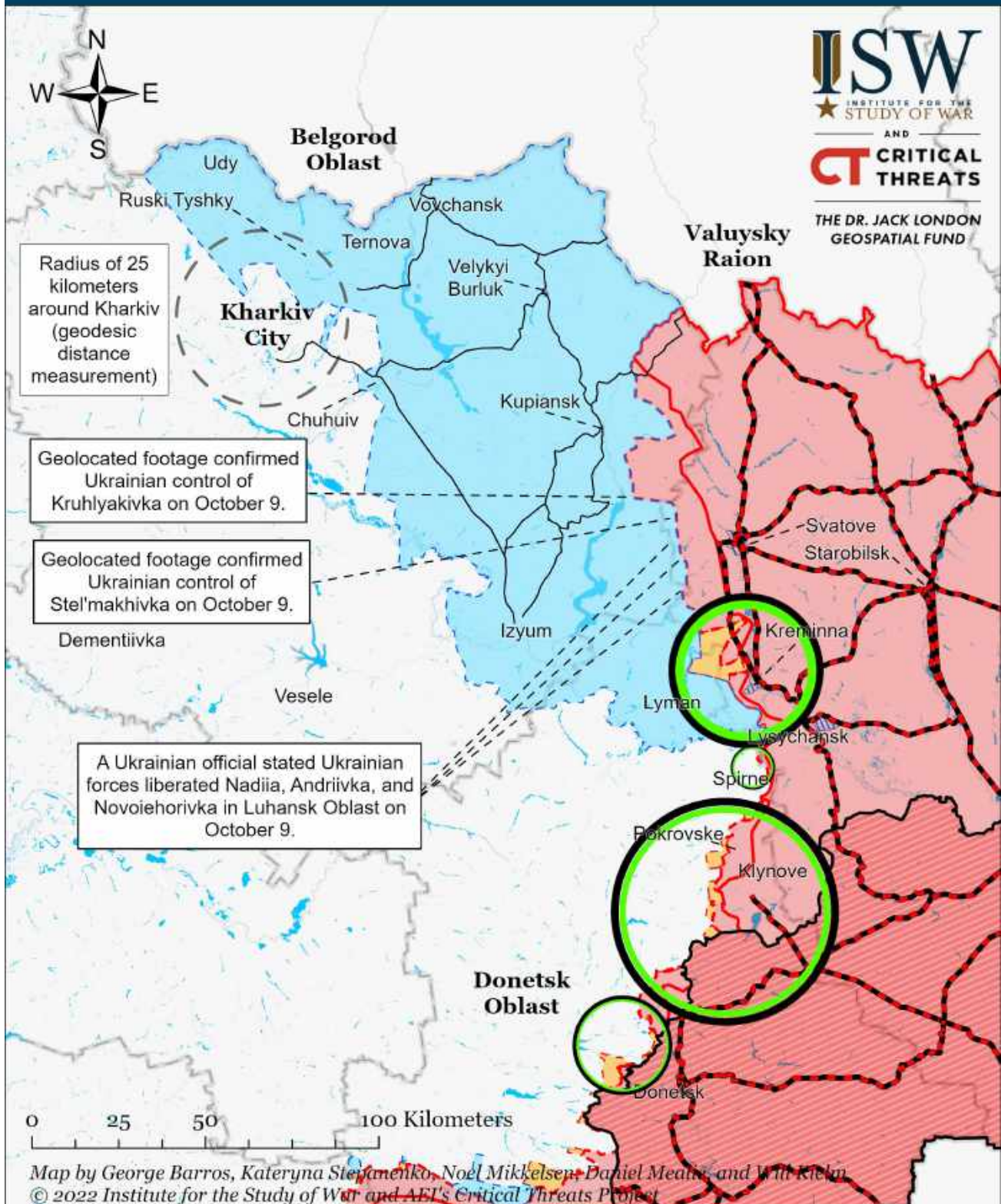
Russian sources claimed Russian forces captured Terny, Yampolivka, and Torske on October 11.

Map by George Barros, Kateryna Stepanenko, Noel Mikkelsen, Daniel Meade, and Will Klein
© 2022 Institute for the Study of War and AFI's Critical Threats Project

- Significant Fighting in the past 24 Hours
- Key Ukrainian Roads
- Russian Ground Lines of Communication
- Russian-controlled Ukrainian Territory before February 24
- Assessed Russian Advances in Ukraine*
- Assessed Russian-controlled Ukrainian Territory
- Claimed Russian Control over Ukrainian Territory
- Claimed Ukrainian Counteroffensives
- Reported Ukrainian Partisan Warfare

* Assessed Russian advances are areas where ISW assesses Russian forces have operated in or launched attacks against but do not control.

Assessed Control of Terrain Around Kharkiv as of October 10, 2022, 3:00 PM ET

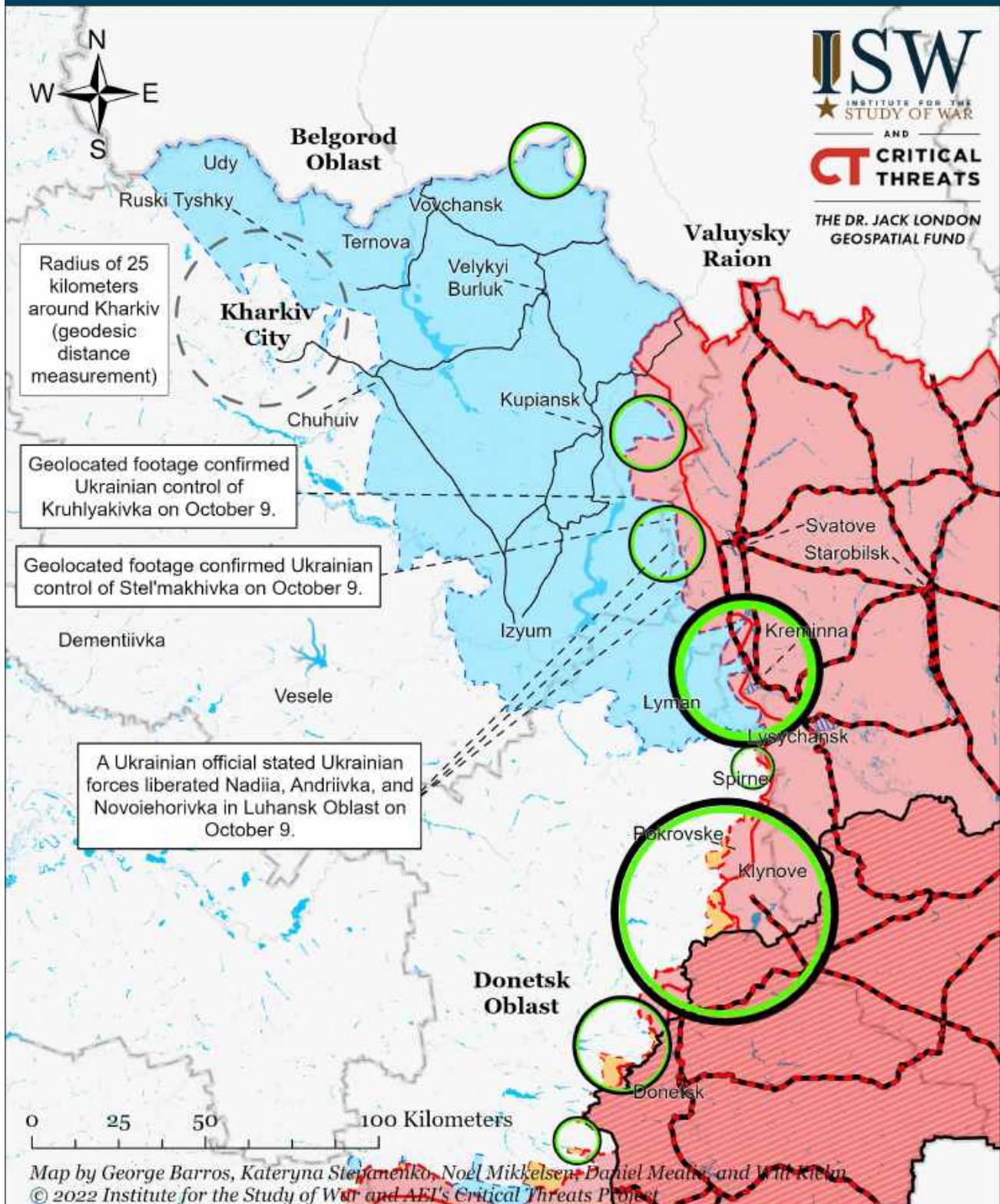


Map by George Barros, Kateryna Stepanenko, Noel Mikkelsen, Daniel Meade, and Will Klein
© 2022 Institute for the Study of War and AFI's Critical Threats Project

- | | | |
|---|---|--|
| Significant Fighting in the past 24 Hours | Russian-controlled Ukrainian Territory before February 24 | Claimed Russian Control over Ukrainian Territory |
| Key Ukrainian Roads | Assessed Russian Advances in Ukraine* | Claimed Ukrainian Counteroffensives |
| Russian Ground Lines of Communication | Assessed Russian-controlled Ukrainian Territory | Reported Ukrainian Partisan Warfare |

* Assessed Russian advances are areas where ISW assesses Russian forces have operated in or launched attacks against but do not control.

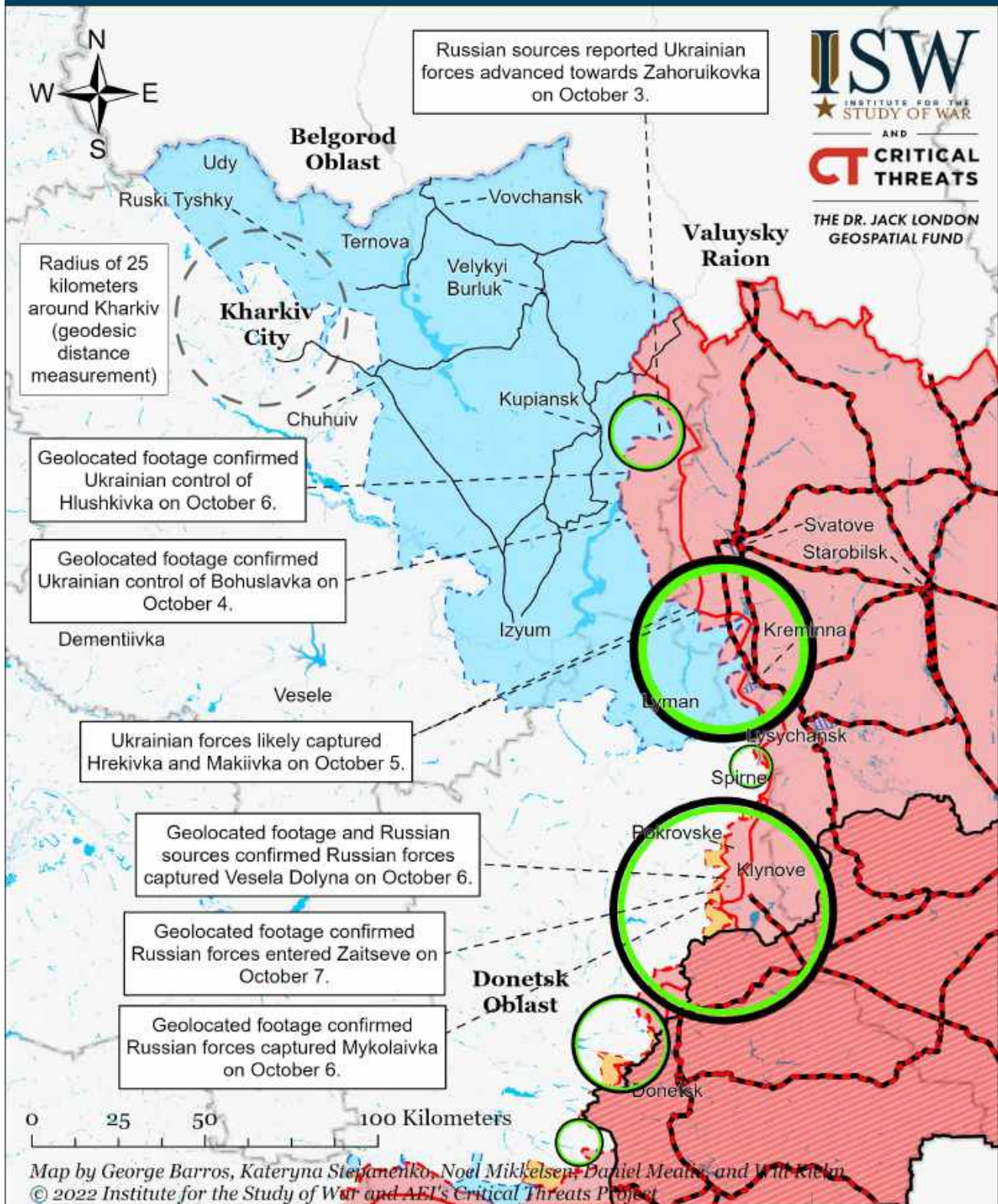
Assessed Control of Terrain Around Kharkiv as of October 9, 2022, 3:00 PM ET



- | | | |
|---|---|--|
| Significant Fighting in the past 24 Hours | Russian-controlled Ukrainian Territory before February 24 | Claimed Russian Control over Ukrainian Territory |
| Key Ukrainian Roads | Assessed Russian Advances in Ukraine* | Claimed Ukrainian Counteroffensives |
| Russian Ground Lines of Communication | Assessed Russian-controlled Ukrainian Territory | Reported Ukrainian Partisan Warfare |

* Assessed Russian advances are areas where ISW assesses Russian forces have operated in or launched attacks against but do not control.

Assessed Control of Terrain Around Kharkiv as of October 8, 2022, 3:00 PM ET

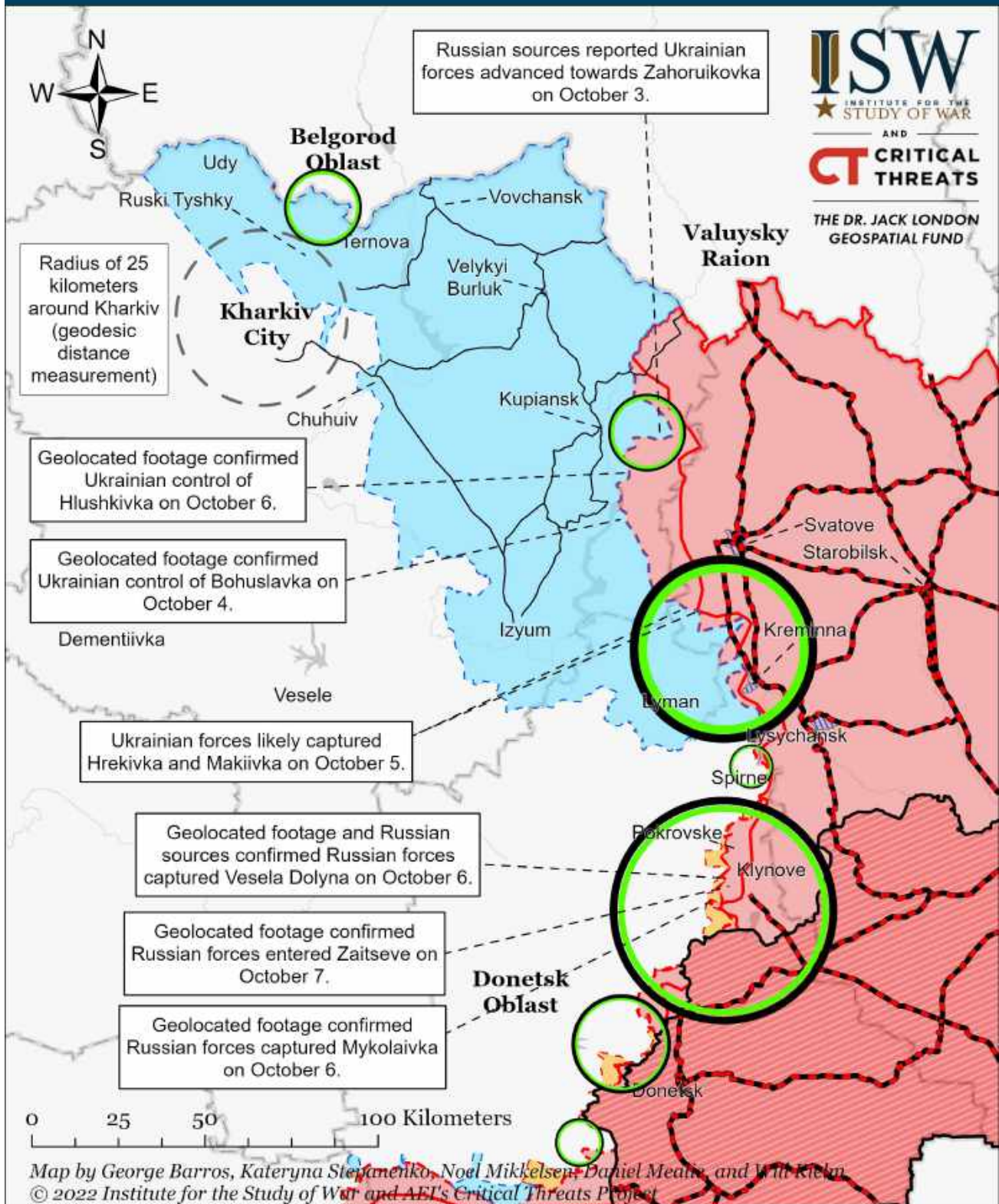


ISW
INSTITUTE FOR THE
STUDY OF WAR
AND
**CRITICAL
THREATS**
THE DR. JACK LONDON
GEOSPATIAL FUND

- Significant Fighting in the past 24 Hours
- Key Ukrainian Roads
- Russian Ground Lines of Communication
- Russian-controlled Ukrainian Territory before February 24
- Assessed Russian Advances in Ukraine*
- Assessed Russian-controlled Ukrainian Territory
- Claimed Russian Control over Ukrainian Territory
- Claimed Ukrainian Counteroffensives
- Reported Ukrainian Partisan Warfare

* Assessed Russian advances are areas where ISW assesses Russian forces have operated in or launched attacks against but do not control.

Assessed Control of Terrain Around Kharkiv as of October 7, 2022, 3:00 PM ET



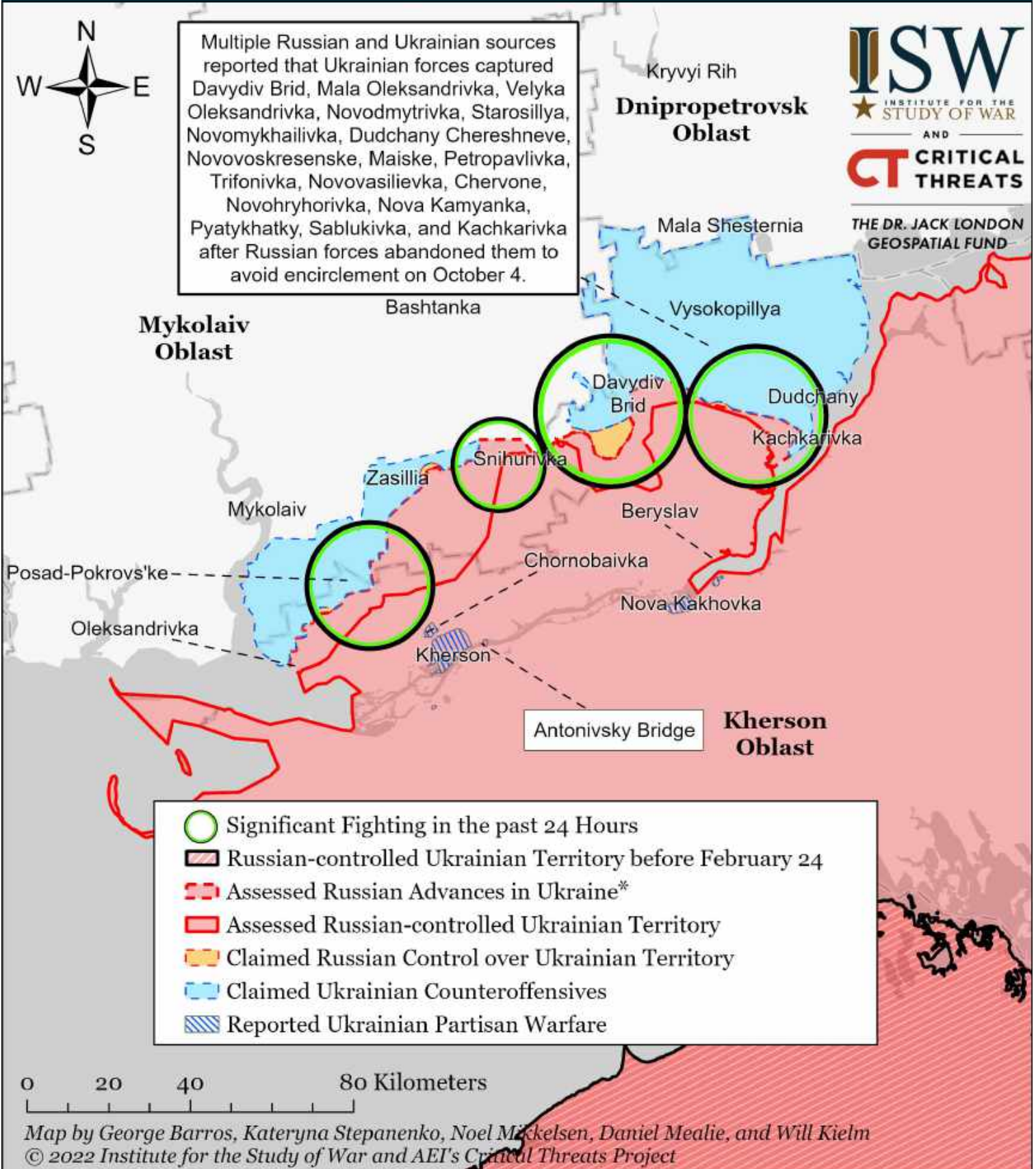
- Significant Fighting in the past 24 Hours
- Key Ukrainian Roads
- Russian Ground Lines of Communication
- Russian-controlled Ukrainian Territory before February 24
- Assessed Russian Advances in Ukraine*
- Assessed Russian-controlled Ukrainian Territory
- Claimed Russian Control over Ukrainian Territory
- Claimed Ukrainian Counteroffensives
- Reported Ukrainian Partisan Warfare

* Assessed Russian advances are areas where ISW assesses Russian forces have operated in or launched attacks against but do not control.

Assessed Control of Terrain Around Kherson and Mykolaiv as of October 11, 2022, 3:00 PM ET



Multiple Russian and Ukrainian sources reported that Ukrainian forces captured Davydiv Brid, Mala Oleksandrivka, Velyka Oleksandrivka, Novodmytrivka, Starosillya, Novomykhailivka, Dudchany Chereshneve, Novovoskresenske, Maiske, Petropavlivka, Trifonivka, Novovasilievka, Chervone, Novohryhorivka, Nova Kamyanka, Pyatykhatky, Sablukivka, and Kachkarivka after Russian forces abandoned them to avoid encirclement on October 4.



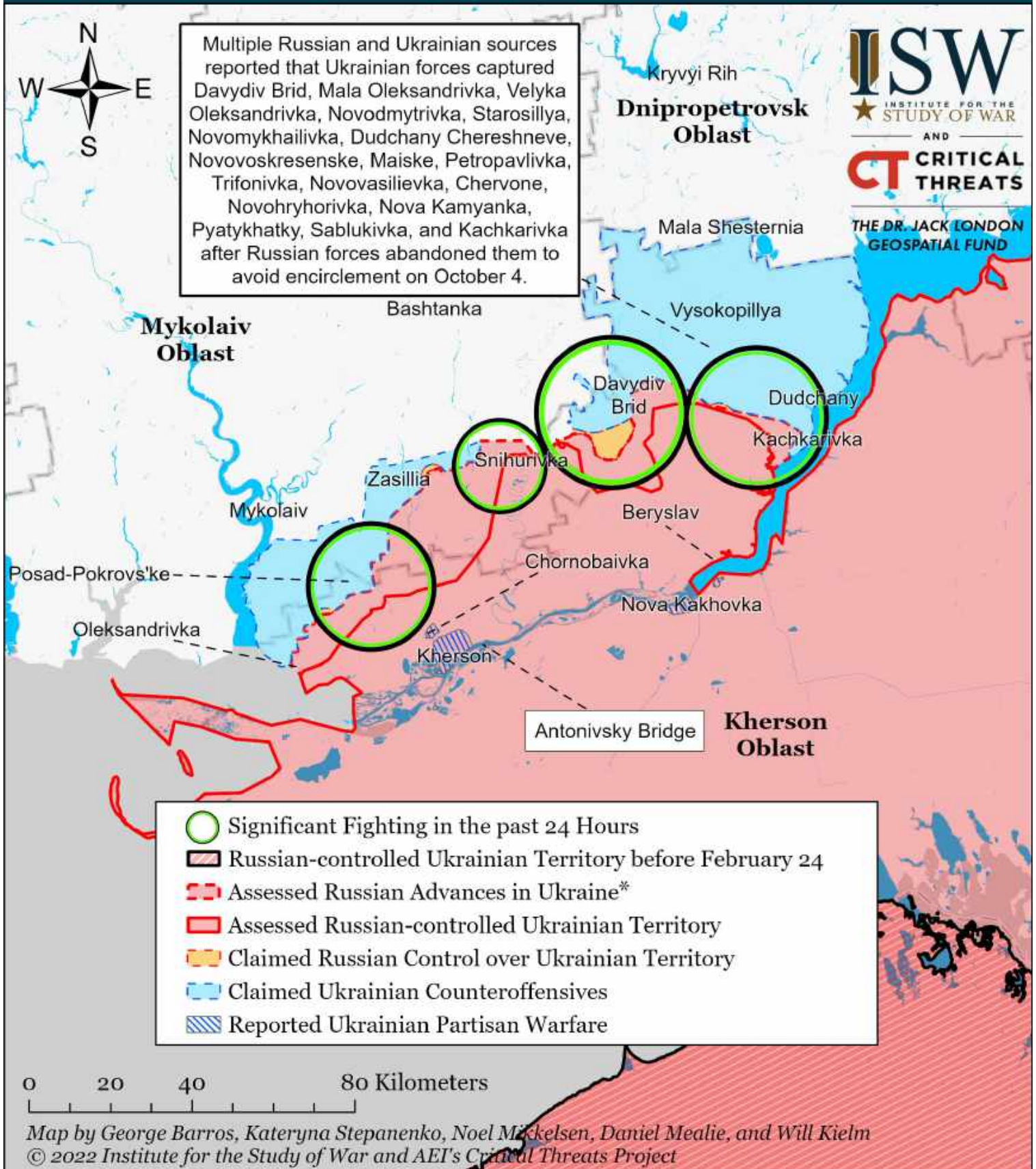
- Significant Fighting in the past 24 Hours
- Russian-controlled Ukrainian Territory before February 24
- Assessed Russian Advances in Ukraine*
- Assessed Russian-controlled Ukrainian Territory
- Claimed Russian Control over Ukrainian Territory
- Claimed Ukrainian Counteroffensives
- Reported Ukrainian Partisan Warfare

0 20 40 80 Kilometers

Map by George Barros, Kateryna Stepanenko, Noel Mikkelsen, Daniel Mealie, and Will Kielm
 © 2022 Institute for the Study of War and AEI's Critical Threats Project

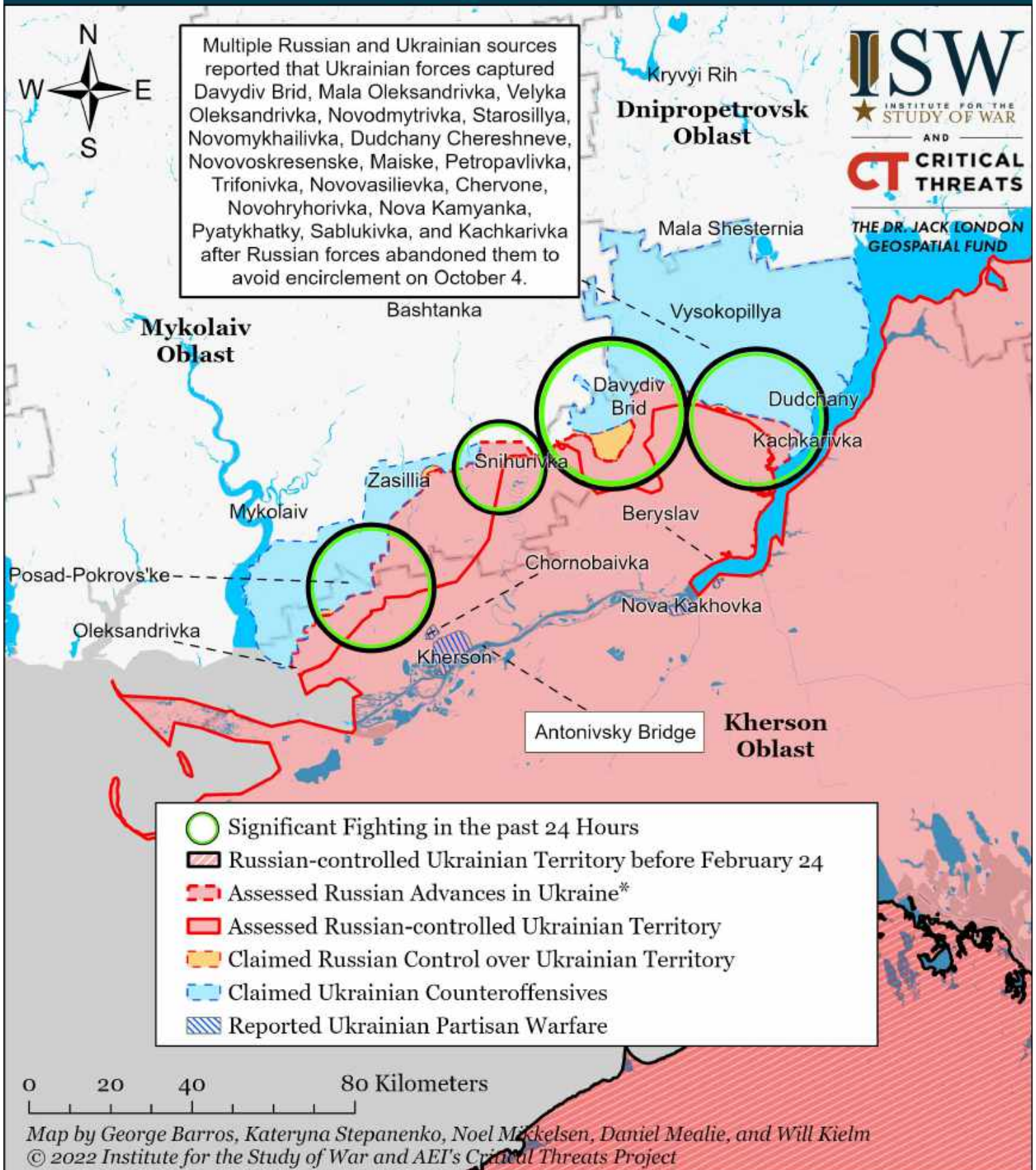
* Assessed Russian advances are areas where ISW assesses Russian forces have operated in or launched attacks against but do not control.

Assessed Control of Terrain Around Kherson and Mykolaiv as of October 10, 2022, 3:00 PM ET



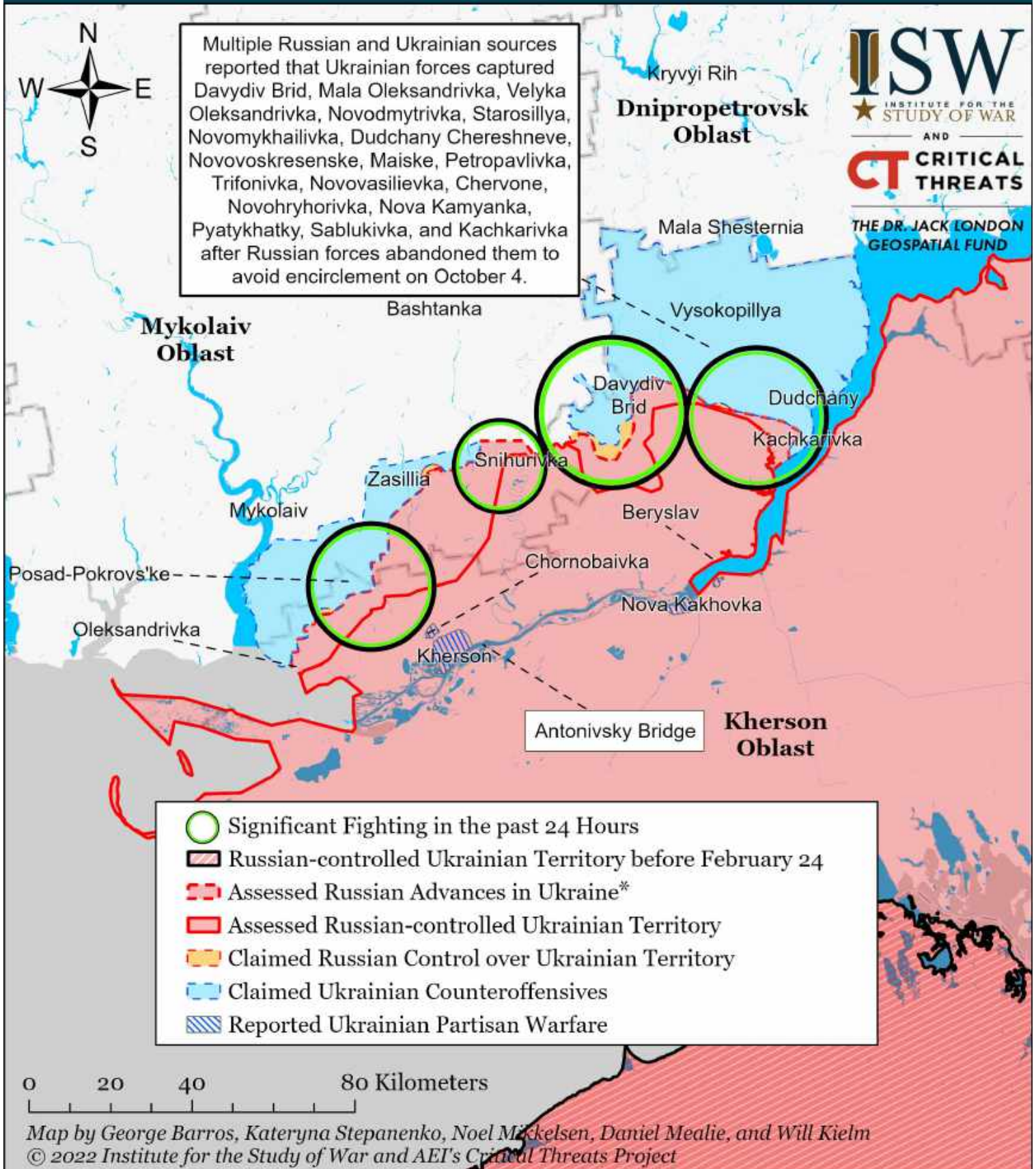
* Assessed Russian advances are areas where ISW assesses Russian forces have operated in or launched attacks against but do not control.

Assessed Control of Terrain Around Kherson and Mykolaiv as of October 9, 2022, 3:00 PM ET



* Assessed Russian advances are areas where ISW assesses Russian forces have operated in or launched attacks against but do not control.

Assessed Control of Terrain Around Kherson and Mykolaiv as of October 8, 2022, 3:00 PM ET

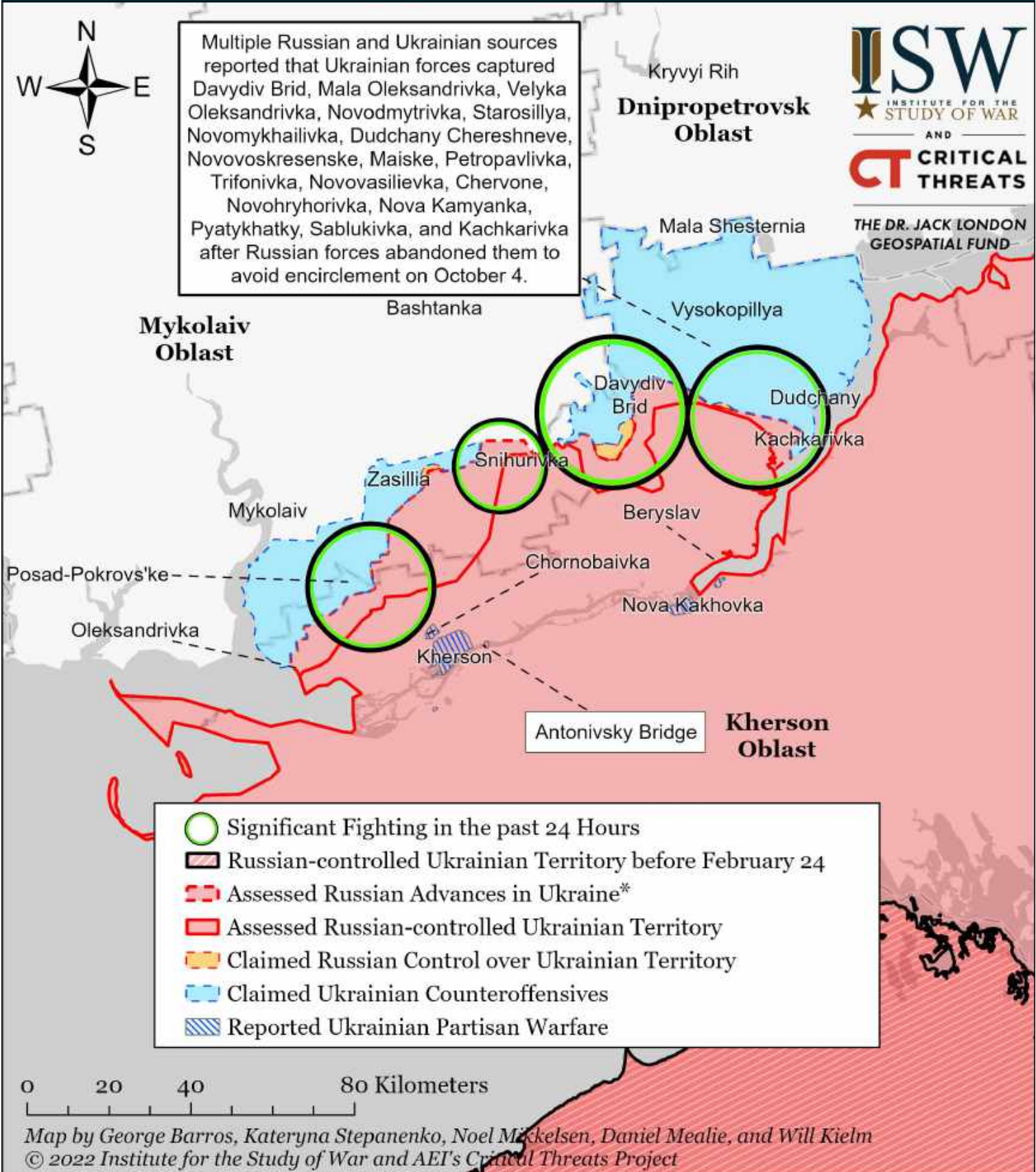


* Assessed Russian advances are areas where ISW assesses Russian forces have operated in or launched attacks against but do not control.

Assessed Control of Terrain Around Kherson and Mykolaiv as of October 7, 2022, 3:00 PM ET



Multiple Russian and Ukrainian sources reported that Ukrainian forces captured Davydiv Brid, Mala Oleksandrivka, Velyka Oleksandrivka, Novodmytrivka, Starosillya, Novomykhailivka, Dudchany Chereshneve, Novovoskresenske, Maiske, Petropavlivka, Trifonivka, Novovasilievka, Chervone, Novohryhorivka, Nova Kamyanka, Pyatykhatky, Sablukivka, and Kachkarivka after Russian forces abandoned them to avoid encirclement on October 4.



* Assessed Russian advances are areas where ISW assesses Russian forces have operated in or launched attacks against but do not control.