

# Assessed Control of Terrain in Ukraine and Main Russian Maneuver Axes as of October 16, 2022, 3:00 PM ET



Map by George Barros, Kateryna Stepanenko, Noel Mikkelsen, Daniel Mealie, and Will Kielm  
© 2022 Institute for the Study of War and AEI's Critical Threats Project

\* Assessed Russian advances are areas where ISW assesses Russian forces have operated in or launched attacks against but do not control.

# Assessed Control of Terrain in Ukraine and Main Russian Maneuver Axes as of October 15, 2022, 3:00 PM ET



Map by George Barros, Kateryna Stepanenko, Noel Mikkelsen, Daniel Mealie, and Will Kielm  
© 2022 Institute for the Study of War and AEI's Critical Threats Project

\* Assessed Russian advances are areas where ISW assesses Russian forces have operated in or launched attacks against but do not control.

# Assessed Control of Terrain in Ukraine and Main Russian Maneuver Axes as of October 14, 2022, 3:00 PM ET



\* Assessed Russian advances are areas where ISW assesses Russian forces have operated in or launched attacks against but do not control.

# Assessed Control of Terrain in Ukraine and Main Russian Maneuver Axes as of October 13, 2022, 3:00 PM ET



Map by George Barros, Kateryna Stepanenko, Noel Mikkelsen, Daniel Mealie, and Will Kielm  
© 2022 Institute for the Study of War and AEI's Critical Threats Project

\* Assessed Russian advances are areas where ISW assesses Russian forces have operated in or launched attacks against but do not control.

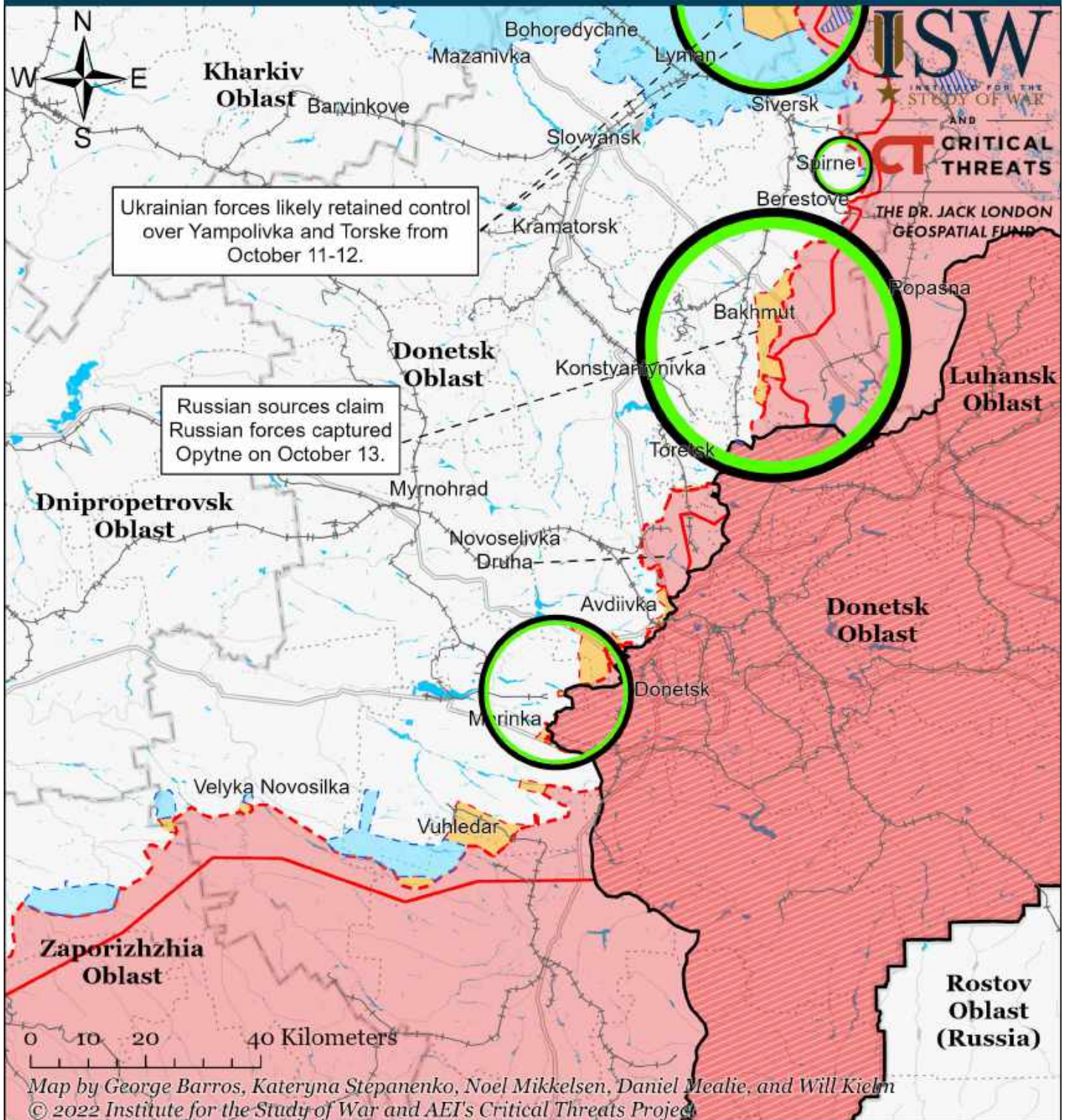
# Assessed Control of Terrain in Ukraine and Main Russian Maneuver Axes as of October 12, 2022, 3:00 PM ET



Map by George Barros, Kateryna Stepanenko, Noel Mikkelsen, Daniel Mealie, and Will Kielm  
© 2022 Institute for the Study of War and AEI's Critical Threats Project

\* Assessed Russian advances are areas where ISW assesses Russian forces have operated in or launched attacks against but do not control.

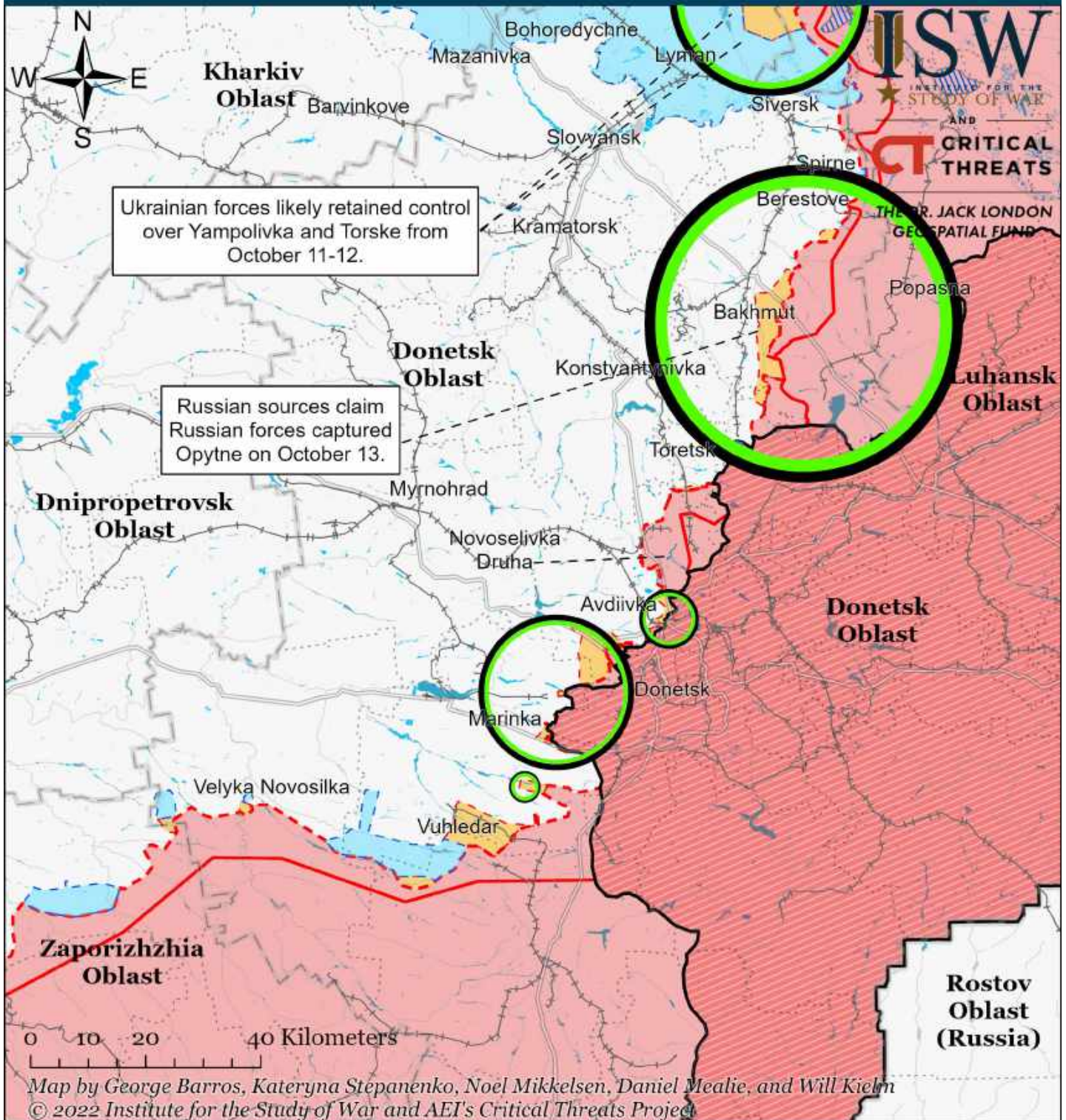
# Assessed Control of Terrain Around Donetsk as of October 16, 2022, 3:00 PM ET



- Significant Fighting in the past 24 Hours
- Assessed Russian-controlled Ukrainian Territory
- Reported Ukrainian Partisan Warfare
- Russian-controlled Ukrainian Territory before February 24
- Claimed Russian Control over Ukrainian Territory
- Assessed Russian Advances in Ukraine\*
- Claimed Ukrainian Counteroffensives
- Major Railroads

\* Assessed Russian advances are areas where ISW assesses Russian forces have operated in or launched attacks against but do not control.

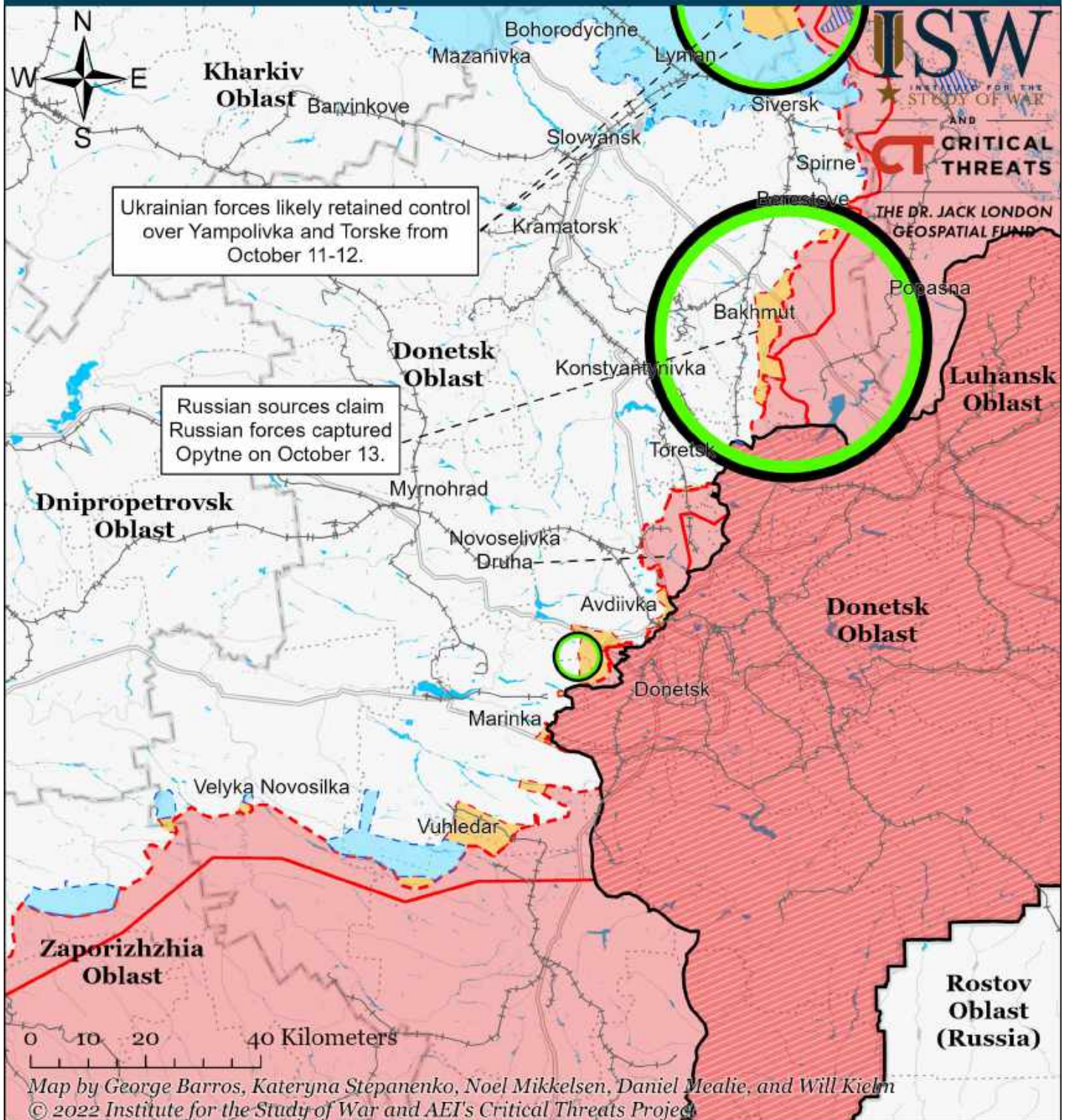
# Assessed Control of Terrain Around Donetsk as of October 15, 2022, 3:00 PM ET



- Significant Fighting in the past 24 Hours
- Assessed Russian-controlled Ukrainian Territory
- Reported Ukrainian Partisan Warfare
- Claimed Russian Control over Ukrainian Territory
- Assessed Russian Advances in Ukraine\*
- Claimed Ukrainian Counteroffensives
- Major Railroads

\* Assessed Russian advances are areas where ISW assesses Russian forces have operated in or launched attacks against but do not control.

# Assessed Control of Terrain Around Donetsk as of October 14, 2022, 3:00 PM ET

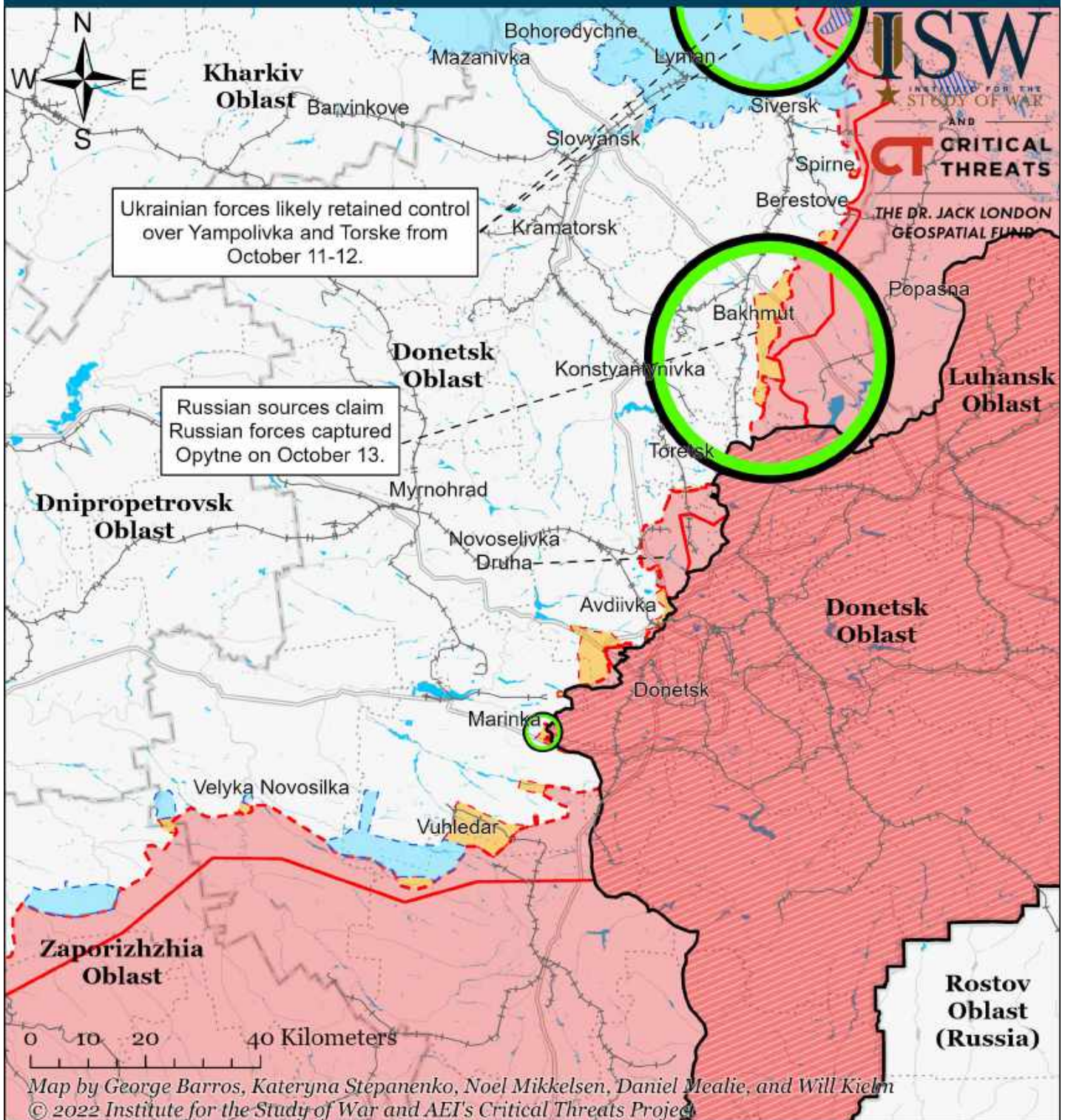


- Significant Fighting in the past 24 Hours
- Assessed Russian-controlled Ukrainian Territory
- Reported Ukrainian Partisan Warfare
- Russian-controlled Ukrainian Territory before February 24
- Claimed Russian Control over Ukrainian Territory
- Assessed Russian Advances in Ukraine\*
- Claimed Ukrainian Counteroffensives
- Major Railroads

\* Assessed Russian advances are areas where ISW assesses Russian forces have operated in or launched attacks against but do not control.



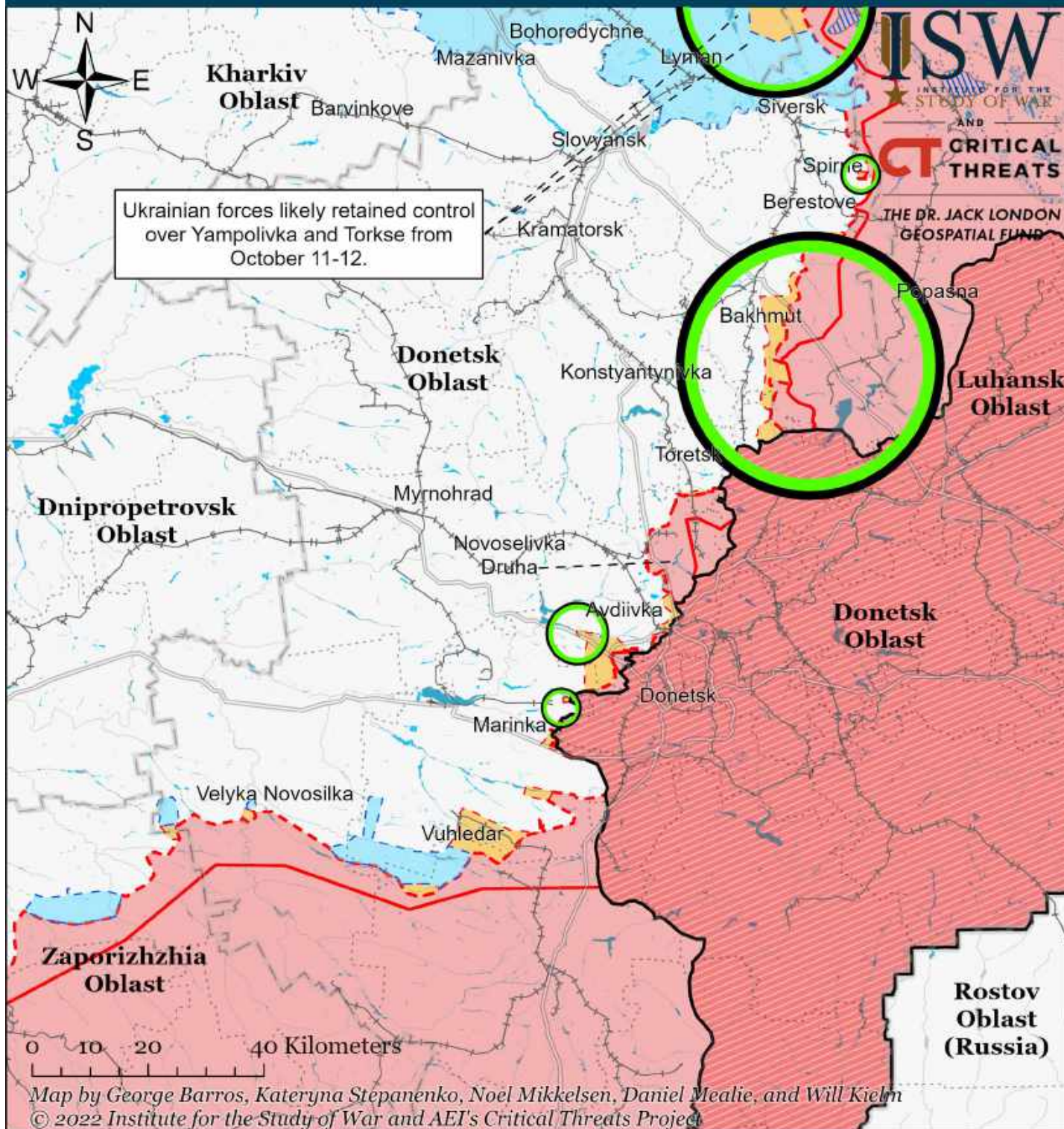
# Assessed Control of Terrain Around Donetsk as of October 13, 2022, 3:00 PM ET



- Significant Fighting in the past 24 Hours
- Assessed Russian-controlled Ukrainian Territory
- Reported Ukrainian Partisan Warfare
- Russian-controlled Ukrainian Territory before February 24
- Claimed Russian Control over Ukrainian Territory
- Major Railroads
- Assessed Russian Advances in Ukraine\*
- Claimed Ukrainian Counteroffensives

\* Assessed Russian advances are areas where ISW assesses Russian forces have operated in or launched attacks against but do not control.

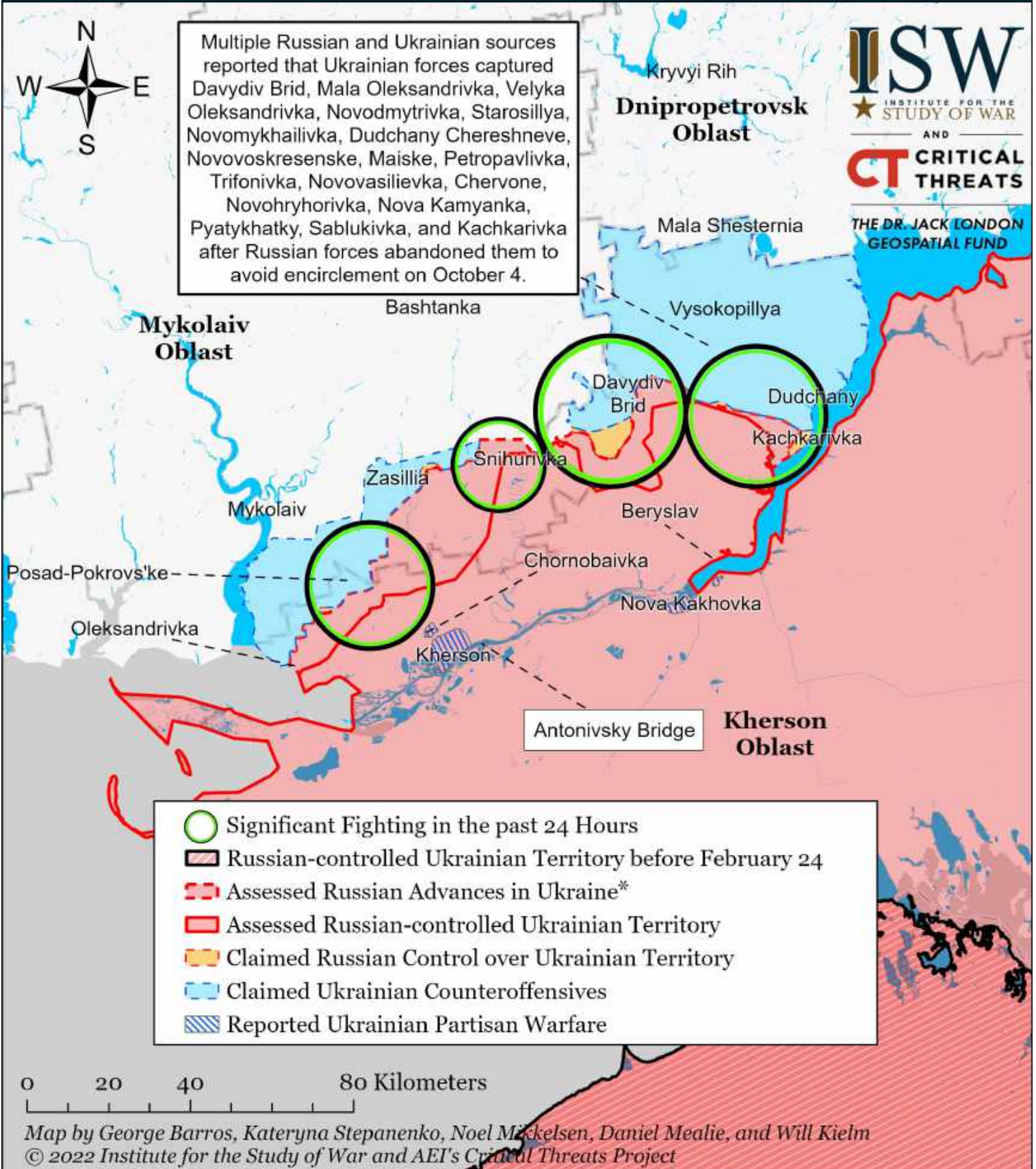
# Assessed Control of Terrain Around Donetsk as of October 12, 2022, 3:00 PM ET



- Significant Fighting in the past 24 Hours
- Assessed Russian-controlled Ukrainian Territory
- Assessed Russian Advances in Ukraine\*
- Claimed Russian Control over Ukrainian Territory
- Claimed Ukrainian Counteroffensives
- Reported Ukrainian Partisan Warfare
- Major Railroads

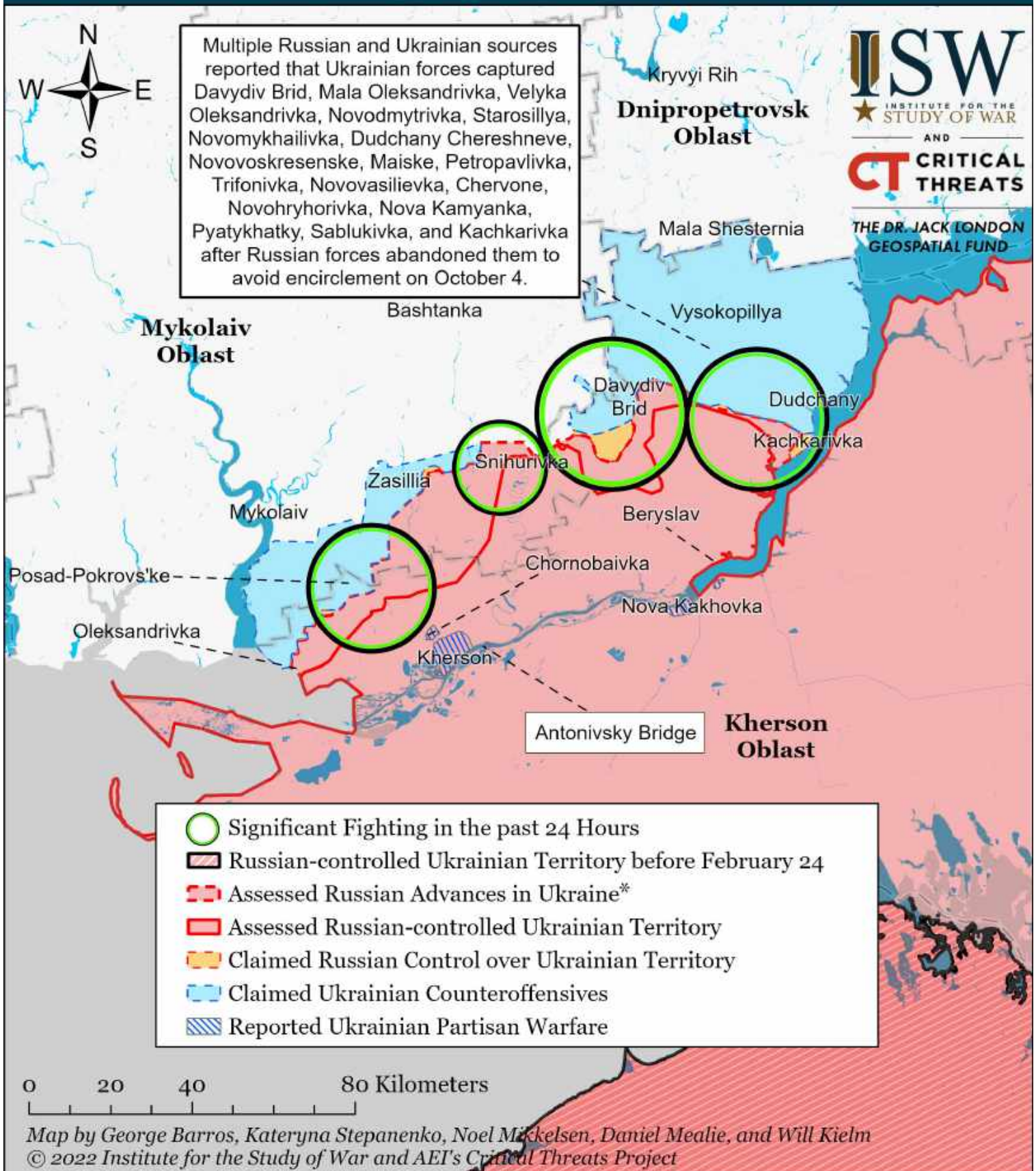
\* Assessed Russian advances are areas where ISW assesses Russian forces have operated in or launched attacks against but do not control.

# Assessed Control of Terrain Around Kherson and Mykolaiv as of October 16, 2022, 3:00 PM ET



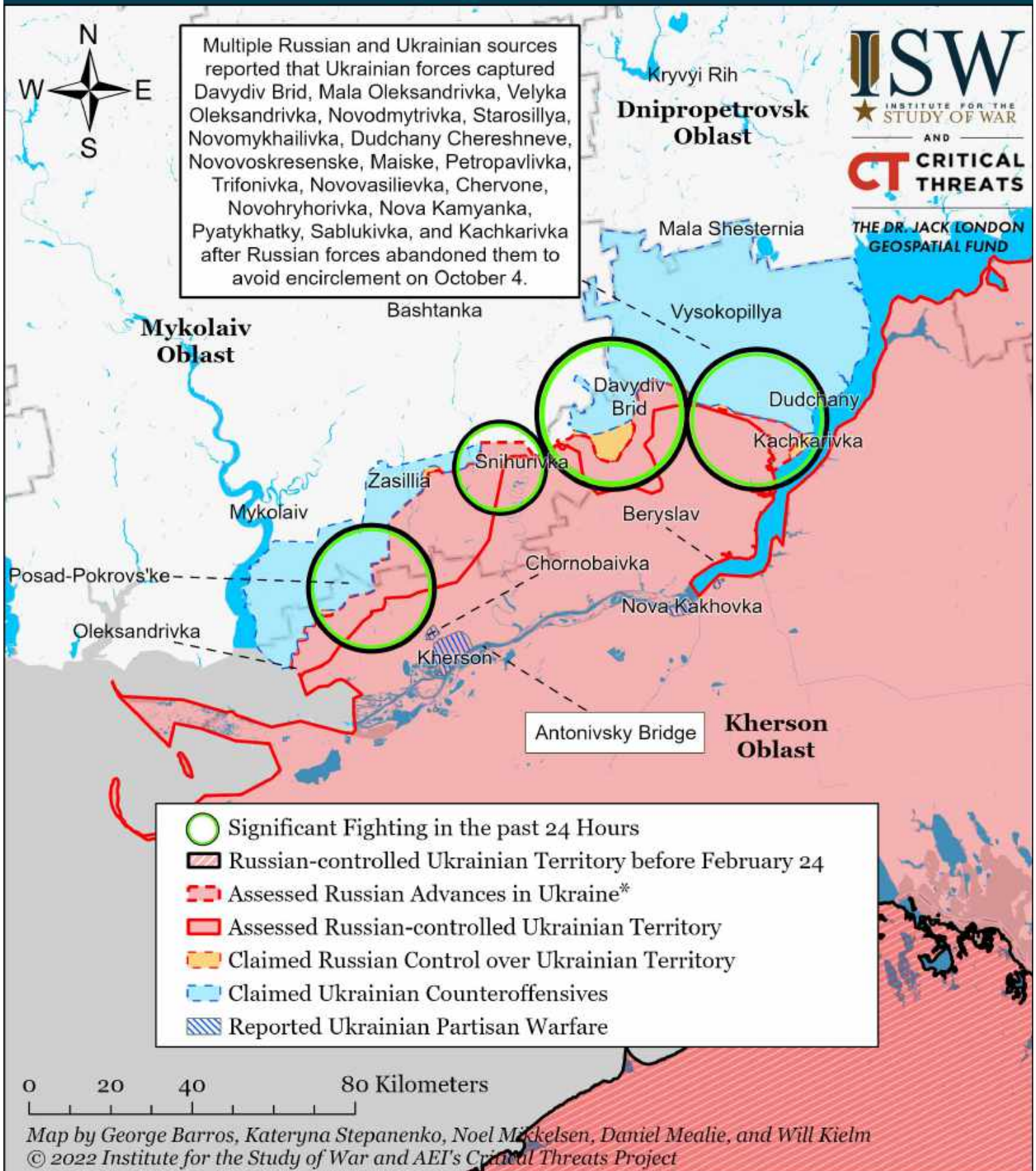
\* Assessed Russian advances are areas where ISW assesses Russian forces have operated in or launched attacks against but do not control.

# Assessed Control of Terrain Around Kherson and Mykolaiv as of October 15, 2022, 3:00 PM ET



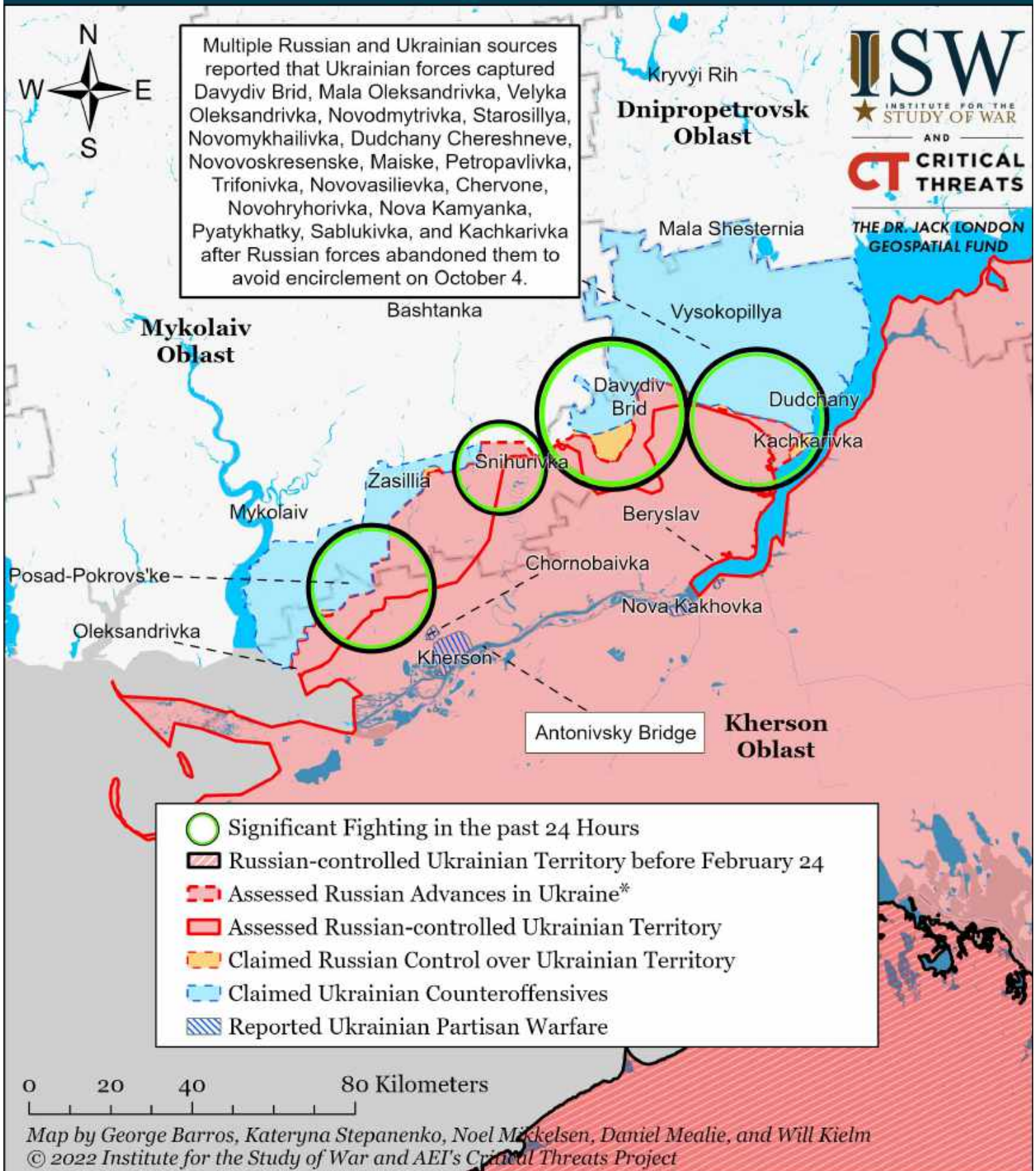
\* Assessed Russian advances are areas where ISW assesses Russian forces have operated in or launched attacks against but do not control.

# Assessed Control of Terrain Around Kherson and Mykolaiv as of October 14, 2022, 3:00 PM ET



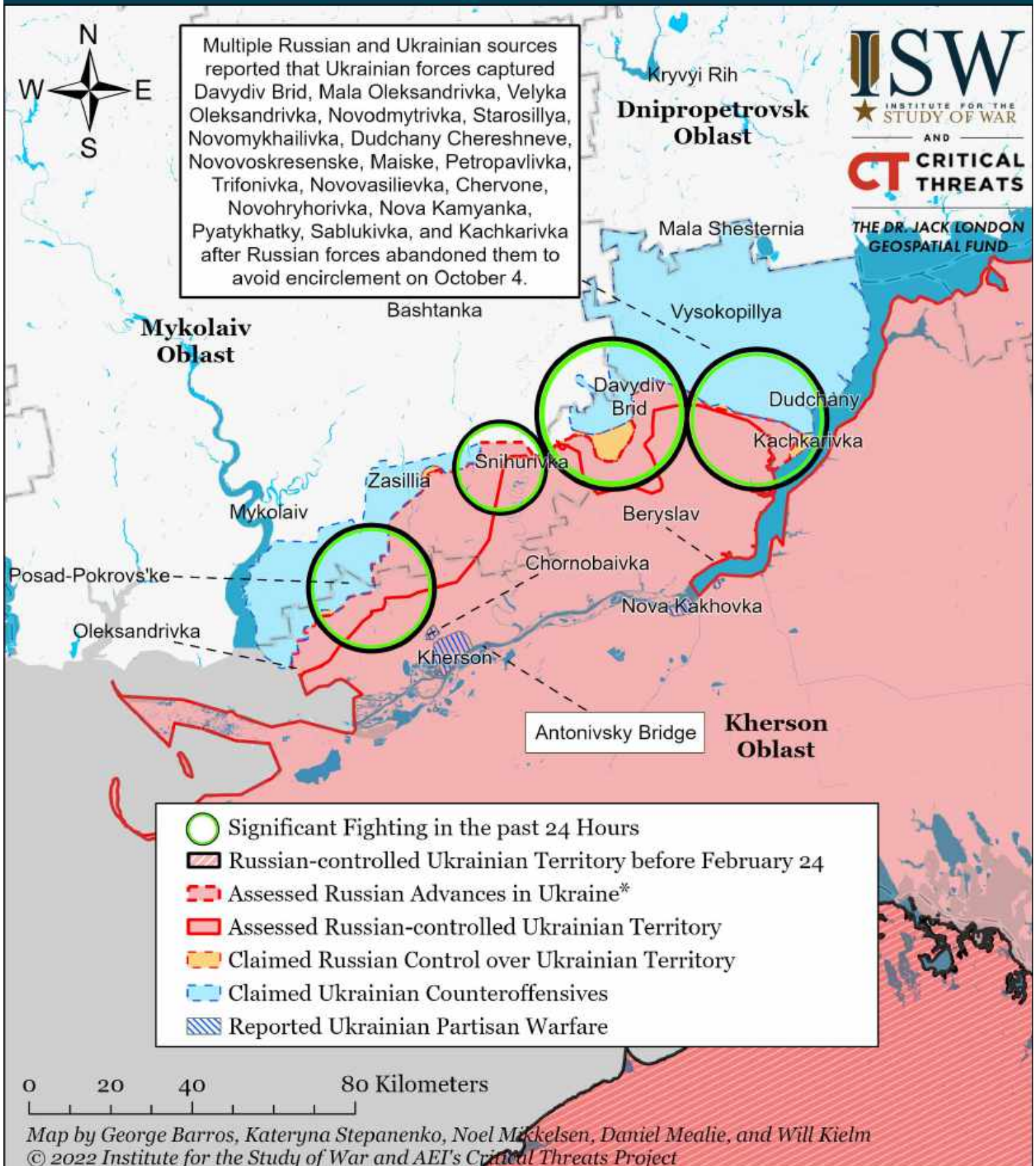
\* Assessed Russian advances are areas where ISW assesses Russian forces have operated in or launched attacks against but do not control.

# Assessed Control of Terrain Around Kherson and Mykolaiv as of October 13, 2022, 3:00 PM ET



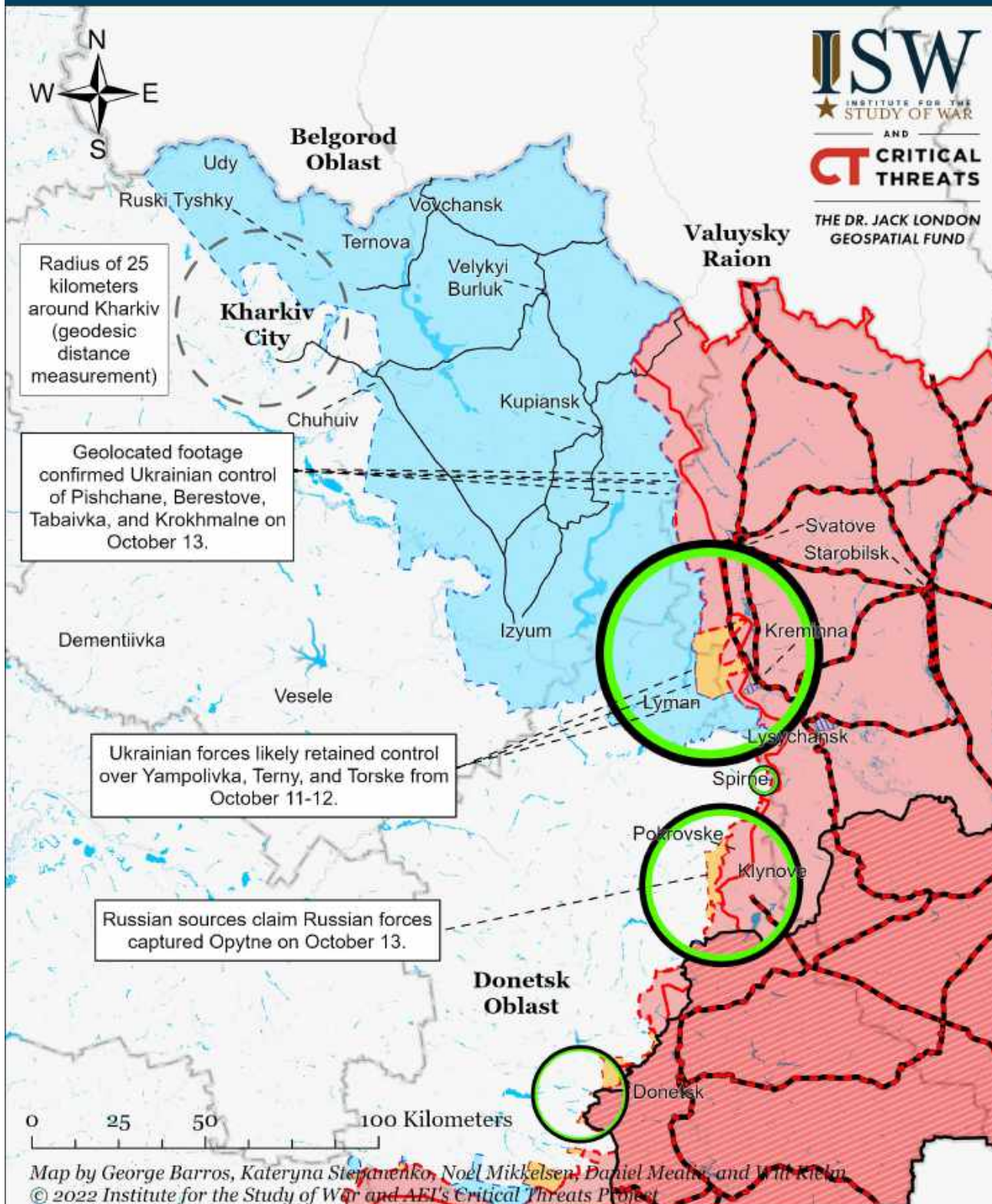
\* Assessed Russian advances are areas where ISW assesses Russian forces have operated in or launched attacks against but do not control.

# Assessed Control of Terrain Around Kherson and Mykolaiv as of October 12, 2022, 3:00 PM ET



\* Assessed Russian advances are areas where ISW assesses Russian forces have operated in or launched attacks against but do not control.

# Assessed Control of Terrain Around Kharkiv as of October 16, 2022, 3:00 PM ET

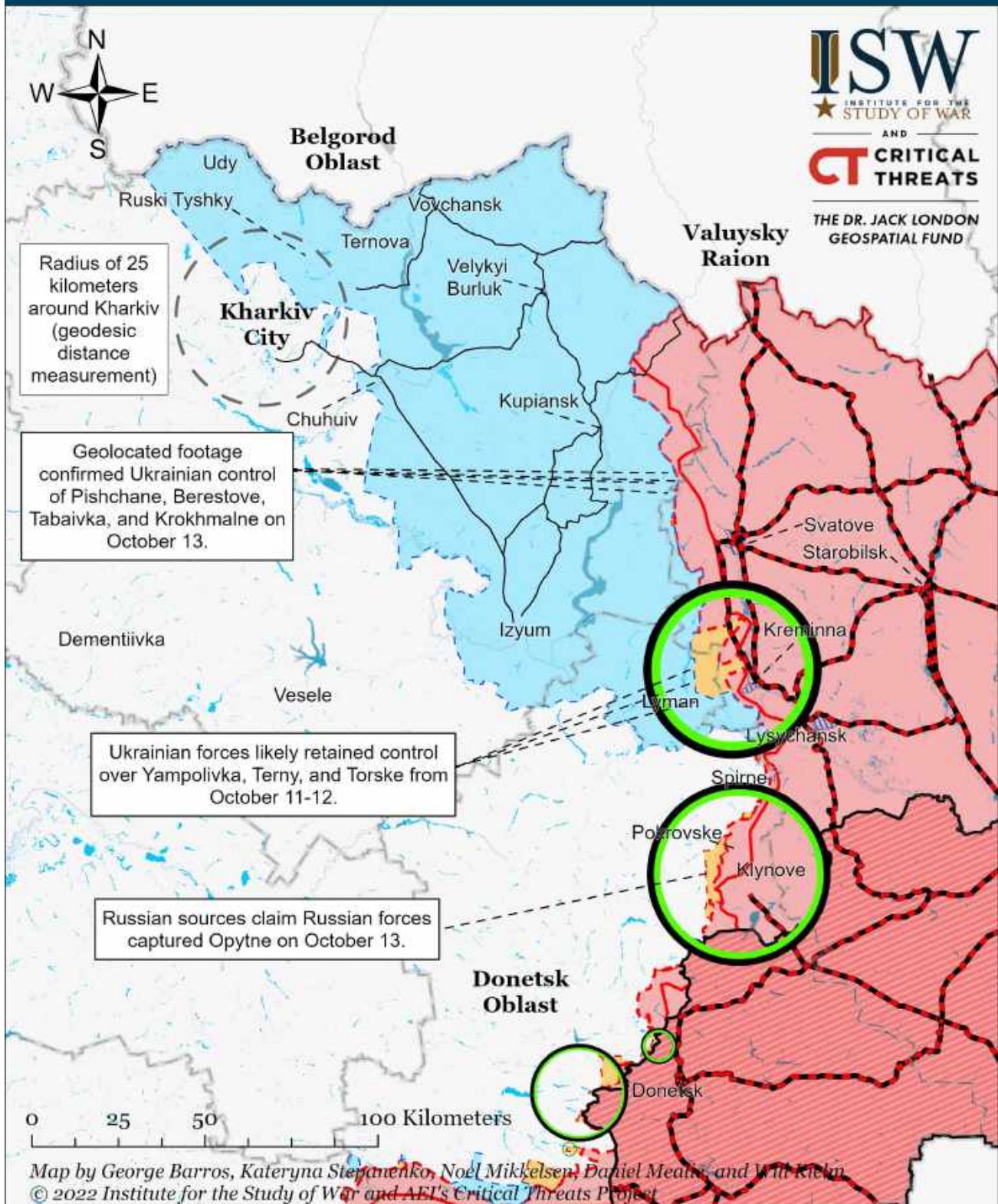


- |   |   |  |
|---|---|--|
| Significant Fighting in the past 24 Hours | Russian-controlled Ukrainian Territory before February 24 | Claimed Russian Control over Ukrainian Territory |
| Key Ukrainian Roads                       | Assessed Russian Advances in Ukraine*                     | Claimed Ukrainian Counteroffensives              |
| Russian Ground Lines of Communication     | Assessed Russian-controlled Ukrainian Territory           | Reported Ukrainian Partisan Warfare              |

\* Assessed Russian advances are areas where ISW assesses Russian forces have operated in or launched attacks against but do not control.



# Assessed Control of Terrain Around Kharkiv as of October 15, 2022, 3:00 PM ET

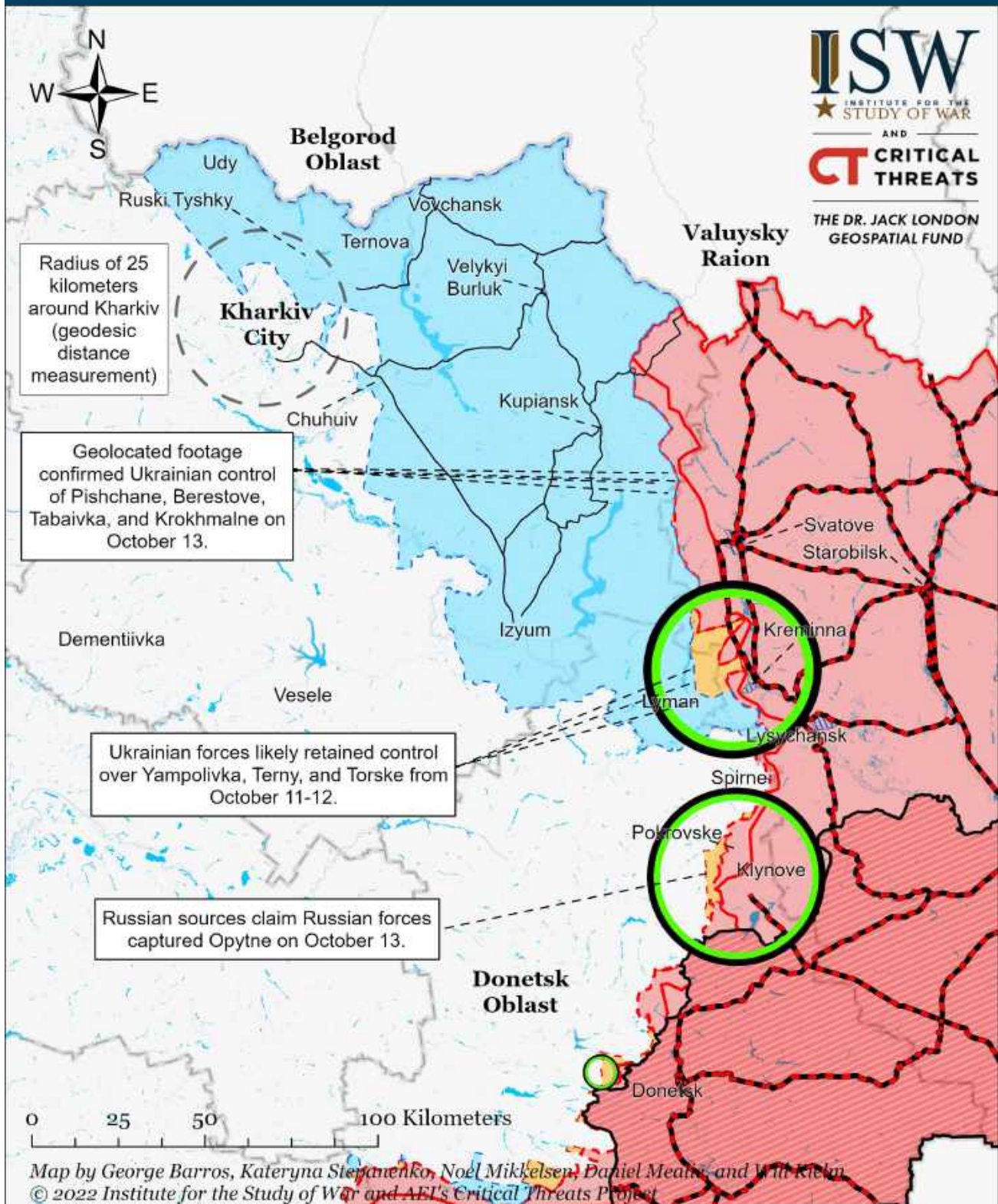


Map by George Barros, Kateryna Stepanenko, Noel Mikkelsen, Daniel Meade, and Will Klein  
© 2022 Institute for the Study of War and AFI's Critical Threats Project

- |  |   |  |   |  |  |
|--|---|--|---|--|--|
|  | Significant Fighting in the past 24 Hours |  | Russian-controlled Ukrainian Territory before February 24 |  | Claimed Russian Control over Ukrainian Territory |
|  | Key Ukrainian Roads                       |  | Assessed Russian Advances in Ukraine*                     |  | Claimed Ukrainian Counteroffensives              |
|  | Russian Ground Lines of Communication     |  | Assessed Russian-controlled Ukrainian Territory           |  | Reported Ukrainian Partisan Warfare              |

\* Assessed Russian advances are areas where ISW assesses Russian forces have operated in or launched attacks against but do not control.

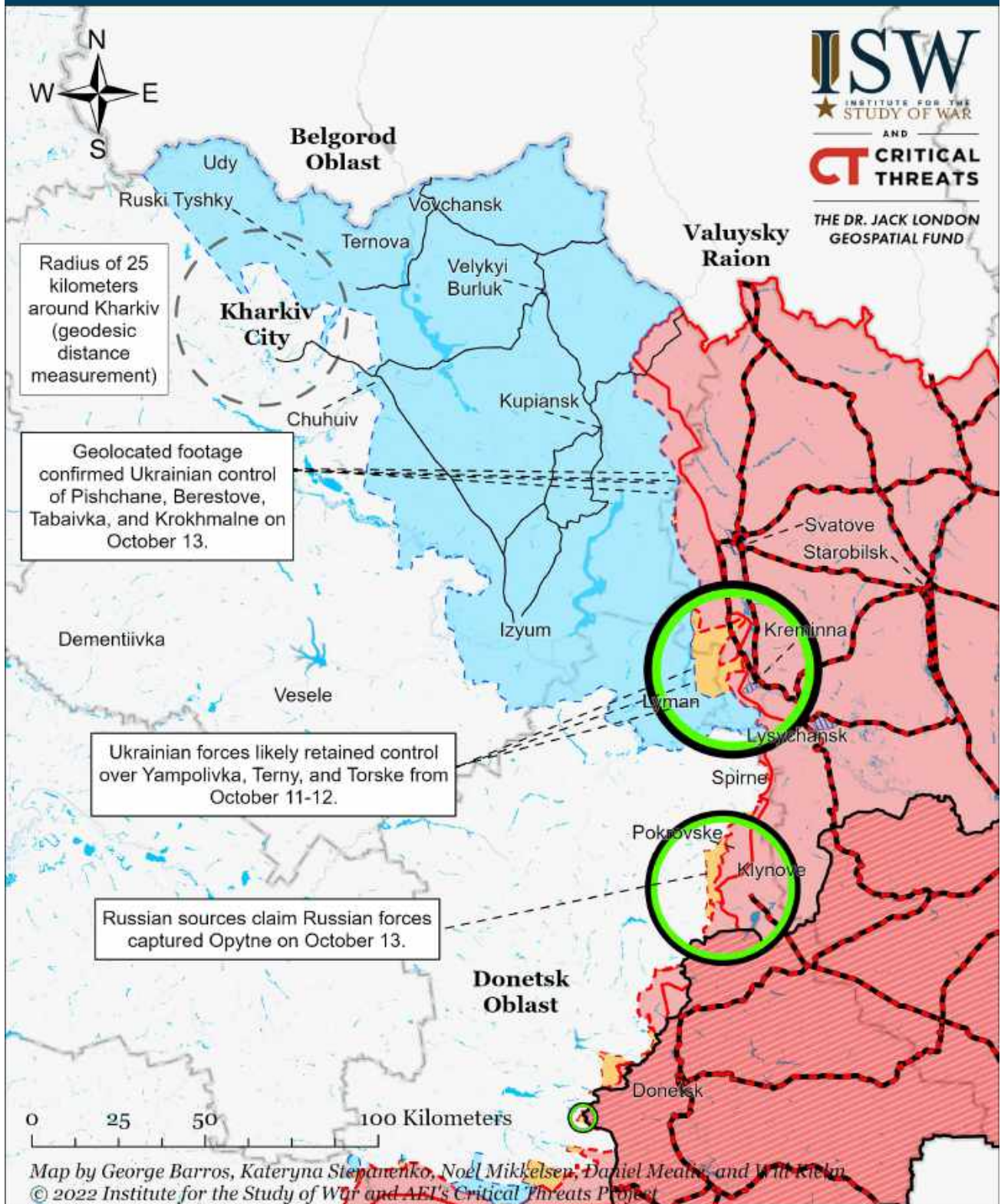
# Assessed Control of Terrain Around Kharkiv as of October 14, 2022, 3:00 PM ET



- Significant Fighting in the past 24 Hours
- Key Ukrainian Roads
- Russian Ground Lines of Communication
- Russian-controlled Ukrainian Territory before February 24
- Assessed Russian Advances in Ukraine\*
- Assessed Russian-controlled Ukrainian Territory
- Claimed Russian Control over Ukrainian Territory
- Claimed Ukrainian Counteroffensives
- Reported Ukrainian Partisan Warfare

\* Assessed Russian advances are areas where ISW assesses Russian forces have operated in or launched attacks against but do not control.

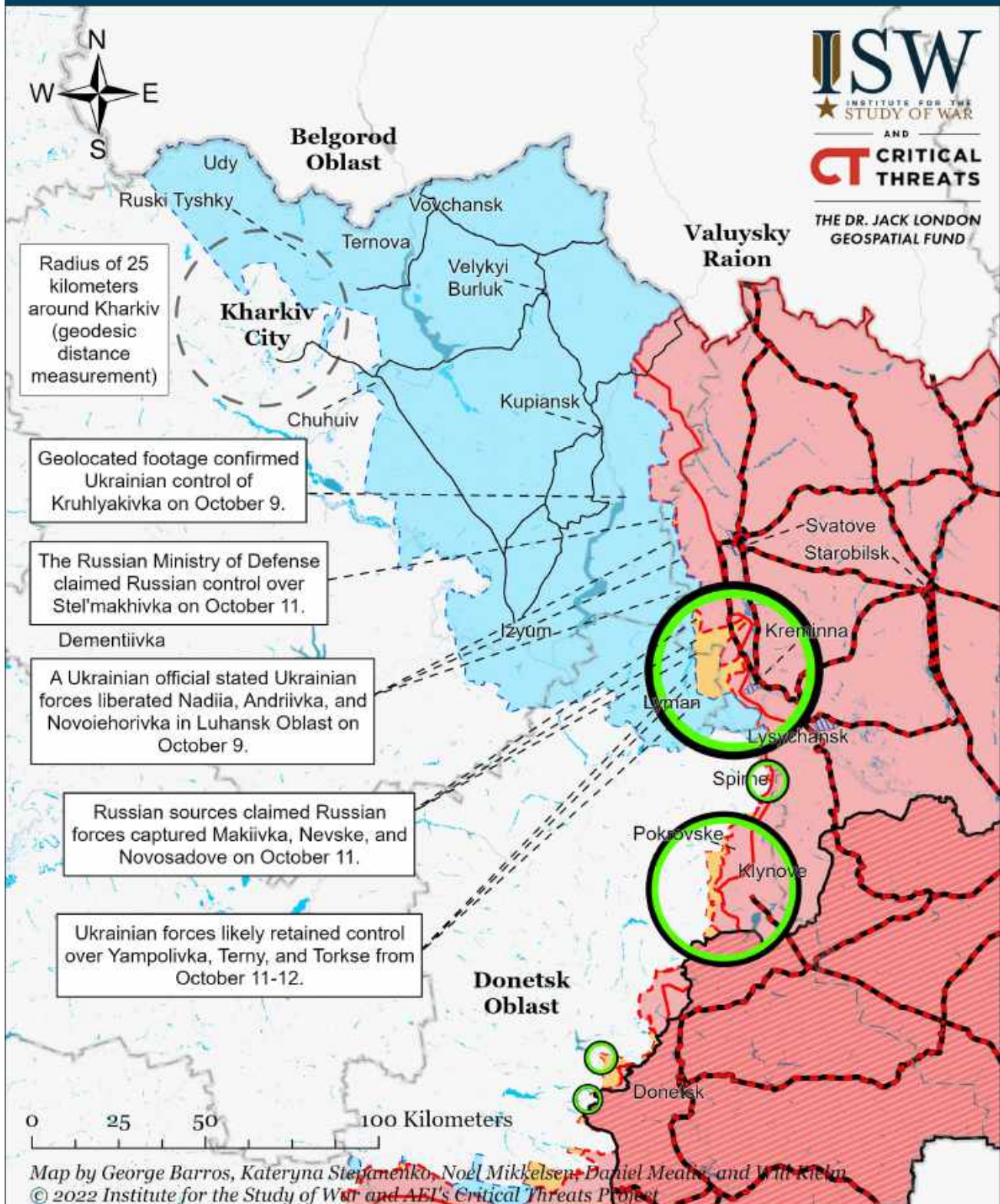
# Assessed Control of Terrain Around Kharkiv as of October 13, 2022, 3:00 PM ET



- Significant Fighting in the past 24 Hours
- Key Ukrainian Roads
- Russian Ground Lines of Communication
- ▭ Russian-controlled Ukrainian Territory before February 24
- - - Assessed Russian Advances in Ukraine\*
- ▭ Assessed Russian-controlled Ukrainian Territory
- ▭ Claimed Russian Control over Ukrainian Territory
- - - Claimed Ukrainian Counteroffensives
- ▨ Reported Ukrainian Partisan Warfare

\* Assessed Russian advances are areas where ISW assesses Russian forces have operated in or launched attacks against but do not control.

# Assessed Control of Terrain Around Kharkiv as of October 12, 2022, 3:00 PM ET



- |   |   |  |
|---|---|--|
| Significant Fighting in the past 24 Hours | Russian-controlled Ukrainian Territory before February 24 | Claimed Russian Control over Ukrainian Territory |
| Key Ukrainian Roads                       | Assessed Russian Advances in Ukraine*                     | Claimed Ukrainian Counteroffensives              |
| Russian Ground Lines of Communication     | Assessed Russian-controlled Ukrainian Territory           | Reported Ukrainian Partisan Warfare              |

\* Assessed Russian advances are areas where ISW assesses Russian forces have operated in or launched attacks against but do not control.