

Assessed Control of Terrain in Ukraine and Main Russian Maneuver Axes as of December 4, 2022, 3:00 PM ET



Map by George Barros, Kateryna Stepanenko, Noel Mikkelsen, Daniel Mealie, and Will Kiellm
© 2022 Institute for the Study of War and AEI's Critical Threats Project

* Assessed Russian advances are areas where ISW assesses Russian forces have operated in or launched attacks against but do not control.

Assessed Control of Terrain in Ukraine and Main Russian Maneuver Axes as of December 3, 2022, 3:00 PM ET



Map by George Barros, Kateryna Stepanenko, Noel Mikkelsen, Daniel Mealie, and Will Kielm
© 2022 Institute for the Study of War and AEI's Critical Threats Project

* Assessed Russian advances are areas where ISW assesses Russian forces have operated in or launched attacks against but do not control.

Assessed Control of Terrain in Ukraine and Main Russian Maneuver Axes as of December 2, 2022, 3:00 PM ET



Map by George Barros, Kateryna Stepanenko, Noel Mikkelsen, Daniel Mealie, and Will Kielm
© 2022 Institute for the Study of War and AEI's Critical Threats Project

* Assessed Russian advances are areas where ISW assesses Russian forces have operated in or launched attacks against but do not control.

Assessed Control of Terrain in Ukraine and Main Russian Maneuver Axes as of December 1, 2022, 3:00 PM ET



Map by George Barros, Kateryna Stepanenko, Noel Mikkelsen, Daniel Mealie, and Will Kielm
© 2022 Institute for the Study of War and AEI's Critical Threats Project

* Assessed Russian advances are areas where ISW assesses Russian forces have operated in or launched attacks against but do not control.

Assessed Control of Terrain in Ukraine and Main Russian Maneuver Axes as of November 30, 2022, 3:00 PM ET



Map by George Barros, Kateryna Stepanenko, Noel Mikkelsen, Daniel Mealie, and Will Kielm
© 2022 Institute for the Study of War and AEI's Critical Threats Project

* Assessed Russian advances are areas where ISW assesses Russian forces have operated in or launched attacks against but do not control.

Assessed Control of Terrain in Ukraine and Main Russian Maneuver Axes as of November 29, 2022, 3:00 PM ET



Map by George Barros, Kateryna Stepanenko, Noel Mikkelsen, Daniel Mealie, and Will Kielm
© 2022 Institute for the Study of War and AEI's Critical Threats Project

* Assessed Russian advances are areas where ISW assesses Russian forces have operated in or launched attacks against but do not control.

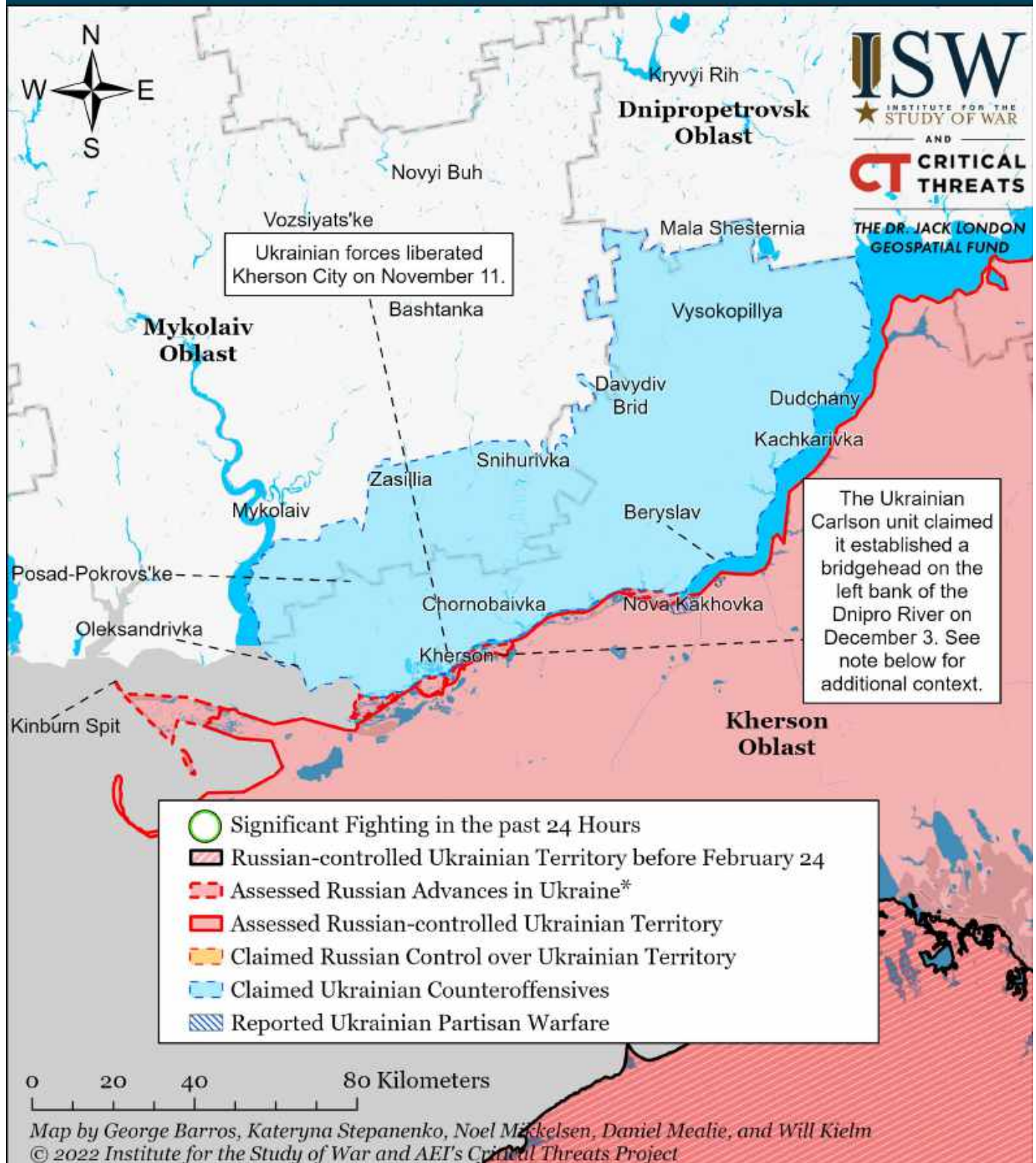
Assessed Control of Terrain in Ukraine and Main Russian Maneuver Axes as of November 28, 2022, 3:00 PM ET



Map by George Barros, Kateryna Stepanenko, Noel Mikkelsen, Daniel Mealie, and Will Kiellm
© 2022 Institute for the Study of War and AEI's Critical Threats Project

* Assessed Russian advances are areas where ISW assesses Russian forces have operated in or launched attacks against but do not control.

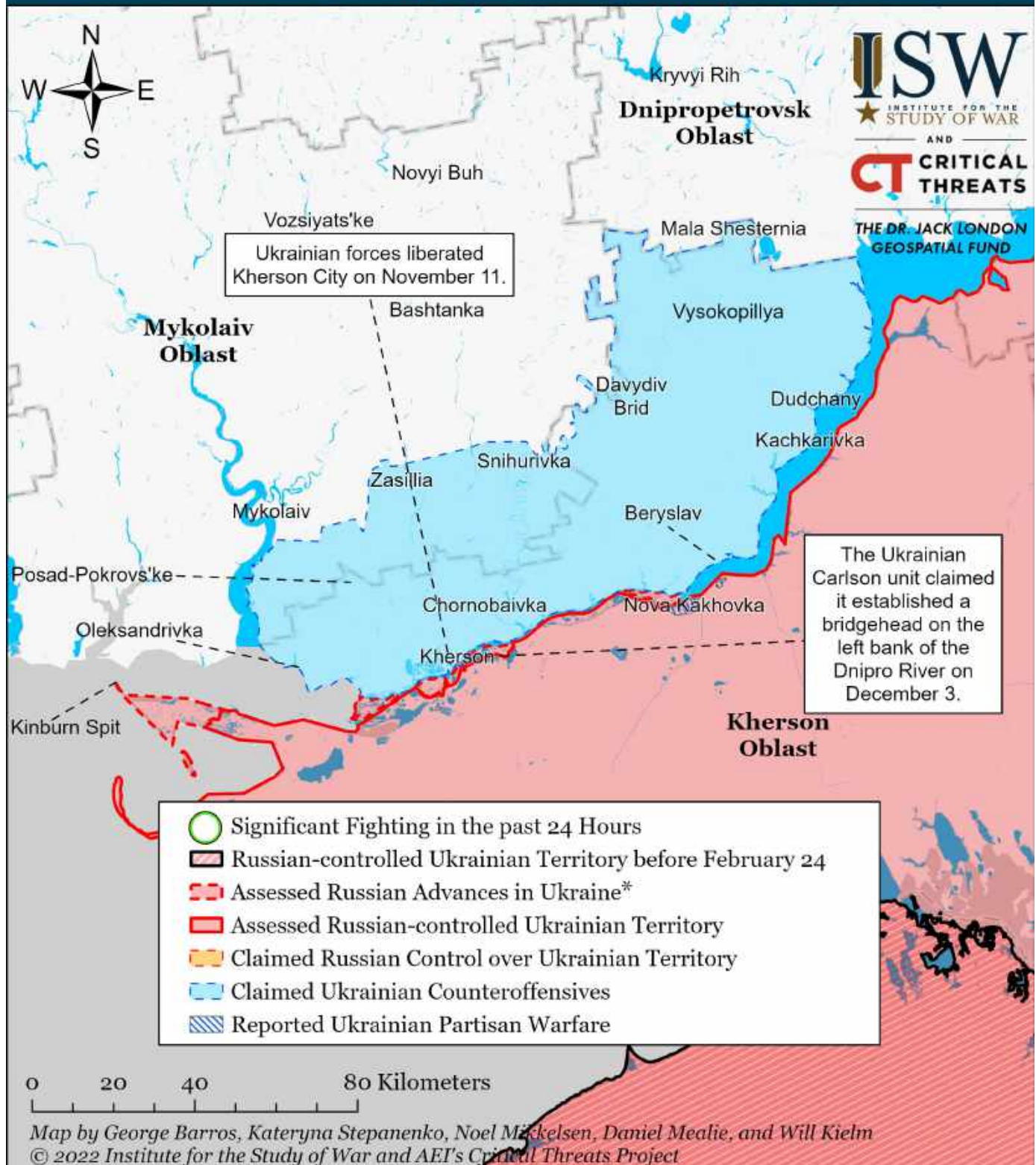
Assessed Control of Terrain Around Kherson and Mykolaiv as of December 4, 2022, 3:00 PM ET



* Assessed Russian advances are areas where ISW assesses Russian forces have operated in or launched attacks against but do not control.

Light reconnaissance elements of the Ukrainian Carlson special volunteer unit placed a Ukrainian flag on a tower on wetlands on the left Bank side of the Dniro River approximately 600 meters south of Kherson City and claimed the area will become a Ukrainian bridgehead that will support future operations to further liberate southern Kherson on December 3. ISW does not assess that Ukrainian forces have established a bridgehead or lodgment in this location as Carlson claimed as of December 4. The Carlson element's ability to operate in the area uncontested and the lack of observed Russian fortifications or defensive forces in the area indicates that Russian forces do not exercise full control over the area. Russian control lines are likely south of the Konka River.

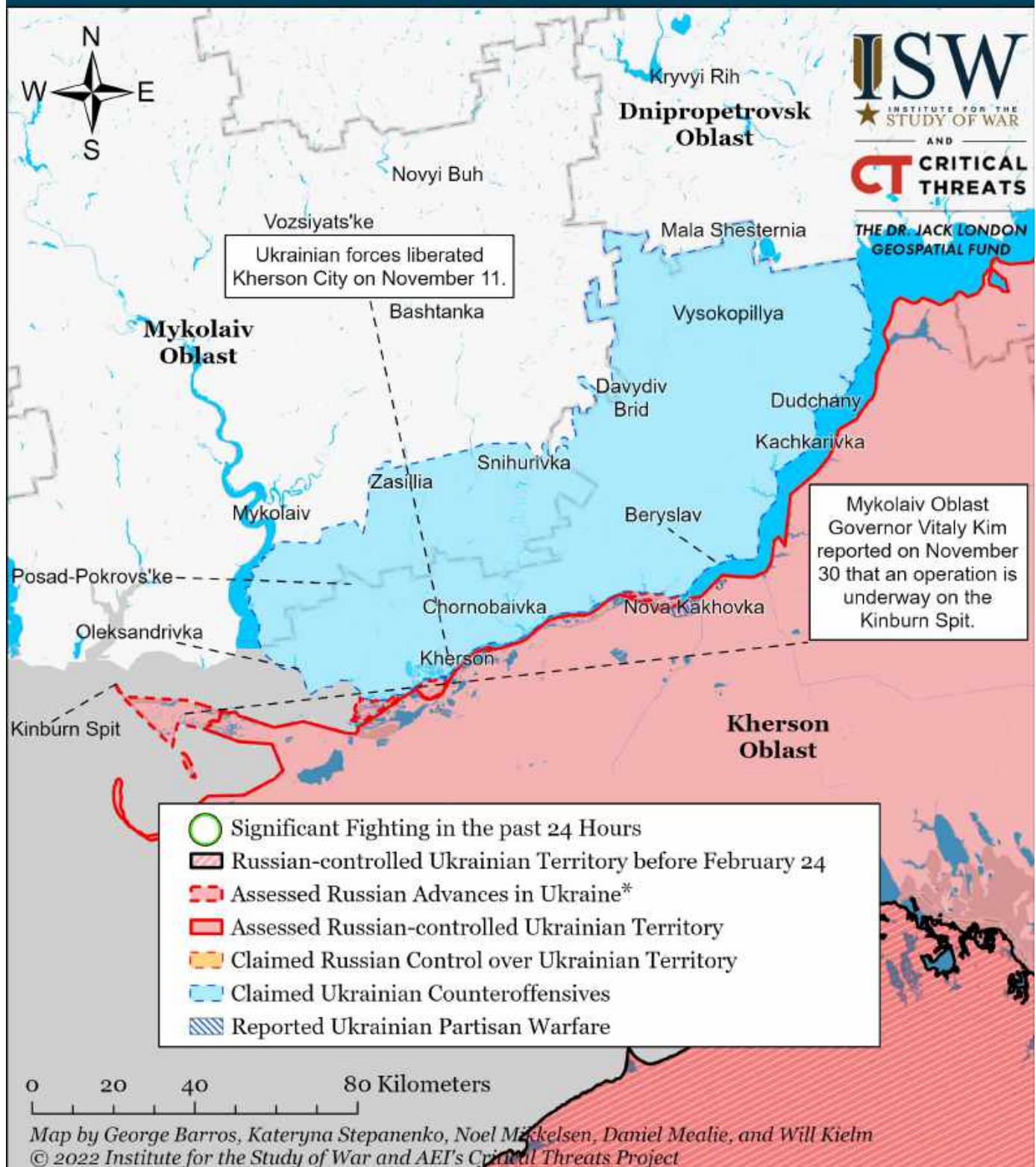
Assessed Control of Terrain Around Kherson and Mykolaiv as of December 3, 2022, 3:00 PM ET



* Assessed Russian advances are areas where ISW assesses Russian forces have operated in or launched attacks against but do not control.

ISW expanded Ukrainian counteroffensives to all of right bank Kherson Oblast on November 11 based on geolocated footage of Ukrainian forces liberating Kherson City and settlements north of the Dnipro River. Russian forces partially destroyed the Kakhovka and Antonivsky bridges, which indicates that Russian forces are not intending to hold positions on the right (western) bank. ISW assesses with high confidence that Ukrainian forces will clear the remaining settlements along the western bank of the river in the coming days, although some Russian troops may have remained behind to conduct partisan operations. Russian sources indicated on November 21 that Ukrainian forces are holding positions on Karantynny Island near Kherson City, but it is unclear if Ukrainian forces regained control over other islands along the Dnipro River.

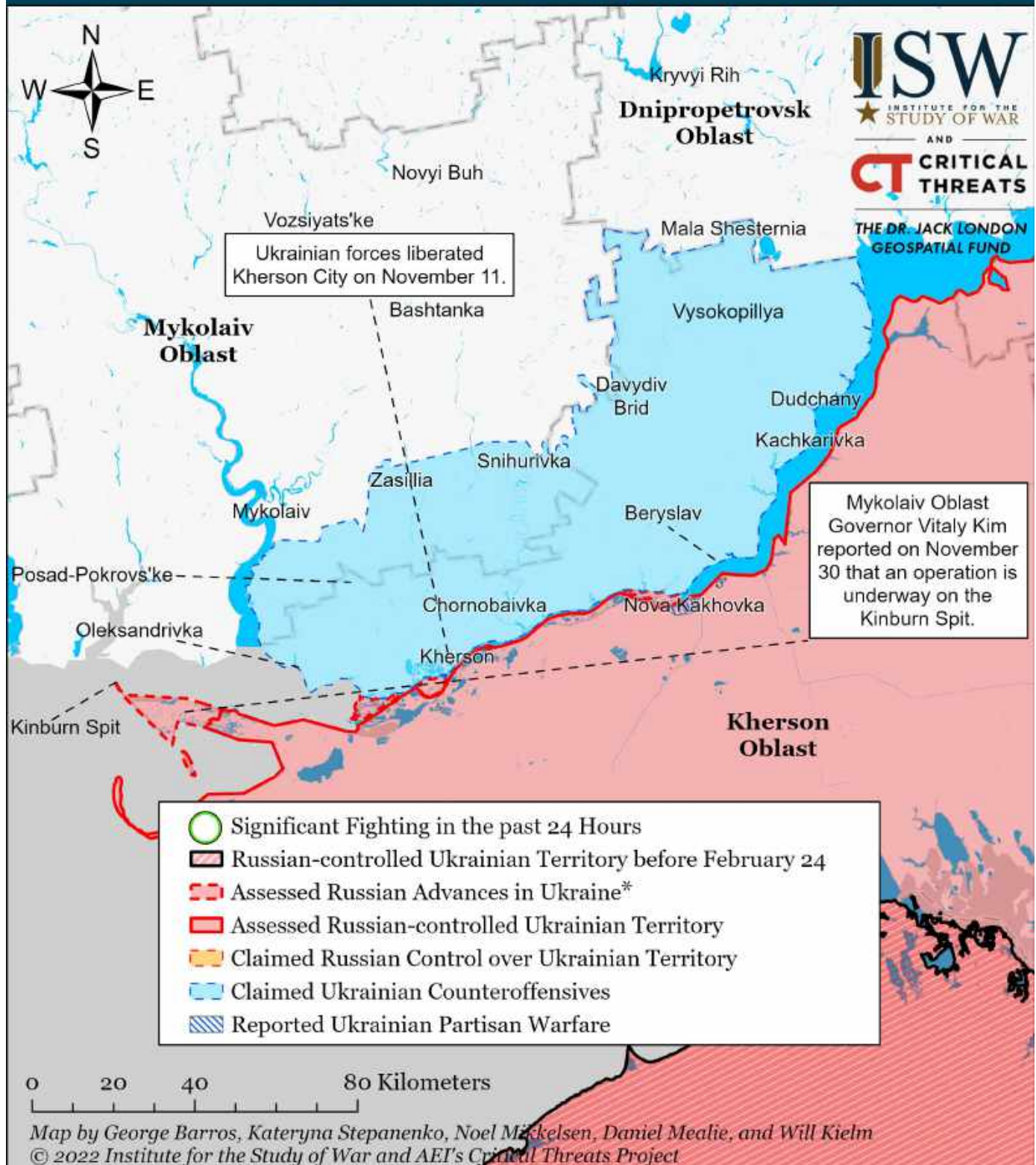
Assessed Control of Terrain Around Kherson and Mykolaiv as of December 2, 2022, 3:00 PM ET



* Assessed Russian advances are areas where ISW assesses Russian forces have operated in or launched attacks against but do not control.

ISW expanded Ukrainian counteroffensives to all of right bank Kherson Oblast on November 11 based on geolocated footage of Ukrainian forces liberating Kherson City and settlements north of the Dniro River. Russian forces partially destroyed the Kakhovka and Antonivsky bridges, which indicates that Russian forces are not intending to hold positions on the right (western) bank. ISW assesses with high confidence that Ukrainian forces will clear the remaining settlements along the western bank of the river in the coming days, although some Russian troops may have remained behind to conduct partisan operations. Russian sources indicated on November 21 that Ukrainian forces are holding positions on Karantynny Island near Kherson City, but it is unclear if Ukrainian forces regained control over other islands along the Dniro River.

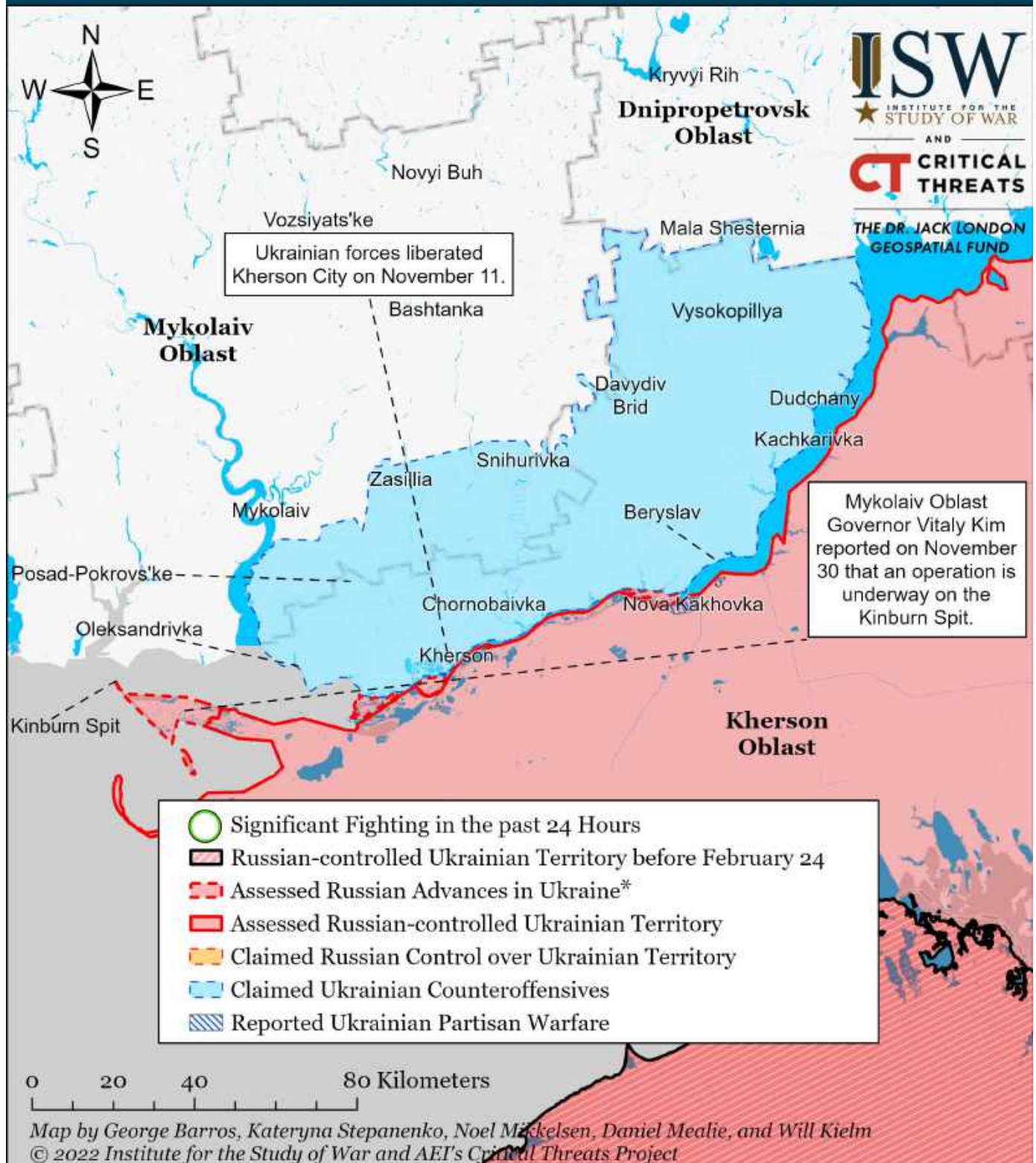
Assessed Control of Terrain Around Kherson and Mykolaiv as of December 1, 2022, 3:00 PM ET



* Assessed Russian advances are areas where ISW assesses Russian forces have operated in or launched attacks against but do not control.

ISW expanded Ukrainian counteroffensives to all of right bank Kherson Oblast on November 11 based on geolocated footage of Ukrainian forces liberating Kherson City and settlements north of the Dniro River. Russian forces partially destroyed the Kakhovka and Antonivsky bridges, which indicates that Russian forces are not intending to hold positions on the right (western) bank. ISW assesses with high confidence that Ukrainian forces will clear the remaining settlements along the western bank of the river in the coming days, although some Russian troops may have remained behind to conduct partisan operations. Russian sources indicated on November 21 that Ukrainian forces are holding positions on Karantynny Island near Kherson City, but it is unclear if Ukrainian forces regained control over other islands along the Dniro River.

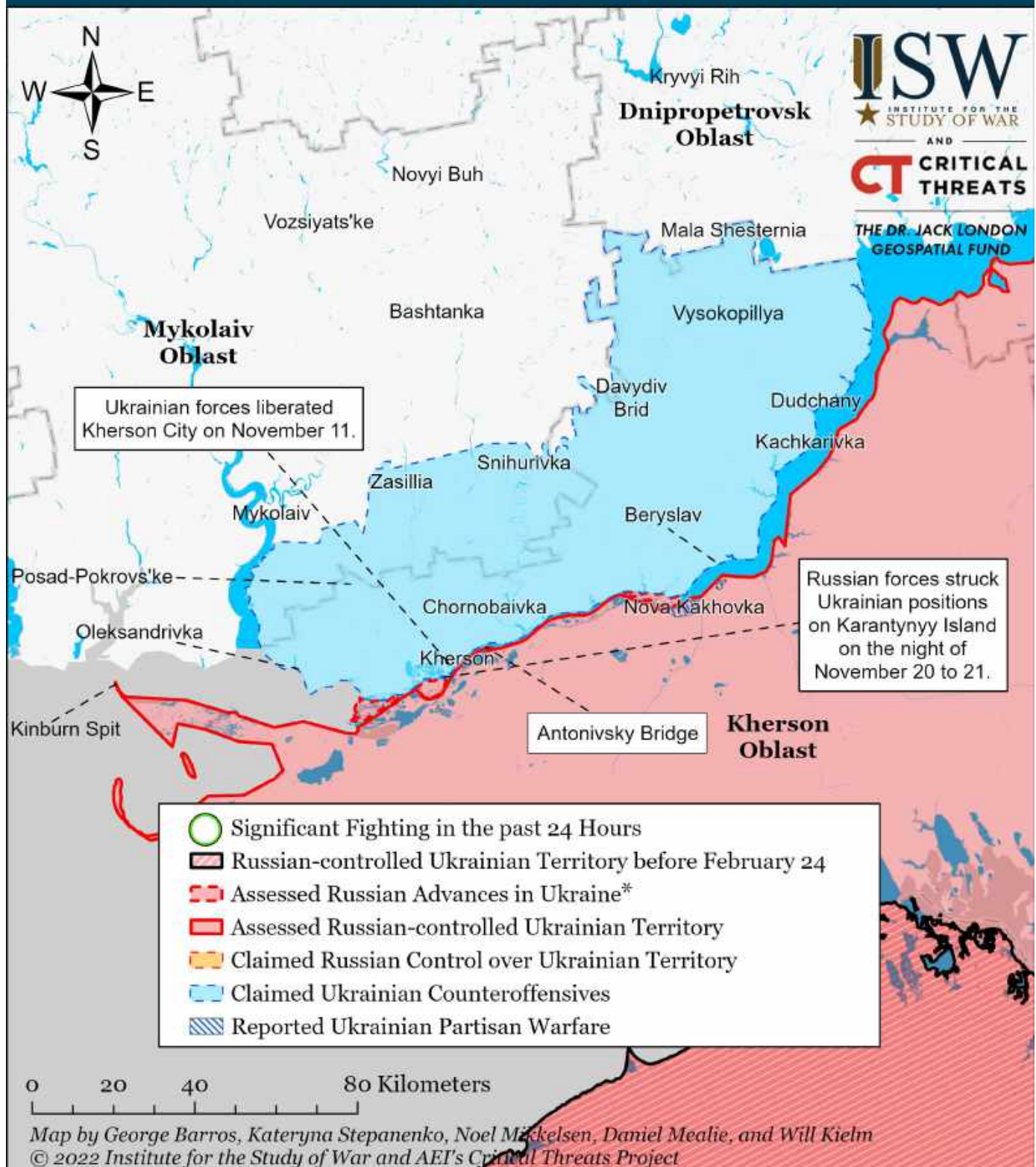
Assessed Control of Terrain Around Kherson and Mykolaiv as of November 30, 2022, 3:00 PM ET



* Assessed Russian advances are areas where ISW assesses Russian forces have operated in or launched attacks against but do not control.

ISW expanded Ukrainian counteroffensives to all of right bank Kherson Oblast on November 11 based on geolocated footage of Ukrainian forces liberating Kherson City and settlements north of the Dniro River. Russian forces partially destroyed the Kakhovka and Antonivsky bridges, which indicates that Russian forces are not intending to hold positions on the right (western) bank. ISW assesses with high confidence that Ukrainian forces will clear the remaining settlements along the western bank of the river in the coming days, although some Russian troops may have remained behind to conduct partisan operations. Russian sources indicated on November 21 that Ukrainian forces are holding positions on Karantynny Island near Kherson City, but it is unclear if Ukrainian forces regained control over other islands along the Dniro River.

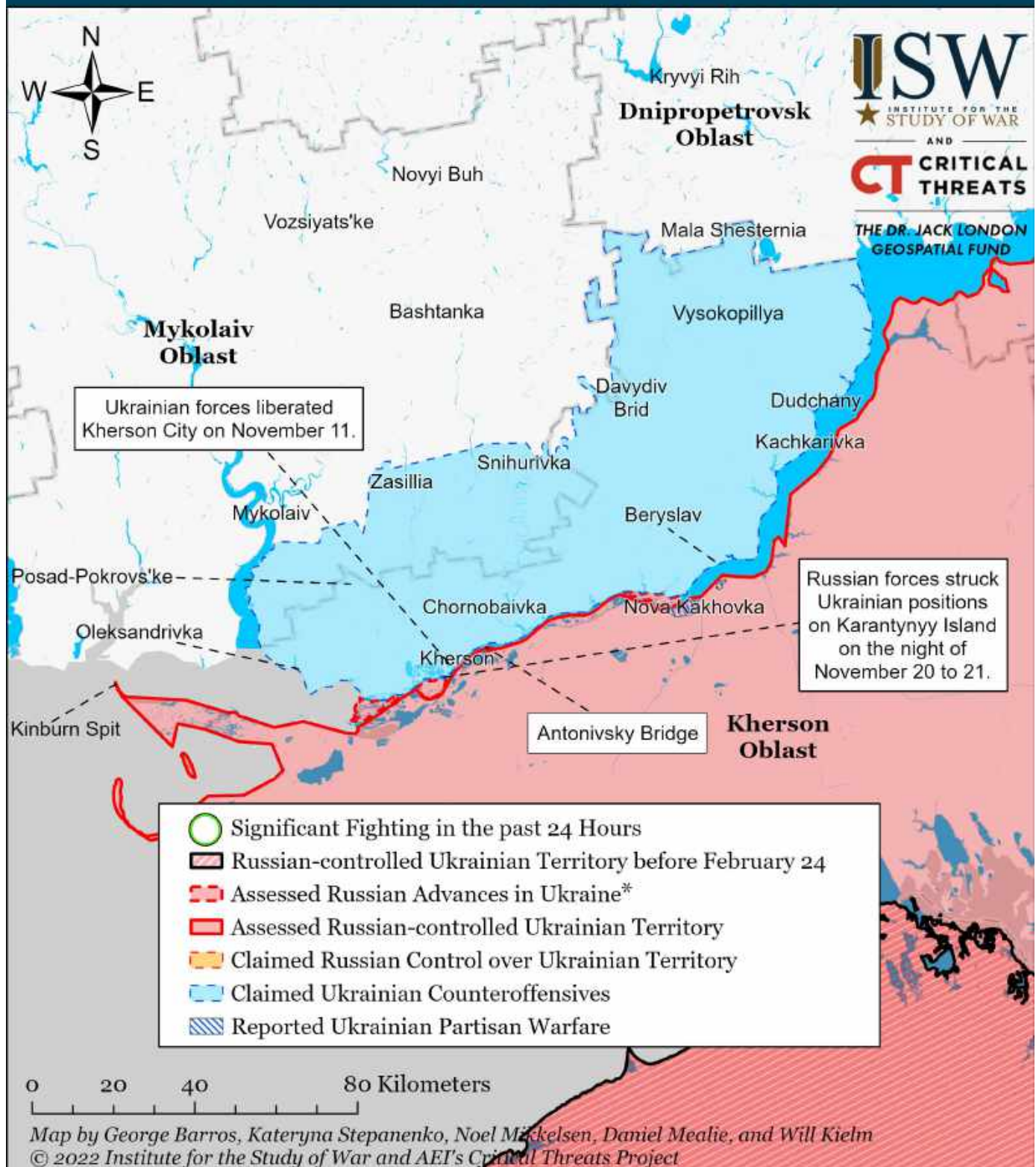
Assessed Control of Terrain Around Kherson and Mykolaiv as of November 29, 2022, 3:00 PM ET



* Assessed Russian advances are areas where ISW assesses Russian forces have operated in or launched attacks against but do not control.

ISW expanded Ukrainian counteroffensives to all of right bank Kherson Oblast on November 11 based on geolocated footage of Ukrainian forces liberating Kherson City and settlements north of the Dnipro River. Russian forces partially destroyed the Kakhovka and Antonivsky bridges, which indicates that Russian forces are not intending to hold positions on the right (western) bank. ISW assesses with high confidence that Ukrainian forces will clear the remaining settlements along the western bank of the river in the coming days, although some Russian troops may have remained behind to conduct partisan operations. Russian sources indicated on November 21 that Ukrainian forces are holding positions on Karantynny Island near Kherson City, but it is unclear if Ukrainian forces regained control over other islands along the Dnipro River.

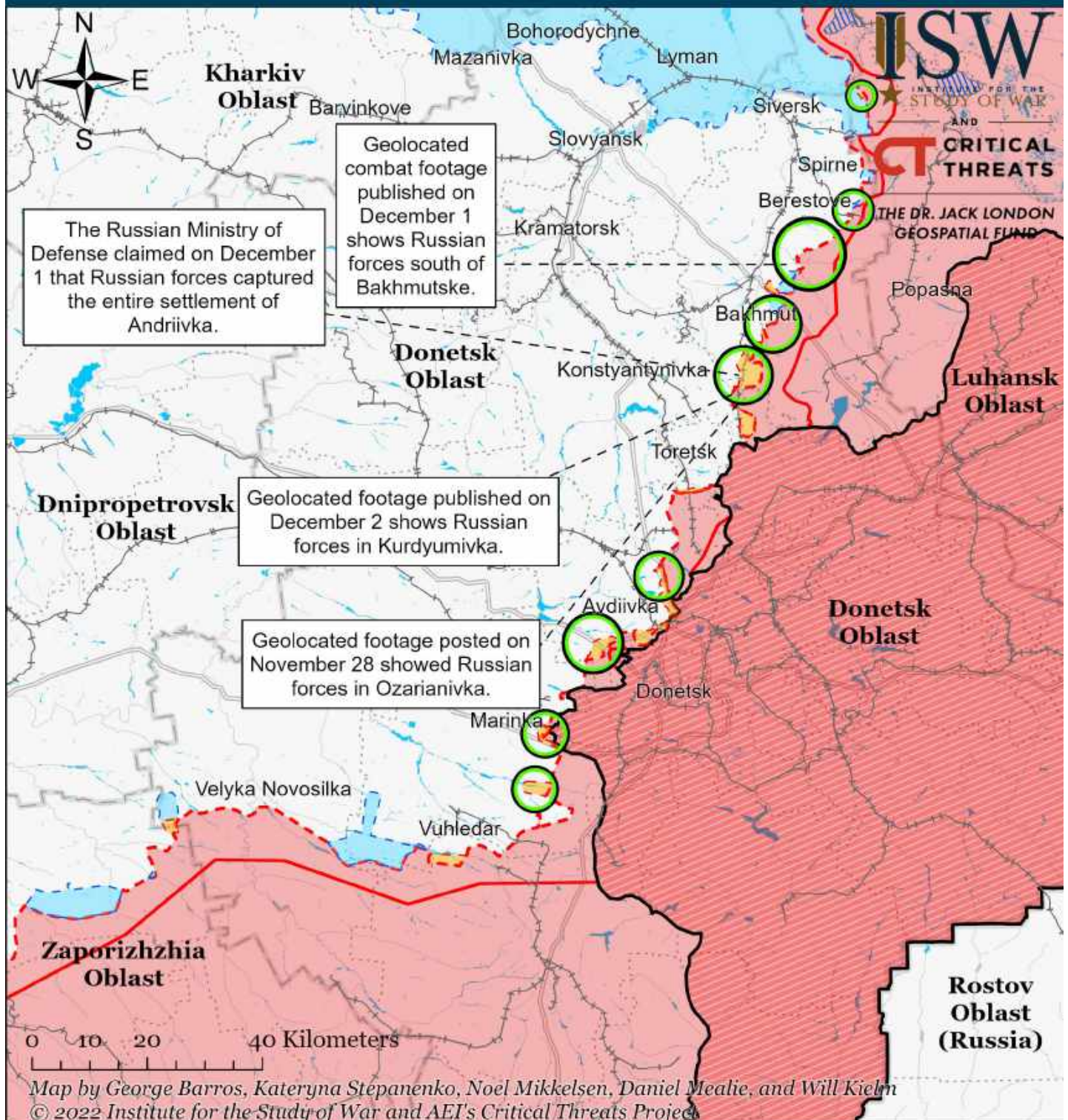
Assessed Control of Terrain Around Kherson and Mykolaiv as of November 28, 2022, 3:00 PM ET



* Assessed Russian advances are areas where ISW assesses Russian forces have operated in or launched attacks against but do not control.

ISW expanded Ukrainian counteroffensives to all of right bank Kherson Oblast on November 11 based on geolocated footage of Ukrainian forces liberating Kherson City and settlements north of the Dniro River. Russian forces partially destroyed the Kakhovka and Antonivsky bridges, which indicates that Russian forces are not intending to hold positions on the right (western) bank. ISW assesses with high confidence that Ukrainian forces will clear the remaining settlements along the western bank of the river in the coming days, although some Russian troops may have remained behind to conduct partisan operations. Russian sources indicated on November 21 that Ukrainian forces are holding positions on Karantynnyy Island near Kherson City, but it is unclear if Ukrainian forces regained control over other islands along the Dniro River.

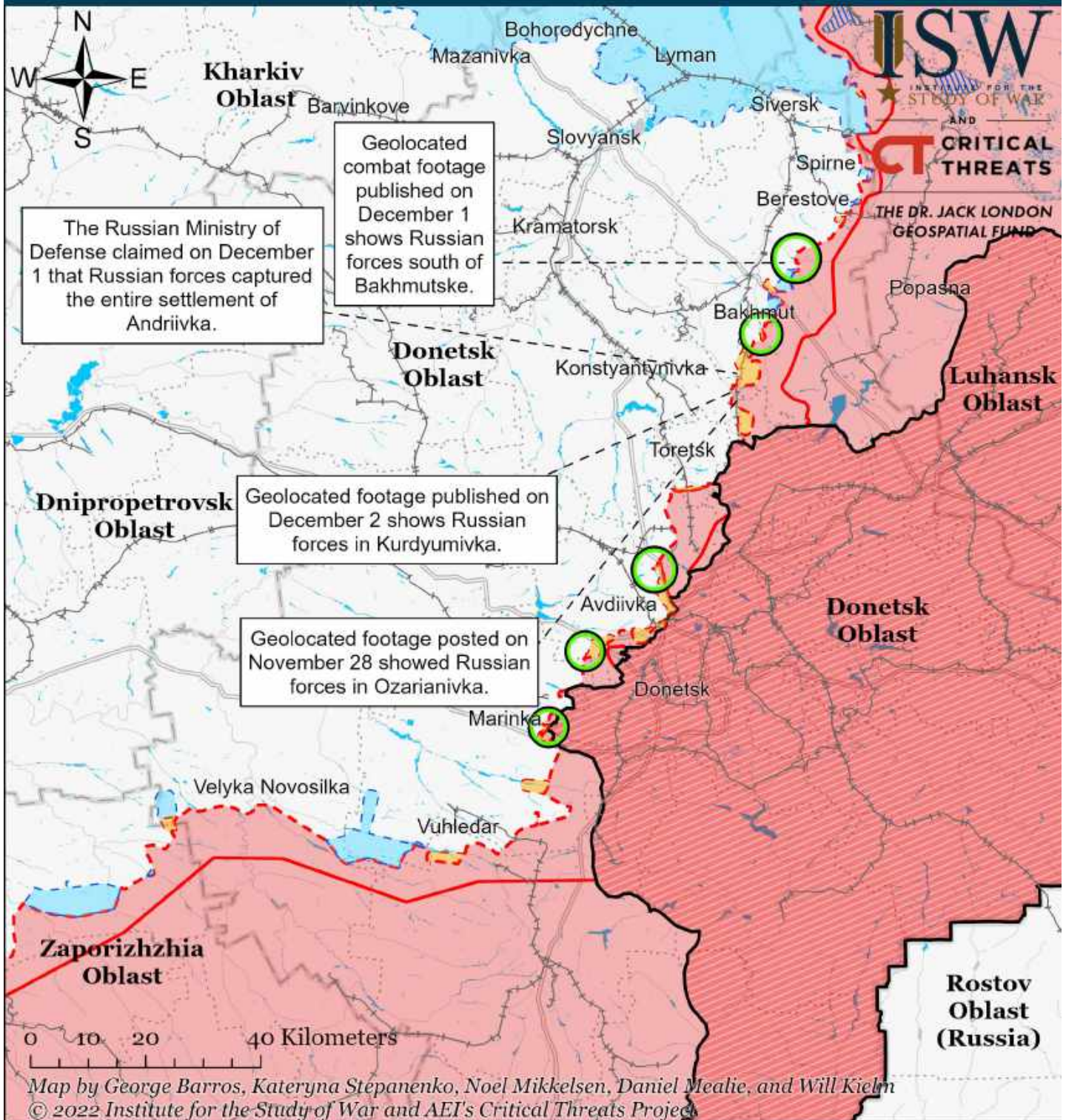
Assessed Control of Terrain Around Donetsk as of December 4, 2022, 3:00 PM ET



- Significant Fighting in the past 24 Hours
- Assessed Russian-controlled Ukrainian Territory
- Reported Ukrainian Partisan Warfare
- Russian-controlled Ukrainian Territory before February 24
- Claimed Russian Control over Ukrainian Territory
- Major Railroads
- Assessed Russian Advances in Ukraine*
- Claimed Ukrainian Counteroffensives

* Assessed Russian advances are areas where ISW assesses Russian forces have operated in or launched attacks against but do not control.

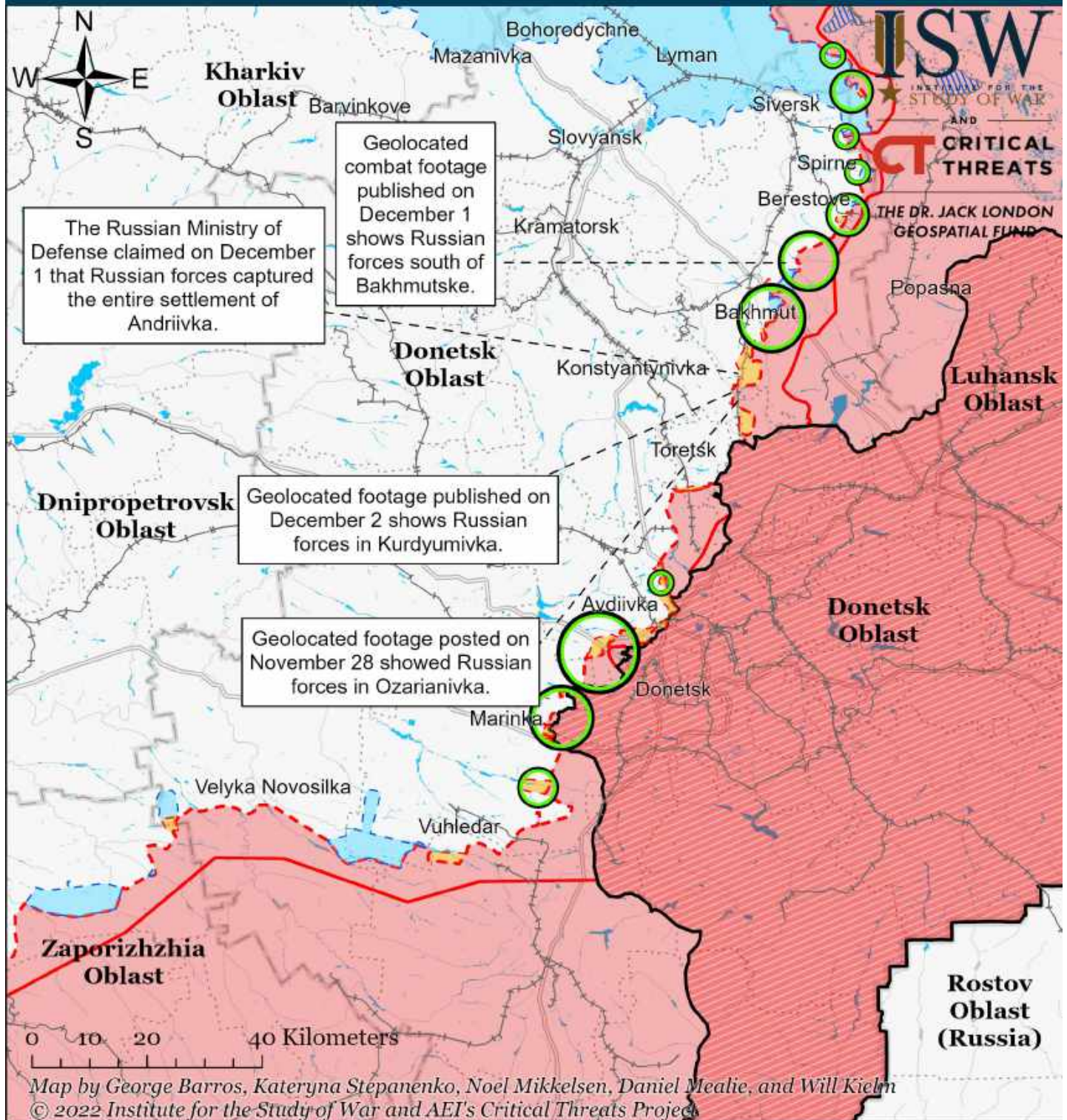
Assessed Control of Terrain Around Donetsk as of December 3, 2022, 3:00 PM ET



- Significant Fighting in the past 24 Hours
- Assessed Russian-controlled Ukrainian Territory
- ▨ Reported Ukrainian Partisan Warfare
- ▭ Russian-controlled Ukrainian Territory before February 24
- ▭ Claimed Russian Control over Ukrainian Territory
- Major Railroads
- - - Assessed Russian Advances in Ukraine*
- ▭ Claimed Ukrainian Counteroffensives

* Assessed Russian advances are areas where ISW assesses Russian forces have operated in or launched attacks against but do not control.

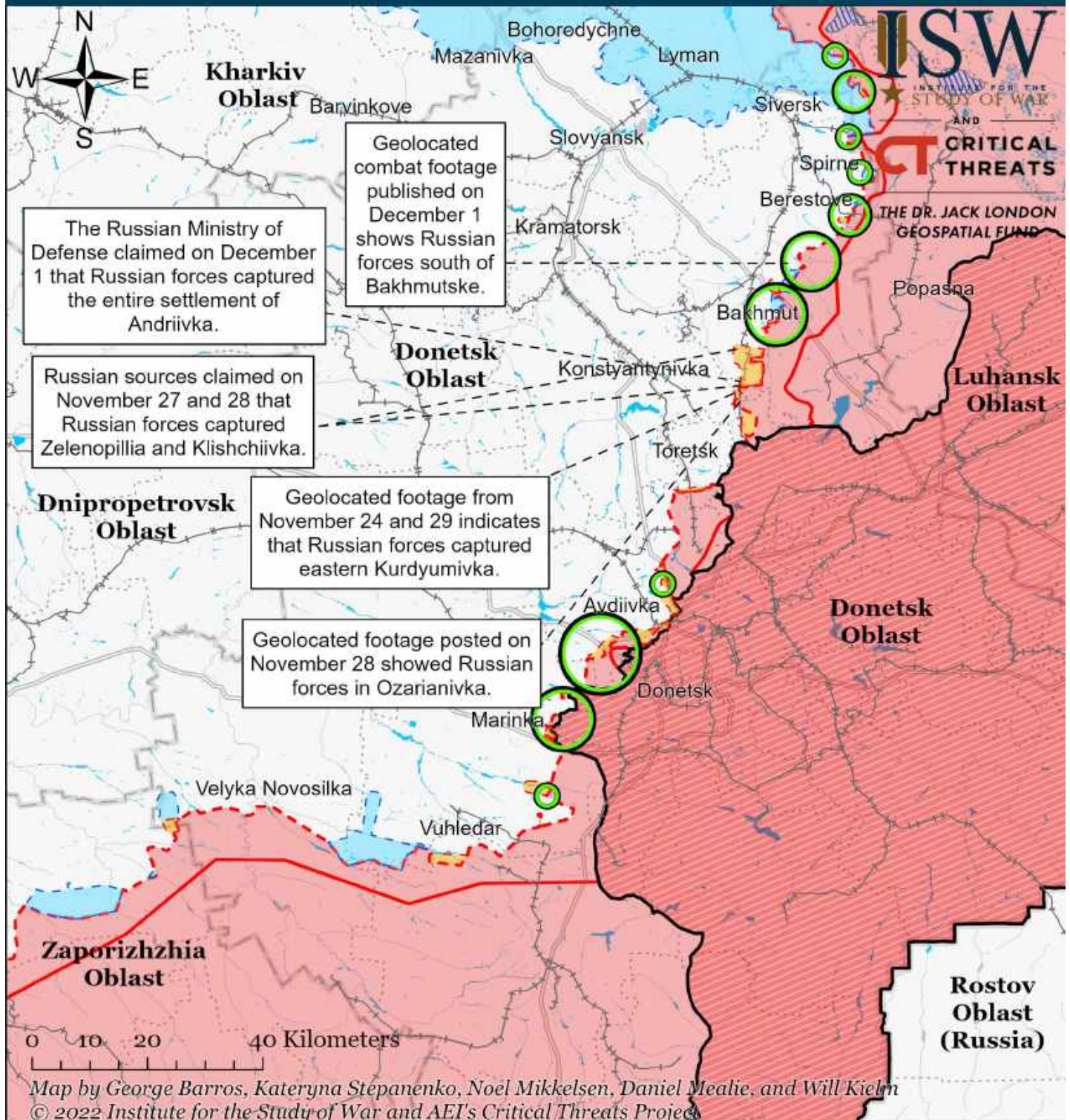
Assessed Control of Terrain Around Donetsk as of December 2, 2022, 3:00 PM ET



- Significant Fighting in the past 24 Hours
- Assessed Russian-controlled Ukrainian Territory
- Reported Ukrainian Partisan Warfare
- Russian-controlled Ukrainian Territory before February 24
- Claimed Russian Control over Ukrainian Territory
- Major Railroads
- Assessed Russian Advances in Ukraine*
- Claimed Ukrainian Counteroffensives

* Assessed Russian advances are areas where ISW assesses Russian forces have operated in or launched attacks against but do not control.

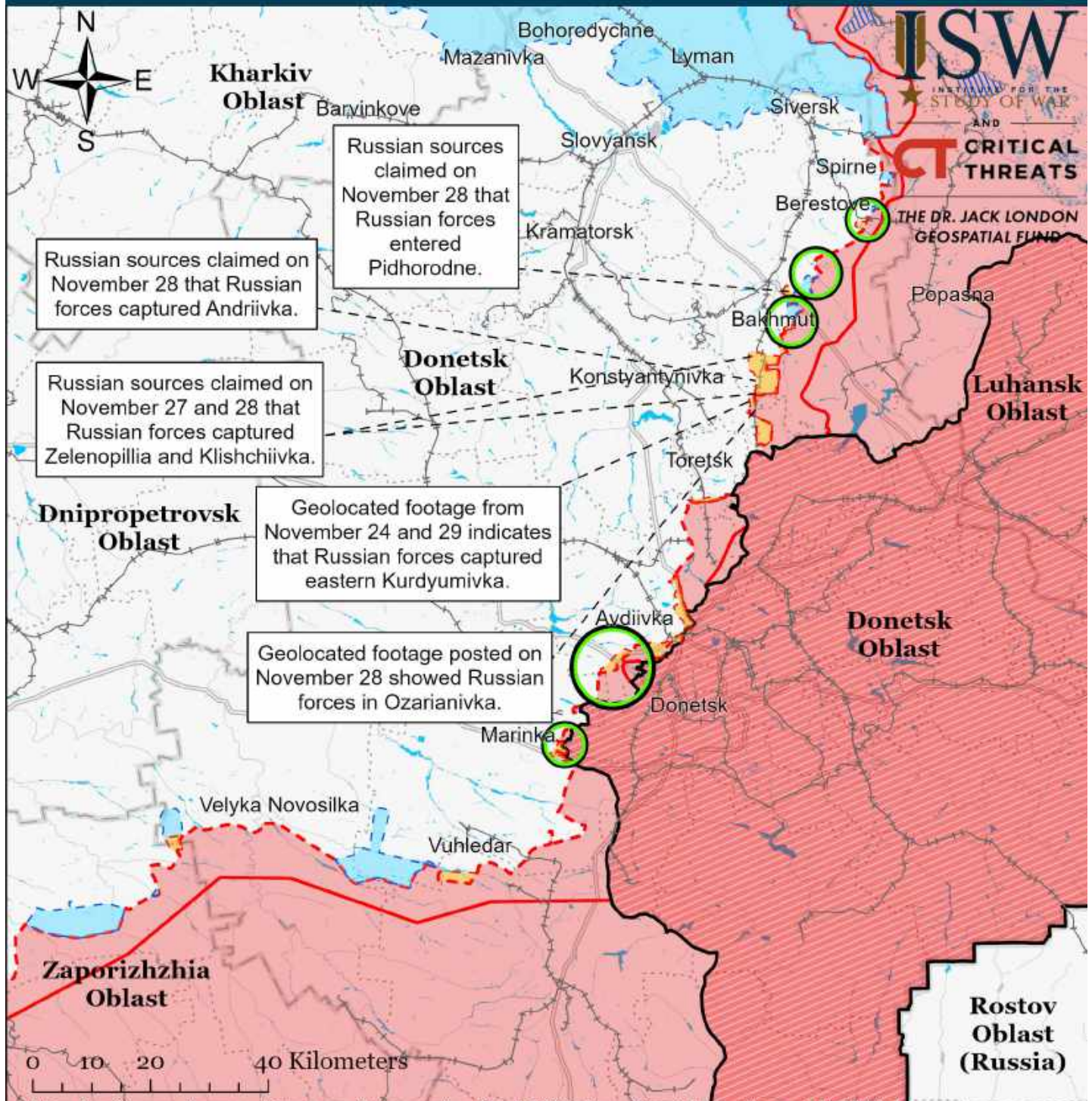
Assessed Control of Terrain Around Donetsk as of December 1, 2022, 3:00 PM ET



- Significant Fighting in the past 24 Hours
- Assessed Russian-controlled Ukrainian Territory
- ▨ Reported Ukrainian Partisan Warfare
- Russian-controlled Ukrainian Territory before February 24
- Claimed Russian Control over Ukrainian Territory
- Major Railroads
- - - Assessed Russian Advances in Ukraine*
- Claimed Ukrainian Counteroffensives

* Assessed Russian advances are areas where ISW assesses Russian forces have operated in or launched attacks against but do not control.

Assessed Control of Terrain Around Donetsk as of November 30, 2022, 3:00 PM ET

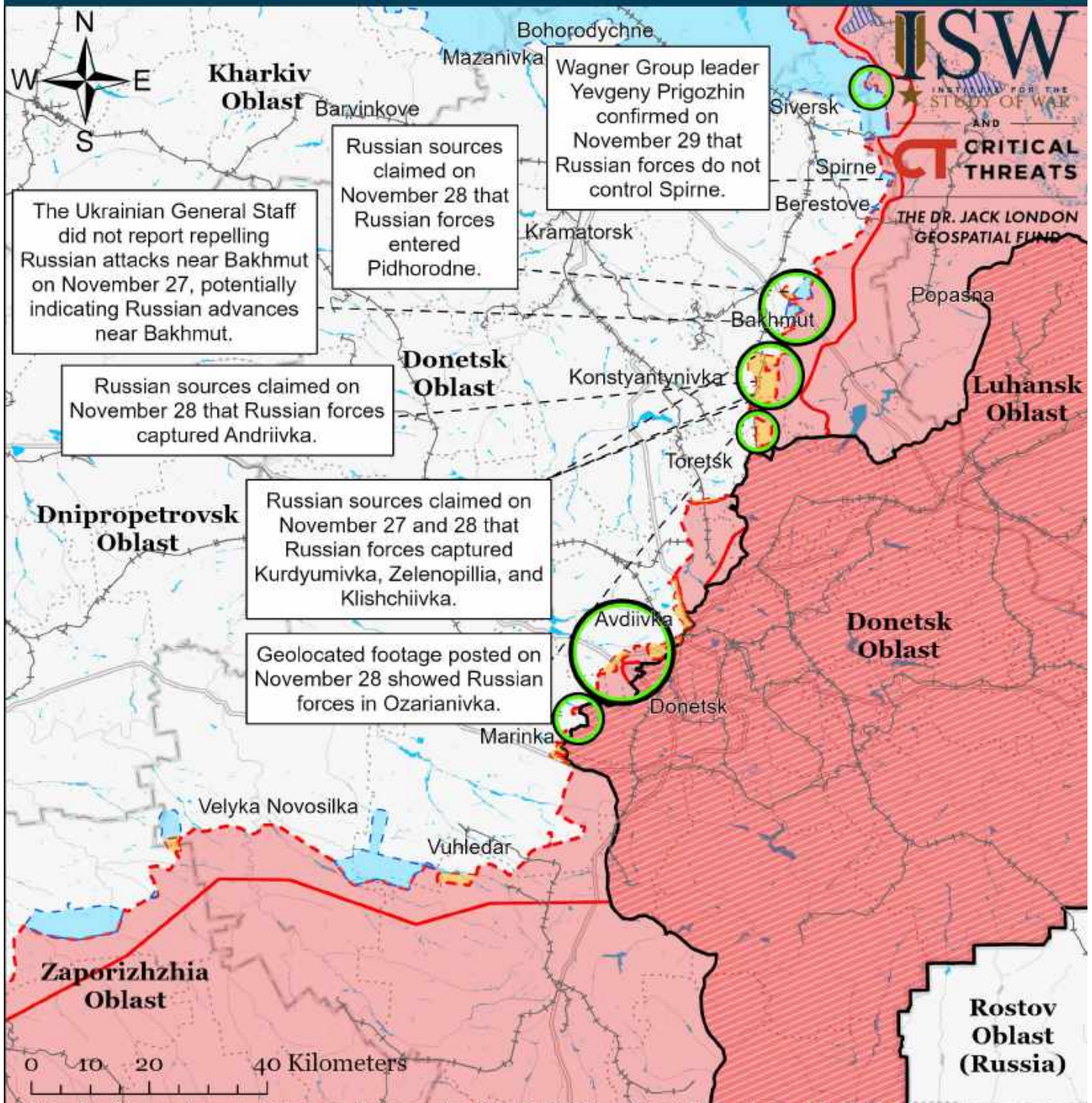


Map by George Barros, Kateryna Stepanenko, Noel Mikkelsen, Daniel Mealie, and Will Kiehn
© 2022 Institute for the Study of War and AEI's Critical Threats Project

- Significant Fighting in the past 24 Hours
- Assessed Russian-controlled Ukrainian Territory
- Reported Ukrainian Partisan Warfare
- Russian-controlled Ukrainian Territory before February 24
- Claimed Russian Control over Ukrainian Territory
- Major Railroads
- - - Assessed Russian Advances in Ukraine*
- Claimed Ukrainian Counteroffensives

* Assessed Russian advances are areas where ISW assesses Russian forces have operated in or launched attacks against but do not control.

Assessed Control of Terrain Around Donetsk as of November 29, 2022, 3:00 PM ET

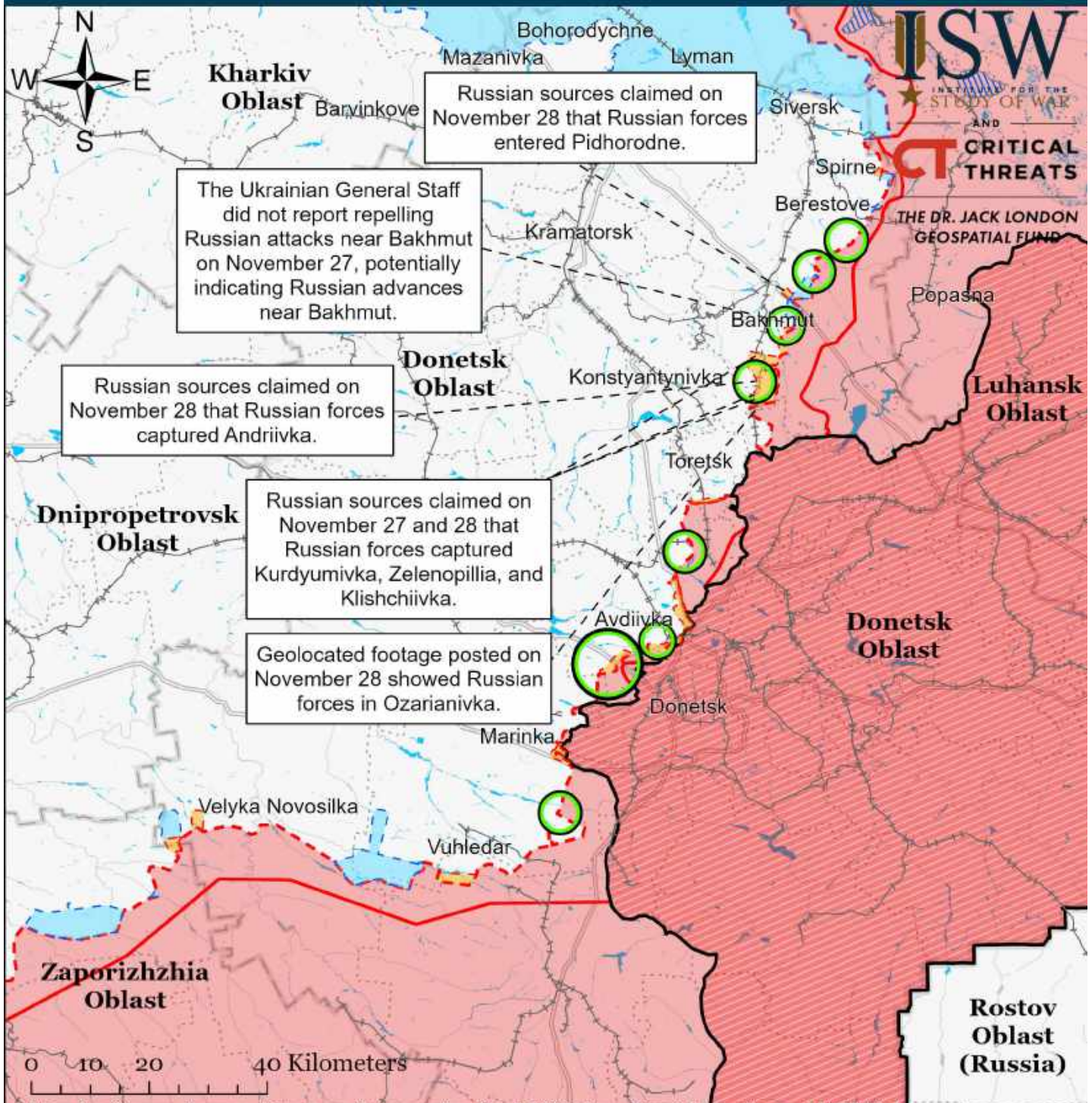


Map by George Barros, Kateryna Stepanenko, Noel Mikkelsen, Daniel Mealie, and Will Kiehn
© 2022 Institute for the Study of War and AEI's Critical Threats Project

- Significant Fighting in the past 24 Hours
- Assessed Russian-controlled Ukrainian Territory
- ▨ Reported Ukrainian Partisan Warfare
- Russian-controlled Ukrainian Territory before February 24
- Claimed Russian Control over Ukrainian Territory
- Major Railroads
- - - Assessed Russian Advances in Ukraine*
- Claimed Ukrainian Counteroffensives

* Assessed Russian advances are areas where ISW assesses Russian forces have operated in or launched attacks against but do not control.

Assessed Control of Terrain Around Donetsk as of November 28, 2022, 3:00 PM ET

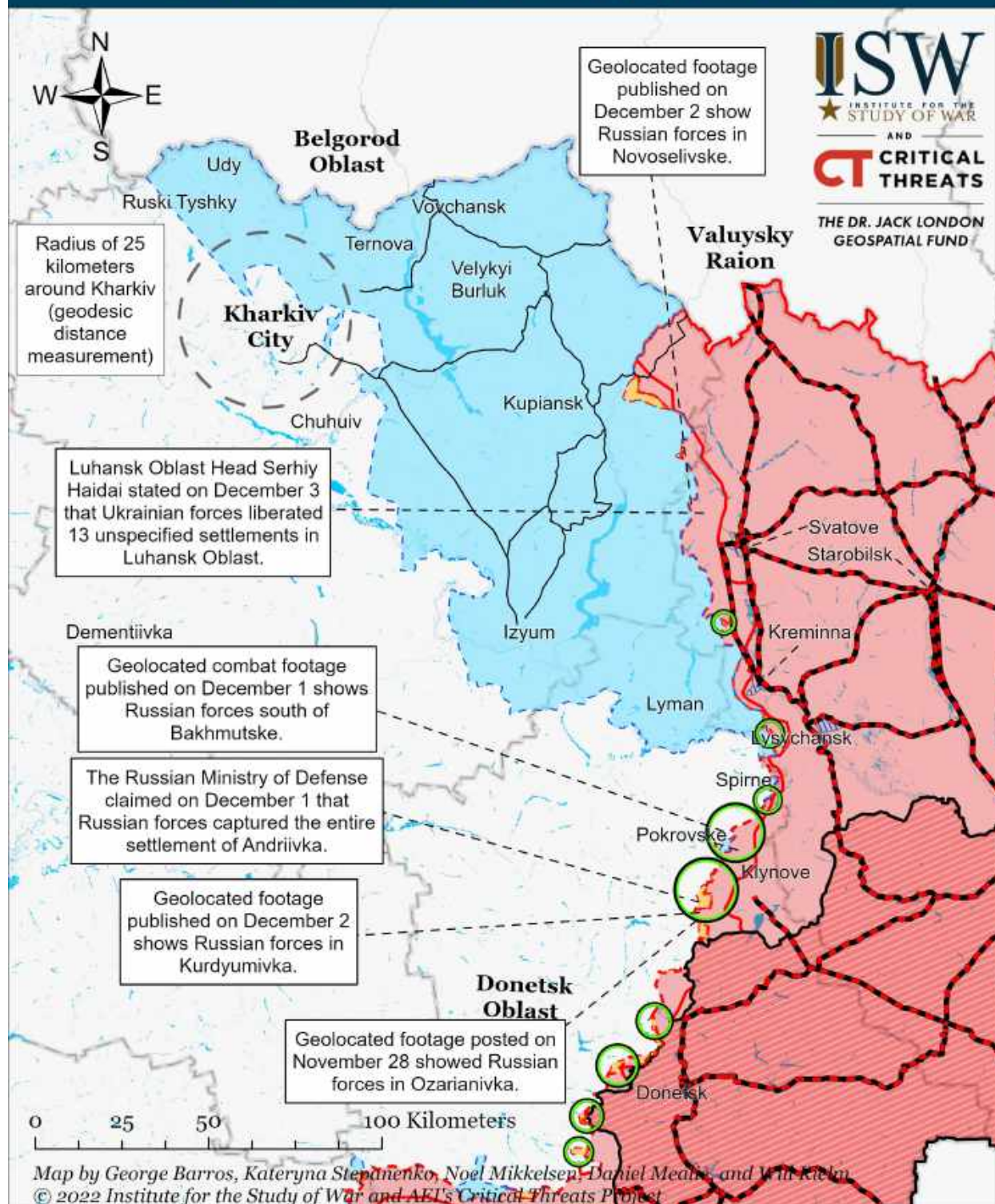


Map by George Barros, Kateryna Stepanenko, Noel Mikkelsen, Daniel Mealie, and Will Kiehn
© 2022 Institute for the Study of War and AEI's Critical Threats Project

- Significant Fighting in the past 24 Hours
- Assessed Russian-controlled Ukrainian Territory
- Reported Ukrainian Partisan Warfare
- Russian-controlled Ukrainian Territory before February 24
- Claimed Russian Control over Ukrainian Territory
- Major Railroads
- Assessed Russian Advances in Ukraine*
- Claimed Ukrainian Counteroffensives

* Assessed Russian advances are areas where ISW assesses Russian forces have operated in or launched attacks against but do not control.

Assessed Control of Terrain Around Kharkiv as of December 4, 2022, 3:00 PM ET



○ Significant Fighting in the past 24 Hours

— Key Ukrainian Roads

— Russian Ground Lines of Communication

▬ Russian-controlled Ukrainian Territory before February 24

▬ Assessed Russian Advances in Ukraine*

▬ Assessed Russian-controlled Ukrainian Territory

▬ Claimed Russian Control over Ukrainian Territory

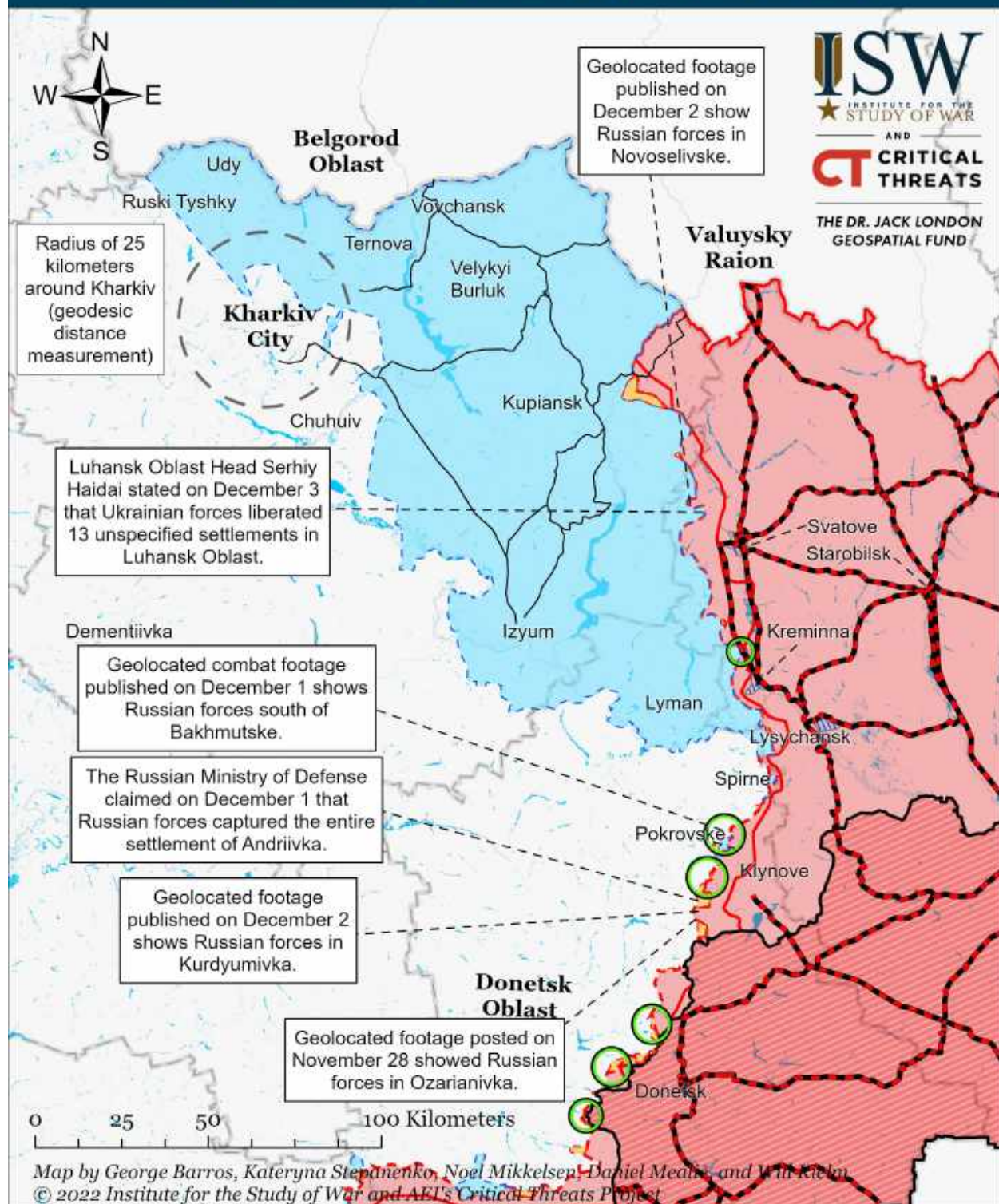
▬ Claimed Ukrainian Counteroffensives

▬ Reported Ukrainian Partisan Warfare

* Assessed Russian advances are areas where ISW assesses Russian forces have operated in or launched attacks against but do not control.

Spokesman for the Ukrainian Eastern Forces, Colonel Serhiy Cherevaty stated on November 20 that Ukrainian forces have already liberated 12 settlements in Luhansk Oblast since the start of the eastern counteroffensive. ISW will update our maps when independent sources disclose the area of Ukrainian advances.

Assessed Control of Terrain Around Kharkiv as of December 3, 2022, 3:00 PM ET

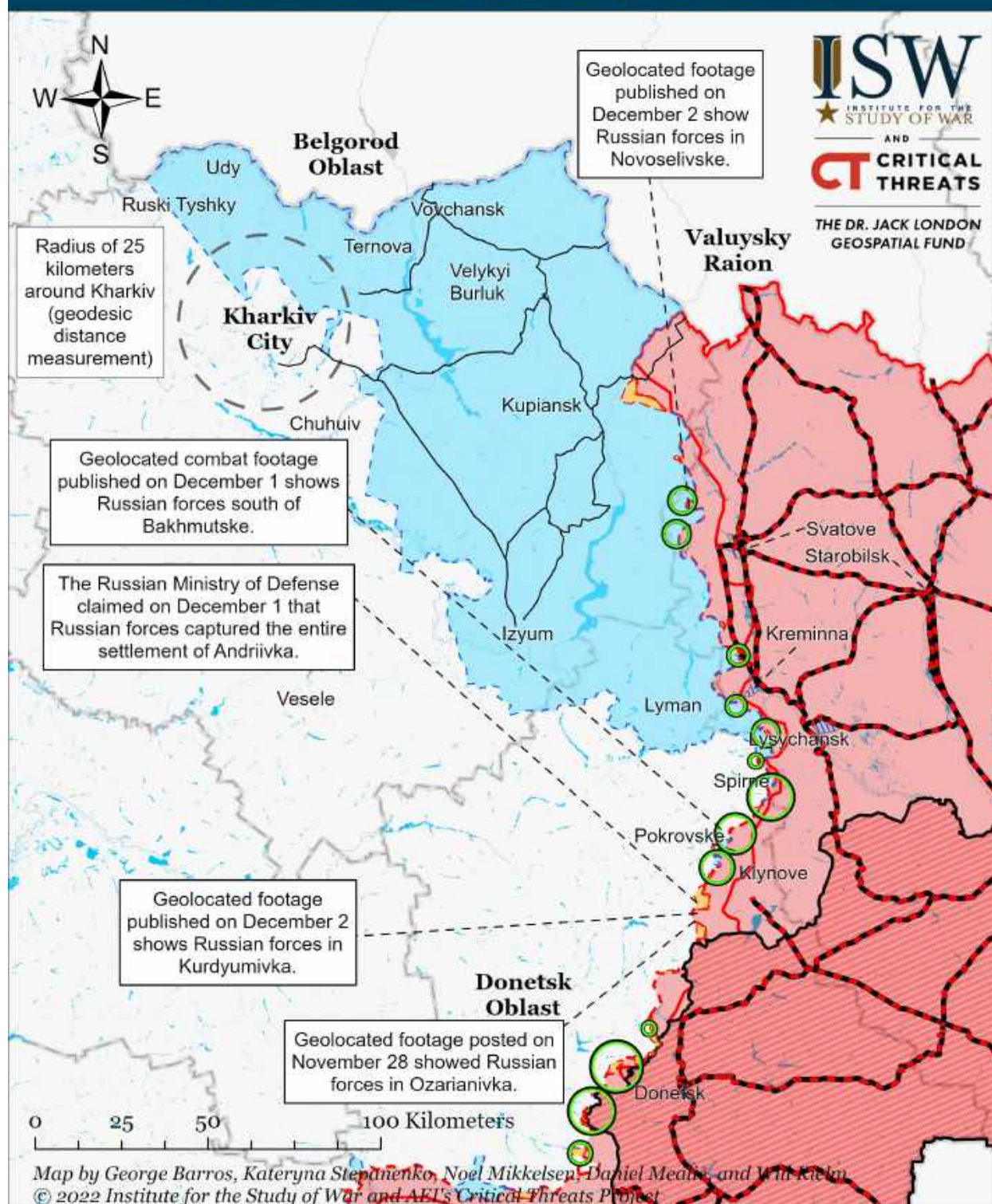


- | | | |
|--------------------------------------------------------------------------------------------|--------------------------------------------------------------------------------------------------------------------------------------|-------------------------------------------------------------------------------------------------------------------------------------------------------------------------------------|
| ○ Significant Fighting in the past 24 Hours | Russian-controlled Ukrainian Territory before February 24 | Claimed Russian Control over Ukrainian Territory |
| — Key Ukrainian Roads | Assessed Russian Advances in Ukraine* | Claimed Ukrainian Counteroffensives |
| Russian Ground Lines of Communication | Assessed Russian-controlled Ukrainian Territory | Reported Ukrainian Partisan Warfare |

* Assessed Russian advances are areas where ISW assesses Russian forces have operated in or launched attacks against but do not control.

Spokesman for the Ukrainian Eastern Forces, Colonel Serhiy Cherevaty stated on November 20 that Ukrainian forces have already liberated 12 settlements in Luhansk Oblast since the start of the eastern counteroffensive. ISW will update our maps when independent sources disclose the area of Ukrainian advances.

Assessed Control of Terrain Around Kharkiv as of December 2, 2022, 3:00 PM ET

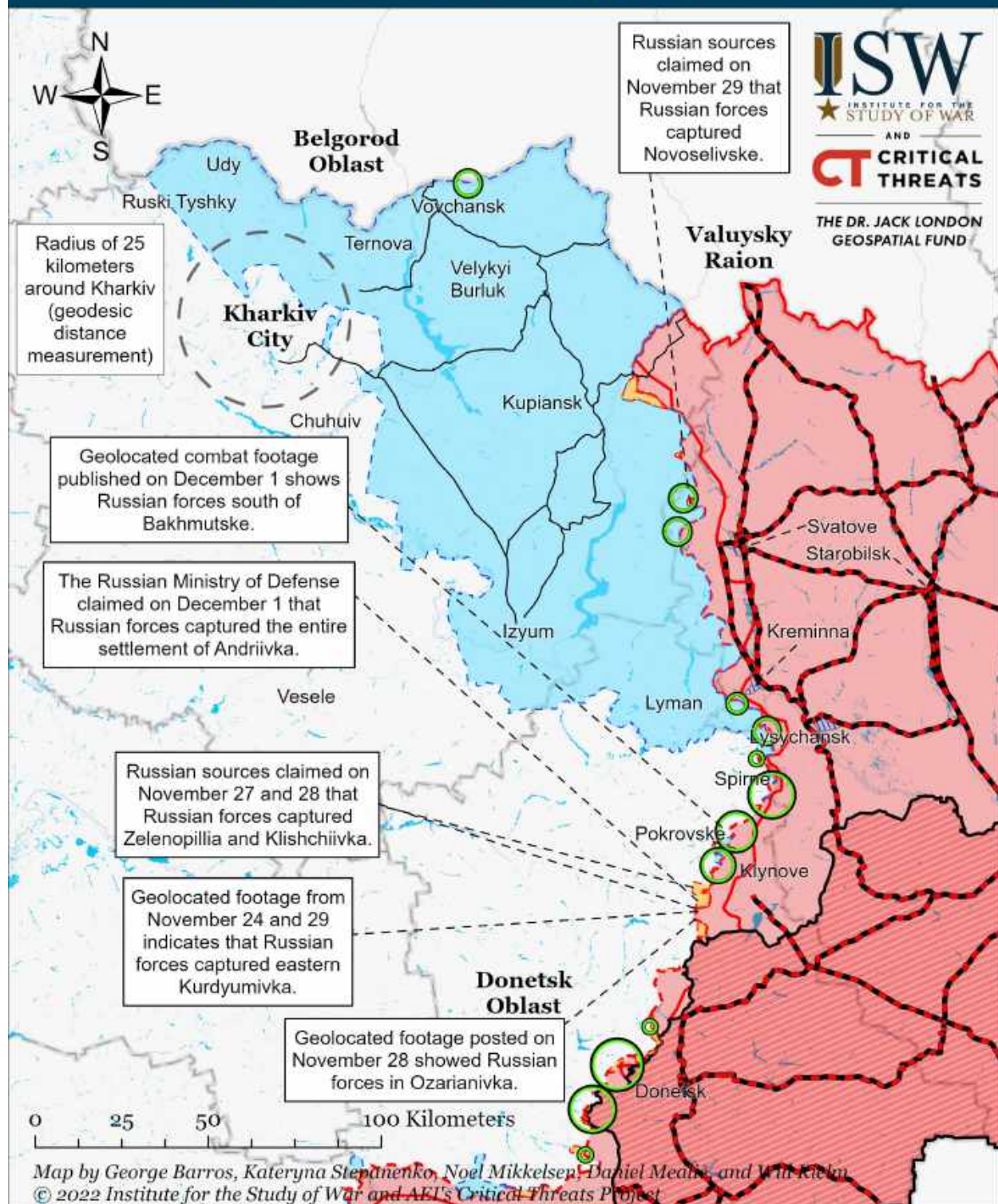


- | | | |
|--------------------------------------------------------------------------------------------|----------------------------------------------------------------------------------------------------------------------------------|----------------------------------------------------------------------------------------------------------------------------|
| ○ Significant Fighting in the past 24 Hours | Russian-controlled Ukrainian Territory before February 24 | Claimed Russian Control over Ukrainian Territory |
| — Key Ukrainian Roads | Assessed Russian Advances in Ukraine* | Claimed Ukrainian Counteroffensives |
| Russian Ground Lines of Communication | Assessed Russian-controlled Ukrainian Territory | Reported Ukrainian Partisan Warfare |

* Assessed Russian advances are areas where ISW assesses Russian forces have operated in or launched attacks against but do not control.

Spokesman for the Ukrainian Eastern Forces, Colonel Serhiy Cherevaty stated on November 20 that Ukrainian forces have already liberated 12 settlements in Luhansk Oblast since the start of the eastern counteroffensive. ISW will update our maps when independent sources disclose the area of Ukrainian advances.

Assessed Control of Terrain Around Kharkiv as of December 1, 2022, 3:00 PM ET



○ Significant Fighting in the past 24 Hours

— Key Ukrainian Roads

— Russian Ground Lines of Communication

■ Russian-controlled Ukrainian Territory before February 24

--- Assessed Russian Advances in Ukraine*

■ Assessed Russian-controlled Ukrainian Territory

■ Claimed Russian Control over Ukrainian Territory

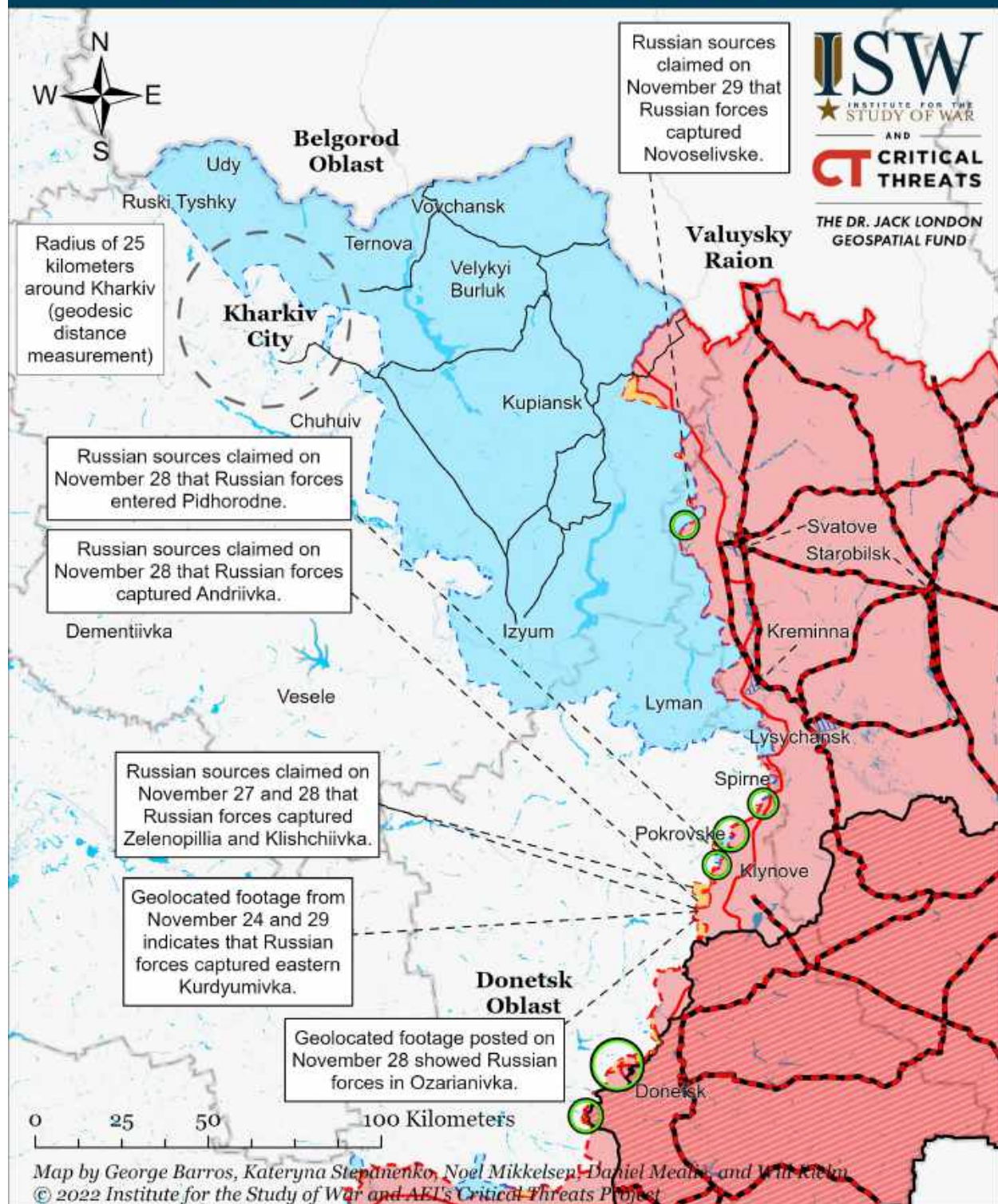
■ Claimed Ukrainian Counteroffensives

■ Reported Ukrainian Partisan Warfare

* Assessed Russian advances are areas where ISW assesses Russian forces have operated in or launched attacks against but do not control.

Spokesman for the Ukrainian Eastern Forces, Colonel Serhiy Cherevaty stated on November 20 that Ukrainian forces have already liberated 12 settlements in Luhansk Oblast since the start of the eastern counteroffensive. ISW will update our maps when independent sources disclose the area of Ukrainian advances.

Assessed Control of Terrain Around Kharkiv as of November 30, 2022, 3:00 PM ET



○ Significant Fighting in the past 24 Hours

— Key Ukrainian Roads

— Russian Ground Lines of Communication

▬ Russian-controlled Ukrainian Territory before February 24

▬ Assessed Russian Advances in Ukraine*

▬ Assessed Russian-controlled Ukrainian Territory

▬ Claimed Russian Control over Ukrainian Territory

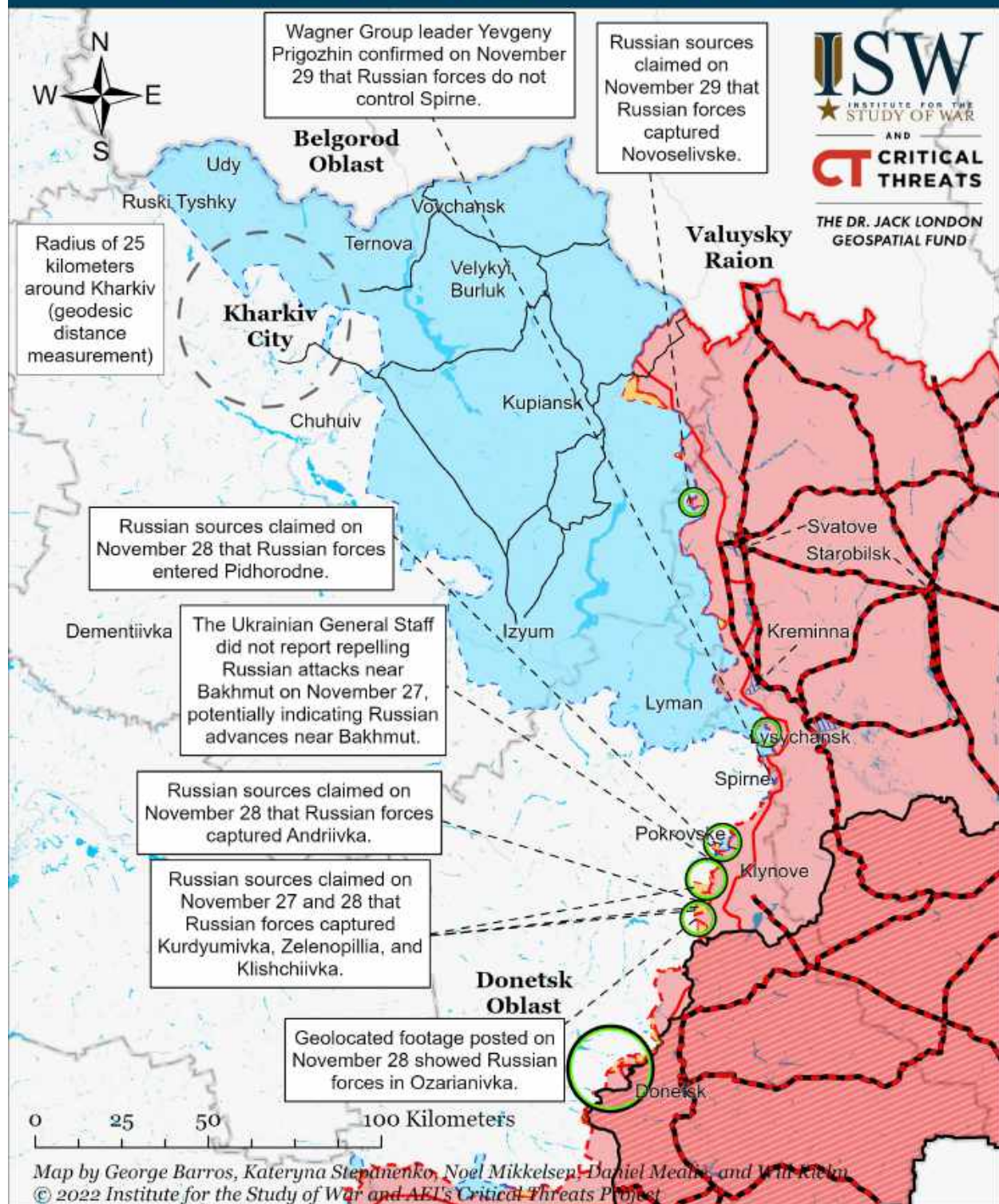
▬ Claimed Ukrainian Counteroffensives

▬ Reported Ukrainian Partisan Warfare

* Assessed Russian advances are areas where ISW assesses Russian forces have operated in or launched attacks against but do not control.

Spokesman for the Ukrainian Eastern Forces, Colonel Serhiy Cherevaty stated on November 20 that Ukrainian forces have already liberated 12 settlements in Luhansk Oblast since the start of the eastern counteroffensive. ISW will update our maps when independent sources disclose the area of Ukrainian advances.

Assessed Control of Terrain Around Kharkiv as of November 29, 2022, 3:00 PM ET



○ Significant Fighting in the past 24 Hours

— Key Ukrainian Roads

— Russian Ground Lines of Communication

■ Russian-controlled Ukrainian Territory before February 24

■ Assessed Russian Advances in Ukraine*

■ Assessed Russian-controlled Ukrainian Territory

■ Claimed Russian Control over Ukrainian Territory

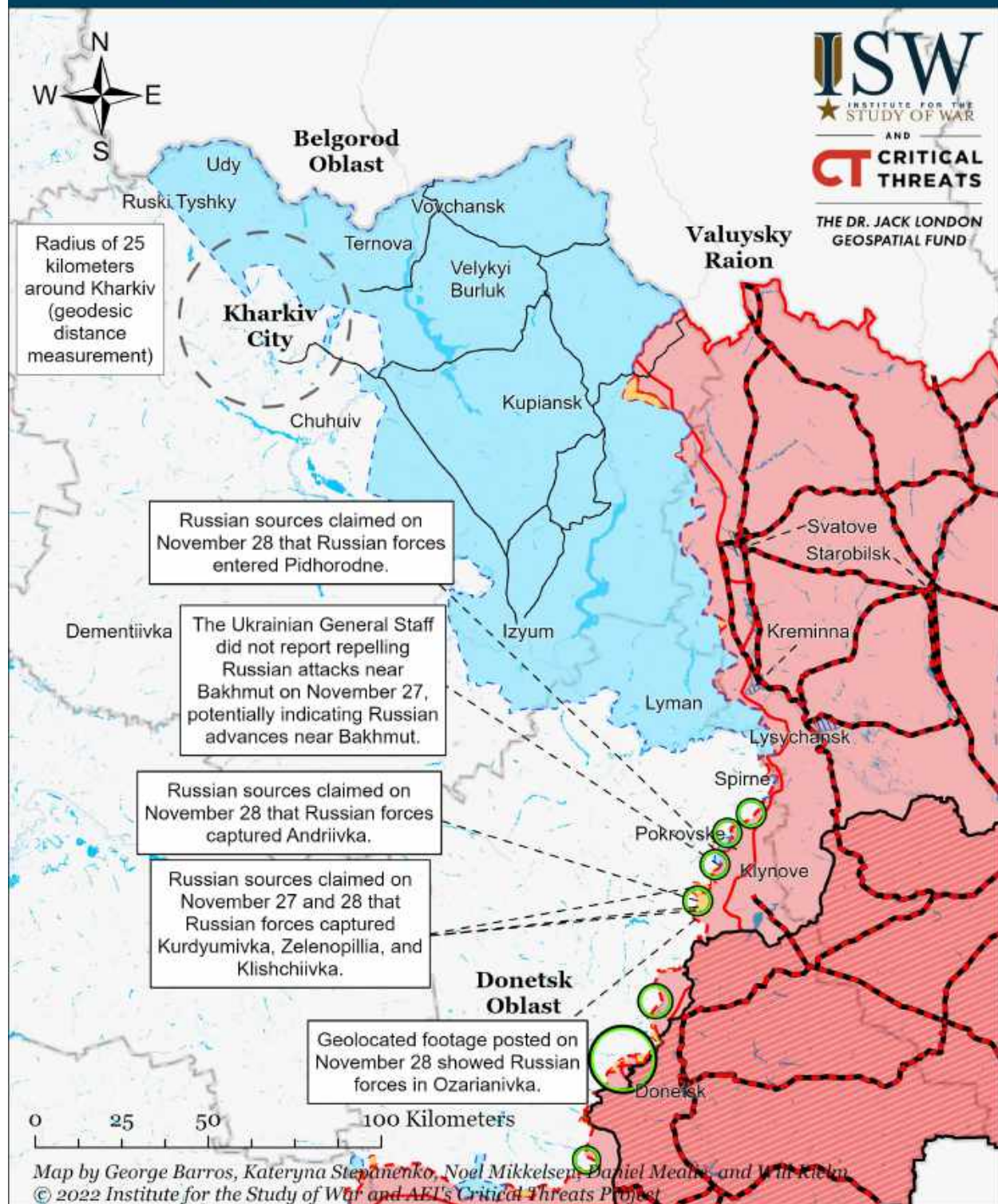
■ Claimed Ukrainian Counteroffensives

■ Reported Ukrainian Partisan Warfare

* Assessed Russian advances are areas where ISW assesses Russian forces have operated in or launched attacks against but do not control.

Spokesman for the Ukrainian Eastern Forces, Colonel Serhiy Cherevaty stated on November 20 that Ukrainian forces have already liberated 12 settlements in Luhansk Oblast since the start of the eastern counteroffensive. ISW will update our maps when independent sources disclose the area of Ukrainian advances.

Assessed Control of Terrain Around Kharkiv as of November 28, 2022, 3:00 PM ET



○ Significant Fighting in the past 24 Hours

— Key Ukrainian Roads

— Russian Ground Lines of Communication

■ Russian-controlled Ukrainian Territory before February 24

— Assessed Russian Advances in Ukraine*

■ Assessed Russian-controlled Ukrainian Territory

■ Claimed Russian Control over Ukrainian Territory

■ Claimed Ukrainian Counteroffensives

■ Reported Ukrainian Partisan Warfare

* Assessed Russian advances are areas where ISW assesses Russian forces have operated in or launched attacks against but do not control.

Spokesman for the Ukrainian Eastern Forces, Colonel Serhiy Cherevaty stated on November 20 that Ukrainian forces have already liberated 12 settlements in Luhansk Oblast since the start of the eastern counteroffensive. ISW will update our maps when independent sources disclose the area of Ukrainian advances.