

Assessed Control of Terrain in Ukraine and Main Russian Maneuver Axes as of December 18, 2022, 3:00 PM ET



Map by George Barros, Kateryna Stepanenko, Noel Mikkelsen, Daniel Mealie, and Will Kielm
© 2022 Institute for the Study of War and AEI's Critical Threats Project

* Assessed Russian advances are areas where ISW assesses Russian forces have operated in or launched attacks against but do not control.

Assessed Control of Terrain in Ukraine and Main Russian Maneuver Axes as of December 17, 2022, 3:00 PM ET



Map by George Barros, Kateryna Stepanenko, Noel Mikkelsen, Daniel Mealie, and Will Kiellm
© 2022 Institute for the Study of War and AEI's Critical Threats Project

* Assessed Russian advances are areas where ISW assesses Russian forces have operated in or launched attacks against but do not control.

Assessed Control of Terrain in Ukraine and Main Russian Maneuver Axes as of December 16, 2022, 3:00 PM ET



Map by George Barros, Kateryna Stepanenko, Noel Mikkelsen, Daniel Mealie, and Will Kielm
© 2022 Institute for the Study of War and AEI's Critical Threats Project

* Assessed Russian advances are areas where ISW assesses Russian forces have operated in or launched attacks against but do not control.

Assessed Control of Terrain in Ukraine and Main Russian Maneuver Axes as of December 15, 2022, 3:00 PM ET



Map by George Barros, Kateryna Stepanenko, Noel Mikkelsen, Daniel Mealie, and Will Kielm
© 2022 Institute for the Study of War and AEI's Critical Threats Project

* Assessed Russian advances are areas where ISW assesses Russian forces have operated in or launched attacks against but do not control.

Assessed Control of Terrain in Ukraine and Main Russian Maneuver Axes as of December 14, 2022, 3:00 PM ET



Map by George Barros, Kateryna Stepanenko, Noel Mikkelsen, Daniel Mealie, and Will Kiellm
© 2022 Institute for the Study of War and AEI's Critical Threats Project

* Assessed Russian advances are areas where ISW assesses Russian forces have operated in or launched attacks against but do not control.

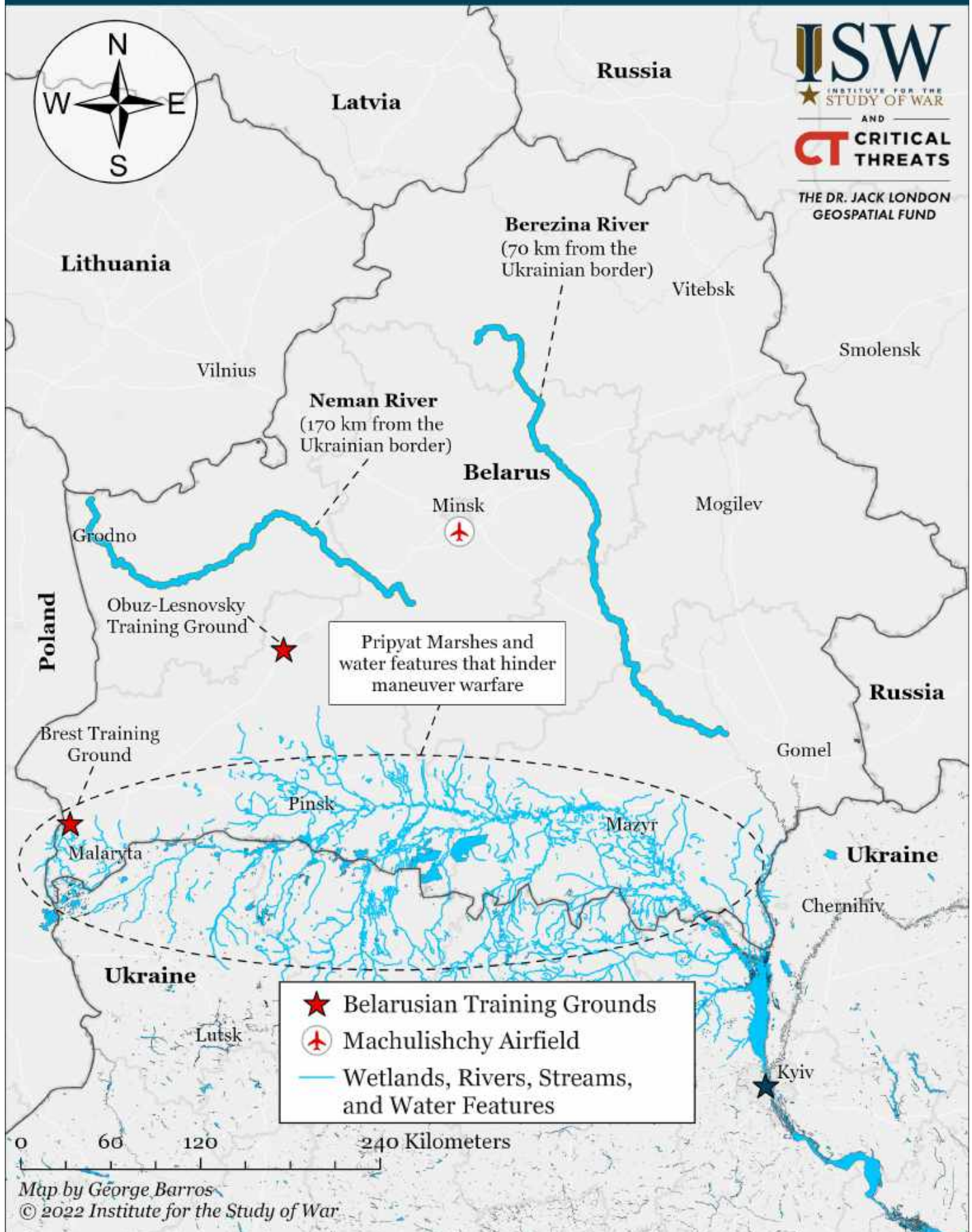
Assessed Control of Terrain in Ukraine and Main Russian Maneuver Axes as of December 13, 2022, 3:00 PM ET



Map by George Barros, Kateryna Stepanenko, Noel Mikkelsen, Daniel Mealie, and Will Kielm
© 2022 Institute for the Study of War and AEI's Critical Threats Project

* Assessed Russian advances are areas where ISW assesses Russian forces have operated in or launched attacks against but do not control.

Belarusian Snap Readiness Check Reference Map for ISW December 13, 2022, Operations Assessment



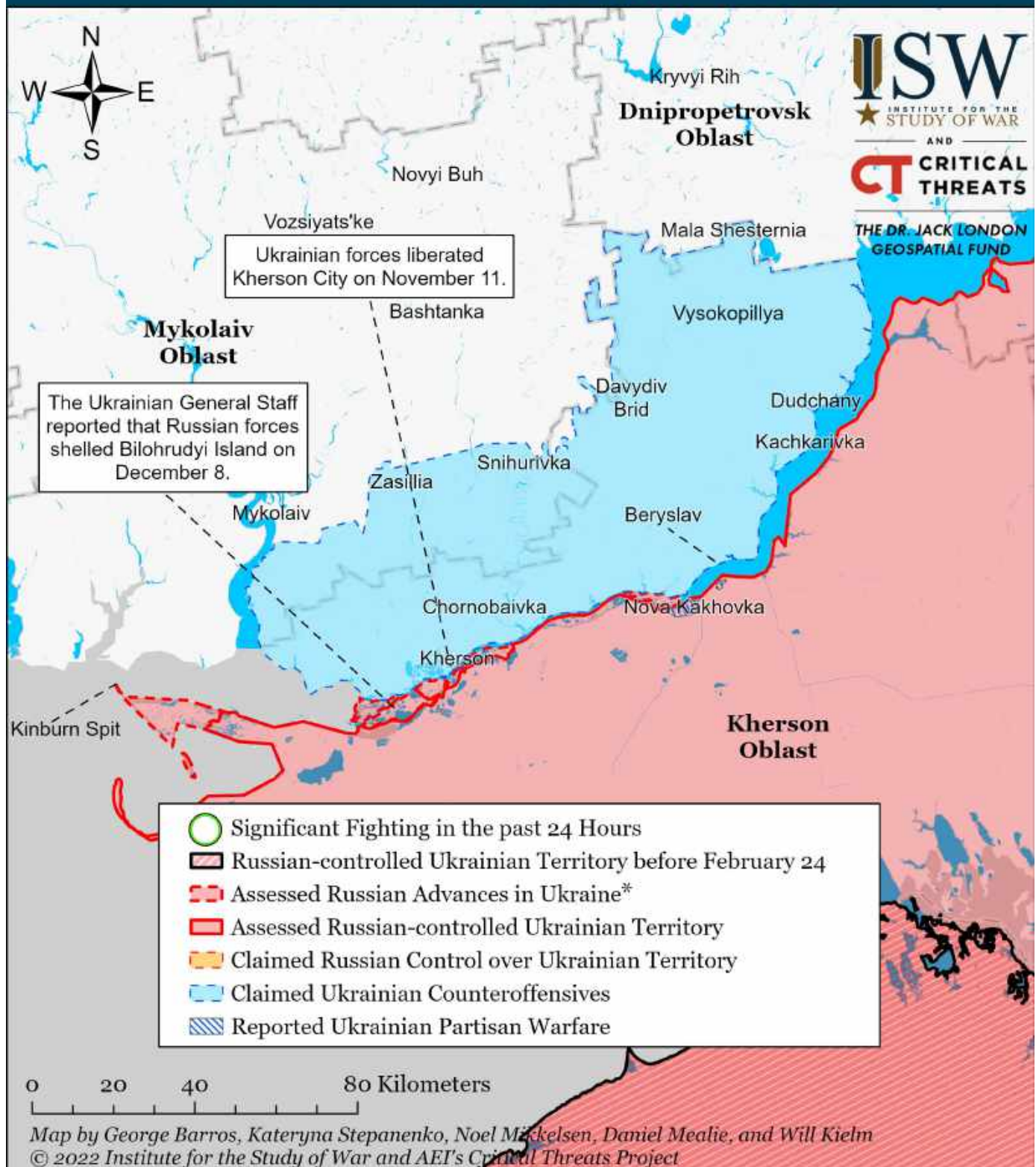
Assessed Control of Terrain in Ukraine and Main Russian Maneuver Axes as of December 12, 2022, 3:00 PM ET



Map by George Barros, Kateryna Stepanenko, Noel Mikkelsen, Daniel Mealie, and Will Kielm
© 2022 Institute for the Study of War and AEI's Critical Threats Project

* Assessed Russian advances are areas where ISW assesses Russian forces have operated in or launched attacks against but do not control.

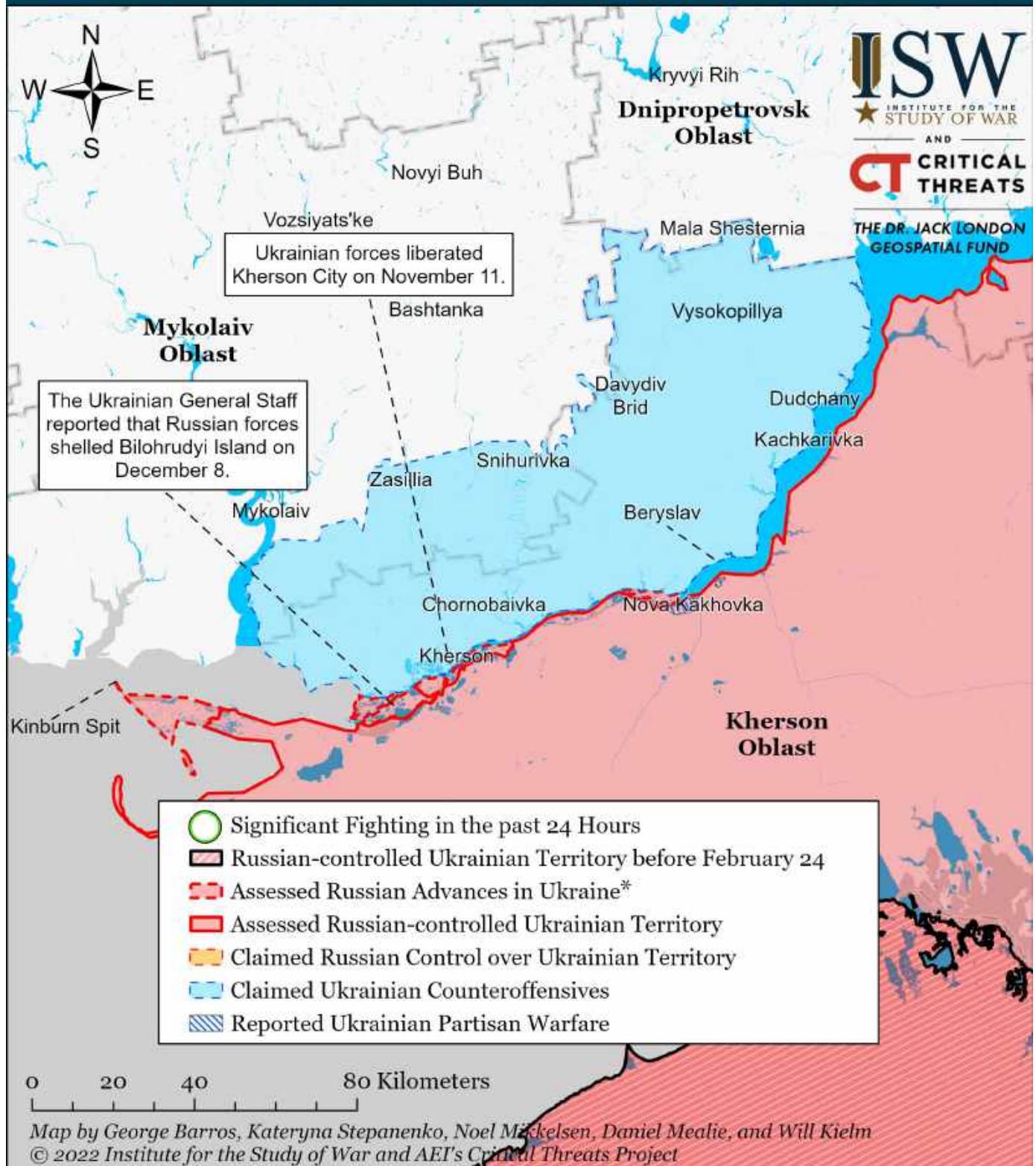
Assessed Control of Terrain Around Kherson and Mykolaiv as of December 18, 2022, 3:00 PM ET



* Assessed Russian advances are areas where ISW assesses Russian forces have operated in or launched attacks against but do not control.

Light reconnaissance elements of the Ukrainian Carlson special volunteer unit placed a Ukrainian flag on a tower in the wetlands on the left bank of the Dniester River, approximately 600 meters south of Kherson City and claimed the area will become a Ukrainian bridgehead that will support future operations to further liberate southern Kherson on December 3. ISW does not assess that Ukrainian forces have established a bridgehead or lodgment in this location as Carlson claimed as of December 3. The Carlson element's ability to operate in the area uncontested and the lack of observed Russian fortifications or defensive forces in the area indicate that Russian forces do not exercise full control over the area. Russian control lines are likely south of the Konk River.

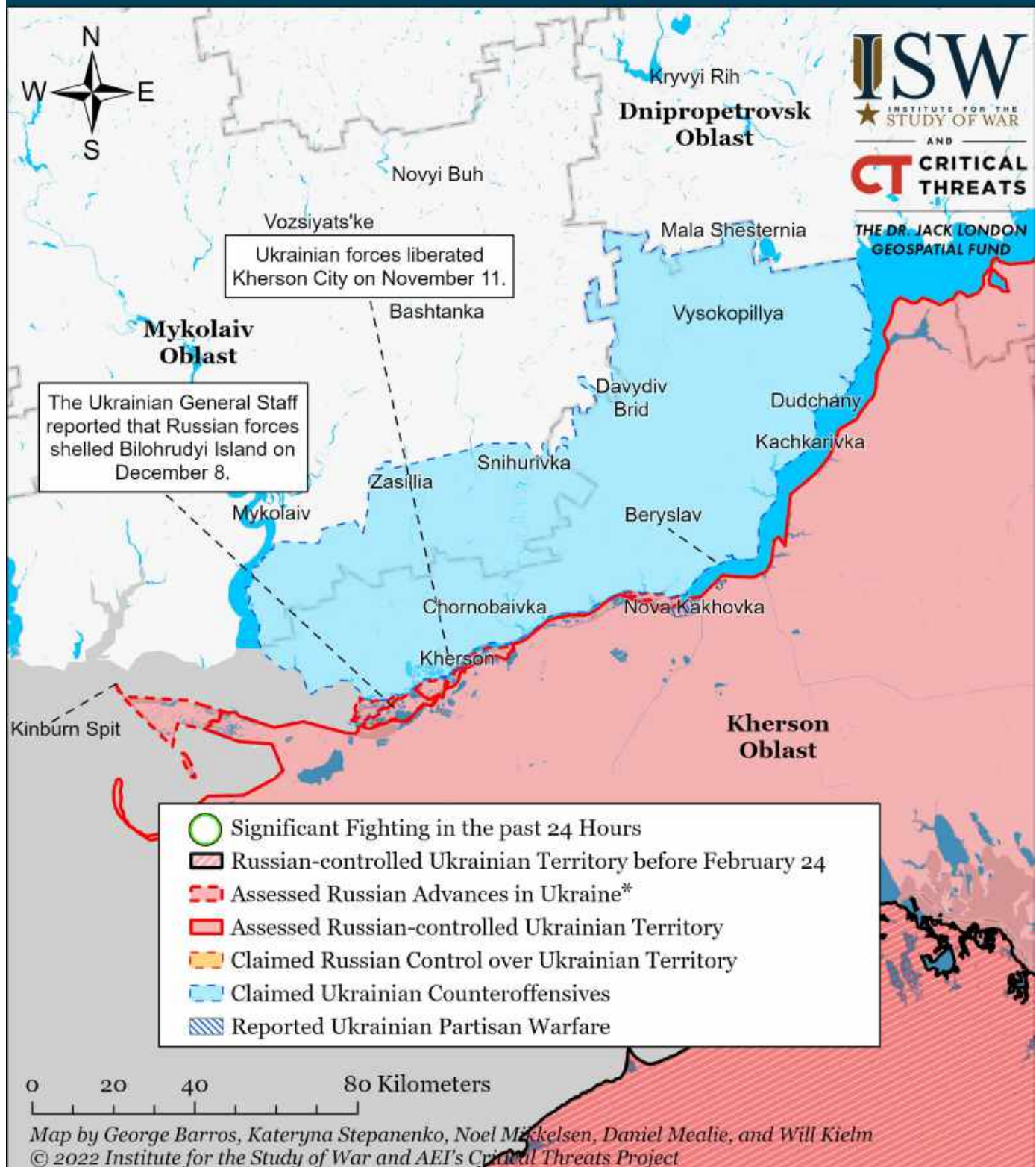
Assessed Control of Terrain Around Kherson and Mykolaiv as of December 17, 2022, 3:00 PM ET



* Assessed Russian advances are areas where ISW assesses Russian forces have operated in or launched attacks against but do not control.

Light reconnaissance elements of the Ukrainian Carlson special volunteer unit placed a Ukrainian flag on a tower in the wetlands on the left bank of the Dniro River, approximately 600 meters south of Kherson City and claimed the area will become a Ukrainian bridgehead that will support future operations to further liberate southern Kherson on December 3. ISW does not assess that Ukrainian forces have established a bridgehead or lodgment in this location as Carlson claimed as of December 3. The Carlson element's ability to operate in the area uncontested and the lack of observed Russian fortifications or defensive forces in the area indicate that Russian forces do not exercise full control over the area. Russian control lines are likely south of the Konka River.

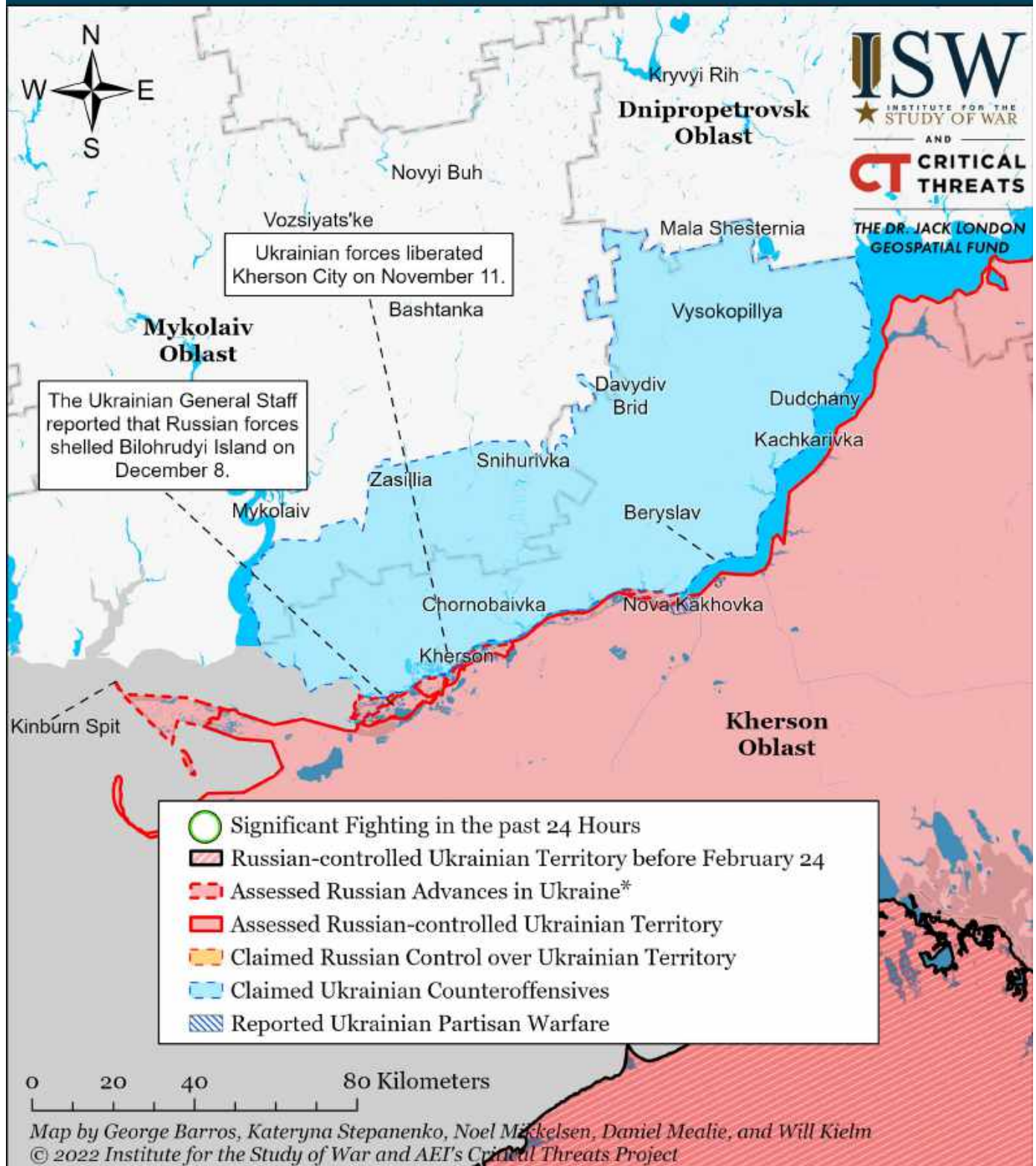
Assessed Control of Terrain Around Kherson and Mykolaiv as of December 16, 2022, 3:00 PM ET



* Assessed Russian advances are areas where ISW assesses Russian forces have operated in or launched attacks against but do not control.

Light reconnaissance elements of the Ukrainian Carlson special volunteer unit placed a Ukrainian flag on a tower in the wetlands on the left bank of the Dniester River, approximately 600 meters south of Kherson City and claimed the area will become a Ukrainian bridgehead that will support future operations to further liberate southern Kherson on December 3. ISW does not assess that Ukrainian forces have established a bridgehead or lodgment in this location as Carlson claimed as of December 3. The Carlson element's ability to operate in the area uncontested and the lack of observed Russian fortifications or defensive forces in the area indicate that Russian forces do not exercise full control over the area. Russian control lines are likely south of the Konk River.

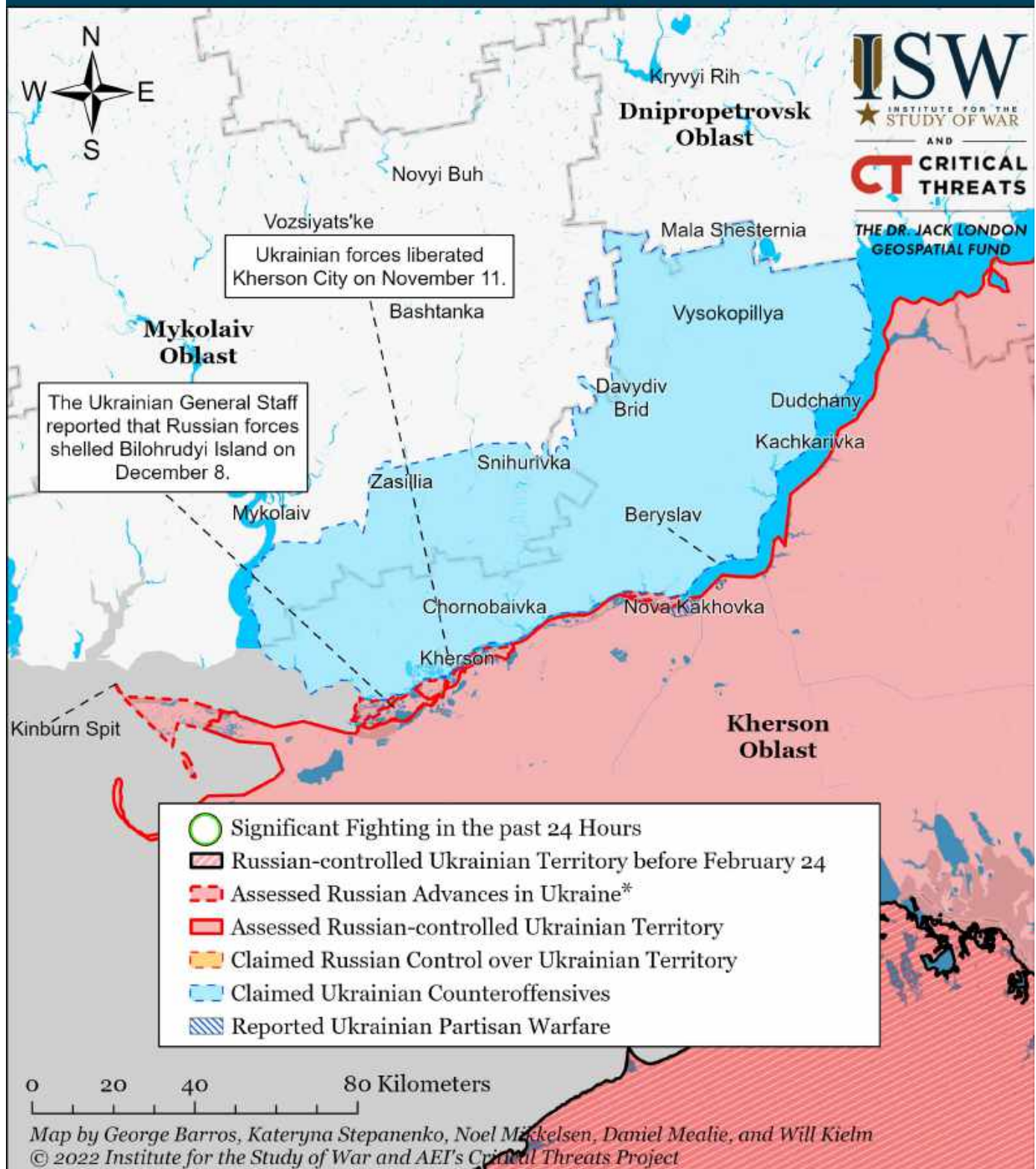
Assessed Control of Terrain Around Kherson and Mykolaiv as of December 15, 2022, 3:00 PM ET



* Assessed Russian advances are areas where ISW assesses Russian forces have operated in or launched attacks against but do not control.

Light reconnaissance elements of the Ukrainian Carlson special volunteer unit placed a Ukrainian flag on a tower in the wetlands on the left bank of the Dniester River, approximately 600 meters south of Kherson City and claimed the area will become a Ukrainian bridgehead that will support future operations to further liberate southern Kherson on December 3. ISW does not assess that Ukrainian forces have established a bridgehead or lodgment in this location as Carlson claimed as of December 3. The Carlson element's ability to operate in the area uncontested and the lack of observed Russian fortifications or defensive forces in the area indicate that Russian forces do not exercise full control over the area. Russian control lines are likely south of the Konk River.

Assessed Control of Terrain Around Kherson and Mykolaiv as of December 14, 2022, 3:00 PM ET



* Assessed Russian advances are areas where ISW assesses Russian forces have operated in or launched attacks against but do not control.

Light reconnaissance elements of the Ukrainian Carlson special volunteer unit placed a Ukrainian flag on a tower in the wetlands on the left bank of the Dniro River, approximately 600 meters south of Kherson City and claimed the area will become a Ukrainian bridgehead that will support future operations to further liberate southern Kherson on December 3. ISW does not assess that Ukrainian forces have established a bridgehead or lodgment in this location as Carlson claimed as of December 3. The Carlson element's ability to operate in the area uncontested and the lack of observed Russian fortifications or defensive forces in the area indicate that Russian forces do not exercise full control over the area. Russian control lines are likely south of the Konka River.

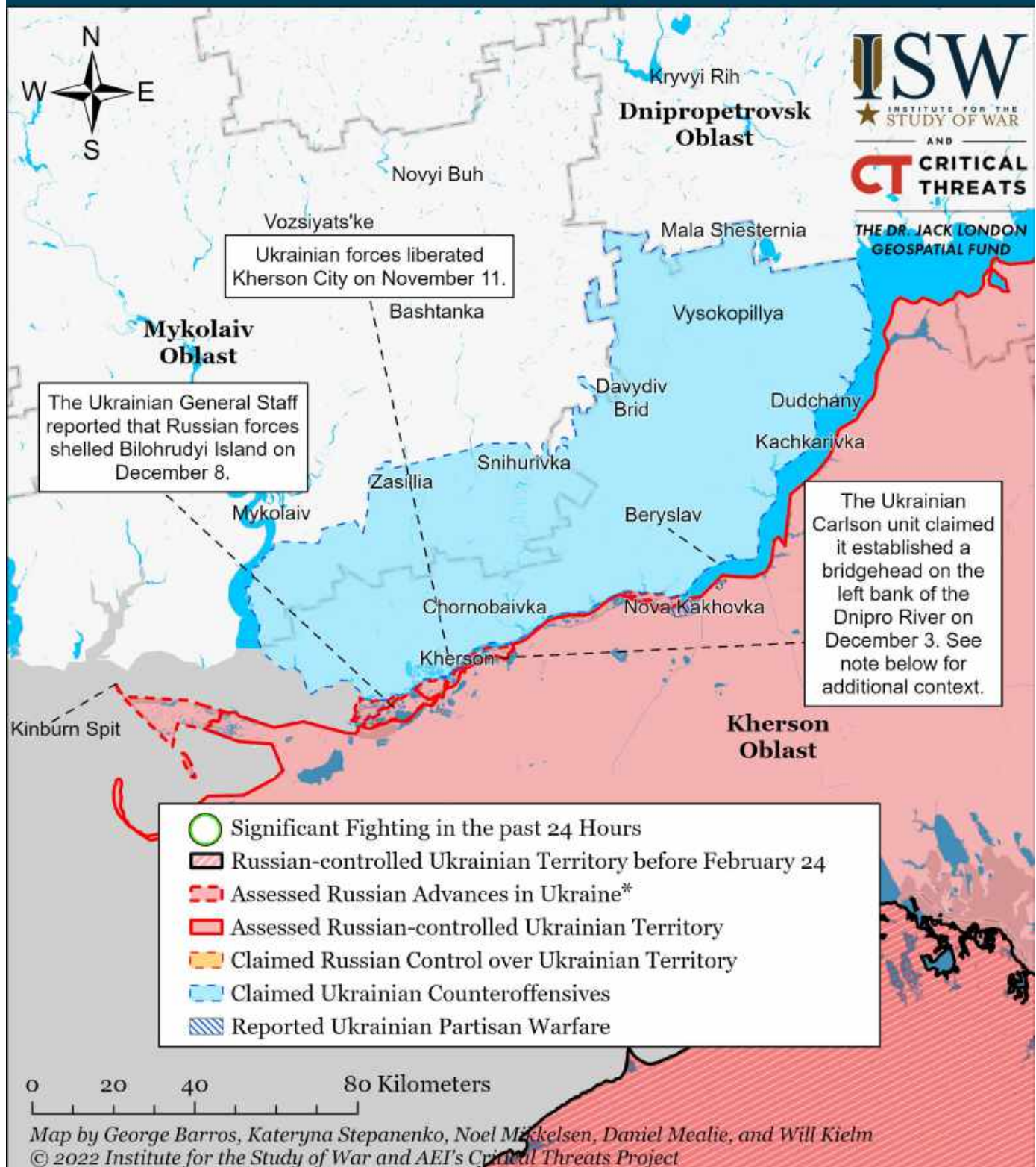
Assessed Control of Terrain Around Kherson and Mykolaiv as of December 13, 2022, 3:00 PM ET



* Assessed Russian advances are areas where ISW assesses Russian forces have operated in or launched attacks against but do not control.

Light reconnaissance elements of the Ukrainian Carlson special volunteer unit placed a Ukrainian flag on a tower in the wetlands on the left bank of the Dniester River, approximately 600 meters south of Kherson City and claimed the area will become a Ukrainian bridgehead that will support future operations to further liberate southern Kherson on December 3. ISW does not assess that Ukrainian forces have established a bridgehead or lodgment in this location as Carlson claimed as of December 3. The Carlson element's ability to operate in the area uncontested and the lack of observed Russian fortifications or defensive forces in the area indicate that Russian forces do not exercise full control over the area. Russian control lines are likely south of the Konk River.

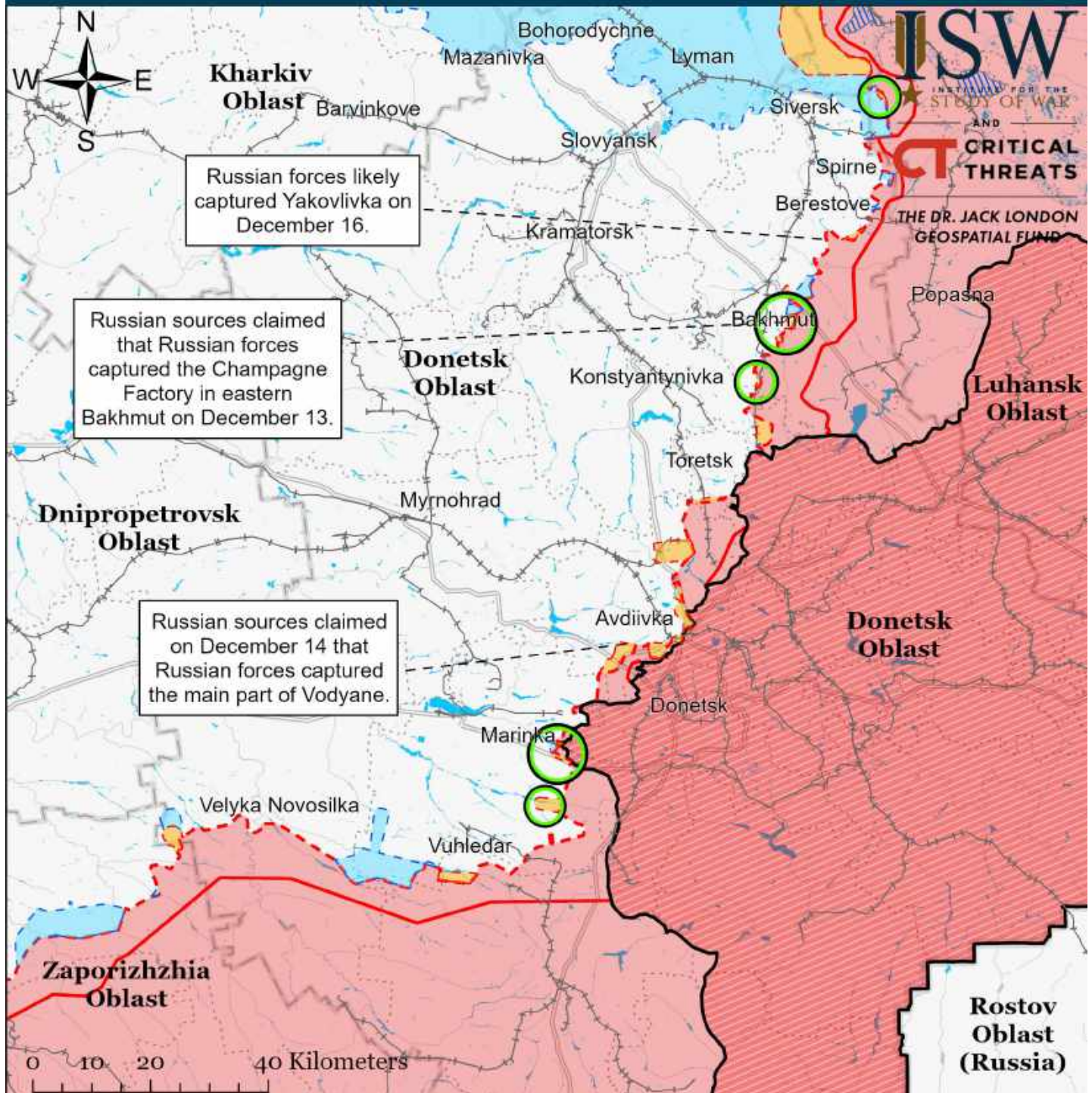
Assessed Control of Terrain Around Kherson and Mykolaiv as of December 12, 2022, 3:00 PM ET



* Assessed Russian advances are areas where ISW assesses Russian forces have operated in or launched attacks against but do not control.

Light reconnaissance elements of the Ukrainian Carlson special volunteer unit placed a Ukrainian flag on a tower in the wetlands on the left bank of the Dniro River, approximately 600 meters south of Kherson City and claimed the area will become a Ukrainian bridgehead that will support future operations to further liberate southern Kherson on December 3. ISW does not assess that Ukrainian forces have established a bridgehead or lodgment in this location as Carlson claimed as of December 3. The Carlson element's ability to operate in the area uncontested and the lack of observed Russian fortifications or defensive forces in the area indicate that Russian forces do not exercise full control over the area. Russian control lines are likely south of the Konka River.

Assessed Control of Terrain Around Donetsk as of December 17, 2022, 3:00 PM ET

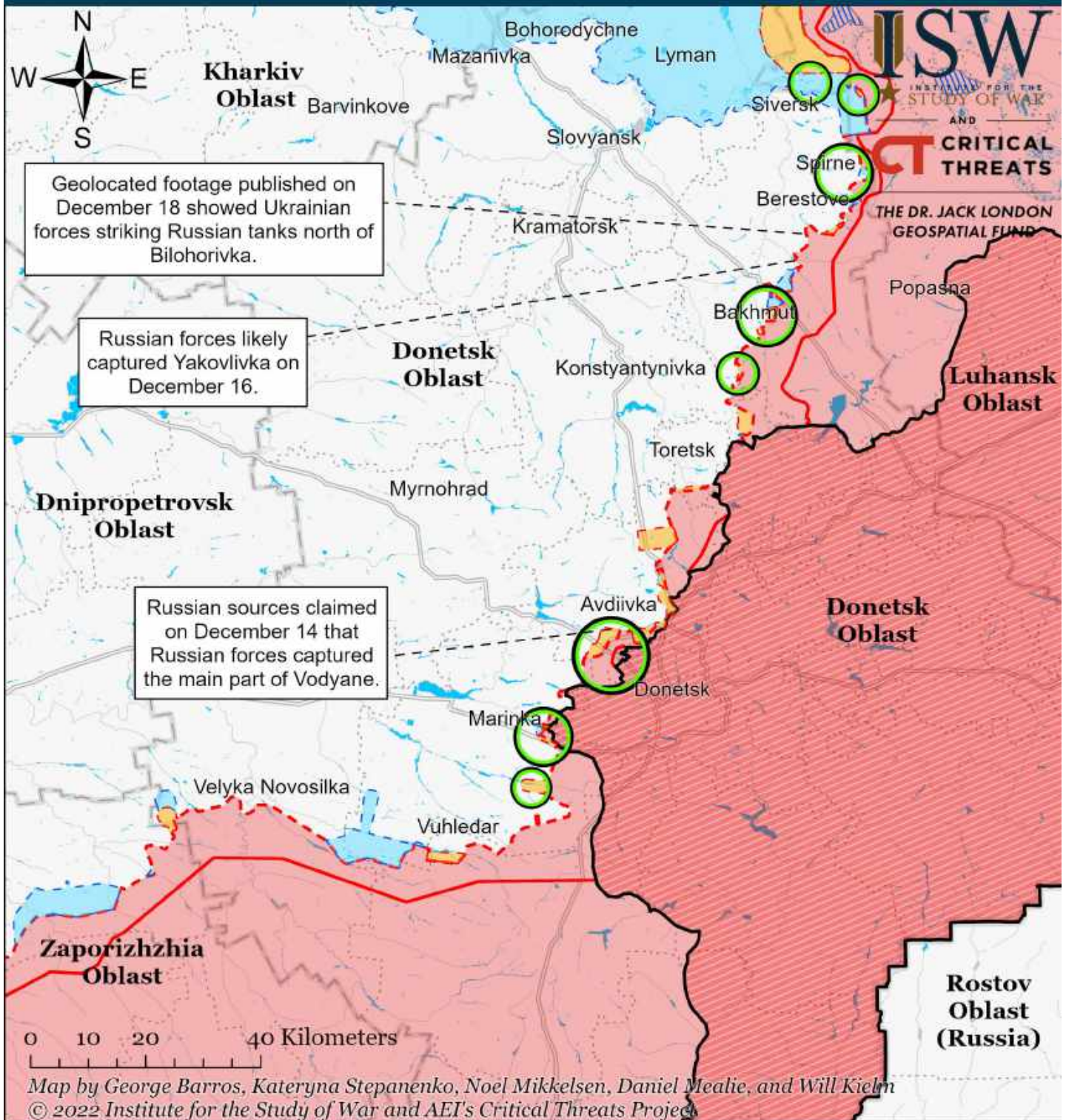


Map by George Barros, Kateryna Stepanenko, Noel Mikkelsen, Daniel Mealie, and Will Kiehn
© 2022 Institute for the Study of War and AEI's Critical Threats Project

- Significant Fighting in the past 24 Hours
- Russian-controlled Ukrainian Territory before February 24
- Assessed Russian Advances in Ukraine*
- Assessed Russian-controlled Ukrainian Territory
- Claimed Russian Control over Ukrainian Territory
- Claimed Ukrainian Counteroffensives
- Major Railroads
- Reported Ukrainian Partisan Warfare

* Assessed Russian advances are areas where ISW assesses Russian forces have operated in or launched attacks against but do not control.

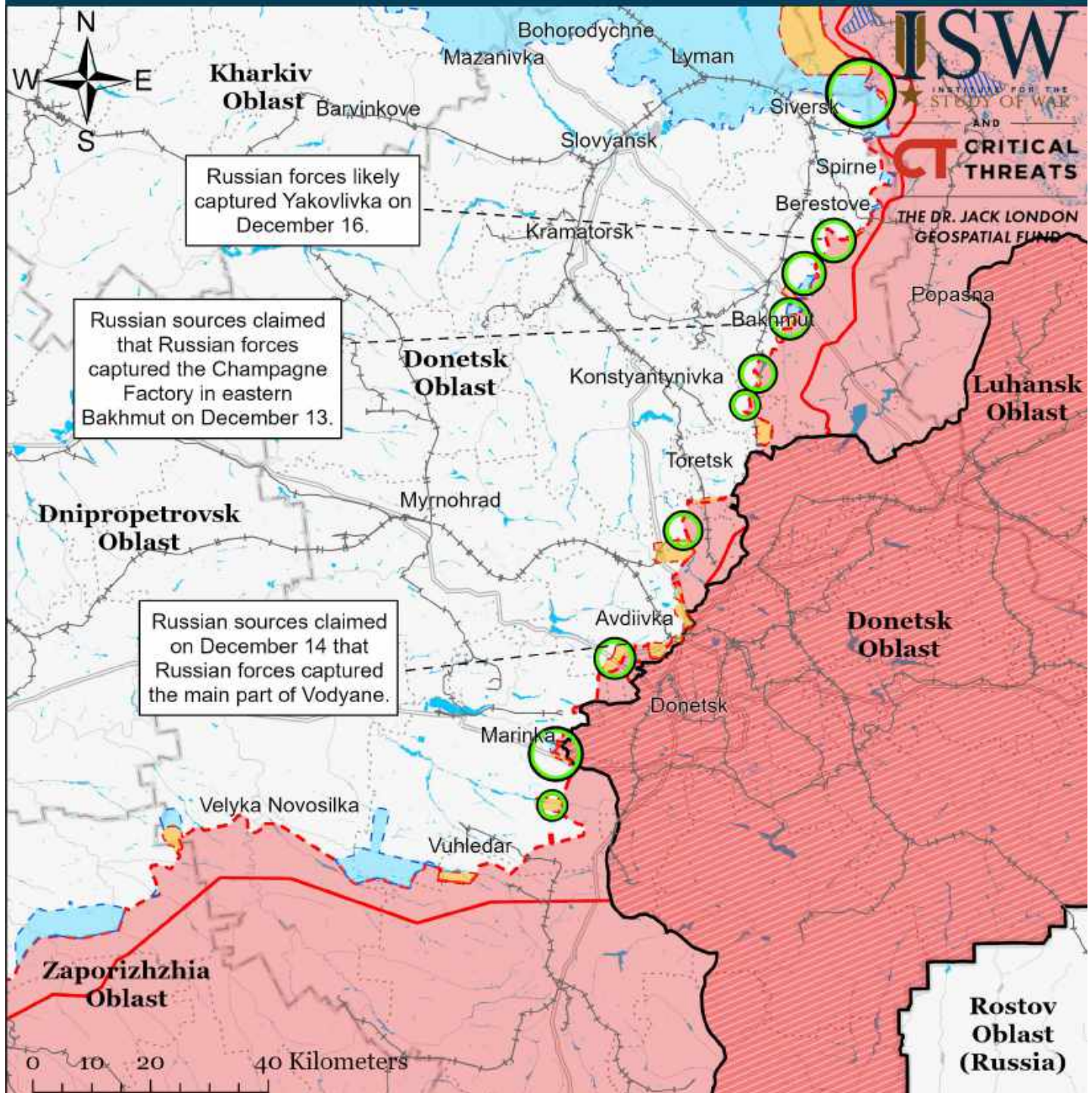
Assessed Control of Terrain Around Donetsk as of December 18, 2022, 3:00 PM ET



- Significant Fighting in the past 24 Hours
- Assessed Russian-controlled Ukrainian Territory
- ▨ Reported Ukrainian Partisan Warfare
- Russian-controlled Ukrainian Territory before February 24
- Claimed Russian Control over Ukrainian Territory
- - - Assessed Russian Advances in Ukraine*
- Claimed Ukrainian Counteroffensives

* Assessed Russian advances are areas where ISW assesses Russian forces have operated in or launched attacks against but do not control.

Assessed Control of Terrain Around Donetsk as of December 16, 2022, 3:00 PM ET

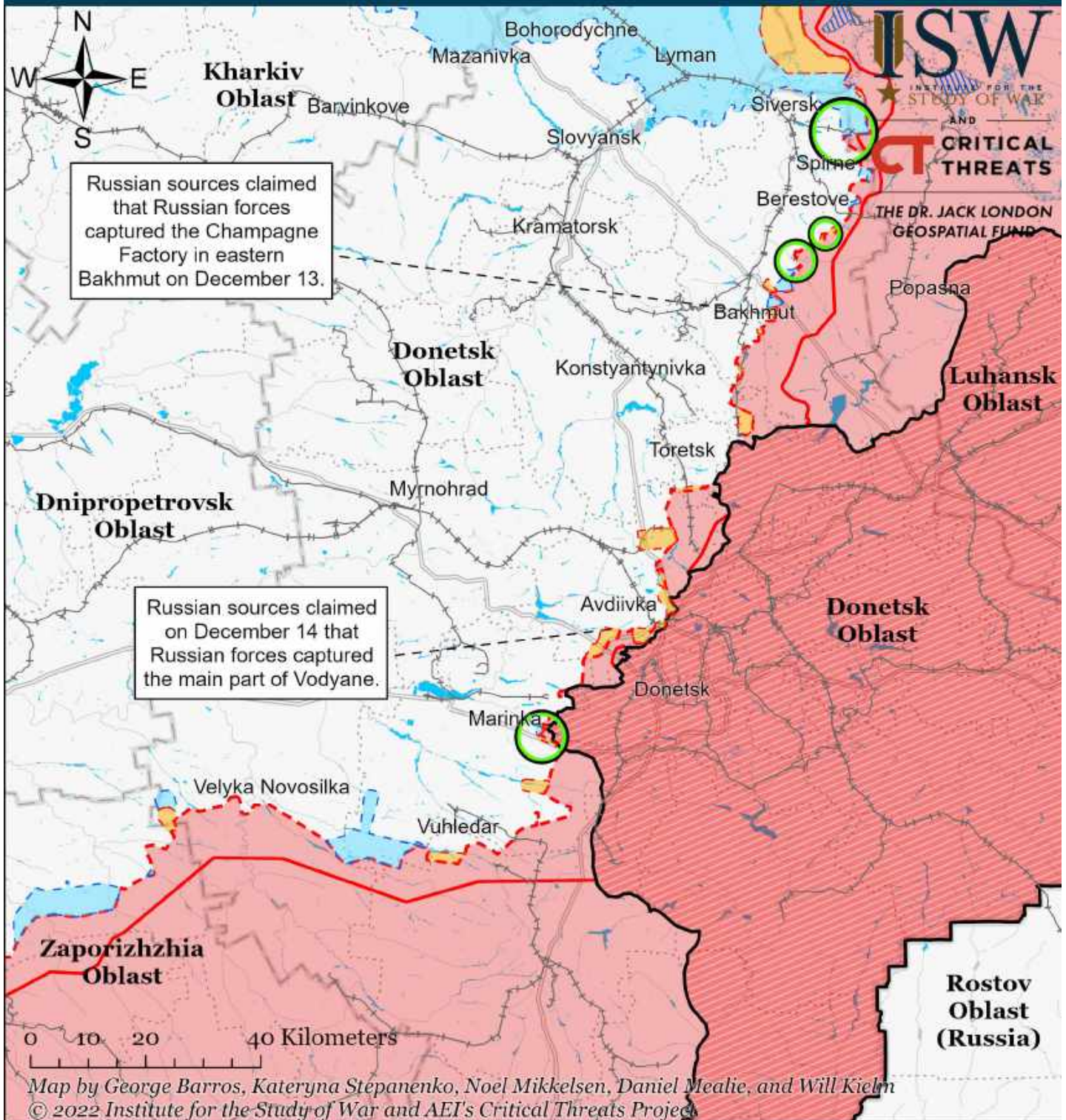


Map by George Barros, Kateryna Stepanenko, Noel Mikkelsen, Daniel Mealie, and Will Kieln
© 2022 Institute for the Study of War and AEI's Critical Threats Project

- | | | |
|---|--|-------------------------------------|
| Significant Fighting in the past 24 Hours | Assessed Russian-controlled Ukrainian Territory | Major Railroads |
| Russian-controlled Ukrainian Territory before February 24 | Claimed Russian Control over Ukrainian Territory | Reported Ukrainian Partisan Warfare |
| Assessed Russian Advances in Ukraine* | Claimed Ukrainian Counteroffensives | |

* Assessed Russian advances are areas where ISW assesses Russian forces have operated in or launched attacks against but do not control.

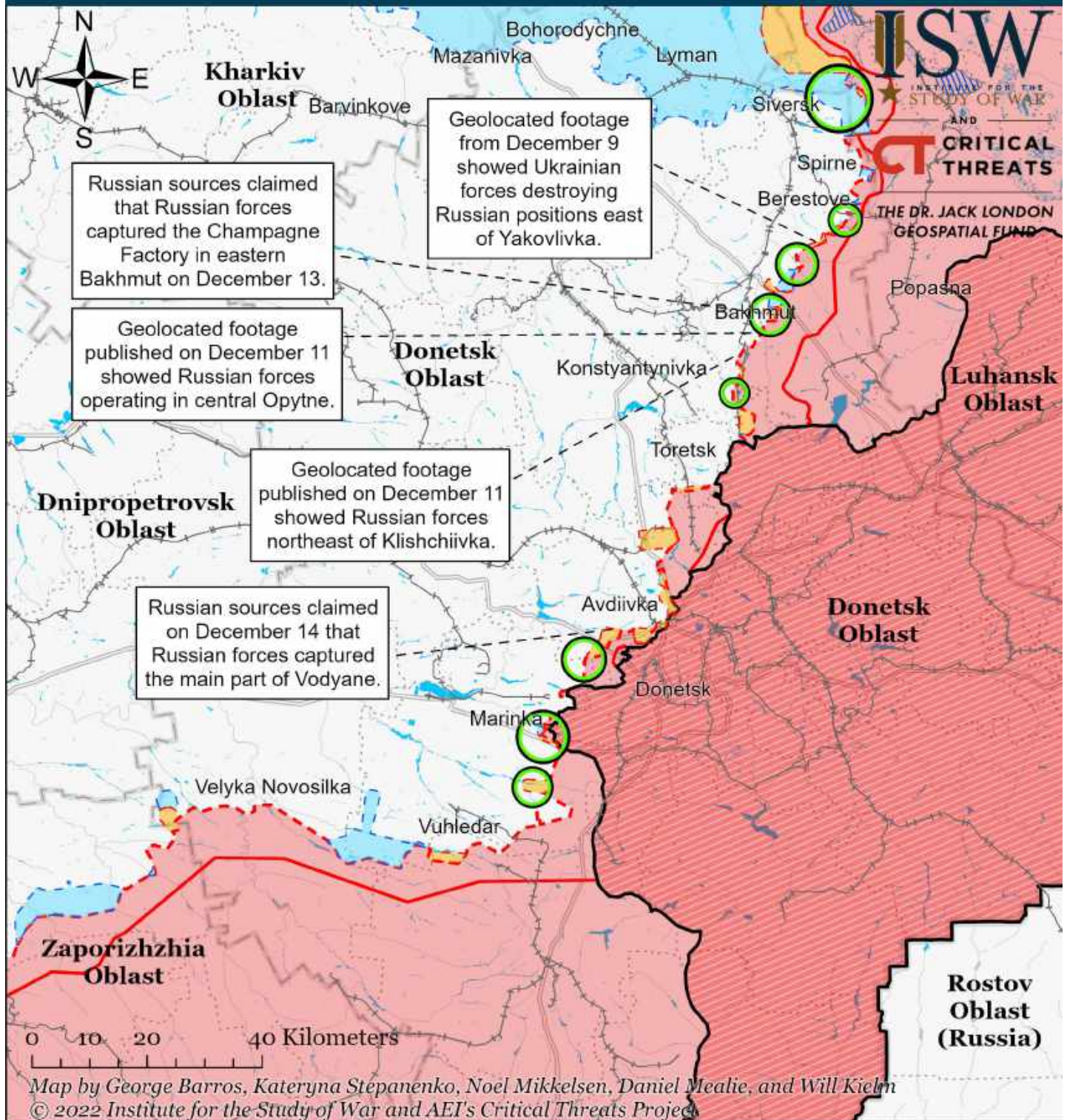
Assessed Control of Terrain Around Donetsk as of December 15, 2022, 3:00 PM ET



- Significant Fighting in the past 24 Hours
- Assessed Russian-controlled Ukrainian Territory
- ⊕ Major Railroads
- Russian-controlled Ukrainian Territory before February 24
- Claimed Russian Control over Ukrainian Territory
- ▨ Reported Ukrainian Partisan Warfare
- - - Assessed Russian Advances in Ukraine*
- Claimed Ukrainian Counteroffensives

* Assessed Russian advances are areas where ISW assesses Russian forces have operated in or launched attacks against but do not control.

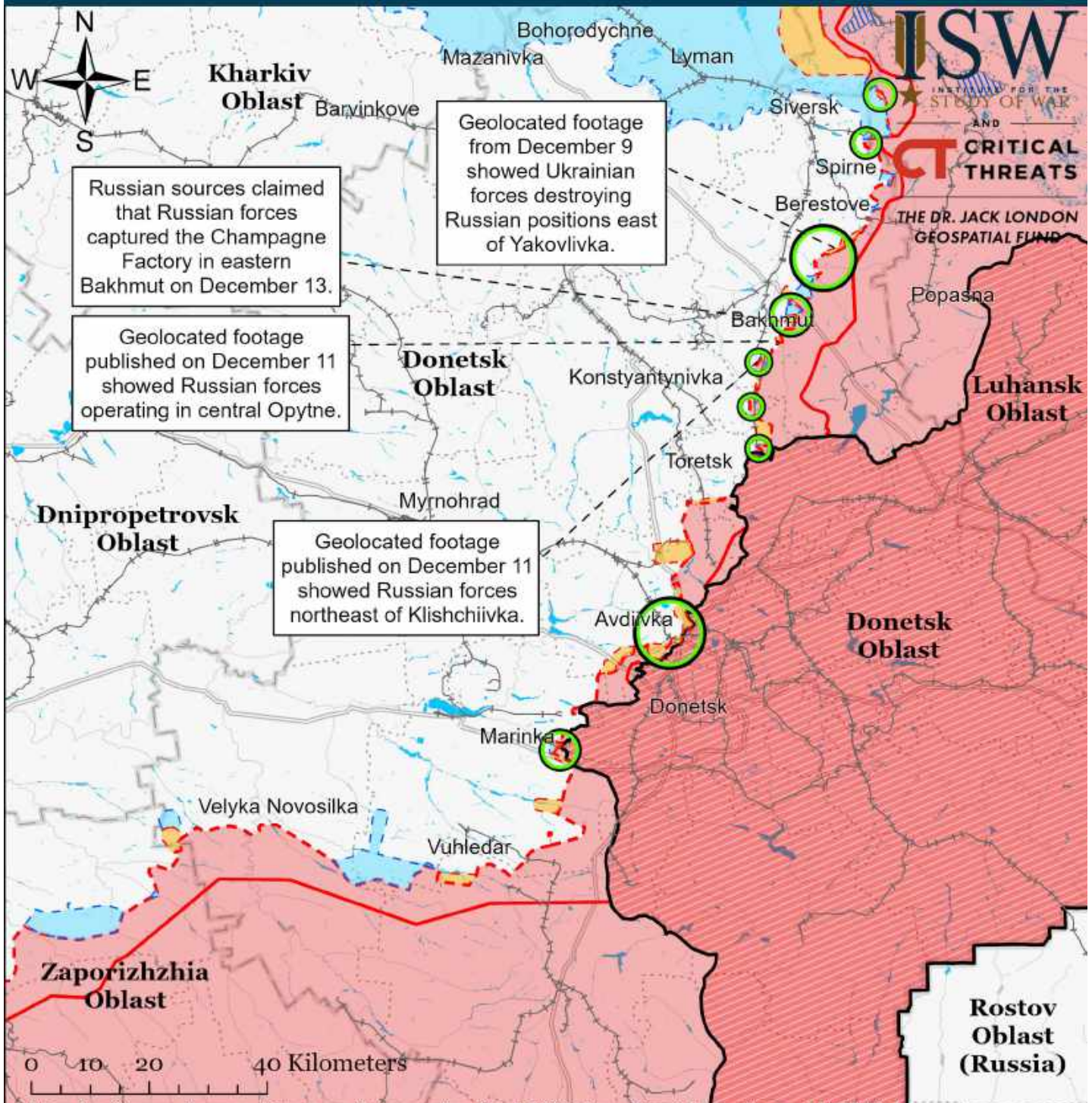
Assessed Control of Terrain Around Donetsk as of December 14, 2022, 3:00 PM ET



- Significant Fighting in the past 24 Hours
- Russian-controlled Ukrainian Territory before February 24
- Assessed Russian Advances in Ukraine*
- Assessed Russian-controlled Ukrainian Territory
- Claimed Russian Control over Ukrainian Territory
- Claimed Ukrainian Counteroffensives
- Major Railroads
- Reported Ukrainian Partisan Warfare

* Assessed Russian advances are areas where ISW assesses Russian forces have operated in or launched attacks against but do not control.

Assessed Control of Terrain Around Donetsk as of December 13, 2022, 3:00 PM ET

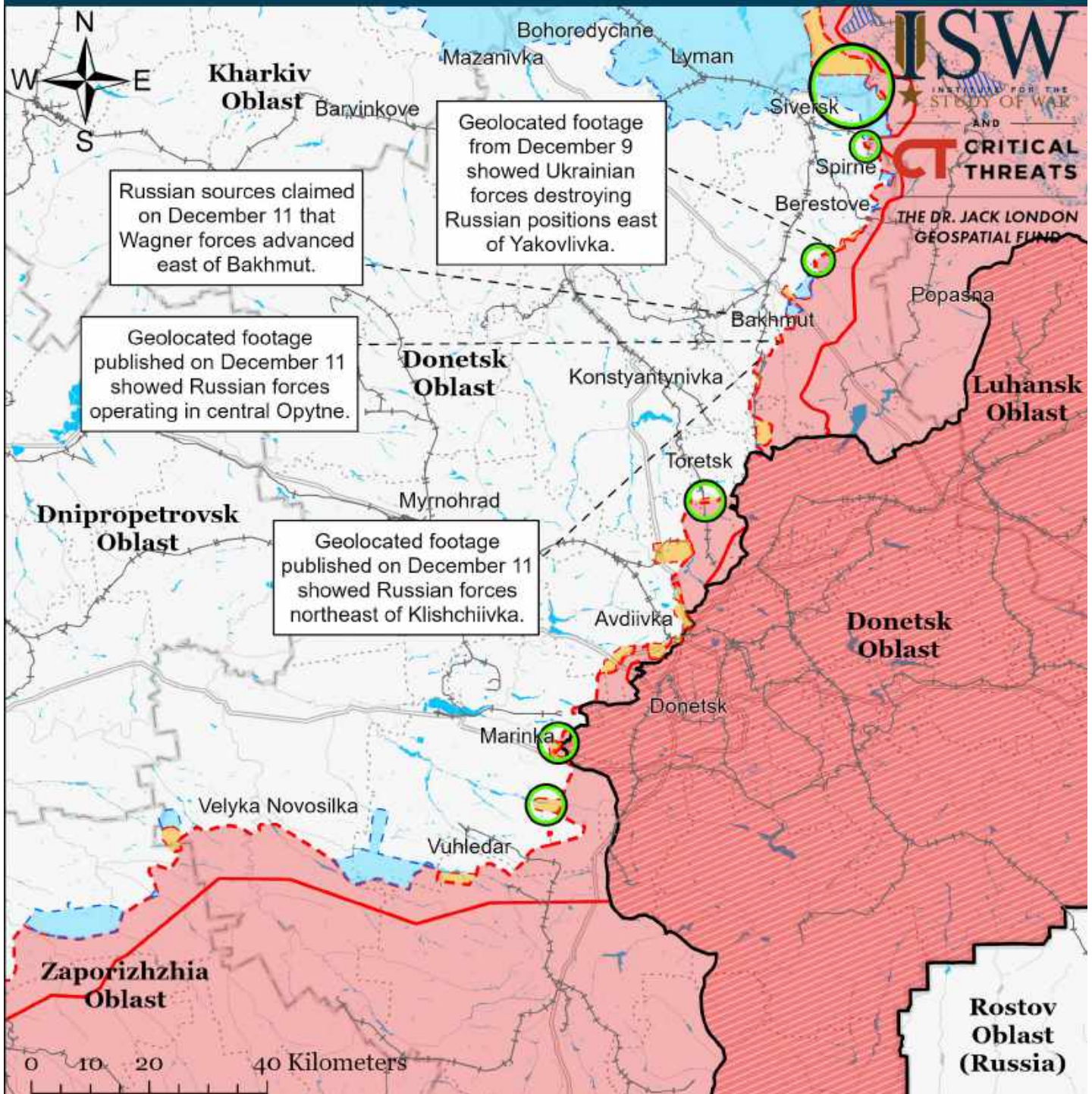


Map by George Barros, Kateryna Stepanenko, Noel Mikkelsen, Daniel Mealie, and Will Kiehn
© 2022 Institute for the Study of War and AEI's Critical Threats Project

- | | | |
|---|--|-------------------------------------|
| Significant Fighting in the past 24 Hours | Assessed Russian-controlled Ukrainian Territory | Major Railroads |
| Russian-controlled Ukrainian Territory before February 24 | Claimed Russian Control over Ukrainian Territory | Reported Ukrainian Partisan Warfare |
| Assessed Russian Advances in Ukraine* | Claimed Ukrainian Counteroffensives | |

* Assessed Russian advances are areas where ISW assesses Russian forces have operated in or launched attacks against but do not control.

Assessed Control of Terrain Around Donetsk as of December 12, 2022, 3:00 PM ET

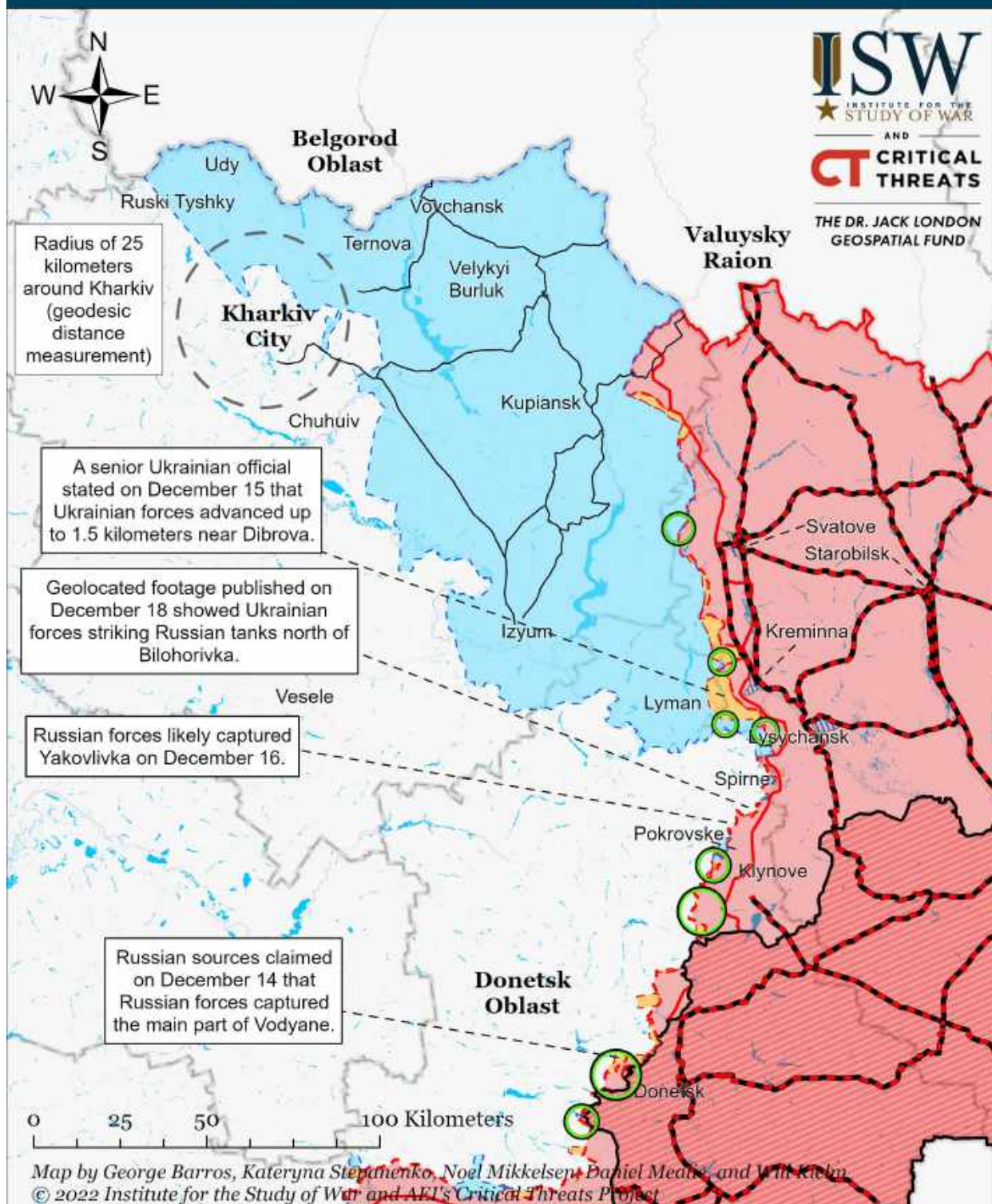


Map by George Barros, Kateryna Stepanenko, Noel Mikkelsen, Daniel Mealie, and Will Kiehn
© 2022 Institute for the Study of War and AEI's Critical Threats Project

- Significant Fighting in the past 24 Hours
- Assessed Russian-controlled Ukrainian Territory
- Reported Ukrainian Partisan Warfare
- Russian-controlled Ukrainian Territory before February 24
- Claimed Russian Control over Ukrainian Territory
- Major Railroads
- Assessed Russian Advances in Ukraine*
- Claimed Ukrainian Counteroffensives

* Assessed Russian advances are areas where ISW assesses Russian forces have operated in or launched attacks against but do not control.

Assessed Control of Terrain Around Kharkiv as of December 18, 2022, 3:00 PM ET



○ Significant Fighting in the past 24 Hours

— Key Ukrainian Roads

— Russian Ground Lines of Communication

■ Russian-controlled Ukrainian Territory before February 24

■ Assessed Russian Advances in Ukraine*

■ Assessed Russian-controlled Ukrainian Territory

■ Claimed Russian Control over Ukrainian Territory

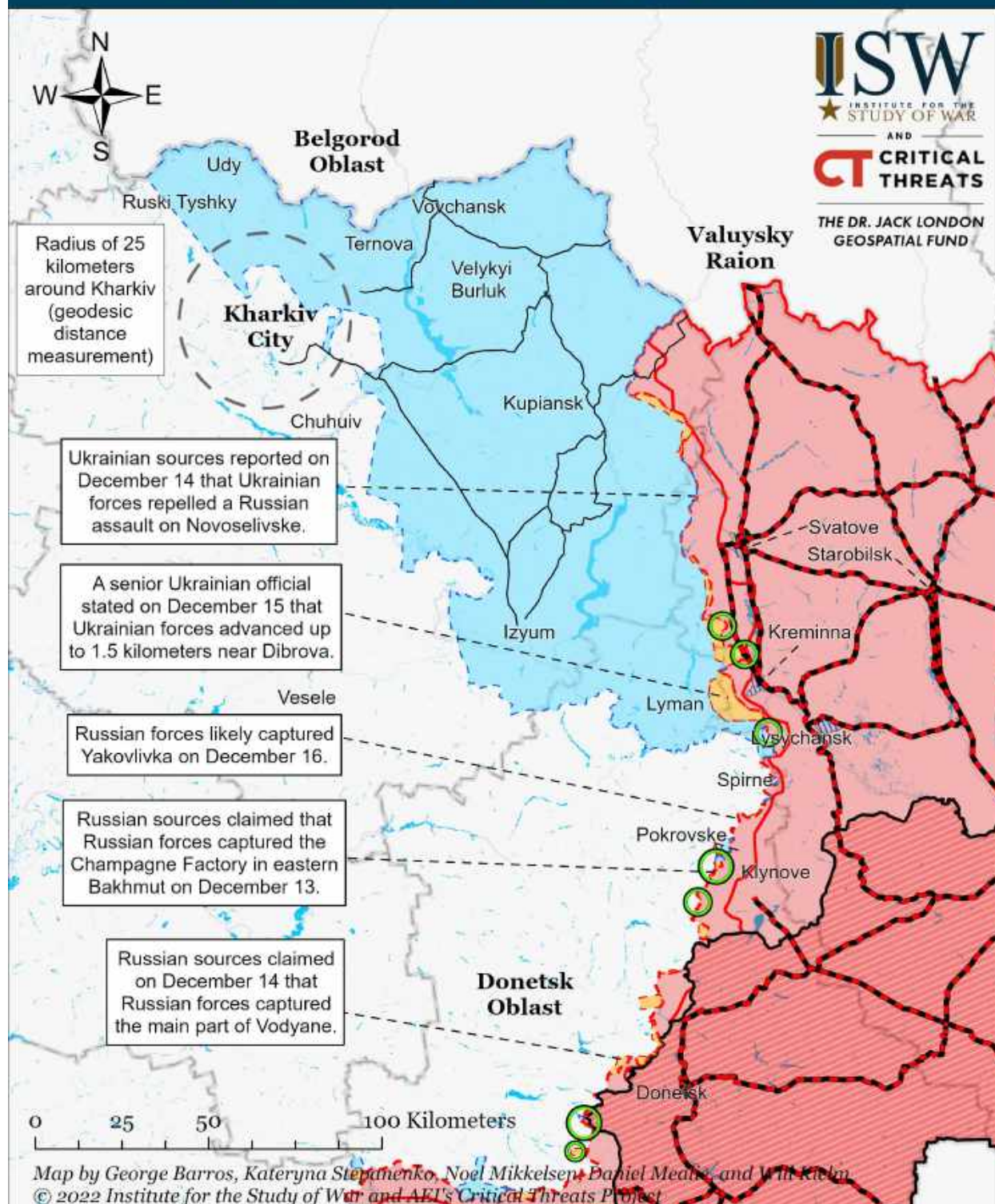
■ Claimed Ukrainian Counteroffensives

■ Reported Ukrainian Partisan Warfare

* Assessed Russian advances are areas where ISW assesses Russian forces have operated in or launched attacks against but do not control.

Luhansk Oblast Head Serhiy Haidai stated on December 3 that Ukrainian forces liberated 13 unspecified settlements in Luhansk Oblast. ISW will update our maps when independent sources disclose the area of Ukrainian advances.

Assessed Control of Terrain Around Kharkiv as of December 17, 2022, 3:00 PM ET



○ Significant Fighting in the past 24 Hours

— Key Ukrainian Roads

— Russian Ground Lines of Communication

▬ Russian-controlled Ukrainian Territory before February 24

▬ Assessed Russian Advances in Ukraine*

▬ Assessed Russian-controlled Ukrainian Territory

▬ Claimed Russian Control over Ukrainian Territory

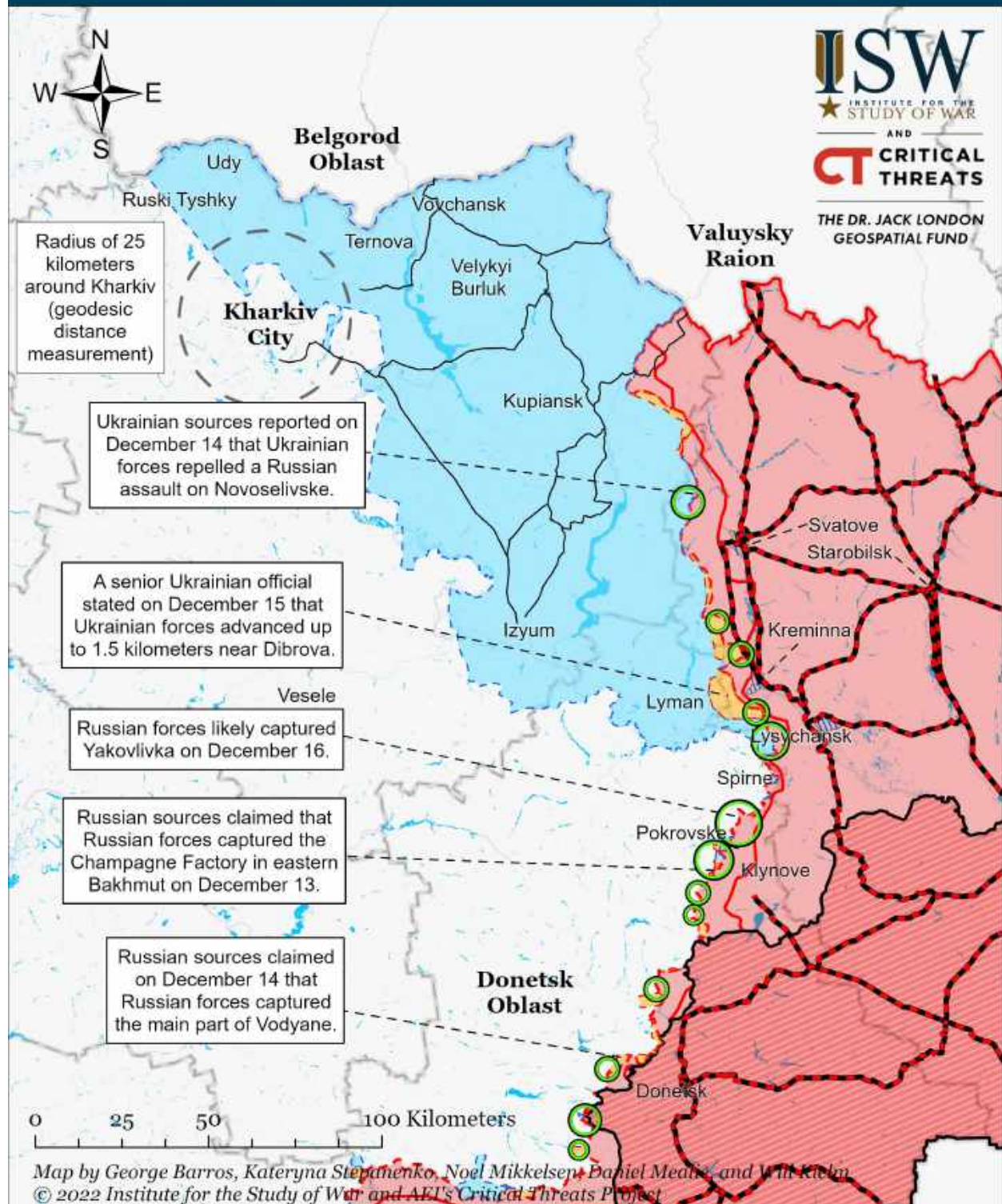
▬ Claimed Ukrainian Counteroffensives

▬ Reported Ukrainian Partisan Warfare

* Assessed Russian advances are areas where ISW assesses Russian forces have operated in or launched attacks against but do not control.

Luhansk Oblast Head Serhiy Haidai stated on December 3 that Ukrainian forces liberated 13 unspecified settlements in Luhansk Oblast. ISW will update our maps when independent sources disclose the area of Ukrainian advances.

Assessed Control of Terrain Around Kharkiv as of December 16, 2022, 3:00 PM ET



○ Significant Fighting in the past 24 Hours

— Key Ukrainian Roads

— Russian Ground Lines of Communication

— Russian-controlled Ukrainian Territory before February 24

— Assessed Russian Advances in Ukraine*

— Assessed Russian-controlled Ukrainian Territory

— Claimed Russian Control over Ukrainian Territory

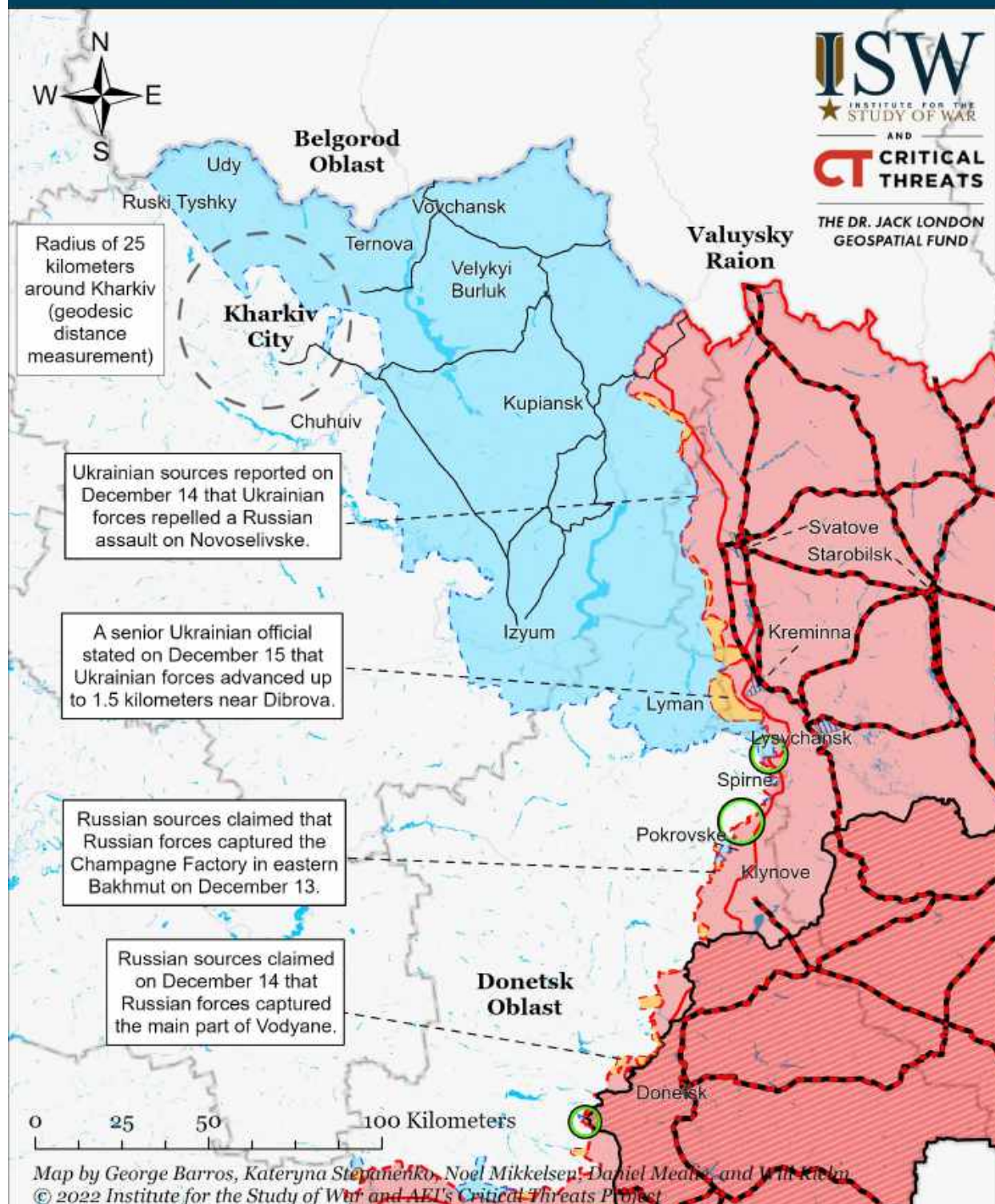
— Claimed Ukrainian Counteroffensives

— Reported Ukrainian Partisan Warfare

* Assessed Russian advances are areas where ISW assesses Russian forces have operated in or launched attacks against but do not control.

Luhansk Oblast Head Serhiy Haidai stated on December 3 that Ukrainian forces liberated 13 unspecified settlements in Luhansk Oblast. ISW will update our maps when independent sources disclose the area of Ukrainian advances.

Assessed Control of Terrain Around Kharkiv as of December 15, 2022, 3:00 PM ET



○ Significant Fighting in the past 24 Hours

— Key Ukrainian Roads

— Russian Ground Lines of Communication

■ Russian-controlled Ukrainian Territory before February 24

■ Assessed Russian Advances in Ukraine*

■ Assessed Russian-controlled Ukrainian Territory

■ Claimed Russian Control over Ukrainian Territory

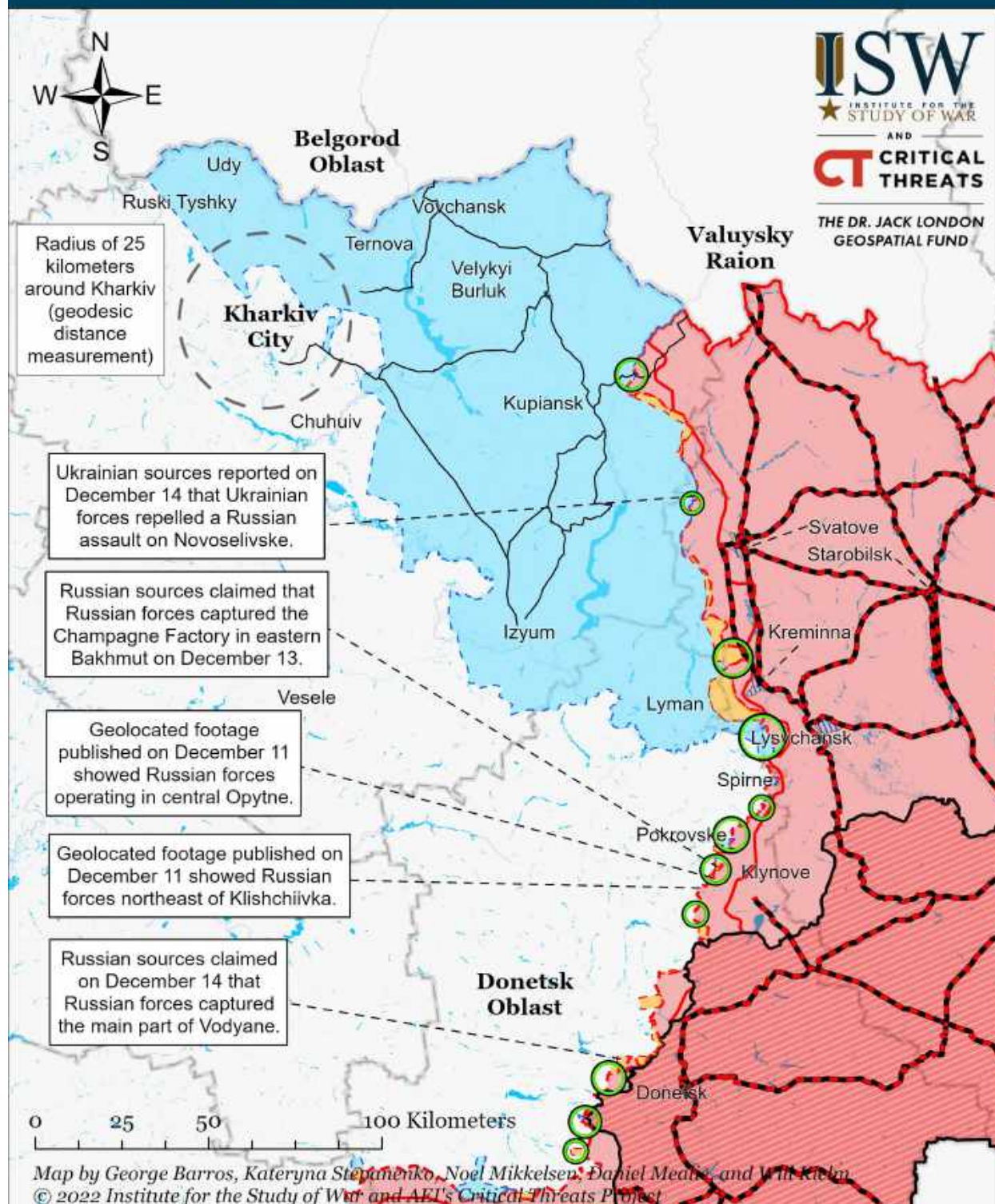
■ Claimed Ukrainian Counteroffensives

■ Reported Ukrainian Partisan Warfare

* Assessed Russian advances are areas where ISW assesses Russian forces have operated in or launched attacks against but do not control.

Luhansk Oblast Head Serhiy Haidai stated on December 3 that Ukrainian forces liberated 13 unspecified settlements in Luhansk Oblast. ISW will update our maps when independent sources disclose the area of Ukrainian advances.

Assessed Control of Terrain Around Kharkiv as of December 14, 2022, 3:00 PM ET



○ Significant Fighting in the past 24 Hours

— Key Ukrainian Roads

— Russian Ground Lines of Communication

■ Russian-controlled Ukrainian Territory before February 24

■ Assessed Russian Advances in Ukraine*

■ Assessed Russian-controlled Ukrainian Territory

■ Claimed Russian Control over Ukrainian Territory

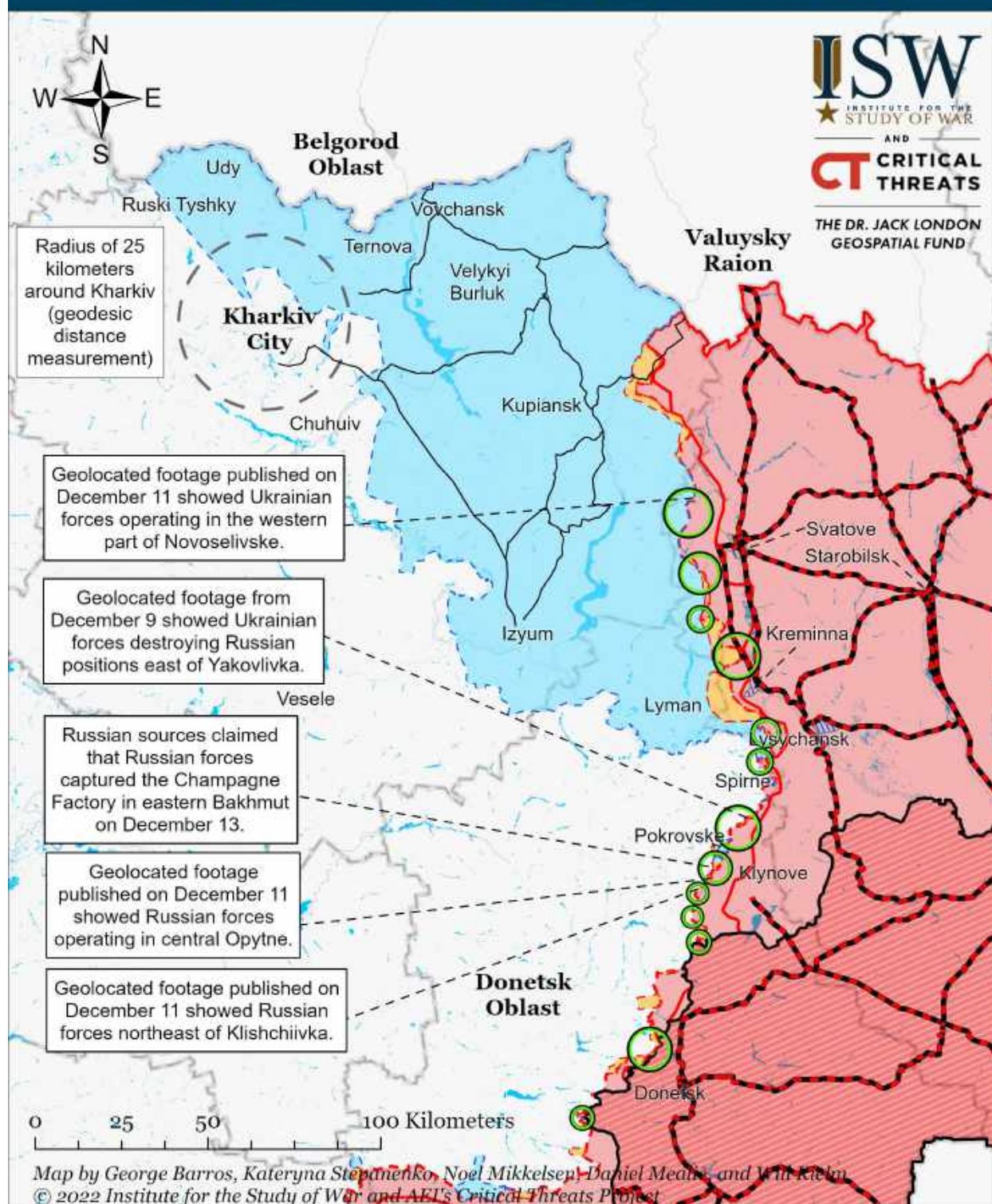
■ Claimed Ukrainian Counteroffensives

■ Reported Ukrainian Partisan Warfare

* Assessed Russian advances are areas where ISW assesses Russian forces have operated in or launched attacks against but do not control.

Luhansk Oblast Head Serhiy Haidai stated on December 3 that Ukrainian forces liberated 13 unspecified settlements in Luhansk Oblast. ISW will update our maps when independent sources disclose the area of Ukrainian advances.

Assessed Control of Terrain Around Kharkiv as of December 13, 2022, 3:00 PM ET



○ Significant Fighting in the past 24 Hours

— Key Ukrainian Roads

— Russian Ground Lines of Communication

■ Russian-controlled Ukrainian Territory before February 24

■ Assessed Russian Advances in Ukraine*

■ Assessed Russian-controlled Ukrainian Territory

■ Claimed Russian Control over Ukrainian Territory

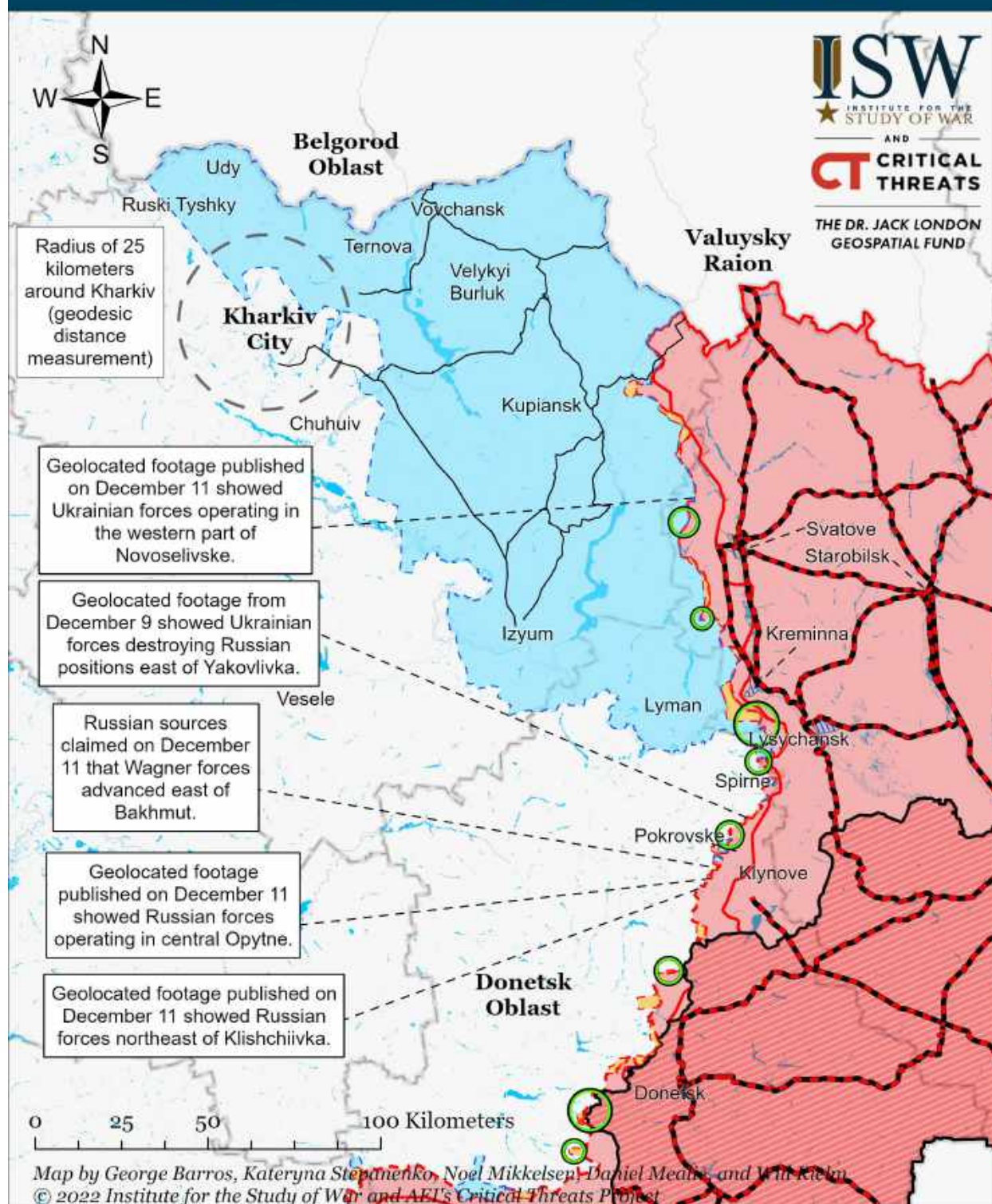
■ Claimed Ukrainian Counteroffensives

■ Reported Ukrainian Partisan Warfare

* Assessed Russian advances are areas where ISW assesses Russian forces have operated in or launched attacks against but do not control.

Luhansk Oblast Head Serhiy Haidai stated on December 3 that Ukrainian forces liberated 13 unspecified settlements in Luhansk Oblast. ISW will update our maps when independent sources disclose the area of Ukrainian advances.

Assessed Control of Terrain Around Kharkiv as of December 12, 2022, 3:00 PM ET



- | | | |
|---|---|--|
| Significant Fighting in the past 24 Hours | Russian-controlled Ukrainian Territory before February 24 | Claimed Russian Control over Ukrainian Territory |
| Key Ukrainian Roads | Assessed Russian Advances in Ukraine* | Claimed Ukrainian Counteroffensives |
| Russian Ground Lines of Communication | Assessed Russian-controlled Ukrainian Territory | Reported Ukrainian Partisan Warfare |

* Assessed Russian advances are areas where ISW assesses Russian forces have operated in or launched attacks against but do not control.

Luhansk Oblast Head Serhiy Haidai stated on December 3 that Ukrainian forces liberated 13 unspecified settlements in Luhansk Oblast. ISW will update our maps when independent sources disclose the area of Ukrainian advances.