

Assessed Control of Terrain in Ukraine and Main Russian Maneuver Axes as of February 20, 2023, 3:00 PM ET



Map by George Barros, Kateryna Stepanenko, Noel Mikkelsen, Daniel Mealie, Thomas Bergeron, Will Kielm, and Mitchell Belcher - © 2023 Institute for the Study of War and AEI's Critical Threats Project

* Assessed Russian advances are areas where ISW assesses Russian forces have operated in or launched attacks against but do not control.

Assessed Control of Terrain in Ukraine and Main Russian Maneuver Axes as of February 19, 2023, 3:00 PM ET



Map by George Barros, Kateryna Stepanenko, Noel Mikkelsen, Daniel Mealie, Thomas Bergeron, Will Kielm, and Mitchell Belcher - © 2023 Institute for the Study of War and AEI's Critical Threats Project

* Assessed Russian advances are areas where ISW assesses Russian forces have operated in or launched attacks against but do not control.

Assessed Control of Terrain in Ukraine and Main Russian Maneuver Axes as of February 18, 2023, 3:00 PM ET



Map by George Barros, Kateryna Stepanenko, Noel Mikkelsen, Daniel Mealie, Thomas Bergeron, Will Kielm, and Mitchell Belcher - © 2023 Institute for the Study of War and AEI's Critical Threats Project

* Assessed Russian advances are areas where ISW assesses Russian forces have operated in or launched attacks against but do not control.

Assessed Control of Terrain in Ukraine and Main Russian Maneuver Axes as of February 17, 2023, 3:00 PM ET



Map by George Barros, Kateryna Stepanenko, Noel Mikkelsen, Daniel Mealie, Thomas Bergeron, Will Kielm, and Mitchell Belcher - © 2023 Institute for the Study of War and AEI's Critical Threats Project

* Assessed Russian advances are areas where ISW assesses Russian forces have operated in or launched attacks against but do not control.

Assessed Control of Terrain in Ukraine and Main Russian Maneuver Axes as of February 16, 2023, 3:00 PM ET



Map by George Barros, Kateryna Stepanenko, Noel Mikkelsen, Daniel Mealie, Thomas Bergeron, Will Kielm, and Mitchell Belcher - © 2023 Institute for the Study of War and AEI's Critical Threats Project

* Assessed Russian advances are areas where ISW assesses Russian forces have operated in or launched attacks against but do not control.

Assessed Control of Terrain in Ukraine and Main Russian Maneuver Axes as of February 15, 2023, 3:00 PM ET



Map by George Barros, Kateryna Stepanenko, Noel Mikkelsen, Daniel Mealie, Thomas Bergeron, Will Kielm, and Mitchell Belcher - © 2023 Institute for the Study of War and AEI's Critical Threats Project

* Assessed Russian advances are areas where ISW assesses Russian forces have operated in or launched attacks against but do not control.

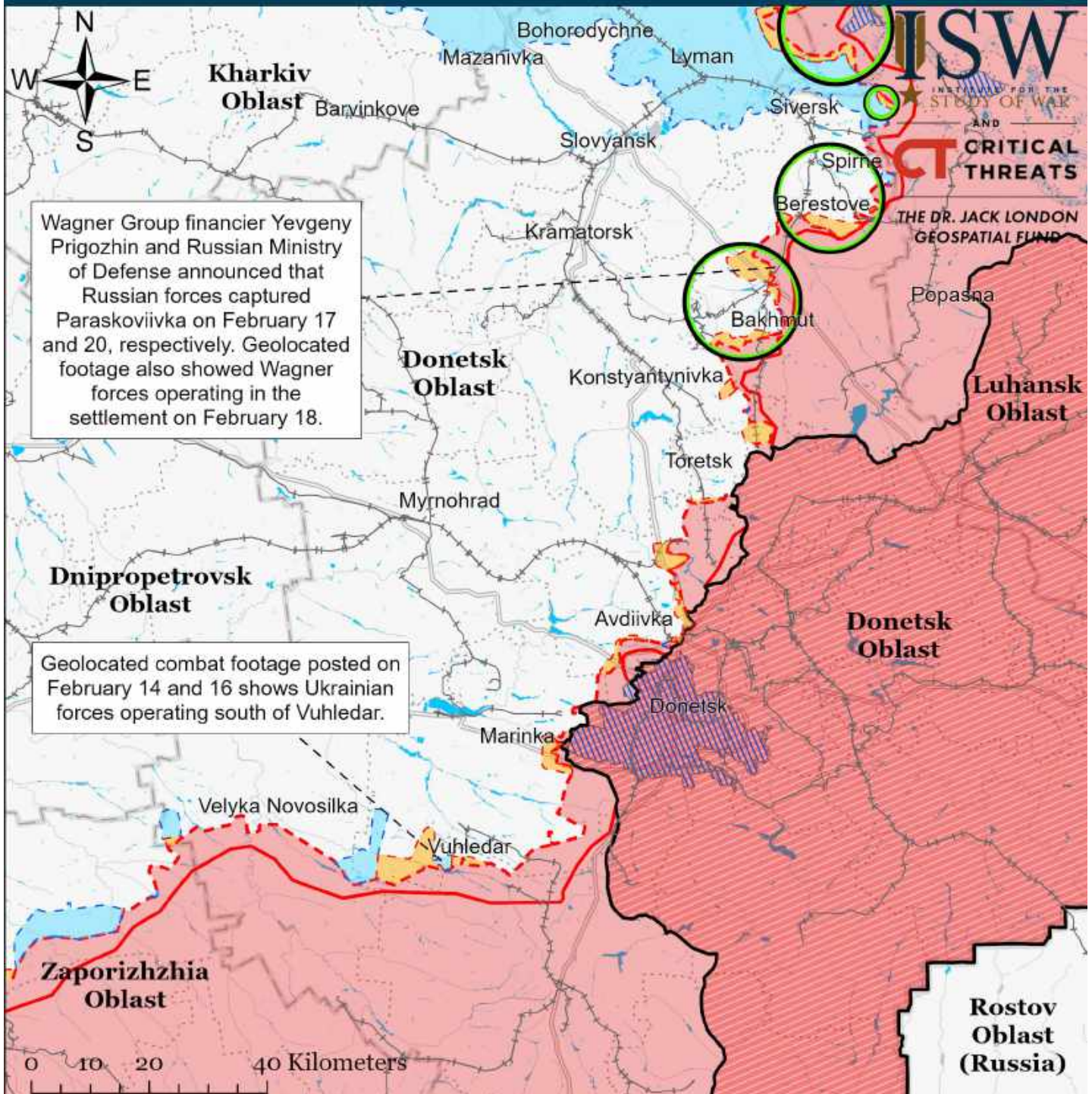
Assessed Control of Terrain in Ukraine and Main Russian Maneuver Axes as of February 14, 2023, 3:00 PM ET



Map by George Barros, Kateryna Stepanenko, Noel Mikkelsen, Daniel Mealie, Thomas Bergeron, Will Kielm, and Mitchell Belcher - © 2023 Institute for the Study of War and AEI's Critical Threats Project

* Assessed Russian advances are areas where ISW assesses Russian forces have operated in or launched attacks against but do not control.

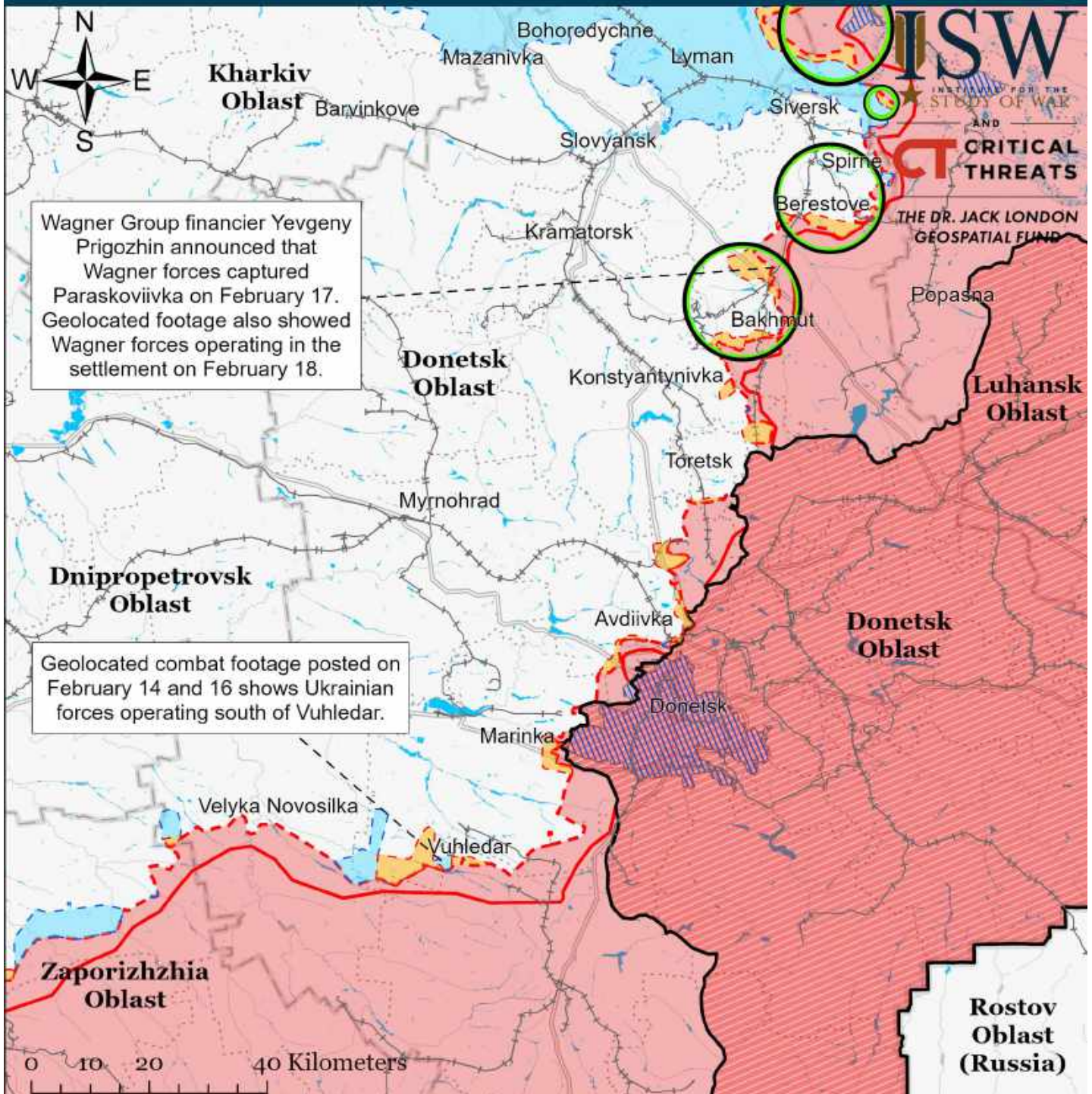
Assessed Control of Terrain Around Donetsk as of February 20, 2023, 3:00 PM ET



- Significant Fighting in the past 24 Hours
- Russian-controlled Ukrainian Territory before February 24
- Assessed Russian Advances in Ukraine*
- Assessed Russian-controlled Ukrainian Territory
- Claimed Russian Control over Ukrainian Territory
- Claimed Ukrainian Counteroffensives
- Major Railroads
- Reported Ukrainian Partisan Warfare

* Assessed Russian advances are areas where ISW assesses Russian forces have operated in or launched attacks against but do not control.

Assessed Control of Terrain Around Donetsk as of February 19, 2023, 3:00 PM ET

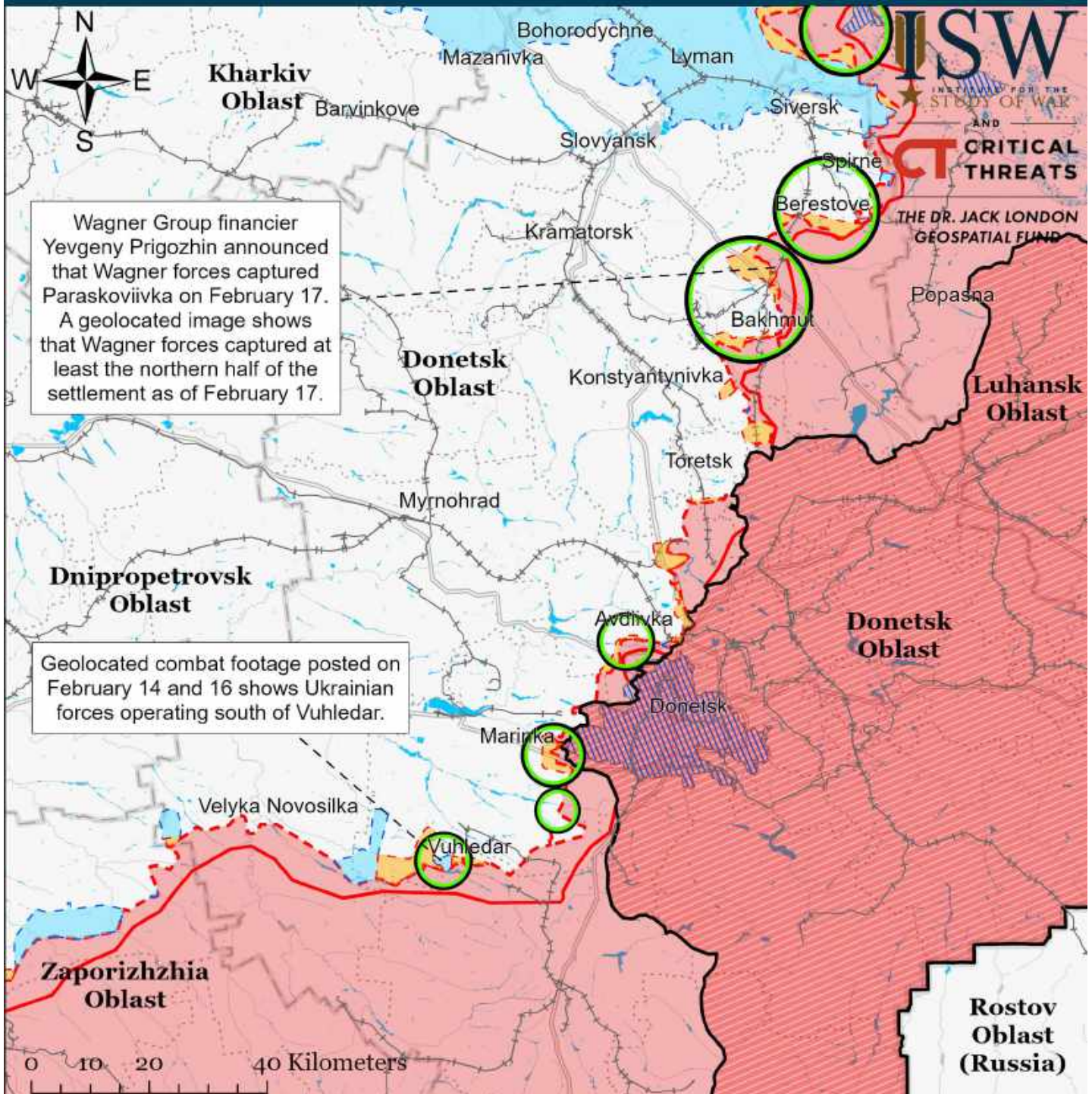


Map by George Barros, Kateryna Stepanenko, Noel Mikkelsen, Daniel Mealie, Thomas Bergeron, Will Kiern, and Mitchell Belcher - © 2023 Institute for the Study of War and AET's Critical Threats Project

- | | | |
|---|--|-------------------------------------|
| Significant Fighting in the past 24 Hours | Assessed Russian-controlled Ukrainian Territory | Major Railroads |
| Russian-controlled Ukrainian Territory before February 24 | Claimed Russian Control over Ukrainian Territory | Reported Ukrainian Partisan Warfare |
| Assessed Russian Advances in Ukraine* | Claimed Ukrainian Counteroffensives | |

* Assessed Russian advances are areas where ISW assesses Russian forces have operated in or launched attacks against but do not control.

Assessed Control of Terrain Around Donetsk as of February 18, 2023, 3:00 PM ET

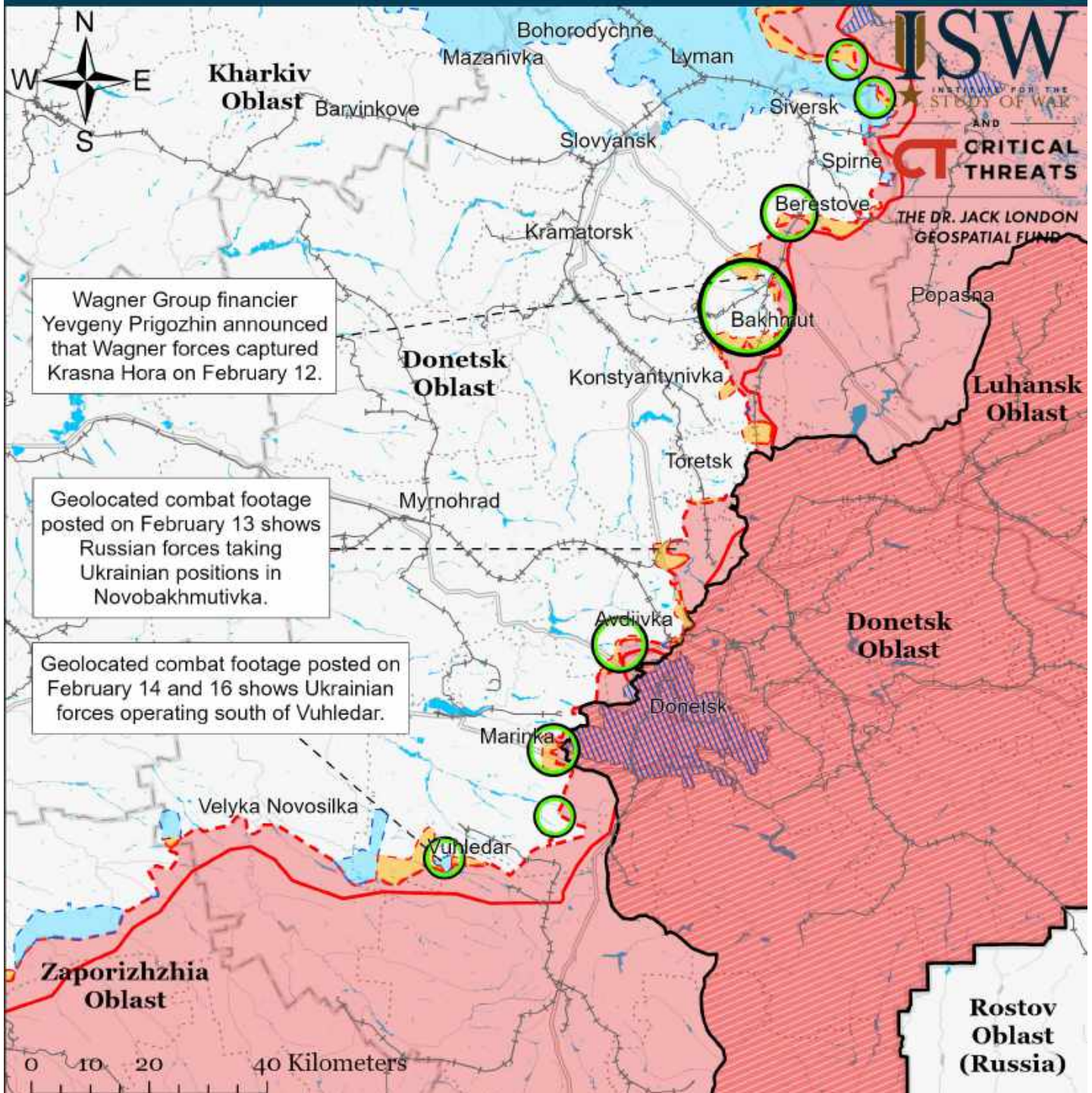


Map by George Barros, Kateryna Stepanenko, Noel Mikkelsen, Daniel Mealie, Thomas Bergeron, Will Kiern, and Mitchell Belcher - © 2023 Institute for the Study of War and AEI's Critical Threats Project

- Significant Fighting in the past 24 Hours
- Russian-controlled Ukrainian Territory before February 24
- Assessed Russian Advances in Ukraine*
- Assessed Russian-controlled Ukrainian Territory
- Claimed Russian Control over Ukrainian Territory
- Claimed Ukrainian Counteroffensives
- Major Railroads
- Reported Ukrainian Partisan Warfare

* Assessed Russian advances are areas where ISW assesses Russian forces have operated in or launched attacks against but do not control.

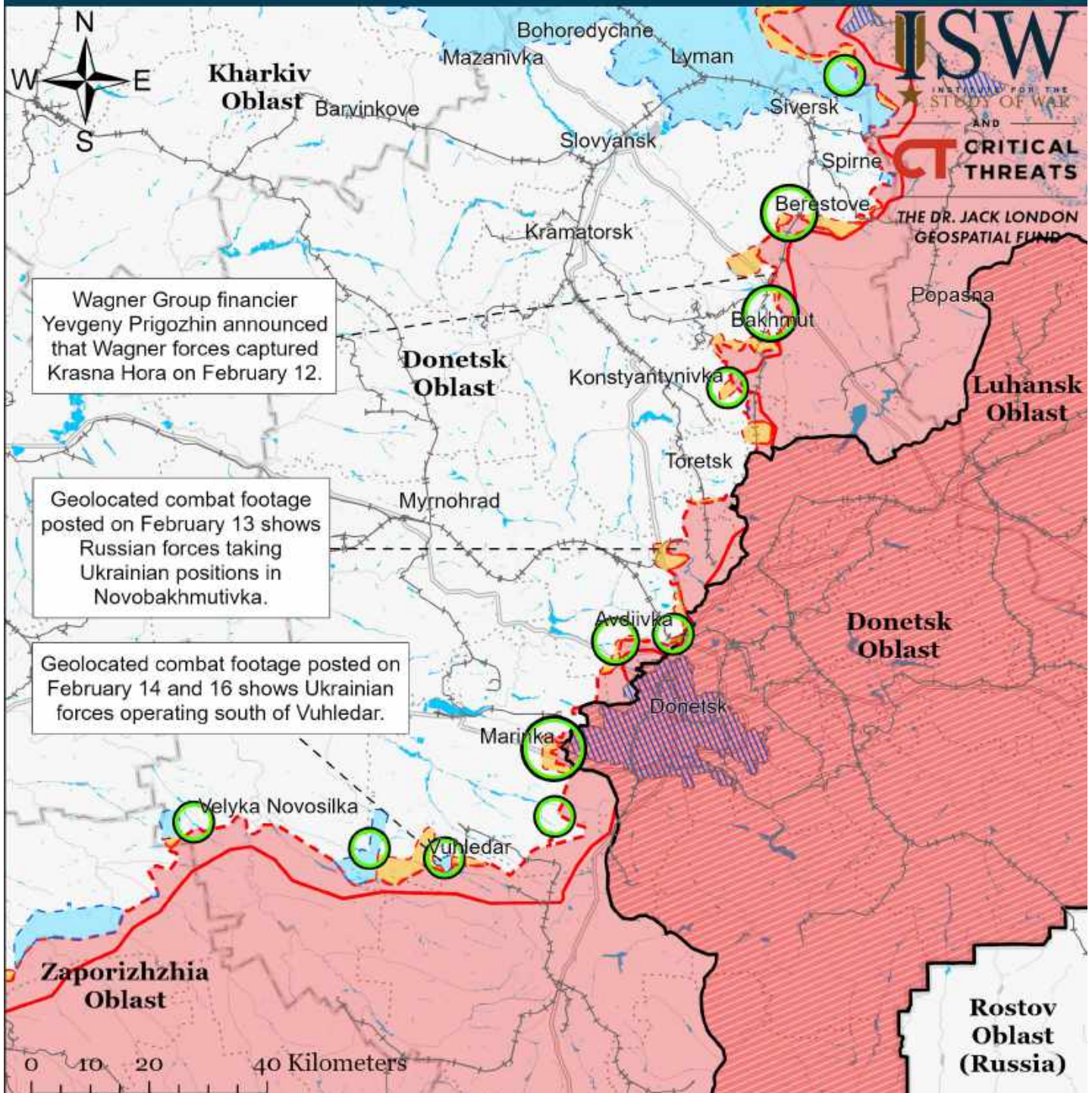
Assessed Control of Terrain Around Donetsk as of February 17, 2023, 3:00 PM ET



- Significant Fighting in the past 24 Hours
- Russian-controlled Ukrainian Territory before February 24
- Assessed Russian Advances in Ukraine*
- Assessed Russian-controlled Ukrainian Territory
- Claimed Russian Control over Ukrainian Territory
- Claimed Ukrainian Counteroffensives
- Major Railroads
- Reported Ukrainian Partisan Warfare

* Assessed Russian advances are areas where ISW assesses Russian forces have operated in or launched attacks against but do not control.

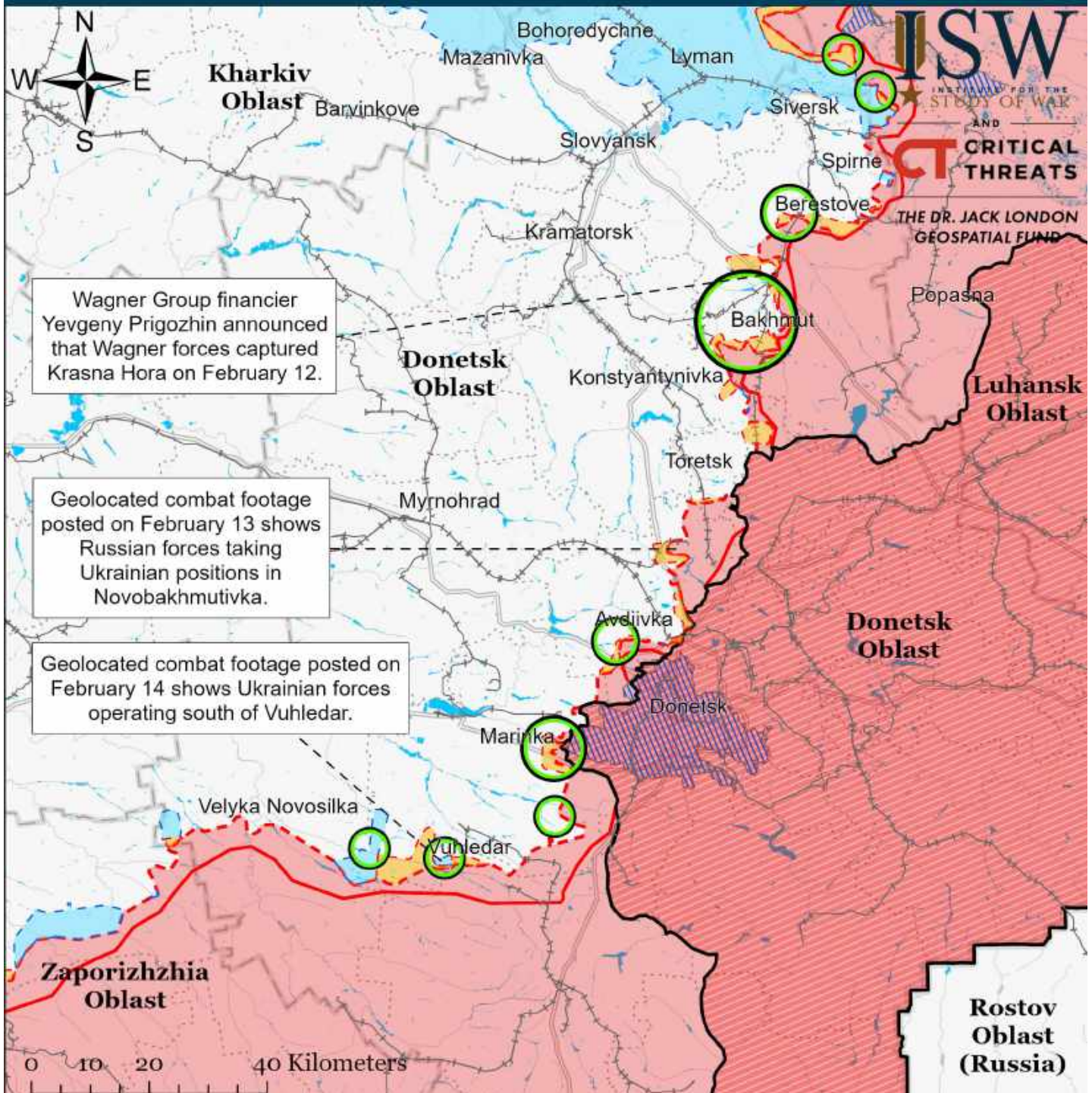
Assessed Control of Terrain Around Donetsk as of February 16, 2023, 3:00 PM ET



- Significant Fighting in the past 24 Hours
- Russian-controlled Ukrainian Territory before February 24
- Assessed Russian Advances in Ukraine*
- Assessed Russian-controlled Ukrainian Territory
- Claimed Russian Control over Ukrainian Territory
- Claimed Ukrainian Counteroffensives
- Major Railroads
- Reported Ukrainian Partisan Warfare

* Assessed Russian advances are areas where ISW assesses Russian forces have operated in or launched attacks against but do not control.

Assessed Control of Terrain Around Donetsk as of February 15, 2023, 3:00 PM ET

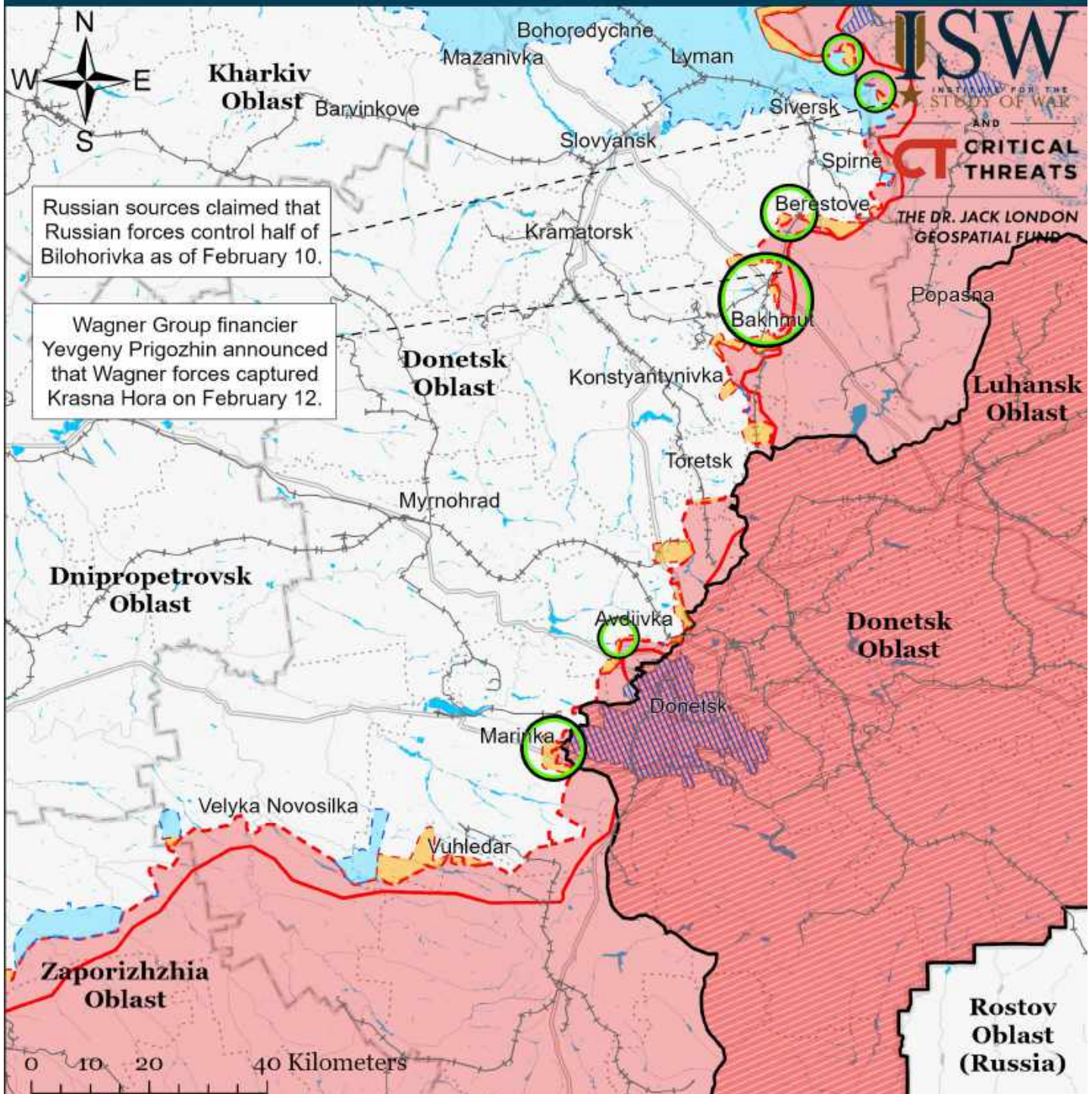


Map by George Barros, Kateryna Stepanenko, Noel Mikkelsen, Daniel Mealie, Thomas Bergeron, Will Kiern, and Mitchell Belcher - © 2023 Institute for the Study of War and AEI's Critical Threats Project

- Significant Fighting in the past 24 Hours
- Russian-controlled Ukrainian Territory before February 24
- Assessed Russian Advances in Ukraine*
- Assessed Russian-controlled Ukrainian Territory
- Claimed Russian Control over Ukrainian Territory
- Claimed Ukrainian Counteroffensives
- Major Railroads
- Reported Ukrainian Partisan Warfare

* Assessed Russian advances are areas where ISW assesses Russian forces have operated in or launched attacks against but do not control.

Assessed Control of Terrain Around Donetsk as of February 14, 2023, 3:00 PM ET

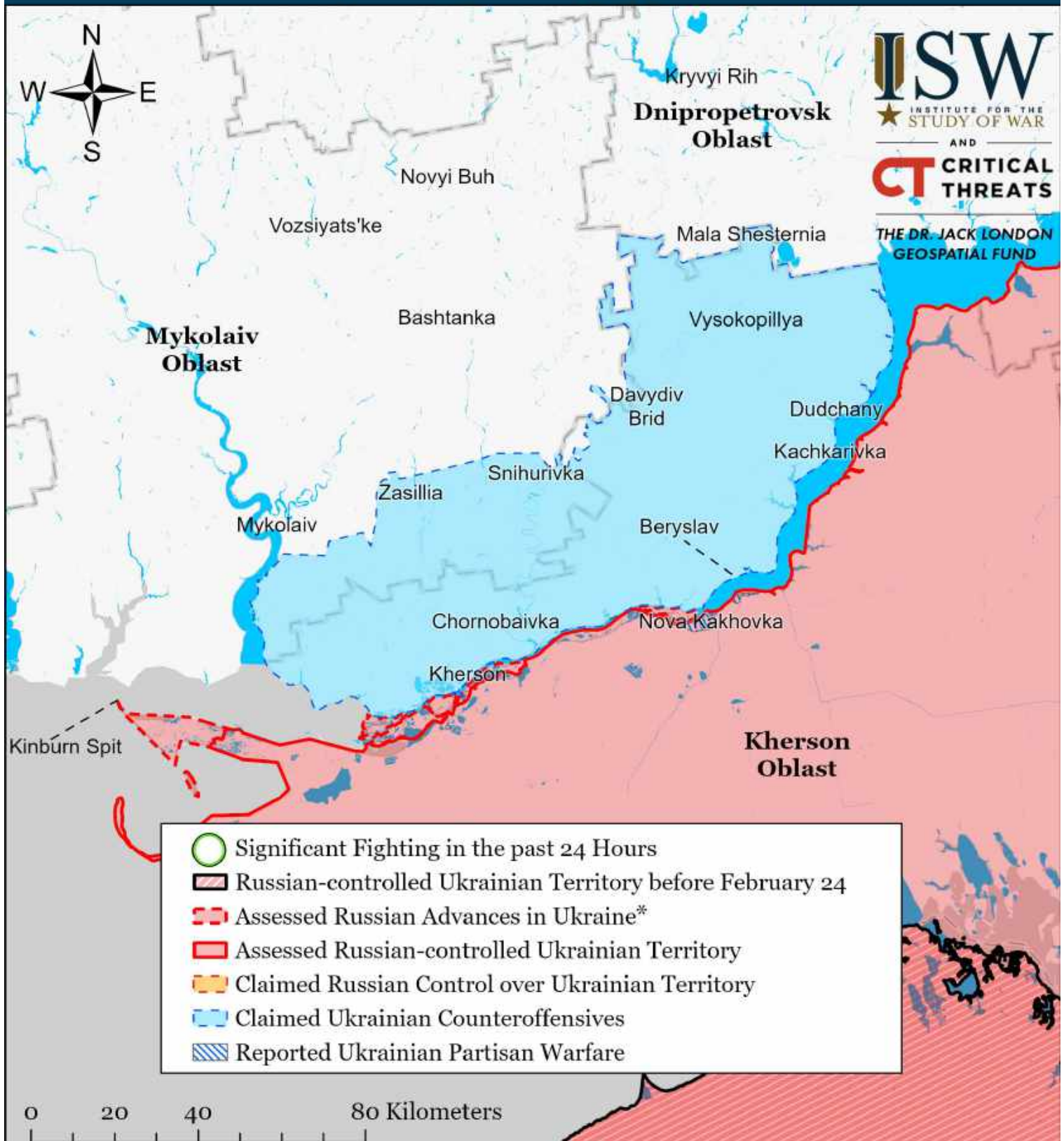


Map by George Barros, Kateryna Stepanenko, Noel Mikkelsen, Daniel Mealie, Thomas Bergeron, Will Kiern, and Mitchell Belcher - © 2023 Institute for the Study of War and AEI's Critical Threats Project

- | | | |
|---|--|-------------------------------------|
| Significant Fighting in the past 24 Hours | Assessed Russian-controlled Ukrainian Territory | Major Railroads |
| Russian-controlled Ukrainian Territory before February 24 | Claimed Russian Control over Ukrainian Territory | Reported Ukrainian Partisan Warfare |
| Assessed Russian Advances in Ukraine* | Claimed Ukrainian Counteroffensives | |

* Assessed Russian advances are areas where ISW assesses Russian forces have operated in or launched attacks against but do not control.

Assessed Control of Terrain Around Kherson and Mykolaiv as of February 20, 2023, 3:00 PM ET



Map by George Barros, Kateryna Stepanenko, Noel Mikkelsen, Daniel Mealie, Thomas Bergeron, Will Kielm, and Mitchell Belcher - © 2023 Institute for the Study of War and AEI's Critical Threats Project

* Assessed Russian advances are areas where ISW assesses Russian forces have operated in or launched attacks against but do not control.

Assessed Control of Terrain Around Kherson and Mykolaiv as of February 19, 2023, 3:00 PM ET



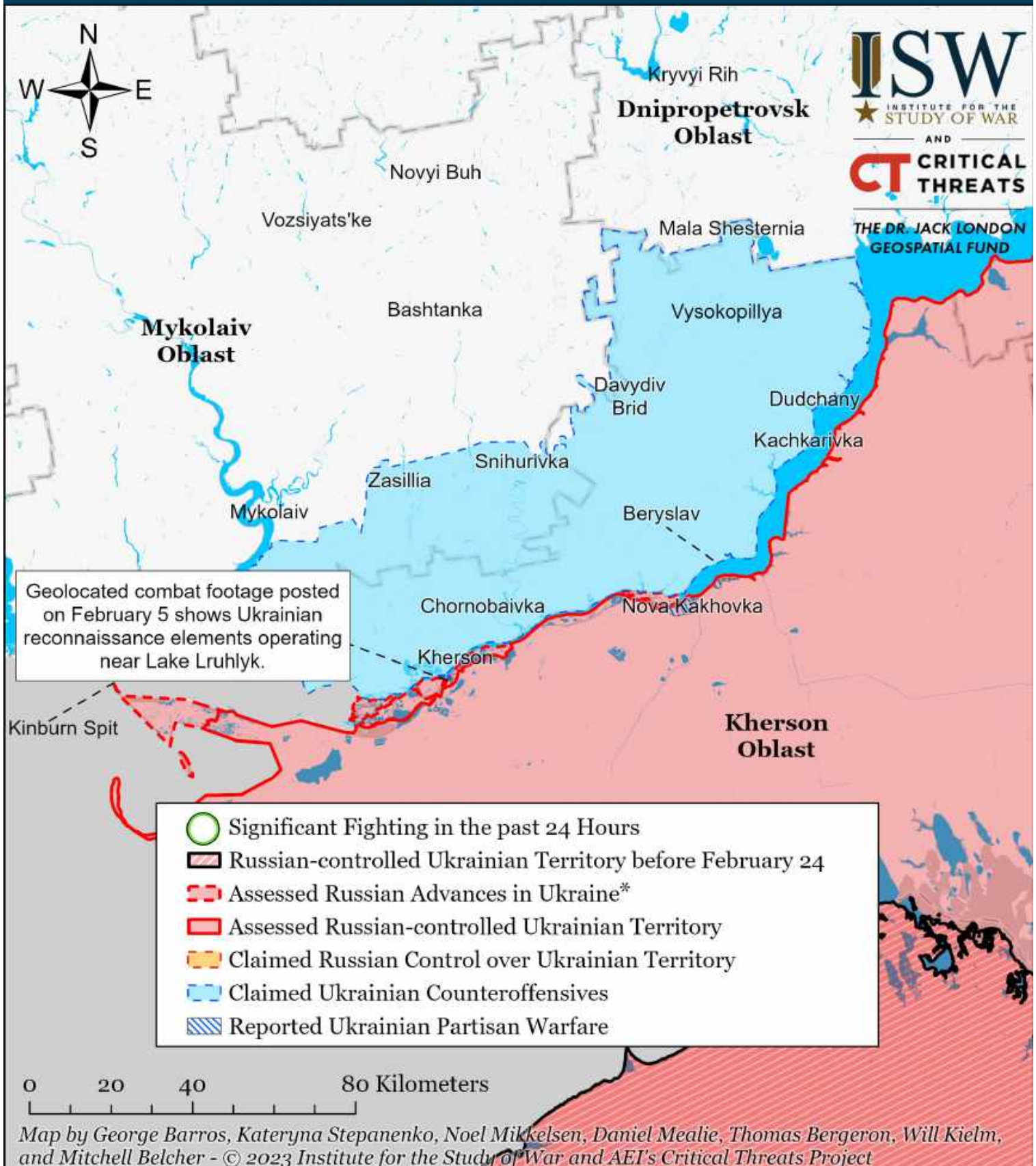
* Assessed Russian advances are areas where ISW assesses Russian forces have operated in or launched attacks against but do not control.

Assessed Control of Terrain Around Kherson and Mykolaiv as of February 18, 2023, 3:00 PM ET



* Assessed Russian advances are areas where ISW assesses Russian forces have operated in or launched attacks against but do not control.

Assessed Control of Terrain Around Kherson and Mykolaiv as of February 17, 2023, 3:00 PM ET



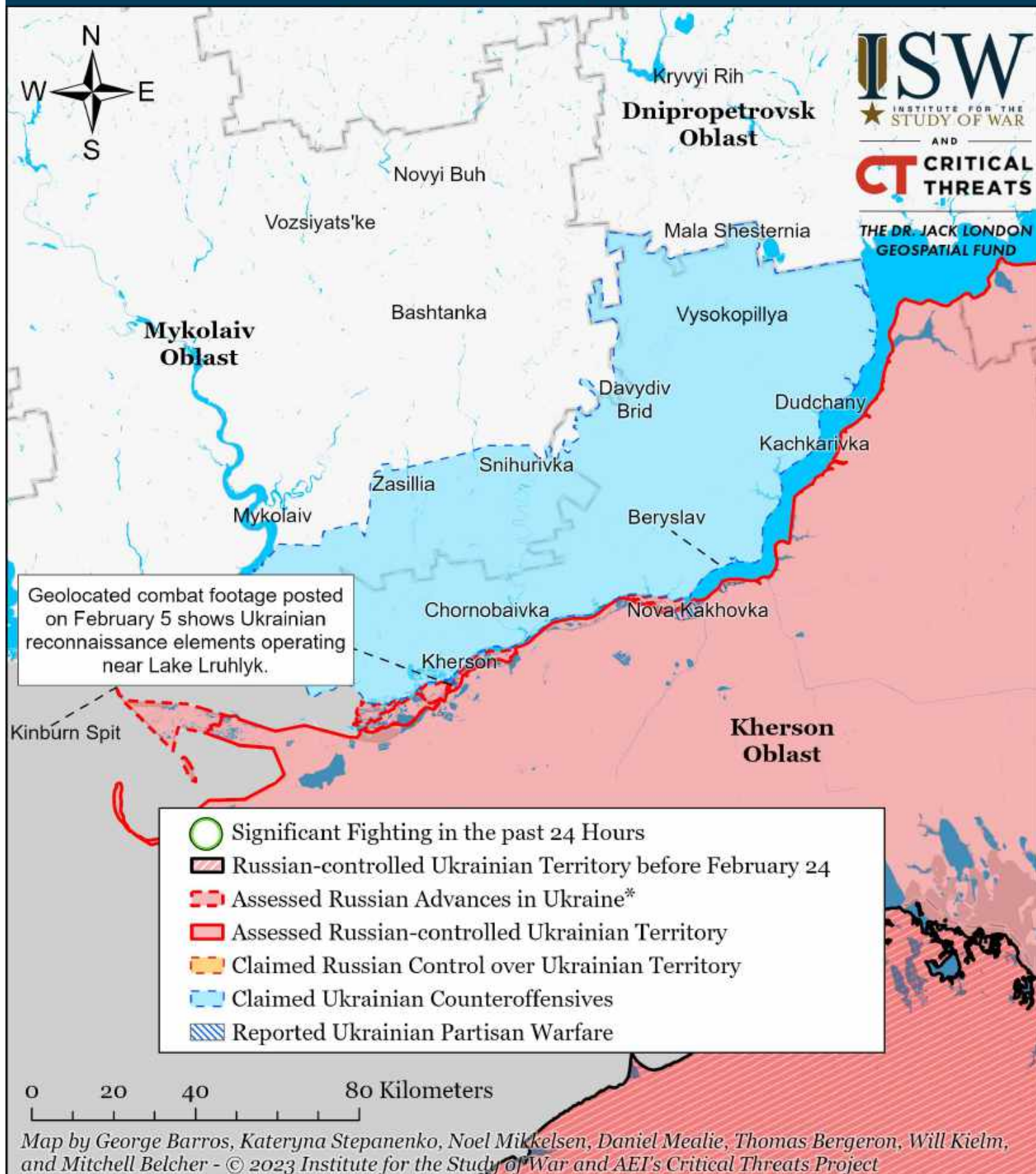
* Assessed Russian advances are areas where ISW assesses Russian forces have operated in or launched attacks against but do not control.

Assessed Control of Terrain Around Kherson and Mykolaiv as of February 16, 2023, 3:00 PM ET



* Assessed Russian advances are areas where ISW assesses Russian forces have operated in or launched attacks against but do not control.

Assessed Control of Terrain Around Kherson and Mykolaiv as of February 15, 2023, 3:00 PM ET



* Assessed Russian advances are areas where ISW assesses Russian forces have operated in or launched attacks against but do not control.

Assessed Control of Terrain Around Kherson and Mykolaiv as of February 14, 2023, 3:00 PM ET

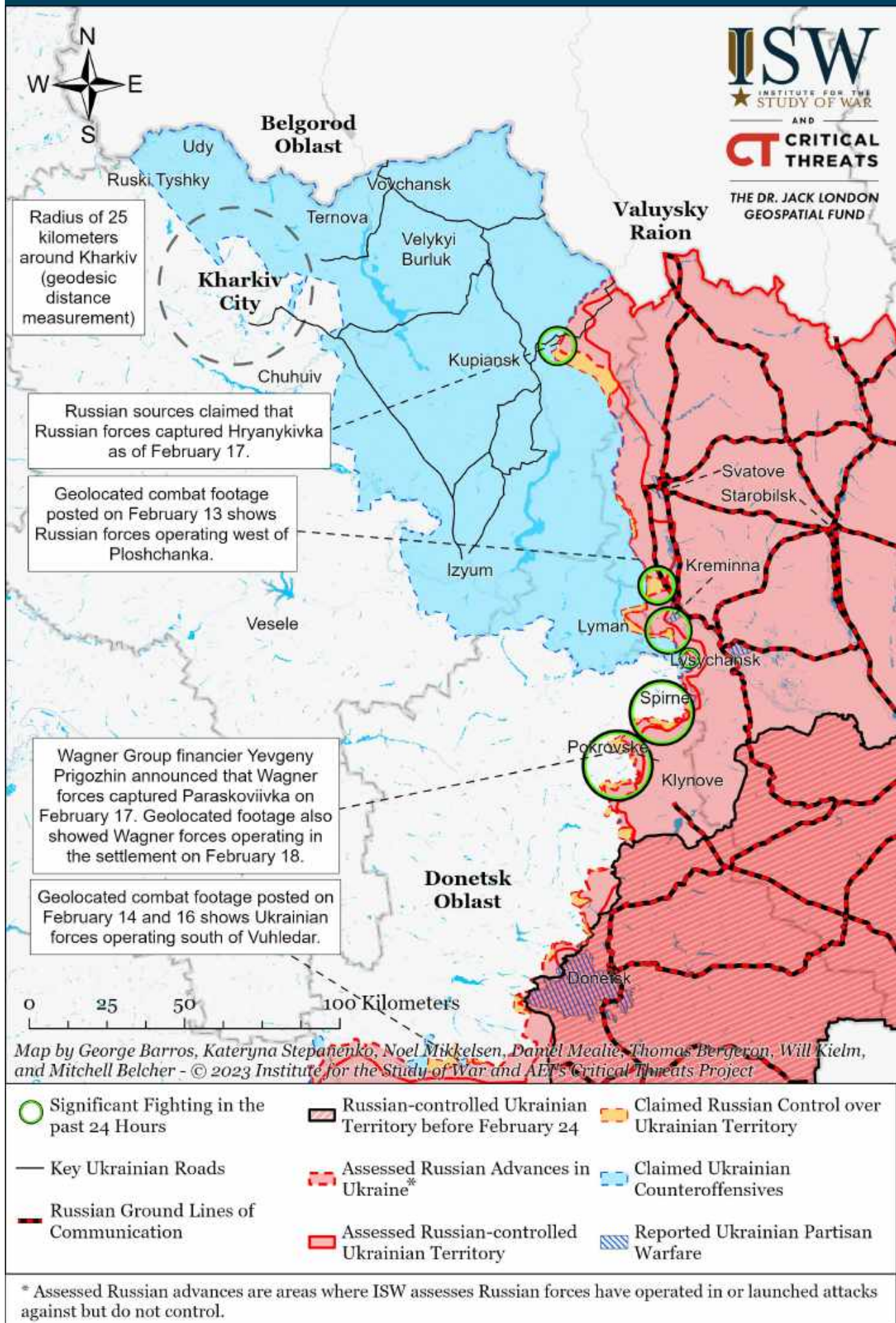


* Assessed Russian advances are areas where ISW assesses Russian forces have operated in or launched attacks against but do not control.

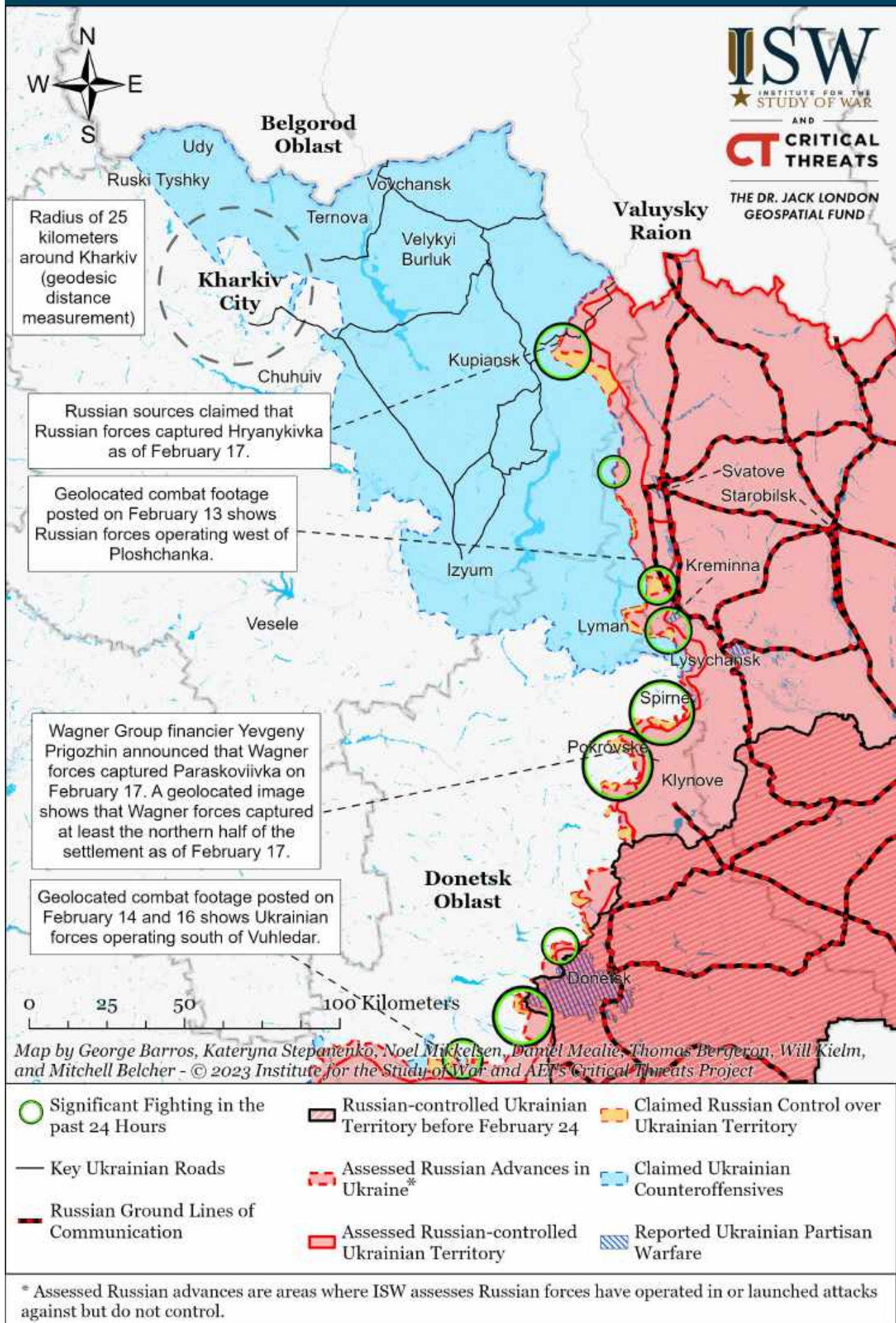
Assessed Control of Terrain Around Kharkiv as of February 20, 2023, 3:00 PM ET



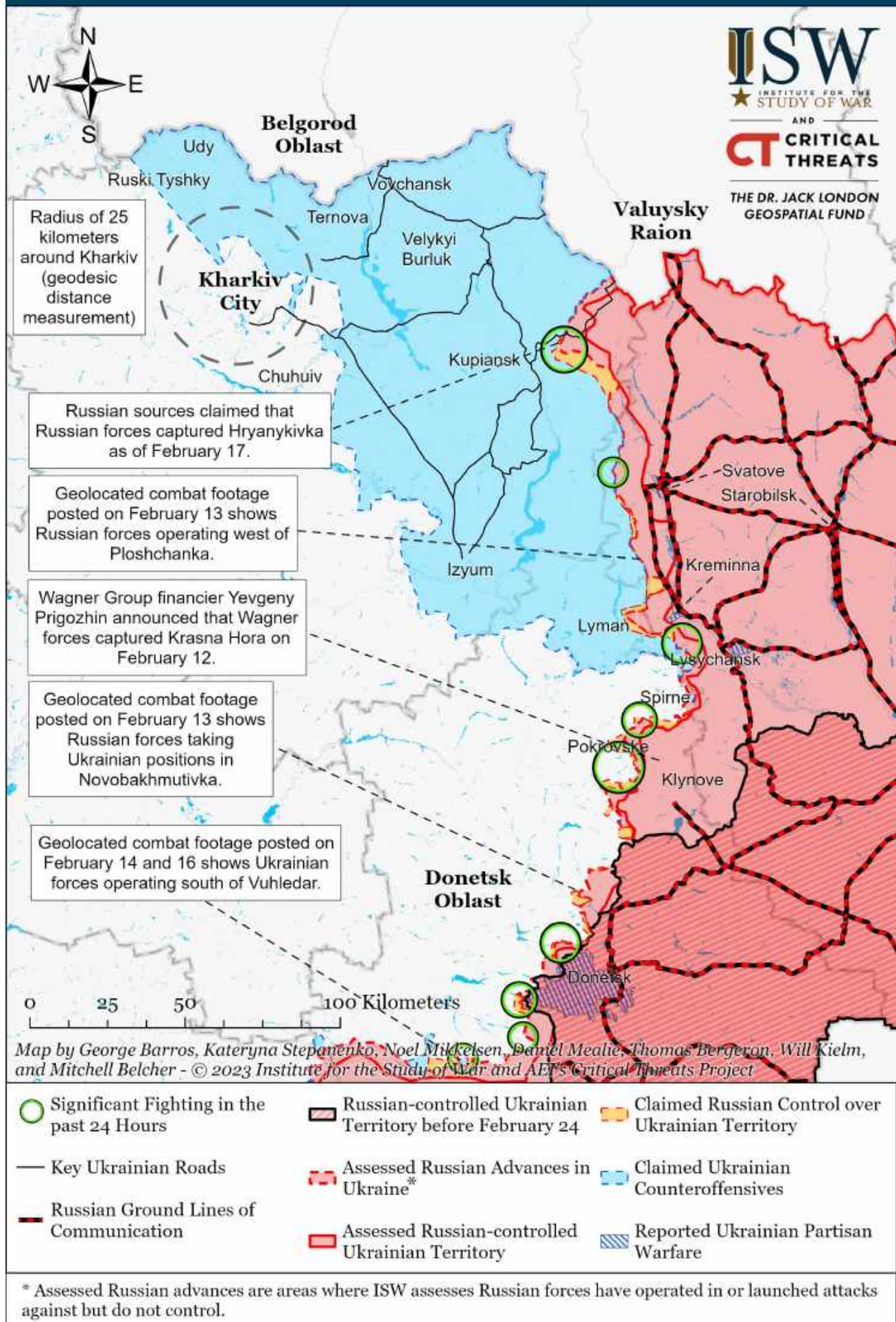
Assessed Control of Terrain Around Kharkiv as of February 19, 2023, 3:00 PM ET



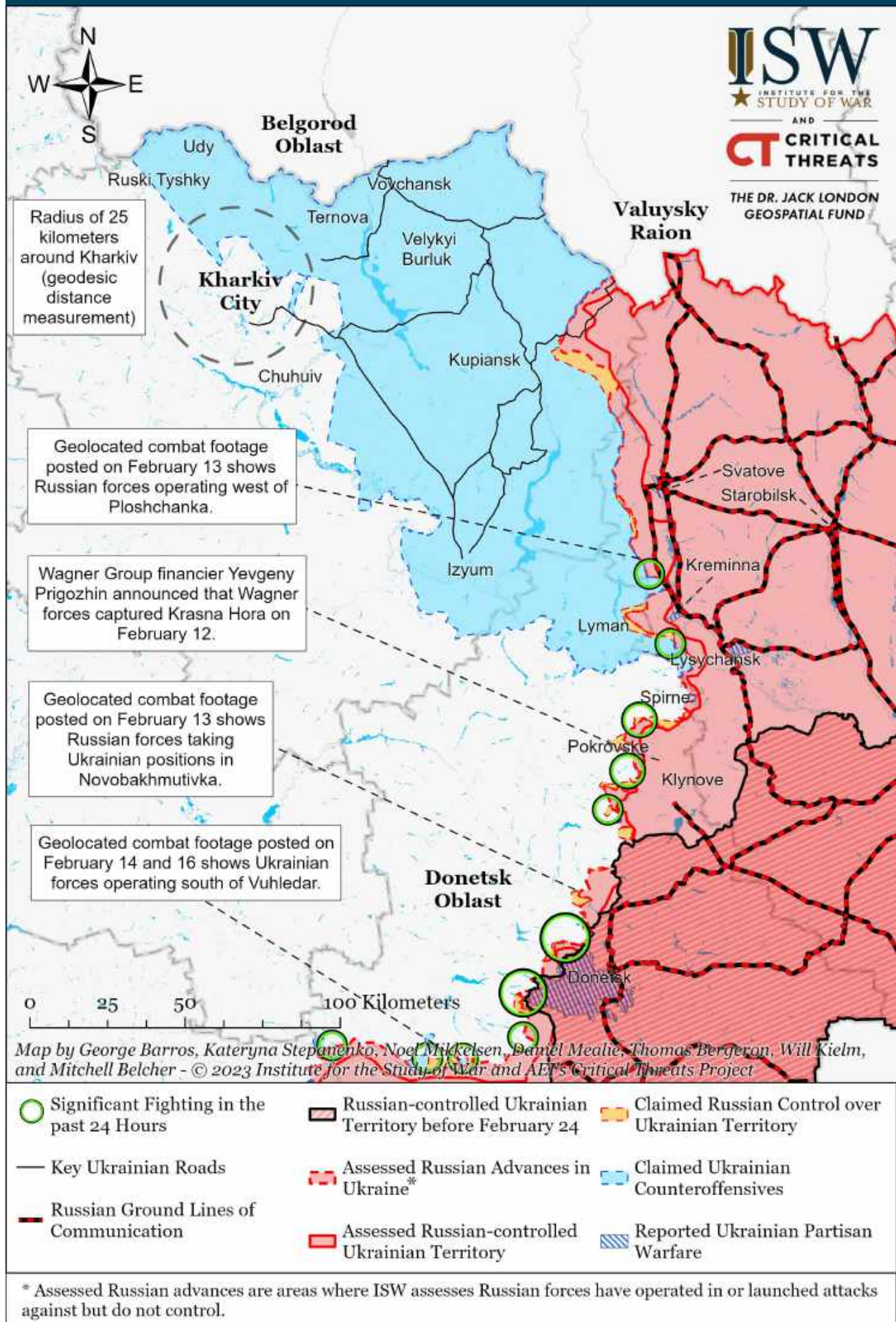
Assessed Control of Terrain Around Kharkiv as of February 18, 2023, 3:00 PM ET



Assessed Control of Terrain Around Kharkiv as of February 17, 2023, 3:00 PM ET



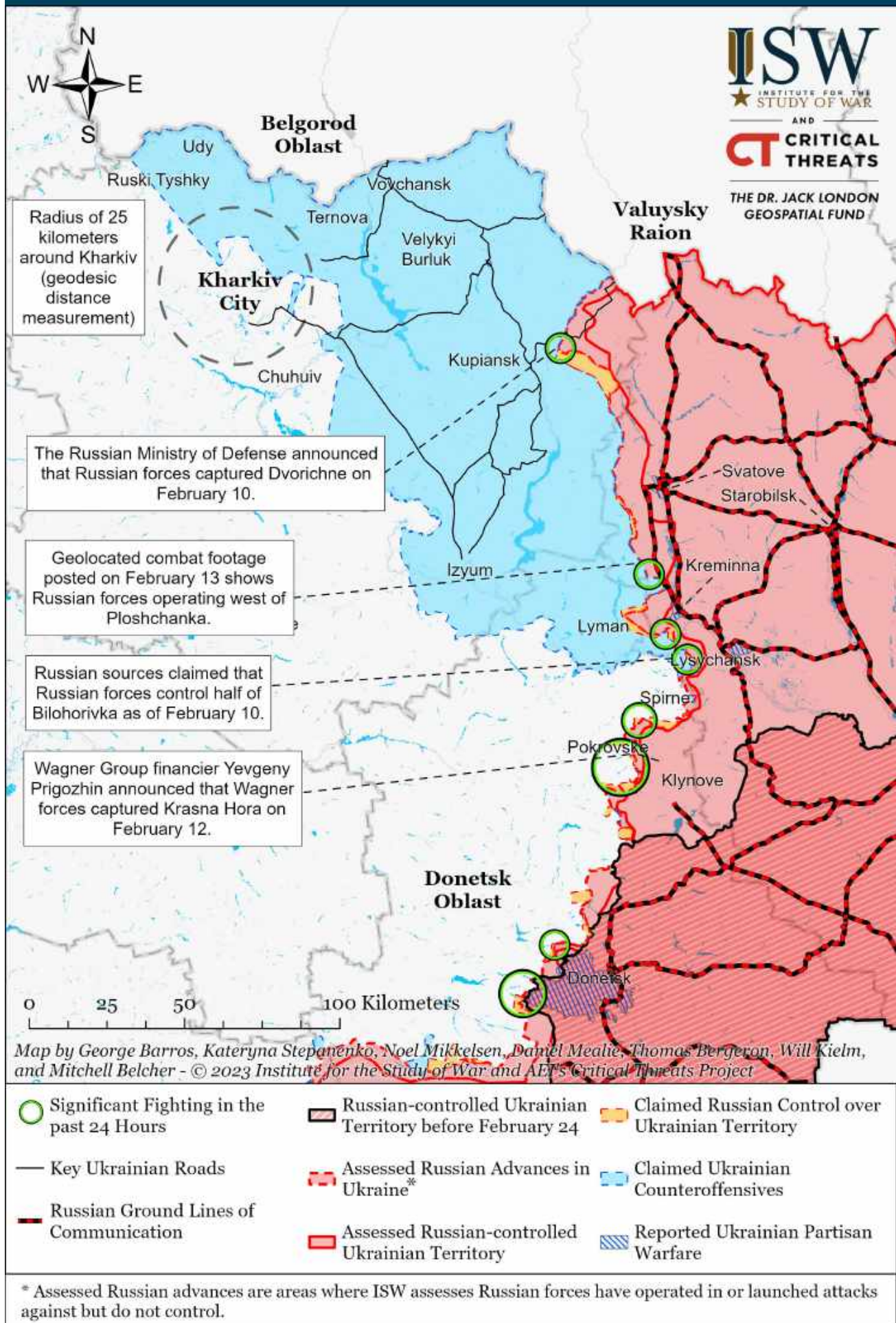
Assessed Control of Terrain Around Kharkiv as of February 16, 2023, 3:00 PM ET



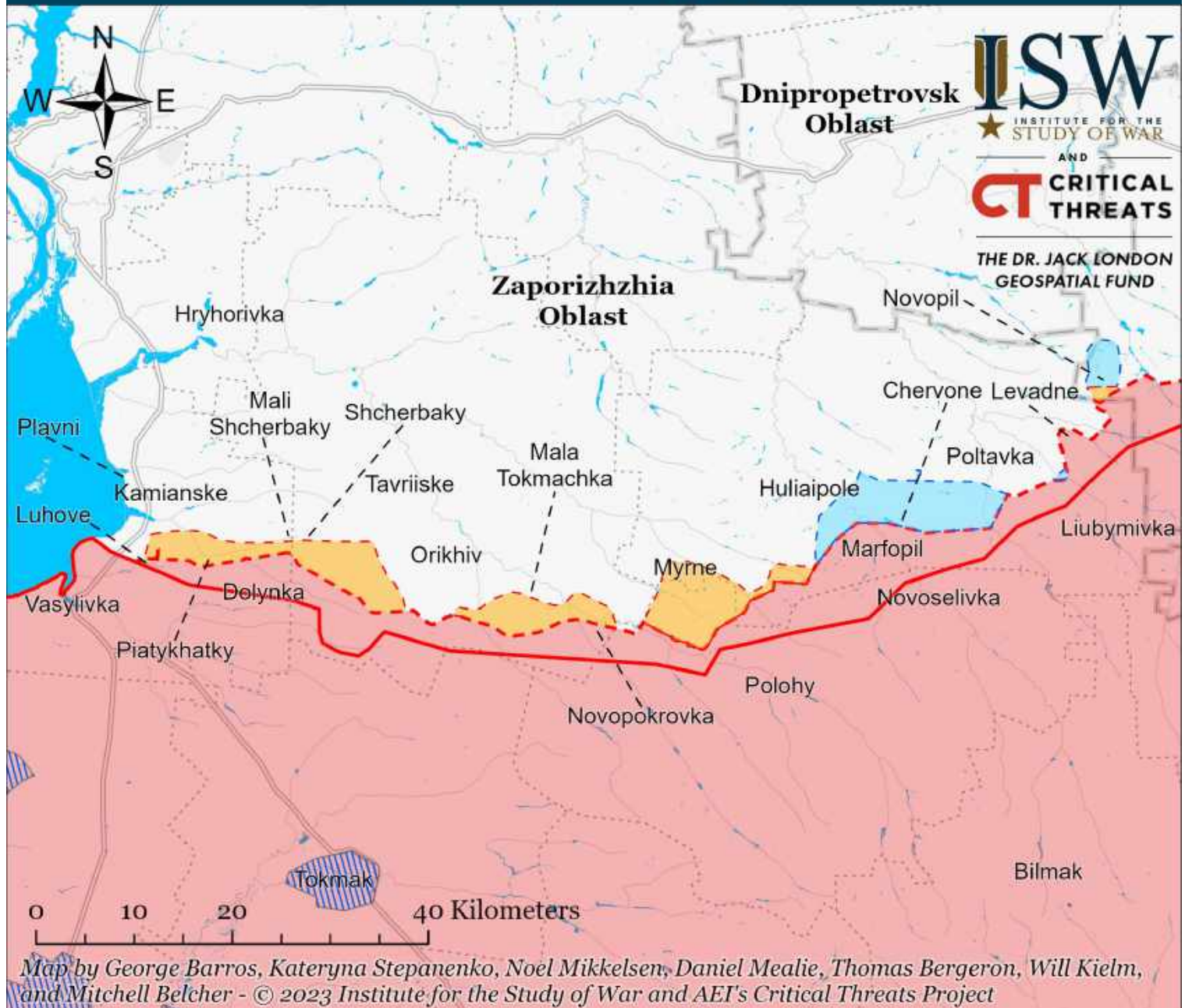
Assessed Control of Terrain Around Kharkiv as of February 15, 2023, 3:00 PM ET



Assessed Control of Terrain Around Kharkiv as of February 14, 2023, 3:00 PM ET



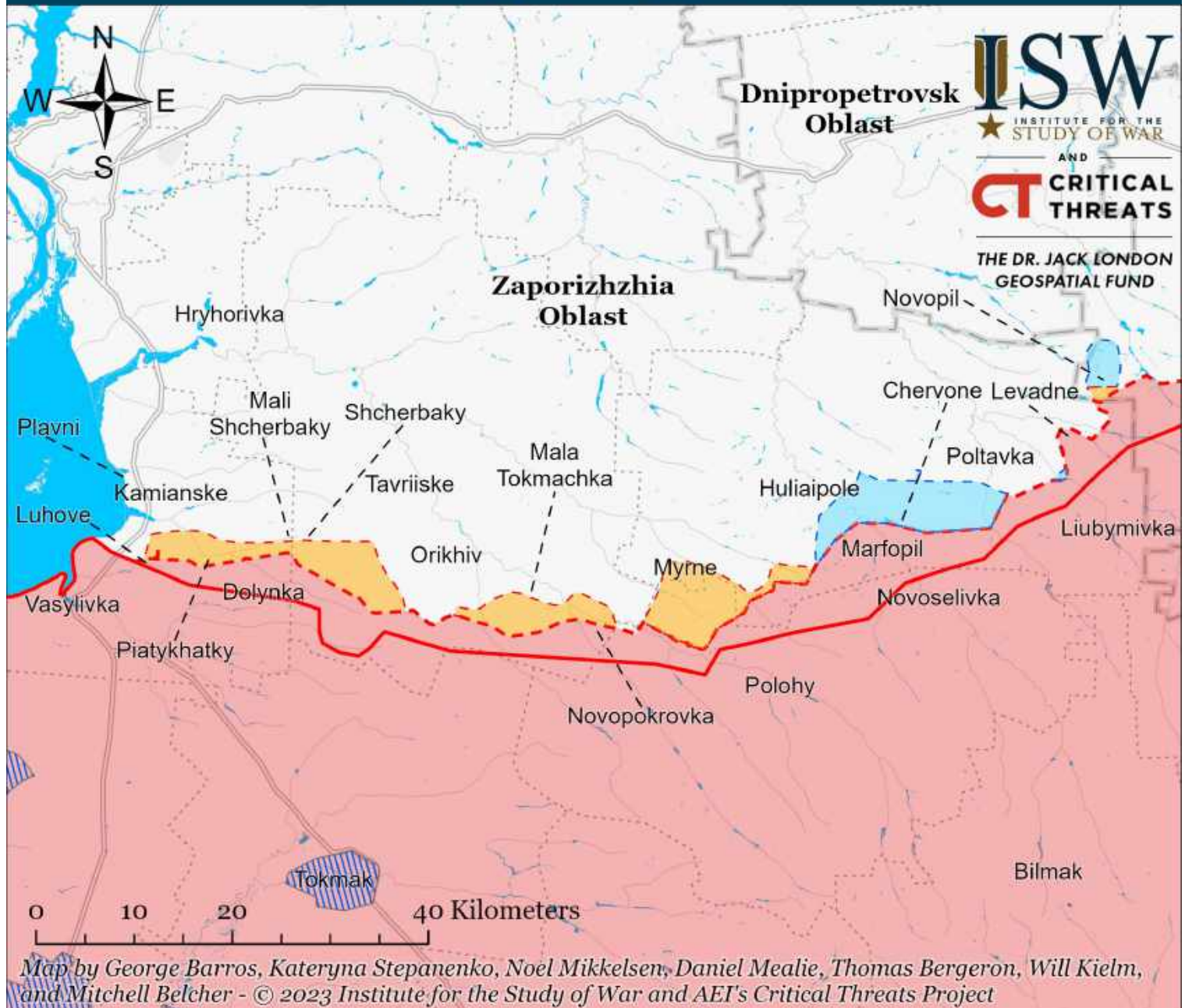
Assessed Control of Terrain Around Zaporizhzhia as of February 20, 2023, 3:00 PM ET



- | | | |
|---|---|--|
| Significant Fighting in the past 24 Hours | Russian-controlled Ukrainian Territory before February 24 | Claimed Russian Control over Ukrainian Territory |
| Key Ukrainian Roads | Assessed Russian Advances in Ukraine | Claimed Ukrainian Counteroffensives |
| Russian Ground Lines of Communication * | Assessed Russian-controlled Ukrainian Territory | Reported Ukrainian Partisan Warfare |

* Assessed Russian advances are areas where ISW assesses Russian forces have operated in or launched attacks against but do not control.

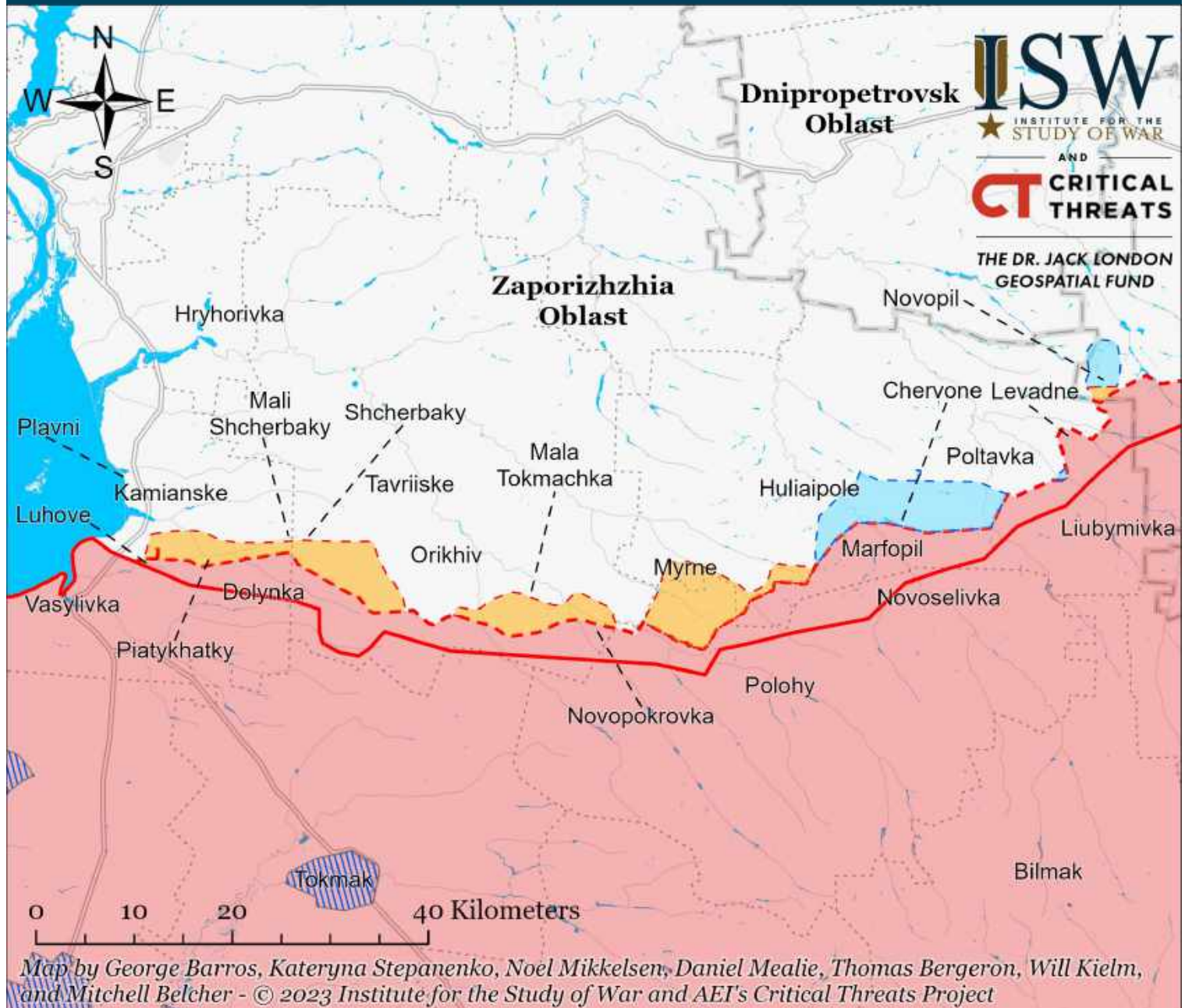
Assessed Control of Terrain Around Zaporizhzhia as of February 19, 2023, 3:00 PM ET



- Significant Fighting in the past 24 Hours
- Assessed Russian-controlled Ukrainian Territory
- ▨ Reported Ukrainian Partisan Warfare
- Russian-controlled Ukrainian Territory before February 24
- Claimed Russian Control over Ukrainian Territory
- - - Assessed Russian Advances in Ukraine*
- Claimed Ukrainian Counteroffensives

* Assessed Russian advances are areas where ISW assesses Russian forces have operated in or launched attacks against but do not control.

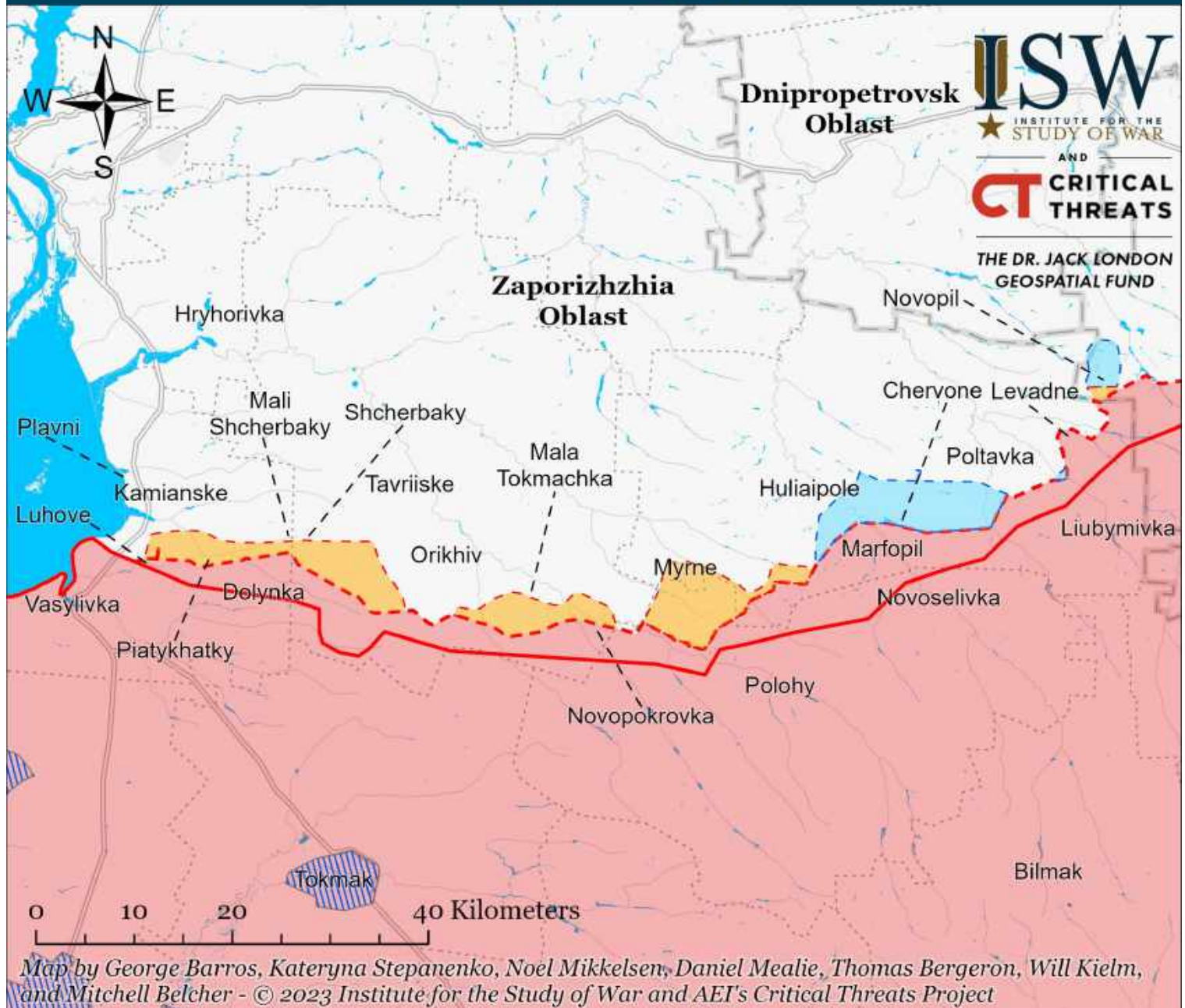
Assessed Control of Terrain Around Zaporizhzhia as of February 18, 2023, 3:00 PM ET



- Significant Fighting in the past 24 Hours
- Assessed Russian-controlled Ukrainian Territory
- Reported Ukrainian Partisan Warfare
- Russian-controlled Ukrainian Territory before February 24
- Claimed Russian Control over Ukrainian Territory
- Claimed Ukrainian Counteroffensives
- Assessed Russian Advances in Ukraine*

* Assessed Russian advances are areas where ISW assesses Russian forces have operated in or launched attacks against but do not control.

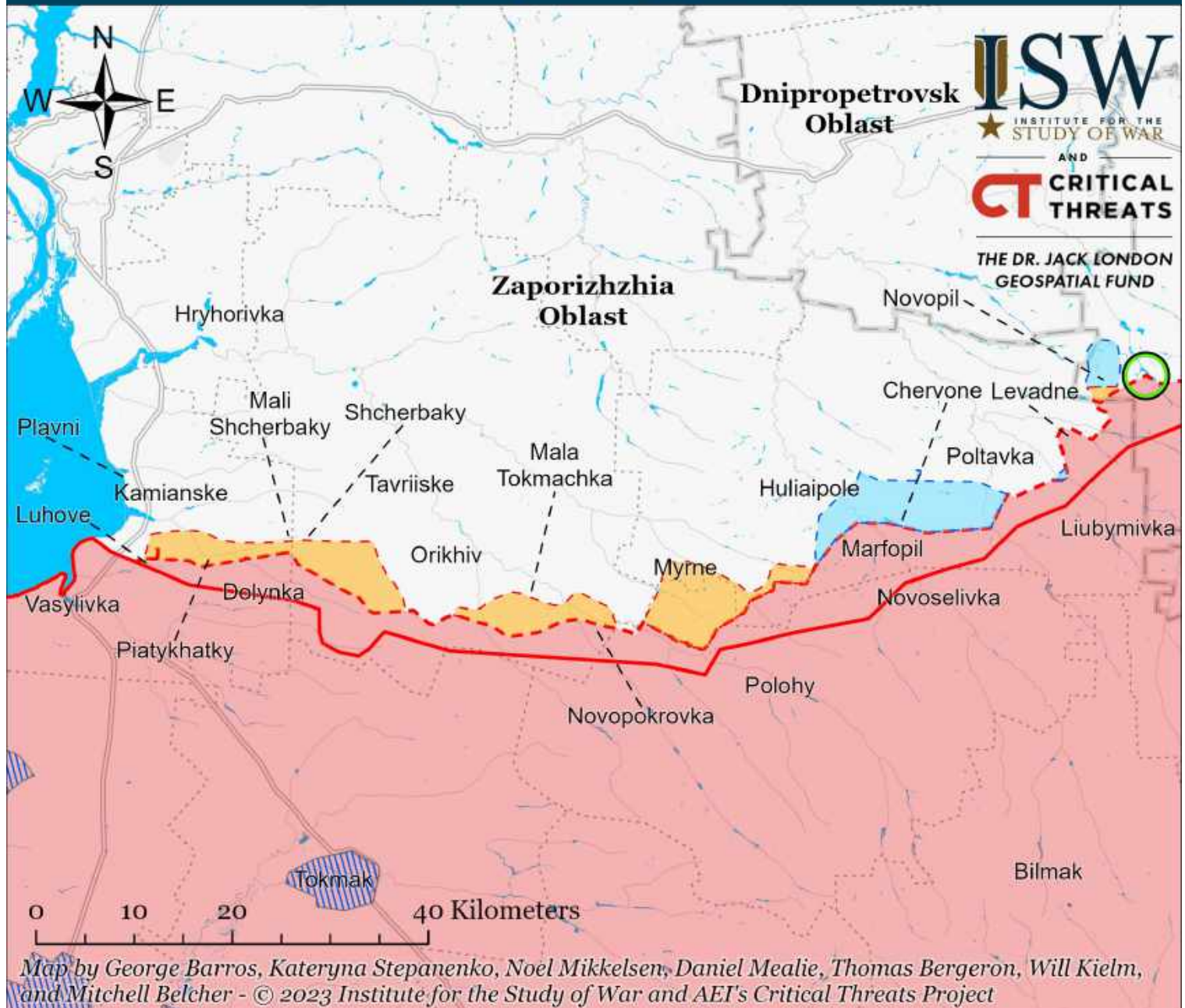
Assessed Control of Terrain Around Zaporizhzhia as of February 17, 2023, 3:00 PM ET



- Significant Fighting in the past 24 Hours
- Assessed Russian-controlled Ukrainian Territory
- Reported Ukrainian Partisan Warfare
- Russian-controlled Ukrainian Territory before February 24
- Claimed Russian Control over Ukrainian Territory
- Assessed Russian Advances in Ukraine*
- Claimed Ukrainian Counteroffensives

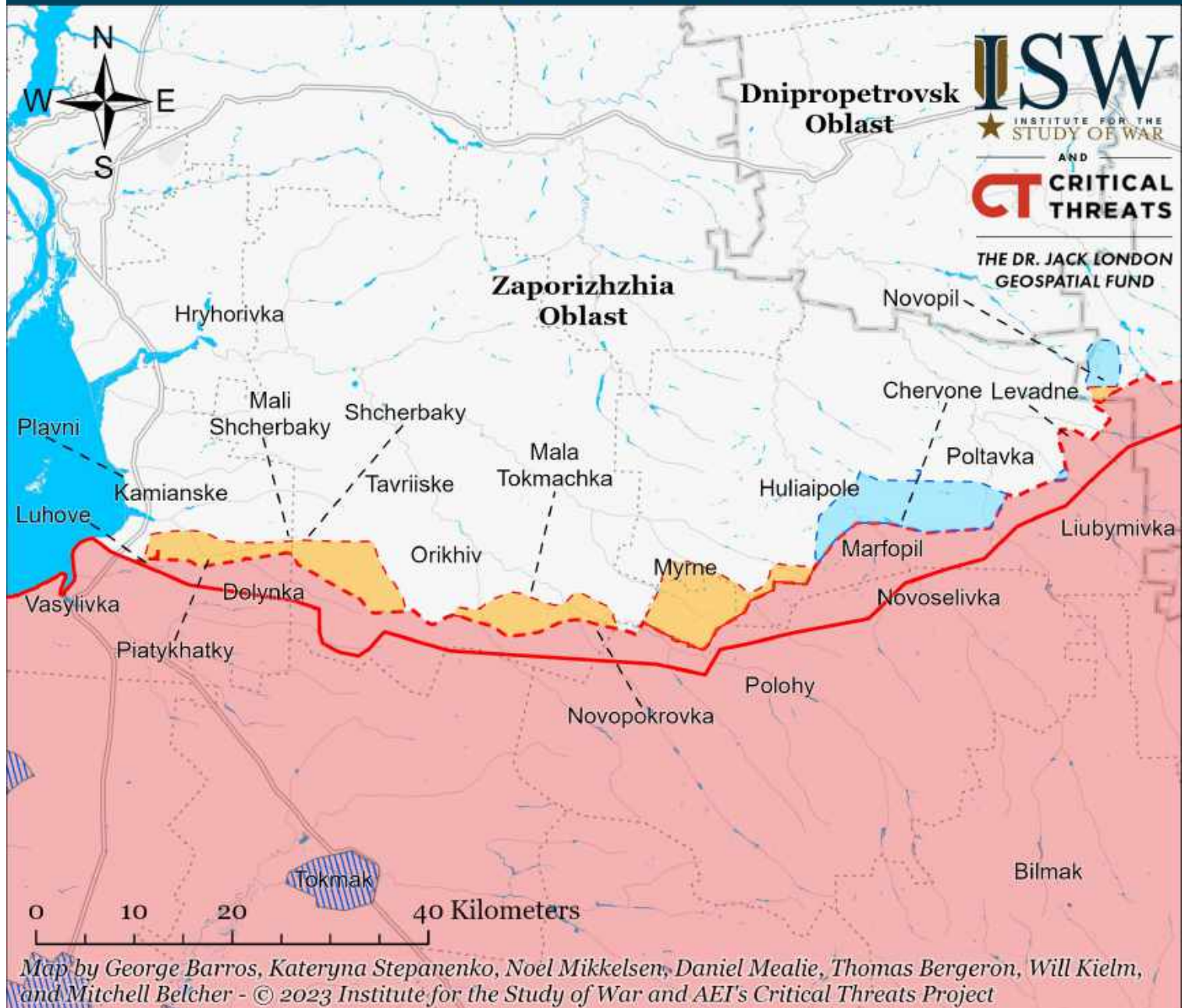
* Assessed Russian advances are areas where ISW assesses Russian forces have operated in or launched attacks against but do not control.

Assessed Control of Terrain Around Zaporizhzhia as of February 16, 2023, 3:00 PM ET



* Assessed Russian advances are areas where ISW assesses Russian forces have operated in or launched attacks against but do not control.

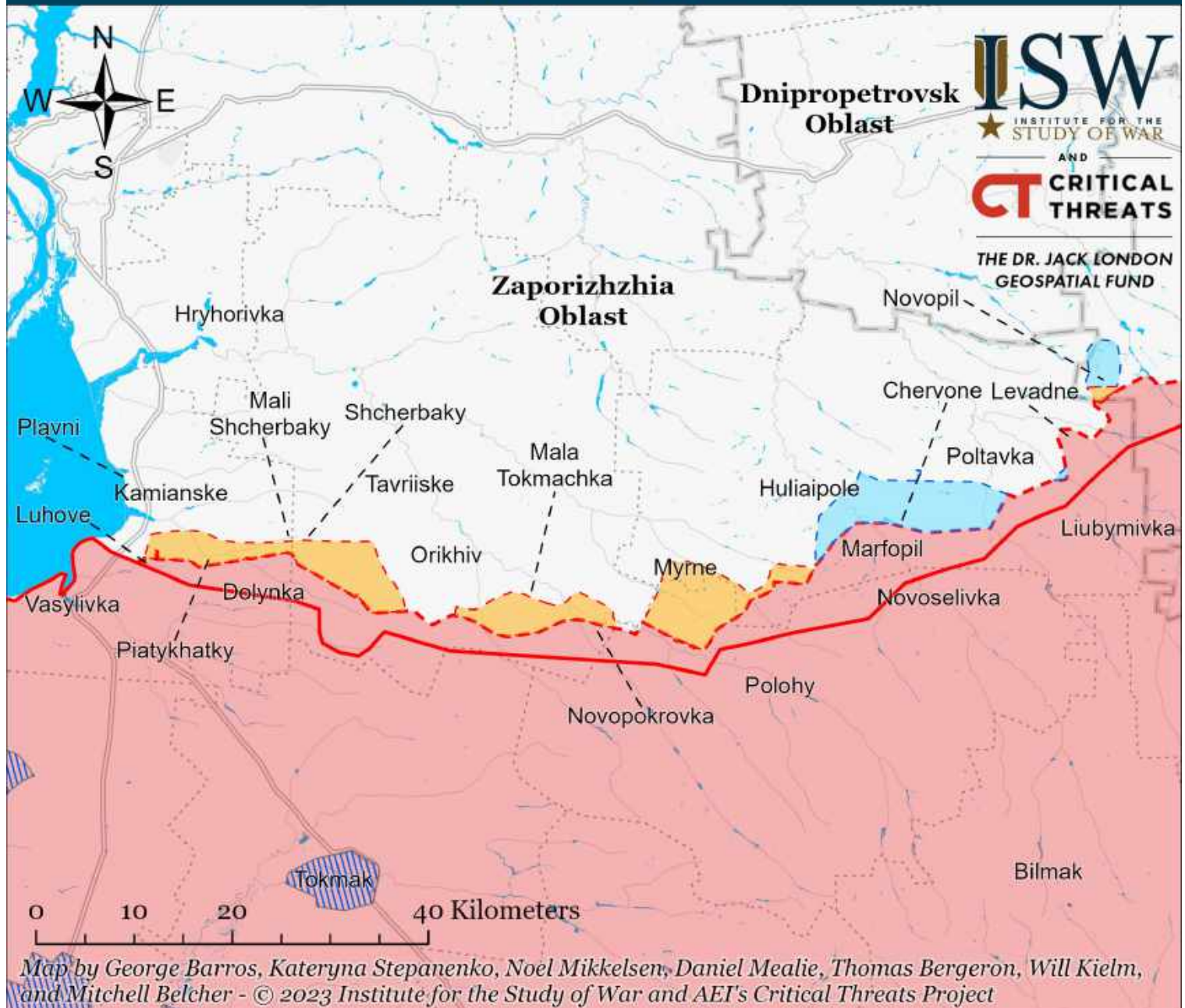
Assessed Control of Terrain Around Zaporizhzhia as of February 15, 2023, 3:00 PM ET



- Significant Fighting in the past 24 Hours
- Assessed Russian-controlled Ukrainian Territory
- Reported Ukrainian Partisan Warfare
- Russian-controlled Ukrainian Territory before February 24
- Claimed Russian Control over Ukrainian Territory
- Assessed Russian Advances in Ukraine*
- Claimed Ukrainian Counteroffensives

* Assessed Russian advances are areas where ISW assesses Russian forces have operated in or launched attacks against but do not control.

Assessed Control of Terrain Around Zaporizhzhia as of February 14, 2023, 3:00 PM ET



- Significant Fighting in the past 24 Hours
- Assessed Russian-controlled Ukrainian Territory
- ▨ Reported Ukrainian Partisan Warfare
- Russian-controlled Ukrainian Territory before February 24
- Claimed Russian Control over Ukrainian Territory
- - - Assessed Russian Advances in Ukraine*
- Claimed Ukrainian Counteroffensives

* Assessed Russian advances are areas where ISW assesses Russian forces have operated in or launched attacks against but do not control.

Assessed Russian Order of Battle in Luhansk Oblast as of February 19, 2023



THE DR. JACK LONDON
GEOSPATIAL FUND



Note: This map shows notional approximations of Russian unit locations based on Russian and Ukrainian reporting. This map does not show the full extent of Russian units deployed along the frontline.

Kharkiv Oblast

Kharkiv Oblast

Luhansk Oblast



Unspecified elements of the 2nd Motorized Rifle Division (1st Guards Tank Army) deployed to Luhansk Oblast from Belarus in late January 2023. These elements' whereabouts are unknown as of February 19, 2023.

Luhansk Oblast

Donetsk Oblast

Luhansk Oblast

Donetsk Oblast

- Russian Defensive Fortifications (trenches, fortifications, revetments, tank traps, etc.)
- Assessed Russian Advances
- Assessed Russian-controlled Ukrainian Territory
- Claimed Russian Control over Ukrainian Territory
- Claimed Ukrainian Counteroffensives
- Ukrainian Oblast Boundaries

0 10 20 40 Kilometers

Map by George Barros
Data acquired from satellite imagery and other open sources
© 2023 Institute for the Study of War