

Assessed Control of Terrain in Ukraine and Main Russian Maneuver Axes as of March 13, 2023, 3:00 PM ET



Map by George Barros, Kateryna Stepanenko, Noel Mikkelsen, Daniel Mealie, Thomas Bergeron, Will Kielm, and Mitchell Belcher - © 2023 Institute for the Study of War and AEI's Critical Threats Project

* Assessed Russian advances are areas where ISW assesses Russian forces have operated in or launched attacks against but do not control.

Assessed Control of Terrain in Ukraine and Main Russian Maneuver Axes as of March 12, 2023, 3:00 PM ET



Map by George Barros, Kateryna Stepanenko, Noel Mikkelsen, Daniel Mealie, Thomas Bergeron, Will Kielm, and Mitchell Belcher - © 2023 Institute for the Study of War and AEI's Critical Threats Project

* Assessed Russian advances are areas where ISW assesses Russian forces have operated in or launched attacks against but do not control.

Assessed Control of Terrain in Ukraine and Main Russian Maneuver Axes as of March 11, 2023, 3:00 PM ET



Map by George Barros, Kateryna Stepanenko, Noel Mikkelsen, Daniel Mealie, Thomas Bergeron, Will Kielm, and Mitchell Belcher - © 2023 Institute for the Study of War and AEI's Critical Threats Project

* Assessed Russian advances are areas where ISW assesses Russian forces have operated in or launched attacks against but do not control.

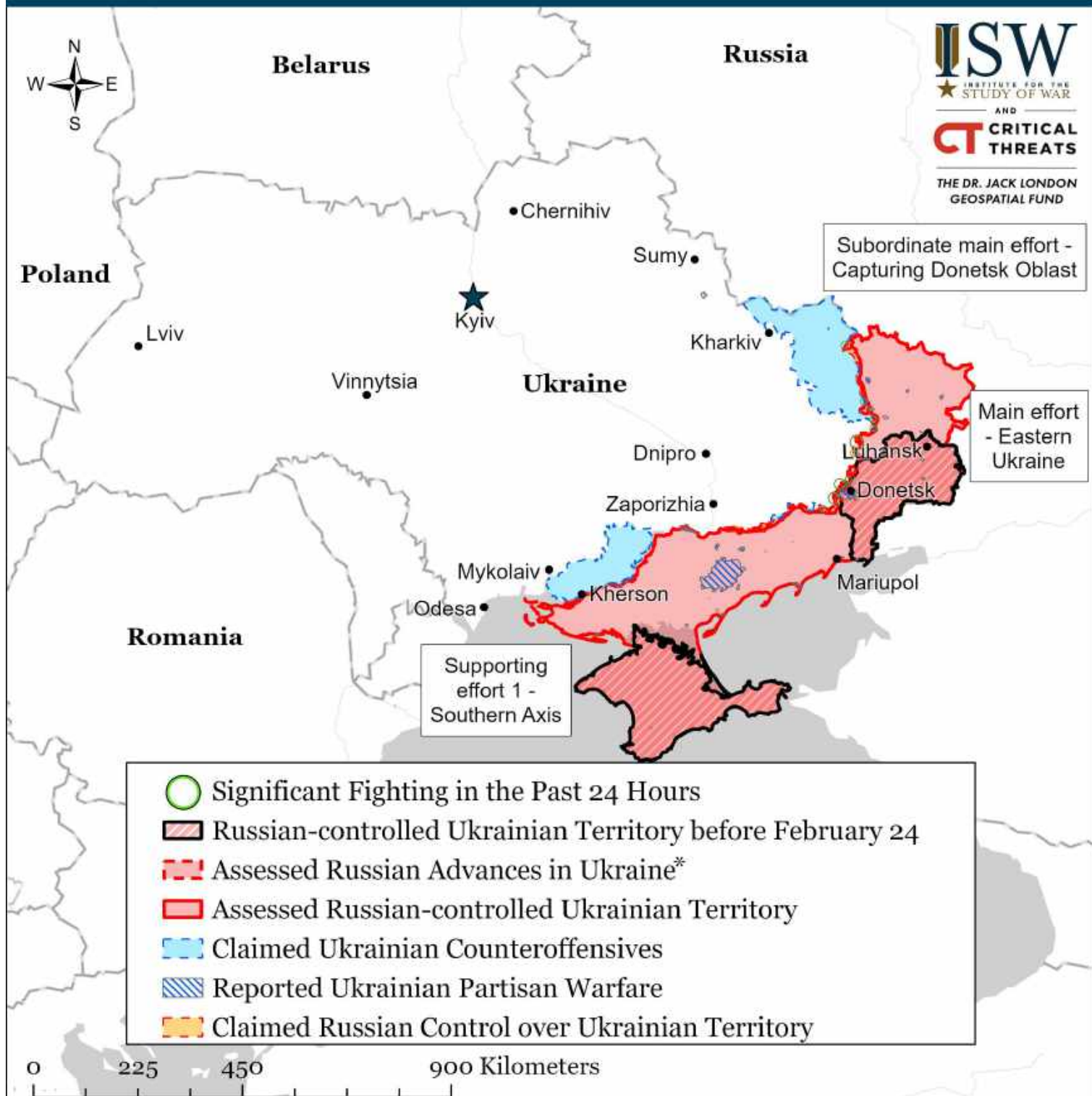
Assessed Control of Terrain in Ukraine and Main Russian Maneuver Axes as of March 10, 2023, 3:00 PM ET



Map by George Barros, Kateryna Stepanenko, Noel Mikkelsen, Daniel Mealie, Thomas Bergeron, Will Kielm, and Mitchell Belcher - © 2023 Institute for the Study of War and AEI's Critical Threats Project

* Assessed Russian advances are areas where ISW assesses Russian forces have operated in or launched attacks against but do not control.

Assessed Control of Terrain in Ukraine and Main Russian Maneuver Axes as of March 9, 2023, 3:00 PM ET



Map by George Barros, Kateryna Stepanenko, Noel Mikkelsen, Daniel Mealie, Thomas Bergeron, Will Kielm, and Mitchell Belcher - © 2023 Institute for the Study of War and AEI's Critical Threats Project

* Assessed Russian advances are areas where ISW assesses Russian forces have operated in or launched attacks against but do not control.

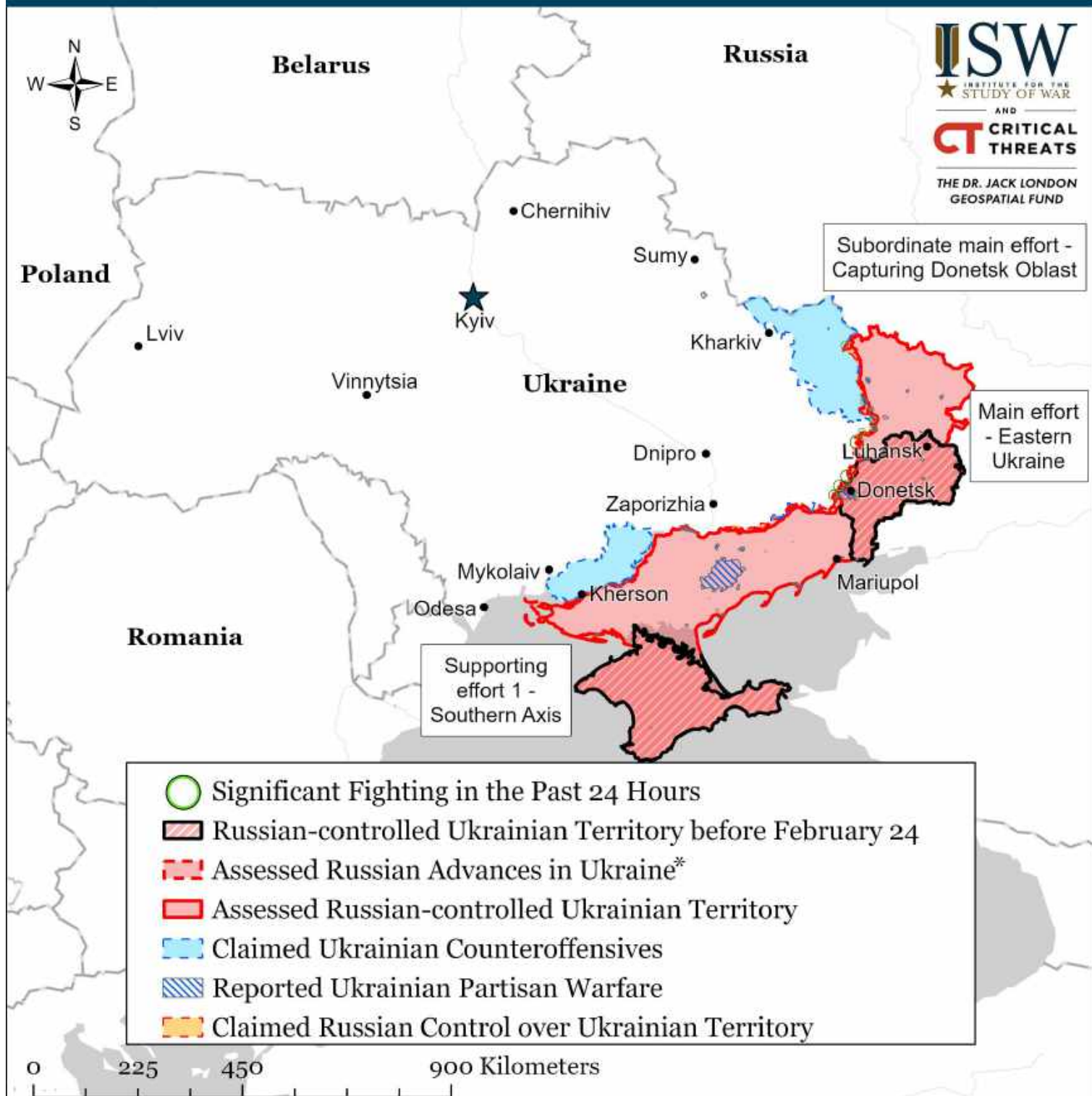
Assessed Control of Terrain in Ukraine and Main Russian Maneuver Axes as of March 8, 2023, 3:00 PM ET



Map by George Barros, Kateryna Stepanenko, Noel Mikkelsen, Daniel Mealie, Thomas Bergeron, Will Kielm, and Mitchell Belcher - © 2023 Institute for the Study of War and AEI's Critical Threats Project

* Assessed Russian advances are areas where ISW assesses Russian forces have operated in or launched attacks against but do not control.

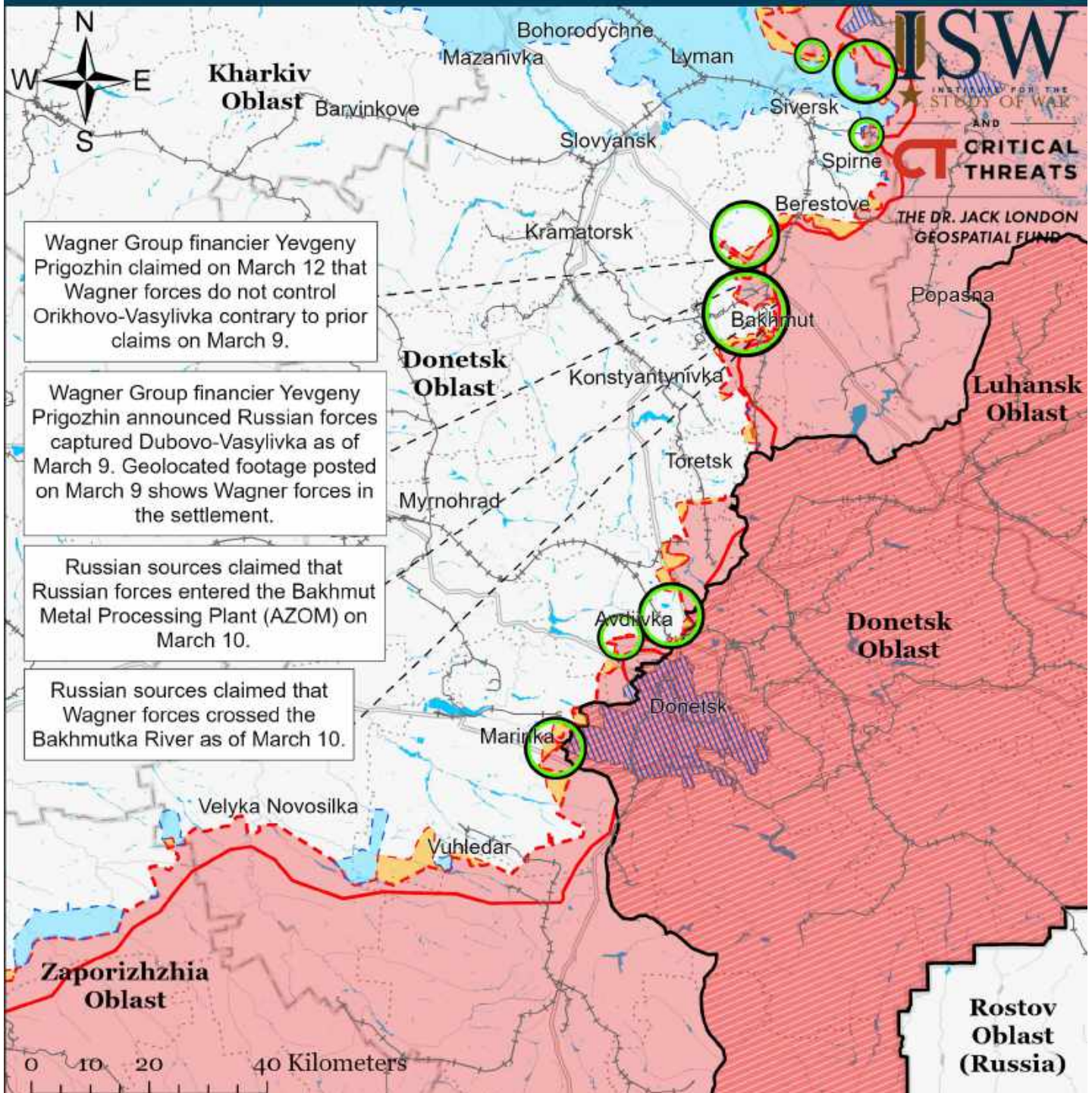
Assessed Control of Terrain in Ukraine and Main Russian Maneuver Axes as of March 7, 2023, 3:00 PM ET



Map by George Barros, Kateryna Stepanenko, Noel Mikkelsen, Daniel Mealie, Thomas Bergeron, Will Kielm, and Mitchell Belcher - © 2023 Institute for the Study of War and AEI's Critical Threats Project

* Assessed Russian advances are areas where ISW assesses Russian forces have operated in or launched attacks against but do not control.

Assessed Control of Terrain Around Donetsk as of March 13, 2023, 3:00 PM ET

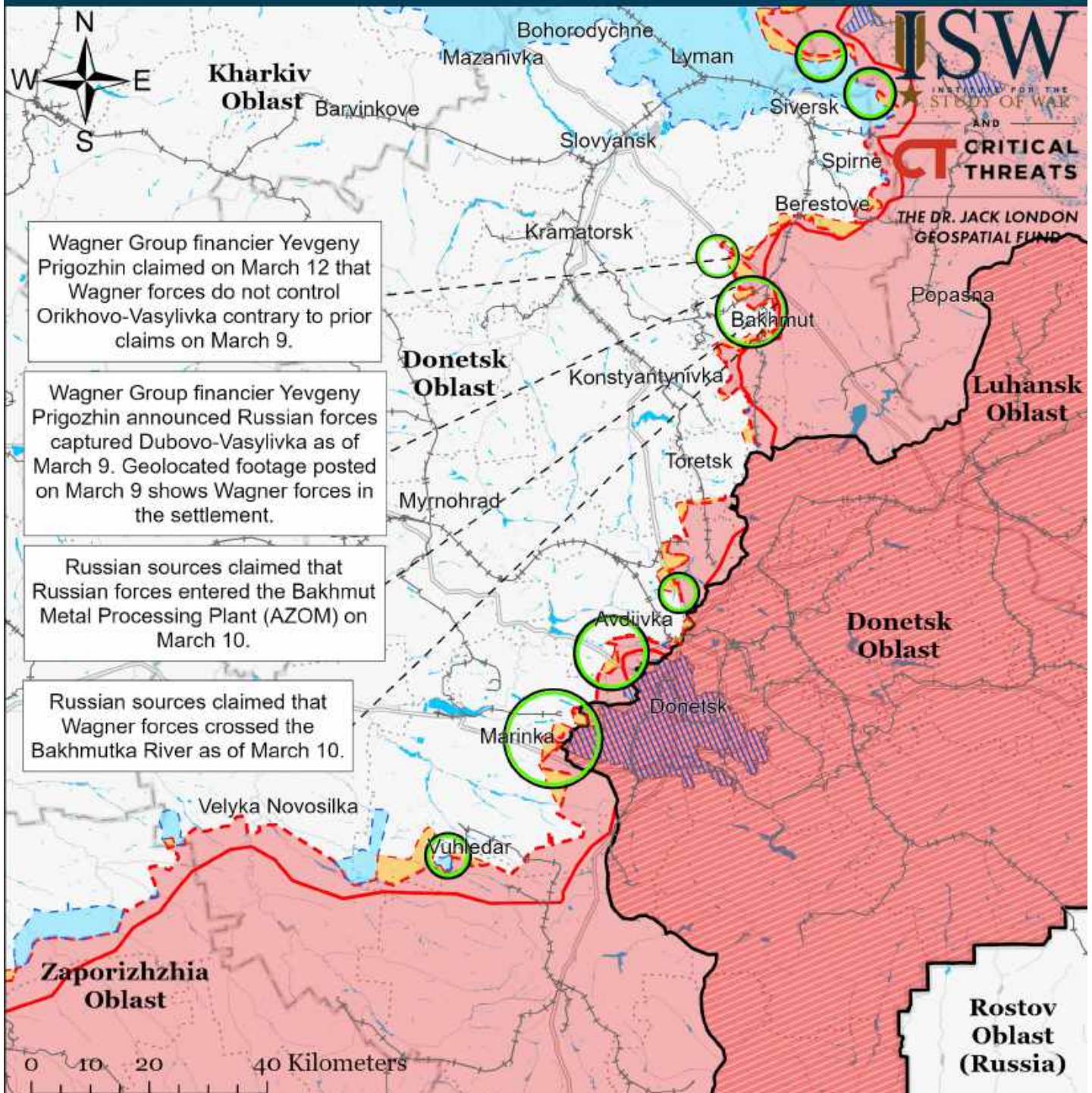


Map by George Barros, Kateryna Stepanenko, Noel Mikkelsen, Daniel Mealie, Thomas Bergeron, Will Kiern, and Mitchell Belcher - © 2023 Institute for the Study of War and AEI's Critical Threats Project

- Significant Fighting in the past 24 Hours
- Russian-controlled Ukrainian Territory before February 24
- Assessed Russian Advances in Ukraine*
- Assessed Russian-controlled Ukrainian Territory
- Claimed Russian Control over Ukrainian Territory
- Claimed Ukrainian Counteroffensives
- +— Major Railroads
- Reported Ukrainian Partisan Warfare

* Assessed Russian advances are areas where ISW assesses Russian forces have operated in or launched attacks against but do not control.

Assessed Control of Terrain Around Donetsk as of March 12, 2023, 3:00 PM ET

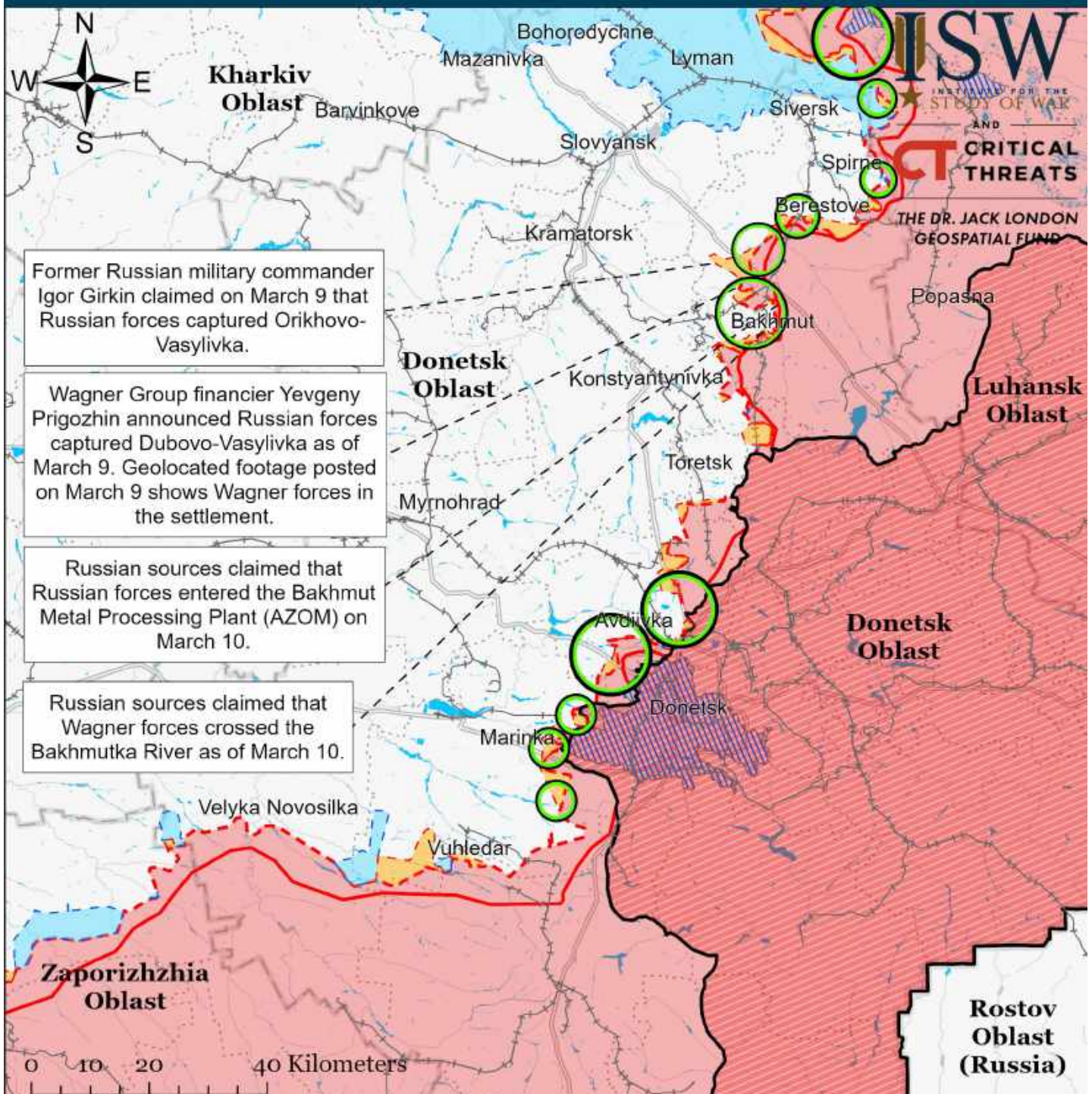


Map by George Barros, Kateryna Stepanenko, Noel Mikkelsen, Daniel Mealie, Thomas Bergeron, Will Kiern, and Mitchell Belcher - © 2023 Institute for the Study of War and AEI's Critical Threats Project

- | | | |
|---|--|-------------------------------------|
| Significant Fighting in the past 24 Hours | Assessed Russian-controlled Ukrainian Territory | Major Railroads |
| Russian-controlled Ukrainian Territory before February 24 | Claimed Russian Control over Ukrainian Territory | Reported Ukrainian Partisan Warfare |
| Assessed Russian Advances in Ukraine* | Claimed Ukrainian Counteroffensives | |

* Assessed Russian advances are areas where ISW assesses Russian forces have operated in or launched attacks against but do not control.

Assessed Control of Terrain Around Donetsk as of March 11, 2023, 3:00 PM ET

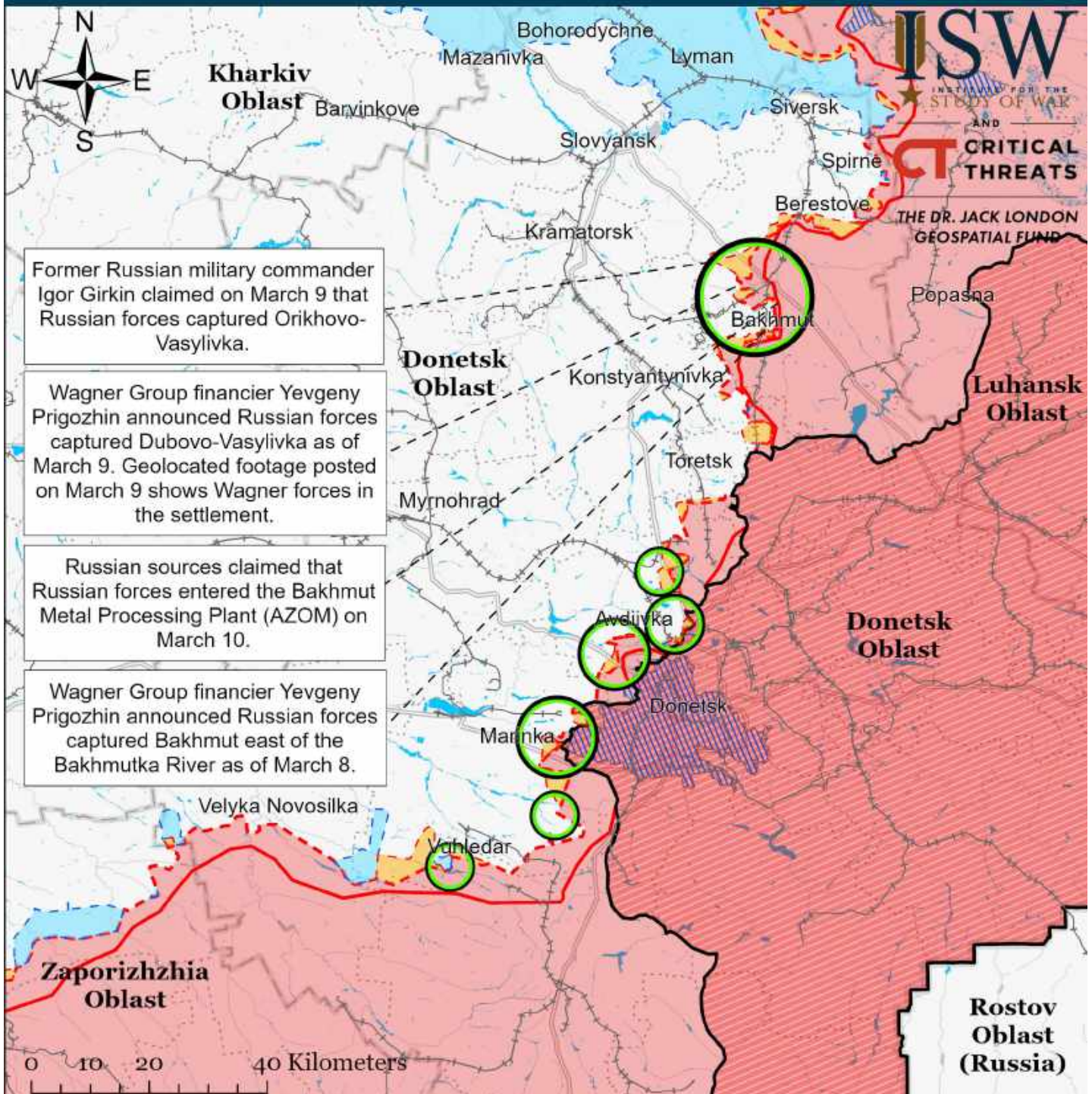


Map by George Barros, Kateryna Stepanenko, Noel Mikkelsen, Daniel Mealie, Thomas Bergeron, Will Kiern, and Mitchell Belcher - © 2023 Institute for the Study of War and AEI's Critical Threats Project

- Significant Fighting in the past 24 Hours
- Russian-controlled Ukrainian Territory before February 24
- Assessed Russian Advances in Ukraine*
- Assessed Russian-controlled Ukrainian Territory
- Claimed Russian Control over Ukrainian Territory
- Claimed Ukrainian Counteroffensives
- Major Railroads
- Reported Ukrainian Partisan Warfare

* Assessed Russian advances are areas where ISW assesses Russian forces have operated in or launched attacks against but do not control.

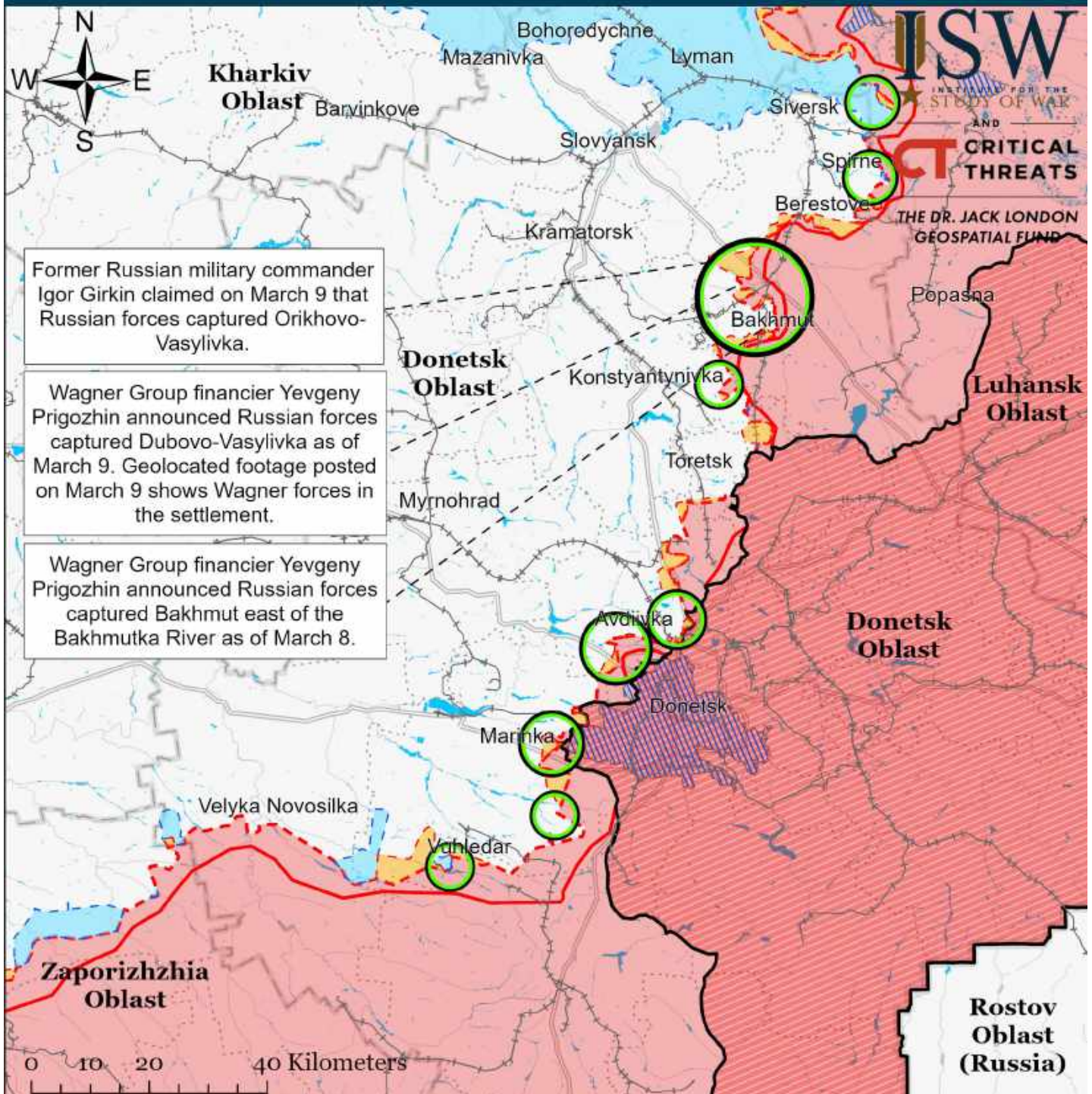
Assessed Control of Terrain Around Donetsk as of March 10, 2023, 3:00 PM ET



- Significant Fighting in the past 24 Hours
- Russian-controlled Ukrainian Territory before February 24
- Assessed Russian Advances in Ukraine*
- Assessed Russian-controlled Ukrainian Territory
- Claimed Russian Control over Ukrainian Territory
- Claimed Ukrainian Counteroffensives
- +— Major Railroads
- Reported Ukrainian Partisan Warfare

* Assessed Russian advances are areas where ISW assesses Russian forces have operated in or launched attacks against but do not control.

Assessed Control of Terrain Around Donetsk as of March 9, 2023, 3:00 PM ET

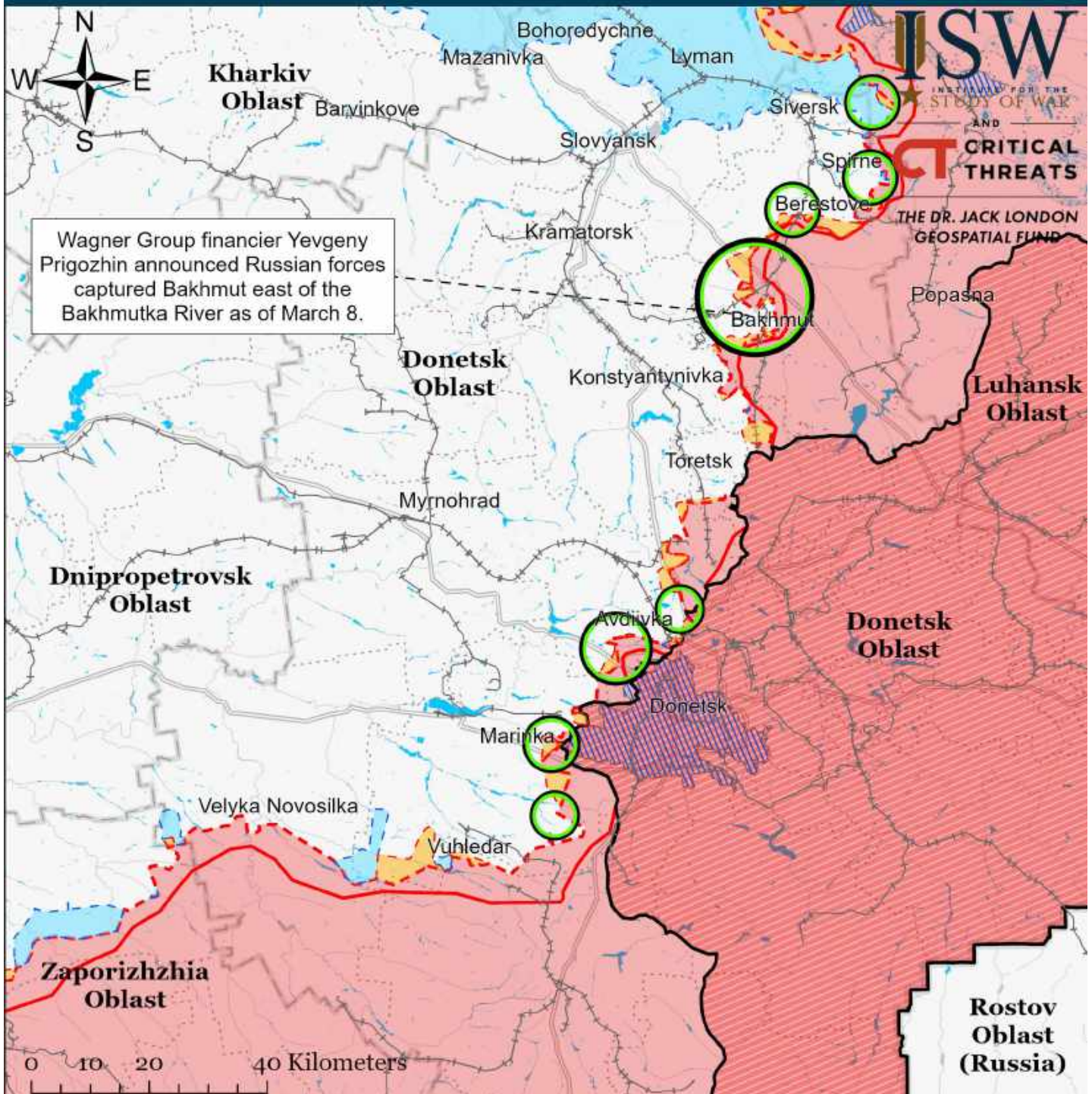


Map by George Barros, Kateryna Stepanenko, Noel Mikkelsen, Daniel Mealie, Thomas Bergeron, Will Kiern, and Mitchell Belcher - © 2023 Institute for the Study of War and AEI's Critical Threats Project

- Significant Fighting in the past 24 Hours
- Assessed Russian-controlled Ukrainian Territory
- Russian-controlled Ukrainian Territory before February 24
- Claimed Russian Control over Ukrainian Territory
- - - Assessed Russian Advances in Ukraine*
- Claimed Ukrainian Counteroffensives
- + Major Railroads
- ▨ Reported Ukrainian Partisan Warfare

* Assessed Russian advances are areas where ISW assesses Russian forces have operated in or launched attacks against but do not control.

Assessed Control of Terrain Around Donetsk as of March 8, 2023, 3:00 PM ET

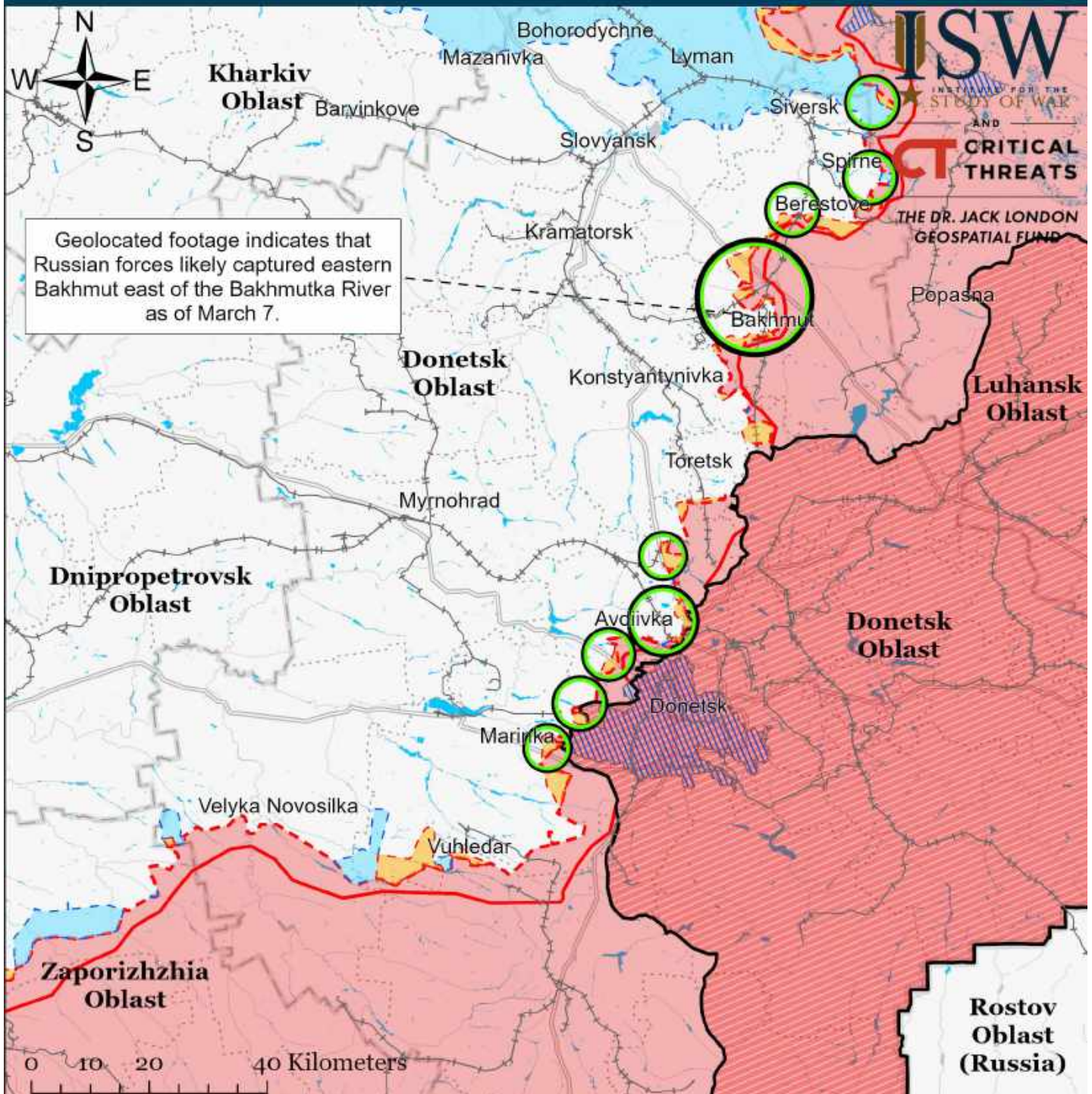


Map by George Barros, Kateryna Stepanenko, Noel Mikkelsen, Daniel Mealie, Thomas Bergeron, Will Kiern, and Mitchell Belcher - © 2023 Institute for the Study of War and AET's Critical Threats Project

- | | | |
|---|--|-------------------------------------|
| Significant Fighting in the past 24 Hours | Assessed Russian-controlled Ukrainian Territory | Major Railroads |
| Russian-controlled Ukrainian Territory before February 24 | Claimed Russian Control over Ukrainian Territory | Reported Ukrainian Partisan Warfare |
| Assessed Russian Advances in Ukraine* | Claimed Ukrainian Counteroffensives | |

* Assessed Russian advances are areas where ISW assesses Russian forces have operated in or launched attacks against but do not control.

Assessed Control of Terrain Around Donetsk as of March 7, 2023, 3:00 PM ET

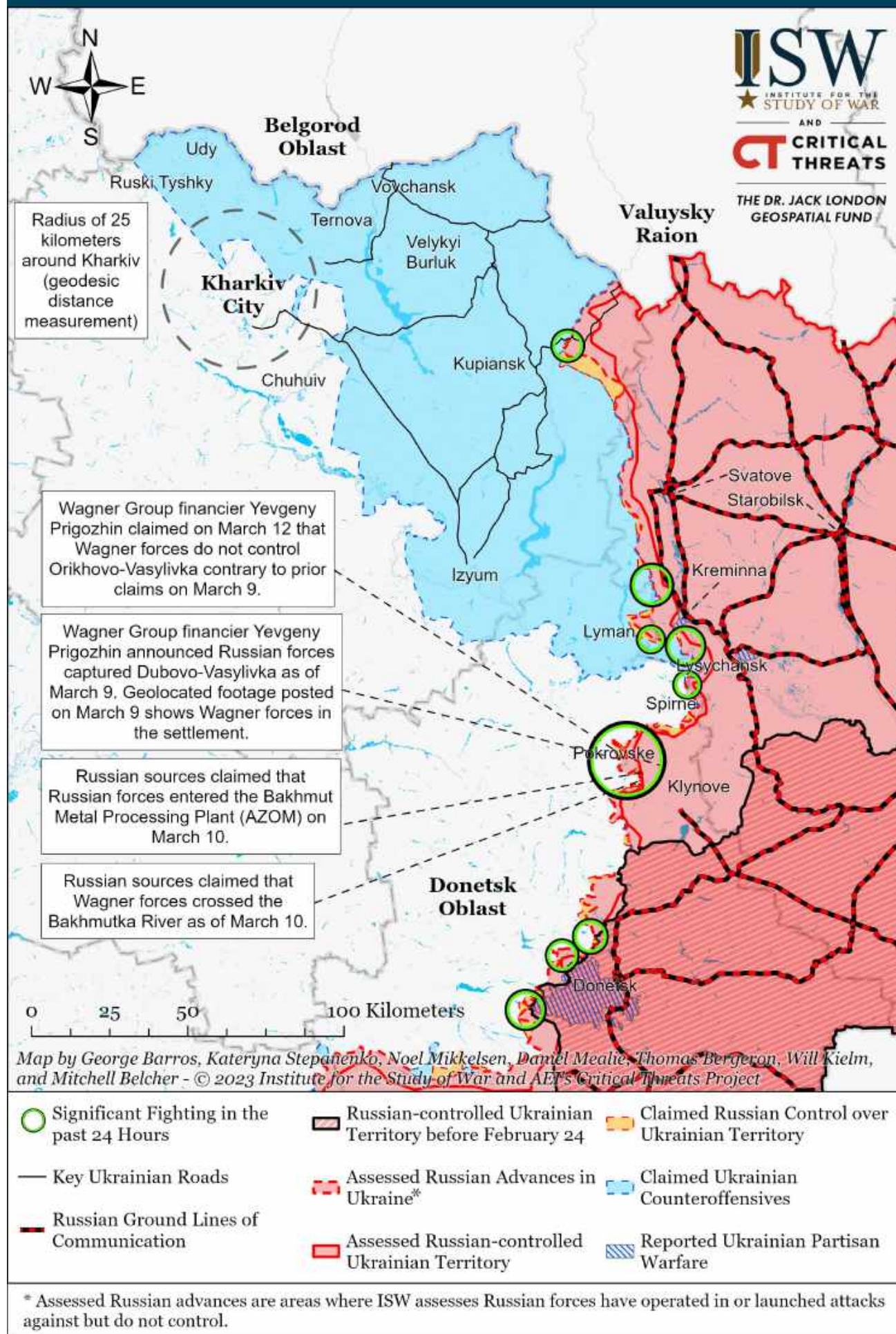


Map by George Barros, Kateryna Stepanenko, Noel Mikkelsen, Daniel Mealie, Thomas Bergeron, Will Kiern, and Mitchell Belcher - © 2023 Institute for the Study of War and AEI's Critical Threats Project

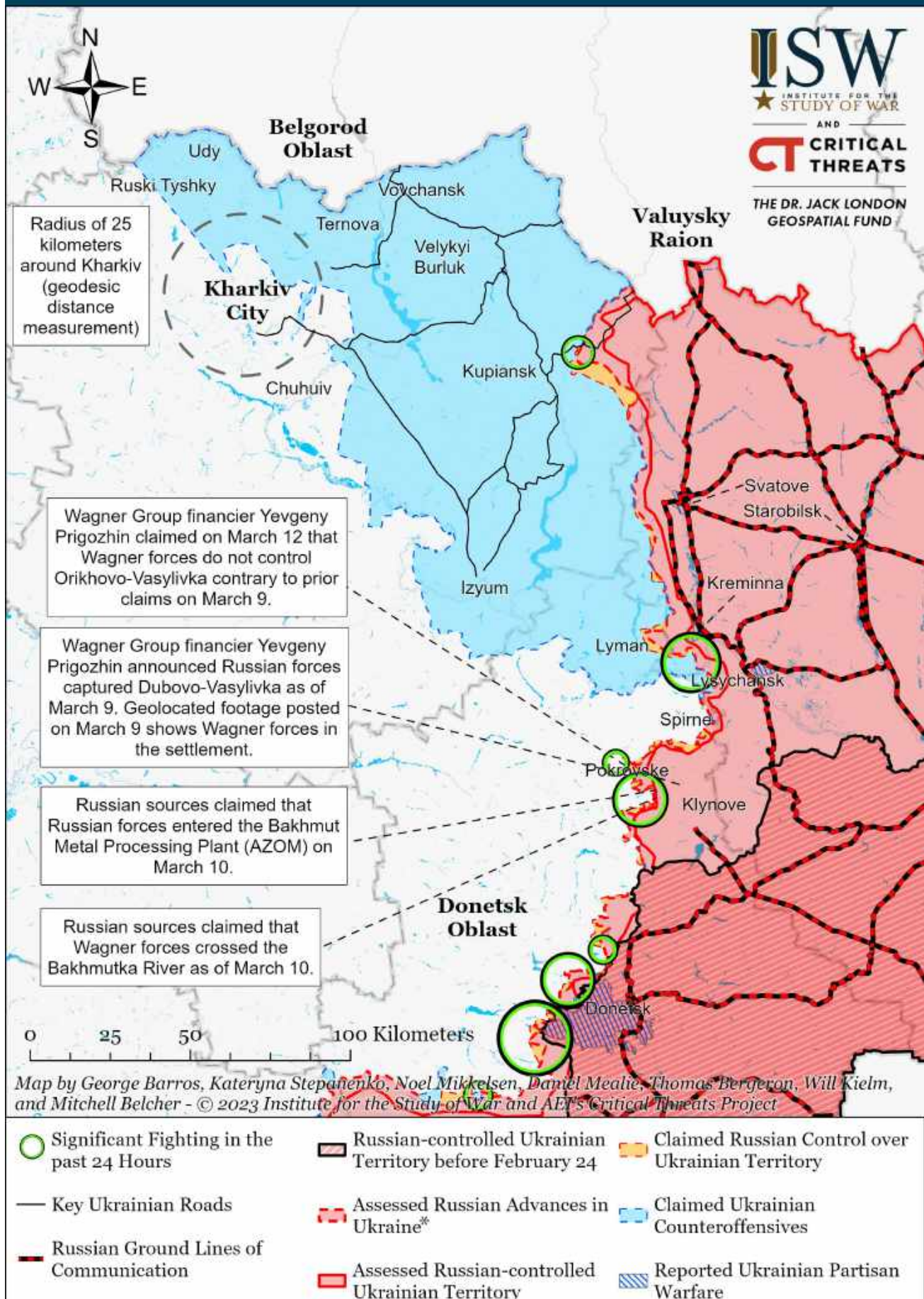
- | | | |
|---|--|-------------------------------------|
| Significant Fighting in the past 24 Hours | Assessed Russian-controlled Ukrainian Territory | Major Railroads |
| Russian-controlled Ukrainian Territory before February 24 | Claimed Russian Control over Ukrainian Territory | Reported Ukrainian Partisan Warfare |
| Assessed Russian Advances in Ukraine* | Claimed Ukrainian Counteroffensives | |

* Assessed Russian advances are areas where ISW assesses Russian forces have operated in or launched attacks against but do not control.

Assessed Control of Terrain Around Kharkiv as of March 13, 2023, 3:00 PM ET

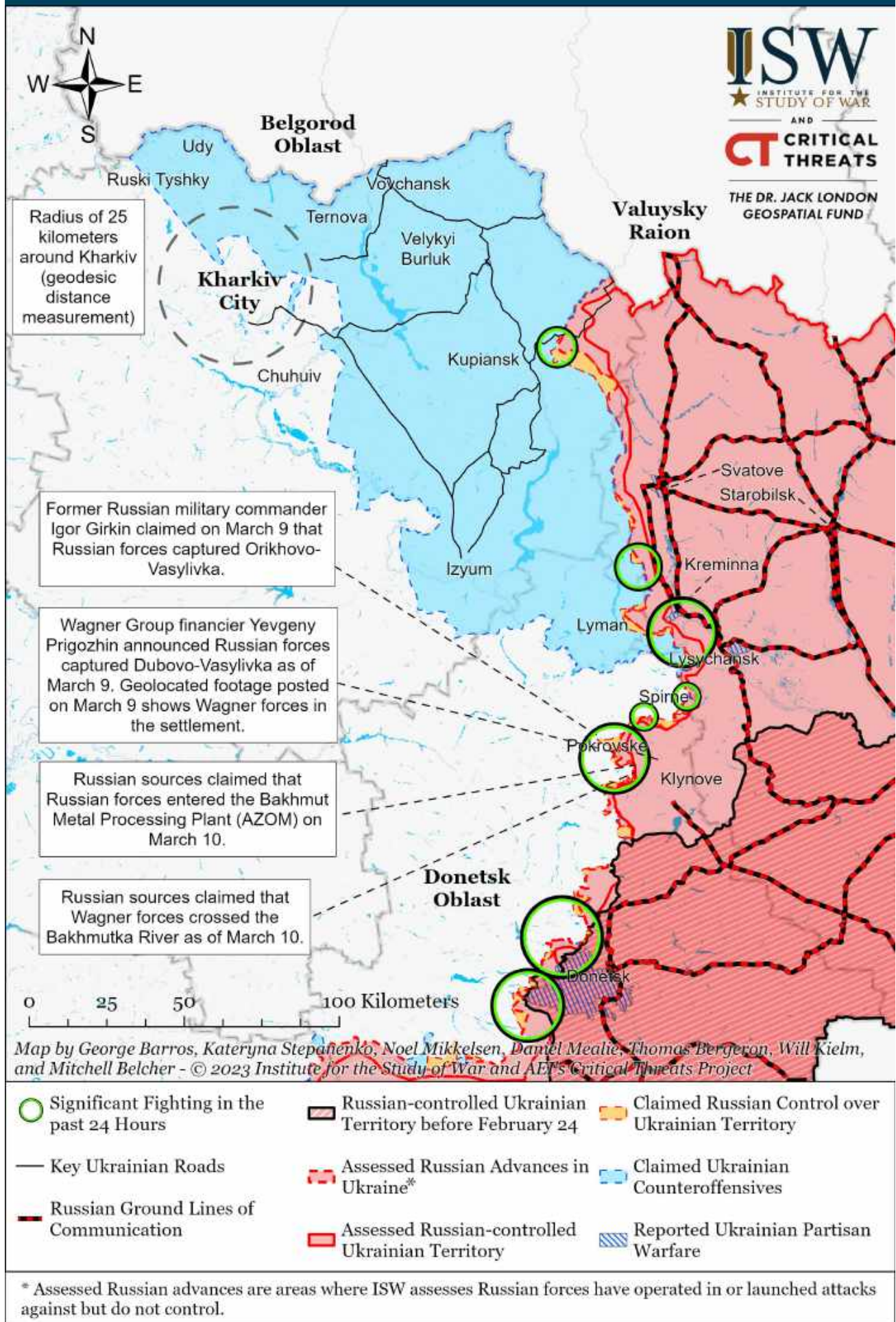


Assessed Control of Terrain Around Kharkiv as of March 12, 2023, 3:00 PM ET

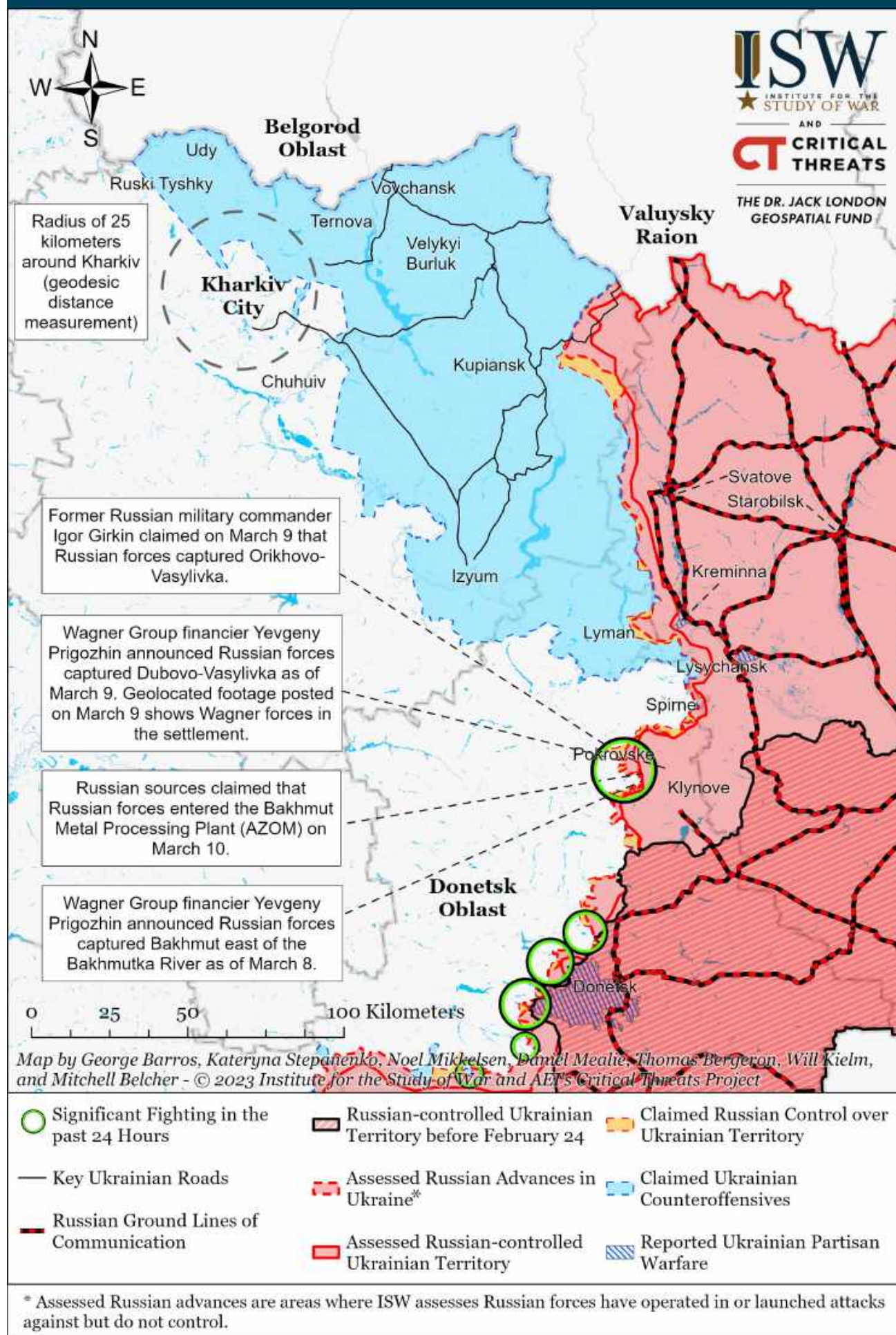


* Assessed Russian advances are areas where ISW assesses Russian forces have operated in or launched attacks against but do not control.

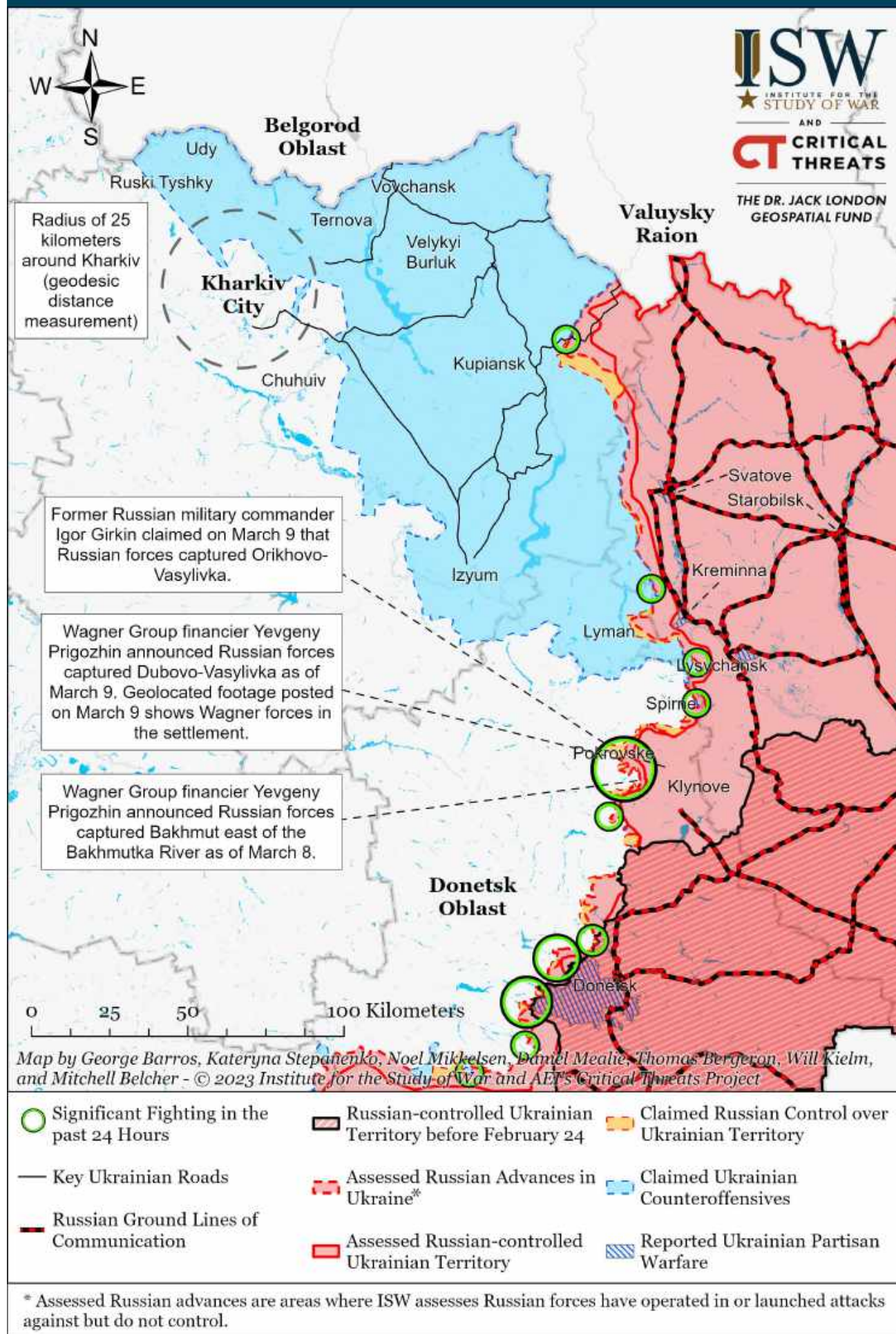
Assessed Control of Terrain Around Kharkiv as of March 11, 2023, 3:00 PM ET



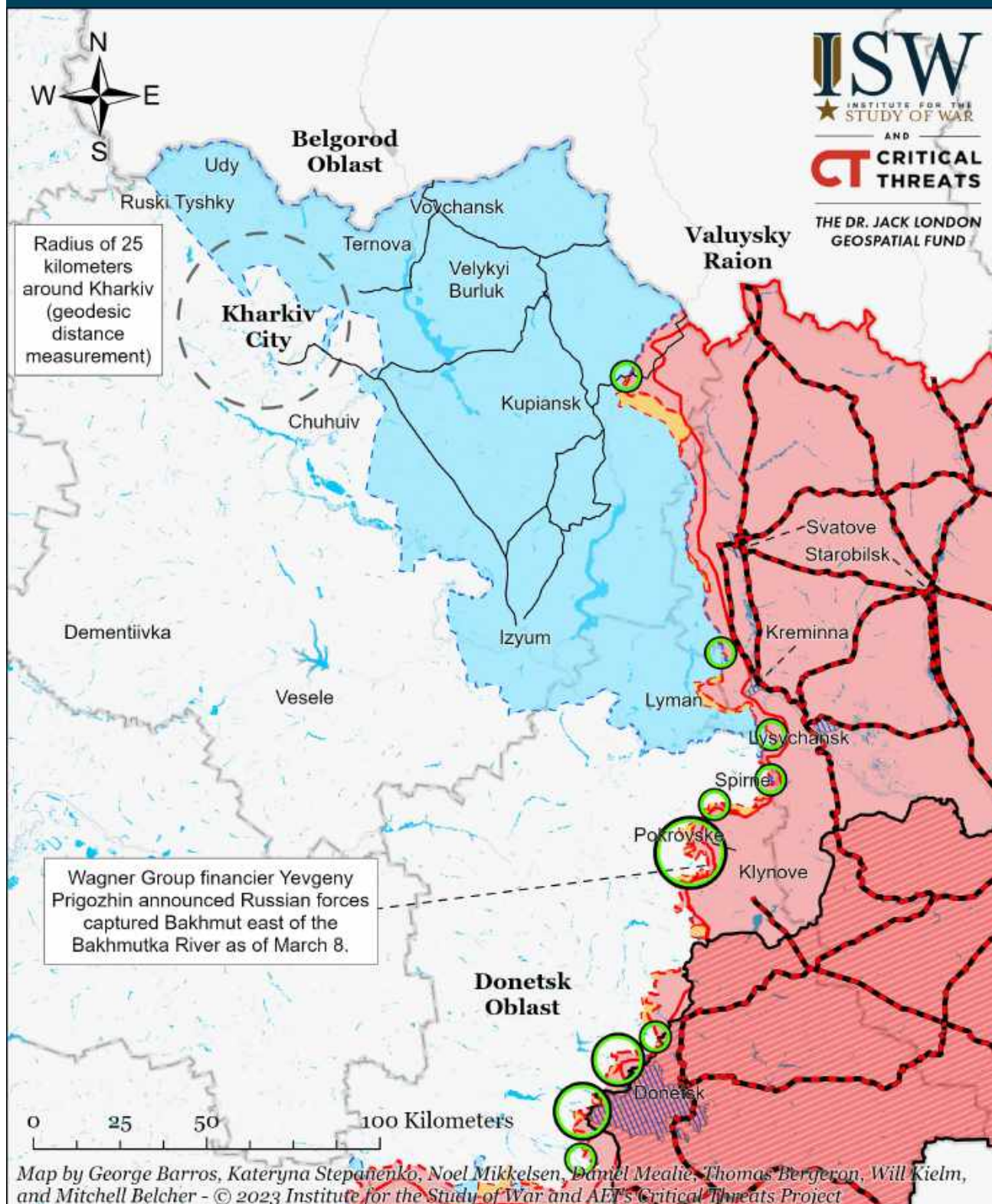
Assessed Control of Terrain Around Kharkiv as of March 10, 2023, 3:00 PM ET



Assessed Control of Terrain Around Kharkiv as of March 9, 2023, 3:00 PM ET



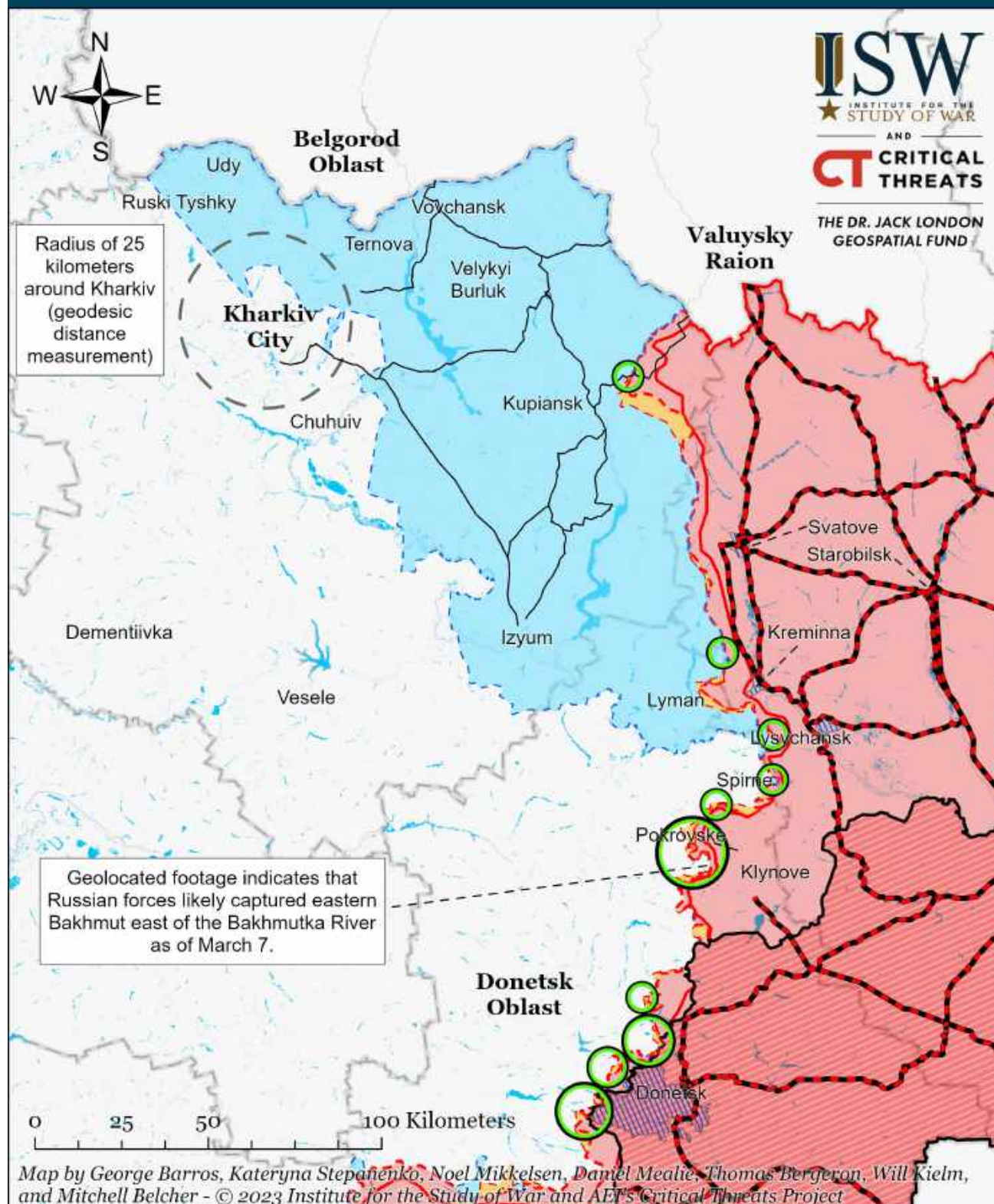
Assessed Control of Terrain Around Kharkiv as of March 8, 2023, 3:00 PM ET



- Significant Fighting in the past 24 Hours
- Key Ukrainian Roads
- Russian Ground Lines of Communication
- Russian-controlled Ukrainian Territory before February 24
- Assessed Russian Advances in Ukraine*
- Assessed Russian-controlled Ukrainian Territory
- Claimed Russian Control over Ukrainian Territory
- Claimed Ukrainian Counteroffensives
- Reported Ukrainian Partisan Warfare

* Assessed Russian advances are areas where ISW assesses Russian forces have operated in or launched attacks against but do not control.

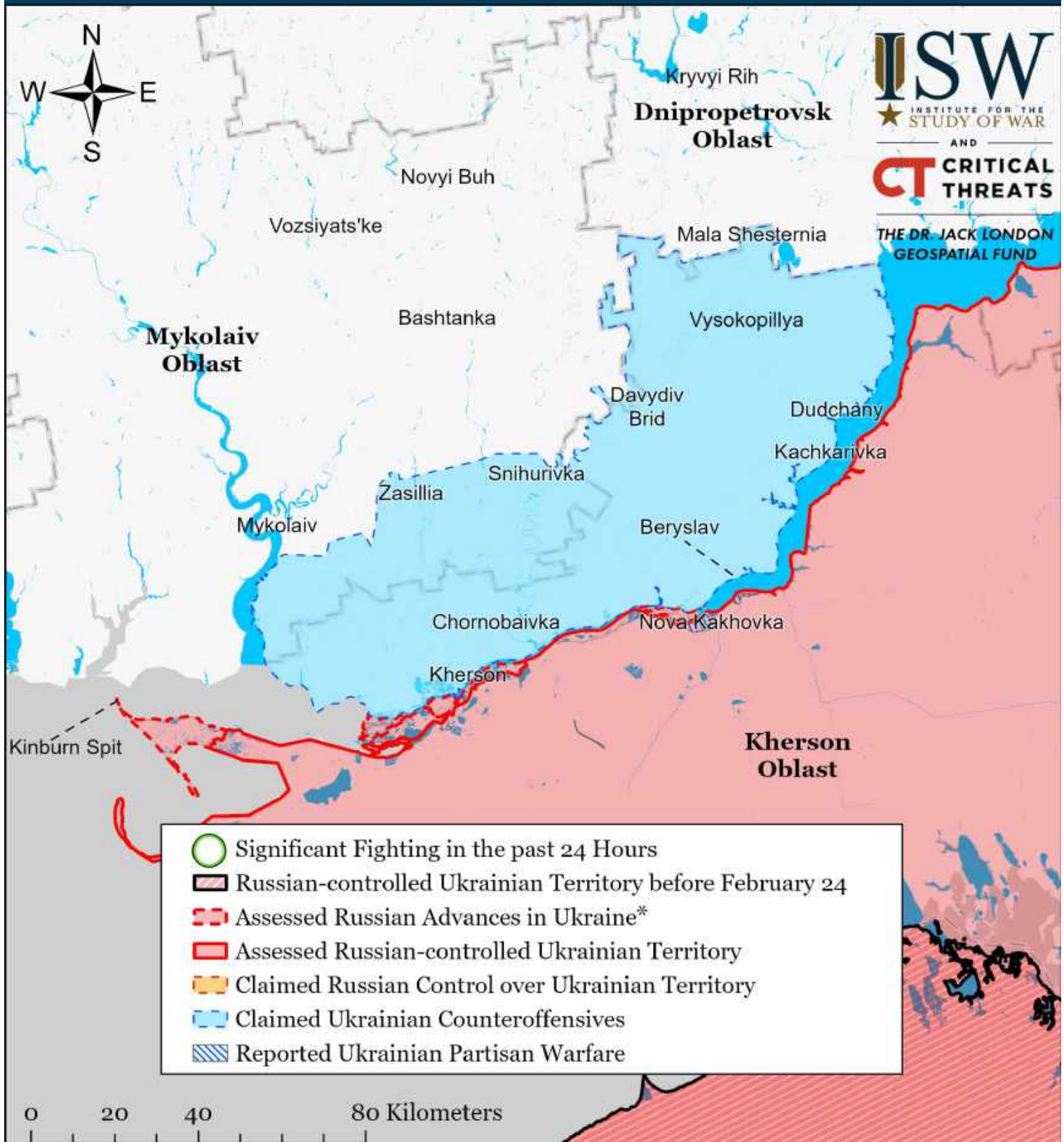
Assessed Control of Terrain Around Kharkiv as of March 7, 2023, 3:00 PM ET



- | | | |
|---|---|--|
| Significant Fighting in the past 24 Hours | Russian-controlled Ukrainian Territory before February 24 | Claimed Russian Control over Ukrainian Territory |
| Key Ukrainian Roads | Assessed Russian Advances in Ukraine* | Claimed Ukrainian Counteroffensives |
| Russian Ground Lines of Communication | Assessed Russian-controlled Ukrainian Territory | Reported Ukrainian Partisan Warfare |

* Assessed Russian advances are areas where ISW assesses Russian forces have operated in or launched attacks against but do not control.

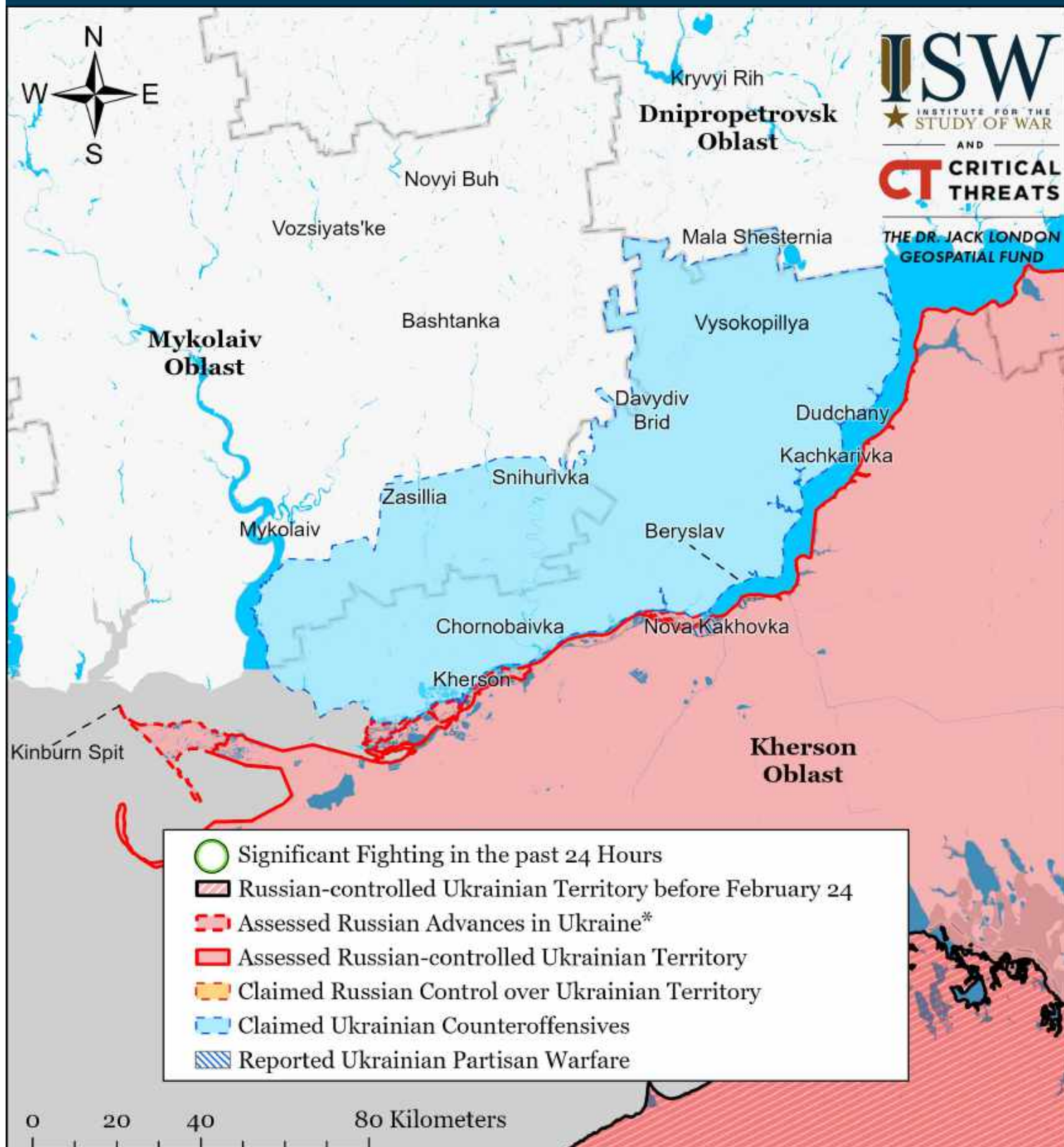
Assessed Control of Terrain Around Kherson and Mykolaiv as of March 13, 2023, 3:00 PM ET



Map by George Barros, Kateryna Stepanenko, Noel Mikkelsen, Daniel Mealie, Thomas Bergeron, Will Kielm, and Mitchell Belcher - © 2023 Institute for the Study of War and AEI's Critical Threats Project

* Assessed Russian advances are areas where ISW assesses Russian forces have operated in or launched attacks against but do not control.

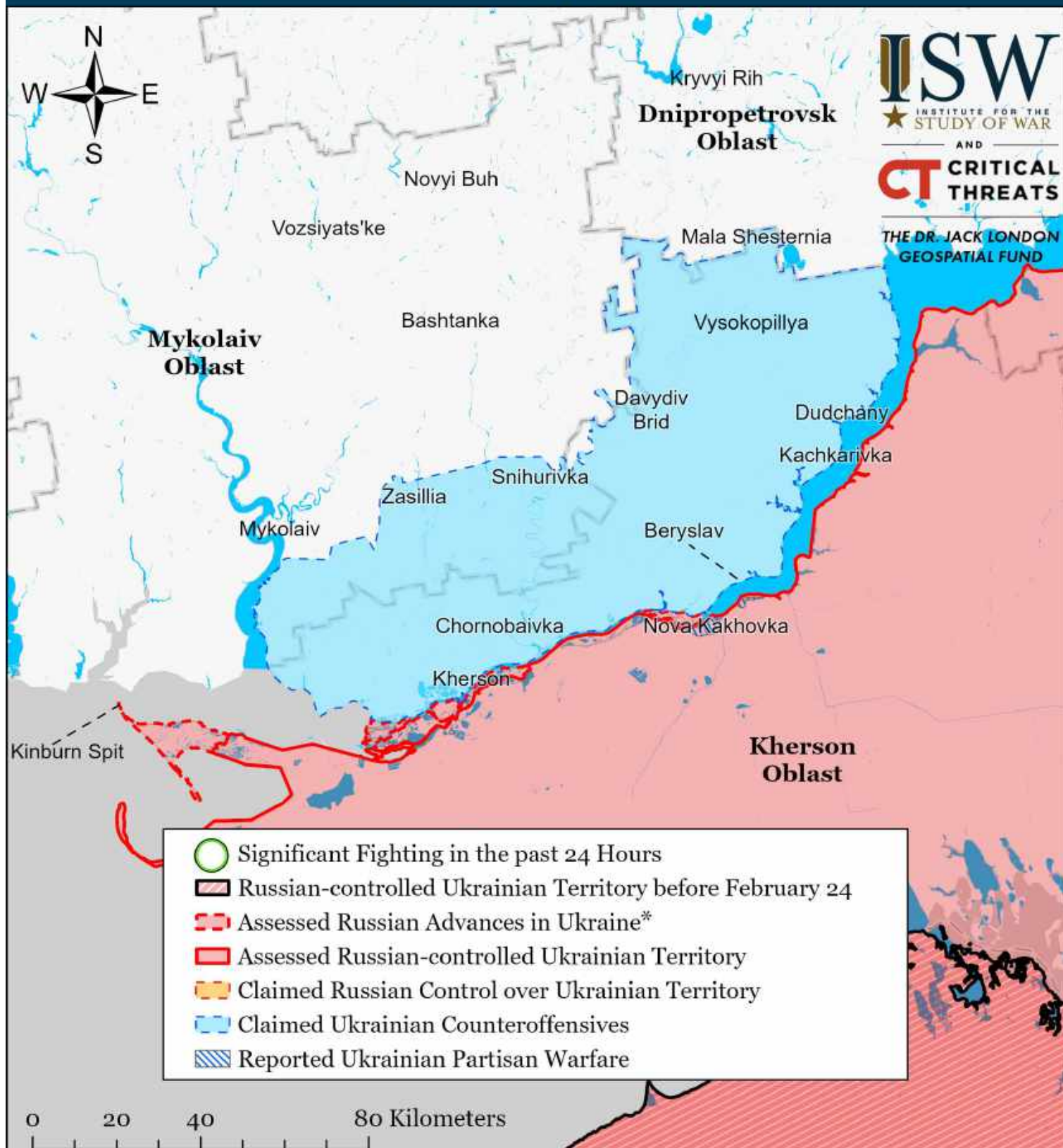
Assessed Control of Terrain Around Kherson and Mykolaiv as of March 12, 2023, 3:00 PM ET



Map by George Barros, Kateryna Stepanenko, Noel Mikkelsen, Daniel Mealie, Thomas Bergeron, Will Kielm, and Mitchell Belcher - © 2023 Institute for the Study of War and AEI's Critical Threats Project

* Assessed Russian advances are areas where ISW assesses Russian forces have operated in or launched attacks against but do not control.

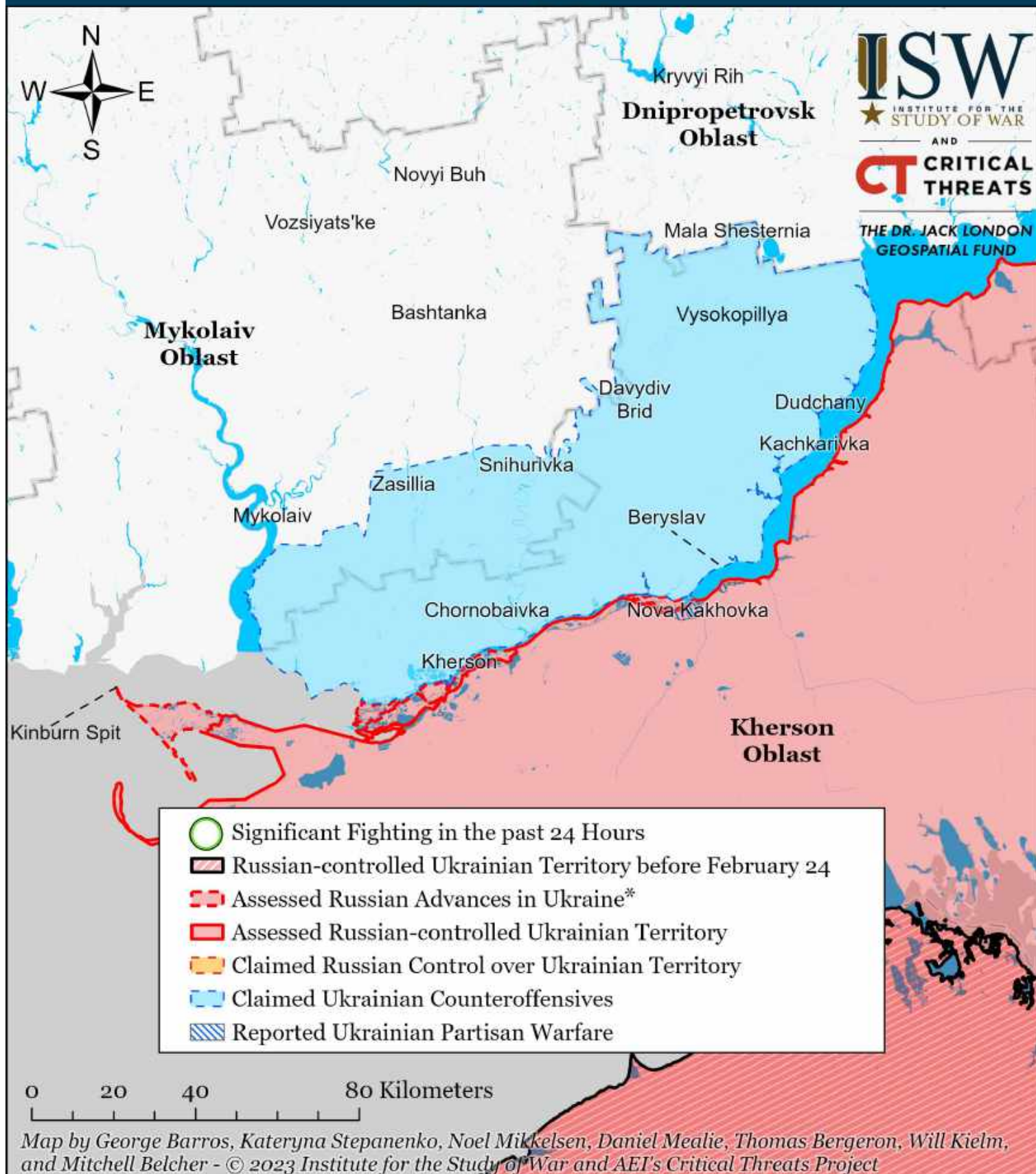
Assessed Control of Terrain Around Kherson and Mykolaiv as of March 11, 2023, 3:00 PM ET



Map by George Barros, Kateryna Stepanenko, Noel Mikkelsen, Daniel Mealie, Thomas Bergeron, Will Kielm, and Mitchell Belcher - © 2023 Institute for the Study of War and AEI's Critical Threats Project

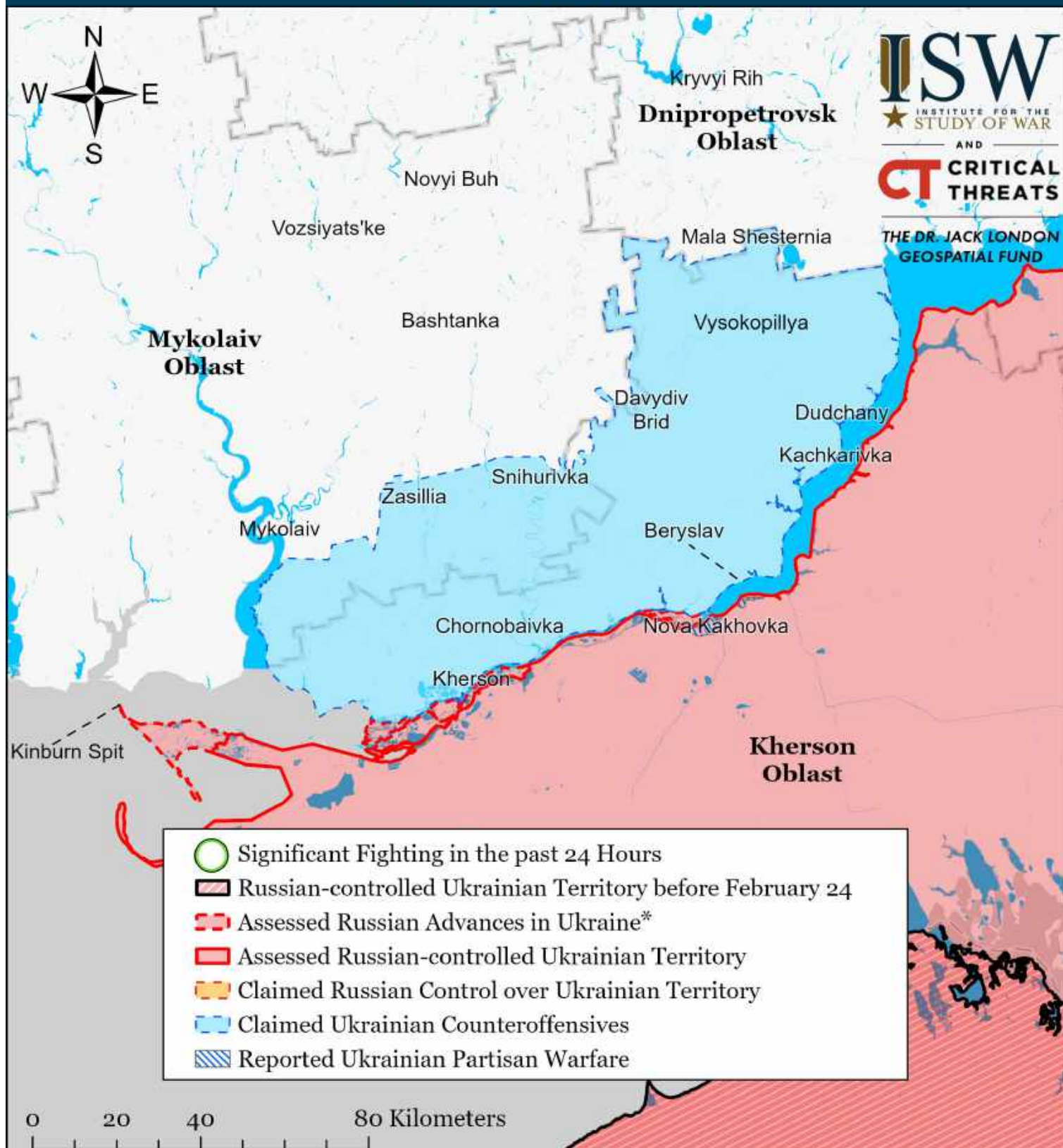
* Assessed Russian advances are areas where ISW assesses Russian forces have operated in or launched attacks against but do not control.

Assessed Control of Terrain Around Kherson and Mykolaiv as of March 10, 2023, 3:00 PM ET



* Assessed Russian advances are areas where ISW assesses Russian forces have operated in or launched attacks against but do not control.

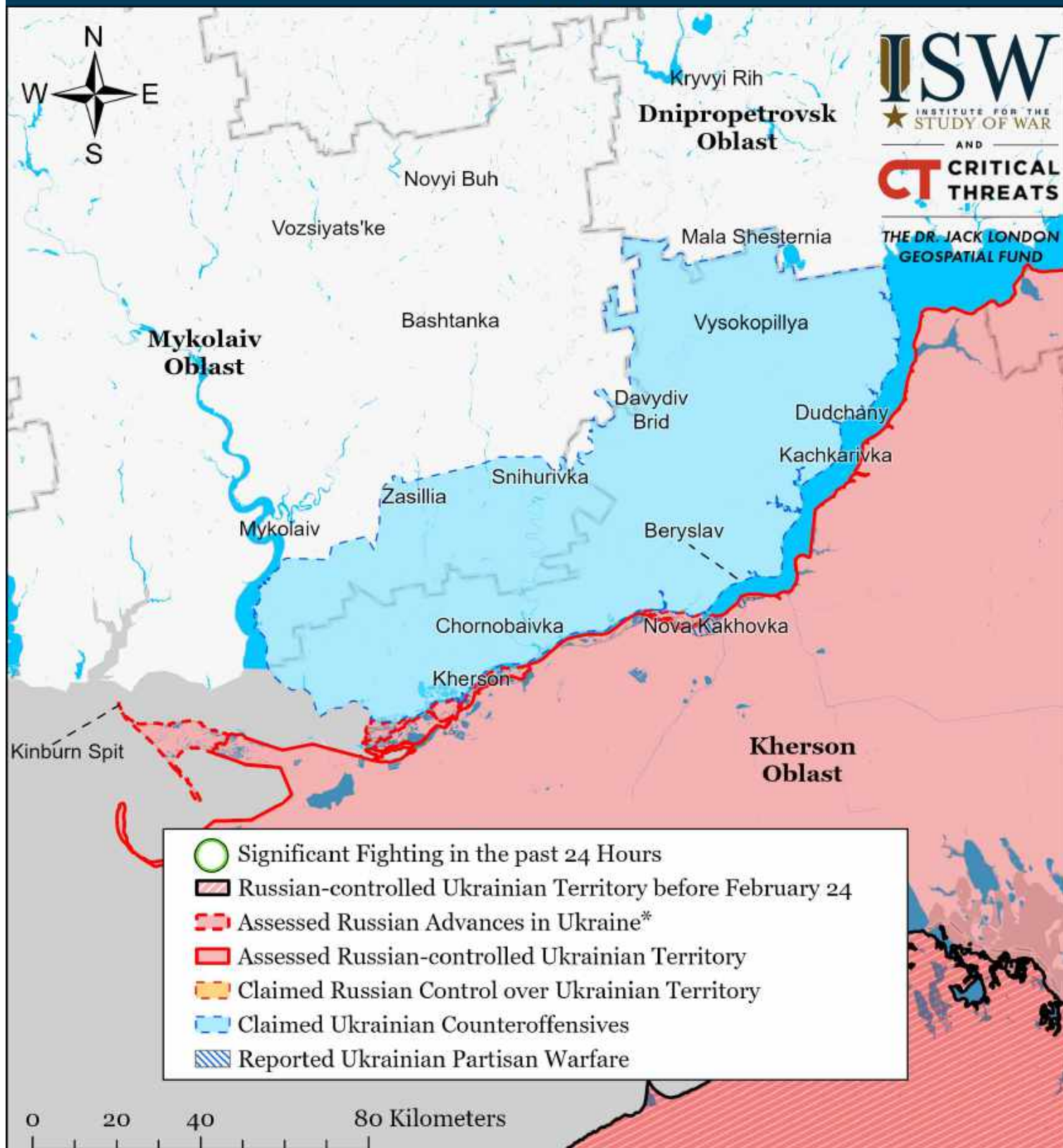
Assessed Control of Terrain Around Kherson and Mykolaiv as of March 9, 2023, 3:00 PM ET



Map by George Barros, Kateryna Stepanenko, Noel Mikkelsen, Daniel Mealie, Thomas Bergeron, Will Kielm, and Mitchell Belcher - © 2023 Institute for the Study of War and AEI's Critical Threats Project

* Assessed Russian advances are areas where ISW assesses Russian forces have operated in or launched attacks against but do not control.

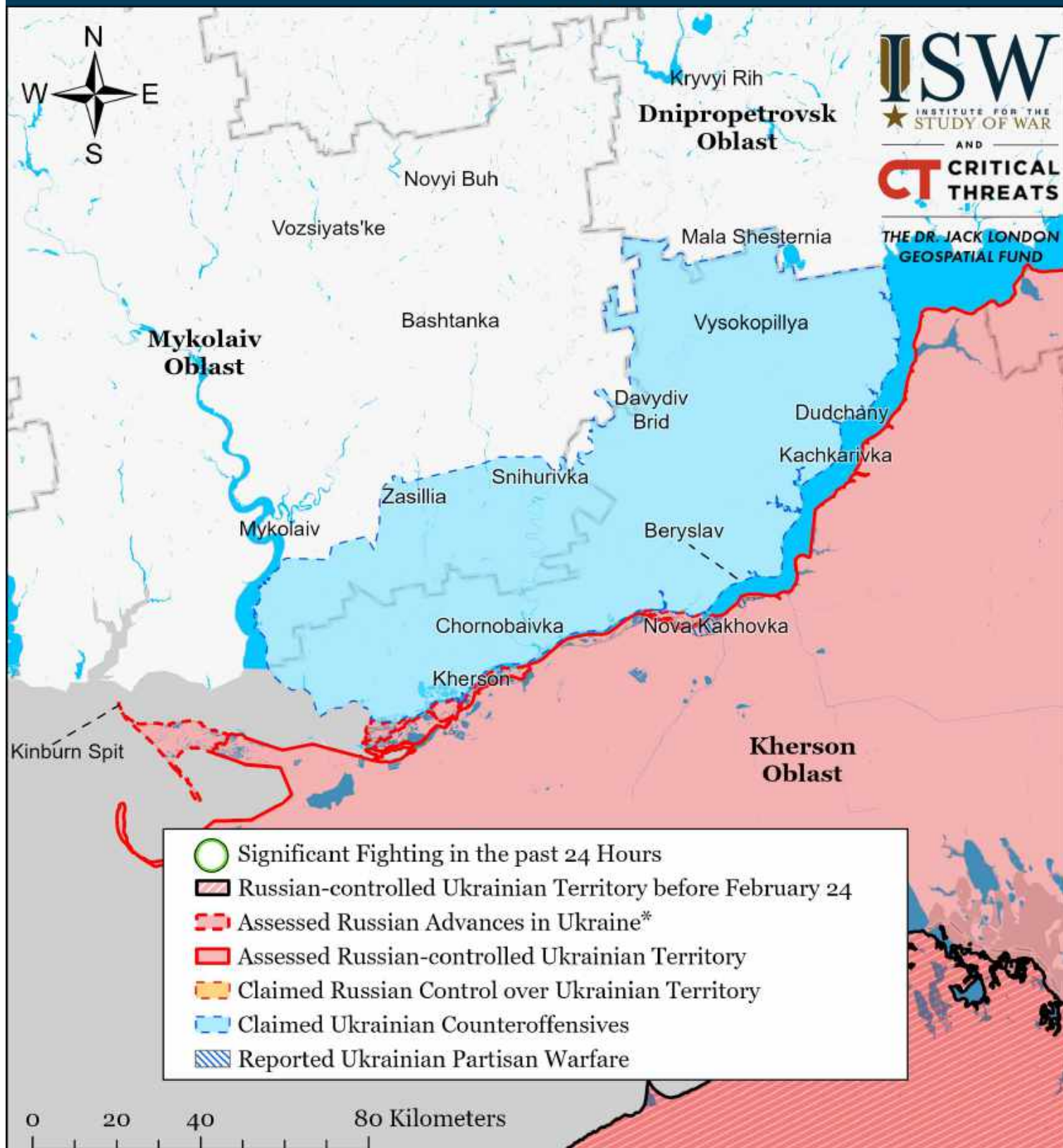
Assessed Control of Terrain Around Kherson and Mykolaiv as of March 8, 2023, 3:00 PM ET



Map by George Barros, Kateryna Stepanenko, Noel Mikkelsen, Daniel Mealie, Thomas Bergeron, Will Kielm, and Mitchell Belcher - © 2023 Institute for the Study of War and AEI's Critical Threats Project

* Assessed Russian advances are areas where ISW assesses Russian forces have operated in or launched attacks against but do not control.

Assessed Control of Terrain Around Kherson and Mykolaiv as of March 7, 2023, 3:00 PM ET



Map by George Barros, Kateryna Stepanenko, Noel Mikkelsen, Daniel Mealie, Thomas Bergeron, Will Kielm, and Mitchell Belcher - © 2023 Institute for the Study of War and AEI's Critical Threats Project

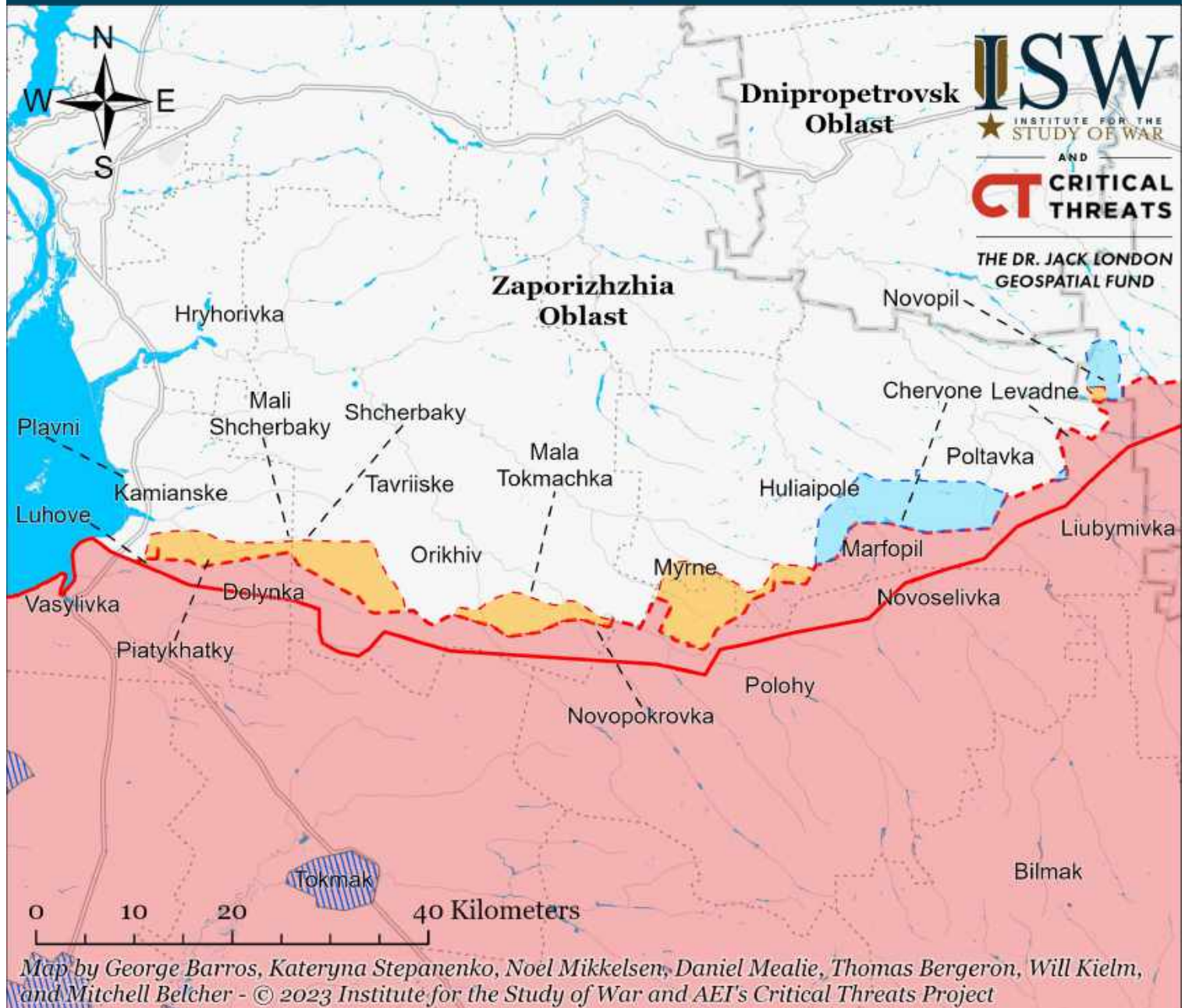
* Assessed Russian advances are areas where ISW assesses Russian forces have operated in or launched attacks against but do not control.

Reported Wagner Group Recruiting Centers as of March 10, 2023



- ★ Wagner Group Headquarters
- ⊗ Wagner Recruitment Center

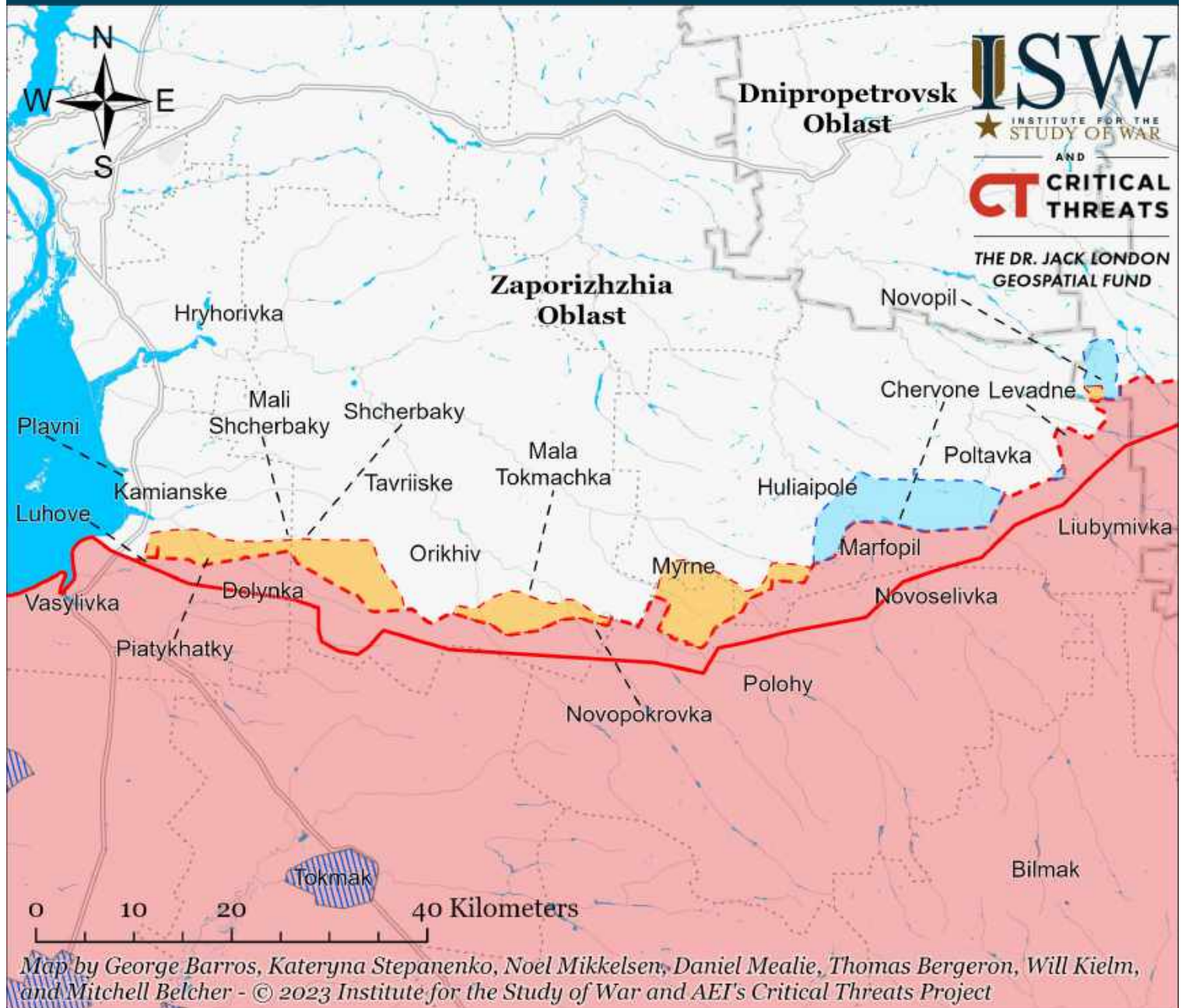
Assessed Control of Terrain Around Zaporizhzhia as of March 13, 2023, 3:00 PM ET



- Significant Fighting in the past 24 Hours
- Assessed Russian-controlled Ukrainian Territory
- ▨ Reported Ukrainian Partisan Warfare
- Russian-controlled Ukrainian Territory before February 24
- Claimed Russian Control over Ukrainian Territory
- - - Assessed Russian Advances in Ukraine*
- Claimed Ukrainian Counteroffensives

* Assessed Russian advances are areas where ISW assesses Russian forces have operated in or launched attacks against but do not control.

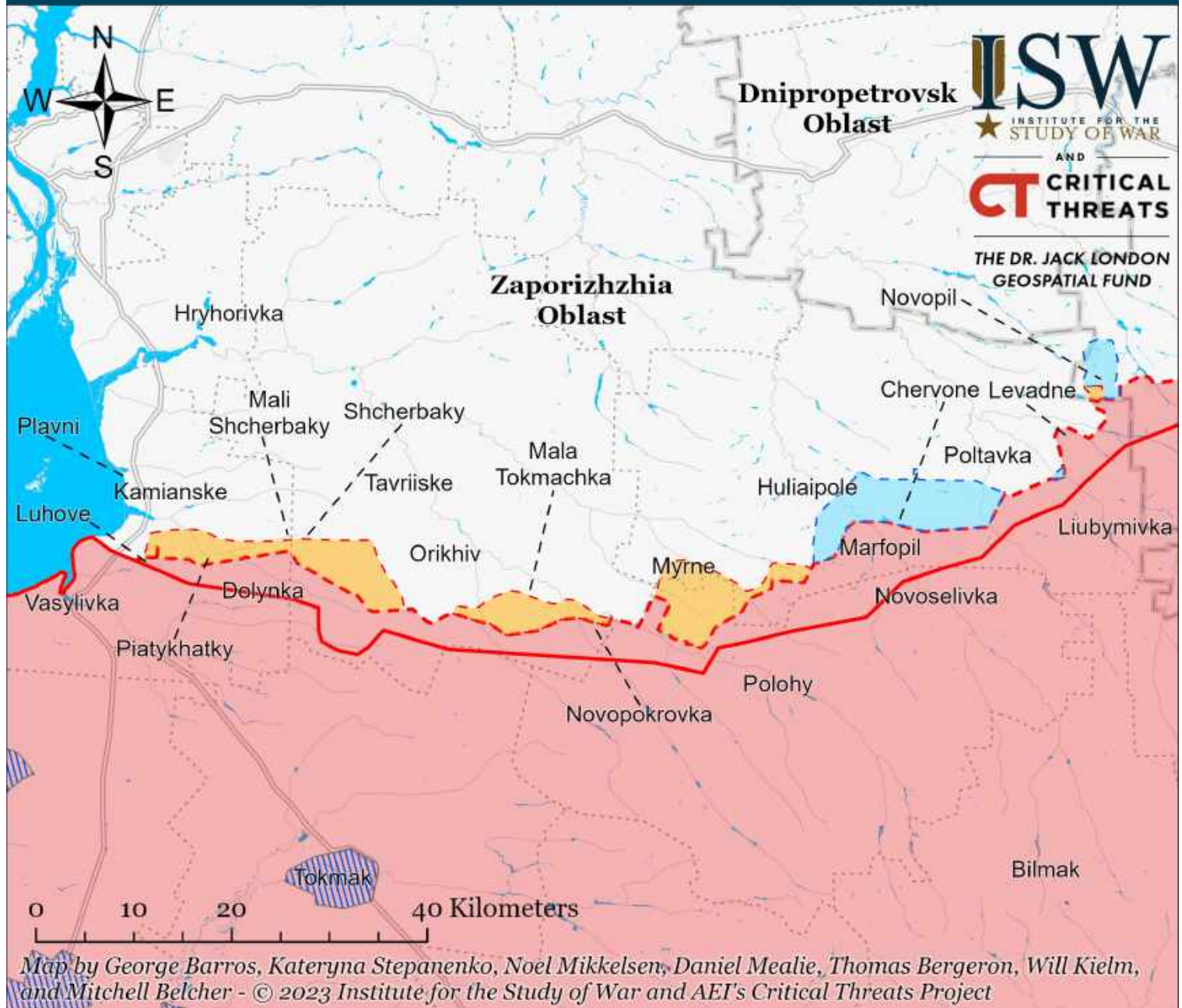
Assessed Control of Terrain Around Zaporizhzhia as of March 12, 2023, 3:00 PM ET



- Significant Fighting in the past 24 Hours
- Assessed Russian-controlled Ukrainian Territory
- ▨ Reported Ukrainian Partisan Warfare
- Russian-controlled Ukrainian Territory before February 24
- Claimed Russian Control over Ukrainian Territory
- - - Assessed Russian Advances in Ukraine*
- Claimed Ukrainian Counteroffensives

* Assessed Russian advances are areas where ISW assesses Russian forces have operated in or launched attacks against but do not control.

Assessed Control of Terrain Around Zaporizhzhia as of March 11, 2023, 3:00 PM ET

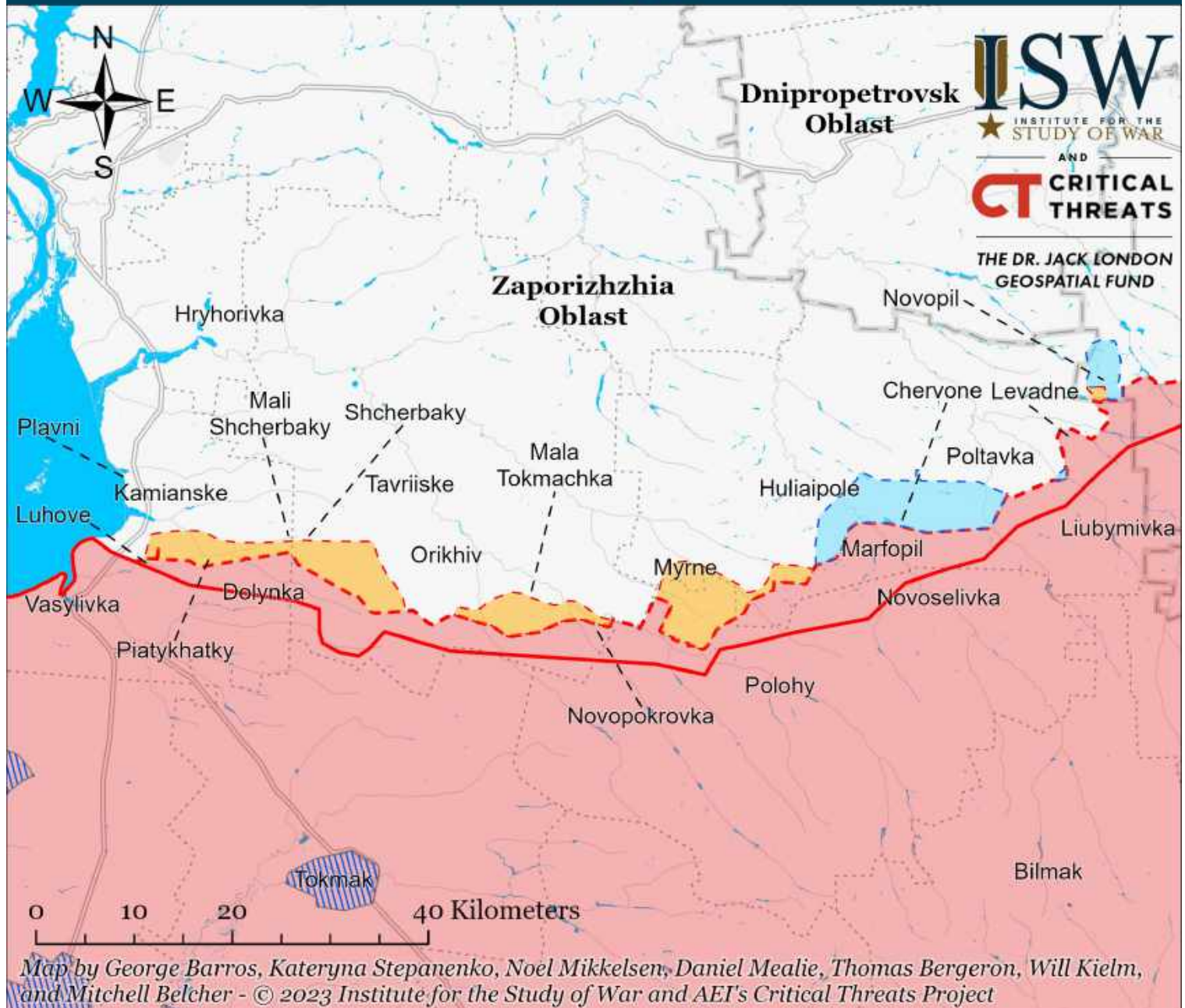


Map by George Barros, Kateryna Stepanenko, Noel Mikkelsen, Daniel Mealie, Thomas Bergeron, Will Kielm, and Mitchell Belcher - © 2023 Institute for the Study of War and AET's Critical Threats Project

- Significant Fighting in the past 24 Hours
- Assessed Russian-controlled Ukrainian Territory
- Reported Ukrainian Partisan Warfare
- Russian-controlled Ukrainian Territory before February 24
- Claimed Russian Control over Ukrainian Territory
- - - Assessed Russian Advances in Ukraine*
- Claimed Ukrainian Counteroffensives

* Assessed Russian advances are areas where ISW assesses Russian forces have operated in or launched attacks against but do not control.

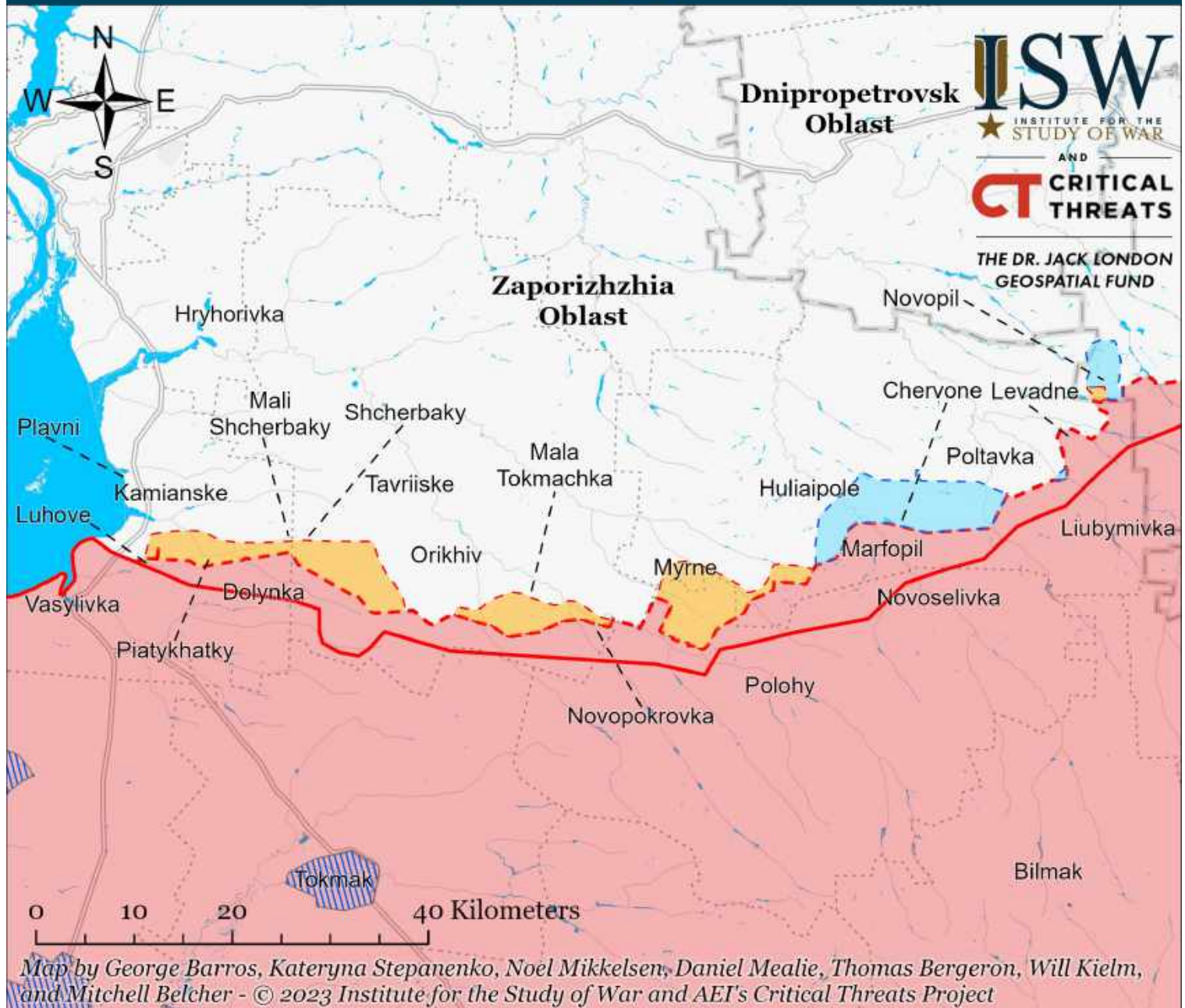
Assessed Control of Terrain Around Zaporizhzhia as of March 10, 2023, 3:00 PM ET



- Significant Fighting in the past 24 Hours
- Assessed Russian-controlled Ukrainian Territory
- ▨ Reported Ukrainian Partisan Warfare
- Russian-controlled Ukrainian Territory before February 24
- Claimed Russian Control over Ukrainian Territory
- - - Assessed Russian Advances in Ukraine*
- Claimed Ukrainian Counteroffensives

* Assessed Russian advances are areas where ISW assesses Russian forces have operated in or launched attacks against but do not control.

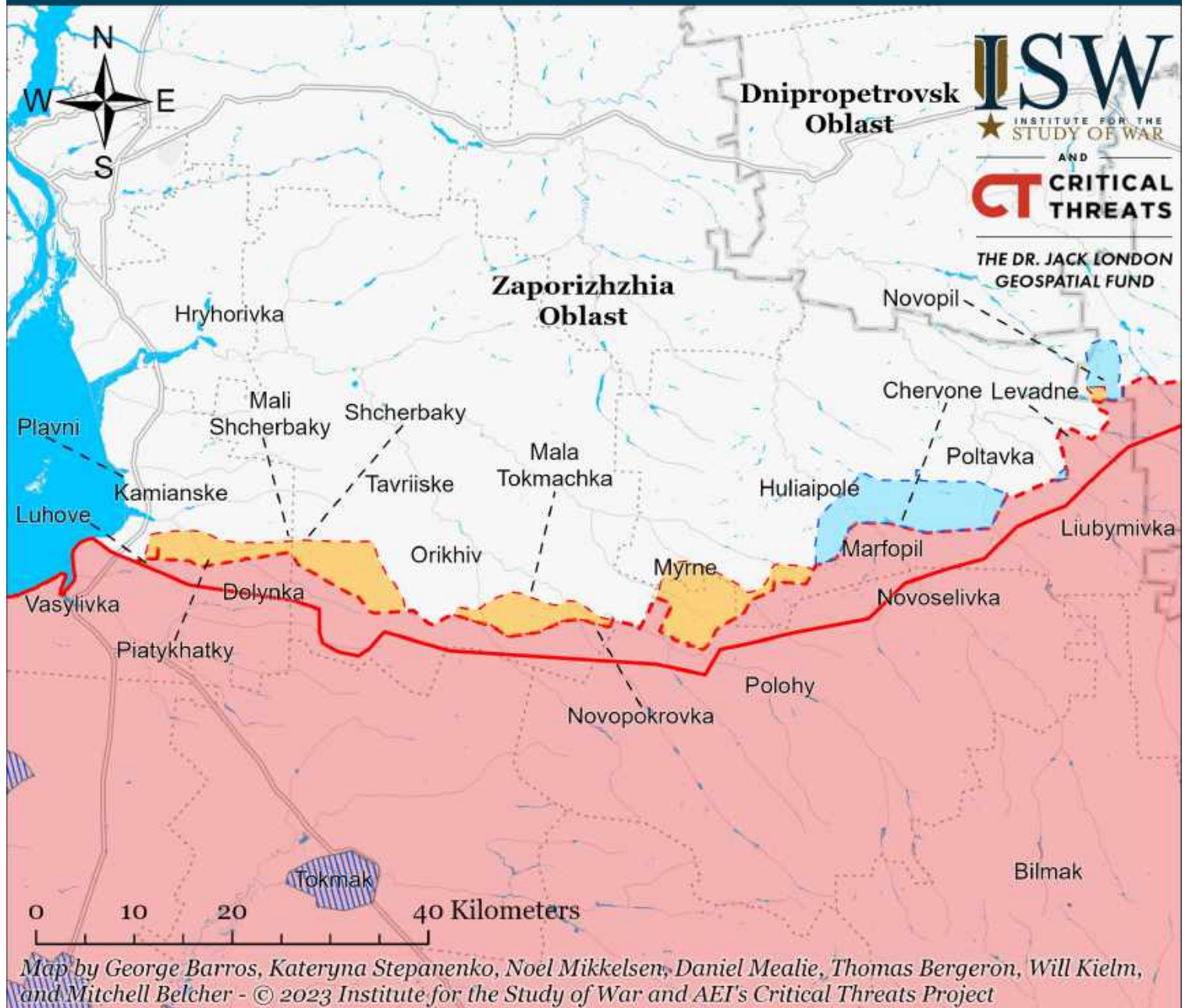
Assessed Control of Terrain Around Zaporizhzhia as of March 9, 2023, 3:00 PM ET



- Significant Fighting in the past 24 Hours
- Assessed Russian-controlled Ukrainian Territory
- ▨ Reported Ukrainian Partisan Warfare
- Russian-controlled Ukrainian Territory before February 24
- Claimed Russian Control over Ukrainian Territory
- - - Assessed Russian Advances in Ukraine*
- Claimed Ukrainian Counteroffensives

* Assessed Russian advances are areas where ISW assesses Russian forces have operated in or launched attacks against but do not control.

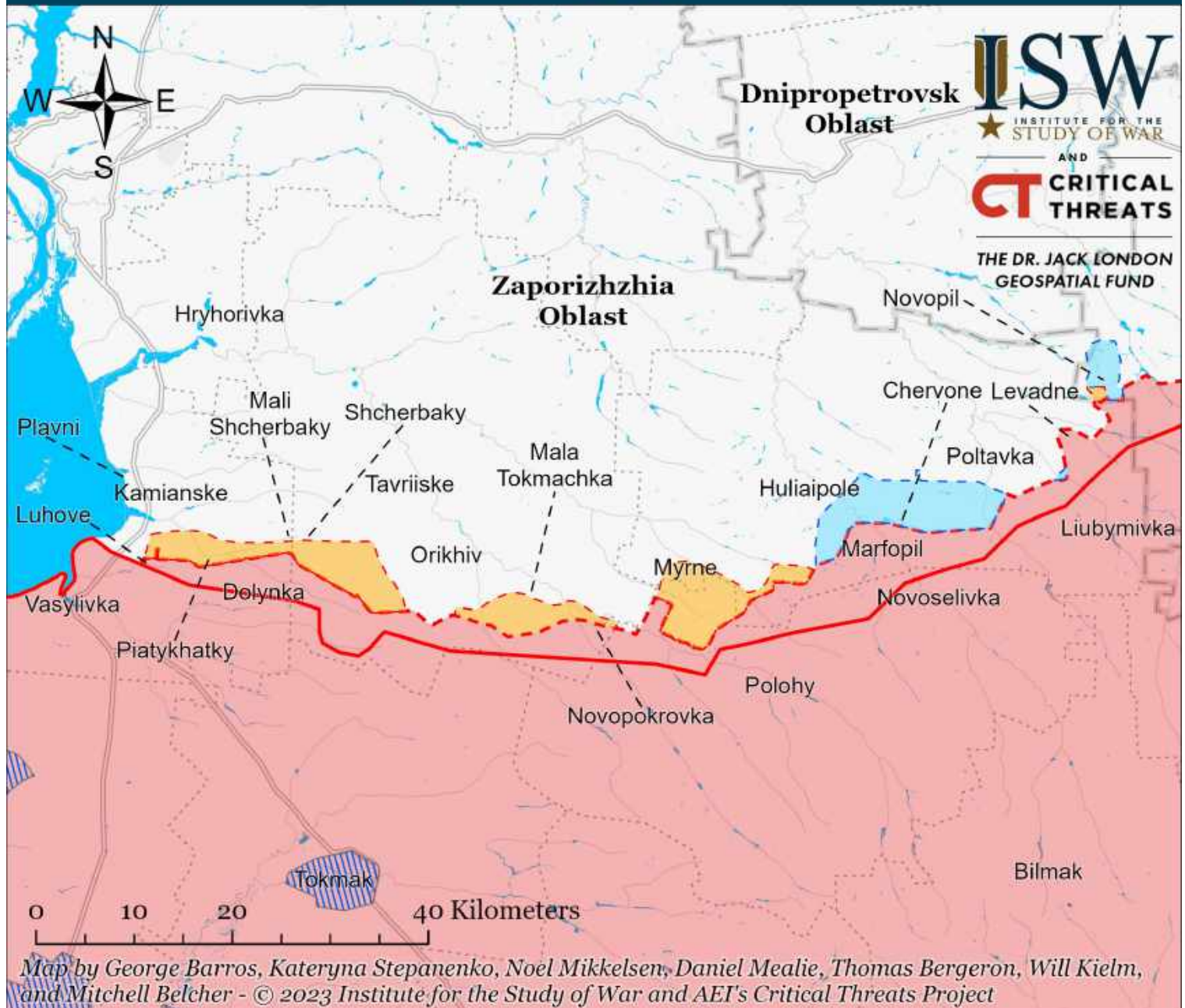
Assessed Control of Terrain Around Zaporizhia as of March 8, 2023, 3:00 PM ET



- Significant Fighting in the past 24 Hours
- Assessed Russian-controlled Ukrainian Territory
- Reported Ukrainian Partisan Warfare
- Russian-controlled Ukrainian Territory before February 24
- Claimed Russian Control over Ukrainian Territory
- Assessed Russian Advances in Ukraine*
- Claimed Ukrainian Counteroffensives

* Assessed Russian advances are areas where ISW assesses Russian forces have operated in or launched attacks against but do not control.

Assessed Control of Terrain Around Zaporizhzhia as of March 7, 2023, 3:00 PM ET



- Significant Fighting in the past 24 Hours
- Assessed Russian-controlled Ukrainian Territory
- ▨ Reported Ukrainian Partisan Warfare
- Russian-controlled Ukrainian Territory before February 24
- Claimed Russian Control over Ukrainian Territory
- - - Assessed Russian Advances in Ukraine*
- Claimed Ukrainian Counteroffensives

* Assessed Russian advances are areas where ISW assesses Russian forces have operated in or launched attacks against but do not control.