

# Assessed Control of Terrain in Ukraine and Main Russian Maneuver Axes as of March 27, 2023, 3:00 PM ET

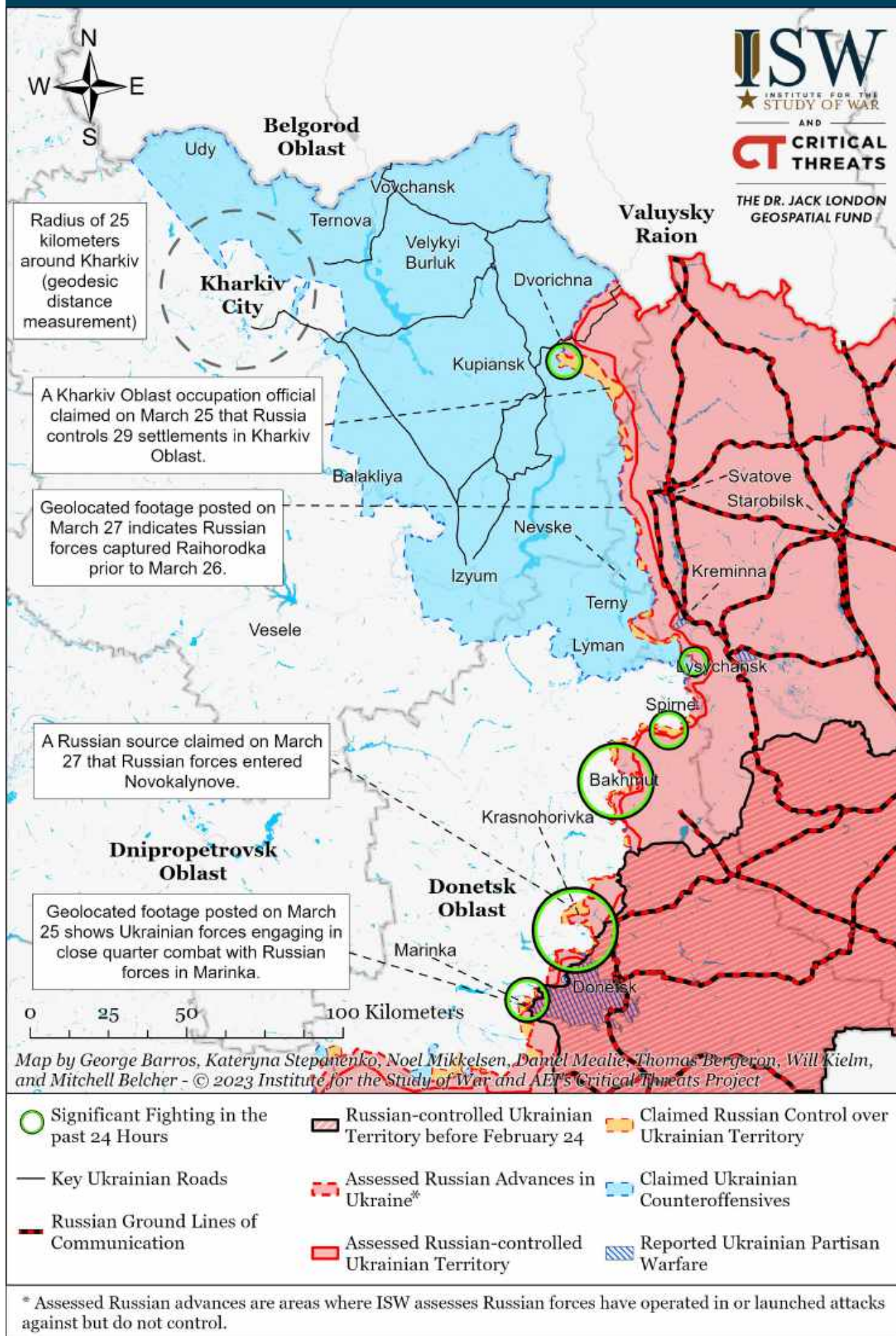


Map by George Barros, Kateryna Stepanenko, Noel Mikkelsen, Daniel Mealie, Thomas Bergeron, Will Kielm, and Mitchell Belcher - © 2023 Institute for the Study of War and AEI's Critical Threats Project

\* Assessed Russian advances are areas where ISW assesses Russian forces have operated in or launched attacks against but do not control.

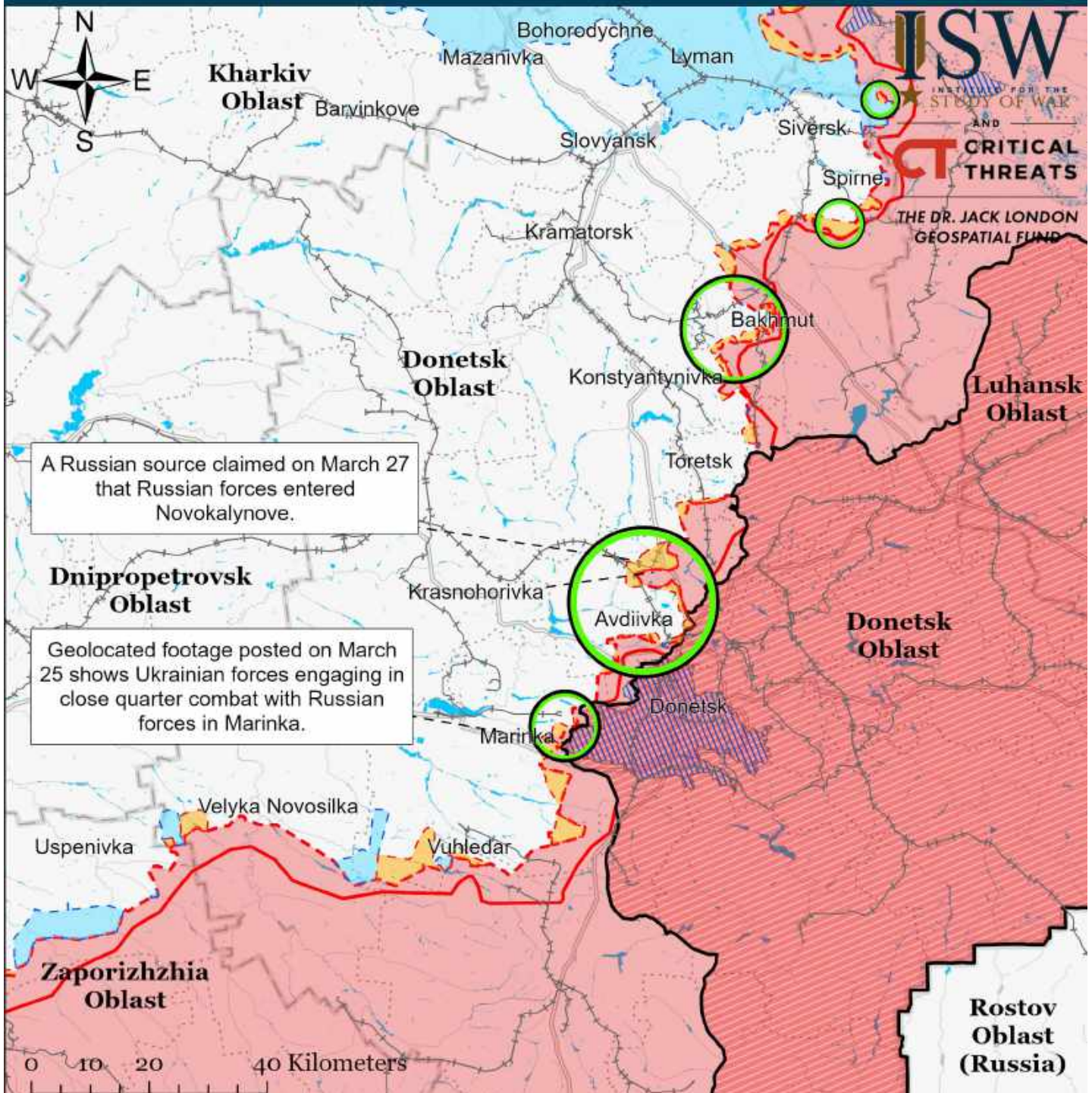


# Assessed Control of Terrain Around Kharkiv as of March 27, 2023, 3:00 PM ET





# Assessed Control of Terrain Around Donetsk as of March 27, 2023, 3:00 PM ET



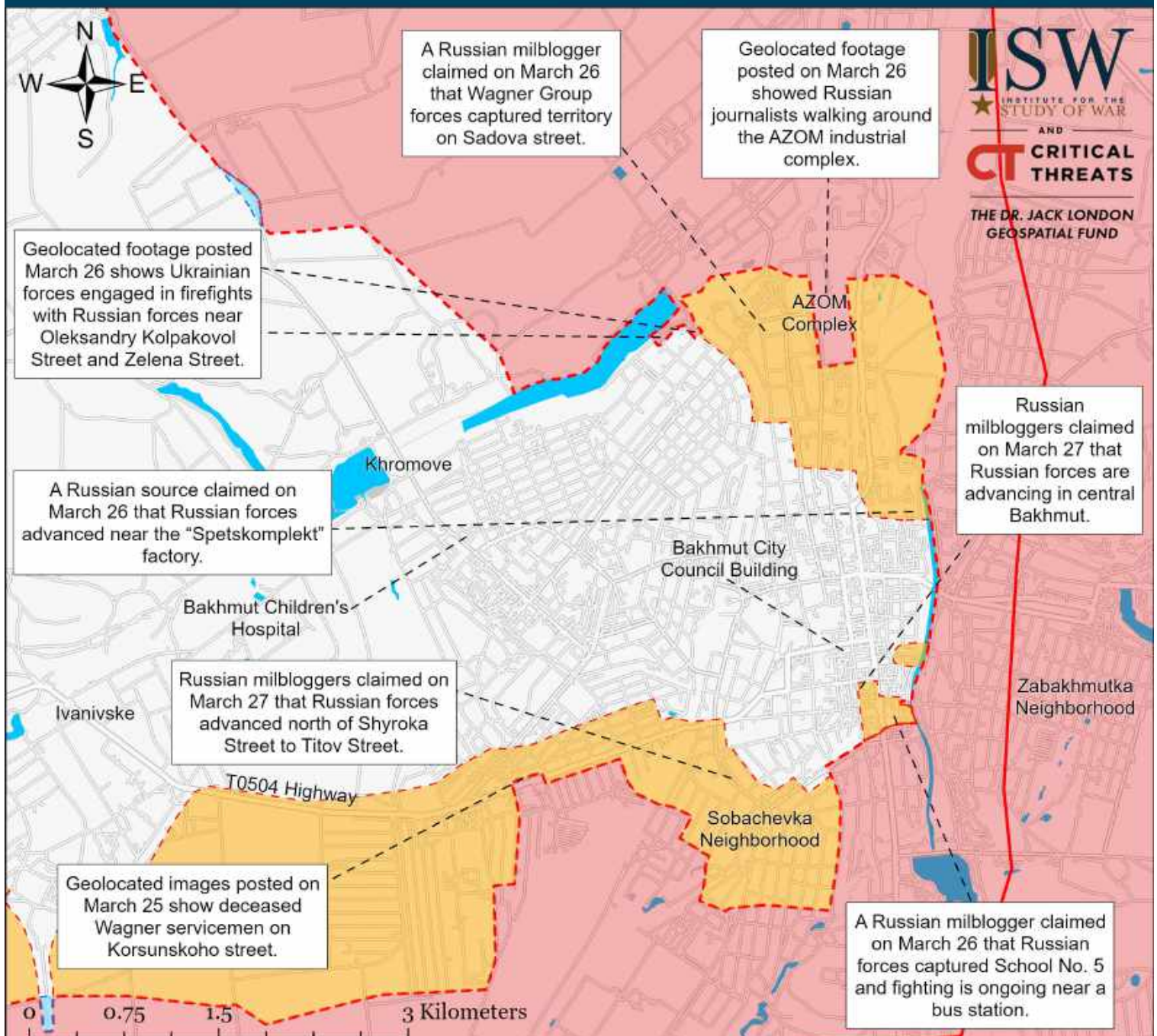
Map by George Barros, Kateryna Stepanenko, Noel Mikkelsen, Daniel Mealie, Thomas Bergeron, Will Kiern, and Mitchell Belcher - © 2023 Institute for the Study of War and AEI's Critical Threats Project

- Significant Fighting in the past 24 Hours
- Russian-controlled Ukrainian Territory before February 24
- Assessed Russian Advances in Ukraine\*
- Assessed Russian-controlled Ukrainian Territory
- Claimed Russian Control over Ukrainian Territory
- Claimed Ukrainian Counteroffensives
- Major Railroads
- Reported Ukrainian Partisan Warfare

\* Assessed Russian advances are areas where ISW assesses Russian forces have operated in or launched attacks against but do not control.



# Assessed Control of Terrain in Bakhmut as of March 27, 2023, 3:00 PM ET

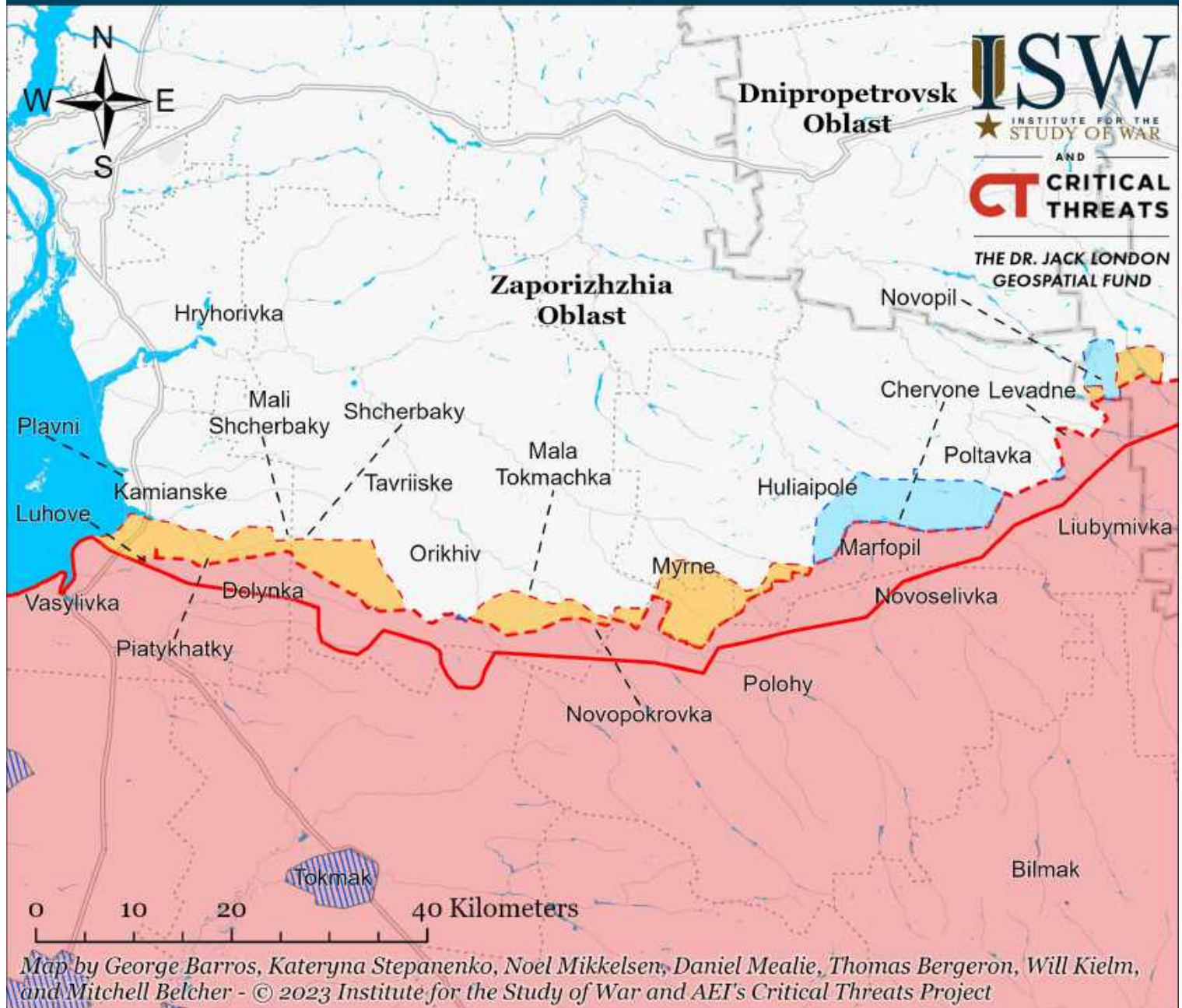


- Significant Fighting in the past 24 Hours
- Assessed Russian-controlled Ukrainian Territory
- Claimed Ukrainian Counteroffensives
- - - Assessed Russian Advances in Ukraine\*
- Claimed Russian Control over Ukrainian Territory
- ▨ Reported Ukrainian Partisan Warfare

\* Assessed Russian advances are areas where ISW assesses Russian forces have operated in or launched attacks against but do not control.



# Assessed Control of Terrain Around Zaporizhzhia as of March 27, 2023, 3:00 PM ET



- Significant Fighting in the past 24 Hours
- Assessed Russian-controlled Ukrainian Territory
- ▨ Reported Ukrainian Partisan Warfare
- Russian-controlled Ukrainian Territory before February 24
- Claimed Russian Control over Ukrainian Territory
- - - Assessed Russian Advances in Ukraine\*
- Claimed Ukrainian Counteroffensives

\* Assessed Russian advances are areas where ISW assesses Russian forces have operated in or launched attacks against but do not control.



# Assessed Control of Terrain Around Kherson and Mykolaiv as of March 27, 2023, 3:00 PM ET



\* Assessed Russian advances are areas where ISW assesses Russian forces have operated in or launched attacks against but do not control.

# Assessed Control of Terrain in Ukraine and Main Russian Maneuver Axes as of March 26, 2023, 3:00 PM ET



Map by George Barros, Kateryna Stepanenko, Noel Mikkelsen, Daniel Mealie, Thomas Bergeron, Will Kielm, and Mitchell Belcher - © 2023 Institute for the Study of War and AEI's Critical Threats Project

\* Assessed Russian advances are areas where ISW assesses Russian forces have operated in or launched attacks against but do not control.



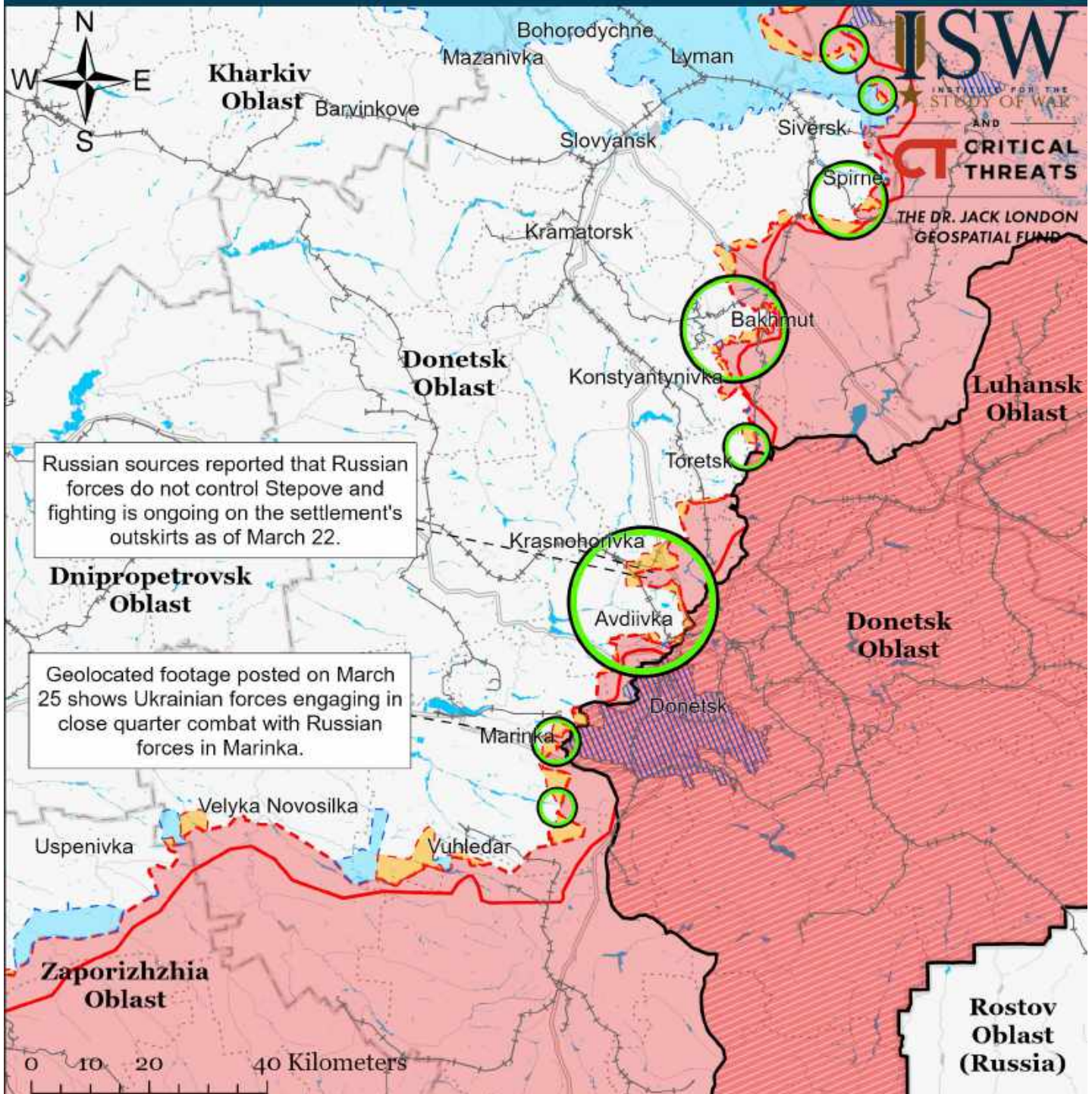
# Assessed Control of Terrain Around Kherson and Mykolaiv as of March 26, 2023, 3:00 PM ET



\* Assessed Russian advances are areas where ISW assesses Russian forces have operated in or launched attacks against but do not control.



# Assessed Control of Terrain Around Donetsk as of March 26, 2023, 3:00 PM ET



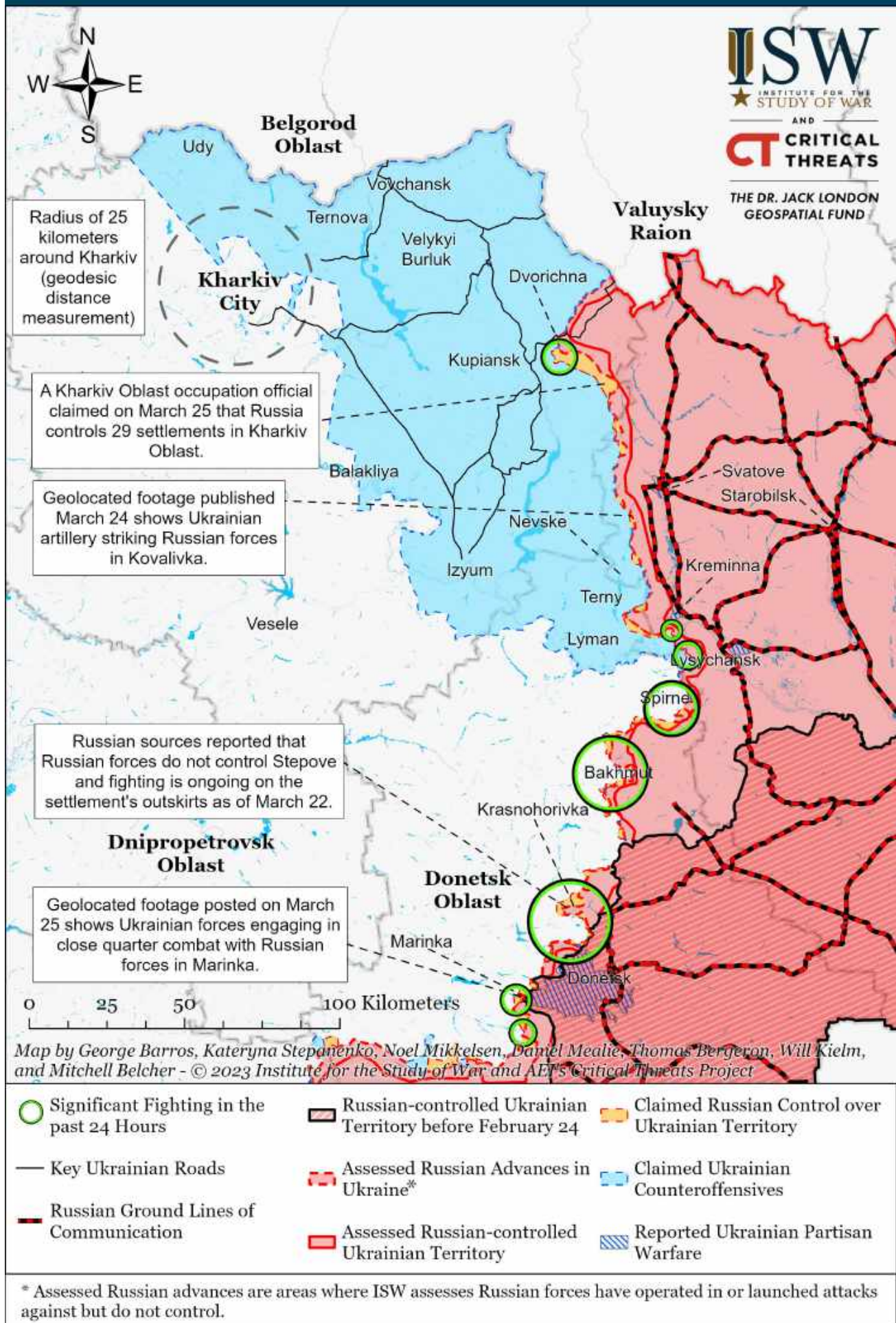
Map by George Barros, Kateryna Stepanenko, Noel Mikkelsen, Daniel Mealie, Thomas Bergeron, Will Kiern, and Mitchell Belcher - © 2023 Institute for the Study of War and AET's Critical Threats Project

- |   |  |                                     |
|---|--|-------------------------------------|
| Significant Fighting in the past 24 Hours                 | Assessed Russian-controlled Ukrainian Territory  | Major Railroads                     |
| Russian-controlled Ukrainian Territory before February 24 | Claimed Russian Control over Ukrainian Territory | Reported Ukrainian Partisan Warfare |
| Assessed Russian Advances in Ukraine*                     | Claimed Ukrainian Counteroffensives              |                                     |

\* Assessed Russian advances are areas where ISW assesses Russian forces have operated in or launched attacks against but do not control.

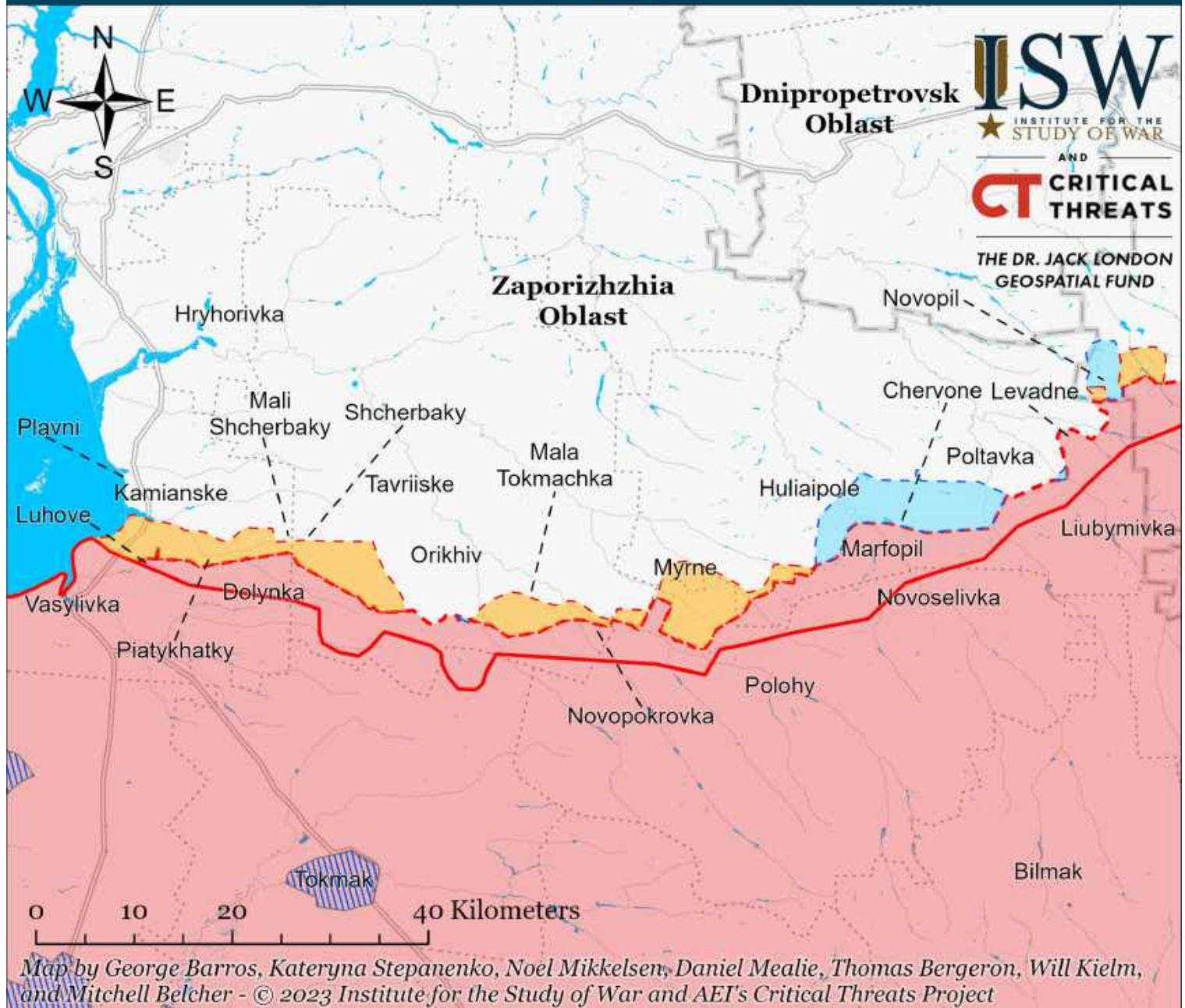


# Assessed Control of Terrain Around Kharkiv as of March 26, 2023, 3:00 PM ET





# Assessed Control of Terrain Around Zaporizhzhia as of March 26, 2023, 3:00 PM ET

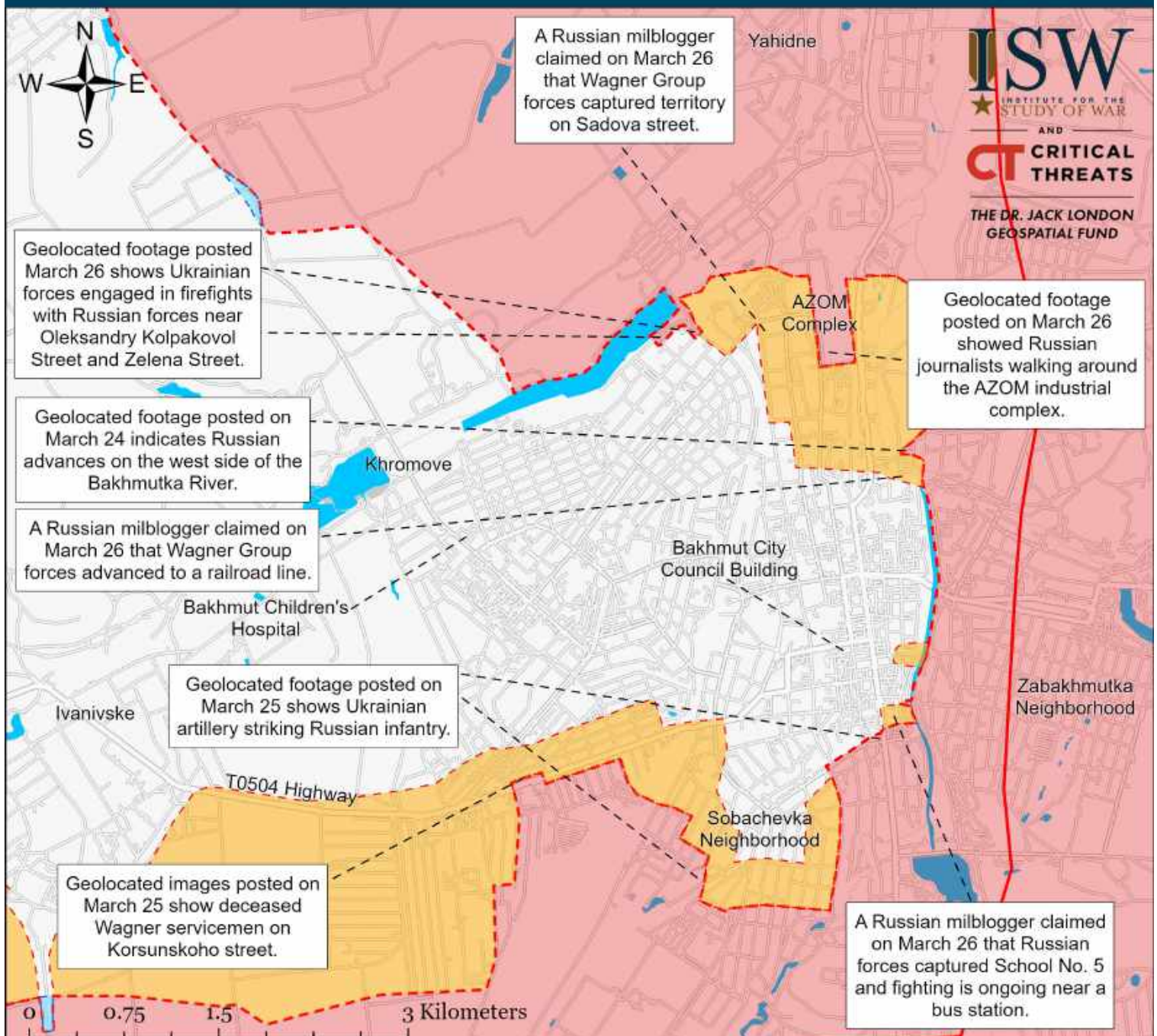


- Significant Fighting in the past 24 Hours
- Assessed Russian-controlled Ukrainian Territory
- Reported Ukrainian Partisan Warfare
- Russian-controlled Ukrainian Territory before February 24
- Claimed Russian Control over Ukrainian Territory
- Assessed Russian Advances in Ukraine\*
- Claimed Ukrainian Counteroffensives

\* Assessed Russian advances are areas where ISW assesses Russian forces have operated in or launched attacks against but do not control.



# Assessed Control of Terrain in Bakhmut as of March 26, 2023, 3:00 PM ET



- Significant Fighting in the past 24 Hours
- ▬ Assessed Russian-controlled Ukrainian Territory
- ▬ Claimed Ukrainian Counteroffensives
- - - Assessed Russian Advances in Ukraine\*
- ▬ Claimed Russian Control over Ukrainian Territory
- ▨ Reported Ukrainian Partisan Warfare

\* Assessed Russian advances are areas where ISW assesses Russian forces have operated in or launched attacks against but do not control.



# Assessed Control of Terrain in Ukraine and Main Russian Maneuver Axes as of March 25, 2023, 3:00 PM ET

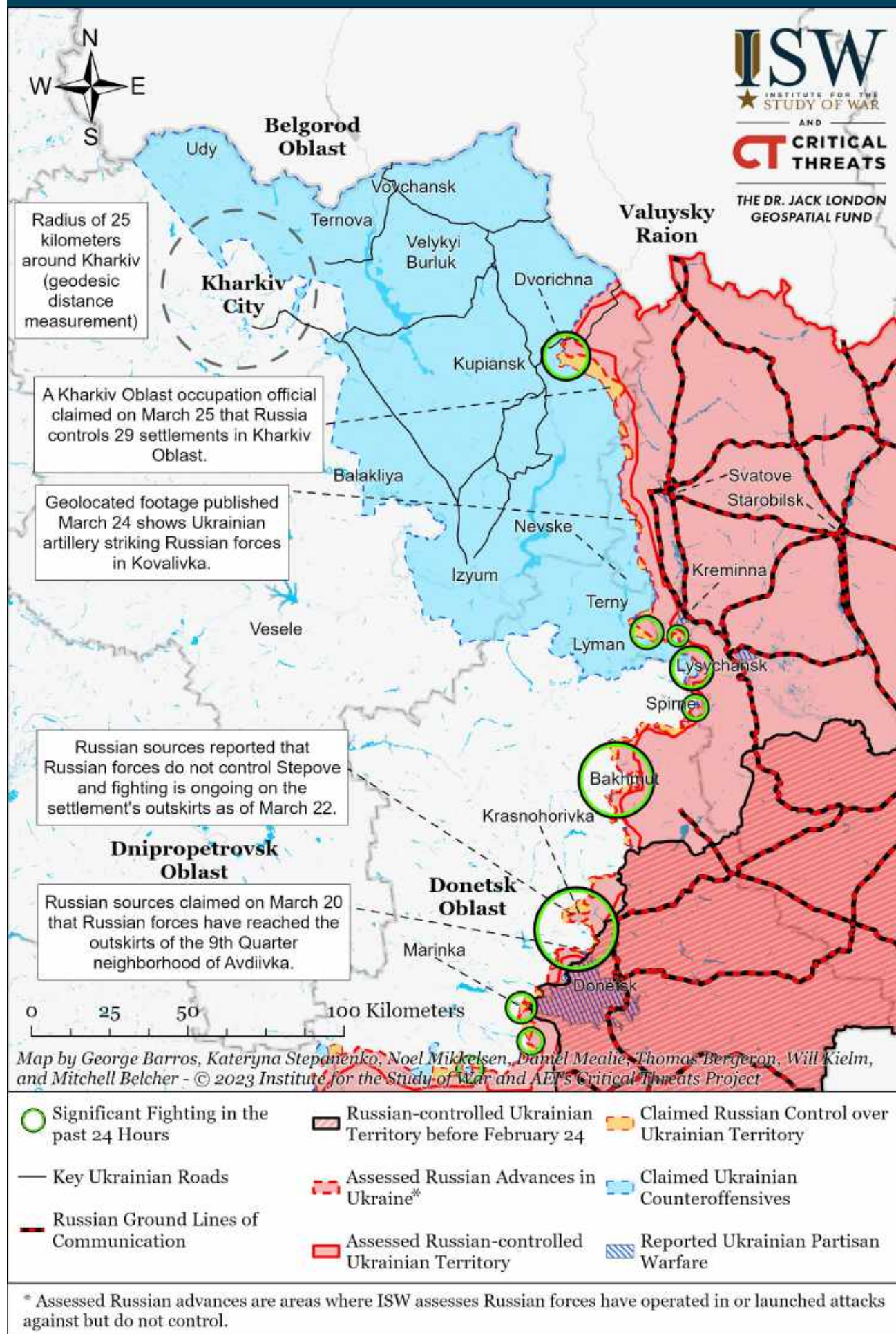


Map by George Barros, Kateryna Stepanenko, Noel Mikkelsen, Daniel Mealie, Thomas Bergeron, Will Kielm, and Mitchell Belcher - © 2023 Institute for the Study of War and AEI's Critical Threats Project

\* Assessed Russian advances are areas where ISW assesses Russian forces have operated in or launched attacks against but do not control.

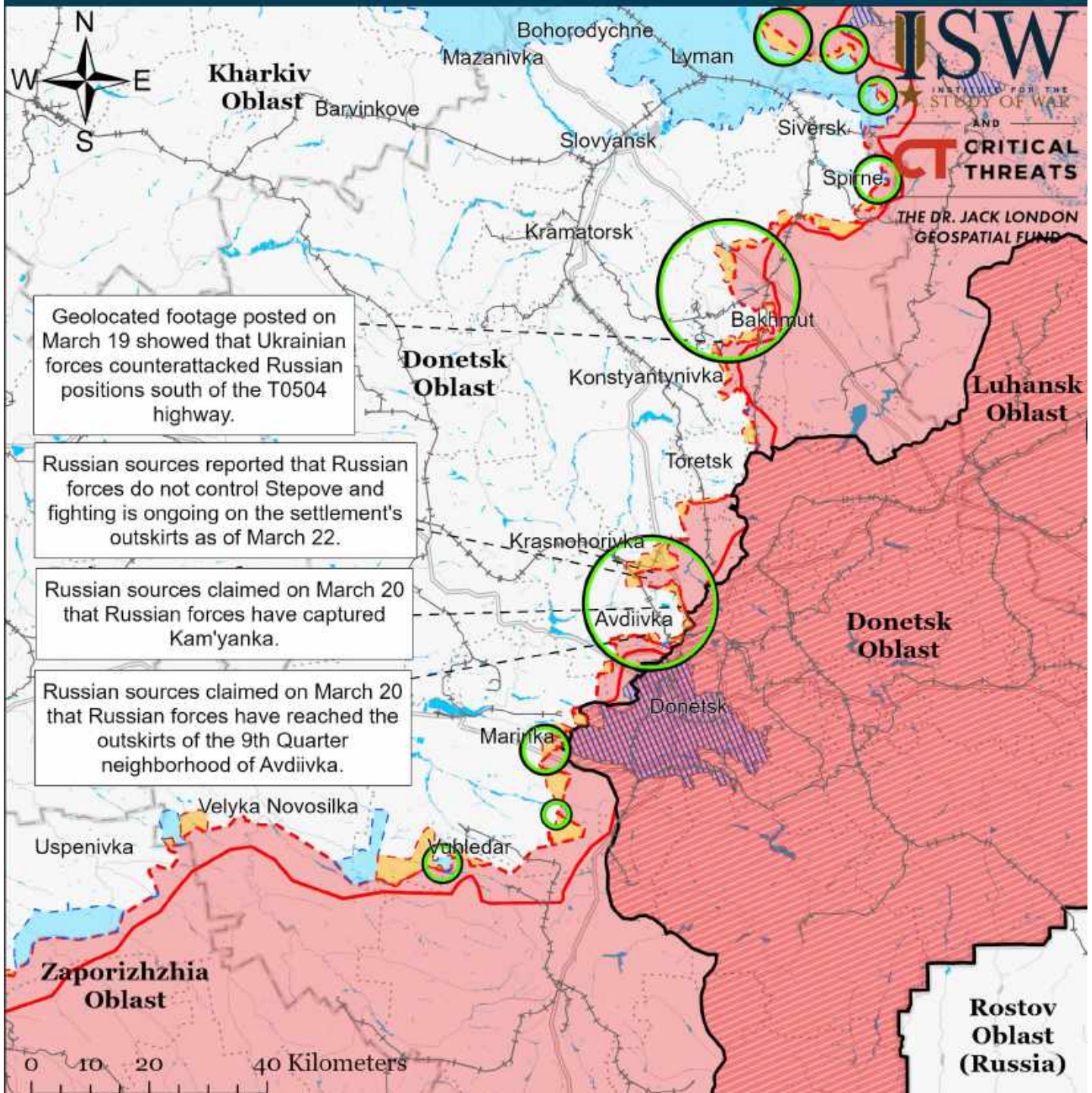


# Assessed Control of Terrain Around Kharkiv as of March 25, 2023, 3:00 PM ET





# Assessed Control of Terrain Around Donetsk as of March 25, 2023, 3:00 PM ET

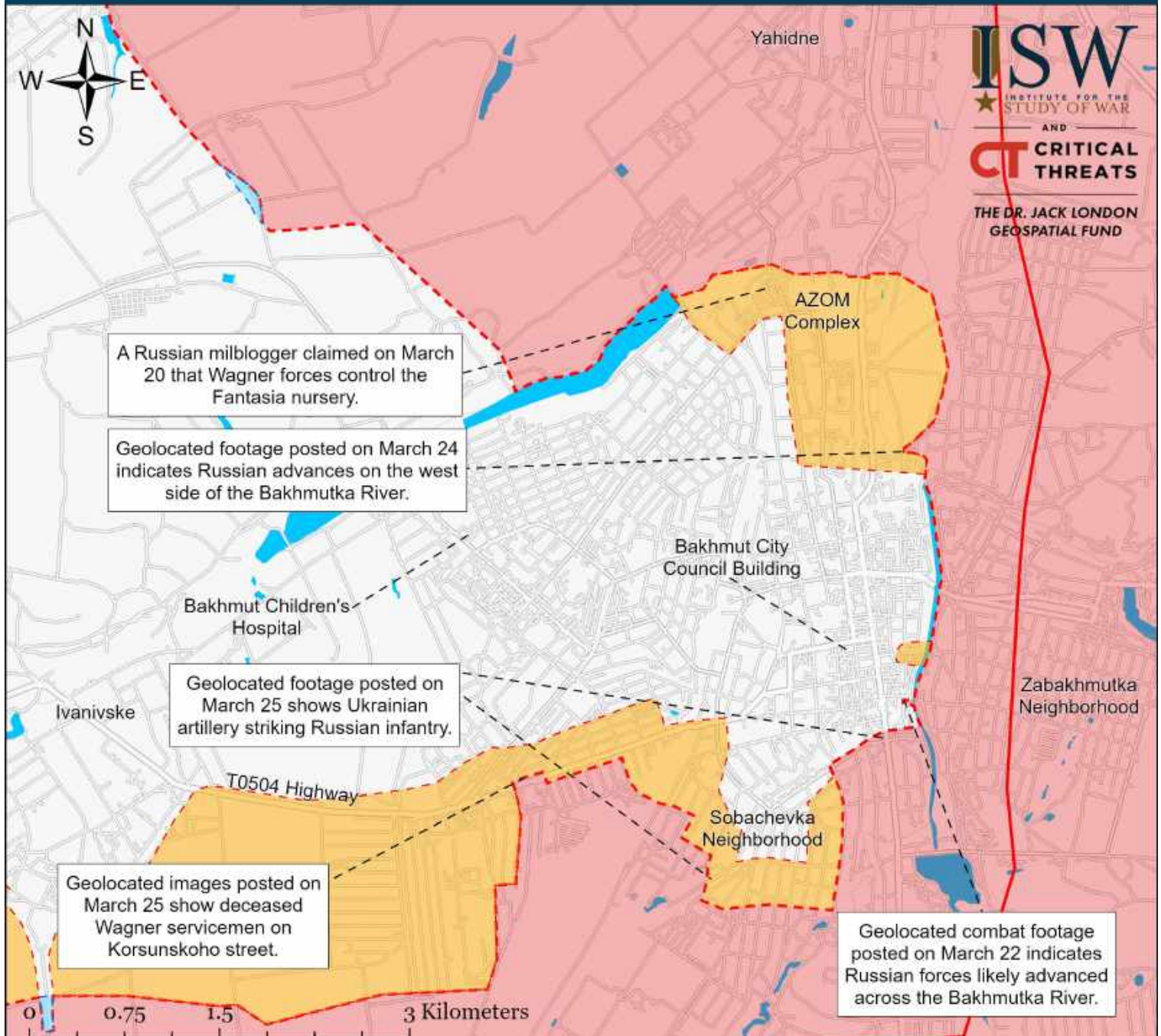


- Significant Fighting in the past 24 Hours
- Russian-controlled Ukrainian Territory before February 24
- Assessed Russian Advances in Ukraine\*
- Assessed Russian-controlled Ukrainian Territory
- Claimed Russian Control over Ukrainian Territory
- Claimed Ukrainian Counteroffensives
- Major Railroads
- Reported Ukrainian Partisan Warfare

\* Assessed Russian advances are areas where ISW assesses Russian forces have operated in or launched attacks against but do not control.



# Assessed Control of Terrain in Bakhmut as of March 25, 2023, 3:00 PM ET



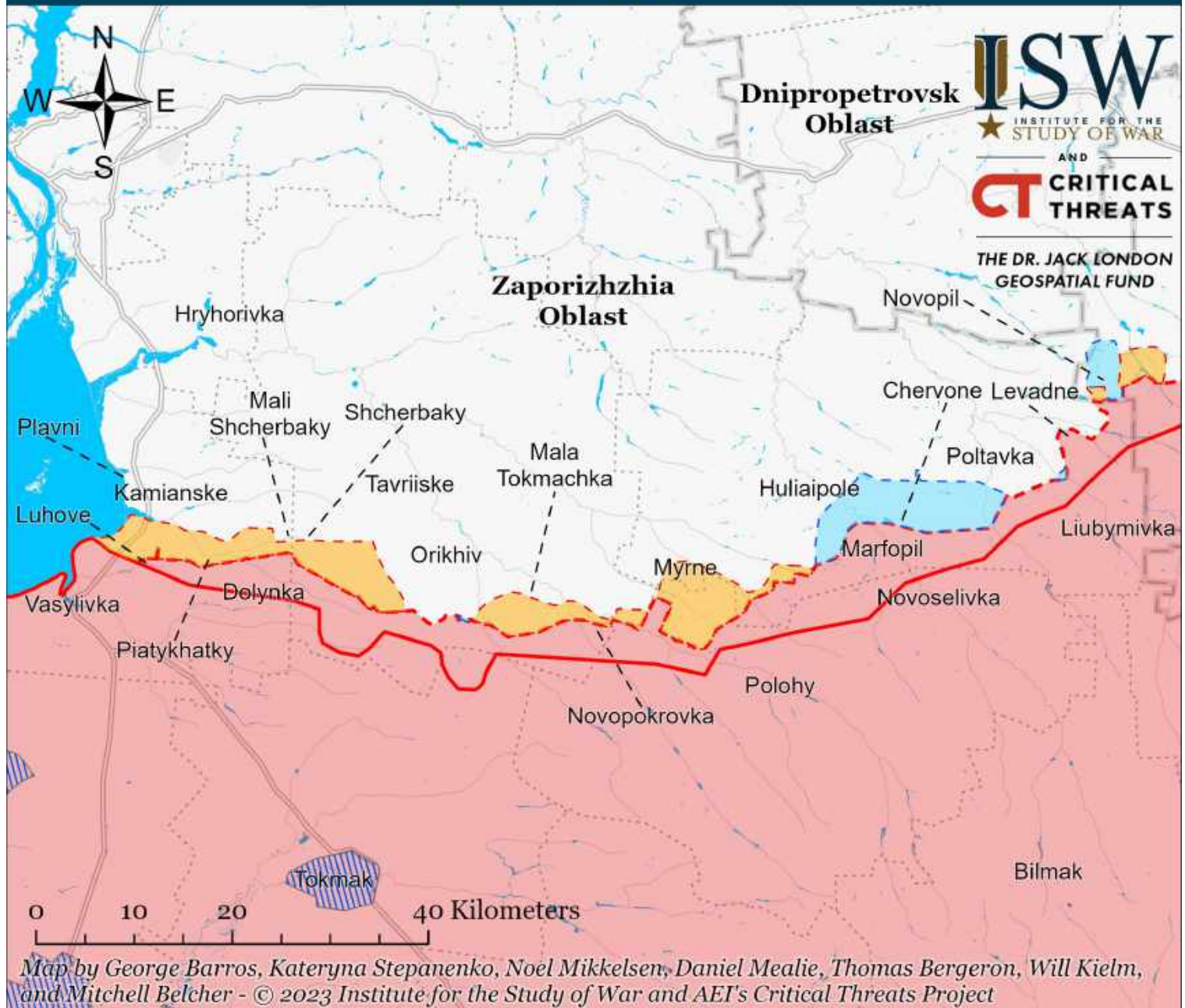
Map by George Barros, Kateryna Stepanenko, Noel Mikkelsen, Daniel Meatie, Thomas Bergeron, Will Kiern, and Mitchell Belcher  
© 2023 Institute for the Study of War and AEI's Critical Threats Project

- Significant Fighting in the past 24 Hours
- ▬ Assessed Russian-controlled Ukrainian Territory
- ▬ Claimed Ukrainian Counteroffensives
- - - Assessed Russian Advances in Ukraine\*
- ▬ Claimed Russian Control over Ukrainian Territory
- ▬ Reported Ukrainian Partisan Warfare

\* Assessed Russian advances are areas where ISW assesses Russian forces have operated in or launched attacks against but do not control.



# Assessed Control of Terrain Around Zaporizhzhia as of March 25, 2023, 3:00 PM ET



- Significant Fighting in the past 24 Hours
- Assessed Russian-controlled Ukrainian Territory
- ▨ Reported Ukrainian Partisan Warfare
- Russian-controlled Ukrainian Territory before February 24
- Claimed Russian Control over Ukrainian Territory
- - - Assessed Russian Advances in Ukraine\*
- Claimed Ukrainian Counteroffensives

\* Assessed Russian advances are areas where ISW assesses Russian forces have operated in or launched attacks against but do not control.



# Assessed Control of Terrain Around Kherson and Mykolaiv as of March 25, 2023, 3:00 PM ET



\* Assessed Russian advances are areas where ISW assesses Russian forces have operated in or launched attacks against but do not control.



# Assessed Control of Terrain in Ukraine and Main Russian Maneuver Axes as of March 24, 2023, 3:00 PM ET

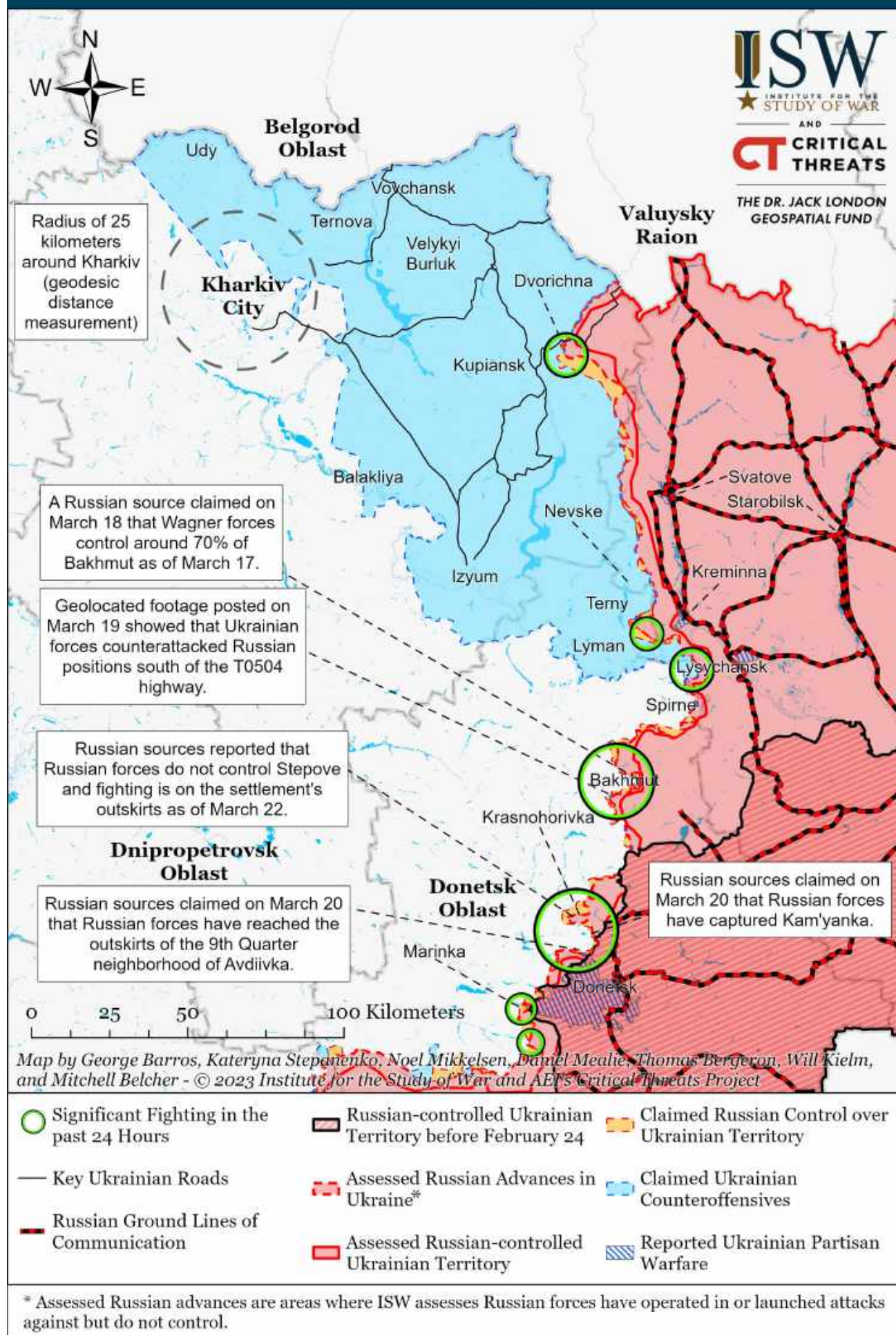


Map by George Barros, Kateryna Stepanenko, Noel Mikkelsen, Daniel Mealie, Thomas Bergeron, Will Kielm, and Mitchell Belcher - © 2023 Institute for the Study of War and AEI's Critical Threats Project

\* Assessed Russian advances are areas where ISW assesses Russian forces have operated in or launched attacks against but do not control.

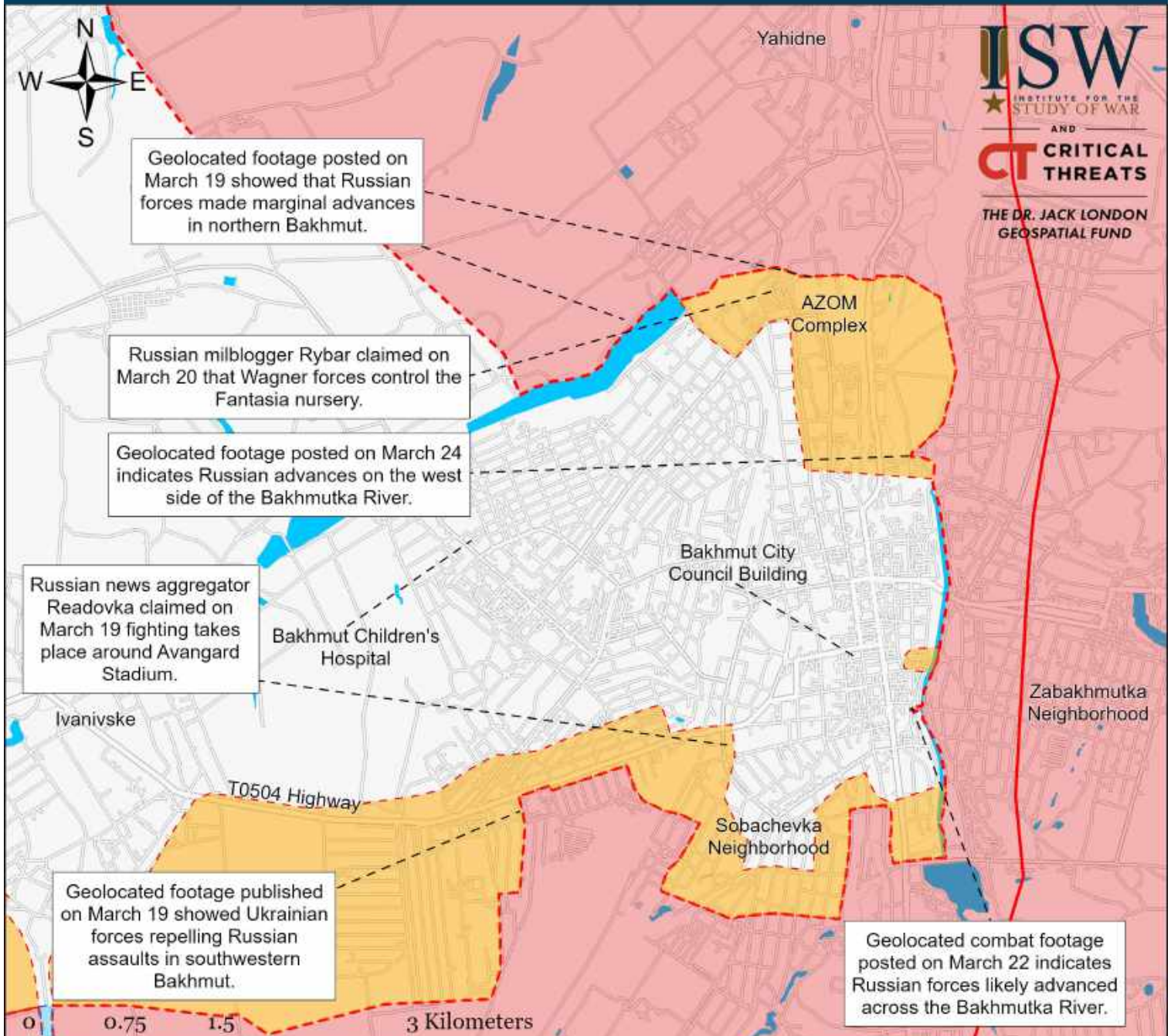


# Assessed Control of Terrain Around Kharkiv as of March 24, 2023, 3:00 PM ET





# Assessed Control of Terrain in Bakhmut as of March 24, 2023, 3:00 PM ET

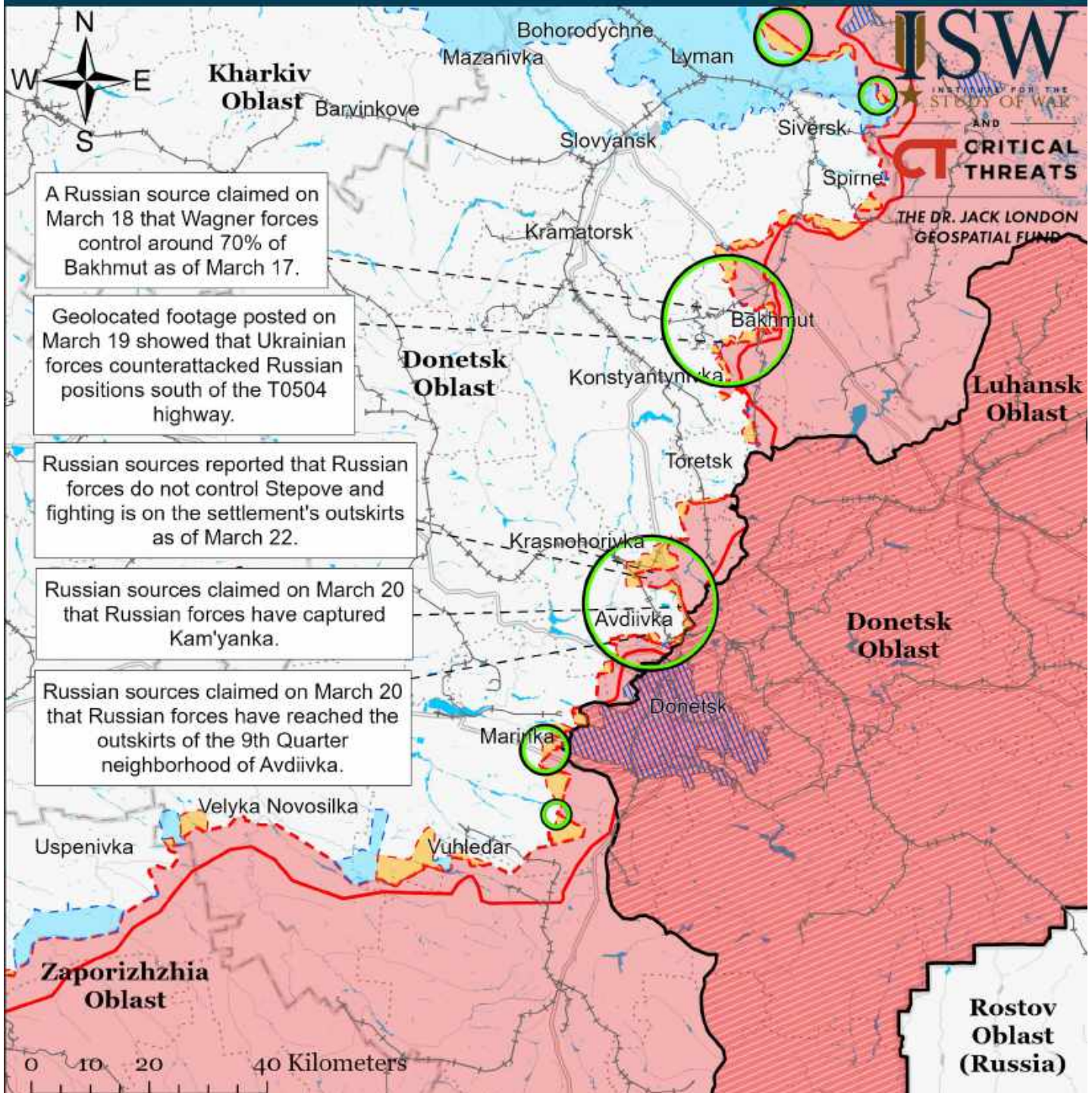


- Significant Fighting in the past 24 Hours
- ▬ Assessed Russian-controlled Ukrainian Territory
- ▬ Claimed Ukrainian Counteroffensives
- - - Assessed Russian Advances in Ukraine \*
- ▬ Claimed Russian Control over Ukrainian Territory
- ▨ Reported Ukrainian Partisan Warfare

\* Assessed Russian advances are areas where ISW assesses Russian forces have operated in or launched attacks against but do not control.



# Assessed Control of Terrain Around Donetsk as of March 24, 2023, 3:00 PM ET



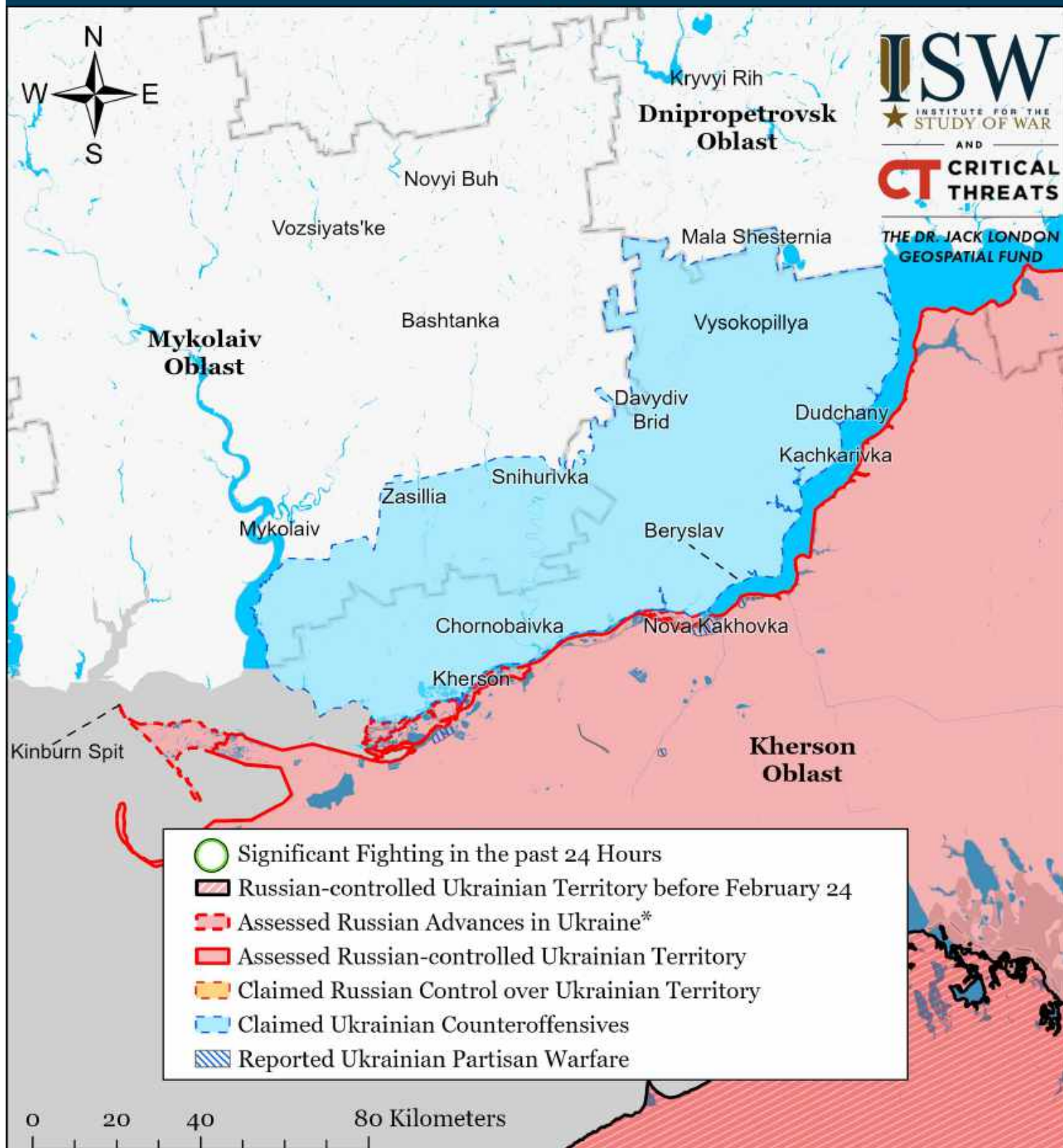
Map by George Barros, Kateryna Stepanenko, Noel Mikkelsen, Daniel Mealie, Thomas Bergeron, Will Kiern, and Mitchell Belcher - © 2023 Institute for the Study of War and AEI's Critical Threats Project

- Significant Fighting in the past 24 Hours
- Assessed Russian-controlled Ukrainian Territory
- Major Railroads
- Russian-controlled Ukrainian Territory before February 24
- Claimed Russian Control over Ukrainian Territory
- Reported Ukrainian Partisan Warfare
- - Assessed Russian Advances in Ukraine\*
- Claimed Ukrainian Counteroffensives

\* Assessed Russian advances are areas where ISW assesses Russian forces have operated in or launched attacks against but do not control.



# Assessed Control of Terrain Around Kherson and Mykolaiv as of March 24, 2023, 3:00 PM ET

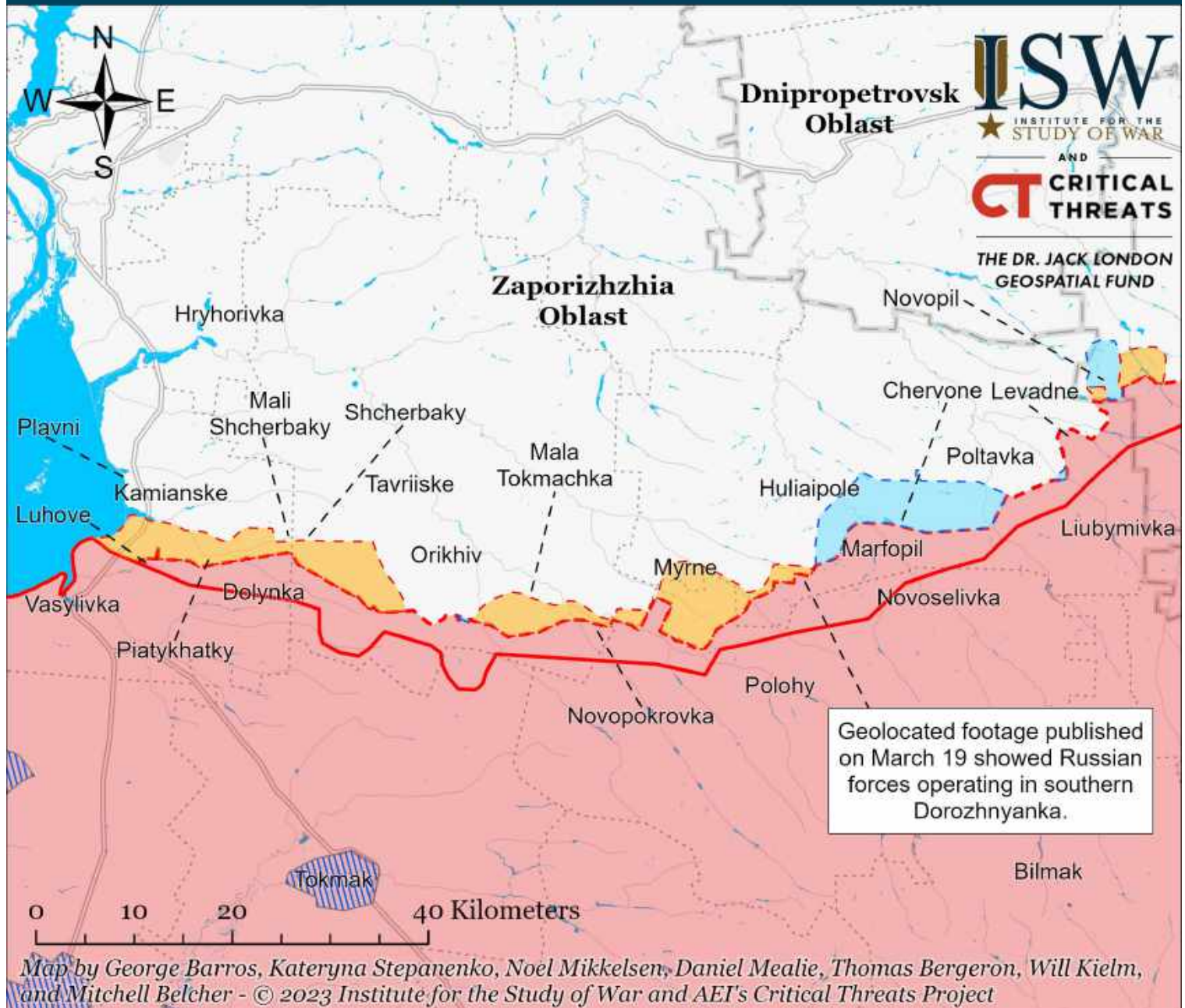


Map by George Barros, Kateryna Stepanenko, Noel Mikkelsen, Daniel Mealie, Thomas Bergeron, Will Kielm, and Mitchell Belcher - © 2023 Institute for the Study of War and AEI's Critical Threats Project

\* Assessed Russian advances are areas where ISW assesses Russian forces have operated in or launched attacks against but do not control.



# Assessed Control of Terrain Around Zaporizhzhia as of March 24, 2023, 3:00 PM ET



- Significant Fighting in the past 24 Hours
- Assessed Russian-controlled Ukrainian Territory
- ▨ Reported Ukrainian Partisan Warfare
- Russian-controlled Ukrainian Territory before February 24
- Claimed Russian Control over Ukrainian Territory
- - - Assessed Russian Advances in Ukraine\*
- Claimed Ukrainian Counteroffensives

\* Assessed Russian advances are areas where ISW assesses Russian forces have operated in or launched attacks against but do not control.



# Assessed Control of Terrain in Ukraine and Main Russian Maneuver Axes as of March 23, 2023, 3:00 PM ET

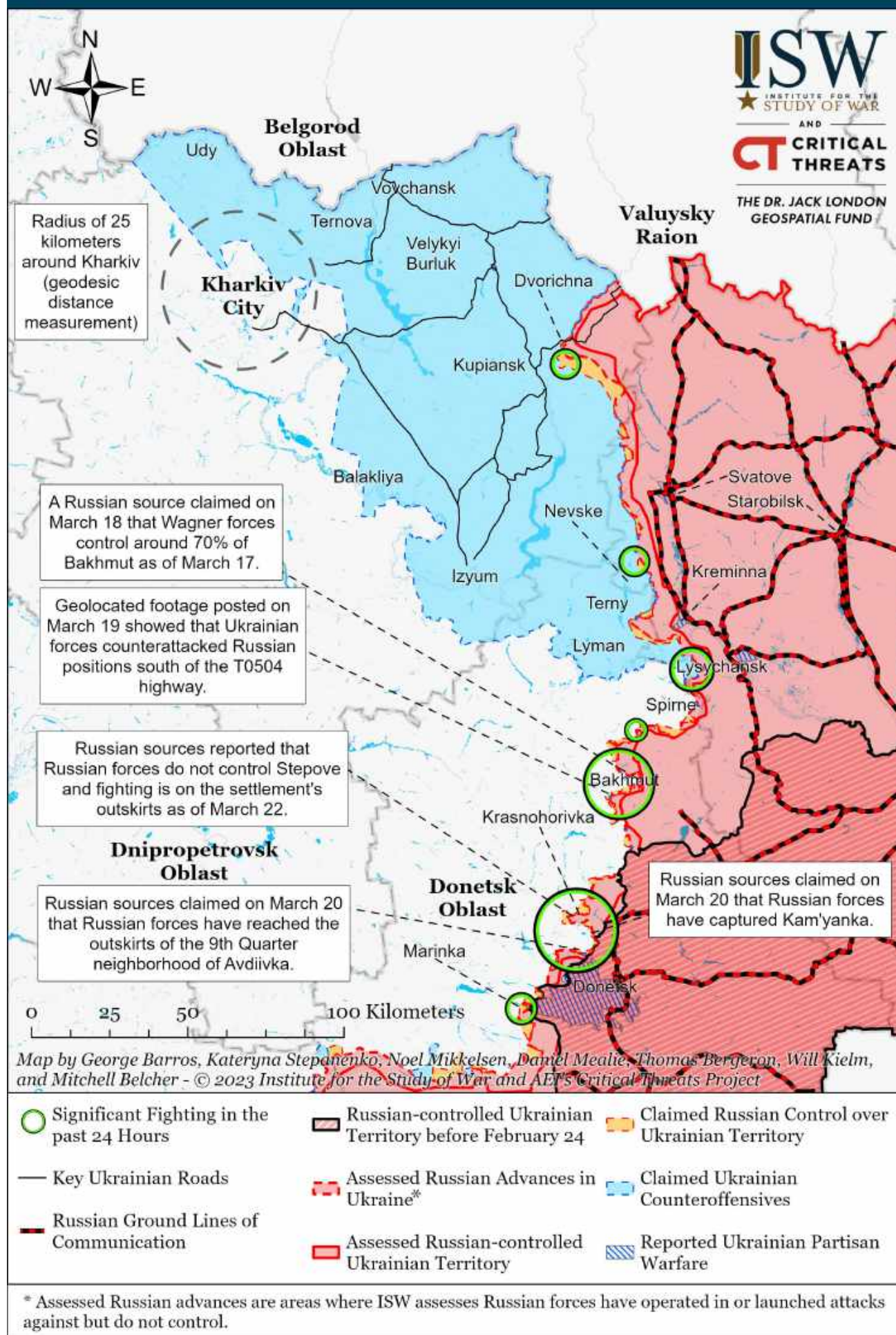


Map by George Barros, Kateryna Stepanenko, Noel Mikkelsen, Daniel Mealie, Thomas Bergeron, Will Kielm, and Mitchell Belcher - © 2023 Institute for the Study of War and AEI's Critical Threats Project

\* Assessed Russian advances are areas where ISW assesses Russian forces have operated in or launched attacks against but do not control.

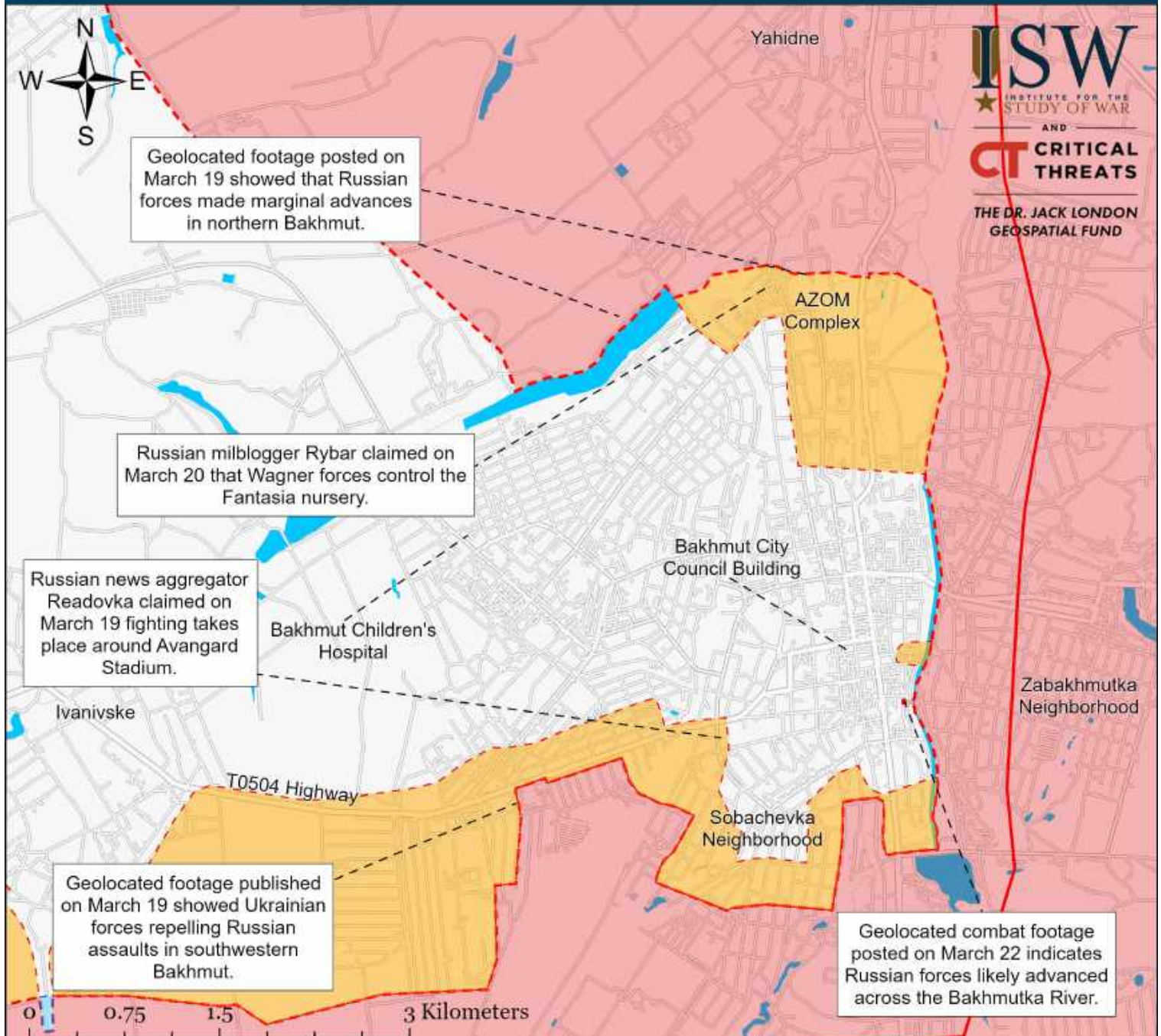


# Assessed Control of Terrain Around Kharkiv as of March 23, 2023, 3:00 PM ET





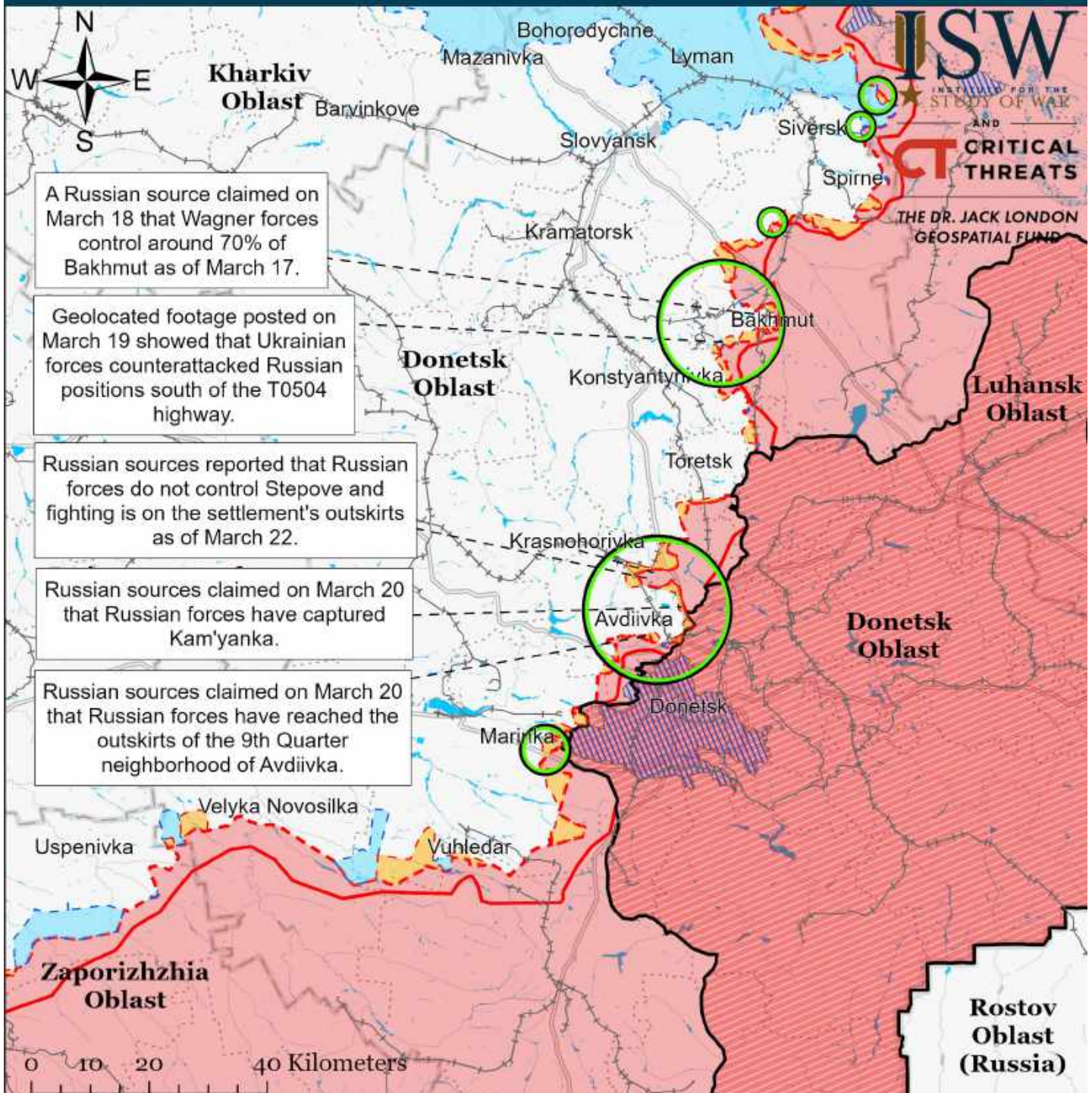
# Assessed Control of Terrain in Bakhmut as of March 23, 2023, 3:00 PM ET



\* Assessed Russian advances are areas where ISW assesses Russian forces have operated in or launched attacks against but do not control.



# Assessed Control of Terrain Around Donetsk as of March 23, 2023, 3:00 PM ET



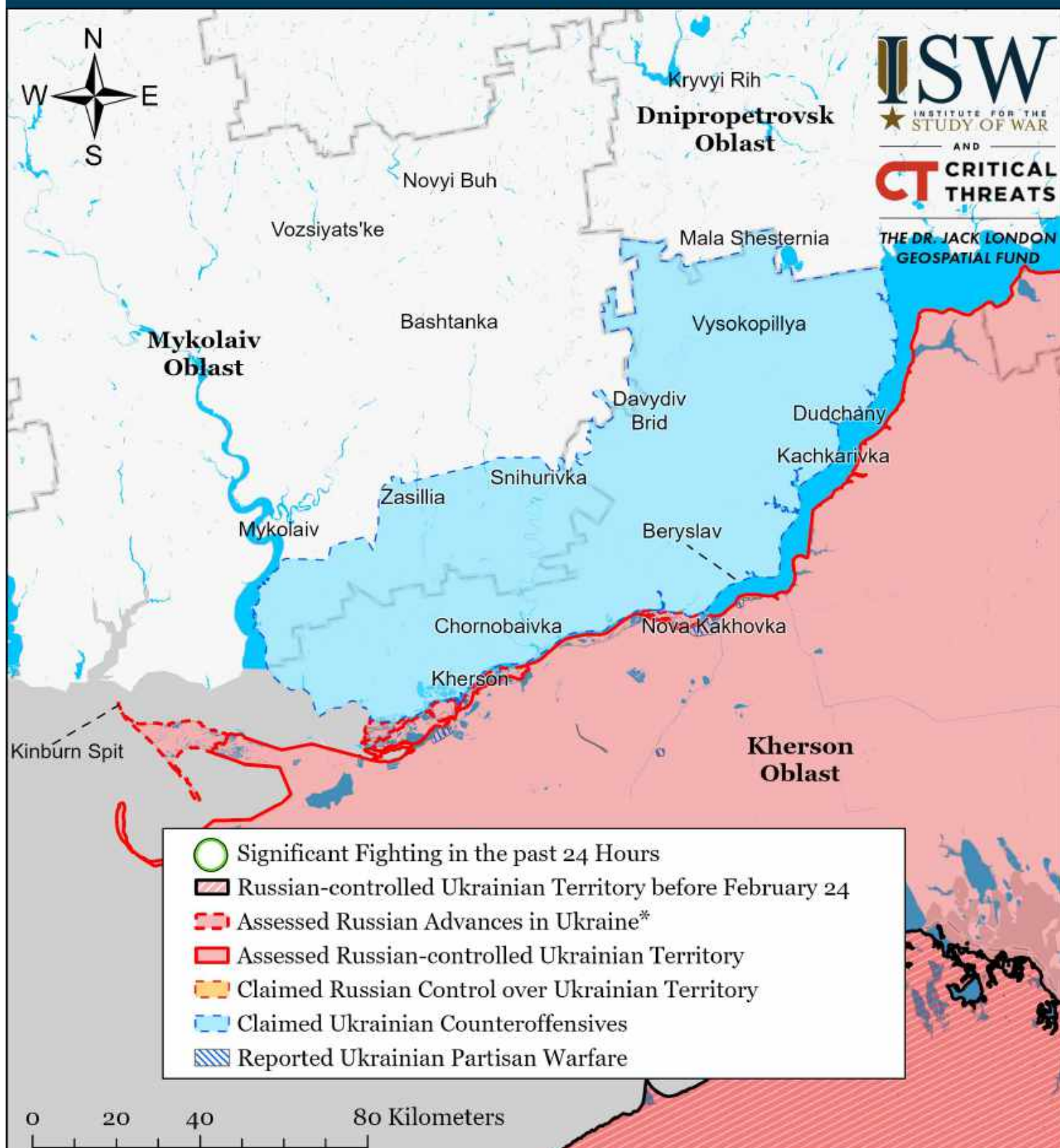
Map by George Barros, Kateryna Stepanenko, Noel Mikkelsen, Daniel Mealie, Thomas Bergeron, Will Kiern, and Mitchell Belcher - © 2023 Institute for the Study of War and AEI's Critical Threats Project

- |   |  |                                     |
|---|--|-------------------------------------|
| Significant Fighting in the past 24 Hours                 | Assessed Russian-controlled Ukrainian Territory  | Major Railroads                     |
| Russian-controlled Ukrainian Territory before February 24 | Claimed Russian Control over Ukrainian Territory | Reported Ukrainian Partisan Warfare |
| Assessed Russian Advances in Ukraine*                     | Claimed Ukrainian Counteroffensives              |                                     |

\* Assessed Russian advances are areas where ISW assesses Russian forces have operated in or launched attacks against but do not control.



# Assessed Control of Terrain Around Kherson and Mykolaiv as of March 23, 2023, 3:00 PM ET

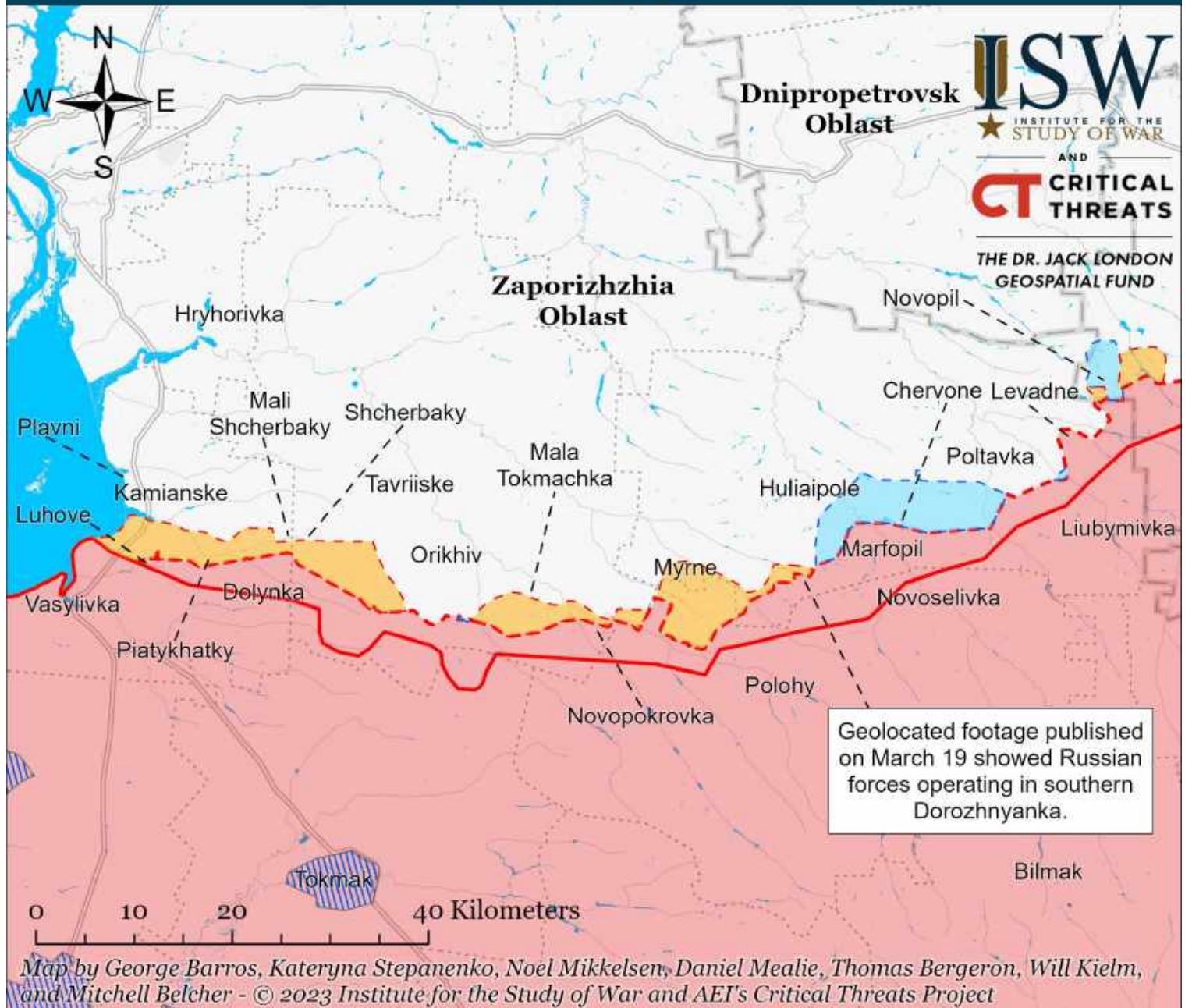


Map by George Barros, Kateryna Stepanenko, Noel Mikkelsen, Daniel Mealie, Thomas Bergeron, Will Kielm, and Mitchell Belcher - © 2023 Institute for the Study of War and AEI's Critical Threats Project

\* Assessed Russian advances are areas where ISW assesses Russian forces have operated in or launched attacks against but do not control.



# Assessed Control of Terrain Around Zaporizhia as of March 23, 2023, 3:00 PM ET



- Significant Fighting in the past 24 Hours
- Assessed Russian-controlled Ukrainian Territory
- Reported Ukrainian Partisan Warfare
- Russian-controlled Ukrainian Territory before February 24
- Claimed Russian Control over Ukrainian Territory
- Assessed Russian Advances in Ukraine\*
- Claimed Ukrainian Counteroffensives

\* Assessed Russian advances are areas where ISW assesses Russian forces have operated in or launched attacks against but do not control.



# Assessed Control of Terrain in Ukraine and Main Russian Maneuver Axes as of March 22, 2023, 3:00 PM ET

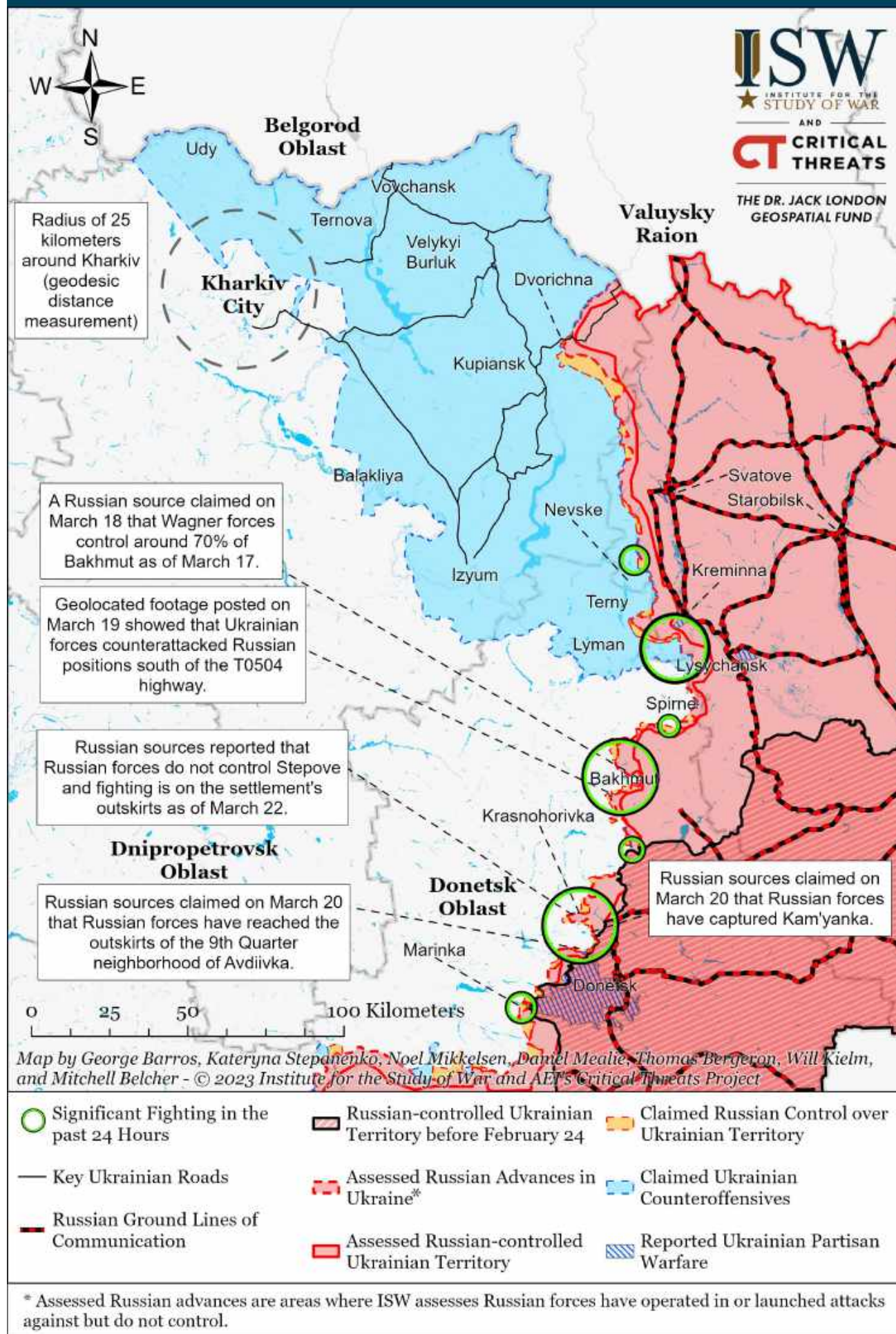


Map by George Barros, Kateryna Stepanenko, Noel Mikkelsen, Daniel Mealie, Thomas Bergeron, Will Kielm, and Mitchell Belcher - © 2023 Institute for the Study of War and AEI's Critical Threats Project

\* Assessed Russian advances are areas where ISW assesses Russian forces have operated in or launched attacks against but do not control.

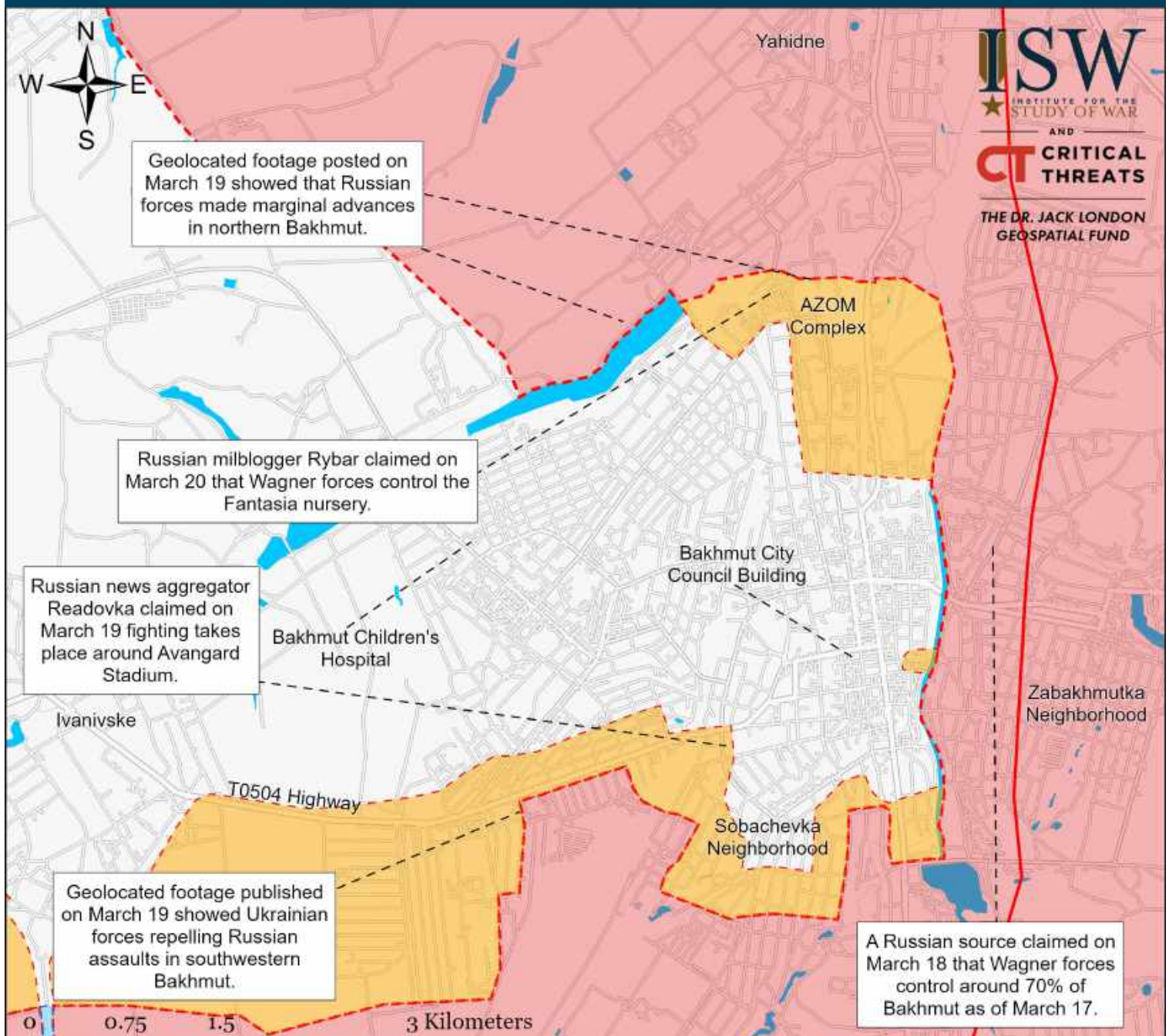


# Assessed Control of Terrain Around Kharkiv as of March 22, 2023, 3:00 PM ET





# Assessed Control of Terrain in Bakhmut as of March 22, 2023, 3:00 PM ET



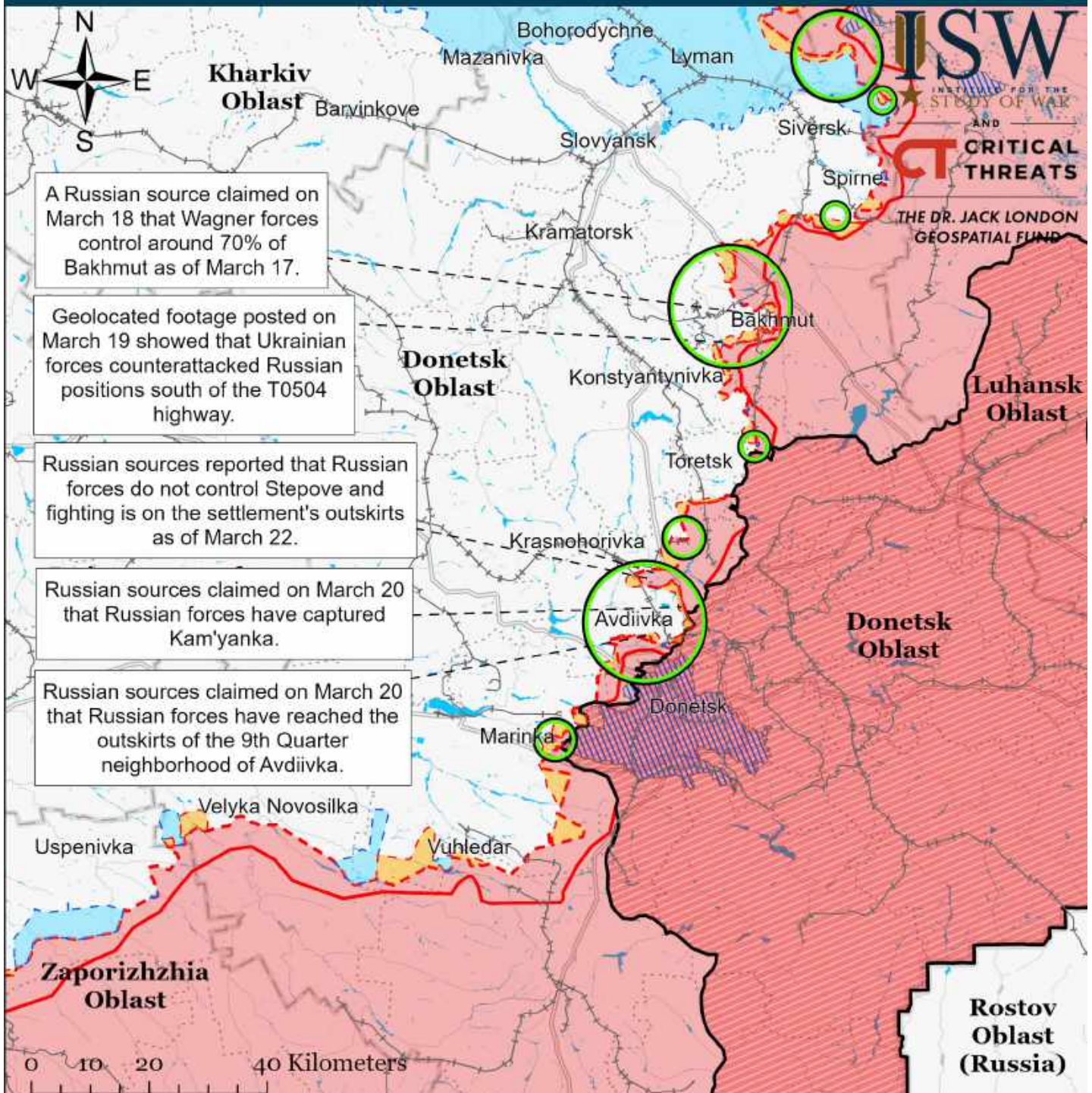
Map by George Barros, Kateryna Stepanenko, Noel Mikkelsen, Daniel Meatie, Thomas Bergeron, Will Kiehm, and Mitchell Belcher  
 © 2023 Institute for the Study of War and AEI's Critical Threats Project

- Significant Fighting in the past 24 Hours
- ▬ Assessed Russian-controlled Ukrainian Territory
- ▬ Claimed Ukrainian Counteroffensives
- - - Assessed Russian Advances in Ukraine \*
- ▬ Claimed Russian Control over Ukrainian Territory
- ▬ Reported Ukrainian Partisan Warfare

\* Assessed Russian advances are areas where ISW assesses Russian forces have operated in or launched attacks against but do not control.



# Assessed Control of Terrain Around Donetsk as of March 22, 2023, 3:00 PM ET



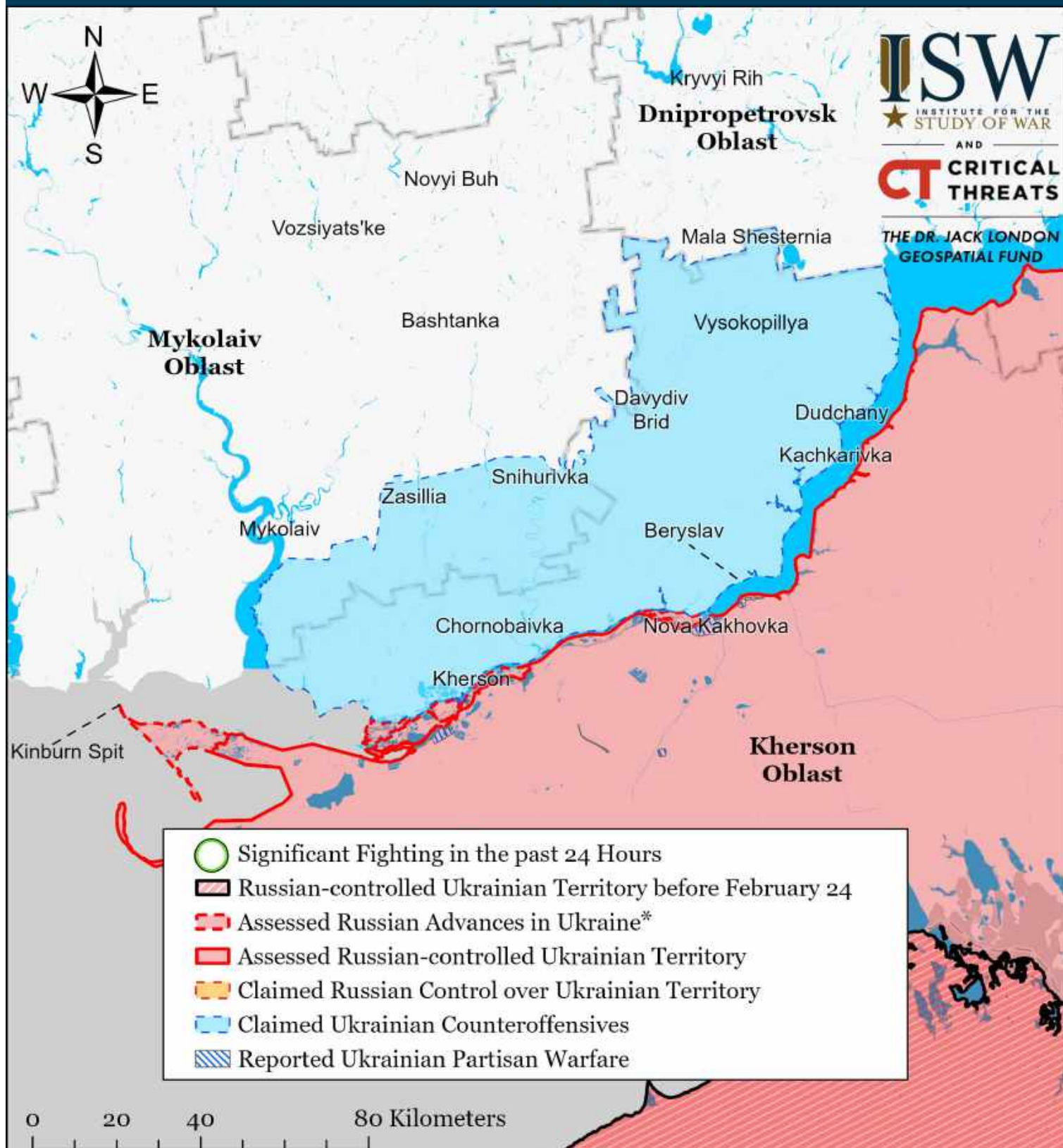
Map by George Barros, Kateryna Stepanenko, Noel Mikkelsen, Daniel Mealie, Thomas Bergeron, Will Kiern, and Mitchell Belcher - © 2023 Institute for the Study of War and AEI's Critical Threats Project

- |   |  |                                     |
|---|--|-------------------------------------|
| Significant Fighting in the past 24 Hours                 | Assessed Russian-controlled Ukrainian Territory  | Major Railroads                     |
| Russian-controlled Ukrainian Territory before February 24 | Claimed Russian Control over Ukrainian Territory | Reported Ukrainian Partisan Warfare |
| Assessed Russian Advances in Ukraine*                     | Claimed Ukrainian Counteroffensives              |                                     |

\* Assessed Russian advances are areas where ISW assesses Russian forces have operated in or launched attacks against but do not control.



# Assessed Control of Terrain Around Kherson and Mykolaiv as of March 22, 2023, 3:00 PM ET

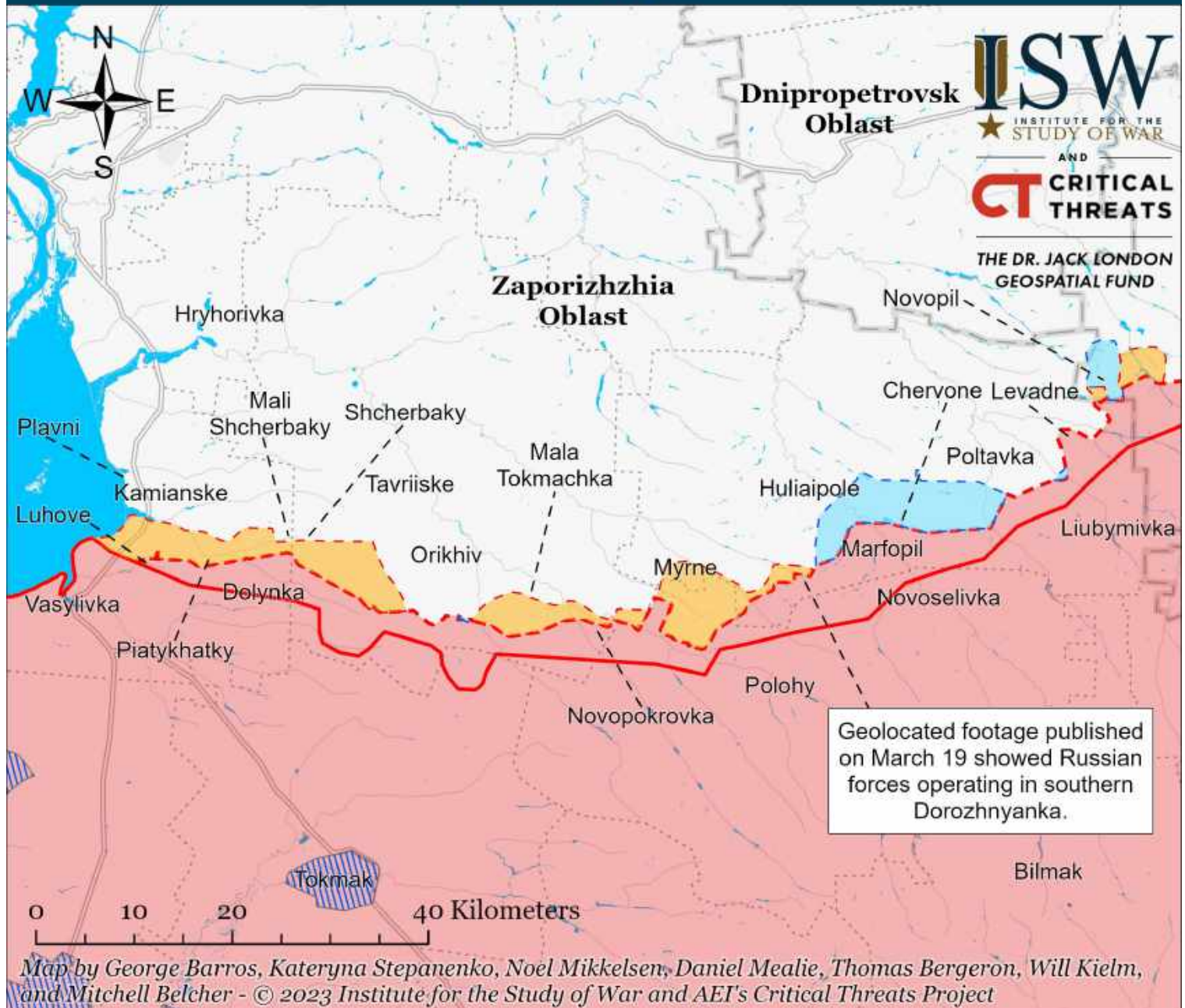


Map by George Barros, Kateryna Stepanenko, Noel Mikkelsen, Daniel Mealie, Thomas Bergeron, Will Kielm, and Mitchell Belcher - © 2023 Institute for the Study of War and AEI's Critical Threats Project

\* Assessed Russian advances are areas where ISW assesses Russian forces have operated in or launched attacks against but do not control.



# Assessed Control of Terrain Around Zaporizhzhia as of March 22, 2023, 3:00 PM ET



- Significant Fighting in the past 24 Hours
- Assessed Russian-controlled Ukrainian Territory
- ▨ Reported Ukrainian Partisan Warfare
- Russian-controlled Ukrainian Territory before February 24
- Claimed Russian Control over Ukrainian Territory
- - - Assessed Russian Advances in Ukraine\*
- Claimed Ukrainian Counteroffensives

\* Assessed Russian advances are areas where ISW assesses Russian forces have operated in or launched attacks against but do not control.



# Assessed Control of Terrain in Ukraine and Main Russian Maneuver Axes as of March 21, 2023, 3:00 PM ET

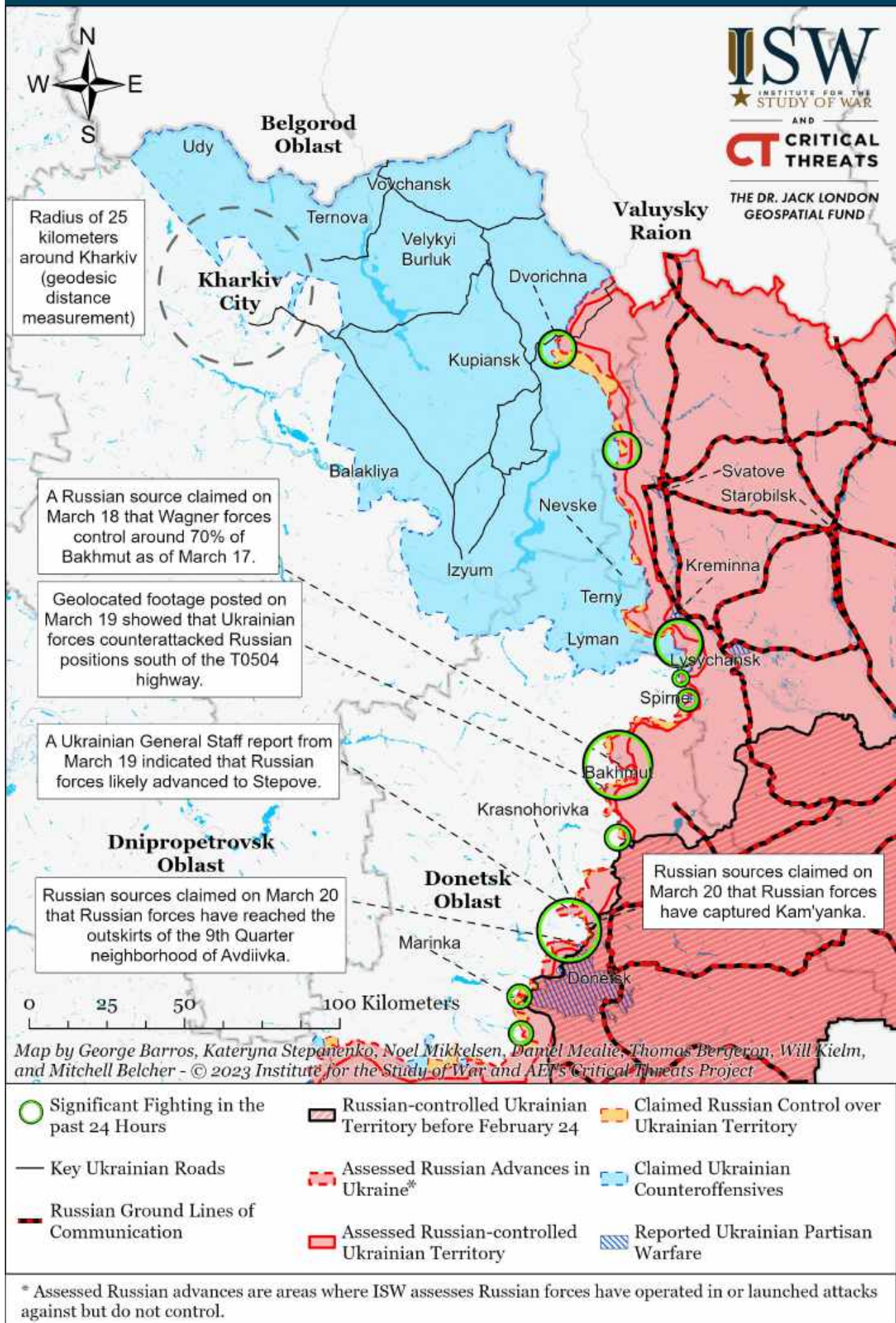


Map by George Barros, Kateryna Stepanenko, Noel Mikkelsen, Daniel Mealie, Thomas Bergeron, Will Kielm, and Mitchell Belcher - © 2023 Institute for the Study of War and AEI's Critical Threats Project

\* Assessed Russian advances are areas where ISW assesses Russian forces have operated in or launched attacks against but do not control.

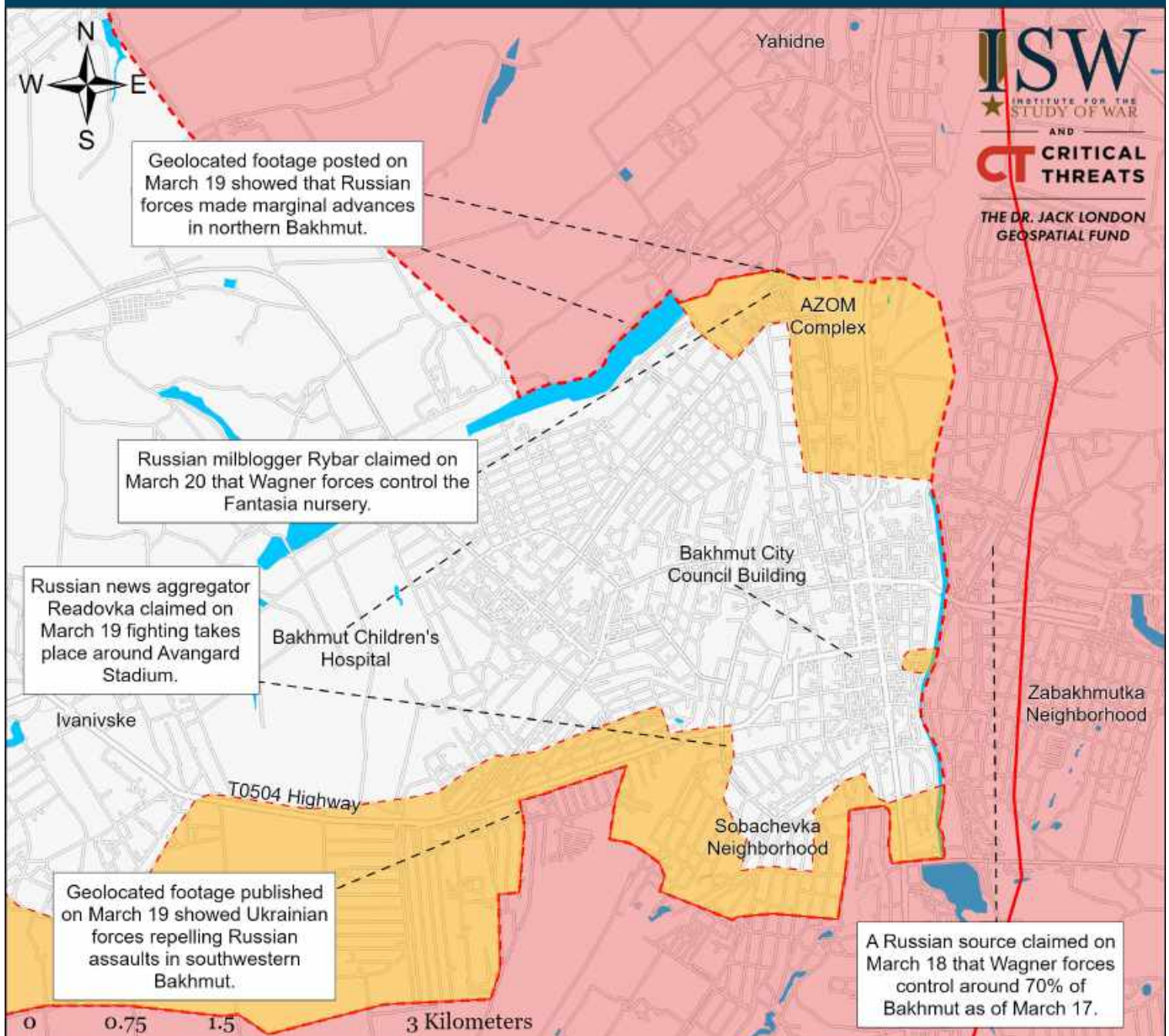


# Assessed Control of Terrain Around Kharkiv as of March 21, 2023, 3:00 PM ET





# Assessed Control of Terrain in Bakhmut as of March 21, 2023, 3:00 PM ET



**ISW**  
INSTITUTE FOR THE  
STUDY OF WAR  
AND  
**CT** CRITICAL  
THREATS  
THE DR. JACK LONDON  
GEOSPATIAL FUND

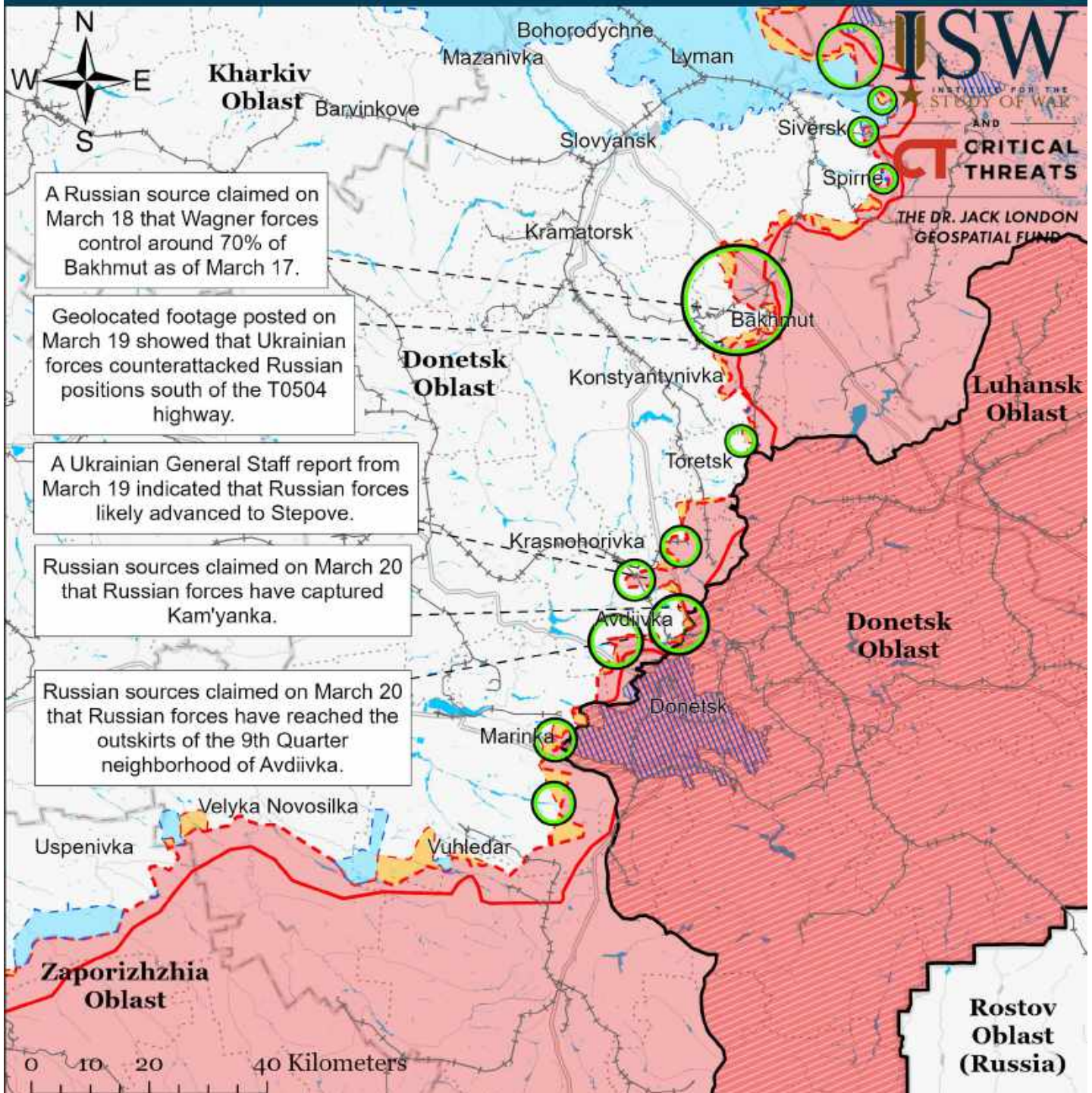
Map by George Barros, Kateryna Stepanenko, Noel Mikkelsen, Daniel Meatie, Thomas Bergeron, Will Kiehm, and Mitchell Belcher  
© 2023 Institute for the Study of War and AEI's Critical Threats Project

- Significant Fighting in the past 24 Hours
- Assessed Russian-controlled Ukrainian Territory
- Claimed Ukrainian Counteroffensives
- - - Assessed Russian Advances in Ukraine \*
- Claimed Russian Control over Ukrainian Territory
- ▨ Reported Ukrainian Partisan Warfare

\* Assessed Russian advances are areas where ISW assesses Russian forces have operated in or launched attacks against but do not control.



# Assessed Control of Terrain Around Donetsk as of March 21, 2023, 3:00 PM ET

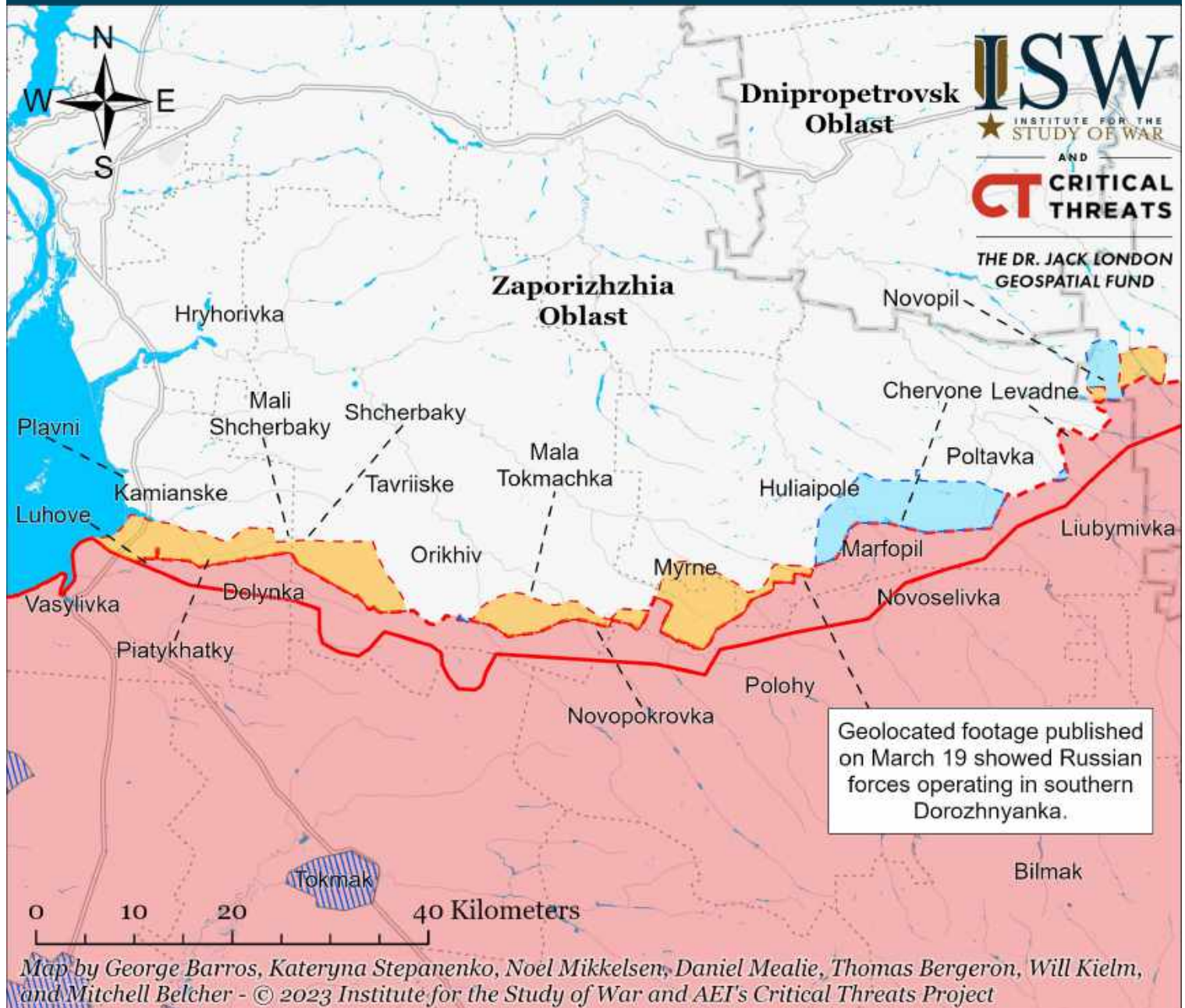


- Significant Fighting in the past 24 Hours
- Russian-controlled Ukrainian Territory before February 24
- Assessed Russian Advances in Ukraine\*
- Claimed Russian Control over Ukrainian Territory
- Claimed Ukrainian Counteroffensives
- Major Railroads
- Reported Ukrainian Partisan Warfare

\* Assessed Russian advances are areas where ISW assesses Russian forces have operated in or launched attacks against but do not control.



# Assessed Control of Terrain Around Zaporizhzhia as of March 21, 2023, 3:00 PM ET

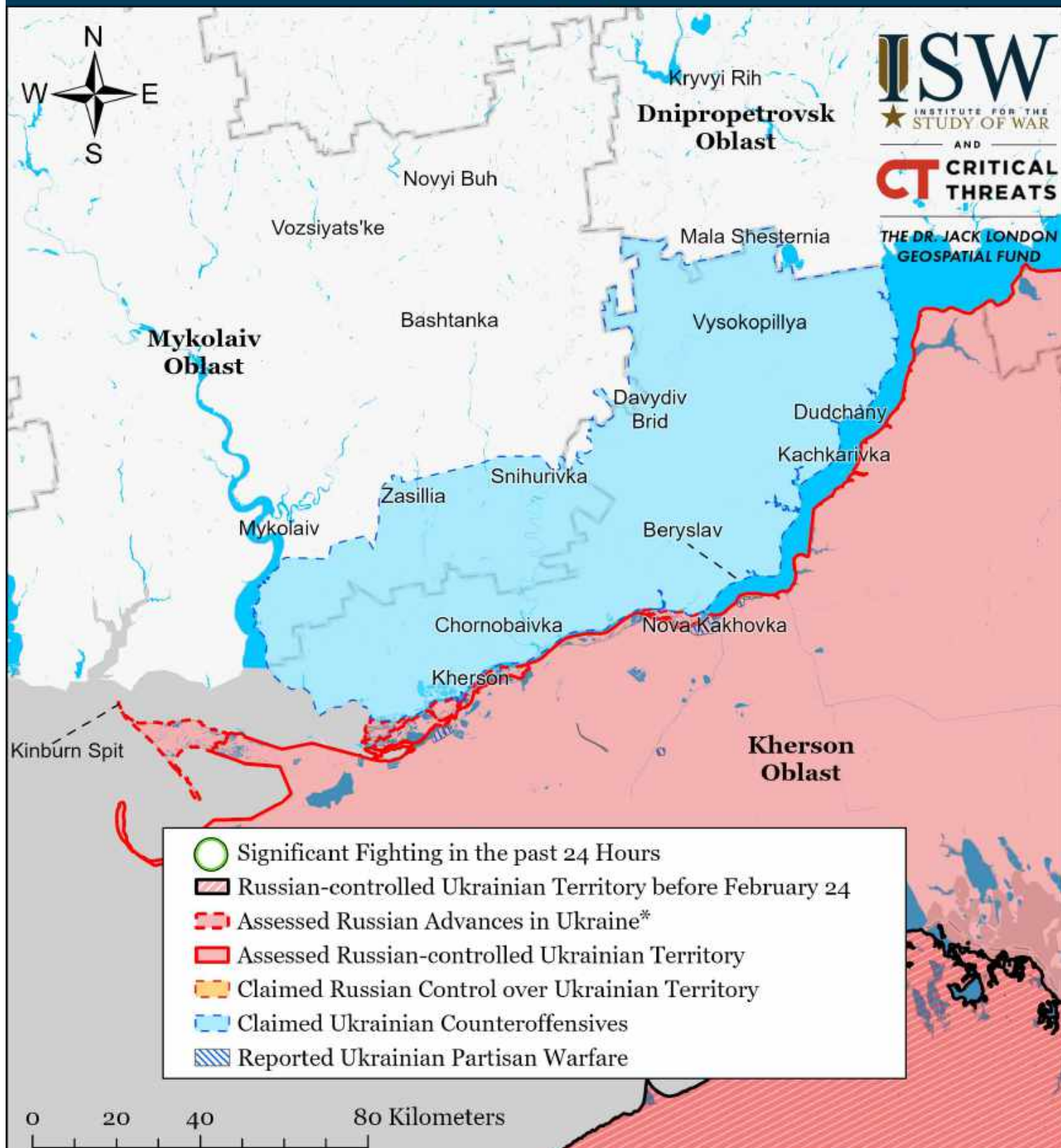


- Significant Fighting in the past 24 Hours
- Assessed Russian-controlled Ukrainian Territory
- Reported Ukrainian Partisan Warfare
- Russian-controlled Ukrainian Territory before February 24
- Claimed Russian Control over Ukrainian Territory
- - - Assessed Russian Advances in Ukraine\*
- Claimed Ukrainian Counteroffensives

\* Assessed Russian advances are areas where ISW assesses Russian forces have operated in or launched attacks against but do not control.



# Assessed Control of Terrain Around Kherson and Mykolaiv as of March 21, 2023, 3:00 PM ET



Map by George Barros, Kateryna Stepanenko, Noel Mikkelsen, Daniel Mealie, Thomas Bergeron, Will Kielm, and Mitchell Belcher - © 2023 Institute for the Study of War and AEI's Critical Threats Project

\* Assessed Russian advances are areas where ISW assesses Russian forces have operated in or launched attacks against but do not control.