

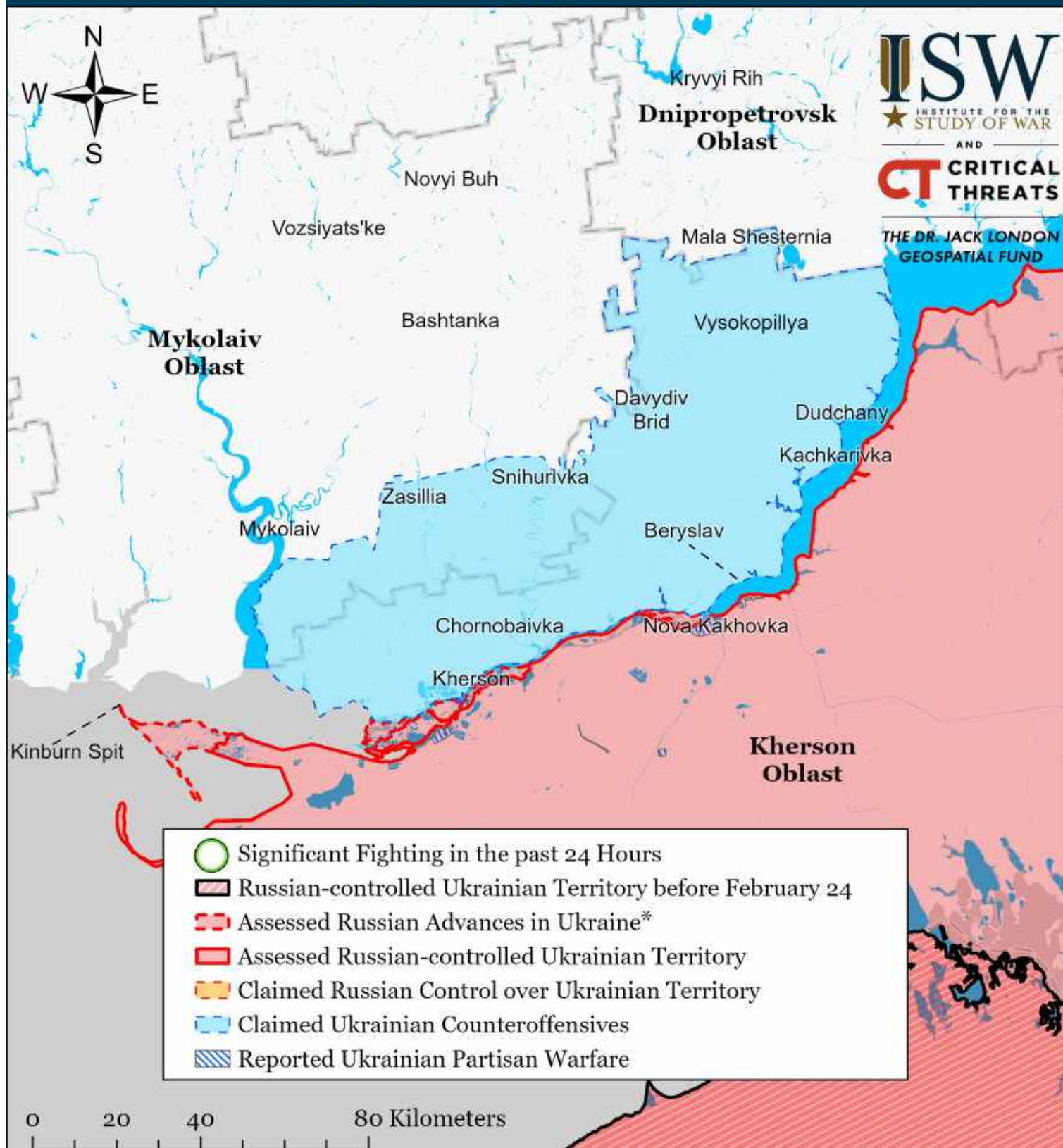
Assessed Control of Terrain in Ukraine and Main Russian Maneuver Axes as of April 3, 2023, 3:00 PM ET



Map by George Barros, Kateryna Stepanenko, Noel Mikkelsen, Daniel Mealie, Thomas Bergeron, Will Kielm, and Mitchell Belcher - © 2023 Institute for the Study of War and AEI's Critical Threats Project

* Assessed Russian advances are areas where ISW assesses Russian forces have operated in or launched attacks against but do not control.

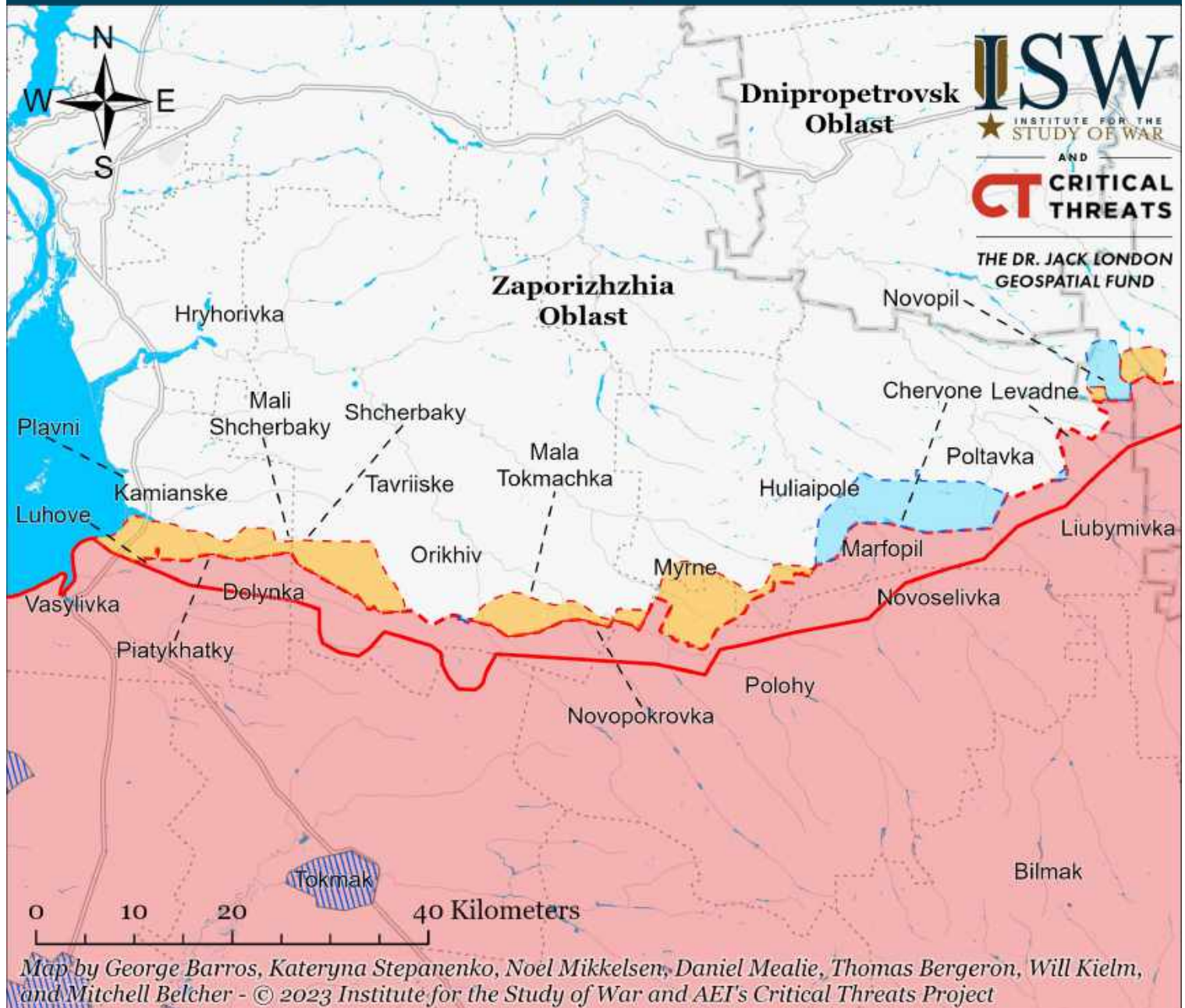
Assessed Control of Terrain Around Kherson and Mykolaiv as of April 3, 2023, 3:00 PM ET



Map by George Barros, Kateryna Stepanenko, Noel Mikkelsen, Daniel Mealie, Thomas Bergeron, Will Kielm, and Mitchell Belcher - © 2023 Institute for the Study of War and AEI's Critical Threats Project

* Assessed Russian advances are areas where ISW assesses Russian forces have operated in or launched attacks against but do not control.

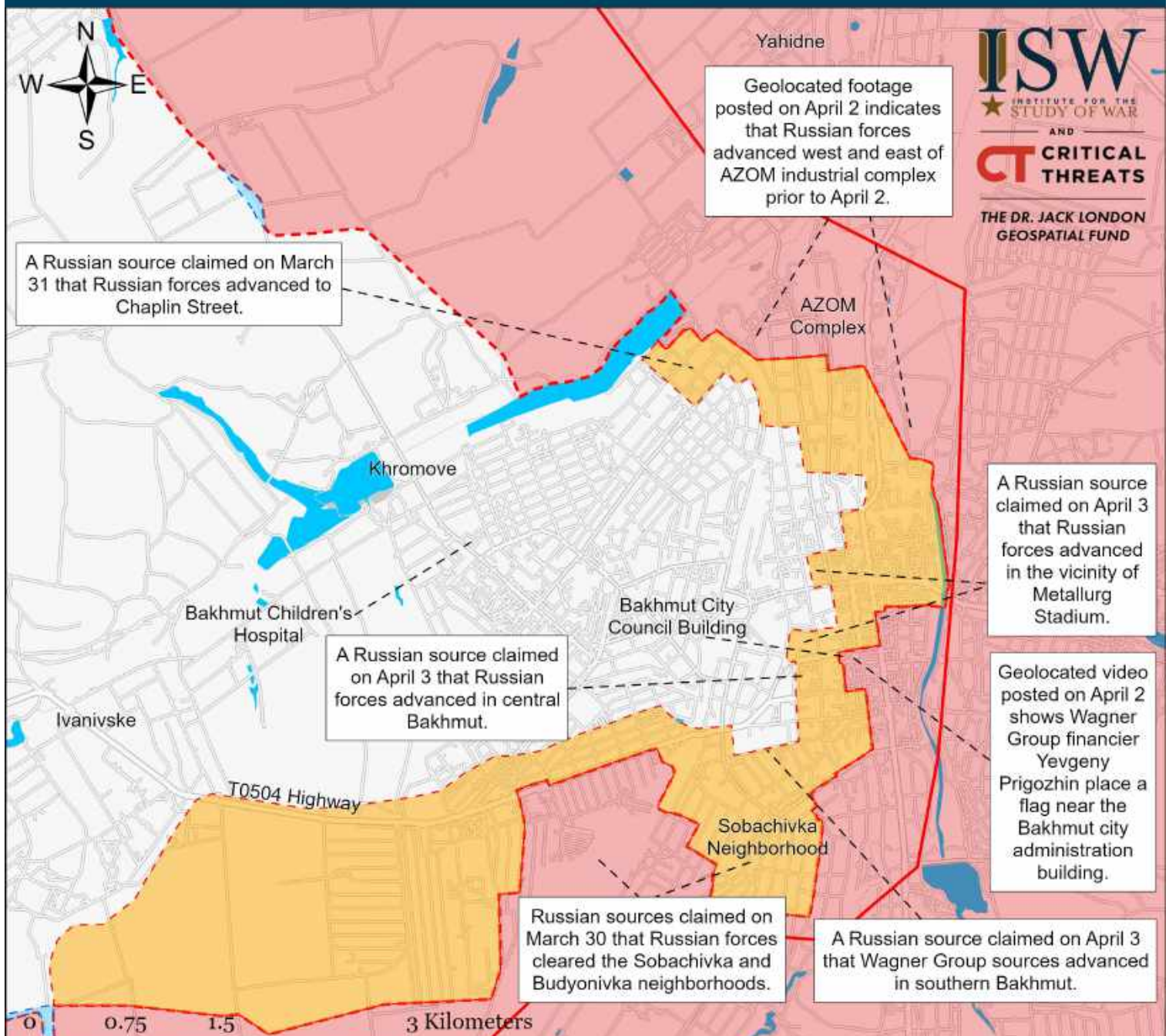
Assessed Control of Terrain Around Zaporizhzhia as of April 3, 2023, 3:00 PM ET



- Significant Fighting in the past 24 Hours
- Assessed Russian-controlled Ukrainian Territory
- Reported Ukrainian Partisan Warfare
- Russian-controlled Ukrainian Territory before February 24
- Claimed Russian Control over Ukrainian Territory
- Assessed Russian Advances in Ukraine*
- Claimed Ukrainian Counteroffensives

* Assessed Russian advances are areas where ISW assesses Russian forces have operated in or launched attacks against but do not control.

Assessed Control of Terrain in Bakhmut as of April 3, 2023, 3:00 PM ET



ISW
INSTITUTE FOR THE
STUDY OF WAR
AND
CT CRITICAL
THREATS

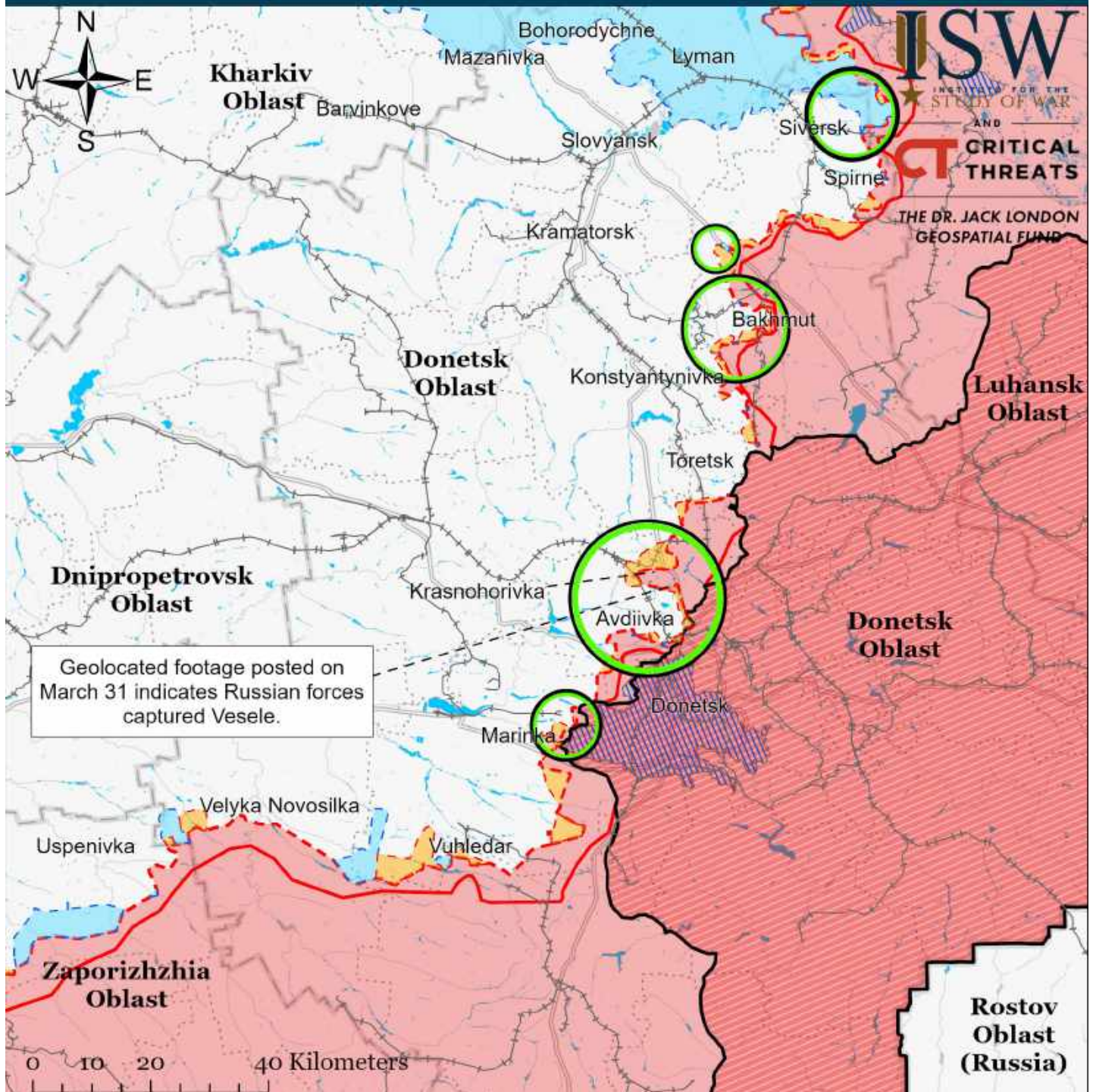
THE DR. JACK LONDON
GEOSPATIAL FUND

Map by George Barros, Kateryna Stepanenko, Noel Mikkelsen, Daniel Mealie, Thomas Bergeron, Will Kiehl, and Mitchell Belcher
© 2023 Institute for the Study of War and AEI's Critical Threats Project

- Significant Fighting in the past 24 Hours
- Assessed Russian-controlled Ukrainian Territory
- Claimed Ukrainian Counteroffensives
- - - Assessed Russian Advances in Ukraine*
- Claimed Russian Control over Ukrainian Territory
- ▨ Reported Ukrainian Partisan Warfare

* Assessed Russian advances are areas where ISW assesses Russian forces have operated in or launched attacks against but do not control.

Assessed Control of Terrain Around Donetsk as of April 3, 2023, 3:00 PM ET

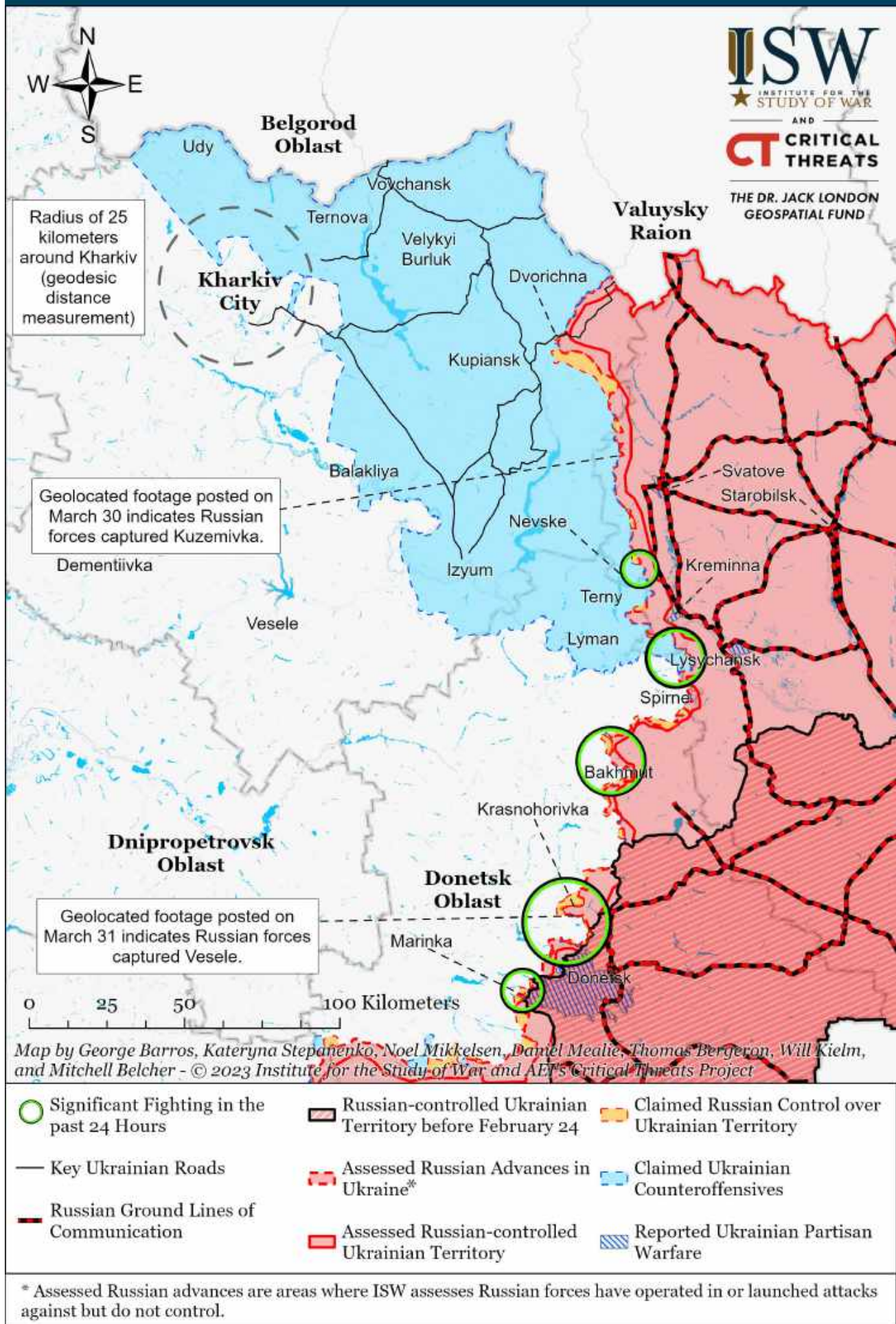


Map by George Barros, Kateryna Stepanenko, Noel Mikkelsen, Daniel Mealie, Thomas Bergeron, Will Kiern, and Mitchell Belcher - © 2023 Institute for the Study of War and AEI's Critical Threats Project

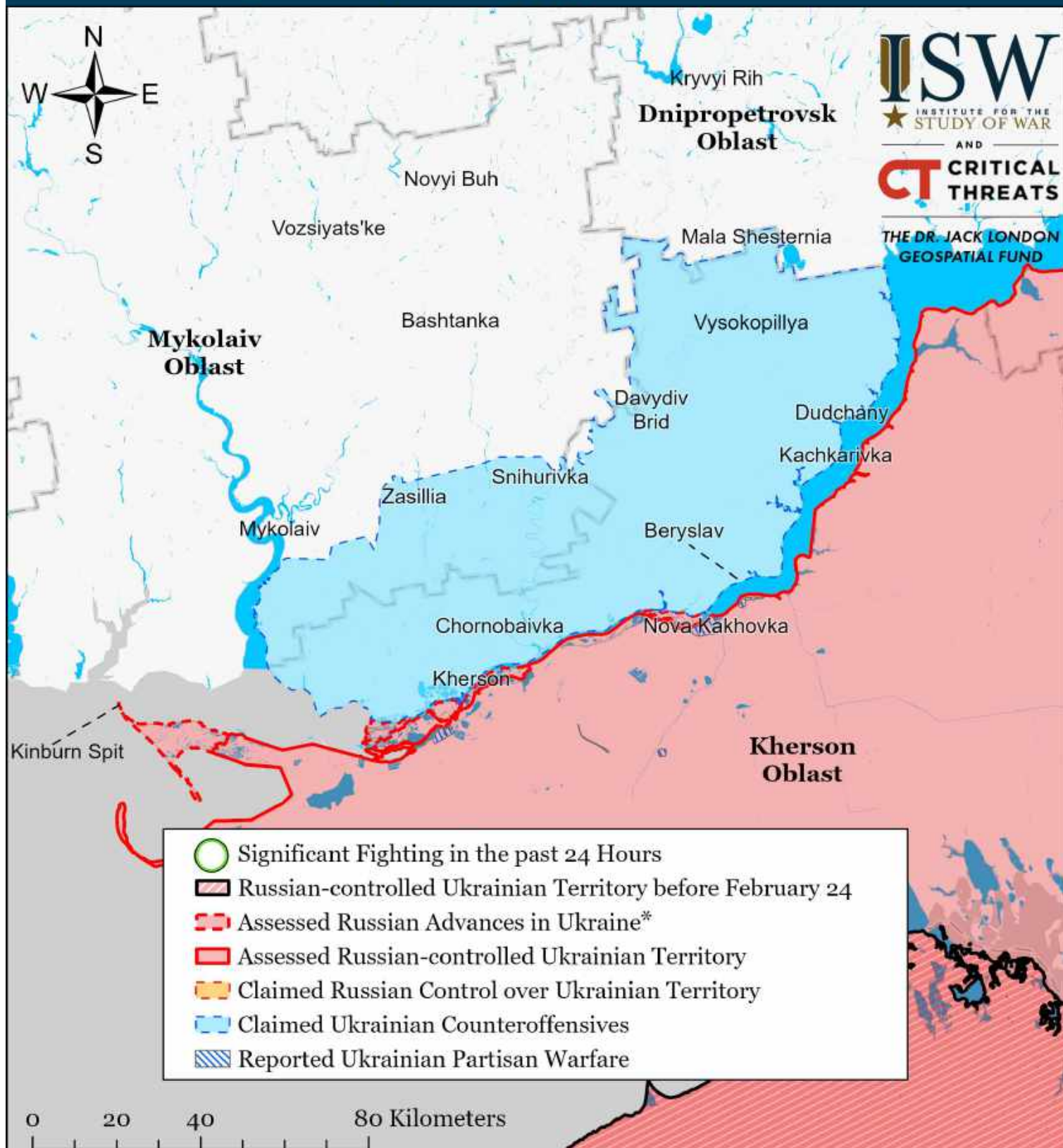
- Significant Fighting in the past 24 Hours
- Assessed Russian-controlled Ukrainian Territory
- Russian-controlled Ukrainian Territory before February 24
- Claimed Russian Control over Ukrainian Territory
- - Assessed Russian Advances in Ukraine*
- Claimed Ukrainian Counteroffensives
- + Major Railroads
- ▨ Reported Ukrainian Partisan Warfare

* Assessed Russian advances are areas where ISW assesses Russian forces have operated in or launched attacks against but do not control.

Assessed Control of Terrain Around Kharkiv as of April 3, 2023, 3:00 PM ET



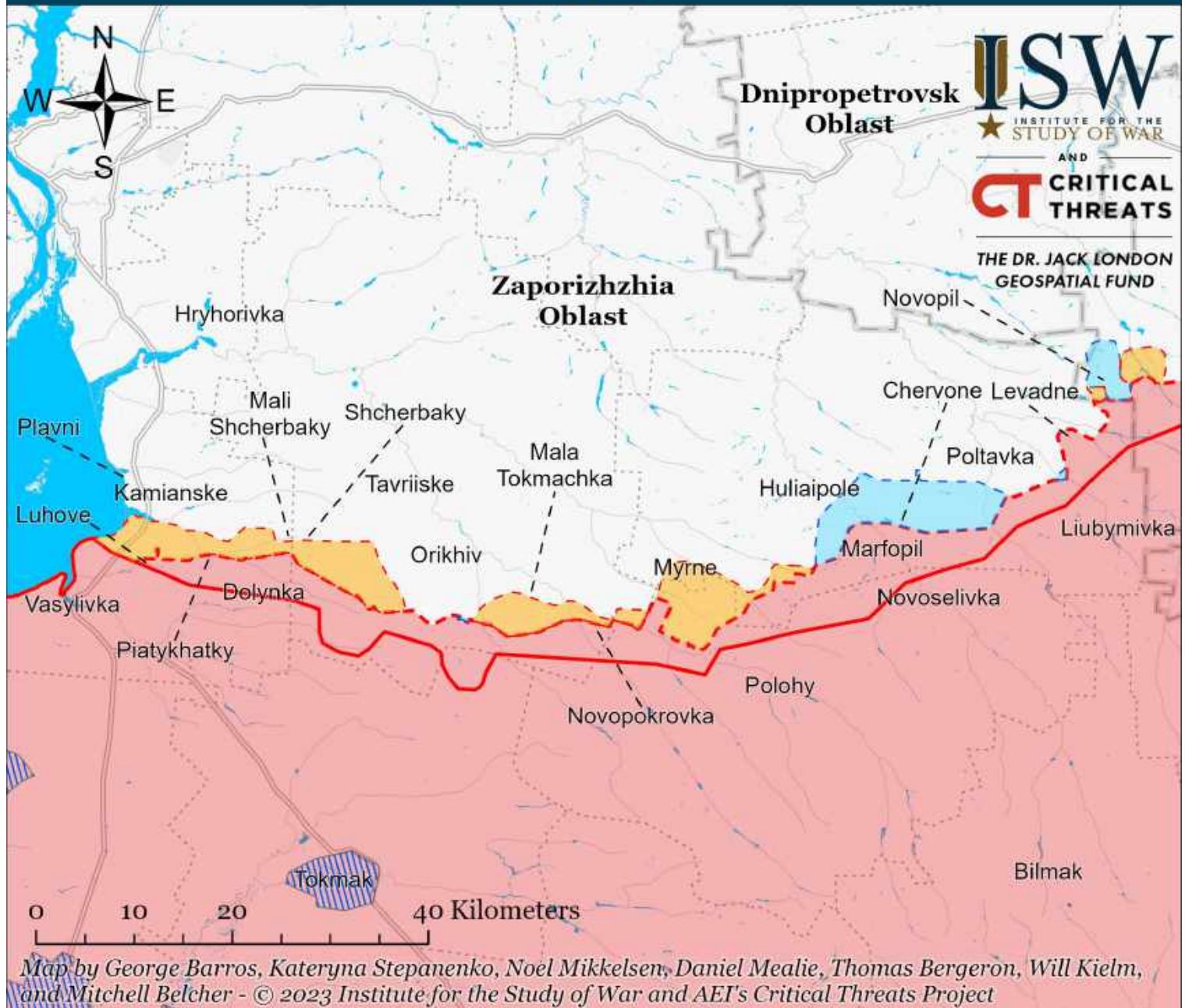
Assessed Control of Terrain Around Kherson and Mykolaiv as of April 2, 2023, 3:00 PM ET



Map by George Barros, Kateryna Stepanenko, Noel Mikkelsen, Daniel Mealie, Thomas Bergeron, Will Kielm, and Mitchell Belcher - © 2023 Institute for the Study of War and AEI's Critical Threats Project

* Assessed Russian advances are areas where ISW assesses Russian forces have operated in or launched attacks against but do not control.

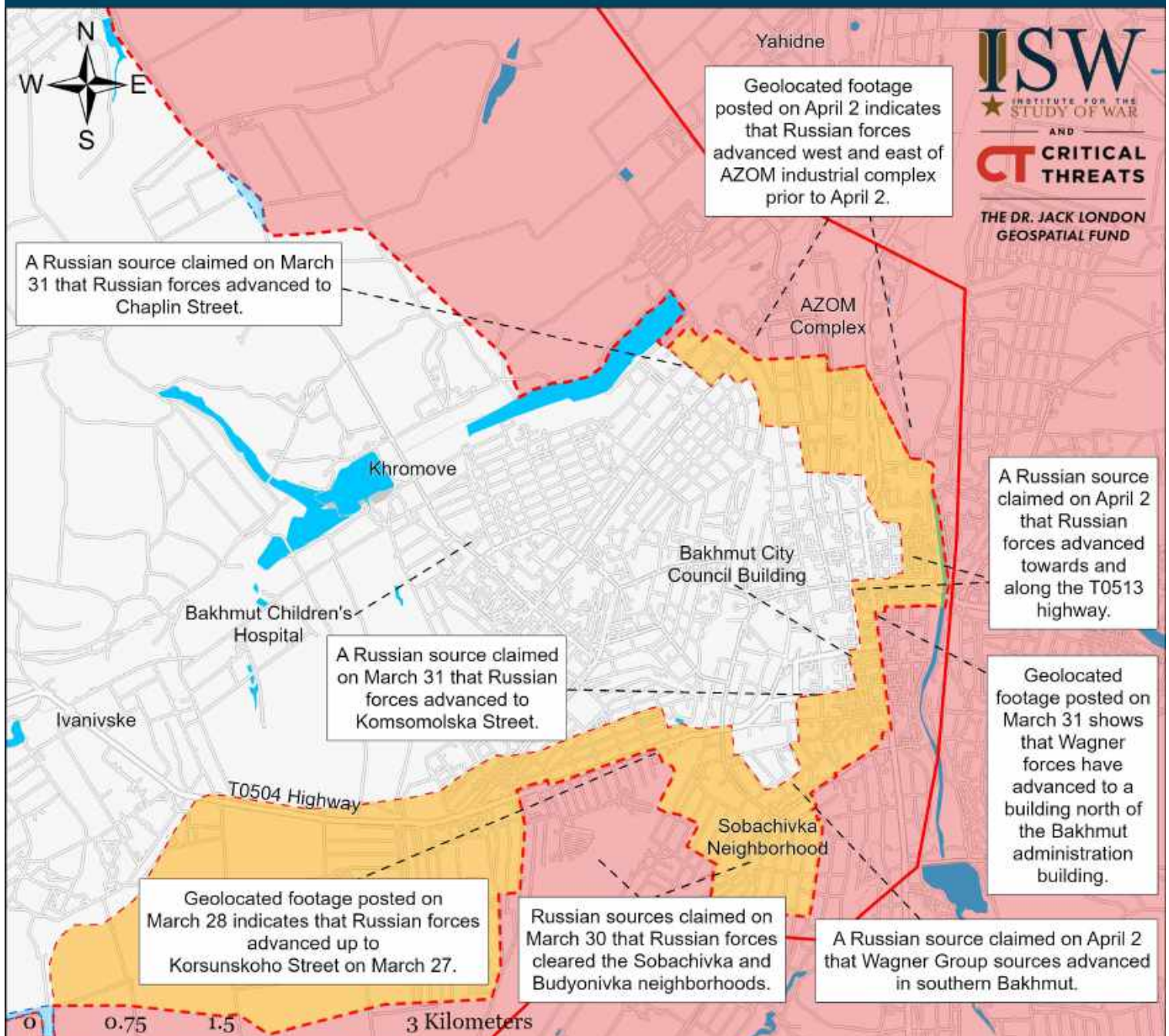
Assessed Control of Terrain Around Zaporizhzhia as of April 2, 2023, 3:00 PM ET



- Significant Fighting in the past 24 Hours
- Assessed Russian-controlled Ukrainian Territory
- Reported Ukrainian Partisan Warfare
- Russian-controlled Ukrainian Territory before February 24
- Claimed Russian Control over Ukrainian Territory
- Assessed Russian Advances in Ukraine*
- Claimed Ukrainian Counteroffensives

* Assessed Russian advances are areas where ISW assesses Russian forces have operated in or launched attacks against but do not control.

Assessed Control of Terrain in Bakhmut as of April 2, 2023, 3:00 PM ET



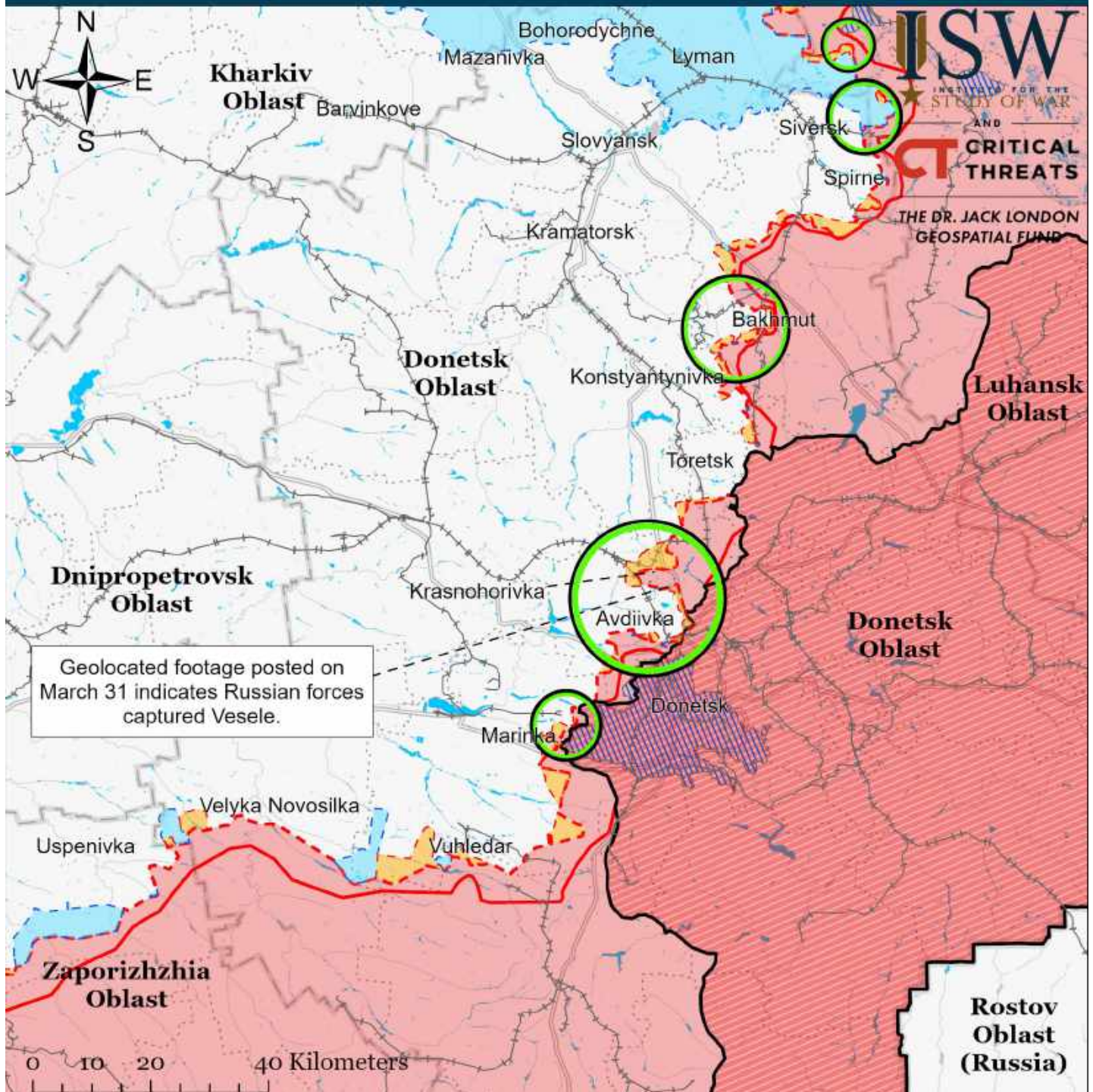
ISW
INSTITUTE FOR THE
STUDY OF WAR
AND
CT CRITICAL
THREATS
THE DR. JACK LONDON
GEOSPATIAL FUND

Map by George Barros, Kateryna Stepanenko, Noel Mikkelsen, Daniel Mealie, Thomas Bergeron, Will Kiehl, and Mitchell Belcher
© 2023 Institute for the Study of War and AEI's Critical Threats Project

- Significant Fighting in the past 24 Hours
- Assessed Russian-controlled Ukrainian Territory
- Claimed Ukrainian Counteroffensives
- Assessed Russian Advances in Ukraine*
- Claimed Russian Control over Ukrainian Territory
- Reported Ukrainian Partisan Warfare

* Assessed Russian advances are areas where ISW assesses Russian forces have operated in or launched attacks against but do not control.

Assessed Control of Terrain Around Donetsk as of April 2, 2023, 3:00 PM ET

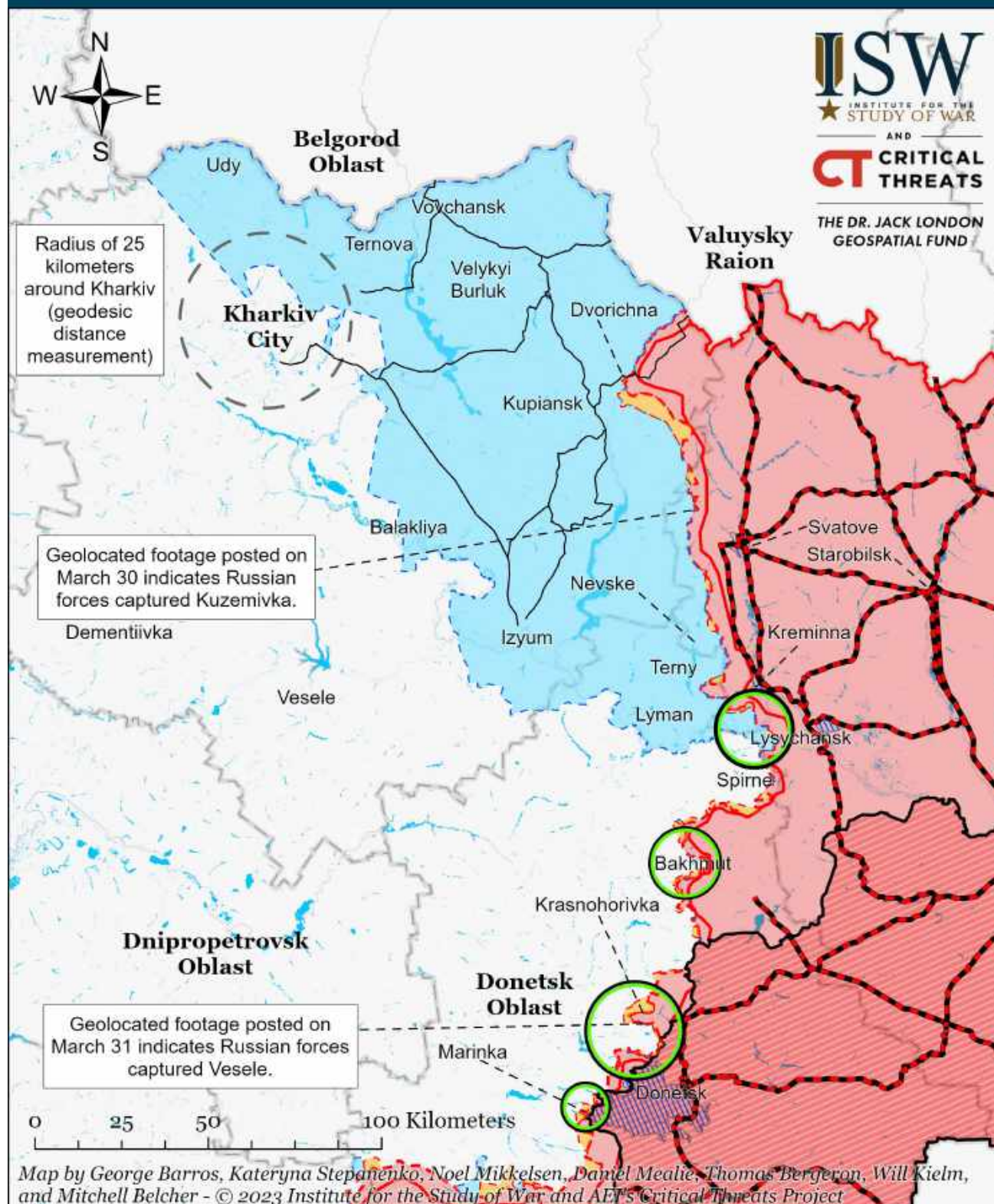


Map by George Barros, Kateryna Stepanenko, Noel Mikkelsen, Daniel Mealie, Thomas Bergeron, Will Kiern, and Mitchell Belcher - © 2023 Institute for the Study of War and AEI's Critical Threats Project

- Significant Fighting in the past 24 Hours
- Russian-controlled Ukrainian Territory before February 24
- Assessed Russian Advances in Ukraine*
- Assessed Russian-controlled Ukrainian Territory
- Claimed Russian Control over Ukrainian Territory
- Claimed Ukrainian Counteroffensives
- Major Railroads
- Reported Ukrainian Partisan Warfare

* Assessed Russian advances are areas where ISW assesses Russian forces have operated in or launched attacks against but do not control.

Assessed Control of Terrain Around Kharkiv as of April 2, 2023, 3:00 PM ET



- Significant Fighting in the past 24 Hours
- Key Ukrainian Roads
- Russian Ground Lines of Communication
- Russian-controlled Ukrainian Territory before February 24
- Assessed Russian Advances in Ukraine*
- Assessed Russian-controlled Ukrainian Territory
- Claimed Russian Control over Ukrainian Territory
- Claimed Ukrainian Counteroffensives
- Reported Ukrainian Partisan Warfare

* Assessed Russian advances are areas where ISW assesses Russian forces have operated in or launched attacks against but do not control.

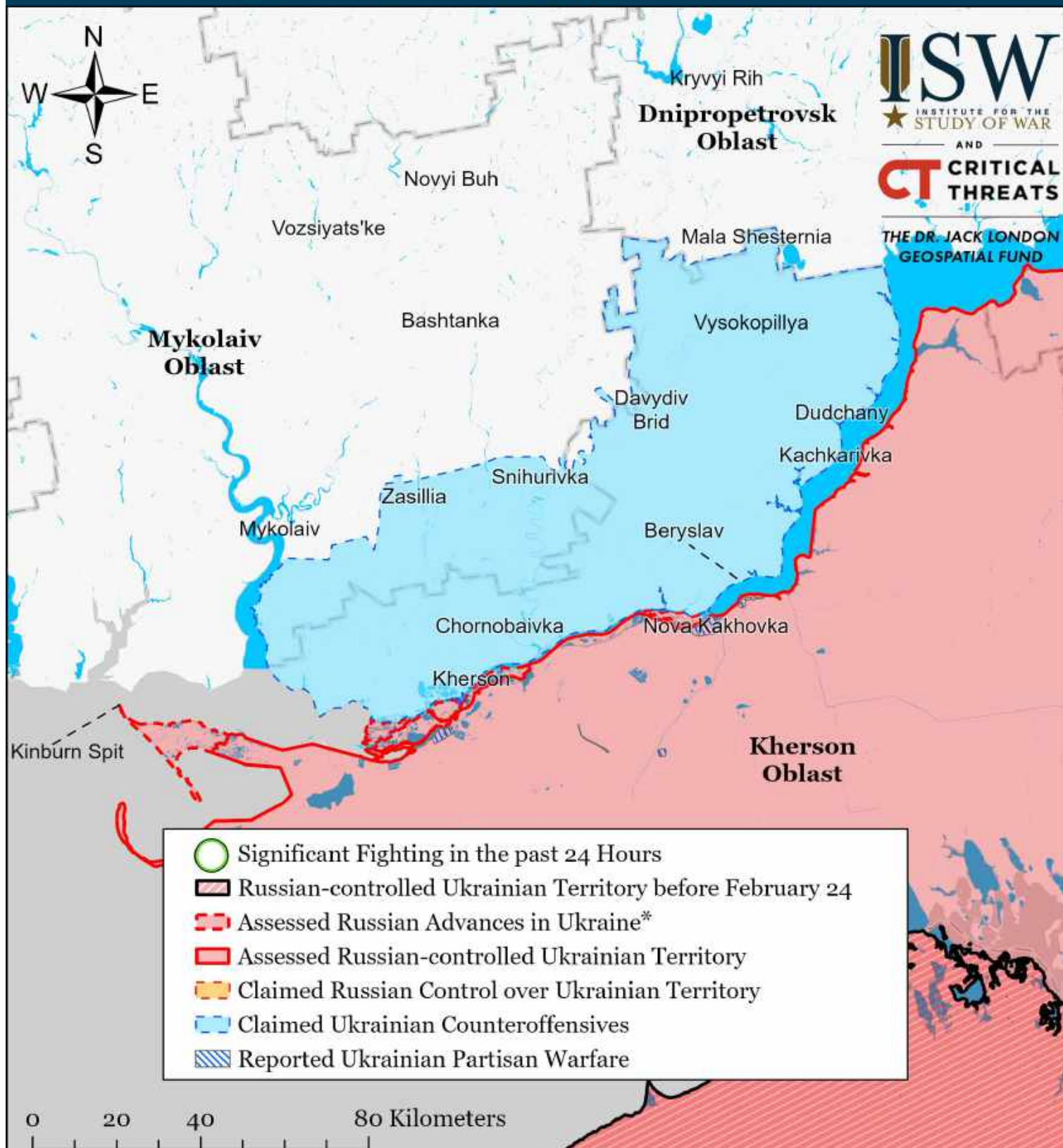
Assessed Control of Terrain in Ukraine and Main Russian Maneuver Axes as of April 2, 2023, 3:00 PM ET



Map by George Barros, Kateryna Stepanenko, Noel Mikkelsen, Daniel Mealie, Thomas Bergeron, Will Kielm, and Mitchell Belcher - © 2023 Institute for the Study of War and AEI's Critical Threats Project

* Assessed Russian advances are areas where ISW assesses Russian forces have operated in or launched attacks against but do not control.

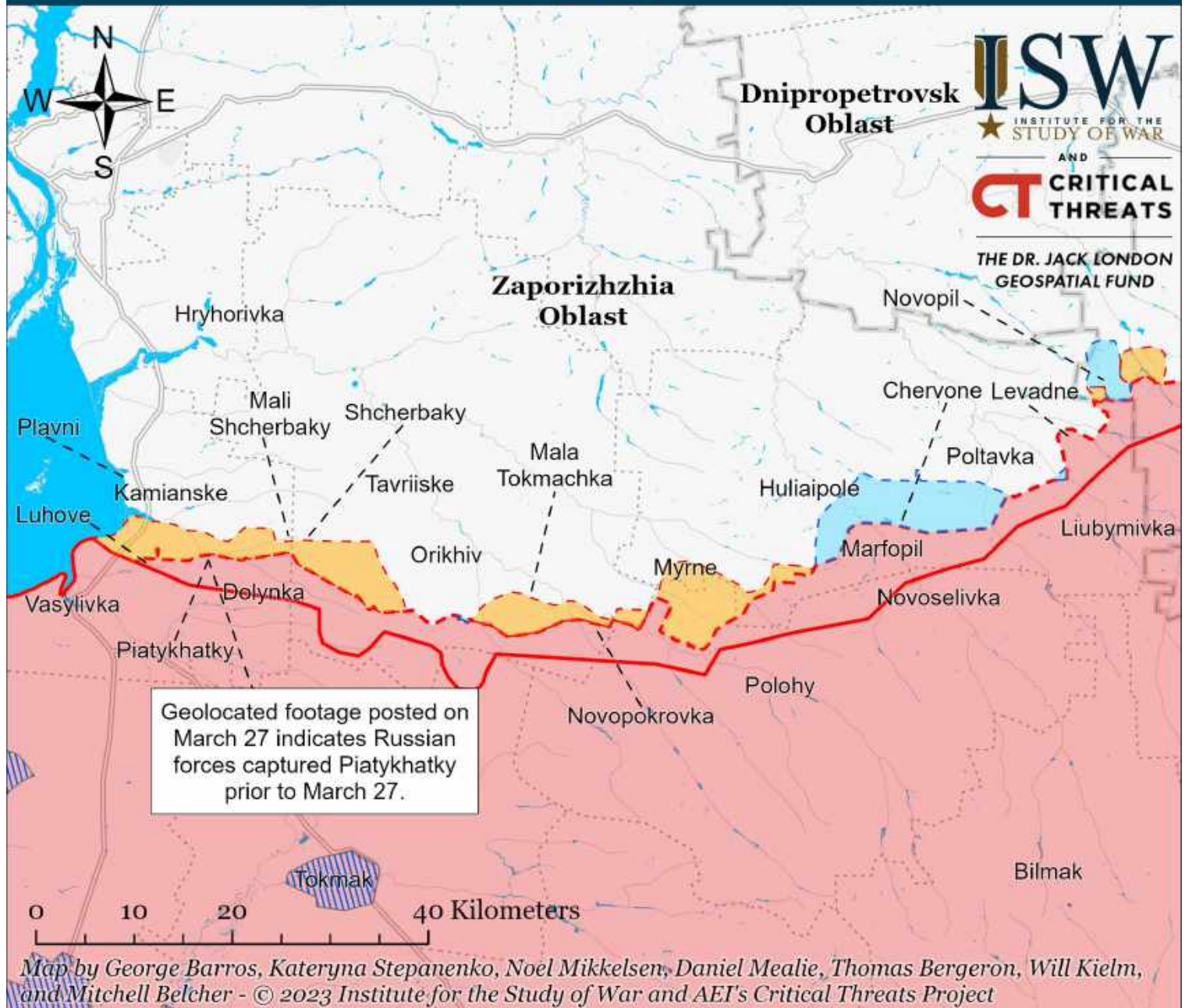
Assessed Control of Terrain Around Kherson and Mykolaiv as of April 1, 2023, 3:00 PM ET



Map by George Barros, Kateryna Stepanenko, Noel Mikkelsen, Daniel Mealie, Thomas Bergeron, Will Kielm, and Mitchell Belcher - © 2023 Institute for the Study of War and AEI's Critical Threats Project

* Assessed Russian advances are areas where ISW assesses Russian forces have operated in or launched attacks against but do not control.

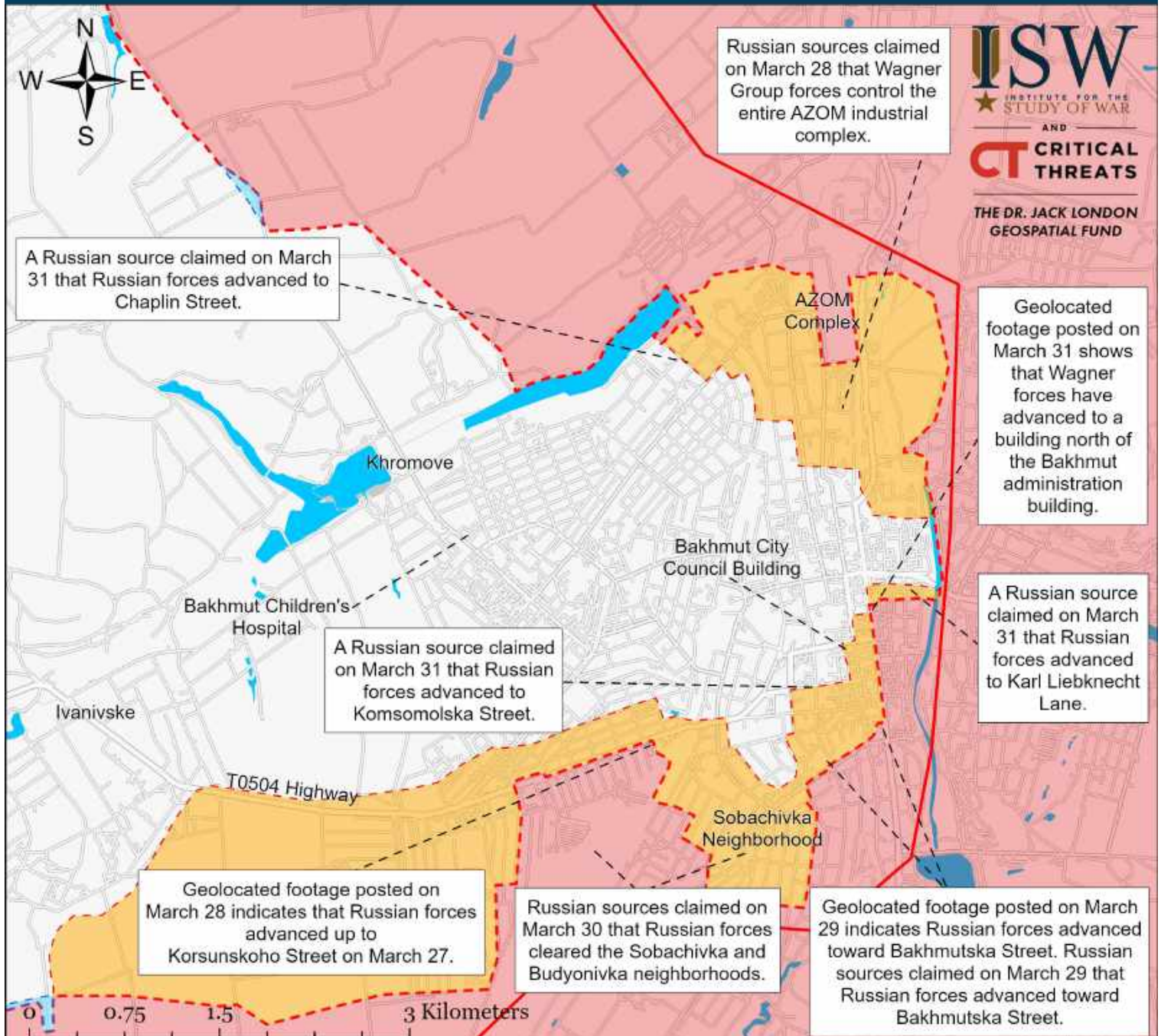
Assessed Control of Terrain Around Zaporizhzhia as of April 1, 2023, 3:00 PM ET



- Significant Fighting in the past 24 Hours
- Assessed Russian-controlled Ukrainian Territory
- ▨ Reported Ukrainian Partisan Warfare
- Russian-controlled Ukrainian Territory before February 24
- Claimed Russian Control over Ukrainian Territory
- - - Assessed Russian Advances in Ukraine*
- Claimed Ukrainian Counteroffensives

* Assessed Russian advances are areas where ISW assesses Russian forces have operated in or launched attacks against but do not control.

Assessed Control of Terrain in Bakhmut as of April 1, 2023, 3:00 PM ET

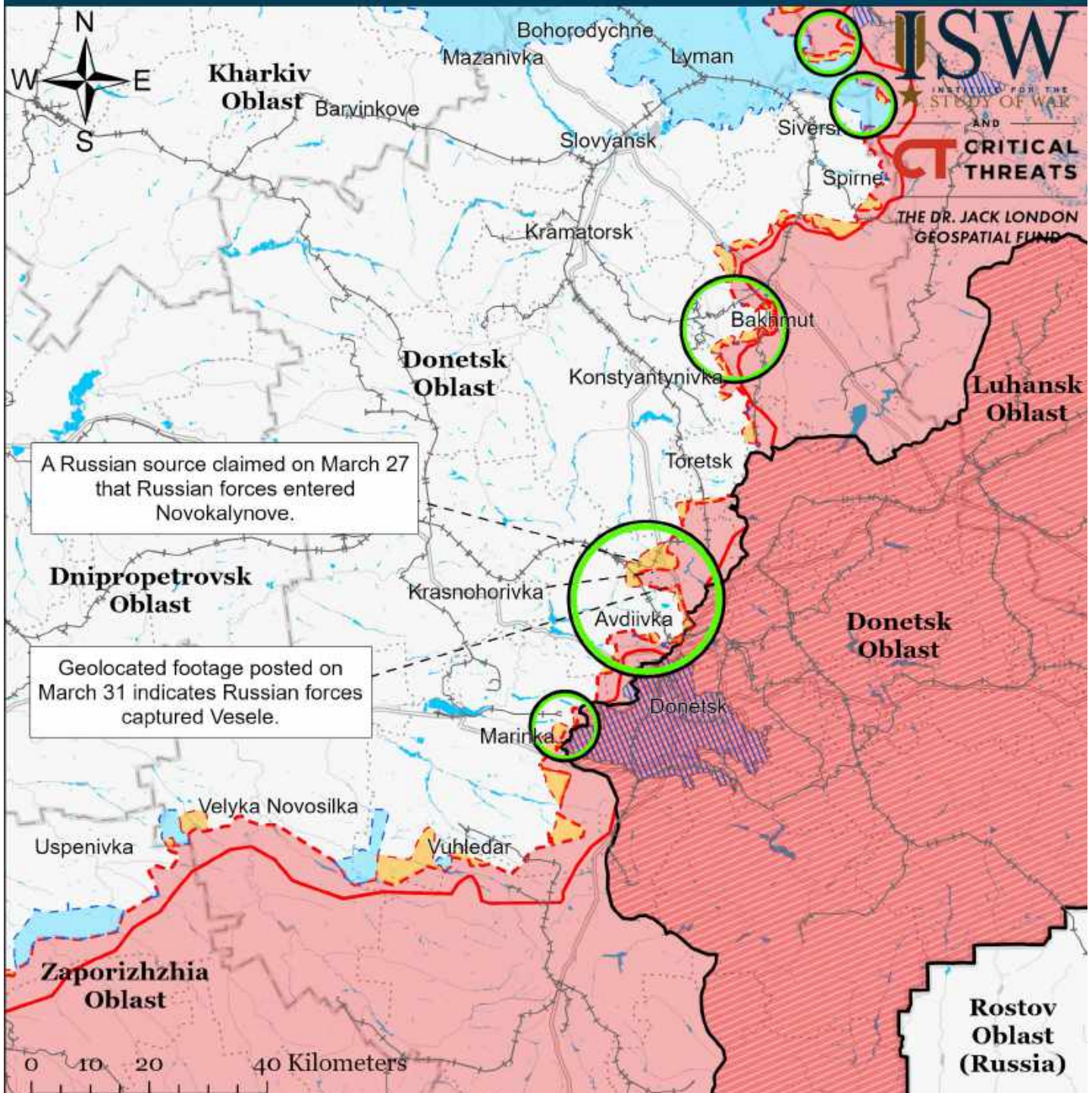


Map by George Barros, Kateryna Stepanenko, Noel Mikkelsen, Daniel Mealie, Thomas Bergeron, Will Kiehm, and Mitchell Belcher
© 2023 Institute for the Study of War and AEI's Critical Threats Project

- | | | |
|---|--|-------------------------------------|
| Significant Fighting in the past 24 Hours | Assessed Russian-controlled Ukrainian Territory | Claimed Ukrainian Counteroffensives |
| Assessed Russian Advances in Ukraine* | Claimed Russian Control over Ukrainian Territory | Reported Ukrainian Partisan Warfare |

* Assessed Russian advances are areas where ISW assesses Russian forces have operated in or launched attacks against but do not control.

Assessed Control of Terrain Around Donetsk as of April 1, 2023, 3:00 PM ET

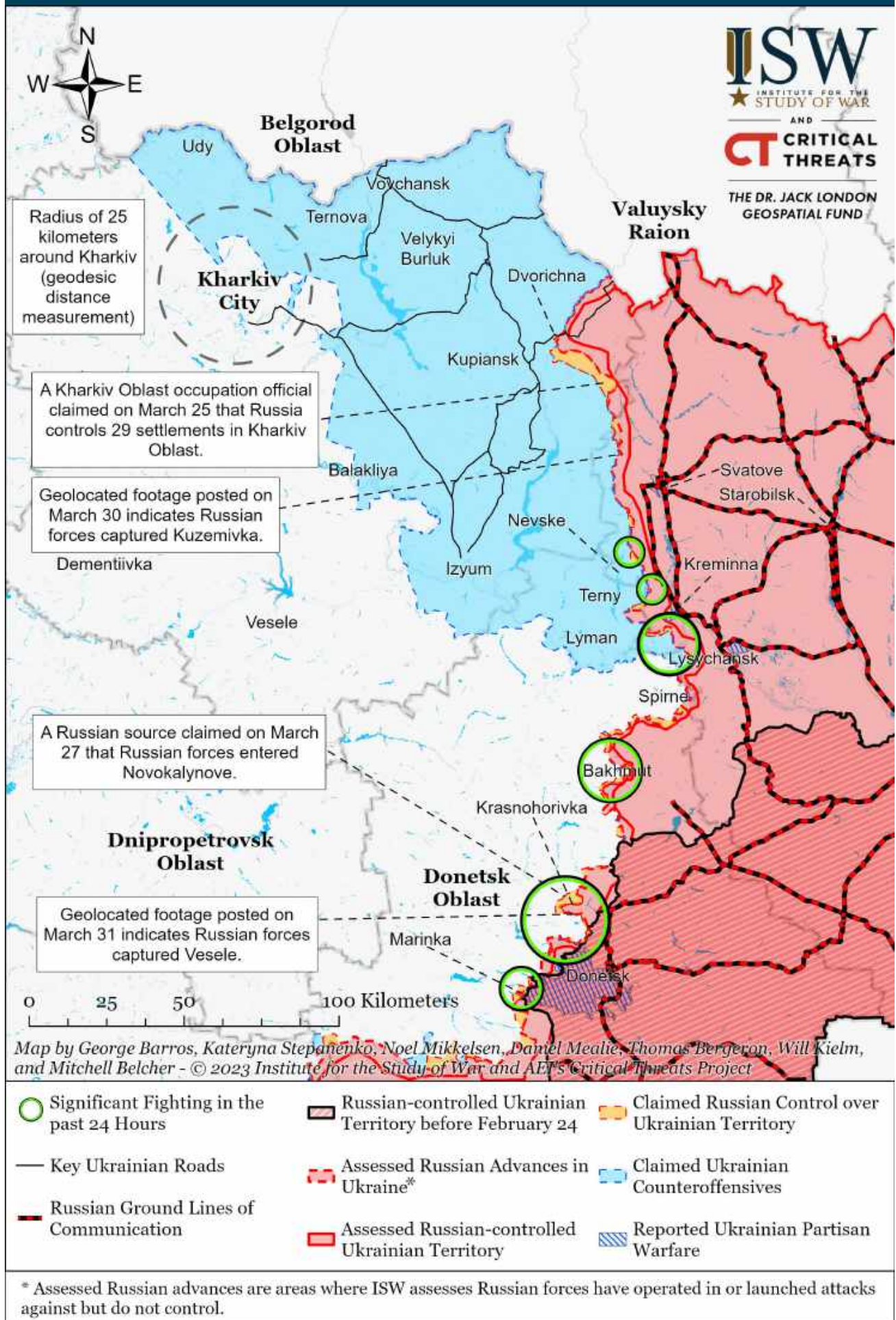


Map by George Barros, Kateryna Stepanenko, Noel Mikkelsen, Daniel Mealie, Thomas Bergeron, Will Kiern, and Mitchell Belcher - © 2023 Institute for the Study of War and AEI's Critical Threats Project

- | | | |
|---|--|-------------------------------------|
| Significant Fighting in the past 24 Hours | Assessed Russian-controlled Ukrainian Territory | Major Railroads |
| Russian-controlled Ukrainian Territory before February 24 | Claimed Russian Control over Ukrainian Territory | Reported Ukrainian Partisan Warfare |
| Assessed Russian Advances in Ukraine* | Claimed Ukrainian Counteroffensives | |

* Assessed Russian advances are areas where ISW assesses Russian forces have operated in or launched attacks against but do not control.

Assessed Control of Terrain Around Kharkiv as of April 1, 2023, 3:00 PM ET



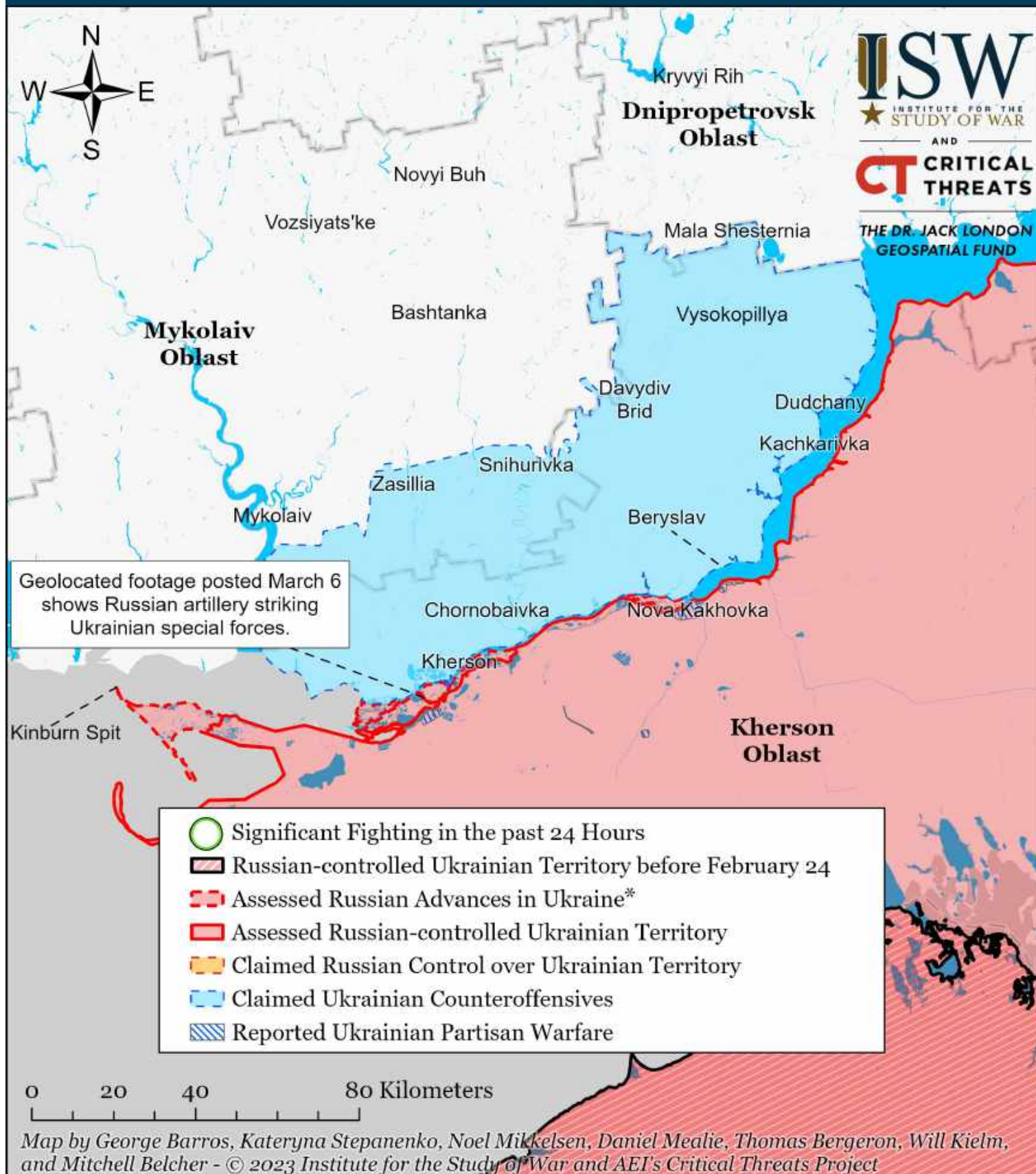
Assessed Control of Terrain in Ukraine and Main Russian Maneuver Axes as of April 1, 2023, 3:00 PM ET



Map by George Barros, Kateryna Stepanenko, Noel Mikkelsen, Daniel Mealie, Thomas Bergeron, Will Kielm, and Mitchell Belcher - © 2023 Institute for the Study of War and AEI's Critical Threats Project

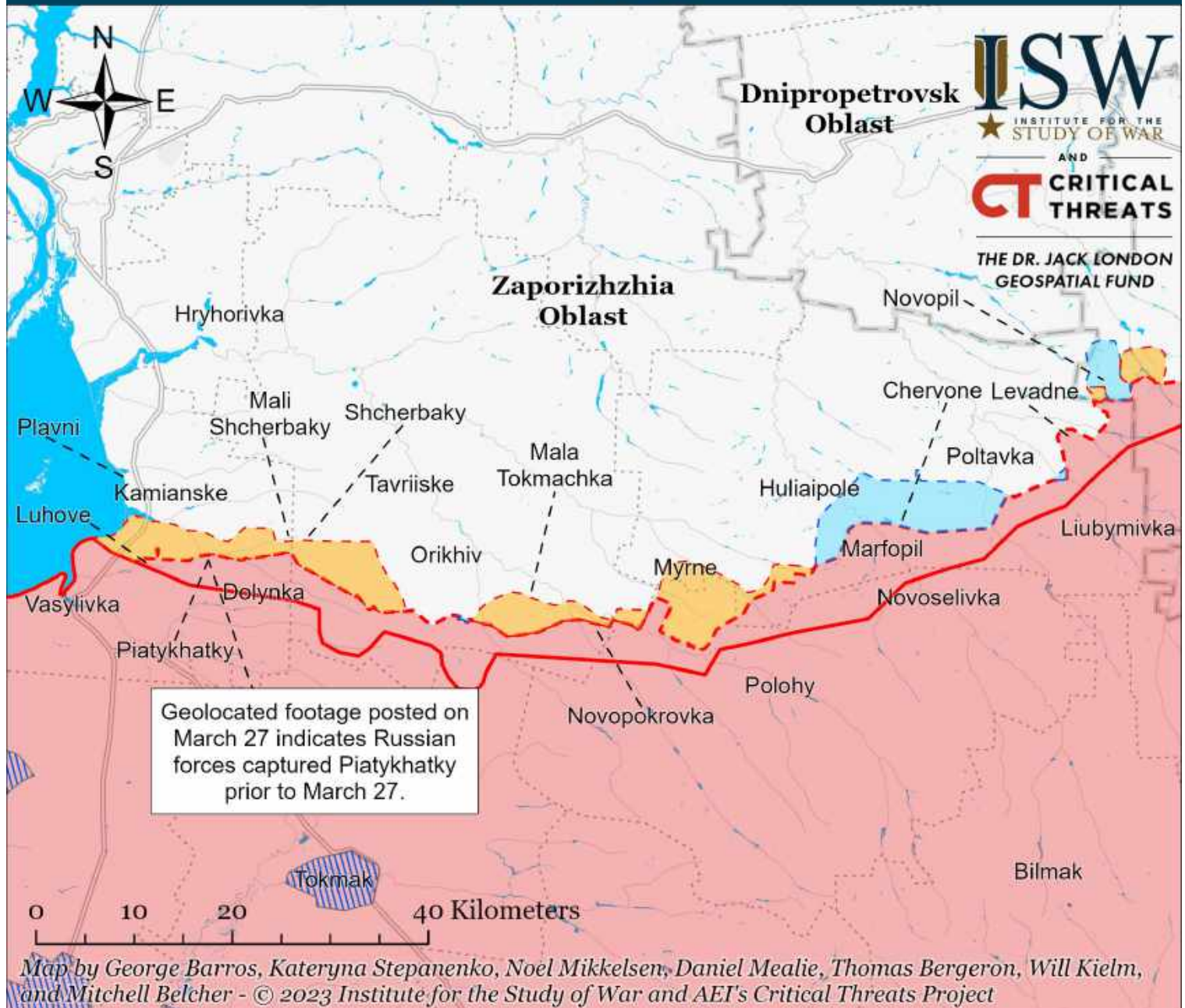
* Assessed Russian advances are areas where ISW assesses Russian forces have operated in or launched attacks against but do not control.

Assessed Control of Terrain Around Kherson and Mykolaiv as of March 31, 2023, 3:00 PM ET



* Assessed Russian advances are areas where ISW assesses Russian forces have operated in or launched attacks against but do not control.

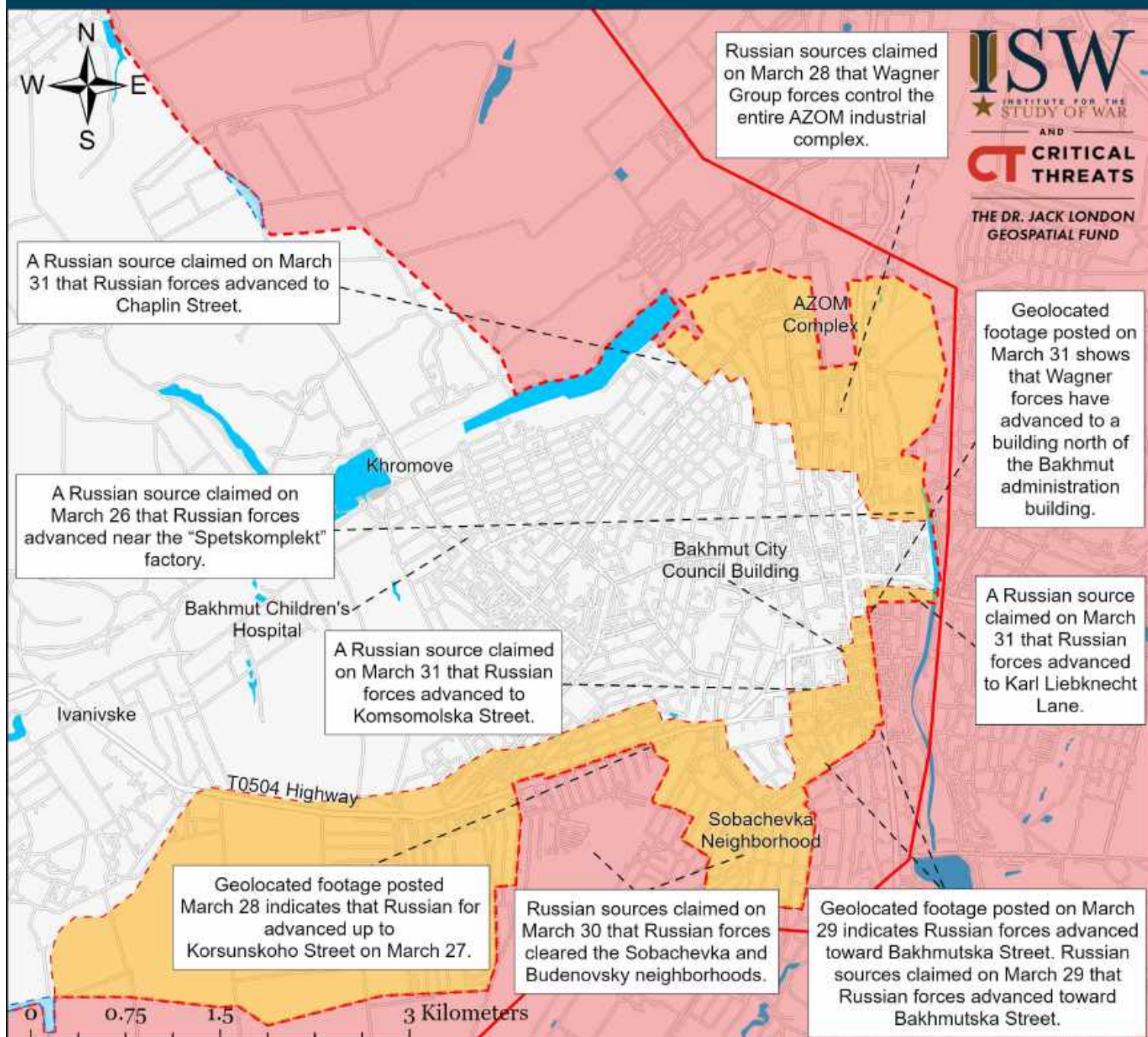
Assessed Control of Terrain Around Zaporizhia as of March 31, 2023, 3:00 PM ET



- Significant Fighting in the past 24 Hours
- Assessed Russian-controlled Ukrainian Territory
- Reported Ukrainian Partisan Warfare
- Russian-controlled Ukrainian Territory before February 24
- Claimed Russian Control over Ukrainian Territory
- - - Assessed Russian Advances in Ukraine*
- Claimed Ukrainian Counteroffensives

* Assessed Russian advances are areas where ISW assesses Russian forces have operated in or launched attacks against but do not control.

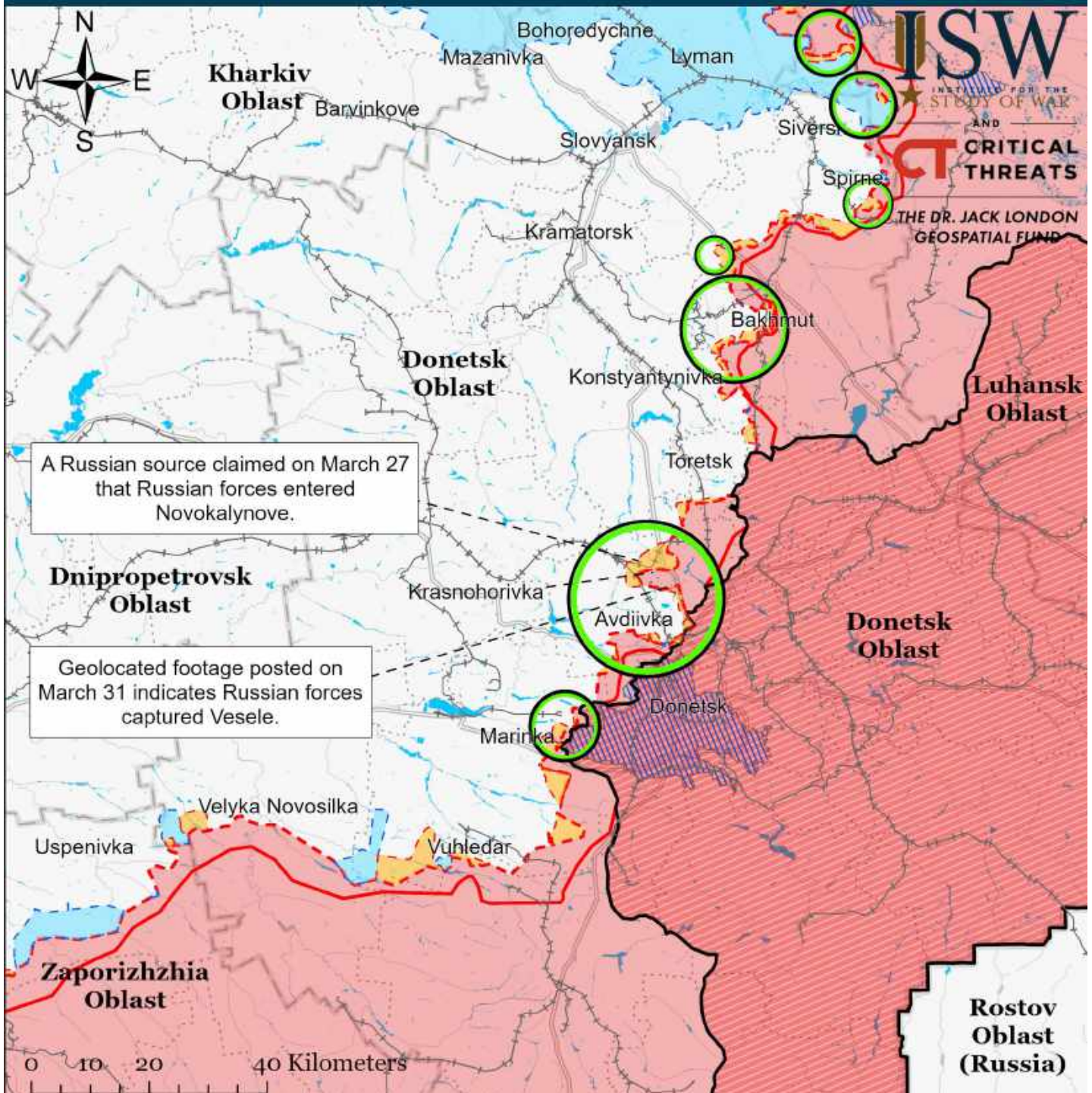
Assessed Control of Terrain in Bakhmut as of March 31, 2023, 3:00 PM ET



- Significant Fighting in the past 24 Hours
- ▬ Assessed Russian-controlled Ukrainian Territory
- ▬ Claimed Ukrainian Counteroffensives
- - - Assessed Russian Advances in Ukraine*
- ▬ Claimed Russian Control over Ukrainian Territory
- ▨ Reported Ukrainian Partisan Warfare

* Assessed Russian advances are areas where ISW assesses Russian forces have operated in or launched attacks against but do not control.

Assessed Control of Terrain Around Donetsk as of March 31, 2023, 3:00 PM ET

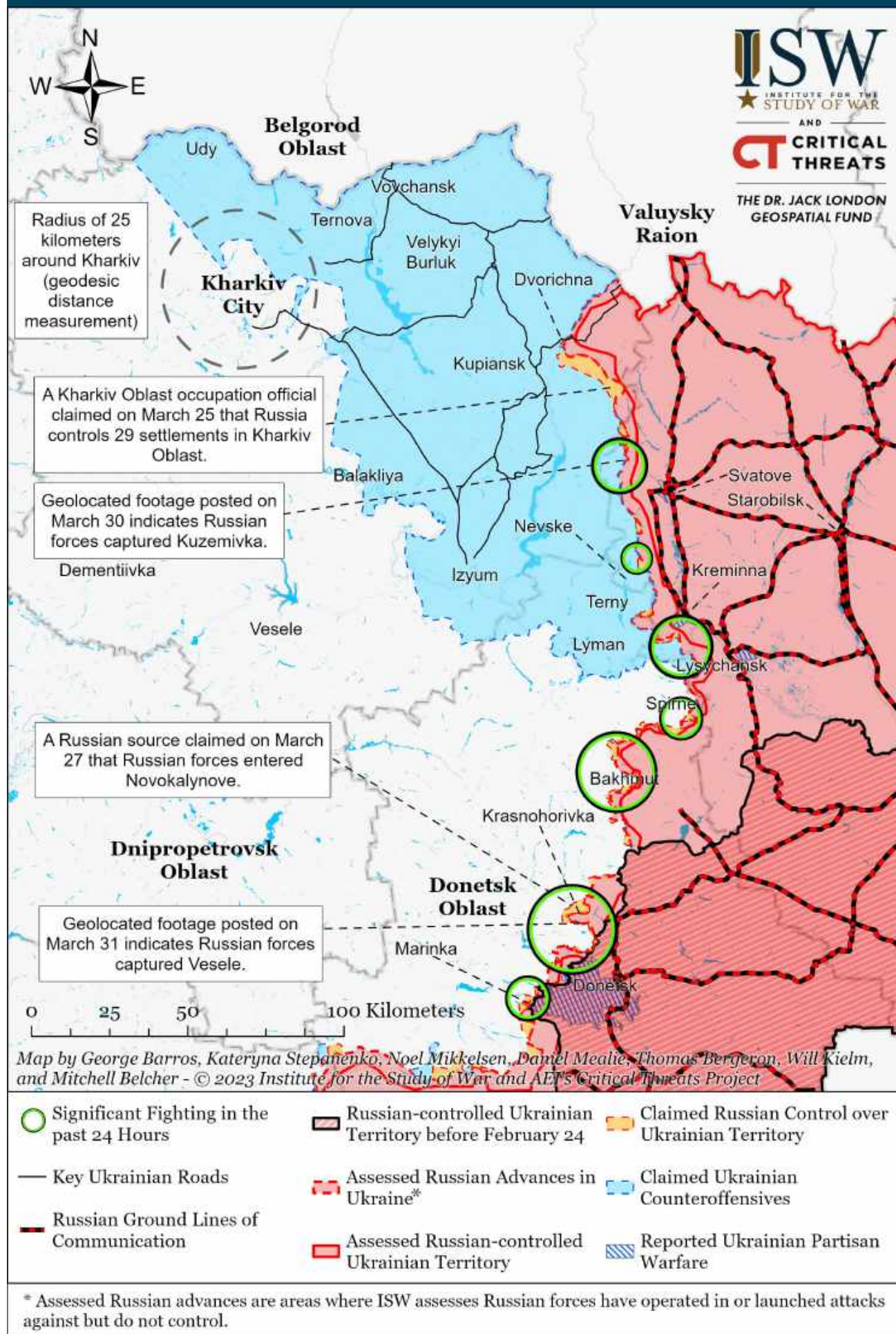


Map by George Barros, Kateryna Stepanenko, Noel Mikkelsen, Daniel Mealie, Thomas Bergeron, Will Kiern, and Mitchell Belcher - © 2023 Institute for the Study of War and AEI's Critical Threats Project

- Significant Fighting in the past 24 Hours
- Russian-controlled Ukrainian Territory before February 24
- Assessed Russian Advances in Ukraine*
- Assessed Russian-controlled Ukrainian Territory
- Claimed Russian Control over Ukrainian Territory
- Claimed Ukrainian Counteroffensives
- Major Railroads
- Reported Ukrainian Partisan Warfare

* Assessed Russian advances are areas where ISW assesses Russian forces have operated in or launched attacks against but do not control.

Assessed Control of Terrain Around Kharkiv as of March 31, 2023, 3:00 PM ET



Assessed Control of Terrain in Ukraine and Main Russian Maneuver Axes as of March 31, 2023, 3:00 PM ET



Map by George Barros, Kateryna Stepanenko, Noel Mikkelsen, Daniel Mealie, Thomas Bergeron, Will Kielm, and Mitchell Belcher - © 2023 Institute for the Study of War and AEI's Critical Threats Project

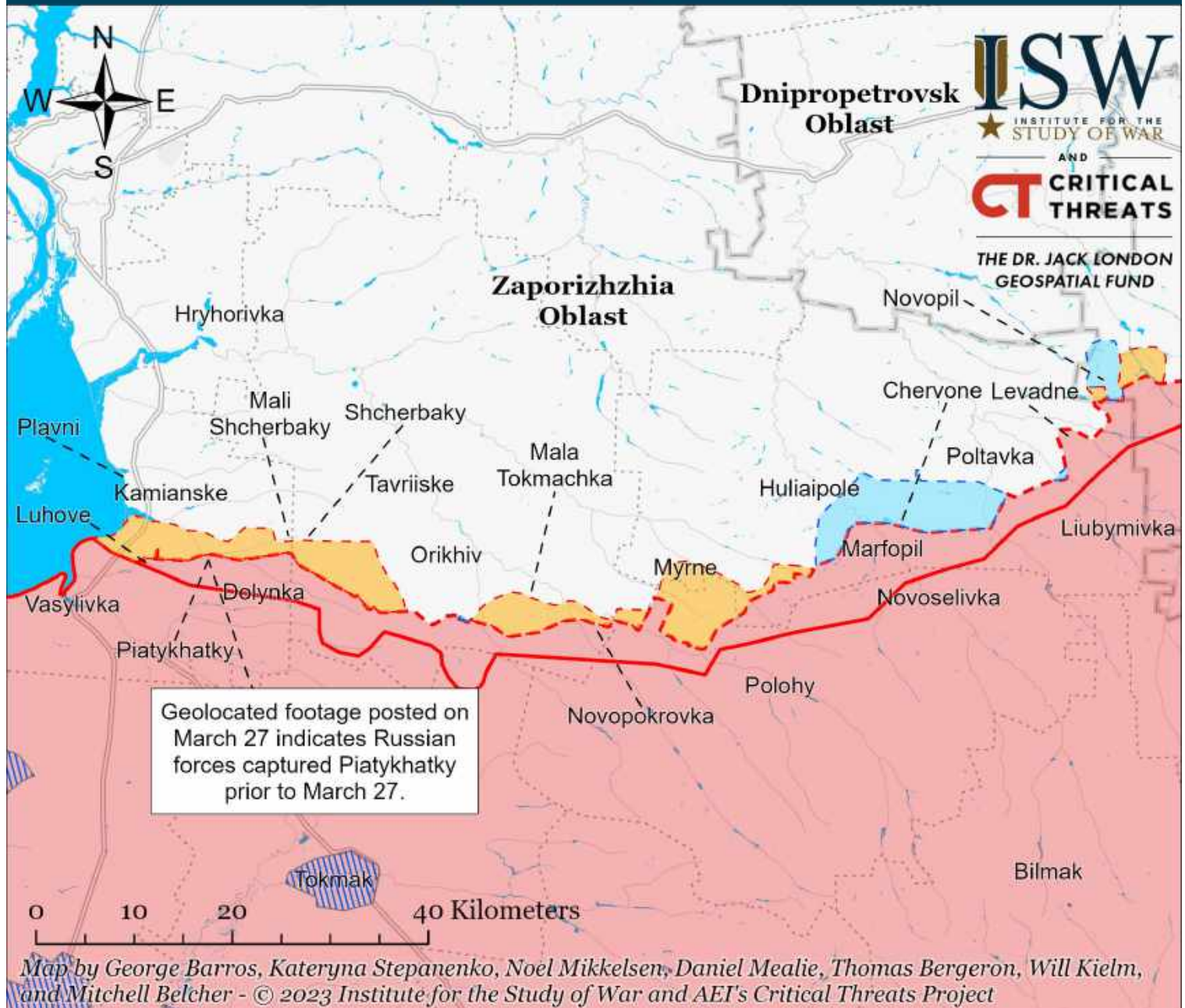
* Assessed Russian advances are areas where ISW assesses Russian forces have operated in or launched attacks against but do not control.

Assessed Control of Terrain Around Kherson and Mykolaiv as of March 30, 2023, 3:00 PM ET



* Assessed Russian advances are areas where ISW assesses Russian forces have operated in or launched attacks against but do not control.

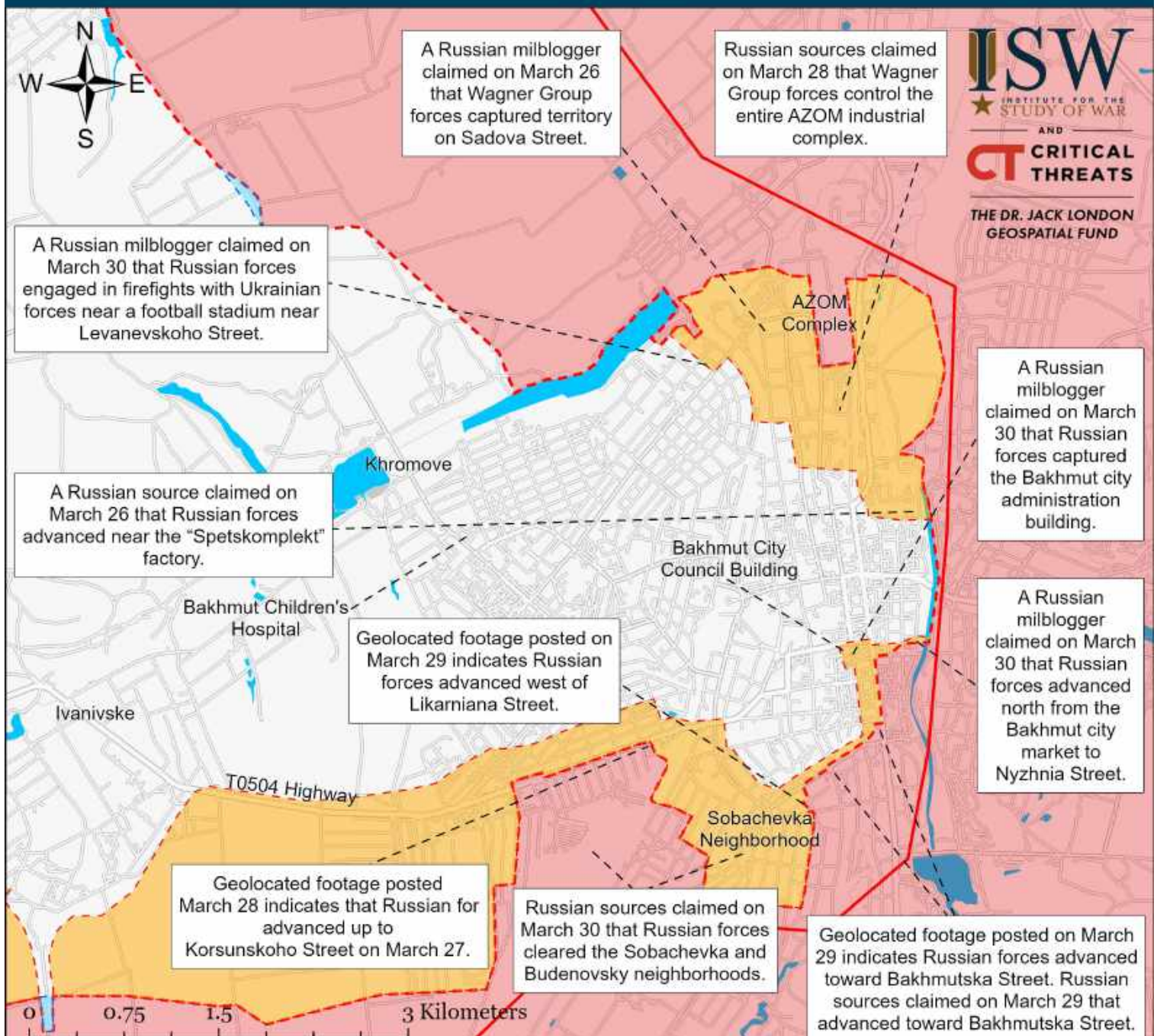
Assessed Control of Terrain Around Zaporizhia as of March 30, 2023, 3:00 PM ET



- Significant Fighting in the past 24 Hours
- Assessed Russian-controlled Ukrainian Territory
- Reported Ukrainian Partisan Warfare
- Russian-controlled Ukrainian Territory before February 24
- Claimed Russian Control over Ukrainian Territory
- Assessed Russian Advances in Ukraine*
- Claimed Ukrainian Counteroffensives

* Assessed Russian advances are areas where ISW assesses Russian forces have operated in or launched attacks against but do not control.

Assessed Control of Terrain in Bakhmut as of March 30, 2023, 3:00 PM ET

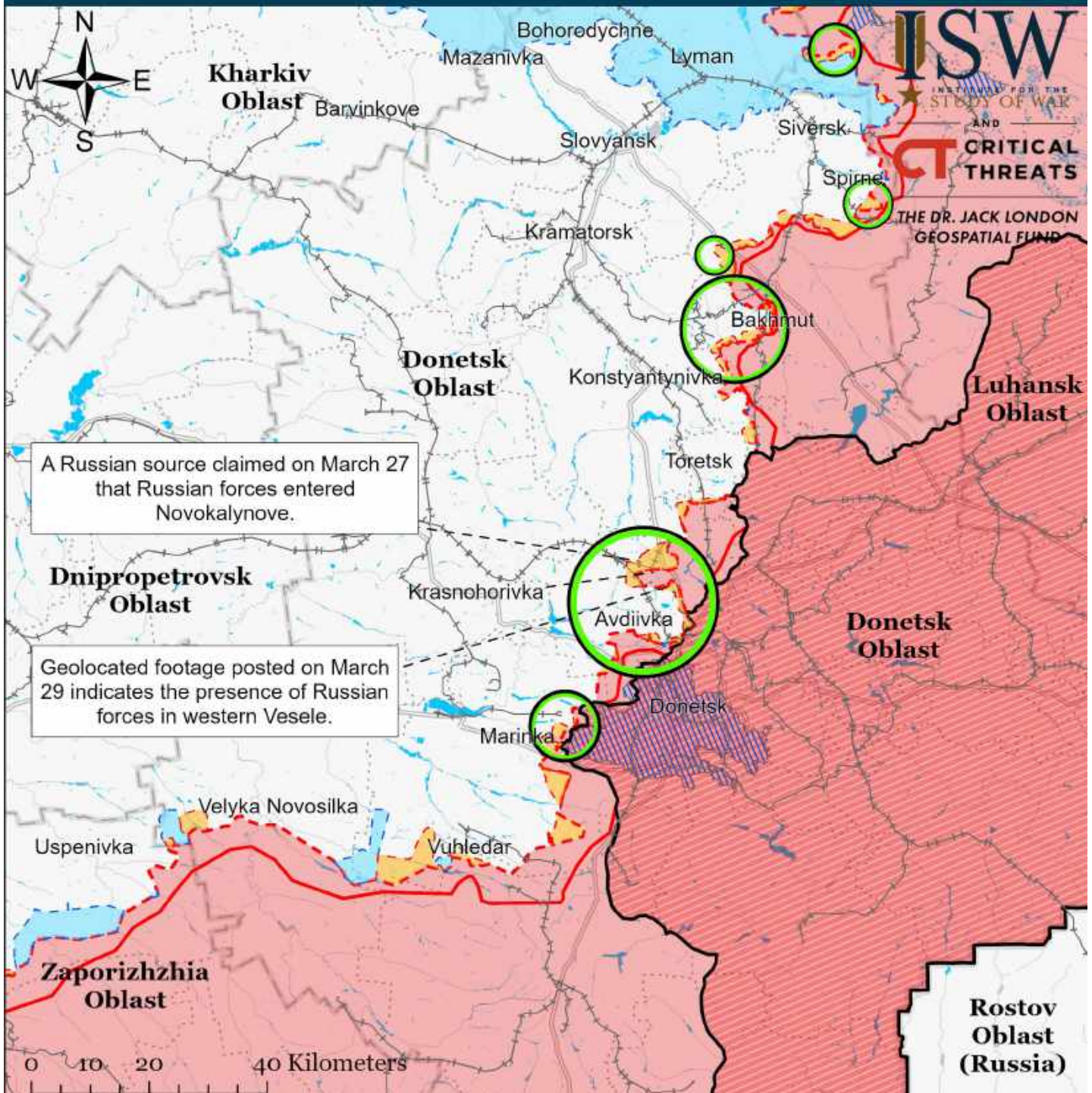


Map by George Barros, Kateryna Stepanenko, Noel Mikkelsen, Daniel Mealie, Thomas Bergeron, Will Kiehl, and Mitchell Belcher
© 2023 Institute for the Study of War and AEI's Critical Threats Project

- | | | |
|---|--|-------------------------------------|
| Significant Fighting in the past 24 Hours | Assessed Russian-controlled Ukrainian Territory | Claimed Ukrainian Counteroffensives |
| Assessed Russian Advances in Ukraine* | Claimed Russian Control over Ukrainian Territory | Reported Ukrainian Partisan Warfare |

* Assessed Russian advances are areas where ISW assesses Russian forces have operated in or launched attacks against but do not control.

Assessed Control of Terrain Around Donetsk as of March 30, 2023, 3:00 PM ET

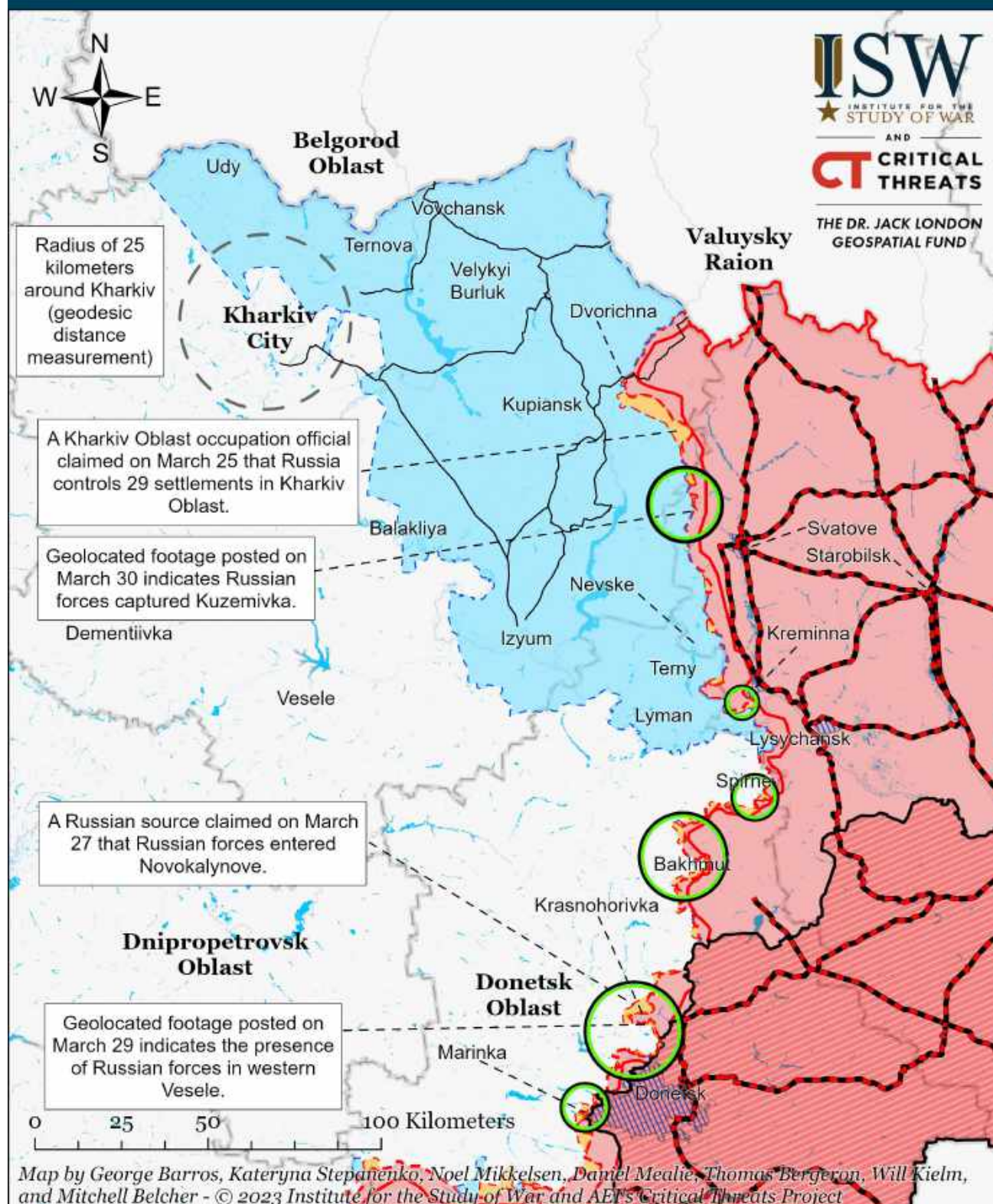


Map by George Barros, Kateryna Stepanenko, Noel Mikkelsen, Daniel Mealie, Thomas Bergeron, Will Kiern, and Mitchell Belcher - © 2023 Institute for the Study of War and AEI's Critical Threats Project

- | | | |
|---|--|-------------------------------------|
| Significant Fighting in the past 24 Hours | Assessed Russian-controlled Ukrainian Territory | Major Railroads |
| Russian-controlled Ukrainian Territory before February 24 | Claimed Russian Control over Ukrainian Territory | Reported Ukrainian Partisan Warfare |
| Assessed Russian Advances in Ukraine* | Claimed Ukrainian Counteroffensives | |

* Assessed Russian advances are areas where ISW assesses Russian forces have operated in or launched attacks against but do not control.

Assessed Control of Terrain Around Kharkiv as of March 30, 2023, 3:00 PM ET



- Significant Fighting in the past 24 Hours
- Key Ukrainian Roads
- Russian Ground Lines of Communication
- Russian-controlled Ukrainian Territory before February 24
- - - Assessed Russian Advances in Ukraine*
- Assessed Russian-controlled Ukrainian Territory
- Claimed Russian Control over Ukrainian Territory
- Claimed Ukrainian Counteroffensives
- Reported Ukrainian Partisan Warfare

* Assessed Russian advances are areas where ISW assesses Russian forces have operated in or launched attacks against but do not control.

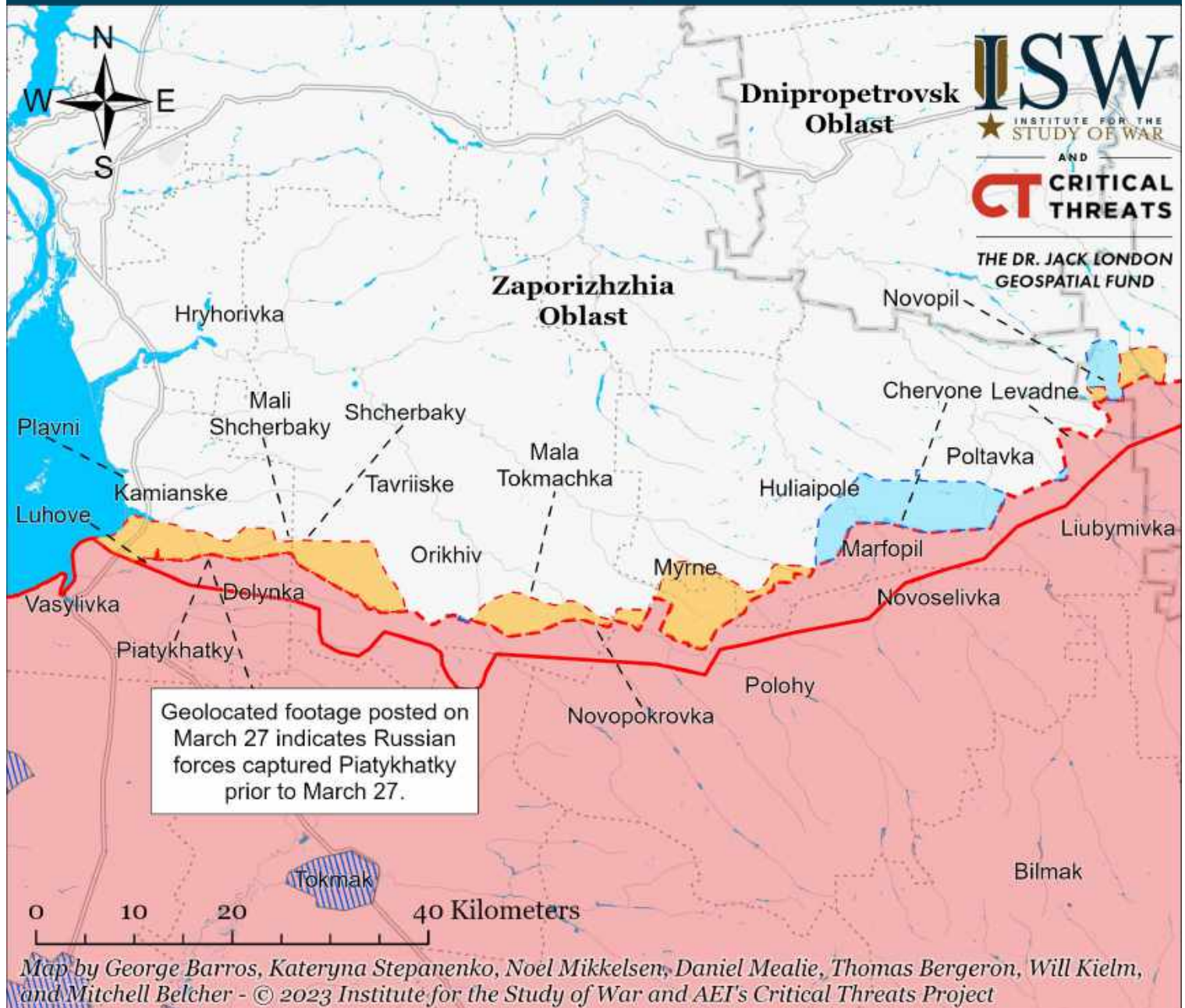
Assessed Control of Terrain in Ukraine and Main Russian Maneuver Axes as of March 30, 2023, 3:00 PM ET



Map by George Barros, Kateryna Stepanenko, Noel Mikkelsen, Daniel Mealie, Thomas Bergeron, Will Kielm, and Mitchell Belcher - © 2023 Institute for the Study of War and AEI's Critical Threats Project

* Assessed Russian advances are areas where ISW assesses Russian forces have operated in or launched attacks against but do not control.

Assessed Control of Terrain Around Zaporizhzhia as of March 29, 2023, 3:00 PM ET



- Significant Fighting in the past 24 Hours
- Assessed Russian-controlled Ukrainian Territory
- ▨ Reported Ukrainian Partisan Warfare
- Russian-controlled Ukrainian Territory before February 24
- Claimed Russian Control over Ukrainian Territory
- - - Assessed Russian Advances in Ukraine*
- Claimed Ukrainian Counteroffensives

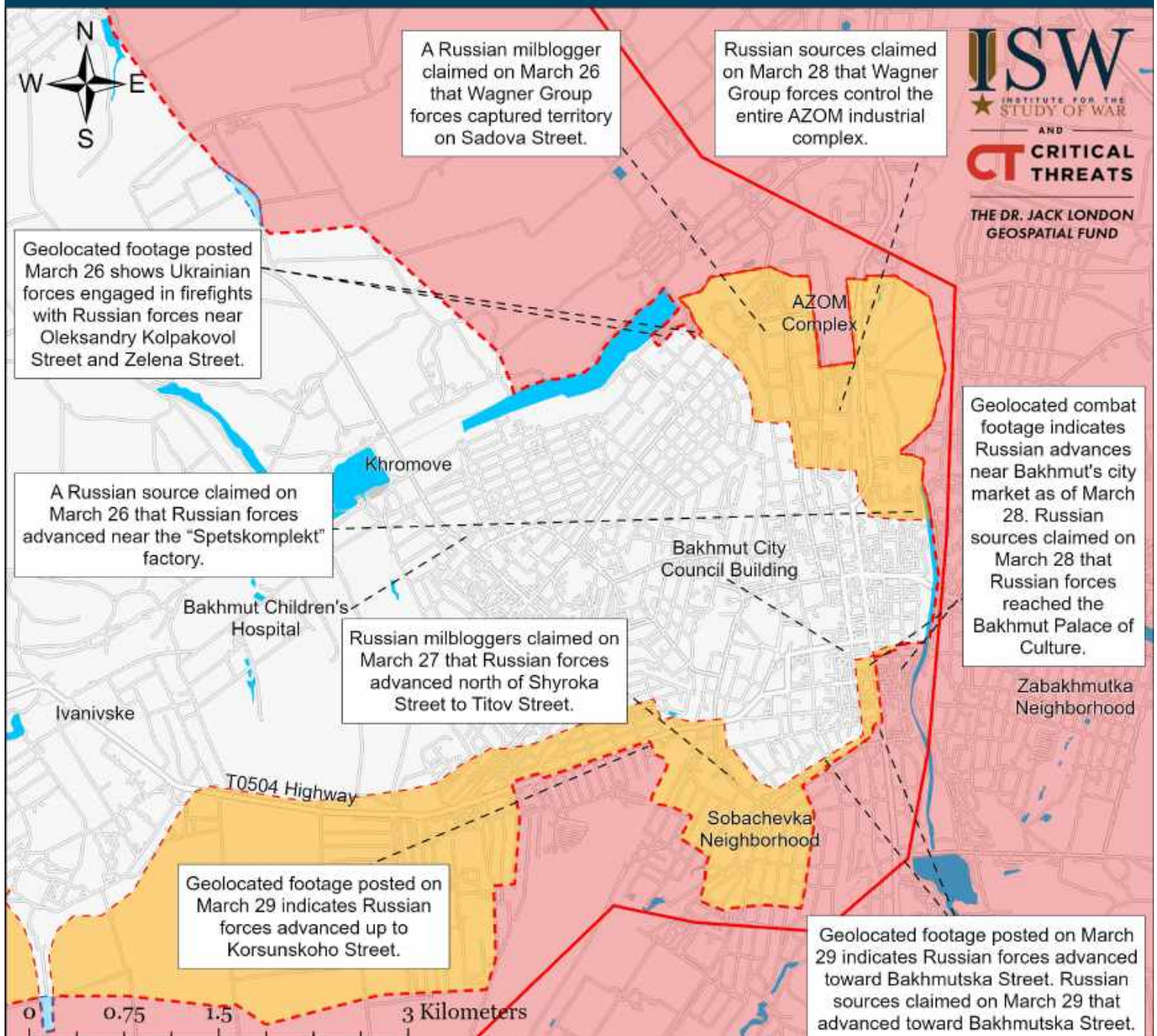
* Assessed Russian advances are areas where ISW assesses Russian forces have operated in or launched attacks against but do not control.

Assessed Control of Terrain Around Kherson and Mykolaiv as of March 29, 2023, 3:00 PM ET



* Assessed Russian advances are areas where ISW assesses Russian forces have operated in or launched attacks against but do not control.

Assessed Control of Terrain in Bakhmut as of March 29, 2023, 3:00 PM ET

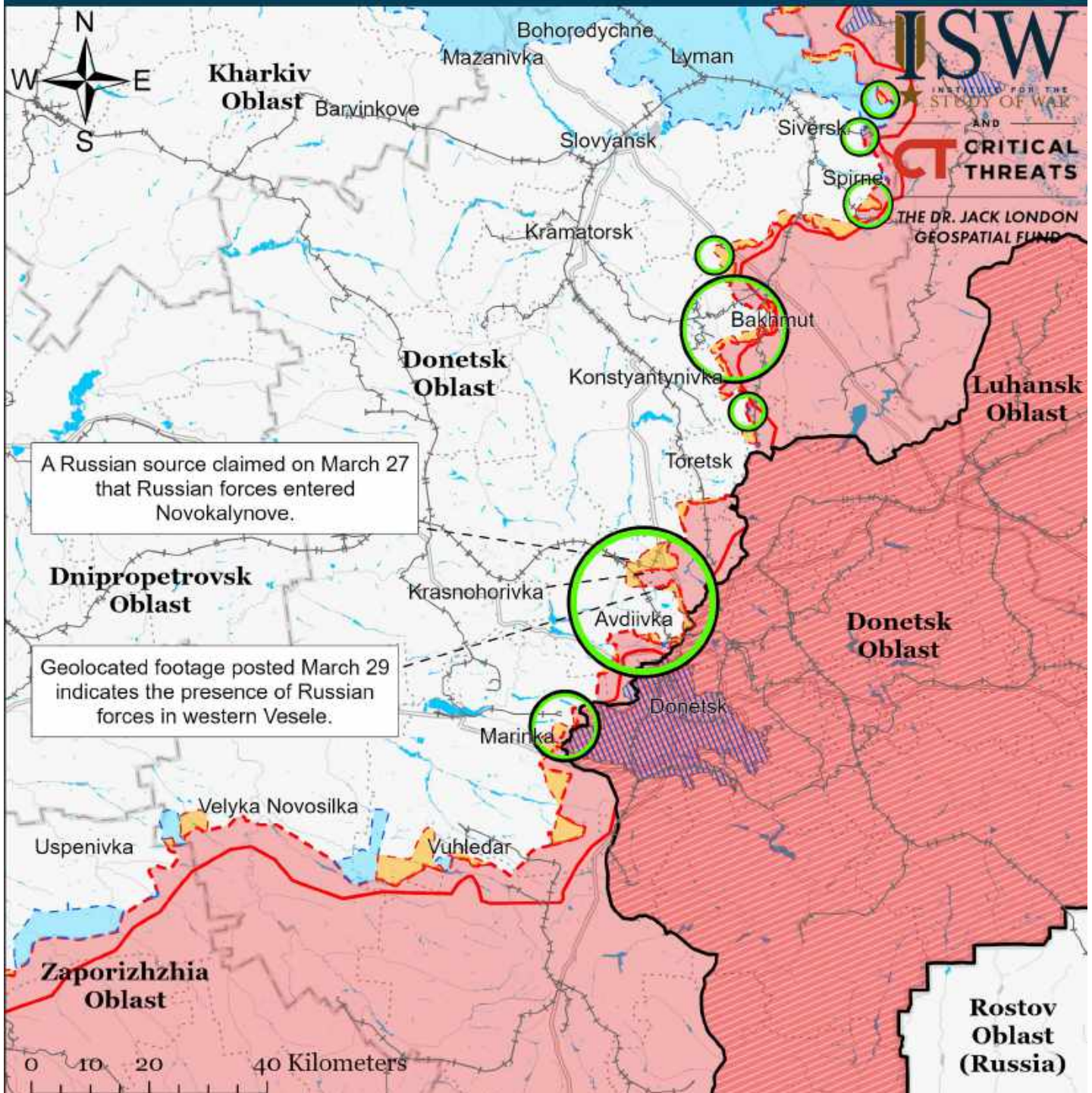


Map by George Barros, Kateryna Stepanenko, Noel Mikkelsen, Daniel Mealie, Thomas Bergeron, Will Kiehm, and Mitchell Belcher
© 2023 Institute for the Study of War and AEI's Critical Threats Project

- | | | |
|---|--|-------------------------------------|
| Significant Fighting in the past 24 Hours | Assessed Russian-controlled Ukrainian Territory | Claimed Ukrainian Counteroffensives |
| Assessed Russian Advances in Ukraine* | Claimed Russian Control over Ukrainian Territory | Reported Ukrainian Partisan Warfare |

* Assessed Russian advances are areas where ISW assesses Russian forces have operated in or launched attacks against but do not control.

Assessed Control of Terrain Around Donetsk as of March 29, 2023, 3:00 PM ET

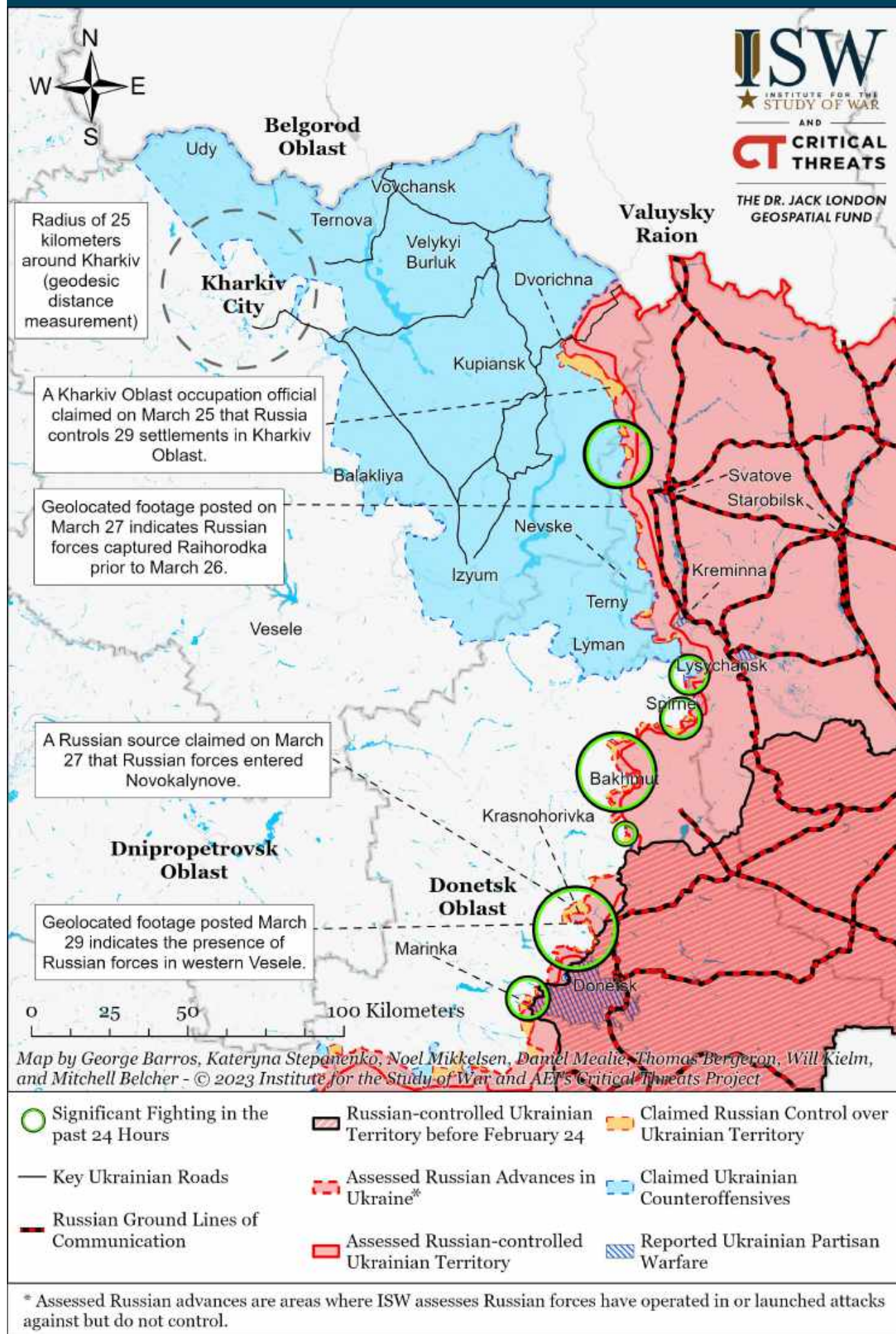


Map by George Barros, Kateryna Stepanenko, Noel Mikkelsen, Daniel Mealie, Thomas Bergeron, Will Kiern, and Mitchell Belcher - © 2023 Institute for the Study of War and AEI's Critical Threats Project

- Significant Fighting in the past 24 Hours
- Russian-controlled Ukrainian Territory before February 24
- Assessed Russian Advances in Ukraine*
- Assessed Russian-controlled Ukrainian Territory
- Claimed Russian Control over Ukrainian Territory
- Claimed Ukrainian Counteroffensives
- Major Railroads
- Reported Ukrainian Partisan Warfare

* Assessed Russian advances are areas where ISW assesses Russian forces have operated in or launched attacks against but do not control.

Assessed Control of Terrain Around Kharkiv as of March 29, 2023, 3:00 PM ET



Assessed Control of Terrain in Ukraine and Main Russian Maneuver Axes as of March 29, 2023, 3:00 PM ET



Map by George Barros, Kateryna Stepanenko, Noel Mikkelsen, Daniel Mealie, Thomas Bergeron, Will Kielm, and Mitchell Belcher - © 2023 Institute for the Study of War and AEI's Critical Threats Project

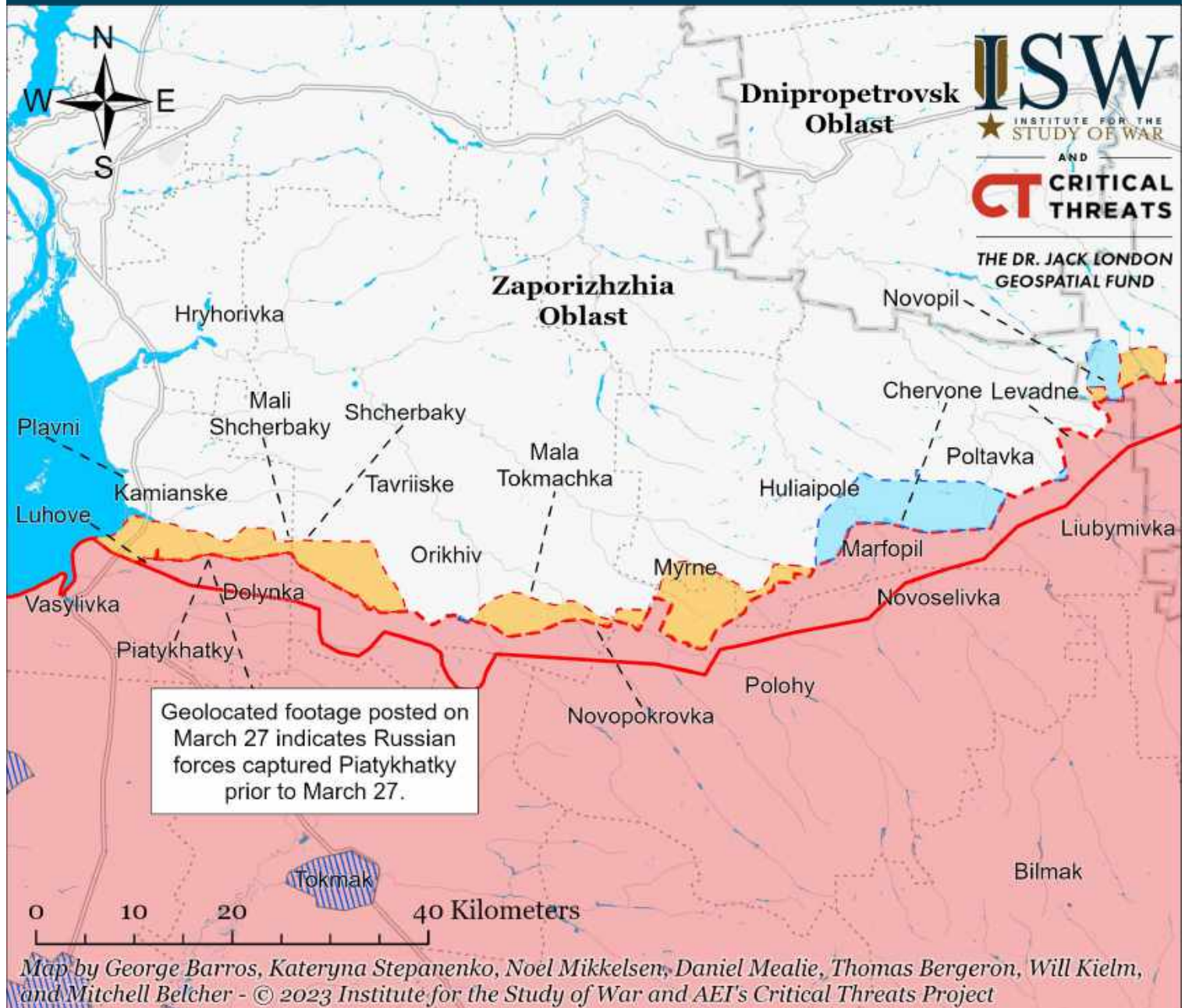
* Assessed Russian advances are areas where ISW assesses Russian forces have operated in or launched attacks against but do not control.

Assessed Control of Terrain Around Kherson and Mykolaiv as of March 28, 2023, 3:00 PM ET



* Assessed Russian advances are areas where ISW assesses Russian forces have operated in or launched attacks against but do not control.

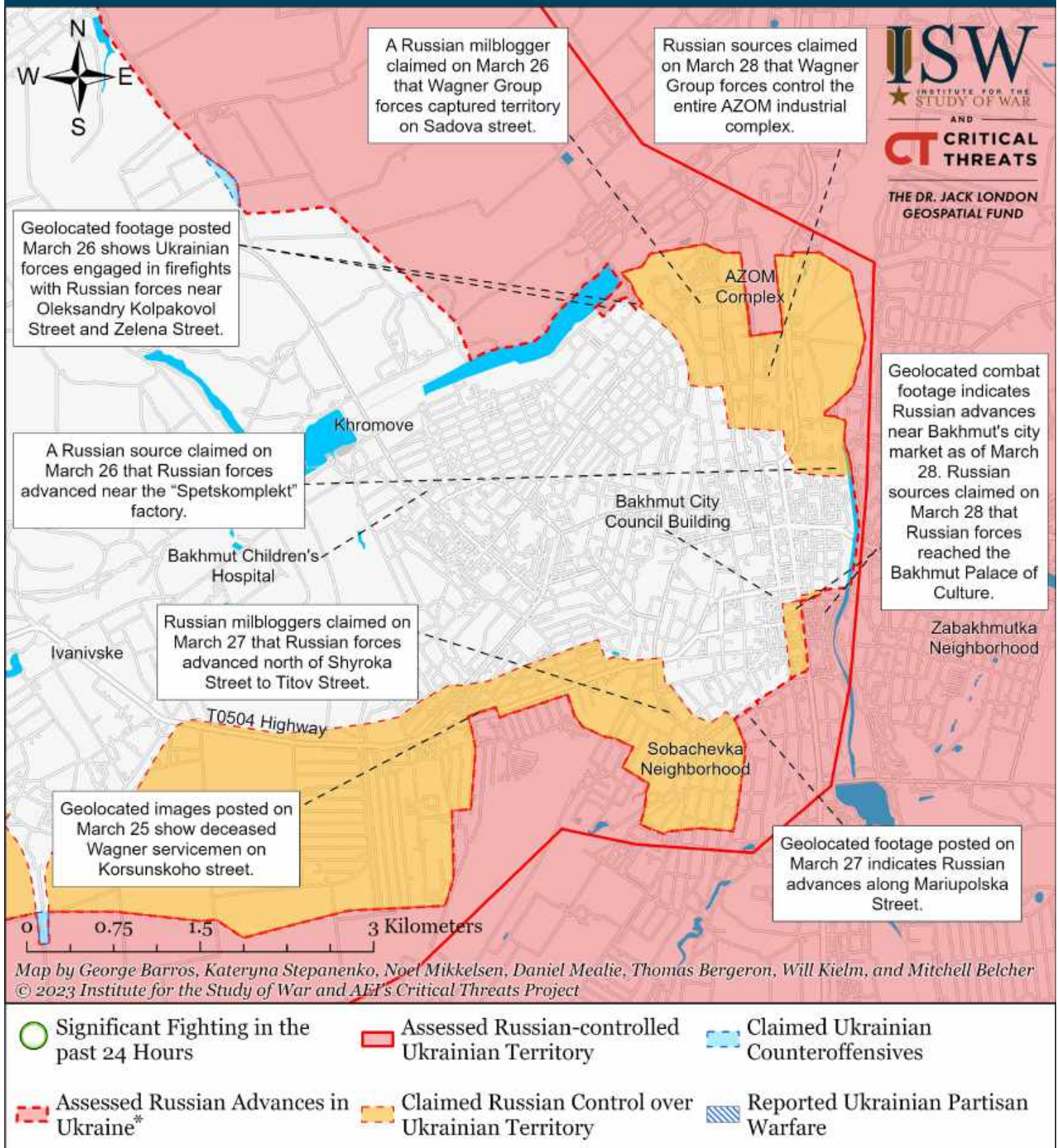
Assessed Control of Terrain Around Zaporizhzhia as of March 28, 2023, 3:00 PM ET



- Significant Fighting in the past 24 Hours
- Assessed Russian-controlled Ukrainian Territory
- Reported Ukrainian Partisan Warfare
- Russian-controlled Ukrainian Territory before February 24
- Claimed Russian Control over Ukrainian Territory
- - - Assessed Russian Advances in Ukraine*
- Claimed Ukrainian Counteroffensives

* Assessed Russian advances are areas where ISW assesses Russian forces have operated in or launched attacks against but do not control.

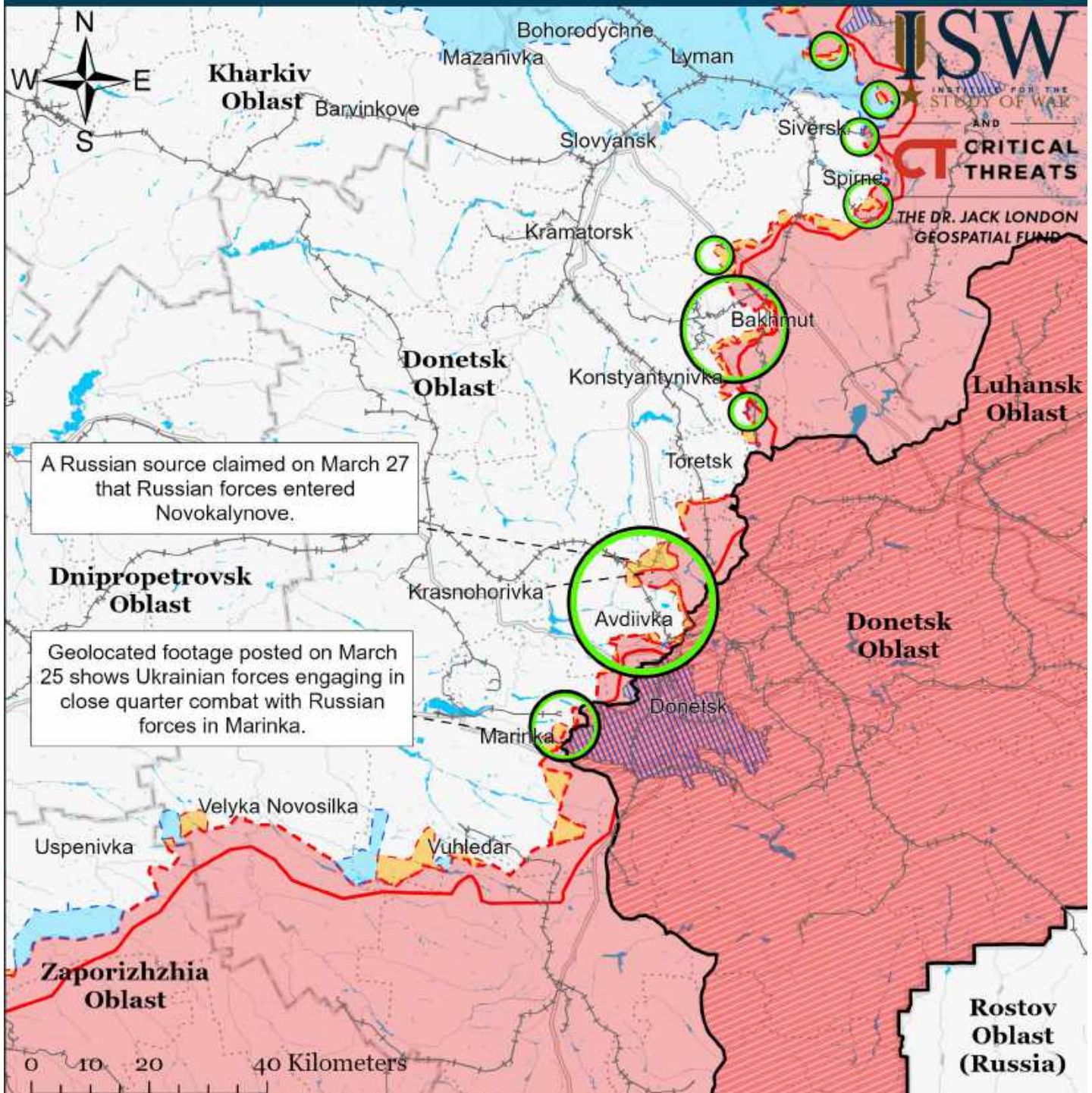
Assessed Control of Terrain in Bakhmut as of March 28, 2023, 3:00 PM ET



Map by George Barros, Kateryna Stepanenko, Noel Mikkelsen, Daniel Mealie, Thomas Bergeron, Will Kiehl, and Mitchell Belcher
© 2023 Institute for the Study of War and AEI's Critical Threats Project

* Assessed Russian advances are areas where ISW assesses Russian forces have operated in or launched attacks against but do not control.

Assessed Control of Terrain Around Donetsk as of March 28, 2023, 3:00 PM ET

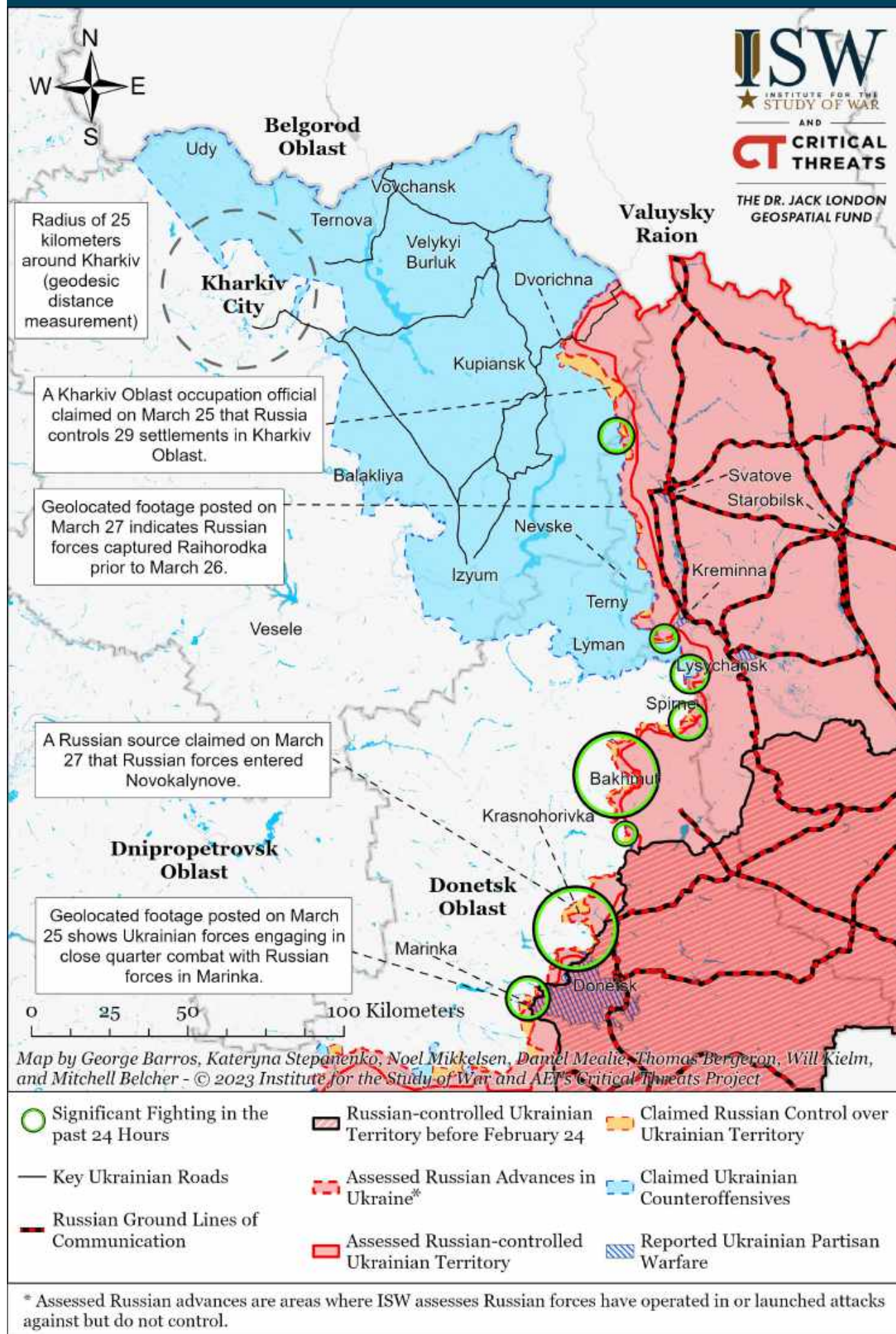


Map by George Barros, Kateryna Stepanenko, Noel Mikkelsen, Daniel Mealie, Thomas Bergeron, Will Kiern, and Mitchell Belcher - © 2023 Institute for the Study of War and AEI's Critical Threats Project

- | | | |
|---|--|-------------------------------------|
| Significant Fighting in the past 24 Hours | Assessed Russian-controlled Ukrainian Territory | Major Railroads |
| Russian-controlled Ukrainian Territory before February 24 | Claimed Russian Control over Ukrainian Territory | Reported Ukrainian Partisan Warfare |
| Assessed Russian Advances in Ukraine* | Claimed Ukrainian Counteroffensives | |

* Assessed Russian advances are areas where ISW assesses Russian forces have operated in or launched attacks against but do not control.

Assessed Control of Terrain Around Kharkiv as of March 28, 2023, 3:00 PM ET



Assessed Control of Terrain in Ukraine and Main Russian Maneuver Axes as of March 28, 2023, 3:00 PM ET



Map by George Barros, Kateryna Stepanenko, Noel Mikkelsen, Daniel Mealie, Thomas Bergeron, Will Kielm, and Mitchell Belcher - © 2023 Institute for the Study of War and AEI's Critical Threats Project

* Assessed Russian advances are areas where ISW assesses Russian forces have operated in or launched attacks against but do not control.