

Assessed Control of Terrain in Ukraine and Main Russian Maneuver Axes as of June 5, 2023, 3:00 PM ET



Map by George Barros, Kateryna Stepanenko, Noel Mikkelsen, Daniel Mealie, Thomas Bergeron, and Mitchell Belcher - © 2023 Institute for the Study of War and AEI's Critical Threats Project

* Assessed Russian advances are areas where ISW assesses Russian forces have operated in or launched attacks against but do not control.

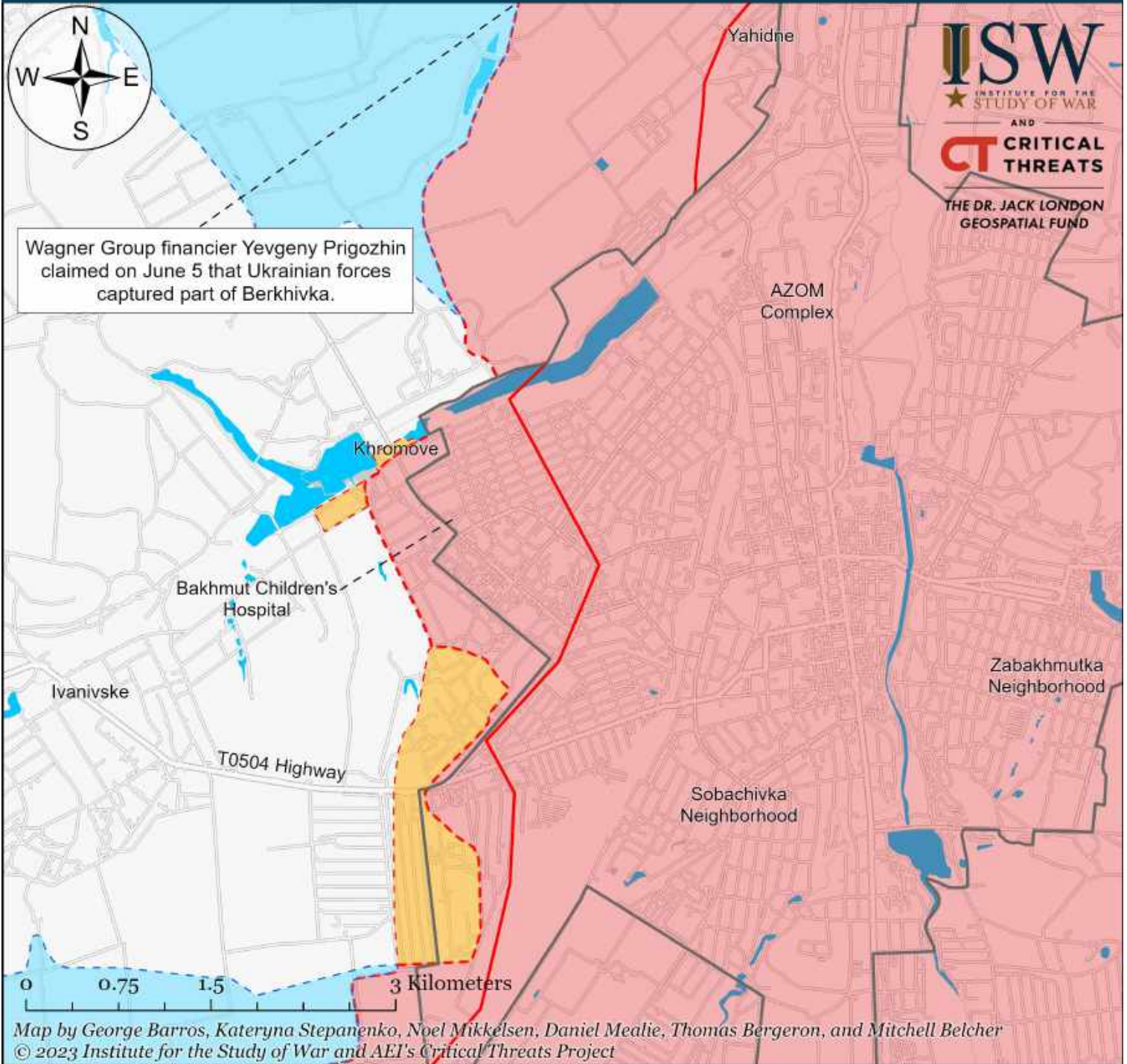
Note: The Ukrainian counteroffensive layer displays areas previously assigned to the Russian control, Russian advances, or Russian claims layers where ISW now assesses that Ukrainian forces have established a presence beyond a short-term raid. Inclusion of an area on this layer does not imply that ISW assesses that the area is part of any upcoming Ukrainian counteroffensive operation.

Assessed Control of Terrain in Bakhmut as of June 5, 2023, 3:00 PM ET



ISW
INSTITUTE FOR THE
STUDY OF WAR
AND
CT CRITICAL
THREATS
THE DR. JACK LONDON
GEOSPATIAL FUND

Wagner Group financier Yevgeny Prigozhin claimed on June 5 that Ukrainian forces captured part of Berkhivka.



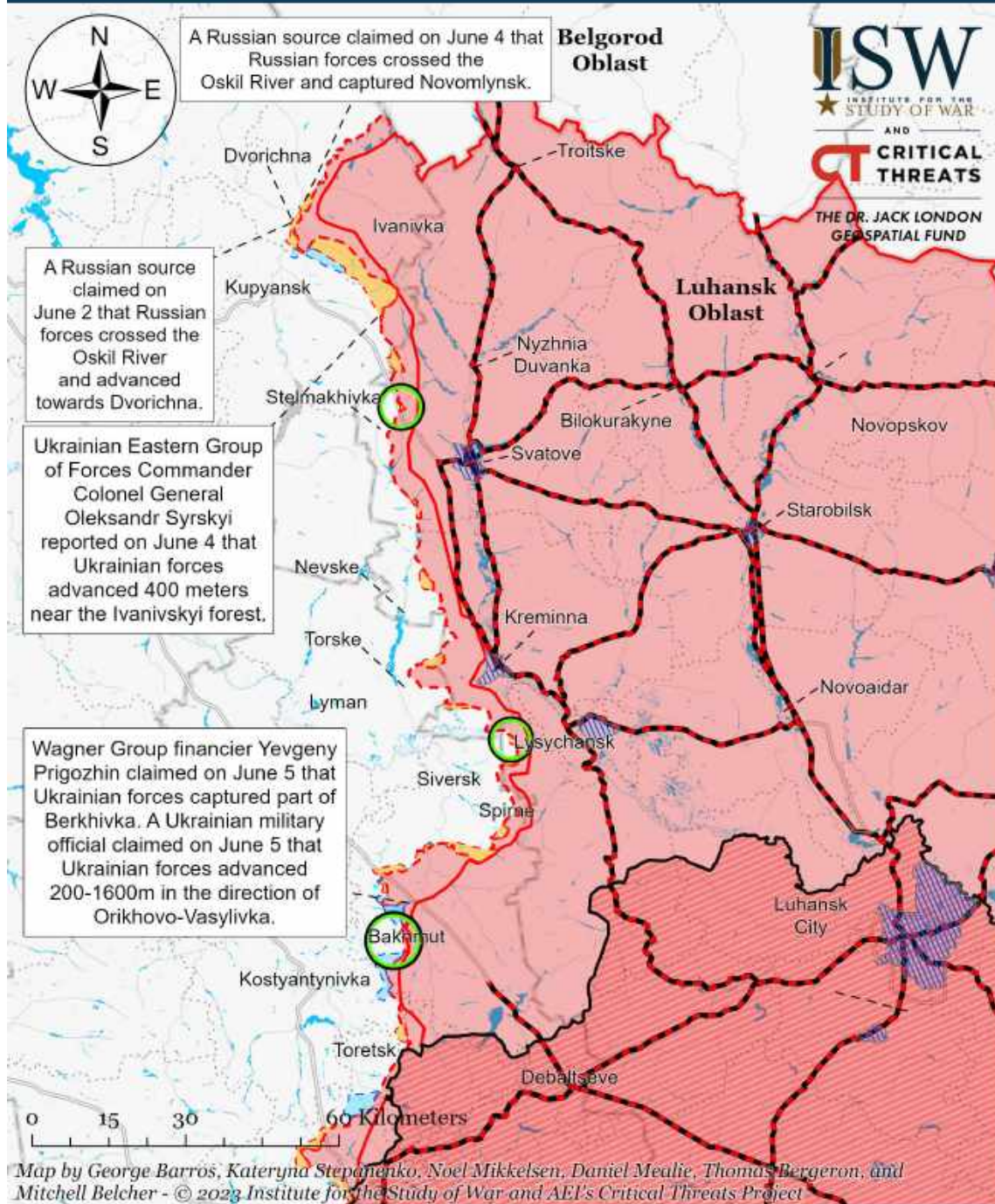
Map by George Barros, Kateryna Stepanenko, Noel Mikkelsen, Daniel Mealie, Thomas Bergeron, and Mitchell Belcher
© 2023 Institute for the Study of War and AEI's Critical Threats Project

- | | | |
|---------------------------------------|--|-------------------------------------|
| Bakhmut City Limits | Assessed Russian-controlled Ukrainian Territory | Claimed Ukrainian Counteroffensives |
| Assessed Russian Advances in Ukraine* | Claimed Russian Control over Ukrainian Territory | Reported Ukrainian Partisan Warfare |

* Assessed Russian advances are areas where ISW assesses Russian forces have operated in or launched attacks against but do not control.

Note: The Ukrainian counteroffensive layer displays areas previously assigned to the Russian control, Russian advances, or Russian claims layers where ISW now assesses that Ukrainian forces have established a presence beyond a short-term raid. Inclusion of an area on this layer does not imply that ISW assesses that the area is part of any upcoming Ukrainian counteroffensive operation.

Assessed Control of Terrain Around Luhansk Oblast as of June 5, 2023, 3:00 PM ET

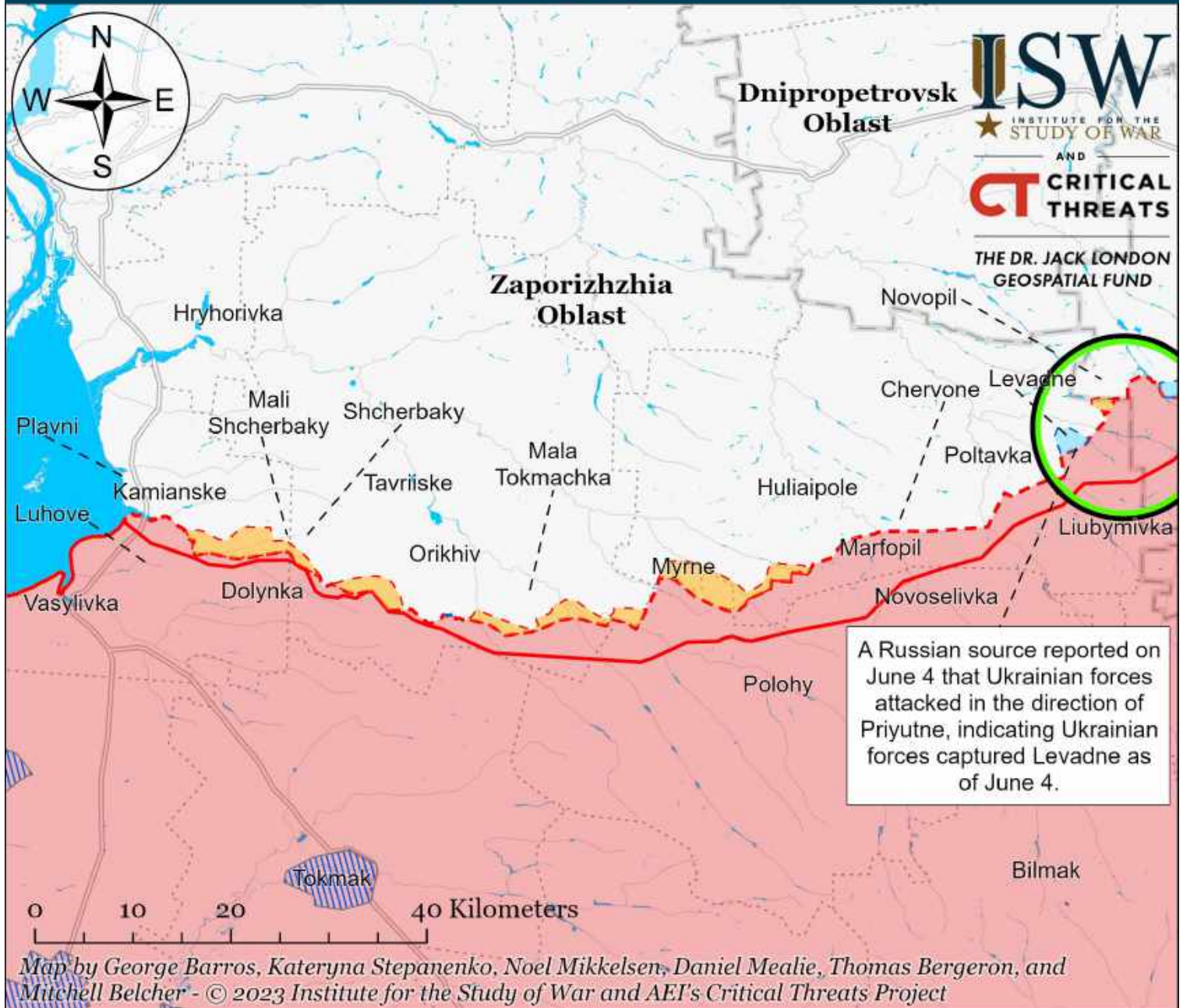


- Significant Fighting in the past 24 Hours
- Russian Ground Lines of Communication
- Russian-controlled Ukrainian Territory before February 24
- Assessed Russian Advances in Ukraine*
- Assessed Russian-controlled Ukrainian Territory
- Claimed Russian Control over Ukrainian Territory
- Claimed Ukrainian Counteroffensives
- Reported Ukrainian Partisan Warfare

* Assessed Russian advances are areas where ISW assesses Russian forces have operated in or launched attacks against but do not control.

Note: The Ukrainian counteroffensive layer displays areas previously assigned to the Russian control, Russian advances, or Russian claims layers where ISW now assesses that Ukrainian forces have established a presence beyond a short-term raid. Inclusion of an area on this layer does not imply that ISW assesses that the area is part of any upcoming Ukrainian counteroffensive operation. While Ukrainian military official's report of a 200 to 1600 meter Ukrainian advance in the direction of Orikhovo-Vasylivka on June 5 indicate a Ukrainian advance around Bakhmut, ISW cannot assess the exact shape of the Ukrainian advance based on their reports. While ISW does not have enough evidence to fully map the Ukrainian military official's directions, they are consistent with Yevgeny Prigozhin's reports about Berkhivka.

Assessed Control of Terrain Around Zaporizhia as of June 5, 2023, 3:00 PM ET

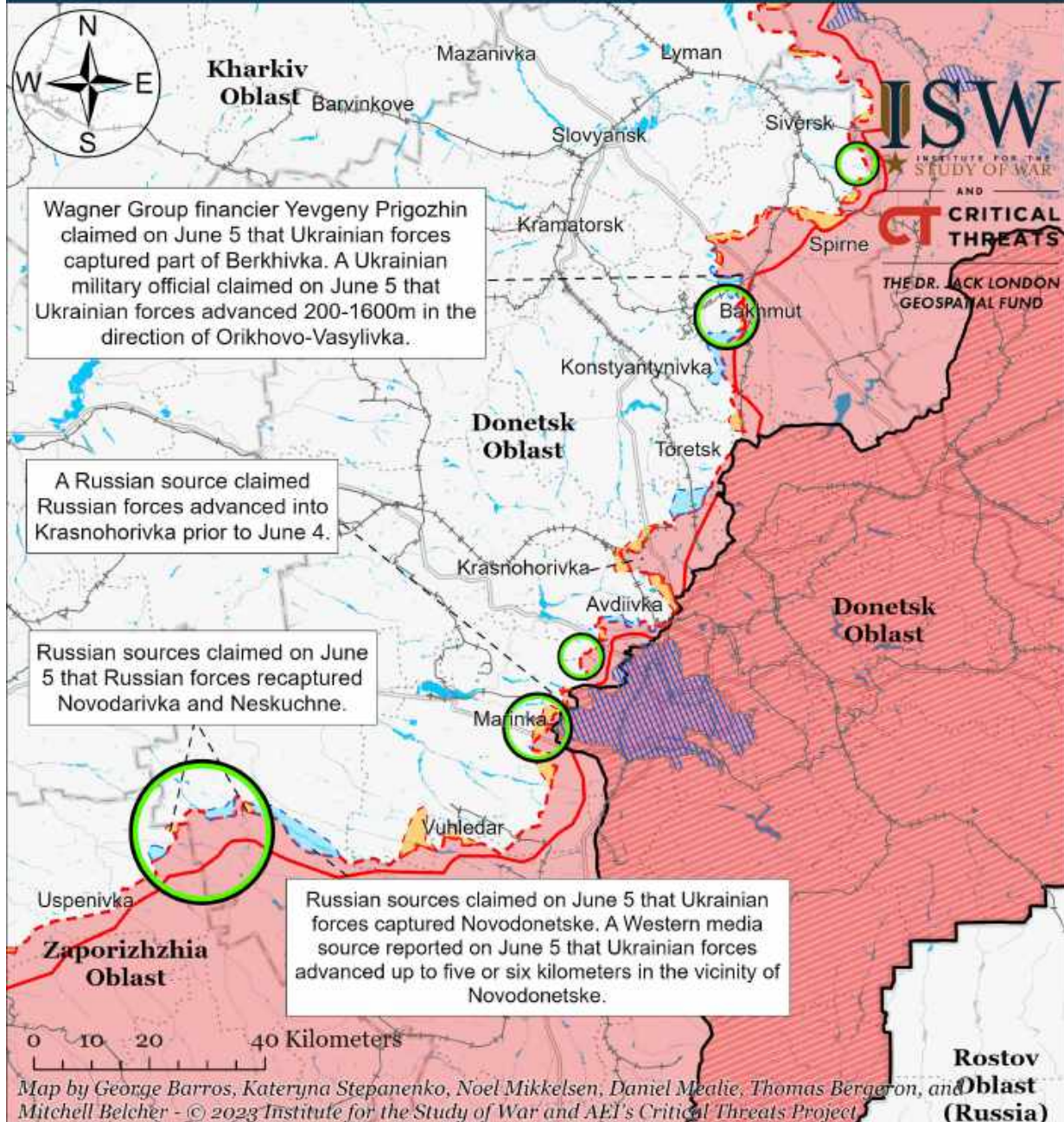


- Significant Fighting in the past 24 Hours
- Assessed Russian-controlled Ukrainian Territory
- Claimed Russian Control over Ukrainian Territory
- Russian-controlled Ukrainian Territory before February 24
- Assessed Russian Advances in Ukraine*
- Claimed Ukrainian Counteroffensives
- Reported Ukrainian Partisan Warfare

* Assessed Russian advances are areas where ISW assesses Russian forces have operated in or launched attacks against but do not control.

Note: The Ukrainian counteroffensive layer displays areas previously assigned to the Russian control, Russian advances, or Russian claims layers where ISW now assesses that Ukrainian forces have established a presence beyond a short-term raid. Inclusion of an area on this layer does not imply that ISW assesses that the area is part of any upcoming Ukrainian counteroffensive operation.

Assessed Control of Terrain Around Donetsk as of June 5, 2023, 3:00 PM ET

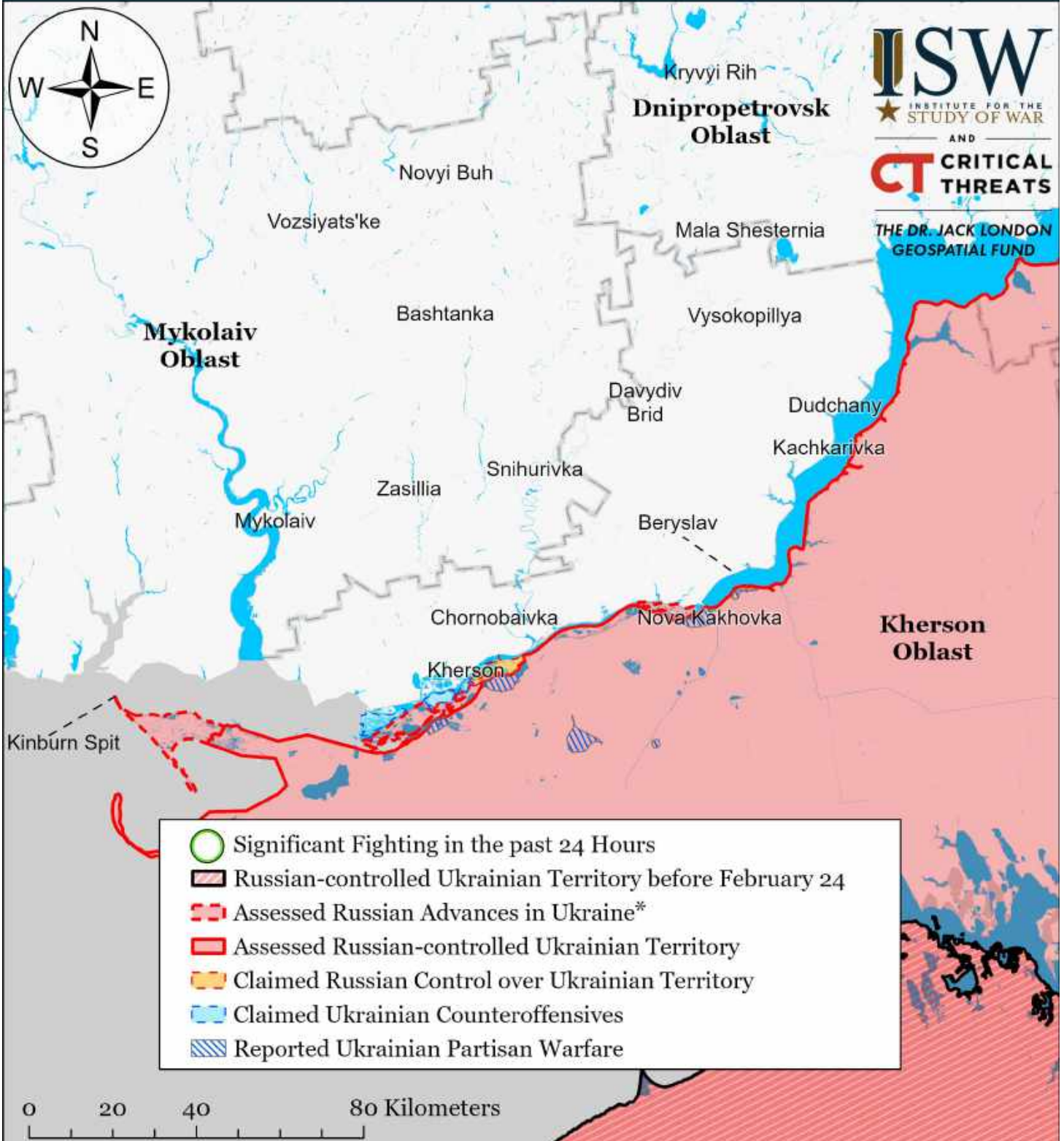


- Significant Fighting in the past 24 Hours
- Assessed Russian-controlled Ukrainian Territory
- Russian-controlled Ukrainian Territory before February 24
- Assessed Russian Advances in Ukraine*
- Claimed Russian Control over Ukrainian Territory
- Claimed Ukrainian Counteroffensives
- Major Railroads
- Reported Ukrainian Partisan Warfare

* Assessed Russian advances are areas where ISW assesses Russian forces have operated in or launched attacks against but do not control.

Note: The Ukrainian counteroffensive layer displays areas previously assigned to the Russian control, Russian advances, or Russian claims layers where ISW now assesses that Ukrainian forces have established a presence beyond a short-term raid. Inclusion of an area on this layer does not imply that ISW assesses that the area is part of any upcoming Ukrainian counteroffensive operation. While Ukrainian military official's report of a 200 to 1600 meter Ukrainian advance in the direction of Orikhovo-Vasylivka on June 5 indicate a Ukrainian advance around Bakhmut, ISW cannot assess the exact shape of the Ukrainian advance based on their reports. While ISW does not have enough evidence to fully map the Ukrainian military official's directions, they are consistent with Yevgeny Prigozhin's reports about Berkhivka.

Assessed Control of Terrain Around Kherson and Mykolaiv as of June 5, 2023, 3:00 PM ET



Map by George Barros, Kateryna Stepanenko, Noel Mikkelsen, Daniel Mealie, Thomas Bergeron, and Mitchell Belcher - © 2023 Institute for the Study of War and AET's Critical Threats Project

* Assessed Russian advances are areas where ISW assesses Russian forces have operated in or launched attacks against but do not control.

Note: The Ukrainian counteroffensive layer displays areas previously assigned to the Russian control, Russian advances, or Russian claims layers where ISW now assesses that Ukrainian forces have established a presence beyond a short-term raid. Inclusion of an area on this layer does not imply that ISW assesses that the area is part of any upcoming Ukrainian counteroffensive operation.

Assessed Control of Terrain in Ukraine and Main Russian Maneuver Axes as of June 4, 2023, 3:00 PM ET

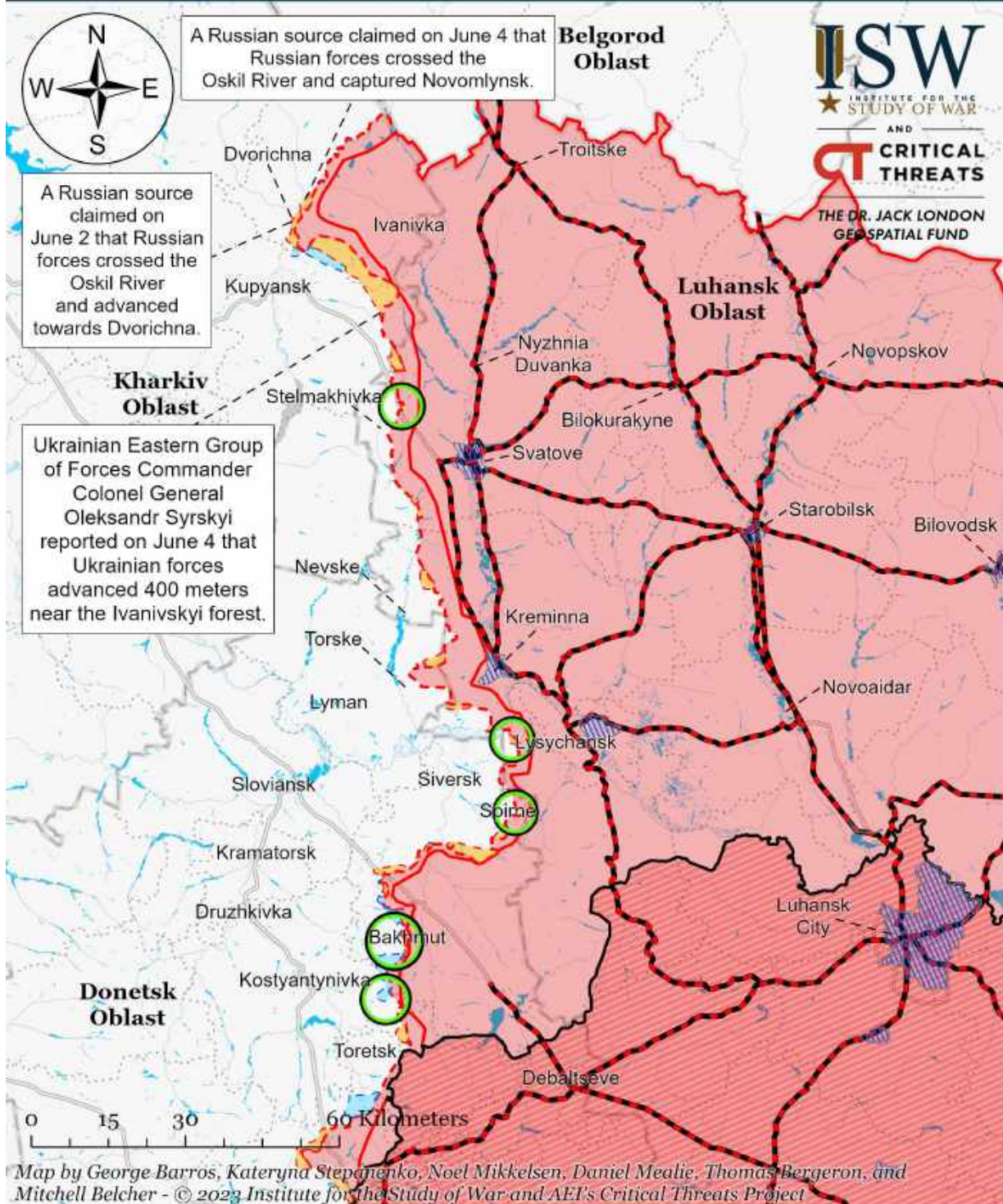


Map by George Barros, Kateryna Stepanenko, Noel Mikkelsen, Daniel Mealie, Thomas Bergeron, and Mitchell Belcher - © 2023 Institute for the Study of War and AEI's Critical Threats Project

* Assessed Russian advances are areas where ISW assesses Russian forces have operated in or launched attacks against but do not control.

Note: The Ukrainian counteroffensive layer displays areas previously assigned to the Russian control, Russian advances, or Russian claims layers where ISW now assesses that Ukrainian forces have established a presence beyond a short-term raid. Inclusion of an area on this layer does not imply that ISW assesses that the area is part of any upcoming Ukrainian counteroffensive operation.

Assessed Control of Terrain Around Luhansk Oblast as of June 4, 2023, 3:00 PM ET

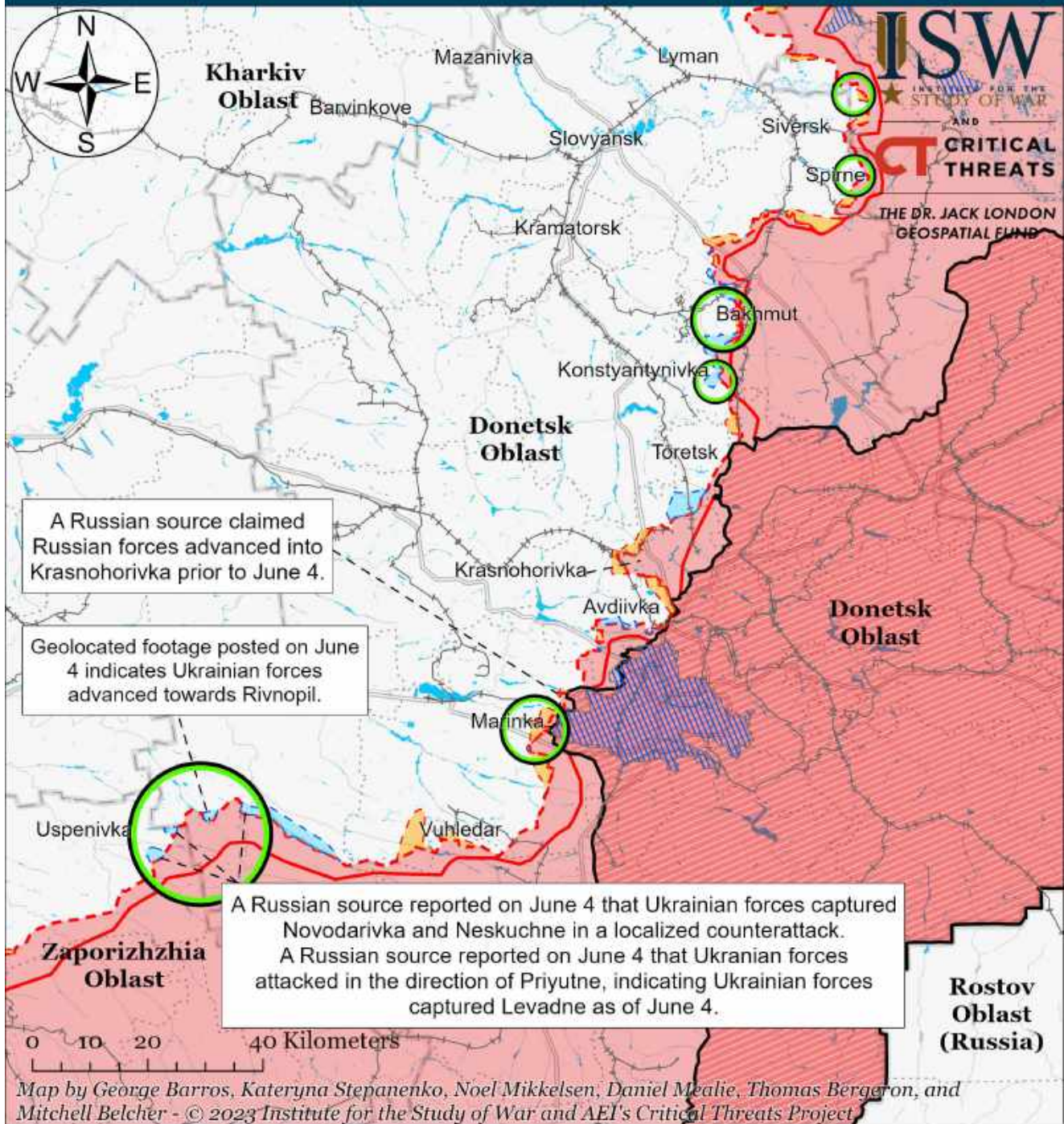


- Significant Fighting in the past 24 Hours
- - - Assessed Russian Advances in Ukraine*
- Claimed Ukrainian Counteroffensives
- Russian Ground Lines of Communication
- Assessed Russian-controlled Ukrainian Territory
- Reported Ukrainian Partisan Warfare
- Russian-controlled Ukrainian Territory before February 24
- Claimed Russian Control over Ukrainian Territory

* Assessed Russian advances are areas where ISW assesses Russian forces have operated in or launched attacks against but do not control.

Note: The Ukrainian counteroffensive layer displays areas previously assigned to the Russian control, Russian advances, or Russian claims layers where ISW now assesses that Ukrainian forces have established a presence beyond a short-term raid. Inclusion of an area on this layer does not imply that ISW assesses that the area is part of any upcoming Ukrainian counteroffensive operation.

Assessed Control of Terrain Around Donetsk as of June 4, 2023, 3:00 PM ET

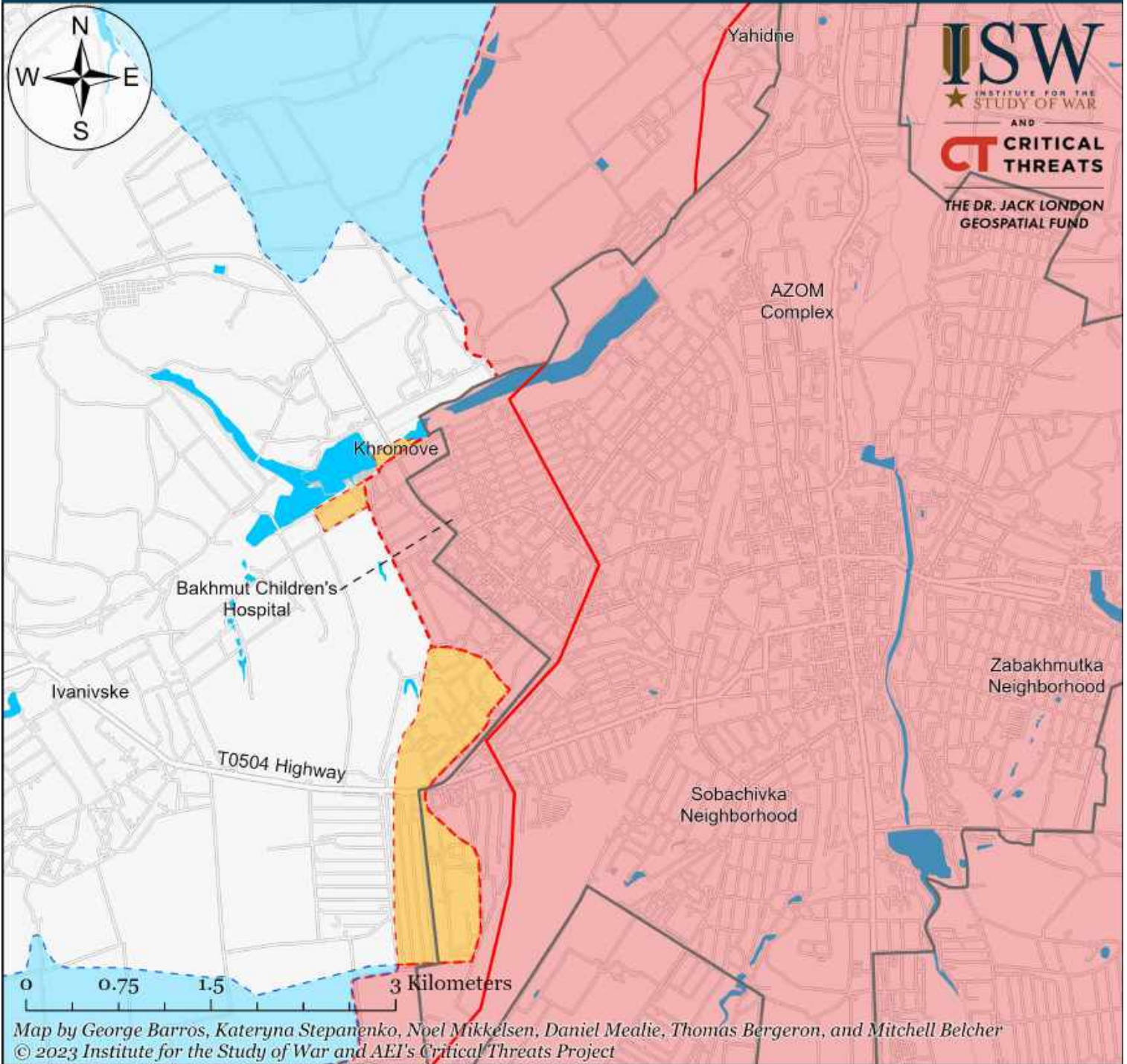


- Significant Fighting in the past 24 Hours
- Assessed Russian-controlled Ukrainian Territory
- Claimed Russian Control over Ukrainian Territory
- Assessed Russian Advances in Ukraine*
- Claimed Ukrainian Counteroffensives
- Reported Ukrainian Partisan Warfare
- Major Railroads

* Assessed Russian advances are areas where ISW assesses Russian forces have operated in or launched attacks against but do not control.

Note: The Ukrainian counteroffensive layer displays areas previously assigned to the Russian control, Russian advances, or Russian claims layers where ISW now assesses that Ukrainian forces have established a presence beyond a short-term raid. Inclusion of an area on this layer does not imply that ISW assesses that the area is part of any upcoming Ukrainian counteroffensive operation.

Assessed Control of Terrain in Bakhmut as of June 4, 2023, 3:00 PM ET



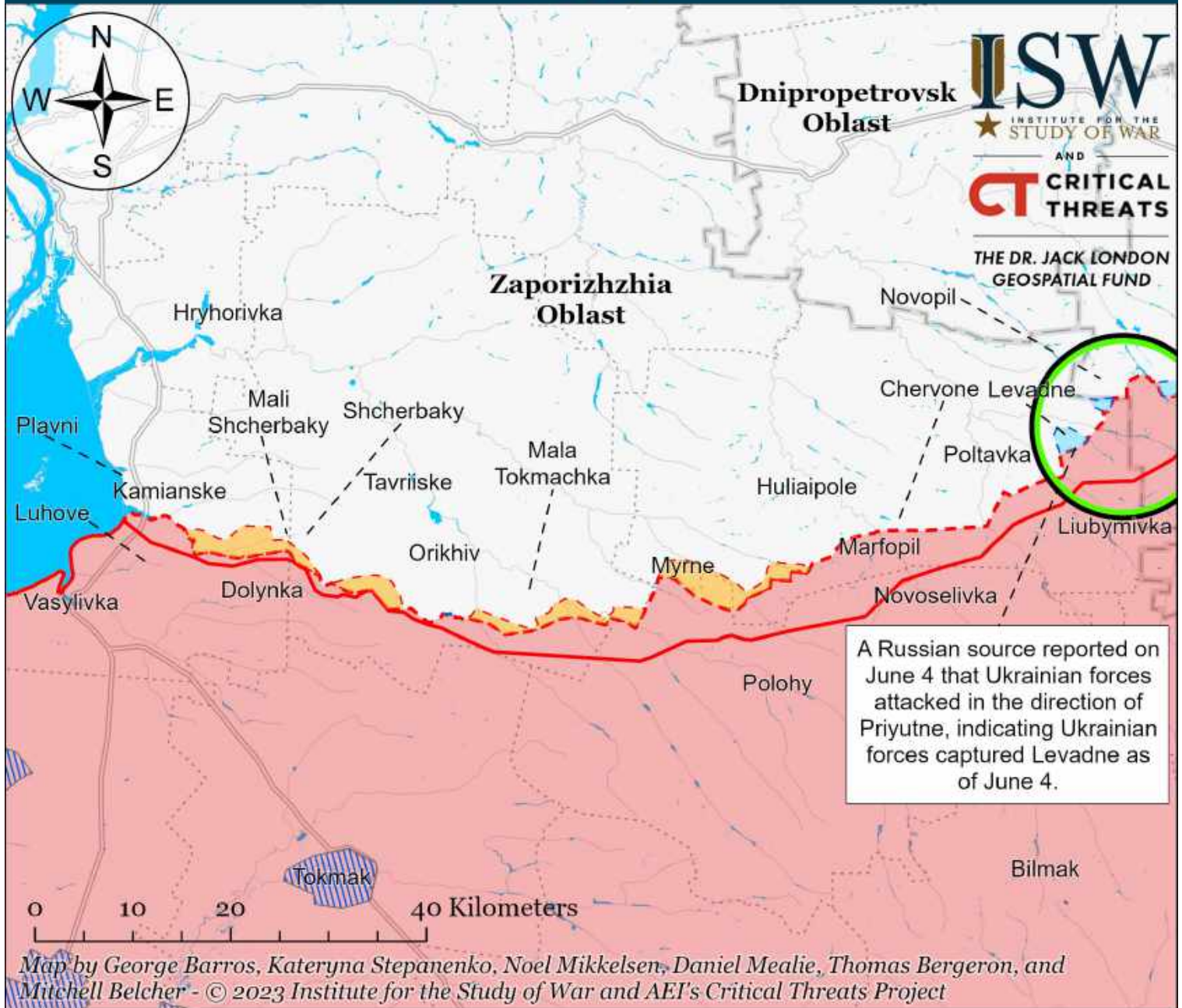
ISW
 INSTITUTE FOR THE
 STUDY OF WAR
 AND
CT CRITICAL
 THREATS
 THE DR. JACK LONDON
 GEOSPATIAL FUND

- Bakhmut City Limits
- Assessed Russian Advances in Ukraine*
- Assessed Russian-controlled Ukrainian Territory
- Claimed Russian Control over Ukrainian Territory
- Claimed Ukrainian Counteroffensives
- Reported Ukrainian Partisan Warfare

* Assessed Russian advances are areas where ISW assesses Russian forces have operated in or launched attacks against but do not control.

Note: The Ukrainian counteroffensive layer displays areas previously assigned to the Russian control, Russian advances, or Russian claims layers where ISW now assesses that Ukrainian forces have established a presence beyond a short-term raid. Inclusion of an area on this layer does not imply that ISW assesses that the area is part of any upcoming Ukrainian counteroffensive operation.

Assessed Control of Terrain Around Zaporizhia as of June 4, 2023, 3:00 PM ET

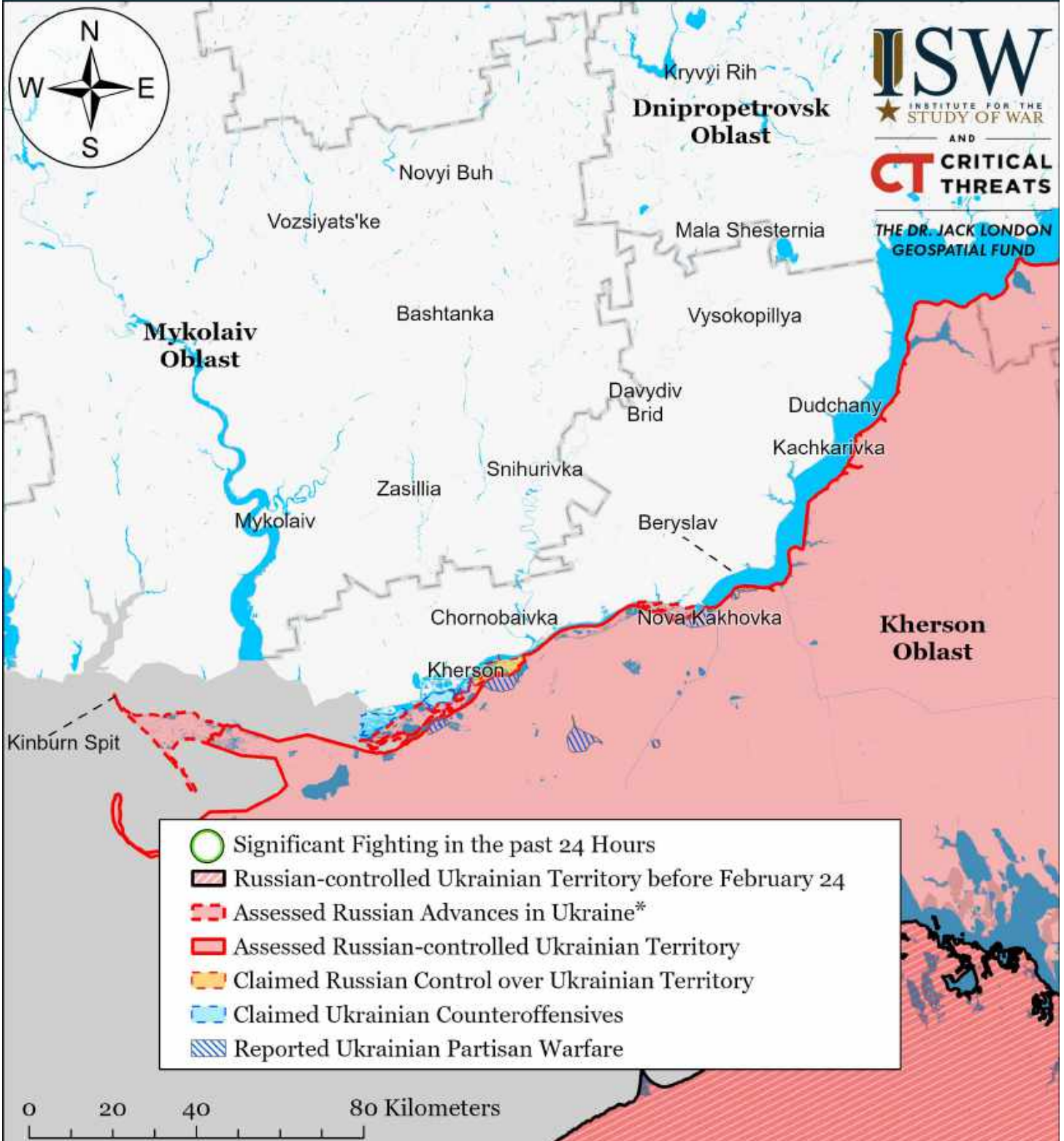


- Significant Fighting in the past 24 Hours
- Assessed Russian-controlled Ukrainian Territory
- Claimed Russian Control over Ukrainian Territory
- Reported Ukrainian Partisan Warfare
- Russian-controlled Ukrainian Territory before February 24
- Assessed Russian Advances in Ukraine*
- Claimed Ukrainian Counteroffensives

* Assessed Russian advances are areas where ISW assesses Russian forces have operated in or launched attacks against but do not control.

Note: The Ukrainian counteroffensive layer displays areas previously assigned to the Russian control, Russian advances, or Russian claims layers where ISW now assesses that Ukrainian forces have established a presence beyond a short-term raid. Inclusion of an area on this layer does not imply that ISW assesses that the area is part of any upcoming Ukrainian counteroffensive operation.

Assessed Control of Terrain Around Kherson and Mykolaiv as of June 4, 2023, 3:00 PM ET



ISW
 INSTITUTE FOR THE
 STUDY OF WAR
 AND
CT CRITICAL
 THREATS
 THE DR. JACK LONDON
 GEOSPATIAL FUND

Map by George Barros, Kateryna Stepanenko, Noel Mikkelsen, Daniel Mealie, Thomas Bergeron, and Mitchell Belcher - © 2023 Institute for the Study of War and AET's Critical Threats Project

* Assessed Russian advances are areas where ISW assesses Russian forces have operated in or launched attacks against but do not control.

Note: The Ukrainian counteroffensive layer displays areas previously assigned to the Russian control, Russian advances, or Russian claims layers where ISW now assesses that Ukrainian forces have established a presence beyond a short-term raid. Inclusion of an area on this layer does not imply that ISW assesses that the area is part of any upcoming Ukrainian counteroffensive operation.

Assessed Control of Terrain in Ukraine and Main Russian Maneuver Axes as of June 3, 2023, 3:00 PM ET

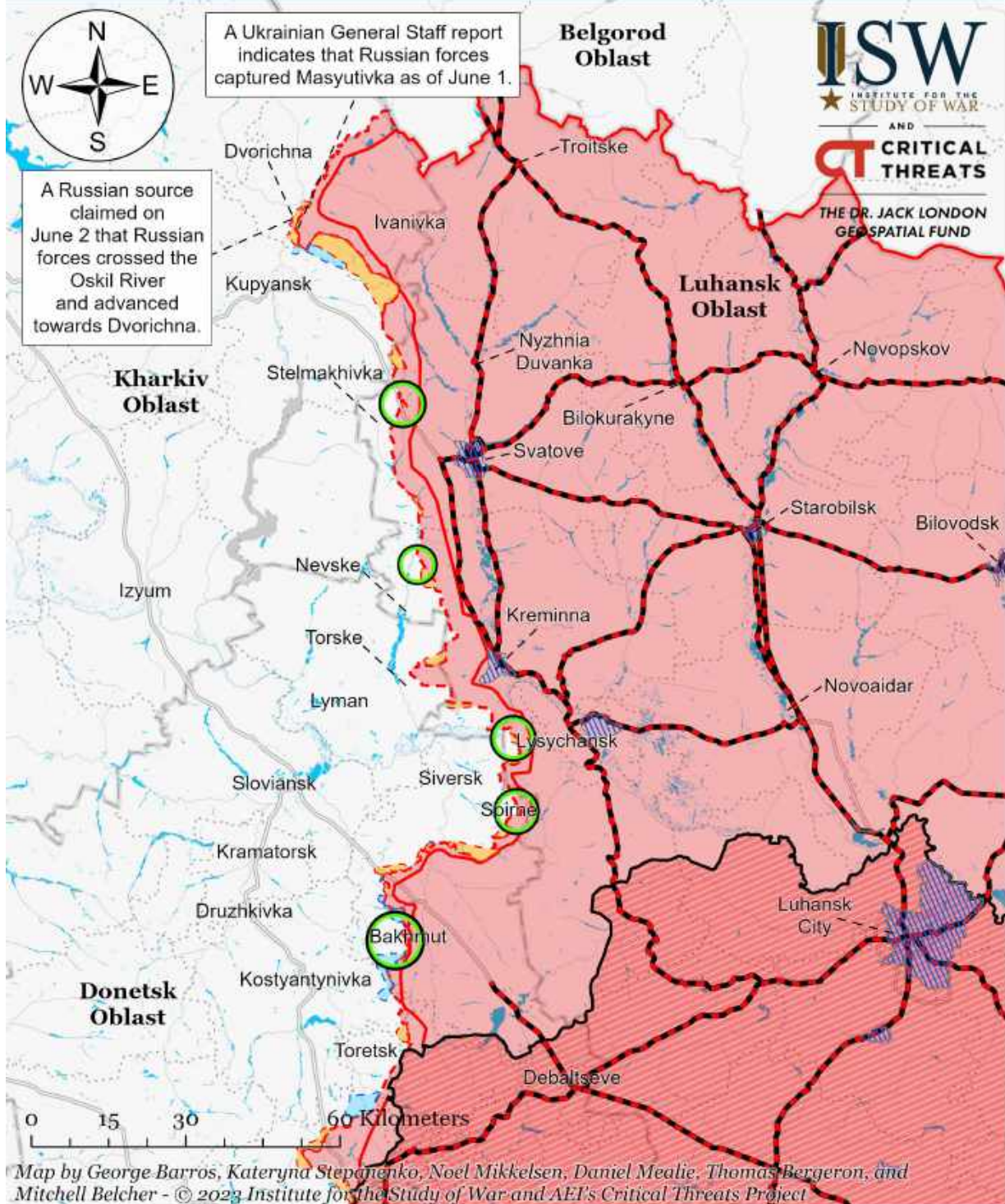


Map by George Barros, Kateryna Stepanenko, Noel Mikkelsen, Daniel Mealie, Thomas Bergeron, and Mitchell Belcher - © 2023 Institute for the Study of War and AEI's Critical Threats Project

* Assessed Russian advances are areas where ISW assesses Russian forces have operated in or launched attacks against but do not control.

Note: The Ukrainian counteroffensive layer displays areas previously assigned to the Russian control, Russian advances, or Russian claims layers where ISW now assesses that Ukrainian forces have established a presence beyond a short-term raid. Inclusion of an area on this layer does not imply that ISW assesses that the area is part of any upcoming Ukrainian counteroffensive operation.

Assessed Control of Terrain Around Luhansk Oblast as of June 3, 2023, 3:00 PM ET

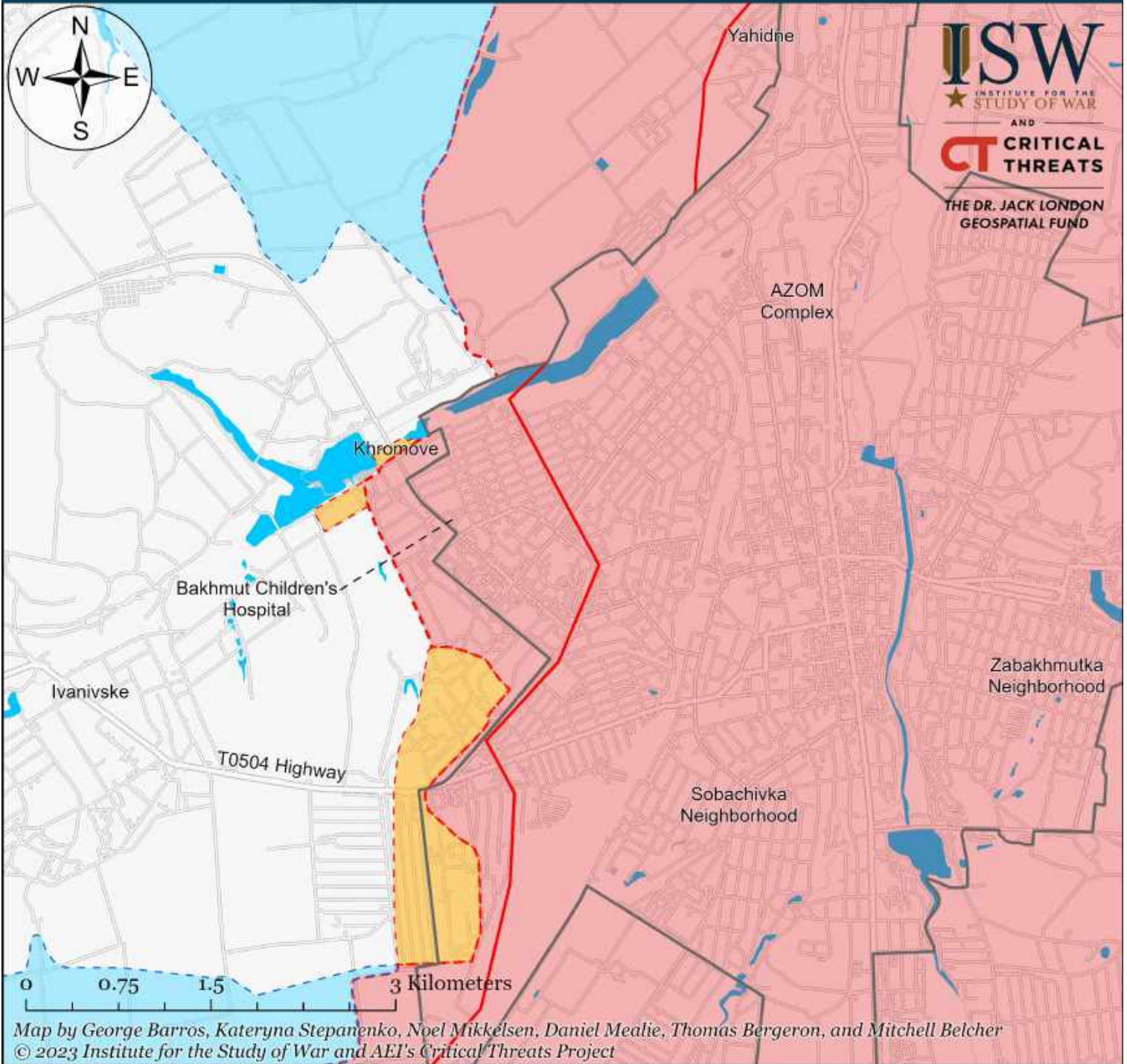


- Significant Fighting in the past 24 Hours
- Russian Ground Lines of Communication
- Russian-controlled Ukrainian Territory before February 24
- Assessed Russian Advances in Ukraine*
- Assessed Russian-controlled Ukrainian Territory
- Claimed Russian Control over Ukrainian Territory
- Claimed Ukrainian Counteroffensives
- Reported Ukrainian Partisan Warfare

* Assessed Russian advances are areas where ISW assesses Russian forces have operated in or launched attacks against but do not control.

Note: The Ukrainian counteroffensive layer displays areas previously assigned to the Russian control, Russian advances, or Russian claims layers where ISW now assesses that Ukrainian forces have established a presence beyond a short-term raid. Inclusion of an area on this layer does not imply that ISW assesses that the area is part of any upcoming Ukrainian counteroffensive operation.

Assessed Control of Terrain in Bakhmut as of June 3, 2023, 3:00 PM ET



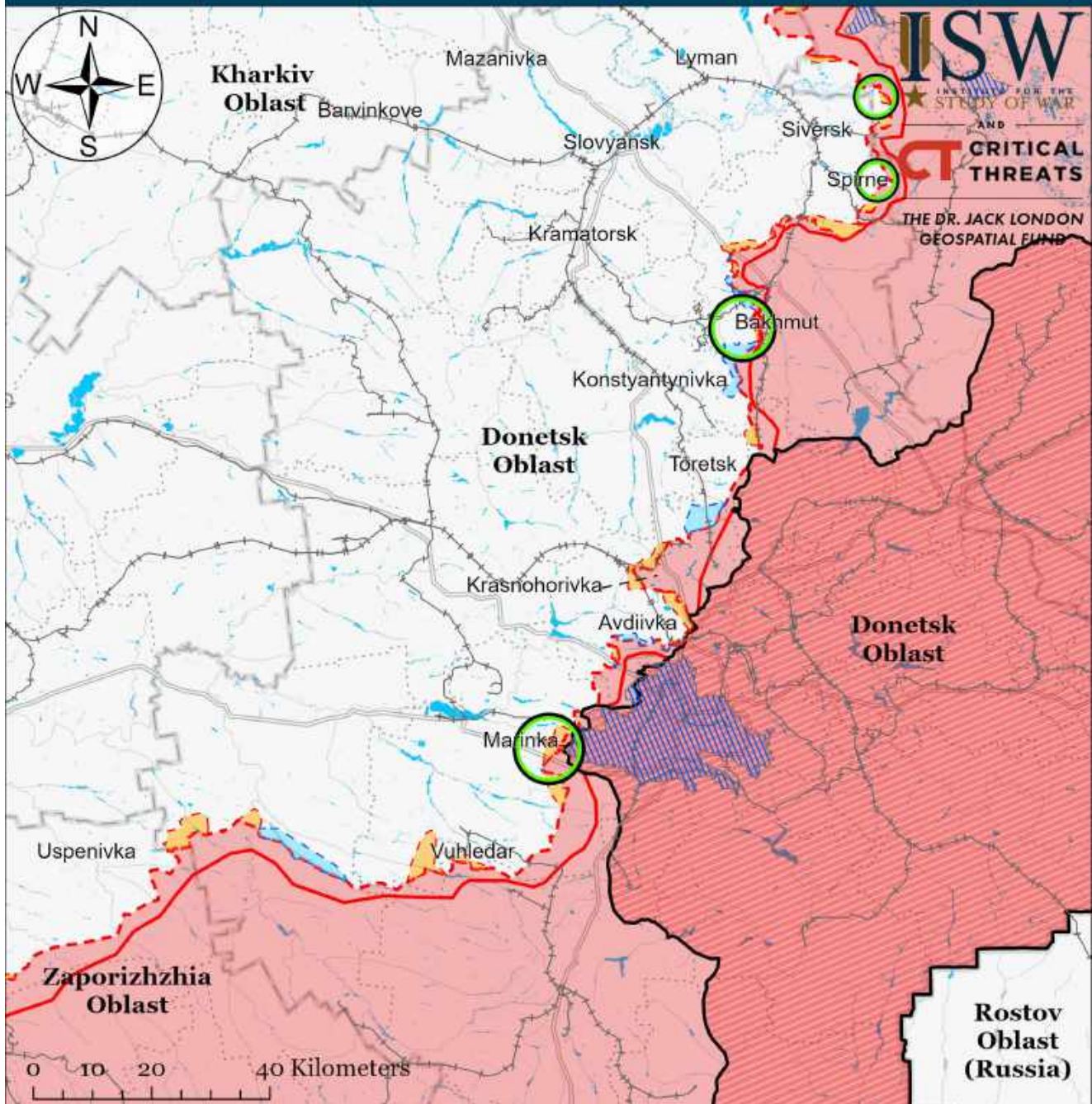
ISW
 INSTITUTE FOR THE
 STUDY OF WAR
 AND
CT CRITICAL
 THREATS
 THE DR. JACK LONDON
 GEOSPATIAL FUND

- Bakhmut City Limits
- ▭ Assessed Russian-controlled Ukrainian Territory
- ▭ Claimed Ukrainian Counteroffensives
- ▭ Assessed Russian Advances in Ukraine*
- ▭ Claimed Russian Control over Ukrainian Territory
- ▭ Reported Ukrainian Partisan Warfare

* Assessed Russian advances are areas where ISW assesses Russian forces have operated in or launched attacks against but do not control.

Note: The Ukrainian counteroffensive layer displays areas previously assigned to the Russian control, Russian advances, or Russian claims layers where ISW now assesses that Ukrainian forces have established a presence beyond a short-term raid. Inclusion of an area on this layer does not imply that ISW assesses that the area is part of any upcoming Ukrainian counteroffensive operation.

Assessed Control of Terrain Around Donetsk as of June 3, 2023, 3:00 PM ET



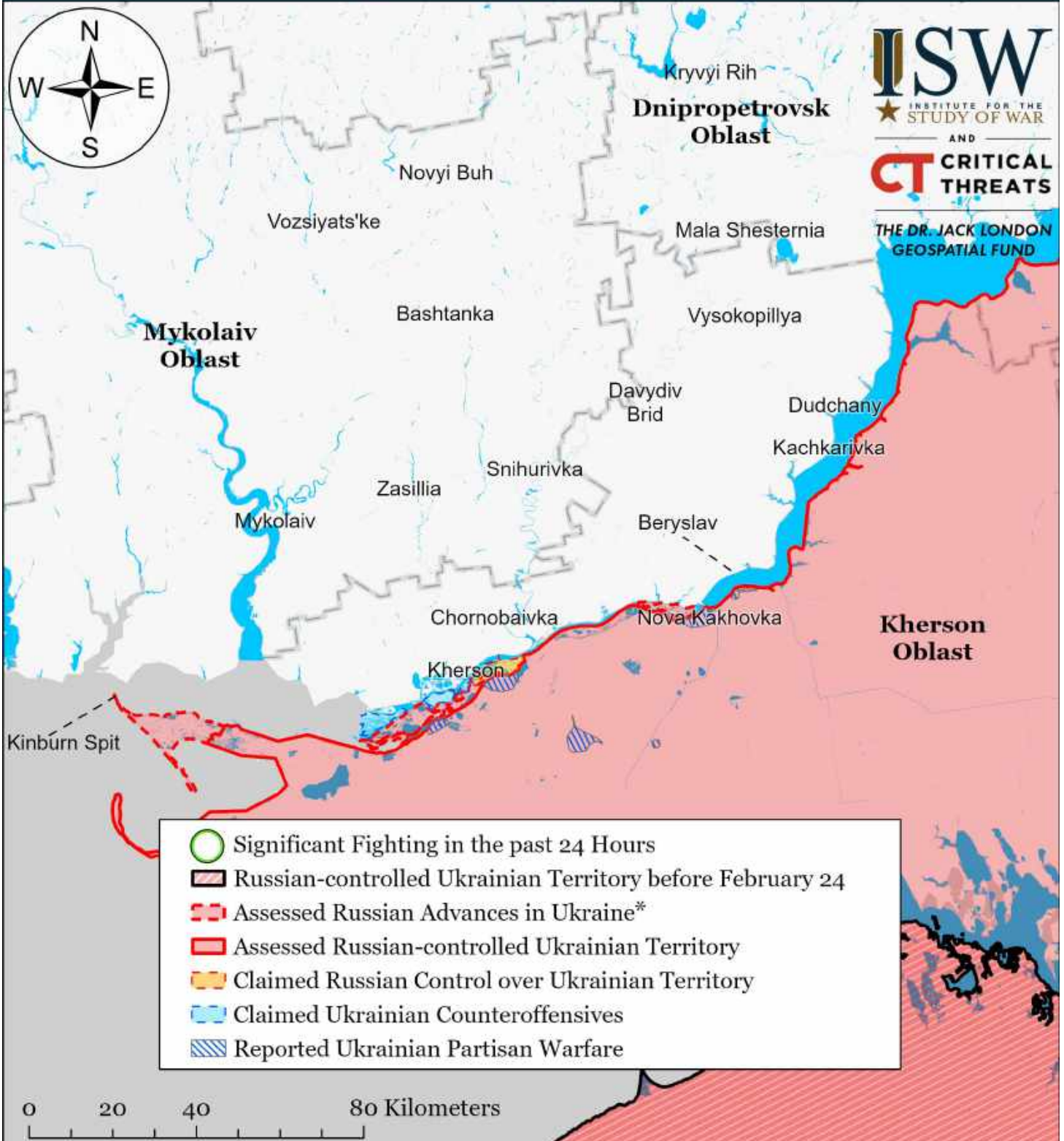
Map by George Barros, Kateryna Stepanenko, Noel Mikkelsen, Daniel Mealie, Thomas Bergeron, and Mitchell Belcher - © 2023 Institute for the Study of War and AEI's Critical Threats Project

- Significant Fighting in the past 24 Hours
- Assessed Russian-controlled Ukrainian Territory
- Russian-controlled Ukrainian Territory before February 24
- Claimed Russian Control over Ukrainian Territory
- Assessed Russian Advances in Ukraine*
- Claimed Ukrainian Counteroffensives
- Major Railroads
- Reported Ukrainian Partisan Warfare

* Assessed Russian advances are areas where ISW assesses Russian forces have operated in or launched attacks against but do not control.

Note: The Ukrainian counteroffensive layer displays areas previously assigned to the Russian control, Russian advances, or Russian claims layers where ISW now assesses that Ukrainian forces have established a presence beyond a short-term raid. Inclusion of an area on this layer does not imply that ISW assesses that the area is part of any upcoming Ukrainian counteroffensive operation.

Assessed Control of Terrain Around Kherson and Mykolaiv as of June 3, 2023, 3:00 PM ET



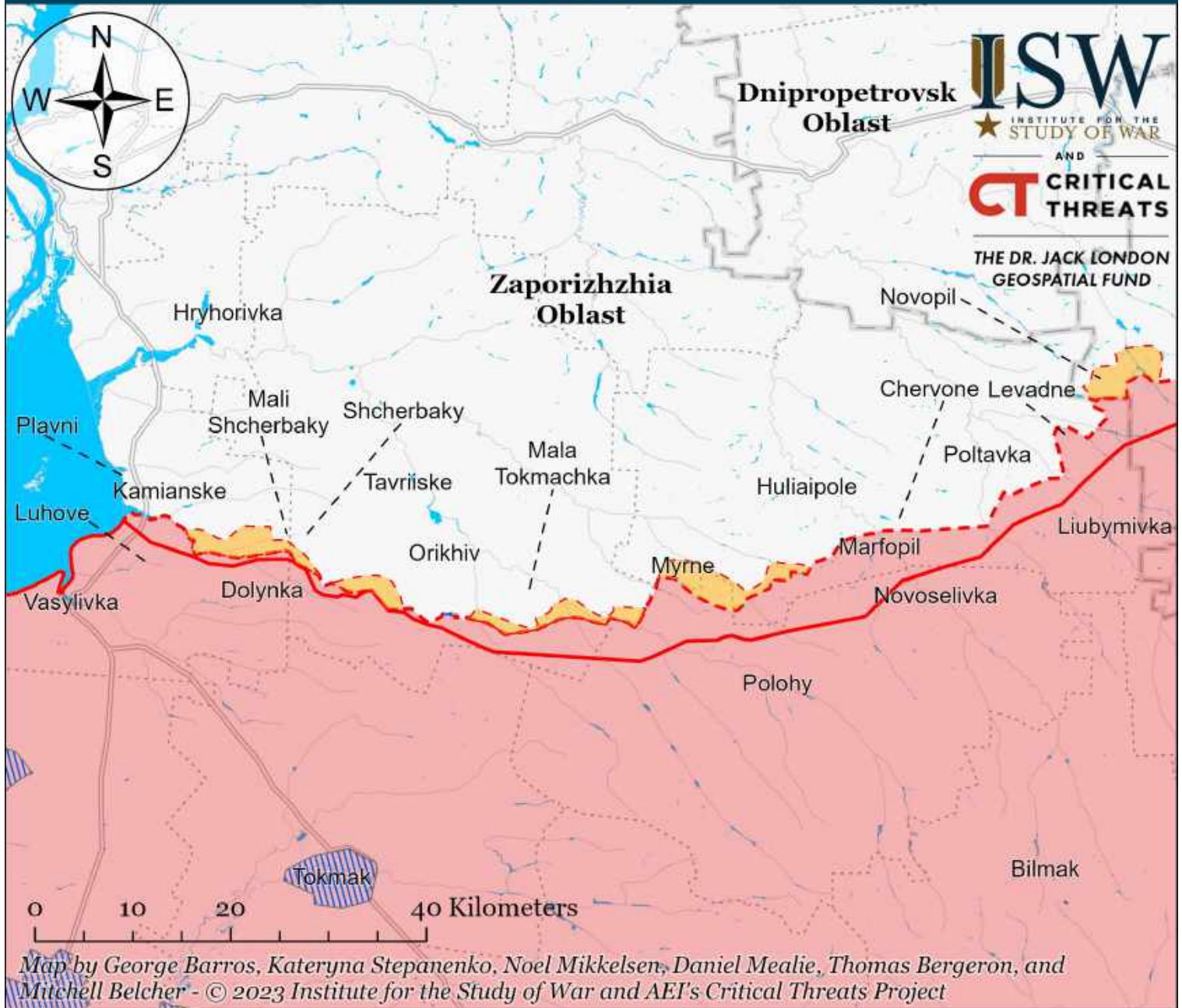
ISW
 INSTITUTE FOR THE
 STUDY OF WAR
 AND
CT CRITICAL
 THREATS
 THE DR. JACK LONDON
 GEOSPATIAL FUND

Map by George Barros, Kateryna Stepanenko, Noel Mikkelsen, Daniel Mealie, Thomas Bergeron, and Mitchell Belcher - © 2023 Institute for the Study of War and AET's Critical Threats Project

* Assessed Russian advances are areas where ISW assesses Russian forces have operated in or launched attacks against but do not control.

Note: The Ukrainian counteroffensive layer displays areas previously assigned to the Russian control, Russian advances, or Russian claims layers where ISW now assesses that Ukrainian forces have established a presence beyond a short-term raid. Inclusion of an area on this layer does not imply that ISW assesses that the area is part of any upcoming Ukrainian counteroffensive operation.

Assessed Control of Terrain Around Zaporizhia as of June 3, 2023, 3:00 PM ET



- Significant Fighting in the past 24 Hours
- Assessed Russian-controlled Ukrainian Territory
- Reported Ukrainian Partisan Warfare
- Russian-controlled Ukrainian Territory before February 24
- Claimed Russian Control over Ukrainian Territory
- Assessed Russian Advances in Ukraine*
- Claimed Ukrainian Counteroffensives

* Assessed Russian advances are areas where ISW assesses Russian forces have operated in or launched attacks against but do not control.

Note: The Ukrainian counteroffensive layer displays areas previously assigned to the Russian control, Russian advances, or Russian claims layers where ISW now assesses that Ukrainian forces have established a presence beyond a short-term raid. Inclusion of an area on this layer does not imply that ISW assesses that the area is part of any upcoming Ukrainian counteroffensive operation.

Assessed Control of Terrain in Ukraine and Main Russian Maneuver Axes as of June 2, 2023, 3:00 PM ET

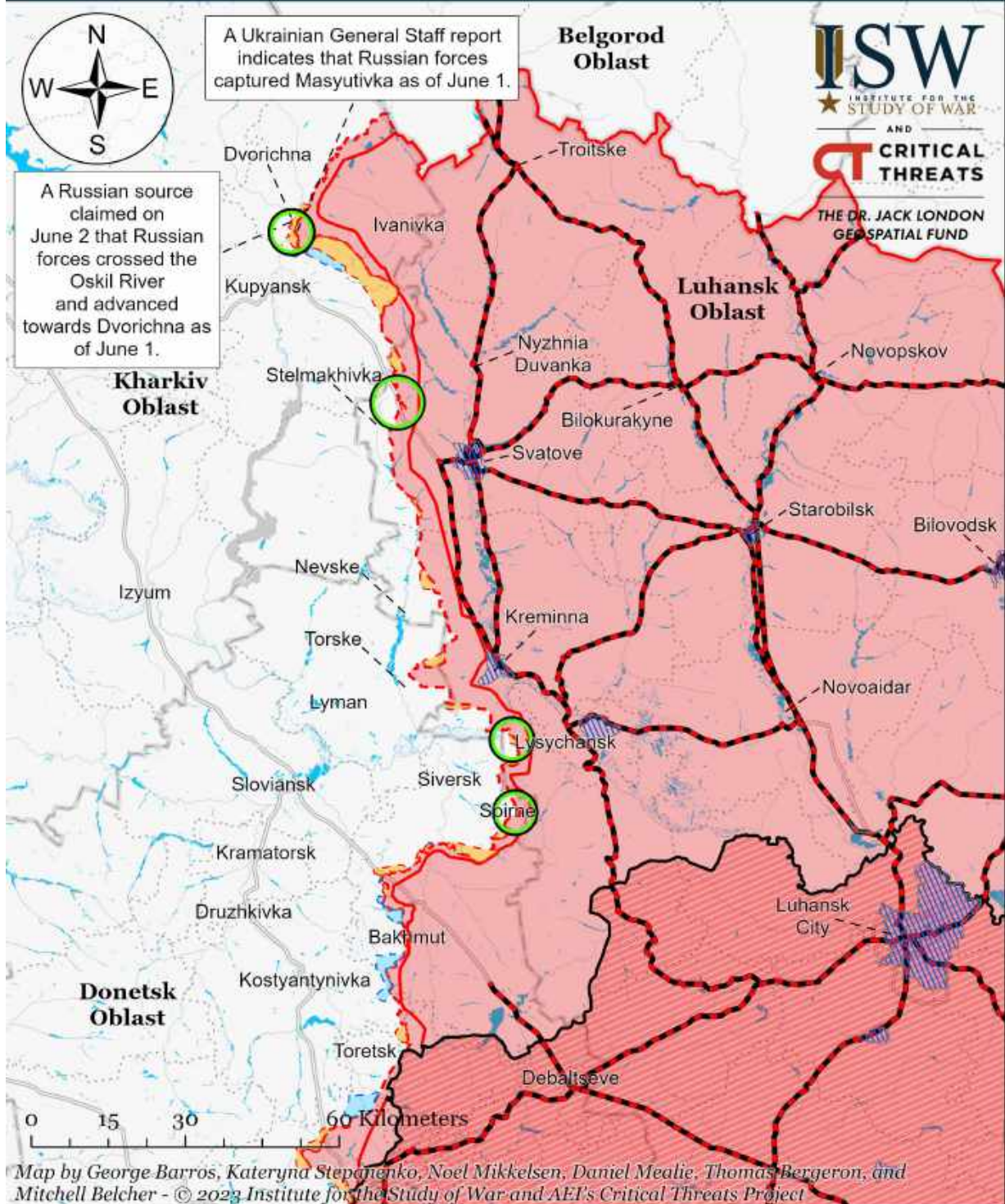


Map by George Barros, Kateryna Stepanenko, Noel Mikkelsen, Daniel Mealie, Thomas Bergeron, and Mitchell Belcher - © 2023 Institute for the Study of War and AEI's Critical Threats Project

* Assessed Russian advances are areas where ISW assesses Russian forces have operated in or launched attacks against but do not control.

Note: The Ukrainian counteroffensive layer displays areas previously assigned to the Russian control, Russian advances, or Russian claims layers where ISW now assesses that Ukrainian forces have established a presence beyond a short-term raid. Inclusion of an area on this layer does not imply that ISW assesses that the area is part of any upcoming Ukrainian counteroffensive operation.

Assessed Control of Terrain Around Luhansk Oblast as of June 2, 2023, 3:00 PM ET

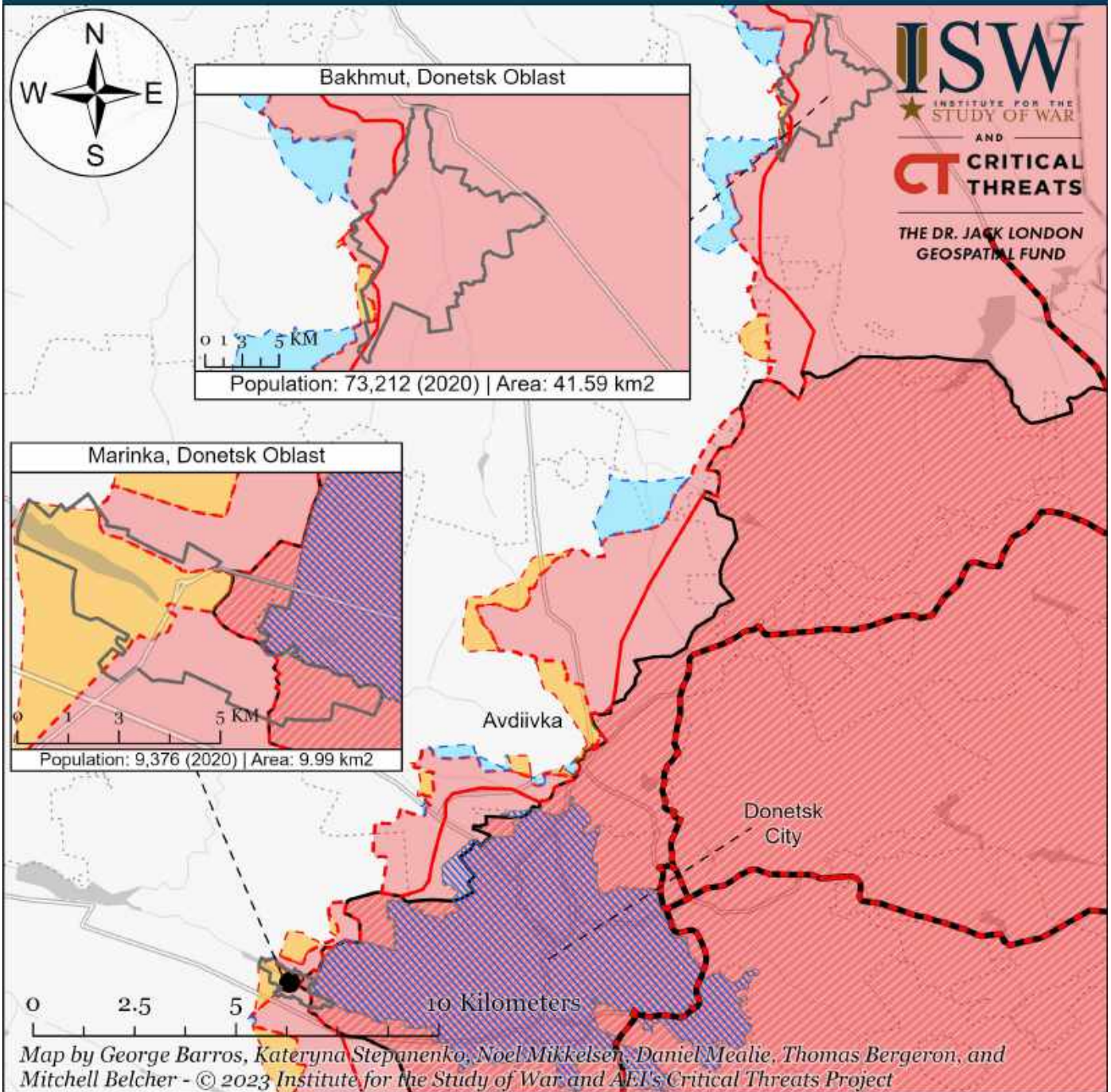


- Significant Fighting in the past 24 Hours
- Assessed Russian Advances in Ukraine*
- Claimed Ukrainian Counteroffensives
- Russian Ground Lines of Communication
- Assessed Russian-controlled Ukrainian Territory
- Reported Ukrainian Partisan Warfare
- Russian-controlled Ukrainian Territory before February 24
- Claimed Russian Control over Ukrainian Territory

* Assessed Russian advances are areas where ISW assesses Russian forces have operated in or launched attacks against but do not control.

Note: The Ukrainian counteroffensive layer displays areas previously assigned to the Russian control, Russian advances, or Russian claims layers where ISW now assesses that Ukrainian forces have established a presence beyond a short-term raid. Inclusion of an area on this layer does not imply that ISW assesses that the area is part of any upcoming Ukrainian counteroffensive operation.

Assessed Control of Terrain Around Bakhmut and Marinka as of June 2, 2023, 3:00 PM ET



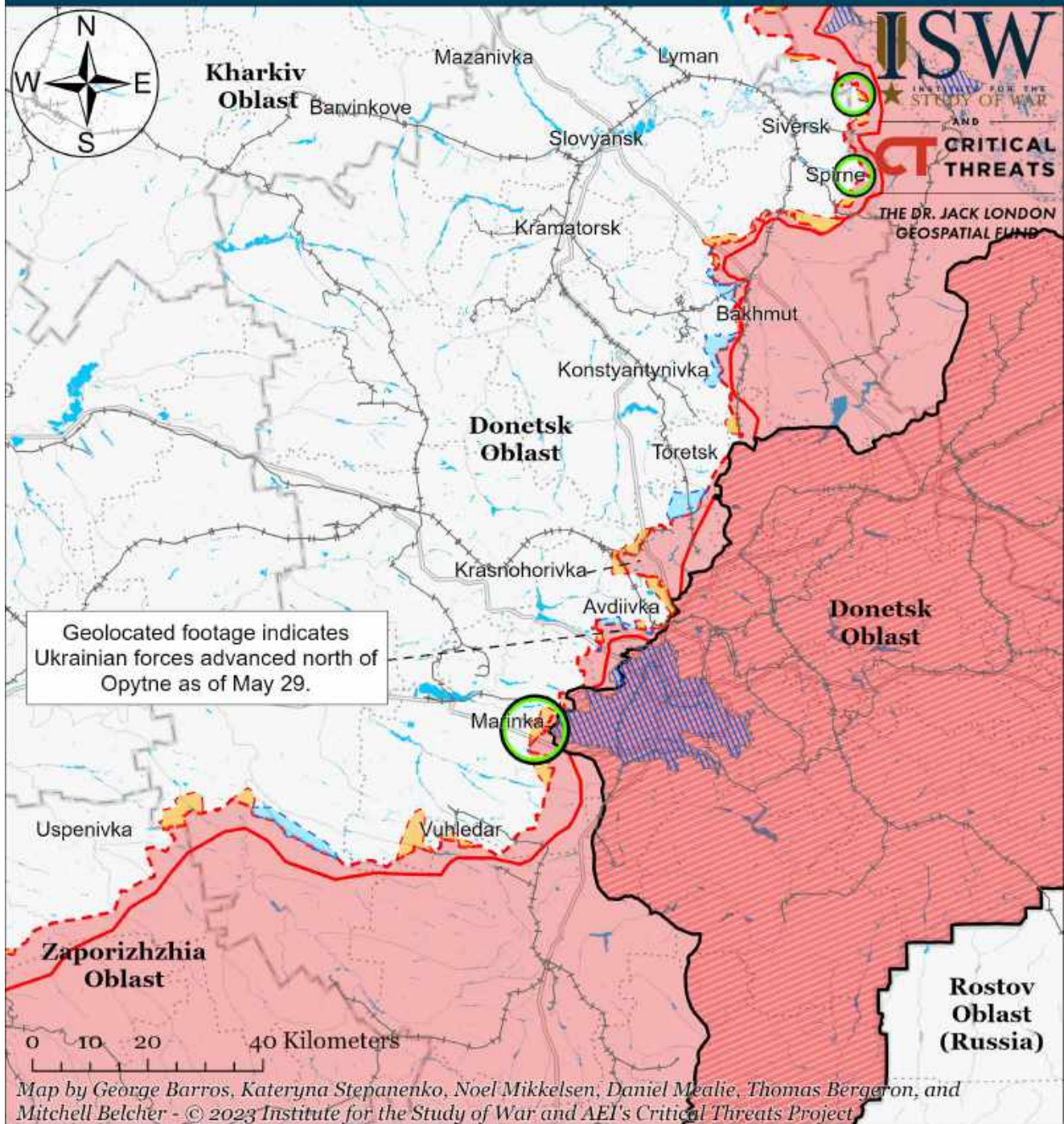
ISW
INSTITUTE FOR THE STUDY OF WAR
AND
CT CRITICAL THREATS
THE DR. JACK LONDON GEOSPATIAL FUND

- Russian Ground Lines of Communication
- Assessed Russian-controlled Ukrainian Territory
- Reported Ukrainian Partisan Warfare
- Russian-controlled Ukrainian Territory before February 24
- Claimed Russian Control over Ukrainian Territory
- Bakhmut City Limits
- Assessed Russian Advances in Ukraine*
- Claimed Ukrainian Counteroffensives
- Marinka City Limits

* Assessed Russian advances are areas where ISW assesses Russian forces have operated in or launched attacks against but do not control.

Note: The Ukrainian counteroffensive layer displays areas previously assigned to the Russian control, Russian advances, or Russian claims layers where ISW now assesses that Ukrainian forces have established a presence beyond a short-term raid. Inclusion of an area on this layer does not imply that ISW assesses that the area is part of any upcoming Ukrainian counteroffensive operation.

Assessed Control of Terrain Around Donetsk as of June 2, 2023, 3:00 PM ET

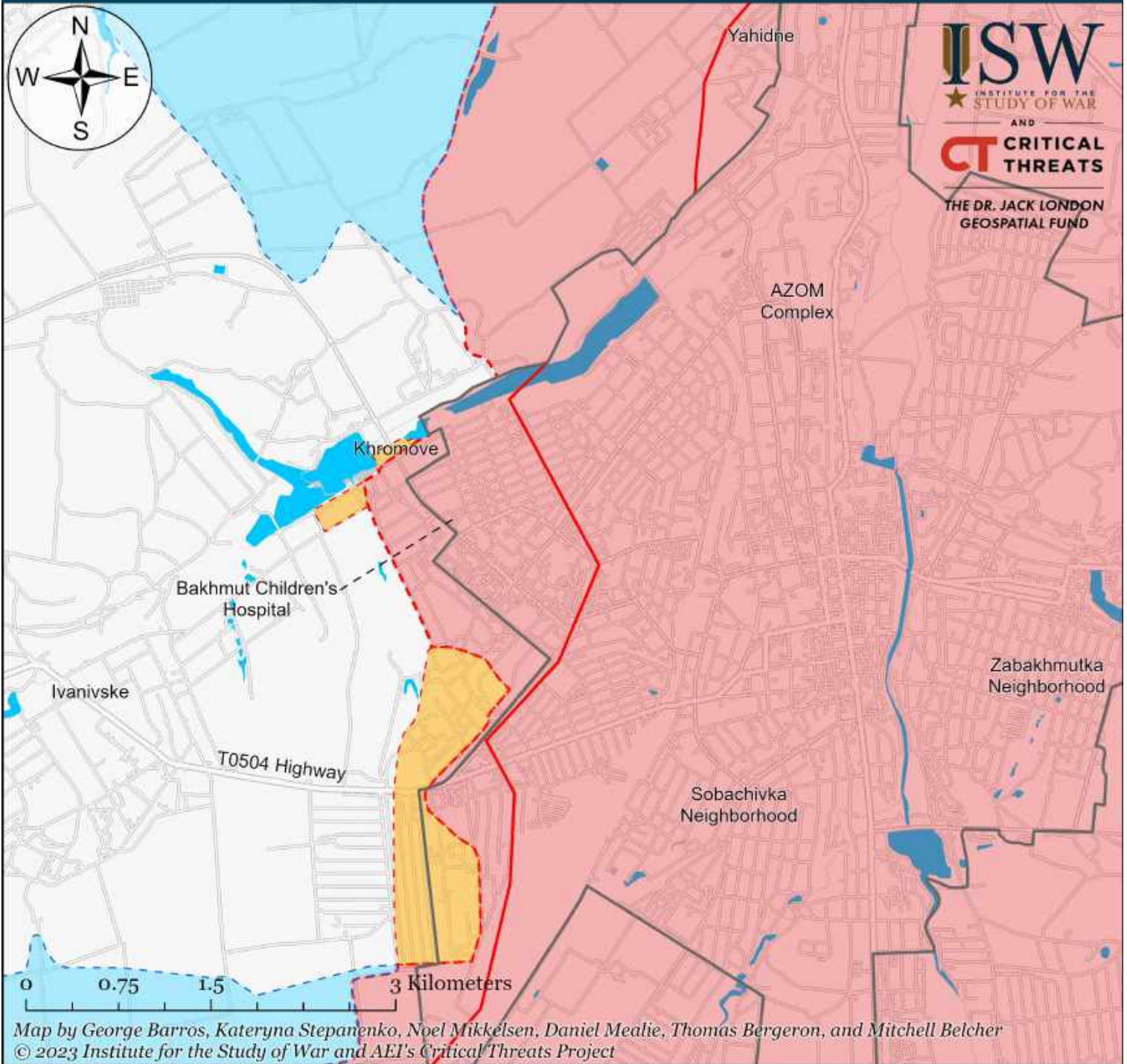


- Significant Fighting in the past 24 Hours
- Assessed Russian-controlled Ukrainian Territory
- Russian-controlled Ukrainian Territory before February 24
- Claimed Russian Control over Ukrainian Territory
- Assessed Russian Advances in Ukraine*
- Claimed Ukrainian Counteroffensives
- Major Railroads
- Reported Ukrainian Partisan Warfare

* Assessed Russian advances are areas where ISW assesses Russian forces have operated in or launched attacks against but do not control.

Note: The Ukrainian counteroffensive layer displays areas previously assigned to the Russian control, Russian advances, or Russian claims layers where ISW now assesses that Ukrainian forces have established a presence beyond a short-term raid. Inclusion of an area on this layer does not imply that ISW assesses that the area is part of any upcoming Ukrainian counteroffensive operation.

Assessed Control of Terrain in Bakhmut as of June 2, 2023, 3:00 PM ET



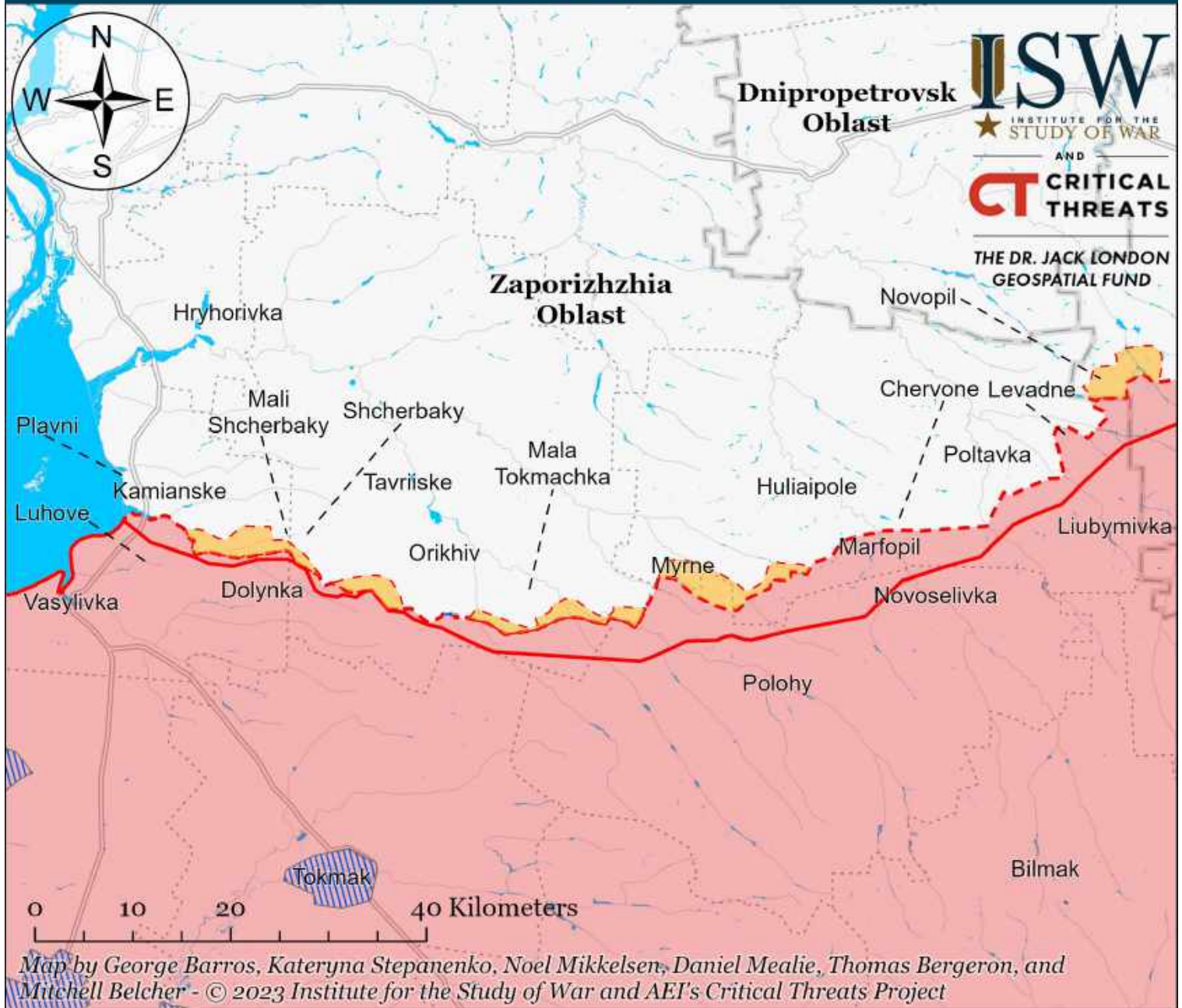
ISW
 INSTITUTE FOR THE
 STUDY OF WAR
 AND
CT CRITICAL
 THREATS
 THE DR. JACK LONDON
 GEOSPATIAL FUND

- | | | |
|---------------------------------------|--|-------------------------------------|
| Bakhmut City Limits | Assessed Russian-controlled Ukrainian Territory | Claimed Ukrainian Counteroffensives |
| Assessed Russian Advances in Ukraine* | Claimed Russian Control over Ukrainian Territory | Reported Ukrainian Partisan Warfare |

* Assessed Russian advances are areas where ISW assesses Russian forces have operated in or launched attacks against but do not control.

Note: The Ukrainian counteroffensive layer displays areas previously assigned to the Russian control, Russian advances, or Russian claims layers where ISW now assesses that Ukrainian forces have established a presence beyond a short-term raid. Inclusion of an area on this layer does not imply that ISW assesses that the area is part of any upcoming Ukrainian counteroffensive operation.

Assessed Control of Terrain Around Zaporizhia as of June 2, 2023, 3:00 PM ET



- Significant Fighting in the past 24 Hours
- Assessed Russian-controlled Ukrainian Territory
- Claimed Russian Control over Ukrainian Territory
- Claimed Ukrainian Counteroffensives
- Assessed Russian Advances in Ukraine*
- Reported Ukrainian Partisan Warfare

* Assessed Russian advances are areas where ISW assesses Russian forces have operated in or launched attacks against but do not control.

Note: The Ukrainian counteroffensive layer displays areas previously assigned to the Russian control, Russian advances, or Russian claims layers where ISW now assesses that Ukrainian forces have established a presence beyond a short-term raid. Inclusion of an area on this layer does not imply that ISW assesses that the area is part of any upcoming Ukrainian counteroffensive operation.

Assessed Control of Terrain Around Kherson and Mykolaiv as of June 2, 2023, 3:00 PM ET



Map by George Barros, Kateryna Stepanenko, Noel Mikkelsen, Daniel Mealie, Thomas Bergeron, and Mitchell Belcher - © 2023 Institute for the Study of War and AET's Critical Threats Project

* Assessed Russian advances are areas where ISW assesses Russian forces have operated in or launched attacks against but do not control.

Note: The Ukrainian counteroffensive layer displays areas previously assigned to the Russian control, Russian advances, or Russian claims layers where ISW now assesses that Ukrainian forces have established a presence beyond a short-term raid. Inclusion of an area on this layer does not imply that ISW assesses that the area is part of any upcoming Ukrainian counteroffensive operation.

Assessed Control of Terrain in Ukraine and Main Russian Maneuver Axes as of June 1, 2023, 3:00 PM ET

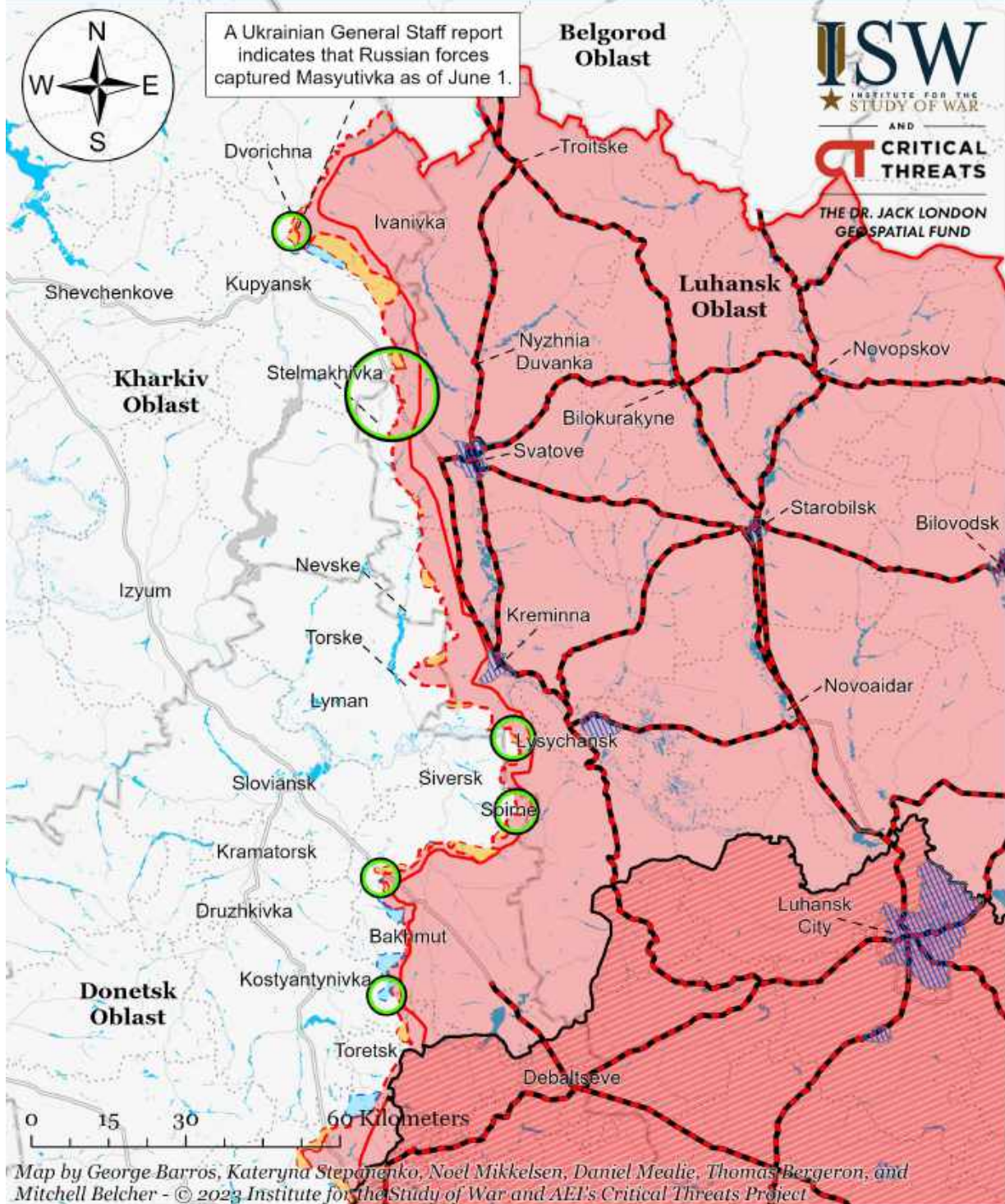


Map by George Barros, Kateryna Stepanenko, Noel Mikkelsen, Daniel Mealie, Thomas Bergeron, and Mitchell Belcher - © 2023 Institute for the Study of War and AEI's Critical Threats Project

* Assessed Russian advances are areas where ISW assesses Russian forces have operated in or launched attacks against but do not control.

Note: The Ukrainian counteroffensive layer displays areas previously assigned to the Russian control, Russian advances, or Russian claims layers where ISW now assesses that Ukrainian forces have established a presence beyond a short-term raid. Inclusion of an area on this layer does not imply that ISW assesses that the area is part of any upcoming Ukrainian counteroffensive operation.

Assessed Control of Terrain Around Luhansk Oblast as of June 1, 2023, 3:00 PM ET

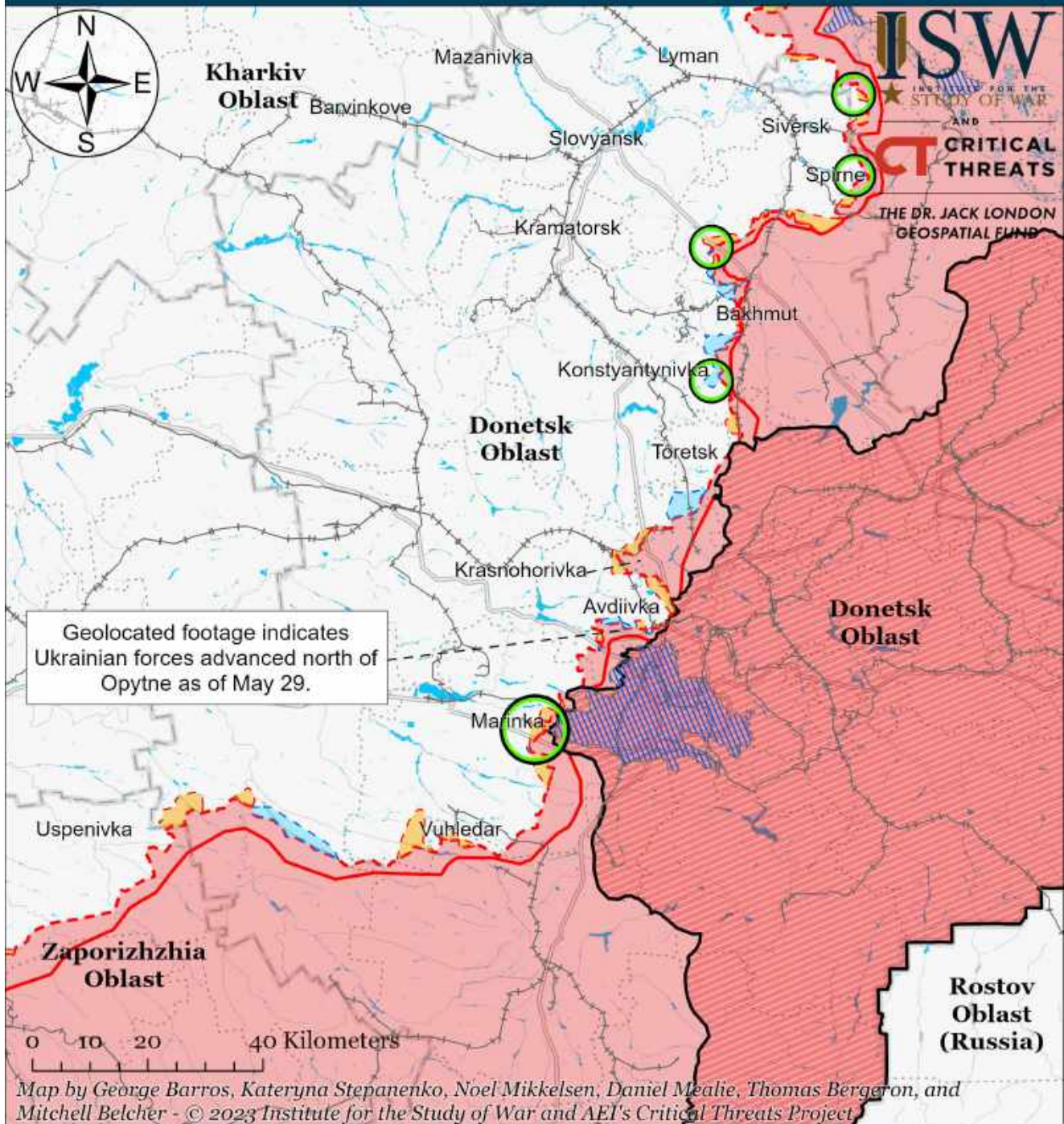


- Significant Fighting in the past 24 Hours
- Assessed Russian Advances in Ukraine*
- Claimed Ukrainian Counteroffensives
- Russian Ground Lines of Communication
- Assessed Russian-controlled Ukrainian Territory
- Reported Ukrainian Partisan Warfare
- Russian-controlled Ukrainian Territory before February 24
- Claimed Russian Control over Ukrainian Territory

* Assessed Russian advances are areas where ISW assesses Russian forces have operated in or launched attacks against but do not control.

Note: The Ukrainian counteroffensive layer displays areas previously assigned to the Russian control, Russian advances, or Russian claims layers where ISW now assesses that Ukrainian forces have established a presence beyond a short-term raid. Inclusion of an area on this layer does not imply that ISW assesses that the area is part of any upcoming Ukrainian counteroffensive operation.

Assessed Control of Terrain Around Donetsk as of June 1, 2023, 3:00 PM ET

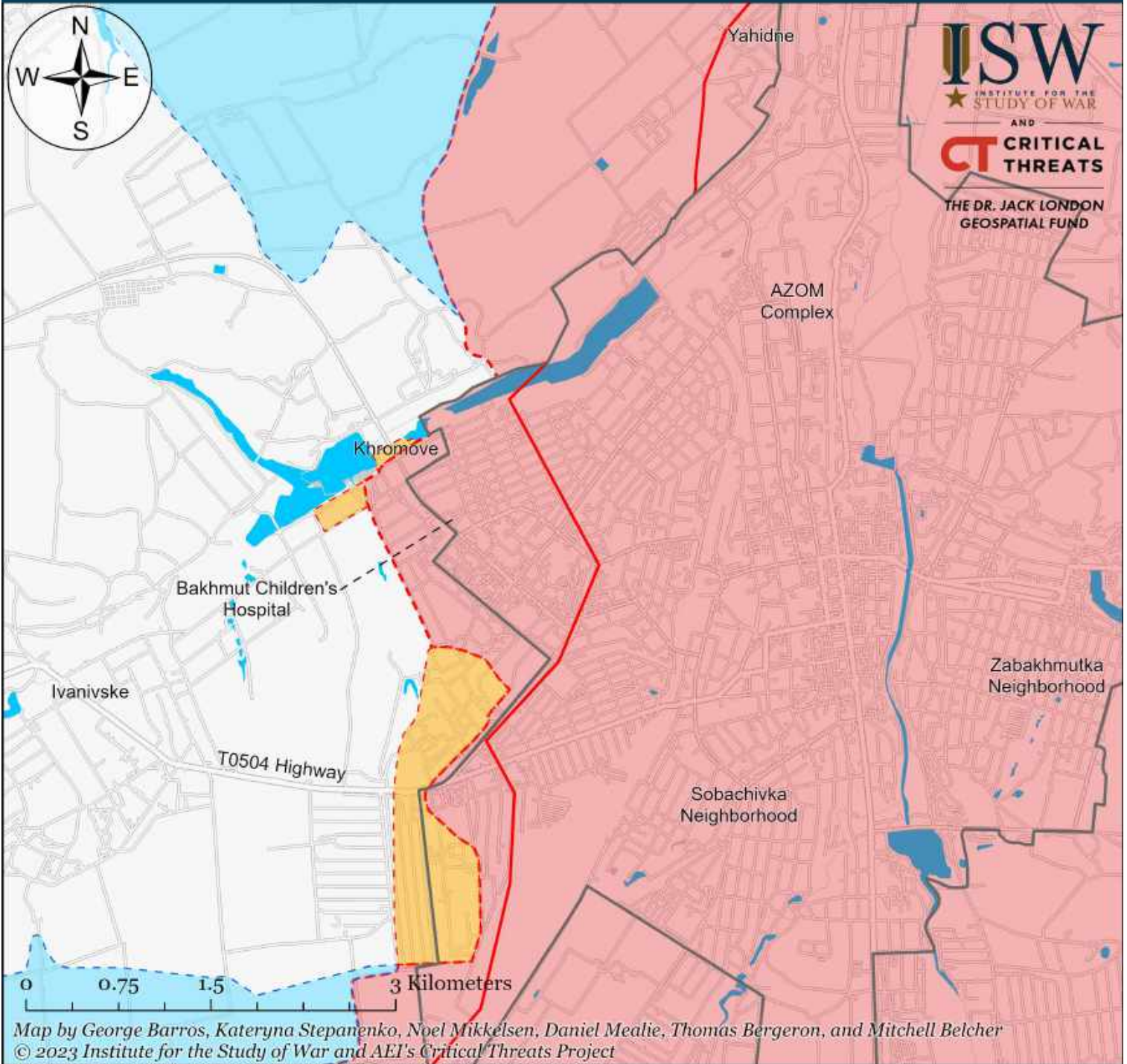


- | | | |
|---|--|-------------------------------------|
| Significant Fighting in the past 24 Hours | Assessed Russian-controlled Ukrainian Territory | Major Railroads |
| Russian-controlled Ukrainian Territory before February 24 | Claimed Russian Control over Ukrainian Territory | Reported Ukrainian Partisan Warfare |
| Assessed Russian Advances in Ukraine* | Claimed Ukrainian Counteroffensives | |

* Assessed Russian advances are areas where ISW assesses Russian forces have operated in or launched attacks against but do not control.

Note: The Ukrainian counteroffensive layer displays areas previously assigned to the Russian control, Russian advances, or Russian claims layers where ISW now assesses that Ukrainian forces have established a presence beyond a short-term raid. Inclusion of an area on this layer does not imply that ISW assesses that the area is part of any upcoming Ukrainian counteroffensive operation.

Assessed Control of Terrain in Bakhmut as of June 1, 2023, 3:00 PM ET

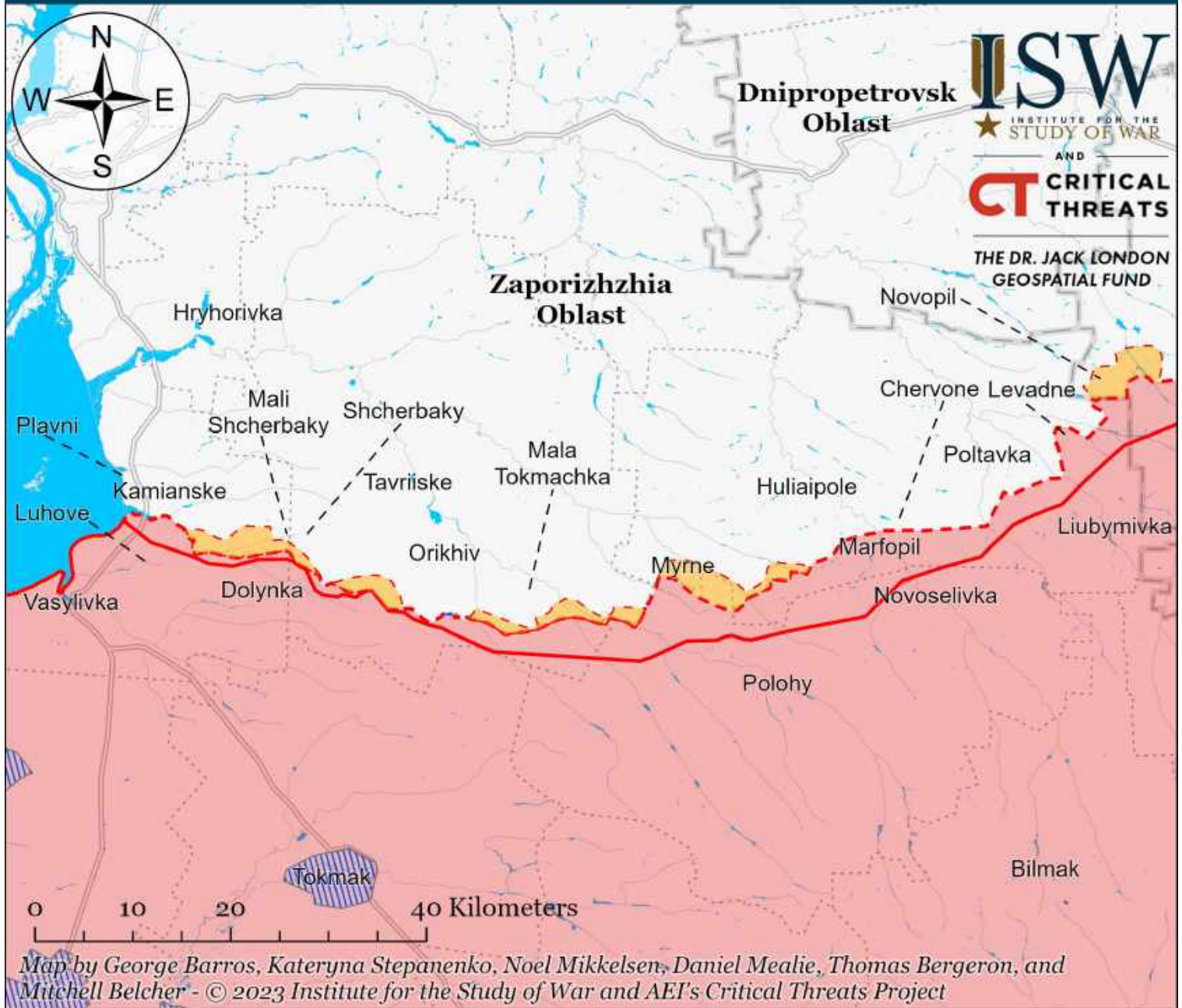


- | | | |
|---------------------------------------|--|-------------------------------------|
| Bakhmut City Limits | Assessed Russian-controlled Ukrainian Territory | Claimed Ukrainian Counteroffensives |
| Assessed Russian Advances in Ukraine* | Claimed Russian Control over Ukrainian Territory | Reported Ukrainian Partisan Warfare |

* Assessed Russian advances are areas where ISW assesses Russian forces have operated in or launched attacks against but do not control.

Note: The Ukrainian counteroffensive layer displays areas previously assigned to the Russian control, Russian advances, or Russian claims layers where ISW now assesses that Ukrainian forces have established a presence beyond a short-term raid. Inclusion of an area on this layer does not imply that ISW assesses that the area is part of any upcoming Ukrainian counteroffensive operation.

Assessed Control of Terrain Around Zaporizhia as of June 1, 2023, 3:00 PM ET

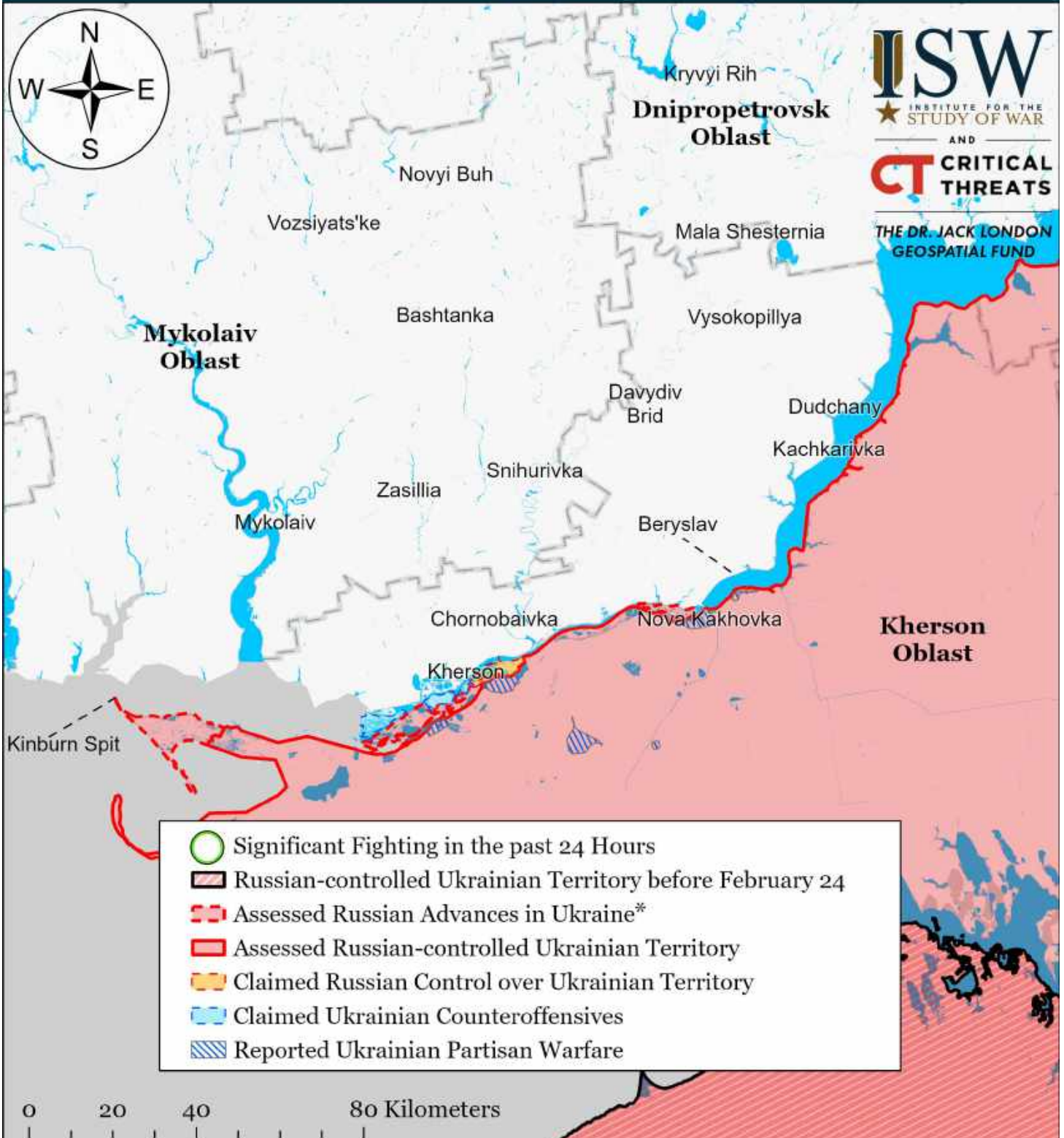


- Significant Fighting in the past 24 Hours
- Assessed Russian-controlled Ukrainian Territory
- Claimed Russian Control over Ukrainian Territory
- Claimed Ukrainian Counteroffensives
- Russian-controlled Ukrainian Territory before February 24
- Assessed Russian Advances in Ukraine*
- Reported Ukrainian Partisan Warfare

* Assessed Russian advances are areas where ISW assesses Russian forces have operated in or launched attacks against but do not control.

Note: The Ukrainian counteroffensive layer displays areas previously assigned to the Russian control, Russian advances, or Russian claims layers where ISW now assesses that Ukrainian forces have established a presence beyond a short-term raid. Inclusion of an area on this layer does not imply that ISW assesses that the area is part of any upcoming Ukrainian counteroffensive operation.

Assessed Control of Terrain Around Kherson and Mykolaiv as of June 1, 2023, 3:00 PM ET



Map by George Barros, Kateryna Stepanenko, Noel Mikkelsen, Daniel Mealie, Thomas Bergeron, and Mitchell Belcher - © 2023 Institute for the Study of War and AET's Critical Threats Project

* Assessed Russian advances are areas where ISW assesses Russian forces have operated in or launched attacks against but do not control.

Note: The Ukrainian counteroffensive layer displays areas previously assigned to the Russian control, Russian advances, or Russian claims layers where ISW now assesses that Ukrainian forces have established a presence beyond a short-term raid. Inclusion of an area on this layer does not imply that ISW assesses that the area is part of any upcoming Ukrainian counteroffensive operation.

Assessed Control of Terrain in Ukraine and Main Russian Maneuver Axes as of May 31, 2023, 3:00 PM ET

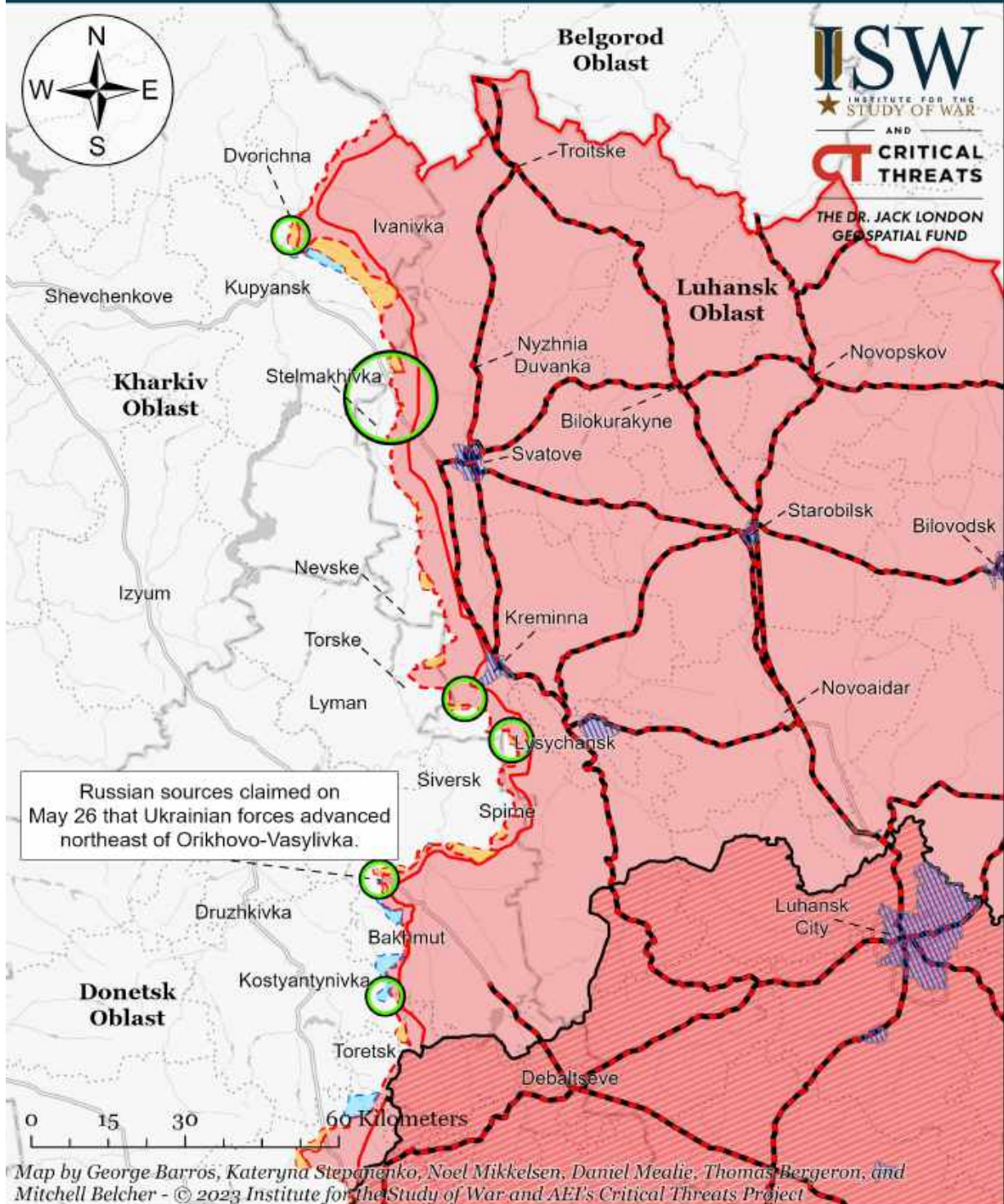


Map by George Barros, Kateryna Stepanenko, Noel Mikkelsen, Daniel Mealie, Thomas Bergeron, and Mitchell Belcher - © 2023 Institute for the Study of War and AEI's Critical Threats Project

* Assessed Russian advances are areas where ISW assesses Russian forces have operated in or launched attacks against but do not control.

Note: The Ukrainian counteroffensive layer displays areas previously assigned to the Russian control, Russian advances, or Russian claims layers where ISW now assesses that Ukrainian forces have established a presence beyond a short-term raid. Inclusion of an area on this layer does not imply that ISW assesses that the area is part of any upcoming Ukrainian counteroffensive operation.

Assessed Control of Terrain Around Luhansk Oblast as of May 31, 2023, 3:00 PM ET

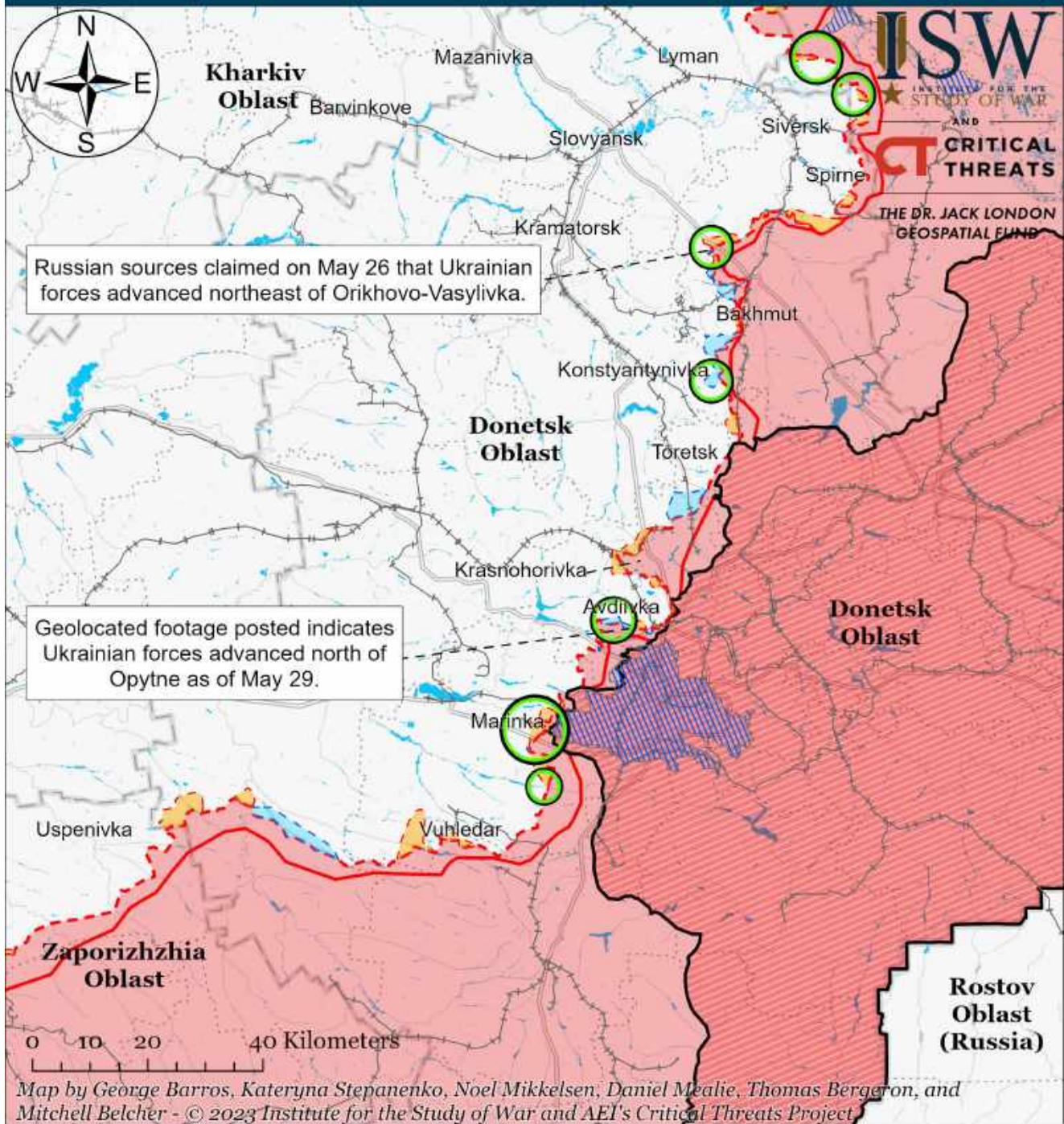


- Significant Fighting in the past 24 Hours
- Assessed Russian Advances in Ukraine*
- Claimed Ukrainian Counteroffensives
- Russian Ground Lines of Communication
- Assessed Russian-controlled Ukrainian Territory
- Reported Ukrainian Partisan Warfare
- Russian-controlled Ukrainian Territory before February 24
- Claimed Russian Control over Ukrainian Territory

* Assessed Russian advances are areas where ISW assesses Russian forces have operated in or launched attacks against but do not control.

Note: The Ukrainian counteroffensive layer displays areas previously assigned to the Russian control, Russian advances, or Russian claims layers where ISW now assesses that Ukrainian forces have established a presence beyond a short-term raid. Inclusion of an area on this layer does not imply that ISW assesses that the area is part of any upcoming Ukrainian counteroffensive operation.

Assessed Control of Terrain Around Donetsk as of May 31, 2023, 3:00 PM ET

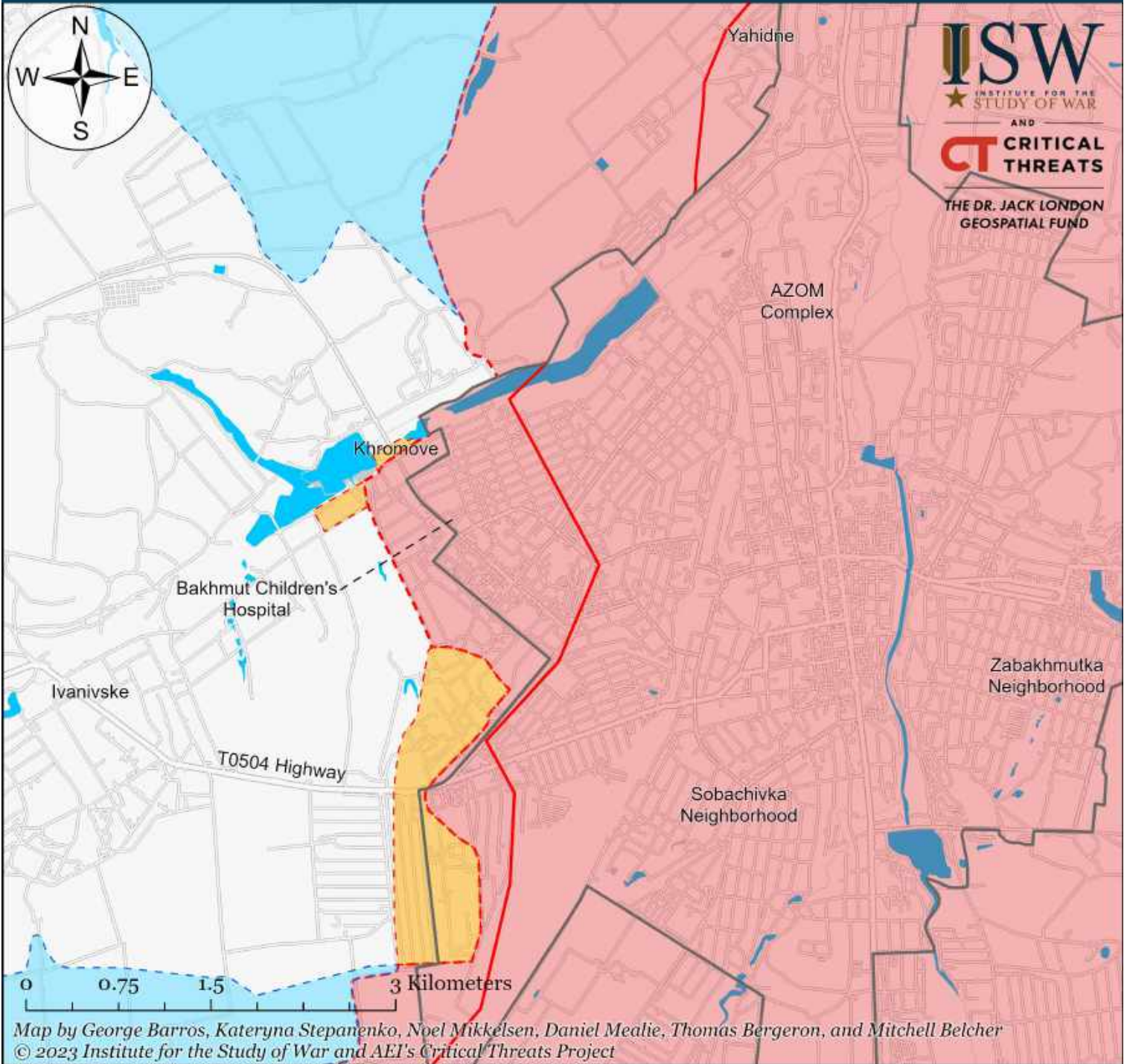


- | | | |
|---|--|-------------------------------------|
| Significant Fighting in the past 24 Hours | Assessed Russian-controlled Ukrainian Territory | Major Railroads |
| Russian-controlled Ukrainian Territory before February 24 | Claimed Russian Control over Ukrainian Territory | Reported Ukrainian Partisan Warfare |
| Assessed Russian Advances in Ukraine* | Claimed Ukrainian Counteroffensives | |

* Assessed Russian advances are areas where ISW assesses Russian forces have operated in or launched attacks against but do not control.

Note: The Ukrainian counteroffensive layer displays areas previously assigned to the Russian control, Russian advances, or Russian claims layers where ISW now assesses that Ukrainian forces have established a presence beyond a short-term raid. Inclusion of an area on this layer does not imply that ISW assesses that the area is part of any upcoming Ukrainian counteroffensive operation.

Assessed Control of Terrain in Bakhmut as of May 31, 2023, 3:00 PM ET



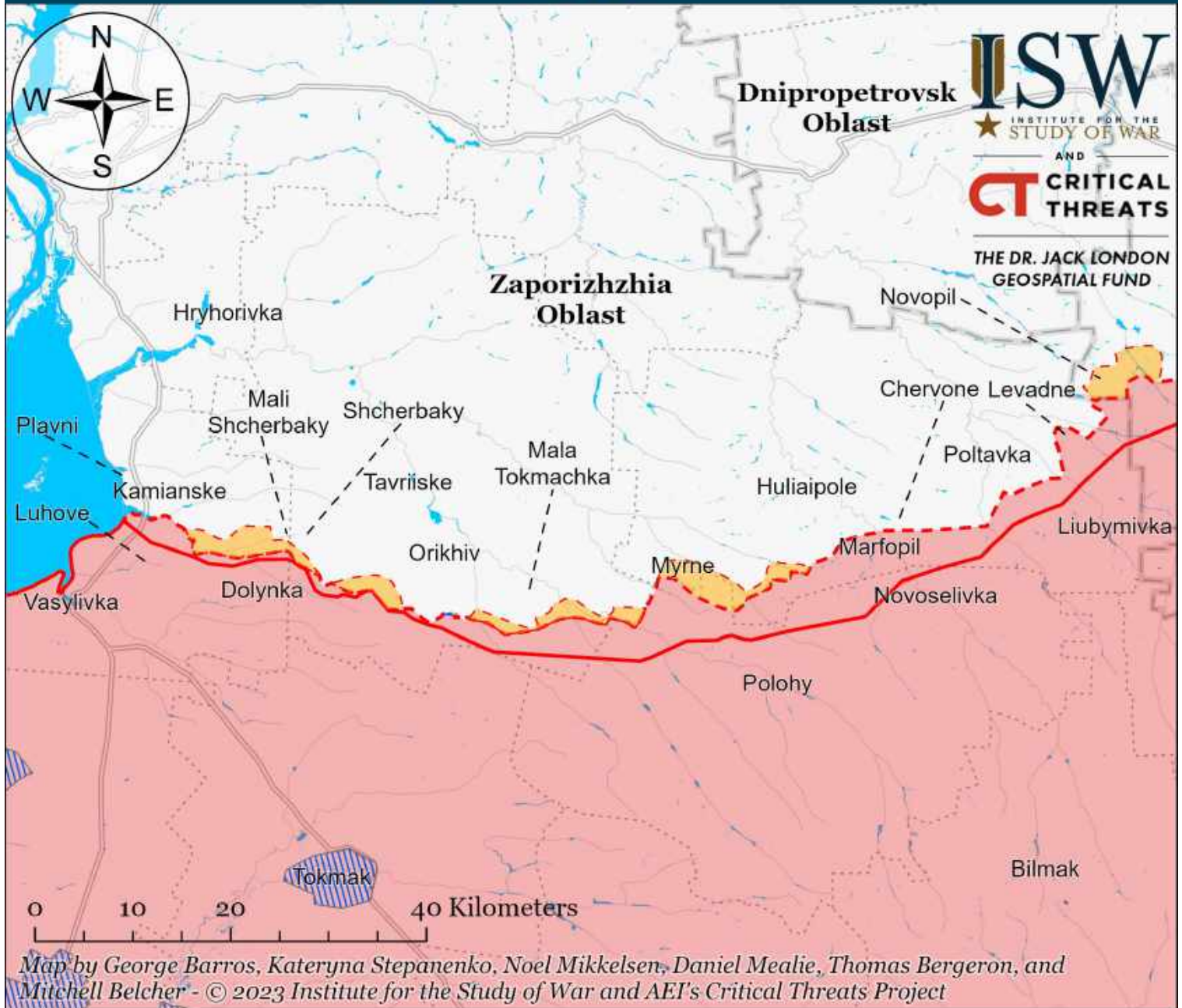
Map by George Barros, Kateryna Stepanenko, Noel Mikkelsen, Daniel Mealie, Thomas Bergeron, and Mitchell Belcher
 © 2023 Institute for the Study of War and AEI's Critical Threats Project

- | | | |
|---------------------------------------|--|-------------------------------------|
| Bakhmut City Limits | Assessed Russian-controlled Ukrainian Territory | Claimed Ukrainian Counteroffensives |
| Assessed Russian Advances in Ukraine* | Claimed Russian Control over Ukrainian Territory | Reported Ukrainian Partisan Warfare |

* Assessed Russian advances are areas where ISW assesses Russian forces have operated in or launched attacks against but do not control.

Note: The Ukrainian counteroffensive layer displays areas previously assigned to the Russian control, Russian advances, or Russian claims layers where ISW now assesses that Ukrainian forces have established a presence beyond a short-term raid. Inclusion of an area on this layer does not imply that ISW assesses that the area is part of any upcoming Ukrainian counteroffensive operation.

Assessed Control of Terrain Around Zaporizhzhia as of May 31, 2023, 3:00 PM ET

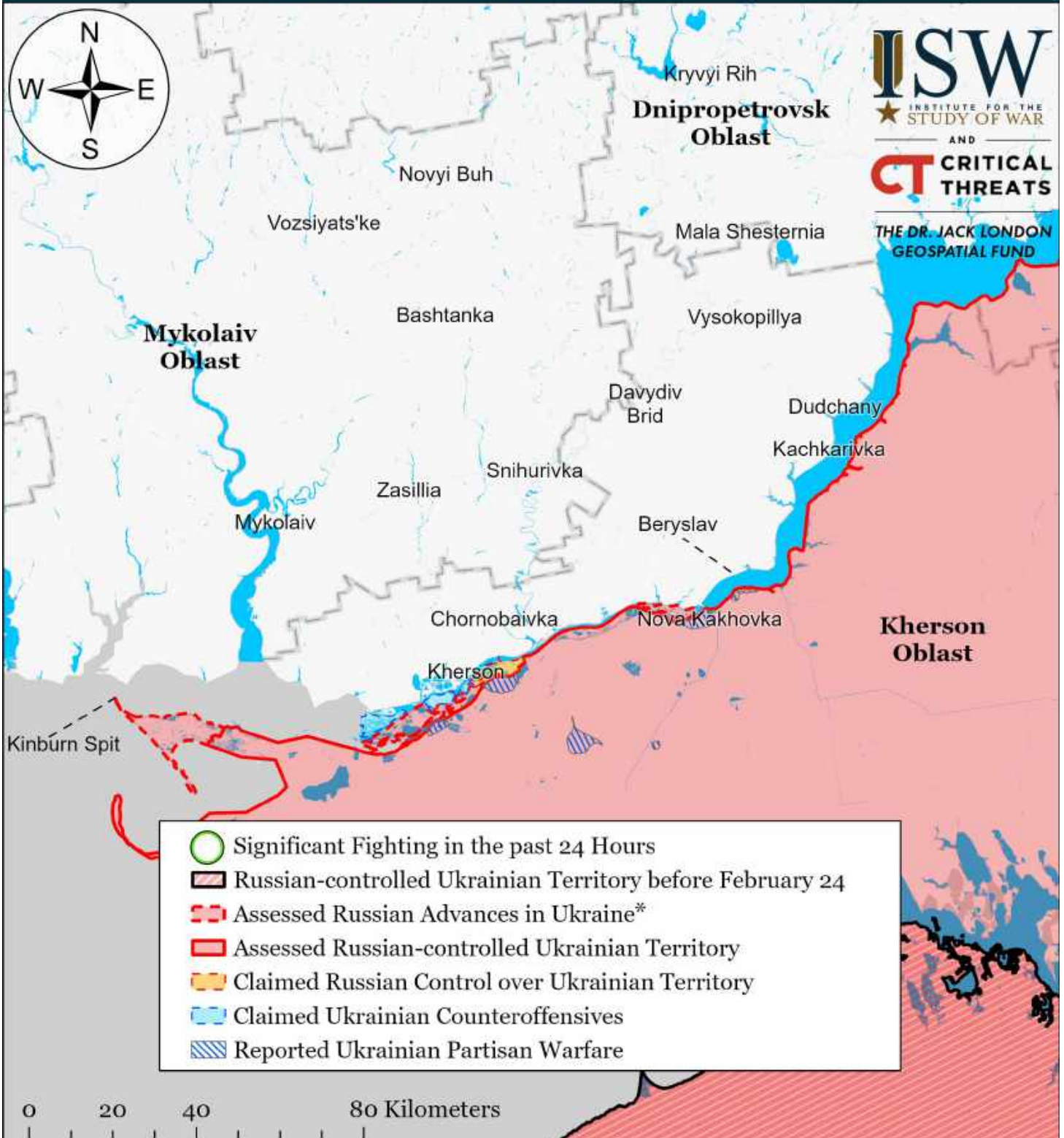


- Significant Fighting in the past 24 Hours
- Assessed Russian-controlled Ukrainian Territory
- Reported Ukrainian Partisan Warfare
- Russian-controlled Ukrainian Territory before February 24
- Claimed Russian Control over Ukrainian Territory
- Assessed Russian Advances in Ukraine*
- Claimed Ukrainian Counteroffensives

* Assessed Russian advances are areas where ISW assesses Russian forces have operated in or launched attacks against but do not control.

Note: The Ukrainian counteroffensive layer displays areas previously assigned to the Russian control, Russian advances, or Russian claims layers where ISW now assesses that Ukrainian forces have established a presence beyond a short-term raid. Inclusion of an area on this layer does not imply that ISW assesses that the area is part of any upcoming Ukrainian counteroffensive operation.

Assessed Control of Terrain Around Kherson and Mykolaiv as of May 31, 2023, 3:00 PM ET



Map by George Barros, Kateryna Stepanenko, Noel Mikkelsen, Daniel Mealie, Thomas Bergeron, and Mitchell Belcher - © 2023 Institute for the Study of War and AET's Critical Threats Project

* Assessed Russian advances are areas where ISW assesses Russian forces have operated in or launched attacks against but do not control.

Note: The Ukrainian counteroffensive layer displays areas previously assigned to the Russian control, Russian advances, or Russian claims layers where ISW now assesses that Ukrainian forces have established a presence beyond a short-term raid. Inclusion of an area on this layer does not imply that ISW assesses that the area is part of any upcoming Ukrainian counteroffensive operation.