

# Assessed Control of Terrain in Ukraine and Main Russian Maneuver Axes as of June 19, 2023, 3:00 PM ET

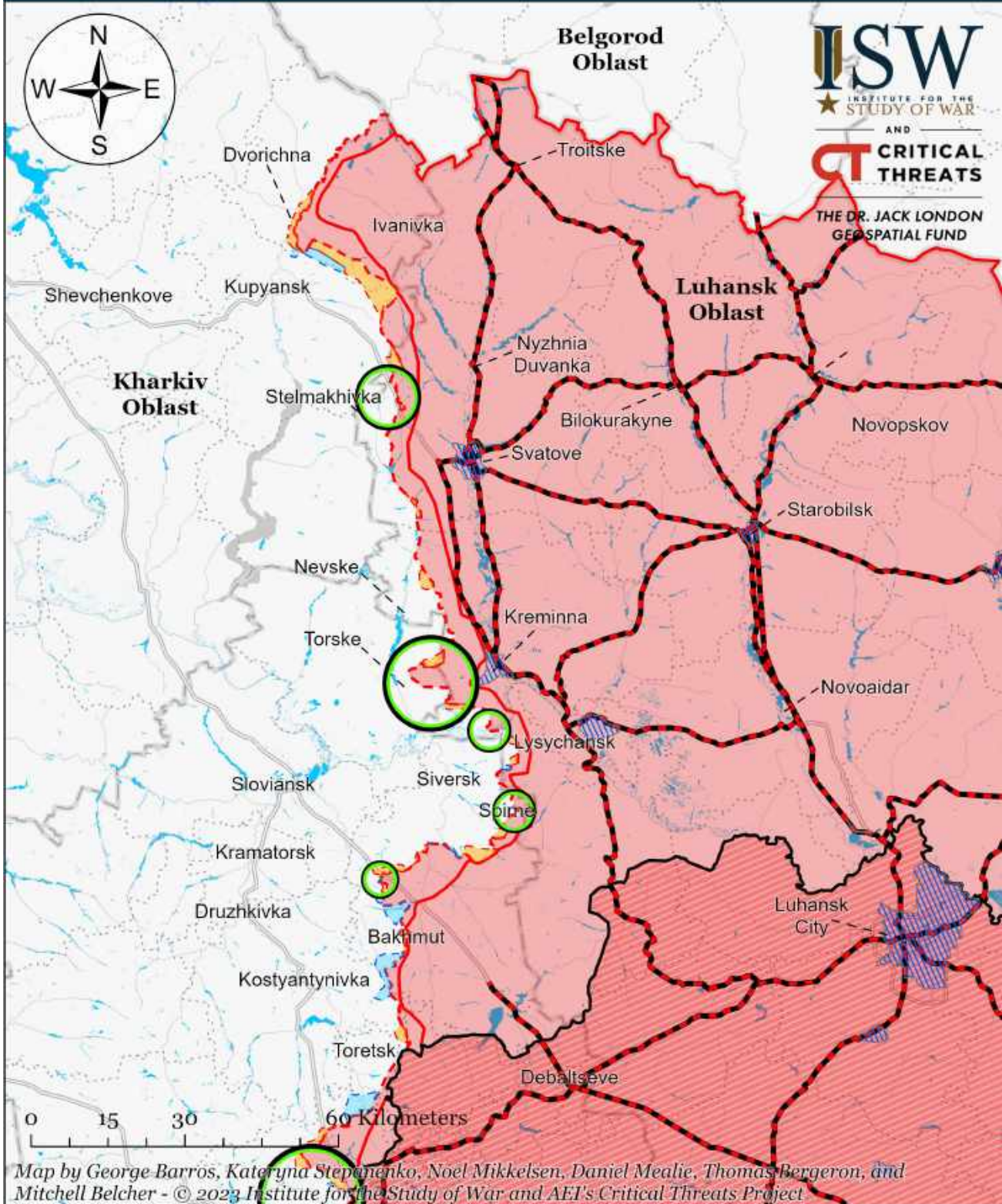


Map by George Barros, Kateryna Stepanenko, Noel Mikkelsen, Daniel Mealie, Thomas Bergeron, and Mitchell Belcher - © 2023 Institute for the Study of War and AEI's Critical Threats Project

\* Assessed Russian advances are areas where ISW assesses Russian forces have operated in or launched attacks against but do not control.



# Assessed Control of Terrain Around Luhansk Oblast as of June 19, 2023, 3:00 PM ET

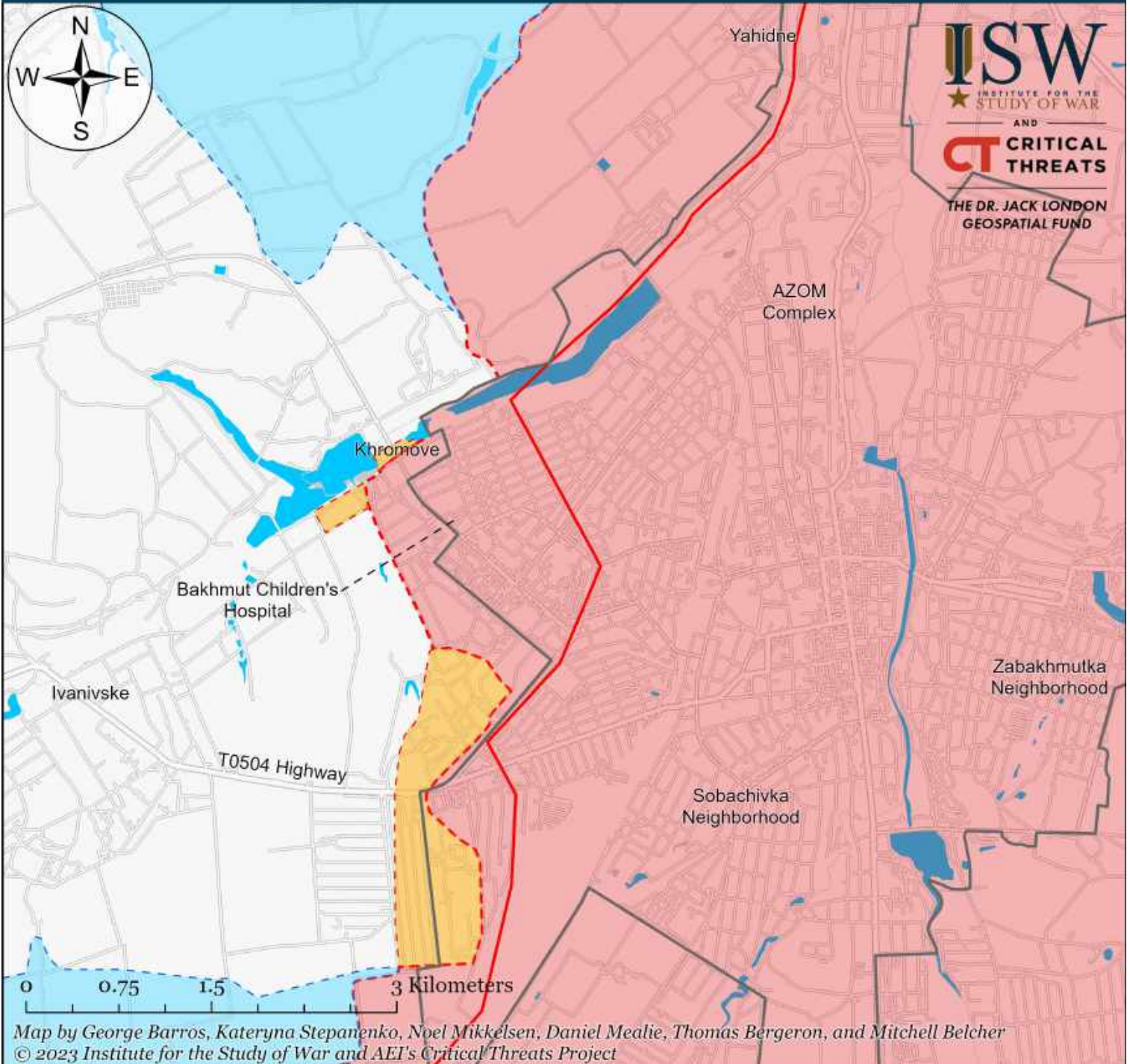


- Significant Fighting in the past 24 Hours
- Assessed Russian Advances in Ukraine\*
- Claimed Ukrainian Counteroffensives
- Russian Ground Lines of Communication
- Assessed Russian-controlled Ukrainian Territory
- Reported Ukrainian Partisan Warfare
- Russian-controlled Ukrainian Territory before February 24
- Claimed Russian Control over Ukrainian Territory

\* Assessed Russian advances are areas where ISW assesses Russian forces have operated in or launched attacks against but do not control.



# Assessed Control of Terrain in Bakhmut as of June 19, 2023, 3:00 PM ET

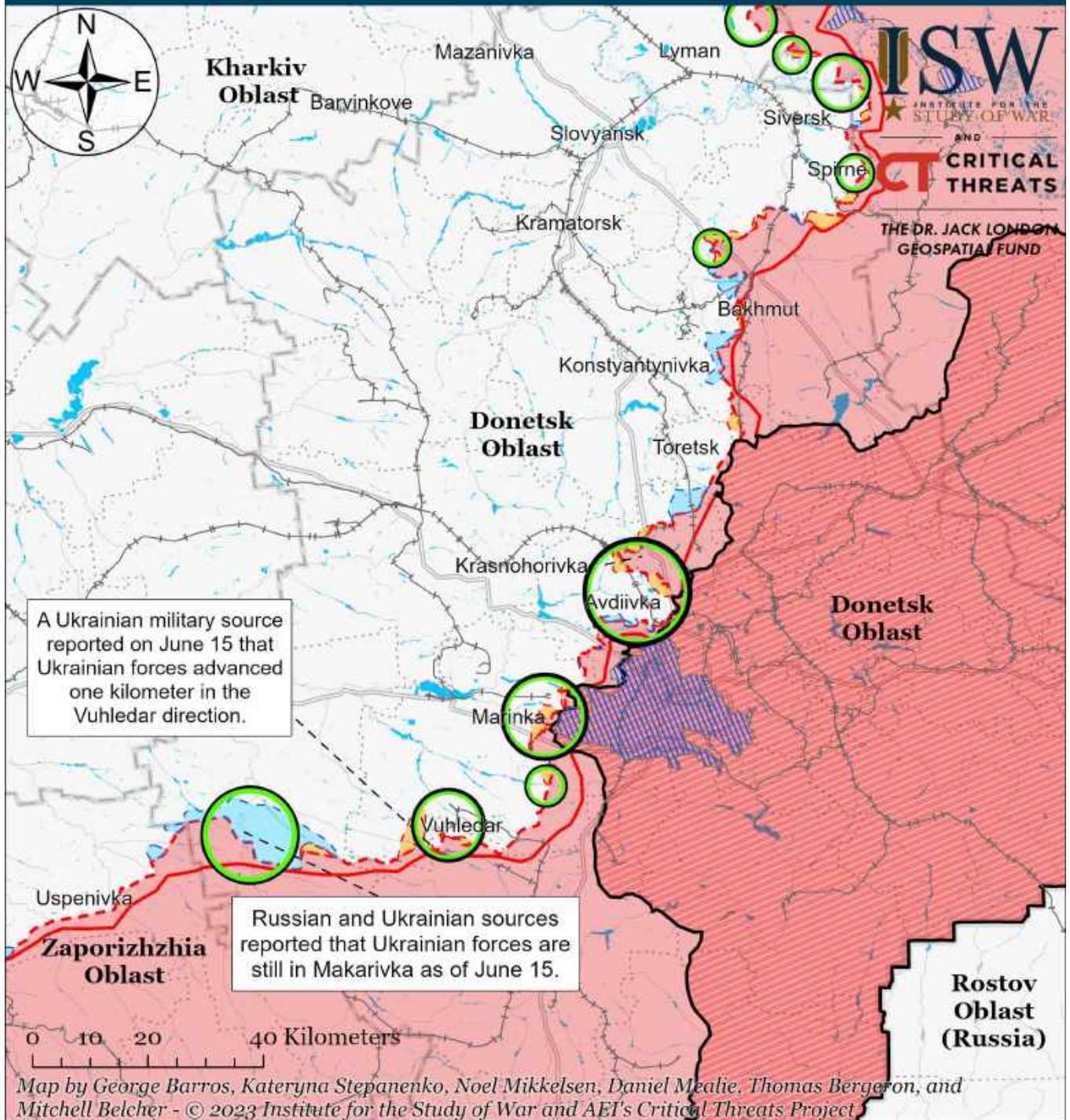


- |                                       |  |                                     |
|---------------------------------------|--|-------------------------------------|
| Bakhmut City Limits                   | Assessed Russian-controlled Ukrainian Territory  | Claimed Ukrainian Counteroffensives |
| Assessed Russian Advances in Ukraine* | Claimed Russian Control over Ukrainian Territory | Reported Ukrainian Partisan Warfare |

\* Assessed Russian advances are areas where ISW assesses Russian forces have operated in or launched attacks against but do not control.



# Assessed Control of Terrain Around Donetsk as of June 19, 2023, 3:00 PM ET



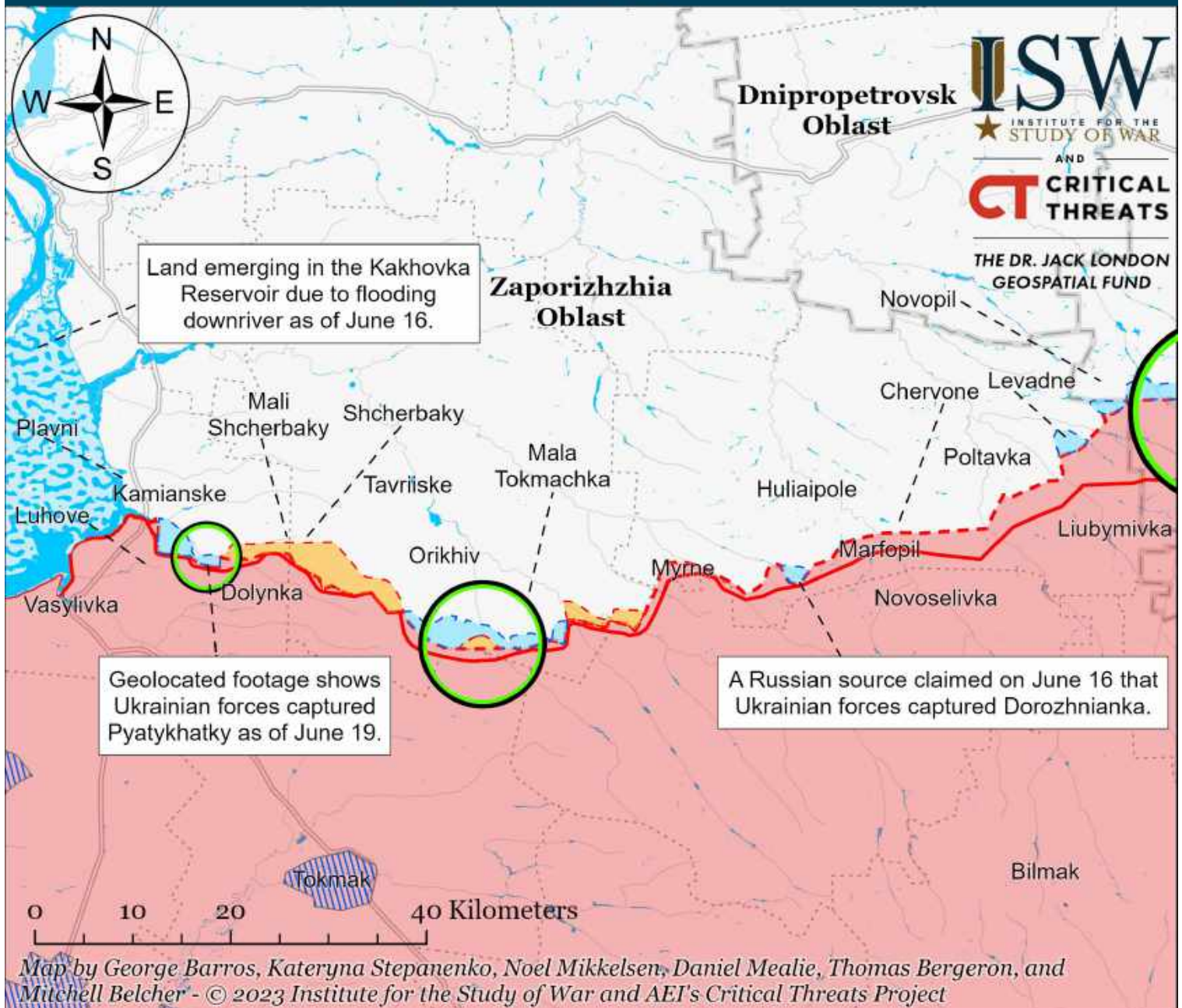
- Significant Fighting in the past 24 Hours
- Assessed Russian-controlled Ukrainian Territory
- Major Railroads
- Russian-controlled Ukrainian Territory before February 24
- Claimed Russian Control over Ukrainian Territory
- Reported Ukrainian Partisan Warfare
- Assessed Russian Advances in Ukraine\*
- Claimed Ukrainian Counteroffensives

\* Assessed Russian advances are areas where ISW assesses Russian forces have operated in or launched attacks against but do not control.

Note: Avdiivka City Military Administration Head Vitaliy Barabash reported on June 18 that Ukrainian forces advanced more than a kilometer north of Avdiivka on the Donetsk City frontline over the past two weeks.



# Assessed Control of Terrain Around Zaporizhzhia as of June 19, 2023, 3:00 PM ET



Map by George Barros, Kateryna Stepanenko, Noel Mikkelsen, Daniel Mealie, Thomas Bergeron, and Mitchell Belcher - © 2023 Institute for the Study of War and AEI's Critical Threats Project

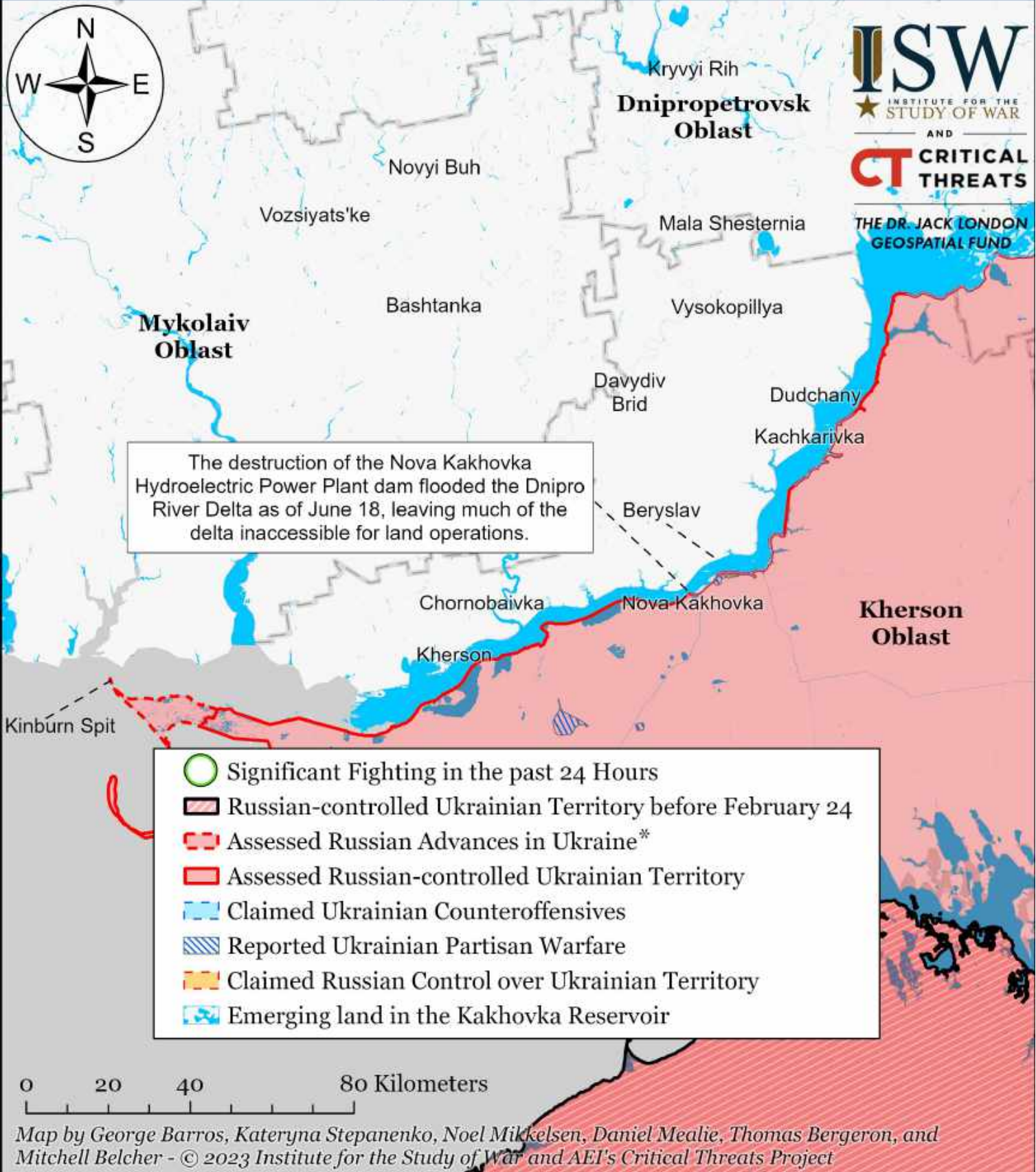
- Significant Fighting in the past 24 Hours
- Assessed Russian-controlled Ukrainian Territory
- Reported Ukrainian Partisan Warfare
- Russian-controlled Ukrainian Territory before February 24
- Claimed Russian Control over Ukrainian Territory
- Emerging land in the Kakhovka Reservoir
- Assessed Russian Advances in Ukraine\*
- Claimed Ukrainian Counteroffensives

\* Assessed Russian advances are areas where ISW assesses Russian forces have operated in or launched attacks against but do not control.

Note: Ukrainian Deputy Defense Minister Hanna Malyar reported on June 16 that Ukrainian forces advanced up to two kilometers in all directions in southern Ukraine but ISW cannot assess the exact areas of Ukrainian advances at this time.



# Assessed Control of Terrain Around Kherson and Mykolaiv as of June 19, 2023, 3:00 PM ET



Map by George Barros, Kateryna Stepanenko, Noel Mikkelsen, Daniel Mealie, Thomas Bergeron, and Mitchell Belcher - © 2023 Institute for the Study of War and AEI's Critical Threats Project

\* Assessed Russian advances are areas where ISW assesses Russian forces have operated in or launched attacks against but do not control.



# Assessed Control of Terrain in Ukraine and Main Russian Maneuver Axes as of June 18, 2023, 3:00 PM ET

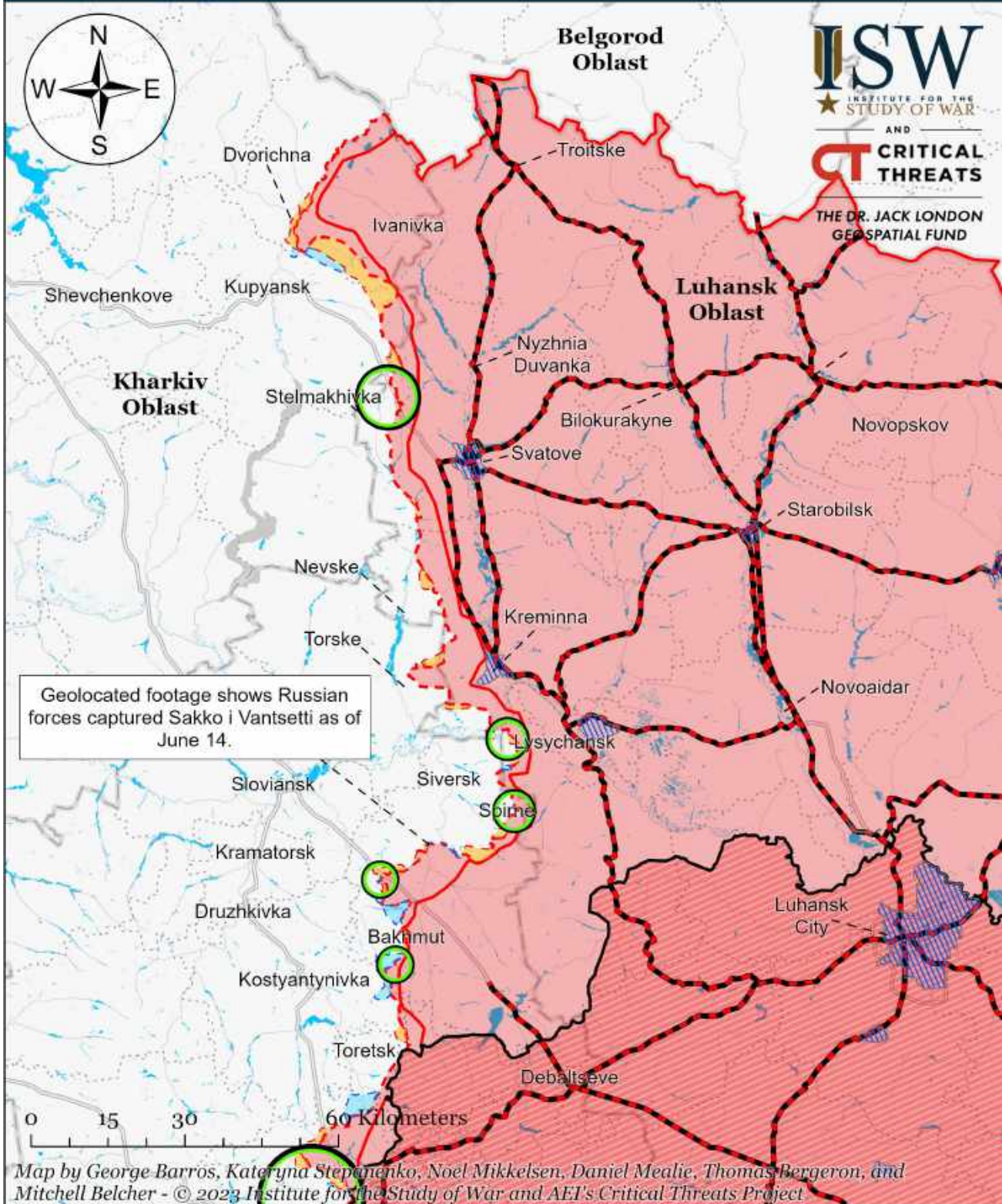


Map by George Barros, Kateryna Stepanenko, Noel Mikkelsen, Daniel Mealie, Thomas Bergeron, and Mitchell Belcher - © 2023 Institute for the Study of War and AEI's Critical Threats Project

\* Assessed Russian advances are areas where ISW assesses Russian forces have operated in or launched attacks against but do not control.



# Assessed Control of Terrain Around Luhansk Oblast as of June 18, 2023, 3:00 PM ET

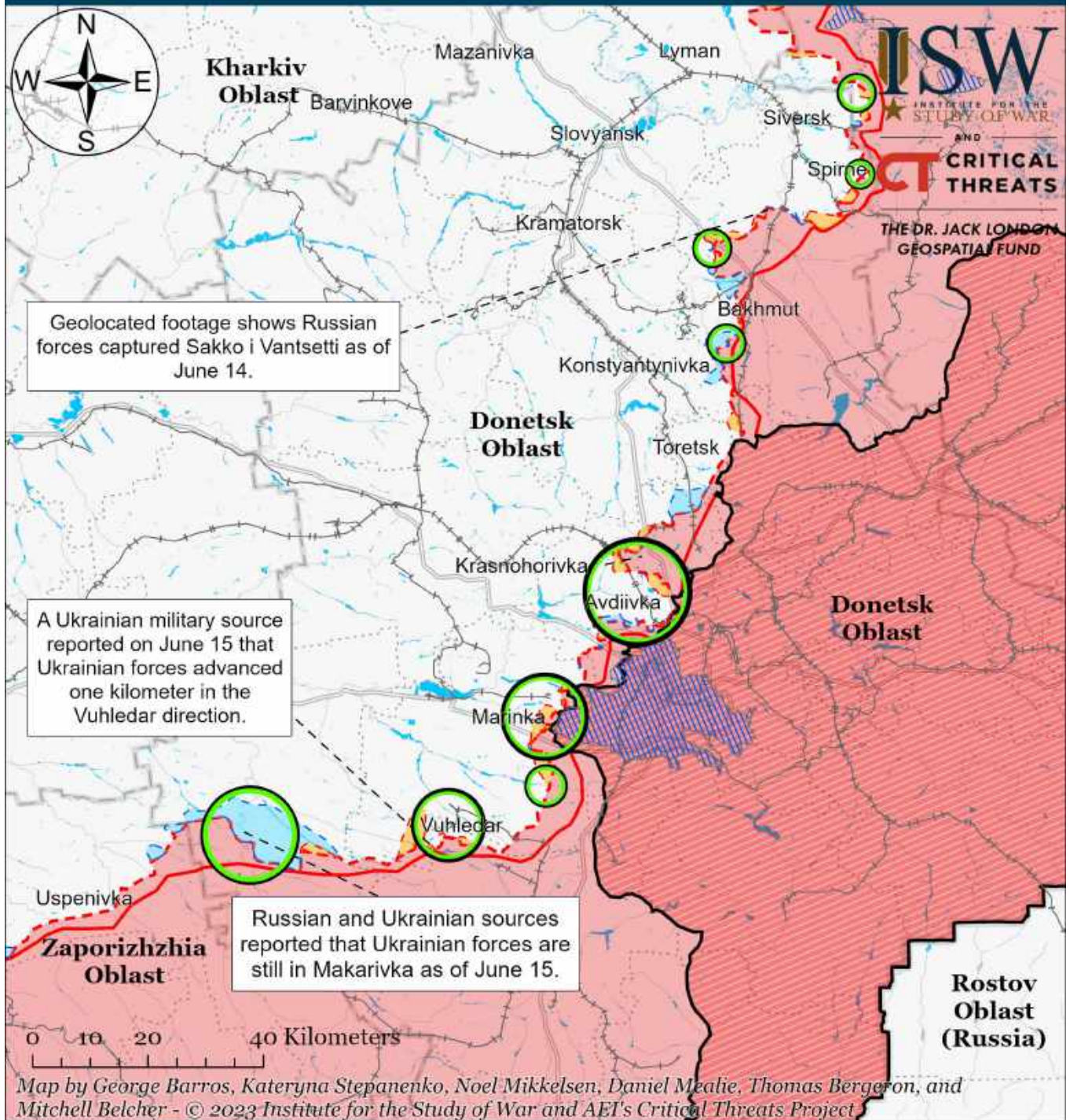


- Significant Fighting in the past 24 Hours
- Assessed Russian Advances in Ukraine\*
- Claimed Ukrainian Counteroffensives
- Russian Ground Lines of Communication
- Assessed Russian-controlled Ukrainian Territory
- Reported Ukrainian Partisan Warfare
- Russian-controlled Ukrainian Territory before February 24
- Claimed Russian Control over Ukrainian Territory

\* Assessed Russian advances are areas where ISW assesses Russian forces have operated in or launched attacks against but do not control.



# Assessed Control of Terrain Around Donetsk as of June 18, 2023, 3:00 PM ET



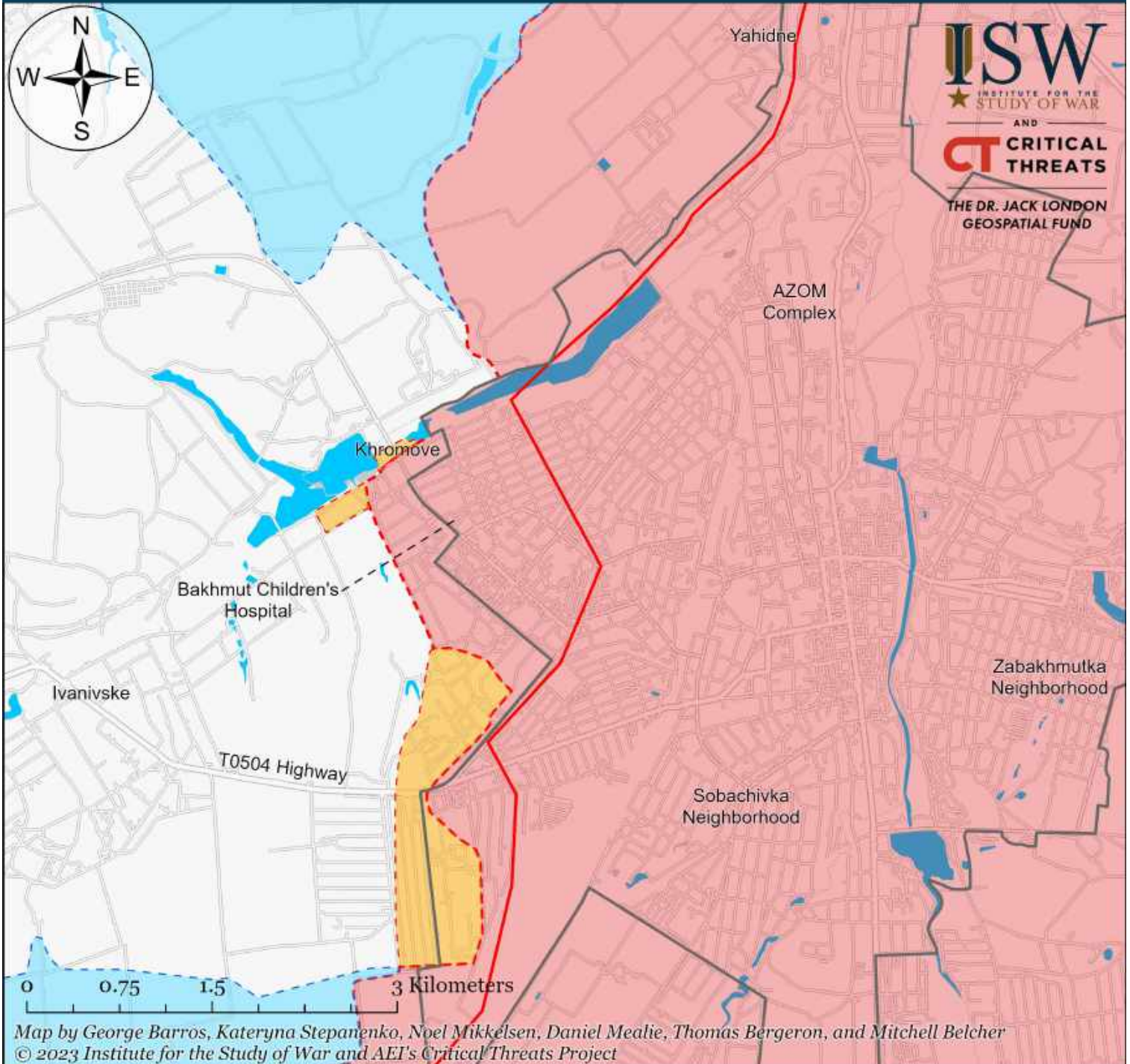
- Significant Fighting in the past 24 Hours
- Assessed Russian-controlled Ukrainian Territory
- Russian-controlled Ukrainian Territory before February 24
- Claimed Russian Control over Ukrainian Territory
- Assessed Russian Advances in Ukraine\*
- Claimed Ukrainian Counteroffensives
- Major Railroads
- Reported Ukrainian Partisan Warfare

\* Assessed Russian advances are areas where ISW assesses Russian forces have operated in or launched attacks against but do not control.

Note: Avdiivka City Military Administration Head Vitaliy Barabash reported on June 18 that Ukrainian forces advanced more than a kilometer north of Avdiivka on the Donetsk City frontline over the past two weeks.



# Assessed Control of Terrain in Bakhmut as of June 18, 2023, 3:00 PM ET



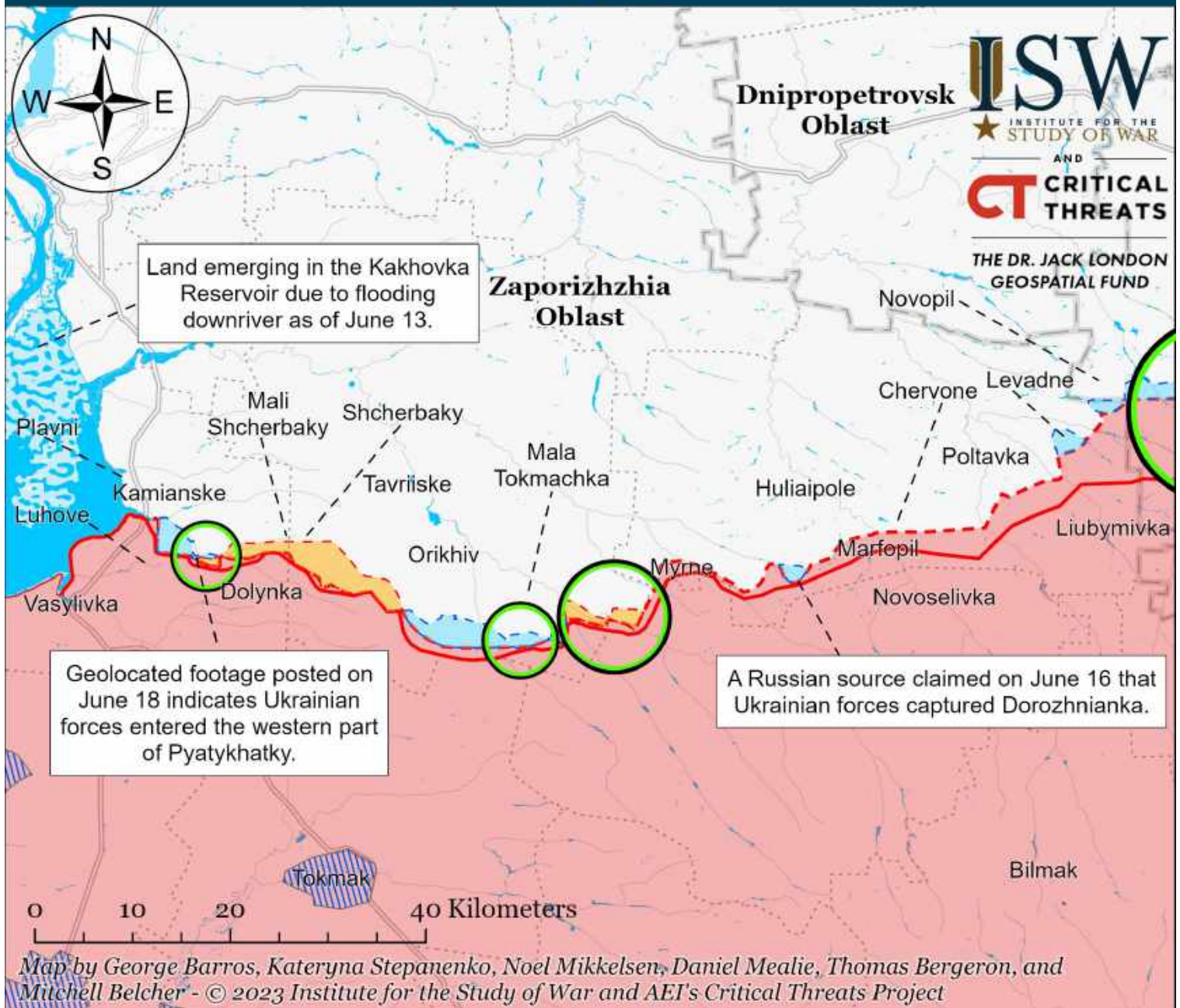
Map by George Barros, Kateryna Stepanenko, Noel Mikkelsen, Daniel Mealie, Thomas Bergeron, and Mitchell Belcher  
© 2023 Institute for the Study of War and AEI's Critical Threats Project

- |                                       |  |                                     |
|---------------------------------------|--|-------------------------------------|
| Bakhmut City Limits                   | Assessed Russian-controlled Ukrainian Territory  | Claimed Ukrainian Counteroffensives |
| Assessed Russian Advances in Ukraine* | Claimed Russian Control over Ukrainian Territory | Reported Ukrainian Partisan Warfare |

\* Assessed Russian advances are areas where ISW assesses Russian forces have operated in or launched attacks against but do not control.



# Assessed Control of Terrain Around Zaporizhzhia as of June 18, 2023, 3:00 PM ET



\* Assessed Russian advances are areas where ISW assesses Russian forces have operated in or launched attacks against but do not control.

Note: Ukrainian Deputy Defense Minister Hanna Malyar reported on June 16 that Ukrainian forces advanced up to two kilometers in all directions in southern Ukraine but ISW cannot assess the exact areas of Ukrainian advances at this time.



# Assessed Control of Terrain Around Kherson and Mykolaiv as of June 18, 2023, 3:00 PM ET



The destruction of the Nova Kakhovka Hydroelectric Power Plant dam flooded the Dnipro River Delta as of June 18, leaving much of the delta inaccessible for land operations.

- Significant Fighting in the past 24 Hours
- Russian-controlled Ukrainian Territory before February 24
- Assessed Russian Advances in Ukraine\*
- Assessed Russian-controlled Ukrainian Territory
- Claimed Ukrainian Counteroffensives
- Reported Ukrainian Partisan Warfare
- Claimed Russian Control over Ukrainian Territory
- Emerging land in the Kakhovka Reservoir

0 20 40 80 Kilometers

Map by George Barros, Kateryna Stepanenko, Noel Mikkelsen, Daniel Mealie, Thomas Bergeron, and Mitchell Belcher - © 2023 Institute for the Study of War and AEI's Critical Threats Project

\* Assessed Russian advances are areas where ISW assesses Russian forces have operated in or launched attacks against but do not control.



# Assessed Control of Terrain in Ukraine and Main Russian Maneuver Axes as of June 17, 2023, 3:00 PM ET

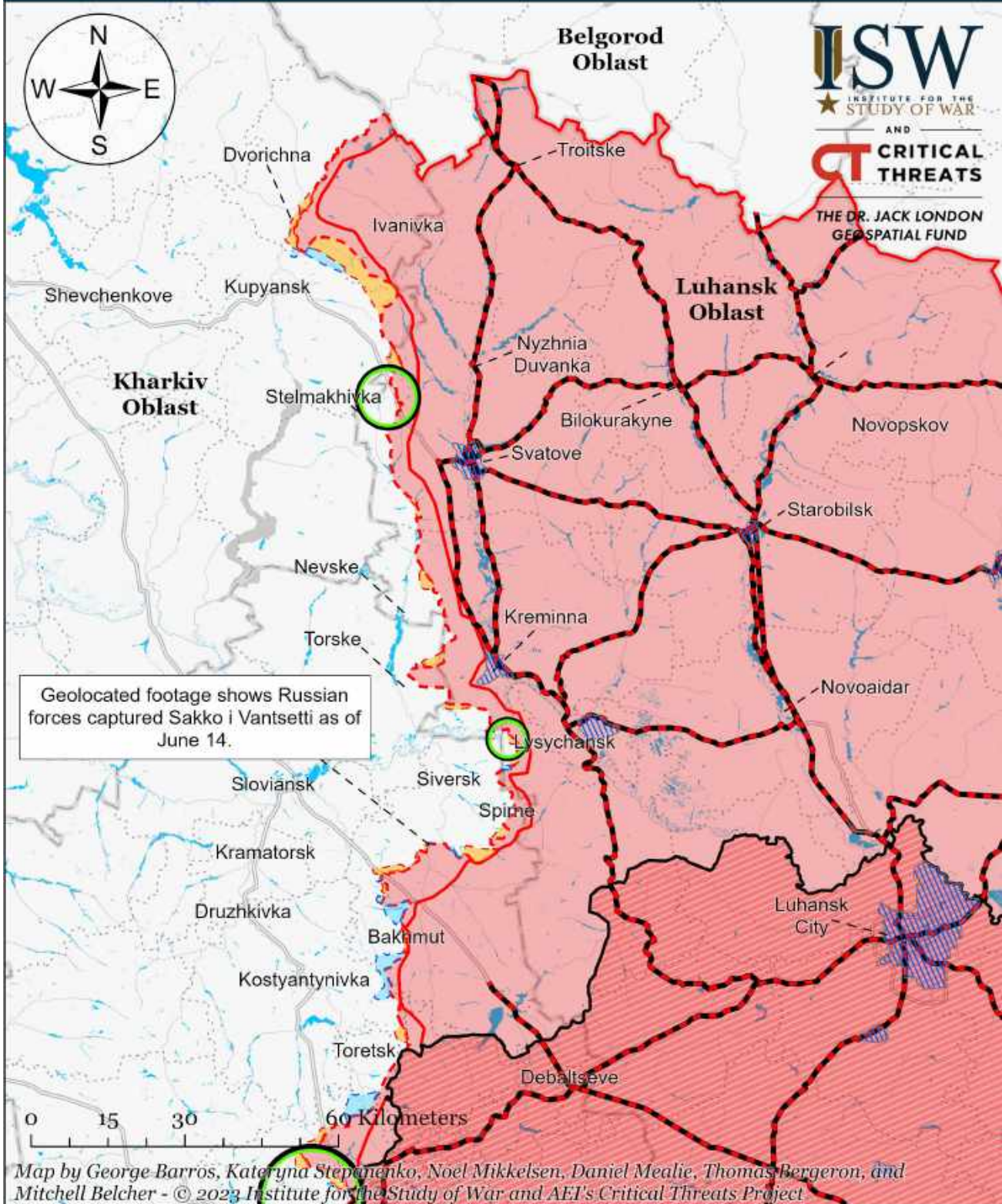


Map by George Barros, Kateryna Stepanenko, Noel Mikkelsen, Daniel Mealie, Thomas Bergeron, and Mitchell Belcher - © 2023 Institute for the Study of War and AEI's Critical Threats Project

\* Assessed Russian advances are areas where ISW assesses Russian forces have operated in or launched attacks against but do not control.



# Assessed Control of Terrain Around Luhansk Oblast as of June 17, 2023, 3:00 PM ET

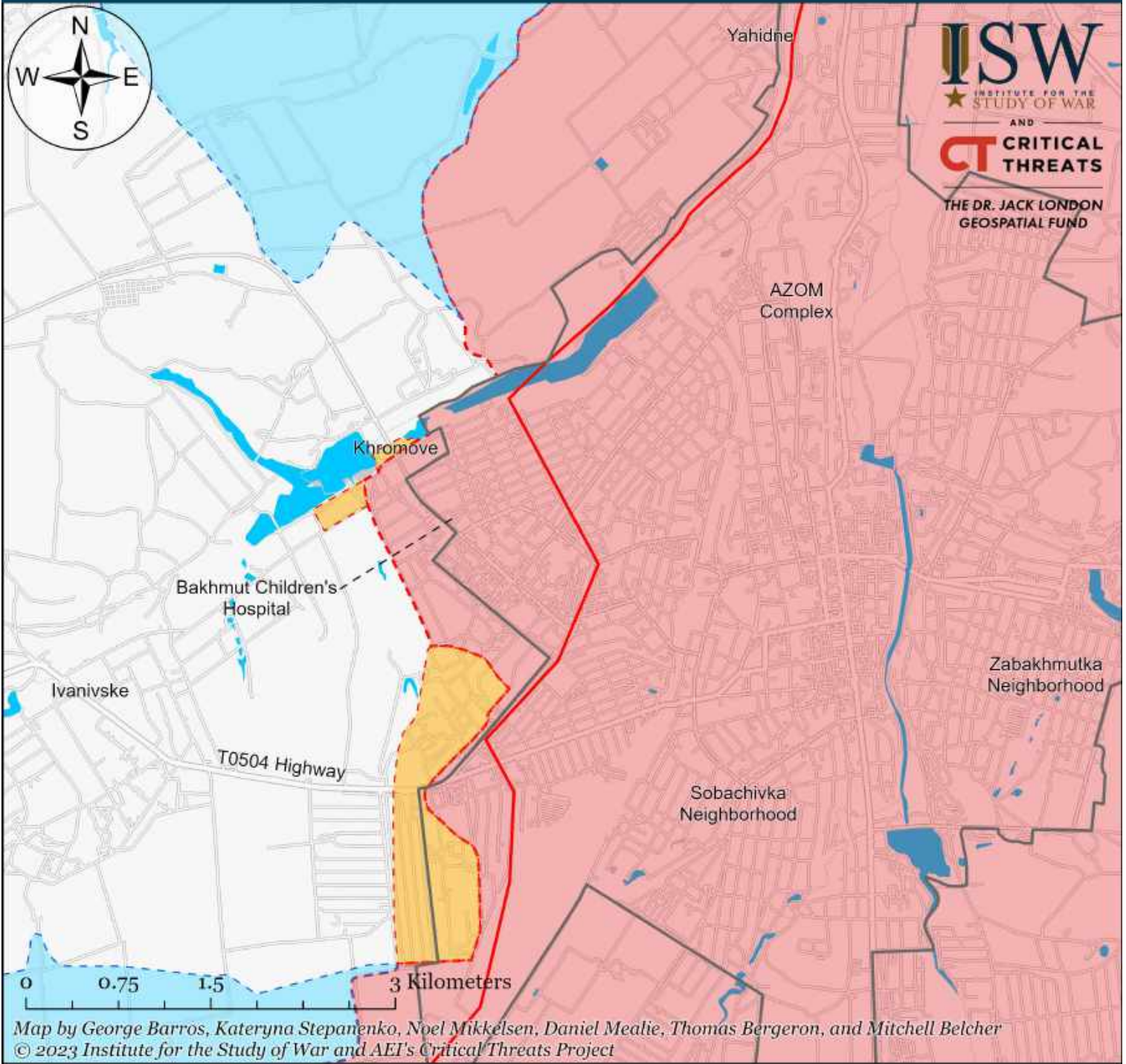


- Significant Fighting in the past 24 Hours
- Assessed Russian Advances in Ukraine\*
- Claimed Ukrainian Counteroffensives
- Russian Ground Lines of Communication
- Assessed Russian-controlled Ukrainian Territory
- Reported Ukrainian Partisan Warfare
- Russian-controlled Ukrainian Territory before February 24
- Claimed Russian Control over Ukrainian Territory

\* Assessed Russian advances are areas where ISW assesses Russian forces have operated in or launched attacks against but do not control.



# Assessed Control of Terrain in Bakhmut as of June 17, 2023, 3:00 PM ET

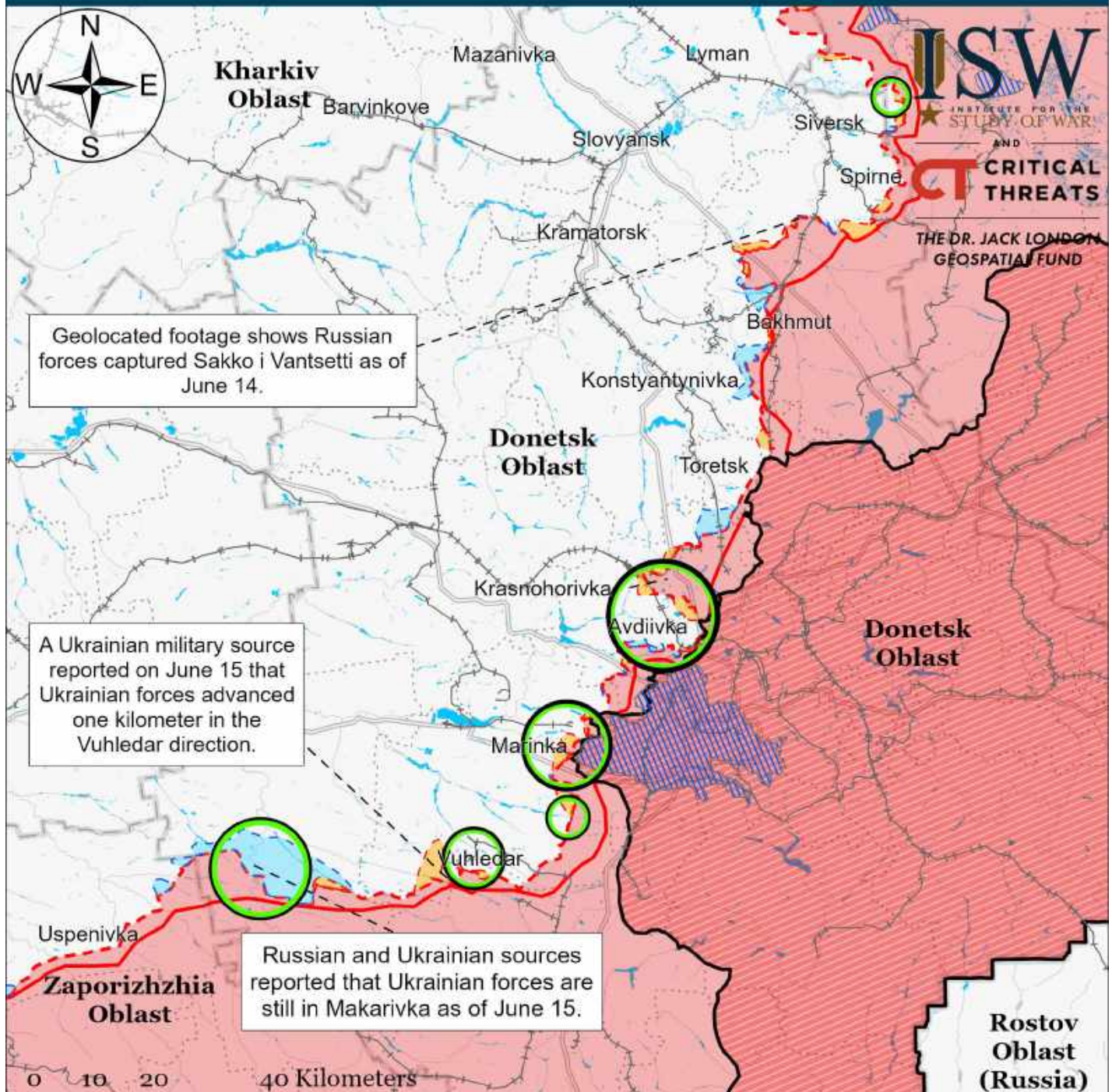


- Bakhmut City Limits
- Assessed Russian-controlled Ukrainian Territory
- Assessed Russian Advances in Ukraine\*
- Claimed Russian Control over Ukrainian Territory
- Claimed Ukrainian Counteroffensives
- Reported Ukrainian Partisan Warfare

\* Assessed Russian advances are areas where ISW assesses Russian forces have operated in or launched attacks against but do not control.



# Assessed Control of Terrain Around Donetsk as of June 17, 2023, 3:00 PM ET



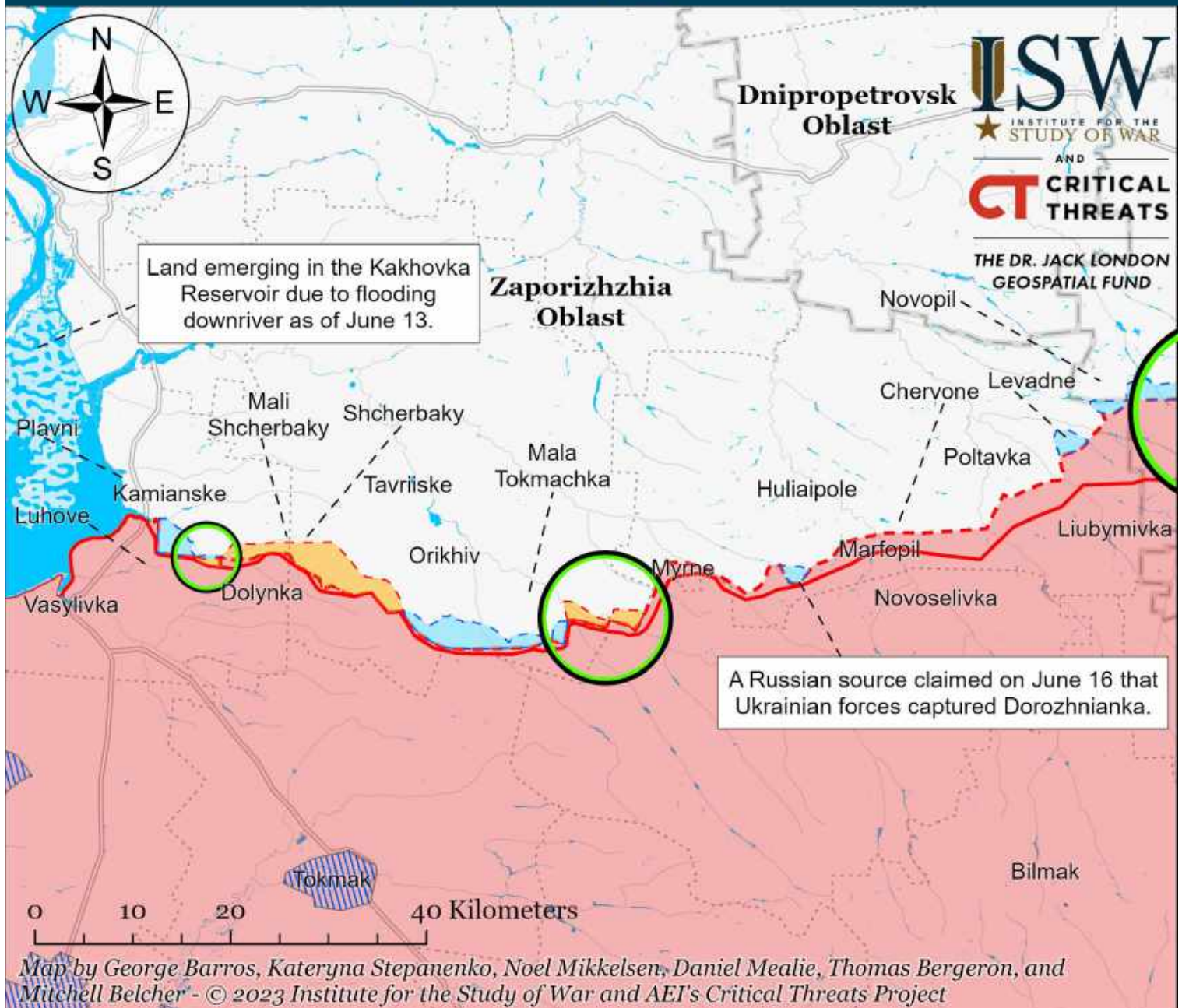
Map by George Barros, Kateryna Stepanenko, Noel Mikkelsen, Daniel Mealie, Thomas Bergeron, and Mitchell Belcher - © 2023 Institute for the Study of War and AEI's Critical Threats Project

- Significant Fighting in the past 24 Hours
- Assessed Russian-controlled Ukrainian Territory
- Claimed Russian Control over Ukrainian Territory
- Assessed Russian Advances in Ukraine\*
- Claimed Ukrainian Counteroffensives
- Major Railroads
- Reported Ukrainian Partisan Warfare

\* Assessed Russian advances are areas where ISW assesses Russian forces have operated in or launched attacks against but do not control.



# Assessed Control of Terrain Around Zaporizhzhia as of June 17, 2023, 3:00 PM ET



- Significant Fighting in the past 24 Hours
- Assessed Russian-controlled Ukrainian Territory
- Reported Ukrainian Partisan Warfare
- Russian-controlled Ukrainian Territory before February 24
- Claimed Russian Control over Ukrainian Territory
- Emerging land in the Kakhovka Reservoir
- Assessed Russian Advances in Ukraine\*
- Claimed Ukrainian Counteroffensives

\* Assessed Russian advances are areas where ISW assesses Russian forces have operated in or launched attacks against but do not control.

Note: Ukrainian Deputy Defense Minister Hanna Malyar reported on June 16 that Ukrainian forces advanced up to two kilometers in all directions in southern Ukraine but ISW cannot assess the exact areas of Ukrainian advances at this time.



# Assessed Control of Terrain Around Kherson and Mykolaiv as of June 17, 2023, 3:00 PM ET



- Significant Fighting in the past 24 Hours
- Russian-controlled Ukrainian Territory before February 24
- Assessed Russian Advances in Ukraine\*
- Assessed Russian-controlled Ukrainian Territory
- Claimed Ukrainian Counteroffensives
- Reported Ukrainian Partisan Warfare
- Claimed Russian Control over Ukrainian Territory
- Emerging land in the Kakhovka Reservoir

0 20 40 80 Kilometers

Map by George Barros, Kateryna Stepanenko, Noel Mikkelsen, Daniel Mealie, Thomas Bergeron, and Mitchell Belcher - © 2023 Institute for the Study of War and AEI's Critical Threats Project

\* Assessed Russian advances are areas where ISW assesses Russian forces have operated in or launched attacks against but do not control.



# Assessed Control of Terrain in Ukraine and Main Russian Maneuver Axes as of June 16, 2023, 3:00 PM ET

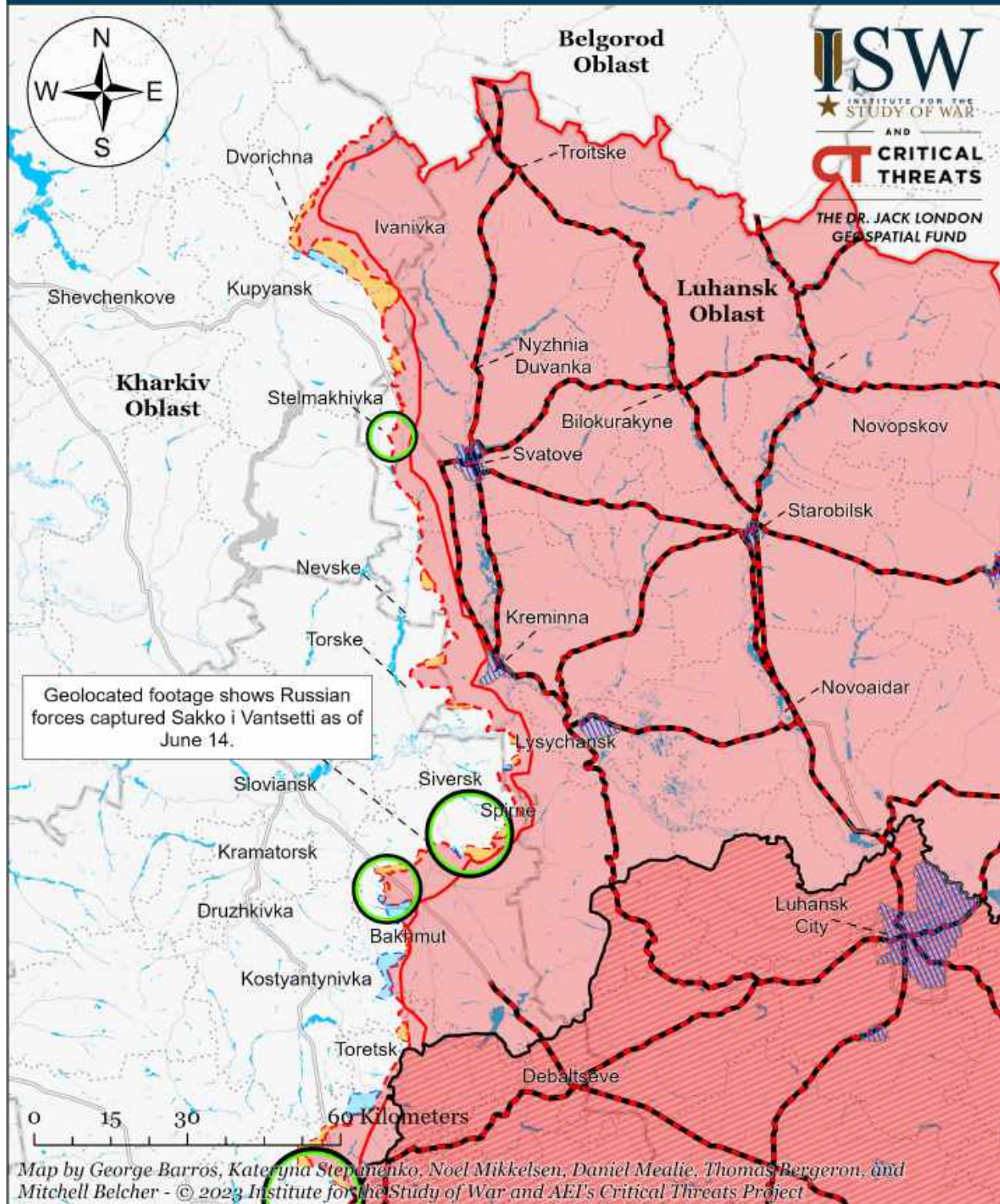


Map by George Barros, Kateryna Stepanenko, Noel Mikkelsen, Daniel Mealie, Thomas Bergeron, and Mitchell Belcher - © 2023 Institute for the Study of War and AEI's Critical Threats Project

\* Assessed Russian advances are areas where ISW assesses Russian forces have operated in or launched attacks against but do not control.



# Assessed Control of Terrain Around Luhansk Oblast as of June 16, 2023, 3:00 PM ET



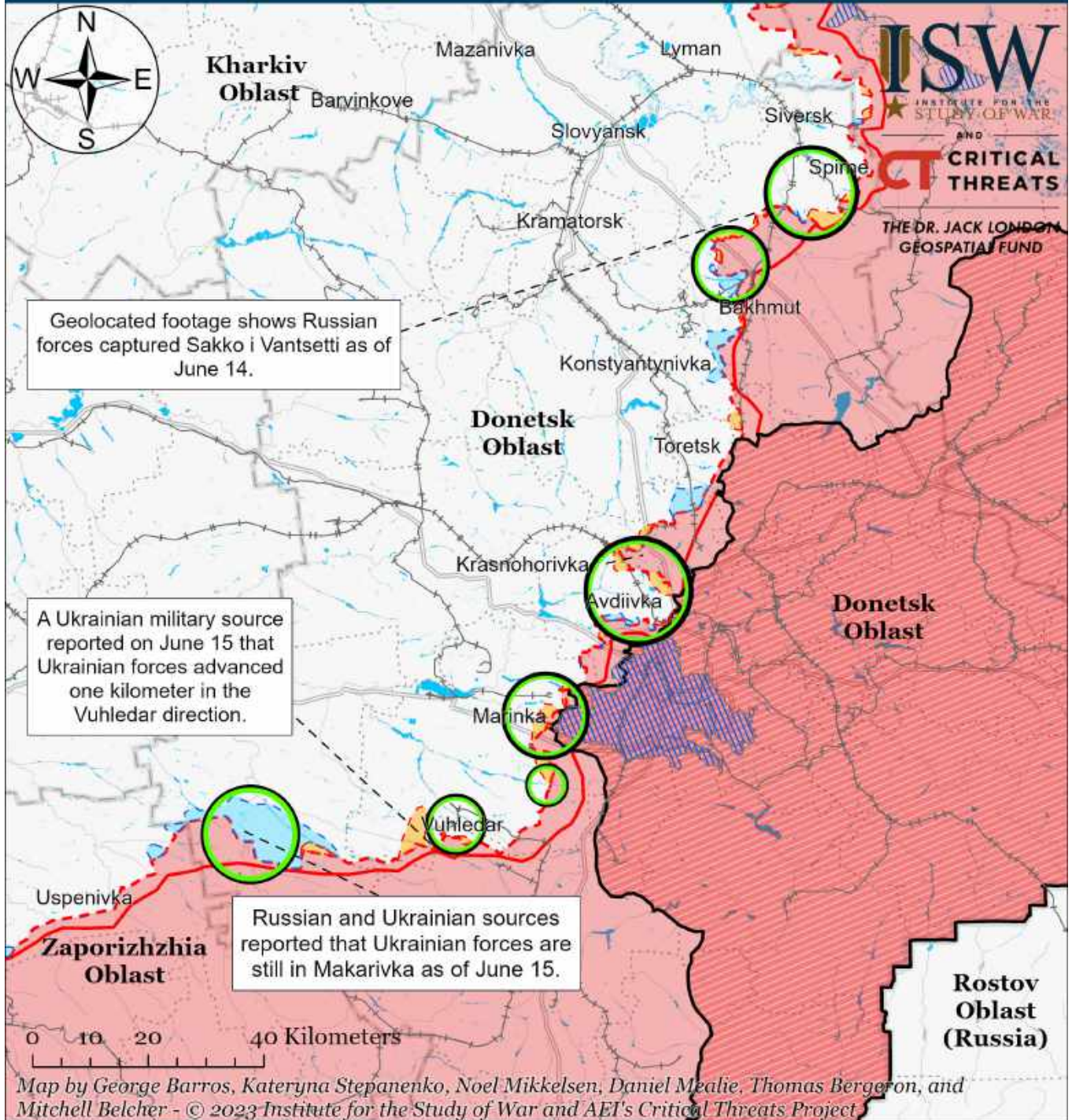
- Significant Fighting in the past 24 Hours
- Assessed Russian Advances in Ukraine\*
- Claimed Ukrainian Counteroffensives
- Russian Ground Lines of Communication
- Assessed Russian-controlled Ukrainian Territory
- Reported Ukrainian Partisan Warfare
- Russian-controlled Ukrainian Territory before February 24
- Claimed Russian Control over Ukrainian Territory

\* Assessed Russian advances are areas where ISW assesses Russian forces have operated in or launched attacks against but do not control.

Note: Ukrainian Deputy Defense Minister Hanna Malyar reported on June 14 that Ukrainian forces advanced 200 to 500 meters in the Bakhmut direction over the past 24 hours but ISW cannot assess the exact areas of Ukrainian advances at this time.



# Assessed Control of Terrain Around Donetsk as of June 16, 2023, 3:00 PM ET



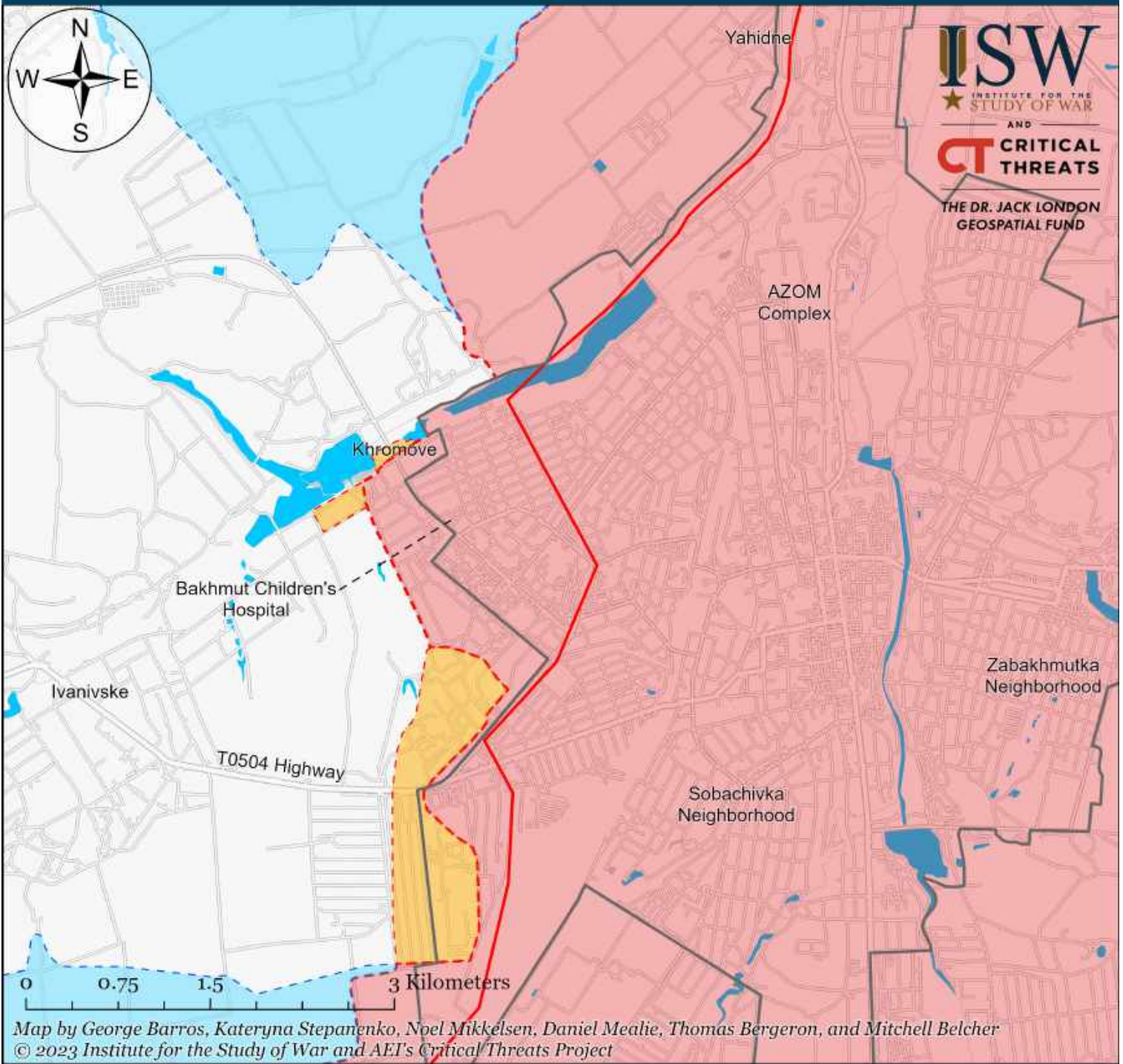
- Significant Fighting in the past 24 Hours
- Assessed Russian-controlled Ukrainian Territory
- Russian-controlled Ukrainian Territory before February 24
- Assessed Russian Advances in Ukraine\*
- Claimed Russian Control over Ukrainian Territory
- Claimed Ukrainian Counteroffensives
- Major Railroads
- Reported Ukrainian Partisan Warfare

\* Assessed Russian advances are areas where ISW assesses Russian forces have operated in or launched attacks against but do not control.

Note: Ukrainian Tavriivsk Defense Forces spokesperson Valerii Sershen reported on June 15 that Ukrainian forces advanced up to 1 km in the Vuhledar direction over the past 24 hours but ISW cannot assess the exact areas of Ukrainian advances at this time.



# Assessed Control of Terrain in Bakhmut as of June 16, 2023, 3:00 PM ET



**ISW**  
 INSTITUTE FOR THE  
 STUDY OF WAR  
 AND  
**CT** CRITICAL  
 THREATS  
 THE DR. JACK LONDON  
 GEOSPATIAL FUND

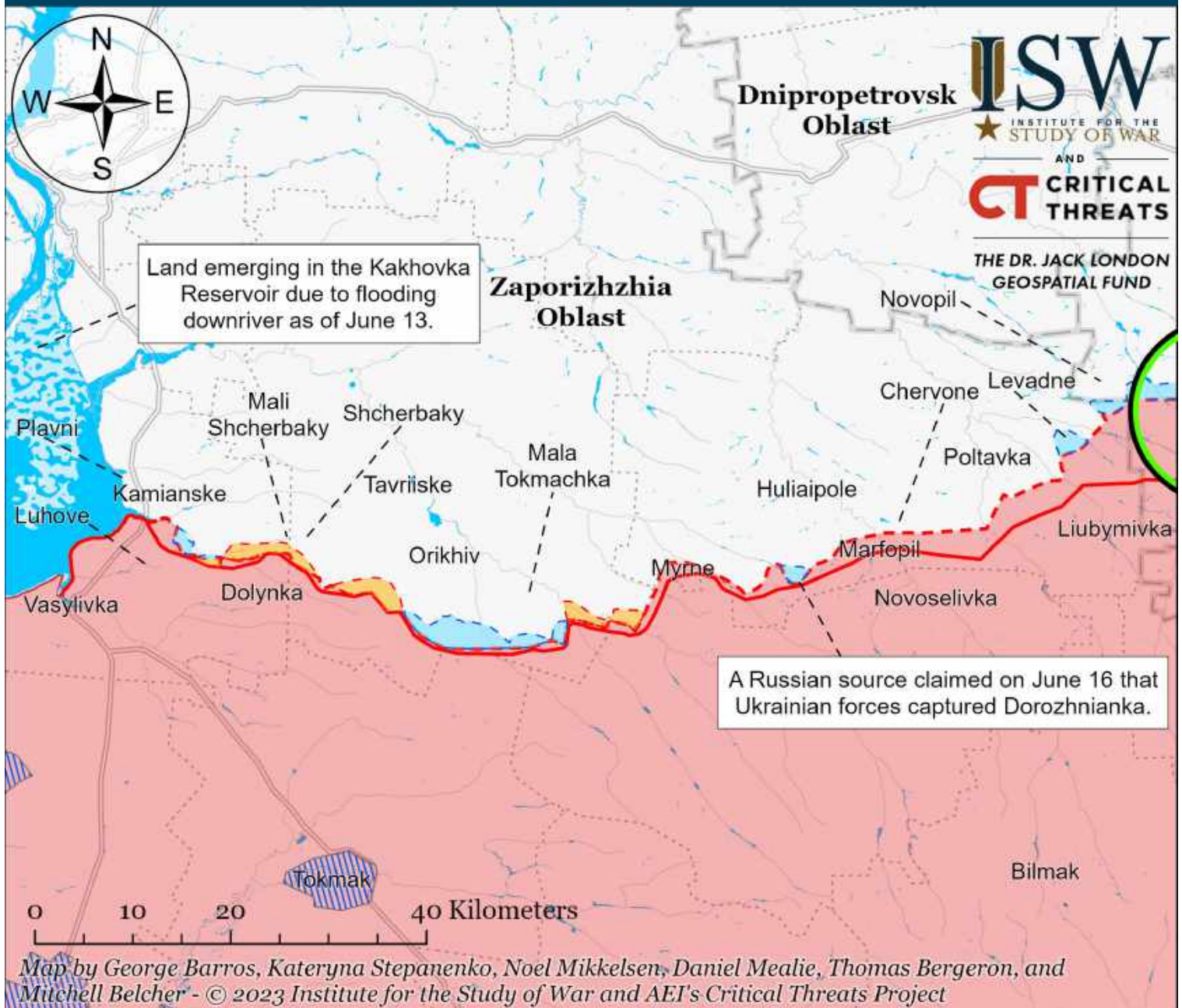
- Bakhmut City Limits
- ▬ Assessed Russian-controlled Ukrainian Territory
- ▬ Claimed Ukrainian Counteroffensives
- ▬ Assessed Russian Advances in Ukraine\*
- ▬ Claimed Russian Control over Ukrainian Territory
- ▬ Reported Ukrainian Partisan Warfare

\* Assessed Russian advances are areas where ISW assesses Russian forces have operated in or launched attacks against but do not control.

Note: Ukrainian Deputy Defense Minister Hanna Malyar reported on June 14 that Ukrainian forces advanced 200 to 500 meters in the Bakhmut direction over the past 24 hours but ISW cannot assess the exact areas of Ukrainian advances at this time.



# Assessed Control of Terrain Around Zaporizhzhia as of June 16, 2023, 3:00 PM ET



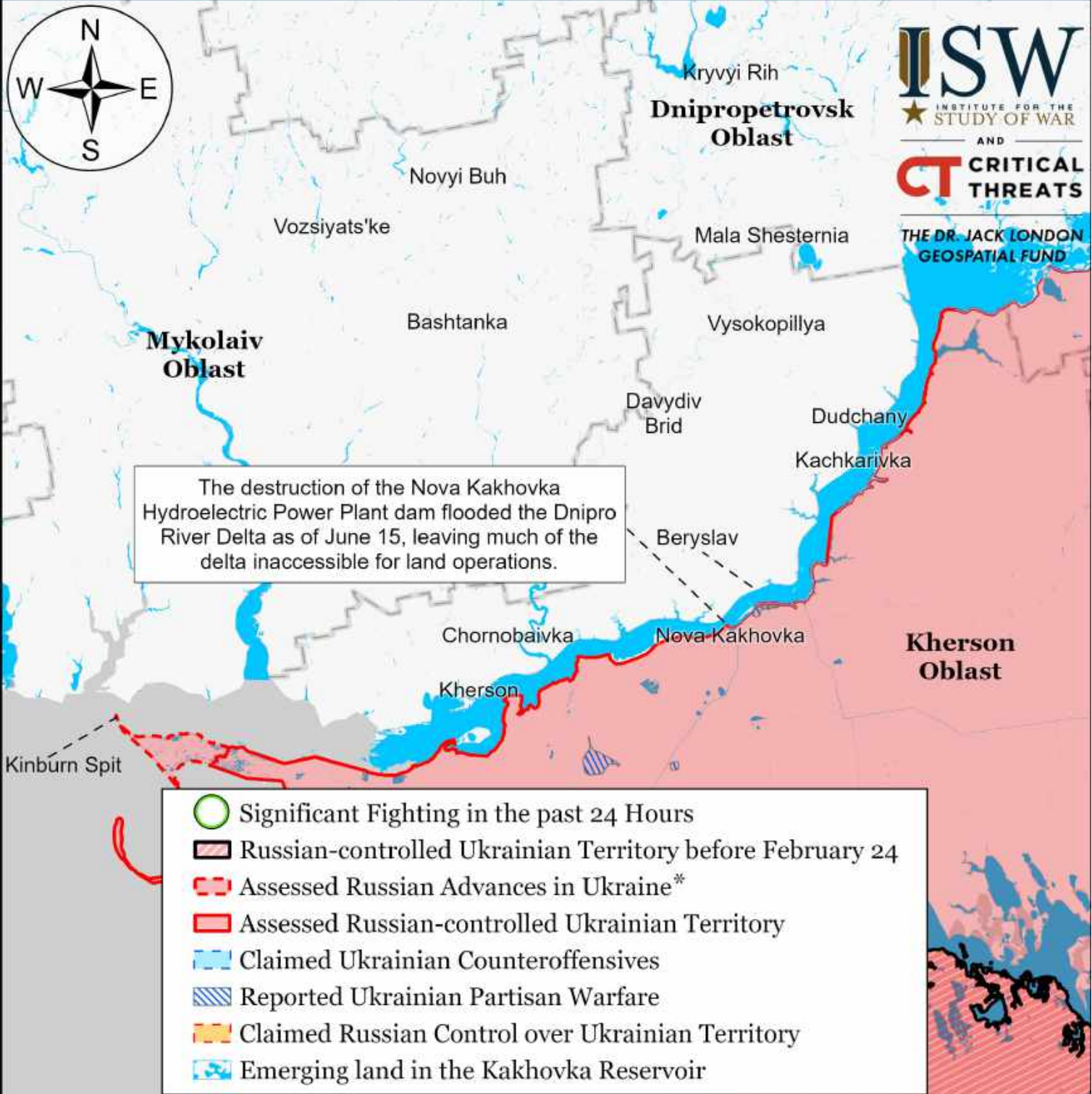
- Significant Fighting in the past 24 Hours
- Assessed Russian-controlled Ukrainian Territory
- Reported Ukrainian Partisan Warfare
- Russian-controlled Ukrainian Territory before February 24
- Claimed Russian Control over Ukrainian Territory
- Emerging land in the Kakhovka Reservoir
- Assessed Russian Advances in Ukraine\*
- Claimed Ukrainian Counteroffensives

\* Assessed Russian advances are areas where ISW assesses Russian forces have operated in or launched attacks against but do not control.

Note: Ukrainian Deputy Defense Minister Hanna Malyar reported on June 14 that Ukrainian forces advanced 300 to 350 meters in the Zaporizhzhia Oblast direction over the past 24 hours but ISW cannot assess the exact areas of Ukrainian advances at this time.



# Assessed Control of Terrain Around Kherson and Mykolaiv as of June 16, 2023, 3:00 PM ET



0 20 40 80 Kilometers

Map by George Barros, Kateryna Stepanenko, Noel Mikkelsen, Daniel Mealie, Thomas Bergeron, and Mitchell Belcher - © 2023 Institute for the Study of War and AEI's Critical Threats Project

\* Assessed Russian advances are areas where ISW assesses Russian forces have operated in or launched attacks against but do not control.



# Assessed Control of Terrain in Ukraine and Main Russian Maneuver Axes as of June 15, 2023, 3:00 PM ET

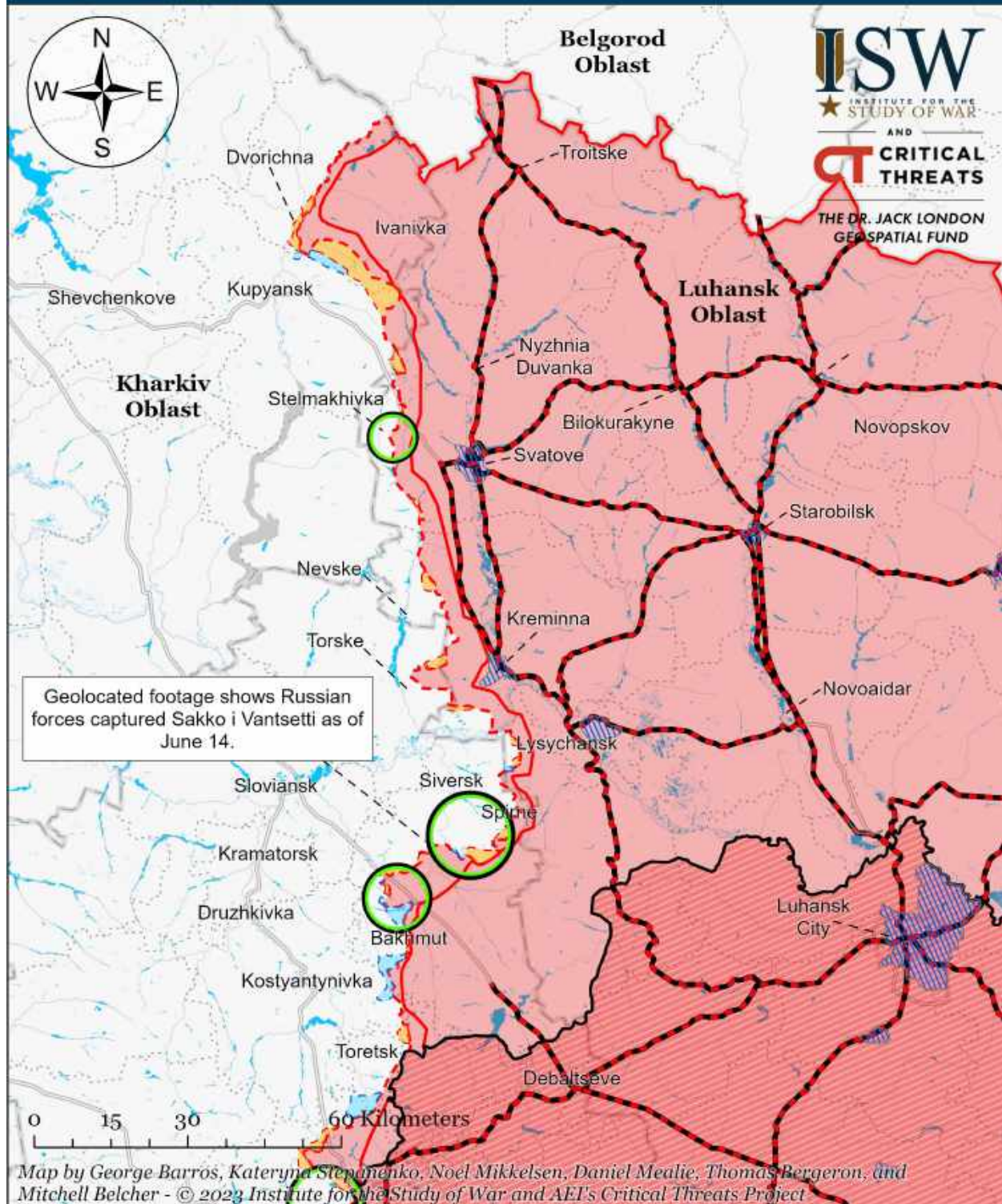


Map by George Barros, Kateryna Stepanenko, Noel Mikkelsen, Daniel Mealie, Thomas Bergeron, and Mitchell Belcher - © 2023 Institute for the Study of War and AEI's Critical Threats Project

\* Assessed Russian advances are areas where ISW assesses Russian forces have operated in or launched attacks against but do not control.



# Assessed Control of Terrain Around Luhansk Oblast as of June 15, 2023, 3:00 PM ET



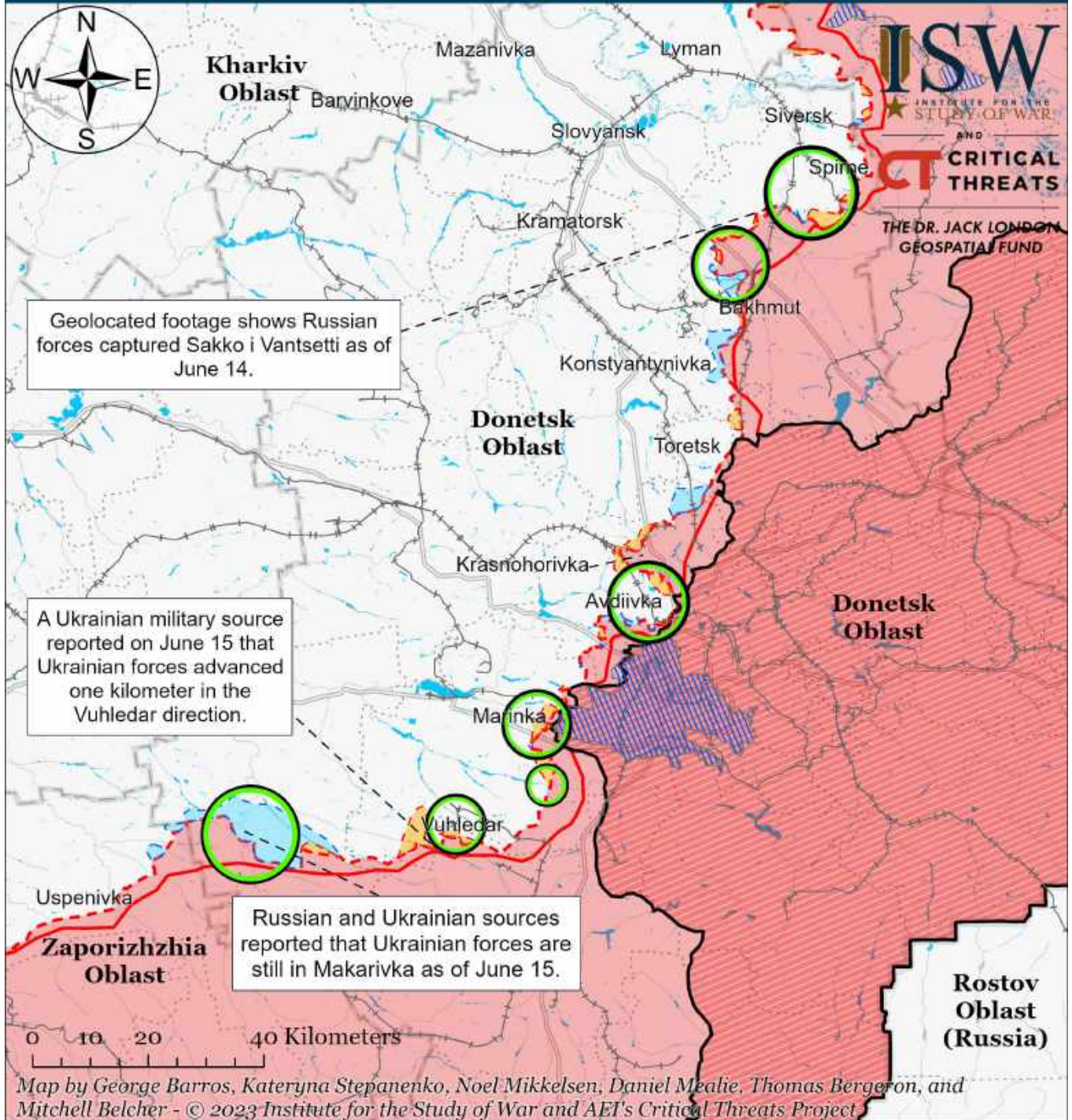
- |   |  |                                     |
|---|--|-------------------------------------|
| Significant Fighting in the past 24 Hours                 | Assessed Russian Advances in Ukraine*            | Claimed Ukrainian Counteroffensives |
| Russian Ground Lines of Communication                     | Assessed Russian-controlled Ukrainian Territory  | Reported Ukrainian Partisan Warfare |
| Russian-controlled Ukrainian Territory before February 24 | Claimed Russian Control over Ukrainian Territory |                                     |

\* Assessed Russian advances are areas where ISW assesses Russian forces have operated in or launched attacks against but do not control.

Note: Ukrainian Deputy Defense Minister Hanna Malyar reported on June 14 that Ukrainian forces advanced 200 to 500 meters in the Bakhmut direction over the past 24 hours but ISW cannot assess the exact areas of Ukrainian advances at this time.



# Assessed Control of Terrain Around Donetsk as of June 15, 2023, 3:00 PM ET



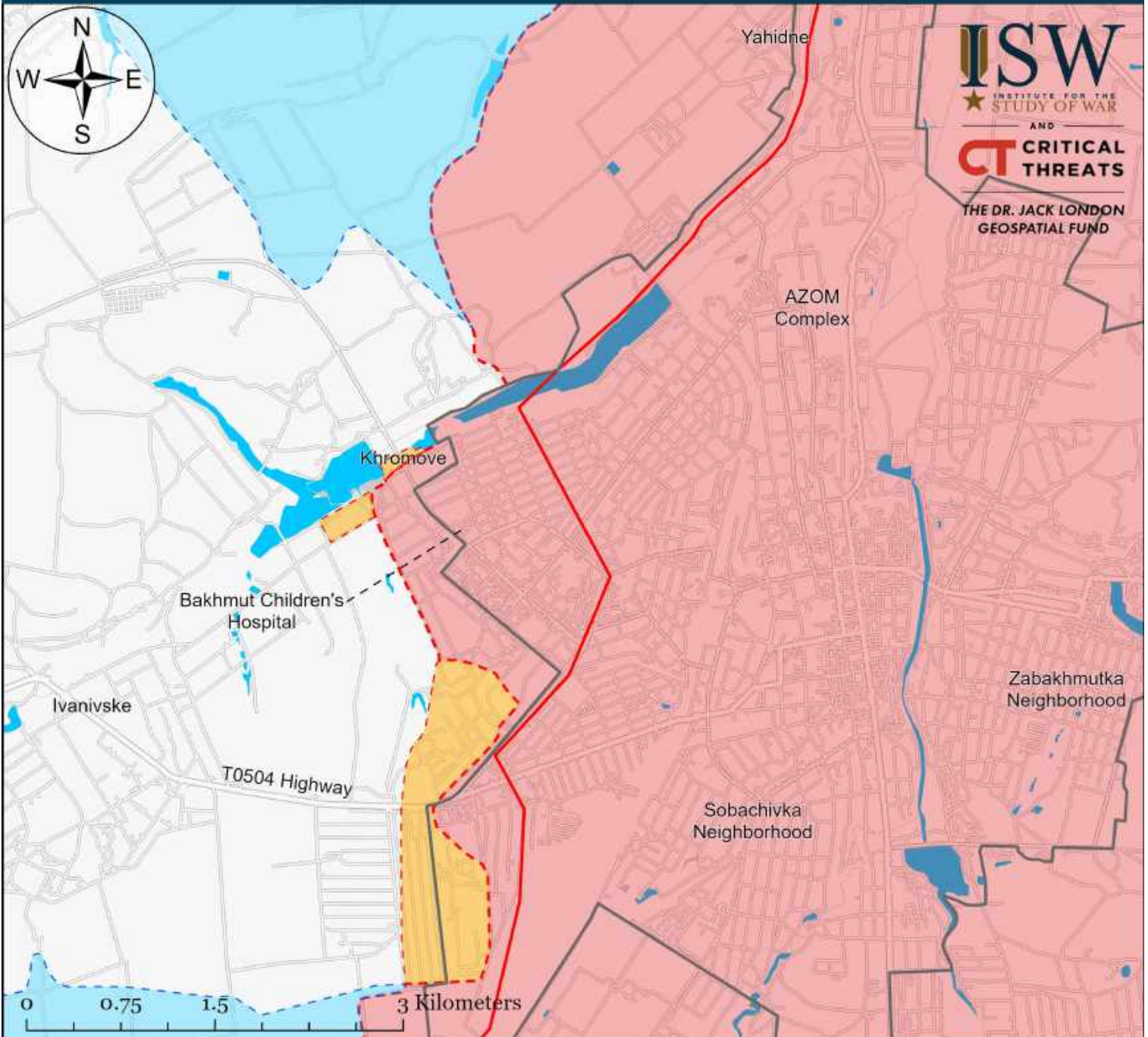
- Significant Fighting in the past 24 Hours
- Assessed Russian-controlled Ukrainian Territory
- Major Railroads
- Russian-controlled Ukrainian Territory before February 24
- Claimed Russian Control over Ukrainian Territory
- Reported Ukrainian Partisan Warfare
- Assessed Russian Advances in Ukraine\*
- Claimed Ukrainian Counteroffensives

\* Assessed Russian advances are areas where ISW assesses Russian forces have operated in or launched attacks against but do not control.

Note: Ukrainian Deputy Defense Minister Hanna Malyar reported on June 14 that Ukrainian forces advanced 200 to 500 meters in the Bakhmut direction over the past 24 hours but ISW cannot assess the exact areas of Ukrainian advances at this time.



# Assessed Control of Terrain in Bakhmut as of June 15, 2023, 3:00 PM ET



**ISW**  
INSTITUTE FOR THE  
STUDY OF WAR  
AND  
**CT** CRITICAL  
THREATS  
THE DR. JACK LONDON  
GEOSPATIAL FUND

Map by George Barros, Kateryna Stepanenko, Noel Mikkelsen, Daniel Mealie, Thomas Bergeron, and Mitchell Belcher  
© 2023 Institute for the Study of War and AEI's Critical Threats Project

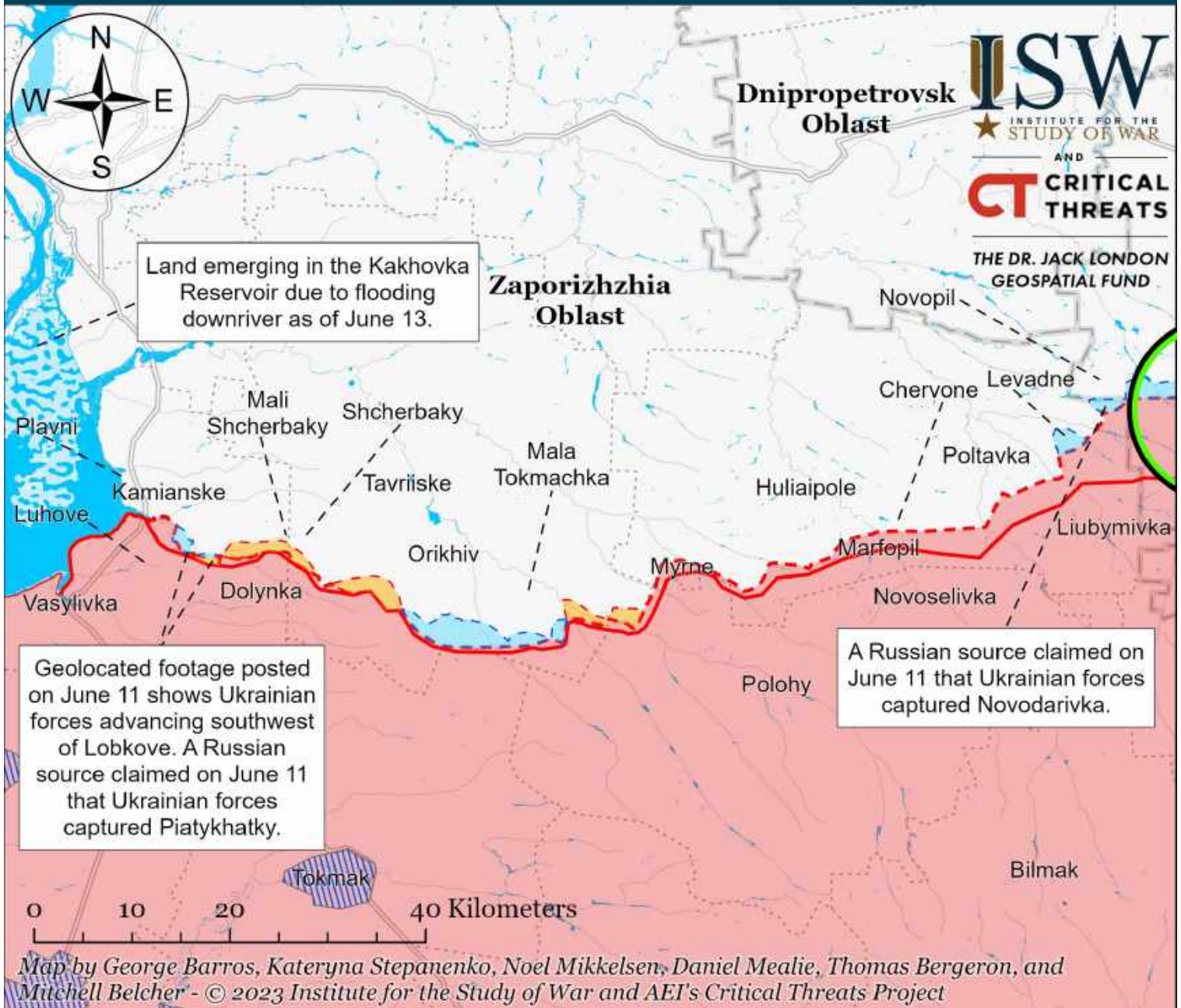
- |                                       |  |                                     |
|---------------------------------------|--|-------------------------------------|
| Bakhmut City Limits                   | Assessed Russian-controlled Ukrainian Territory  | Claimed Ukrainian Counteroffensives |
| Assessed Russian Advances in Ukraine* | Claimed Russian Control over Ukrainian Territory | Reported Ukrainian Partisan Warfare |

\* Assessed Russian advances are areas where ISW assesses Russian forces have operated in or launched attacks against but do not control.

Note: Ukrainian Deputy Defense Minister Hanna Malyar reported on June 14 that Ukrainian forces advanced 200 to 500 meters in the Bakhmut direction over the past 24 hours but ISW cannot assess the exact areas of Ukrainian advances at this time.



# Assessed Control of Terrain Around Zaporizhzhia as of June 15, 2023, 3:00 PM ET



- Significant Fighting in the past 24 Hours
- Assessed Russian-controlled Ukrainian Territory
- Reported Ukrainian Partisan Warfare
- Russian-controlled Ukrainian Territory before February 24
- Claimed Russian Control over Ukrainian Territory
- Emerging land in the Kakhovka Reservoir
- Assessed Russian Advances in Ukraine\*
- Claimed Ukrainian Counteroffensives

\* Assessed Russian advances are areas where ISW assesses Russian forces have operated in or launched attacks against but do not control.

Note: Ukrainian Deputy Defense Minister Hanna Malyar reported on June 14 that Ukrainian forces advanced 300 to 350 meters in the Zaporizhzhia Oblast direction over the past 24 hours but ISW cannot assess the exact areas of Ukrainian advances at this time.



# Assessed Control of Terrain Around Kherson and Mykolaiv as of June 15, 2023, 3:00 PM ET



Map by George Barros, Kateryna Stepanenko, Noel Mikkelsen, Daniel Mealie, Thomas Bergeron, and Mitchell Belcher - © 2023 Institute for the Study of War and AEI's Critical Threats Project

\* Assessed Russian advances are areas where ISW assesses Russian forces have operated in or launched attacks against but do not control.



# Assessed Control of Terrain in Ukraine and Main Russian Maneuver Axes as of June 14, 2023, 3:00 PM ET

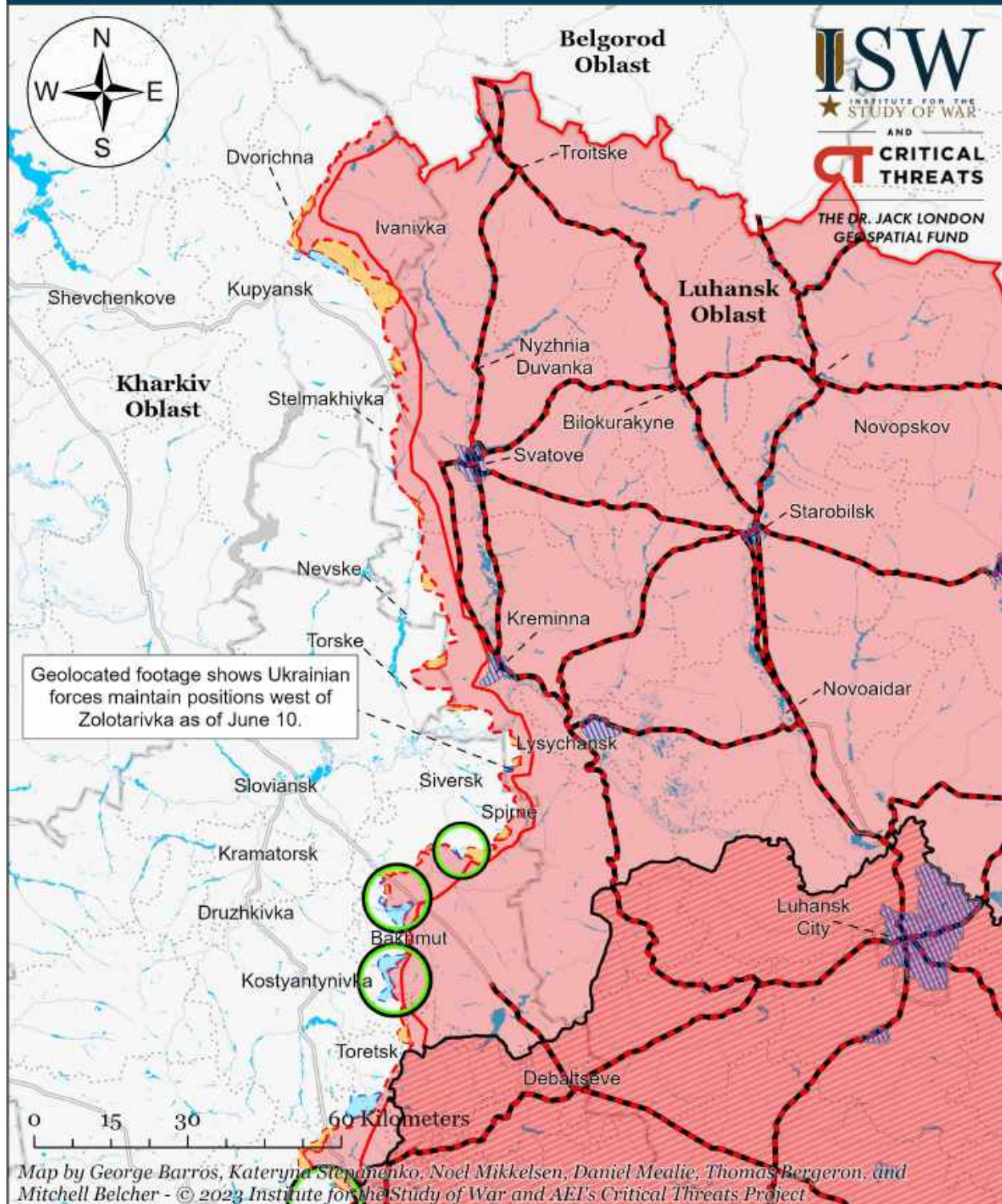


Map by George Barros, Kateryna Stepanenko, Noel Mikkelsen, Daniel Mealie, Thomas Bergeron, and Mitchell Belcher - © 2023 Institute for the Study of War and AEI's Critical Threats Project

\* Assessed Russian advances are areas where ISW assesses Russian forces have operated in or launched attacks against but do not control.



# Assessed Control of Terrain Around Luhansk Oblast as of June 14, 2023, 3:00 PM ET



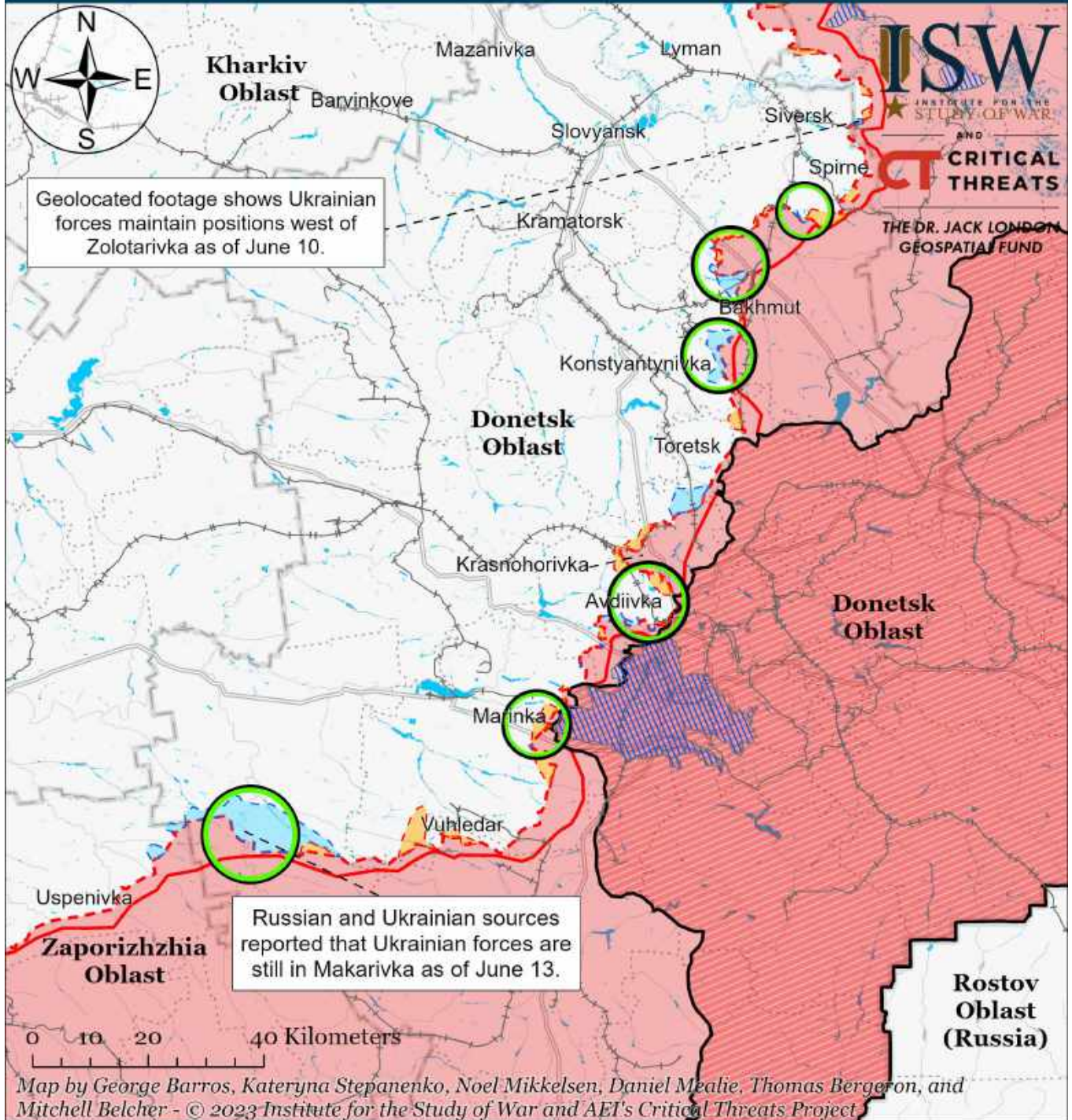
- Significant Fighting in the past 24 Hours
- Assessed Russian Advances in Ukraine\*
- Claimed Ukrainian Counteroffensives
- Russian Ground Lines of Communication
- Assessed Russian-controlled Ukrainian Territory
- Russian-controlled Ukrainian Territory before February 24
- Claimed Russian Control over Ukrainian Territory
- Reported Ukrainian Partisan Warfare

\* Assessed Russian advances are areas where ISW assesses Russian forces have operated in or launched attacks against but do not control.

Note: Ukrainian Deputy Defense Minister Hanna Malyar reported on June 14 that Ukrainian forces advanced 200 to 500 meters in the Bakhmut direction over the past 24 hours but ISW cannot assess the exact areas of Ukrainian advances at this time.



# Assessed Control of Terrain Around Donetsk as of June 14, 2023, 3:00 PM ET



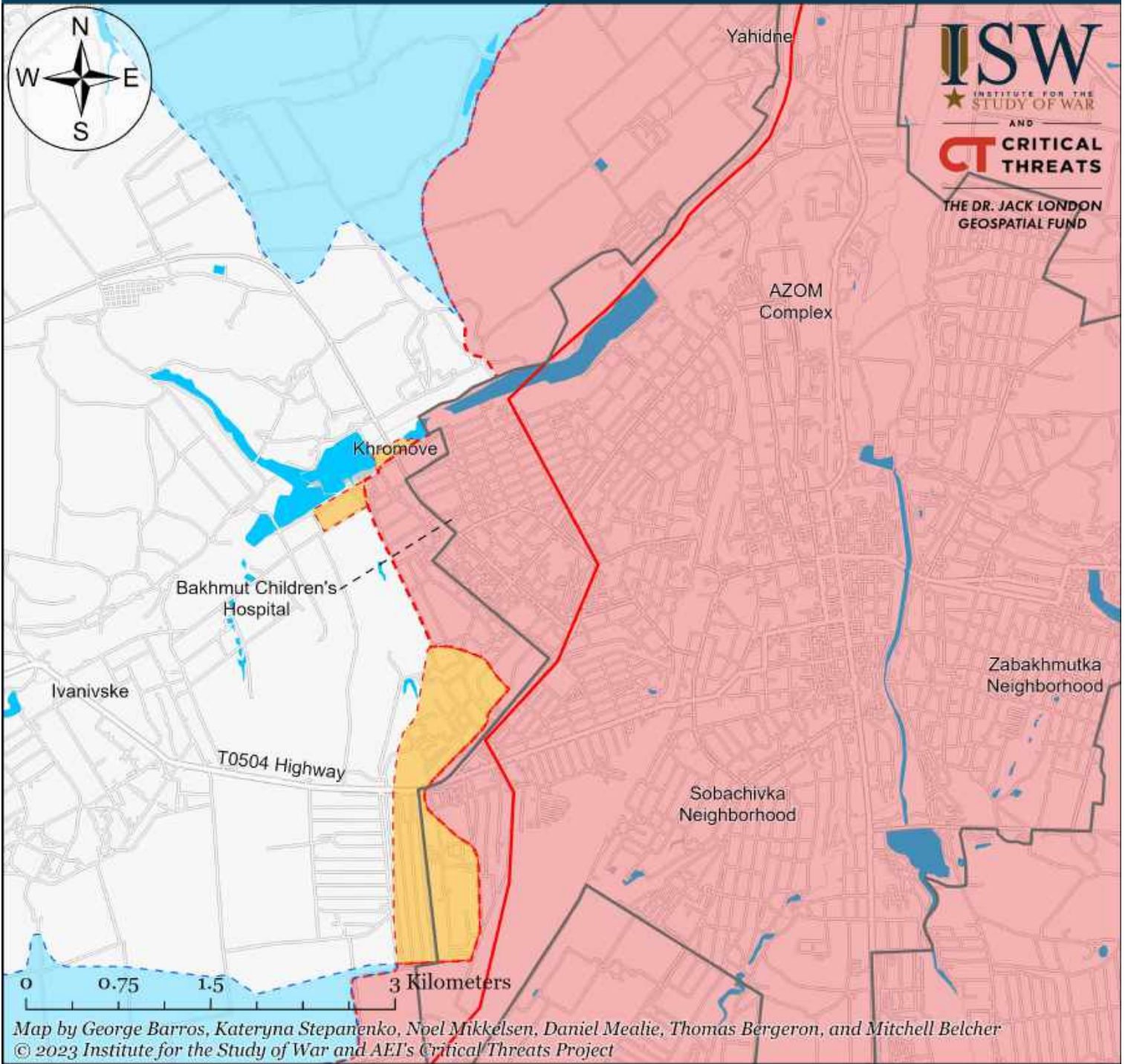
- Significant Fighting in the past 24 Hours
- Assessed Russian-controlled Ukrainian Territory
- Russian-controlled Ukrainian Territory before February 24
- Assessed Russian Advances in Ukraine\*
- Claimed Russian Control over Ukrainian Territory
- Claimed Ukrainian Counteroffensives
- Major Railroads
- Reported Ukrainian Partisan Warfare

\* Assessed Russian advances are areas where ISW assesses Russian forces have operated in or launched attacks against but do not control.

Note: Ukrainian Deputy Defense Minister Hanna Malyar reported on June 14 that Ukrainian forces advanced 200 to 500 meters in the Bakhmut direction over the past 24 hours but ISW cannot assess the exact areas of Ukrainian advances at this time.



# Assessed Control of Terrain in Bakhmut as of June 14, 2023, 3:00 PM ET



**ISW**  
 INSTITUTE FOR THE  
 STUDY OF WAR  
 AND  
**CT** CRITICAL  
 THREATS  
 THE DR. JACK LONDON  
 GEOSPATIAL FUND

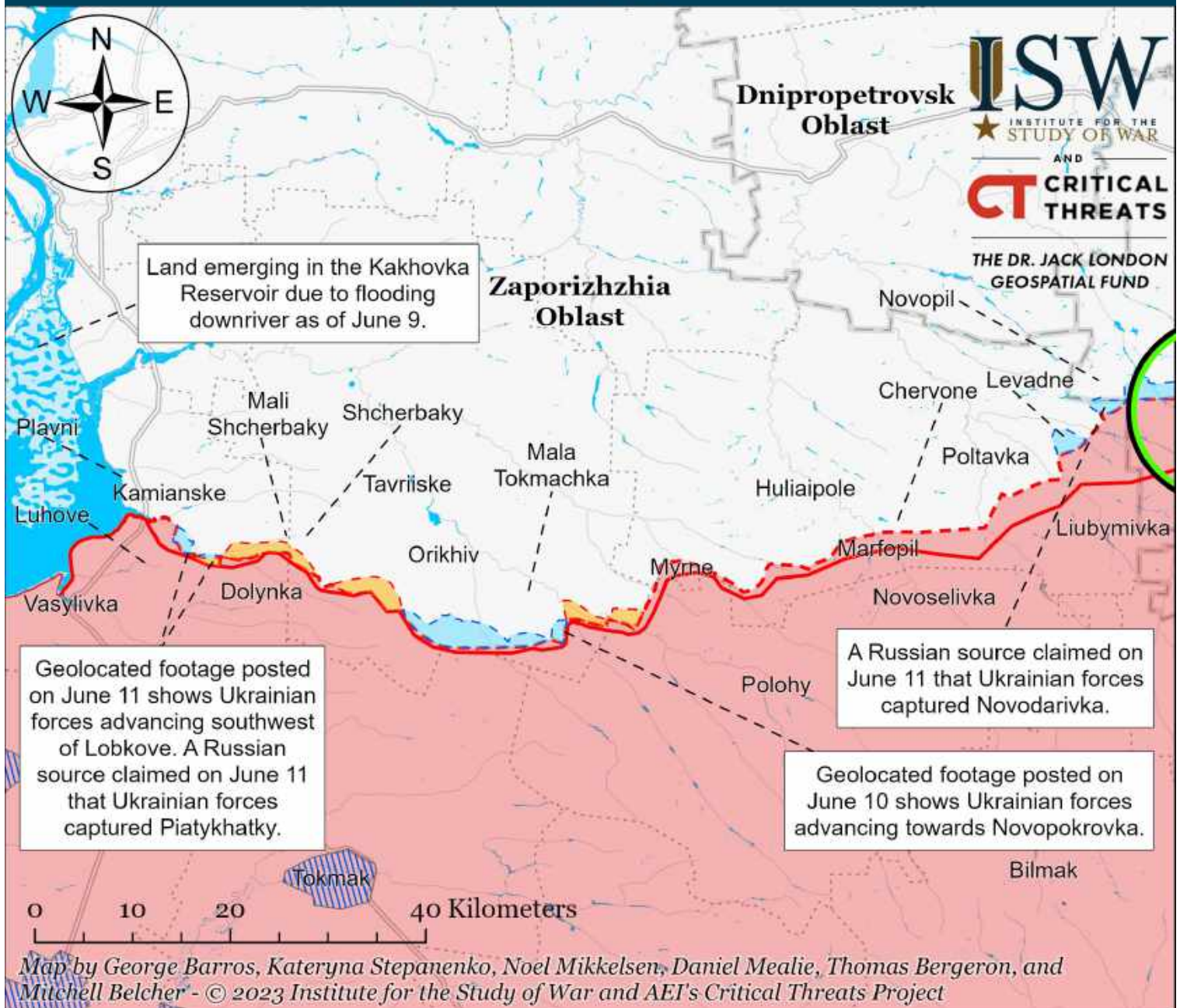
- Bakhmut City Limits
- ▬ Assessed Russian Advances in Ukraine\*
- ▬ Assessed Russian-controlled Ukrainian Territory
- ▬ Claimed Russian Control over Ukrainian Territory
- ▬ Claimed Ukrainian Counteroffensives
- ▬ Reported Ukrainian Partisan Warfare

\* Assessed Russian advances are areas where ISW assesses Russian forces have operated in or launched attacks against but do not control.

Note: Ukrainian Deputy Defense Minister Hanna Malyar reported on June 14 that Ukrainian forces advanced 200 to 500 meters in the Bakhmut direction over the past 24 hours but ISW cannot assess the exact areas of Ukrainian advances at this time.



# Assessed Control of Terrain Around Zaporizhzhia as of June 14, 2023, 3:00 PM ET



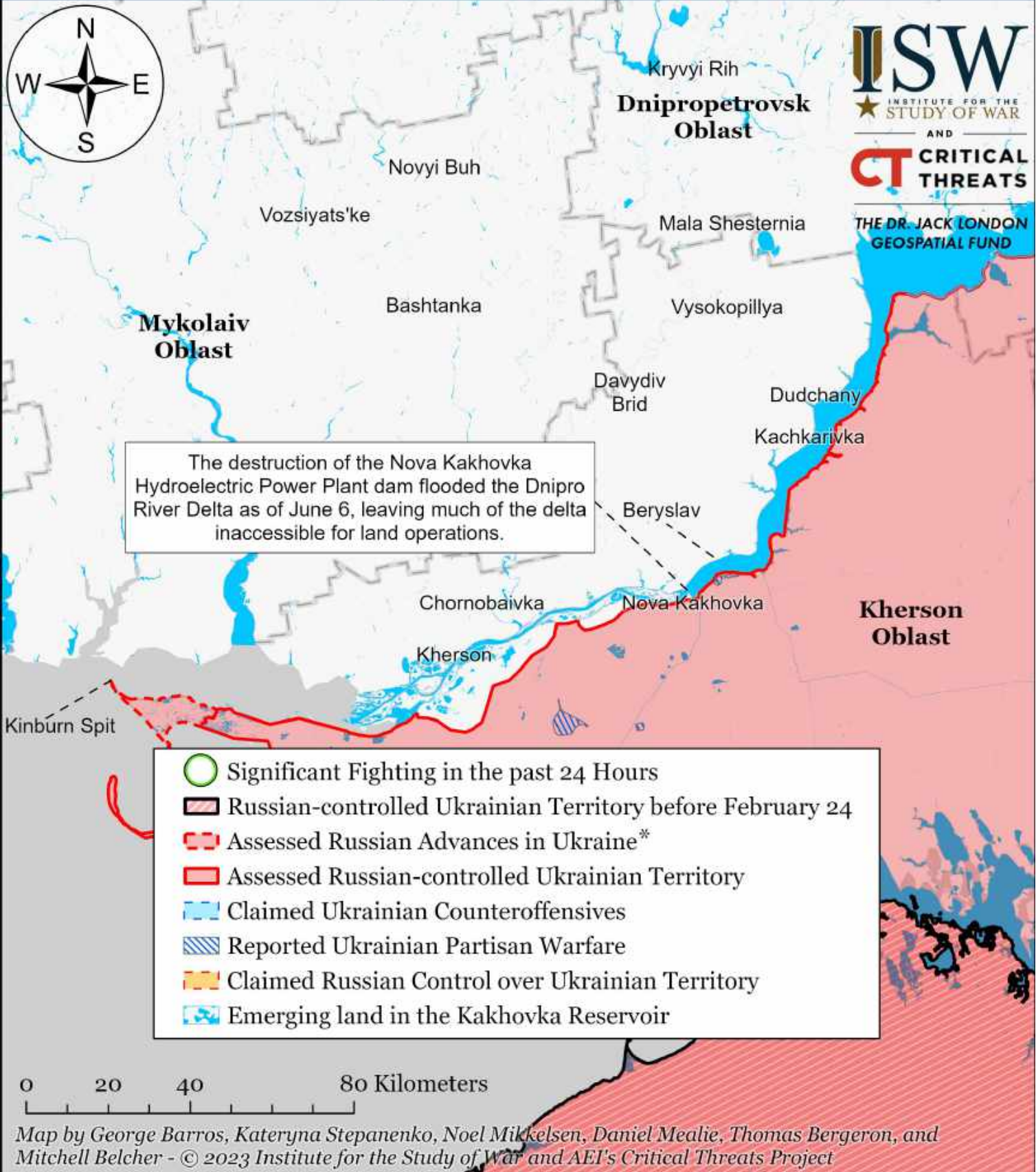
- Significant Fighting in the past 24 Hours
- Assessed Russian-controlled Ukrainian Territory
- Reported Ukrainian Partisan Warfare
- Russian-controlled Ukrainian Territory before February 24
- Claimed Russian Control over Ukrainian Territory
- Emerging land in the Kakhovka Reservoir
- Assessed Russian Advances in Ukraine\*
- Claimed Ukrainian Counteroffensives

\* Assessed Russian advances are areas where ISW assesses Russian forces have operated in or launched attacks against but do not control.

Note: Ukrainian Deputy Defense Minister Hanna Malyar reported on June 14 that Ukrainian forces advanced 300 to 350 meters in the Zaporizhzhia Oblast direction over the past 24 hours but ISW cannot assess the exact areas of Ukrainian advances at this time.



# Assessed Control of Terrain Around Kherson and Mykolaiv as of June 14, 2023, 3:00 PM ET



Map by George Barros, Kateryna Stepanenko, Noel Mikkelsen, Daniel Mealie, Thomas Bergeron, and Mitchell Belcher - © 2023 Institute for the Study of War and AEI's Critical Threats Project

\* Assessed Russian advances are areas where ISW assesses Russian forces have operated in or launched attacks against but do not control.



# Assessed Control of Terrain in Ukraine and Main Russian Maneuver Axes as of June 13, 2023, 3:00 PM ET

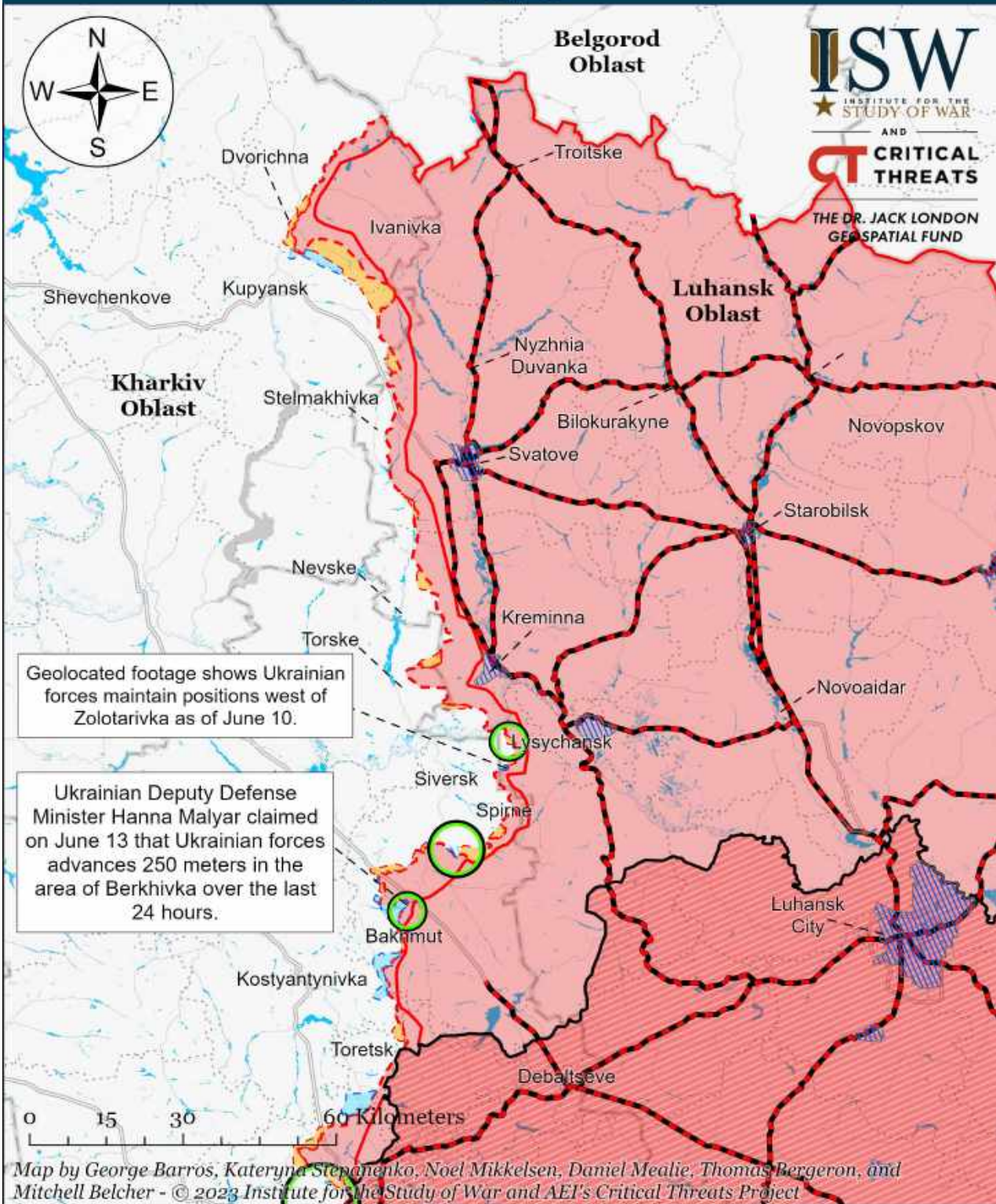


Map by George Barros, Kateryna Stepanenko, Noel Mikkelsen, Daniel Mealie, Thomas Bergeron, and Mitchell Belcher - © 2023 Institute for the Study of War and AEI's Critical Threats Project

\* Assessed Russian advances are areas where ISW assesses Russian forces have operated in or launched attacks against but do not control.



# Assessed Control of Terrain Around Luhansk Oblast as of June 13, 2023, 3:00 PM ET



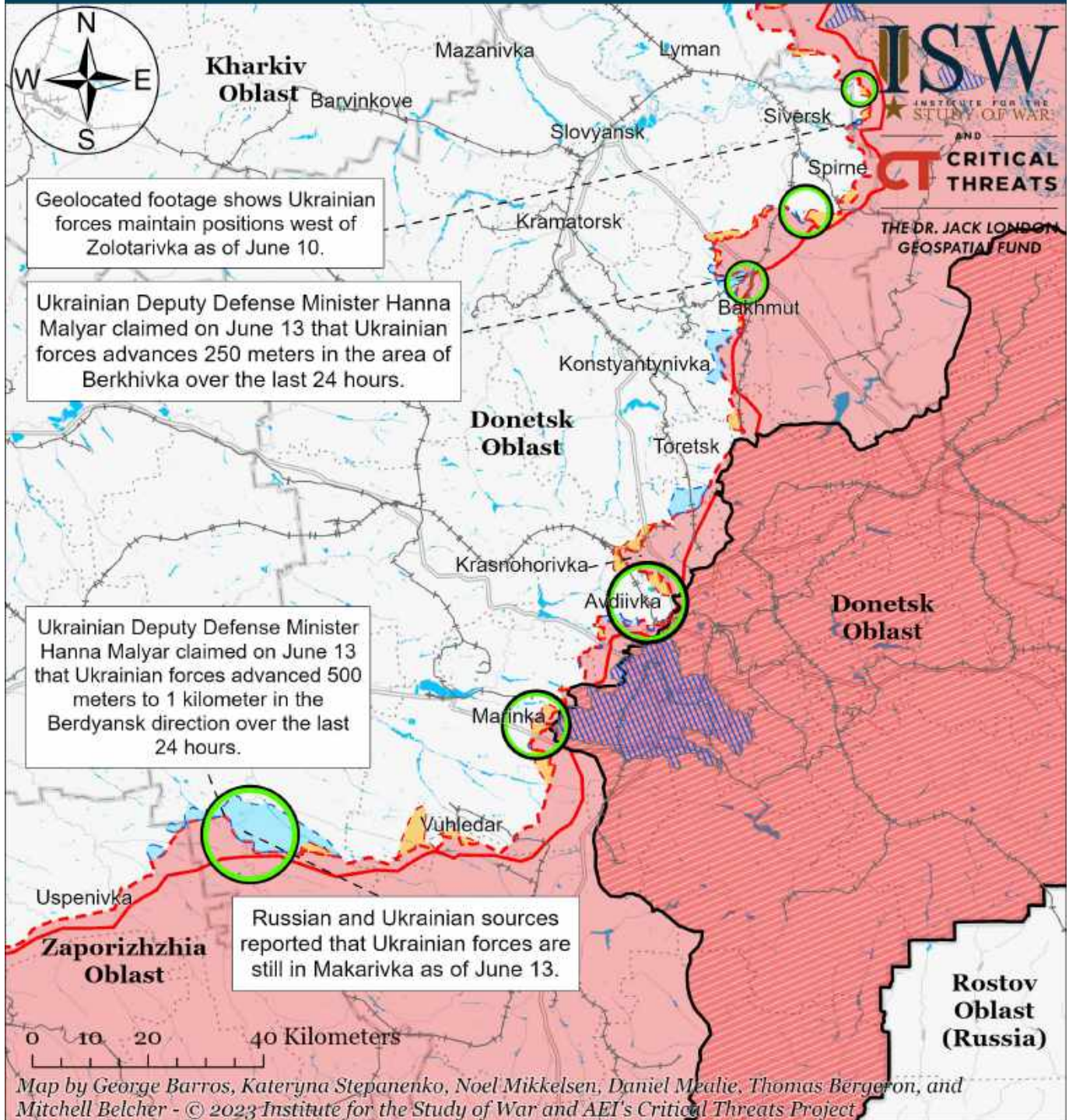
- |   |  |                                     |
|---|--|-------------------------------------|
| Significant Fighting in the past 24 Hours                 | Assessed Russian Advances in Ukraine*            | Claimed Ukrainian Counteroffensives |
| Russian Ground Lines of Communication                     | Assessed Russian-controlled Ukrainian Territory  | Reported Ukrainian Partisan Warfare |
| Russian-controlled Ukrainian Territory before February 24 | Claimed Russian Control over Ukrainian Territory |                                     |

\* Assessed Russian advances are areas where ISW assesses Russian forces have operated in or launched attacks against but do not control.

Note: Ukrainian military officials reported on June 13 that Ukrainian forces advanced in the Berkhivka and Toretsk areas but ISW cannot assess the exact areas of Ukrainian advances at this time.



# Assessed Control of Terrain Around Donetsk as of June 13, 2023, 3:00 PM ET



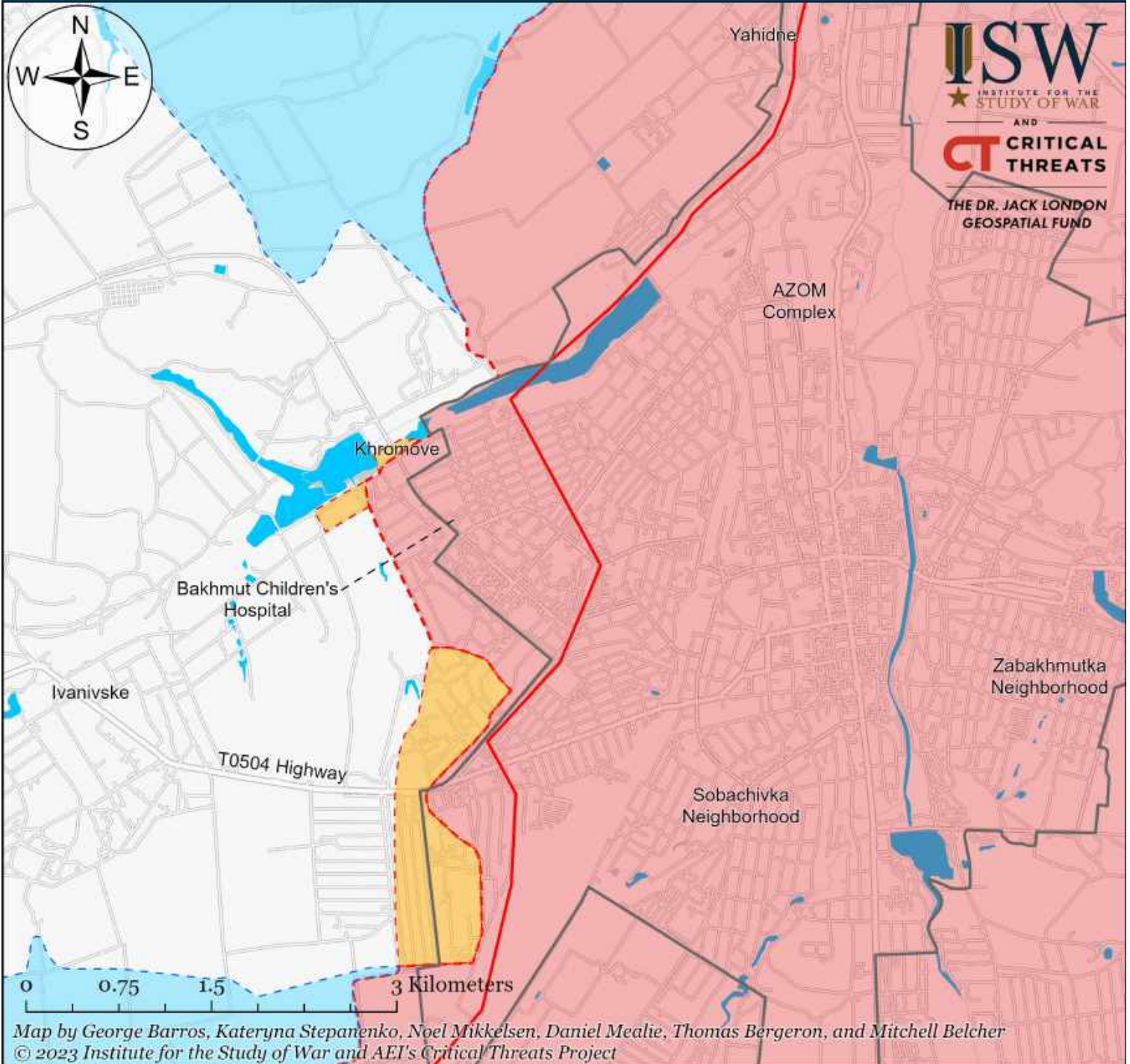
- Significant Fighting in the past 24 Hours
- Assessed Russian-controlled Ukrainian Territory
- Russian-controlled Ukrainian Territory before February 24
- Assessed Russian Advances in Ukraine\*
- Claimed Russian Control over Ukrainian Territory
- Claimed Ukrainian Counteroffensives
- +— Major Railroads
- Reported Ukrainian Partisan Warfare

\* Assessed Russian advances are areas where ISW assesses Russian forces have operated in or launched attacks against but do not control.

Note: Ukrainian military officials reported on June 13 that Ukrainian forces advanced in the Berkhivka and Toretsk areas but ISW cannot assess the exact areas of Ukrainian advances at this time.



# Assessed Control of Terrain in Bakhmut as of June 13, 2023, 3:00 PM ET



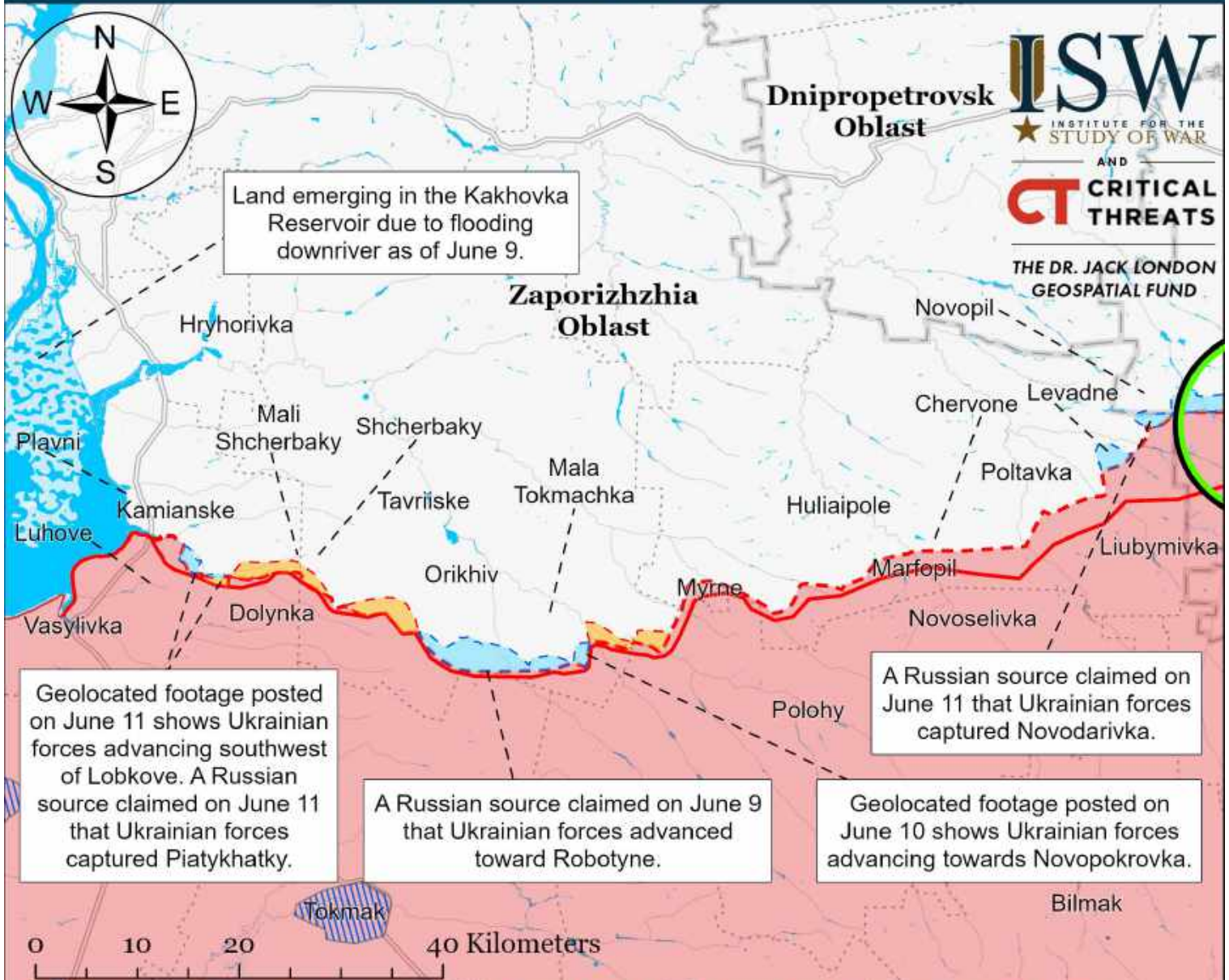
Map by George Barros, Kateryna Stepanenko, Noel Mikkelsen, Daniel Mealie, Thomas Bergeron, and Mitchell Belcher  
 © 2023 Institute for the Study of War and AEI's Critical Threats Project

- |                                       |  |                                     |
|---------------------------------------|--|-------------------------------------|
| Bakhmut City Limits                   | Assessed Russian-controlled Ukrainian Territory  | Claimed Ukrainian Counteroffensives |
| Assessed Russian Advances in Ukraine* | Claimed Russian Control over Ukrainian Territory | Reported Ukrainian Partisan Warfare |

\* Assessed Russian advances are areas where ISW assesses Russian forces have operated in or launched attacks against but do not control.



# Assessed Control of Terrain Around Zaporizhzhia as of June 13, 2023, 3:00 PM ET



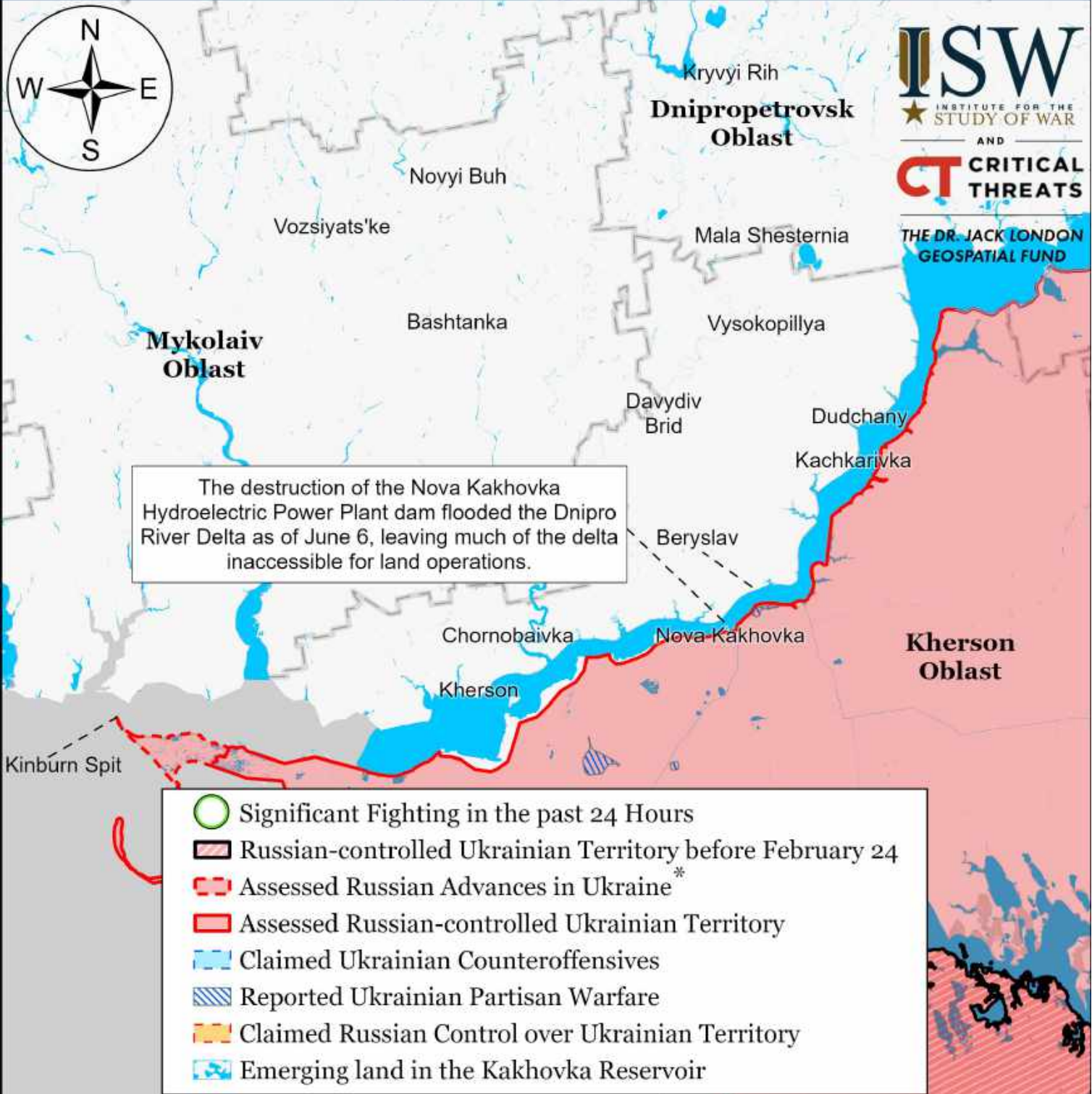
Map by George Barros, Kateryna Stepanenko, Noel Mikkelsen, Daniel Mealie, Thomas Bergeron, and Mitchell Belcher - © 2023 Institute for the Study of War and AEI's Critical Threats Project

- Significant Fighting in the past 24 Hours
- Assessed Russian-controlled Ukrainian Territory
- Reported Ukrainian Partisan Warfare
- Russian-controlled Ukrainian Territory before February 24
- Claimed Russian Control over Ukrainian Territory
- Emerging land in the Kakhovka Reservoir
- Assessed Russian Advances in Ukraine\*
- Claimed Ukrainian Counteroffensives

\* Assessed Russian advances are areas where ISW assesses Russian forces have operated in or launched attacks against but do not control.



# Assessed Control of Terrain Around Kherson and Mykolaiv as of June 13, 2023, 3:00 PM ET



0 20 40 80 Kilometers

Map by George Barros, Kateryna Stepanenko, Noel Mikkelsen, Daniel Mealie, Thomas Bergeron, and Mitchell Belcher - © 2023 Institute for the Study of War and AEI's Critical Threats Project

\* Assessed Russian advances are areas where ISW assesses Russian forces have operated in or launched attacks against but do not control.