

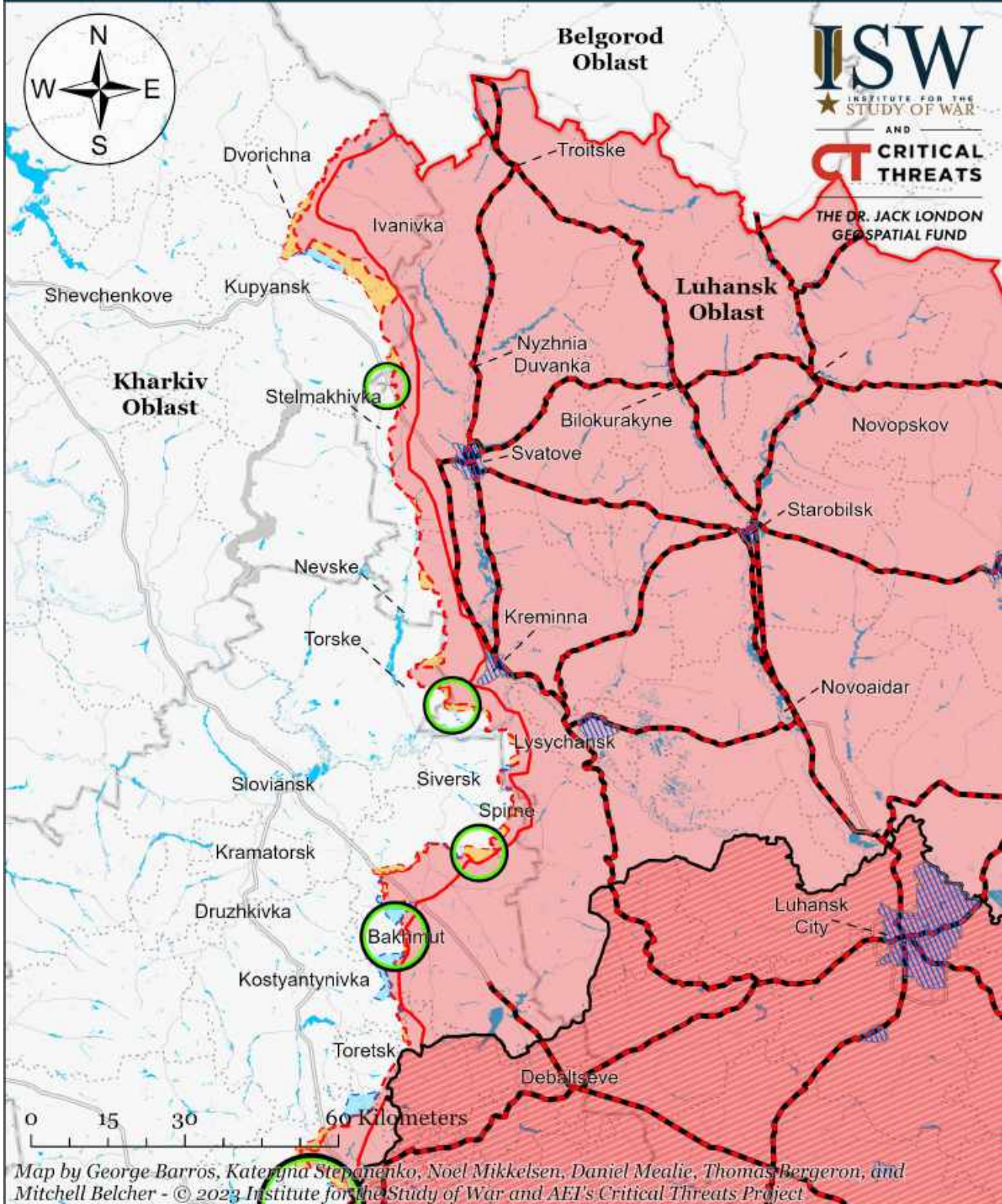
Assessed Control of Terrain in Ukraine and Main Russian Maneuver Axes as of June 24, 2023, 3:00 PM ET



Map by George Barros, Kateryna Stepanenko, Noel Mikkelsen, Daniel Mealie, Thomas Bergeron, and Mitchell Belcher - © 2023 Institute for the Study of War and AEI's Critical Threats Project

* Assessed Russian advances are areas where ISW assesses Russian forces have operated in or launched attacks against but do not control.

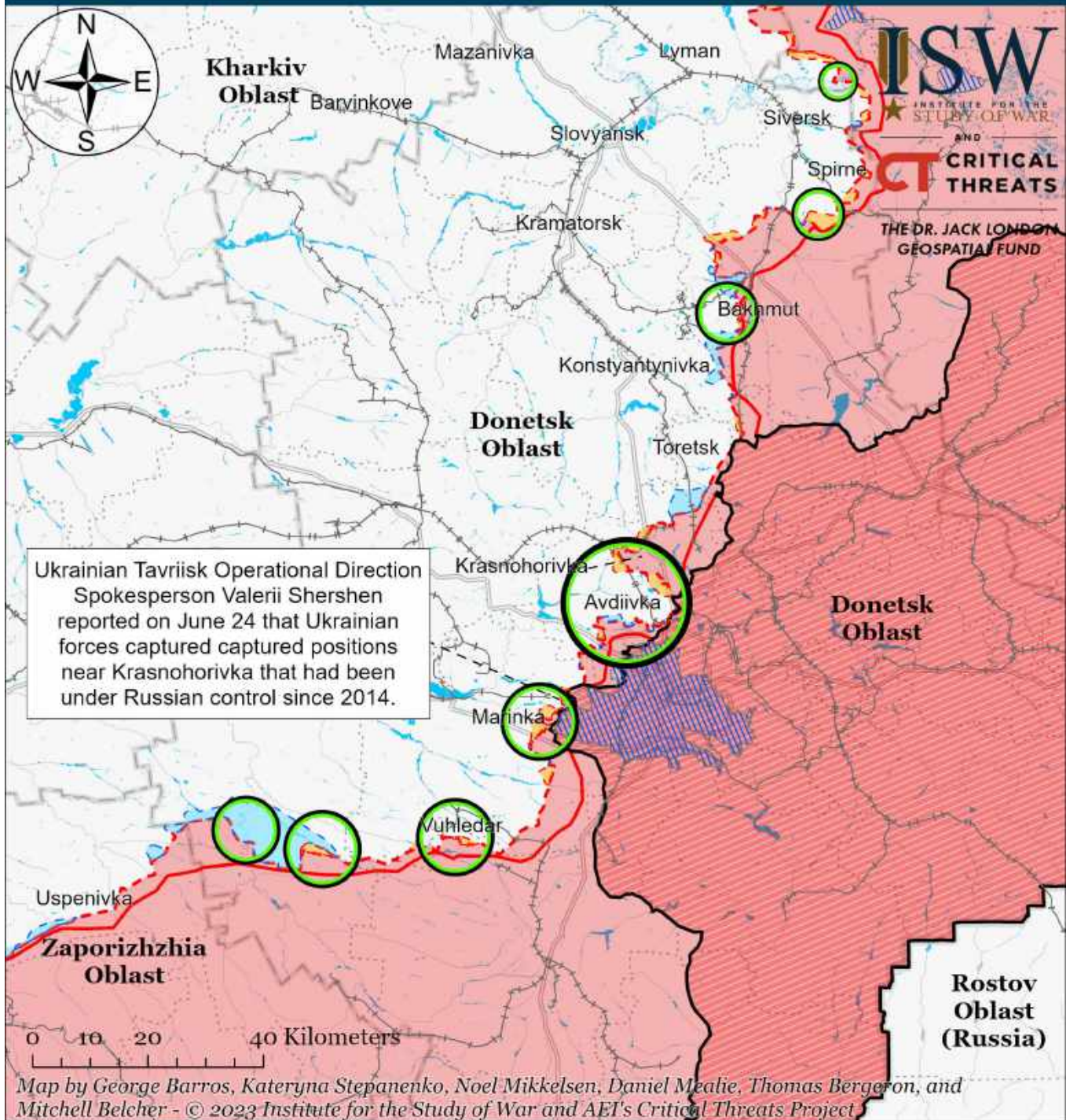
Assessed Control of Terrain Around Luhansk Oblast as of June 24, 2023, 3:00 PM ET



- Significant Fighting in the past 24 Hours
- Assessed Russian Advances in Ukraine*
- Claimed Ukrainian Counteroffensives
- Russian Ground Lines of Communication
- Assessed Russian-controlled Ukrainian Territory
- Reported Ukrainian Partisan Warfare
- Russian-controlled Ukrainian Territory before February 24
- Claimed Russian Control over Ukrainian Territory

* Assessed Russian advances are areas where ISW assesses Russian forces have operated in or launched attacks against but do not control.

Assessed Control of Terrain Around Donetsk as of June 24, 2023, 3:00 PM ET

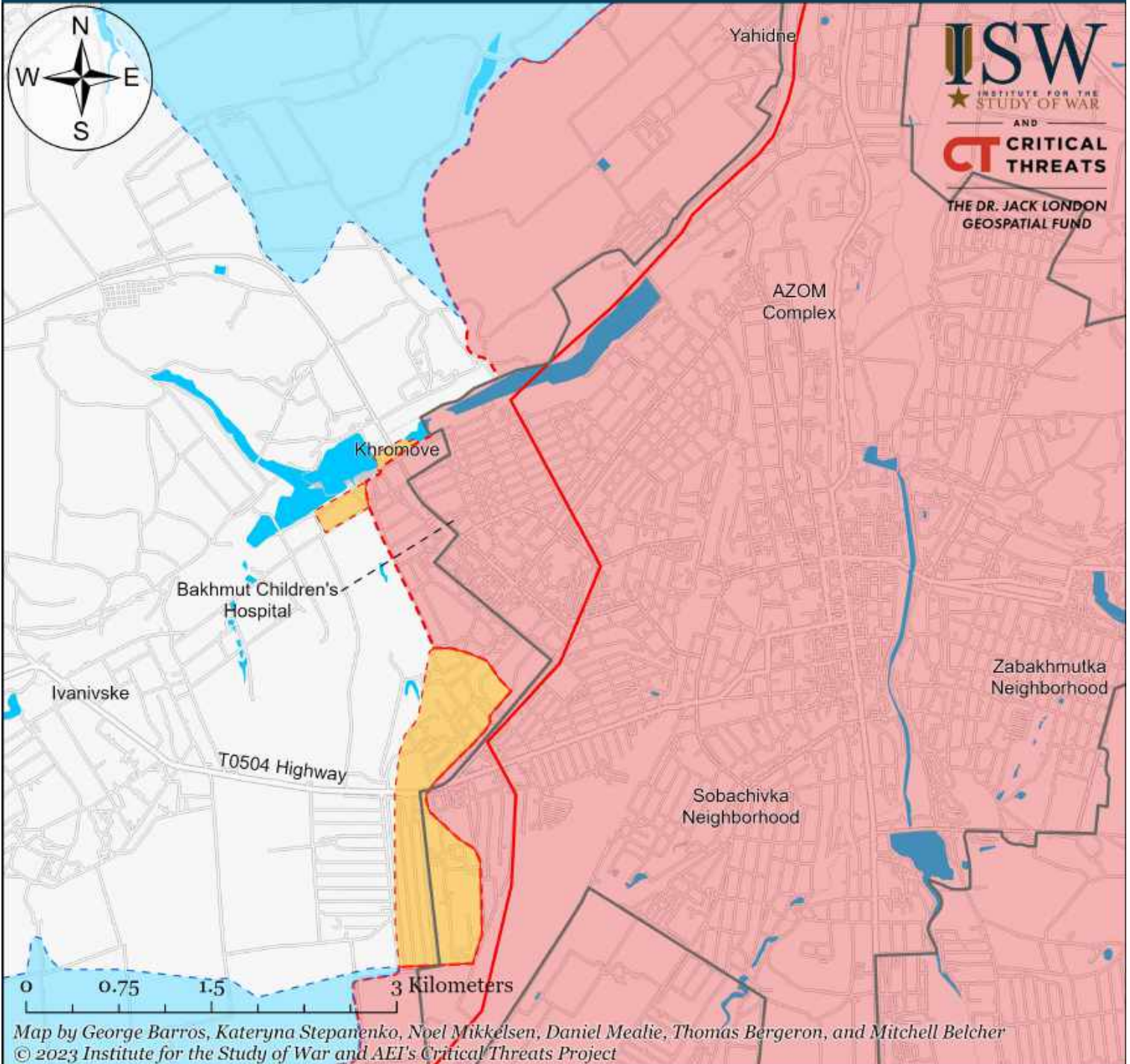


- Significant Fighting in the past 24 Hours
- Assessed Russian-controlled Ukrainian Territory
- Russian-controlled Ukrainian Territory before February 24
- Claimed Russian Control over Ukrainian Territory
- Assessed Russian Advances in Ukraine*
- Claimed Ukrainian Counteroffensives
- Major Railroads
- Reported Ukrainian Partisan Warfare

* Assessed Russian advances are areas where ISW assesses Russian forces have operated in or launched attacks against but do not control.

Note: Ukrainian Tavriisk Operational Direction Spokesperson Valerii Shershen reported on June 24 that Ukrainian forces captured positions near Krasnohorivka that had been under Russian control since 2014. ISW cannot assess the exact areas of advances at this time due to a lack of sufficient evidence.

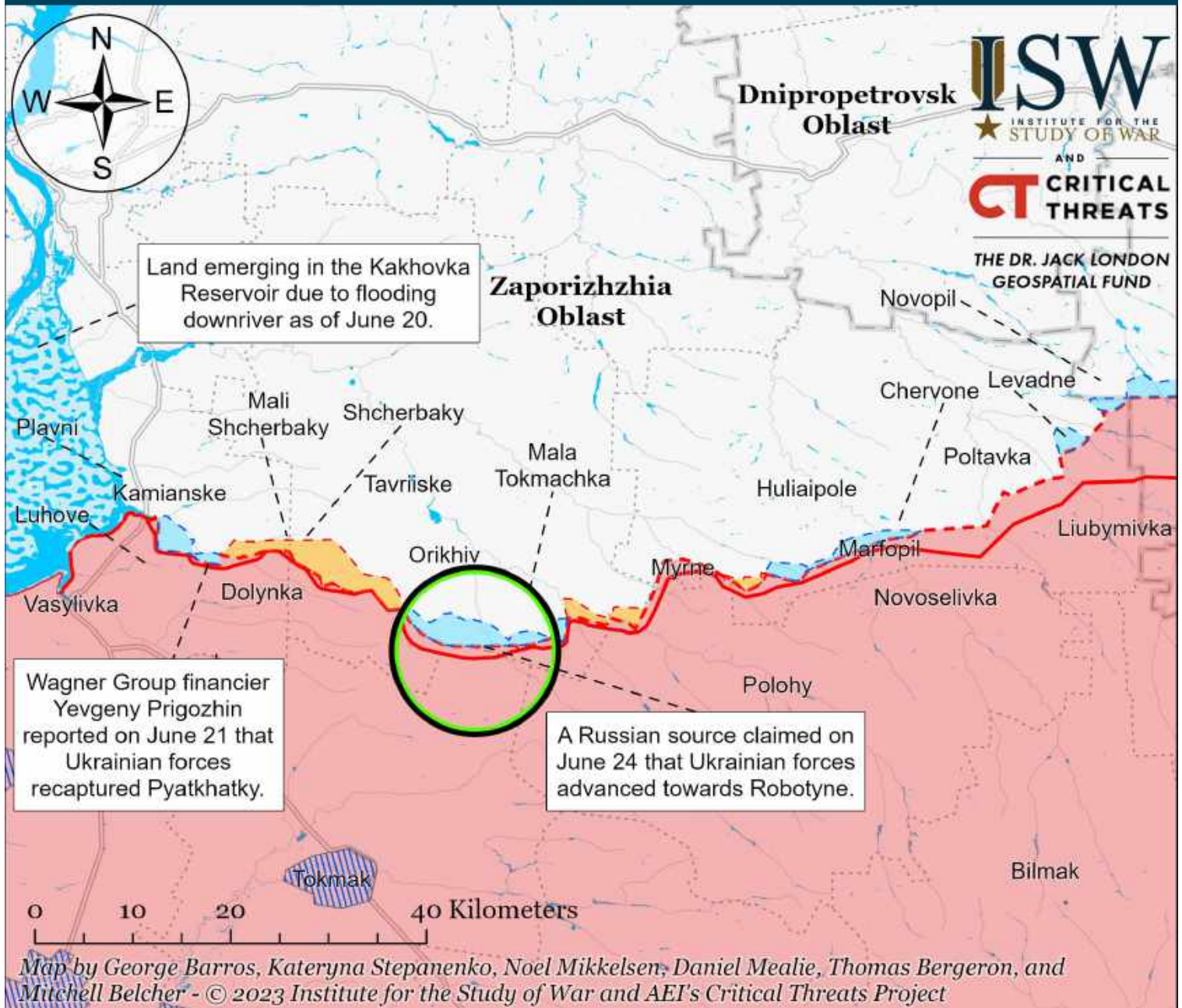
Assessed Control of Terrain in Bakhmut as of June 24, 2023, 3:00 PM ET



- | | | |
|---------------------------------------|--|-------------------------------------|
| Bakhmut City Limits | Assessed Russian-controlled Ukrainian Territory | Claimed Ukrainian Counteroffensives |
| Assessed Russian Advances in Ukraine* | Claimed Russian Control over Ukrainian Territory | Reported Ukrainian Partisan Warfare |

* Assessed Russian advances are areas where ISW assesses Russian forces have operated in or launched attacks against but do not control.

Assessed Control of Terrain Around Zaporizhzhia as of June 24, 2023, 3:00 PM ET



- Significant Fighting in the past 24 Hours
- Assessed Russian-controlled Ukrainian Territory
- Reported Ukrainian Partisan Warfare
- Russian-controlled Ukrainian Territory before February 24
- Claimed Russian Control over Ukrainian Territory
- Emerging land in the Kakhovka Reservoir
- Assessed Russian Advances in Ukraine*
- Claimed Ukrainian Counteroffensives

* Assessed Russian advances are areas where ISW assesses Russian forces have operated in or launched attacks against but do not control.

Note: A Russian source reported on June 24 that Ukrainian forces advanced 1.5 kilometers north of Robotyne over the last 24 hours.

Assessed Control of Terrain Around Kherson and Mykolaiv as of June 24, 2023, 3:00 PM ET



* Assessed Russian advances are areas where ISW assesses Russian forces have operated in or launched attacks against but do not control.

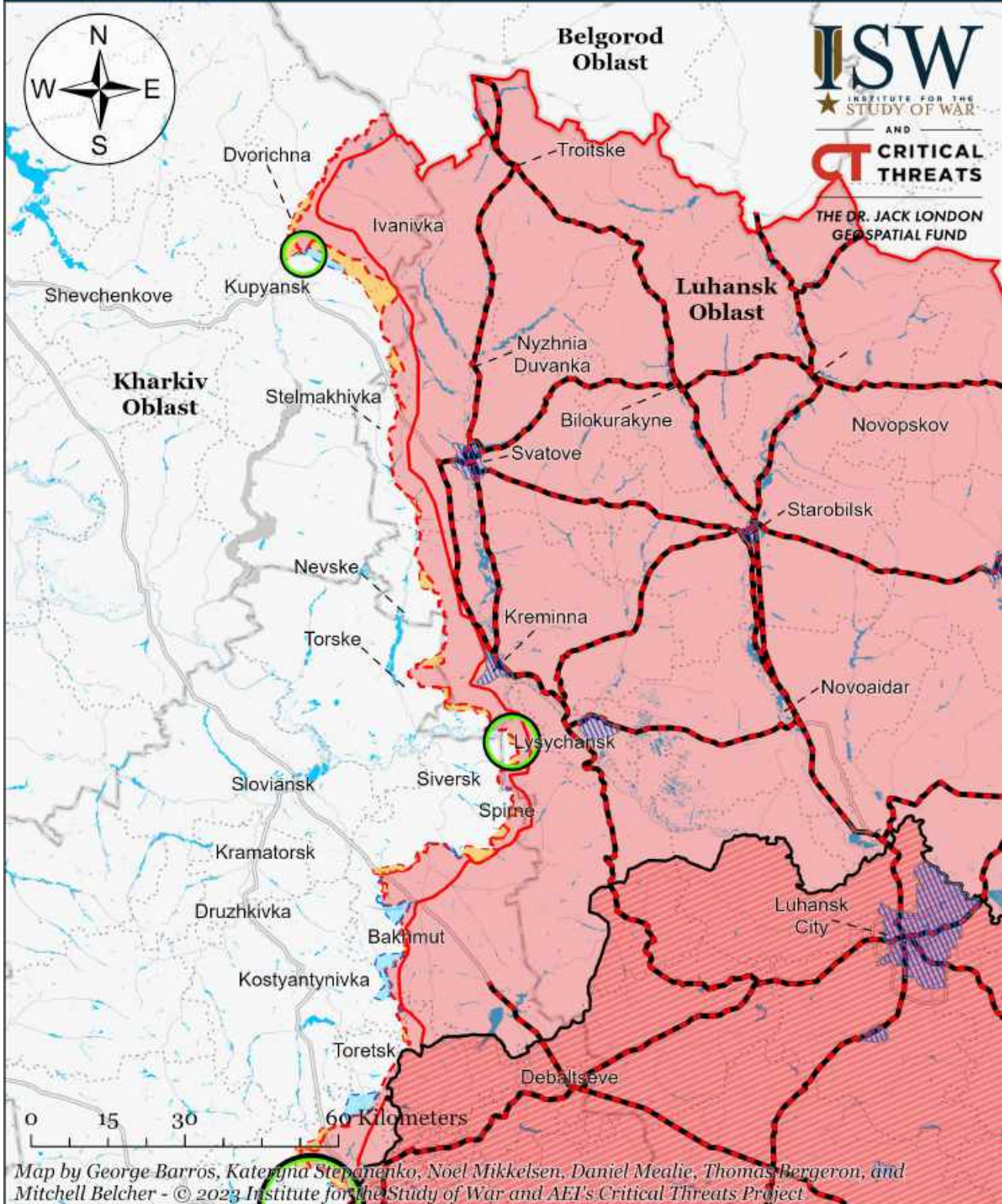
Assessed Control of Terrain in Ukraine and Main Russian Maneuver Axes as of June 23, 2023, 3:00 PM ET



Map by George Barros, Kateryna Stepanenko, Noel Mikkelsen, Daniel Mealie, Thomas Bergeron, and Mitchell Belcher - © 2023 Institute for the Study of War and AEI's Critical Threats Project

* Assessed Russian advances are areas where ISW assesses Russian forces have operated in or launched attacks against but do not control.

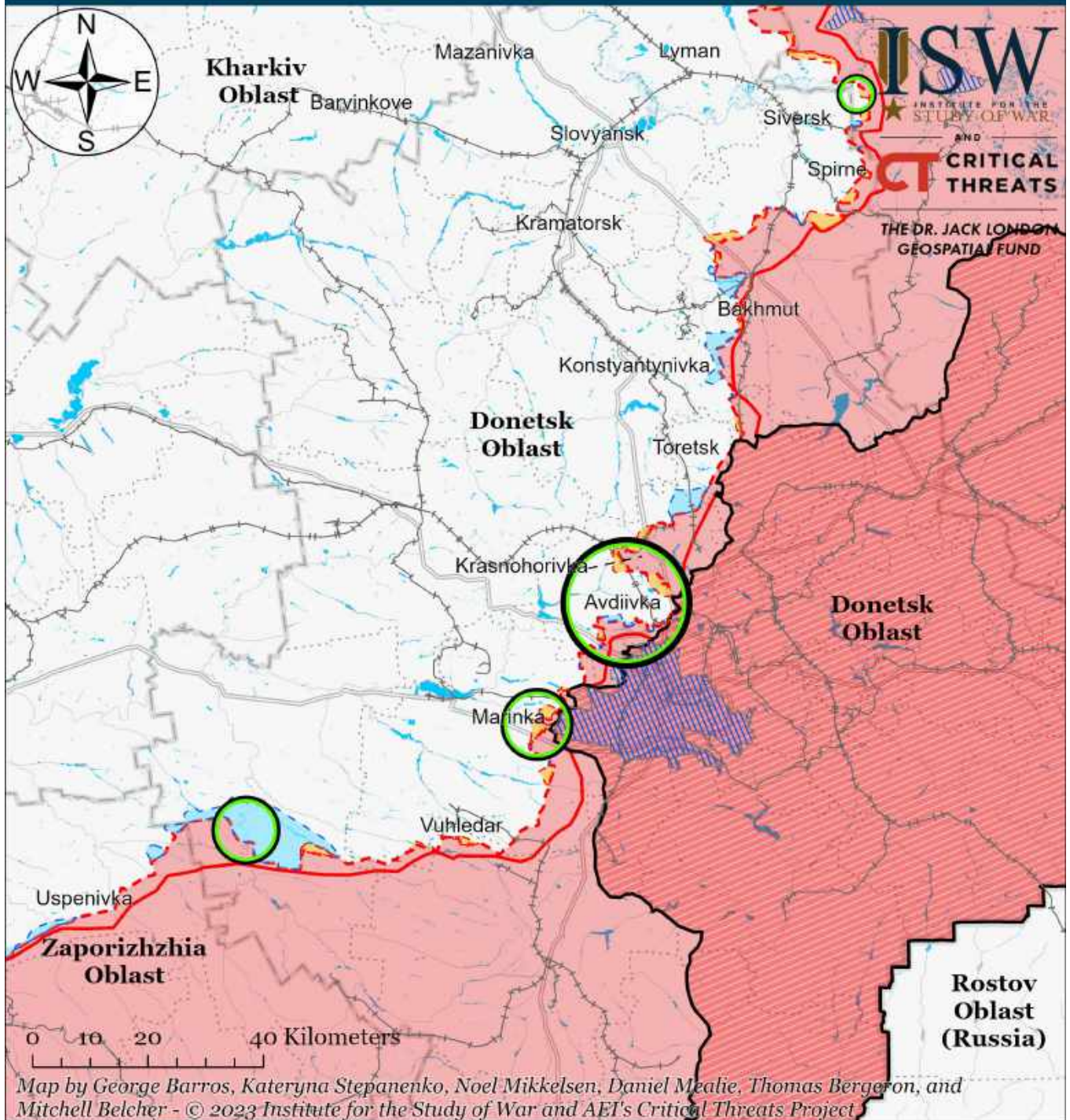
Assessed Control of Terrain Around Luhansk Oblast as of June 23, 2023, 3:00 PM ET



- Significant Fighting in the past 24 Hours
- Assessed Russian Advances in Ukraine*
- Claimed Ukrainian Counteroffensives
- Russian Ground Lines of Communication
- Assessed Russian-controlled Ukrainian Territory
- Reported Ukrainian Partisan Warfare
- Russian-controlled Ukrainian Territory before February 24
- Claimed Russian Control over Ukrainian Territory

* Assessed Russian advances are areas where ISW assesses Russian forces have operated in or launched attacks against but do not control.

Assessed Control of Terrain Around Donetsk as of June 23, 2023, 3:00 PM ET



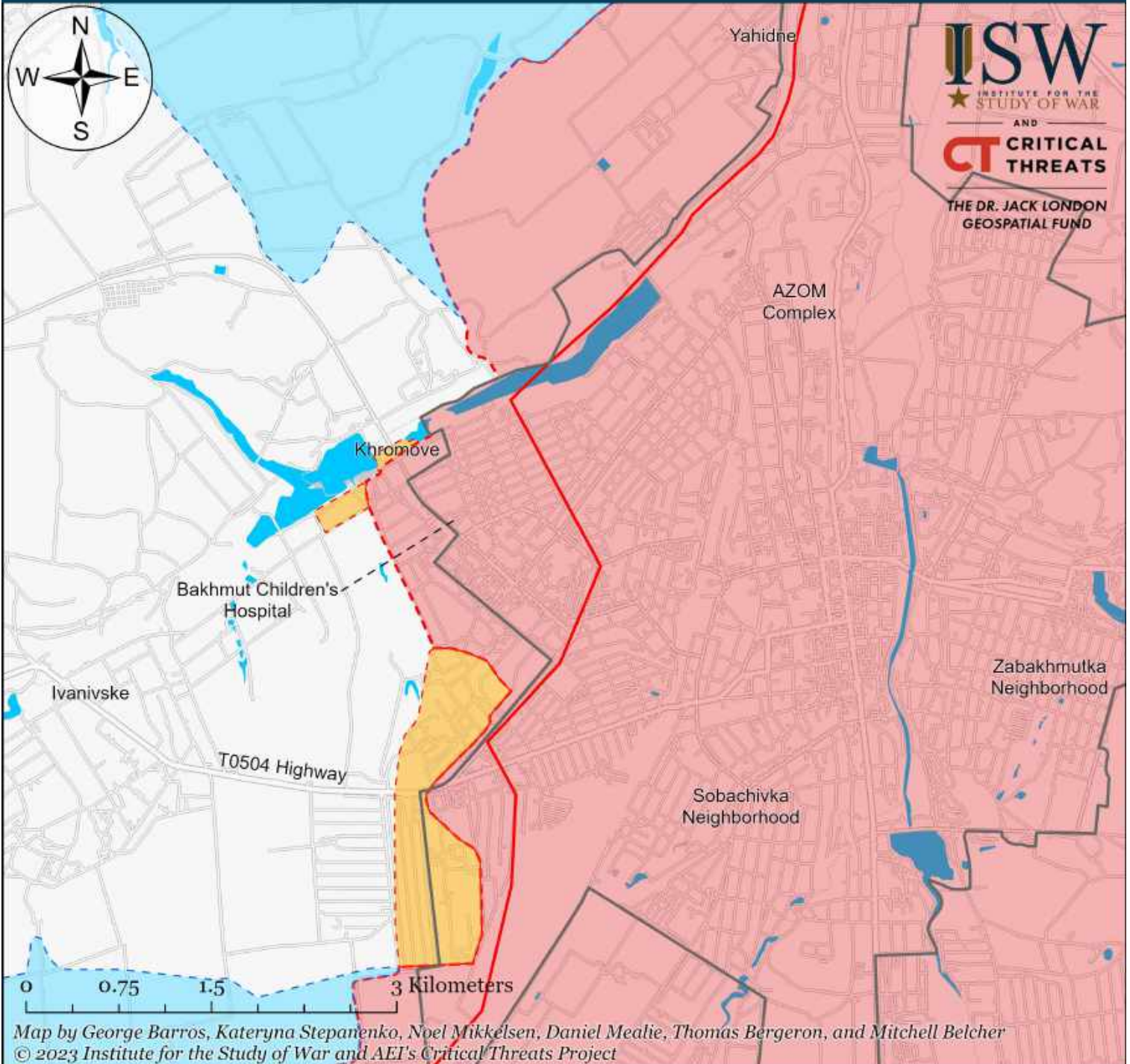
Map by George Barros, Kateryna Stepanenko, Noel Mikkelsen, Daniel Mealie, Thomas Bergeron, and Mitchell Belcher - © 2023 Institute for the Study of War and AET's Critical Threats Project

- Significant Fighting in the past 24 Hours
- Assessed Russian-controlled Ukrainian Territory
- Assessed Russian Advances in Ukraine*
- Russian-controlled Ukrainian Territory before February 24
- Claimed Russian Control over Ukrainian Territory
- Claimed Ukrainian Counteroffensives
- Major Railroads
- Reported Ukrainian Partisan Warfare

* Assessed Russian advances are areas where ISW assesses Russian forces have operated in or launched attacks against but do not control.

Note: Ukrainian Tavriisk Operational Direction Spokesperson Valerii Shershen reported on June 22 that Ukrainian forces advanced one kilometer in the direction of Berdyansk over the last 24 hours. ISW cannot assess the exact areas of advances at this time due to a lack of sufficient evidence.

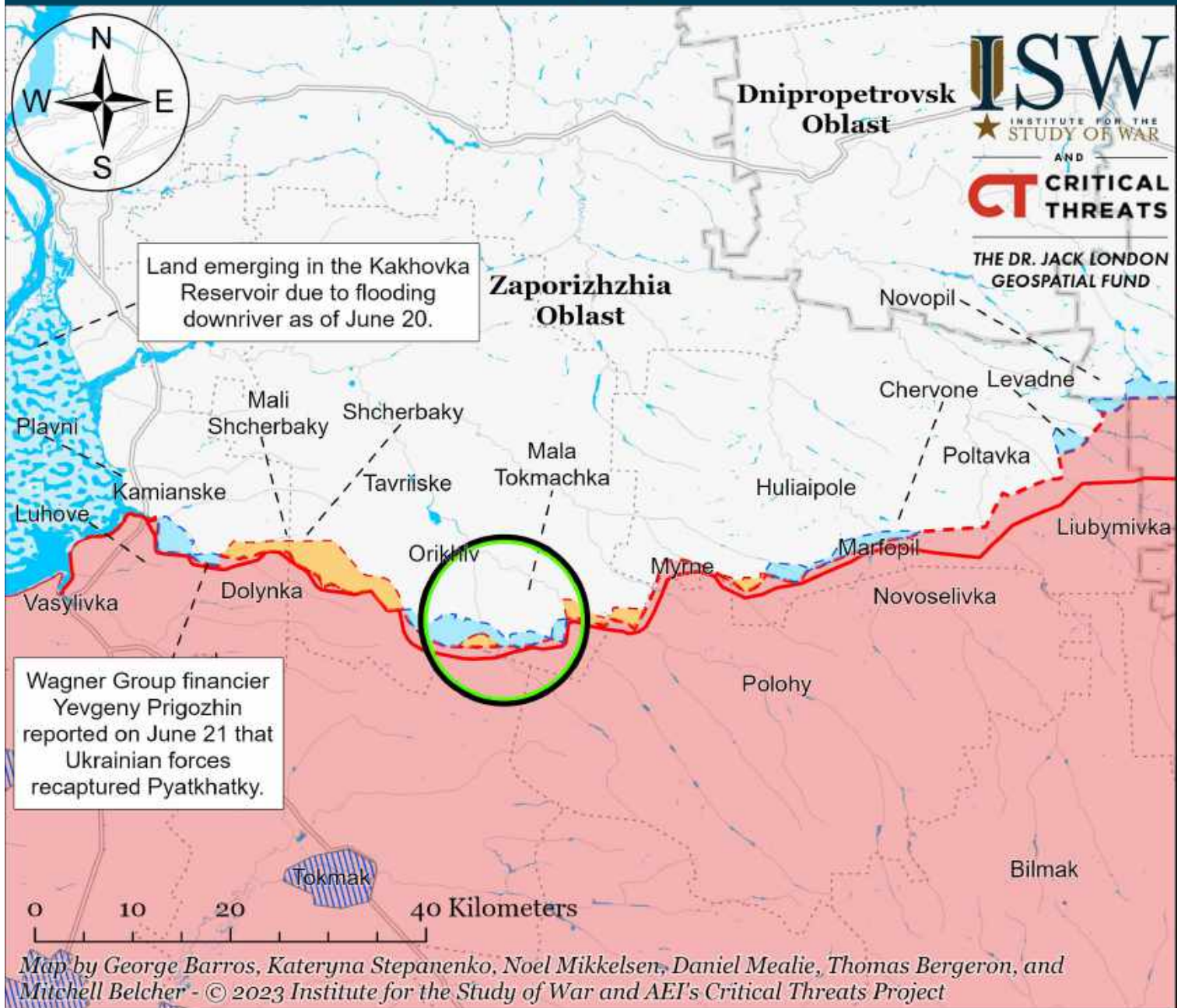
Assessed Control of Terrain in Bakhmut as of June 23, 2023, 3:00 PM ET



- | | | |
|---------------------------------------|--|-------------------------------------|
| Bakhmut City Limits | Assessed Russian-controlled Ukrainian Territory | Claimed Ukrainian Counteroffensives |
| Assessed Russian Advances in Ukraine* | Claimed Russian Control over Ukrainian Territory | Reported Ukrainian Partisan Warfare |

* Assessed Russian advances are areas where ISW assesses Russian forces have operated in or launched attacks against but do not control.

Assessed Control of Terrain Around Zaporizhia as of June 23, 2023, 3:00 PM ET



- Significant Fighting in the past 24 Hours
- Assessed Russian-controlled Ukrainian Territory
- Russian-controlled Ukrainian Territory before February 24
- Claimed Russian Control over Ukrainian Territory
- Reported Ukrainian Partisan Warfare
- Emerging land in the Kakhovka Reservoir
- Assessed Russian Advances in Ukraine*
- Claimed Ukrainian Counteroffensives

* Assessed Russian advances are areas where ISW assesses Russian forces have operated in or launched attacks against but do not control.

Note: Ukrainian Tavriisk Operational Direction Spokesperson Valerii Shershen reported on June 22 that Ukrainian forces advanced one kilometer in the direction of Melitopol over the last 24 hours. ISW cannot assess the exact areas of advances at this time due to a lack of sufficient evidence.

Assessed Control of Terrain Around Kherson and Mykolaiv as of June 23, 2023, 3:00 PM ET



* Assessed Russian advances are areas where ISW assesses Russian forces have operated in or launched attacks against but do not control.

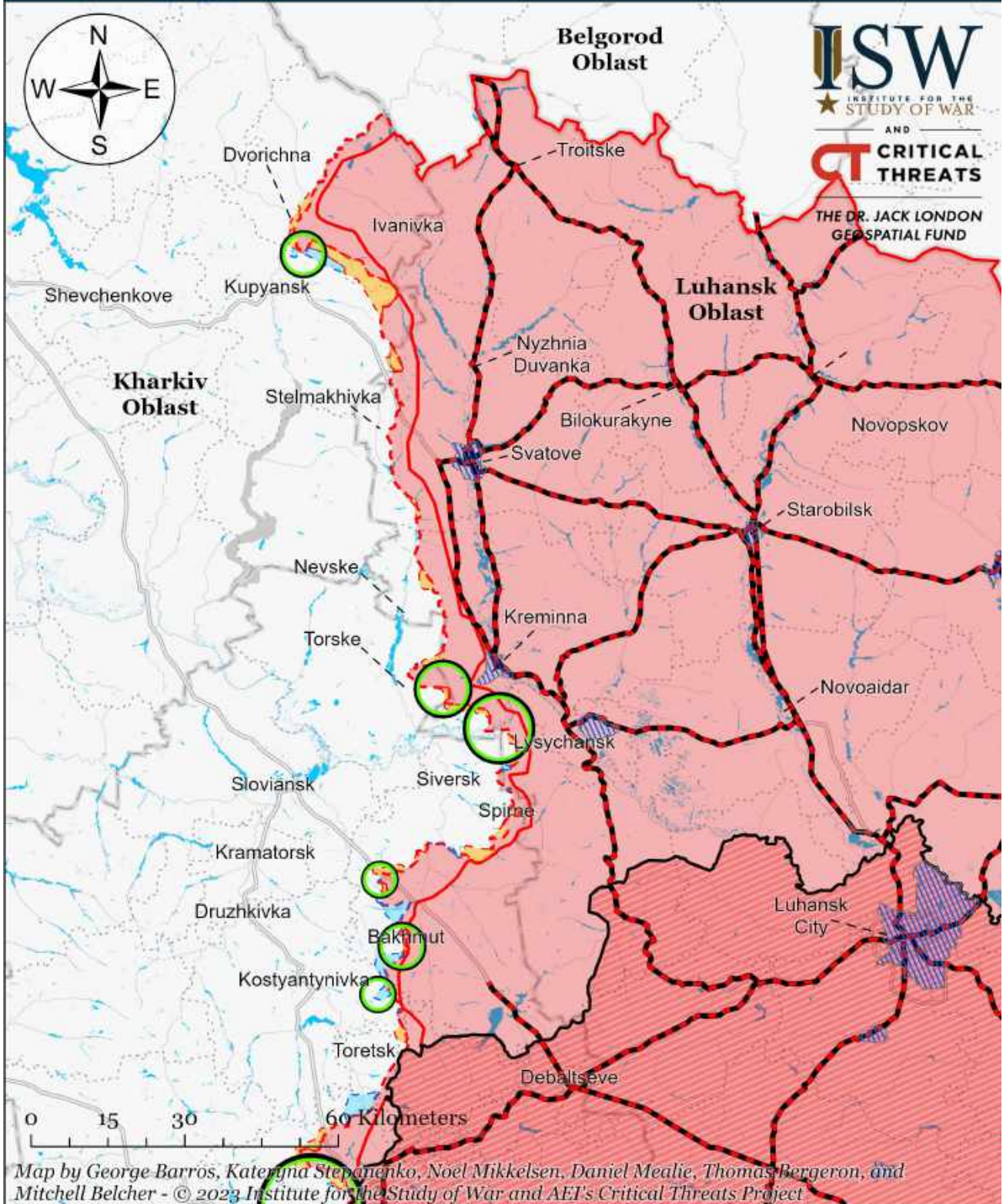
Assessed Control of Terrain in Ukraine and Main Russian Maneuver Axes as of June 22, 2023, 3:00 PM ET



Map by George Barros, Kateryna Stepanenko, Noel Mikkelsen, Daniel Mealie, Thomas Bergeron, and Mitchell Belcher - © 2023 Institute for the Study of War and AEI's Critical Threats Project

* Assessed Russian advances are areas where ISW assesses Russian forces have operated in or launched attacks against but do not control.

Assessed Control of Terrain Around Luhansk Oblast as of June 22, 2023, 3:00 PM ET

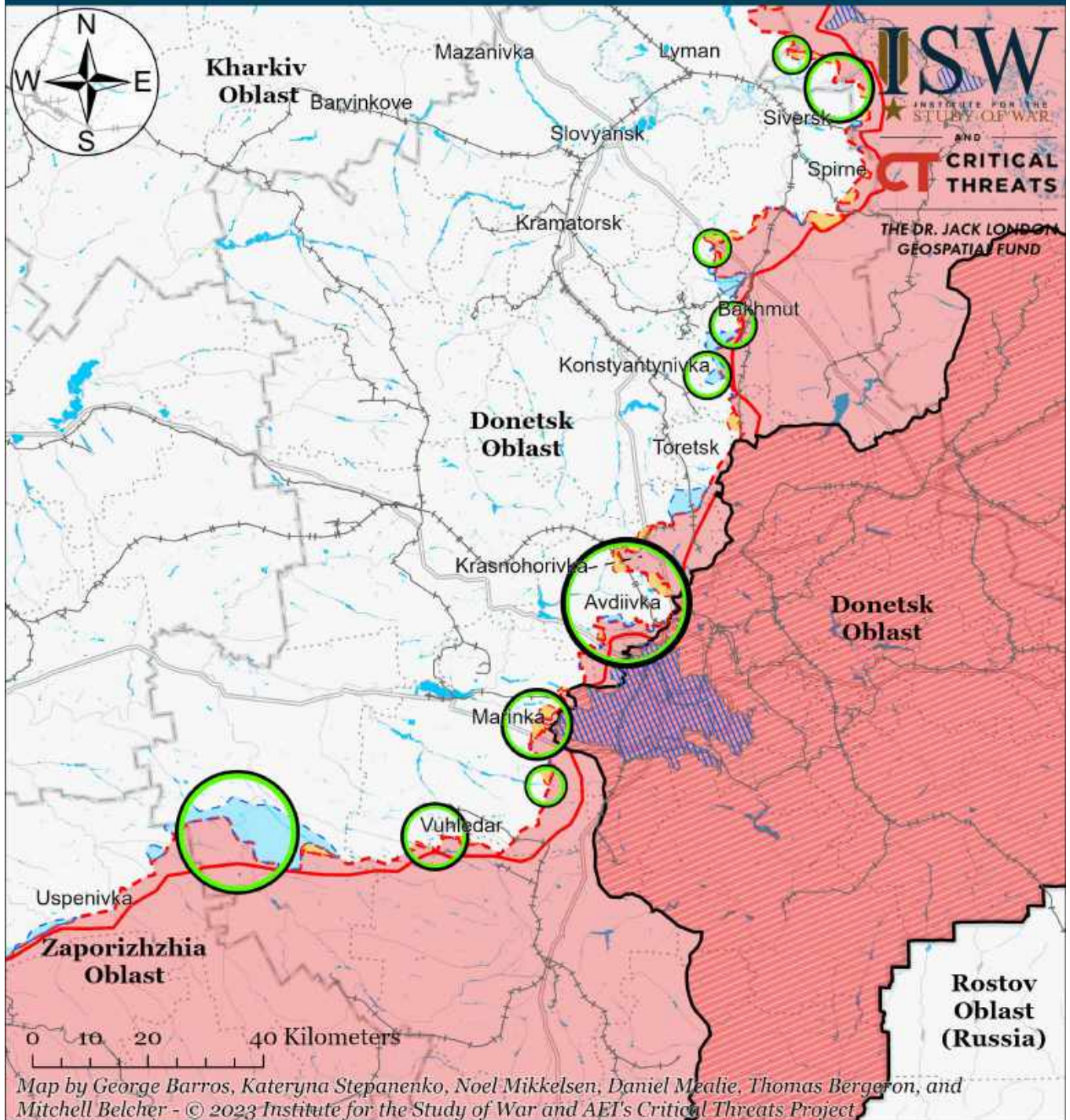


Map by George Barros, Kateryna Stepanenko, Noel Mikkelsen, Daniel Mealie, Thomas Bergeron, and Mitchell Belcher - © 2023 Institute for the Study of War and AET's Critical Threats Project

- Significant Fighting in the past 24 Hours
- Russian Ground Lines of Communication
- Russian-controlled Ukrainian Territory before February 24
- Assessed Russian Advances in Ukraine*
- Assessed Russian-controlled Ukrainian Territory
- Claimed Russian Control over Ukrainian Territory
- Claimed Ukrainian Counteroffensives
- Reported Ukrainian Partisan Warfare

* Assessed Russian advances are areas where ISW assesses Russian forces have operated in or launched attacks against but do not control.

Assessed Control of Terrain Around Donetsk as of June 22, 2023, 3:00 PM ET



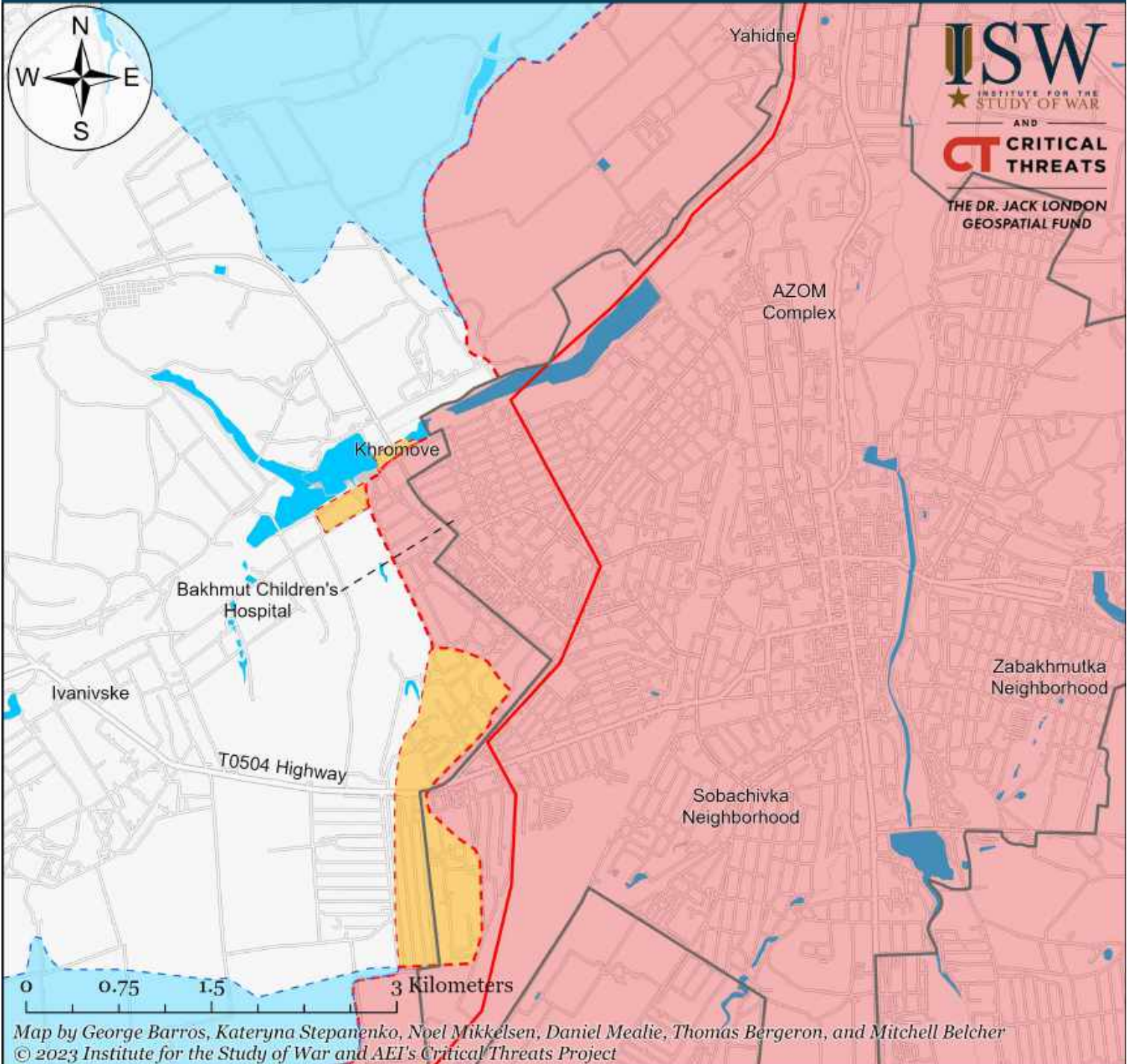
Map by George Barros, Kateryna Stepanenko, Noel Mikkelsen, Daniel Mealie, Thomas Bergeron, and Mitchell Belcher - © 2023 Institute for the Study of War and AET's Critical Threats Project

- | | | |
|---|--|-------------------------------------|
| Significant Fighting in the past 24 Hours | Assessed Russian-controlled Ukrainian Territory | Major Railroads |
| Russian-controlled Ukrainian Territory before February 24 | Claimed Russian Control over Ukrainian Territory | Reported Ukrainian Partisan Warfare |
| Assessed Russian Advances in Ukraine* | Claimed Ukrainian Counteroffensives | |

* Assessed Russian advances are areas where ISW assesses Russian forces have operated in or launched attacks against but do not control.

Note: Ukrainian Tavriisk Operational Direction Spokesperson Valerii Shershen reported on June 22 that Ukrainian forces advanced one kilometer in the direction of Berdyansk over the last 24 hours. ISW cannot assess the exact areas of advances at this time due to a lack of sufficient evidence.

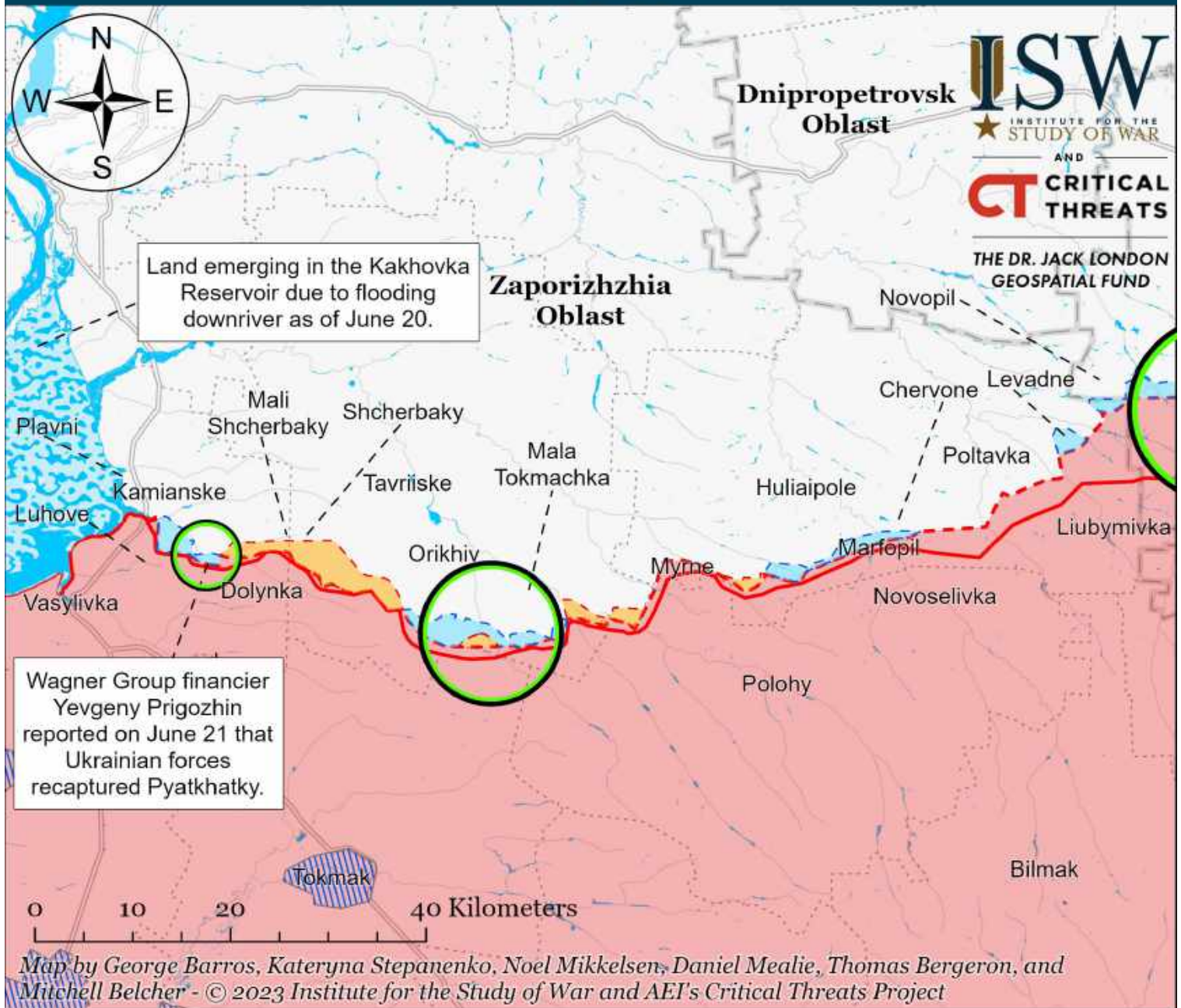
Assessed Control of Terrain in Bakhmut as of June 22, 2023, 3:00 PM ET



- | | | |
|---------------------------------------|--|-------------------------------------|
| Bakhmut City Limits | Assessed Russian-controlled Ukrainian Territory | Claimed Ukrainian Counteroffensives |
| Assessed Russian Advances in Ukraine* | Claimed Russian Control over Ukrainian Territory | Reported Ukrainian Partisan Warfare |

* Assessed Russian advances are areas where ISW assesses Russian forces have operated in or launched attacks against but do not control.

Assessed Control of Terrain Around Zaporizhia as of June 22, 2023, 3:00 PM ET

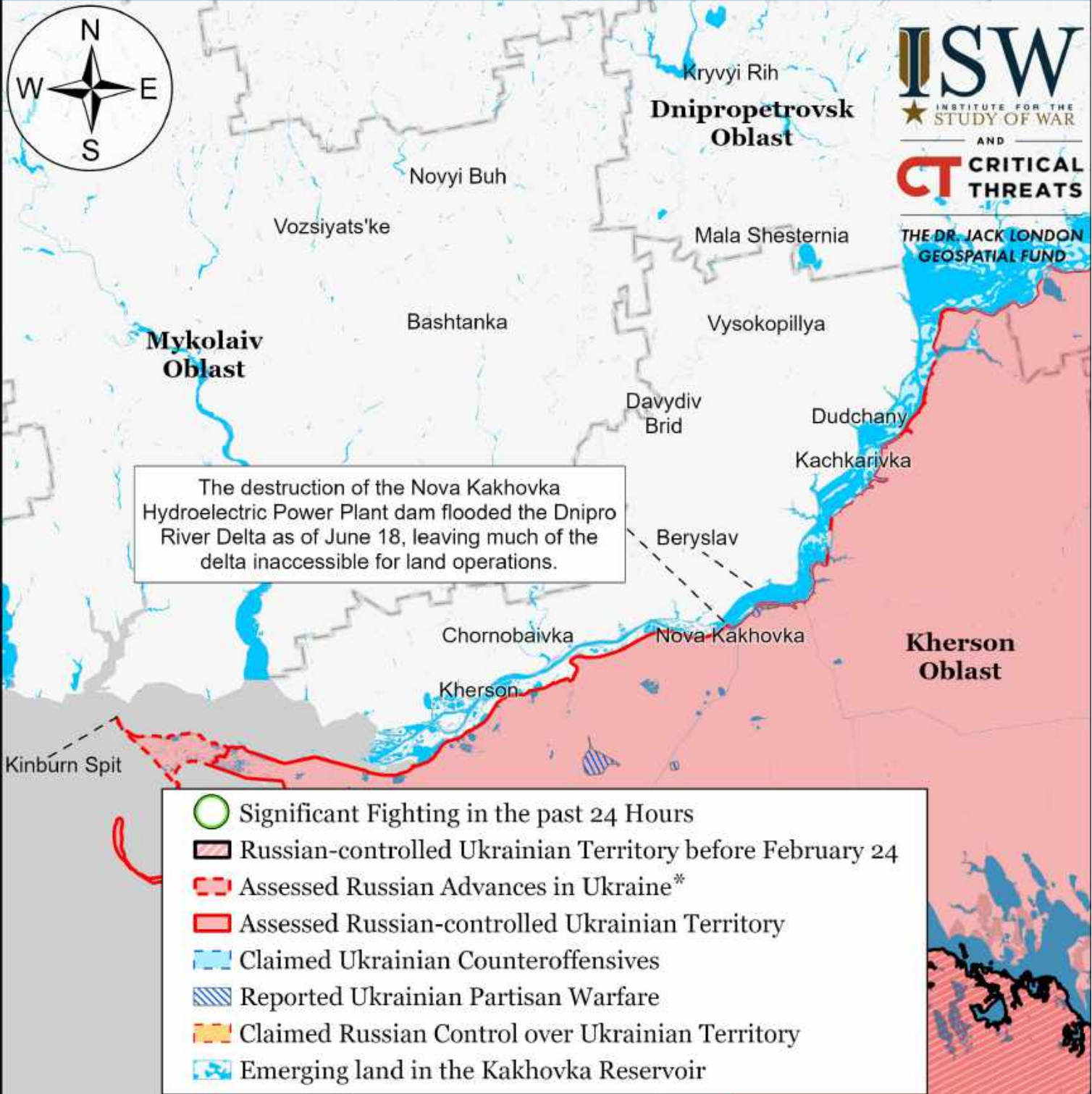


- Significant Fighting in the past 24 Hours
- Assessed Russian-controlled Ukrainian Territory
- Reported Ukrainian Partisan Warfare
- Russian-controlled Ukrainian Territory before February 24
- Claimed Russian Control over Ukrainian Territory
- Emerging land in the Kakhovka Reservoir
- Assessed Russian Advances in Ukraine*
- Claimed Ukrainian Counteroffensives

* Assessed Russian advances are areas where ISW assesses Russian forces have operated in or launched attacks against but do not control.

Note: Ukrainian Tavriisk Operational Direction Spokesperson Valerii Shershen reported on June 22 that Ukrainian forces advanced one kilometer in the direction of Melitopol over the last 24 hours. ISW cannot assess the exact areas of advances at this time due to a lack of sufficient evidence.

Assessed Control of Terrain Around Kherson and Mykolaiv as of June 22, 2023, 3:00 PM ET



- Significant Fighting in the past 24 Hours
- Russian-controlled Ukrainian Territory before February 24
- Assessed Russian Advances in Ukraine*
- Assessed Russian-controlled Ukrainian Territory
- Claimed Ukrainian Counteroffensives
- Reported Ukrainian Partisan Warfare
- Claimed Russian Control over Ukrainian Territory
- Emerging land in the Kakhovka Reservoir

0 20 40 80 Kilometers

Map by George Barros, Kateryna Stepanenko, Noel Mikkelsen, Daniel Mealie, Thomas Bergeron, and Mitchell Belcher - © 2023 Institute for the Study of War and AEI's Critical Threats Project

* Assessed Russian advances are areas where ISW assesses Russian forces have operated in or launched attacks against but do not control.

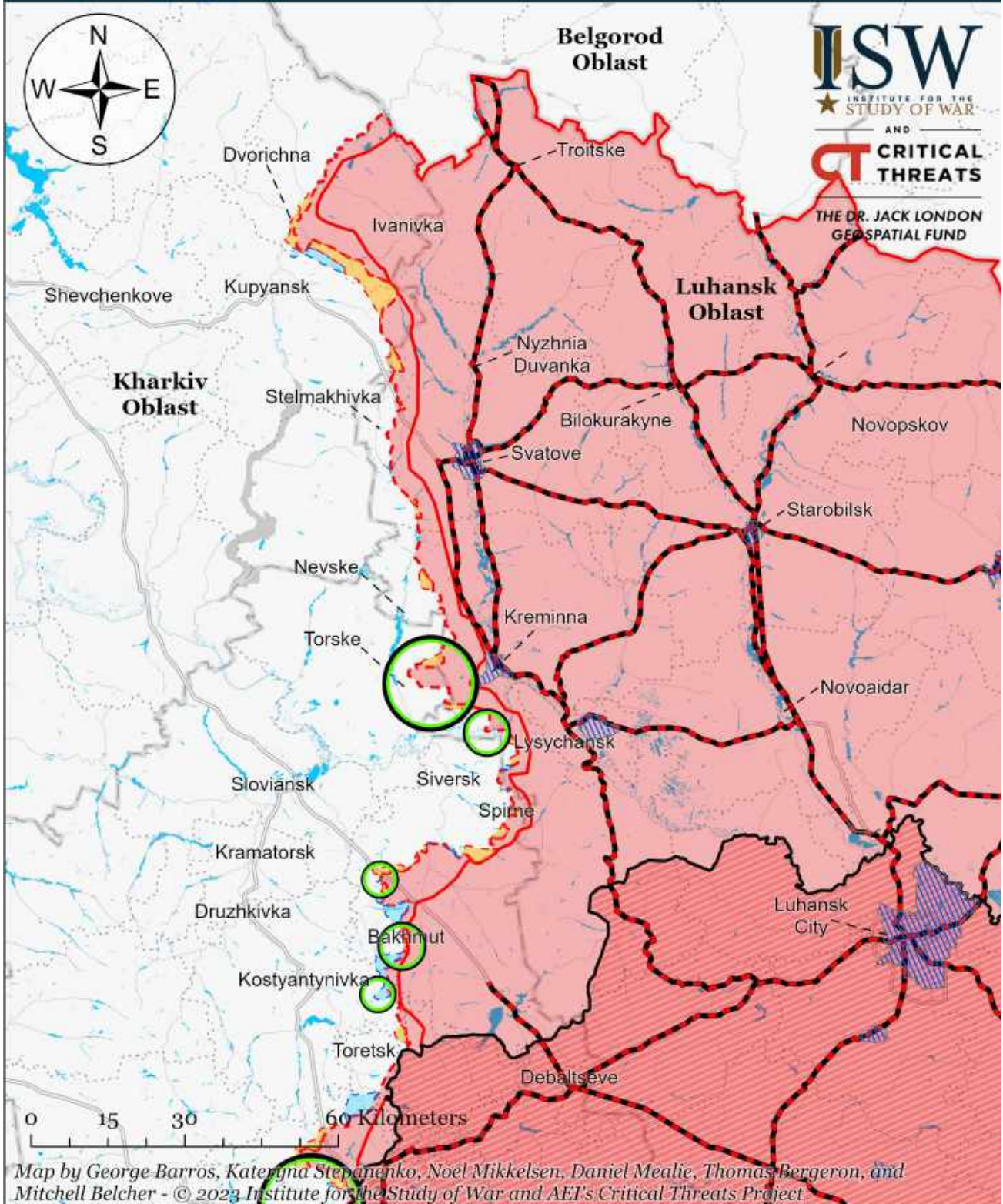
Assessed Control of Terrain in Ukraine and Main Russian Maneuver Axes as of June 21, 2023, 3:00 PM ET



Map by George Barros, Kateryna Stepanenko, Noel Mikkelsen, Daniel Mealie, Thomas Bergeron, and Mitchell Belcher - © 2023 Institute for the Study of War and AEI's Critical Threats Project

* Assessed Russian advances are areas where ISW assesses Russian forces have operated in or launched attacks against but do not control.

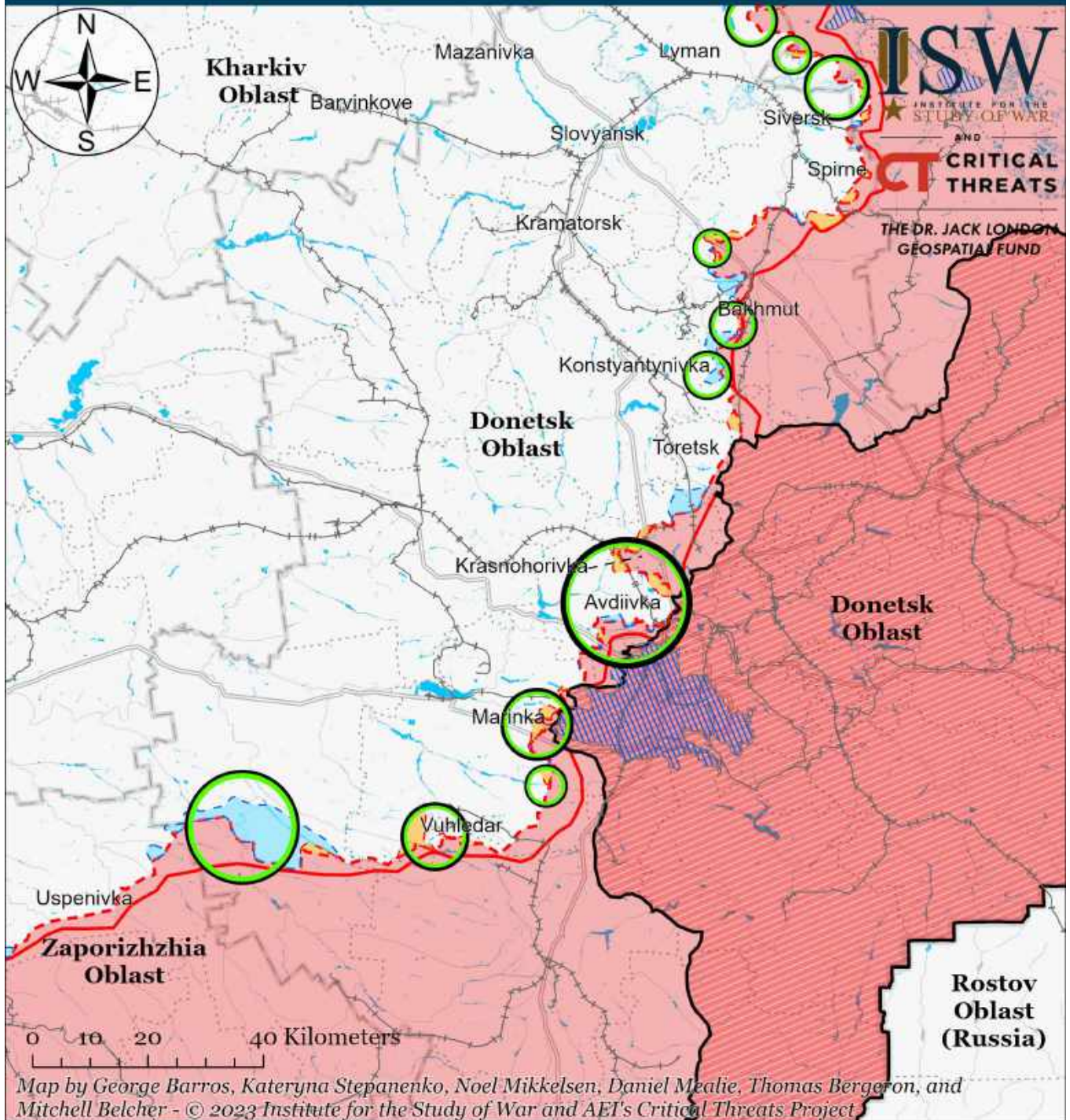
Assessed Control of Terrain Around Luhansk Oblast as of June 21, 2023, 3:00 PM ET



- Significant Fighting in the past 24 Hours
- Assessed Russian Advances in Ukraine*
- Claimed Ukrainian Counteroffensives
- Russian Ground Lines of Communication
- Assessed Russian-controlled Ukrainian Territory
- Reported Ukrainian Partisan Warfare
- Russian-controlled Ukrainian Territory before February 24
- Claimed Russian Control over Ukrainian Territory

* Assessed Russian advances are areas where ISW assesses Russian forces have operated in or launched attacks against but do not control.

Assessed Control of Terrain Around Donetsk as of June 21, 2023, 3:00 PM ET

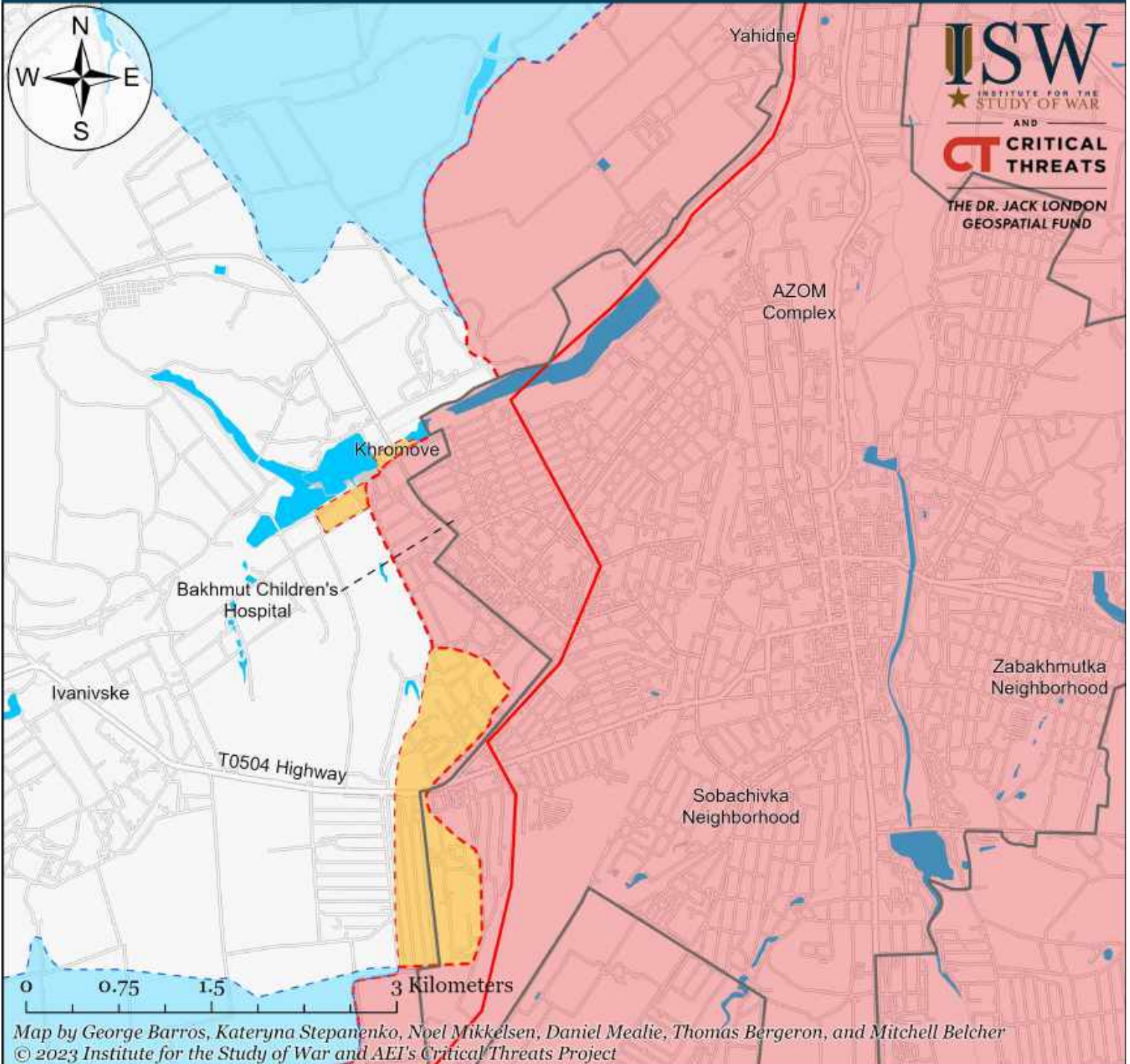


- Significant Fighting in the past 24 Hours
- Assessed Russian-controlled Ukrainian Territory
- Russian-controlled Ukrainian Territory before February 24
- Claimed Russian Control over Ukrainian Territory
- Assessed Russian Advances in Ukraine*
- Claimed Ukrainian Counteroffensives
- Major Railroads
- Reported Ukrainian Partisan Warfare

* Assessed Russian advances are areas where ISW assesses Russian forces have operated in or launched attacks against but do not control.

Note: Wagner Group financier Yevgeny Prigozhin reported on June 21 that Ukrainian forces recaptured Urozhaine. Multiple Russian sources claimed on June 20 and 21 that Russian forces control Urozhaine. ISW cannot assess the exact areas of advances at this time due to a lack of sufficient evidence.

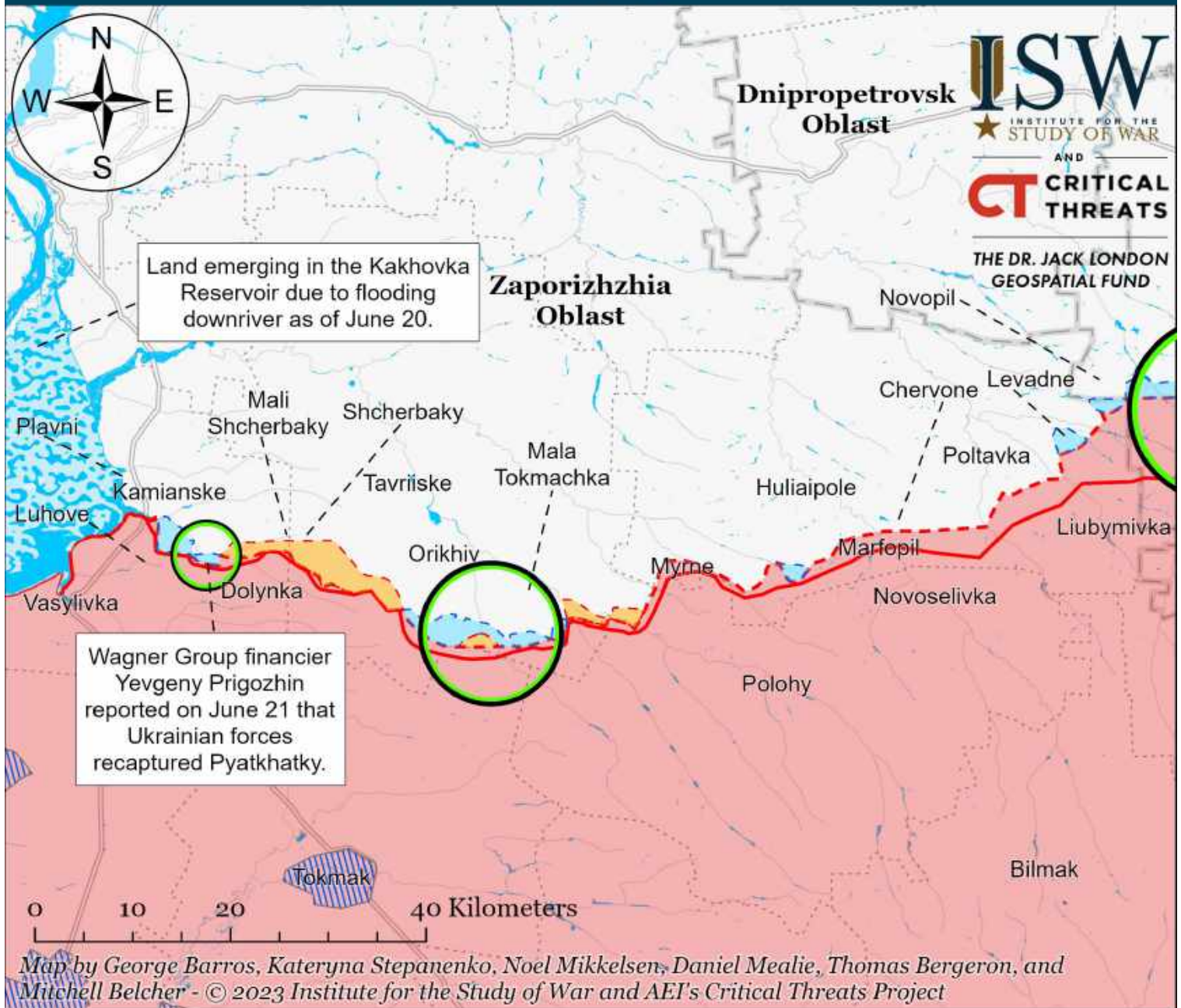
Assessed Control of Terrain in Bakhmut as of June 21, 2023, 3:00 PM ET



- | | | |
|---------------------------------------|--|-------------------------------------|
| Bakhmut City Limits | Assessed Russian-controlled Ukrainian Territory | Claimed Ukrainian Counteroffensives |
| Assessed Russian Advances in Ukraine* | Claimed Russian Control over Ukrainian Territory | Reported Ukrainian Partisan Warfare |

* Assessed Russian advances are areas where ISW assesses Russian forces have operated in or launched attacks against but do not control.

Assessed Control of Terrain Around Zaporizhzhia as of June 21, 2023, 3:00 PM ET

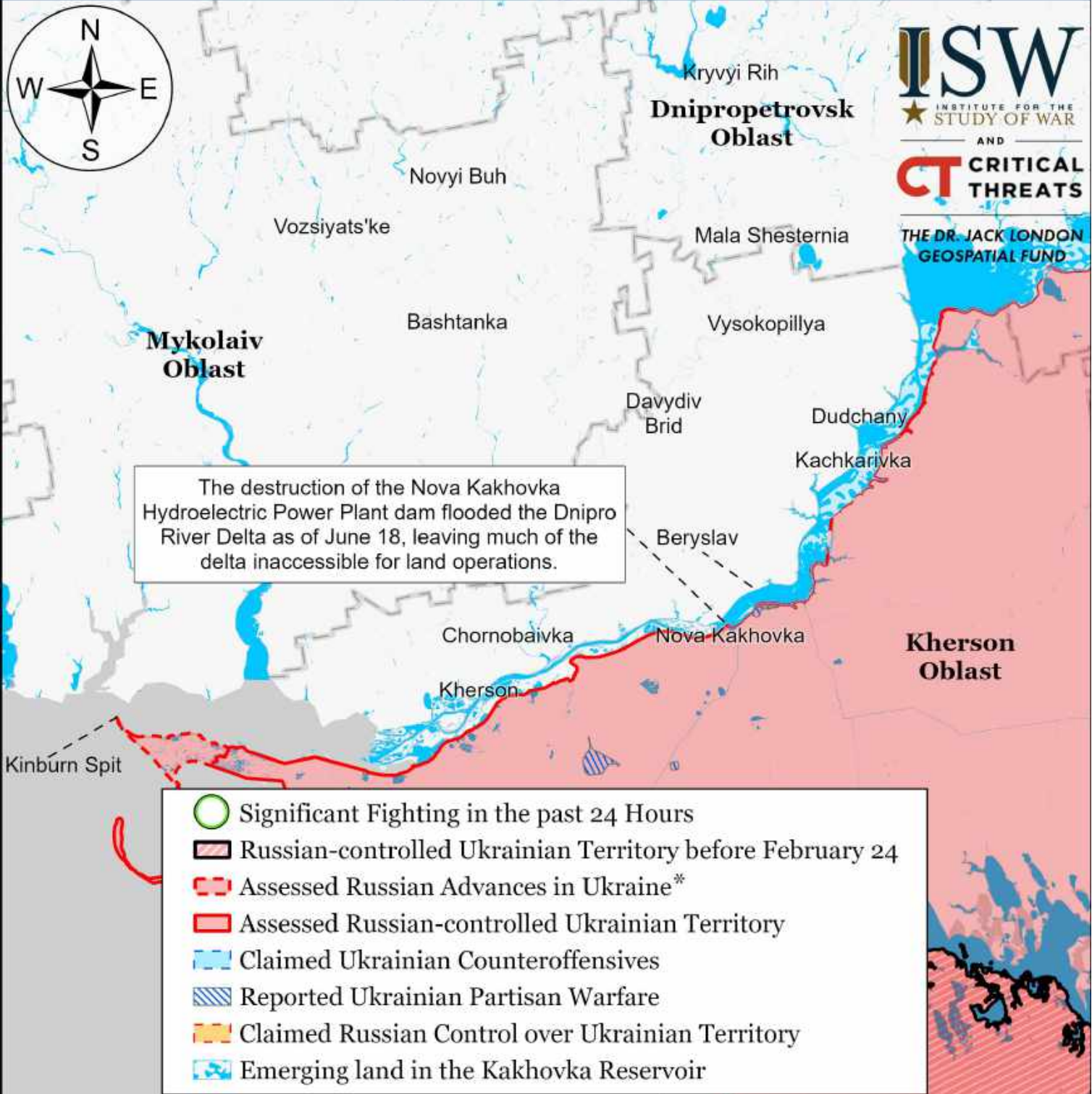


- Significant Fighting in the past 24 Hours
- Assessed Russian-controlled Ukrainian Territory
- Reported Ukrainian Partisan Warfare
- Russian-controlled Ukrainian Territory before February 24
- Claimed Russian Control over Ukrainian Territory
- Emerging land in the Kakhovka Reservoir
- Assessed Russian Advances in Ukraine*
- Claimed Ukrainian Counteroffensives

* Assessed Russian advances are areas where ISW assesses Russian forces have operated in or launched attacks against but do not control.

Note: Wagner Group financier Yevgeny Prigozhin reported on June 21 that Ukrainian forces captured Pyatykhatky and advanced towards the northern outskirts of Robotyne. Multiple Russian sources claimed on June 19 and June 20 that Russian forces recaptured Pyatykhatky and conducted counterattacks north of Robotyne, however, ISW cannot assess the exact areas of advances at this time.

Assessed Control of Terrain Around Kherson and Mykolaiv as of June 21, 2023, 3:00 PM ET



- Significant Fighting in the past 24 Hours
- Russian-controlled Ukrainian Territory before February 24
- Assessed Russian Advances in Ukraine*
- Assessed Russian-controlled Ukrainian Territory
- Claimed Ukrainian Counteroffensives
- Reported Ukrainian Partisan Warfare
- Claimed Russian Control over Ukrainian Territory
- Emerging land in the Kakhovka Reservoir

0 20 40 80 Kilometers

Map by George Barros, Kateryna Stepanenko, Noel Mikkelsen, Daniel Mealie, Thomas Bergeron, and Mitchell Belcher - © 2023 Institute for the Study of War and AEI's Critical Threats Project

* Assessed Russian advances are areas where ISW assesses Russian forces have operated in or launched attacks against but do not control.

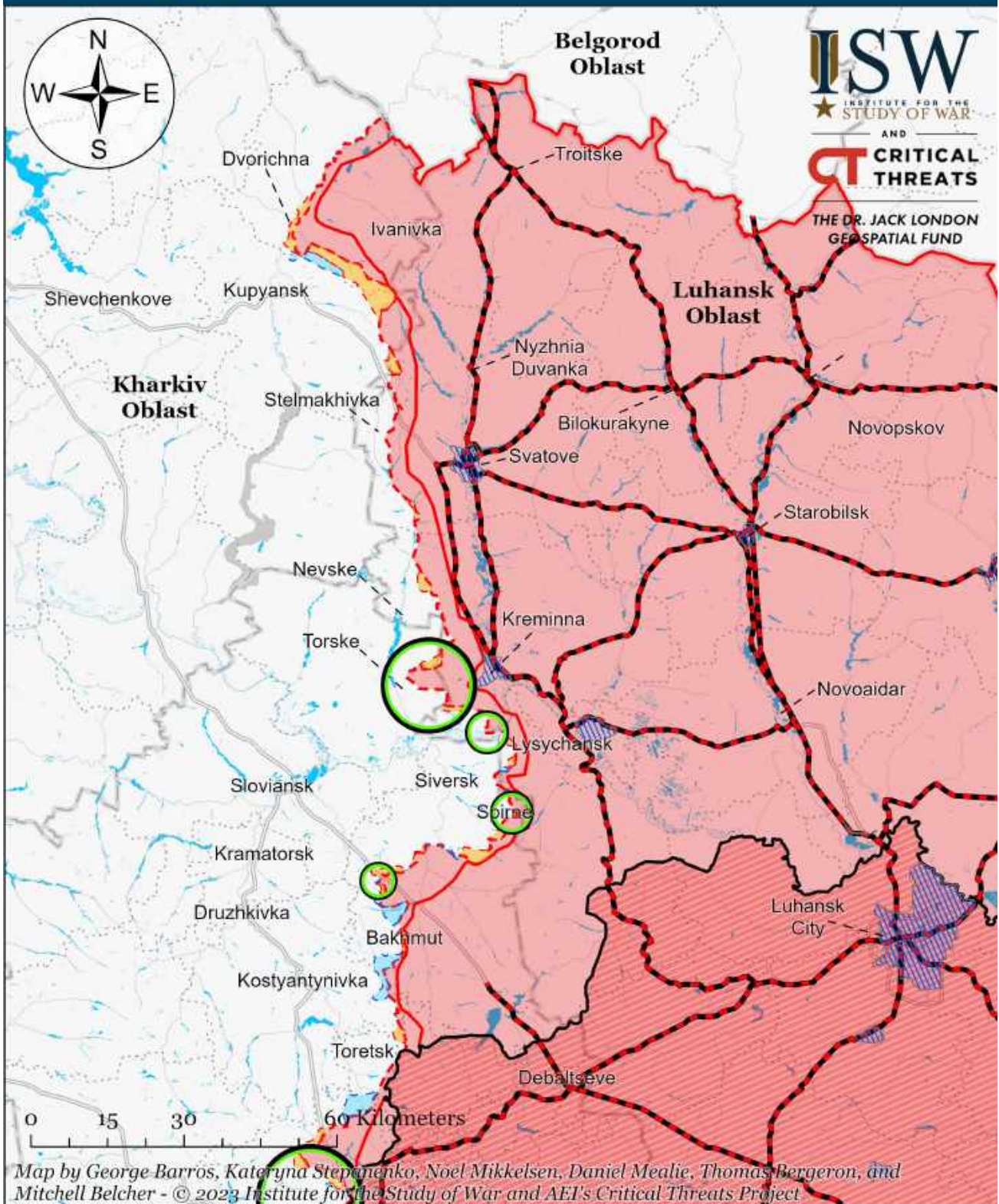
Assessed Control of Terrain in Ukraine and Main Russian Maneuver Axes as of June 20, 2023, 3:00 PM ET



Map by George Barros, Kateryna Stepanenko, Noel Mikkelsen, Daniel Mealie, Thomas Bergeron, and Mitchell Belcher - © 2023 Institute for the Study of War and AEI's Critical Threats Project

* Assessed Russian advances are areas where ISW assesses Russian forces have operated in or launched attacks against but do not control.

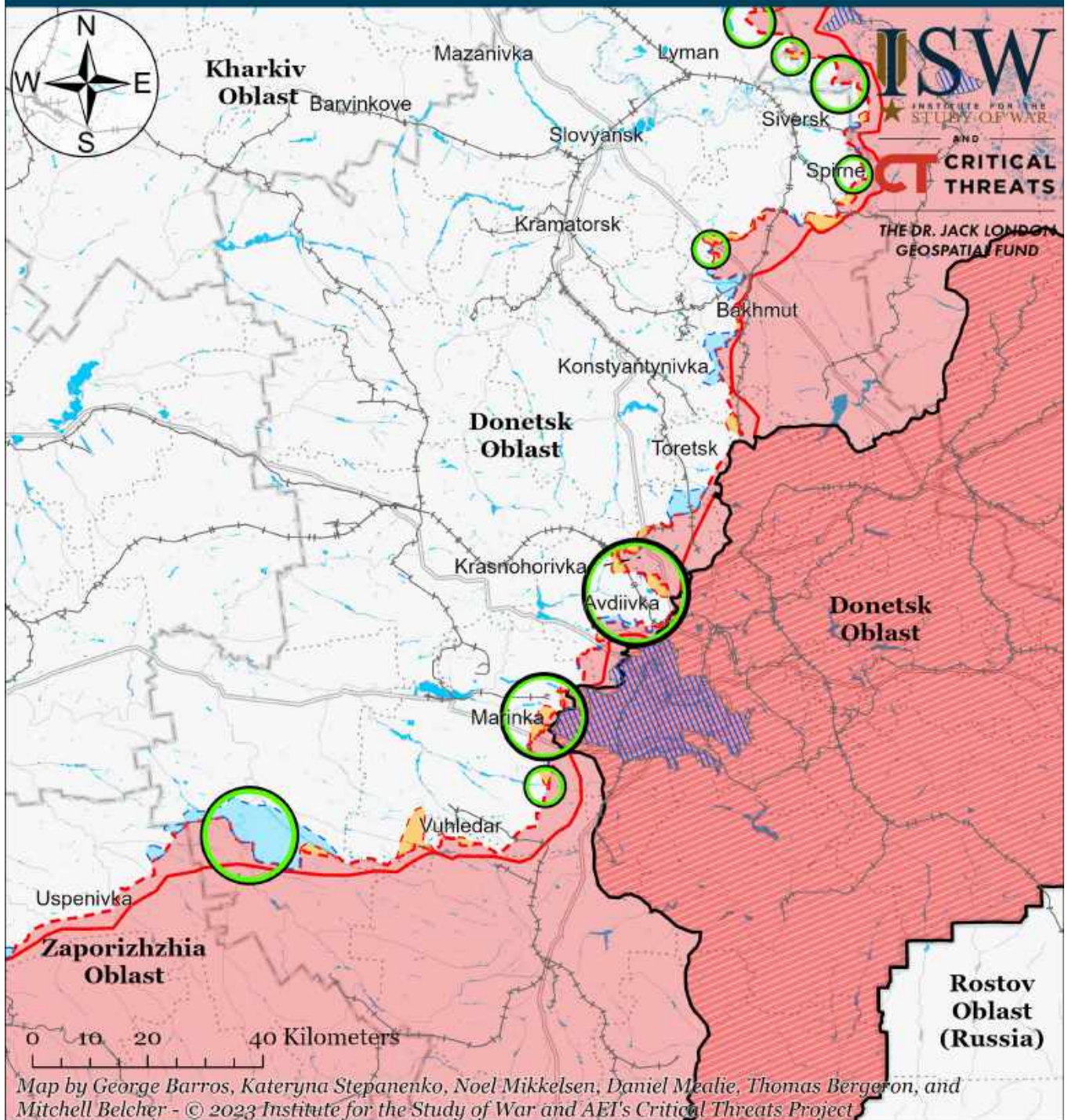
Assessed Control of Terrain Around Luhansk Oblast as of June 20, 2023, 3:00 PM ET



- Significant Fighting in the past 24 Hours
- - - Assessed Russian Advances in Ukraine*
- Claimed Ukrainian Counteroffensives
- Russian Ground Lines of Communication
- Assessed Russian-controlled Ukrainian Territory
- ▨ Reported Ukrainian Partisan Warfare
- Russian-controlled Ukrainian Territory before February 24
- Claimed Russian Control over Ukrainian Territory

* Assessed Russian advances are areas where ISW assesses Russian forces have operated in or launched attacks against but do not control.

Assessed Control of Terrain Around Donetsk as of June 20, 2023, 3:00 PM ET



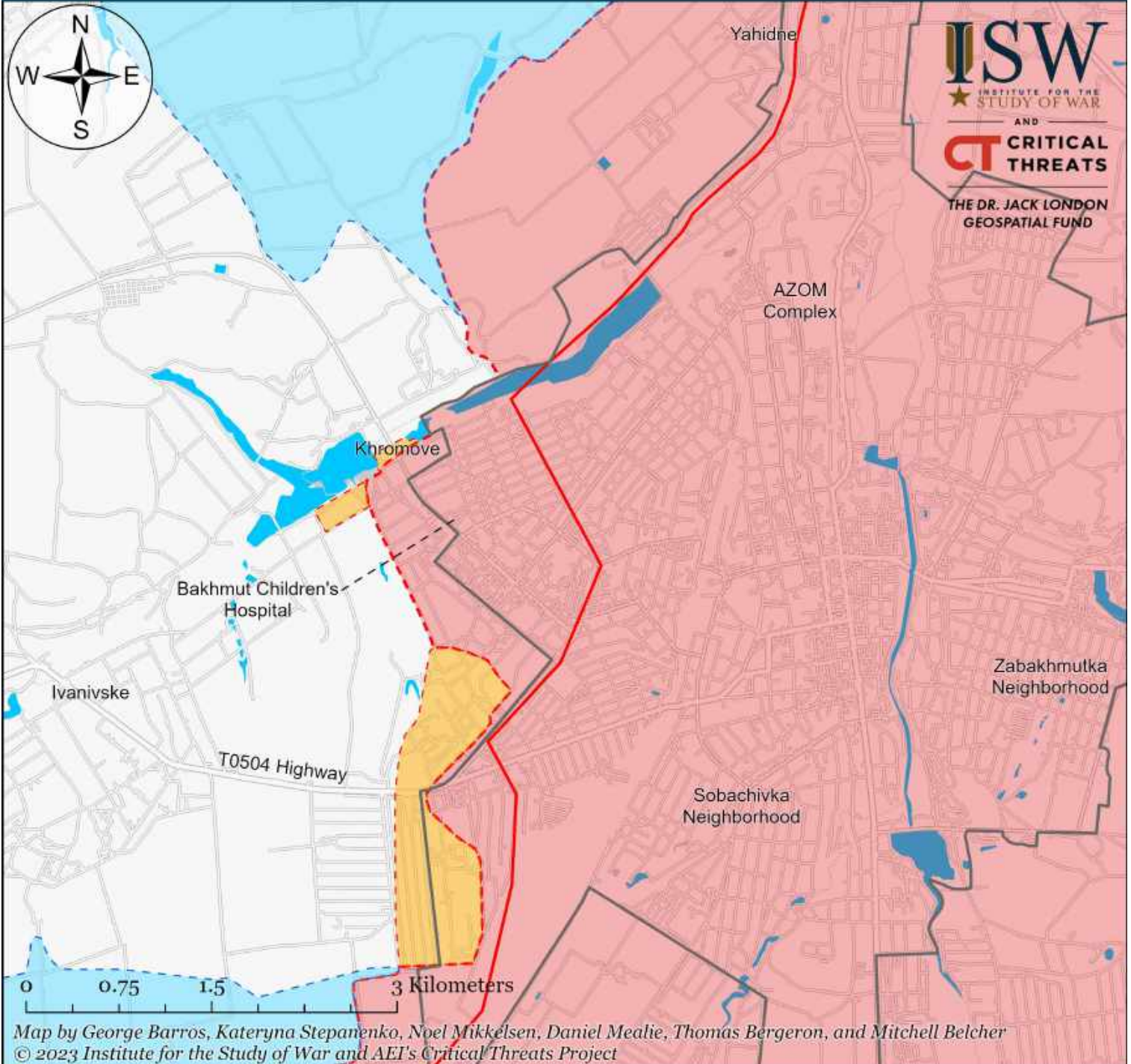
Map by George Barros, Kateryna Stepanenko, Noel Mikkelsen, Daniel Mealie, Thomas Bergeron, and Mitchell Belcher - © 2023 Institute for the Study of War and AET's Critical Threats Project

- Significant Fighting in the past 24 Hours
- Assessed Russian-controlled Ukrainian Territory
- Russian-controlled Ukrainian Territory before February 24
- Claimed Russian Control over Ukrainian Territory
- Assessed Russian Advances in Ukraine*
- Claimed Ukrainian Counteroffensives
- Major Railroads
- Reported Ukrainian Partisan Warfare

* Assessed Russian advances are areas where ISW assesses Russian forces have operated in or launched attacks against but do not control.

Note: Avdiivka City Military Administration Head Vitaliy Barabash reported on June 18 that Ukrainian forces advanced more than a kilometer north of Avdiivka on the Donetsk City frontline over the past two weeks.

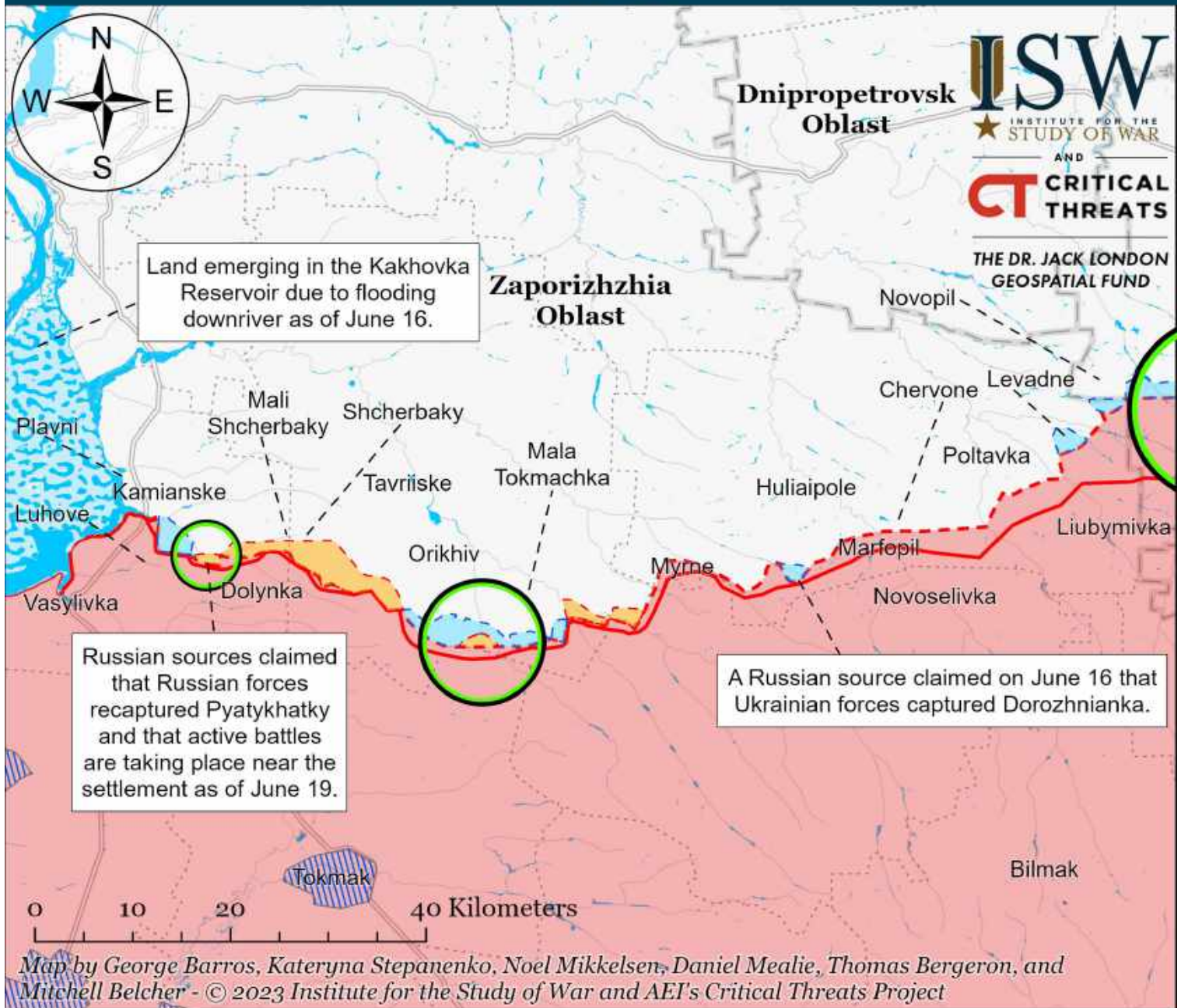
Assessed Control of Terrain in Bakhmut as of June 20, 2023, 3:00 PM ET



- Bakhmut City Limits
- Assessed Russian-controlled Ukrainian Territory
- Assessed Russian Advances in Ukraine*
- Claimed Russian Control over Ukrainian Territory
- Claimed Ukrainian Counteroffensives
- Reported Ukrainian Partisan Warfare

* Assessed Russian advances are areas where ISW assesses Russian forces have operated in or launched attacks against but do not control.

Assessed Control of Terrain Around Zaporizhzhia as of June 20, 2023, 3:00 PM ET

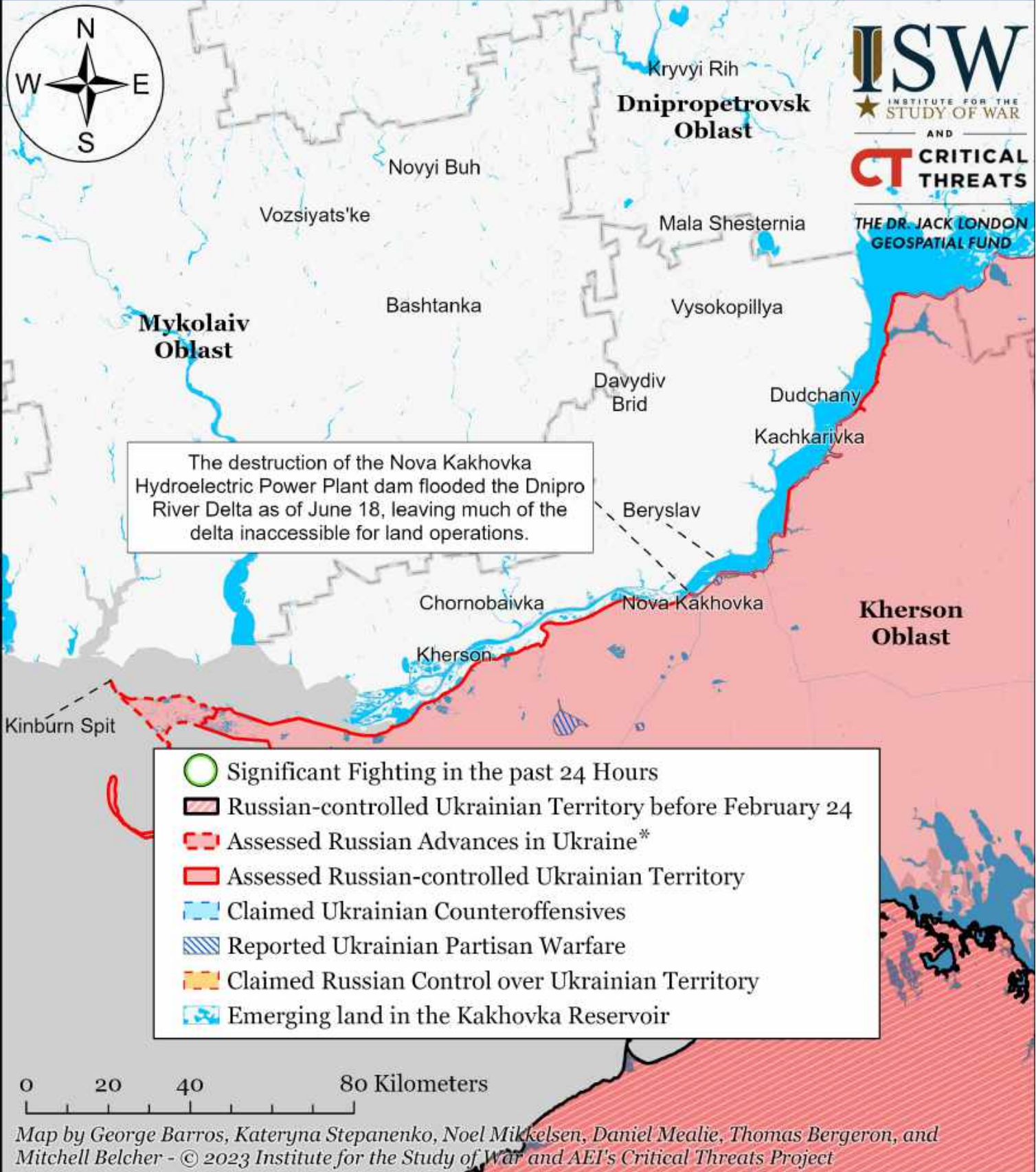


- Significant Fighting in the past 24 Hours
- Assessed Russian-controlled Ukrainian Territory
- Reported Ukrainian Partisan Warfare
- Russian-controlled Ukrainian Territory before February 24
- Claimed Russian Control over Ukrainian Territory
- Emerging land in the Kakhovka Reservoir
- Assessed Russian Advances in Ukraine*
- Claimed Ukrainian Counteroffensives

* Assessed Russian advances are areas where ISW assesses Russian forces have operated in or launched attacks against but do not control.

Note: Multiple Russian sources claimed that Russian forces recaptured Pyatykhatky and that active battles are taking place near the settlement as of June 19. Geolocated footage published on June 19 and 20 shows Ukrainian forces in Pyatykhatky and Russian forces assaulting the settlement, respectively, however ISW cannot assess the exact areas of advances at this time.

Assessed Control of Terrain Around Kherson and Mykolaiv as of June 20, 2023, 3:00 PM ET



Map by George Barros, Kateryna Stepanenko, Noel Mikkelsen, Daniel Mealie, Thomas Bergeron, and Mitchell Belcher - © 2023 Institute for the Study of War and AEI's Critical Threats Project

* Assessed Russian advances are areas where ISW assesses Russian forces have operated in or launched attacks against but do not control.