

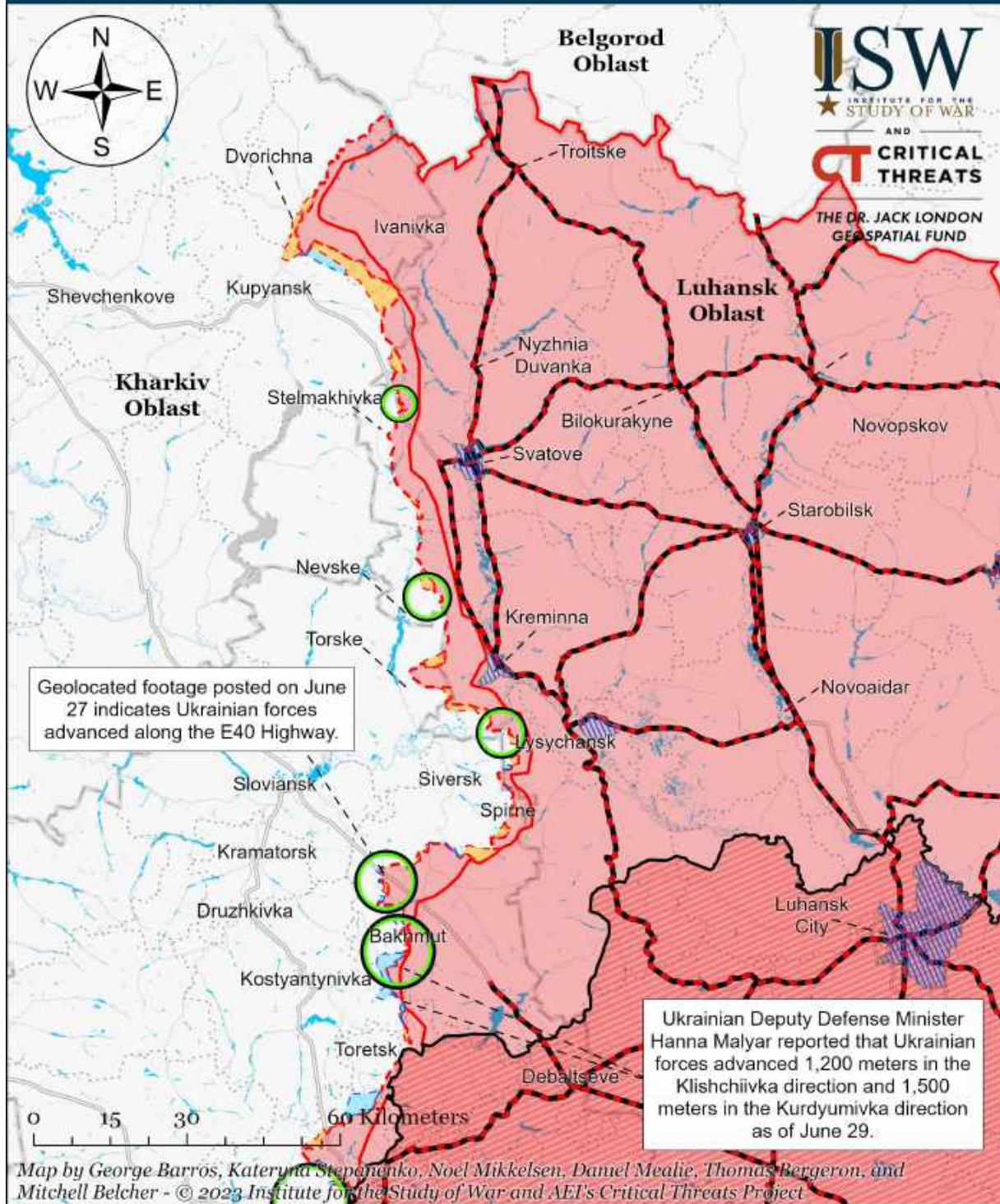
Assessed Control of Terrain in Ukraine and Main Russian Maneuver Axes as of July 1, 2023, 3:00 PM ET



Map by George Barros, Kateryna Stepanenko, Noel Mikkelsen, Daniel Mealie, Thomas Bergeron, and Mitchell Belcher - © 2023 Institute for the Study of War and AEI's Critical Threats Project

* Assessed Russian advances are areas where ISW assesses Russian forces have operated in or launched attacks against but do not control.

Assessed Control of Terrain Around Luhansk Oblast as of July 1, 2023, 3:00 PM ET

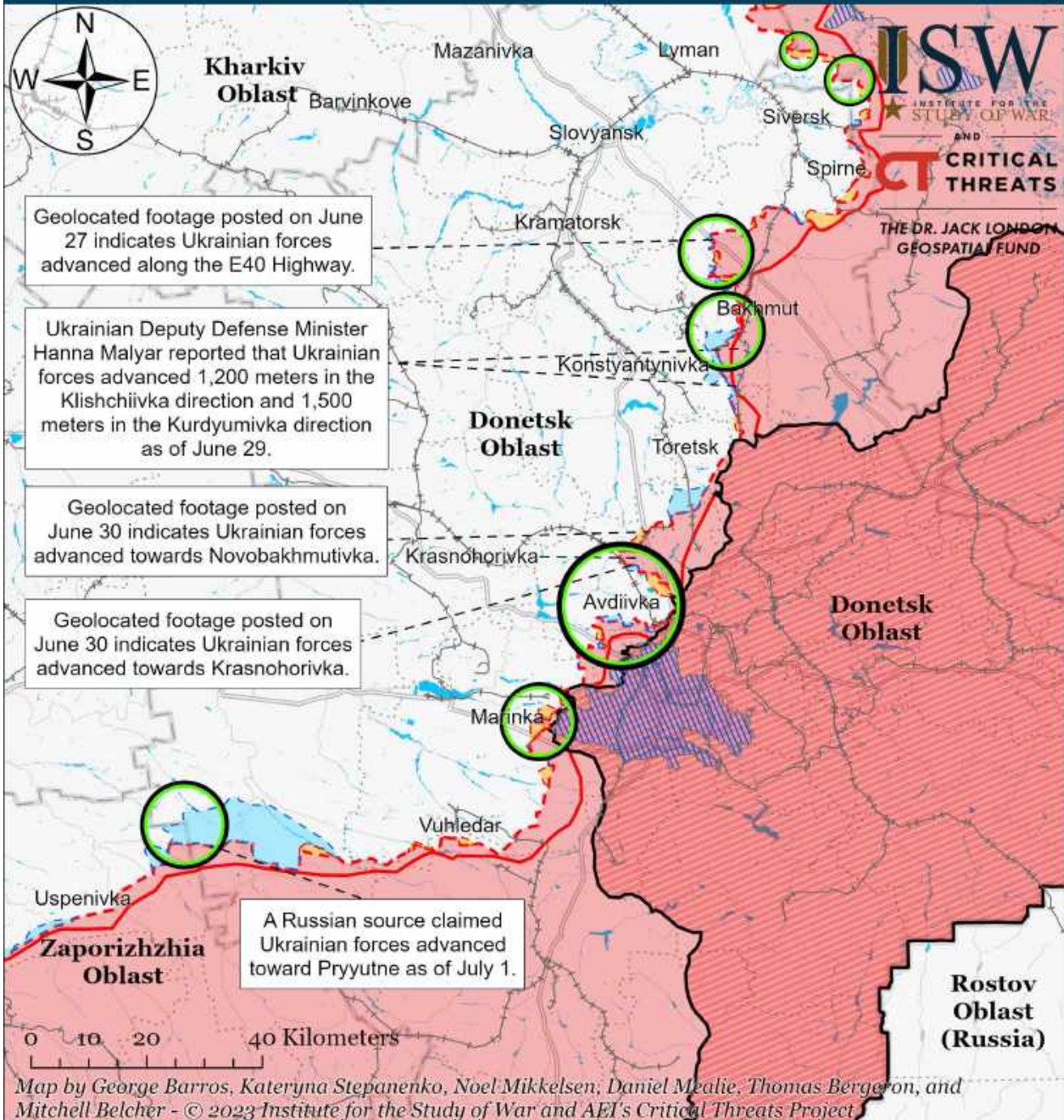


- | | | |
|---|--|-------------------------------------|
| Significant Fighting in the past 24 Hours | Assessed Russian Advances in Ukraine* | Claimed Ukrainian Counteroffensives |
| Russian Ground Lines of Communication | Assessed Russian-controlled Ukrainian Territory | Reported Ukrainian Partisan Warfare |
| Russian-controlled Ukrainian Territory before February 24 | Claimed Russian Control over Ukrainian Territory | |

* Assessed Russian advances are areas where ISW assesses Russian forces have operated in or launched attacks against but do not control.

Note: Ukrainian Deputy Defense Minister Hanna Malyar reported that Ukrainian forces advanced 1,200 meters in the Klishchiivka direction and 1,500 meters in the Kurdyumivka direction as of June 29. The Commander of the Ukrainian 57th Brigade Denys Yaroslavsky and a Russian source stated on June 29 that there is heavy fighting near Klishchiivka and Berkhivka. ISW is unable to confirm the geometry of this advance at this time.

Assessed Control of Terrain Around Donetsk as of July 1, 2023, 3:00 PM ET

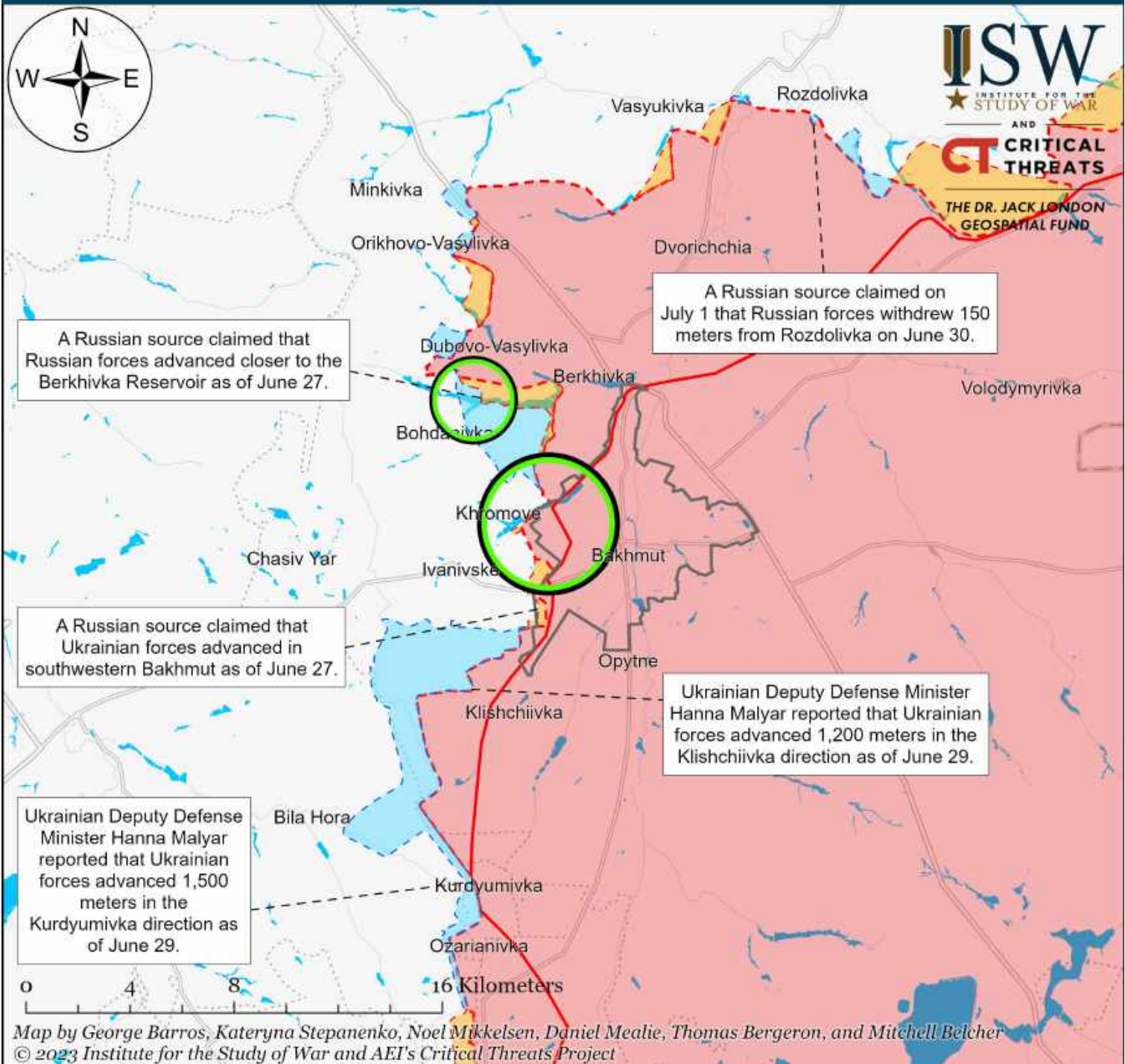


- Significant Fighting in the past 24 Hours
- Assessed Russian-controlled Ukrainian Territory
- Claimed Russian Control over Ukrainian Territory
- Assessed Russian Advances in Ukraine*
- Claimed Ukrainian Counteroffensives
- Reported Ukrainian Partisan Warfare
- Major Railroads

* Assessed Russian advances are areas where ISW assesses Russian forces have operated in or launched attacks against but do not control.

Note: Ukrainian Deputy Defense Minister Hanna Malyar reported that Ukrainian forces advanced 1,200 meters in the Klishchiivka direction, 1,500 meters in the Kurdyumivka direction, and 1,300 meters in the Berdyansk direction as of June 29. The Commander of the Ukrainian 57th Brigade Denys Yaroslavsky and a Russian source stated on June 29 that there is heavy fighting near Klishchiivka and Berkhivka. ISW is unable to confirm the geometry of this advance at this time.

Assessed Control of Terrain in Bakhmut as of July 1, 2023, 3:00 PM ET

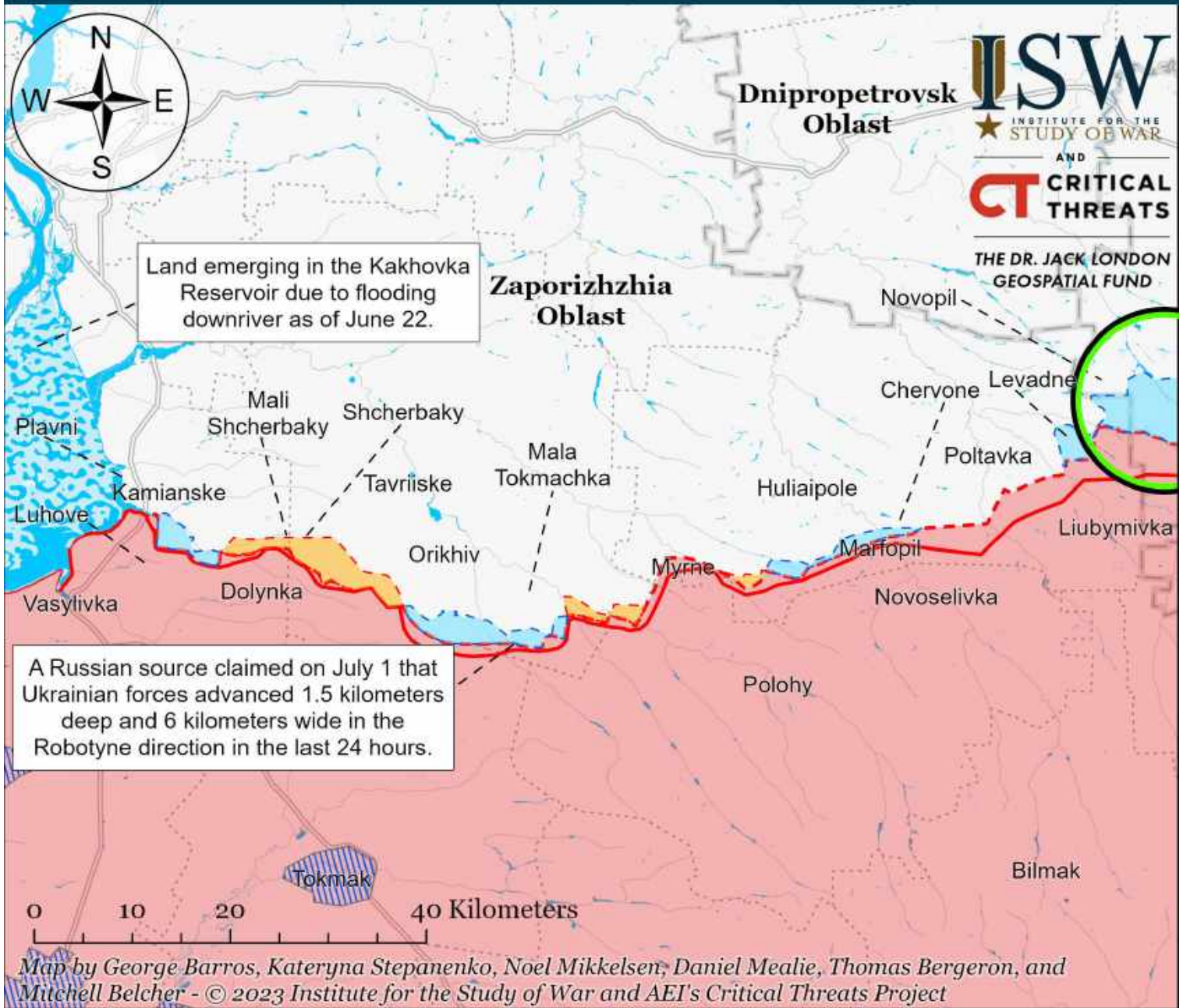


- Bakhmut City Limits
- Assessed Russian-controlled Ukrainian Territory
- Assessed Russian Advances in Ukraine*
- Claimed Ukrainian Counteroffensives
- Claimed Russian Control over Ukrainian Territory
- Reported Ukrainian Partisan Warfare

* Assessed Russian advances are areas where ISW assesses Russian forces have operated in or launched attacks against but do not control.

Note: Ukrainian Deputy Defense Minister Hanna Malyar reported that Ukrainian forces advanced 1,200 meters in the Klishchiivka direction and 1,500 meters in the Kurdyumivka direction as of June 29. The Commander of the Ukrainian 57th Brigade Denys Yaroslavsky and a Russian source stated on June 29 that there is heavy fighting near Klishchiivka and Berkhivka. ISW is unable to confirm the geometry of this advance at this time.

Assessed Control of Terrain Around Zaporizhzhia as of July 1, 2023, 3:00 PM ET

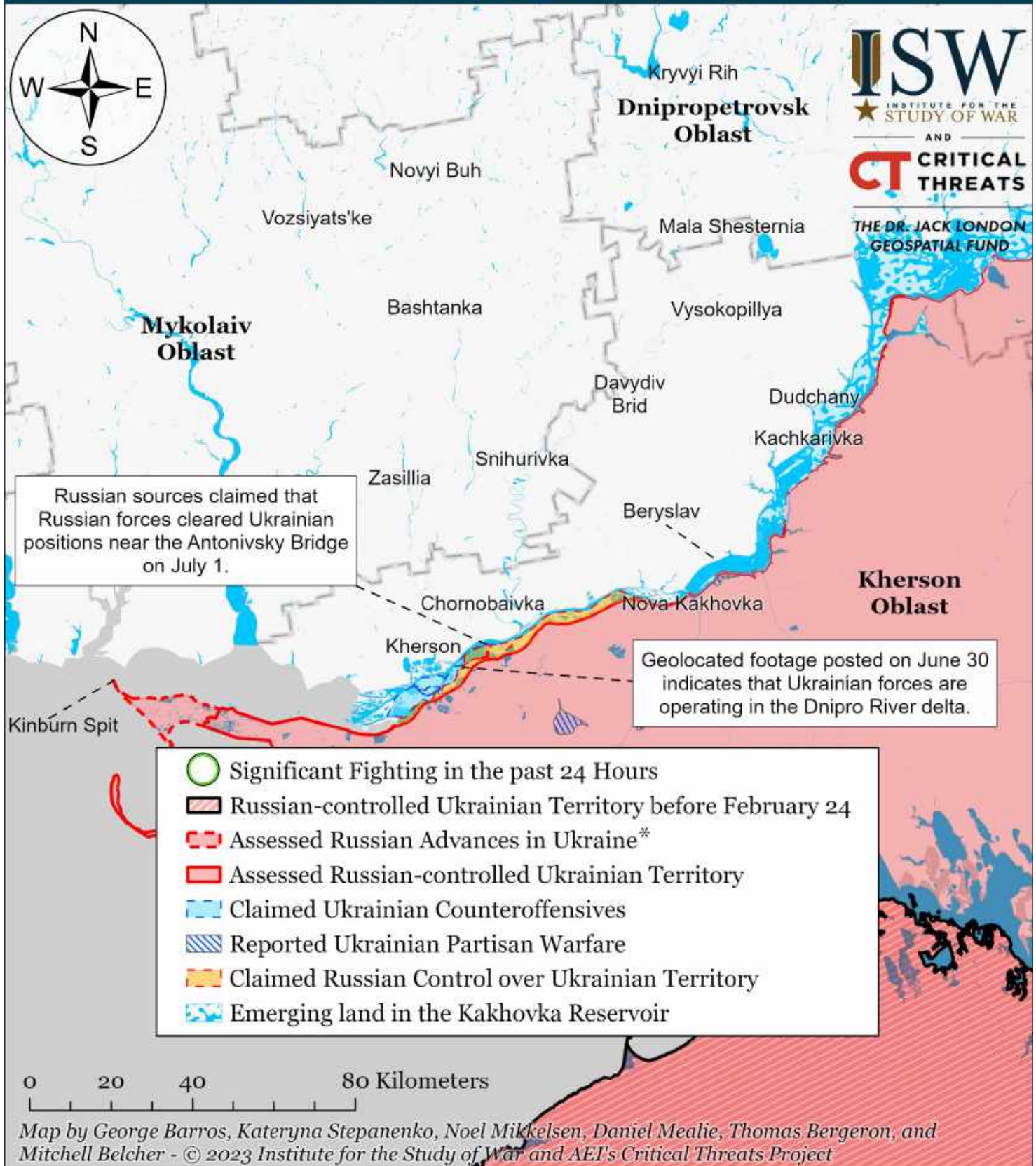


- Significant Fighting in the past 24 Hours
- Assessed Russian-controlled Ukrainian Territory
- Claimed Russian Control over Ukrainian Territory
- Emerging land in the Kakhovka Reservoir
- Assessed Russian Advances in Ukraine*
- Claimed Ukrainian Counteroffensives
- Reported Ukrainian Partisan Warfare

* Assessed Russian advances are areas where ISW assesses Russian forces have operated in or launched attacks against but do not control.

Note: Russian milblogger WarGonzo claimed on July 1 that Ukrainian forces advanced 1.5 kilometers deep and 6 kilometers wide in the Robotyne direction in the last 24 hours. ISW is unable to confirm the geometry of this advance at this time.

Assessed Control of Terrain Around Kherson and Mykolaiv as of July 1, 2023, 3:00 PM ET



Map by George Barros, Kateryna Stepanenko, Noel Mikkelsen, Daniel Mealie, Thomas Bergeron, and Mitchell Belcher - © 2023 Institute for the Study of War and AEI's Critical Threats Project

* Assessed Russian advances are areas where ISW assesses Russian forces have operated in or launched attacks against but do not control.

Note: The Ukrainian counteroffensive layer displays areas previously assigned to the Russian control, Russian advances, or Russian claims layers where ISW now assesses that Ukrainian forces have established a presence beyond a short-term raid. Inclusion of an area on this layer does not imply that ISW assesses that the area is part of any upcoming Ukrainian counteroffensive operation.

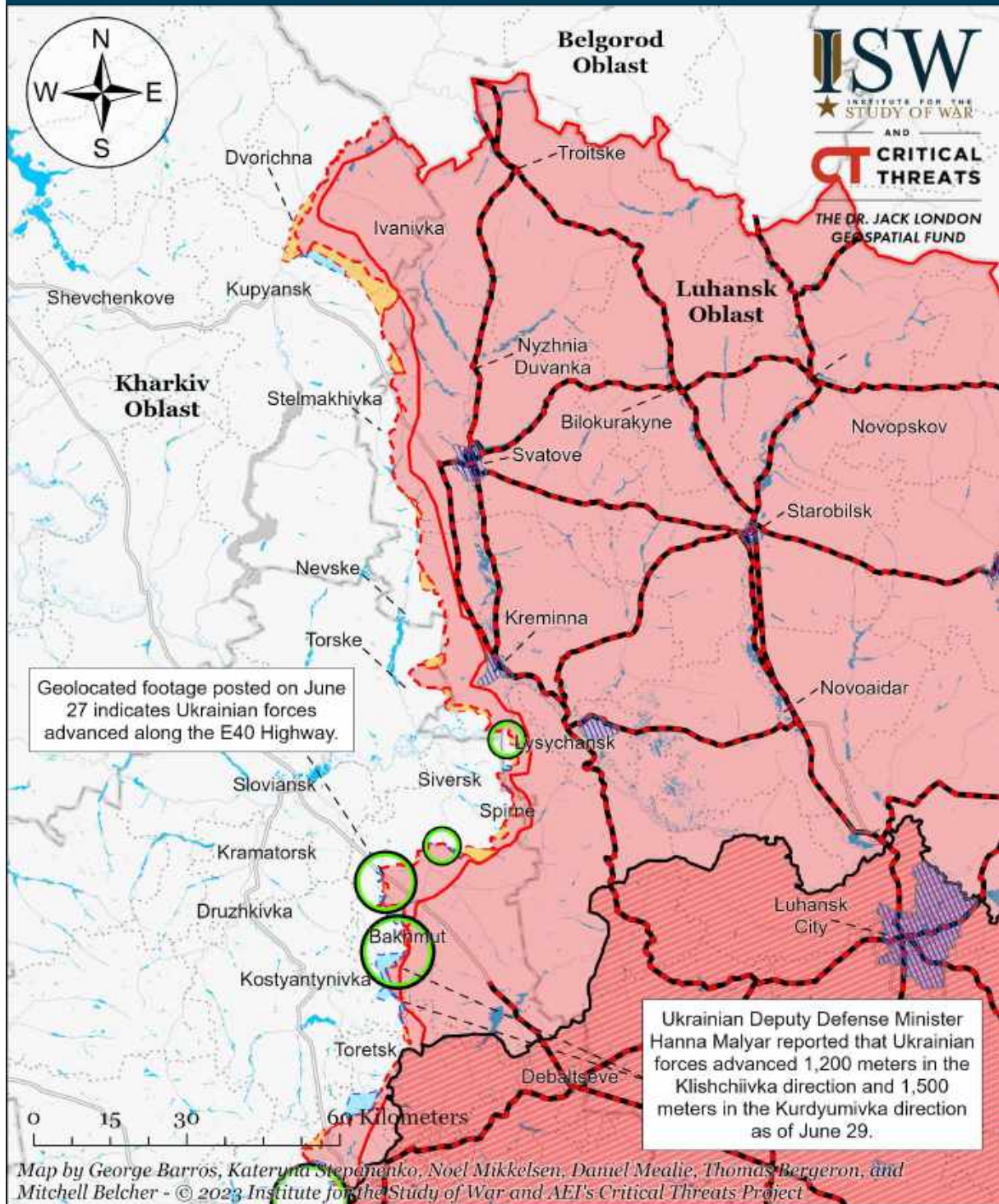
Assessed Control of Terrain in Ukraine and Main Russian Maneuver Axes as of June 30, 2023, 3:00 PM ET



Map by George Barros, Kateryna Stepanenko, Noel Mikkelsen, Daniel Mealie, Thomas Bergeron, and Mitchell Belcher - © 2023 Institute for the Study of War and AEI's Critical Threats Project

* Assessed Russian advances are areas where ISW assesses Russian forces have operated in or launched attacks against but do not control.

Assessed Control of Terrain Around Luhansk Oblast as of June 30, 2023, 3:00 PM ET

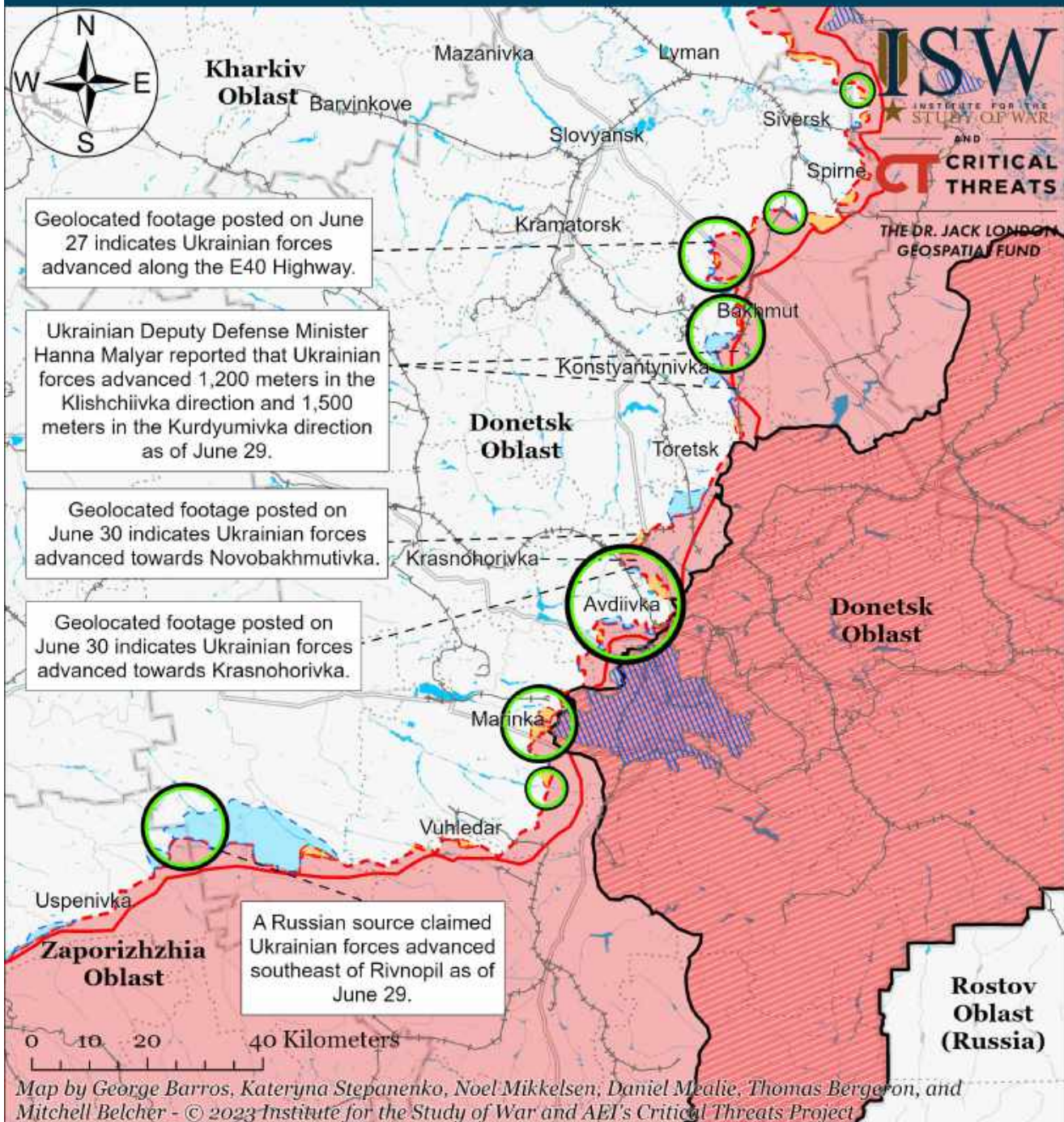


- Significant Fighting in the past 24 Hours
- - - Russian Ground Lines of Communication
- Russian-controlled Ukrainian Territory before February 24
- Assessed Russian Advances in Ukraine*
- Assessed Russian-controlled Ukrainian Territory
- Claimed Russian Control over Ukrainian Territory
- Claimed Ukrainian Counteroffensives
- Reported Ukrainian Partisan Warfare

* Assessed Russian advances are areas where ISW assesses Russian forces have operated in or launched attacks against but do not control.

Note: Ukrainian Deputy Defense Minister Hanna Malyar reported that Ukrainian forces advanced 1,200 meters in the Klishchiivka direction and 1,500 meters in the Kurdyumivka direction as of June 29. The Commander of the Ukrainian 57th Brigade Denys Yaroslavsky and a Russian source stated on June 29 that there is heavy fighting near Klishchiivka and Berkhivka. However, ISW cannot assess the exact areas of advances at this time.

Assessed Control of Terrain Around Donetsk as of June 30, 2023, 3:00 PM ET



- Significant Fighting in the past 24 Hours
- Assessed Russian-controlled Ukrainian Territory
- Russian-controlled Ukrainian Territory before February 24
- Assessed Russian Advances in Ukraine*
- Claimed Russian Control over Ukrainian Territory
- Claimed Ukrainian Counteroffensives
- Major Railroads
- Reported Ukrainian Partisan Warfare

* Assessed Russian advances are areas where ISW assesses Russian forces have operated in or launched attacks against but do not control.

Note: Ukrainian Deputy Defense Minister Hanna Malyar reported that Ukrainian forces advanced 1,200 meters in the Klishchiivka direction, 1,500 meters in the Kurdyumivka direction, and 1,300 meters in the Berdyansk direction as of June 29. The Commander of the Ukrainian 57th Brigade Denys Yaroslavsky and a Russian source stated on June 29 that there is heavy fighting near Klishchiivka and Berkhivka. However, ISW cannot assess the exact areas of advances at this time.

Assessed Control of Terrain in Bakhmut as of June 30, 2023, 3:00 PM ET



A Russian source claimed that Russian forces advanced closer to the Berkhivka Reservoir as of June 27.

A Russian source claimed that Ukrainian forces advanced in southwestern Bakhmut as of June 27.

Ukrainian Deputy Defense Minister Hanna Malyar reported that Ukrainian forces advanced 1,200 meters in the Klishchiivka direction as of June 29.

Ukrainian Deputy Defense Minister Hanna Malyar reported that Ukrainian forces advanced 1,500 meters in the Kurdyumivka direction as of June 29.

0 4 8 16 Kilometers

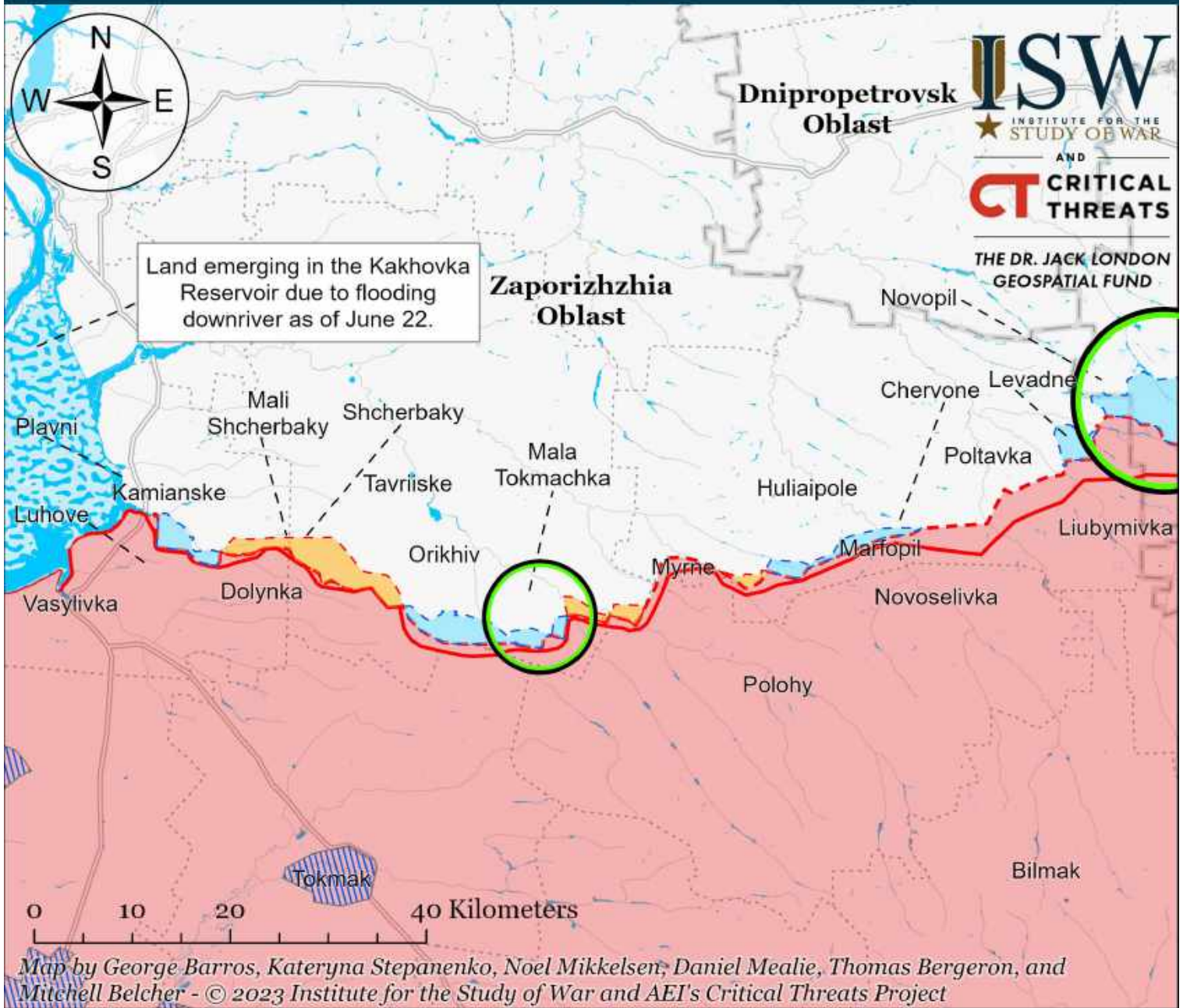
Map by George Barros, Kateryna Stepanenko, Noel Mikkelsen, Daniel Mealie, Thomas Bergeron, and Mitchell Belcher © 2023 Institute for the Study of War and AEI's Critical Threats Project

- Bakhmut City Limits
- Assessed Russian-controlled Ukrainian Territory
- Assessed Russian Advances in Ukraine*
- Claimed Ukrainian Counteroffensives
- Claimed Russian Control over Ukrainian Territory
- Reported Ukrainian Partisan Warfare

* Assessed Russian advances are areas where ISW assesses Russian forces have operated in or launched attacks against but do not control.

Note: Ukrainian Deputy Defense Minister Hanna Malyar reported that Ukrainian forces advanced 1,200 meters in the Klishchiivka direction and 1,500 meters in the Kurdyumivka direction as of June 29. The Commander of the Ukrainian 57th Brigade Denys Yaroslavsky and a Russian source stated on June 29 that there is heavy fighting near Klishchiivka and Berkhivka. However, ISW cannot assess the exact areas of advances at this time.

Assessed Control of Terrain Around Zaporizhzhia as of June 30, 2023, 3:00 PM ET



ISW
INSTITUTE FOR THE
STUDY OF WAR
AND
CT CRITICAL
THREATS
THE DR. JACK LONDON
GEOSPATIAL FUND

- Significant Fighting in the past 24 Hours
- Assessed Russian-controlled Ukrainian Territory
- Claimed Russian Control over Ukrainian Territory
- Assessed Russian Advances in Ukraine*
- Reported Ukrainian Partisan Warfare
- Emerging land in the Kakhovka Reservoir
- Claimed Ukrainian Counteroffensives

* Assessed Russian advances are areas where ISW assesses Russian forces have operated in or launched attacks against but do not control.

Note: Ukrainian Deputy Defense Minister Hanna Malyar claimed on June 26 that Ukrainian forces recaptured 17 square kilometers in the past week and 130 square kilometers since the start of the counteroffensive.

Assessed Control of Terrain Around Kherson and Mykolaiv as of June 30, 2023, 3:00 PM ET



* Assessed Russian advances are areas where ISW assesses Russian forces have operated in or launched attacks against but do not control.

Note: The Ukrainian counteroffensive layer displays areas previously assigned to the Russian control, Russian advances, or Russian claims layers where ISW now assesses that Ukrainian forces have established a presence beyond a short-term raid. Inclusion of an area on this layer does not imply that ISW assesses that the area is part of any upcoming Ukrainian counteroffensive operation.

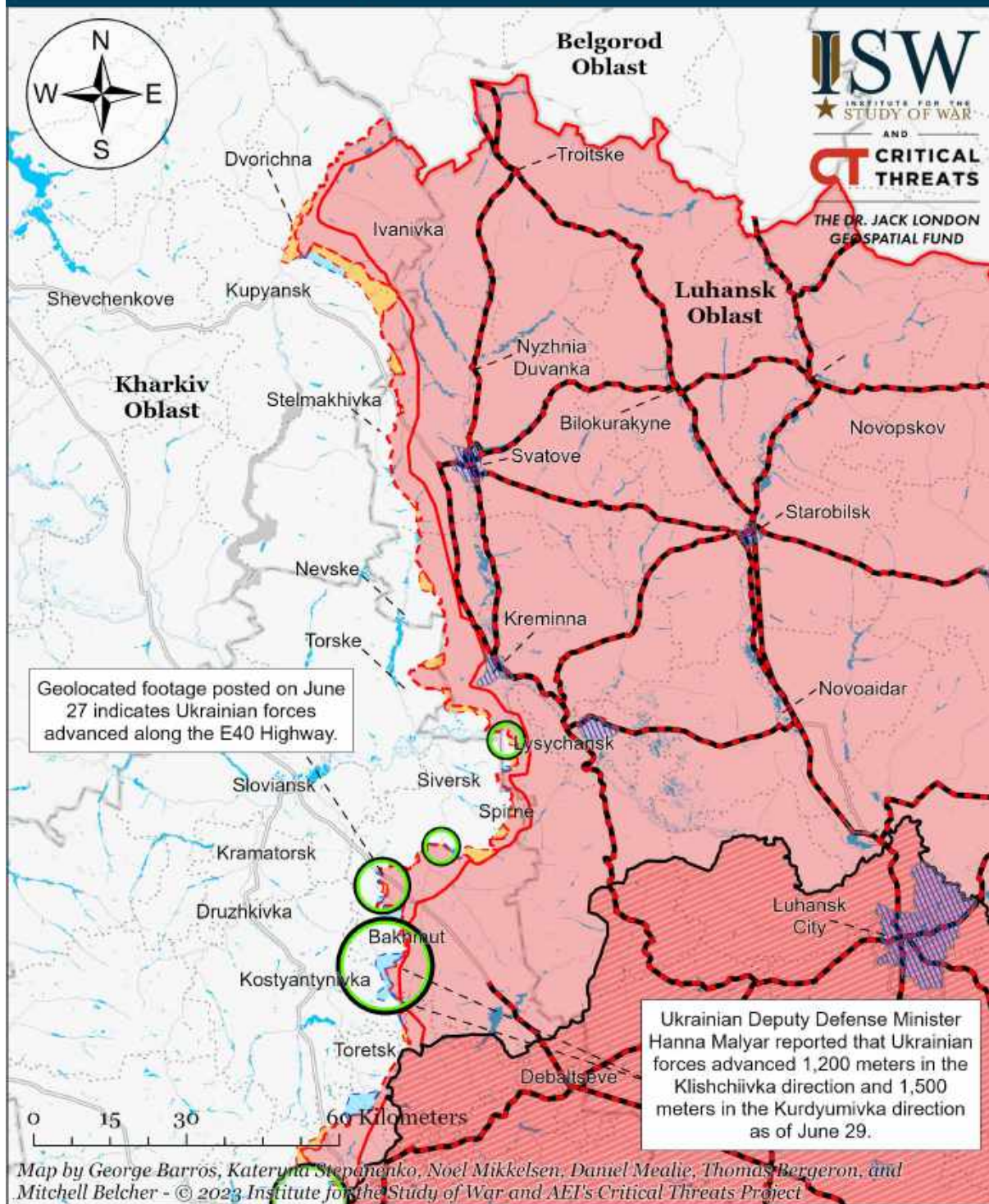
Assessed Control of Terrain in Ukraine and Main Russian Maneuver Axes as of June 29, 2023, 3:00 PM ET



Map by George Barros, Kateryna Stepanenko, Noel Mikkelsen, Daniel Mealie, Thomas Bergeron, and Mitchell Belcher - © 2023 Institute for the Study of War and AEI's Critical Threats Project

* Assessed Russian advances are areas where ISW assesses Russian forces have operated in or launched attacks against but do not control.

Assessed Control of Terrain Around Luhansk Oblast as of June 29, 2023, 3:00 PM ET

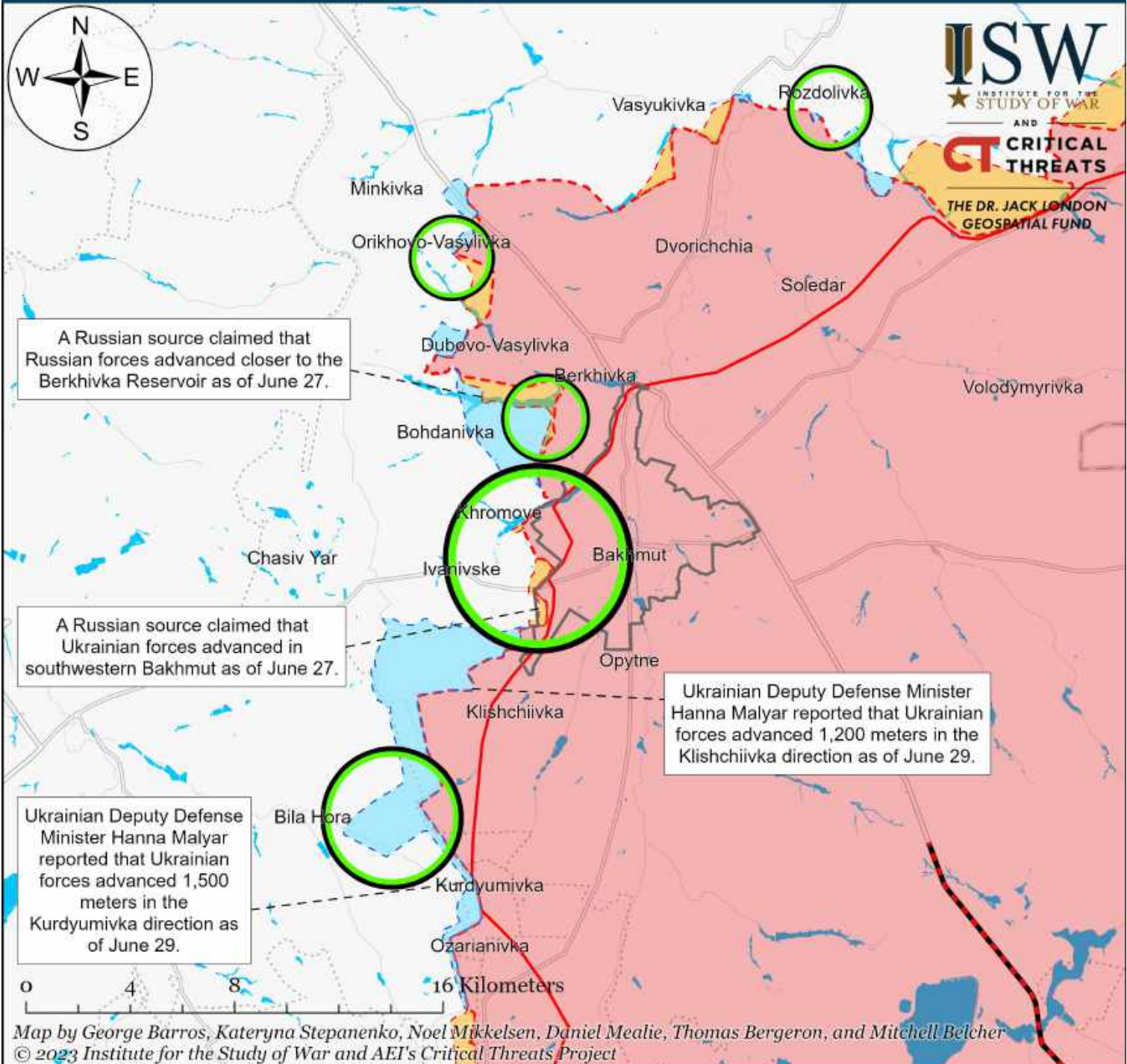


- Significant Fighting in the past 24 Hours
- - - Russian Ground Lines of Communication
- Russian-controlled Ukrainian Territory before February 24
- Assessed Russian Advances in Ukraine*
- Assessed Russian-controlled Ukrainian Territory
- Claimed Russian Control over Ukrainian Territory
- Claimed Ukrainian Counteroffensives
- Reported Ukrainian Partisan Warfare

* Assessed Russian advances are areas where ISW assesses Russian forces have operated in or launched attacks against but do not control.

Note: Ukrainian Deputy Defense Minister Hanna Malyar reported that Ukrainian forces advanced 1,200 meters in the Klishchiivka direction and 1,500 meters in the Kurdyumivka direction as of June 29. The Commander of the Ukrainian 57th Brigade Denys Yaroslavsky and a Russian source stated on June 29 that there is heavy fighting near Klishchiivka and Berkhivka. However, ISW cannot assess the exact areas of advances at this time.

Assessed Control of Terrain in Bakhmut as of June 29, 2023, 3:00 PM ET



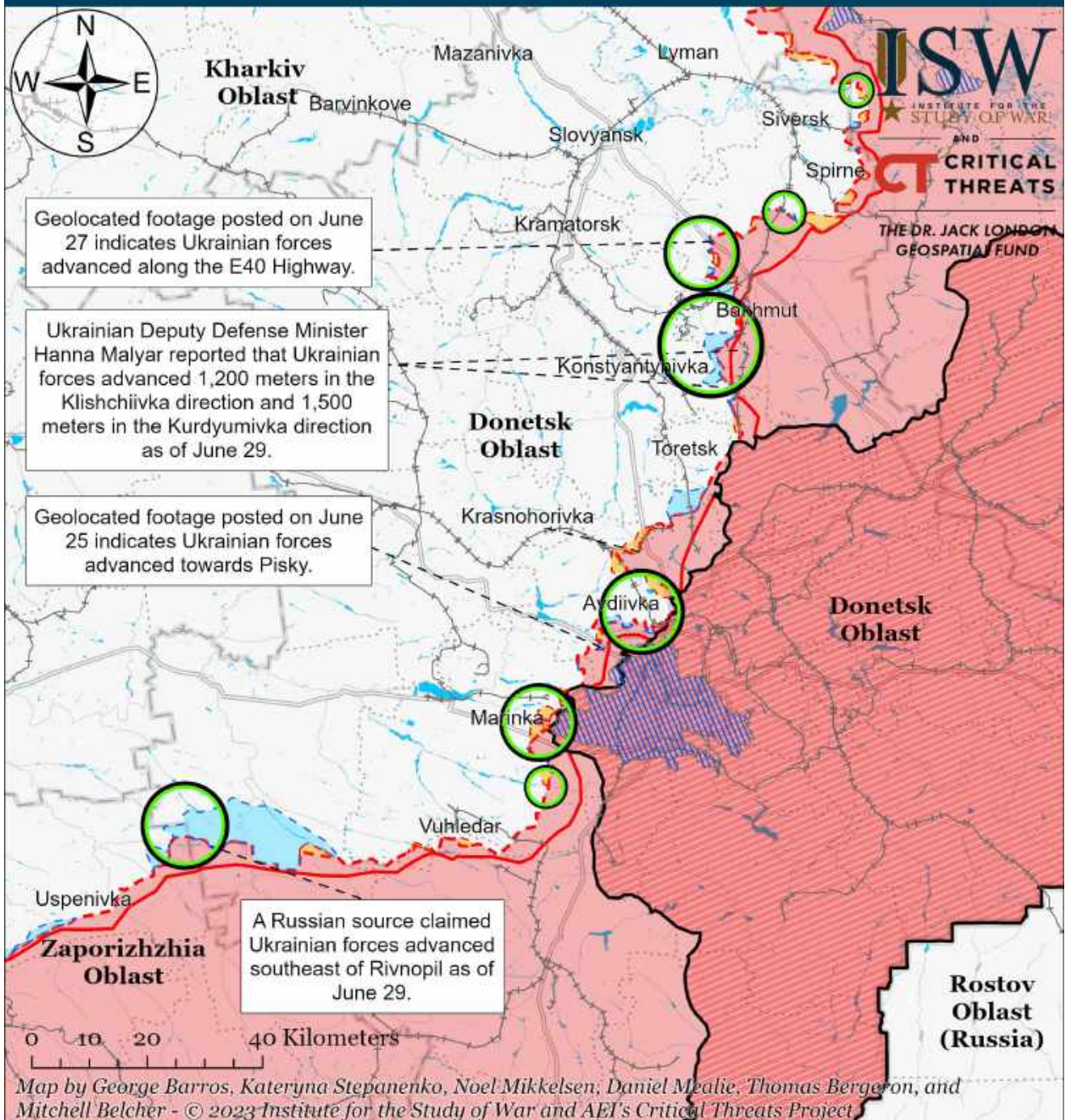
Map by George Barros, Kateryna Stepanenko, Noel Mikkelsen, Daniel Mealie, Thomas Bergeron, and Mitchell Belcher
 © 2023 Institute for the Study of War and AEI's Critical Threats Project

- Bakhmut City Limits
- ▭ Assessed Russian-controlled Ukrainian Territory
- ▭ Claimed Ukrainian Counteroffensives
- ▭ Assessed Russian Advances in Ukraine*
- ▭ Claimed Russian Control over Ukrainian Territory
- ▭ Reported Ukrainian Partisan Warfare

* Assessed Russian advances are areas where ISW assesses Russian forces have operated in or launched attacks against but do not control.

Note: Ukrainian Deputy Defense Minister Hanna Malyar reported that Ukrainian forces advanced 1,200 meters in the Klishchiivka direction and 1,500 meters in the Kurdyumivka direction as of June 29. The Commander of the Ukrainian 57th Brigade Denys Yaroslavsky and a Russian source stated on June 29 that there is heavy fighting near Klishchiivka and Berkhivka. However, ISW cannot assess the exact areas of advances at this time.

Assessed Control of Terrain Around Donetsk as of June 29, 2023, 3:00 PM ET

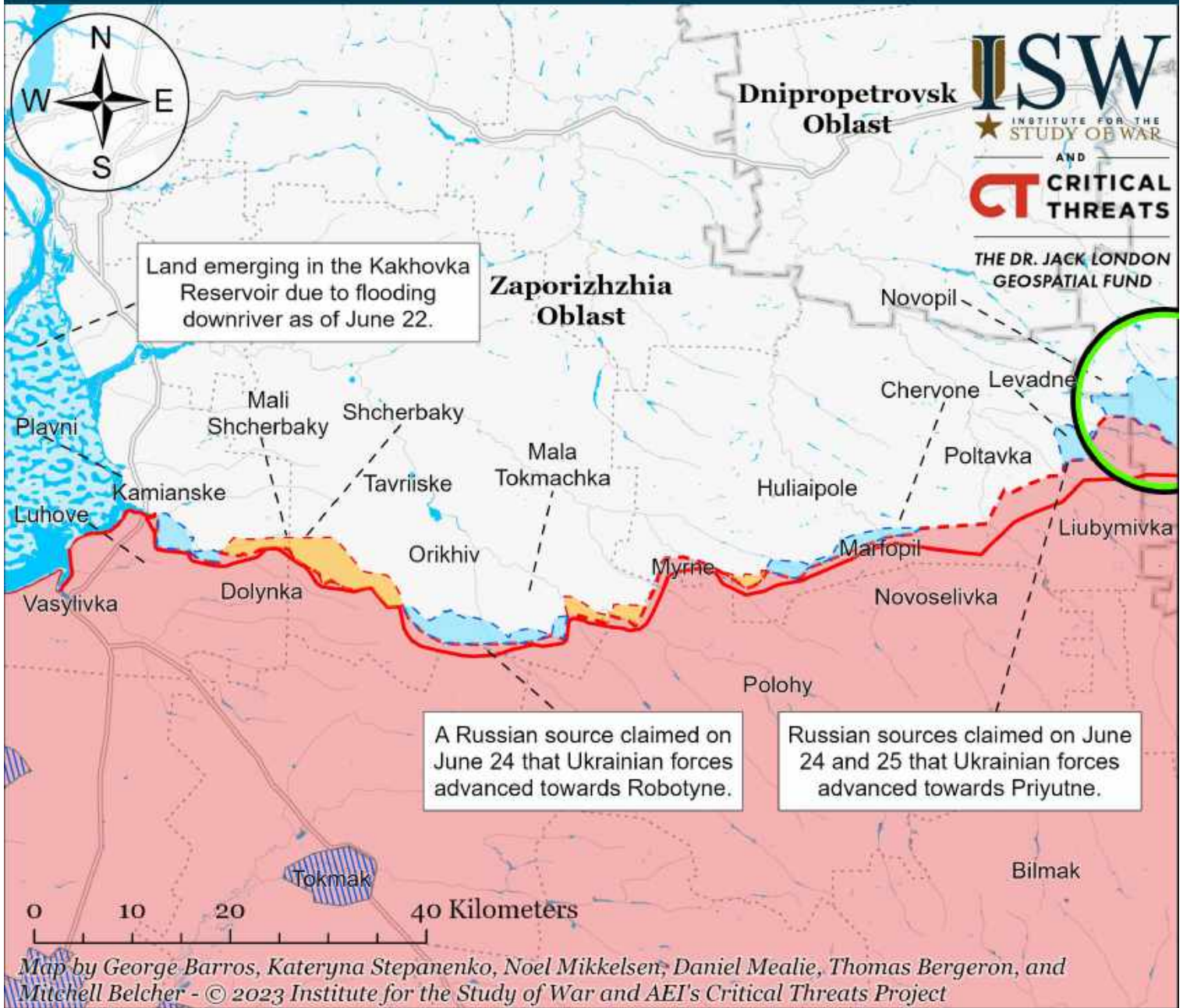


- Significant Fighting in the past 24 Hours
- Assessed Russian-controlled Ukrainian Territory
- Claimed Russian Control over Ukrainian Territory
- Assessed Russian Advances in Ukraine*
- Claimed Ukrainian Counteroffensives
- Reported Ukrainian Partisan Warfare
- Major Railroads

* Assessed Russian advances are areas where ISW assesses Russian forces have operated in or launched attacks against but do not control.

Note: Ukrainian Deputy Defense Minister Hanna Malyar reported that Ukrainian forces advanced 1,200 meters in the Klishchiivka direction, 1,500 meters in the Kurdyumivka direction, and 1,300 meters in the Berdyansk direction as of June 29. The Commander of the Ukrainian 57th Brigade Denys Yaroslavsky and a Russian source stated on June 29 that there is heavy fighting near Klishchiivka and Berkhivka. However, ISW cannot assess the exact areas of advances at this time.

Assessed Control of Terrain Around Zaporizhia as of June 29, 2023, 3:00 PM ET

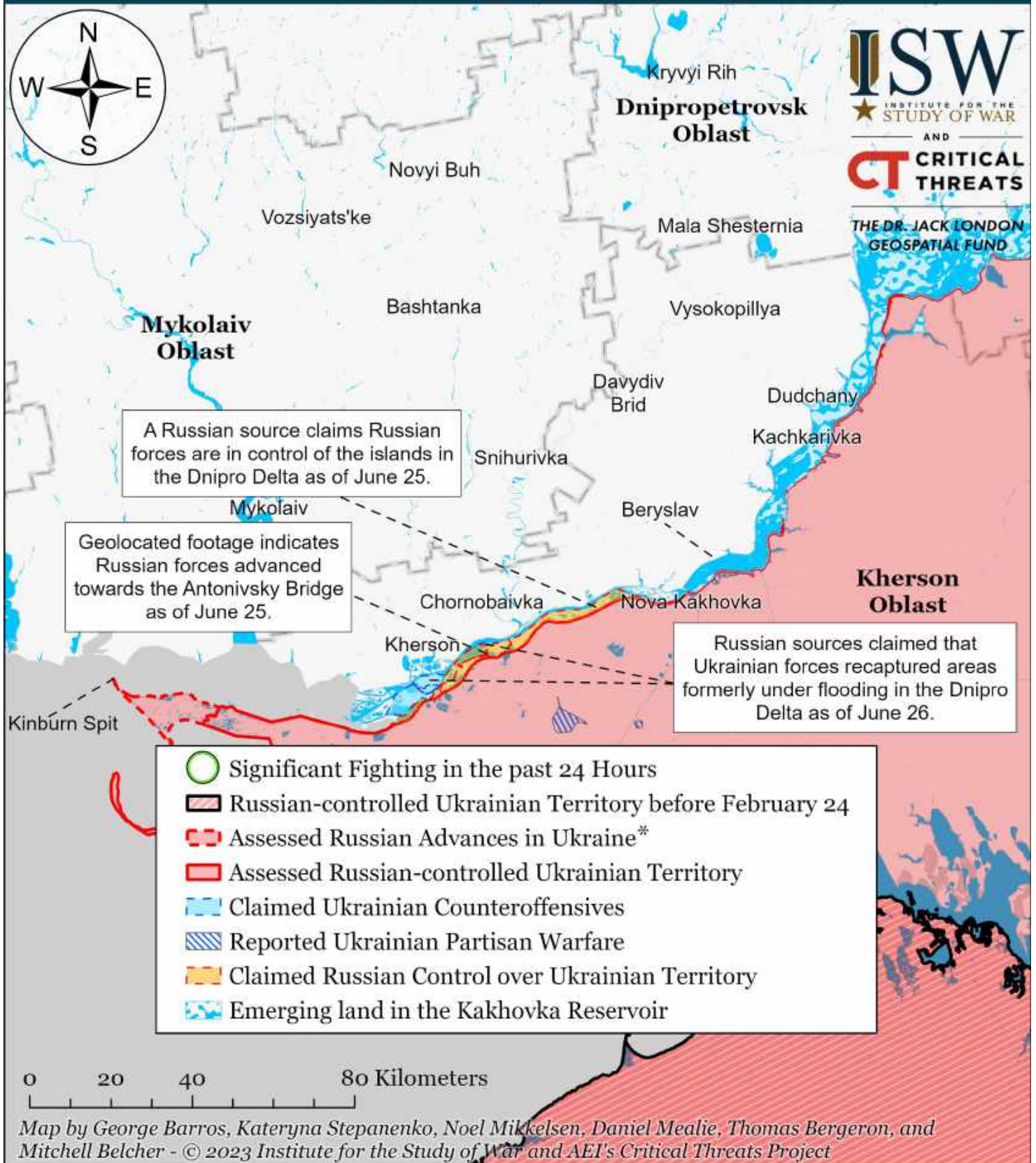


-  Significant Fighting in the past 24 Hours
-  Assessed Russian-controlled Ukrainian Territory
-  Reported Ukrainian Partisan Warfare
-  Russian-controlled Ukrainian Territory before February 24
-  Claimed Russian Control over Ukrainian Territory
-  Emerging land in the Kakhovka Reservoir
-  Assessed Russian Advances in Ukraine*
-  Claimed Ukrainian Counteroffensives

* Assessed Russian advances are areas where ISW assesses Russian forces have operated in or launched attacks against but do not control.

Note: Ukrainian Deputy Defense Minister Hanna Malyar claimed on June 26 that Ukrainian forces recaptured 17 square kilometers in the past week and 130 square kilometers since the start of the counteroffensive.

Assessed Control of Terrain Around Kherson and Mykolaiv as of June 29, 2023, 3:00 PM ET



* Assessed Russian advances are areas where ISW assesses Russian forces have operated in or launched attacks against but do not control.

Note: The Ukrainian counteroffensive layer displays areas previously assigned to the Russian control, Russian advances, or Russian claims layers where ISW now assesses that Ukrainian forces have established a presence beyond a short-term raid. Inclusion of an area on this layer does not imply that ISW assesses that the area is part of any upcoming Ukrainian counteroffensive operation.

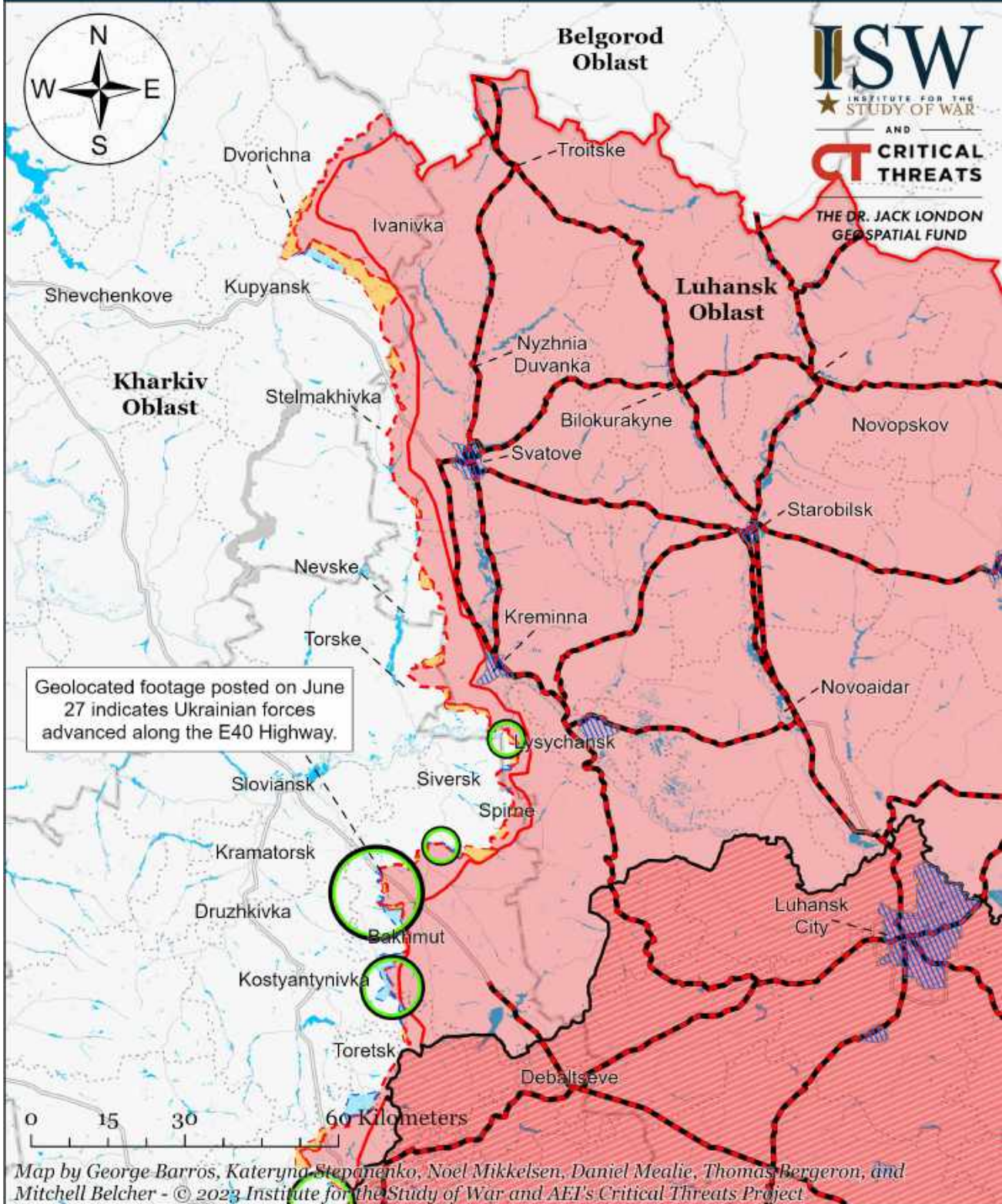
Assessed Control of Terrain in Ukraine and Main Russian Maneuver Axes as of June 28, 2023, 3:00 PM ET



Map by George Barros, Kateryna Stepanenko, Noel Mikkelsen, Daniel Mealie, Thomas Bergeron, and Mitchell Belcher - © 2023 Institute for the Study of War and AEI's Critical Threats Project

* Assessed Russian advances are areas where ISW assesses Russian forces have operated in or launched attacks against but do not control.

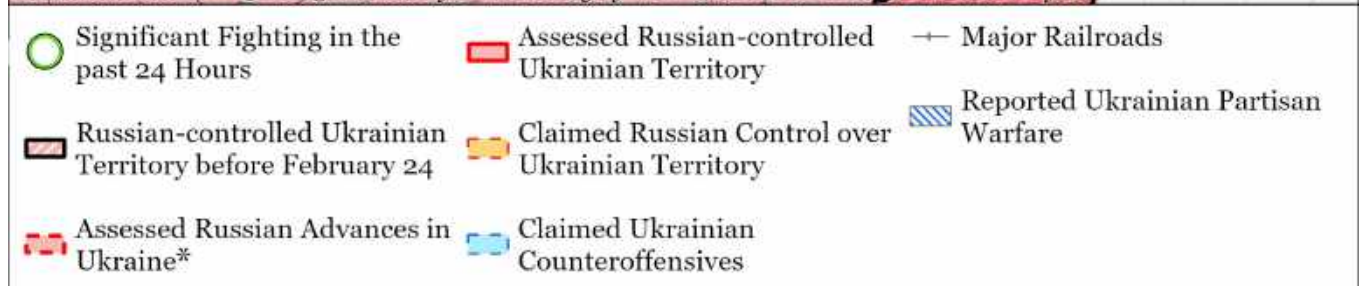
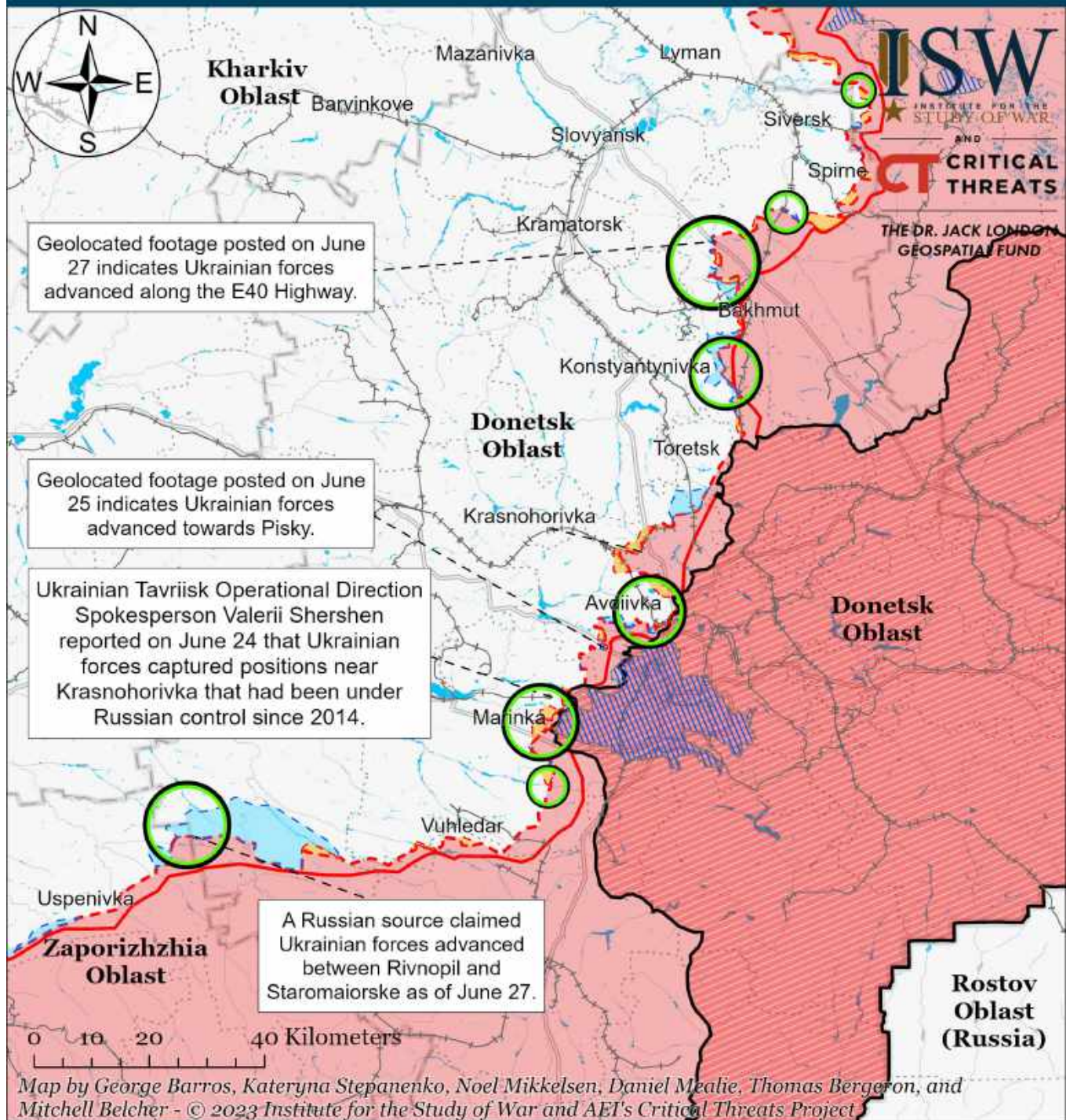
Assessed Control of Terrain Around Luhansk Oblast as of June 28, 2023, 3:00 PM ET



- Significant Fighting in the past 24 Hours
- Russian Ground Lines of Communication
- Russian-controlled Ukrainian Territory before February 24
- Assessed Russian Advances in Ukraine*
- Assessed Russian-controlled Ukrainian Territory
- Claimed Russian Control over Ukrainian Territory
- Claimed Ukrainian Counteroffensives
- Reported Ukrainian Partisan Warfare

* Assessed Russian advances are areas where ISW assesses Russian forces have operated in or launched attacks against but do not control.

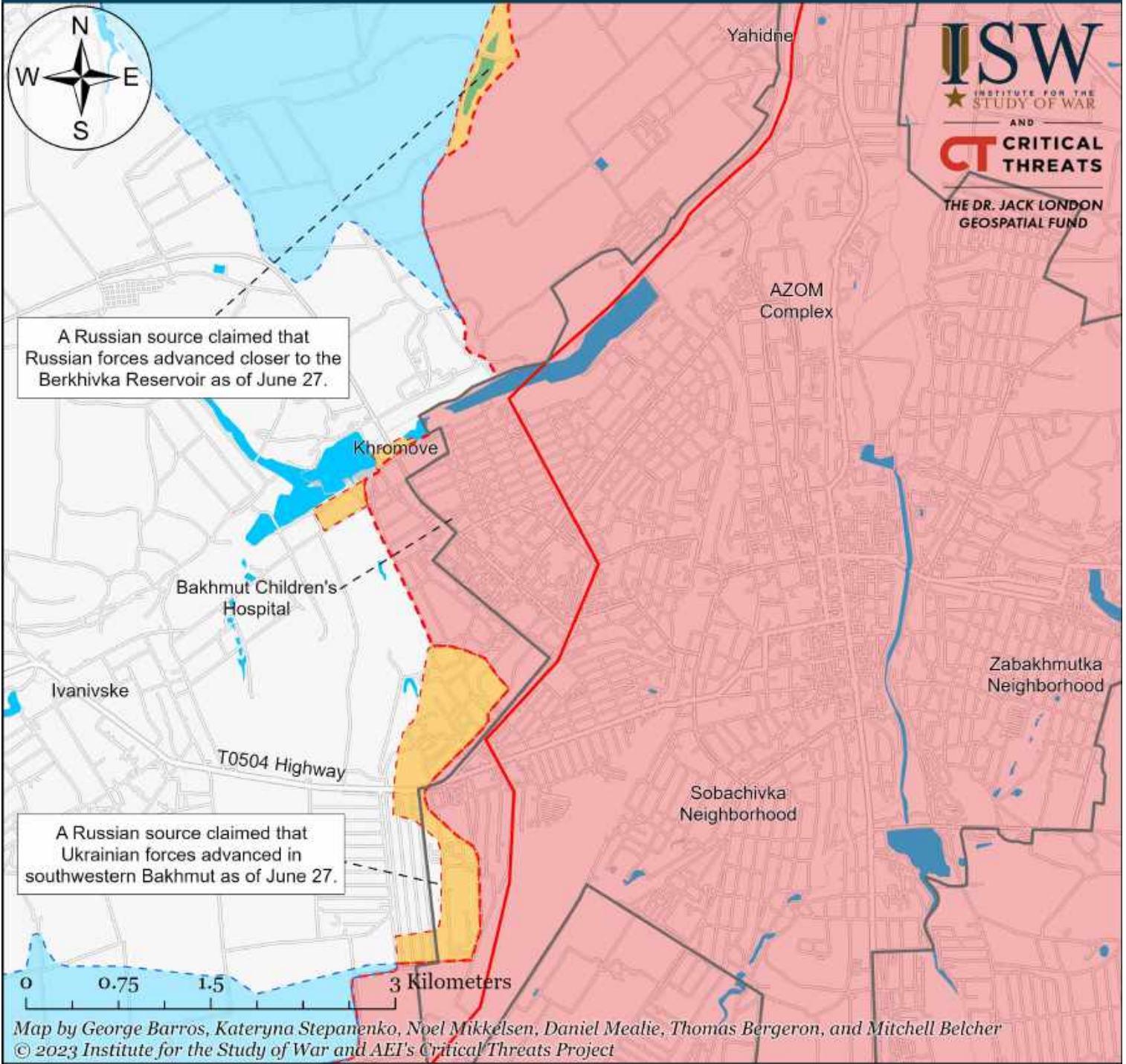
Assessed Control of Terrain Around Donetsk as of June 28, 2023, 3:00 PM ET



* Assessed Russian advances are areas where ISW assesses Russian forces have operated in or launched attacks against but do not control.

Note: Ukrainian Tavriisk Operational Direction Spokesperson Valerii Shershen reported on June 24 that Ukrainian forces captured positions near Krasnohorivka that had been under Russian control since 2014. ISW cannot assess the exact areas of advances at this time due to a lack of sufficient evidence.

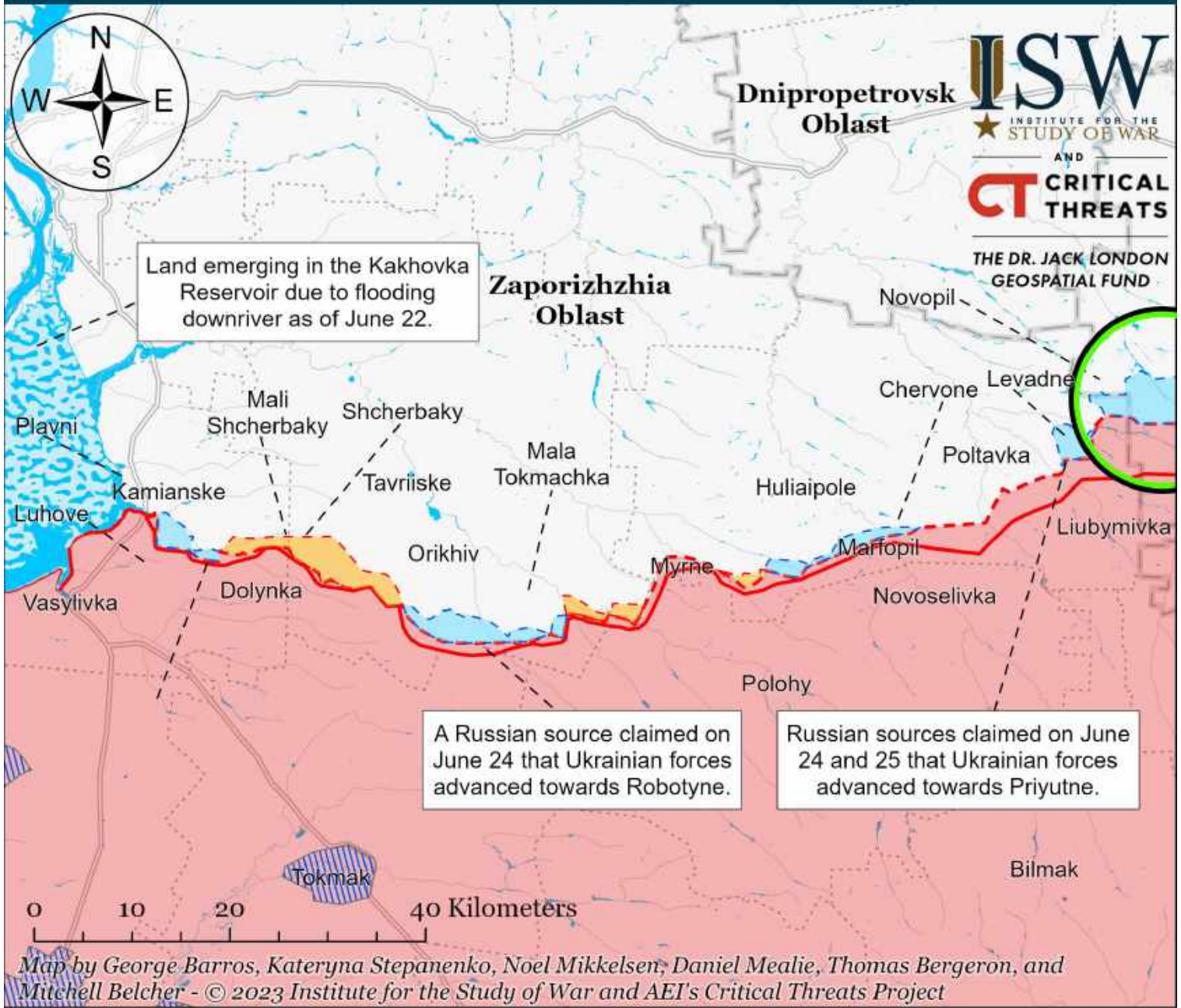
Assessed Control of Terrain in Bakhmut as of June 28, 2023, 3:00 PM ET



- Bakhmut City Limits
- Assessed Russian-controlled Ukrainian Territory
- Assessed Russian Advances in Ukraine*
- Claimed Russian Control over Ukrainian Territory
- Claimed Ukrainian Counteroffensives
- Reported Ukrainian Partisan Warfare

* Assessed Russian advances are areas where ISW assesses Russian forces have operated in or launched attacks against but do not control.

Assessed Control of Terrain Around Zaporizhzhia as of June 28, 2023, 3:00 PM ET

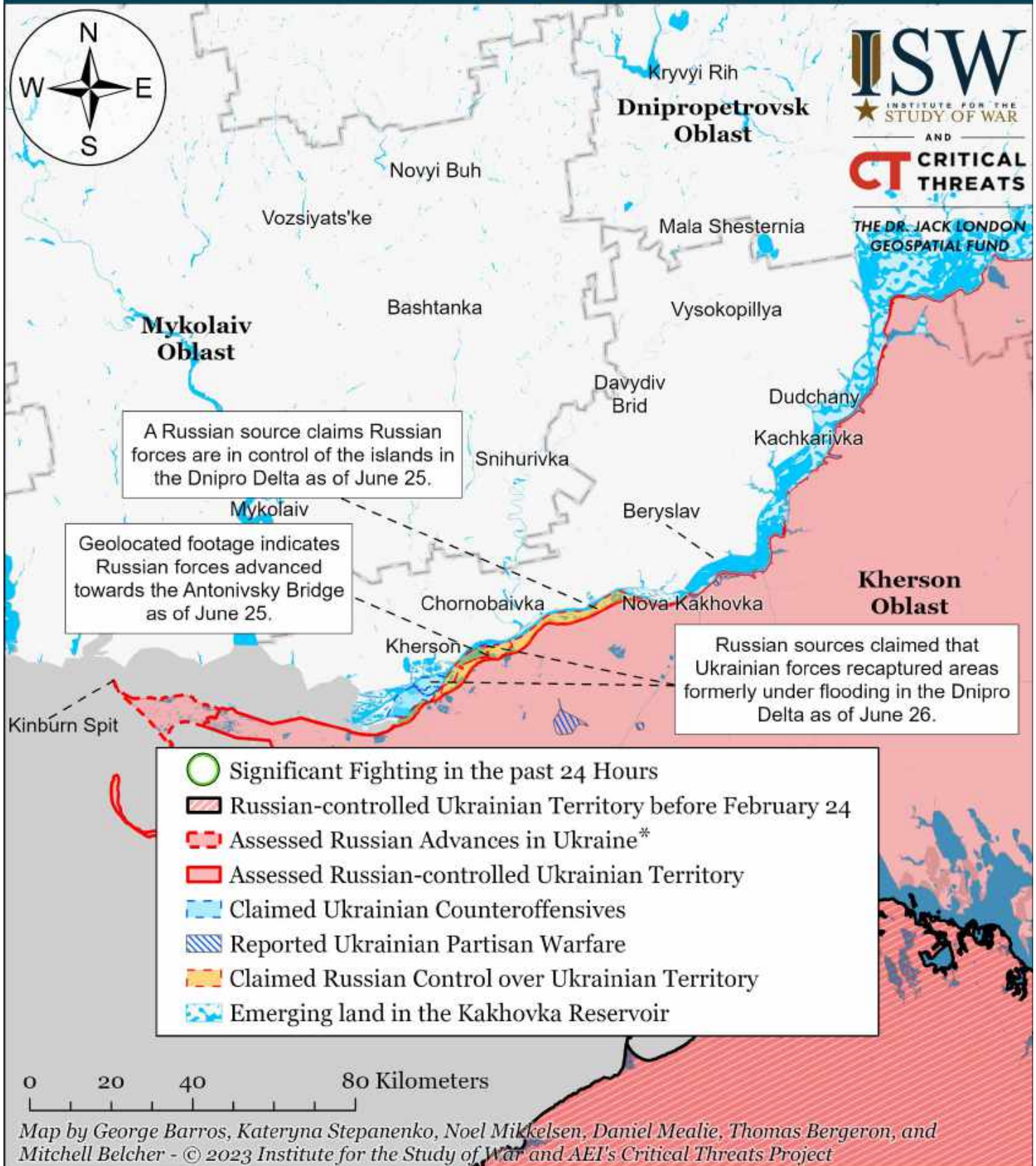


-  Significant Fighting in the past 24 Hours
-  Assessed Russian-controlled Ukrainian Territory
-  Reported Ukrainian Partisan Warfare
-  Russian-controlled Ukrainian Territory before February 24
-  Claimed Russian Control over Ukrainian Territory
-  Emerging land in the Kakhovka Reservoir
-  Assessed Russian Advances in Ukraine*
-  Claimed Ukrainian Counteroffensives

* Assessed Russian advances are areas where ISW assesses Russian forces have operated in or launched attacks against but do not control.

Note: Ukrainian Deputy Defense Minister Hanna Malyar claimed on June 26 that Ukrainian forces recaptured 17 square kilometers in the past week and 130 square kilometers since the start of the counteroffensive.

Assessed Control of Terrain Around Kherson and Mykolaiv as of June 28, 2023, 3:00 PM ET



* Assessed Russian advances are areas where ISW assesses Russian forces have operated in or launched attacks against but do not control.

Note: The Ukrainian counteroffensive layer displays areas previously assigned to the Russian control, Russian advances, or Russian claims layers where ISW now assesses that Ukrainian forces have established a presence beyond a short-term raid. Inclusion of an area on this layer does not imply that ISW assesses that the area is part of any upcoming Ukrainian counteroffensive operation.

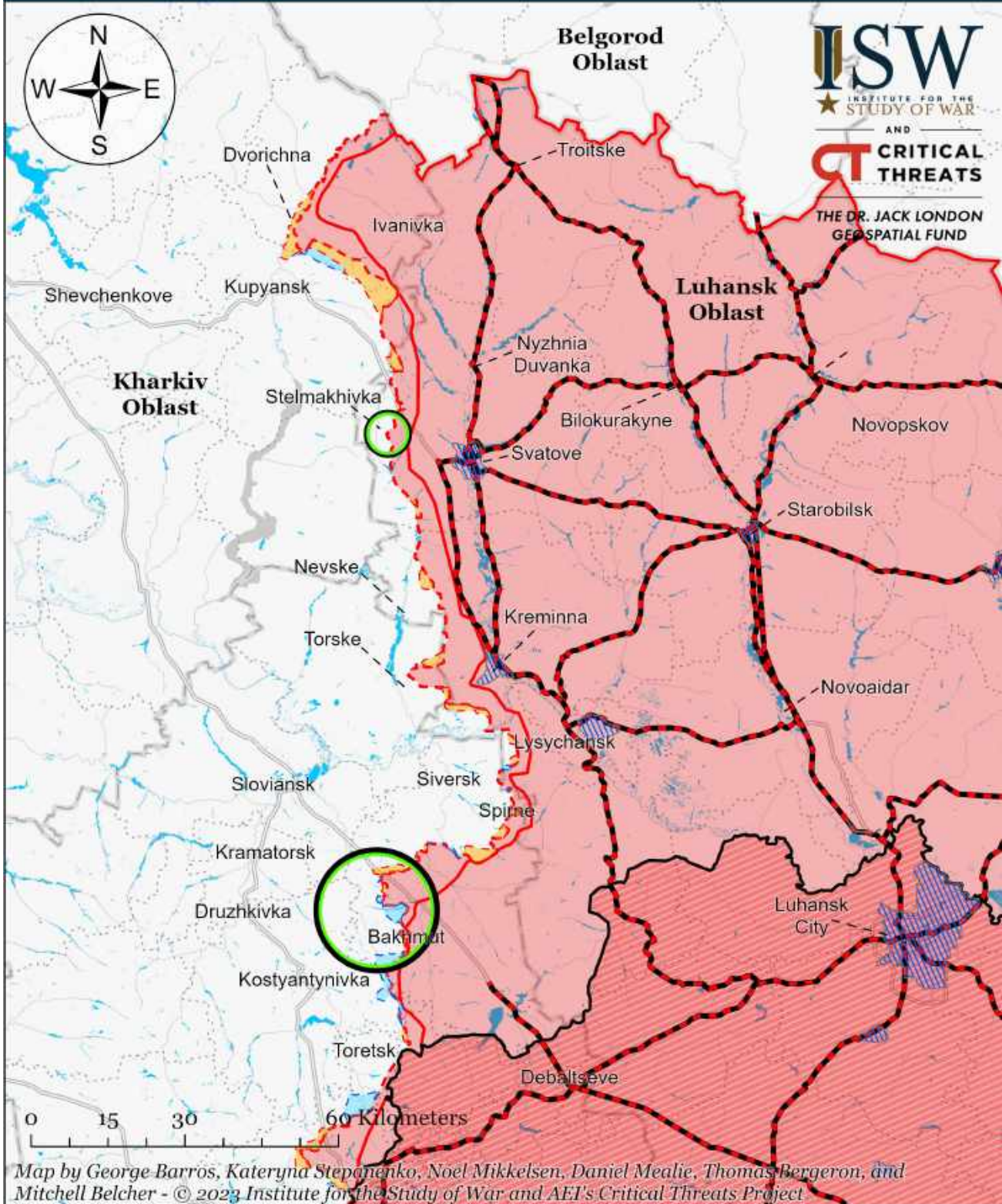
Assessed Control of Terrain in Ukraine and Main Russian Maneuver Axes as of June 27, 2023, 3:00 PM ET



Map by George Barros, Kateryna Stepanenko, Noel Mikkelsen, Daniel Mealie, Thomas Bergeron, and Mitchell Belcher - © 2023 Institute for the Study of War and AEI's Critical Threats Project

* Assessed Russian advances are areas where ISW assesses Russian forces have operated in or launched attacks against but do not control.

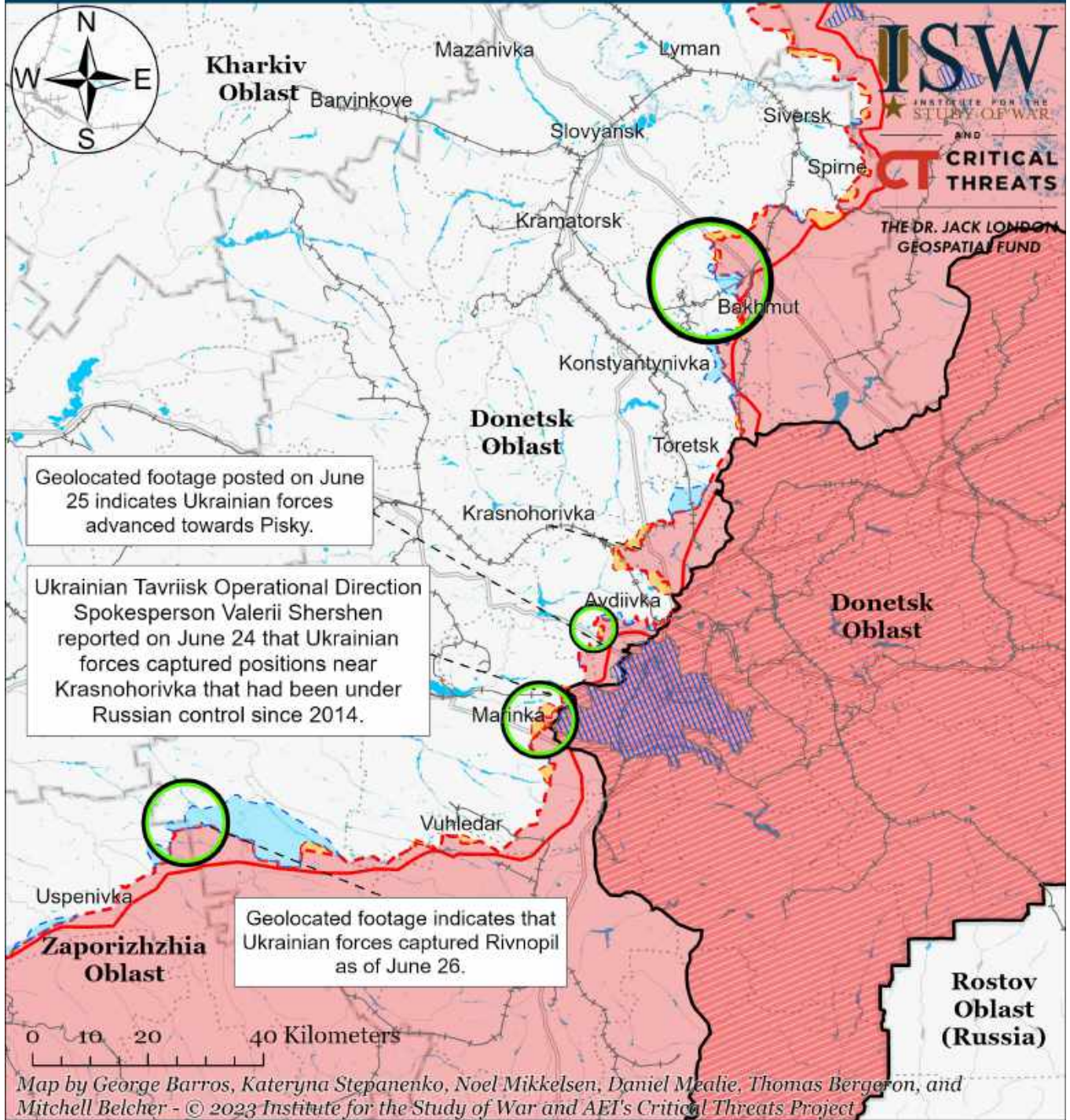
Assessed Control of Terrain Around Luhansk Oblast as of June 27, 2023, 3:00 PM ET



- Significant Fighting in the past 24 Hours
- Assessed Russian Advances in Ukraine*
- Claimed Ukrainian Counteroffensives
- Russian Ground Lines of Communication
- Assessed Russian-controlled Ukrainian Territory
- Reported Ukrainian Partisan Warfare
- Russian-controlled Ukrainian Territory before February 24
- Claimed Russian Control over Ukrainian Territory

* Assessed Russian advances are areas where ISW assesses Russian forces have operated in or launched attacks against but do not control.

Assessed Control of Terrain Around Donetsk as of June 27, 2023, 3:00 PM ET



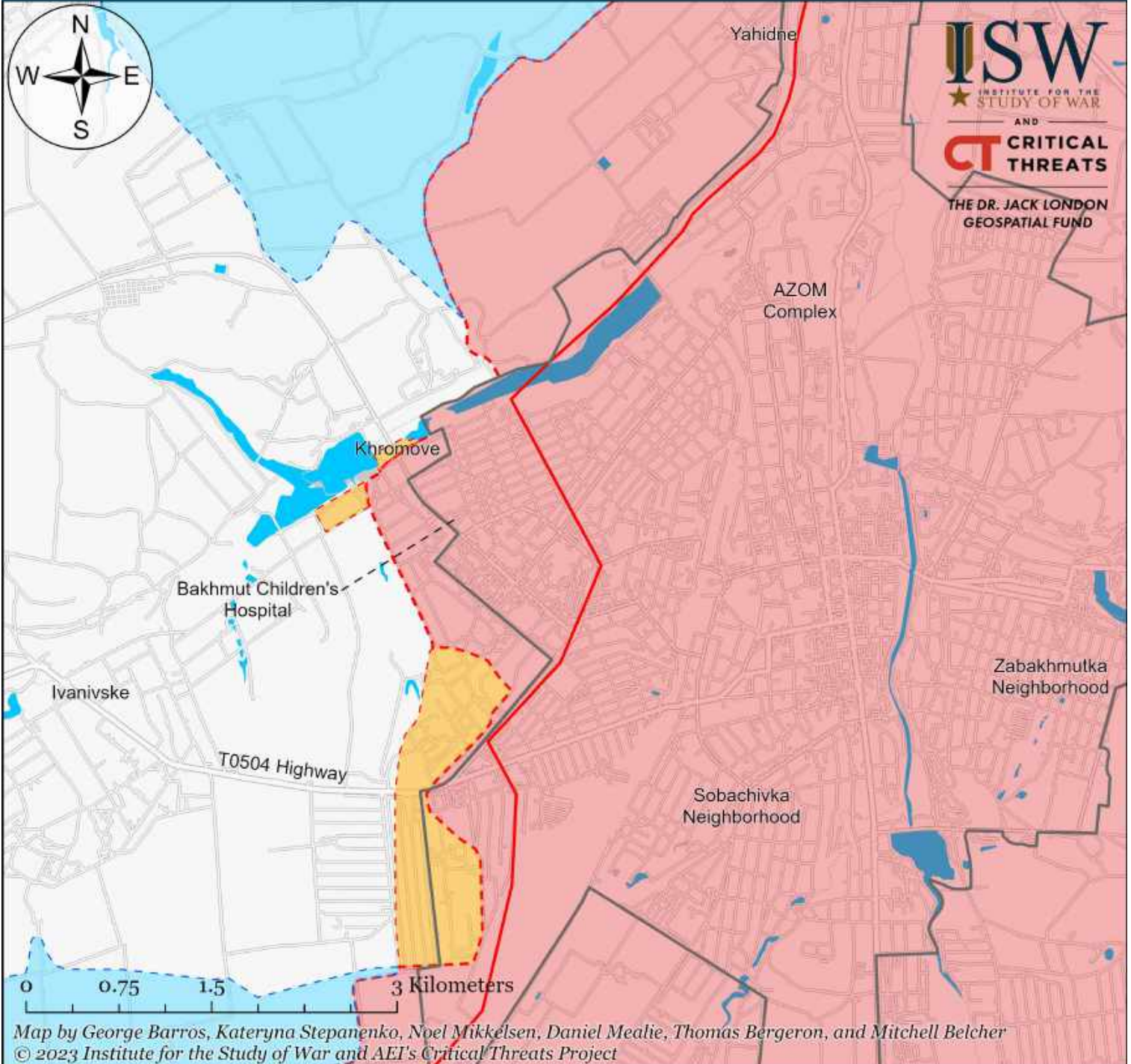
Map by George Barros, Kateryna Stepanenko, Noel Mikkelsen, Daniel Mealie, Thomas Bergeron, and Mitchell Belcher - © 2023 Institute for the Study of War and AET's Critical Threats Project

- Significant Fighting in the past 24 Hours
- Assessed Russian-controlled Ukrainian Territory
- Russian-controlled Ukrainian Territory before February 24
- Assessed Russian Advances in Ukraine*
- Claimed Russian Control over Ukrainian Territory
- Claimed Ukrainian Counteroffensives
- Major Railroads
- Reported Ukrainian Partisan Warfare

* Assessed Russian advances are areas where ISW assesses Russian forces have operated in or launched attacks against but do not control.

Note: Ukrainian Tavriisk Operational Direction Spokesperson Valerii Shershen reported on June 24 that Ukrainian forces captured positions near Krasnohorivka that had been under Russian control since 2014. ISW cannot assess the exact areas of advances at this time due to a lack of sufficient evidence.

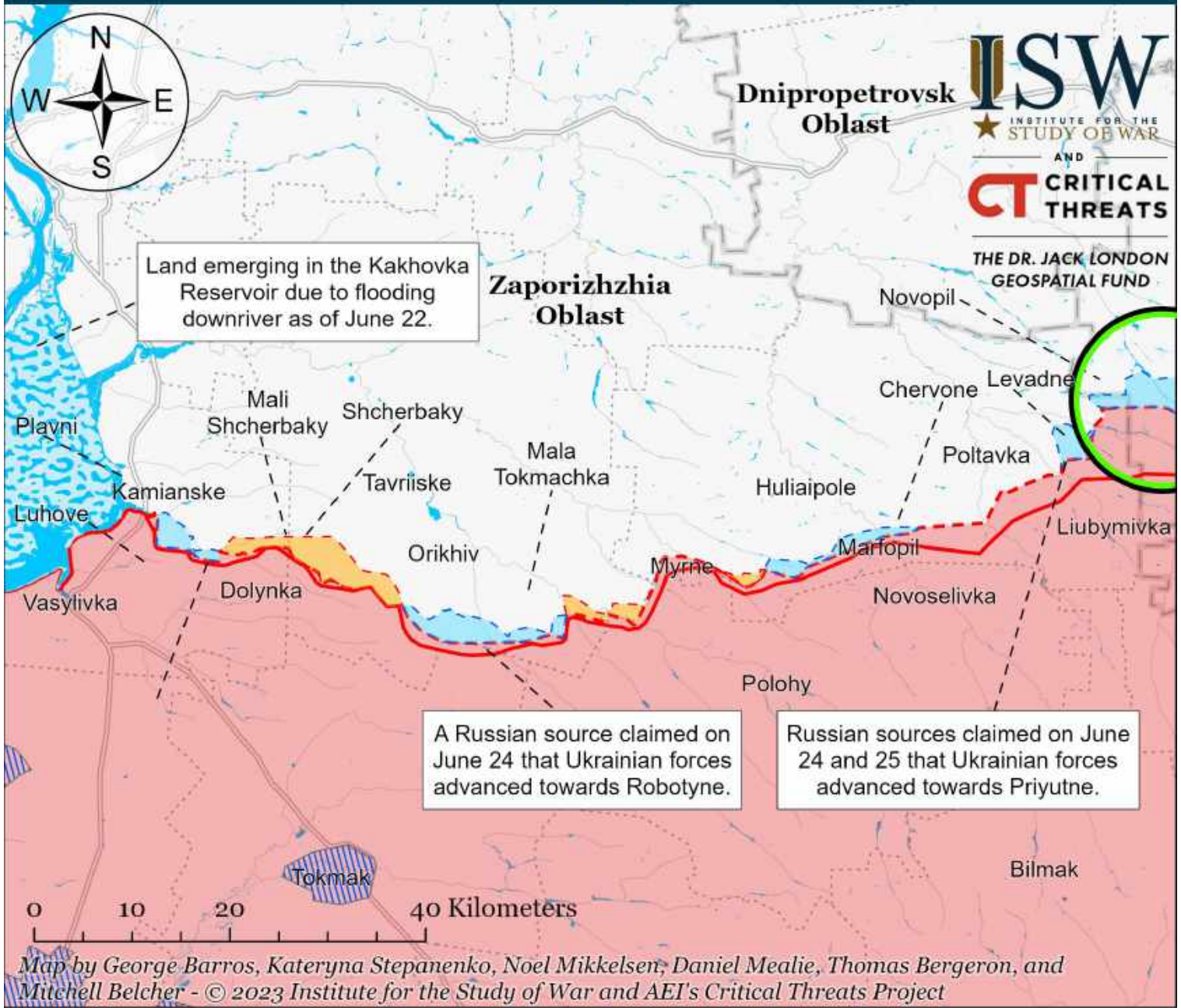
Assessed Control of Terrain in Bakhmut as of June 27, 2023, 3:00 PM ET



- | | | |
|---------------------------------------|--|-------------------------------------|
| Bakhmut City Limits | Assessed Russian-controlled Ukrainian Territory | Claimed Ukrainian Counteroffensives |
| Assessed Russian Advances in Ukraine* | Claimed Russian Control over Ukrainian Territory | Reported Ukrainian Partisan Warfare |

* Assessed Russian advances are areas where ISW assesses Russian forces have operated in or launched attacks against but do not control.

Assessed Control of Terrain Around Zaporizhzhia as of June 27, 2023, 3:00 PM ET

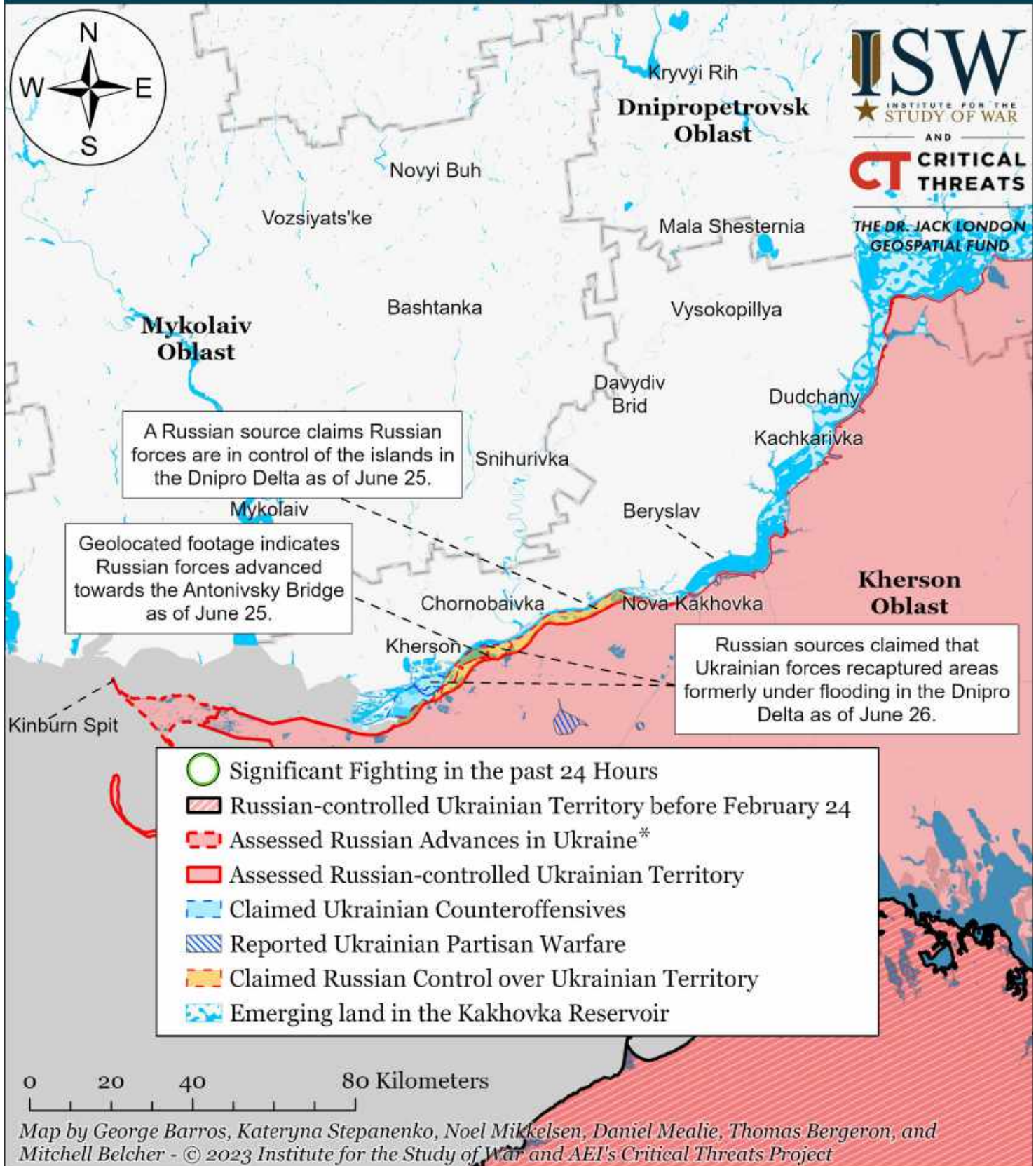


-  Significant Fighting in the past 24 Hours
-  Assessed Russian-controlled Ukrainian Territory
-  Reported Ukrainian Partisan Warfare
-  Russian-controlled Ukrainian Territory before February 24
-  Claimed Russian Control over Ukrainian Territory
-  Emerging land in the Kakhovka Reservoir
-  Assessed Russian Advances in Ukraine*
-  Claimed Ukrainian Counteroffensives

* Assessed Russian advances are areas where ISW assesses Russian forces have operated in or launched attacks against but do not control.

Note: Ukrainian Deputy Defense Minister Hanna Malyar claimed on June 26 that Ukrainian forces recaptured 17 square kilometers in the past week and 130 square kilometers since the start of the counteroffensive.

Assessed Control of Terrain Around Kherson and Mykolaiv as of June 27, 2023, 3:00 PM ET



Map by George Barros, Kateryna Stepanenko, Noel Mikkelsen, Daniel Mealie, Thomas Bergeron, and Mitchell Belcher - © 2023 Institute for the Study of War and AEI's Critical Threats Project

* Assessed Russian advances are areas where ISW assesses Russian forces have operated in or launched attacks against but do not control.

Note: The Ukrainian counteroffensive layer displays areas previously assigned to the Russian control, Russian advances, or Russian claims layers where ISW now assesses that Ukrainian forces have established a presence beyond a short-term raid. Inclusion of an area on this layer does not imply that ISW assesses that the area is part of any upcoming Ukrainian counteroffensive operation.

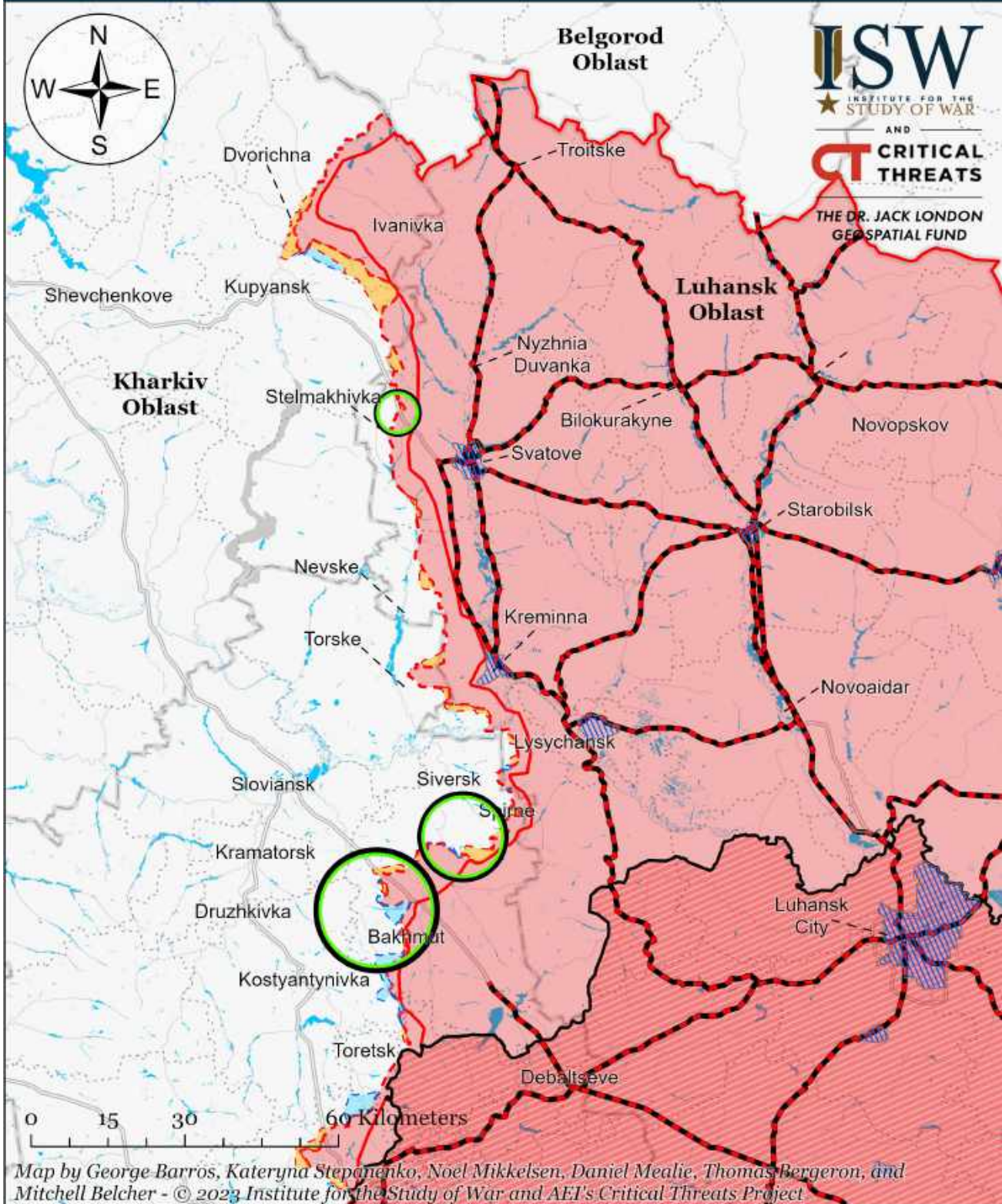
Assessed Control of Terrain in Ukraine and Main Russian Maneuver Axes as of June 26, 2023, 3:00 PM ET



Map by George Barros, Kateryna Stepanenko, Noel Mikkelsen, Daniel Mealie, Thomas Bergeron, and Mitchell Belcher - © 2023 Institute for the Study of War and AEI's Critical Threats Project

* Assessed Russian advances are areas where ISW assesses Russian forces have operated in or launched attacks against but do not control.

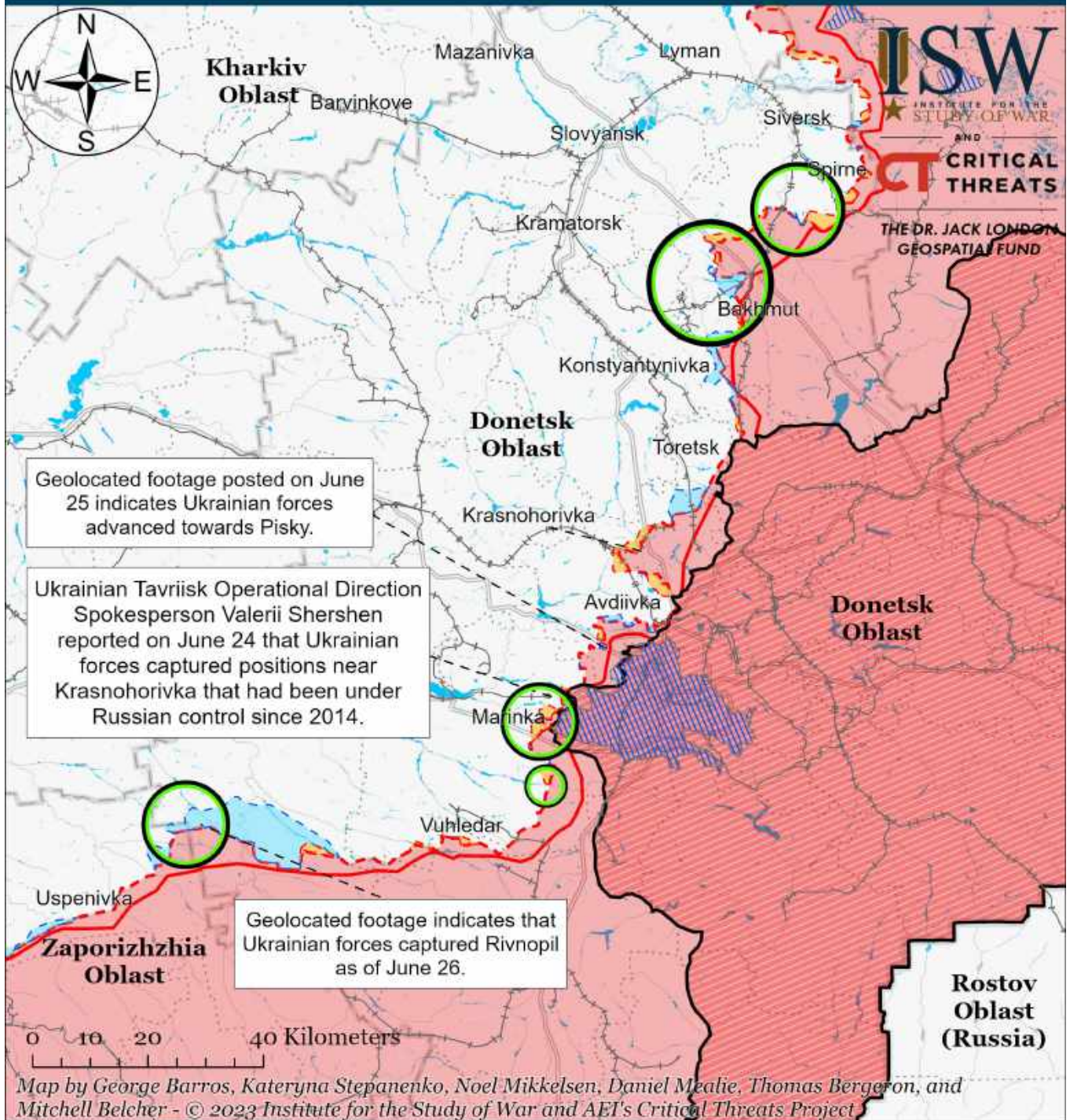
Assessed Control of Terrain Around Luhansk Oblast as of June 26, 2023, 3:00 PM ET



- Significant Fighting in the past 24 Hours
- Assessed Russian Advances in Ukraine*
- Claimed Ukrainian Counteroffensives
- Russian Ground Lines of Communication
- Assessed Russian-controlled Ukrainian Territory
- Reported Ukrainian Partisan Warfare
- Russian-controlled Ukrainian Territory before February 24
- Claimed Russian Control over Ukrainian Territory

* Assessed Russian advances are areas where ISW assesses Russian forces have operated in or launched attacks against but do not control.

Assessed Control of Terrain Around Donetsk as of June 26, 2023, 3:00 PM ET



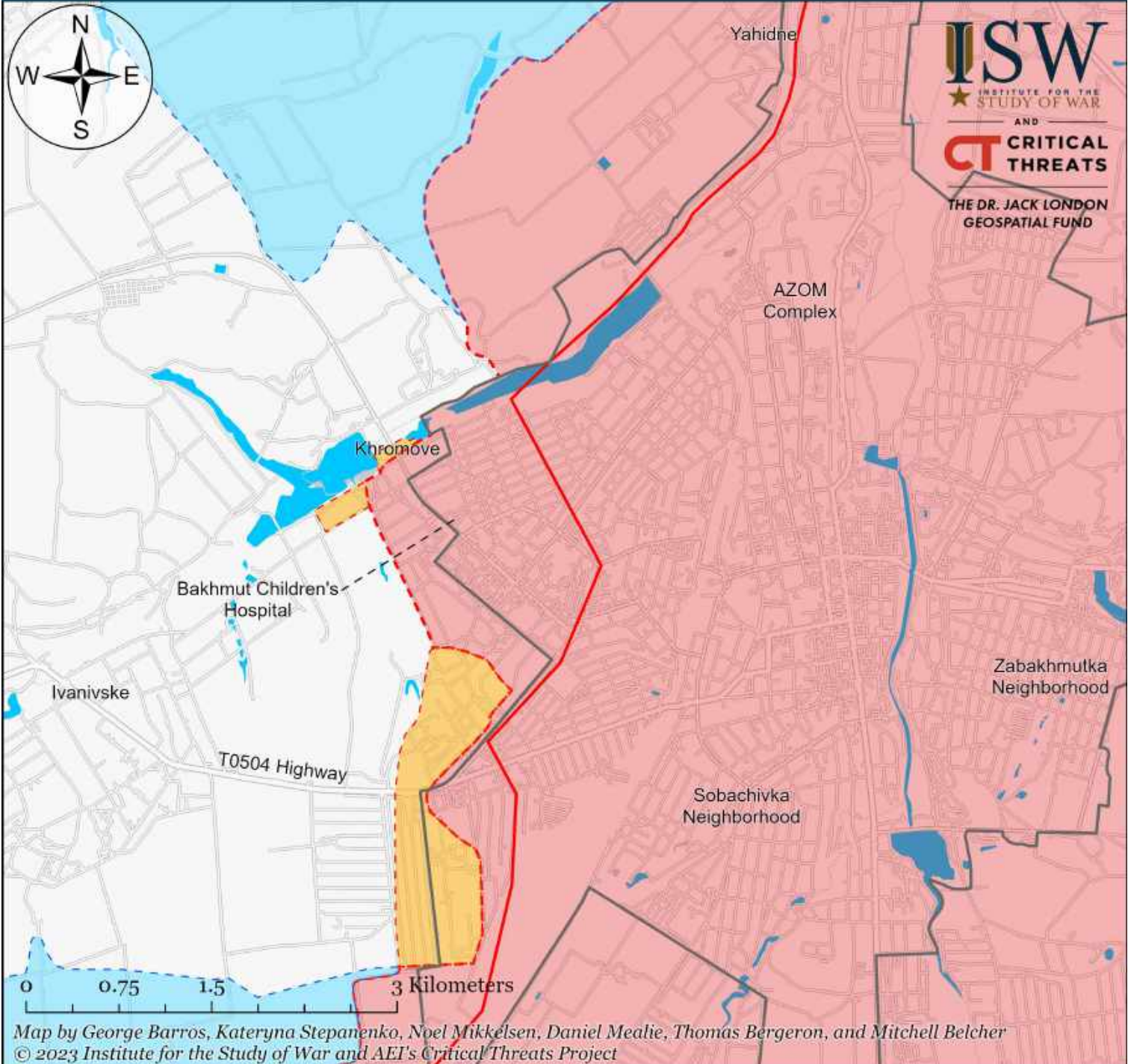
Map by George Barros, Kateryna Stepanenko, Noel Mikkelsen, Daniel Mealie, Thomas Bergeron, and Mitchell Belcher - © 2023 Institute for the Study of War and AET's Critical Threats Project

- Significant Fighting in the past 24 Hours
- Assessed Russian-controlled Ukrainian Territory
- Russian-controlled Ukrainian Territory before February 24
- Assessed Russian Advances in Ukraine*
- Claimed Russian Control over Ukrainian Territory
- Claimed Ukrainian Counteroffensives
- Major Railroads
- Reported Ukrainian Partisan Warfare

* Assessed Russian advances are areas where ISW assesses Russian forces have operated in or launched attacks against but do not control.

Note: Ukrainian Tavriisk Operational Direction Spokesperson Valerii Shershen reported on June 24 that Ukrainian forces captured positions near Krasnohorivka that had been under Russian control since 2014. ISW cannot assess the exact areas of advances at this time due to a lack of sufficient evidence.

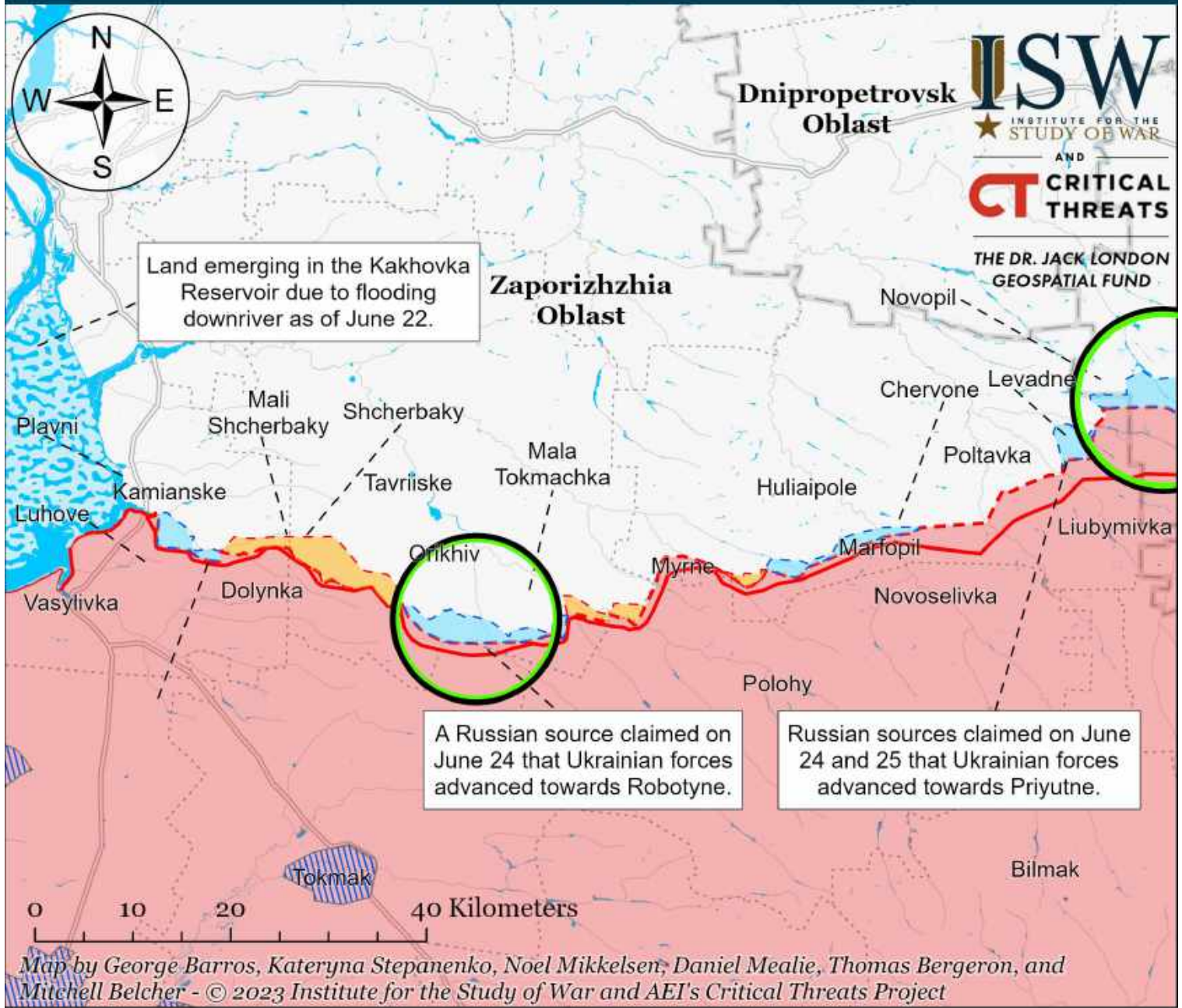
Assessed Control of Terrain in Bakhmut as of June 26, 2023, 3:00 PM ET



- Bakhmut City Limits
- Assessed Russian-controlled Ukrainian Territory
- Assessed Russian Advances in Ukraine*
- Claimed Russian Control over Ukrainian Territory
- Claimed Ukrainian Counteroffensives
- Reported Ukrainian Partisan Warfare

* Assessed Russian advances are areas where ISW assesses Russian forces have operated in or launched attacks against but do not control.

Assessed Control of Terrain Around Zaporizhzhia as of June 26, 2023, 3:00 PM ET

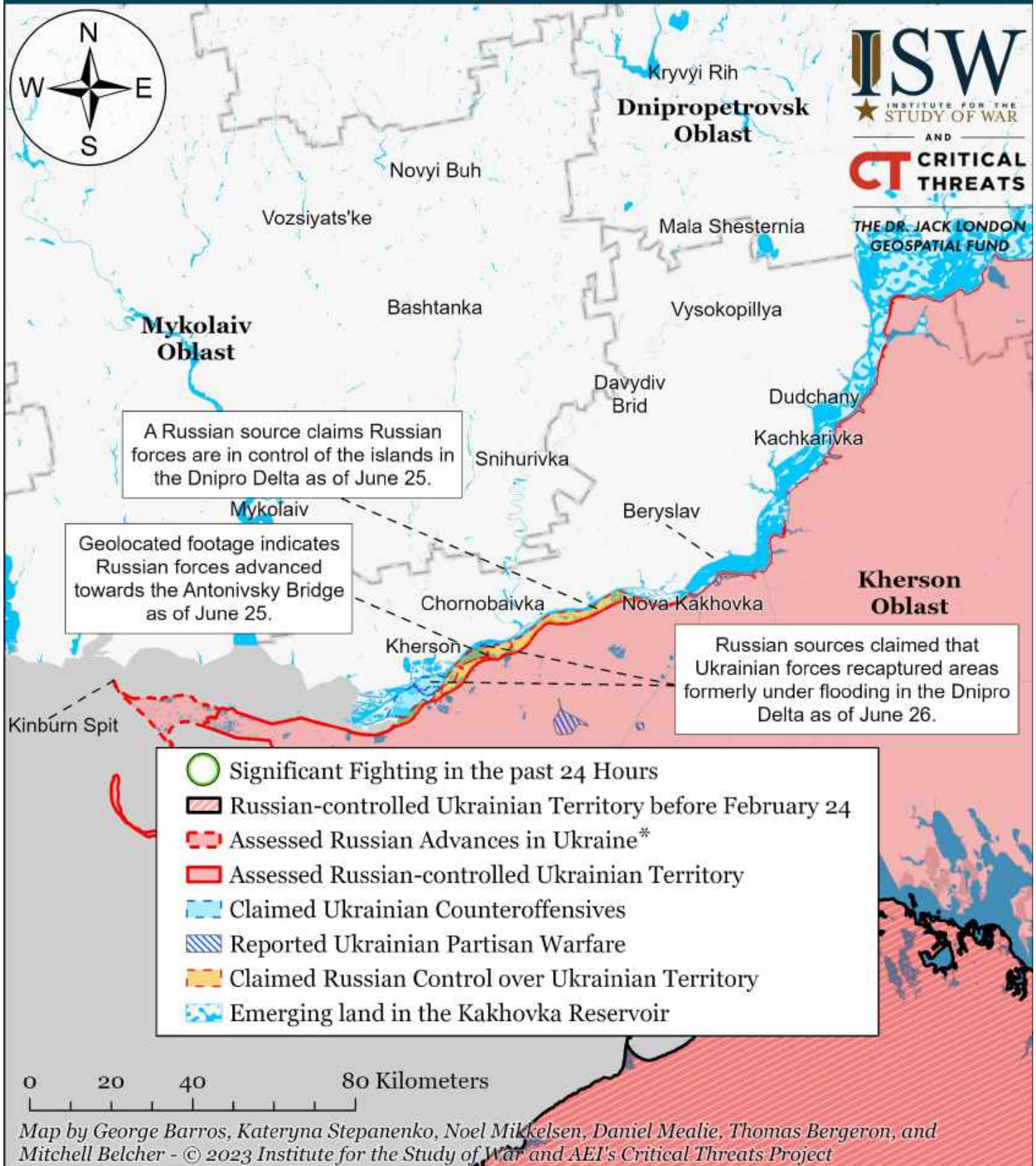


- Significant Fighting in the past 24 Hours
- Assessed Russian-controlled Ukrainian Territory
- Claimed Russian Control over Ukrainian Territory
- Emerging land in the Kakhovka Reservoir
- Assessed Russian Advances in Ukraine*
- Claimed Ukrainian Counteroffensives
- Reported Ukrainian Partisan Warfare

* Assessed Russian advances are areas where ISW assesses Russian forces have operated in or launched attacks against but do not control.

Note: Ukrainian Deputy Defense Minister Hanna Malyar claimed on June 26 that Ukrainian forces recaptured 17 square kilometers in the past week and 130 square kilometers since the start of the counteroffensive.

Assessed Control of Terrain Around Kherson and Mykolaiv as of June 26, 2023, 3:00 PM ET



* Assessed Russian advances are areas where ISW assesses Russian forces have operated in or launched attacks against but do not control.

Note: The Ukrainian counteroffensive layer displays areas previously assigned to the Russian control, Russian advances, or Russian claims layers where ISW now assesses that Ukrainian forces have established a presence beyond a short-term raid. Inclusion of an area on this layer does not imply that ISW assesses that the area is part of any upcoming Ukrainian counteroffensive operation.

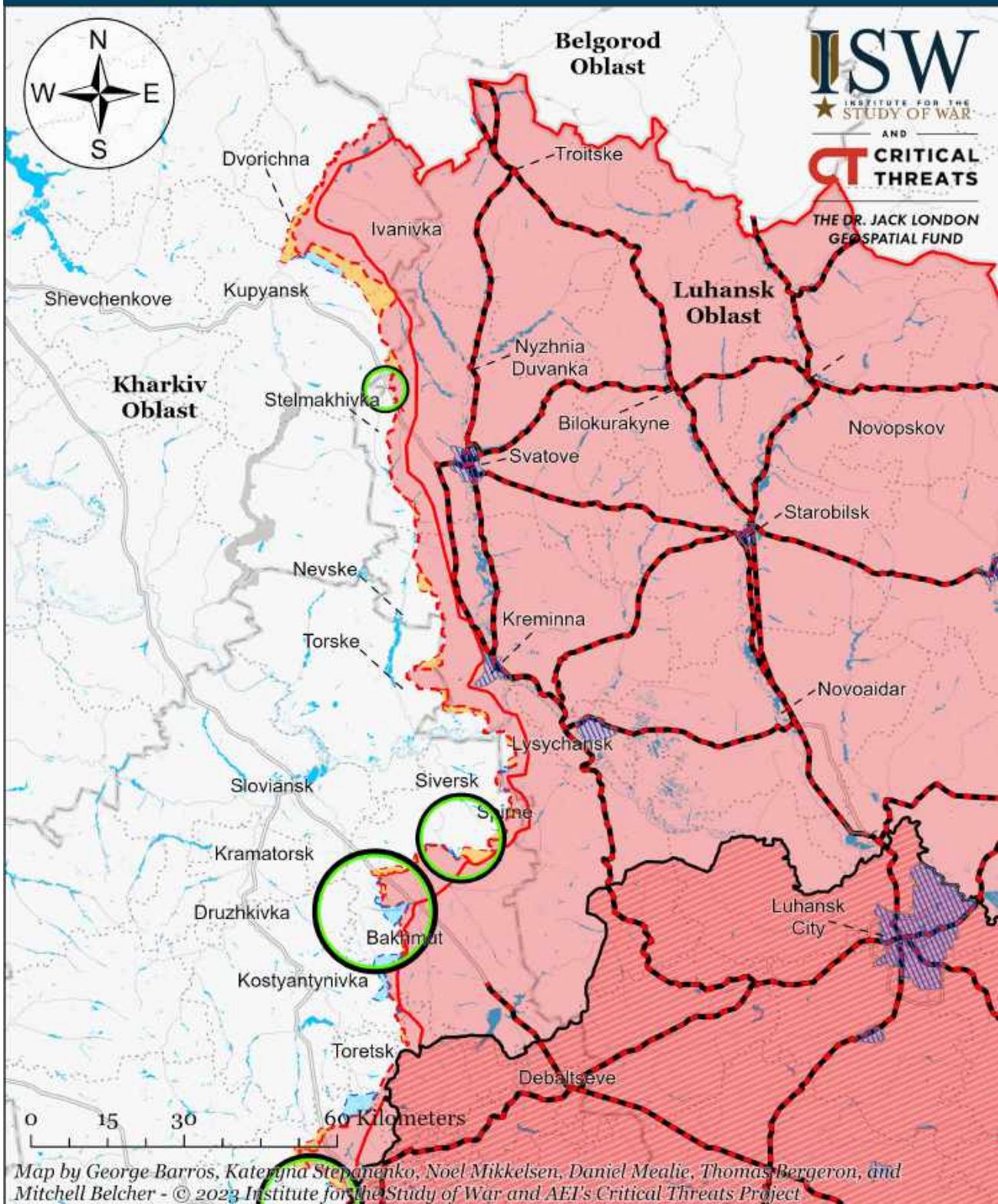
Assessed Control of Terrain in Ukraine and Main Russian Maneuver Axes as of June 25, 2023, 3:00 PM ET



Map by George Barros, Kateryna Stepanenko, Noel Mikkelsen, Daniel Mealie, Thomas Bergeron, and Mitchell Belcher - © 2023 Institute for the Study of War and AEI's Critical Threats Project

* Assessed Russian advances are areas where ISW assesses Russian forces have operated in or launched attacks against but do not control.

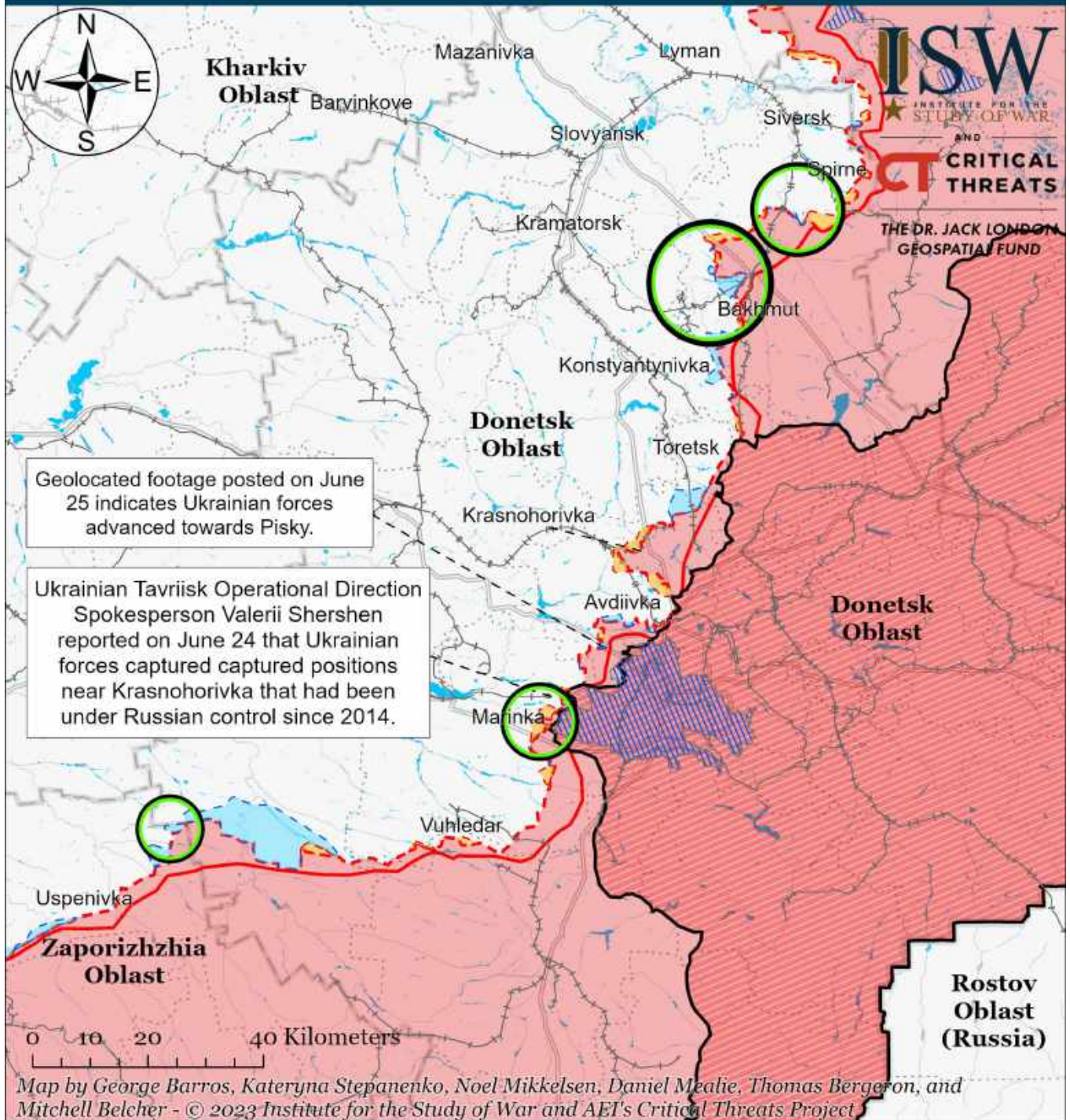
Assessed Control of Terrain Around Luhansk Oblast as of June 25, 2023, 3:00 PM ET



- Significant Fighting in the past 24 Hours
- Assessed Russian Advances in Ukraine*
- Claimed Ukrainian Counteroffensives
- Russian Ground Lines of Communication
- Assessed Russian-controlled Ukrainian Territory
- Reported Ukrainian Partisan Warfare
- Russian-controlled Ukrainian Territory before February 24
- Claimed Russian Control over Ukrainian Territory

* Assessed Russian advances are areas where ISW assesses Russian forces have operated in or launched attacks against but do not control.

Assessed Control of Terrain Around Donetsk as of June 25, 2023, 3:00 PM ET



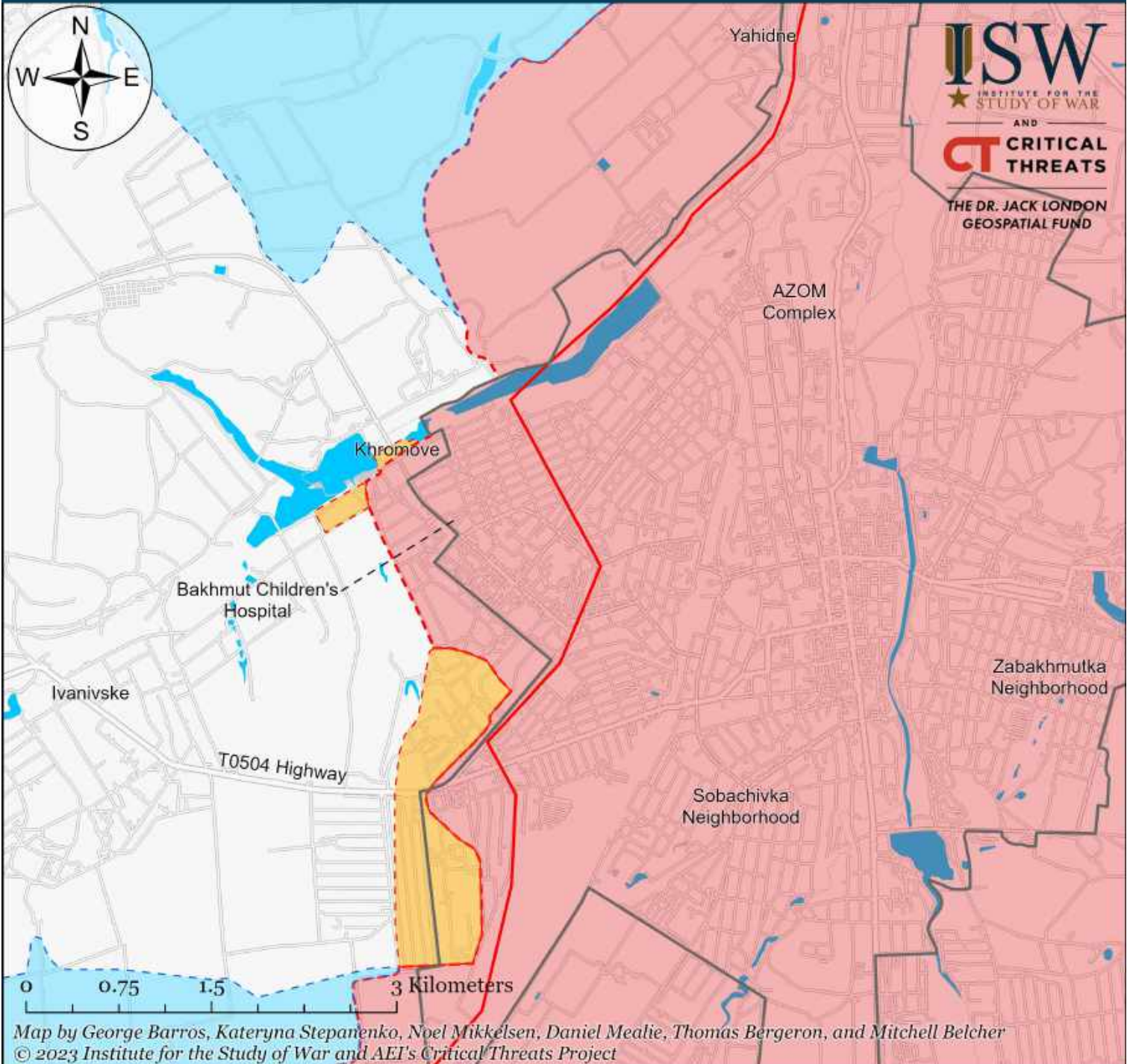
Map by George Barros, Kateryna Stepanenko, Noel Mikkelsen, Daniel Mealie, Thomas Bergeron, and Mitchell Belcher - © 2023 Institute for the Study of War and AET's Critical Threats Project

- Significant Fighting in the past 24 Hours
- Assessed Russian-controlled Ukrainian Territory
- Russian-controlled Ukrainian Territory before February 24
- Assessed Russian Advances in Ukraine*
- Claimed Russian Control over Ukrainian Territory
- Claimed Ukrainian Counteroffensives
- + Major Railroads
- Reported Ukrainian Partisan Warfare

* Assessed Russian advances are areas where ISW assesses Russian forces have operated in or launched attacks against but do not control.

Note: Ukrainian Tavriisk Operational Direction Spokesperson Valerii Shershen reported on June 24 that Ukrainian forces captured positions near Krasnohorivka that had been under Russian control since 2014. ISW cannot assess the exact areas of advances at this time due to a lack of sufficient evidence.

Assessed Control of Terrain in Bakhmut as of June 25, 2023, 3:00 PM ET



- | | | |
|---------------------------------------|--|-------------------------------------|
| Bakhmut City Limits | Assessed Russian-controlled Ukrainian Territory | Claimed Ukrainian Counteroffensives |
| Assessed Russian Advances in Ukraine* | Claimed Russian Control over Ukrainian Territory | Reported Ukrainian Partisan Warfare |

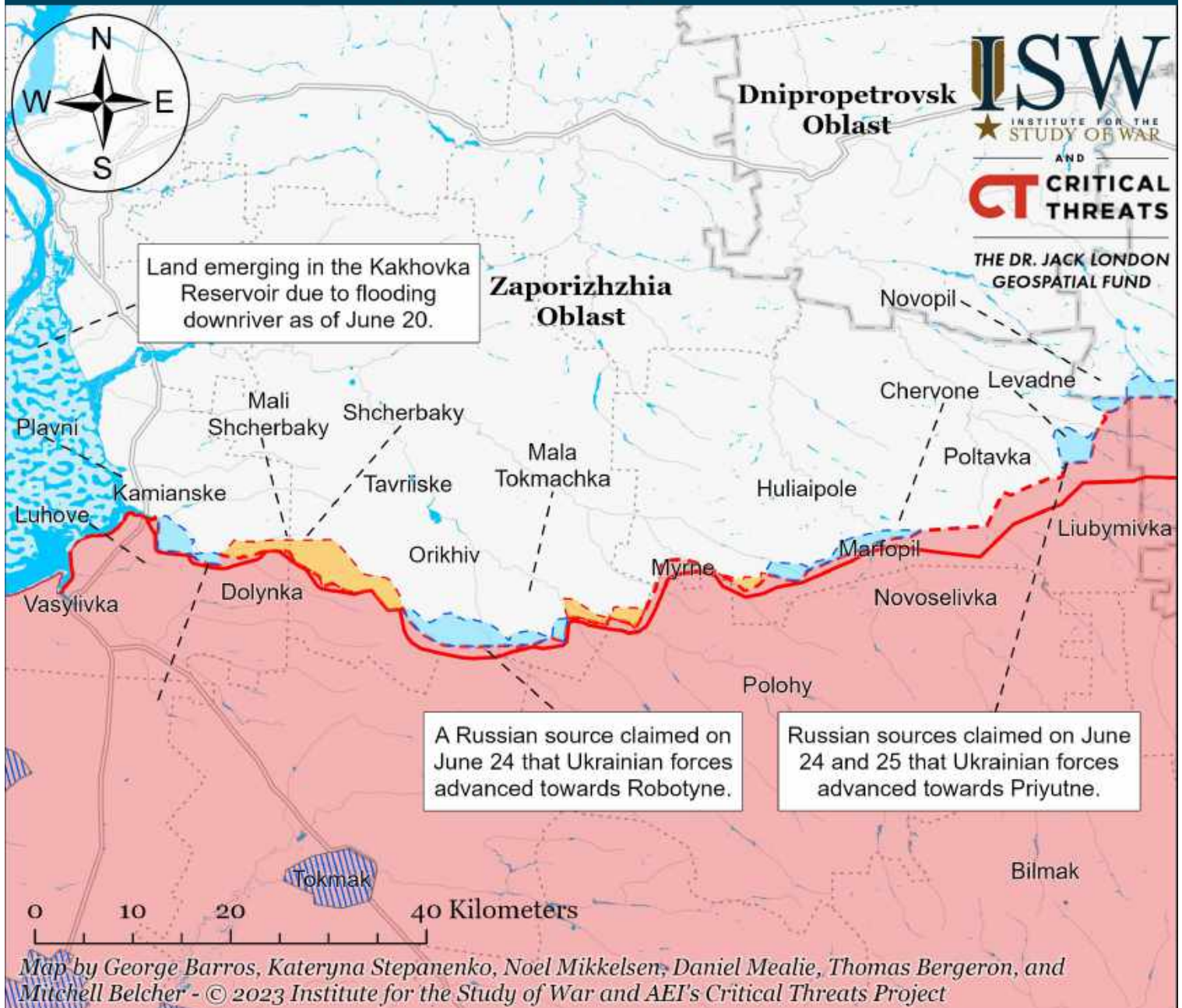
* Assessed Russian advances are areas where ISW assesses Russian forces have operated in or launched attacks against but do not control.

Assessed Control of Terrain Around Kherson and Mykolaiv as of June 25, 2023, 3:00 PM ET



* Assessed Russian advances are areas where ISW assesses Russian forces have operated in or launched attacks against but do not control.

Assessed Control of Terrain Around Zaporizhzhia as of June 25, 2023, 3:00 PM ET



- Significant Fighting in the past 24 Hours
- Assessed Russian-controlled Ukrainian Territory
- Reported Ukrainian Partisan Warfare
- Russian-controlled Ukrainian Territory before February 24
- Claimed Russian Control over Ukrainian Territory
- Emerging land in the Kakhovka Reservoir
- Assessed Russian Advances in Ukraine*
- Claimed Ukrainian Counteroffensives

* Assessed Russian advances are areas where ISW assesses Russian forces have operated in or launched attacks against but do not control.

Note: A Russian source reported on June 24 that Ukrainian forces advanced 1.5 kilometers north of Robotyne over the last 24 hours.